

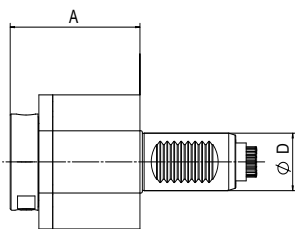
Sauter Revolver VDI 30 / DIN 5480



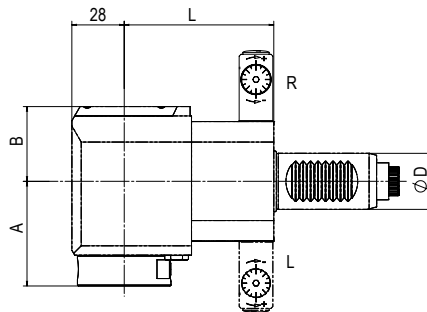
Colchester Tornado TT 6
Doosan Z 290 M / SM
Emco Turn 365
Emco Turn 365-42
Emco Hyperturn 645 MC Plus
Emco Hyperturn 665 MC Plus
Gildemeister CTX 210
Gildemeister CTX 310
Gildemeister CTX 320 linear

Gildemeister CTX 400 E
Gildemeister CTX 400 Twin
Gildemeister CTX 410
Gildemeister CTX 420
Gildemeister CTX alpha 300
Gildemeister CTX alpha 500
Gildemeister MF Twin 42
Gildemeister MF Twin 65
Gildemeister Sprint 32 linear

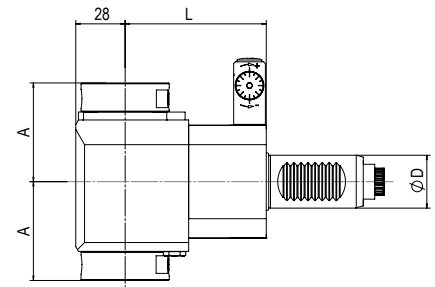
Gildemeister Sprint 65 linear
Gildemeister Twin 42 (Rahmengröße 2)
Gildemeister Twin 65 (Rahmengröße 2)
Gildemeister Twin 102 mit B-Achse
Graziano CTX 310
Graziano CTX 320
HURCO TMM 8
Weiler DZ 67



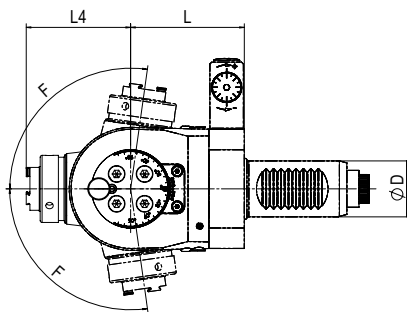
1



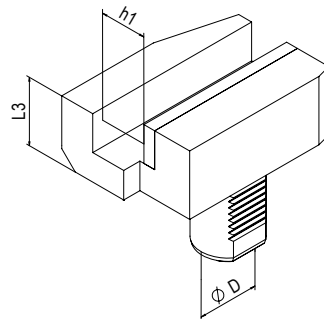
2



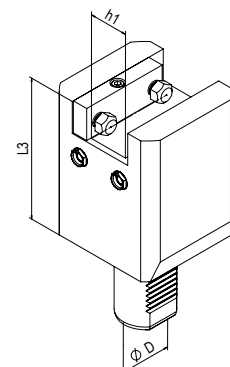
3



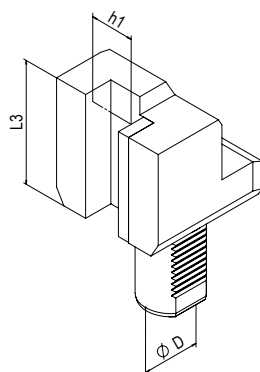
4



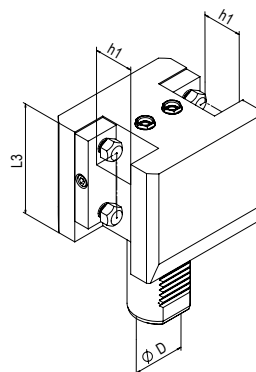
5



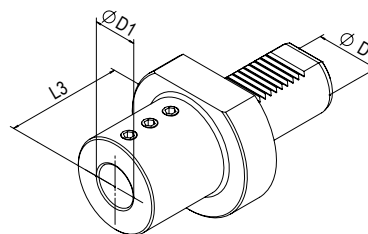
6



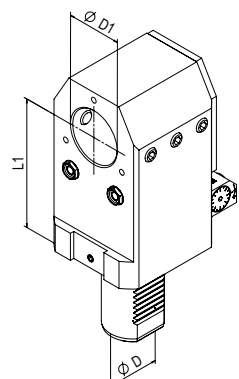
7



8



9



10

Sauter Revolver VDI 30 / DIN 5480



Angetriebene Werkzeuge | Live Tools

BENZ Solidfix® Modulares Schnellwechselsystem | Modular Quick Change System

| Bestell-Nr. Order No. | Ausführung Tool style | Bild Figure | Aufnahme Tool holder | n [min ⁻¹] | Übersetzung Gear ratio | T [Nm] | EK EC | IK IC | pmax [bar] | Maße Dimensions | | | |
|--------------------------|----------------------------------|----------------|-------------------------|---------------------------|---------------------------|-----------|----------|----------|---------------|-------------------|----|----|-----|
| | | | | | | | | | | D | A | B | L |
| 113DA01200S3 | axial | 1 | | 8.000 | 1:1 | 25 | ✓ | - | - | 30 | 58 | - | - |
| 113EA01231S3 | axial | 1 | | 8.000 | 1:1 | 25 | ✓ | ✓ | 50 | 30 | 79 | - | - |
| 113FAX01239S3R | radial | 2 | | 8.000 | 1:1 | 30 | ✓ | - | - | 30 | 56 | 40 | 55 |
| 113FAX01239S3L | radial | 2 | | 8.000 | 1:1 | 30 | ✓ | - | - | 30 | 56 | 40 | 55 |
| 113GAX01239S3R | radial | 2 | | 8.000 | 1:1 | 30 | ✓ | ✓ | 100 | 30 | 56 | 58 | 55 |
| 113GAX01239S3L | radial | 2 | | 8.000 | 1:1 | 30 | ✓ | ✓ | 100 | 30 | 56 | 58 | 55 |
| 113FAX01239S3R-80 | radial | 2 | | 8.000 | 1:1 | 30 | ✓ | - | - | 30 | 56 | 40 | 80 |
| 113FAX01239S3L-80 | radial | 2 | | 8.000 | 1:1 | 30 | ✓ | - | - | 30 | 56 | 40 | 80 |
| 113GAX01239S3R-80 | radial | 2 | | 8.000 | 1:1 | 30 | ✓ | ✓ | 100 | 30 | 56 | 58 | 80 |
| 113GAX01239S3L-80 | radial | 2 | | 8.000 | 1:1 | 30 | ✓ | ✓ | 100 | 30 | 56 | 58 | 80 |
| 113FAX01239S3D-80 | Doppel- verzahnung | 2 | BENZ Solidfix® S3 | 8.000 | 1:1 | 30 | ✓ | - | - | 30 | 56 | 40 | 80 |
| 113GAX01239S3D-80 | Double spline | 2 | | 8.000 | 1:1 | 30 | ✓ | ✓ | 100 | 30 | 56 | 58 | 80 |
| 113FAX01239S32-80 | Doppelspindler Double spindle | 3 | | 8.000 | 1:1 | 30 | ✓ | - | - | 30 | 56 | - | 80 |
| 113FAX01239S3R-100 | radial | 2 | | 8.000 | 1:1 | 30 | ✓ | - | - | 30 | 56 | 40 | 100 |
| 113FAX01239S3L-100 | radial | 2 | | 8.000 | 1:1 | 30 | ✓ | - | - | 30 | 56 | 40 | 100 |
| 113GAX01239S3R-100 | radial | 2 | | 8.000 | 1:1 | 30 | ✓ | ✓ | 100 | 30 | 56 | 58 | 100 |
| 113GAX01239S3L-100 | radial | 2 | | 8.000 | 1:1 | 30 | ✓ | ✓ | 100 | 30 | 56 | 58 | 100 |
| 113FAX01239S3D-100 | Doppelverzahnung | 2 | | 8.000 | 1:1 | 30 | ✓ | - | - | 30 | 56 | 40 | 100 |
| 113GAX01239S3D-100 | Double spline | 2 | | 8.000 | 1:1 | 30 | ✓ | ✓ | 100 | 30 | 56 | 58 | 100 |
| 113FAX01239S32-100 | Doppelspindler Double spindle | 3 | | 8.000 | 1:1 | 30 | ✓ | - | - | 30 | 56 | - | 100 |

EK: externe Kühlung, IK: interne Kühlung
 R: rechte Ausführung, L: linke Ausführung
 Maß A: max. Länge inkl. Spannfutter
 Zubehör (ab S. 103) ist nicht im Lieferumfang enthalten.
 Technische Änderungen vorbehalten.

EC: external coolant, IC: internal coolant
 R: right hand design, L: left hand design
 Dimension A: max. length incl. clamping nut
 Accessories (from p. 103) are not included in delivery.
 We reserve the right to modify technical contents.

Sauter
 Revolver
 VDI 30

Sauter Revolver VDI 30 / DIN 5480



Angetriebene Werkzeuge | Live Tools

Spannzange | Collet Chuck

| Bestell-Nr. Order No. | Ausführung Tool style | Bild Figure | Aufnahme Tool holder | n [min ⁻¹] | Übersetzung Gear ratio | T [Nm] | EK EC | IK IC | pmax [bar] | Maße Dimensions | | | | |
|--------------------------|----------------------------------|----------------|-------------------------|---------------------------|---------------------------|-----------|----------|----------|---------------|-------------------|------|----|-----|----------------|
| | | | | | | | | | | D | A* | B | L | L ₄ |
| 113DA01200E5A | axial | 1 | ER25 | 8.000 | 1:1 | 25 | ✓ | - | - | 30 | 53,9 | - | - | - |
| 113EA01231E5A | axial | 1 | ER25 | 8.000 | 1:1 | 25 | ✓ | ✓ | 50 | 30 | 79,9 | - | - | - |
| 113FAX01239E5AR | radial | 2 | ER25 | 8.000 | 1:1 | 30 | ✓ | - | - | 30 | 56,9 | 40 | 55 | - |
| 113FAX01239E5AL | radial | 2 | ER25 | 8.000 | 1:1 | 30 | ✓ | - | - | 30 | 56,9 | 40 | 55 | - |
| 113GAX01239E5AR | radial | 2 | ER25 | 8.000 | 1:1 | 30 | ✓ | ✓ | 100 | 30 | 61,9 | 58 | 55 | - |
| 113GAX01239E5AL | radial | 2 | ER25 | 8.000 | 1:1 | 30 | ✓ | ✓ | 100 | 30 | 61,9 | 58 | 55 | - |
| 113FAX01239E5AR-80 | radial | 2 | ER25 | 8.000 | 1:1 | 30 | ✓ | - | - | 30 | 56,9 | 40 | 80 | - |
| 113FAX01239E5AL-80 | radial | 2 | ER25 | 8.000 | 1:1 | 30 | ✓ | - | - | 30 | 56,9 | 40 | 80 | - |
| 113GAX01239E5AR-80 | radial | 2 | ER25 | 8.000 | 1:1 | 30 | ✓ | ✓ | 100 | 30 | 61,9 | 58 | 80 | - |
| 113GAX01239E5AL-80 | radial | 2 | ER25 | 8.000 | 1:1 | 30 | ✓ | ✓ | 100 | 30 | 61,9 | 58 | 80 | - |
| 113FAX01239E5AD-80 | Doppel- verzahnung | 2 | ER25 | 8.000 | 1:1 | 30 | ✓ | - | - | 30 | 56,9 | 40 | 80 | - |
| 113GAX01239E5AD-80 | Double spline | 2 | ER25 | 8.000 | 1:1 | 30 | ✓ | ✓ | 100 | 30 | 61,9 | 58 | 80 | - |
| 113FAX01239E5A2-80 | Doppelspindler Double spindle | 3 | ER25 | 8.000 | 1:1 | 30 | ✓ | - | - | 30 | 56,9 | - | 80 | - |
| 113FAX01239E5AR-100 | radial | 2 | ER25 | 8.000 | 1:1 | 30 | ✓ | - | - | 30 | 56,9 | 40 | 100 | - |
| 113FAX01239E5AL-100 | radial | 2 | ER25 | 8.000 | 1:1 | 30 | ✓ | - | - | 30 | 56,9 | 40 | 100 | - |
| 113GAX01239E5AR-100 | radial | 2 | ER25 | 8.000 | 1:1 | 30 | ✓ | ✓ | 100 | 30 | 61,9 | 58 | 100 | - |
| 113GAX01239E5AL-100 | radial | 2 | ER25 | 8.000 | 1:1 | 30 | ✓ | ✓ | 100 | 30 | 61,9 | 58 | 100 | - |
| 113FAX01239E5AD-100 | Doppel- verzahnung | 2 | ER25 | 8.000 | 1:1 | 30 | ✓ | - | - | 30 | 56,9 | 40 | 100 | - |
| 113GAX01239E5AD-100 | Double spline | 2 | ER25 | 8.000 | 1:1 | 30 | ✓ | ✓ | 100 | 30 | 61,9 | 58 | 100 | - |
| 113FAX01239E5A2-100 | Doppelspindler Double spindle | 3 | ER25 | 8.000 | 1:1 | 30 | ✓ | - | - | 30 | 56,9 | - | 100 | - |
| 113FDX01239E3A | schwenkbar swiveling | 4 | ER16 | 8.000 | 1:0,88 | 12 | ✓ | - | - | 30 | - | - | 61 | 51,1 |
| 113GDX01239E3A | F= ±98° | 4 | ER16 | 8.000 | 1:0,88 | 12 | ✓ | ✓ | 50 | 30 | - | - | 61 | 56 |

EK: externe Kühlung, IK: interne Kühlung
R: rechte Ausführung, L: linke Ausführung
Maß A*: max. Länge inkl. Spannmutter
Zubehör (ab S. 103) ist nicht im Lieferumfang enthalten.
Technische Änderungen vorbehalten.

EC: external coolant, IC: internal coolant
R: right hand design, L: left hand design
Dimension A*: max. length incl. clamping nut
Accessories (from p. 103) are not included in delivery.
We reserve the right to modify technical contents.

Sauter Revolver VDI 30 / DIN 5480



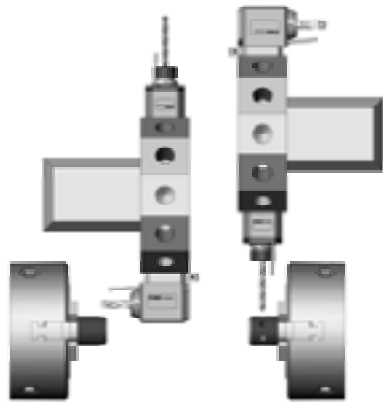
Statische Halter | Static tool holder

| Bestell-Nr. Order No. | Ausführung Tool style | Bild Figure | Maße Dimensions | | | |
|--------------------------|-----------------------------------------------------------------------------------------------------------------------------------------|----------------|-------------------|----------------|----------------|----------------|
| | | | D ₁ | h ₁ | L ₁ | L ₃ |
| 113.5552022 | Vierkant-Queraufnahme rechts Square locking drive radial right | 5 | - | 20x20 | - | 40 |
| 113.5562022 | Vierkant-Queraufnahme links Square locking drive radial left | 5 | - | 20x20 | - | 40 |
| 113.5592080 | Vierkant-Queraufnahme Square locking drive radial Haupt-, Gegenspindel, Überkopf Main-, opposed spindle, overhead | 6 | - | 20x20 | - | 80 |
| 113.55920110 | Vierkant-Queraufnahme Square locking drive radial Haupt-, Gegenspindel, Überkopf Main-, opposed spindle, overhead | 6 | - | 20x20 | - | 110 |
| 113.5612070 | Vierkant-Längsaufnahme links Turning Tool holder axial left | 7 | - | 20x20 | - | 70 |
| 113.5622070 | Vierkant-Längsaufnahme links Turning Tool holder axial left | 7 | - | 20x20 | - | 70 |
| 113.5672080 | Vierkant-Längsaufnahme doppelt Turning Tool holder axial double Haupt-, Gegenspindel, Überkopf Main-, opposed spindle, overhead | 8 | - | 20x20 | - | 80 |
| 113.5712560 | Bohrstangenhalter Boring bar holder | 9 | Ø25 | - | - | 60 |
| 113A012578001 | Bohrstangenhalter Boring bar holder Haupt-, Gegenspindel mit IK Main-, opposed spindle with IC | 10 | Ø25 | - | 80 | - |
| 113A012578002 | Bohrstangenhalter Boring bar holder Haupt-, Gegenspindel mit IK Main-, opposed spindle with IC | 10 | Ø25 | - | 100 | - |

Weitere Ausführungen ab S. 92 | Additional models from p. 92

Beispiele | Examples

Horizontaldrehmaschine mit Sternrevolver
Horizontal lathe with star turret

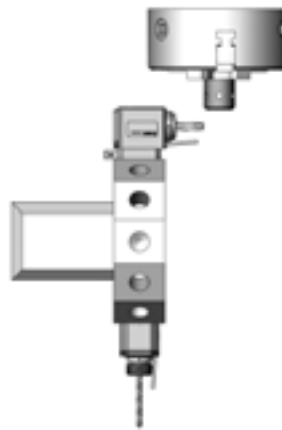


Hauptspindel | Main spindle

Gegenspindel | opposed spindle

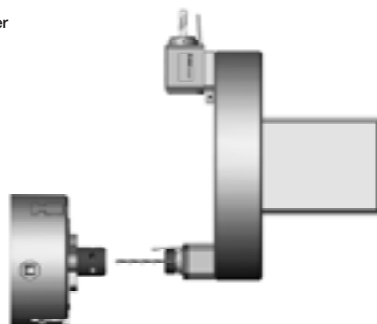
Radialwerkzeug: L=80mm, linke Ausführung, EK, BENZ Solidfix® S3
Radial live tool: L=80mm, left version, EC, BENZ Solidfix® S3
> 113FAX01239S3L-80

Vertikaldrehmaschine mit Sternrevolver
vertical lathe with star turret



Radialwerkzeug: L=55mm, rechte Ausführung, IK, BENZ Solidfix® S3
Radial live tool: L=55mm, right version, IC, BENZ Solidfix® S3
> 113GAX01239S3R

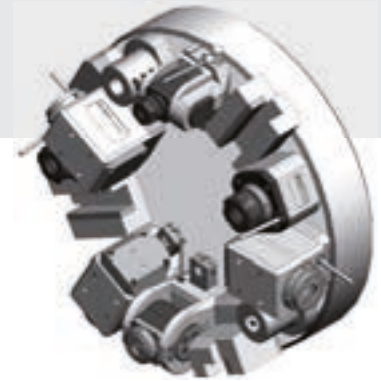
Horizontaldrehmaschine mit Scheibenrevolver
Horizontal lathe with disc turret



Radialwerkzeug: L=55mm, linke Ausführung, EK, BENZ Solidfix® S3
Radial live tool: L=55mm, left version, EC, BENZ Solidfix® S3
> 113FAX01239S3L

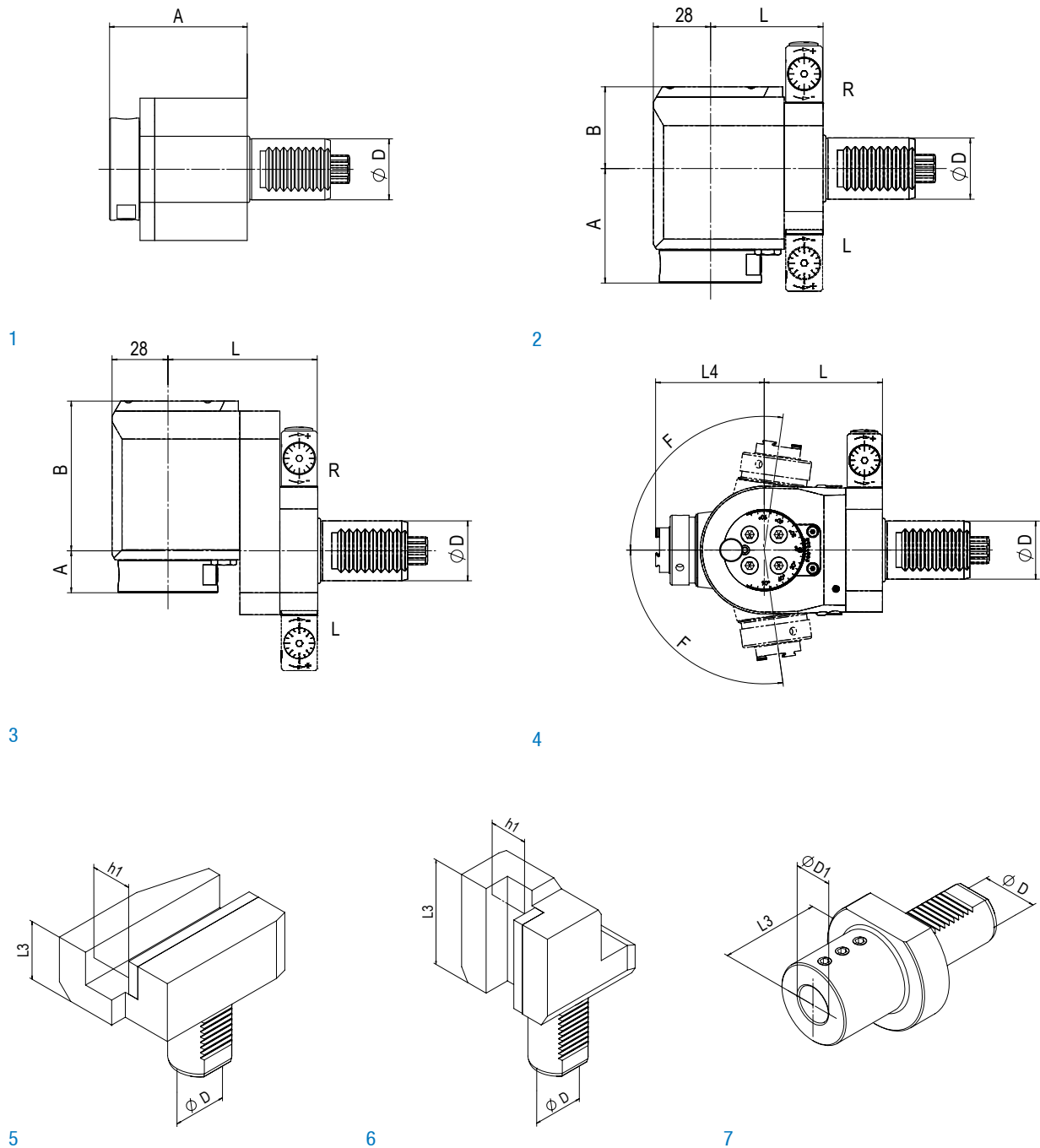
Sauter
Revolver
VDI 30

Sauter Revolver VDI 30 / DIN 5482



Colchester Tornado T6 M
 Colchester Tornado T120 M
 Emco Turn 360
 Emco Turn 365
 Gildemeister CTX 300
 Gildemeister CTX 310 eco

Gildemeister CTX 400
 Gildemeister CTX 400 E
 Gildemeister CTX 400 Serie 2
 Gildemeister NEF 520
 Monforts RNC3



Sauter Revolver VDI 30 / DIN 5482



Angetriebene Werkzeuge | Live Tools

BENZ Solidfix® Modulares Schnellwechselsystem | Modular Quick Change System

| Bestell-Nr. Order No. | Ausführung Tool style | Bild Figure | Aufnahme Tool holder | n [min ⁻¹] | Übersetzung Gear ratio | T [Nm] | EK EC | IK IC | pmax [bar] | Maße Dimensions | | | | |
|--------------------------|-----------------------------------|----------------|-------------------------|---------------------------|---------------------------|-----------|----------|----------|---------------|-------------------|----|----|----|----------------|
| | | | | | | | | | | D | A | B | L | L ₄ |
| 113DA00500S3 | axial | 1 | BENZ Solidfix® S3 | 8.000 | 1:1 | 25 | ✓ | - | - | 30 | 58 | - | - | - |
| 113EA00531S3 | axial | 1 | | 8.000 | 1:1 | 25 | ✓ | ✓ | 50 | 30 | 79 | - | - | - |
| 113FAX00539S3R | radial | 2 | | 8.000 | 1:1 | 30 | ✓ | - | - | 30 | 56 | 40 | 55 | - |
| 113FAX00539S3L | radial | 2 | | 8.000 | 1:1 | 30 | ✓ | - | - | 30 | 56 | 40 | 55 | - |
| 113GAX00539S3R | radial | 2 | | 8.000 | 1:1 | 30 | ✓ | ✓ | 100 | 30 | 56 | 58 | 55 | - |
| 113GAX00539S3L | radial | 2 | | 8.000 | 1:1 | 30 | ✓ | ✓ | | 30 | 56 | 58 | 55 | - |
| 113FBX00539S3R | radial zurückgesetzt offset | 3 | | 8.000 | 1:1 | 30 | ✓ | - | - | 30 | 21 | 75 | 75 | - |
| 113FBX00539S3L | | 3 | | 8.000 | 1:1 | 30 | ✓ | - | - | 30 | 21 | 75 | 75 | - |
| 113GBX00539S3R | | 3 | | 8.000 | 1:1 | 30 | ✓ | ✓ | 100 | 30 | 21 | 93 | 75 | - |
| 113GBX00539S3L | | 3 | | 8.000 | 1:1 | 30 | ✓ | ✓ | | 30 | 21 | 93 | 75 | - |

Maß A: bis Plananlage, ohne Adapter | Dimension A: up to plane surface, without adapter

Spannzange | Collet Chuck

| Bestell-Nr. Order No. | Ausführung Tool style | Bild Figure | Aufnahme Tool holder | n [min ⁻¹] | Übersetzung Gear ratio | T [Nm] | EK EC | IK IC | pmax [bar] | Maße Dimensions | | | | |
|--------------------------|------------------------------------|----------------|-------------------------|---------------------------|---------------------------|-----------|----------|----------|---------------|-------------------|------|----|----|----------------|
| | | | | | | | | | | D | A* | B | L | L ₄ |
| 113DA00500E5A | axial | 1 | ER25 | 8.000 | 1:1 | 25 | ✓ | - | - | 30 | 53,9 | - | - | - |
| 113EA00531E5A | axial | 1 | ER25 | 8.000 | 1:1 | 25 | ✓ | ✓ | 50 | 30 | 79,9 | - | - | - |
| 113FAX00539E5AR | radial | 2 | ER25 | 8.000 | 1:1 | 30 | ✓ | - | - | 30 | 56,9 | 40 | 55 | - |
| 113FAX00539E5AL | radial | 2 | ER25 | 8.000 | 1:1 | 30 | ✓ | - | - | 30 | | | | - |
| 113GAX00539E5AR | radial | 2 | ER25 | 8.000 | 1:1 | 30 | ✓ | ✓ | 100 | 30 | 61,9 | 58 | | - |
| 113GAX00539E5AL | radial | 2 | ER25 | 8.000 | 1:1 | 30 | ✓ | ✓ | | 30 | | | | - |
| 113FBX00539E5AR | radial zurückgesetzt offset | 3 | ER25 | 8.000 | 1:1 | 30 | ✓ | - | - | 30 | 21,9 | 75 | 75 | - |
| 113FBX00539E5AL | | 3 | ER25 | 8.000 | 1:1 | 30 | ✓ | - | - | 30 | | | | - |
| 113GBX00539E5AR | | 3 | ER25 | 8.000 | 1:1 | 30 | ✓ | ✓ | 100 | 30 | 26,9 | 93 | | - |
| 113GBX00539E5AL | | 3 | ER25 | 8.000 | 1:1 | 30 | ✓ | ✓ | | 30 | | | | - |
| 113FDX00539E3A | schwenkbar swiveling F= ±98° | 4 | ER16 | 8.000 | 1:0,88 | 12 | ✓ | - | - | 30 | - | - | 61 | 51,1 |
| 113GDX00539E3A | | 4 | ER16 | 8.000 | 1:0,88 | 12 | ✓ | ✓ | 50 | 30 | - | - | 61 | 56 |

EK: externe Kühlung, IK: interne Kühlung
R: rechte Ausführung, L: linke Ausführung
Maß A*: max. Länge inkl. Spannmutter
Zubehör (ab S. 103) ist nicht im Lieferumfang enthalten.
Technische Änderungen vorbehalten.

EC: external coolant, IC: internal coolant
R: right hand design, L: left hand design
Dimension A*: max. length incl. clamping nut
Accessories (from p. 103) are not included in delivery.
We reserve the right to modify technical contents.

Statische Halter | Static tool holder

| Bestell-Nr. Order No. | Ausführung Tool style | Bild Figure | Maße Dimensions | | |
|--------------------------|------------------------------------------------------------------|----------------|-------------------|----------------|----------------|
| | | | D ₁ | h ₁ | L ₃ |
| 113.5552022 | Vierkant-Queraufnahme rechts Square locking drive radial right | 5 | - | 20x20 | 40 |
| 113.5562022 | Vierkant-Queraufnahme links Square locking drive radial left | 5 | - | 20x20 | 40 |
| 113.5612070 | Vierkant-Längsaufnahme rechts Turning Tool holder axial right | 6 | - | 20x20 | 70 |
| 113.5622070 | Vierkant-Längsaufnahme links Turning Tool holder axial left | 6 | - | 20x20 | 70 |
| 113.5712560 | Bohrstangenhalter Boring bar holder | 7 | Ø25 | - | 60 |

Weitere Ausführungen ab S. 92 | Additional models from p. 92