



TECHNICAL SERVICE BULLETIN

**SB-18-002 CONVENTIONAL FUEL SENDER
GASKET**

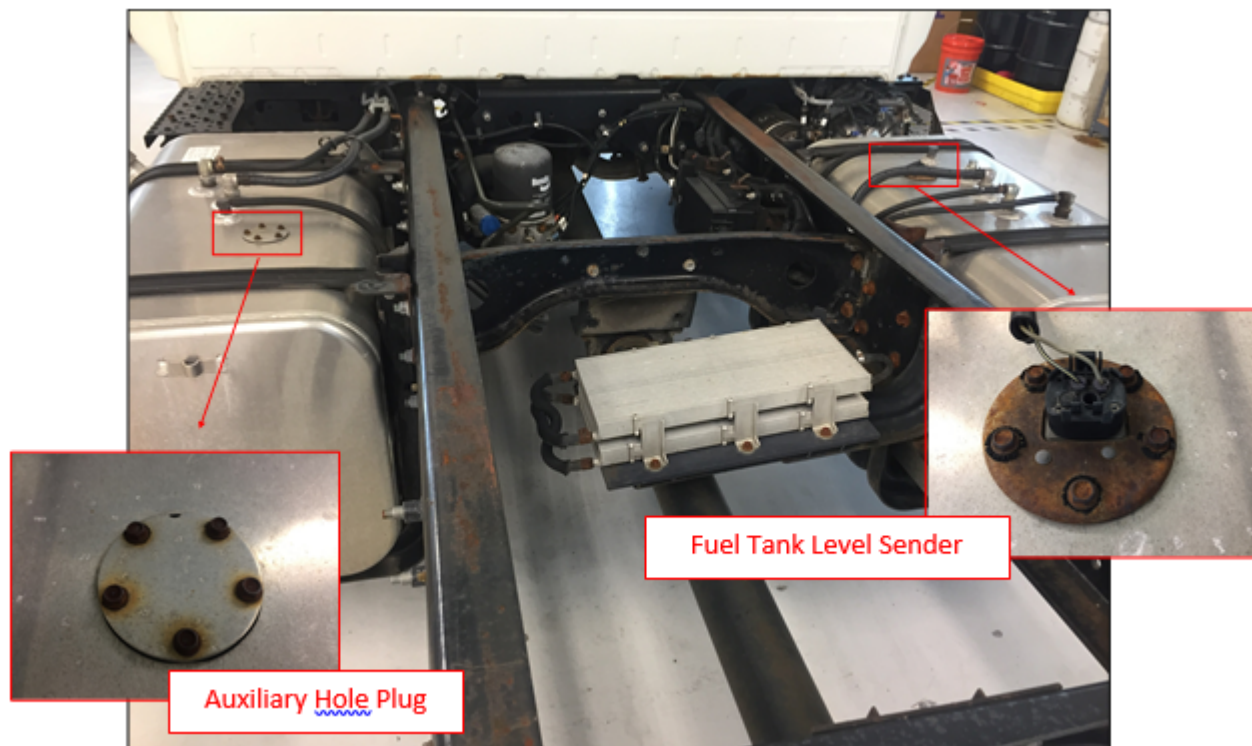
**GROUP: 22-FUEL SYSTEM
BULLETIN NO: SB-18-002
DATE: 1-4-2018
REFERENCE: HMM-170828-B1**

SUBJECT VEHICLES: 08MY-18MY Conventional Trucks equipped with an aluminum fuel tank.

Note: This technical service bulletin is provided as technical information and is not authorization for a warrantable repair.

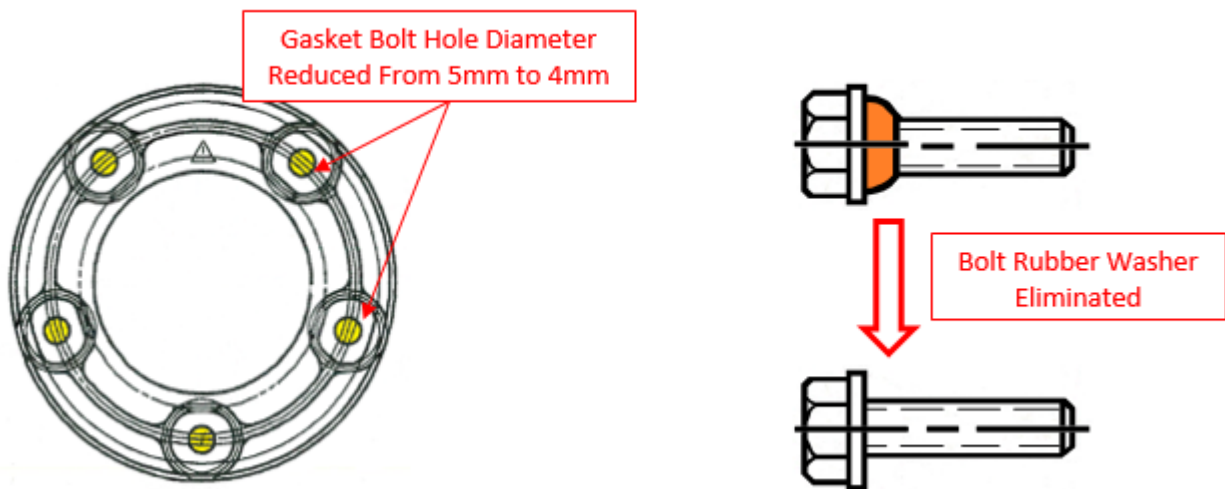
OVERVIEW:

A subject vehicle may experience a reoccurring complaint where excessive diesel fuel residue develops around the fuel level sender and/or auxiliary hole plug on factory installed single or dual fuel tank configurations. An enhanced gasket, bolts and updated installation torque are available for the fuel tank level sender and auxiliary hole plug to resolve this condition.



NOTICE: The photograph above illustrates examples of the fuel tank sender and auxiliary hole plug. The subject vehicle may be equipped with different fuel tank configurations and is dependent upon the model year and vehicle options





BEFORE YOU BEGIN:

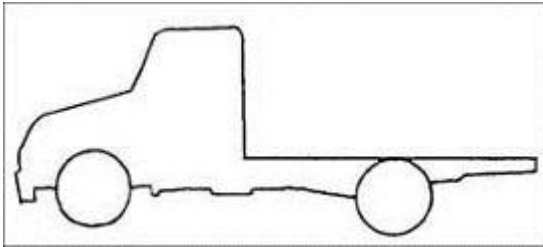
- Read and understand all instructions and procedures before you begin the work.
- Read and follow all **WARNINGS** and **NOTICES** set forth in this publication. These alerts help to avoid damage to components, serious personal injury, or both.
- Park the vehicle on a level and solid surface and apply the parking brake.
- Place the gear shift lever in "Park" or "P".
- Confirm the engine is stopped, the ignition switch is in the off (LOCK) position, and the key is removed.
- Wear safety glasses to prevent eye injuries.
- Place wheel chocks in front of and behind all the wheels to prevent the vehicle from moving.

PARTS:

PART NUMBER	PART DESCRIPTION	QUANTITY
83361E0070	Gasket, Fuel Tank Level Sender	1
S1791E0150	Bolt	1

VEHICLE PREPARATION:

1. Park the vehicle on a level and solid surface.



2. Confirm the engine is stopped, the ignition switch is in the off (LOCK) position, and the key is removed.



3. Apply the parking brake.



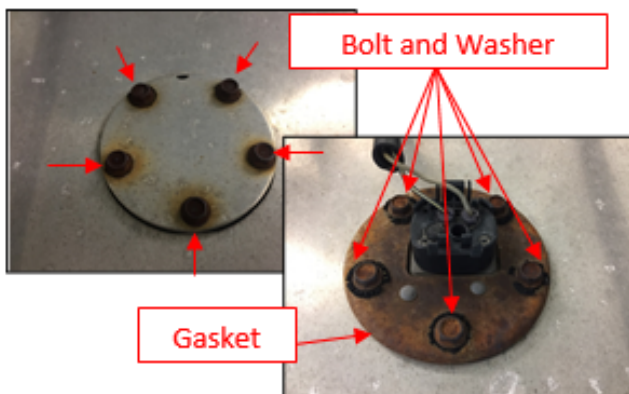
4. Chock all of the wheels.



REPAIR PROCEDURE

1. Remove the fuel tank level sender and/or auxiliary hole cap bolts. Discard the bolts and gasket.

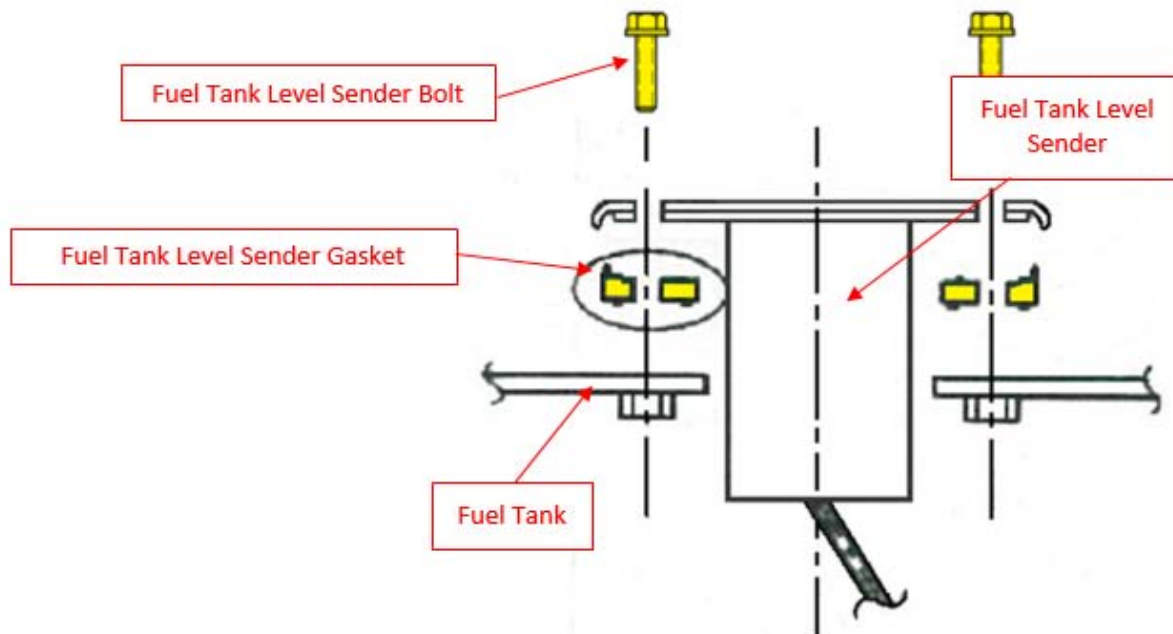
NOTICE: Depending on the fuel tank configuration, fuel tank removal may be required to access the fuel tank level sender or auxiliary hole plug.



2. Install the fuel tank level sender and/or auxiliary plug with new gasket and bolts. Tighten to the specified torque.

Specified Torque: 20 lb-in (2.2Nm)

NOTICE: If fuel tank removal was performed, refer to Engine Workshop Manual, Fuel System (J08E) section EN07-001 for fuel tank installation torque specifications.



FINAL INSPECTION PROCEDURE

1. To complete this Technical Service Bulletin, review the bulletin and confirm the following:

- All components that were removed are correctly installed and fasteners properly torqued.
- If the fuel tank(s) were removed, there are no external diesel fuel leaks from the fuel lines.

CLAIM APPLICATION

*** Reimbursable in accordance within the terms and policies of the Hino Truck limited warranties.**

Fuel Sender Gasket Replacement

- a) Labor Charge: 0.4 Hours– Fuel tank mounted behind cab
1.4 Hours – Fuel tank mounted under cab
- b) Warranty Code: 82662
- c) Trouble Code: 11
- d) Operation Code: 82601BRE– Fuel tank mounted behind cab
82601DRE– Fuel tank mounted under cab
- e) Part Number: 83361E0040

