

THE BEST
of the best
CHOOSE
LONGSTRETH



RE
Beautifully
POWERFUL

JESSICA MENDOZA

*Stanford University, 4-time
1st Team All-American*

*United States Women's
National Softball Team from 2004 - 2010,
Two-time Olympian (2004 Gold Medalist)*

ESPN Color Analyst and Reporter

Louisville "Beautifully Powerful"

L
LONGSTRETH

2014
SOFTBALL CATALOG

800.545.1329 longstreth.com

**SICK
POWER
LEGIT
RESULTS**

**KEILANI
RICKETTS**



Softball: NC12L • Legit Bat: FPLG9 • Sick Bat: FPSICK

WORTH™

Worth Sports, a subsidiary of Jarden Corporation (NYSE: JAH)

AN OFFICIAL SUPPLIER TO THE
2013 NATIONAL CHAMPION OKLAHOMA SOONERS

Think Spring! A fresh season is always an exciting time at Longstreth. However, no matter the time - pre-season, off-season, or any time during the year, we are here to help you along the way! From uniforms and teamwear to bats, helmets and balls our product selection meets the needs of both individual players and teams. Be sure to visit our website, www.longstreth.com, for additional options and full descriptions.

Check out our new line of 2014 equipment! Our mission is to bring the best of the best fastpitch products to all levels of players. This season, we are offering some great new pricing on all of our catcher's gear - 10% off Mix and Match. Buy a complete set across brands and get 10% off! We are proud of our selection, stock, and pricing, we want to keep your players and team in the game!

We also offer special pricing levels for all of our products to support teams and institutions. Give us a call! We look forward to outfitting all of your team needs!

See you on the field!

Your Softball Friends at Longstreth

TEAM PRICING

Team Pricing and College Bat Program. Save money with our team pricing program! Please call us at 1-800-545-1329 for more details.

Sport specialists are available to answer your questions from 9:00 am to 5:30 pm (Eastern Standard Time) Monday thru Friday.



Don't see what you need? Longstreth's customer service team is available to answer all your questions, help you find that unique piece of equipment, and/or select the perfect uniform. Call us today! 800.545.1329 or email: generalinfo@longstreth.com

Important Note:

All Bats are USSSA Approved and ASA Certified; and

All Helmets meet NOCSAE standards.



Longstreth Retail Store Our huge retail store is located just outside Philadelphia, PA. The largest store of its kind. It's worth the trip.

All prices and graphics are subject to change without notice. Colors in catalog may vary slightly from actual product.

Returns Policy For details regarding our return(s) policy, visit our website at www.longstreth.com

 Visit LONGSTRETH SOFTBALL at facebook.com/longstreth.softball

 Follow us on twitter: <https://twitter.com/longstreth5>

TABLE of CONTENTS

Bats	3 - 7
Catcher's Gear	8 - 12
Catcher's Mitts	13
Fielding Gloves	14 - 15
First Base Mitts	15
Batting Helmets	16 - 17
Balls	19
Player Accessories	20 - 21
Bags	22 - 23
Training	
Hitting / Hitting Machines	24 - 25
Fielding / Throwing	26
Educational Materials	26
Pitching	27
Coach's Aids	28
Training Speed / Agility	28 - 29
Screens / Nets	29
Bases / Field	30
Footwear	31
Uniforms	32 - 39
Team Pants	39
Performance Wear	40
Sliders / Socks	41
Jackets / Warmups	42
Ordering Guide	42
Practice Packages	43
DeMarini Apparel	45

Your HOME for All Things Softball

www.longstreth.com

Visit www.longstreth.com for full descriptions and to see our **entire 2014 softball line.**

www.Longstreth.com features:

- Newest Products
- Ask the Expert
- Uniforms & Apparel

Coming soon:

- Videos and Training Tips

Longstreth carries the best selection of all your softball needs - from equipment to uniforms.

Team discounts are available. Call for details!



LONGSTRETH SOFTBALL

800.545.1329

generalinfo@longstreth.com team.sales@longstreth.com



EASTON

THE NEW

BREED OF SPEED

2014 POWER BRIGADE

MAKO AVAILABLE NOW. OTHER MODELS AVAILABLE 11.01.13

NEW MAKO BAT features Thermo Composite Technology!



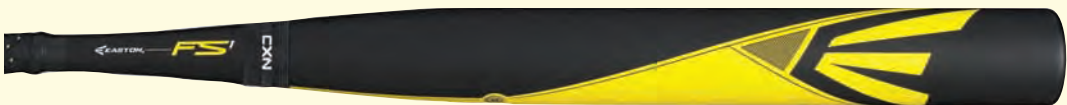
NEW! EASTON MAKO -10 oz.

The new TCT Thermo Composite Technology and the two-piece ConneXion technology allow increased bat speed with the most barrel in the zone.

SEFP14MK \$349.95

MAKO -10 oz.
Length (inches) 32 33 34
Weight (ounces) 22 23 24

EASTON POWER BRIGADE SERIES features the evenly balanced FS Series for fast swing speed!



NEW! EASTON FS1 -10 oz.

FS1 combines the IMX composite technology optimizing the sweet spot with the power that comes from the two-piece ConneXion energy transfer and Focus Flex handle.

SEFP14S1 \$299.95

FS1 -10 oz.
Length (inches) 31 32 33 34
Weight (ounces) 21 22 23 24



NEW! EASTON FS2 -10 oz.

FS2 utilizes IMX composite technology to optimize the sweet spot in a single system providing increased bat control.

SEFP14S2 \$249.95

FS2 -10 oz.
Length (inches) 31 32 33 34
Weight (ounces) 21 22 23 24



NEW! EASTON FS3 -11.5 oz.

FS3 utilizes the IMX composite technology to incorporate lighter weights which enable faster swing speeds in a single system.

SEFP14S3 \$199.95

FS3 -11.5 oz.
Length (inches) 29 30 31 32 33 34
Weight (ounces) 17.5 18.5 19.5 20.5 21.5 22.5

NEW! EASTON FS500 -13 oz.

High-quality 7050 aircraft alloy in an evenly balanced bat for a lighter swing weight and faster swing speed.

SEFP500 \$99.95

NEW! EASTON FS400 -12 oz.

Also constructed with high-quality 7050 aircraft alloy in an evenly balanced bat for maximum swing speed.

SEFP400 \$74.95

NEW! EASTON FS300 -11 oz.

Evenly balanced durable aluminum alloy bat.

SEFP300 \$44.95

NEW! EASTON FS50 -10 oz.

Durable aluminum alloy with full rolled-over end, great for beginning youth.

SEFP50 \$19.95



FS500
 -13 oz.
 30" 17 oz.
 31" 18 oz.
 32" 19 oz.
 33" 20 oz.
 34" 21 oz.

FS400
 -12 oz.
 29" 17 oz.
 30" 18 oz.
 31" 19 oz.
 32" 20 oz.
 33" 21 oz.

FS300
 -11 oz.
 29" 18 oz.
 30" 19 oz.
 31" 20 oz.
 32" 21 oz.
 33" 22 oz.
 34" 23 oz.

FS50
 -10 oz.
 25" 15 oz.
 26" 16 oz.
 27" 17 oz.
 28" 18 oz.
 29" 19 oz.
 30" 20 oz.



ALL BATS IN THIS CATALOG ARE USSSA APPROVED & ASA CERTIFIED





DEMARINI BATS

DEMARINI CF6 SERIES features new Paradox Composite handle!



NEW! DEMARINI CF6 -10 oz.

CF6 with DeMarini's new Paradox Composite - stronger composite providing a softer feel and responsive sweet spot with stronger, stiffer handle.

SWCF6 \$299.95

CF6 -10 oz.

Length (inches) 31 32 33 34

Weight (ounces) 21 22 23 24



NEW! DEMARINI CF6 INSANE -10 oz.

The CF6 Insane with the new D-Fusion handle eliminates vibrations from mis-hits and the new Paradox Composite provides a softer feel in an end loaded version.

SWCF6I \$299.95

CF6 INSANE -10 oz.

Length (inches) 32 33 34

Weight (ounces) 22 23 24



NEW! DEMARINI VENDETTA -12 oz.

Revived with new Paradox Composite, the Vendetta is stronger with a bigger hotter sweet spot.

SWVC614 \$199.95

VENDETTA -12 oz.

Length (inches) 31 32 33

Weight (ounces) 19 20 21



NEW! DEMARINI BUSTOS SIGNATURE -13 oz.

The Bustos Signature composite handle is performance-matched with a DX1 Alloy barrel to create optimum flex and high-energy recoil.

SWBFP14 \$119.95

BUSTOS -13 oz.

Length (inches) 30 31 32

Weight (ounces) 17 18 19

BATTING ACCESSORIES

TUFF SLEEVE

- 9" long synthetic rubber bat sleeve
- Reduces bat fatigue

STTS \$9.95



EVOSHIELD SOFTBALL ELBOW GUARD

- Custom-molding protective elbow shield with elastic strap

SEA121 \$44.95



POWER PAD

- Reduces bat sting and improves grip

SSPP \$4.95



DIRECT PROTECT GUARD

- Prevents sting when jammed

SMDP \$8.95



MACKRACK BAT & HELMET HOLDER

- Number stickers included
- Colors: black, blue, red, pink

SMACKRACK \$11.95



DESIGNATED HANGER

- Number stickers included
- Color: black

SHDH \$17.95



EASTON VRS GRIP

- Improved cushioning
- Color: gray/black

SEVRSG \$6.95

SEG (standard grip) \$4.95



BATTING WARRANTY INFORMATION

Bat warranty questions should be directed to the following customer help lines:

EASTON BAT RETURNS:
1-888-259-1297 www.eastonsports.com

LOUISVILLE BAT RETURNS:
1-800-282-2287 www.louisvilleslugger.com

DEMARINI/WILSON BAT RETURNS:
1-800-937-2287 www.demarini.com

MIZUNO BAT RETURNS:
1-800-966-1211 www.mizunousa.com

WORTH BAT RETURNS:
1-800-282-9637 www.worthbats.com

RIP-IT BAT RETURNS:
www.ripit.com/love-it



**LEAVE
YOUR
MARK**

WITH OUR ALL-NEW
2014 FASTPITCH BATS

JESSICA MENDOZA

OLYMPIC GOLD AND SILVER MEDALIST
SLUGGER PLAYER



LXT

Introducing the first-ever three-piece Fastpitch bat. Pure 360 Composite and TRU3 technology mean a lighter swing weight, no negative vibration on mis-hit balls and a true feel at contact. Backed by the TRU3 30-Day Performance Promise. Love the bat in 30 days or send it back to us.



XENO

Pure 360 Composite gives the bat thinner, stronger walls and a lighter swing weight, while S1D technology provides a larger sweet spot and better overall feel.



M2 PRIDE

Combining two-piece construction and LS-2X Composite Barrel technology, the M2 Pride delivers improved feel and reduced vibration.

*Beautifully
POWERFUL.*

WWW.SLUGGER.COM [f/louisvillefastpitch](#) [@sluggerFP](#)



LOUISVILLE BATS

NEW REDESIGN LXT features strengthened link between barrel and handle!



NEW & IMPROVED! LOUISVILLE LXT -10 oz.
SLFP14X \$349.95

LXT -10 oz.
Length (inches) 31 32 33 34
Weight (ounces) 21 22 23 24



NEW! LOUISVILLE XENO -10 oz.
SLFP14X \$299.95

Best Seller!

XENO -10 oz.
Length (inches) 31 32 33 34
Weight (ounces) 21 22 23 24



NEW! LOUISVILLE M2 -12 oz.
SLFPM214 \$199.95

M2 -12 oz.
Length (inches) 30 31 32 33
Weight (ounces) 18 19 20 21

NEW! LOUISVILLE MENDOZA -13 oz.
100% composite using Louisville's C1C composite with a light balanced and swing.
SLFPMD14 \$99.95

NEW! LOUISVILLE QUEST -12 oz.
Evenly balanced alloy bat. Great for youth!
SLFPQ14 \$49.95

NEW! LOUISVILLE XENO TEE BALL -12.5 oz.
Ideal tee ball bat for youth softball.
SLFPXTB14 \$29.95



MENDOZA
-13 oz.
30" 17 oz.
31" 18 oz.
32" 19 oz.
33" 20 oz.



QUEST
-12 oz.
27" 15 oz.
28" 16 oz.
29" 17 oz.
30" 18 oz.
31" 19 oz.
32" 20 oz.



XENO TEE
-12.5 oz.
24" 11.5 oz.
25" 12.5 oz.
26" 13.5 oz.



MIZUNO BATS



NEW! MIZUNO WHITEOUT END LOADED FP -9 oz.

End loaded Whiteout takes the technology and performance of the Whiteout and shifts the weight towards the end of the barrel for increased power output.

SMFPWOE \$299.95

WHITEOUT END LOAD -9 oz.
Length (inches) 32 33 34
Weight (ounces) 23 24 25

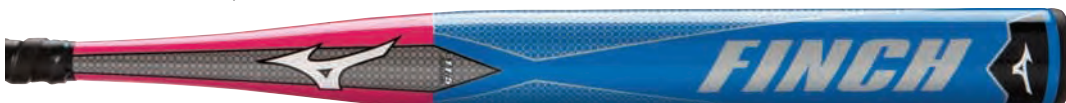


MIZUNO WHITEOUT FP -10 oz.

Mizuno's 3Z technology and Black Onyx Carbon targets 3 zones of the barrel to create a massive sweet spot for increased performance and durability throughout the barrel.

SMFPWO \$299.95

WHITEOUT -10 oz.
Length (inches) 31 32 33 34
Weight (ounces) 21 22 23 24



MIZUNO JENNIE FINCH G5 -11.5 oz.

Balanced swing weight with a cushioned grip for exceptional feel.

SMJFG5 \$56.95

JENNIE FINCH -11.5 oz.
Length (inches) 29 30 31 32 33
Weight (ounces) 17.5 18.5 19.5 20.5 21.5



WORTH BATS



NEW! WORTH LEGIT -11 oz.

100% composite, two-piece construction bat is designed to provide more flex, whip and forgiveness, while the 454 technology extends the sweet spot two inches in both directions.

Balanced loading offering the most true-to-weight feel for maximum bat control and consistency.

SWFPLGT11 \$249.95

LEGIT -11 oz.
Length (inches) 31 32 33
Weight (ounces) 20 21 22



NEW! WORTH SICK 454 -12 oz.

Sick 454 utilizes the 454 technology for the largest sweet spot in a one piece construction, while the lighter weight facilitates increased bat speed.

SWFPSK \$199.95

SICK -12 oz.
Length (inches) 31 32 33
Weight (ounces) 19 20 21



NEW! WORTH ECLIPSE -12 oz.

Eclipse is 100% composite using a lightweight construction for the perfect combination of swing speed and power.

SWFPEC14 \$59.95

ECLIPSE -12 oz.
Length (inches) 28 29 30
Weight (ounces) 16 17 18

RIP-IT BATS



NEW! RIP-IT DROP 10 AIR -10 oz.

Rip-It's R2 Composite provides the strength from the number of layers along with the Air technology and the Harmonic Barrel amplifies contact allowing for faster swing speeds from a balanced bat.

SRF1410 \$299.95

AIR -10 oz.
Length (inches) 31 32 33 34
Weight (ounces) 21 22 23 24



WHITEDOUT™

FP



Jennie Finch

END
LOADED

BALANCED

- **NEW 3Z TECHNOLOGY** targets 3 zones of the barrel to enhance and create a massive sweet spot and better bat control
- **ANTI-SHOCK CONSTRUCTION** for more reduced vibration
- **BLACK ONYX CARBON** utilized for maximum performance and durability

BLACK
ONYX
CARBON™



Like us on:
[facebook.com/MizunoFastPitchNorthAmerica](https://www.facebook.com/MizunoFastPitchNorthAmerica)



Follow us on:
twitter.com/MizunoFastPitch



www.mizunousa.com/fastpitch

LIGHTEST, MOST ADVANCED CATCHER'S GEAR YET

Kaylyn Castillo C, Akron Racers



ProMOTION CATCHER'S GEAR

Kaylyn Castillo chooses ProMotion because it provides fitted, flexible protection without adding bulk or stiffness.

WILSON CATCHER'S GEAR

Wilson's ProMotion gear was developed with Olympian and professional catcher, Lauren Lappin. The unique features enable this gear to form to and move with the fastpitch athlete's body, providing the **best fit on the market!!**



WILSON PRO STOCK SHOCK FX 2.0 CATCHER'S HELMET

Designed for the female athlete

Floating mask system with extended cage absorbs up to 50% more impact. Ventilation reduces weight and provides maximum air flow. Dri-Lex moisture management liner.

Stock colors: black, royal, red, or navy

Sizes: S/M (6 1/8" - 7 1/8")

SWTA5540 \$141.95

Special order: L/XL (7" - 7 1/8")



back view

WILSON PROMOTION CHEST PROTECTOR

Designed for the female athlete

3D fit - the Throw-Motion Stretch Zone flexes in multiple directions providing greater mobility when throwing. The IsoB-LOX Impact Protection provides sternum protection while deadening the impact.

Size: Adult, 16.5" body length

Stock colors: black, royal, red, or navy

SWTA3341 \$116.95



WILSON PROMOTION LEG GUARDS

Designed for the female athlete

Contoured specifically for right and left legs, improving fit, mobility and protection! The HD Foam thigh caps and the IsoBLOX Impact Protection provide light weight, breathable protection.

Size: Intermediate, 14.5" from mid-knee to top of foot

Stock colors: black, royal, red, or navy
SWTA3541 \$141.95



Wilson special order colors: dark green, maroon, purple

Great Youth Catcher's Package!

WILSON EZ GEAR CATCHER'S KIT

Includes helmet, leg guards, and chest protector.

Sizes: S/M - Chest Protector 12"; Leg guard 11"

L/XL - Chest Protector 15"; Leg guard 13"

Stock color: black

SWTA3683 SALE \$90.00 (reg. price \$109.95) while supplies last



SCHUTT CATCHER'S GEAR

Schutt Catcher's Gear continues to be one of our best selling brands!

Best Seller!



SCHUTT HOCKEY STYLE HELMET

Constructed from strong lightweight materials. Offers excellent peripheral vision.

Size: One size fits most (6 5/8" - 7 1/2")

Stock colors: black, royal, scarlet, or navy

Special order colors: maroon or dark green

SS2966 \$82.95



back view

SCHUTT SCORPION CHEST PROTECTOR

Designed for the female athlete

Beefed up protection over the chest and heart. Coolmax lining and ventilation holes throughout the padding.

Size: 15" body length

Stock colors: black/gunmetal, royal/gunmetal, scarlet/gunmetal, or navy/gunmetal

SS127041 \$56.95



SCHUTT SCORPION DOUBLE LEG GUARDS

Designed for the female athlete

Lightweight with great ventilation. Gel Knee Cap gives extra protection with a soft gel pad.

Size: 16" from mid-knee to the top of foot

Stock colors: black/gunmetal, royal/gunmetal, scarlet/gunmetal, or navy/gunmetal

SS12646 \$62.95



Schutt special order colors: maroon/gunmetal or dark green/gunmetal

EASTON CATCHER'S GEAR

Rubberized matte finish!



NEW! EASTON RIVAL C HELMET

ABS shell provides uncompromising protection with maximum air vents. Multi-layer tech foams provide impact dispersion and comfort.

Size: Small (6 1/8" - 7")

Stock colors: black, royal, navy, or red

SERH \$89.95

Special order: Large (7" - 7 1/8")



back view

EASTON SYNGE FASTPITCH CHEST PROTECTOR

Designed for the female athlete

Form-fitting design provides maximum protection. Comfort form foam outer layer deadens ball upon impact.

Size: 16" body length (adult), 14" body length (intermediate)

Stock colors: black, royal, red, or navy

SESCP11A 16" \$99.95

SESCP11 14" \$84.95



EASTON SYNGE FASTPITCH LEG GUARDS

Designed for the female athlete

Lightweight shin, knee and toe plates for ideal protective fit.

Size: 14" from mid-knee to the top of foot

Stock colors: black, royal, red, or navy

SESFLG11 \$99.95



Easton special order colors: green, maroon, or purple

Package It and Save 10%! Mix and Match Any Brand.

Combine one helmet, chest protector, and leg guard set and receive 10% off! Mix and match brands to make your own customized package! When ordering online, place any combination in your shopping cart and a 10% discount will be applied.



EASTON STEALTH SE CATCHER'S HELMET

Size: Small (6 1/8" - 7")

Stock colors: black, royal, navy, or red

SESEH SALE \$99.95

(reg. price \$112.95) while supplies last

MIZUNO CATCHER'S GEAR

Matte finish!



MIZUNO SAMURAI HOCKEY STYLE HELMET

Strategic ventilation system for comfort and breathability. Steel framed mask for maximum protection and durability.

Size: Youth (6 ½" - 7 ¼")

Stock colors: black, royal, red, or navy

SMSHH \$82.95

Special order: adult (7 ¾" - 7 ⁵⁄₈")



back view

MIZUNO SAMURAI CHEST PROTECTOR

Designed for the female athlete

Innovative lightweight construction for durability and comfort. Moisture wicking Drylite liner.

Size: 14.5" body length

Stock colors: black, royal, red, or navy

SMSG3CP \$77.95



MIZUNO SAMURAI LEG GUARDS

Designed for the female athlete

Innovative lightweight construction for durability and comfort. Patented detachable K-Pad for a superior fit and critical knee protection.

Size: 15" from mid-knee to the top of foot

Stock colors: black, royal, red, or navy

SMSG3LG \$82.95



Mizuno special order colors: red/gray, royal/gray, navy/gray, cardinal/gray, forest/gray, purple/gray, black, red/black, red/navy, royal/red, black/athletic gold, black/orange, forest/athletic gold, purple/black

CHAMPRO CATCHER'S GEAR



CHAMPRO HOCKEY STYLE HELMET

Multi-density compression molded pad system with moisture wicking lining. Air-tech ventilation system and lightweight narrow wire steel alloy face-guard.

Size: Youth (6 ½" - 7")

Stock colors: black, royal, red, or navy

SCCM6Y \$74.95

Special order: Varsity (7" - 7 ½")



BACK VIEW

CHAMPRO CHEST PROTECTOR

Designed for the female athlete

Contour fit, low rebound triple density cushion system. Moisture wicking anti-microbial lining.

Size: 16.5" body length

Stock colors: black, royal, red, or navy

SCCP65 \$38.95



CHAMPRO DOUBLE KNEE LEG GUARD

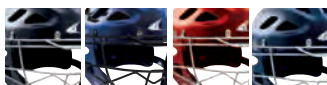
Designed for the female athlete

Perforated foam with removable Air-Tech lining. Side wings with full padding.

Size: 14.5" from mid-knee to top of foot

Stock colors: black, royal, red, or navy

SCCG84 \$47.95



Champro special order color: forest green

Package It and Save 10%! Mix and Match Any Brand.

Combine one helmet, chest protector, and leg guard set and receive 10% off!
Mix and match brands to make your own customized package!

When ordering online, place any combination in your shopping cart
and a 10% discount will be applied.

DIAMOND CATCHER'S GEAR



DIAMOND HOCKEY STYLE HELMET

Lightweight, impact-resistant shell with ventilation. Multi-layer mesh covered comfort foam with Quick-Dry technology.

Stock colors: black, royal, navy, red

Sizes: Small (6 1/2" - 7"),
Large (7 1/8" - 7 1/2")

SDHH Large \$84.95
SDHH Small \$74.95



back view

DIAMOND DCP-IX3FP CHEST PROTECTOR

Designed for the female athlete

Vented IX3 triple layer low-rebound padding. Fully adjustable harness with removable shoulder caps and contour fit.

Size: 16" body length

Stock colors: black, royal, navy, red

SDDCPIX3 \$56.95



DIAMOND DLG-IX3 LEG GUARD

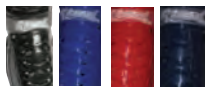
Designed for the female athlete

Pro-style compressed knee protection, fully vented with breathable padded mesh backing.

Size: 14.5" from mid-knee to top of foot

Stock colors: black, royal, navy, red

SDDLG1X3 \$56.95



Diamond special order colors: green, maroon

CHAMPION CATCHER'S GEAR



ONE SIZE
FITS ALL



CHAMPION HOCKEY STYLE HELMET

Shell is made of high impact ABC plastic with 16 ventilation holes. Features a Velcro™ adjustable vinyl chin pad.

Size: Youth (6 3/8" - 7 1/8")

Color: black

SCH400 \$54.95



CHAMPION CHEST PROTECTOR

Multi-layered low rebound foam with removable shoulder cap and adjustable harness.

Size: 16.5" body length

Color: black

SCP100S \$24.95



CHAMPION DOUBLE KNEE LEG GUARD

Extended wing protection.

Size: 13" from mid-knee to top of foot

Color: black

SCLG83A \$28.95

CHAMPION SINGLE KNEE GUARD

(NOT SHOWN)

Size: 11" from mid-knee to top of foot

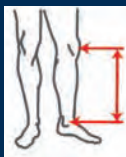
Color: black

SCSLG84 \$18.95

SIZING INFORMATION FOR ALL CATCHER'S GEAR

CHEST PROTECTOR SIZING

To determine your body length, measure from the top of your collar bone to the bottom of your navel



LEG GUARD SIZING

To determine the best size, measure from the middle of your knee to the top of your foot

- Extra bulk hinders the chest protector from providing the best protection. Therefore, make sure your chest protector fits snug.

- When the catcher squats, the chest protector should cover all vital parts. Make sure you move around and test all positions when trying on your new gear.

- Leg guards should be snug enough not to spin all the way around.

CATCHER'S BAGS



NEW! LOUISVILLE CATCH-ALL CATCHER'S BAG

- Designed specifically for catchers with a mesh helmet cinch bag
- Internal holsters for leg guards and extra room for chest protector
- Lockable bat compartment
- Rigid bottom for wheel support and durability
- Color: platinum gray
- 35" long x 16.5" wide x 11" deep



SLCAWB **\$134.95**



NEW! WILSON PUDGE BAG ON WHEELS

- Main compartment large enough for a full catchers set, helmet, glove and cleats!
- Separate leg guard pockets and valuables side pocket
- Rugged and durable wide set wheels with reinforced housings
- Color: black
- 38" long x 15" wide x 13" deep

SWTA9702 **\$119.95**
Limited stock. While supplies last.



NEW! MIZUNO SAMURAI CATCHER'S BAG

- Large bag designed for catchers!
- Holds 2 bats
- Easy access footwear compartment
- Accessory compartment for valuables
- Durable off-road wheels
- Color: black
- 35" long x 12" wide x 14" deep

SMSCWB **\$84.95**



NEW! EASTON STEALTH CORE CATCHER'S BAG

- U-zip access for leg guards
- End pockets for helmet and mitt pockets
- Side pocket for chest protector
- Bat sleeve holds 2 bats
- In-line skate wheels
- Color: black
- 35" long x 14" wide x 14" deep

SESCCB **\$64.95**

CATCHER'S ACCESSORIES

SCHUTT KNEE SAVERS

- Will fit any manufacturer's leg guards
- Color: black

SSKS **\$19.95**



PALMGARD'S INNERGLOVE WITH WRISGARD™

- Larger padding area including thumb and wrisgard™
- Left hand (special order right hand)
- Sizes: S - L

SPGAEWG **\$24.95**



KNEE SAVERS

- Reduces knee stress
- Fits most standard leg guards
- Color: black

SAKS **\$24.95**



EVOSHIELD HOURGLASS THUMB GUARD

- Custom-molding
- Protective hourglass shaped shield
- Designed for the female hand

SEA131H **\$19.95**



KNEE SAVERS We stock adult size knee savers. Call to order youth size. (SAKSY)

THROAT PROTECTOR SSTPY

- Fits most masks

\$4.95



PALMGARD GLOVE

- Special padding area
- Sizes: S - XL, YS - YL
- Available for right or left hand

SPGK Adult size **\$17.95**
SPGK Youth size **\$17.95**



SHOCK STOP

- Minimizes bone bruises
- Can be worn on either hand
- One size fits all

SMSS **\$18.95**



GLOVEMATE

- Covers hand area most vulnerable to sting
- Available for left or right hand

SGMP **\$8.95**



CATCHER'S MITTS

All catcher's mitts are designed for female fastpitch athletes. They feature narrow fingers, smaller wrist openings, and a wider pocket for softballs.



MIZUNO MVP CATCHER'S MITT

- Power Lock™ closure provides secure fit
- Para Shock™ palm pad
- 34" circumference

SMGXS57

\$109.95



MIZUNO MVP PRIME CATCHER'S MITT

- Smooth, oil soft leather, ultra soft palm liner
- Power Lock™ closure provides secure fit
- Para Shock™ palm pad
- 34" circumference

SMGXS53

\$109.95



Best Seller!

MIZUNO FRANCHISE PRO CATCHER'S MITT

- Power Lock™ closure provides secure fit
- Para Shock™ palm pad
- 34" circumference

SMGXS92

\$62.95



NEW! LOUISVILLE XENO CATCHER'S MITT

- Xeno best-in-class premium leather matched with soft linings for game-ready feeling from the first use
- 33" or 34" circumference

SLXCM 33"

\$80.95

SLXCM2 34"

\$80.95

Note: 34" has a limited quantity



NEW! LOUISVILLE M2 JESSICA MENDOZA CATCHER'S MITT

- Created with Jessica Mendoza for all levels of play
- Closed pocket with Velcro strap
- 33" circumference

SLM2CM

\$64.95



NEW! WILSON YAK CATCHER'S MITT

- Ecco ProSoft Yak leather is 3x stronger than cowhide allowing it to be thinned to produce a lighter glove
- Opening at pinky for easy closing
- 33" circumference

SWAYAKCM

\$99.95



NEW! WILSON A600 CATCHER'S MITT

- Full grain leather shell
- Dual-welting for superior fit
- 33" circumference

SWA600PCM

\$54.95



EASTON'S NATURAL ELITE CATCHER'S MITT

- Game-ready, soft oil-tanned leather
- Protective palm pad, double deep pocket
- Bio-Dri fabric lines fingers
- 33" circumference

SENEFPCM

\$74.95

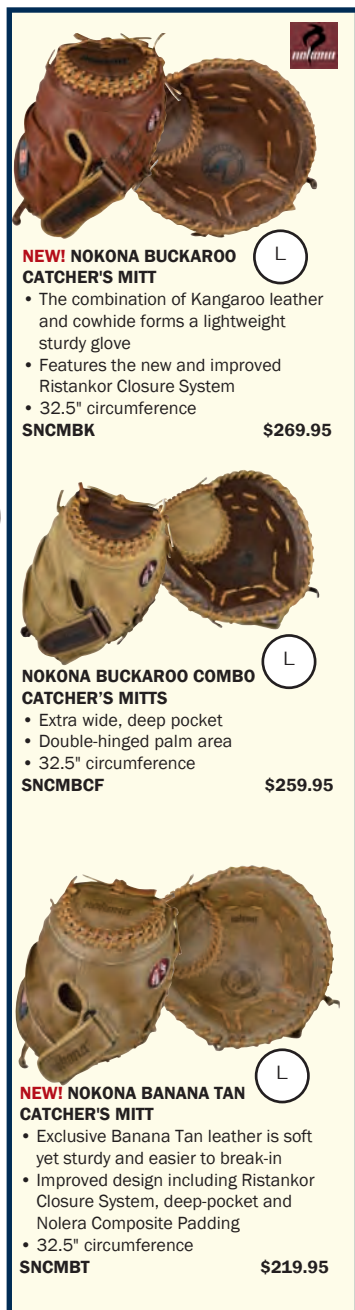


EASTON SYNERGY CATCHER'S MITT

- Game-ready soft oil-tanned leather
- Protective palm disperses ball impact
- Great for young catchers!
- 33" circumference

SESYFPCM

\$56.95



NEW! NOKONA BUCKAROO CATCHER'S MITT

- The combination of Kangaroo leather and cowhide forms a lightweight sturdy glove
- Features the new and improved Ristankor Closure System
- 32.5" circumference

SNCMBK

\$269.95



NOKONA BUCKAROO COMBO CATCHER'S MITTS

- Extra wide, deep pocket
- Double-hinged palm area
- 32.5" circumference

SNCMBCF

\$259.95



NEW! NOKONA BANANA TAN CATCHER'S MITT

- Exclusive Banana Tan leather is soft yet sturdy and easier to break-in
- Improved design including Ristankor Closure System, deep-pocket and Nolera Composite Padding
- 32.5" circumference

SNCMBT

\$219.95

FIELDERS GLOVES

All fielders' gloves are designed for female fastpitch athletes, featuring narrow fingers, smaller wrist openings, and a wider pocket for softballs.



MIZUNO CLASSIC PRO SOFT

- Throwback leather, rugged, rich, and naturally pre-oiled, maintains shape over time
- Tartan web vertically laced heel for custom break in

SMGCF1252 12.5" \$179.95



MIZUNO MVP PRIME

- Smooth, oil soft leather and ultra soft palm liner
- V-Flex notch for easy closure

SMGMVP1259P 12.5" \$99.95
SMGMVP1279 12.75" \$99.95

Best Seller!



MIZUNO MVP

- Full-grain American steerhide game-ready leather
- Double hinged heel for extra wide pocket
- V-Flex notch for easy closure and Power Lock™ closure

SMGMVP1200 12" \$99.95
SMGMVP1250 12.5" \$99.95



NEW! MIZUNO FRANCHISE

- Franchise is made of Java leather that is game ready and long lasting

SMGFN1200 12" \$62.95
SMGFN1250 12.5" \$62.95
SMGFN1300 13" \$62.95



MIZUNO PROSPECT

- Double hinge heel helps players learn to catch
- V-Flex notch for easy closure

SMGPL1209B 12" \$49.95



NEW! LOUISVILLE XENO

- Xeno best-in-class premium leather matched with soft linings for game-ready feeling

SLX1250 12.5" \$80.95
SLX1300 13" \$80.95



NEW! LOUISVILLE M2 JESSICA MENDOZA

- Created with Jessica Mendoza for all levels of play with narrow finger stalls and smaller wrist opening

SLM21250 12.5" \$64.95



NEW! LOUISVILLE ZEPHYR

- Buffalo leather palm
- Lightweight nylon mesh back
- Bruise-gard™ palm padding

SLZ120014 12" \$45.95
SLZ125014 12.5" \$45.95



NEW! LOUISVILLE DIVA

- Buffalo leather palm
- Lightweight nylon mesh back for easy closure
- Specifically designed for developing players

SLDV105014 purple 10.5" \$27.95
SLDV115014 pink 11.5" \$27.95



EASTON SYNERGY

- Game-ready, soft tumbled oil-tanned leather with protective palm pad
- Bio-Dri™ fabric lines finger stalls
- Ideal Fit system comfort

SESYFP1200 12" \$54.95
SESYFP1250 12.5" \$54.95

1st BASE MITTS



NEW! LOUISVILLE XENO 1B MITT

Designed for the female athlete

- Xeno best-in-class premium leather matched with soft linings for game-ready feeling from the first use

SLXFB 13" \$80.95



NEW! LOUISVILLE M2 JESSICA MENDOZA 1B MITT

Designed for the female athlete

- Created with Jessica Mendoza for all levels of play

SLM2FB 13" \$64.95



NEW! NOKONA X2 ELITE

- Nokona's highest-performance, ready for play series
- Made with distinct combinations of Nokona's proprietary Stampede, Steerhide, Kangaroo Leather, and Nolera Composite Padding System

SNFGX21250 12.5" \$329.95



NEW! NOKONA BUCKAROO

- The combination of Kangaroo leather and cowhide forms a lightweight sturdy glove
- Features the new and improved Ristankor Closure System

SNFG1200BK 12" \$269.95
SNFG1250BK 12.5" \$269.95



NEW! NOKONA BANANA TAN

- Exclusive Banana Tan leather is soft yet sturdy and easier to break-in
- Improved design including Ristankor Closure System, deep-pocket and Nolera Composite Padding

SNFG1200BT 12" \$219.95
SNFG1250BT 12.5" \$219.95
SNFG1300BT 13" \$219.95



NOKONA BUCKAROO BLACK

- Buckaroo series in black
- Regular cowhide pocket, kangaroo back
- Interlocking weave web

SNFG600KFPK 12.5" SALE \$200.00
SNFG650KFPK 13" SALE \$200.00
 (reg. price \$239.95) while supplies last.



WILSON A2000

- Pro-stock leather known for its durability and unmatched feel
- Dual-welting and Super Skin™ back for durability and long lasting break in

SWA2000F 11.75" \$229.95
SWA2000FSS 12.5" \$229.95



NEW! WILSON YAK

- Ecco ProSoft Yak leather is 3x stronger allowing it to be thinned to produce a lighter glove
- Low profile heel provides flexibility and opens up the palm

SWAYAK1200 12" \$94.95



NEW! WILSON A800

- Exclusive Ecco leather that is game ready and provides softness on the first day
- Low profile heel makes the glove more flexible

SWA8001250 12.5" \$66.95



NEW! WILSON A600

- Full grain leather palm and shell
- Dual-welting for superior fit

SWA6001200 12" \$49.95
SWA6001250 12.5" \$49.95



MIZUNO MVP 1B MITT

- Full-grain American steerhide game-ready leather
- Adjustable wrist great for larger and smaller hands

SMGXF56 13" \$109.95



MIZUNO FRANCHISE 1B MITT

- Power Lock™ closure for secure fit
- Para Shock™ palm pad
- Double bar open web

SMGXF92 12.5" \$62.95



EASTON NATURAL ELITE 1B MITT

Designed for the female athlete

- Split solid web with ideal fit

SENEFPFB 13" \$74.95

BATTING HELMETS

All Longstreth batter's helmets & faceguards meet NOCSAE standards!



WILSON



NEW! WILSON COLLEGIATE 2.0 BATTING HELMET WITH MASK

- Polished look and a snug fit; unrivaled molded padding system
- Strategic venting reduces weight and maximizes air flow
- Sizes: Small ($6 \frac{7}{8}'' - 7''$); Medium ($7 \frac{1}{8}'' - 7 \frac{1}{4}''$); Large ($7 \frac{3}{8}'' - 7 \frac{1}{2}''$)
- Stock color: black
- Special order colors: navy, dark green, royal, scarlet, white

	<u>1-11</u>	<u>12+</u>
SWCBH2	\$54.95	\$44.95

MIZUNO



NEW! MIZUNO MVG2 HELMET WITH FP MASK

- Durable shell with Drylite liner
- Sizes: S/M ($6 \frac{3}{4}'' - 7 \frac{3}{8}''$); L/XL ($7 \frac{3}{8}'' - 7 \frac{7}{8}''$);
- Stock color: black
- Special order colors: red/white, royal/white, navy/white, cardinal/white, forest/white, purple/white, or white/black

	<u>1-11</u>	<u>12+</u>
SMVPHG214	\$49.95	\$41.95

RIP IT



RIP-IT VISION PRO HELMET WITH FACE MASK

- Black-out technology eliminates glare
- Dual-Layer memory foam
- 21 air vents and ultra-light weight
- Size: One size fits most ($6 \frac{3}{8}'' - 6 \frac{7}{8}''$)
- Stock colors: black, royal, navy, red
- Special order colors: purple, green

	<u>1-11</u>	<u>12+</u>
SRIVISJ	\$54.95	\$40.95

Easton, Mizuno, Rip-It, and Worth Helmets are available for team orders in SPECIAL ORDER COLORS. Call for details!



RIP-IT BATTER'S FACE GUARD

- Eliminates blind spots
- Fits most helmets
- Colors: black

	<u>1-11</u>	<u>12+</u>
SRIPIT	\$19.95	\$14.95

EASTON



EASTON NATURAL GRIP HELMET WITH FACE MASK

- High grade ABS shell with rubberized matte finish
- Bio-Dri moisture management padding liner
- Size: Junior ($6 \frac{3}{8}'' - 7 \frac{1}{8}''$)
- Senior ($6 \frac{7}{8}'' - 7 \frac{1}{8}''$) special order only
- Stock colors: black, royal, navy, red
- Special order colors: black, navy, red, royal, white, green, maroon, purple, orange, texas orange, gold, vegas gold

	<u>1-11</u>	<u>12+</u>
SEA168033	\$44.95	\$34.95

NATURAL HELMET PADDING FIT KIT

- Enhance Easton Natural helmet fit
- Includes double stick fasteners to attach additional pads

SEA168050	\$9.95
------------------	---------------



EASTON NATURAL TWO-TONE HELMET

- Slim profile and aerodynamic venting
- Soft urethane comfort foam
- Size: Junior ($6 \frac{3}{8}'' - 7 \frac{1}{8}''$)
- Senior ($6 \frac{7}{8}'' - 7 \frac{3}{8}''$) special order only
- Stock colors: black/silver, royal/silver, navy/silver, red/silver
- Special order colors: green/silver, maroon/silver, purple/silver

	<u>1-11</u>	<u>12+</u>
SEA168013	\$29.95	\$24.45

EASTON SOFTBALL MASK

- Tri-bar face mask design for protection with maximum vision
- Only fits Easton helmets
- Sizes: junior or senior (special order)
- Color: silver



	<u>1-11</u>	<u>12+</u>
SEA168004	\$14.45	\$11.95

WORTH



AWAY HELMET

MATTE



POLISHED

WORTH LIBERTY BATTING HELMET

- Wicking material lined padding
- Includes decal numbers and storage bag
- Size: One size fits most ($6 \frac{3}{8}'' - 7 \frac{3}{4}''$)
- Stock colors with white accent: black, navy, royal, or red
- Special order home colors: columbia blue, dk. green, maroon, orange, purple, texas orange, vegas gold. Special order away colors: dk. green, maroon, orange, purple, texas orange

	<u>1-11</u>	<u>12+</u>
SWABHM away	\$39.95	\$32.95
SWLBH home	\$36.95	\$29.95

WORTH FACE GUARD

- Softball specific face guard
- Only fits Worth helmets
- Color: black



	<u>1-11</u>	<u>12+</u>
SBWG2	\$13.95	\$10.95



NEW! SCHUTT AIR 6 HELMET

- Engineered for a truer fit
- Size: One size fits most (6 1/2" - 7 1/2")
- Stock colors: black, royal, navy, red
- Special order colors available

	<u>1-11</u>	<u>12+</u>
SS3106	\$21.95	\$18.95



SCHUTT AIR 3 PONYTAIL HELMET

- Maximum air ventilation
- Dual density foam pads
- Pre-drilled for batter's guards
- Size: One size fits most (6 1/2" - 7 1/2")
- Stock colors: black, royal, navy, red
- Special order colors available

	<u>1-11</u>	<u>12+</u>
SSA3PTH	\$26.95	\$21.95



Special Order Custom Helmets!

NEW! SCHUTT AIR 4.2 AND 5.6 HELMETS

- New D30 Aero Impact foam absorbs and disperses energy upon impact
- Size: One size fits most (6 1/2" - 7 1/2")
- Special order only. All team colors available

	<u>1-11</u>	<u>12+</u>
SS3242 4.2	\$24.95	\$20.45

SCHUTT AIR 5.6 CUSTOM FITTED HELMET

- Size: fitted 2XS - XL

	<u>1-11</u>	<u>12+</u>
SS3256 5.6	\$25.95	\$21.45



SCHUTT AIR-LITE GUARD

- Fits all Schutt helmets.
- Stock color: black
- Special order colors: almost all team colors available

	<u>1-11</u>	<u>12+</u>
SS123300	\$12.95	\$9.95
SS123300A (attached)	\$14.95	\$12.95

FEATHERED WAVE TRI COLOR

CUSTOM HELMETS MADE EASY!

1. SIMPLY CHOOSE A HELMET:
AiR Maxx T, AiR 5.6, AiR 4.2, AiR-5 PT, AiR-3 PT, AiR-6, AiR Pro Fitted, AiR Pro OSFM (one size fits most), 2966 Hockey Style Catcher's Mask
2. SELECT PAINT STYLE
3. SELECT PRIMARY COLOR, ACCENT COLOR
4. CALL LONGSTRETH TO PLACE ORDER

800-545-1329 Minimum order for custom batter's helmets is three pieces (catcher's helmet minimum is one). See longstreth.com for details.

RAWLINGS YOUTH HELMETS



RAWLINGS TEEBALL COOLFLO® YOUTH HELMET

- Coolflo® venting technology
- Dual density foam for protection
- Size: XS (6 1/4" - 6 7/8")
- Stock color: black

SRCFTBS **\$19.95**



RAWLINGS COOLFLO® METALLIC YOUTH HELMET

- Painted metallic finish
- Moisture wicking
- Pre-drilled for face guards
- Size: One size fits most
- Stock colors: black, red, royal, or navy

SRCFBHM **\$24.95**

RAWLINGS TEE BALL FACE GUARD

- Fits tee ball Coolflo® helmet only

SRABCRWGS **\$13.95**

RAWLINGS FACE GUARD

- Fits most Rawlings helmets
- Stock color: black

SRWG **\$13.95**

REPLACEMENT / HARDWARE

REPLACEMENT CHIN STRAPS

SRRCS **\$2.95**

SCHUTT BATTER'S GUARD

HARDWARE SSSFH **\$5.95**

HELMET SIZING

Measure your head above the ears with a tape measure. Use the chart below to convert to standard helmet size.

Adult Hat Size Conversion Chart		
Hat Size	Size	Head in Inches
6-1/8	SMALL	19-1/8"
6-1/4	SMALL	19-1/2"
6-3/8	SMALL	19-7/8"
6-1/2	SMALL	20-1/4"
6-5/8	SMALL	20-3/4"
6-3/4	SMALL	21-1/8"
6-7/8	SMALL	21-1/2"
7	MEDIUM	21-7/8"
7-1/8	MEDIUM	22-1/4"
7-1/4	MEDIUM	22-5/8"
7-3/8	LARGE	23"
7-1/2	LARGE	23-1/2"
7-5/8	X-LARGE	23-7/8"
7-3/4	X-LARGE	24-1/4"
7-7/8	XX-LARGE	24-5/8"



AiR4.2

OSFM

with our exclusive
ENERGY LOCK TECHNOLOGY

Powered by D30®

All New Energy Lock Technology

Features new D30® Aero Impact Foam, which is a lightweight, soft and flexible padding that disperses energy upon impact.



AiR 4.2

AiR 5.6 (Fitted)



AiR Pro 4.2

AiR Pro 5.6 (Fitted)

Patented Impact Absorption

D30® features a unique molecular structure allowing it to remain soft and flexible. Upon impact, however, the molecules lock together to absorb and disperse energy before instantly returning to their normal flexible state.

Fitted Model: AiR 5.6 (2XS - XL) • Antimicrobial • Traditional, XE Shell Designs • Chin Strap Snaps • Pre-Drilled Holes • Mechanically Attached Cushioning • Multiple Ventilation Holes for Maximum Air Flow • Standard, Custom Colors



What is D30®?

The single, most advanced helmet cushioning system in baseball or softball.

Measurable Advantage

At the same thickness, the D30® technology transmits 53% less force than vinyl nitrile and PE/EVA Foam.

How D30® Molecules Work



- Maximum Flexibility
- Lightweight
- Breathable
- Extremely Comfortable
- Trusted Protection
- Tested to Highest Standards

D30® is a registered trademark of Design Blue Limited

D30®



YOUR TEAM. YOUR COLORS. YOUR STYLE.
complete customization for your helmet



Virtually Unlimited
Color Combinations

Thousands of Colors to
Choose From

Color Match Any Color

Eclipse



Rise



Feathered Wave



Feathered Bill



Feathered Wrap



Masked Bill



Masked Triangle



Sweep



Aero



Triple Crown



Dynasty



BALLS

GAME/PRACTICE BALLS



CORK

DUDLEY OFFICIAL HIGH SCHOOL YELLOW BALL
NFHS 12"
SDB12FP YR \$62.95 doz.
ASA 12"
SDB4A311Y \$62.95 doz.



CORK

WORTH NCAA BALL
• Official ball of NCAA Championship
SWNC12L \$80.95 doz



POLY

OPTIC YELLOW PRACTICE SOFTBALL
• Leather cover
• A large practice ball for travel teams
SCSB47NF 12" \$39.95 doz.
SCSB147YS 11" \$36.95 doz.



POLY

RAWLINGS OFFICIAL BALLS
ASA **sale price**
SRASAB 12" \$63.95 doz.
SRASAB 11" \$63.95 doz.
(reg. price \$68.95 doz) while supplies last.



CORK

WORTH DREAM SEAM GAME BALL
• ASA and NFHS
SWC12RYLA \$64.95 doz.
USSSA blue stitched poly ball (NOT SHOWN)
SWUSSA12 12" \$64.95 doz.
SWUSSA11 11" \$64.95 doz.



POLY

WILSON OFFICIAL HIGH SCHOOL YELLOW BALL
SW9011B \$67.95 doz.
SW9011PA \$67.95 doz.
(PIAA Stamped)
WILSON PONY BALL (NOT SHOWN)
SWPONY12 \$61.95 doz.
SWPONY11 \$61.95 doz.
WILSON LITTLE LEAGUE BALL (NOT SHOWN)
SWA9074 12" \$61.95 doz.
SWA9274 11" \$61.95 doz.

Longstreth has the BEST Ball Pricing on ALL Ball Purchases! Pricing is by the dozen. No Team or Coach Discounts Necessary.

TRAINING BALLS



WORTH NCAA TRAINING BALL
• Indoor/outdoor training
• Soft poly core
• Synthetic leather
SWNC12S 12" \$39.95 doz.
SWNC11S 11" \$39.95 doz.



EASTON SOFTSTITCH TRAINING BALL
• Great for indoor workouts
• Nylon cloth covered ball
• Authentic stitches
SEIB12 12" \$53.95 doz.
SEIB11 11" \$50.95 doz.



EASTON SOFTTOUCH TRAINING BALL
• Great for indoor workouts
• Synthetic leather cover
• Authentic stitches
SESB12 12" \$53.95 doz.
SESB11Y 11" \$50.95 doz.

MACHINE BALLS



JUGS LITE-FLITE PRACTICE BALLS
• Can be used indoors/outdoors
• Can be used with machine
SJLFB 12" \$24.95 doz.
SJB5010 11" \$24.95 doz.



DIMPLED PITCHING MACHINE BALL
• Great machine ball
• Provides true flight
SJDB 12" \$32.95 doz.
SJDB11 11" \$32.95 doz.



RED SEAMED DIMPLED MACHINE BALL
• Optic yellow with red inset seams
• Works in any pitching machine
SBPSBRSY 12" \$39.95 doz.

WIFFLE BALLS



WIFFLE BALLS
• Great practice balls

SJWB12 Softball 12" \$17.95 doz.
SJWB11 Softball 11" \$12.95 doz. (reg. price \$14.95)
SJWB9 Baseball 9" \$ 9.95 doz. (reg. price \$11.95)
SJWBG Y Yellow Golf Ball \$ 5.95 doz.
SJWBG W White Golf Ball \$ 3.00 doz. (reg. price \$5.95)

PACKAGE DEALS!

Package A 2 dozen practice balls!
Package B 2 dozen wiffle balls



PACKAGE A PRACTICE BALL
• Includes one 6-gallon bucket and lid / seat pad (SLBBS)
• 2 dozen yellow leather 12" practice balls (SCSB47NF)
SLBPB \$94.95

PACKAGE B WIFFLE BALL
• Includes one 6-gallon bucket and lid / seat pad (SLBBS)
• 2 dozen yellow, softball-size wiffle balls
SLWBP \$39.95

BALL BUCKET / BAGS



LOUISVILLE BALL BUCKET
• Holds up to 2 dozen 12" softballs
• Snap on lid and durable plastic
SLLSBUCKET \$19.95



EASTON BALL BAG
• Heavy duty 420 denier nylon
• Holds 18 softballs
• Circular zip top and adjustable shoulder strap
SEBB \$25.95



DIAMOND BUCKET SLEEVE
• Designed for 6 gallon bucket
• Padded seat top and adjustable shoulder strap
• Pockets for water bottle, cell phone, sunglasses, scorebook, line up cards pens, and game balls
SDBBS \$33.95



LONGSTRETH BALL BUCKET
• 6-gallon bucket with lid and removable foam pad
• Foam pad stores in bucket and can be used as a seat cushion
SLBBS \$19.95



NEW! BACK-SAVER BALL BASKET
• Lightweight and durable
• Use indoor or outdoor
• Holds up to 36 softballs
SJBBB \$69.95

BATTING GLOVES



PALMGARD STS™ BATTING GLOVES

Designed for the female athlete

- Dura-grip leather palm
- Jam protection
- Padding in the heel for protection against bat knob
- Sizes: S - XL, YS - YL

SPGSSKP Adult \$26.95

SPGSSYKP Youth \$26.95



DEMARINI SUPERLIGHT BATTING GLOVES

Designed for the female athlete

- One-piece leather palm
- Sting-stop finger and heel pads
- Molded low profile design
- Sizes: S - XL

SWTA6150

\$24.95



NEW! MIZUNO FINCH BATTING GLOVES

Designed for the female athlete

- Padded Mizuno Shockpalm
- Top quality leather palm
- Thumb flex bends as you grip the bat
- Colors: white/purple & black/optic yellow
- Sizes: S - XL

SMJFBG

\$19.95



EASTON TURBOSLOT III HITTING GLOVES

- Patented power pad technology for increased bat speed and power
- Automatically corrects the grip on the bat by placing it in the fingers instead of the palm
- Sizes: Men's S - XL, YS - YL

SETSHGII Adult \$29.95

SETSYPGII Youth \$27.95



EASTON TURBOSLOT III FASTPITCH ROLLOVER GLOVES

Designed for the female athlete

- Patented power pad technology for increased bat speed and power
- Automatically corrects the grip on the bat by placing it in the fingers instead of the palm
- Sizes: S - XL

SETSFG11

\$27.95



NEW! EASTON HF VRS BATTING GLOVES

Designed for the female athlete

- VRS pads reduce shock
- Color: white/black
- Sizes: S - L

SEHFVRS

\$19.95



NEW! EASTON SYNERGY II BATTING GLOVES

Designed for the female athlete

- Genuine leather with synthetic thumb for added durability with vented flex zones
- Color: blue/green/black
- Sizes: S - L

SEA121593

\$15.95

PLAYER ACCESSORIES



EVO SHIELD FEMALE RACERCHEST AND BACK GUARD

- Protection from direct chest and back impact
- Custom-molding inserts start soft and harden in minutes
- Size: Adult S - L; Youth YS - YL

SEA101A adult \$89.95

SEA100Y youth \$89.95



EVO SHIELD PLAYCALL WRIST GUARD

- Neoprene wrist sleeve
- Custom-molding protective shield

SEA156

\$29.95

BEST SELLER



ULTRA-LITE-Z-BLADE SUNGLASSES

- 100% UV protective, shatter resistant polycarbonate lenses
- Gray frame/smoke lenses

SEA162769

\$24.95



TUFF TOE

- Special adhesive glue
- Permanently bonds to shoe
- Colors: black or white
- Indicate right or left foot

STT

\$11.95



CRAMER ROSIN BAG SCRUB

\$4.95



WATER BOTTLE CARRIER

- 6 qt. vinyl coated carrier

H0602

\$9.95

PLASTIC SQUIRT BOTTLE

- Quart size

H0603

\$2.50

MOUTHGUARDS



MOGO FLAVORED MOUTHGUARD

- Flavors: mint, fruit punch, orange, lemon, bubble gum, or blue raspberry
- Sizes: adult or youth

HM18

\$11.95



SHOCK DOCTOR GEL MAX 6100

- Shock transfer core
- Not for use with braces
- Colors: pink, purple, orange, yellow, red, green, blue, black
- Sizes: adult or youth

HM12

\$9.95



COLORED VINYL MOUTHGUARD

- Colors: red, blue, green, gold, orange, pink, purple, maroon, navy, black, green
- Sizes: adult or junior

HM100C

\$1.25

\$1.00

DEFENSE FACE MASKS



RIP-IT DEFENSIVE FACE MASK

- Blackout technology designed to eliminate the glare that reflects off equipment
- Ultra light steel safety cell is designed to be either stiff or flexible depending on the force of impact
- Size: adult or youth

SRDGBO \$49.95
SRDGCHIN replacement chin cup \$4.95



Best Seller!

SCHUTT FIELDER'S GUARD

- Sleek design and ultra-lightweight allows great visibility and sightlines
- Fully adjustable straps
- Forehead pad is machine washable
- Stock color: black
- Special order colors: red, white, royal, pink

SS122150 Youth \$35.95
SS12100 Varsity \$35.95



GAME FACE MASK

- Made of ultra-lightweight and extremely strong polycarbonate (same material used in bullet-proof glass)
- High-impact, adjustable foam pads
- Large Clear (Adult fits head 22" and larger)
- Medium Clear (Youth fits head up to 21 7/8")

SGFSSM \$34.95

SLIDING PADS



MIZUNO MZO SLIDER KNEEPAD

- Cotton/polyester/spandex blend
- Inner 3/8" neoprene panels
- Stock color: black
- Adult one size

SM370108 \$9.95



TRACE SOFTBALL PAD

- Lycra spandex with 3/8" thick pad
- Cool Max lining
- Stock colors: black, white, royal, red
- Sizes: XS - XL

STSK Long \$9.95
STSKI Short \$9.95



SCHUTT EZ SLIDER II SLIDING PAD

- Quick Velcro™ for easy on and off
- Open back eliminates binding, increases player comfort and mobility
- Three-piece foam pad with moisture-wicking lining
- Stock color: black
- Sizes: S/M or L/XL

SSEZS2PL Long pad \$8.95
SSEZS2PS Short pad \$7.95

FIRST AID



SPORT CARE® JR. SOFT KIT

- Durable construction and handy compartments for easy access
- Dimensions: 16"L x 10"W x 9"H

MSCJ \$119.95

MUELLER BLISTER KIT

- Contains all the essentials to care for blisters, calluses, abrasions, and pressure/friction burns

MBK \$7.95



SHOULDER WRAP

- Safe, non-toxic
- Superior coverage
- Just put in freezer to get ready
- One size fits all



SDSWA Adult \$35.95
SDSW Youth \$35.95



MUELLER FIRST AID KIT

- Kit comes with basic supplies for taping, cold therapy, and wound care

MSFAK \$27.95

MUELLER INSTANT COLD PACKS

- Case of 16 instant cold packs
- 6" x 9" each

MCP \$24.95



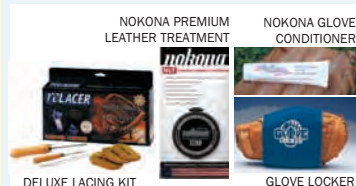
NEW! ARCTIC EASE

- Re-usable wraps that require no refrigeration
- Wraps are 4" wide by 5' long and can be cut to fit
- Colors: blue, black, pink

AECTW \$15.95



GLOVE ACCESSORIES



DELUXE LACING KIT

- Includes three 72" laces, leather punch, needle, steel lacing tool, & leather cutter
- Available in tan or black

SMDGLK \$20.95

NOKONA PREMIUM LEATHER TREATMENT

- Made with unique beeswax/propolis suspension lubrication

SNLTP \$9.95

NOKONA GLOVE CONDITIONER

- Renews and preserves leather

SNLT \$4.95

GLOVE LOCKER

- Made of stretchable neoprene
- Colors: royal or black

SGL \$9.95

PLAYER BAGS

Most bags can be embellished. Orders of 12 or more can be customized.

Call for details. 800-545-1329

BAT BACK PACKS

EASTON WALK-OFF II BAT PACK

- Large capacity backpack featuring an exclusive Bat Wing in-game gear holder
- Three "J" style fence/gear hooks, exterior helmet holder, zippered/separate cleat compartment, padded laptop sleeve, and Velcro glove zone
- Stock color: white, black
- Special order colors: royal, navy, red
- 20" high x 13" wide x 9" deep

		<u>1-11</u>	<u>12+</u>
SEWOBP	PLAIN	\$64.95	\$53.95



This bag can be customized! Orders of 12+. Call for details.

NEW! DEMARINI VOODOO BACKPACK

- Extra-large main compartment easily fits helmet with mask, a glove and extra equipment
- Holds 2 bats in side sleeves
- Stock color: black
- Special order colors: red, royal, navy
- 18" high x 15" wide x 14.5" deep

		<u>1-11</u>	<u>12+</u>
SWWOODB	PLAIN	\$49.95	\$40.95



This bag can be customized! Orders of 12+. Call for details.

NEW! LOUISVILLE STICK BACK PACK

- Front inverted cargo pocket
- Padded back and shoulder straps
- Holds 4 bats
- Stock colors: black, royal, navy, red, columbia blue, purple
- 19" high x 13" wide x 7" deep

		<u>1-11</u>	<u>12+</u>
SLSBP	PLAIN	\$49.95	\$40.95



This bag can be customized! Orders of 12+. Call for details.

MIZUNO ORGANIZER G3 BATPACK

- Convenient storage compartment for footwear
- Lightweight breathable shoulder straps
- Front utility pocket
- Drawstring sleeves hold 2 bats
- Stock colors: black/black, silver/black, royal/black, navy/black, red/black
- Special order colors: cardinal/black, forest green/black, purple/black, pink/black
- 20" high x 11" wide x 8" deep

		<u>1-11</u>	<u>12+</u>
SMORG3BP	PLAIN	\$44.95	\$35.95



This bag can be customized! Orders of 12+. Call for details.

NEW! WORTH BACK PACK

- Made from 600D Polyester and ripstop material
- 3 compartments and holds 2 bats
- Stock colors: black, navy, red, or royal
- 19" high x 15" wide x 8" deep

		<u>1-11</u>	<u>12</u>
SWBKPK2	PLAIN	\$34.95	\$29.9

Best Seller!



This bag can be customized! Orders of 12+. Call for details.

Customize!

Most bags are available in special team colors. Plus, our inhouse production department can embroidery or screen print team names, player names, or numbers on most models. Call our team representatives for more information! 800.545.1329

Call about Team Pricing!
800-545-1329



NEW! BENCH COACH R12X

- New design, same great function!
- Provides more flexibility to match roster sizes for 12 -16 players
- Comes with carry bag
- Color: black

SWBC12RX	\$234.00
-----------------	-----------------



SCHUTT HANGING HELMET BAG

- Made of heavy duty polyester material
- Holds 8 helmets in individual mesh pockets
- Available in black only

SSEBHHB	\$52.95
----------------	----------------



CARRY-ALL BAGS

This bag can be customized! Orders of 12+. Call for details.



NEW! EASTON E500W WHEELED BAG

- Heavy duty design with massive zippers
- Removable pocket for embellishment
- In-line wheels for excellent mobility
- Stock colors: black, royal, navy, red
- 36" long x 12" wide x 12" deep

SEE500W PLAIN 1-11
\$54.95 12+
\$44.95

This bag can be customized! Orders of 12+. Call for details.



DEMARINI VENETTA WHEELED BAG

- Extra-large main equipment compartment with vented shoe pocket
- Separate bat compartment holds up to 6 bats
- Reinforced pull handle; adjustable padded shoulder straps
- Rugged abrasion-resistant bottom
- Stock colors: black, navy, red, or royal
- Special order colors: dark green, maroon, orange, purple
- 37" long x 12" wide x 10" deep

SWTA9405 PLAIN 1-11
\$54.95 12+
\$44.95

This bag can be customized! Orders of 12+. Call for details.



NEW! LOUISVILLE RIG WHEELED PLAYER BAG

- Ventilated compartments
- Side pockets for storage
- Holds 4 bats
- Outside mount wheel base, oversized wheels
- Colors: black, royal, navy, red
- 36" long x 11.75" wide x 12" deep

SLWPB PLAIN 1-11
\$59.95 12+
\$48.95

This bag can be customized! Orders of 12+. Call for details.



ULTIMATE BAT BAG

- 600 denier nylon
- Extra heavy-duty zippers
- 2 metal hooks and straps
- 1-year warranty
- Has shoulder straps but no wheels
- Stock colors: black, navy, red, royal
- 36" long x 12" wide x 10" deep

SUBB PLAIN 1-11
\$59.95 12+
\$49.95

EQUIPMENT BAGS



Best Seller!

NEW! LOUISVILLE TON TEAM WHEELED GEAR BAG

- Oversized multi-purpose gear bag
- Rigid bottom with support rails
- Stock color: black
- 40" long x 16" wide x 16" deep

SLWGB \$49.95

SCHUTT EQUIPMENT BAG

- Durable heavy-duty fabric with a reinforced bottom
- Shoulder straps
- Available in black only
- 35" long x 25" wide x 19" deep

SSEB08 \$39.95



CHAMPION CANVAS EQUIPMENT BAG

- Great for youth or house programs
- 22 oz. canvas for durability
- Stock colors: black or olive drab
- 42" long x 24" wide

SCCB2441 \$24.95



TRAINING HITTING



Best Seller!



TOTAL CONTROL BATTING BALL

- Package includes 6 heavy sand-filled balls
- Designed to develop maximum strength and drive through the hitting zone
- Use for both front and side toss
- Weight approximately 425 grams
- Approximately 3.2" diameter

STCB 6-pack \$74.95

TOTAL CONTROL HOLE BALL

- The TCB "HOLE" Balls are a MUST HAVE for the serious fastpitch hitter
- Made from the same base material as the TCB Ball and GUARANTEED FOR 1 FULL YEAR
- Hits better, throws better than ordinary plastic balls
- Weighs approximately 80 grams
- Approximately 3.2" diameter

STCBH dozen \$49.95



JUGS 5-POINT HITTING TEE

- Teach inside-out swing mechanics
- Teach correct hitting fundamentals
- Easy to fold and carry

SJ5HT \$74.95



SCHUTT SWING-RITE TEE

- 48 different hitting locations
- Stems adjust for height
- Dual stems for hitting inside and outside pitch
- Folds into compact 21" x 26-7/8" x 2-1/2" size with handle

SSSRT \$172.95

Top Replacement Tube (not shown)

SSSRT-RT \$19.95

Top and Bottom Replacement Tube (not shown)

SSSRT-RBT \$79.95



HIT-A-WAY POWER ALLEY 360° TEE

- Full 360° rotating base simulates a wide range of inside, outside and strike zone pitches
- Full 14" of vertical adjustment

PPPA360 \$32.95



STRIKER II

- Easily attaches to chain link fence
- Use as a warm-up device
- Unique wear indicator feature, visual alert to replace tether
- Baseball only

STRIK1 \$76.95

Replacement Ball

STRIKR \$28.95

Don't See What You Need?

Call us, we'd be happy to help you find it!

800.545.1329

SKLZ SOFTBALL TARGET SWING TRAINER

- Ideal for warmup swing
- Comfort grip handle
- 58" long, for all ages

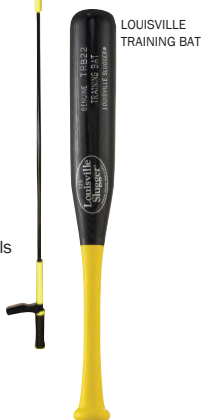
SMTST \$43.95

LOUISVILLE TRAINING BAT

- 22" training bat
- Excellent for one-hand swing drills

SLTRB22Y \$39.95

SKLZ SOFTBALL TARGET SWING TRAINER



LOUISVILLE TRAINING BAT

TEE STACKER

- If you swing cleanly through the top ball, the Stacker slides off, and the next ball is ready to hit

SGTTT \$14.95

PERFECT STRIDE

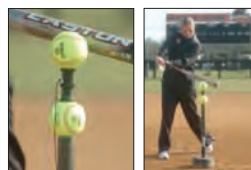
- Solves problems with overstriding, lunging and stepping out on pitches

SIPS \$14.95

SOFTBALL TEE TOPPER

- Increases the life of your tee
- Can be used with most tees

SSSBTT \$9.95





Best Seller!

BATTING TEE

- Adjustable from 24" to 36"
- Weighted home plate rubber base

SSBT \$20.95

Replacement Tube (not shown)

SMBT R \$7.95



Best Seller!

SCHUTT ULTIMATE TRAVEL TEE

- Light weight, portable hitting tool
- Telescoping tee to adjust the height of the tee
- Folding base fits into a convenient, water-resistant carrying bag (included)

SS12830615 \$29.95



JUGS PITCHING MACHINE

- 15-60 mph
- Realistic underhand delivery
- Dial-A-Speed
- 360 degree swivel design for flys and ground balls

SJPM \$1,279.95 (+S/H)

SUPER JUGS PITCHING MACHINE

- 20-70 mph, digital mph display
- 360 degree swivel design for flys and ground balls

SJPM1 \$1,574.95 (+S/H)

JUGS SOFTBALL TRANSPORT CART

SJMC \$194.95 (+S/H)

Can be used with both JUGS and Super JUGS pitching machines!



LITE-FLITE MACHINE

- Throws Lite-Flite and poly balls
- Swivel base allows for 360 degree movement
- Throws all types of pitches, as well as fly balls, ground balls and pop-ups
- Easy to carry - weighs only 35 lbs.
- Electric power source needed

SJLFM \$414.95 (+S/H)



SMALL BALL PITCHING MACHINE

PACKAGE

PACKAGE INCLUDES: Small Ball Pitching Machine, Small Ball Instant Protective Screen, Hitting Stick, 4 Dozen Small Balls (1 BUCKET), Throw-Down Home Plate, and a FREE Drill Book

Package Price

SJA0060 \$284.95 (+S/H)

Machine Only

SJA0065 \$209.95 (+S/H)



JUGS HITTING STICK

- 30 inches long
- Weighs 16 oz.

SJA1010 \$19.95

SMALL BALL

- Polyurethane foam SMALL ball
- 5" circumference 0.5 oz.

SJB5132 (yellow) \$11.95 dz.

SMALL BALL BUCKET

- Includes carry bucket and 4 doz. balls
- Available yellow or white

SJB5135 \$44.95

(White on sale \$30 while supplies last)

SMALL BALL INSTANT PROTECTIVE SCREEN

- Portable and folds down compact
- No assembly required

SJS0200 \$54.95



CRUSHER

- Great, inexpensive training tool
- Improves hand-eye coordination
- Unit comes with 1 dozen Mini-Lite balls
- 15 - 45 mph pitch speed
- A/C power

STCR99 \$94.95 (+S/H)

CRUSHER MINI-LITE BALL

- Size of a golf ball
- Set contains 2 dozen balls



STCR15 \$14.95



JUGS TOSS MACHINE

- Holds 10 softballs
- Internal rechargeable battery
- Runs for up to 8 hours
- Weighs just 13 lbs.

SJTM \$209.95 (+S/H)

TRAINING FIELDING / THROWING

WORTH REACTION BALL

- 12" ball bounces erratically
- Improves hand eye coordination and reaction skills

SW5REAC \$9.95



REFLEX Z-BALL

- Unpredictable bounce when dropped to the ground

MZBALL1 \$6.95



SOFTHANDS

- Reinforces the use of two hands
- Appropriate for all levels of play

SSH1 \$12.95



PRACTICE GLOVE

- Reinforces the use of two hands
- Available for right or left hand

SPTG \$34.95



THROW MAX

- Will not allow the elbow to bend beyond 90 degrees
- Available for right or left arm
- Sizes: XS - L

STM \$39.95



EDUCATIONAL MATERIALS

HITTING

MEGA SOFTBALL DRILLS: HITTING

2-DISC SET with John Tschida
SV26 DVD \$119.99

NEW! THE SHORT GAME ENCYCLOPEDIA

with Tim Walton
SV33 DVD \$39.99

DEVELOPING A POWER HITTER

with Tim Walton
SV27 DVD \$39.99

HITTING DRILLS with Mike Candrea

SVA17 DVD \$34.99

FIELDING & THROWING

NEW! FLIPS, FEEDS AND FUNDAMENTALS

with Lonni Alameda
SV30 DVD \$39.99

NEW! COMPLETE INFIELD MECHANICS

FOR SOFTBALL with Ehren Earleywine
SV31 DVD \$39.99

ADVANCED TEAM DEFENSE DRILLS

FOR SOFTBALL with Patty Gasso
SV24 DVD \$39.99

INFIELD AND OUTFIELD SKILLS & DRILLS

with Tim Walton
SV25 DVD \$39.99

PITCHING

THE PITCHER'S EDGE:

PREPARING TO WIN with Lisa Fernandez
SV22 DVD \$39.99

THE COMPLETE PITCHING

WORKOUT with Jennifer Rocha
SV23 DVD \$39.99

NEW! COACHING THE INTERMEDIATE

YOUTH PITCHER with Jenny Allard
SV32 DVD \$29.99

LEARNING TO PITCH II

by Jim Webb
SB31 BOOK SALE \$15.95
(reg. price \$19.95) while supplies last.

COACHING

ALL ACCESS FLORIDA SOFTBALL PRACTICE

6-DISC SET with Tim Walton
SV29 DVD \$119.99

MAXIMIZING INDOOR SOFTBALL PRACTICE

by Patty Gasso
SVC13DVD DVD \$39.99

PATTY GASSO: HOW TO COACH

THE FEMALE ATHLETE
SV28 DVD \$29.99

NEW! HIGH-SCORING SOFTBALL

by Ralph and Karen Weekly
SB34 BOOK \$14.95

Books by Jeff Janssen, M.S.

CHAMPIONSHIP TEAM BUILDING
SB19 BOOK \$29.95

THE TEAM CAPTAIN'S LEADERSHIP MANUAL
SB28 BOOK \$29.95

PEAK PERFORMANCE PLAYBOOK
SB23 BOOK \$24.95

WINNING SOFTBALL DRILLS

by Dianne Baker and Sandra Cole
SB06 BOOK \$19.99

COACH DECK SOFTBALL TRAINING

CARDS WITH 52 DRILLS
SCDSB TRAINING CARDS \$19.95

RULE BOOKS

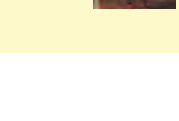
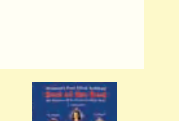
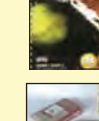
BLUE BOOK 60 - 2013 FASTPITCH
SOFTBALL ESSENTIAL RULE
REFERENCES
SXBBFP13 \$19.95

FEDERATION H.S. SOFTBALL RULE BOOK
SRB \$10.95

BOOKS FOR ATHLETES

WOMEN'S FAST PITCH SOFTBALL
BEST OF THE BEST BOOK
by Bill Plummer and Steve Clarfield
SB32 BOOK \$16.95

"THROW LIKE A GIRL" by Jennie Finch
SB30 BOOK \$14.95



Descriptions and video previews
are available on
www.longstreth.com

TRAINING PITCHING



Best Seller!

STRIKE ZONE HOME PLATE

- Great visual aid for teaching command of strike zone
- Enhances pitcher's/catcher's command of framing pitches

SSSZP \$14.95



Best Seller!

CANNONBALL

- Slightly smaller than a softball
- Weighs 16 oz.
- Great tool to strengthen muscle groups in the forearm and shoulder
- Not recommended for distance throwing

SMCB \$19.95



Best Seller!

SPINNER

- Helps train pitchers on their release and rotation for the alternate pitches
- Exact diameter and weight of a softball
- Has realistic seams molded into the edge for proper grip

SCKS \$24.95



SET OF 3 WORTH TRAINING BALLS

- Great pitcher's training aid
- 5-1/2 oz., 6-1/2 oz., 8-1/2 oz.
- 3 balls to set

SWTB2 \$28.95



SOFTBALL RADAR BALL

- Regulation size and weight softball
- Measure speed from 40, 43, or 46 feet
- When caught, LCD displays speed

SMRB 12" \$27.95



WORTH 14" BALL

- 14" oversized ball builds hand strength to improve spin and control of pitching

SW514TB \$9.95



SCHUTT NO ZONE

- Helps pitchers visualize the strike zone
- Adjustable tee heights
- 17" wide bar with interchangeable indicators for customizable workouts
- Indicators bend easily giving instant feedback

SSNZPT \$46.95



CLOSE UP VIEW



SCHUTT PITCHER'S LANE

- Struggling to land in the pitcher's lane or keeping your back foot on the ground?
- The 8-foot yellow stride zone strips simulate the chalked pitcher's lane
- The rubber makes it easy to feel if you are in contact with the ground

SSPL \$31.95



Make Pitching Practice Exciting!

RADAR PITCHING TRAINER

- Combines a pitching target, radar, virtual umpire, statistician and simulator
- Accurately calculates pitch speed from pitcher's release
- Virtual electronic umpire calls balls, strikes, outs, and walks (simulates a 1/2 inning)
- Software records total pitch count, cumulative strikes, balls, outs and walks
- Heavy duty 16 gauge steel frame

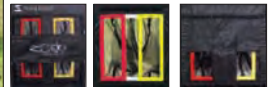
SRPT \$414.95 (+S/H)



PITCHING ESSENTIALS ZONE IN

- Excellent tool for pitchers to master a strong command of the strike zone
- Great training aid for throwing to bases

SPEZI \$199.95 (+S/H)



BUSHNELL RADAR GUN

- Point and shoot operation
- Large, clear LCD display
- Displays fastest speed once trigger is released

SMBU101911 \$152.95

Don't See What You Need?

Call us, we'd be happy to help you find it!
800.545.1329

COACH'S AIDS

COACHING BOARDS



MAGNETIC COACHING BOARD *Best Seller!*

- 8½" x 14"
- One magnetic/diagramming side
- One note/diagramming side

SC700 **\$21.95**



ALUMINUM PORTFOLIO

- 13-3/4" L x 9-3/16" W x 3/8" D
- Covered hinge with clipboard clamp
- Wipes clean with damp cloth
- Includes marking pen

SSC **\$19.95**



SPORT WRITE PRO DIAMOND BOARD

- 16.5" x 12.5"
- Light weight dry erase board with marker

S044P **\$27.95**

EXTRA MAGNETIC TABS

(not shown)

- Set of 15 (size: 1/2" x 1½")

SCM4 **\$5.95**

GLOVER SCOREBOOKS

GLOVER'S 50 SHEETS REFILL

- Scoresheets only (not shown)

SGS50 **\$14.95**

GLOVER'S SCOREBOOK SCORING SHEETS

- 30 game sheets
- Holds 10 players' names
- Stat sheets/pitching and hitting
- Includes line-up sheets, stat sheets

SGSBF **\$14.95**

GLOVER'S SCOREBOOK BINDER

- Binder 15½" x 13"
- Large exterior w/clip for writing surface and inside pockets and pencil holder

SGSB **\$22.95**

GLOVER'S PITCHING / HITTING SCOUTING CHARTS

- 11" x 14-1/2"
- 30 charts per pack
- Will fit in standard Glover's Binder

SGSC **\$11.95**

GLOVER PACKAGE

- Includes: Scoring Sheets SGSBF, Binder SGSB, and bag SGSBB
- Save \$8 by purchasing the package

SGSBPKG **\$59.95**

GLOVER'S SCOREBOOK BAG

- 18" L x 14" H
- Water resistant and durable
- Stock colors: black, navy, royal, red

SGSBB **\$29.95**

Save \$8 on Package!

LINE UP CARDS



LONGSTRETH 4-PART LINE-UP CARDS

- 25 games per pack
- Room for 16 players
- Protected in flexible plastic cover

SSRLCP **\$9.95**

SSRLCR 25 GAME REFILL **\$5.95**



GLOVER'S LINE UP CARDS

- Super size 5 ½" x 8 ½"
- Four part carbonless
- 35 cards per pack

SGLC **\$9.95**

SGLH LINE-UP CARD HOLDER **\$14.95**

SCOREBOOKS



PLAYER SCOREBOOK

- 15 player deluxe scorebook
- Scores 25 games
- Includes batting average charts, roster and line up pages

SCSC1 **\$4.95**

PETERSON SCOREBOOK

- Holds 11 players' names
- 25 games per book

SRPS **\$4.95**

PITCH COUNTER

SMPPC **\$8.95**



TRAINING SPEED / AGILITY



NEW! FLAT RECTANGLE MARKERS

- Heavy-duty flexible rubber
- 12 markers per set - 4 each red, blue, yellow
- 20" L x 2 ¾" W

KG16A2301 **\$37.95**



SPEED HURDLE SET

- Set of 6 colors
- 6" speed hurdles

CSPH66SET **\$54.95**



SPEED CHUTE

- Improves sprint speed, explosiveness, acceleration, and lower body strength
- Adjustable waistband with quick-release strap

CSSPCHT **\$60.95**



SPEED LADDER

- Great for improving agility and speed
- Ladder is 20' L x 20" W with 12 slots
- Comes with storage handle and nylon carry bag

CSAGLXX **\$39.95**

SCREENS/NETS



BOW NET BIG MOUTH NET

- 7' H x 7' W
- Heavy duty netting
- Great for pre-game warm ups and practice
- Easy set up ... sets up in 90 seconds!

SBBMNET \$149.95 (+S/H)

Best Seller!



BOW NET SOFT TOSS SOFTBALL NET

- 7' H x 7' W
- Heavy duty netting
- Great for pre-game warm ups and practice
- Easy set up ... sets up in 90 seconds!

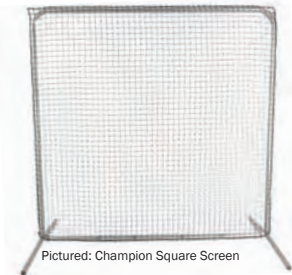
SBBNET \$139.95 (+S/H)



JUGS INSTANT SCREEN

- 7' H x 8' W
- Folds down to compact 36" circle and weighs less than 14 lbs.
- Fits in car trunk

SJIS \$139.95 (+S/H)



Pictured: Champion Square Screen

SQUARE SCREENS

- 1.5" steel tube frame (Jugs: 1.375" tubing)
- Heavy duty netting

JUGS QUICK-SNAP SQUARE SCREEN

- 6 1/2' H x 6' W

SJSN \$239.95 (+S/H)

NEW! CHAMPION SQUARE SCREEN

- 80" H x 80" W

SCNB8181 \$114.95 (+S/H)

NEW! CHAMPRO SQUARE SCREEN

- 7' H x 7' W

SCNB175 \$104.95 (+S/H)



Pictured: Champion Pitching Screen

PITCHING SCREENS

- 1.5" steel tube frame (Jugs: 1.375" tubing)
- Heavy duty netting
- Pitcher protection

JUGS QUICK-SNAP PITCHING SCREEN

- 6 H x 6 1/2' W with 20" W X 33" H opening

SJPS \$239.95 (+S/H)

NEW! CHAMPION PITCHING SCREEN

- 80" W x 80" H

SCNB8080 \$119.95 (+S/H)



Pictured: Champion Sock Screen

SOCK NETS

- 1.5" steel tube frame (Jugs: 1.375" tubing)
- Heavy duty netting
- 54" sock net

JUGS QUICK-SNAP SCREEN SOCK

- 7' H x 7' W with 48" X 60" sock

SJSNS \$274.95 (+S/H)

NEW! CHAMPION SOCK STYLE SCREEN

- 80" W x 80" H with 54" sock

SCNB8054 \$149.95 (+S/H)

NEW! CHAMPRO SOCK STYLE SCREEN

- 7' H x 7' W with 54" sock

SCNB177 \$129.95 (+S/H)

Square, Pitching, and Sock Screens are Special Order Only!



CHAMPRO FIELD SCREEN WHEEL KIT

- Attach to all Champro field screens!

SCNBFW \$37.95

Square, Pitching, and Sock Screens are Special Order Only!



ELITE MEDICINE BALLS

- Textured surface and design ensures superior grip and handling
- Hollow synthetic rubber construction

CSPRM2 2 lb. \$20.95
CSPRM4 4 lb. \$28.95
CSPRM6 6 lb. \$39.95
CSPRM8 8 lb. \$48.95
CSPRM10 10 lb. \$56.95



SPEED RING SET

- Great for a variety of agility exercises
- Includes 4 red, yellow, and blue 16" diameter PVC rings

CSSRG12 \$24.95



DOME CONE SET

- Each set contains 36 cones in 6 colors
- Storage pole included

HO100 \$39.95

FIELD MARKER CONES

- 9" durable plastic cones
- Color: orange



HO90 \$1.15 ea.



DISC CONE CARRIER

- Will hold up to 150 disc cones

4MKWI \$4.95

DISC CONES

- Colors: yellow, orange

4MKWH \$0.89 ea.

BASES / FIELD



OFFICIAL PITCHING RUBBER WITH SPIKES

- Great for moving between 40' and 43'
- Two removable side spikes

SCR81 \$19.95



OFFICIAL PITCHING RUBBER

- Size: 24" x 6"
- 3 removable spikes

SSPR \$14.95

Best Seller!



*NON-SLIP BACKING
MAKES THIS
PERFECT FOR
INDOOR TRAINING*

INDOOR PITCHING RUBBER

- Regulation size 24" L x 6" W
- Non-slip backing, portable pitching rubber for indoor pitching
- One-year warranty

SIPR \$47.95



OFFICIAL SIZE HOME PLATE

- Heavy-duty molded white rubber
- Black beveled edges
- 5 removable spikes

SSHP \$29.95



OFFICIAL 15" HOLLYWOOD BASE SET

- Set of 3 bases
- 3 metal ground receptacles
- Vinyl-covered with mold-quilt design
- Size: 15" x 15" x 3"

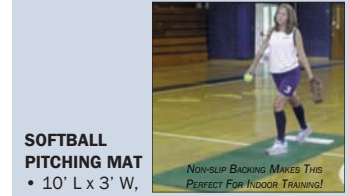
SMHB \$164.95



IMPACT DOUBLE 1ST BASE

- Standard impact base
- Size: 30" x 15" x 2 1/2"

SSDIB \$179.95

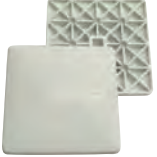


*NON-SLIP BACKING MAKES THIS
PERFECT FOR INDOOR TRAINING!*

SOFTBALL PITCHING MAT

- 10' L x 3' W, weighs 20 lbs.
- Ideal for indoor pitching
- Eliminates gym floor scuffing
- Non-slip, real turf and regulation size attached rubber
- One-year warranty

SPPM \$199.95 (+S/H)



INDOOR HOLLYWOOD BASE

- Great base for indoor use, and can be used outside as well
- Heavy duty molded rubber construction without stanchions
- Size: 15" x 15" x 2 1/2"

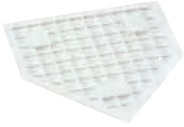
SSIHBS Set of 3 \$119.95



VINYL DOUBLE 1ST BASE

- Heavy-duty, quilted vinyl cover
- 3 nylon web straps
- 3 steel anchors
- Size: 30" x 15" x 3"

SSCDB \$29.95



WAFFLE BOTTOM HOME PLATE

- Official size
- Non-skid waffle bottom

SC96 \$10.95

WAFFLE BASE

- Official size
- Non-skid waffle bottom

SC93 \$9.95

SET OF THREE WAFFLE BASES AND HOME PLATE

SC93-96 Save \$7 \$33.95



SET INDOOR/OUTDOOR THROW DOWN BASES

- Orange

SC98 \$8.95

SET INDOOR/OUTDOOR THROW DOWN BASES INCLUDING PITCHING RUBBER

- White

SSIB08 \$9.95

SLIDE-RITE

- 12' L x 42" W
- Durable cordura with open-cell foam cushion inside
- Sliding sheet made of canvas
- Portable and easy to move

SSR \$299.95 (+S/H)



BASE ACCESSORIES



BASE PLUG

- Easily removable rubber plug keeps dirt out

SRBP1 \$3.95



BASE PLUG WITH STEM

- Molded rubber base plug that fits all conventional systems

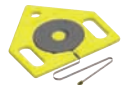
SCWAP \$5.95



DIG OUT TOOL

- Tempered steel with a wooden handle

SRDT \$4.95



MEASURING PLATE

- Stepping off distances during warm up and practice
- Lightweight, rugged and portable

SAKHMP \$39.95

FOOTWEAR

MIZUNO



TEAM COLORS AVAILABLE

MIZUNO 9-SPIKE SWEEP METAL

- Top quality Dynamic Synthetic leather with Drag Guard
- 9-spike configuration specifically designed for fastpitch
- Stock color: black
- Team colors available by special order
- Sizes: Women's 6 - 11 w/ ½ sizes
- Weight: 9.8 oz.

9CMS13 1-11 \$99.95 12+ \$86.95



NEW! MIZUNO 9-SPIKE SELECT METAL

- Lightweight, performance spike for the athlete who seeks control, comfort, and cushioning
- Color: black/white
- Sizes: Women's 6 - 11 w/ ½ sizes
- Weight: 11.25 oz.

9SMSS 1-11 \$74.95 12+ \$67.95



TEAM COLORS AVAILABLE

NEW! MIZUNO 9-SPIKE FINCH ELITE SWITCH CLEAT

- Lightweight, performance molded cleat for the elite athlete
- Stock color: black
- Team colors available by special order
- Sizes: Women's 6 - 11 w/ ½ sizes
- Weight: 9.8 oz.

9CMSFES 1-11 \$74.95 12+ \$67.95



NEW! MIZUNO 9-SPIKE FINCH FRANCHISE 5 CLEAT

- Jennie Finch's signature model with superior support and cushioning
- Color: black/pink
- Sizes: Women's 6 - 11 w/ ½ sizes
- Weight: 9.75 oz.

9CMSFF5 1-11 \$44.95 12+ \$39.95

NIKE



NIKE UNIFY STRIKE METAL

- Low-cut synthetic leather upper with toe protection
- TPU plate with a nine-cleat configuration
- Color: black/white
- Sizes: Women's 6 - 11 w/ ½ sizes
- Weight: 12 oz.

9SNUSM 1-11 \$59.95 12+ \$54.95



NIKE WOMEN'S UNIFY STRIKE MCS CLEAT

- Low-cut synthetic leather upper
- Molded TPU outsole with twelve cleats
- Color: black/white
- Sizes: Women's 5.5 - 11 w/ ½ sizes
- Weight: 9.6 oz.

9CNUMCS13 1-11 \$49.95 12+ \$45.95

UNDER ARMOUR



UNDER ARMOUR GLYDE STEEL

- Synthetic upper and abrasive resistant toe piece
- Colored laces included with every pair - black, red, royal, bitter, tropic pink, jade river
- Color: black/white
- Sizes: Women's 5.5 - 11 w/ ½ sizes
- Weight: 10.3 oz.

9SUAG13 1-11 \$64.95 12+ \$59.95

ACCESSORIES

MUELLER STENCH EQUIPMENT SPRAY

- 10 ounce can
- Eliminates smell from shoes and equipment

MSAS **\$11.95**

MUELLER BLISTER KIT

- Contains all the essentials to care for blisters, calluses, abrasions, and pressure/friction burns

MBK **\$7.95**



Please try on shoes indoors to check for fit and sizing. Do not wear outside. When returning shoes, they must be in new condition with original, unmarked box. If box is damaged, marked, or taped there will be a 15% restocking fee.



LONGSTRETH CAN OUTFIT ANY TEAM FROM HEAD TO TOE

These pages feature our best selling uniforms and apparel as well as new and exciting products. For our full selection visit our website or call one of our knowledgeable team reps.

Don't forget to ask about our fundraising programs and volume discounts!

LONGSTRETH CARRIES ALL THE TOP BRANDS TO FIT ANY BUDGET!

800-545-1328 **WWW.LONGSTRETH.COM**

*Note: most jerseys are available in standard team colors. We reference this symbol throughout the catalog and list additional colors in the item's description.

Visit our website or call our team reps for a complete listing.



LONGSTRETH UNIFORMS



AVAILABLE IN YOUTH SIZES

CUSTOM SLEEVELESS HOMERUN JERSEY

- 100% lightweight microweave polyester
- Additional colors: white, orange, maroon, purple, gray
- Sizes: Ladies S - 2XL, Youth L

LSGHOMJ 12+ plain \$25.95
(reg. retail price \$36)



AVAILABLE IN YOUTH SIZES

CUSTOM SLEEVELESS GRAND SLAM JERSEY

- 100% polyester warp knit
- Available with or without piping
- Additional colors: white, blue gray, orange, cardinal, maroon, purple, dark gray
- Sizes: Ladies S - 2XL, Youth L

LSGGDSJ 12+ plain \$25.95
(reg. retail price \$36)



AVAILABLE IN YOUTH SIZES

HAMILTON RACERBACK JERSEY

- 100% lightweight microweave
- Additional colors: gold, maroon, orange, columbia blue, silver, or white
- Sizes: Ladies S - 2XL, Youth L

LSGHAM 12+ plain \$19.95
(reg. retail price \$25)



AVAILABLE IN YOUTH SIZES

ST. GEORGE 2 JERSEY

- 100% lightweight microweave polyester
- Additional colors: gold, purple, maroon, orange, columbia blue, silver, or white
- Sizes: Ladies S - 2XL, Youth L

LSGSTG2 12+ plain \$17.95
(reg. retail price \$23)

HOMERUN LOW RISE PANT

- 100% pro weight polyester knit
- Two back welt pockets, mid calf length
- Colors: white, gray, black
- Sizes: Ladies S - 2XL, Youth L

LSGHOMP 12+ plain \$21.95
(reg. retail price \$36)

CUSTOM GRAND SLAM LOW RISE PANT

- 100% pro weight polyester knit
- Two back welt pockets, mid calf length
- Colors: white, black, blue gray, orange, cardinal, dark green, maroon, navy, purple, royal, dark gray, scarlet
- Sizes: Ladies S - 2XL, Youth L

LSGGDSP 12+ plain \$28.95
(reg. retail price \$46)

PEMBROKE SHORT

- 100% lightweight microweave polyester
- 5" inseam
- Colors: black, white, royal, navy, dark green, maroon, or red
- Sizes: Ladies S - 2XL, Youth L

LSGPBM 12+ plain \$15.95
(reg. retail price \$20)

SOUTHAMPTON SHORT

- 100% lightweight microweave polyester
- 5" inseam
- Colors: black, white, royal, purple, navy, dark green, maroon, or red
- Sizes: Ladies S - 2XL, Youth L

LSGSOU 12+ plain \$13.95
(reg. retail price \$18)

Panels & Piping Colors: black, gold, dark green, maroon, navy, orange, red, columbia blue, royal, silver, or white

* Panels can be imprinted for additional charge



UNIFORM PACKAGES

The HIGH 5 Package (1A)

\$32 SAVE \$5

- High Five Fever Jersey with basic embellishment (team name and player number on back)
- High Five Fever Short
- One pair Team Socks

SBUPKG1A

Sizes: Adult S - 2XL
Youth YS - YL
* add \$2 for 2XL



12 package minimum
Call for volume discounts



The UNDER ARMOUR Package (4)

\$50 SAVE \$8

- Under Armour Recruit Jersey with basic embellishment (team name and player number on back)
- Under Armour Heater Softball Pant
- One pair HeatGear Team Socks

SBUPKG4

Sizes: Jersey: Ladies XS - 2XL
Pant: Ladies 2XS - 2XL

See page 35 for colors
12 package minimum



Add an Embellished Visor for \$8 or a Belt for \$4.50!

**CHOOSE FROM THESE VALUE PRICED PACKAGES OR BUILD YOUR OWN.
CALL OUR TEAM REPS FOR MORE INFORMATION 800.545.1329**

NIKE UNIFORMS



NEW! NIKE TURNTWO JERSEY

- 100% polyester stretch
- Additional colors: gray/white, gray/gray, white/white, white/black, purple/white, cardinal/white
- Sizes: Ladies XS - 3XL

N578469 12+ plain \$34.95
(reg. retail price \$50) Available 12/1/13

NEW! NIKE TURNTWO ¾ PANT

- 100% Dri-FIT® polyester warp knit
- Two back pockets
- Colors: black/white, gray/white, white/white, navy/white, scarlet/white
- Sizes: Ladies XS - 3XL

N578471 12+ plain \$32.95
(reg. retail price \$45) Available 12/1/13

NEW! NIKE TURNTWO SHORT

N578470 12+ plain \$24.95
(reg. retail price \$35) Available 12/1/13



NIKE FAST PITCH GAME TOP

- 100% Dri-Fit® polyester
- Additional colors (all with contrast blue/gray stitching and side inserts): blue gray, white, purple, cardinal, dark maroon
- Sizes: Ladies XS - 2XL

N519565 12+ plain \$24.95
(reg. retail price \$35) End date 12/2015
* Jersey not available in dark green

SHOWN WITH NIKE ALL OUT ¾ PANT (N553208)



NIKE FULL BUTTON SHORT SLEEVE JERSEY

- Poly warp knit
- Contrast knit mesh under arms
- Additional colors (all with white trim): cardinal, blue gray, white, dark maroon, purple
- Sizes: Ladies XS - 2XL

N453380 12+ plain \$34.95
(reg. retail price \$50) End date 12/2014

NIKE ALL OUT ¾ PANT

- Poly warp knit
- Two back welt pockets
- Colors: black, navy, blue gray, scarlet, or white
- Sizes: Ladies S - 2XL

N553208 12+ plain \$34.95
(reg. retail price \$50) End date 12/2014



NIKE RESPECT SLEEVELESS JERSEY

- 100% polyester, mesh knit
- Sizes: Ladies XS - 2XL, Youth XS - XL

Sleeveless N519544 12+ plain \$24.95

Short Sleeve N519543 12+ plain \$26.95

(reg. retail price \$32/\$35)

NIKE RESPECT SHORT

- 5" inseam
- Sizes: Ladies XS - 2XL, Youth XS - XL

N519545 12+ plain \$18.95

(reg. retail price \$25)
Additional colors for jersey and short (all with white trim): white, purple, cardinal, dark maroon

NIKE SUBLIMATED AND CUSTOM UNIFORMS AVAILABLE CALL FOR DETAILS.



12 piece team pricing shown for plain goods. Please call for embellishment quote and/or volume discount for larger orders.



UNDER ARMOUR SUBLIMATED UNIFORMS

AVAILABLE DESIGNS



VARSITY

FORCE

ATTACK

FRANCHISE

ELITE

DYNASTY

VICTORY

SPEED

NEW! UNDER ARMOUR ARMOURFUSE UNIFORMS

- Button Front styles-100% polyester or 91% polyester/ 9% elastane mesh
- Pullover styles-90% polyester/10% spandex
- Wear with new Heater Pant (page 35) or matching shorts
- Choose design, colors, team name and numbers
- **Embellishment included in price (player names additional charge)**
- **Allow up to 8 weeks for delivery upon art approval**
- Sizes: Ladies XS-2XL (add \$4 for 3XL)

UAUJSJKNW Knit Button Front Jersey	12+	\$76.95 (reg. retail price \$115)
UAUJSJMHV Mesh Button Front Jersey	12+	\$76.95 (reg. retail price \$115)
UAUJWMMW Short Sleeve Jersey	12+	\$56.95 (reg. retail price \$85)
UAUJWMMW Racerback Jersey	12+	\$53.95 (reg. retail price \$80)
UAUJS5MMW 5" Short	12+	\$49.95 (reg. retail price \$70)

Call for volume discount pricing on larger orders

Go to Uniform Builder at

www.underarmourteamuniforms.com/configurator



NEW! PHANTOM

NEW! KNIT JERSEY

NEW! DYNAMITE

(SHOWN WITH RBI LOW RISE PANT / BELT NOT INCLUDED)

UNDER ARMOUR UNIFORMS



UNDER ARMOUR RBI SHORT SLEEVE HENLEY JERSEY

- 100% polyester pin dot mesh
- 2 button placket
- Additional colors (all with white insets): maroon, purple, or white
- Sizes: Ladies XS - 2XL

UAUSJ116W 12+ plain \$32.95
(reg. retail price \$50) End date 5/2015

SHOWN WITH UNDER ARMOUR RBI LOW-RISE PANT (UAUSP512W)



NEW! UNDER ARMOUR RECRUIT SLEEVELESS JERSEY & SHORT

- 100% polyester lightweight fabric
- White diamond shaped contrast at side panel
- Additional colors (all trimmed in white): white, graphite, maroon, carolina blue, purple, pink
- Sizes: Ladies XS - 2XL

Sleeveless Jersey UA1239022 12+ plain \$22.95

5" Short UA1239023 12+ plain \$22.95
(reg. retail price \$30/\$30)



NEW! UNDER ARMOUR CHANGE UP HENLEY

- 100% textured flat back mesh
- Two button henley
- Additional colors: white, maroon, graphite
- Sizes: Ladies XS - 2XL

UAUSJ117W 12+ plain \$26.95
(reg. retail price \$40) Available 10/25/13

UNDER ARMOUR RBI LOW-RISE PANT

- 100% polyester
- Decorative braid available for additional charge
- Colors: white, gray, black, navy, scarlet, royal
- Sizes: Ladies XS - 2XL

UAUSP512W 12+ plain \$30.95
(reg. retail price \$53)
Last ship date Spring 2014



NEW! UNDER ARMOUR HEATER PANT

- 100% polyester
- Two back pockets
- Colors: black, white, gray
- Sizes: Ladies 2XS - 2XL

UA1242352 12+ plain \$21.95
(reg. retail price \$30)

SHOWN WITH UNDER ARMOUR LOCKER TEE (UAU123719) PAGE 40



12 piece team pricing shown for plain goods. Please call for embellishment quote and/or volume discount for larger orders.



DYNAMIC SUBLIMATED UNIFORMS



DYNAMIC SUBLIMATED DESIGNS

- Pick design, fabric, body, colors-many styles to choose from
- Team name and numbers included (player names are additional cost)
- 12 piece minimum, no minimum on fill ins
- **Allow 6 weeks for delivery upon art approval, additional time at peak season**
- Sizes: Ladies XS - 3XL, Youth M - XL

Sleeveless or short sleeve button front jersey	12+	\$58.95	(reg. retail price \$92)
Sublimated Pants	12+	\$71.95	(reg. retail price \$113)
Elite Sublimated Jerseys	12+	\$62.95	(reg. retail price \$82)
Elite Sublimated Shorts	12+	\$40.95	(reg. retail price \$54)
Matador Jersey	12+	\$58.95	(reg. retail price \$82)
Avalon Short	12+	\$33.95	(reg. retail price \$54)



MADADOR JERSEY / AVALON SHORT



500-4



600-8



NATIONAL



RUSSELL UNIFORMS



BELT NOT INCLUDED



BACK

RUSSELL FAUX PLACKET PULLOVER JERSEY

- 92% polyester/8% spandex
- Additional colors (all white body with color accent): cardinal, maroon, purple
- Sizes: Ladies S - 2XL

R7S1VTXK 12+ plain \$32.95

(reg. retail price \$48)



NEW! RUSSELL FAUX PLACKET PERFORMANCE JERSEY

- 92% nylon/8% spandex pinhole mesh
- **Braid trim available for additional charge**
- Additional colors: gray, cardinal, maroon, purple, white
- Sizes: Ladies S - 2XL

R737VTXK 12+ plain \$29.95

(reg. retail price \$44)



NEW! RUSSELL PERFORMANCE HENLEY

- 100% polyester stretch
- Additional colors: orange/white, cardinal/white, Columbia blue/white, gold/white, maroon/white, purple/white, white/black, white/navy, white/royal, white/red
- Sizes: Ladies S - 2XL

R316KWXX 12+ plain \$19.95

(reg. retail price \$30)



NEW! RUSSELL SUBLIMATED JERSEYS

- Choose from many styles, fabrics, patterns
- Allow 6-7 weeks for delivery
- Price includes team name and numbers
- Sizes: Ladies XS - 2XL

R7D7S2XU 12+ \$44.95

(reg. retail price \$63)

RUSSELL LOW RISE PANT WITH BELT LOOPS

- 100% nylon stretch double knit
- 2 set in rear pockets
- Colors: gray, black, navy, white
- Sizes: Ladies XS - 2XL

R72447XK 12+ plain \$41.95

(reg. retail price \$62)

RUSSELL LOW RISE KNICKER

R7S4DBXK 12+ plain \$20.95

(reg. retail price \$30)

SPECIAL PRICING AVAILABLE ON DECORATED UNIFORMS

Go to www.longstreth.com/team to view the team specials on the Line Drive and Extra Innings program. Go to www.team.russellathletic.com to build your uniform and send to our team reps.

INTENSITY UNIFORMS



BELT NOT INCLUDED

YOUTH SIZES

INTENSITY ALL STAR RACERBACK

- 100% polyester/pin dot mesh
- Additional colors (all with white trim): orange, maroon, gold, gray, white, purple
- Sizes: Ladies XS - 2XL, Youth S - L

INT5040W 12+ plain \$19.95

(reg. retail price \$29)



YOUTH SIZES

NEW! INTENSITY BUTTON FRONT INFIELD JERSEY

- 100% polyester pin dot mesh
- Additional colors: white, gold, purple, maroon, gray, orange
- Sizes: Ladies XS - 2XL, Youth S - L

INT5010W 12+ plain \$25.95

(reg. retail price \$38)



YOUTH SIZES

NEW! INTENSITY PIN DOT MESH HENLEY

- 100% polyester pin dot mesh/mock mesh
- Additional colors: white/white, purple/white, maroon/white, gold/white, orange/white
- Sizes: Ladies XS - 2XL, Youth S - XL

INT5131W 12+ plain \$22.95

(reg. retail price \$37)



YOUTH SIZES

INTENSITY V-NECK PIN DOT MESH JERSEY

- 100% polyester pin dot mesh
- Additional colors: white, gold, maroon, purple, orange, gray
- Sizes: Ladies XS - 2XL, Youth S - L

INT5030W 12+ plain \$18.95

(reg. retail price \$28)

INTENSITY PREMIUM LOW RISE PANT WITH BELT LOOPS

- 100% polyester microfiber
- Double seat slide protector
- Two rear welt pockets
- Braid available for additional charge
- Colors: white, black, red, royal, navy, gunmetal, or gray
- Sizes: Ladies XS - 2XL

INT5306 12+ plain \$29.95

(reg. retail price \$40)

NEW! INTENSITY BELTED BASIC PANT

- 100% Polyester with soil release
- Colors: black, navy, gunmetal, white
- Sizes: Ladies XS - 2XL, Youth S - XL

INT5301W 12+ plain \$20.95

(reg. retail price \$33)

INTENSITY SOFTBALL PANT

- Soil release heavy duty poly double knit
- Colors: black, white, gray, navy, royal, dark green, or scarlet
- Sizes: Ladies XS - 2XL, Youth S - XL

INT5300 12+ plain \$19.95

(reg. retail price \$29)

INTENSITY PREMIUM LOW RISE PANT WITHOUT BELT LOOPS

- 100% polyester microfiber
- Two rear welt pockets
- Colors: white, black, red, royal, navy, or gray
- Sizes: Ladies XS - 2XL, Youth S - XL

INT5305 12+ plain \$22.95

(reg. retail price \$35)



12 piece team pricing shown for plain goods. Please call for embellishment quote and/or volume discount for larger orders.

www.longstreth.com

800.545.1329

DEFINING THE WOMEN'S GAME





AVAILABLE IN YOUTH SIZES

AUGUSTA BLAST HENLEY JERSEY

- Polyester jersey with pinhole mesh inserts
 - Sizes: Ladies S - 2XL, Youth S - L
- AUG1532 12+ plain \$14.95**
(reg. retail price \$18)



AVAILABLE IN YOUTH SIZES

AUGUSTA TORNADO JERSEY

- 92% polyester/8% spandex pinhole mesh
 - Sizes: Ladies S - XL, Youth S - L
- AUG1355 12+ plain \$12.95**
(reg. retail price \$18)



AVAILABLE IN YOUTH SIZES

AUGUSTA HEAT JERSEY

- 92% polyester/8% spandex
 - Sizes: Ladies S - XL, Youth S - L
- AUG1270 12+ plain \$14.95**
(reg. retail price \$22)



AVAILABLE IN YOUTH SIZES

NEW! AUGUSTA SOLID HENLEY

- 100% polyester wicking knit
 - Two button placket
 - Sizes: Ladies S - 2XL, Youth S - L
- AUG1212 12+ plain \$9.95**
(reg. retail price \$14.50)

BELT NOT INCLUDED

AUGUSTA LOW RISE COLLEGIATE PANT

- 100% polyester double knit
 - 2 back pockets
 - Sizes: Ladies S - XL, Youth S - L
- AUG1248 12+ plain \$23.95**
(reg. retail price \$36)

Add \$1 for 2XL jersey and pant

AUGUSTA LOW RISE SOFTBALL PANT

- 14 oz. 100% polyester double knit
 - Elastic waist with inside drawcord
 - 2 set in double welt back pockets
 - Sizes: Ladies S - XL, Youth S - L
- AUG828 12+ plain \$18.95**
(reg. retail price \$28)

Add \$1 for 2XL jersey, add \$2 for 2XL pant

AUGUSTA LOW RISE DRIVE PANT

- 100% double knit polyester
 - Sizes: Ladies S - XL, Youth S - L
- AUG1245 12+ plain \$17.95**
(reg. retail price \$27)

Add \$1 for 2XL jersey and pant

AUGUSTA LOW RISE HOMERUN PANT

- 100% polyester double knit
 - Double welt pockets
 - Sizes: Ladies XS - XL, Youth S - L
- AUG1240 12+ plain \$19.95**
(reg. retail price \$30)

Add \$2 for 2XL jersey, add \$1 for 2XL pant

AUGUSTA UNIFORMS ARE AVAILABLE IN A WIDE RANGE OF COLORS. GO TO LONGSTRETH.COM FOR A COMPLETE LISTING.



12 piece team pricing shown for plain goods. Please call for embellishment quote and/or volume discount for larger orders.



LADIES BLAST JERSEY

LADIES LOW RISE COLLEGIATE PANT

LADIES BLAST JERSEY AUG1532 | AUG1533

LADIES LOW RISE COLLEGIATE PANT AUG1248 | AUG1249

PITCH, RUN, SLIDE, SCORE. TEAMS START HERE.

BADGER UNIFORMS



YOUTH SIZES

NEW! BADGER LADIES SPEEDSTER JERSEY

- 100% polyester moisture wicking/ antimicrobial
- Additional colors: pink/white, orange/white, gold/white, columbia blue/white, graphite/white, hot pink/white, lime/white, royal/hot coral, white/black
- Sizes: Ladies XS - 2XL, Youth S - L

BA6173 12+ plain \$10.95
(reg. retail price \$18)



YOUTH SIZES

NEW! BADGER LADIES RALLY JERSEY

- 100% polyester moisture wicking/ antimicrobial
- Additional colors: pink/white, orange/white, gold/white, columbia blue/white, purple/white, graphite/white, hot pink/white, lime/white, white/black
- Sizes: Ladies XS - 2XL

BA6170 12+ plain \$10.95
(reg. retail price \$18)



YOUTH SIZES

NEW! BADGER LADIES ADRENALINE JERSEY

- 100% polyester moisture wicking/ antimicrobial
- Additional colors: columbia blue/white, purple/white, hot pink/white, hot coral/white, lime/white, solar yellow/black, solar orange/black, white/black
- Sizes: Ladies XS - 2XL, Youth S - L

BA6172 12+ plain \$10.95
(reg. retail price \$18)

NEW! BADGER LADIES ACE SHORT

- 100% polyester moisture wicking/ antimicrobial
- 6" inseam
- Colors: pink/white, orange/white, red/white, gold/white, columbia blue/white, royal/white, navy/white, black/white, graphite/white, hot pink/white, lime/white, royal/hot coral
- Sizes: Ladies XS - 2XL, Youth S - L

BA4115 12+ plain \$9.95
(reg. retail price \$14)

NEW! BADGER BIG LEAGUE LOW RISE PANT

- 100% polyester double knit
- Two set in back pockets
- Braid available for additional charge
- Colors: navy, black, graphite, medium grey, white
- Sizes: Ladies XS - 2XL, Youth S - L

BA7303 12+ plain \$15.95
(reg. retail price \$23)

NEW! BADGER LADIES MOTION SHORT

- 100% polyester moisture wicking/ antimicrobial
- 6" inseam
- Colors: red/white, columbia blue/white, royal/white, navy/white, purple/white, black/white, hot pink/white, hot coral/white, lime/white, solar yellow/black, solar orange/black, white/black
- Sizes: Ladies XS - 2XL, Youth S - L

BA4101 12+ plain \$9.95
(reg. retail price \$14)

* Badger Jerseys are not available in dark green

TEAMWORK UNIFORMS



YOUTH SIZES

TEAMWORK INFINITY FAUX BUTTON JERSEY

- Lightweight mock mesh
- Top 2 buttons open
- Sizes: Ladies XS - XL, Youth S/M - L/XL

TEA1849 12+ plain \$16.95
(reg. retail price \$23)



YOUTH SIZES

TEAMWORK SUPERNOVA RACERBACK JERSEY

- Lightweight moisture-wicking mock mesh
- Sizes: Ladies XS - XL, Youth S/M, L/XL

TEA1778 12+ plain \$22.95
(reg. retail price \$30)



YOUTH SIZES

TEAMWORK CHANGE UP BUTTON DOWN JERSEY

- Moisture wicking cool mesh polyester
- Sizes: Ladies XS - XL, Youth S - XL

TEA1279 12+ plain \$18.95
(reg. retail price \$26)



YOUTH SIZES

TEAMWORK ON DECK SLEEVELESS JERSEY

- Cool mesh polyester
- Faux button front
- Sizes: Ladies XS - XL, Youth S/M - L/XL

TEA1846B 12+ plain \$14.95
(reg. retail price \$20)

TEAMWORK LOW RISE PRO WEIGHT PANT

- 14 oz. stretch polyester
- Sizes: Ladies 2XS - XL, Youth S - L

TEA3242 12+ plain \$27.95
(reg. retail price \$39)

TEAMWORK SUPERNOVA SHORT

- Lightweight moisture-wicking mock mesh
- 5" inseam
- Sizes: Ladies S - XL, Youth S - L

TEA4778 12+ plain \$18.95
(reg. retail price \$24)

TEAMWORK CHANGE UP LOW RISE PANT

- 12 oz. moisture wicking polyester
- Sizes: Ladies XS - XL, Youth S - XL

TEA3279 12+ plain \$18.95
(reg. retail price \$24)

TEAMWORK LOW RISE PIPED PANT

- Stretch polyester
- Sizes: Ladies 2XS - XL, Youth S - L

TEA3245 12+ plain \$27.95
(reg. retail price \$39)

TEAMWORK UNIFORMS ARE AVAILABLE IN A WIDE RANGE OF COLORS. GO TO LONGSTRETH.COM FOR A COMPLETE LISTING.



12 piece team pricing shown for plain goods. Please call for embellishment quote and/or volume discount for larger orders.

www.longstreth.com

800.545.1329

DEFINING THE WOMEN'S GAME



DON ALLESON UNIFORM



YOUTH SIZES

NEW! ALLESON RACERBACK JERSEY

- 100% polyester/pindot mesh
- Additional colors: charcoal/white, gray/white, maroon/white, pink/white, purple/white, white/charcoal
- Sizes: Ladies S - 2XL, Youth S - L

DA551JW 12+ plain \$14.95
(reg. retail price \$23) Available 12/1/13

NEW! ALLESON PIPED SOFTBALL PANT

- 100% double knit polyester
- Two set in back pockets
- Colors: black/white, gray/black, gray/navy, gray/royal, gray/red, gray/white, navy/white, royal/white, red/white
- Sizes: Ladies XS-2XL, Youth S - XL

DA625PLW 12+ plain \$18.95
(reg. retail price \$27) Available 12/1/13
Add \$2 for 2XL, jersey and pant

BACK

HIGH 5 UNIFORM



YOUTH SIZES

NEW! HIGH FIVE FAUX FRONT JERSEY

- 100% polyester flat back mesh
- Pinhole mesh contrast inserts
- Sizes: Ladies S - 2XL, Youth M - L

HF12142 12+ plain \$17.95
(reg. retail price \$26)

* Jersey not available in dark green

NEW! HIGH FIVE ARC SOFTBALL PANT

- 100% polyester double knit
- Two set in back pockets
- Sizes: Ladies S - 2XL, Youth S - L

HF15122 12+ plain \$21.95
(reg. retail price \$31)

Add \$2 for 2XL, jersey and pant

GO TO ALLESON.COM TO BUILD A CUSTOM UNIFORM,
CALL OUR TEAM REPS FOR DETAILS.

HIGH 5 UNIFORMS ARE AVAILABLE IN A WIDE RANGE OF
COLORS. GO TO LONGSTRETH.COM FOR A COMPLETE LISTING.



12 piece team pricing shown for plain goods. Please call for embellishment quote and/or volume discount for larger orders.



TEAM PANTS



EASTON PRO LOW RISE PANT

- 100% polyester/microfiber fabric
- Belt loops and 2 set in back pockets
- Ladies stock colors: white, black
- Sizes: Ladies 2XS - 2XL, Youth S - XL

EA164147 1-11 12+
\$32.95 \$25.95



BELT NOT INCLUDED

BRAID AVAILABLE AT ADDITIONAL CHARGE

WILSON PRO T3 LOW RISE PANT

- Premium poly warp knit fabric
- 2 set in back pockets
- Stock colors: black, blue gray
- Also available for 12+ orders: navy, royal, red, white
- Add braid to 6+ orders for \$8, ships in 72 hours
- Sizes: Ladies 2XS - 2XL

WTC7609B0 1-11 12+
\$33.95 \$25.95



MIZUNO BELTED LOW RISE PANT

- 100% polyester double knit
- Built in slider
- 2 set in back pockets
- Stock color: black
- Colors also available for 12+ orders: white, navy, gray, royal, red
- Sizes: Ladies 2XS - 2XL

MI350150 1-11 12+
\$39.95 \$30.95

Pants also available without belt loops and in youth sizes for team orders



WILSON ELASTIC BELT

- Adult (one size fits most)
- Youth (waist 18" - 32")
- Stock colors: black, navy, red, royal
- Also available for 12+ orders: cardinal, dark brown, forest, gold, kelly, maroon, orange, purple, teal, texas orange, silver, columbian blue, or white

1-11 12+
WTA4442 Adult \$5.95 \$4.95
WTA4444 Youth \$4.95 \$3.95



AUGUSTA ELASTIC BELT

- Colors: lime, yellow, pink, black, red, royal, navy, orange, maroon, gold, purple, kelly, dark green, silver gray, or teal

12+
AUG6001 Adult \$4.95
AUG6002 Youth \$3.95

SEE DEMARINI PANTS ON PAGE 45

PERFORMANCE WEAR



UNDER ARMOUR LOCKER TEES

- 100% polyester brushed fabric
- Stock colors short sleeve: white, black, heather gray, navy
- Stock colors long sleeve: white, black, heather gray, navy
- Additional team colors available for 12+ orders
- Sizes: Ladies XS - 2XL

Short Sleeve	<u>1-11</u>	<u>12+</u>
UA1233719	\$22.95	\$16.95
Long Sleeve		
UA1233721	\$27.95	\$20.95



NIKE LEGEND TEES

- 100% polyester Dri-FIT wicking fabric
- Stock colors: white, black
- Additional team colors available for 12+ orders
- Sizes: Ladies XS - 2XL

Short Sleeve	<u>1-11</u>	<u>12+</u>
N453181	\$24.95	\$18.95
Long Sleeve		
N453182	\$27.95	\$21.95

YOUTH SIZES

BADGER B-CORE TEES

- 100% polyester moisture management/antimicrobial
- Colors vary by style: pink, maroon, cardinal, orange, red, texas orange, gold, vegas gold, forest, kelly green, columbia blue, royal, navy, purple, brown, black, graphite, silver, white, safety yellow, hot pink, hot coral, lime
- Sizes: Ladies XS - 2XL, Youth XS - L

Short Sleeve Crew		
BA4160	12+	\$7.95
Short Sleeve V-neck		
BA4162	12+	\$7.95
Sleeveless V-neck		
BA4163	12+	\$7.95



UNDER ARMOUR COLDGEAR COMPRESSION MOCK

- 87% polyester/ 13% elastane
- Compression fit
- Stock colors: black, white, heather gray, navy, red
- Sizes: Ladies S - XL

	<u>1-11</u>	<u>12+</u>
UA1221816	\$49.95	\$36.95

UNDER ARMOUR COLDGEAR COMPRESSION TIGHT

- Compression fit
- Stock color: black
- Sizes: Ladies S - XL

	<u>1-11</u>	<u>12+</u>
UA1221968	\$49.95	\$36.95

TEAM SHORTS



UNDER ARMOUR TROPHY

- 100% soft mesh polyester
- 5" inseam
- Stock colors: black/white, navy/white, red/white, graphite/white
- Sizes: Ladies XS - XL

	<u>1-11</u>	<u>12+</u>
UA1228185	\$27.95	\$21.95



UNDER ARMOUR ESCAPE

- 100% polyester body and inner brief
- 3" inseam
- Stock colors: black/white, navy/white, charcoal/white, red/white
- Sizes: Ladies XS - XL

	<u>1-11</u>	<u>12+</u>
UA1209147	\$24.95	\$19.95

YOUTH SIZES

NIKE RESPECT

- 100% polyester flat back mesh
- 5" inseam
- Stock colors: black, navy
- Sizes: Ladies XS - 2XL, Youth XS - XL

Ladies	<u>1-11</u>	<u>12+</u>
N519545	\$24.95	\$18.95
Youth		
N519548		\$15.95



BADGER TRICOT MESH

- 100% polyester
- 5" inseam
- Stock colors: black, navy, forest, royal, purple, maroon, red, orange, gold, columbia blue, or white
- Sizes: Ladies S - XL

	<u>1-11</u>	<u>12+</u>
BA7216	\$11.95	\$10.95

Badger shorts also available as a 12+ team purchase in unisex size of 7", 9", or 11" shorts, as well as a 6" youth short. Please call for a team quote.



SLIDERS



NEW! UNDER ARMOUR STRIKE ZONE SLIDER

- HeatGear® fabric
- 7" inseam
- Stock colors: black, brilliance pink, electric blue pattern, strobe purple pattern, X-ray yellow pattern
- Sizes: Ladies XS - XL

Solid Colors	<u>1-11</u>	<u>12+</u>
UA1242351	\$34.95	\$24.95
Patterns		
UA1242736	\$34.95	\$24.95



EASTON LOW-RISE EXTRA PROTECTIVE SLIDING SHORT

- Poly/spandex Bio-Dri fabric
- 7" inseam short
- Stock colors: black, white
- Sizes: Ladies S - XL, Youth M - XL

	<u>1-11</u>	<u>12+</u>
EA164060	\$24.95	\$19.95
EA164057 Youth		\$19.95



MIZUNO LOW RISE SLIDER WITH PADDING

- 80% poly/16% nylon/4% spandex
- Shorter inseam for under pants
- Stock colors: black, white
- Sizes: Ladies 2XS - 2XL

MI350292	<u>1-11</u>	<u>12+</u>
	\$24.95	\$19.95



INTENSITY LOW RISE SLIDER

- 84% polyester/16% spandex
- Ladies 7" inseam, youth 5" inseam
- Ladies stock colors: black/ yellow, black/ neon pink
- Youth stock colors: black/ white zebra, black/ yellow
- Sizes: Ladies XS - 2XL, Youth L - XL

	<u>1-11</u>	<u>12+</u>
INT5000	\$24.99	\$19.95
INT5001 Youth	\$21.95	\$16.95

TEAM SOCKS

COMBINATION SOCK

- Must order in even dozens
- Drop ship only
- Sizes (Unisex): R12 / Large, R10 / Medium, R8 / Small, R6 / Extra-small

HL77 **12+** **\$3.95**



WEAR THE PEAR SOCK

- Colors: black, white, red, navy, royal, forest green, maroon, purple, light purple, bright gold, vegas gold, yellow, orange, gray, kelly green, fuchsia, brown, lime green, or bubblegum pink
- Sizes (Unisex): 6 - 8 (length 19" - 20"), 9 - 11 (length 23" - 24"), 10 - 13 (length 29" - 30")

PSAS 1-11 12+
\$4.95 \$3.95



UNDER ARMOUR HEATGEAR SOCK

- Stock colors: black, navy, red, royal, white
- Also available for 12+ orders: purple, green, Columbia, orange
- Sizes (Unisex): Medium (7 - 10.5), Large (11 - 13)

UA405 Single Pair 1-11 12+
\$9.95 \$7.95



NIKE PRO SUPPORT 2PK SPORT SOCK

- 98% nylon/2% spandex
- Pack includes 2 pairs
- Stock colors: black, white, navy, red
- Sizes: Unisex Medium (6 - 10), Youth Medium (3Y - 5Y)

NSX3760 Unisex 1-11 12+
\$15.99 \$12.95
NSX3759 Youth 1-11 12+
\$15.99 \$12.95



UNDER ARMOUR ALL SEASON GEAR 4 PK NO SHOW SOCKS

- Full cushion footbed
- Colors: black or white
- Size: Ladies M (9 - 11)

UA3011 1-11 12+
\$16.95 \$13.95



THIS CATALOG FEATURES OUR BEST SELLING SOCKS. CALL 800-545-1329 OR VISIT LONGSTRETH.COM FOR OUR FULL SELECTION.

CUSTOM SOCKS



SAFARI STRIPE



PAWS



STARS



SOLID



STIRRUP



KRAZISOX

RED LION CUSTOM FASHION SOCKS - Call for details

- Sizes (Unisex): Small (6 - 8 1/2), Medium (9 - 11), Large (10 - 13)

RLSAFARI	Safari Stripe	36+	\$7.95
RLPAWS	Paws	36+	\$7.95
RL7688	Stars	36+	\$7.95

* Allow 2 - 4 weeks for delivery

* Allow 10% variance in quantity on custom socks

TWIN CITY CUSTOM SOCKS - Call for details

- Sizes (Unisex): Solids: Medium (22"), Large (25"), Stirrups XS - L, Krazisox S - XL

TCLTAM/TAK	Solid Tube	24+	\$7.95
TCLR1	Stirrups	24+	\$8.95
TCLPOSP	Krazisox	24+	\$8.95

* Allow 4 - 6 weeks for delivery - must order 24-pieces per color and size

JACKETS / WARM-UPS



NEW! UNDER ARMOUR PREGAME WARM-UP

- 100% woven polyester
- Stock colors all trimmed in white: black, navy, graphite
- Also available for 12+ orders: red, royal, forest green, maroon, purple, cardinal
- Sizes: Ladies XS - 2XL

Jacket	<u>1-11</u>	<u>12+</u>
UA1239020	\$54.95	\$42.95
Pant		
UA1239021	\$49.95	\$38.95



NEW! NIKE AVENGER WARM-UP

- 100% polyester Dri-FIT knit
- Stock colors: black, navy
- Also available for 12+ orders: anthracite, dark green, royal, purple, cardinal, scarlet, dark maroon
- Sizes: Ladies S - 3XL (tall sizes available)

Jacket	<u>1-11</u>	<u>12+</u>
N535663	\$69.95	\$53.95
Pant		
N535664	\$59.95	\$45.95



BACK

HOLLOWAY AGGRESSION JACKET

- Polyester textured dobby fabric
- Wind/water resistant
- Colors: black/gold, black/orange, black/scarlet, black/white, dark green/white, maroon/white, navy/gold, navy/white, purple/white, royal/white, red/white
- Sizes: Unisex XS - 3X, Youth S - L

H229062 12+ plain \$44.95



NEW! AUGUSTA DRIVE 1/2 ZIP PULLOVER

- 100% polyester diamond tech
- Front pockets
- Colors all trimmed in graphite/white: black, red, royal, navy, maroon, purple, dark green, graphite
- Sizes: Unisex XS - 3XL

AUG3720 12+ plain \$27.95
Add \$3 for 2/3XL



HOLLOWAY HURRICANE JACKET

- Water resistant micro-cord polyester fabric
- Colors: maroon, scarlet, black, dark green, navy, or royal (Also available in black/scarlet and black/orange)
- Sizes: Unisex XS - 3XL

H9064 12+ plain \$41.95



ADIDAS GAME DAY 1/4 ZIP

- 100% polyester climalite®
- Stock colors all trimmed in white: black, lead, navy
- Available for 12+ orders: red, royal, purple, maroon, forest green, burgundy, white/black
- Sizes: Ladies XS - 2XL

	<u>1-11</u>	<u>12+</u>
AD6953	\$43.95	\$39.95



NEW! BADGER FUSION 1/4 ZIP

- 100% heathered polyester
- Two front pockets
- Carbon body, trim color: red, royal, white, lime
- Steel body, trim color: navy, black, neon yellow
- Sizes: Unisex XS - 4XL

BA1481 12+ plain \$29.95
Add \$3 for 3X and \$5 for 4X



AUGUSTA 1/2 ZIP PULLOVER

- 90% polyester/10% spandex
- Colors all with white trim: black, red, royal, navy, maroon, purple, dark green
- Sizes: Ladies XS - 2XL

AUG4710 12+ plain \$27.95
Add \$3 for 2XL

12 piece team pricing shown for plain goods. Please call for embellishment quote and/or volume discount for larger orders.

UNIFORM ORDER GUIDE

- 1.** Pick your logo or design your own
\$5 for standard embellishment



2", 3", 4", 6", or 8" #

- 2.** Select your font/letter style
- ATHLETIC** **OUTLINE**
Brush Script **PLAIN BLOCK**
Cooper Black **SHADOW**
 *or a font of your choice

- 3.** Choose logo location



- 4.** Contact our Team Sales Specialists

CALL 1.800.545.1329 or
 EMAIL team.sales@longstreth.com
 VISIT longstreth.com for more details

PRACTICE PACKAGES

Ordering Information Choose a package • Choose logo style and color • Choose garment color where a choice is indicated • You may mix sizes within packages • 2XL and up at additional cost • **12 package minimum** • Quick turnaround • No returns on embellished garments • Shipping costs are additional • **Price includes 1-color screen print!**

New Lower Pricing for 2013/2014 Season! Save up to 28% on Team Pricing!

\$20

The Shutout

SAVE \$8

(PKG #1)



LOGO E

INCLUDES ONE OF EACH OF THE FOLLOWING:

- Unisex oxford gray long sleeve t-shirt
- Unisex white t-shirt
- Badger ladies team color 5" mesh short

* Also available in youth sizes

\$40

The All-Star

SAVE \$6

(PKG #4A)



LOGO B

INCLUDES ONE OF EACH OF THE FOLLOWING:

- Unisex light oxford gray hooded sweatshirt
- Unisex white short sleeve t-shirt
- Unisex team color sweatpant*

* Choice of unisex cut open bottom, or unisex elastic hem sweatpant

\$52

The Victory

SAVE \$8

(PKG #7)



LOGO I

INCLUDES ONE OF EACH OF THE FOLLOWING:

- Badger unisex color block panel hooded sweatshirt with team color accent
- Unisex white t-shirt
- Badger ladies team color sweatpant – choice of open bottom or elastic hem
- Badger ladies team color 5" mesh short

\$67

The Elite

SAVE \$11

(PKG #22)



NEW STYLE!
LOGO F2

INCLUDES ONE OF EACH OF THE FOLLOWING:

- Badger unisex color-block panel hooded sweatshirt with team color accent
- Unisex oxford gray long sleeve t-shirt
- Unisex white short sleeve t-shirt
- Badger ladies team color open-bottom sweatpants with pocket
- Team color drawstring cinch bag
- Badger ladies team color 5" mesh short

\$69

The Defender

SAVE \$6

(PKG #37)



LOGO L

INCLUDES ONE OF EACH OF THE FOLLOWING:

- Badger unisex team color performance fleece hood
- Badger ladies team color performance tee
- Badger ladies team color performance fleece open bottom pant with pockets
- Badger ladies team color 5" mesh short

\$105

The Under Armour Team

SAVE \$19

(PKG #38)



LOGO H

INCLUDES ONE EACH OF THE FOLLOWING:

- Ladies team color performance fleece hood (loose fit)
- Ladies white or heather gray short sleeve crew neck tech tee
- Ladies performance fleece pant with pockets and open bottom
- Ladies team color 5" Trophy short

NOTE: Pant available in black, heather gray, or carbon heather only. May substitute unisex hood or unisex closed bottom pant.

MOST PACKAGES ARE AVAILABLE IN MANY COLOR CHOICES. CALL ONE OF OUR TEAM SPECIALISTS FOR DETAILS. CHECK OUR WEBSITE FOR ADDITIONAL PACKAGES AT LONGSTRETH.COM

Additional Logo Styles:
Logo Style A

Logo Style C

Logo Style D

NEW STYLE!

Logo Style G2

Logo Style J

NEW STYLE!

Logo Style K2

Logo Style M





SOME PLAY BALL, OTHERS ARE
BALL PLAYERS.

W HEATER FLEECE



WINTERIZED FABRIC



MOISTURE WICKING FABRIC



STRATEGIC VENTING

INTRODUCING
2014 **DEMARINI**
WOMEN'S
APPAREL

W YARD-WORK
TRAINING SHORTS



MOISTURE WICKING FABRIC



LIGHTWEIGHT STRETCH



ROLLOVER WAIST



BATTING GLOVE POCKET



TRAINING:

NEW! DEMARINI HEATER FLEECE

- Single sided fleece, moisture wicking
- Strategic venting
- Stock color: black
- Available for 12+ orders: navy, royal, scarlet, dark green, maroon, purple
- Sizes: Ladies S - XL

	<u>1-11</u>	<u>12+</u>
WTD3011 plain	\$54.95	\$39.95

NEW! DEMARINI YARD WORK SHORTS

- Lightweight stretch, moisture wicking
- 3 ½" inseam, rollover waist
- Stock colors: black/black print, charcoal gray/lime, lime/charcoal gray
- Sizes: Ladies S - XL

	<u>1-11</u>	<u>12+</u>
WTD3016	\$34.95	\$24.95



GAME DAY:

NEW! DEMARINI TEAMWEAR LOW RISE PANT

- 100% polyester
- Belt loops, two back pockets
- Double layer knees
- Stock color: black
- Available for 12+ orders: gray, white
- Sizes: Ladies S - 2XL

	<u>1-11</u>	<u>12+</u>
WTC7605	\$44.95	\$31.95

NEW! DEMARINI COMOTION SLIDERS

- Four way stretch, moisture wicking
- Strategic ventilation, slide zone protection
- Stock color: black
- Sizes: Ladies S - XL

	<u>1-11</u>	<u>12+</u>
WTD3051	\$29.95	\$21.95



POST GAME:

NEW! DEMARINI FULL ZIP FLEECE HOODIE

- Moisture wicking quick dry fabric
- Relaxed fit
- Stock colors: black, dark heather gray
- Sizes: Ladies S - XL

	<u>1-11</u>	<u>12+</u>
WTD3060 plain	\$54.95	\$41.95

NEW! DEMARINI FLEECE PANT WITH POCKETS

- Moisture wicking quick dry fabric
- Relaxed fit, roll down waist
- Stock colors: black, dark heather gray
- Sizes: Ladies S - XL

	<u>1-11</u>	<u>12+</u>
WTD3070 plain	\$49.95	\$38.95



Pricing shown for plain goods. Please call for embellishment quote and/or volume discount for larger orders.

PRSRRT STD
U.S. POSTAGE PAID
MADISON, WI
PERMIT NO. 2223

**LONGSTRETH
SOFTBALL**

P.O. Box 475, 28 Wells Road
Parker Ford, PA 19457
www.longstreth.com

CATALOG CODE: S14

Longstreth and Under Armour Proudly Sponsor

2014 TEAM UNIFORM MAKEOVER!



Enter
Your Team
to Win

The winning team will receive 15 sets of the Under Armour Recruit Sleeveless Jersey and Heater Softball Pant! Jerseys includes one-color team name on front and one-color number on back. Enter before February 15, 2014.

To enter, email or send a picture of your current team with a brief statement on why your team should be chosen.

Enter at <http://www.longstreth.com/teammakeover.asp> or mail entries to 28 Wells Road, P.O. Box 475, Parker Ford, PA 19457
Attn: Softball Uniform Contest



Enter Your
Team
Today!