

KICKER®

VEHICLE SPECIFIC SOLUTIONS

VSS

SCHAL08

Designed for 2008 - 2014 Dodge® Challenger vehicles

Subwoofer Assembly



200W Amplifier



Wire Harness

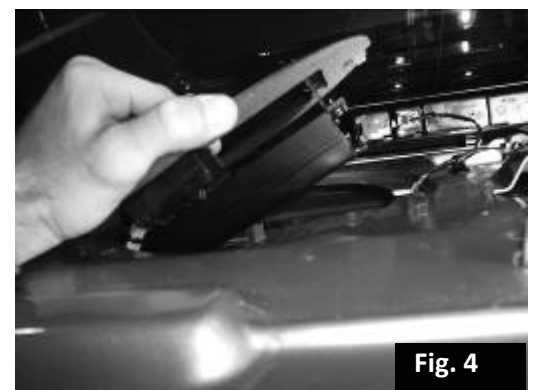
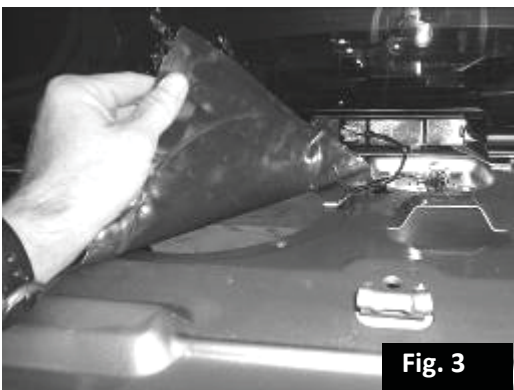
- Wire Ties x6
- 25A Fuse
- #8 Sheet Metal Screws x4
- Body Clip
- M6 Bolt x2
- Vehicle-to-Sub Bracket

Power Wire Routing

1. Open trunk, lift load floor and disconnect negative battery cable.
2. Fold rear seat backs into the down position.
3. To remove the rear package tray, first remove two plastic retainers securing the package tray along the top of the trunk opening and one on each side securing the rear side panels. Fig. 1
4. Remove the package tray by pulling the rear side panels out enough to slide the package tray down to reveal the rear speakers and amplifier mounting location. Fig. 2



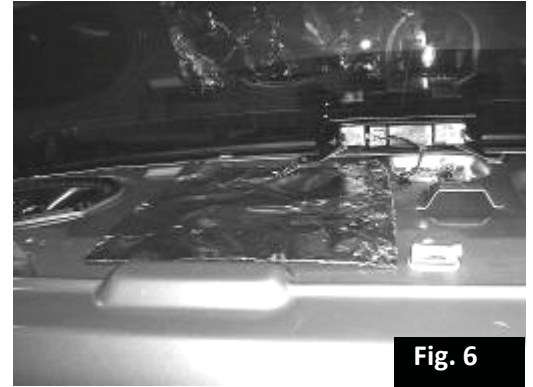
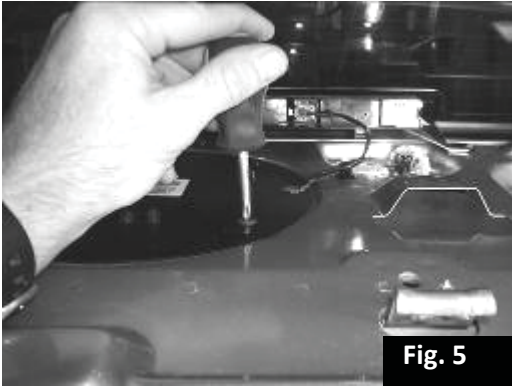
5. If the car is equipped with an eight speaker Boston Acoustics® system find the subwoofer mounted in the rear deck and remove the four screws securing it in place. Remove the subwoofer but save the mounting screws for installation of subwoofer amplifier.
6. If the car is not equipped with the Boston Acoustics® system the hole will be covered by a self-adhesive sound dampening material. Remove the dampening material and save for reinstallation later. Fig. 3
7. Install the amplifier assembly in the hole in the rear deck. Fig. 4



Remember to place your warranty card in the glove box for future use.

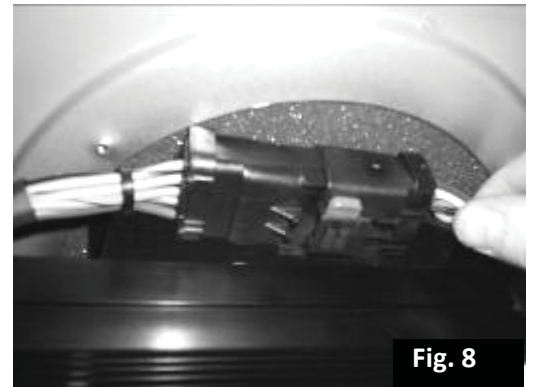
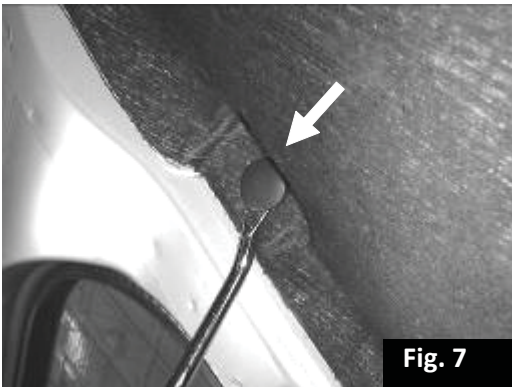
8. Secure the amplifier assembly using the previously removed screws. Screws (#8 sheet metal) are provided for cars not equipped with the factory subwoofer. Fig. 5

9. Replace the sound dampening material (if so equipped) over the amplifier assembly. Fig. 6



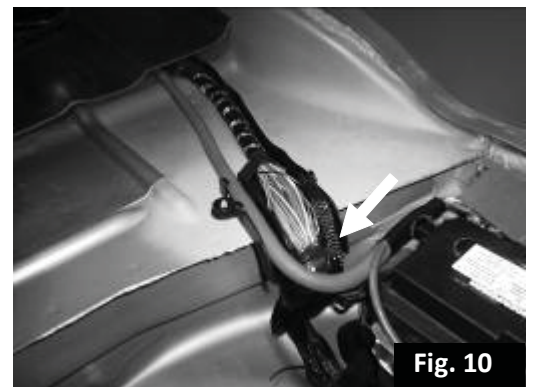
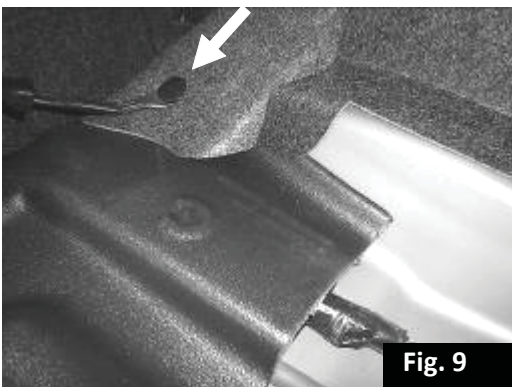
10. Remove the six plastic retainers securing the large panel directly below the package tray and remove the panel from the trunk. Fig. 7

11. Plug the ten pin connector of the wire harness into the amplifier. Fig. 8



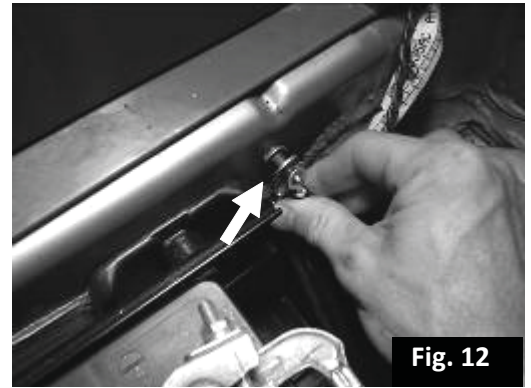
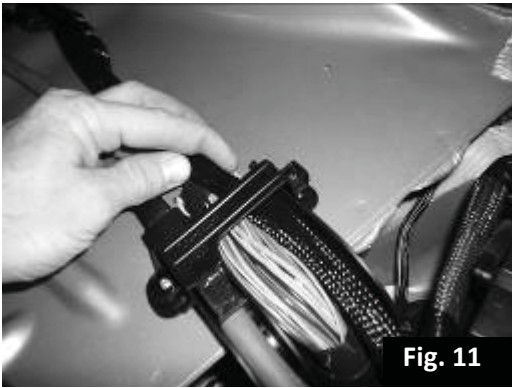
12. Remove the plastic retainer securing the right side of the trunk liner to the floor to allow for wire routing. Fig. 9

13. Route the power and ground portion of the wire harness down the right side of the rear seat pass through and toward the battery along side the factory wiring using the supplied wire ties where needed. Fig. 10



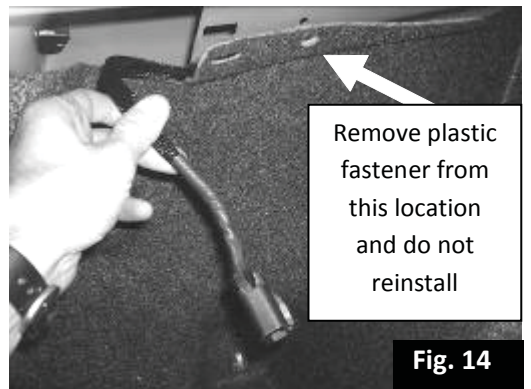
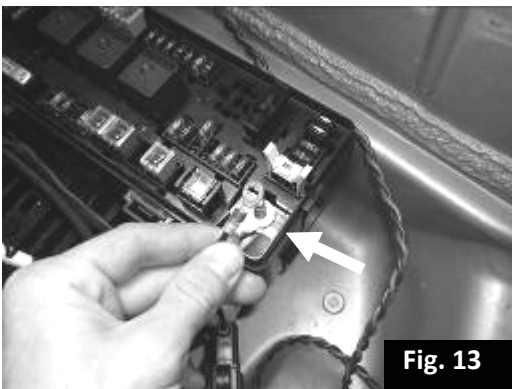
14. Secure the harness with the factory retaining bracket. Fig. 11

15. Connect the ground wire to the body of the car at the factory ground point between the fuse box and the battery. Torque to 5Nm. Fig. 12



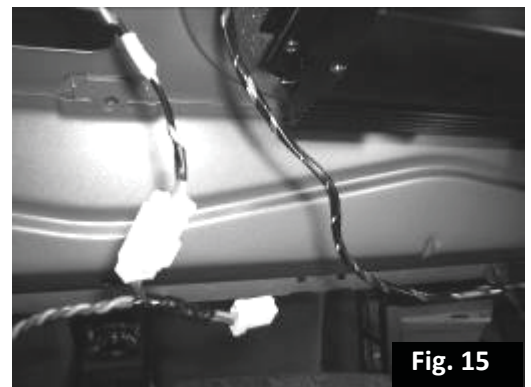
16. Connect the power wire to the fuse box main lug. Torque to 14Nm. Fig. 13

17. Route the speaker output portion of the harness toward the left rear fender well and back to the subwoofer mounting location. The wire harness needs to route low enough that it will not be pinched by the subwoofer mounting bracket. Fig. 14



Subwoofer Connection with Factory Premium System

18. If the car is equipped with the eight speaker Boston Acoustics® system, plug the connector that originally connected to the factory subwoofer into the corresponding connector of the subwoofer body harness. Fig. 15



Subwoofer Input Connection without Optional Multi-Channel Amplifier



19. If you are not installing the optional multi-channel amplifier disconnect the left rear speaker connector. Plug the white male speaker connector into the white female connector of the wire harness. Plug the white male connector back into the speaker. Fig. 16

Subwoofer Input Connection with Optional Multi-Channel Amplifier

20. Connect the three pin connector of the subwoofer body harness to the corresponding connector of the amplifier body harness.

Subwoofer Installation



21. Install the speed clip that is provided onto the sheet metal just behind the left rear fender well. Fig. 17

22. Install the subwoofer mounting bracket using one of the supplied M6 bolts. Fig. 18

23. Remove the bag from the subwoofer assembly and lay it in the corner of the trunk where the subwoofer assembly will be placed. The purpose of the bag is to prevent the Velcro® mounting system on the bottom of the subwoofer assembly from engaging the carpet prematurely. Fig. 19



24. Set the subwoofer assembly in place, install the M6 bolt and tighten. Fig. 20
25. Connect the four pin connector of the wire harness to the subwoofer assembly.
26. Apply moderate pressure to the front of the enclosure while pulling the bag out from under it. Fig. 21



27. Reinstall all previously removed parts in reverse order.
28. Reconnect negative battery cable. Torque to 5Nm.
29. Install fuse into fuse holder.

Troubleshooting the Kicker Integrated Systems

If you experience a problem once the Subwoofer is installed use this guide to locate the trouble.

The radio is working, but the Subwoofer is not working:

- Check the battery voltage to make sure it is not discharged below 11 volts.
- Check the negative battery cable to see if it has been securely tightened back on the battery.
- Check the inline fuse located near the battery to make sure it is plugged in completely, and not blown.
- Check the inline +12Volt power-connector near the firewall to make sure it is plugged in securely.
- Check the inline connectors near the subwoofer enclosure to make sure they are plugged securely.
- Check the ground wire connection to make sure it is tightly secured to the proper ground in the vehicle.
- Check the audio input signal connection to make sure it is secure and connected to the proper wiring.
- Test with different music in case there is no low frequency audio in the initial sound check.

There is a buzz or rattle noise that accompanies the low frequency element of the music:

- Check for a connector or any other object that could be very near the enclosure.
- Check the subwoofer enclosure mounting brackets to make sure they are secure.

Symptom	Possible Cause	Solution
No Subwoofer Output	Fuse not installed in inline fuse holder on subwoofer and / or amp harness	Install fuse into fuse holder. Refer to instructions for correct placement
	Low battery voltage	Recharge the battery
	Negative battery cable not connected	Reconnect negative battery cable
	Power wire connecter not connected to body harness	Connect power wire to body harness. Check for loose connection
	Ground wire not grounded properly	Check ground wire with voltmeter to insure it is a good ground
	Balance or fader controls not set to neutral position	Set balance and fader control to center settings. (only effects stand alone subwoofer kit)
	No low frequency information in music	Test with several different songs
	Subwoofer harness not properly / completely connected to subwoofer.	Securely fasten both of the connectors on the subwoofer harness to the subwoofer. Check for loose connections.
Radio Not Coming On	Blown radio fuse	Refer to owner's manual for radio fuse location and value
	Low battery voltage	Recharge the battery
Radio Comes On, But No Sound From Any Speakers	Fuse not installed in inline fuse holder on amplifier harness	Install fuse into fuse holder. Refer to instructions for correct placement
	Ground wire not grounded properly	Check ground wire with voltmeter to insure it is a good ground
	Low battery voltage	Recharge the battery

If you continue to experience problems after troubleshooting, please contact KICKER Technical Support at (800) 256-0808 ext. 6009, or support@kicker.com.



P.O. Box 459 • Stillwater, Oklahoma 74076 • USA • (405) 624-8510

