

# School Health Office Resources

2021-2022



## Table of Contents

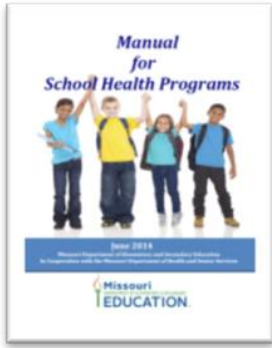
Missouri Manual for School Health .....	2
Medication Administration in the School Setting.....	2
Emergency Guidelines for School staff.....	2
Screening Guidelines .....	2
CHRONIC CONDITIONS .....	3
Managing Children with Diabetes in the School Setting.....	3
Managing Children with Epilepsy in the School Setting.....	4
Managing Children with Food Allergies in the School Setting .....	4
Managing Communicable Diseases in the School Setting .....	5
Immunization Resources .....	5
Concussion Awareness for Health Services Staff .....	5
Managing Children with Mental Health concerns or Autism in the School Setting .....	6
Head Lice and Bed Bugs.....	6
Child Abuse and Neglect Hotline Unit .....	7
Student Privacy Guidance .....	7
Missouri Department of Health and Senior Services.....	7
Other Resources .....	8
Medication and Health Resources .....	8
Additional Resources to Remember .....	9

# School Health Services Resources

## Missouri Manual for School Health

Guidelines for Managing a School Health Program

[health.mo.gov/living/families/schoolhealth/pdf/ManualForSchoolHealth.pdf](http://health.mo.gov/living/families/schoolhealth/pdf/ManualForSchoolHealth.pdf)



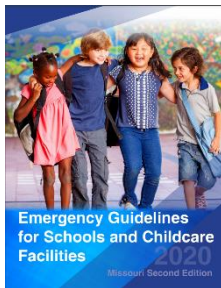
[www.cdc.gov/healthyschools](http://www.cdc.gov/healthyschools)



## Medication Administration in the School Setting

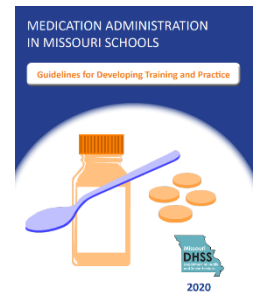
Medication Manual - with training for unlicensed personnel

[health.mo.gov/living/families/schoolhealth/pdf/MedicationManual.pdf](http://health.mo.gov/living/families/schoolhealth/pdf/MedicationManual.pdf)



## Emergency Guidelines for School staff

[health.mo.gov/living/families/schoolhealth/pdf/emergency-guidelines-for-schools-and-childcare.pdf](http://health.mo.gov/living/families/schoolhealth/pdf/emergency-guidelines-for-schools-and-childcare.pdf)



## Screening Guidelines

Vision -

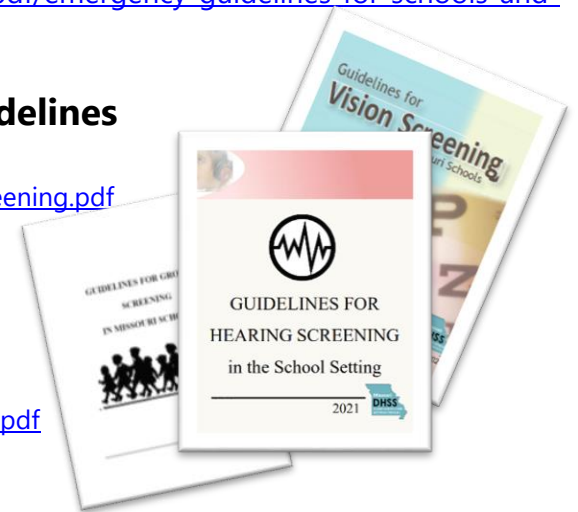
[health.mo.gov/living/families/schoolhealth/pdf/GuidelinesVisionScreening.pdf](http://health.mo.gov/living/families/schoolhealth/pdf/GuidelinesVisionScreening.pdf)

Hearing -

[health.mo.gov/living/families/schoolhealth/pdf/HearingScreeningGuidelines.pdf](http://health.mo.gov/living/families/schoolhealth/pdf/HearingScreeningGuidelines.pdf)

Growth-

[health.mo.gov/living/families/schoolhealth/pdf/GuidelinesForGrowth.pdf](http://health.mo.gov/living/families/schoolhealth/pdf/GuidelinesForGrowth.pdf)



## Edutainment and E-Learning Tools

Developed by Truman State University, the [Edutainment](#) tools are a variety of primers for working with elementary students to prepare them to participate in vision and hearing screenings, and tools for training after school staff to care for students with chronic health conditions, as well as other health education teaching tools

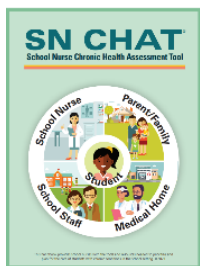
School Health Resource Guide for Best Practices

[chronicdisease.org/page/schoolhealth/](http://chronicdisease.org/page/schoolhealth/)



Resources for Nutrition, Physical Education and Physical Activity, and Management/Care of Chronic Conditions





## CHRONIC CONDITIONS

### SN CHAT – School Nurse Chronic Health Assessment Tool

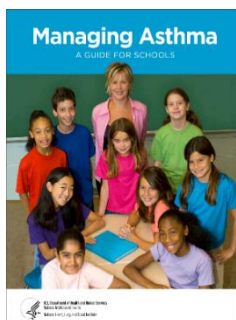
<https://health.mo.gov/living/families/schoolhealth/pdf/sn-chat.pdf>

The revised School Nurse Chronic Health Assessment Tool (SN CHAT®) helps school nurses gather information about students who have chronic health conditions. The tool provides guides for interviews and care plan development.

Fillable EAP templates: <https://health.mo.gov/living/families/schoolhealth/pdf/emergency-action-plan.pdf>

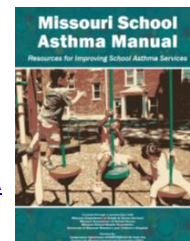
### Missouri Asthma Manual -

[health.mo.gov/living/healthcondiseases/chronic/asthma/pdf/asthmamanual.pdf](https://health.mo.gov/living/healthcondiseases/chronic/asthma/pdf/asthmamanual.pdf)



NIH Guidelines – Managing Asthma: A Guide for Schools

[https://www.nlm.nih.gov/files/docs/resources/lung/NACI\\_ManagingAsthma-508%20FINAL.pdf](https://www.nlm.nih.gov/files/docs/resources/lung/NACI_ManagingAsthma-508%20FINAL.pdf)



**CDC Asthma Management -** [www.cdc.gov/asthma/management.html](http://www.cdc.gov/asthma/management.html)

Creating an Asthma Friendly Environment –

[www.cdc.gov/healthyschools/asthma/strategies.htm](http://www.cdc.gov/healthyschools/asthma/strategies.htm)

### Back to School With Asthma

[www.lung.org/lung-health-diseases/lung-disease-lookup/asthma/living-with-asthma/creating-asthma-friendly-environments/back-to-school-with-asthma-toolkit](http://www.lung.org/lung-health-diseases/lung-disease-lookup/asthma/living-with-asthma/creating-asthma-friendly-environments/back-to-school-with-asthma-toolkit)



Asthma & Allergy Network for resources in working with students, staff and health care providers:

<http://www.allergyasthmanetwork.org/>

How to use an inhaler- <http://www.nlm.nih.gov/medlineplus/ency/patientinstructions/000041.htm>

### Managing Children with Diabetes in the School Setting



American Diabetes Association: Helping the Student with Diabetes Succeed:  
A Guide for School Personnel

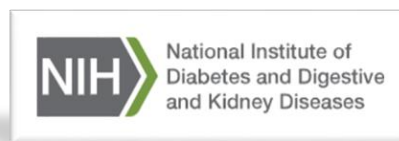
<https://www.diabetes.org/sites/default/files/2020-06/SchoolguidepdfMay2020.pdf>

School Training Modules - [www.diabetes.org/schooltraining](http://www.diabetes.org/schooltraining)

How to administer Glucagon - <http://pi.lilly.com/us/rglucagon-ppi.pdf>

Diabetes for School Personnel –

<https://www.niddk.nih.gov/health-information/health-communication-programs/ndep/health-care-professionals/school-guide/Pages/publicationdetail.aspx>



- School Nurse Toolkit
- Teacher & School Personnel Toolkit
- Family Toolkit
- Safe at School
- Section 504 Toolkit
- Health Provider Toolkit

<http://www.coloradokidswithdiabetes.org>





## Managing Children with Epilepsy in the School Setting



**Schools and Seizures** - <https://www.epilepsy.com/living-epilepsy/schools-and-seizure-preparedness>

Seizure First Aid and Safety: <https://www.epilepsy.com/living-epilepsy/seizure-first-aid-and-safety>

Recognizing different types of seizures, knowing what to do, and timing how long the seizure lasts

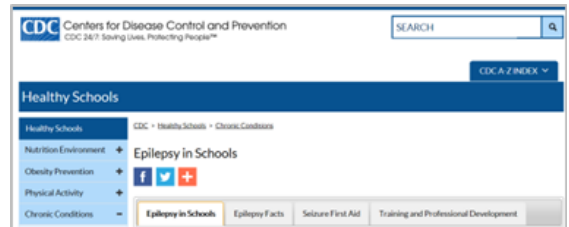
Diastat® - a diazepam rectal gel

Nayzilam® - a midazolam nasal spray

Valtoco® - a diazepam nasal spray

<https://www.epilepsy.com/learn/treating-seizures-and-epilepsy/seizure-rescue-therapies>

How to administer Diastat – <http://www.diastat.com/>



[www.cdc.gov/healthyschools/npa0/epilepsy](http://www.cdc.gov/healthyschools/npa0/epilepsy)

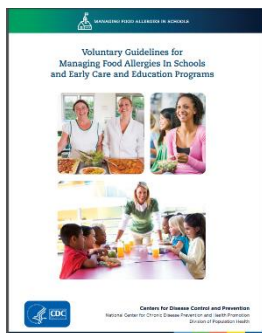
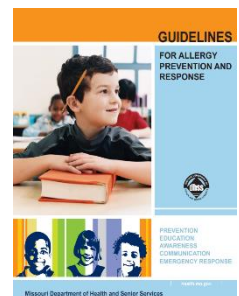
## Managing Children with Food Allergies in the School Setting

Missouri Food Allergy Manual – *Guidelines for Allergy Prevention and Response*

[health.mo.gov/living/families/schoolhealth/pdf/mo\\_allergy\\_manual.pdf](http://health.mo.gov/living/families/schoolhealth/pdf/mo_allergy_manual.pdf)

Student requiring Meal Modification medical Statement (DESE)

[dese.mo.gov/media/pdf/medical-statement-student-requiring-meal-modification](http://dese.mo.gov/media/pdf/medical-statement-student-requiring-meal-modification)



### Voluntary Guidelines for Managing Food Allergies in Schools and Early Care and Education Programs

[www.cdc.gov/healthyyouth/foodallergies/pdf/13\\_243135\\_A\\_Food\\_Allergy\\_Web\\_508.pdf](http://www.cdc.gov/healthyyouth/foodallergies/pdf/13_243135_A_Food_Allergy_Web_508.pdf)

CDC resource for practical information and recommendations for each of the five priority areas that should be addressed in each school's or ECE program's Food Allergy Management Prevention Plan

### Tool Kit for Managing Food Allergies in Schools

CDC's [tool kit](#) to help schools implement the Voluntary Guidelines for Managing Food Allergies in order to prevent and manage severe allergic reactions in schools. The tool kit includes tip sheets, training presentations, and podcasts for school superintendents, administrators, teachers and par educators, school nutrition professionals, school transportation staff, and school mental health professionals.



**Food Allergy and Anaphylaxis Network** has online training and resources

[www.foodallergy.org](http://www.foodallergy.org)

Practical Teaching tools : [www.Allergyhome.org](http://www.Allergyhome.org)



To learn about the free EpiPen for schools program:

<http://www.epipen4schools.com/>

<https://www.auvi-q.com>



# Managing Communicable Diseases in the School Setting

## DHSS Manual- *Prevention and Control of Communicable Diseases*

[https://health.mo.gov/living/families/schoolhealth/pdf/Communicable\\_Disease.pdf](https://health.mo.gov/living/families/schoolhealth/pdf/Communicable_Disease.pdf)

Communicable Diseases:

<http://health.mo.gov/living/healthcondiseases/communicable/index.php>

Locating your public health department - <http://health.mo.gov/living/lpha/lphas.php>



## Blood borne Pathogens training tools -

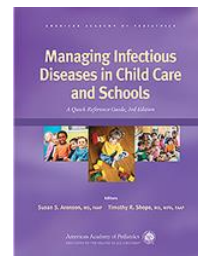
<http://health.mo.gov/living/families/schoolhealth/pdf/GuidelinesForBloodbornePathogens.pdf>

## *Managing Infectious Diseases in Child Care and Schools- 5<sup>th</sup> edition*

American Academy of Pediatrics reference manual (available for purchase)

[https://shop.aap.org/product-](https://shop.aap.org/product-list/?q=managing%20infectious%20diseases%20in%20child%20care%20#sort=relevance&page=1&q=managing%20infectious%20diseases%20i)

[list/?q=managing%20infectious%20diseases%20in%20child%20care%20#sort=relevance&page=1&q=managing%20infectious%20diseases%20in%20child%20care](https://shop.aap.org/product-list/?q=managing%20infectious%20diseases%20in%20child%20care%20#sort=relevance&page=1&q=managing%20infectious%20diseases%20in%20child%20care)



## Immunization Resources

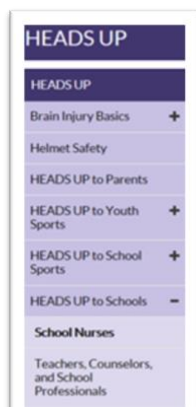


<http://health.mo.gov/living/wellness/immunizations>



<https://health.mo.gov/living/wellness/immunizations/showmevax/index.php>

Resources & Tools: <http://www.cdc.gov/vaccines/schedules/hcp/child-adolescent.html>

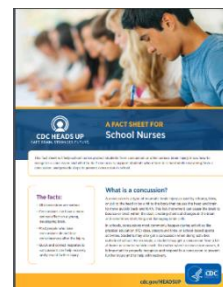


## Concussion Awareness for Health Services Staff

<http://www.cdc.gov/headsup/schools/nurses.html>

<http://www.cdc.gov/headsup/schools/index.html>

<http://www.cdc.gov/headsup/youthsports>

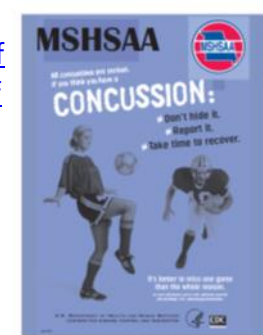


## MSHSAA

[www.mshsaa.org/resources/pdf/ConcussionPacketHB300\\_Final.pdf](http://www.mshsaa.org/resources/pdf/ConcussionPacketHB300_Final.pdf)

<http://www.mshsaa.org/resources/pdf/emergencyPlanning.pdf>

<http://www.anyonecansavealife.org>



# Managing Children with Mental Health concerns or Autism in the School Setting



For Autism info: <http://www.cdc.gov/ncbddd/autism/facts.html>

Autism Guidelines - <http://www.autismguidelines.dmh.mo.gov/pdf/Guidelines.pdf>

CDC information on ADHD - <http://www.cdc.gov/ncbddd/adhd/>

MO Department of Mental Health – <https://dmh.mo.gov/>



SAMHSA - Substance Abuse and Mental Health Services Administration  
Best-practice resources in Mental Health and Prevention:

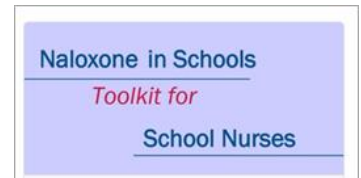
<http://www.samhsa.gov>

## Drug Abuse:

NASN resources -

<https://www.nasn.org/nasn-resources/resources-by-topic/drugs-abuse>

<https://www.nasn.org/advocacy/professional-practice-documents/position-statements/ps-naloxone>

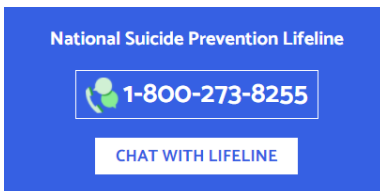


Smart Moves Smart Choices - <http://smartmovesmartchoices.org/>

Stop Medicine Abuse - <http://stopmedicineabuse.org/tools-to-take-action/school-nurses>

National Library of Medicine: <http://medlineplus.gov>

## Suicide Prevention:



**Suicide Prevention Resource Center**

About Suicide Effective Prevention Resources & Programs Training News & Highlights Organizations

<https://www.sprc.org/>

## Head Lice and Bed Bugs

Head lice PowerPoint - [www.health.mo.gov/living/families/schoolhealth/ppt/HEADLICE.ppt](http://www.health.mo.gov/living/families/schoolhealth/ppt/HEADLICE.ppt)



Centers for Disease Control and Prevention  
CDC 24/7: Saving Lives. Protecting People™

Head Lice Information for Schools

<https://www.cdc.gov/parasites/lice/head/schools.html>

For Parents:

<https://kidshealth.org/en/parents/head-lice.html>



<https://www.epa.gov/bedbugs>

[www.epa.gov/managing-pests-schools/bed-bugs-and-schools](http://www.epa.gov/managing-pests-schools/bed-bugs-and-schools)

Teaching tool: [www.epa.gov/sites/production/files/documents/BB\\_in\\_Schools\\_May\\_2012.pdf](http://www.epa.gov/sites/production/files/documents/BB_in_Schools_May_2012.pdf)



Return to table of contents

(02/2022)

# Child Abuse and Neglect Hotline

**Child Abuse and Neglect Hotline Unit**  
**1-800-392-3738**

<http://dss.mo.gov/cd/can.htm>

On line training: **Missouri Child Abuse and Neglect Mandated Reporter Training**  
<http://protectmokids.com>

Missouri Child Abuse Law Section 210.110 RSMo –

<https://revisor.mo.gov/main/OneSection.aspx?section=210.110&bid=47877&hl=>



## Student Privacy Guidance

<http://www2.ed.gov/programs/promiseneighborhoods/datasharingtool.pdf>

This tool kit is designed to simplify the complex concepts of FERPA and addresses some of the common HIPAA/FERPA myth

[www.networkforphl.org/wp-content/uploads/2019/12/Data-Privacy-in-School-Nursing-Navigating-the-Complex-Landscape-of-Data-Privacy-Laws-Part-1-1.pdf](http://www.networkforphl.org/wp-content/uploads/2019/12/Data-Privacy-in-School-Nursing-Navigating-the-Complex-Landscape-of-Data-Privacy-Laws-Part-1-1.pdf)



## Tools for Health Education

<http://kidshealth.org/>

## Missouri Department of Health and Senior Services



School Health Program resources:

<http://health.mo.gov/living/families/schoolhealth/index.php>

Manuals, guidelines and publications: <http://health.mo.gov/living/families/schoolhealth/pubs.php>

## Other Resources



[www.schoolnurselink.com](http://www.schoolnurselink.com)

The School Nurse Link connects school nurses with information about the Medicaid/MoHealthNet Managed Care health plans in Missouri and resources.

Missouri State Board of Nursing –  
<http://pr.mo.gov/nursing.asp>

National Association of School Nurses –  
[www.nasn.org](http://www.nasn.org)

NURSYS-Look up, verify and monitor nurse licenses  
<https://www.nursys.com/>

Missouri Association of School Nurses –  
<http://missourischoolnurses.org/>

Missouri Kids Count - <http://mokidscount.org/>

Coordinated School Health Coalition - <http://www.healthykidsmo.org/>

### Education tools for staff in afterschool programs:

Asthma - <http://ccox.sites.truman.edu/2019/03/12/asthma-education-actions-afterschool-programs-activities-3/>

Seizures - <http://ccox.sites.truman.edu/2019/03/12/seizure-education-actions-afterschool-programs-activities-2/>

Sickle-Cell disease - <http://ccox.sites.truman.edu/2019/03/12/sickle-cell-disease-education-actions-afterschool-programs-activities/>

Allergy - <http://ccox.sites.truman.edu/2019/04/03/allergy-education-actions-afterschool-programs-activities-3/>

Diabetes - <http://ccox.sites.truman.edu/2019/04/03/diabetes-education-actions-afterschool-programs-activities-3/>

Missouri Student Survey - <https://dmh.mo.gov/alcohol-drug/missouri-student-survey>

Missouri Department of Mental Health Reports & Statistics: *The Missouri Student Survey* (MSS) is conducted in even-numbered years to track risk behaviors of students in grades 6-12 attending public schools in Missouri. Participation in the survey is completely optional. The survey includes questions on alcohol, tobacco, and drug use and other behaviors that endanger health and safety.

## Medication and Health Resources

### MedlinePlus:

[www.nlm.nih.gov/medlineplus/](http://www.nlm.nih.gov/medlineplus/) - Consumer health resource produced by the National Library of Medicine written at a consumer level and available in Spanish and over 40 other languages, and includes information about both prescription drugs and over-the-counter medications, including side effects, dosage information, special precautions and more. The "Herbs and Supplements" section is one of the few sources of evidence based information on these substances.

### DailyMed:

<https://dailymed.nlm.nih.gov/> - DailyMed is the official provider of FDA label information, and provides up-to-date look-up and printable medication content found in package inserts.

### Drug Information:

<https://druginfo.nlm.nih.gov/drugportal/> - The National Library of Medicine Drug Information portal for quick access to drug information.

### National Center for Complementary and Integrative Health:

<https://nccih.nih.gov>

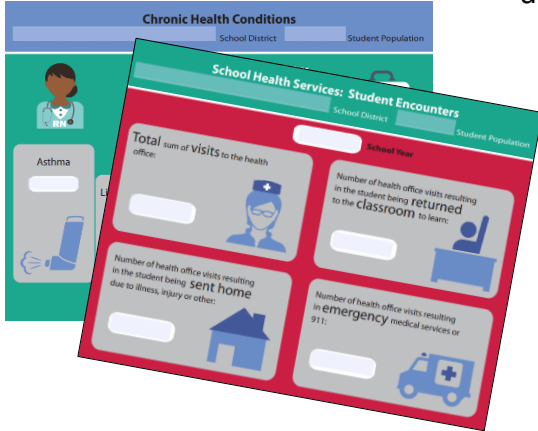
NCCIH is the Federal Government's lead agency for research on diverse medical and healthcare systems, practices and products that are not generally considered part of conventional medicine.



## Additional Resources to Remember

<http://health.mo.gov/atoz/index.php>

MO Department of Health web site, Topics A-Z connects to a wide variety of topics, information and resources



INFOGRAPHIC templates for sharing your district data:  
[health.mo.gov/living/families/schoolhealth/resources.php](http://health.mo.gov/living/families/schoolhealth/resources.php)  
(Chronic Health Conditions, School Health Services Student Encounters)



[www.cdc.gov/healthyschools/chronic\\_conditions/pdfs/2017\\_02\\_15-CHC-and-Academic-Achievement\\_Final\\_508.pdf](http://www.cdc.gov/healthyschools/chronic_conditions/pdfs/2017_02_15-CHC-and-Academic-Achievement_Final_508.pdf)

This brief describes the relationship between certain chronic health conditions and academic achievement, based on a review of the scientific literature. These include seizure disorders/epilepsy, asthma, diabetes, poor oral health conditions, and food allergies as chronic health conditions that are commonly observed among school-aged youth.

[www.cdc.gov/healthyschools/chronic\\_conditions/pdfs/2017\\_02\\_15-How-Schools-Can-Students-with-CHC\\_Final\\_508.pdf](http://www.cdc.gov/healthyschools/chronic_conditions/pdfs/2017_02_15-How-Schools-Can-Students-with-CHC_Final_508.pdf)

This brief describes strategies for school-based management of students' chronic health conditions, for example, seizure disorders/epilepsy, asthma, diabetes, poor oral health, and food allergies.



[www.cdc.gov/healthyschools/chronic\\_conditions/pdfs/2017\\_02\\_15-FactSheet-RoleOfSchoolNurses\\_FINAL\\_508.pdf](http://www.cdc.gov/healthyschools/chronic_conditions/pdfs/2017_02_15-FactSheet-RoleOfSchoolNurses_FINAL_508.pdf)

The healthcare needs of students with a chronic health condition may be complex and continuous. The school nurse is often the only healthcare provider in a school for both emergencies and daily management of chronic health conditions. A full-time school nurse and dependable funding are essential to achieve high quality health services and to meet student health needs.

