

ScreenBeam™ Mini 2 Kit

Catalog# SBWD60KIT02

ScreenBeam Mini 2 Model# SBWD60A

ScreenBeam USB Transmitter 2 Model# SBT200DI



This Installation Guide provides step-by-step instructions on how to set up your ScreenBeam Mini 2 Kit. We'll show you how to:

- A. Install the application software 1**
- B. Set up the ScreenBeam Mini 2 receiver. 3**
- C. Pair the ScreenBeam USB Transmitter 2
and ScreenBeam Mini 2 receiver. 4**
- D. Set wireless display preferences. 6**

A. Install the application software

- 1 Download the ScreenBeam Wireless Display software to your PC or laptop from www.actiontec.com/products/sbupdate.php.
- 2 Click on **ScreenBeam_setup.exe**.

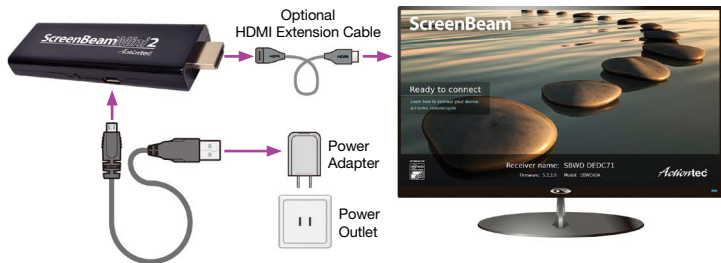


ScreenBeam_
Setup.exe

- 3 Follow the onscreen instructions, and complete the installation.

B. Set up the ScreenBeam Mini 2 receiver

- 1 Remove the receiver, power adapter, USB cable, and HDMI extension cable from the box.
- 2 Plug the small male connector of the USB cable to the receiver's micro USB port labeled **Power**.
- 3 Plug the receiver into an available HDMI port on your HDTV.
Note: If the receiver cannot reach the HDMI port on your TV, use the provided HDMI extension cable to connect the receiver.
- 4 Plug the large male connector of the USB cable to the power adapter and plug the power adapter into a power outlet.
- 5 Turn on your TV and switch the input source until you see the **Ready to Connect** screen.



C. Pair the transmitter and receiver

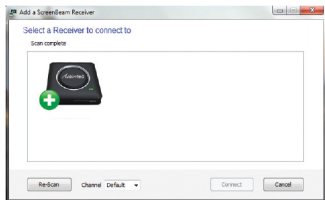
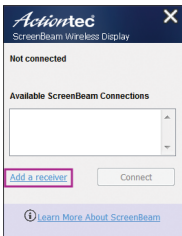
- 1 Plug the ScreenBeam USB Transmitter 2 into a USB port on your PC or laptop.



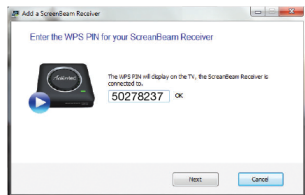
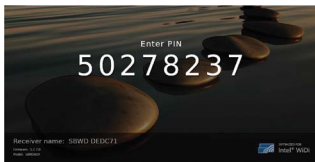
- 2 Launch the ScreenBeam Wireless Display software by clicking the shortcut on the Windows desktop.



- 3 Click **Add a Receiver** on the control panel of the software, and find your receiver name. This is the same name that appears on the **Ready to Connect** screen on the monitor or projector.



- 4 A Personal Identification Number (PIN) appears on the screen. Enter the PIN in the software, and click **Next** to pair your transmitter and receiver.



D. Setting the wireless display preferences

- 1 Right-click on the ScreenBeam icon from the system tray of the laptop/PC's desktop. When the options menu appears, select Preferences.
- 2 Change the setting with your preferences.

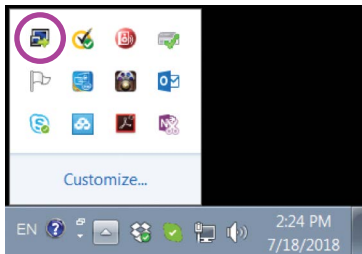
A. Language

Select the language of the application software.

B. Wireless Channel

The wireless channel on which ScreenBeam operates can be changed here. “Auto” is recommended; this setting automatically selects the clearest channel available. To manually select a channel:

1. Make sure your laptop/PC is disconnected from the ScreenBeam receiver.
2. Select a desired channel, and click **OK**.
3. Reconnect the ScreenBeam receiver to your laptop/PC. The selected channel will be used.



C. Display Content

This allows ScreenBeam to be configured for an optimal viewing experience. Select **Video Playback** for better video display. Select **Presentation/Slideshow** for a better still image display.

D. Adjust Screen Size

Use the slider to adjust the size of the picture on the HDTV monitor. Continue adjusting until the entire picture appears on the HDTV screen.

ScreenBeam Wireless Display Preferences

A Language: English

B Wireless Channel: Auto

C Display Content: Video Playback

D Adjust Screen: [-] [slider] [+]

E Enable Push Button pairing

F Enable Low Resolution mode

[Restore defaults](#)

OK

Cancel

D. Setting wireless display preferences, cont.

E. Enable Push Button pairing

Selecting this option allows devices or laptops to connect to your ScreenBeam receiver without having to enter a PIN.

F. Enable Low Resolution mode

Selecting this option transmits a lower resolution picture to the monitor, providing a smoother viewing experience.

Visit actiontec.zendesk.com for more information

• User Manual • Troubleshooting Tips • FAQs

Support: (888) 436-0657

Support email: support@actiontec.zendesk.com

P/N 0530-0816-000

Actiontec® | **ScreenBeam**™

© 2017 All rights reserved. Actiontec and the Actiontec logo are registered trademarks, and ScreenBeam is a trademark of Actiontec Electronics, Inc. All other names are properties of their respective owners. Specifications subject to change without notice. 072617

screenbeam.com