

SD NPS Project Management System

The Tracker Program

SD DENR
October, 2013

Table of Contents

	Page
1.0	Introduction..... 1
1.1	Understanding the PIP Budget and Milestones 1
2.0	Getting Started 4
2.1	Main Menu..... 4
2.2	Password 5
2.3	User Profile 5
3.0	Data Entry 6
3.1	Producer Information 7
3.2	BMP Information 8
3.3	Mapping 10
3.4	Practice Information..... 15
3.5	Practice Bill..... 15
3.6	MBE/WBE..... 18
3.7	Milestone Information 19
3.8	Livestock Information..... 20
3.9	Pollution Information..... 20
4.0	Personnel Salaries 21
4.1	Salaries 21
4.2	Salary Paycheck 22
5.0	Non-Salary Expenses 23
5.1	Non-Salary Group 23
5.2	Non-Salary Group Bill..... 24
6.0	Assessment Goals 25
7.0	Voucher..... 25
7.1	Selecting Bills for Voucher..... 27
7.2	Voucher Summary 27
7.3	Finalizing Voucher..... 29
7.4	Voucher Details 30
8.0	GRTS 31
9.0	Project Summary..... 35
10.0	Trouble Shooting 36



List of Tables

Table	Page
1 Example PIP Budget	2
2 Example PIP Milestones Table	3
3 South Dakota List of Project BMPs.....	9

List of Figures

Figure	Page
1 Example Allocated Funds from Tracker.....	2
2 Example BMP Funding from Tracker	2
3 Example Milestones in Tracker	3
4 Login Page	4
5 Main Menu.....	4
6 Password Selection Page.....	5
7 User Profile Page	5
8 Project Selection Page.....	6
9 Project Data Page.....	6
10 Producer Information Page	7
11 BMP Information Page Before Save.....	8
12 BMP Information Page After Save	9
13 BMP Map It	10
14 Placing a BMP in Map It	11
15 Google Maps Opening Page	12
16 Google Maps “What’s here”	12
17 BMP Map It with Point Selected	13
18 Moving a Point in Map It.....	14
19 Practice Information Page.....	15
20 Practice Bill Page.....	16
21 MBE/WBE Spreadsheet.....	18
22 Milestone Summary Page	19
23 Milestone Completion Page.....	19
24 Livestock Management Page	20
25 NPS Reduction Page	21
26 Personnel Salaries Page	21
27 Paycheck Page	22
28 Non-salary Group Example	23
29 Non-salary Group Bill.....	24
30 Assessment Goals	25
31 New Voucher	26
32 Unfinalized voucher page	26
33 Voucher Pick List	27
34 Voucher Print-out.....	28
35 Finalizing Voucher Pop-up.....	29
36 Finalized Voucher Page	30
37 Voucher Details	30
38 GRTS Page.....	31
39 Saving a GRTS Report.....	32
40 Create GRTS Word Doc	32
41 Project Summary Report.....	35

User Guide to the SD NPS Project Management Internet Program (Tracker)

1.0 Introduction

The SD NPS Project Management System was developed to provide more consistent 319 project management for South Dakota. Several data entry systems currently being used by project managers and other states were reviewed before developing the system. The criteria selected for the South Dakota program were:

- easy to enter and retrieve useful project information
- ability for coordinators to enter information at their office
- provide a standard tracking system that gives coordinators and project officers understandable project status information

An internet based program was selected for development based on the criteria and other system requirements.

The program requires entry of information from the Project Implementation Plans (PIP) by the Department of Environment and Natural Resources (DENR) project officer. After this is accomplished, the coordinator enters information as the project progresses.

1.1 Understanding the PIP Budget and Milestones

The Tracker will be set up based upon the budget and Milestones from the PIP. Therefore it is important to know where in the PIP's budget the work or expenses are to be applied. The next few figures and tables show examples of a budget and how it translates to Tracker.

Table 1: Example PIP Budget.

Item	Total	319 EPA	EQIP	Consolidated	City of Mudville	Local/InKind
Personnel/Administrative						
Project Coordinator Salary	\$96,000.00	\$90,000.00			\$6,000.00	
Rent	\$18,000.00	\$0.00			\$18,000.00	
Travel	\$6,000.00	\$6,000.00				
Supplies	\$2,550.00	\$1,000.00			\$1,550.00	
Postage	\$500.00				\$500.00	
Personnel/Administrative Totals	\$123,050.00	\$97,000.00			\$26,050.00	
Objective 1: BMP implementation						
Task 1: Ag Waste Systems	\$400,000.00	\$90,000.00	\$150,000.00	\$60,000.00		\$100,000.00
Task 2: Riparian Restoration/Protection	\$40,000.00	\$24,000.00				\$16,000.00
Objective 1 Totals	\$440,000.00	\$114,000.00	\$150,000.00	\$60,000.00		\$116,000.00
Totals	\$563,050.00	\$211,000.00	\$150,000.00	\$60,000.00	\$26,050.00	\$116,000.00
Percent of Grant		51%				49%

As seen in Figure 1, totals from Table 1 match that given for each funding source in the “Total Amount” and “Amount Allocated” columns. Figure 1 is from the Tracker “Project Summary” “Funds Allocated” section.

<u>Fund Name</u>	<u>Source</u>	<u>Reimbursable</u>	<u>Matching</u>	<u>Total Amount</u>	<u>Amount Allocated</u>	<u>Amount Used</u>
319	Federal	Y	N	\$211,000.00	\$211,000.00	\$21,241.05
City of Mudville	City	N	Y	\$26,050.00	\$26,050.00	\$2,126.00
Consolidated	State	Y	Y	\$60,000.00	\$60,000.00	\$31,099.95
EQIP	Federal	N	N	\$150,000.00	\$150,000.00	\$110,000.00
Local cash	Local	N	Y	\$116,000.00	\$116,000.00	\$53,733.00
Local In-kind	Local	N	Y	\$0.00	\$0.00	
Total				\$563,050.00	\$563,050.00	\$218,200.00

Figure 1: Example Allocated Funds from Tracker.

Figure 2 shows BMP funding for this project. Again, numbers in the allocated column match that under Objective 1 in Table 1. This is the same for the salary and non-salary sections in Tracker. Every section in Tracker will correlate to the representative section in the PIP budget.

<u>BMP</u>		<u>Allocated</u>	<u>Used</u>	<u>Available</u>
01-T1 - Ag Waste System	319	\$90,000.00	\$15,600.05	\$74,399.95
	Consolidated	\$60,000.00	\$31,099.95	\$28,900.05
	EQIP	\$150,000.00	\$110,000.00	\$40,000.00
	Local cash	\$100,000.00	\$52,233.00	\$47,767.00
	Local In-kind	\$0.00	\$0.00	\$0.00
01-T2 - Riparian Restoration/Protection	319	\$24,000.00	\$4,500.00	\$19,500.00
	Local cash	\$16,000.00	\$1,500.00	\$14,500.00
	Local In-kind	\$0.00	\$0.00	\$0.00
Total For All BMP's		\$440,000.00	\$214,933.00	\$225,067.00

Figure 2: Example BMP Funding From Tracker.

The same principles that applied to the budget also apply to the milestones for a project. All the milestones listed in Table 2 for the project show up in the milestones for Tracker in Figure 3. The years milestones are expected to be completed will also be entered in Tracker as seen in Figure 23 and 24.

Table 2: Example PIP Milestones Table.

Goal/Objective/Task	Quantity	Year 1	Year 2	Year 3
Objective 1. BMP Installation				
Task 1: Ag Waste Systems				
Engineering Services	2	1	1	
System Installation	2		1	1
Task 2: Riparian Restoration/Protection				
Riparian Restoration/Protection-ac	50	10	20	20

BMP Milestone Information			
<u>BMP</u>	<u>Unit</u>	<u>Total Expected</u>	<u>Total Implemented</u>
Ag Waste System	Engineering -	2	2
Ag Waste System	Waste Management System - 312	2	2
Riparian Restoration/Protection	Riparian Area Management (ac) -	50	17

Figure 3: Example Milestones in Tracker.

If there is a question on where to put an expense, the first thing that should be looked at is the PIP budget or the text in the PIP. Sometimes it may be necessary to go into the description of BMPs in section 3.1 of the PIP to find the appropriate task or product. Once it is determined what part of the Budget the expense in question is for, then it may be help full to pull up the Project summary page in Tracker for the project. When the sections are matched up, enter the expense so that the funds come out of the correct line item.

2.0 Getting Started

Go to: <https://apps.sd.gov/applications/NR88BMPExpenseTracking/secure/Login.aspx>. Enter a user name (this is provided by the assigned DENR project officer). The default password for all user names is “Password”. Figure 4 shows the login page. Remember that the Username and Password are case sensitive.

SD NPS Project Management System



Username:

Password:

Figure 4: Login Page.

2.1 Main Menu

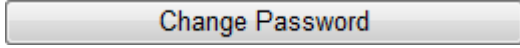
Once successfully logged in, the main menu (Figure 5) will appear. The main menu allows users to change their password, update their profile, view project data, or exit the program

SD NPS Project Management System



Figure 5: Main Menu.

2.2 Password

To change the password, click , fill in the Password Selection page (Figure 6), then click the save button. If the password is lost or forgotten, the DENR project officer can reset it to “Password.”

Change Password

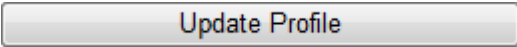
Please Type Current Password

Type New Password
*Must be at least six characters

Re-Type New Password

Figure 6: Password Selection Page.

2.3 User Profile

The coordinator profile will be entered by the DENR project officer from the Project’s Project Implementation Proposal (PIP). If this data needs to be updated, it can be done by clicking the  in Figure 5. Update the profile when changes to the information shown in Figure 7 occur.

Update User Profile for Joe Officer

Address

City

State

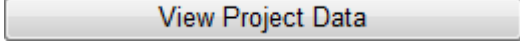
Zip Code

Phone #

Email

Figure 7: User Profile Page.

3.0 Data Entry

To access project information, select  on the main menu. If the user has more than one project, a screen similar to the one shown in Figure 8 will be displayed.

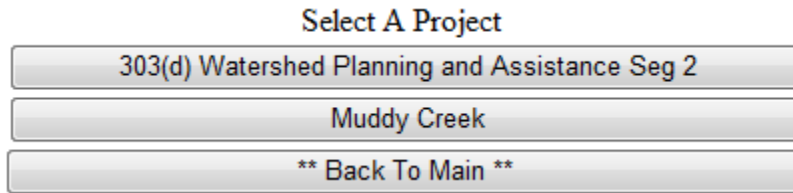
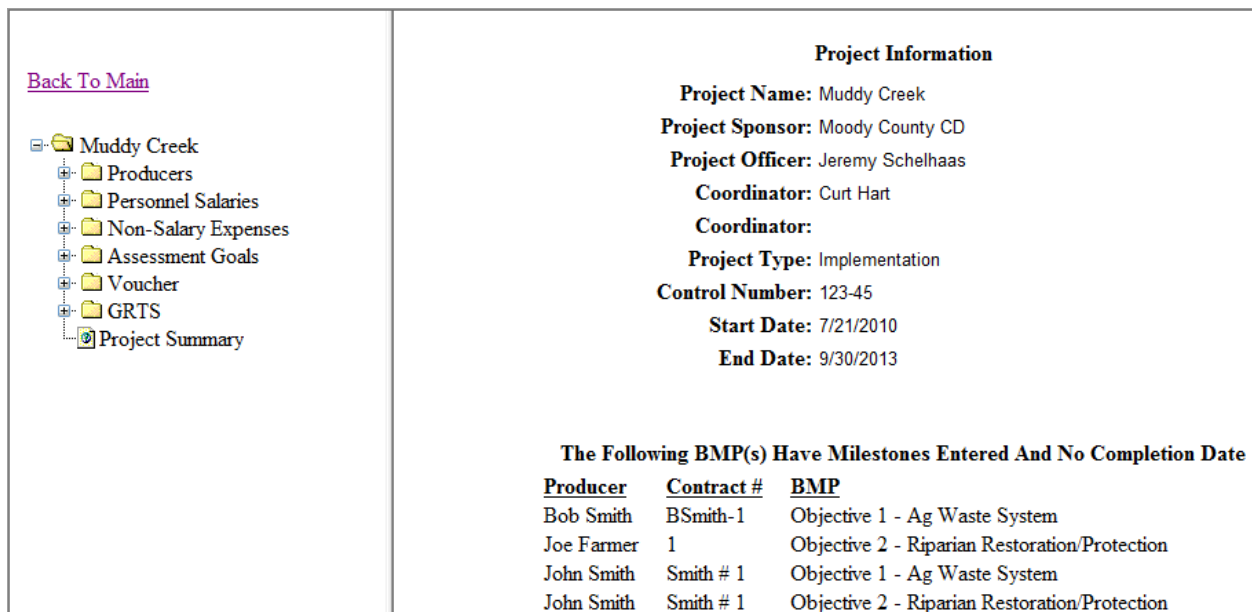


Figure 8: Project Selection Page.

After selecting a project from the project selection screen, or if there is only one project, the project data page (Figure 9) will open. (Only assessment projects, or projects with assessment components, have the “Assessment Goals” folder.)



[Back To Main](#)

- Muddy Creek
 - Producers
 - Personnel Salaries
 - Non-Salary Expenses
 - Assessment Goals
 - Voucher
 - GRTS
 - Project Summary



Project Information

Project Name: Muddy Creek
Project Sponsor: Moody County CD
Project Officer: Jeremy Schelhaas
Coordinator: Curt Hart
Coordinator:
Project Type: Implementation
Control Number: 123-45
Start Date: 7/21/2010
End Date: 9/30/2013


The Following BMP(s) Have Milestones Entered And No Completion Date

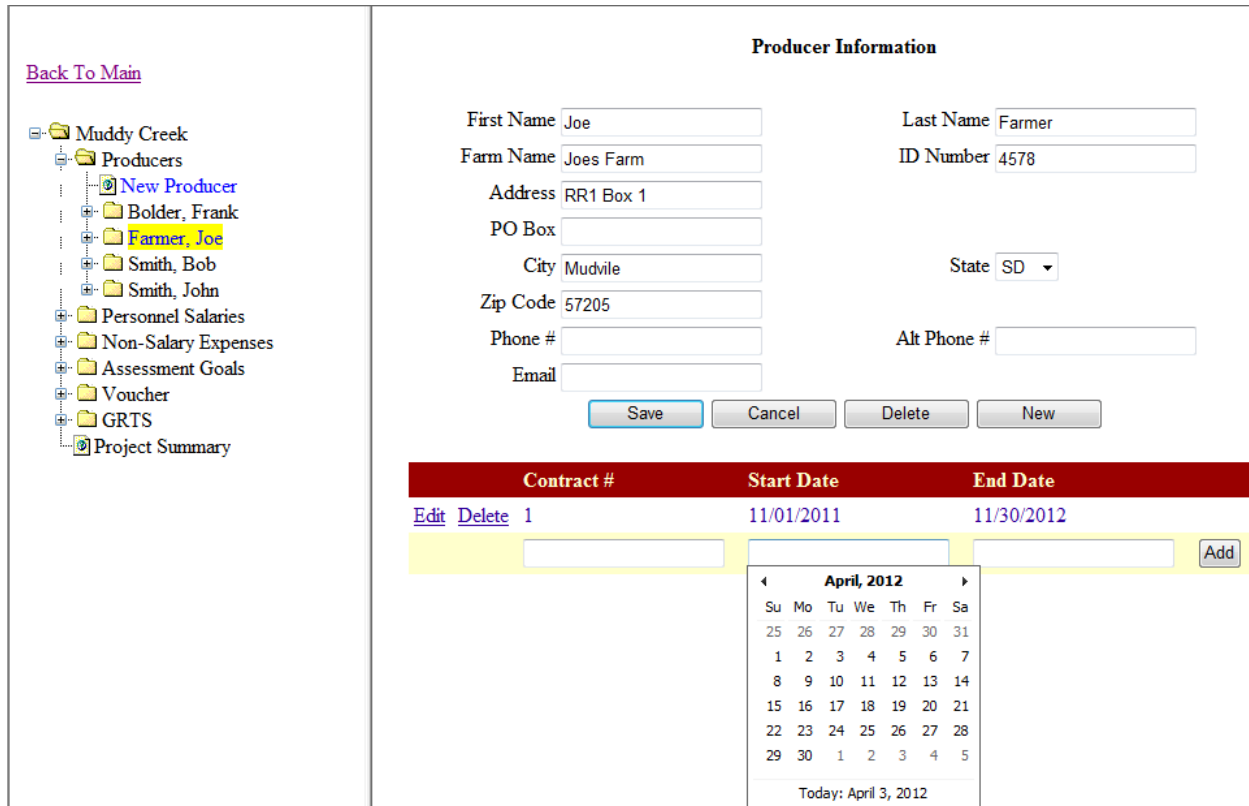
<u>Producer</u>	<u>Contract #</u>	<u>BMP</u>
Bob Smith	BSmith-1	Objective 1 - Ag Waste System
Joe Farmer	1	Objective 2 - Riparian Restoration/Protection
John Smith	Smith # 1	Objective 1 - Ag Waste System
John Smith	Smith # 1	Objective 2 - Riparian Restoration/Protection

Figure 9: Project Data Page.

The project data screen provides the ability to review general information about a project, and select the type of information to be entered or viewed. To expand any of the folders the  must be clicked; to minimize the folders, click the .

3.1 Producer Information

To enter a new producer, click on the **+** in front of the “Producers” file. Then click on the blue “**New Producer.**” To view or change information about a current producer, click on the name of the producer (Figure 10). After the producer information is entered, click the  button.



Producer Information

First Name Last Name

Farm Name ID Number

Address

PO Box

City State

Zip Code

Phone # Alt Phone #

Email

Contract #	Start Date	End Date
Edit Delete 1	11/01/2011	11/30/2012
<input type="text"/>	<input type="text"/>	<input type="text"/>

April, 2012

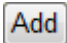
Su	Mo	Tu	We	Th	Fr	Sa
25	26	27	28	29	30	31
1	2	3	4	5	6	7
8	9	10	11	12	13	14
15	16	17	18	19	20	21
22	23	24	25	26	27	28
29	30	1	2	3	4	5

Today: April 3, 2012

Figure 10: Producer Information Page.

Contracts with the producer can be entered after saving the producer information. The **Contract #** is assigned by the coordinator. The contract number can be any desired combination of numbers and/or letters up to 50 characters. The calendar seen in Figure 10 will appear when either date text box is clicked. Click the month and year at the top of the calendar to select a different month; click the year at the top of that calendar to select a different year (these calendars can be seen here to the right). After selecting the desired year, month, and day, the calendar will close and the date will be entered in the text box.



After entering information in all of the blanks, click the  button to create a new contract folder. The contract number, start date, and end date can be edited if any of the information changes.

3.2 BMP Information

BMP information is located in subfolders under the producer. To add a new BMP, click on the blue “[New BMP](#)” text. Then select the contract and type of BMP the producer is implementing from the dropdowns shown in Figure 8. The BMP dropdown can be any combination of BMPs shown in Table 3 (page 9) that have been put in the PIP. Multiple BMPs from this list can be implemented by a producer. GRTS required load reductions and BMP locations are also entered here. If the BMP to be installed is any of the four “**GRTS Required**” restoration items shown in Figure 11 & 12, enter the amount installed in the appropriate box or boxes. To save the information, a contract and a BMP must be selected. After saving, the BMP and contract can only be deleted by the DENR project officer. If a BMP is deleted all the information saved under it will also be deleted.

[Back To Main](#)

- Muddy Creek
 - Producers
 - [New Producer](#)
 - Bolder, Frank
 - Farmer, Joe
 - [New BMP](#)
 - Contract 1 - Objective 1 -
 - Contract 1 - Objective 2 -
 - Smith, Bob
 - Smith, John
 - Personnel Salaries
 - Non-Salary Expenses
 - Assessment Goals
 - Voucher
 - GRTS
 - Project Summary

Best Management Practice
New

Select Contract

BMP

Completion Date

Latitude Longitude

Location

303d Assist

GRTS Required

Wetlands Restored Acres Wetlands Created Acres

Shoreline Restoration Feet Stream Channel Stabilized Feet

Save Cancel

Figure 11: BMP Information Page Before Save.

An important item to note here is that a Completion Date is not needed at the time the BMP is entered into Tracker, but will need to be entered when the BMP is actually installed. The completion date here will be used on the GRTS report for determining when load reductions and milestones were completed for the Project.

Table 3- South Dakota List of Project BMPs

#	BMP	#	BMP
1	Ag Waste System	15	Nutrient Management
2	Bank Stabilization	16	Parking Lots/Street Sweeping
3	BMP Development	17	Perennial Vegetation
4	Clean Water Diversions	18	Plan Development
5	Conservation Tillage	19	Reporting
6	Critical Area Planting	20	Riparian Area Management (RAM)
7	Grassed Waterways	21	Riparian Restoration/Protection
8	Grazing Management	22	Sediment Traps
9	In-Lake Alum Treatment	23	Septic System
10	In-Lake Bio-manipulation	24	Storm Water Management
11	In-Lake Dredging	25	Tree/Shrub Establishment
12	Information & Education	26	Water Quality Monitoring
13	Irrigation Water Management	27	Wetland Constructed
14	Mapping	28	Wetland Restoration

Tasks that the BMP information page provides the ability to enter are:

- Retrieve BMP location
- Practice information for the BMP
- Milestones for tasks completed
- Information about livestock managed by the BMP
- Nonpoint source reductions

The livestock management option only pertains to Ag Waste Systems, including Clean Water Diversions, and Managed Grazing Systems. To select any of these options, click the desired button at the bottom of the BMP information page (Figure 12).

[Back To Main](#)

- Muddy Creek
 - Producers
 - New Producer
 - Bolder, Frank
 - Farmer, Joe
 - New BMP
 - Contract: 1 - Objective 1 - Ag Waste Sy
 - Contract: 1 - Objective 2 - Riparian Rest
 - Smith, Bob
 - Smith, John
 - Personnel Salaries
 - Non-Salary Expenses
 - Assessment Goals
 - Voucher
 - GRTS
 - Project Summary

Best Management Practice

Select Contract: Contract Number: 1 - Start Date: 11/1/2011

BMP: Objective 1 - Ag Waste System

Completion Date: 12/12/2011

Latitude: 43.538096 Longitude: -96.955376

Location:

303d Assist

GRTS Required

Wetlands Restored Acres Wetlands Created Acres

Shoreline Restoration Feet Stream Channel Stabilized Feet

Figure 12: BMP Information Page After Save.

3.3 Mapping

Locating the installed BMPs is important to determine impacted lakes and streams. This includes reporting to EPA through GRTS and other required reports. Locating the points also makes it easier for creating maps for Projects, and other custom reports the Project may desire.

There are two methods that can be used to locate a BMP.

Method 1- Using “Map It”:

The **Map It** button (shown in Figure 12) only appears after a BMP has been saved (clicking **Save** in Figure 11). Clicking this button will open a map of South Dakota. When the map appears, as seen in Figure 13, it will display all BMPS for all projects zoomed to the state level.

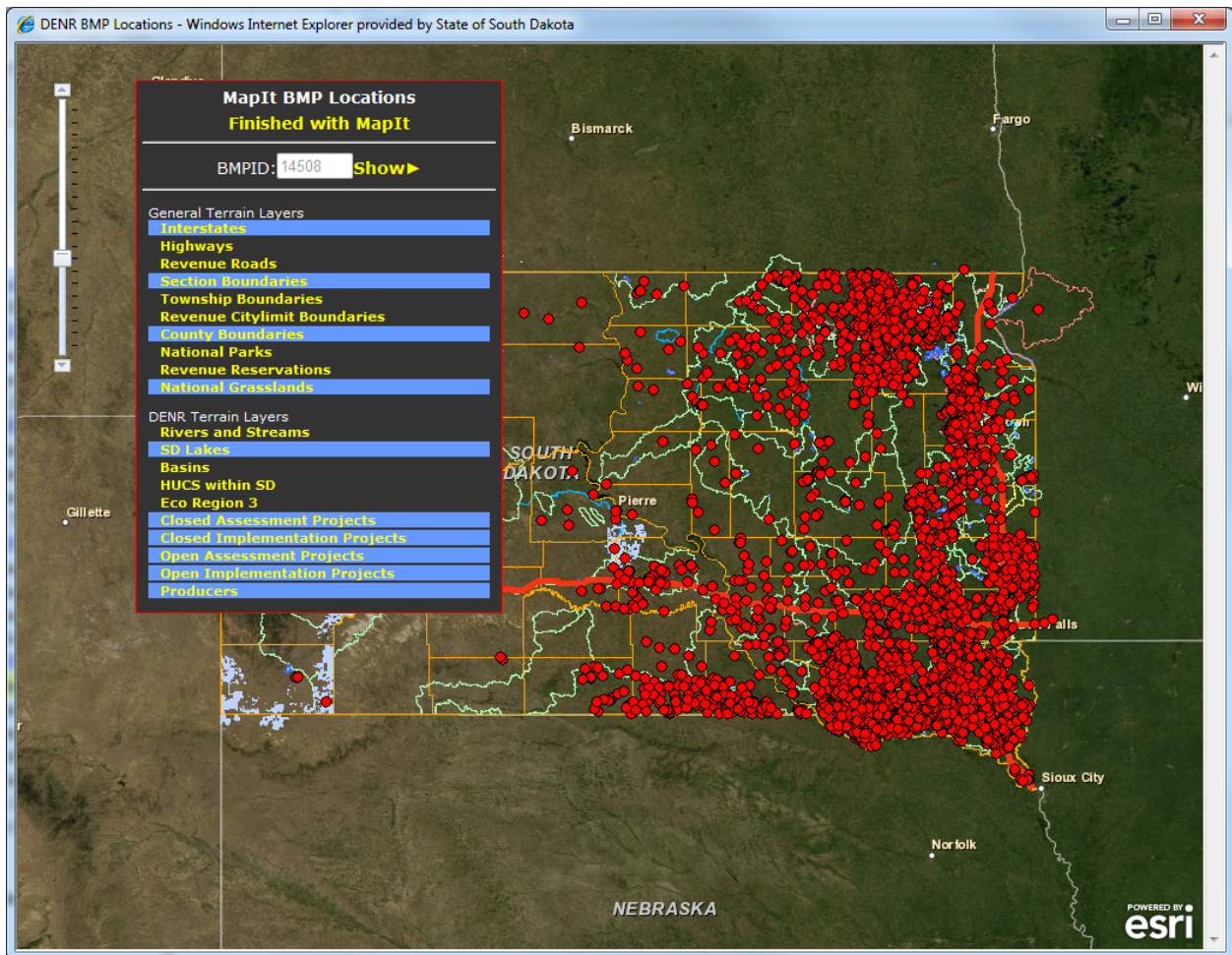


Figure 13: BMP Map It.

The Map It BMP Locations menu box can be moved by placing the cursor at the top of the box then click and drag it to the desired location. Different layers can be turned on and off by clicking the layers in the Map It menu.

To create a new point click **Show▶**. This will bring the **Create this Point** option under the BMPID. Now zoom into the area that the BMP is to be placed by double clicking on the map or using the zoom bar on the left side of the screen. After the desired location is found, click **Create this Point**, then click on the location of the BMP. It may take a few seconds but a new red dot will appear on the screen. After this is done, click **Finished with MapIt** to exit out of Map It.

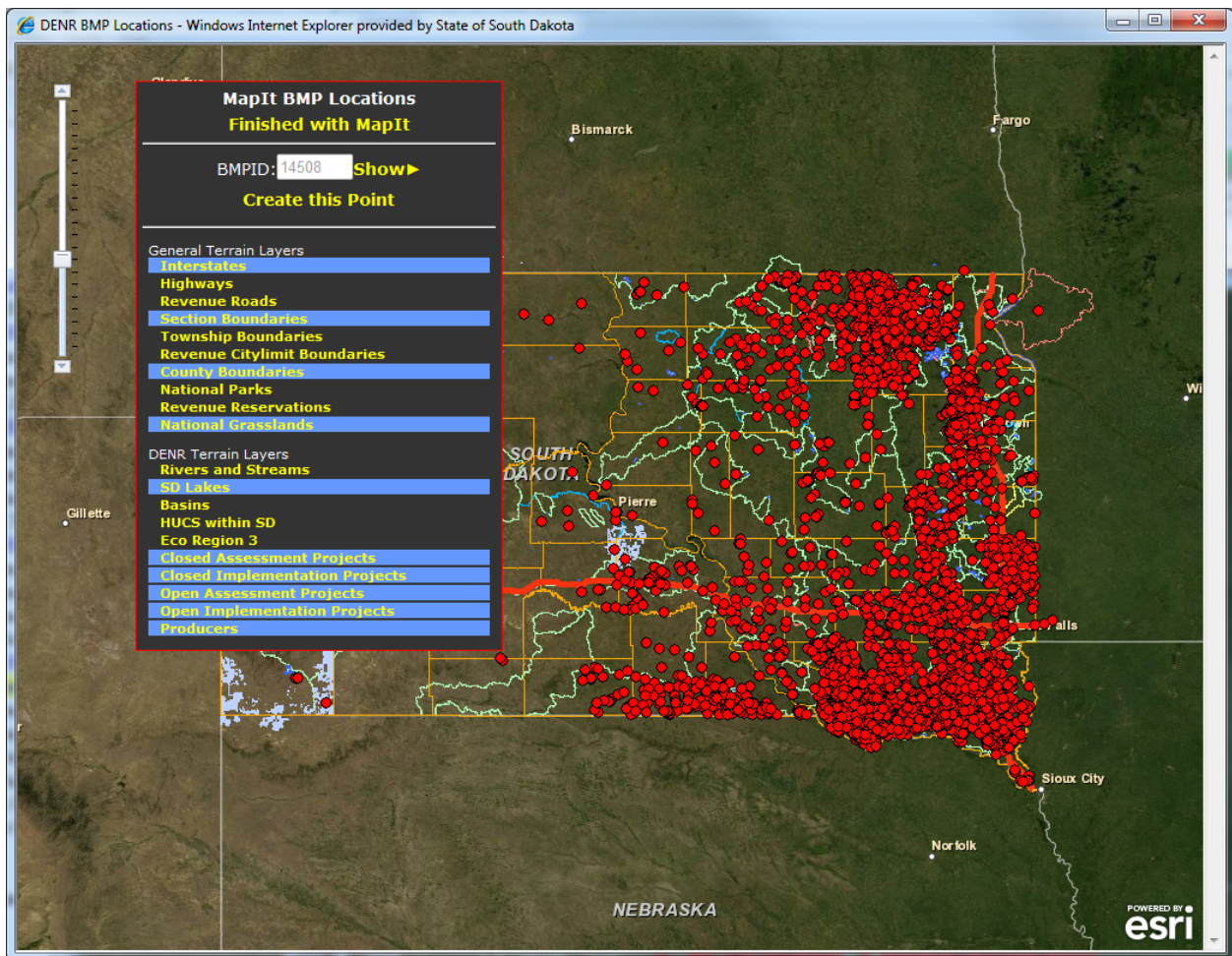


Figure 14: Placing a BMP in Map It.

Method 2- Using “Google Maps”

Open a new internet window and navigate to <http://maps.google.com/maps?hl=en&tab=wl> (Figure 17). From here, zoom into the location of the BMP by double clicking on the map in the desired direction. The Satellite view can be turned on to see an aerial view of the area.

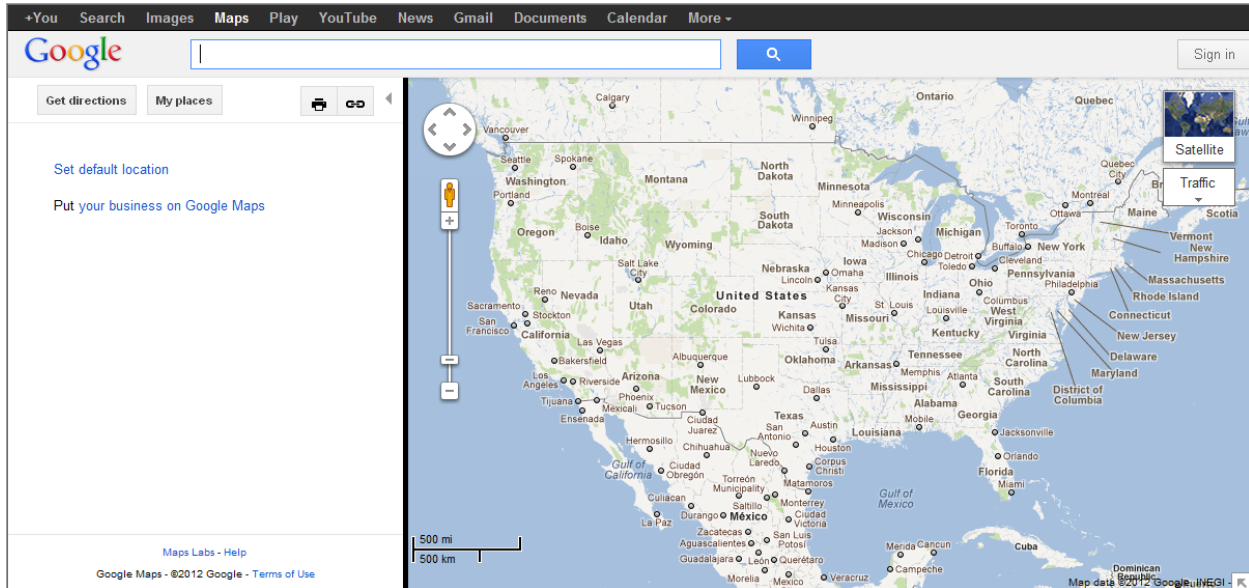


Figure 15: Google Maps Opening Page.

After the BMP is located, right click above it. This should give you the selection shown in Figure 18. Select the “What’s Here?” option. The latitude and longitude should appear in the search box. Take these numbers and enter them into the “Latitude” and “Longitude” textboxes as seen in Figure 12 and click save.

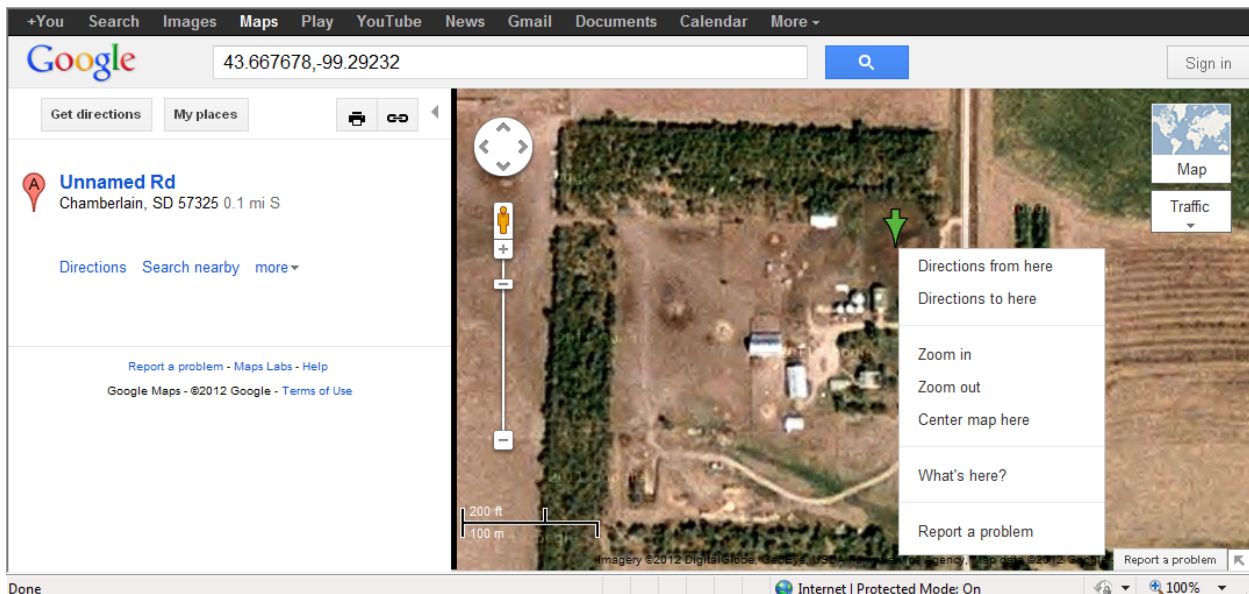


Figure 16: Google Maps “What’s here”.

Retrieving Information/Deleting/Moving a Point in Map It

When opening Map It after a point has already been entered, only the points that are in that project will appear on the map. To look up information on any of these points enter the Login information in the Map It menu and clicking on point. Information similar to that in Figure 17 will appear. To zoom to the producer's point that used to open Map It, click **Show ▶**.

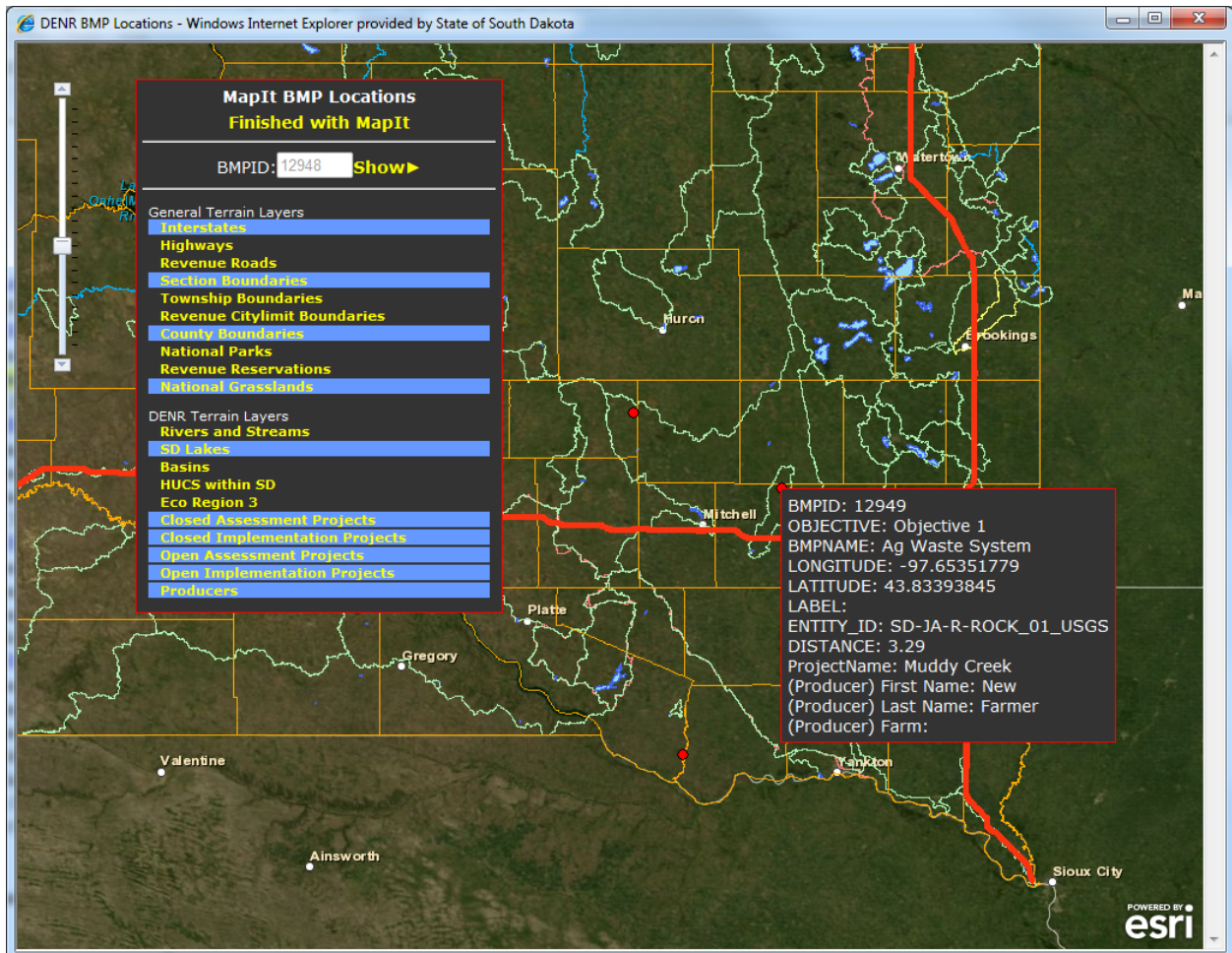
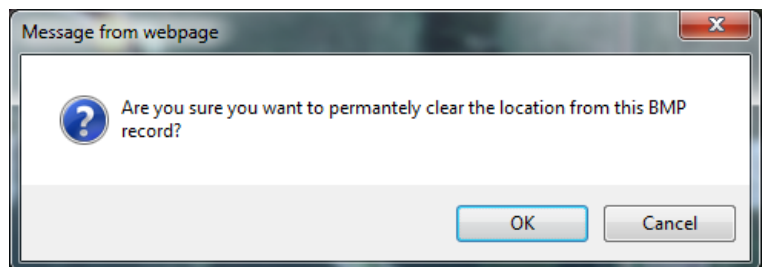


Figure 17: BMP Map It with Point Selected.

After the map zooms in, the point can either be deleted or moved. To delete the point, click **Delete this Point**. This will open a window simillare to the picture to the right. Click OK to finish deleting.



This will close Map It, and clear any information that Tracker had with it's location.

To move the point, click **Move this Point**, then navigate to and click the new desired location on the map. This could be near the original point, or across the state from it. After clicking the location it may take just a few seconds, but a new point should appear on the map as in Figure 18. Click **Finished with MapIt** to close Map It.

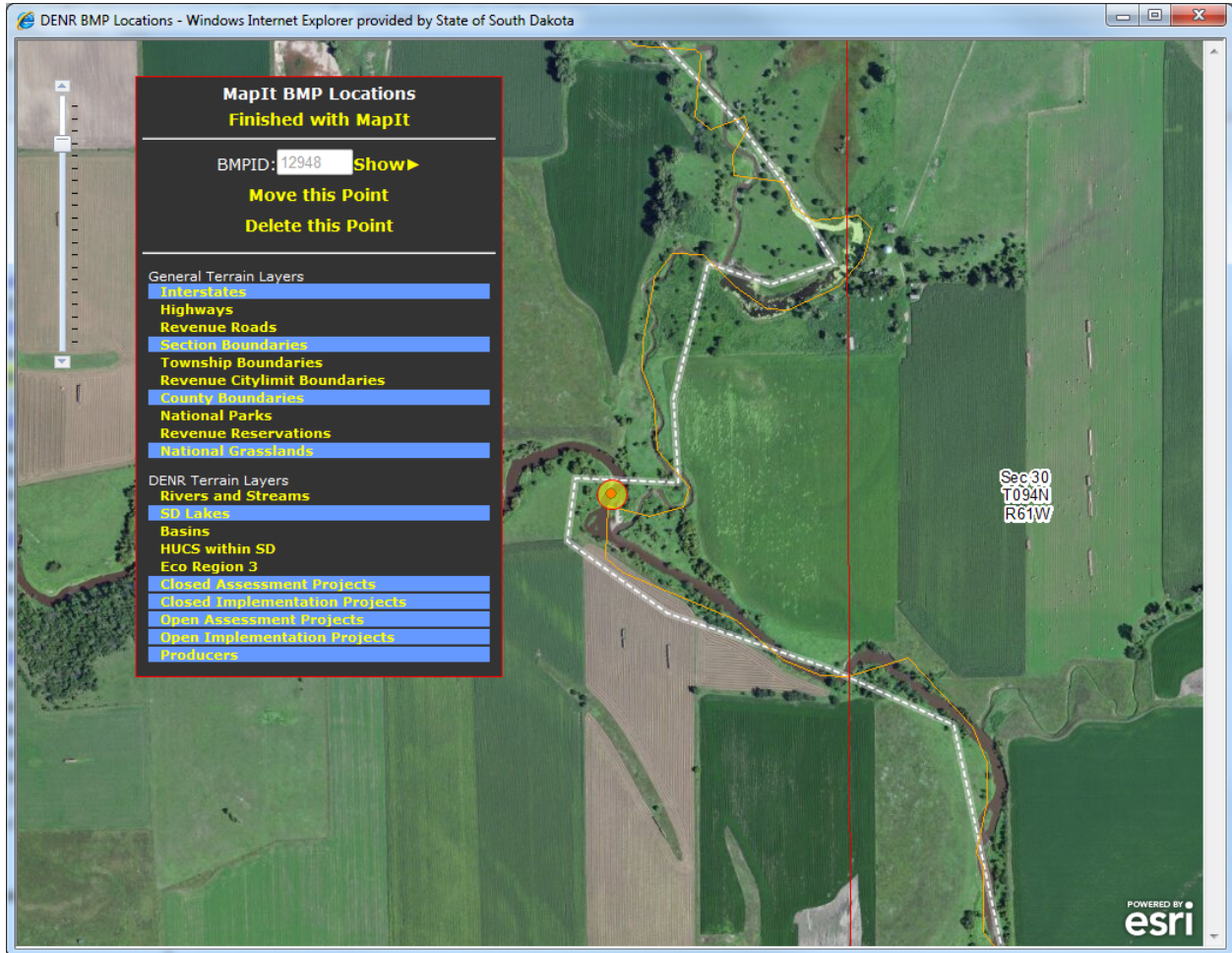
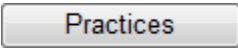
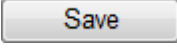
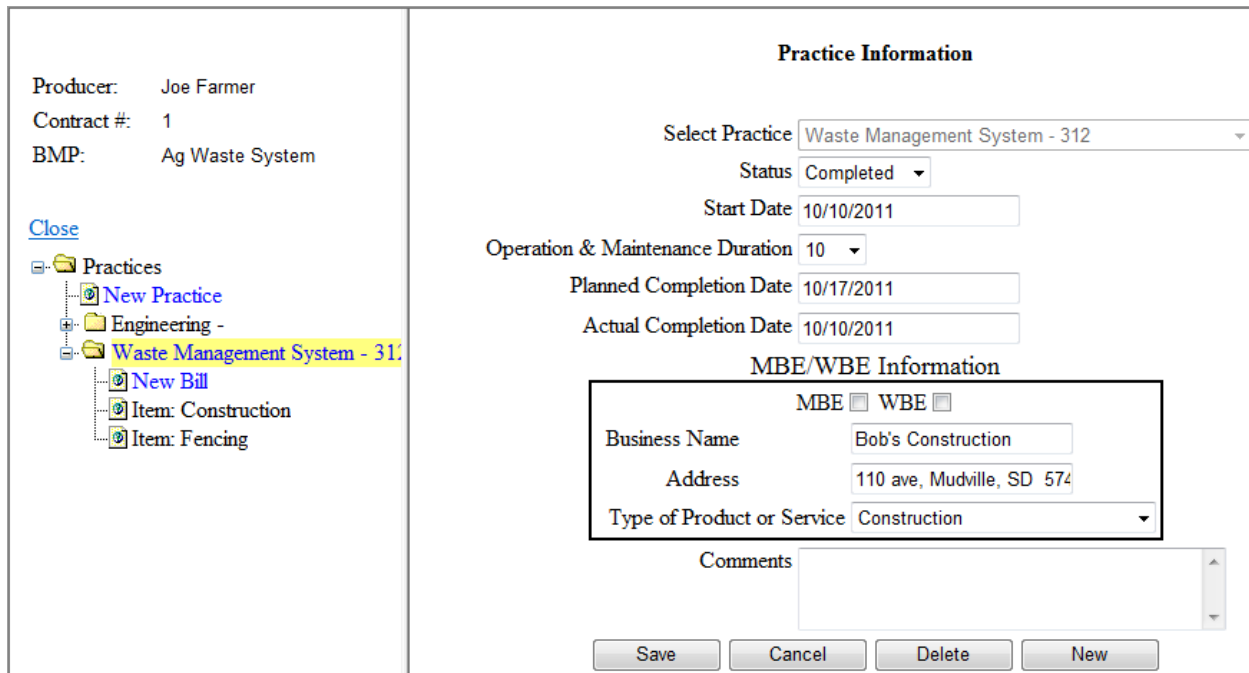


Figure 18: Moving a Point in Map it.

3.4 Practice Information

Practices are subcomponents used to complete a BMP. To enter practice information, click the  button seen in Figure 12. Any of the NRCS practices can be entered as a practice. For each practice, select the status and enter the information shown in Figure 19 and date started. A “Operation & Maintenance Duration” will automatically be entered after selecting most practices. Other information about the practice(s) can be entered in the comments section. When the practice is completed, change the status to complete and enter the actual completion date. When finished entering data click .



Practice Information

Producer: Joe Farmer
Contract #: 1
BMP: Ag Waste System

[Close](#)

- Practices
 - New Practice
 - Engineering -
 - Waste Management System - 312
 - New Bill
 - Item: Construction
 - Item: Fencing

Select Practice: Waste Management System - 312

Status: Completed

Start Date: 10/10/2011

Operation & Maintenance Duration: 10

Planned Completion Date: 10/17/2011

Actual Completion Date: 10/10/2011

MBE/WBE Information

MBE WBE

Business Name: Bob's Construction

Address: 110 ave, Mudville, SD 574

Type of Product or Service: Construction

Comments

Save Cancel Delete New

Figure 19: Practice Information Page.

3.5 Practice Bill

Several items can be entered under individual practices. Items are subcomponents that are used to complete a practice. As shown in Figure 20, items listed under Waste Management System (WMS) are components of building a WMS. The items can be labeled as determined locally. For example, an item could be labeled as hardware store, lumbar yard, or what was purchased, as shown in Figure 20 “Construction” and “Fencing”. The “Payment Number” is the check number that was used to pay for the item, or an invoice number for a bill. This screen also contains a notes section to describe what was purchased or completed.

The “Service Begin Date” and “Service End Date” is to represent the time period that an item being billed for took place. If an item was completed in one day, the two dates should be the same. If the bill is for a practice that took more than one day, the first day the practice was started is the “Service Begin Date”, and the day it was completed is the “Service End Date”. If the practice is not completed and the bill needs to be paid, the time period the bill was incurred must be represented by these dates. Having these dates is very important for DENR when applying match to a grant and to know what fiscal year the expenses must be allocated to.

Producer: Joe Farmer
Contract #: 1
BMP: Ag Waste System

[Close](#)

- Practices
 - New Practice
 - Engineering -
 - Waste Management System - 31
 - New Bill
 - Item: Construction
 - Item: Fencing

Practice Bill

Description:
 Quantity:
 Units:
 Payment Number:
 Paid/Invoice Date:
 Service Begin Date:
 Service End Date:

MBE/WBE Information

MBE WBE
 Business Name:
 Address:
 Type of Product or Service:

Notes:

Funds Used

	Fund Name	Advance		Amount
Edit Delete	319	N		\$90,000.00
Edit Delete	Local	N		\$50,000.00
<input type="button" value="Add Fund"/>	319	N	Total	\$140,000.00

YOU WILL EXCEED THE AVAILABLE PROJECT LEVEL BALANCE FOR THIS FUND

BMP Funds Available: (\$95,500.00)
****Exceeding BMP Amount is Allowed****
 Project Funds Available: \$259.00
 Advance Balance: \$20,000.00

Figure 20: Practice Bill Page.

After saving the Practice Bill, the fund and amount used to pay for the bill can be entered. A list of funds available for the items is located in the fund name dropdown box shown under the practice bill in Figure 20. Lists of available funds for individual items were entered by DENR at the beginning of the project, and can be changed at any time if needed. Multiple funds can be used for each item if necessary. Select the fund used to pay for part/all of the cost for the item.

“**BMP Funds Available**” is amount of the selected fund that is available for practices under the individual BMP. “**Project Funds Available**” is the amount of the selected fund that is available to the project. “**Advance Balance**” is the amount of the advance for the fund selected that has not been claimed (used for 319 only). These amounts are shown in red on the lower right side of the Item Screen after a fund is selected (as in Figure 20).

If the item is paid for using a fund that is not listed in the dropdown, or if there is an incorrect amount of money available from a fund, the assigned DENR project officer must be contacted. The project officer will make that fund available for the item or correct the amount available.

Certain funds are capped based on contracts or other agreements. Other funds are not capped because the maximum amount is not limited. The message in blue stating that “****Exceeding This Amount is Allowed,**” means that exceeding the “**BMP Fund Available**” or the “**Project Funds Available**”, depending on which available amount the statement is underneath, is allowed. The DENR officer must be contacted if the available amount will be exceeded by a large amount as the project budget in the PIP still limits the amount available.

The advance option on this screen (Figure 20) is to claim 319 advanced payments for an item. If Y is selected, the money used for the item will be put toward depleting the advance, and will not be added to the 319 reimbursable amount on the voucher. This way a project that has received an advance at the start of the project can pay smaller bills as they go, and eventually claim it. This option does not apply to any other fund than 319, even though it is seen with all funds.

If funds available for an item are capped by contract, the warning shown in Figure 20 “**YOU WILL EXCEED THE AVAILABLE PROJECT LEVEL BALANCE FOR THIS FUND**” will appear when attempting to enter more funds than available. If this message appears, either money from a different fund must be used, or a budget amendment must be requested from the project officer.

3.6 MBE/WBE

The MBE/WBE Information section shown to the right here is to capture information for the MBE/WBE spreadsheet shown

MBE/WBE Information

MBE WBE

Business Name:

Address:

Type of Product or Service:

in Figure 21. **This information is required if a Minority Business Entity (MBE) or Woman Business Entity (WBE) is used, or if the total amount of a contract is over \$10,000. This includes funds from other sources than 319.** This information can either be entered on the Practice Information page (Figure 19), or in the Practice Bill page (Figure 20). If this information is entered in the Practice Information page, it is assumed that all bills under that Practice will be applied to that entity. Whereas if this information is entered under the Practice Bill page, it is assumed only those bills will be applied to that entity.

	A	B	C	D	E	F	G	H
1	MBE/WBE PROCUREMENTS MADE DURING FFY 2012 (10/1/11 to 9/30/12)							
2								
3	PART II.							
4								
5	Procurement Made By		Business Enterprise		\$ Value of Procurement	Date of Award (MM/DD/YY)	Type of Product or Service ¹ (Enter Code)	Name & Address of Contractor or Vendor
6	Recipient	Other	Minority	Women				
7	Bob's Construction		\$0.00 0%	\$0.00 0%	\$140,000.00	11/03/08	N/A	110 ave, Mudville SD 57407
8								
9								
10								
11								
12								
13								
14								
15								
16								
17	¹ Type of product or service codes:							
18								
19	1 = Agriculture		5 = Transportation		9 = Services		10 = Other	
20	2 = Mining		6 = Wholesale Trade		a = Business Services			
21	3 = Construction		7 = Retail Trade		b = Professional Services			
22	4 = Manufacturing		8 = Finance, Insurance, Real Estate		c = Repair Services			
23					d = Personal Services			

Figure 21: MBE/WBE Spreadsheet.

3.7 Milestone Information

After installation of the practices and the BMP is complete, milestones must be entered. To access the milestone page, click **Milestone Status** from Figure 12. The milestone summary page can be seen in Figure 22. This page displays:

- milestones for the BMP end dates
- amount of BMPs to be completed for each milestone
- amount of BMPs that were actually completed for each milestone

Producer: Joe Farmer
 Contract #: 1
 BMP: Ag Waste System

[Close](#)

- Milestones
 - 2 Waste Management System - 312
 - 1 Waste Management System - 312 By 07/21/2011
 - 1 Waste Management System - 312 By 07/21/2012
 - 2 Engineering -

Milestone List for Current Contract/BMP

Due Date	Goal Amount	Actual Amount	Unit
07/21/2011	1	1.00	Waste Management System - 312
Totals	1	1	

Milestone List For All Producers

Due Date	Goal Amount	Actual Amount	Unit
07/21/2011	1	1.00	Waste Management System - 312
07/21/2012	1	1.00	Waste Management System - 312
Totals	2	2	

Figure 22: Milestone Summary Page.

To enter completed BMPs, the milestone completed must be selected (Figure 23). Choose the milestone with the earliest date which has not yet expired. Milestones must be added together for that producer up till the milestone end date if multiple BMPs are being entered for the same milestone. Having more or less than the quantity stated for the milestone goal is allowed.

Producer: Joe Farmer
 Contract #: 1
 BMP: Ag Waste System

[Close](#)

- Milestones
 - 2 Ag Waste Systems & Nutr. Mgt. PLans
 - 1 Ag Waste Systems & Nutr. Mgt. PLans By 07/21/2011
 - 1 Ag Waste Systems & Nutr. Mgt. PLans By 07/21/2012

Milestone Status

Milestone Goal 1 Ag Waste Systems & Nutr. Mgt. PLans By 7/21/2011

Current

*Enter only what was completed since the last update for this Contract's BMP. This is not a running total.

Previous Entries For This Milestone

Producer	Contract #	BMP	#Completed
John Smith	Smith # 1	Ag Waste System	1.00
Bob Smith	BSmith-1	Ag Waste System	0.00
Total			1

Figure 23: Milestone Completion Page.

The “Previous Entries For This Milestone” table under “Milestone Status” contains:

- a list of other producers that have completed the same BMP
- the contract under which the BMPs were completed
- the number of BMPs completed

3.8 Livestock Information

If the BMP is an Ag Waste System, Grazing Management System, or has a Nutrient Management Plan, livestock information must be entered in the “Livestock Management” page (Figure 24). This page is available by clicking on the **Livestock Mgt.** button (see Figure 12). Enter the number of animals or number of acres in the Quantity text box. Then select the units from the dropdown box. A description of the quantity and units can also be entered. The totals entered for all producers in the project will be shown in the table seen at the bottom of the Livestock Management page.

Livestock				
Description	800-1200 lb		Quantity	500
			Unit	Stock Cows
Save Cancel New Delete				
Totals for this unit (includes the above)				
Producer	Contract #	BMP	Quantity	Unit
Joe Farmer	1	Ag Waste System	500	Stock Cows

Figure 24: Livestock Management Page.

3.8 Pollution Information

When pollution reductions are calculated for the BMPs, they must be entered on the NPS Reduction page (Figure 25). To get to this page, click on the **NPS Reduction** button (see Figure 12). A dropdown box list of pollutants and locations available for the project will be displayed. If a pollutant is missing from the list contact the project officer.

The Cell Quantity is the number that can be derived from STEPL or RUSLE2 as an on-site reduction. The Watershed Quantity is the number that can be derived from the AnnAGNPS model run as a delivered reduction for the watershed.

<p>Producer: Joe Farmer Contract #: 1 BMP: Ag Waste System</p> <p>Close</p> <ul style="list-style-type: none"> [-] Pollutions <ul style="list-style-type: none"> [+] New [+] Nitrogen - Mud Creek [+] Phosphorous - Muddy Lake 	<h3>NPS Reduction</h3> <p>Select Pollutant: Phosphorous - Muddy Lake</p> <p>Cell Quantity: <input style="width: 100px;" type="text" value="99"/> Unit: Pounds</p> <p>Watershed Quantity: <input style="width: 100px;" type="text" value="0"/> Unit: Pounds</p> <p style="text-align: right;"> <input type="button" value="Save"/> <input type="button" value="Cancel"/> <input type="button" value="New"/> <input type="button" value="Delete"/> </p>
--	---

Figure 25: NPS Reduction Page.

4.0 Personnel Salaries

The Personnel Salaries section allows project staff salary expenses to be entered.

4.1 Salaries

When setting up the personnel salaries folder, select the salary category from the dropdown list. The categories reflect those listed in the PIP for personnel salaries. Figure 26 shows the fields to enter for each salary recipient. In the **Salary Name** box, enter the name of the person being paid and the calendar year in which they are being paid. Listing the salary name and year will make it easier to keep track of payments as the project progresses. A new personnel salary file for all salaried personnel must be setup each year.

<p>Back To Main</p> <ul style="list-style-type: none"> [-] Muddy Creek <ul style="list-style-type: none"> [-] Producers [-] Personnel Salaries <ul style="list-style-type: none"> [+] New Salary [-] Coordinator: Bob 2011 [-] Coordinator: Bob-2012 [-] Non-Salary Expenses [-] Assessment Goals [-] Voucher [-] GRTS [+] Project Summary 	<h3>Individual Salary Information</h3> <p style="color: red;">Save Completed</p> <p>Category: Coordinator</p> <p>Salary Name: <input style="width: 150px;" type="text" value="Bob-2012"/></p> <p>Address: <input style="width: 150px;" type="text"/></p> <p>Address 2: <input style="width: 150px;" type="text"/></p> <p>City: <input style="width: 150px;" type="text"/></p> <p>State: SD</p> <p>Zip Code: <input style="width: 100px;" type="text"/></p> <p>Phone Number: <input style="width: 100px;" type="text"/></p> <p style="text-align: right;"> <input type="button" value="Save"/> <input type="button" value="Cancel"/> <input type="button" value="Delete"/> <input type="button" value="New"/> </p>
---	---

Figure 26: Personnel Salaries Page.

4.2 Salary Paycheck

Payments for salaries can be tracked by date, month, or months. Enter the following items in the appropriate boxes:

- **Description** of the bill
- **Non-Admin Hours** worked
- **Admin Hours** worked
- **Paid / Invoice Date**
- **Service Begin Date (Start of pay period)**
- **Service End Date (End of pay period)**
- **Payment Number**

Most hours worked will be logged under non-administrative (non-admin). The non-admin category includes hours spent working: with producers (including entering producer information into this tracker system), education & training activities, technical assistance, and demonstrations. Items that fall under Admin are: completing reports (mid-year and annual), financial management (including time spent working on financial information in this tracker system), and audits.

[Back To Main](#)

- [-] Muddy Creek
 - [-] Producers
 - [-] Personnel Salaries
 - [+] New Salary
 - [-] Coordinator: Bob 2011
 - [-] Coordinator: Bob-2012
 - [+] New Paycheck
 - [+] **January-Salary**
 - [+] February
 - [-] Non-Salary Expenses
 - [-] Assessment Goals
 - [-] Voucher
 - [+] New Voucher
 - [+] 1
 - [+] New Voucher 2
 - [+] **Advance Voucher
 - [-] GRTS
 - [+] Project Summary

Paycheck Information

Description

Non-Admin Hours

Admin Hours

Paid/Invoice Date

ServiceBeginDate

Service End Date

Payment Number

Notes

	Fund Name	Advance	Amount
Edit	Delete	319	N \$1,000.00
Edit	Delete	City of Mudvile	N \$1,000.00
		Total	\$2,000.00
<input type="button" value="Add"/>	<input type="text" value="319"/>	<input type="text" value="N"/>	<input type="text"/>

Salary Funds Available: \$9,150.00
 Project Funds Available: \$2,159.00
 Advance Balance: \$20,000.00

Figure 27: Paycheck Page.

The funds used to pay for the salary are located under the paycheck information after the clicking the button. Funds available for the salary are located in the “Fund Name” dropdown box. The amount available from that fund is displayed in red near the bottom of the page. After the fund is selected and the amount spent is entered, click the button to add the payment.

5.0 Non-Salary Expenses

Expenses for supplies, travel, office space, and other administrative expenses can be entered in the Non-Salary Expenses section.

5.1 Non-Salary Group

The non-salary expenses folder is for items such as equipment, travel, office space, and other administrative management expenses. There are a couple different ways to set up these folders. One way is to group expenses by the month and year the expenses were incurred or a date range (as highlighted in Figure 28). Another way to track expenses is to label the groups as the type of expenses that will be entered in it. As in Figure 28 there is one folder for equipment purchases.

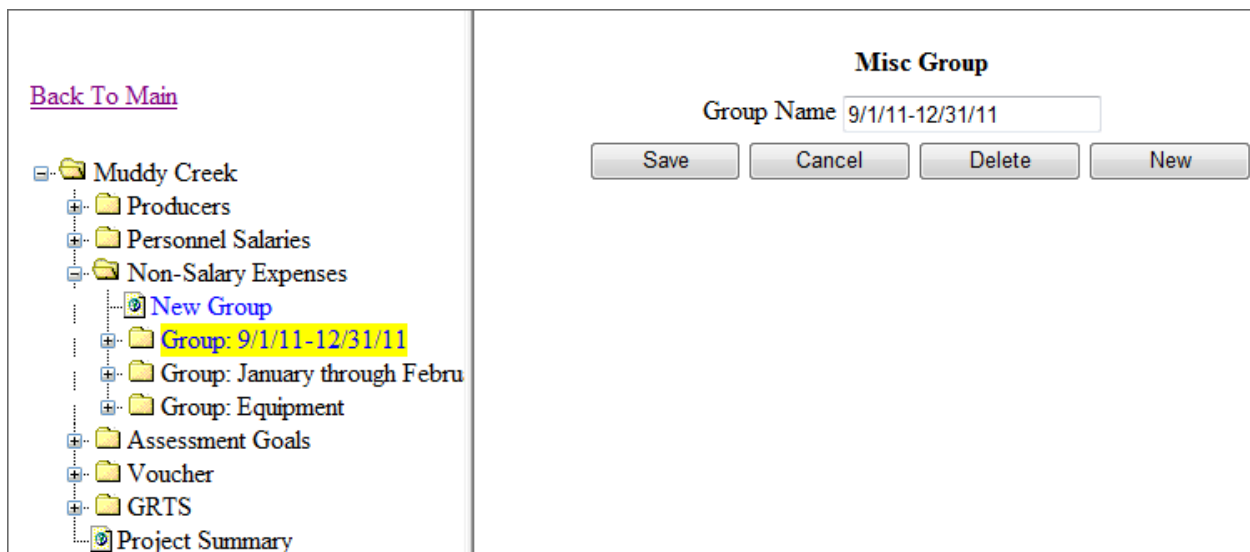


Figure 28: Non-Salary Group Example.

5.2 Non-Salary Group Bill

After the group is set up, the bill (Figure 29) can be completed. The category dropdown box contains the list of non-salary expenses described in the PIP. All textboxes, except for the notes section, on this page must be filled before it will allow the information to be saved.

The “Service Begin Date” and “Service End Date” is to represent the time period that the item being billed for took place. If an item was completed in one day the two dates should be the same. If the bill is for an item that took more than one day, the first day the item was started is the “Service Begin Date”, and the day the item was completed is the “Service End Date”. If the item is not completed and the bill needs to be paid, the time period the bill was incurred must be represented by these dates. Having these dates is very important when applying match to a grant and to know what fiscal year the expenses must be allocated to.

[Back To Main](#)

- Muddy Creek
 - Producers
 - Personnel Salaries
 - Non-Salary Expenses
 - New Group
 - Group: 9/1/11-12/31/11
 - Group: January through Febru
 - New Bill
 - Supplies: Paper
 - Travel: Trip to Mitchell
 - Group: Equipment
 - Assessment Goals
 - Voucher
 - GRTS
 - Project Summary

Administrative Bill

Select a Category: Travel

Description: Trip to Mitchell

Quantity: 200

Unit: miles

Payment Number: to be invoiced

Paid/Invoice Date: 2/29/2012

Service Begin Date: 2/14/2012

Service End Date: 2/14/2012

Notes: Informational meeting with producers.

Save Cancel Delete New

Fund Name	Advance	Amount
Total		\$0.00
Add 319	N	65

BMP Funds Available: \$2,000.00
**Exceeding BMP Amount is Allowed
Project Funds Available: \$2,159.00
Advance Balance: \$20,000.00

Figure 29: Non-salary Group Bill.

Funds allowed to pay for the non-salary expense are located under the bill information after clicking the **Save** button. Funds available for the salary are located in the “Fund Name” dropdown box. The amount available from that fund is displayed in red near the bottom of the page. After the fund is selected, and amount spent entered, click the **Add** button to add the payment.

6.0 Assessment Goals

If the project is an assessment, or has an assessment component, information may be required that must be entered in the Assessment Goals folder (Figure 30). Objectives are those from the PIP. Dates samples were collected must be entered along with the number of samples taken and comments for all sites on that date. The project sample sites are entered by the DENR project officer after sample locations are established.

The screenshot shows a web-based interface for entering assessment data. On the left is a tree view with a 'Back To Main' link at the top. The tree structure is as follows:

- Back To Main
- Muddy Creek
 - Producers
 - Personnel Salaries
 - Non-Salary Expenses
 - Assessment Goals
 - Objective 1: Lake samples
 - New Sample Date
 - 09/07/2011
 - 10/08/2011
 - Objective 1: Level Reading
 - Voucher
 - GRTS
 - Project Summary

On the right, the 'Sample Date' form is displayed. It includes a date input field with '10/8/2011' entered. Below this is a section titled '*Enter Number Samples And/Or Notes for Each Location Below'. It contains two rows of data entry:

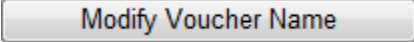
Mud Lake ML02	1	Wind was from the N/W a
Mud Lake ML01	0	

At the bottom of the form are four buttons: 'Save', 'Cancel', 'Delete', and 'New'.

Figure 30: Assessment Goals.

7.0 Voucher

To prepare a voucher for a reimbursement request, open the voucher folder and click on the blue “**New Voucher**” button. The screen shown in Figure 31 will appear. A voucher description using a number or date, and the date to be vouchered can be entered. Funds to be vouchered must also be selected using this screen. Select funds to be vouchered or “all” if the specific fund(s) are unknown. Funds can be added later, if needed, by clicking the

 button on Figure 32.

[Back To Main](#)

- [-] Muddy Creek
 - [-] Producers
 - [-] Personnel Salaries
 - [-] Non-Salary Expenses
 - [-] Assessment Goals
 - [-] Voucher
 - [+] **New Voucher**
 - [+] 1
 - [+] Voucher 2
 - [+] **Advance Voucher
 - [-] GRTS
 - [-] Project Summary

New Voucher

Voucher Name:

Enter Voucher Date:

Select Funds From Below

All

319

City of Mudvile

Consolidated

Local

Local cash

*To select more then one fund, hold down the ctrl key.
 *Once you create the voucher, you will not be able to change the fund types.

Figure 31: New Voucher.

Access to add or remove funds from the voucher is gained through the voucher page (Figure 32). To add items to the voucher, click on any buttons under the “**Add New Expenses**” heading. To remove items from the voucher, click on any buttons under the “**View Existing Vouchered Expenses**” heading. Clicking any of these buttons will bring up a page similar to that shown in Figure 33.

[Back To Main](#)

- [-] Muddy Creek
 - [-] Producers
 - [-] Personnel Salaries
 - [-] Non-Salary Expenses
 - [-] Assessment Goals
 - [-] Voucher
 - [+] New Voucher
 - [+] 1
 - [+] **Voucher 2**
 - [+] **Advance Voucher
 - [-] GRTS
 - [-] Project Summary

Voucher Information

Name: Voucher 2 **Date:** 02/29/2012 **Total:** \$0.00

*This Voucher Has Not Been Finalized.

Add New Expenses

<input type="button" value="BMP"/>	<input type="button" value="Non-Salary"/>	<input type="button" value="Salary"/>
Reimbursable: \$46,700.00	Reimbursable: \$65.00	Reimbursable: \$1,450.00
Non-Reimbursable: \$162,233.00	Non-Reimbursable: \$146.00	Non-Reimbursable: \$1,035.00

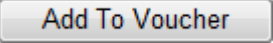

View Existing Vouchered Expenses

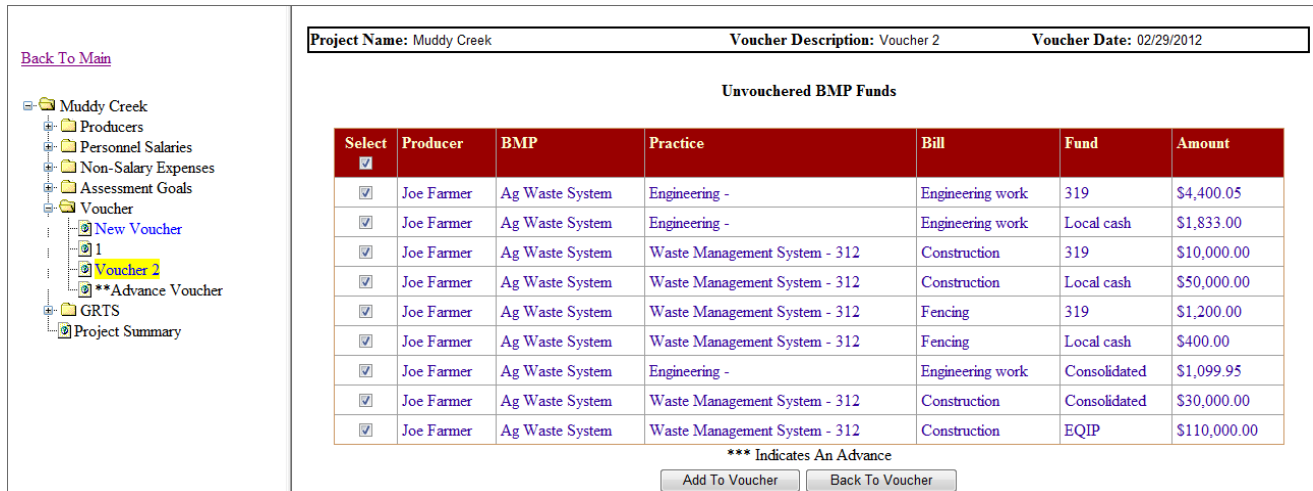
<input type="button" value="BMP"/>	<input type="button" value="Non-Salary"/>	<input type="button" value="Salary"/>
Total: \$0.00	Total: \$0.00	Total: \$0.00

<input type="button" value="Preview Voucher Summary"/>	<input type="button" value="Preview Voucher Details"/>
<input type="button" value="Finalized Voucher"/>	<input type="button" value="Modify Voucher Name"/>
<input type="button" value="Delete Voucher"/>	<input type="button" value="Pay Request Sheet"/>

Figure 32: Unfinalized Voucher Page.

7.1 Selecting Bills for Voucher

From the pick list (Figure 33), select items to be included in the voucher. Leave items unmarked that will not be vouchered at this time. When selection is completed click , this will bring the page in Figure 32 up again with new amounts in the “Add New Expenses” and “View Existing Vouchered Expenses”. The voucher can be edited using these pages until the  button is pressed (seen in Figure 32).



[Back To Main](#)

- Muddy Creek
 - Producers
 - Personnel Salaries
 - Non-Salary Expenses
 - Assessment Goals
 - Voucher
 - New Voucher
 - 1
 - Voucher 2**
 - **Advance Voucher
 - GRTS
 - Project Summary

Select	Producer	BMP	Practice	Bill	Fund	Amount
<input checked="" type="checkbox"/>	Joe Farmer	Ag Waste System	Engineering -	Engineering work	319	\$4,400.05
<input checked="" type="checkbox"/>	Joe Farmer	Ag Waste System	Engineering -	Engineering work	Local cash	\$1,833.00
<input checked="" type="checkbox"/>	Joe Farmer	Ag Waste System	Waste Management System - 312	Construction	319	\$10,000.00
<input checked="" type="checkbox"/>	Joe Farmer	Ag Waste System	Waste Management System - 312	Construction	Local cash	\$50,000.00
<input checked="" type="checkbox"/>	Joe Farmer	Ag Waste System	Waste Management System - 312	Fencing	319	\$1,200.00
<input checked="" type="checkbox"/>	Joe Farmer	Ag Waste System	Waste Management System - 312	Fencing	Local cash	\$400.00
<input checked="" type="checkbox"/>	Joe Farmer	Ag Waste System	Engineering -	Engineering work	Consolidated	\$1,099.95
<input checked="" type="checkbox"/>	Joe Farmer	Ag Waste System	Waste Management System - 312	Construction	Consolidated	\$30,000.00
<input checked="" type="checkbox"/>	Joe Farmer	Ag Waste System	Waste Management System - 312	Construction	EQIP	\$110,000.00

*** Indicates An Advance

Figure 33: Voucher Pick List.

7.2 Voucher Summary

A print-out of what the voucher will look similar to that shown in Figure 35. There will be space at the top of the page for the sponsor’s letter head. The four sections in the vouchers are: Contract Amount, Reimbursable, Advance Repayment, and Match.

The “Contract Amount” contains funds available for reimbursement through contracts with the DENR. The amount available to the project is listed under **Obligated**. If there have been any advances from the fund, it will be displayed under **Advance Amount**. The **Advance Remaining** shows the amount of advance that is yet to be claimed.

Funds listed in the “Contract Amount” section are also displayed at the top of the “Reimbursable” section under **Funds To Be Reimbursed**. The amount being claimed will be shown under **Current Voucher**. If there have been any previous payments from a fund, the total will be shown under **Previous Payments**. The **Total** column adds **Current Voucher** and **Previous Payments** to show the total expended after the voucher is processed. The

Admin/BMP section of the “Reimbursable” functions in the same manner as the **Funds To Be Reimbursed** section. **Admin/BMP** contains the categories for which 319 reimbursable items have been claimed in the Pick lists (Figure 33).

The “Advance Repayment” section will only be displayed on vouchers that have advance claimed. This section functions similar to the “Reimbursable” section for **Admin/BMP**.

To: SD DENR - Jeremy Schelhaas, 4305 S. Louise Ave, Suite 205, Sioux Falls SD, 57106 Receipts Attached File

Project Name: Muddy Creek

Voucher Name: Voucher 2

Control Number: 123-45

Project Sponsor: Moody County CD

Voucher Date: 02/29/2012

Grant Years: 2003

CONTRACT AMOUNT

<u>Fund Name</u>	<u>Obligated</u>	<u>Advance Amount</u>	<u>Advance Remaining</u>
319	\$100,000.00	\$20,000.00	\$19,935.00
Consolidated	\$45,000.00	\$0.00	\$0.00
Total	\$145,000.00	\$20,000.00	\$19,935.00

REIMBURSABLE

<u>Funds To Be Reimbursed</u>	<u>Current Voucher</u>	<u>Previous Payments</u>	<u>Total</u>
319	\$17,050.05	\$5,800.00	\$22,850.05
Consolidated	\$31,099.95	\$0.00	\$31,099.95

REIMBURSABLE

<u>Admin/BMP</u>	<u>Current Voucher</u>	<u>Previous Payments</u>	<u>Total</u>
Salaries	\$1,450.00	\$1,300.00	\$2,750.00
Supplies	\$0.00	\$0.00	\$0.00
Travel	\$0.00	\$0.00	\$0.00
Rent	\$0.00	\$0.00	\$0.00
Postage	\$0.00	\$0.00	\$0.00
Ag Waste System	\$46,700.00	\$0.00	\$46,700.00
Riparian Restoration/Protection	\$0.00	\$4,500.00	\$4,500.00
Total Costs	\$48,150.00	\$5,800.00	\$53,950.00

ADVANCE REPAYMENT

<u>Admin/BMP</u>	<u>Current Voucher</u>	<u>Previous Payments</u>	<u>Total</u>
Salaries	\$0.00	\$0.00	\$0.00
Supplies	\$0.00	\$0.00	\$0.00
Travel	\$65.00	\$0.00	\$65.00
Rent	\$0.00	\$0.00	\$0.00
Postage	\$0.00	\$0.00	\$0.00
Ag Waste System	\$0.00	\$0.00	\$0.00
Riparian Restoration/Protection	\$0.00	\$0.00	\$0.00
Total Costs	\$65.00	\$0.00	\$65.00

MATCH

<u>Fund Name</u>	<u>Current Voucher</u>	<u>Previous Payments</u>	<u>Total</u>
<u>Local</u>			
Local	\$0.00	\$0.00	\$0.00
City of Mudvile	\$1,181.00	\$0.00	\$1,181.00
Local cash	\$52,233.00	\$1,500.00	\$53,733.00
<u>State</u>			
Consolidated	\$31,099.95	\$0.00	\$31,099.95
Total Costs	\$84,513.95	\$1,500.00	\$86,013.95

Total Reimbursed: \$48,150.00

Current Percent Match: 83.16%

Overall 319 Project Percent Match: 78.96%

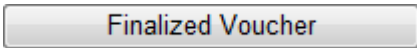
Authorized Representative _____ Date _____

Figure 34: Voucher Print-out.

Match is claimed in the “Match” section. The display is in the same format as the “Reimbursable” section. The match fund categories are listed under **Fund Name**. The match is displayed by type of match under the **Fund Name**. As shown in Figure 34, there are two types of match: **Local** and **State**. Under the types of match are the fund names. The funds and amounts under the “Match” section are 319 match items that have been claimed from the Pick lists (Figure 33). Any items that are not match or are not reimbursable will not show up on this page exe. EQIP, Other Federal... Some Items like Consolidated, as in Figure 34, will show up both in the “Reimbursable” section and the “Match” section.

If no changes are needed to the voucher, print the voucher summary on the sponsor’s letter head, and send a signed copy to DENR for processing. The address the voucher must be sent to is at the top of this form.

7.3 Finalizing Voucher

After the  button is clicked, a page similar to Figure 36 will pop-up stating that if the voucher is finalized, changes will not be allowed, and if it should proceed. Pressing OK to the pop-up displays a screen similar to Figure 35.

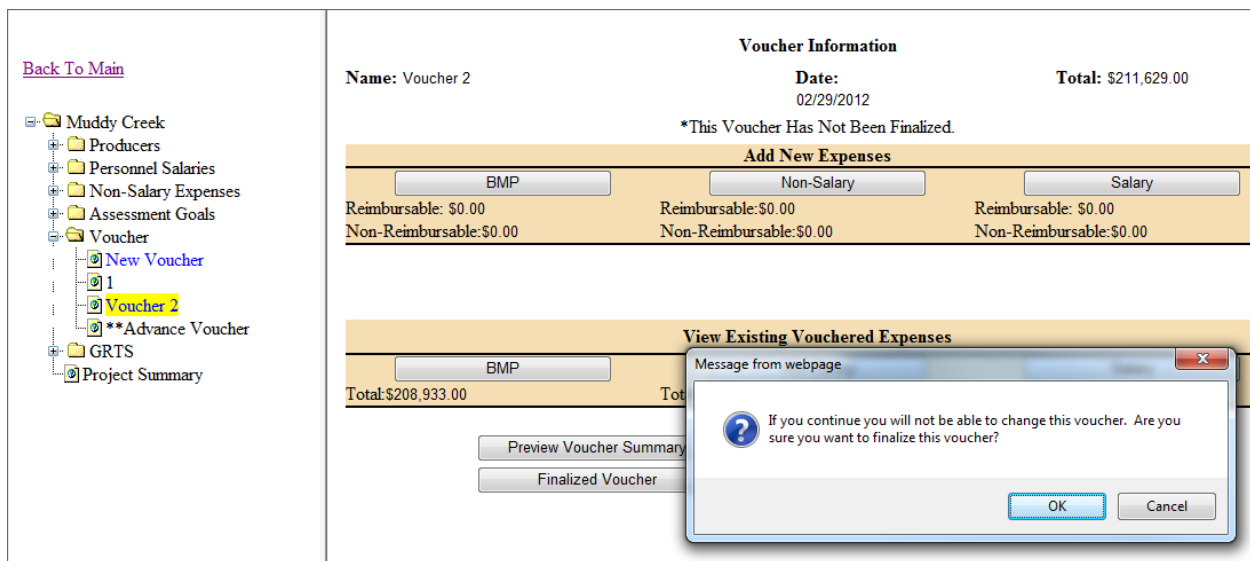


Figure 35: Finalizing Voucher Pop-up.

At this point the voucher can not be changed. The voucher information page will look similar to Figure 36. The Project officer will be notified by email that a voucher has been completed. If the voucher needs to be changed after it has been finalized, the project officer must be contacted to unfinalize the voucher.

[Back To Main](#)

- Muddy Creek
 - Producers
 - Personnel Salaries
 - Non-Salary Expenses
 - Assessment Goals
 - Voucher
 - New Voucher
 - 1
 - Voucher 2
 - **Advance Voucher
 - GRTS
 - Project Summary

Voucher Information

Name: Voucher 2 **Date:** 02/29/2012 **Total:** \$211,629.00

*This Voucher Has Been Finalized. No Changes Are Allowed.

Add New Expenses

BMP	Non-Salary	Salary
Reimbursable: \$0.00	Reimbursable: \$0.00	Reimbursable: \$0.00
Non-Reimbursable: \$0.00	Non-Reimbursable: \$0.00	Non-Reimbursable: \$0.00

View Existing Vouchered Expenses

BMP	Non-Salary	Salary
Total: \$208,933.00	Total: \$211.00	Total: \$2,485.00

Figure 36: Finalized Voucher Page.

7.4 Voucher Details

The Voucher Details will display more detailed information about what has been selected to be put on the voucher. Displayed in Figure 37 is an example Voucher Detail Page. As seen here, it is broke into three groups: Non-Salary Details, Salary Details, and BMP Details.

Non-Salary Details									
Category	Bill Group	Bill Description	Paid Date	Service Begin Date	Service End Date	319	Consolidated	Total Match	Total Cost
Postage	9/1/11-12/31/11	News letters	09/27/2011	09/27/2011	09/27/2011	\$0.00	\$0.00	\$96.00	\$96.00
Supplies	January through February	Paper	01/05/2012	01/05/2012	01/05/2012	\$0.00	\$0.00	\$50.00	\$50.00
Travel	January through February	Trip to Mitchell	02/29/2012	02/14/2012	02/14/2012	\$65.00	\$0.00	\$0.00	\$65.00
Total						\$65.00	\$0.00	\$146.00	\$211.00

Salary Details									
Salary Type	Salary Name	Salary Group	Paid Date	Service Begin Date	Service End Date	319	Consolidated	Total Match	Total Cost
Coordinator	Bob-2012	February	07/01/2003	03/26/2012	04/02/2012	\$450.00	\$0.00	\$35.00	\$485.00
		January-Salary	02/01/2012	01/01/2012	01/31/2012	\$1,000.00	\$0.00	\$1,000.00	\$2,000.00
Total						\$1,450.00	\$0.00	\$1,035.00	\$2,485.00

BMP Details									
Producer	Practice	Bill	Paid Date	Service Begin Date	Service End Date	319	Consolidated	Total Match	Total Cost
Joe Farmer	Ag Waste System	Engineering work	10/10/2011	09/26/2011	10/07/2011	\$4,400.05	\$1,099.95	\$1,833.00	\$7,333.00
		Construction	10/10/2011	08/29/2011	10/03/2011	\$10,000.00	\$30,000.00	\$50,000.00	\$90,000.00
		Fencing	10/06/2011	09/26/2011	10/03/2011	\$1,200.00	\$0.00	\$400.00	\$1,600.00
Total						\$15,600.05	\$31,099.95	\$52,233.00	\$98,933.00
Total						\$17,115.05	\$31,099.95	\$53,414.00	\$101,629.00

Figure 37: Voucher Details.

The Total Match column doesn't include match funds reimbursed by the State, i.e. Consolidated and CWSFR. These funds, as in Figure 37, will have their own column. The Total Cost column will not include other federal funds like EQIP. EQIP and other non-matching funds are still required to be claimed on vouchers even though they don't show up on these summaries.

8.0 GRTS

Every Project is required to submit GRTS reports annually, and if a project falls behind schedule, they will be required to submit a mid-year report also. To start a GRTS report Open the GRTS folder and click New [GRTS Report](#). Some of the information will automatically be filled in the textboxes as in Figure 38.

[Back To Main](#)

- Muddy Creek
 - Producers
 - Personnel Salaries
 - Non-Salary Expenses
 - Assessment Goals
 - Voucher
 - GRTS
 - 04/13/2012 Annual
 - New GRTS Report**
 - Project Summary

NONPOINT SOURCE 319(H) PROJECT PROGRESS REPORT FORM

Federal Fiscal Year of Project: 2003 Today's Date: 4/13/2012

Has the workplan been amended since the last GRTS Report?: Yes No

Please select which reporting period. MidYear Report Annual Report Quarterly Report

Status:

Project Title: Muddy Creek

Report Dates: From: To:

Sponsor Name: Moody County CD

Address: 202 East 3rd Ave

City: Flandreau State: SD Zip: 57028

Phone: 605-239-4635

Email: jeremy.schelhaas@state.sd.us

Prepared By: Jeremy Schelhaas

Milestones Completed

Overall Project Accomplishments

Objective/Tasks Accomplishments

Figure 38: GRTS Page.

Once the report dates are entered, usually beginning of October through end of September for the given year, click . This will load information into Milestones Completed, Objective/Tasks Accomplishments, load reductions, and GRTS required information. The Overall Project Accomplishments, Objective/Task Accomplishments, and Conclusions text boxes all will need to be manually entered as desired. Even though some information has been pre-loaded into the Objective/Tasks Accomplishments, more information on the BMPs and tasks are needed.

Also make sure to:

- Select a status description from the Status dropdown.
- Check Yes or No if the project has had an amendment since the last GRTS report.

After information has been entered, click **Save** near the bottom of the page as seen in Figure 39. This will make it so that the report can be brought up again and modified. When done modifying the report, and it is ready to be turned into DENR, click **Finalize**.

		Target	Reduction	Achieved (Numeric)	yes/no
Nitrogen	Mud Creek	0	0	0	Pounds per Year No
Phosphorus	Muddy Creek	0	0	0	Pounds per Year No

Description	Current Year	Cumulative Total	Units
Stream Channel Stabilization	0.0		Acres
Streambank and Shoreline Protection	0.0		Acres
Wetlands Created	0.0		Acres
Wetlands Restored	0.0		Acres

Figure 39: Saving a GRTS Report.

It may also be desired to save this document in a word style version to add pictures to the report. To do this click **Create Word Doc**. This will open a window similar to Figure 40. Here select to save or open the document. If open is selected, it can be modified and saved later. A document similar to the next two page example here will open for further modification.

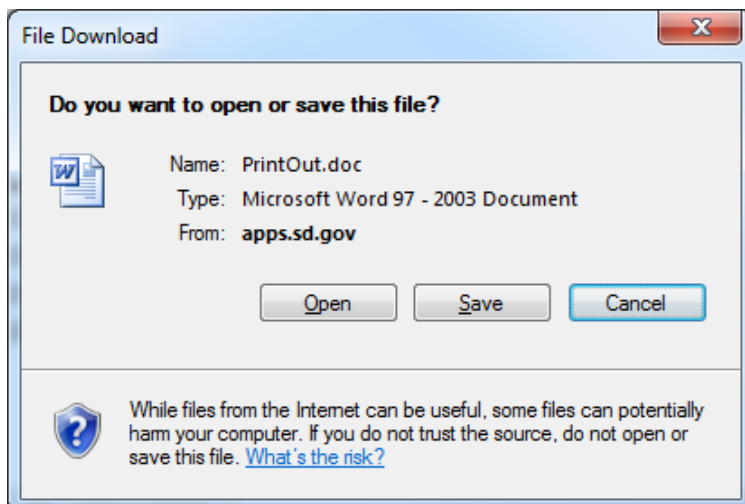


Figure 40. Create GRTS Word Doc.

NONPOINT SOURCE 319(H) PROJECT PROGRESS REPORT FORM

Federal Fiscal Year of Project: 2011 Today's Date: 10/15/2012

Has the workplan been amended since the last GRTS Report?: Yes No

Please select which reporting period. MidYear Report Annual Report Quarterly Report

Status: ON SCHEDULE

Project Title: Muddy Creek
 Report Dates: From: 10/01/2011 To: 09/30/2012
 Sponsor Name: Moody County CD
 Address: 202 East 3rd Ave
 City: Flandreau State: SD Zip: 57028
 Phone: 605-239-4635
 Email: jeremy.schelhaas@state.sd.us
 Prepared By: Jeremy Schelhaas

Milestones Completed

		Amount Achieved		Amount Expected	
		Since Last Period	Total	To Date	Total
Ag Waste System					
	Waste Management System - 312	2	3	2	2
Riparian Restoration/Protection					
	Riparian Area Management (ac) -	0	17	20	50

Overall Project Accomplishments

There has been a lot of progress in the AG waste Management systems This year. Two systems have been completed, and other producers have shown interest.

Objective/Tasks Accomplishments

Objective 1 Task 1 Ag Waste System. This Task is on Schedule. Two Systems directly along Muddy Creek have been installed. The two Producers are very happy with how they have turned out and are functioning as expected
 Objective 1 Task 2 Riparian Restoration/Protection. This Task is on schedule. Not much progress has been made this year on this BMP. High water in Muddy Creek has made more of a need for protection of the stream bank, and some people are showing more interest. All systems that have been installed previously are functioning as expected without any issues.

Conclusions

This project is moving forward, and is expected to exceed the expectations set for it. There will be more attention spent on informing the public on what options they have.

Pollutants	Location	Pollutant Reduction Target	Current Year Pollutant Reduction	Cumulative Pollutant Reduction Achieved (Numeric)	Unit	TMDL yes/no
Nitrogen	Mud Creek	60	433	150	Pounds per Year	No
Phosphorus	Muddy Creek	150	0	99	Pounds per Year	No

Wetlands/Streambanks/Shorelines

- Wetlands Restored
- Wetlands Created
- Streambank and Shoreline Protection
- Stream Channel Stabilization

Description	Current Year	Cumulative Total	Units
Stream Channel Stabilization	0.0	0.0	Acres
Streambank and Shoreline Protection	0.0	0.0	Acres
Wetlands Created	0.0	0.0	Acres
Wetlands Restored	0.0	0.0	Acres

9.0 Project Summary

When “Project Summary” is selected, a page similar to Figure 41 will appear. The right side of the page displays the project summary report. This report provides a quick overview of project activities. Use the scroll bar to view the information available using this report.

The items displayed include:

- Project Information, Grants Funds Allocated (including advances)
- BMP Funding Information
- BMP Milestone Information
- Non-Salary Information
- Salary Information
- Assessment Information

Muddy Creek						
Project Information						
Project Officer:	Jeremy Schelhaas		Coordinator:	Curt Hart		
Project Type:	Implementation		Control Number:	123-45		
Start Date:	07/21/2010		End Date:	09/30/2013		
Grants						
Fund Name	Category	Year	Amount			
319	Base	2003	\$100,000.00			
Total			\$100,000.00			
Advances						
Fund Name	Total	Amount Used	Amount Remaining			
319	\$20,000.00	\$65.00	\$19,935.00			
Total	\$20,000.00	\$65.00	\$19,935.00			
Funds Allocated						
Fund Name	Source	Reimbursable	Matching	Total Amount	Amount Allocated	Amount Used
319	Federal	Y	N	\$100,000.00	\$33,200.00	\$21,241.05
City of Mudvile	City	N	Y	\$30,000.00	\$30,000.00	\$2,126.00
Consolidated	State	Y	Y	\$45,000.00	(\$23,000.00)	\$31,187.95
EQIP	Federal	N	N	\$200,000.00	\$200,000.00	\$110,000.00
Local	Local	N	Y	\$60,000.00	\$60,000.00	(\$1.00)
Local cash	Local	N	Y	\$0.00	\$0.00	\$53,733.00
Total				\$435,000.00	\$300,200.00	\$218,287.00
BMP Funding Information						
BMP				Allocated	Used	Available
01-T1 - Air Waste System	319			\$1,200.00	\$15,600.05	(\$14,400.05)

Figure 41: Project Summary Report.

10.0 Trouble Shooting

Problem: Unable to log into Tracker.

Solution: User names and passwords are case sensitive, and most usernames start with a capital letter, and the initial password for a new user is “Password”. If this doesn’t work, the password can be reset to “Password” by DENR.

Problem: Cannot find expenses entered into Tracker when putting together a voucher.

Solution: Most of the time this is due to not selecting a fund type when setting up the voucher. Click on the Modify Voucher button to select the missing fund.

Problem: Cannot find items selected for a voucher on the voucher summary or detailed page.

Solution: This can occur for funds that are considered “other federal” or funds that are not reimbursable by DENR and don’t count as match. These items have been claimed on the voucher, and are used in other reports. If printout is desired, contact DENR.

Problem: Milestones and reductions entered into Tracker are not showing up on the GRTS report.

Solution: The most common reason for this occurring is that a Completion Date has not been entered for the BMP. This date can be seen in Figure 12 on page 9 of the manual.

Problem: Not sure what completion date to use.

Solution: In most cases the date that the BMP is completed, or is put in place, is the day to use. This date should not be filled until that day has been reached. In the case of BMPs like easements and RAM, it is the date when the contract starts since that is when load reductions would start taking place.

Problem: How to determine funds remaining.

Solution: This can be done by using the Project Summary page. To determine the amount of 319 a project has, look at the Total Amount and Amount Used under the Funds Allocated. Subtract the Amount Used from the Total Amount of 319. This amount includes any funds that have been entered into Tracker, even if they have not been vouchered, and any advances. This would apply to all the other funds allocated to the Project.