



Stony Brook University

# FAR BEYOND

---

**SEAWOLVES ESSENTIALS 2019-2020**

# What services does FSA provide?

*The Faculty Student Association (FSA) is a not-for-profit auxiliary services corporation that operates many of the non-academic services on the Stony Brook campus.*



# What are the benefits of the meal plan?



## Swipe, Eat, Enjoy

Swipe your ID card and enjoy “All You Care to Eat” options at East Side Dining and West Side Dining dine-in locations. Students living in Roth and Tabler with unlimited meal plans receive one meal exchange per day at Roth Café.



## Allergen Friendly

Dine-in locations accommodate special dietary needs plus all students can receive free nutrition counseling.



## Fresh And Healthy Choices

Healthy options throughout campus and the opportunity to try diverse menu offerings.



## Flexible Dining Dollars

Use the flexible dining dollars on your ID card to dine on the go at;

- Jasmine Asian Food Court and Market
- Student Activities Center (SAC) Food Court
- East Side Dining retail food concepts (Halal, Kosher, Caribbean, Pizza and Tex-Mex)
- Roth Café
- Starbucks
- East Side Emporium
- Market at West Side



## Eat, Study, Socialize

Use your guest passes included with your meal plan to bring a friend or visiting family member to dine-in locations



## Take Food To Go

You can choose the take-out option at either dine-in location once per day.

# First Year (new and transfer students) Resident Student Meal Plans

Wolfie Standard Plan	Wolfie Plus Plan	Wolfie Premium Plan
<i>Unlimited Meal Swipes</i>	<i>Unlimited Meal Swipes</i>	<i>Unlimited Meal Swipes</i>
6 dine-in guest passes	8 dine-in guest passes	10 dine-in guest passes
50 Dining Dollars	250 Dining Dollars	500 Dining Dollars
<b>Cost \$2,598 per semester</b>	<b>Cost \$2,804 per semester</b>	<b>Cost \$3,061 per semester</b>

Meal Exchange Add-On for Unlimited Plans Use at SAC, East Side and Roth	
<b>16 Meal Exchanges</b>	<b>\$100</b>
Only \$6.25 per swipe!	
<b>34 Meal Exchanges</b>	<b>\$200</b>
Only \$5.88 per swipe!	
<b>52 Meal Exchanges</b>	<b>\$300</b>
Only \$5.75 per swipe!	



# Meal Plan Terminology

## Dine-In locations

- Use a meal swipe at East Side or West Side dine-in and stay as long as you'd like!
- Try as many food options as you wish from all of the food platforms
- Continuous service: from am to pm

## If you live in Roth or Tabler Quad ...

- You can use one meal swipe per day at Roth Café for a preset retail menu option

## Take-out at Dine-In

- You can use **one meal swipe per day for take-out** in lieu of a meal at a dine-in

## Retail locations

- Use Dining Dollars to dine on the go
- Retail locations only accept Dining Dollars, cash, credit, Wolfie Wallet

## Dining Dollars

- Included with all unlimited meal plans
- Equivalent to \$1
- Add additional dining dollars any time



# Unlimited Meal Plans

- Unlimited access to two all you-care-to eat dine-in locations
- Dine-in locations open 20 hours/day
- Guest Chefs, Prime Night, Global Nights, Special Events



# What is a Meal Exchange?

Use a meal swipe for preset menu options at retail locations!

**Where can I use my meal exchange?**

## **SAC Food Court**

Deli, Stir-fry, Noodle Bowl, Skillets, Pizza, Salad Bar and grab and go options!

## **East Side Dining**

East Meets West Deli, Healthy by Nature, Halal NY, Grill and Pizza

## **Roth Cafe**

Subway, Smash n' Shake, Stir-Fry, Brunch All Day, Ramen and Tuscan made-to-order pasta





# Commuter/Apartment Meal Plans

## SAVE MONEY EVERY DAY!

<b>Commuter/Apartment 900</b>	<b>\$900</b>
\$900 dining dollars + <b>Bonus \$100 dining dollars</b> + 10 meal swipes	
<b>Commuter/Apartment 600</b>	<b>\$600</b>
\$600 dining dollars + <b>Bonus \$60 dining dollars</b> + 5 meal swipes	
<b>Commuter/Apartment 300</b>	<b>\$300</b>
\$300 dining dollars + <b>Bonus \$30 dining dollars</b>	
<b>Budget Plan</b>	
All Dining Dollars plan that you can open with \$20 and then replenish. <i>(Prepay for plan with cash or credit card)</i>	

Prices are per semester

## Great Benefits!

- Block Plans give you the flexibility to use meal swipes when you want!
- You get more dining dollars than the cost of the plan plus meal swipes to utilize at dine-in (all-you-care-to eat)!
- No sales tax!
- Dining Dollars rollover from fall to the spring semester.
- Door prices for dine-in:  
*Breakfast \$6.90 • Lunch/Brunch \$9.75  
 Dinner \$10.20 • Late Night \$8.15*



# Things to remember

- Choose the plan that best fits your schedule and your eating habits. **One size doesn't fit all!**
- **Dining dollars roll over from fall to spring but not summer or the following academic year.**
- **Options to change meal plan:**
  - upgrade anytime
  - downgrade during the first two weeks of the semester
- **All retail locations** accept dining dollars, Wolfie Wallet, cash and credit.
- To check their balance, students must set up an account online first before using the **Stony Brook Campus Card app.**

# Special Dietary Needs

**Kosher meals** are available upon request at both dine-in locations or students can customize their meal by ordering **24 hours in advance online.**

**Delancey Street Kosher Deli** at the Emporium at East Side Dining

**Halal options** are available at both dine-in locations.

**Halal NY** at East Side Dining



**Laura Martorano, Registered Dietitian**  
free nutrition counseling to all students

**Questions about dietary needs  
and food allergies?**

631.632.9979

[laura.martorano@stonybrook.edu](mailto:laura.martorano@stonybrook.edu)

**Eat Well** creations incorporate whole, naturally flavorful and nutritious foods prepared with healthful cooking methods.

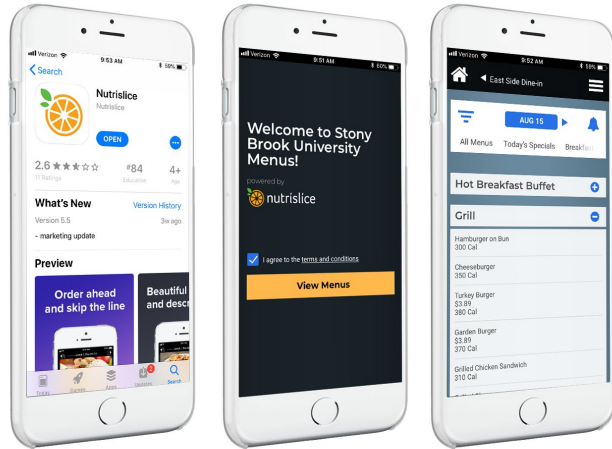


**Vegetarian** offerings contain no meat, fish or poultry, nor any meat products such as soup base.



**Vegan** offerings contain no meat, fish, eggs, milk or other animal-derived products such as honey.





- Save Time, View Menus Before Going to the Dining Location
- Apply Filters for Your Preferences
- Find Nutrition Content
- Special event and themed night notifications

# Wolfie Wallet

- Prepaid declining balance debit account on the student ID card
- Not part of the meal plan
- A safe and convenient way for students to:
  - 8% discount at on-campus dining locations
  - Use at Shop Red West in the Melville library
  - Buy food from off campus merchants
  - Vending machines
  - Mail packages in the residential mailroom



[stonybrook.edu/wolfiewallet](https://stonybrook.edu/wolfiewallet)

# Wolfie Wallet

Over 30 off campus vendors accept Wolfie Wallet

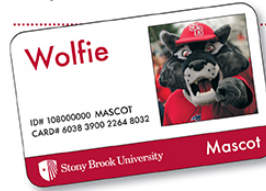
Some offer discounts and special promotions

- Stop and Shop
- Restaurants
- CVS Pharmacy

[stonybrook.edu/wolfiewallet](https://stonybrook.edu/wolfiewallet)

# Wolfie Wallet

**Wolfie Wallet** is the easy, safe and convenient way for the more than 35,000 Stony Brook University students, faculty and staff to make purchases at local shops or on campus using their Stony Brook ID card.



Specials and discounts are available at some stores. Check our website for weekly updates. If you are a merchant and would like to participate in the Wolfie Wallet program, visit us at [stonybrook.edu/wolfiewallet](https://stonybrook.edu/wolfiewallet)



## ACCEPTED HERE

- **Ancient Ginger**  
St. James **COMING SOON!**
- **Anthony's Coal Fired Pizza**  
Lake Grove
- **Applebee's**  
Lake Grove
- **Bagel Express**  
Setauket
- **Barito**  
Port Jefferson
- **The Bench**  
Stony Brook
- **Buffalo Wild Wings**  
Centerach and Miller Place
- **Burger King**  
Stony Brook
- **Cabo Fresh**  
Stony Brook
- **CVS Pharmacy**  
Setauket
- **Domino's Pizza**  
Stony Brook
- **Domo Sushi**  
Setauket
- **Fratelli's**  
Stony Brook
- **Friendly's**  
Stony Brook
- **Greek To-Go!**  
Stony Brook
- **The Greene Turtle**  
Smithtown
- **Jamba Juice**  
Stony Brook
- **L.I. Bagel Cafe**  
Stony Brook
- **Luigi's Pizzeria**  
Setauket
- **Mad Over Yogurt**  
Stony Brook **NEW!**
- **Margaritas Cafe**  
Port Jefferson Station
- **O Sole Mio**  
Stony Brook
- **The Pie**  
Port Jefferson
- **Pumpernickle's Deli**  
Setauket
- **Shake Shack**  
Lake Grove
- **The Steam Room**  
Port Jefferson
- **Stop & Shop**  
Centerach and Setauket
- **Strathmore Bagels**  
Stony Brook
- **Subway**  
Setauket

Wolfie Wallet cannot be used for the purchase of alcohol, tobacco or gift cards.

Participating merchants as of 5/13/19. Stony Brook University ©2019 in an affirmative action, equal opportunity educator and employer. 19031234

# Adding Money to Wolfie Wallet

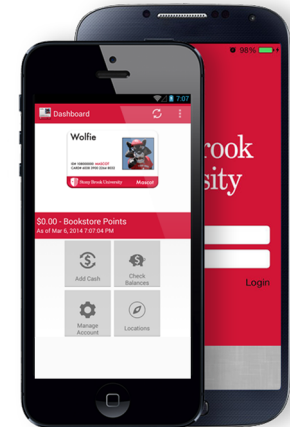
How do you add money to Wolfie Wallet?

1. Online at [stonybrook.edu/wolfiewallet](http://stonybrook.edu/wolfiewallet)
2. Cash-to-account machines
3. Stony Brook Campus Card app
4. Faculty Student Association office at East Side Dining

## The Stony Brook Campus Card App

The **Stony Brook University meal plan & Wolfie Wallet** app gives you the ability to **manage your funds** on your ID card *anywhere, anytime*.

- ✓ Check Your Balance
- ✓ Add Money
- ✓ Report Your Card Lost
- ✓ View Transaction History



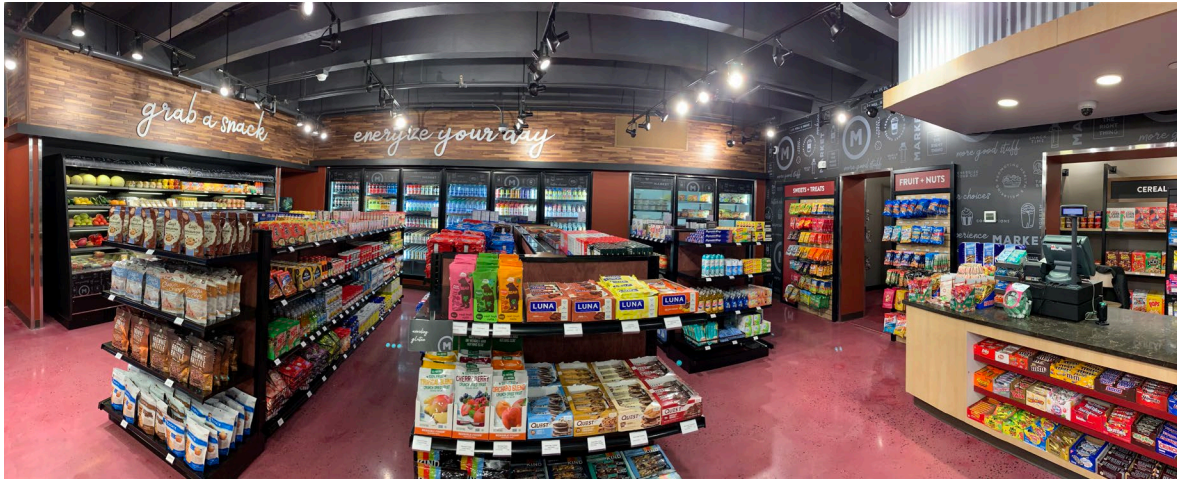
Requires iOS 5.0+.  
Optimized for iPhone 5.



Requires Android: 2.2+

# The Market at West Side

FSA won the 2019 Long Island Business News Real Estate, Architecture and Engineering Award for Top Education Renovation for the Market at West Side convenience store.



The 2,100 square-foot store features groceries, snacks, home essentials, coffee, local Long Island products, sweets and treats, cookware, healthy and beauty aids and more!



# Jasmine Market

FSA Receives National Award for Best Convenience Retail Concept at Jasmine



# FSA earns National Award for Sustainability

FSA is a proud recipient of the NACUFS 2019 National Sustainability Award for Outreach and Education (Bronze Award). Together, we continue to make Stony Brook University a greener campus!



# Sustainability Initiatives



**Freight Farm** grows lettuce hydroponically in a recycled shipping container! Radishes too!



**Composting** is a process that turns organic waste into nutrient-rich soil and diverts about 600-700 lbs. of pre-consumer food waste from the landfills each week.



**Reusable takeout containers** at East Side, West Side and Roth Food Court.



# Permaculture Gardens

*Provides healthy ingredients for campus dining.*



# New Teaching Kitchen Program

*Focuses on easy to prepare healthy eating techniques and menu items.*



# Connect with Campus Dining

## 1. Talk to a Manager

Managers are responsible for locations by neighborhood – they want to hear from you directly so they can keep doing what’s great, and make any issue right – immediately.

## 2. Text “TellSBUEats” with your comments to 82257

Every comment/question receives a direct response.

## 3. Follow us on social – four ways

For menus, specials, events and contests.

## 4. Website

[stonybrook.edu/dining](http://stonybrook.edu/dining)

**CONNECT WITH US!** We’d love to hear from you!



**SBU\_EATS**

**SBU EATS**





# Buying Textbooks and Course Materials

- Follett offers students **affordable textbook and course material options**, textbook rentals, ebooks and digital learning technologies.
- Log into SOLAR with your SBU ID and password and view your **class schedule** and **textbook summary**.
- Order online at **sbushopred.com** and ship to your home or get free in-store pick-up at Shop Red West in the Melville Library.





## SHOP RED CAMPUS STORES

### THE BEST PLACE FOR...

#### BOOKS

rent, digital,  
new, and used

#### GEAR

head to toe  
Seawolves

#### TECH

Apple®, laptops,  
tablets, accessories,  
and more

#### LIFE

gifts, supplies,  
and seasonal  
jobs



Stony Brook University

**SHOP RED WEST • SHOP RED EAST**

Shop online 24 hours a day at [sbushopred.com](http://sbushopred.com)



- Print and copy services
- Large format printing for posters, banners and signs
- Summer Storage
- Use Wolfie Wallet!



- Secure, convenient order pickup, located in the Melville library
- Easy returns on Amazon orders!

# Student Health Insurance Plan (United Healthcare)

- **Annual cost \$3,676.46 (8/16 - 8/15)** billed per semester enrolled at Stony Brook: Fall \$1,542 and Spring/summer \$2,134.46
- Covers pre-existing medical conditions and preventative care.
- Annual **deductible \$200** for an individual.
- Annual **out-of-pocket limit of \$3,000** which includes deductibles, copays and coinsurance.
- **Inpatient and outpatient mental health care.**
- **No copay or coinsurance for lab procedures** performed in a PCP office, specialist office and performed as outpatient hospital services.
- **No deductible applied to prescription drug coverage.**



**Please note: Office visits for Primary Care and Specialists have a \$35 copayment**

**Questions? Call 631-632-6054**

[stonybrook.edu/shs/insurance](https://stonybrook.edu/shs/insurance)

# Contact Information

[stonybrook.edu/fsa](https://stonybrook.edu/fsa)

[stonybrook.edu/dining](https://stonybrook.edu/dining)

[stonybrook.edu/bookstore](https://stonybrook.edu/bookstore)

[stonybrook.edu/shs/insurance](https://stonybrook.edu/shs/insurance)

FSA Services Office located at East Side Dining

631.632.6517