

Crashes & Persons in Crashes

- Crashes – Statewide
 - Statewide crashes by county and severity.....pp. 21-22
 - Crashes by highway class.....p. 23
 - Number of vehicles involved.....p. 23
 - Crashes by time (month, day, time of day).....p. 24
 - Lighting and weather conditions.....p. 25
 - Rural vs. urban crashes.....p. 26
- Crashes in Cities
 - Urban crashes by city and severity.....pp. 27-28
- Persons in Crashes
 - Persons in statewide crashes by county and injury severity.....pp. 29-30
 - Persons in urban crashes by city and injury severity.....pp. 31-32

CRASHES – STATEWIDE

Statewide Crashes by County & Crash Injury Severity											
County	Crash Injury Severity										Total Crashes
	Fatal		Serious		Minor		Possible		None		
	OHP	Police	OHP	Police	OHP	Police	OHP	Police	OHP	Police	
Adair	3		8		21	1	24	15	42	52	166
Alfalfa			4	1	8		7		13	5	38
Atoka	7	1	3	3	19	8	21	27	84	120	293
Beaver	1		4		8		13		41	1	68
Beckham	5		10	7	16	11	42	18	87	126	322
Blaine	10		19		21		16	1	87	25	179
Bryan	1	5	9	29	26	54	36	86	165	481	892
Caddo	8		25	1	49	4	41	10	169	62	369
Canadian	10	9	11	33	26	136	74	321	390	1229	2239
Carter	5	2	8	3	36	39	50	105	179	598	1025
Cherokee	6	2	10	2	56	12	47	56	121	235	547
Choctaw	6		9	3	17	4	17	19	55	50	180
Cimarron	2		1		5		8		22		38
Cleveland	4	14	13	75	54	442	91	800	397	2762	4652
Coal			2		9		12	1	38	8	70
Comanche	6	4	26	24	66	113	39	332	204	1339	2153
Cotton	2		2		18	1	11		78	13	125
Craig	1	1	2	1	15	6	29	19	104	56	234
Creek	14	5	16	10	63	48	122	91	173	292	834
Custer	5	1	8	4	25	24	27	35	159	162	450
Delaware	2		19	3	77	12	35	43	203	190	584
Dewey	2		5		7	3	4		34	1	56
Ellis	1		3		9		8		15	4	40
Garfield	5	2	11	14	20	85	23	155	96	1050	1461
Garvin	9	1	18		60	5	84	16	194	107	494
Grady	10	2	25	13	79	41	55	72	280	328	905
Grant	2		3		11		13	1	42	2	74
Greer			6		5		4		31		46
Harmon			3		2		1		14		20
Harper			2		3		4		18		27
Haskell	6		4	2	17	3	23	3	45	26	129
Hughes	4		7		7		11		44		73
Jackson	3		11	2	10	13	9	34	65	246	393
Jefferson	1		1		8		8		24	1	43
Johnston	4		7		8		33	9	74	30	165
Kay	4	2	12	13	23	32	68	57	183	338	732
Kingfisher	2		4		24	1	26	16	99	78	250
Kiowa	4		2		7		17		67	2	99
Latimer	2		9	1	21		8	7	38	24	110
LeFlore	4	4	19	6	60	30	33	69	132	257	614
Lincoln	9		20	1	63	6	65	13	158	64	399
Logan	6		5	1	34	4	75	20	242	134	521
Love	8		6		17		41	7	120	31	230
McClain	7	3	10	4	48	28	65	78	298	277	818

CRASHES – STATEWIDE

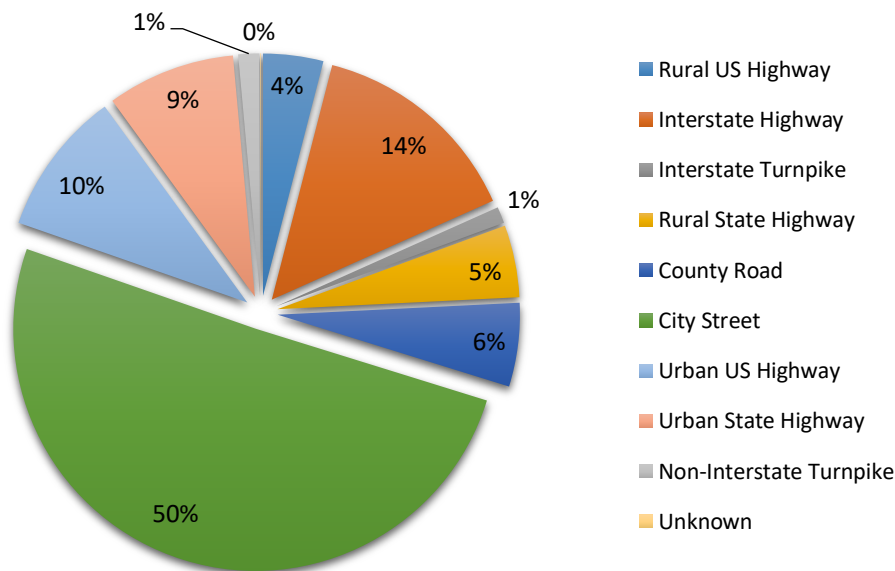
Statewide Crashes by County & Crash Injury Severity											
County	Crash Injury Severity										Total Crashes
	Fatal		Serious		Minor		Possible		None		
	OHP	Police	OHP	Police	OHP	Police	OHP	Police	OHP	Police	
McCurtain	7	3	25	2	31	5	59	20	193	121	466
McIntosh	8		9	2	18	2	38	6	128	47	258
Major	2		7		9		13	1	48	1	81
Marshall	1	1	13		13		19	7	78	43	175
Mayes	3	2	18	9	99	19	61	30	166	149	556
Murray	9		9	1	22	3	29	15	98	96	282
Muskogee	9	2	18	18	37	91	49	162	117	631	1134
Noble	3		5		26	3	37	2	169	27	272
Nowata	4	1	4	1	20	2	5	4	51	17	109
Okfuskee	2		4	1	13		25	8	105	23	181
Oklahoma	15	58	56	302	290	1402	747	3413	3729	12728	22740
Okmulgee	5	2	11	1	40	5	63	39	102	151	419
Osage	3	1	11	1	45	11	43	18	131	50	314
Ottawa	6	2	8	2	67	11	51	45	133	129	454
Pawnee	6	1	7	1	23	1	23	6	118	38	224
Payne	9		14	9	38	79	78	197	242	645	1311
Pittsburg	10	5	14	10	40	39	52	100	206	309	785
Pontotoc	10		23	2	14	8	43	9	178	27	314
Pottawatomie	10	7	28	20	91	53	74	111	225	496	1115
Pushmataha	5		11	2	17	3	16	4	47	23	128
Roger Mills	1		1		6		6		13		27
Rogers	12	3	17	25	139	53	115	115	276	494	1249
Seminole	10	1	8	3	32	13	41	18	146	94	366
Sequoyah	12		15	3	22	5	48	42	292	223	662
Stephens	7	4	9	9	33	46	26	83	86	300	603
Texas	2		8	2	7	4	16	20	91	170	320
Tillman	1	1			10		10	1	28	13	64
Tulsa	8	42	21	284	275	1435	401	2370	630	7922	13388
Wagoner	4	2	18	16	71	80	51	78	172	377	869
Washington	2	3	8	8	26	27	17	109	56	482	738
Washita	5		9		19		20		83		136
Woods	2		5	1	6		12	4	26	31	87
Woodward	1		2		25	2	25	17	50	161	283
	385	199	818	991	2802	4568	3753	9590	13337	36824	73267
Total	584		1809		7370		13343		50161		73267

OHP indicates crashes worked by the Oklahoma Highway Patrol. These crashes are generally on rural roads and highways. Police indicates crashes worked by agencies (police, sheriff, campus police, etc.) other than the Oklahoma Highway Patrol. These crashes are generally worked within municipalities.

CRASHES – STATEWIDE

Statewide Crashes Highway Class & Injury Severity						
Highway Class	Injury Severity					Total Crashes
	Fatal	Serious	Minor	Possible	None	
Rural US Highway	94	176	476	513	1682	2941
Interstate Highway	64	168	848	1822	7573	10475
Interstate Turnpike	7	20	121	151	498	797
Rural State Highway	129	207	594	669	1927	3526
County Road	84	251	715	766	2273	4089
City Street	123	680	3314	6557	26357	37031
Urban US Highway	49	141	593	1367	4922	7072
Urban State Highway	28	148	605	1312	4183	6276
Non-Interstate Turnpike	6	18	104	185	714	1027
Unknown				1	32	33
Total	584	1809	7370	13343	50161	73267

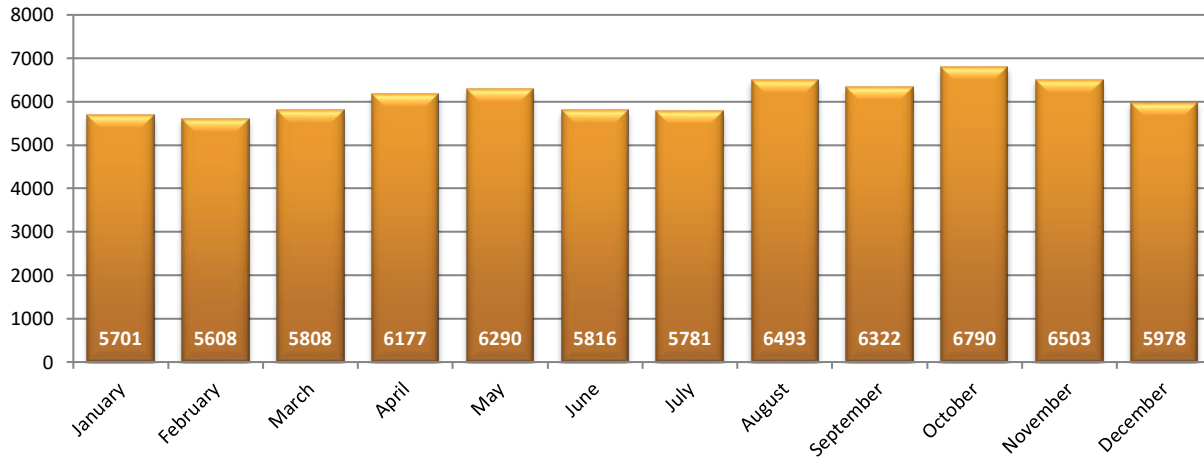
Percent of Crashes by Highway Class



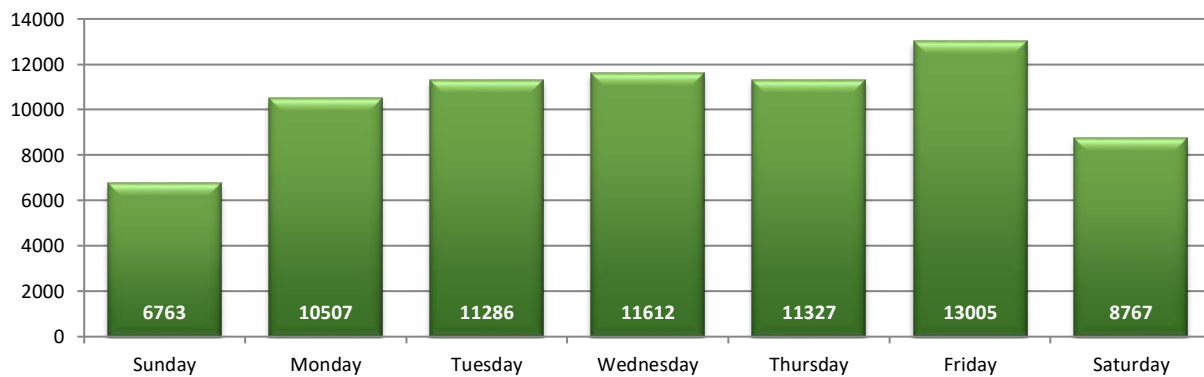
Statewide Crashes Crash Injury Severity & Number of Vehicles Involved						
Number of Vehicles	Injury Severity					Total Crashes
	Fatal	Serious	Minor	Possible	None	
Not Stated		1				1
One Vehicle	307	799	2308	2539	9660	15613
Two Vehicles	244	854	4258	9235	37728	52319
Three Vehicles	30	120	636	1307	2410	4503
Four or More Vehicles	3	35	168	262	363	831
Total	584	1809	7370	13343	50161	73267

CRASHES – STATEWIDE

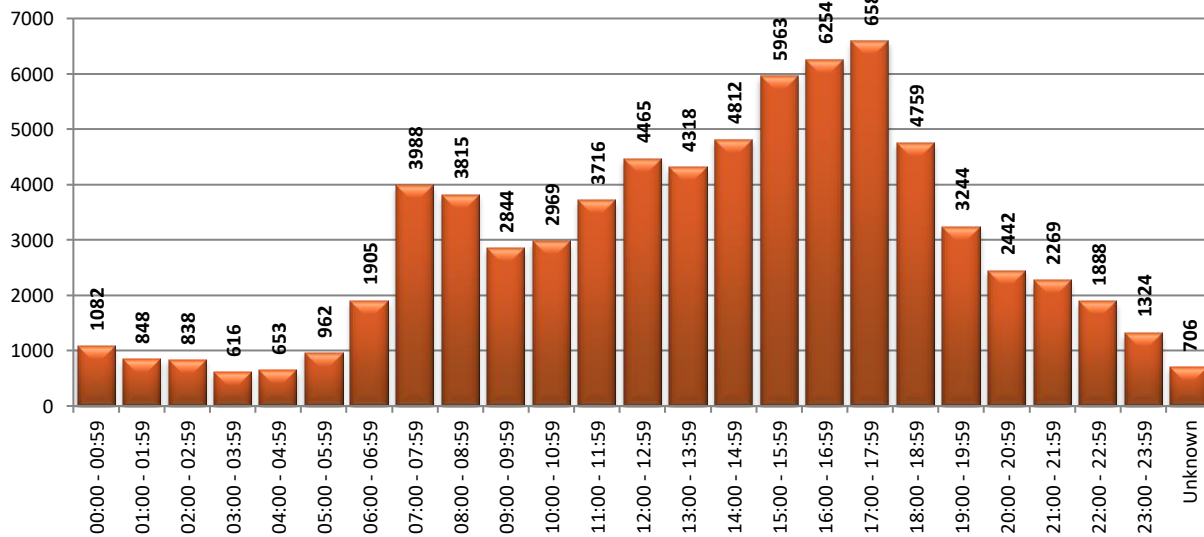
Crashes by Month



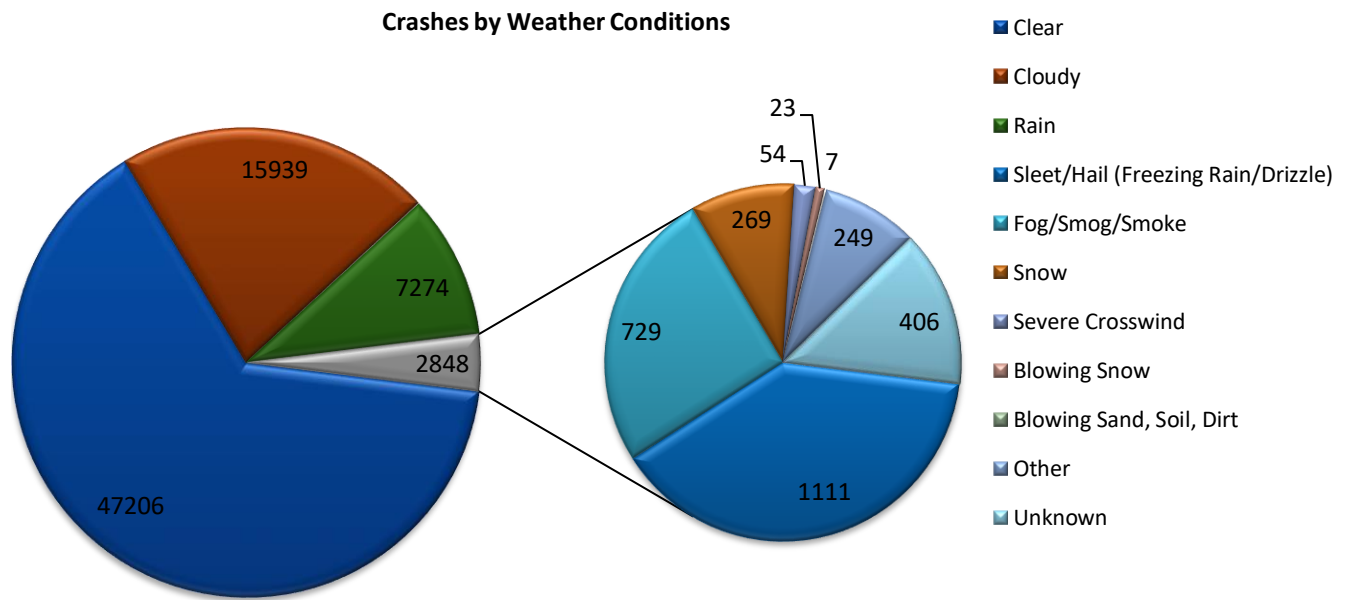
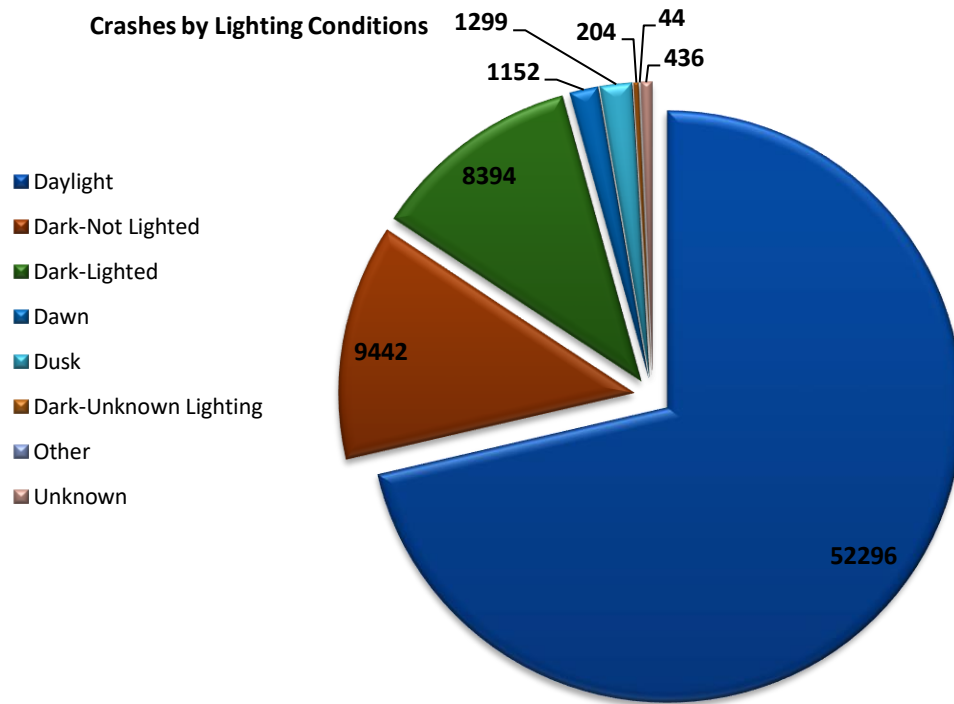
Crashes by Day of Week



Crashes by Time of Day

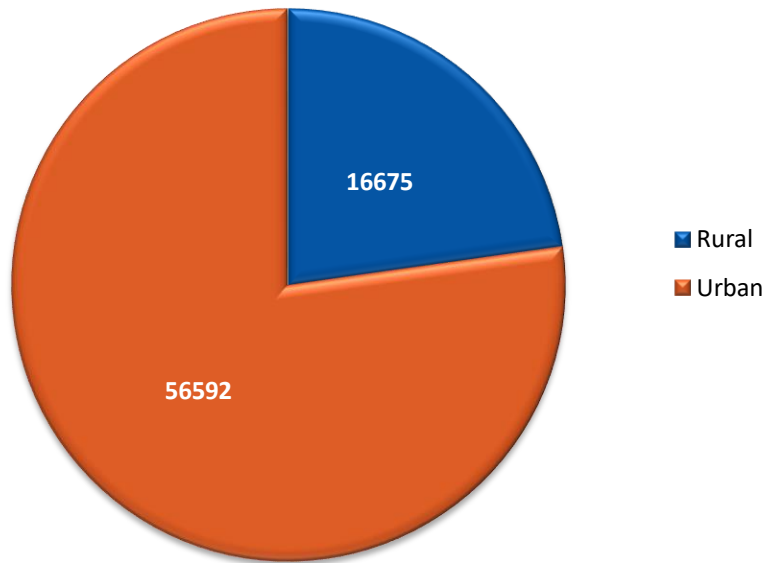


CRASHES – STATEWIDE

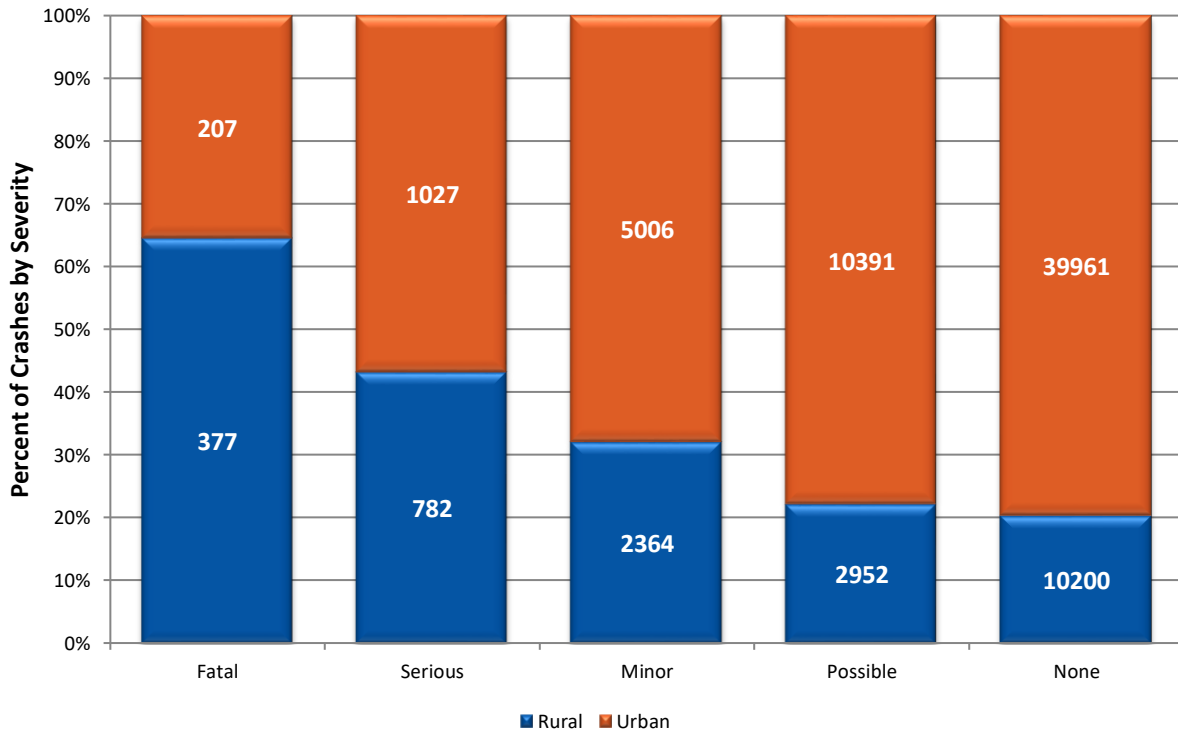


CRASHES – STATEWIDE

Rural vs. Urban Crashes



Rural vs. Urban Crashes by Injury Severity



CRASHES IN CITIES

Urban Crashes by City (5,000+ population) & Crash Injury Severity												
City	Crash Injury Severity										Total Crashes	
	Fatal		Serious		Minor		Possible		None			
	OHP	City PD	OHP	City PD	OHP	City PD	OHP	City PD	OHP	City PD		
Ada				2		8		1	9	8	25	53
Altus				2		13			34	4	242	295
Alva				1				1	4		31	37
Anadarko				1		4			9		59	73
Ardmore		1	1	2	5	34	6	100	33	563	745	
Bartlesville		3		6	2	26	1	102	2	442	584	
Bethany		1		9		19		46		213	288	
Bixby		3		5		27		73	2	232	342	
Blackwell		1			1	4		6	3	22	37	
Blanchard		1	2	1	1	1	1	12	3	53	75	
Broken Arrow		3		29	5	349	15	218	34	1193	1846	
Catoosa			3	18	10	7	22	5	38	54	157	
Chickasha		1		12	7	32	3	50	15	253	373	
Choctaw		1		3		1		22	1	104	132	
Claremore		2		4	12	33	4	94	13	358	520	
Clinton	1			1	1	5	2	14	15	50	89	
Collinsville				1	5	2	6	3	14	31	62	
Coweta				5	1	21	4	31	10	85	157	
Cushing			1			1	5	14	8	66	95	
Del City	2	1	4	9	7	37	21	37	75	210	403	
Duncan	1	3		7		41	2	59		245	358	
Durant		4		21	2	46	2	76	8	366	525	
Edmond		3	3	12	9	188	26	340	123	1048	1752	
El Reno	1		3	5	3	15	16	44	77	234	398	
Elk City			1	5	1	11		17	8	117	160	
Enid		2		14		85	1	153	7	1047	1309	
Glenpool		1		7		11	2	25	1	115	162	
Grove				2		7		35	1	143	188	
Guthrie				1	2	3	4	17	71	124	222	
Guymon				2		4		20	1	170	197	
Harrah				3		4		19		63	89	
Henryetta					1	1		12	6	33	53	
Holdenville	1						3		3		7	
Hugo			1	3	1	2	1	17	3	49	77	
Idabel		2		1	1	5		19	10	117	155	
Jenks		1	1	1	2	9	8	28	12	97	159	
Lawton		4		23	2	113	1	329	19	1317	1808	
Lone Grove		1				3		4	2	27	37	
McAlester		1		9	2	34		93	4	251	394	
Miami		2	1	2	2	10	5	44	10	128	204	
Midwest City		5	2	21	5	74	15	245	75	831	1273	
Moore			6	17	23	122	43	220	196	730	1357	
Muskogee	1	2		17	6	88	4	162	10	618	908	
Mustang		1		6		20		41		189	257	
Newcastle		2	1	3	14	10	18	53	47	173	321	

CRASHES IN CITIES

Urban Crashes by City (5,000+ population) & Crash Injury Severity											
City	Crash Injury Severity										Total Crashes
	Fatal		Serious		Minor		Possible		None		
	OHP	City PD	OHP	City PD	OHP	City PD	OHP	City PD	OHP	City PD	
Nichols Hills		1		1		2		5		39	48
Noble		2				7		18	1	61	89
Norman	1	4	3	47	19	219	38	348	164	1369	2212
Oklahoma City	17	58	50	259	277	1183	703	2946	3627	10810	19930
Okmulgee		1	1	1	3	4	5	26	6	113	160
Owasso		2		13	3	55	3	96	6	482	660
Pauls Valley	1	1	1		3	5	9	10	24	83	137
Piedmont				2		2		1	2	26	33
Ponca City				12		27	2	50	8	299	398
Poteau		4		4	1	26		48	2	127	212
Pryor		2		7		14	2	17	5	119	166
Purcell	1		2		7	14	13	5	63	40	145
Sallisaw				3	3	2	5	17	53	124	207
Sand Springs	1			9	9	19	6	49	26	163	282
Sapulpa	1	3	1	6	13	42	16	79	30	255	446
Seminole	1	1		3	1	13		18		94	131
Shawnee	3	5	5	17	19	44	19	93	70	423	698
Skiatook		1			2	6	4	14	6	33	66
Stillwater	1			8	4	76	5	178	9	542	823
Sulphur				1		3		11		55	70
Tahlequah		2		2		12	1	55	2	233	307
Tecumseh		2		3		9		14	2	57	87
The Village				1		15		29		97	142
Tulsa	4	32	14	225	165	1019	262	1906	402	5760	9789
Tuttle						5		14	2	52	73
Vinita		1		1	1	6	2	15	1	49	76
Wagoner		2		2	2	7		18	4	126	161
Warr Acres				7		20	1	62	1	182	273
Weatherford				3	2	19	3	21	15	108	171
Woodward			1			2	1	17	1	160	182
Yukon	1	1		3		30	2	64	17	301	419
	39	177	108	933	667	4437	1345	9199	5521	34900	57326
Total	216		1041		5104		10544		40421		57326

Unlisted cities did not report any crashes.

PERSONS IN CRASHES

Persons in Statewide Crashes by County & Injury Severity													
County	Person Injury Severity												Total Persons
	Fatal		Serious		Minor		Possible		None		Unknown		
	OHP	Police	OHP	Police	OHP	Police	OHP	Police	OHP	Police	OHP	Police	
Adair	4		8		30	1	29	18	124	107	6	7	334
Alfalfa			4	1	12		11	1	25	7		2	63
Atoka	9	1	3	3	21	11	32	39	209	248	5	11	592
Beaver	1		4		10		15		86	1	8	1	126
Beckham	6		14	9	28	18	73	22	223	236	6	27	662
Blaine	11		23		33		26	1	195	41	4	8	342
Bryan	1	6	10	34	38	76	52	136	368	1476	13	69	2279
Caddo	10		33	1	64	6	74	12	402	84	19	30	735
Canadian	10	10	11	38	32	177	123	511	921	3050	57	284	5224
Carter	5	2	13	3	42	52	72	151	404	1193	16	102	2055
Cherokee	7	2	13	2	87	15	73	83	382	521	11	19	1215
Choctaw	6		13	3	33	7	33	21	130	122	4	17	389
Cimarron	2		3		6		10		48		1		70
Cleveland	4	14	16	84	103	587	142	1209	1145	6513	63	521	10401
Coal			2		9		14	1	97	14		2	139
Comanche	7	4	35	26	103	143	63	486	478	2558	22	396	4321
Cotton	2		2		23	1	13		152	23	8		224
Craig	1	1	3	4	16	8	54	21	260	110	11	22	511
Creek	15	6	24	11	90	59	215	141	602	640	24	70	1897
Custer	7	1	12	5	28	29	37	64	357	319	10	36	905
Delaware	2		25	3	110	13	42	67	428	392	33	24	1139
Dewey	2		6		7	4	5		73	4	1		102
Ellis	1		3		14		16		37	5	1	1	78
Garfield	5	2	12	16	28	115	35	245	241	1894	6	300	2899
Garvin	12	1	23		83	5	145	22	557	203	33	14	1098
Grady	10	3	32	17	104	60	91	105	660	686	31	54	1853
Grant	2		3		15		16	1	72	5	1		115
Greer			6		5		9		60		1		81
Harmon			3		4		3		28		2		40
Harper			2		3		5		30		1		41
Haskell	6		5	2	26	3	27	4	115	49	4	6	247
Hughes	4		7		14		20		101		1		147
Jackson	4		19	2	22	15	16	54	126	414	5	74	751
Jefferson	1		3		9		11		45		1	1	71
Johnston	5		8		13		43	13	121	53	6	9	271
Kay	4	2	13	14	30	48	131	86	408	609	25	87	1457
Kingfisher	5		6		30	1	42	17	223	165	9	10	508
Kiowa	5		2		9		25		131			4	176
Latimer	2		9	1	26		12	15	79	49	2	2	197
LeFlore	4	4	26	9	79	51	55	109	352	529	9	32	1259
Lincoln	9		24	1	95	7	119	23	453	131	16	9	887
Logan	9		5	1	40	5	108	22	569	240	26	33	1058
Love	8		8		26		67	10	332	44	19	19	533
McClain	7	3	18	4	77	40	116	132	720	564	43	48	1772
McCurtain	7	3	30	12	45	5	83	29	452	201	26	27	920

PERSONS IN CRASHES

Persons in Statewide Crashes by County & Injury Severity													
County	Person Injury Severity												Total Persons
	Fatal		Serious		Minor		Possible		None		Unknown		
	OHP	Police	OHP	Police	OHP	Police	OHP	Police	OHP	Police	OHP	Police	
McIntosh	8		11	2	29	4	55	10	310	84	8	9	530
Major	2		10		13		20	1	111	3	1		161
Marshall	1	1	14		19		29	9	177	75	11	13	349
Mayes	3	2	20	14	142	30	100	60	448	319	19	14	1171
Murray	10		13	1	35	4	48	27	265	174	8	28	613
Muskogee	9	2	26	20	57	137	83	287	320	1241	18	145	2345
Noble	3		7		31	4	64	4	334	44	16	2	509
Nowata	4	1	6	1	25	6	6	5	125	32	5	6	222
Okfuskee	2		6	1	16		37	11	222	41	11	5	352
Oklahoma	18	61	62	353	359	1859	1034	5383	10588	33081	724	4502	58024
Okmulgee	5	2	15	1	67	6	90	48	266	285	15	39	839
Osage	4	1	13	1	59	13	57	23	286	105	19	24	605
Ottawa	8	2	11	2	86	13	94	68	432	276	20	33	1045
Pawnee	7	1	13	1	28	1	36	7	293	73	16	3	479
Payne	12		20	9	58	101	137	287	626	1470	22	65	2807
Pittsburg	10	6	19	14	50	54	85	159	440	701	24	36	1598
Pontotoc	11		35	2	26	12	60	12	442	65	21	2	688
Pottawatomie	11	8	29	23	137	75	147	172	649	1074	22	93	2440
Pushmataha	5		14	2	20	3	25	5	114	42		8	238
Roger Mills	1		2		6		11		22		2		44
Rogers	13	3	21	34	224	80	199	173	837	1051	23	76	2734
Seminole	12	1	11	5	46	16	75	29	325	193	25	23	761
Sequoyah	12		19	4	31	8	66	54	747	400	15	76	1432
Stephens	8	5	13	13	40	68	48	147	209	632	8	54	1245
Texas	2		14	2	14	6	21	23	200	300	4	42	628
Tillman	1	1			11		13	1	59	14		8	108
Tulsa	8	45	22	335	350	1936	641	3656	2225	22830	109	2889	35046
Wagoner	4	2	23	19	109	115	75	137	459	763	12	61	1779
Washington	2	3	12	9	43	36	31	161	219	684	3	348	1551
Washita	5		15		26		35		197		7		285
Woods	2		6	1	10		16	5	53	58	1	5	157
Woodward	3		2		31	2	40	28	144	458	4	15	727
	428	212	1048	1175	3920	6151	5881	14863	35165	90068	1783	11002	171696
Total Persons	640		2223		10071		20744		125233		12785		171696

OHP indicates crashes worked by the Oklahoma Highway Patrol. These crashes are generally on rural roads and highways. Police indicates crashes worked by agencies (police, sheriff, campus police, etc.) other than the Oklahoma Highway Patrol. These crashes are generally worked within municipalities.

PERSONS IN CRASHES

Persons in Urban Crashes by City & Injury Severity													
City	Person Injury Severity												Total Persons
	Fatal		Serious		Minor		Possible		None		Unknown		
	OHP	City PD	OHP	City PD	OHP	City PD	OHP	City PD	OHP	City PD	OHP	City PD	
Ada				2		12	1	12	29	61	1	2	120
Altus				2		15		54	8	407		74	560
Alva				1			1	5	1	58		5	71
Anadarko				1		6		11		80		29	127
Ardmore		1	1	2	5	44	8	144	71	1135	2	95	1508
Bartlesville		3		7	6	35	2	149	12	625		332	1171
Bethany		1		10		30		67		424		57	589
Bixby		4		8		33		125	4	521		37	732
Blackwell		1			1	4	3	9	9	41	1	4	73
Blanchard		1	8	1	3	1	2	14	4	97	2	11	144
Broken Arrow		3		33	5	504	22	324	56	2664	6	221	3838
Catoosa			3	25	12	11	31	7	123	116	2	18	348
Chickasha		1		16	12	47	3	67	31	550	1	39	767
Choctaw		1		4		1		32	2	190		22	252
Claremore		2		4	23	45	8	135	55	781		40	1093
Clinton	1		1	1	1	6	3	28	25	98	2	16	182
Collinsville				1	5	2	8	3	25	50	2	10	106
Coweta				7	1	28	5	59	33	169		20	322
Cushing			1		1	1	8	17	29	113	1	19	190
Del City	2	1	4	9	8	48	30	63	232	406	17	72	892
Duncan	1	4		10		56	3	110	6	528		39	757
Durant		4		25	3	62	2	119	21	1134	3	44	1417
Edmond		3	4	14	13	256	37	554	374	2540	22	79	3896
El Reno	1		3	5	4	16	34	65	189	405	11	59	792
Elk City			1	6	2	18	1	20	19	218		24	309
Enid		2		16		115	1	243	23	1887	1	300	2588
Glenpool		1		10		17	3	34	3	229	1	22	320
Grove				2		7		53	2	305		11	380
Guthrie				1	2	4	4	18	146	224	5	26	430
Guymon				2		6		23	1	300		42	374
Harrah				3		8		26		132		17	186
Henryetta					3	1		16	10	66	1	10	107
Holdenville	1						6		10				17
Hugo			1	3	1	3	2	19	10	120	1	17	177
Idabel		2		6	1	5		27	23	195	1	24	284
Jenks		1	1	1	2	13	17	36	30	222	3	11	337
Lawton		4		25	2	142	1	483	32	2518	2	391	3600
Lone Grove		1				3		5	5	47		6	67
McAlester		1		13	2	43	1	147	9	587	2	26	831
Miami		2	1	2	2	11	9	67	20	274	1	33	422
Midwest City		5	2	24	6	97	18	362	176	1756	10	172	2628
Moore			6	18	47	160	55	335	589	1657	30	147	3044
Muskogee	1	2		19	10	133	8	286	32	1225	2	142	1860
Mustang		1		7		28		61		418		24	539
Newcastle		2	1	3	22	13	31	82	149	369	12	24	708

PERSONS IN CRASHES

Persons in Urban Crashes by City & Injury Severity													
City	Person Injury Severity												Total Persons
	Fatal		Serious		Minor		Possible		None		Unknown		
	OHP	City PD	OHP	City PD	OHP	City PD	OHP	City PD	OHP	City PD	OHP	City PD	
Nichols Hills		1		1		2		5		82		2	93
Noble		2				7		28	2	124		9	172
Norman	1	4	3	53	27	304	61	529	442	3116	32	185	4757
Oklahoma City	20	62	55	307	342	1548	977	4632	10216	29642	695	4315	52811
Okmulgee		1	1	1	5	5	8	31	26	211	1	27	317
Owasso		2		16	3	72	4	128	16	1057		54	1352
Pauls Valley	1	1	1		4	5	15	12	78	164	4	11	296
Piedmont				2		2		2	3	44		6	59
Ponca City				13		42	4	73	16	547		77	772
Poteau		4		6	1	46	1	76	8	308		9	459
Pryor		2		12		22	4	35	12	256		4	347
Purcell	1		3		14	22	20	15	142	81	9	5	312
Sallisaw				4	3	5	6	25	150	212	1	43	449
Sand Springs	1			11	9	24	12	76	55	525	4	21	738
Sapulpa	1	4	2	6	15	51	23	122	97	549	5	62	937
Seminole	1	1		5	2	16	4	29	3	193		23	277
Shawnee	3	6	5	19	29	65	38	149	180	942	7	70	1513
Skiatook		1			3	7	7	20	18	73	1	6	136
Stillwater	1			8	9	98	10	264	36	1293	3	40	1762
Sulphur				1		4		22		112		12	151
Tahlequah		2		2		15	1	81	9	518		19	647
Tecumseh		2		4		10		18	4	102		19	159
The Village				1		20		48		200		31	300
Tulsa	4	34	14	261	216	1351	418	2972	1528	17887	75	2549	27309
Tuttle						7		25	4	89		13	138
Vinita		1		4	1	8	3	17	2	98		16	150
Wagoner		2		3	2	12		30	11	240		13	313
Warr Acres				8		27	1	123	6	428		39	632
Weatherford				4	2	23	3	36	36	212	2	20	338
Woodward			1			2	1	28	5	455		14	506
Yukon	1	1		3		38	4	101	43	671	2	25	889
Total	42	187	123	1104	892	5950	1993	14268	15776	86373	986	10552	138246
	229		1227		6842		16261		102149		11538		138246