

1972

SECTION V

PARTS LISTS

The Parts Lists and Illustrations, Figures 5-1 through 5-14, indicate all parts used in the four basic models of the snowmobile, and all currently available engine and carburetor options. If parts are not common to all models, the differences are indicated in the Parts Lists.

Page 5-2 shows a serial number code for determining, from the machine's identification tag, the exact configuration of the snowmobile and the supplied parts.

The first column of the parts list indicates the item number of the parts location drawing. The second column is the Chaparral Industries part number, and the third is the description of the part.

Please order spare parts and replacements using both the part number and the full description. Note procedure and order form on page 5-51 and 5-52 for terms and standard packaging of bulk items.

The fourth column indicates the number of parts used in each assembly.

The fifth column, flat rate time, is the amount of time, in tenths of an hour, that removal and replacement of the part should require. This figure is the only time which Chaparral Industries will accept as a labor charge under warranty claims (See Section One). Do not compound flat rate time. Each time shown represents complete removal and replacement time, and includes removal of mounting hardware or other parts which must be removed for access.

RETURN AUTHORIZATION PROCEDURE

In the past, we have received many parts returned for credit without sufficient justification. As a result we are now instituting a new return authorization procedure. We will supply all distributors or dealers with a five-part snapout form which must be filled out completely by the dealer and submitted to Chaparral prior to shipment of the part.

If the return is justified, Chaparral Industries will return to the dealer or distributor one approved copy of the request along with a red shipping tag which will carry the same serial number as the form.

IMPORTANT

EFFECTIVE IMMEDIATELY, NO RETURNED GOODS WILL BE ACCEPTED BY CHAPARRAL INDUSTRIES UNLESS THE RED RMA TAG IS ATTACHED, AND THE FREIGHT HAS BEEN PREPAID.

If the return is not justified, a copy of the request form will be returned to indicate the reason for the rejection.

Copy disposition:

1. Retained for Chaparral office records.
2. Retained for Chaparral Inspection.
3. Retained for Chaparral Receiving.
4. To be returned to the dealer or distributor showing approval or disapproval.
5. To be retained by the originating dealer or distributor.

Pages 5-53 through 5-66 contain a straight numerical parts list showing the retail prices of all parts. These prices supersede all other printed prices that utilize the same part number.

Also included are the Dealer's Parts Kit, the Chaparral Standards List, the bulk hardware list for all snowmobiles, and the Chaparral Engine Parts List and Prices.

MODEL	<input type="text"/>
DISPLACEMENT	<input type="text" value="CC"/>
SERIAL NO.	<input type="text"/>

- SKYLARK
- FIREBIRD
- FIREBIRD SS
- THUNDERBIRD

Manufacturer	Displacement
C248	(248 CCW)
H292	(292 HIRTH)
H338	(338 HIRTH)
C339	(339 CCW)
C398	(398 CCW)
F398	(398 Chaparral)
H399	(399 HIRTH)
S432	(432 SACHS)
F438	(438 Chaparral)
H438	(438 HIRTH)
H650	(650 HIRTH)

- 01001 thru 10000 - Skylark
- 10001 thru 20000 - Firebird
- 20001 thru 30000 - Firebird SS
- 30001 thru 40000 - Thunderbird

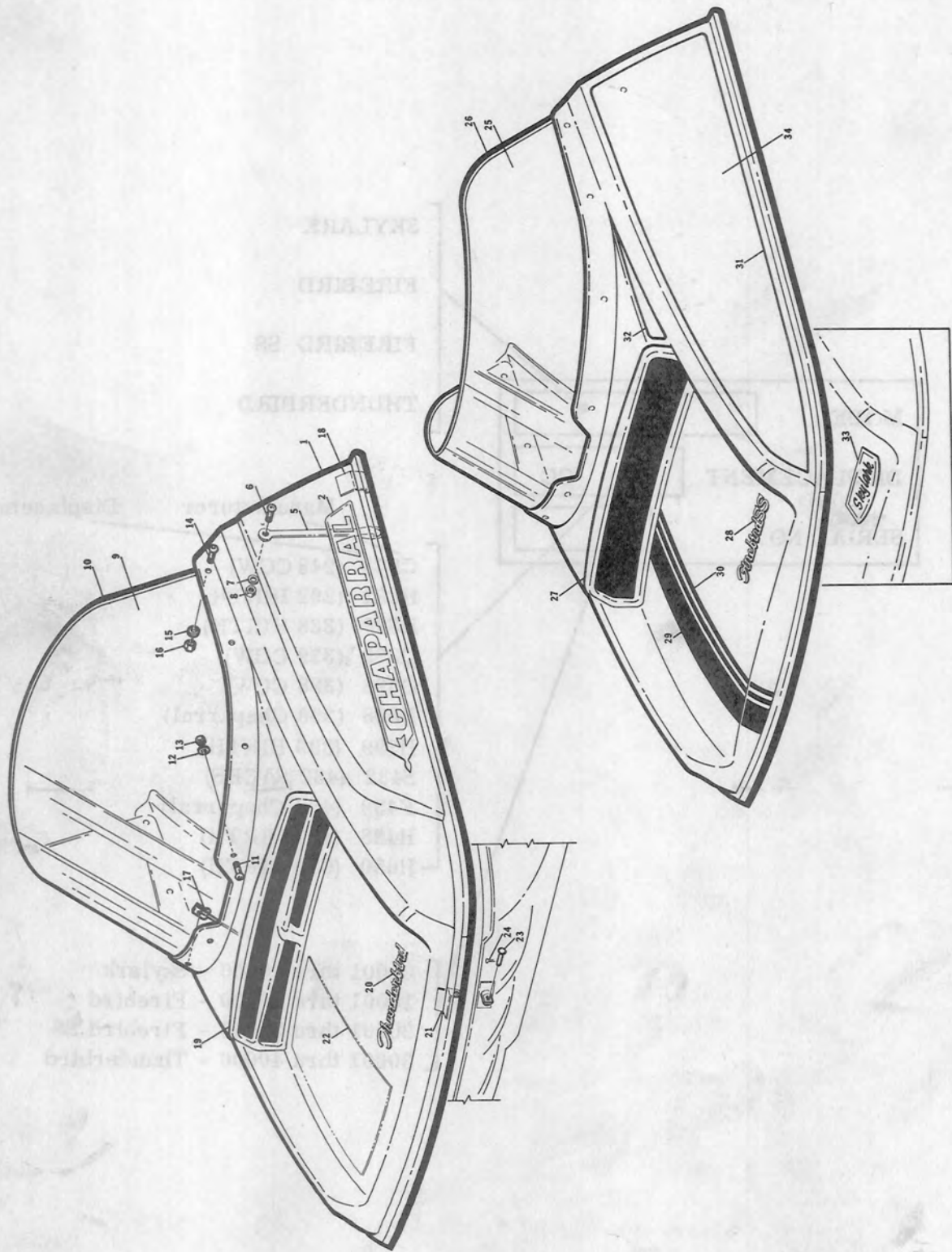


FIGURE 5-1. HOOD ASSEMBLY

Figure 5-1

HOOD ASSEMBLY

ITEM NO.	PART NO.	DESCRIPTION	QTY. PER ASSY.	FLAT RATE TIME
1	42396	Hood, Thunderbird	1	0.3
2	41397-1	Decal, L. H.	1	
	41397-2	Decal, R. H.	1	
3		Items 3 and 4		
4		No longer used.		
5	31403	Hold-down Assembly	2	
6	M22-20	Screw	2	
7	W01-06	Washer	2	
8	N06-06	Nut	2	
9	31414-1	Windshield (Thunderbird, Firebird and Skylark)	1	0.2
10	31415-1	Windshield Trim	1	
11	M22-10	Screw	4	
12	W01-06	Washer	4	
13	N06-06	Nut	4	
14	M22-08	Screw	4	
15	W01-06	Washer	4	
16	N06-06	Nut	4	
17	41381	Cable	1	
18	31406	Guide, Hood	2	
19	41410	Grill	1	0.2
20	42413	Nameplate (Thunderbird)	1	
	41493	Nut	3	
21	41097-1	Hinge Fitting, Hood	1	
	41097-2	Hinge Fitting, Hood	1	
22	31407	Aluminum Foil	1	
23	41604	Clevis Pin	2	
24	P26-12	Cotter Pin	2	
25	31414-3	Windshield (Firebird SS only)	1	0.2
26	40415	Windshield Trim (Firebird SS only)	1	
27	41411	Grill (Firebird SS only)	1	
28	40413-1	Nameplate (Firebird SS)	1	
	40413-2	Nameplate (Firebird)	1	
29	40390-5	Tape	1	
30	40390-5	Tape	2	
31	40390-3	Tape, L. H.	1	
	40390-3	Tape, R. H.	1	
32	40390-1	Decal, Side L. H.	1	
	40390-2	Decal, Side R. H.	1	
33	31413-1	Decal	1	
34	31396	Hood (Firebird, Firebird SS, and Skylark)	1	

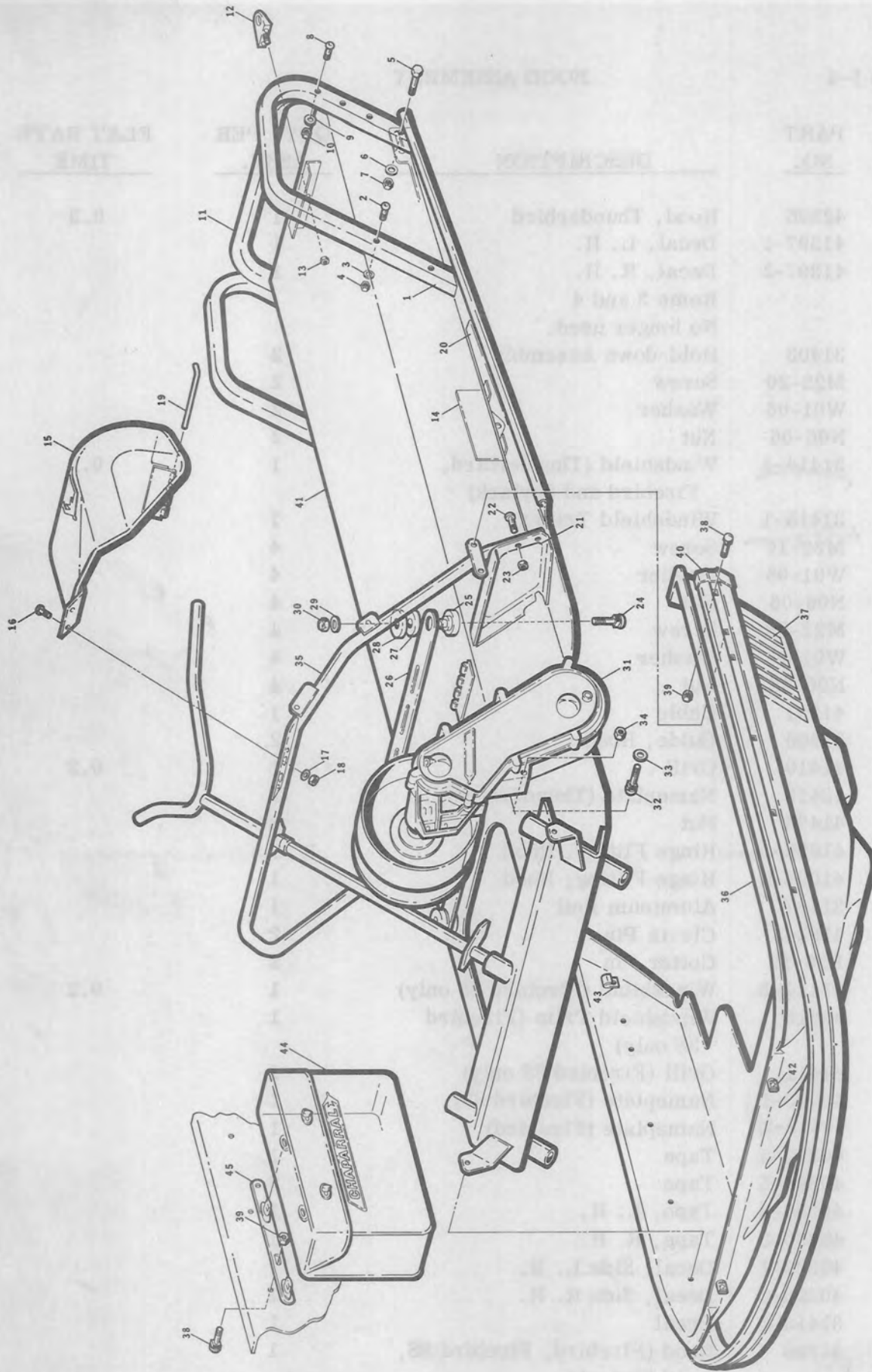


FIGURE 5-2. CHASSIS AND PAN ASSEMBLY

Figure 5-2

CHASSIS AND PAN ASSEMBLY

ITEM NO.	PART NO.	DESCRIPTION	QTY. PER ASSY.	FLAT RATE TIME
1	41122	Bumper, Side	2	0.2
2	M20-20	Screw	6	
3	W01-06	Washer	6	
4	N06-06	Nut	6	
5	B05-26	Bolt	2	
6	W01-07	Washer	2	
7	N06-07	Nut	2	
8	M20-28	Screw	2	
9	W01-07	Washer	2	
10	N14-06	Nut	2	
11	41121	Rear Bumper (Firebird)	1	
	42121	Rear Bumper (Thunderbird)	1	
12	31125	Hitch, Rear	1	0.1
	31124	Hitch Support	1	
13	N06-08	Nut	1	
14	31006	Bogie Hanger	6	0.2
15	41443-5	Clutch Cover (with Sachs 440 engine)	1	0.2
	41443-3	Clutch Cover (Chaparral engines)	1	
	41443-1	Clutch Cover (Hirth and CCW engines)	1	
16	M04-11	Machine Screw	2	
17	W06-01	Washer	2	
18	N15-06	Nut	2	
19	41446	Hinge Pin	1	
20	41439-1	Foot pad, L.H. (Firebird)	1	0.3
	41439-1	Foot pad, R.H. (Firebird)	1	0.3
	42439-1	Foot pad, L.H. (Thunderbird)	1	0.3
	42439-2	Foot pad, R.H. (Thunderbird)	1	0.3
21	41440-1	Foot pad, L.H. (Firebird)	1	0.3
	41440-2	Foot pad, R.H. (Firebird)	1	0.3
	42440-1	Foot pad, L.H. (Thunderbird)	1	0.3
	42440-2	Foot pad, R.H. (Thunderbird)	1	0.3
22	M07-20	Screw	4	
23	N06-06	Nut	4	
24	B18-32	Bolt	4	
25	41090	Sleeve and Isolator Assembly	4	
26	41085	Mount, Motor	2	0.5
	42085	Mount, Motor (Thunderbird)	2	0.5
27	41083	Isolator, Motor Mount	4	
28	41089	Flanged Washer	4	
29	W02-08	Washer	4	
30	N06-08	Nut	4	

ITEM NO.	PART NO.	DESCRIPTION	QTY PER ASSY.	FLAT RATE TIME
31	41128-1, -3	Chain Case	1	1.0
	31128	Gearbox (Skylark only)	1	1.0
32	B18-32	Bolt	2	
33	W01-08	Washer	2	
34	N06-08	Nut	2	
35	39115	Tiller Support Weldment (Skylark and Firebird SS)	1	
	41115	Tiller Support Weldment (Firebird and Thunderbird)	1	
36	41095	Pan Assembly (Skylark and Firebird SS)	1	1.0
	42095	Pan Assembly (Firebird and Thunderbird)	1	1.0
37	41416-1	Decal, Reflective	1	
	41416-2	Decal, Reflective	1	
38	B20-21	Bolt	12	
39	N06-06	Nut	12	
40	41100	Front Bumper	1	0.2
41	39001	Chassis Assembly (Skylark)	1	
	40001	Chassis Assembly (Firebird SS)	1	
	41001	Chassis Assembly (Firebird)	1	
	42001	Chassis Assembly (Thunderbird)	1	
	31002	. Frame (Skylark, Firebird, Firebird SS)	1	
	32002	. Frame (Thunderbird)	1	
	41003-1	. Stiffener, L.H.	1	
	41003-2	. Stiffener, R.H.	2	
	31005	. Bulkhead, Front	1	1
	32005	. Bulkhead, Front (Thunderbird)	1	
	31007-1	. Support, Foot L.H. (Firebird, Firebird SS and Skylark)	1	0.3
	31007-2	. Support, Foot R.H. (Firebird, Firebird SS and Skylark)	1	0.3
	32007-1	. Support, Foot L.H. (Thunderbird)	1	0.3
	32007-2	. Support, Foot R.H. (Thunderbird)	1	0.3
	31008-1	. Spindle Channel Assembly (Firebird, Firebird SS and Skylark)	1	1.5
	31008-3	. Spindle Channel Assembly	1	
	32008	. Spindle Channel Assembly (Thunderbird)	1	

<u>ITEM NO.</u>	<u>PART NO.</u>	<u>DESCRIPTION</u>	<u>QTY. PER ASSY.</u>	<u>FLAT RATE TIME</u>
	31120-1	. Bracket, Bumper	1	0.2
	31120-2	. Bracket, Bumper	1	
	31009	. Spindle Support Weldment (Firebird, Firebird SS and Skylark)	1	
	32009	. Spindle Support Weldment (Thunderbird)	1	
	31017	. Spacer, Spindle (Firebird, Skylark, Thunderbird)	4	
	31017	. Spacer, Spindle (Firebird SS)	2	
	32016	. Bulkhead, Rear (Firebird)	1	
	32016	. Bulkhead, Rear (Thunderbird)		
	39016	. Bulkhead, Rear (Skylark)	1	
	40016	. Bulkhead, Rear (Firebird SS)	1	
42	31099	Hood Latch	2	
43	41459	Clip	2	
44	31687-1, -2	Saddle Bag (R.H.) (L.H.)	2	
45	41675	Mounting Bracket (R.H.) (L.H.)	2	

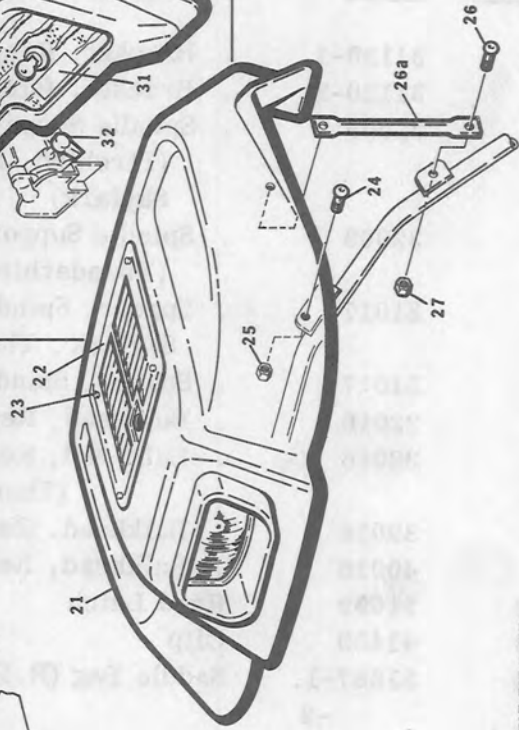
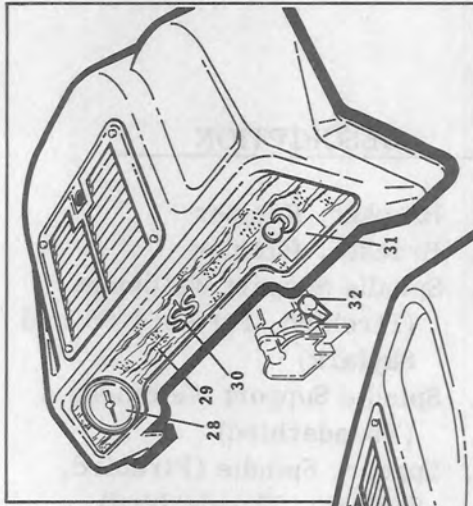
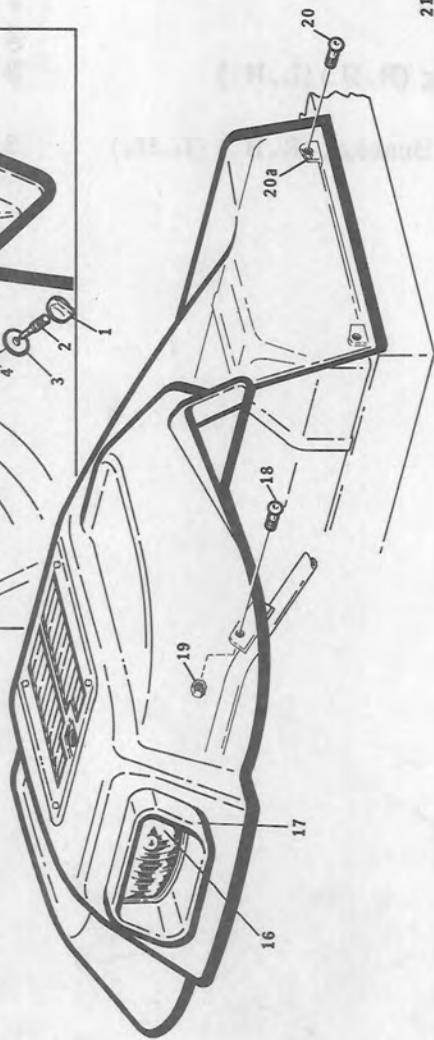
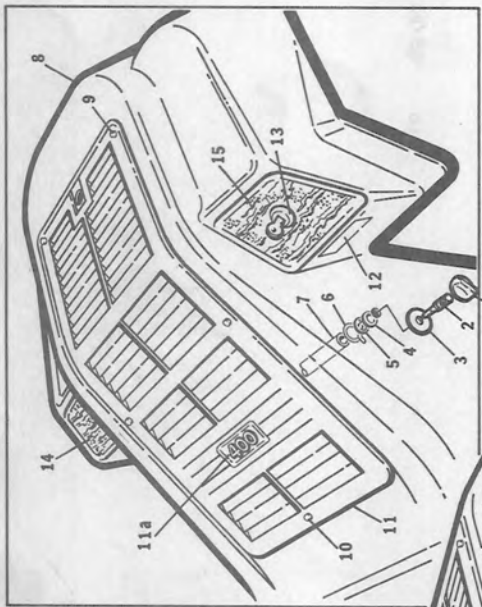


FIGURE 5-3. DASH ASSEMBLY

Figure 5-3

DASH ASSEMBLY

ITEM NO.	PART NO.	DESCRIPTION	QTY PER ASSY.	FLAT RATE TIME
	41555-1	Dash Assembly	1	0.5
	41546-1	Choke Assembly (Used with 650 Hirth engine)		
	41546-2	Choke Assembly (Used with 400 and 440 Chaparral, 340 and 440 Hirth engines on Thunderbirds)		
	41546-3	Choke Assembly (Used with 340 Hirth engine)		
	41546-4	Choke Assembly (Used with 400 and 440 Chaparral engines on Firebirds)		
1	41551	. . Knob	1	
2	41550	. . Shaft	1	
3	41549	. . Washer	1	
4	W02-06	. . Washer	1	
5	41552	. . Retaining Ring	1	
6	41547	. . Hose Clamp	2	
7	41548-1	. . Flex Shaft (Used with -1 Choke)	1	
	41548-2	. . Flex Shaft (Used with -2 Choke)	1	
	41548-3	. . Flex Shaft (Used with -3 Choke)	1	
	41548-4	. . Flex Shaft (used with -4 Choke)	1	
8	41556	. Dash	1	
9	31557	. Receptacle, 1/4 turn	4	
10	31558	. Receptacle, Latch	1	
	31445	. Nut	1	
	31559	. Nut	1	
11	31560	. Access Door Assembly	1	
	31561	. . Access Panel, Louver	1	
	31562	. . Stud Assembly	1	
	31570	. . Retaining Ring	1	
	31563	. . Fastener, 1/4 Turn	1	
	31450	. . Spring Clip	2	
	B02-07	. . Roll pin, 3/32 by 0.44 in. lg.	4	

<u>ITEM NO.</u>	<u>PART NO.</u>	<u>DESCRIPTION</u>	<u>QTY PER ASSY.</u>	<u>FLAT RATE TIME</u>
12	31573	Decal, Dash	1	
13	31565	Switch Assembly	1	0.1
14	31572-1	Decal, Inst. Panel L.H.	1	
15	31572-2	Decal, Inst. Panel R.H.	1	
16	31398	Headlight	1	
17	41583	Headlight Bracket Assy	1	0.2
	N06-04	Locknut	2	
18	M21-10	Screw	2	
19	N06-06	Nut	2	
20	M21-06	Screw	4	
	39555	Dash Assembly	1	0.3
	40555	Dash Assembly	1	0.3
20A		Blind Nut	4	
21	39556	Dash	1	0.3
22	39560	Access Door Assembly	1	0.1
23	31557	Receptacle, 1/4 turn	1	
24	M21-10	Screw	2	
25	N06-06	Nut	2	
26	M21-08	Screw	2	
26A	39113	Support Bar	2	
27	N06-06	Nut	2	
28	40641-5	Speedometer	1	
29	40572	Decal	1	
30	40413-3	Nameplate	1	
	41393	Nut	1	
31	31573	Decal (Skylark only)	1	
		Located on Engine		
32	39551	Choke (Firebird SS and Skylark)	1	

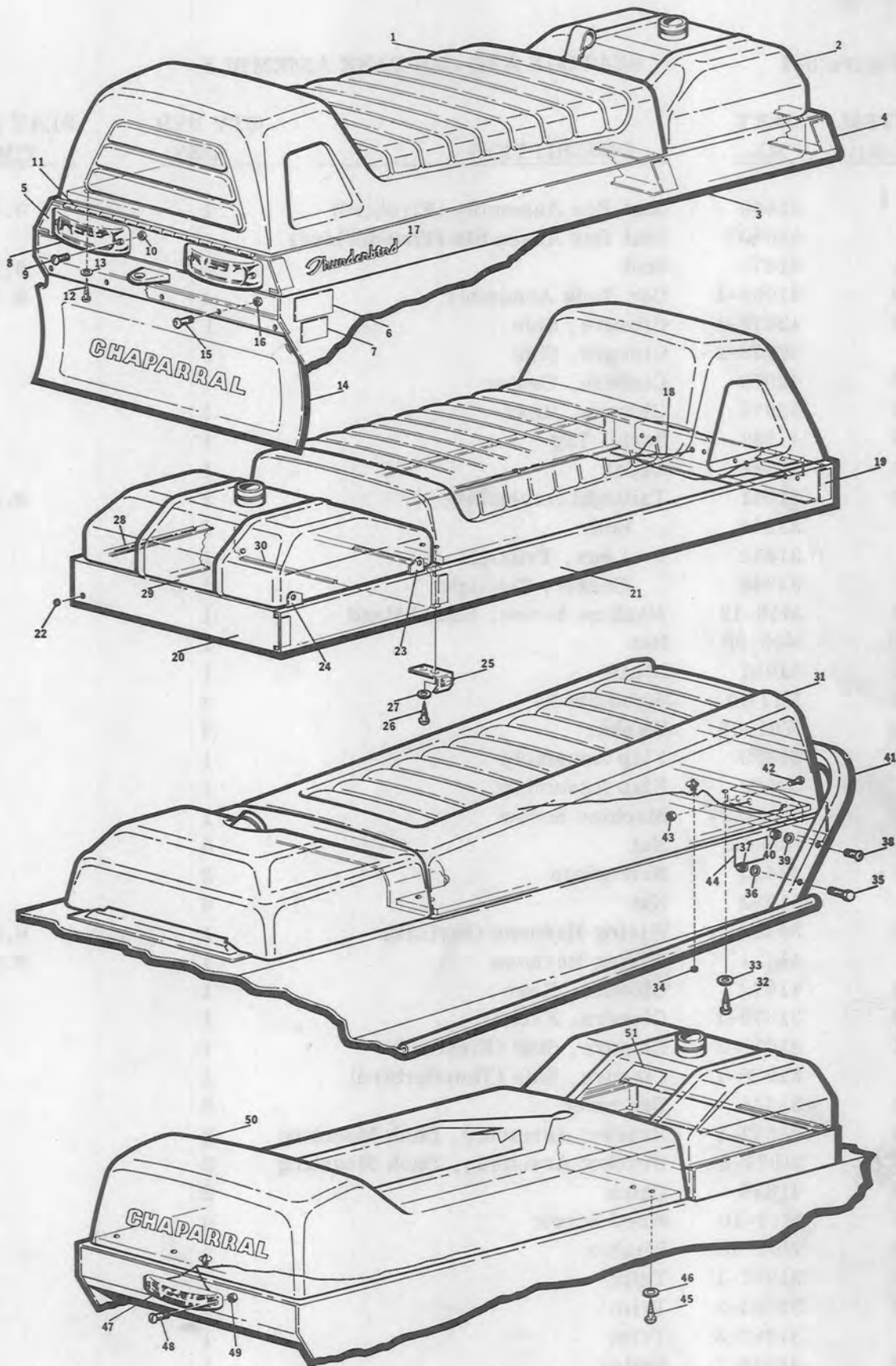


FIGURE 5-4. SEAT BOX

Figure 5-4

SEATBOX AND GAS TANK ASSEMBLY

ITEM NO.	PART NO.	DESCRIPTION	QTY PER ASSY	FLAT RATE TIME
	41040	Seat Box Assembly (Firebird)	1	0.5
	42040	Seat Box Assembly (Thunderbird)	1	
1	41075	Seat	1	0.2
2	41058-1	Gas Tank Assembly	1	0.5
3	42078-1	Closure, Side	1	
	42078-2	Closure, Side	1	
4	42079	Closure, Center	1	
5	42079	Closure, Rear	1	
6	41582	Serial Tag	1	
7	41568	Decal	1	
8	41041	Taillight Assembly	2	0.2
	31044	. Bulb	2	
	31042	. Lens, Taillight	1	
	31045	. Gasket, Taillight	1	
9	M18-12	Machine Screw, Round Head	1	
10	N06-05	Nut	1	
11	41081	Hinge	1	
12	M17-10	Wood Screw	4	
13	W01-05	Washer	4	
14	31620	Flap Assembly	1	
	32620	Flap Assembly	1	
15	M20-12	Machine Screw	1	
16	N06-06	Nut	5	
17	42413	Nameplate	2	
	41393	Nut	6	
18	39421	Wiring Harness (Skylark)	1	0.5
	41421	Wiring Harness	1	0.5
19	41079	Closure, Rear	1	
20	31079-1	Closure, Front	1	
21	31078-2	Closure, Side (Firebird)	1	
	31078-1	Closure, Side (Thunderbird)	1	
22	31048	Grommet	2	
23	31072-1	Bracket Assembly, Dash Mounting	2	
24	31072-2	Bracket Assembly, Dash Mounting	2	
25	41029	Catch	2	
26	M17-10	Wood Screw	4	
27	W01-05	Washer	4	
28	31082-1	Trim	2	
29	31082-2	Trim	1	
	31082-3	Trim	1	
30	31049-1	Sealer	1	
	31049-2	Sealer	1	

<u>ITEM NO.</u>	<u>PART NO.</u>	<u>DESCRIPTION</u>	<u>QTY PER ASSY</u>	<u>FLAT RATE TIME</u>
31	40075	Seat	1	
32	M17-10	Screw	8	
33	W01-05	Washer	8	
34	31564	Grommet	1	
35	B05-26	Bolt	1	
36	W01-07	Washer	1	
37	N06-07	Nut	1	
38	M20-20	Screw	2	
39	W01-06	Washer	2	
40	N06-06	Nut	2	
41	40121	Bumper, Rear	1	
42	M18-12	Screw	4	
43	N06-05	Nut	4	
44	41568	Decal, CC	1	
45	M17-10	Screw	8	
46	W01-05	Washer	8	
47	39041	Taillight	1	
	31044	. Bulb	1	
48	M18-12	Screw	2	
49	N06-05	Nut	2	
50	39075	Seat, Skylark	1	
51	31567	Decal, CC	1	
52	30057	Gas Tank Enclosure Assembly	1	
	30076-1	. Side Tank Holdown	1	
	30076-2	. Side Tank Holdown	1	
	30077-1	. Closure, Tank Holdown	1	
	30077-3	. Closure, Tank Holdown	1	

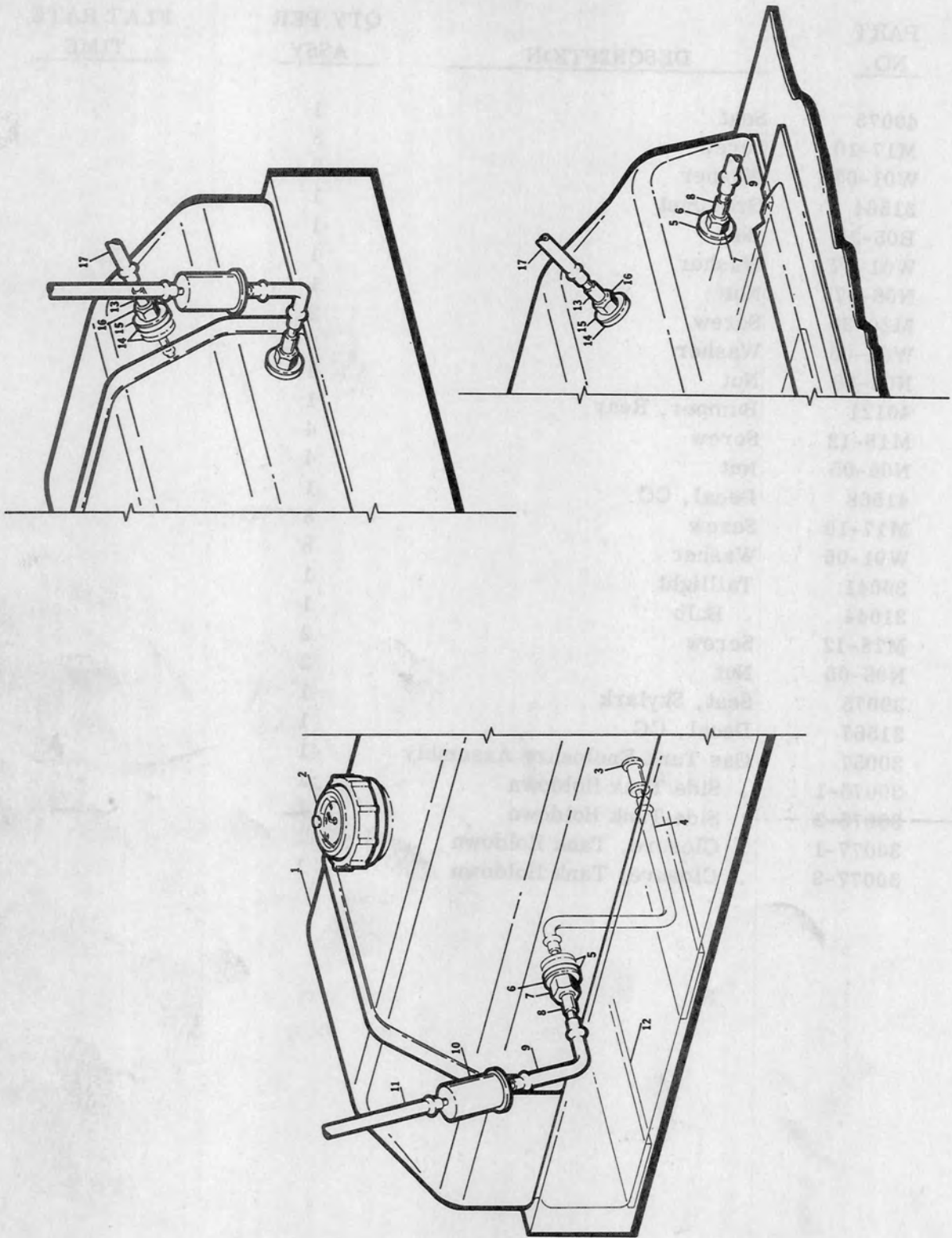


FIGURE 5-5. GAS TANK ASSEMBLY

Figure 5-5

GAS TANK ASSEMBLY

<u>ITEM NO.</u>	<u>PART NO.</u>	<u>DESCRIPTION</u>	<u>QTY PER ASSY.</u>	<u>FLAT RATE TIME</u>
1	31058	Gas Tank (Skylark)	1	
	31059	Gas Tank (Firebird and Thunderbird)	1	
	40059	Gas Tank (Firebird SS)	1	
2	31060-1	Cap and Gage (Skylark)	1	
	31060-2	Cap and Gage (Firebird SS)	1	
	31060-3	Cap and Gage (Firebird and Thunderbird)	1	
3	31064	Weight, Gas line	1	
4	31061-1	Line, Gas	1	
5	31070	Washer, neoprene	2	
6	W02-10	Washer	1	
7	N05-10	Nut, Lock, 1/2-20 UNC, Aluminum	1	
8	31067	Tank Fitting	1	
9	31061-2	Line, Gas	1	
10	31063	Fuel Filter Assy	1	
11	31061-3	Line, Gas	1	
12	31068	Cushion, Gas tank	1	
13	31067	Tank, Fitting	2	
14	31070	Washer, Neoprene	4	
15	W02-10	Washer	2	
16	N05-10	Nut, Lock	2	
17	31061-4	Line, Gas	1	

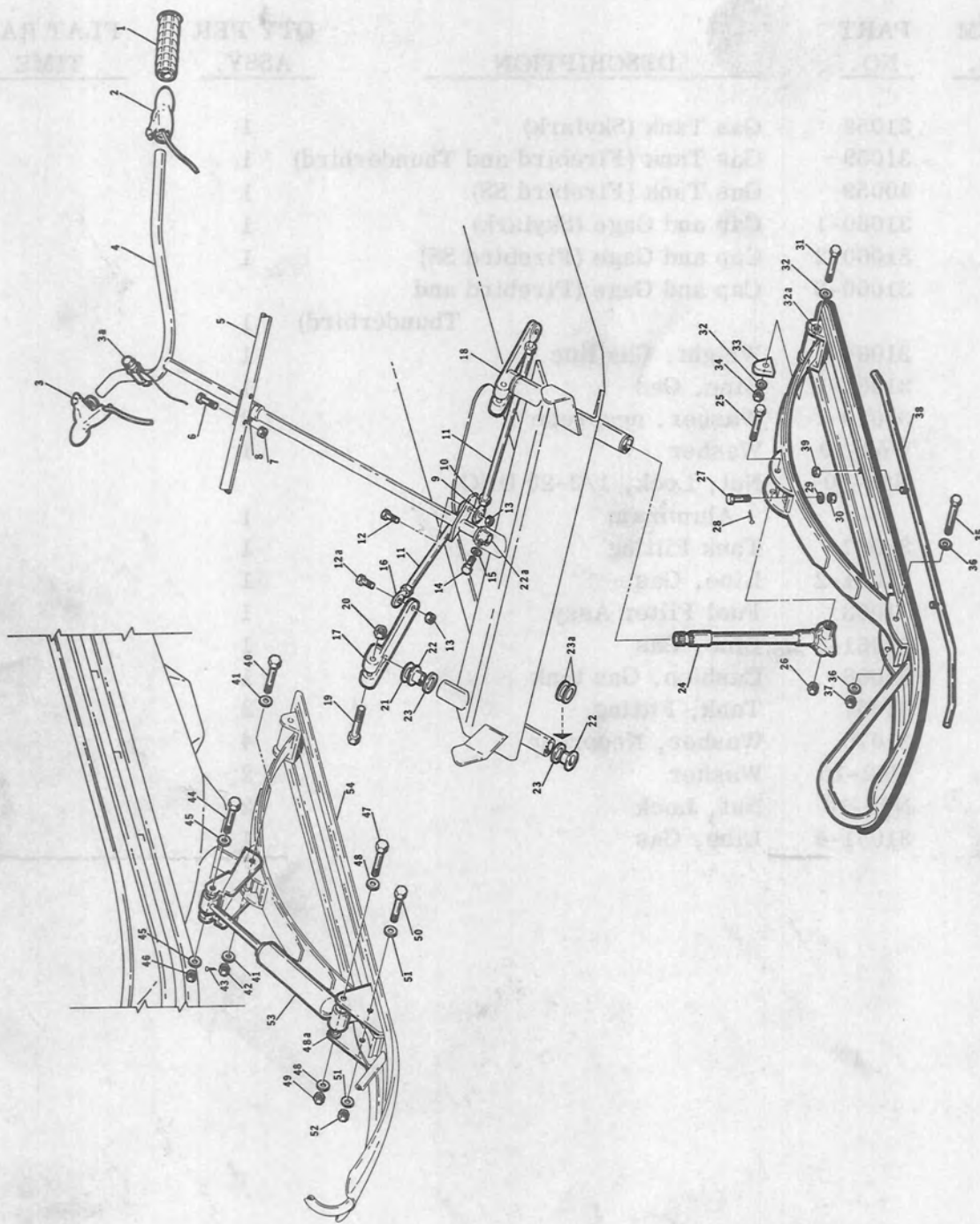


FIGURE 5-6. CONTROLS, TILLER BAR, AND SKIS

Figure 5-6

CONTROLS, TILLER BAR AND SKI ASSEMBLY

ITEM NO.	PART NO.	DESCRIPTION	QTY PER ASSY.	FLAT RATE TIME
1	41343	Handle Grip	2	
2	31364	Brake Control Assembly (Skylark only)	1	0.3
	42364	Brake Control Assembly	1	0.3
	31365	. Lever (Used on 31364)	1	
	41365	. Lever	1	
	31366	. Cable and Housing (Used on 31364)	1	
	41366	. Cable and Housing	1	
	31367	. Clevis (Used on 31364)	1	
	42367	. Clevis and Switch	1	
	31368	. Spring, Return	1	
	31369	. Spring, Strain	1	
3	39358	Throttle Control Assembly (Skylark only)	1	0.3
	41358-1	Throttle Control Assembly (All Hirth Engines)	1	0.3
	41358-2	Throttle Control Assembly (CCW, Chaparral, Sachs)	1	0.3
	31359	. Lever (Used with 39358)	1	
	41359	. Lever, Thumb	1	
	39360	. Cable (Used with 39358)	1	
	41360-1	. Cable (Used with 41358-1)	1	
	41360-2	. Cable (Used with 41358-2)	1	
3A	41465	Kill Switch	1	0.5
4	31342	TillerBar Weldment Tiller Support	1	
5		Part shown for reference	1	
6	B05-24	Bolt	2	
7	N06-07	Nut	2	
8	31352	Fitting, Zerk	1	
	41384	Tie Rod Assembly	2	0.1
9	41386	. Rod End, R.H.	1	0.1
10	N04-08	. Jam Nut, L.H.	1	
	N05-08	. Jam Nut, R.H.	1	
11	41385	. Tie Rod	1	
12	B01-28	. Bolt, Tie Rod	1	
12A	B01-20	. Bolt	2	
13	N06-08	. Nut	3	
14	B01-16	. Bolt	1	
15	W04-08	. Washer	1	

ITEM NO.	PART NO.	DESCRIPTION	QTY PER ASSY.	FLAT RATE TIME
16	41387	. Rod End, L.H.	1	0.1
17	31379	Steering Arm, R.H.	1	0.2
18	31379	Steering Arm, L.H.	1	0.2
19	B01-28	Bolt	2	
20	N06-08	Nut	2	
21	31378	Wave Washer	2	
22	31014	Bushing, Spindle	4	0.2
22A	31015	Bushing, Tiller	1	0.3
23	31017	Spacer	4	
23A	31744	Spacer	4	0.2
24	41377	Spindle	2	0.2
	41590-1	Ski Assembly, L.H.	2	0.1
	41590-2	Ski Assembly, R. H.		
25	31613-3	. Bolt, Ski Hanger	2	
26	N08-08	. Nut	2	
	W01-08	. Washer	4	
	P26-12	. Cotter pin	2	
27	31613-1	. Bolt	2	
28	P26-12	. Cotter pin	2	
29	W02-08	. Washer	2	
30	N08-08	. Nut	2	
31	B01-60	. Bolt	1	
32	W01-08	. Washer	2	
32A		. Washer	2	
33	31612	. Bumper, Ski	2	0.1
34	N06-08	. Nut	1	
35	B01-48	. Bolt	1	
36	W01-08	. Washer	1	
37	N06-08	. Nut	1	
38	41607	. Skag Weldment	1	
39	N06-07	. Nut	2	
40	31613-2	. Bolt	1	
41	W01-08	. Washer	2	
42	N08-08	. Nut Castle	1	
43	P26-12	. Cotter Pin	1	
44	B08-48	. Bolt	1	
45	W01-09	. Washer	2	
46	N06-09	. Nut	1	
47	B08-52	. Bolt	1	
48	W01-09	. Washer	2	
48A	31351	. Spacer	2	
49	N06-09	. Nut	1	
50	B01-52	. Bolt	1	

<u>ITEM NO.</u>	<u>PART NO.</u>	<u>DESCRIPTION</u>	<u>QTY PER ASSY.</u>	<u>FLAT RATE TIME</u>
51	W01-08	. Washer	2	
52	N06-08	. Nut	1	
52	40664	. Shock	1	
54	40591	. Ski Weldment	1	0.2
	31601	. Spring, Top	1	
	31600	. Spring, Center	1	
	31599	. Spring, Main	1	
	31598-2	. Hanger, Ski	1	
	31607	. Skag Weldment	1	
	31606	. Wear Plate		

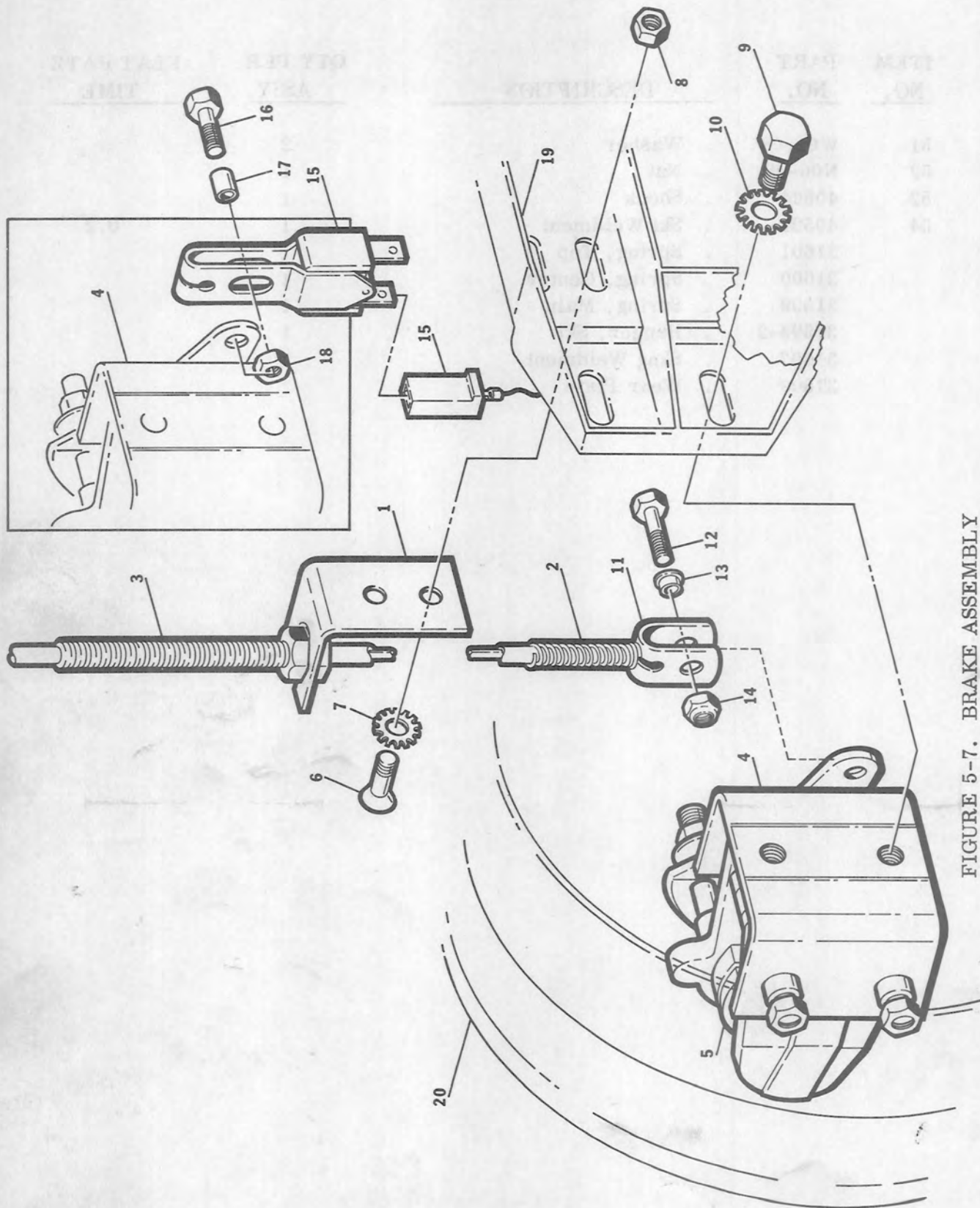


FIGURE 5-7. BRAKE ASSEMBLY

Figure 5-7

BRAKE ASSEMBLY

<u>ITEM NO.</u>	<u>PART NO.</u>	<u>DESCRIPTION</u>	<u>QTY. PER ASSY.</u>	<u>FLAT RATE TIME</u>
1	41168	Bracket, Brake	1	
2	31368	Spring, Return	1	
3	31369	Spring, Strain	1	
4	31169	Caliper Assembly	1	
5	31170-1	. Brake Pad	1	
	31170-3	. Brake Pad	1	
6	B03-08	Bolt	2	
7	W03-07	Washer	2	
8	N02-06	Nut	2	
9	B05-08	Bolt	2	
10	W03-07	Washer, Star	2	
11	31367	Clevis	1	
12		Bolt (furnished with 31367)	1	
13		Spacer (furnished with 31367)	1	
14		Nut (furnished with 31367)	1	
15	42367	Clevis and switch	1	
16		Bolt (furnished with 42367)	1	
17		Spacer (furnished with 42367)	1	
18		Nut (furnished with 42367)	1	
19	41128	Chain Case (see figure 5-8)	1	
20	31175	Clutch (see figure 5-8)	1	

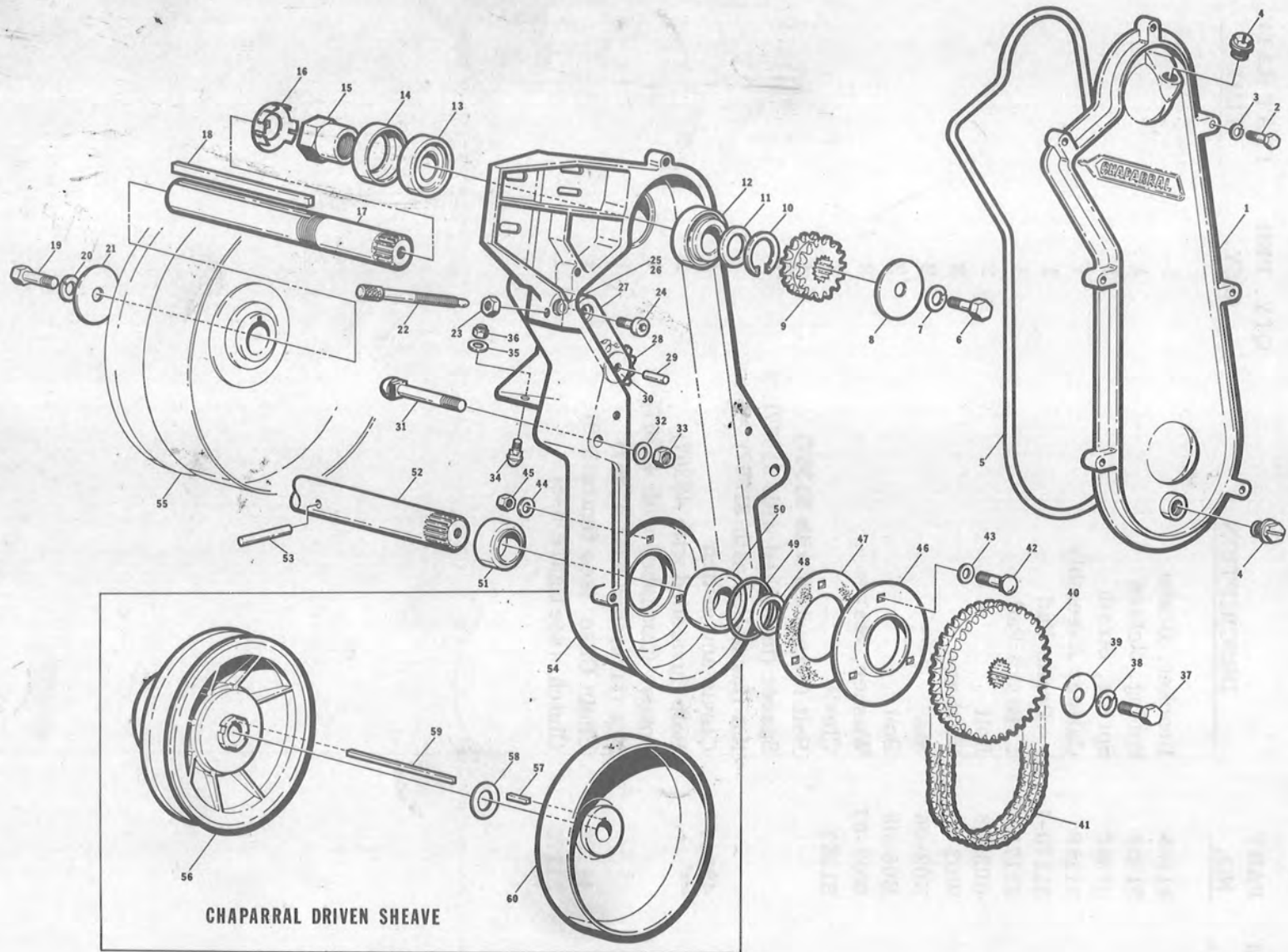


FIGURE 5-8. CHAIN CASE

Figure 5-8

CHAIN CASE ASSEMBLY

ITEM NO.	PART NO.	DESCRIPTION	QTY. PER ASSY.	FLAT RATE TIME
	41128-1	Chain Case Assembly	1	1.0
	41128-3	Chain Case Assembly	1	1.0
1	41133	. Cover, Chain Case	1	0.2
2	B02-16	. Bolt	7	
3	W04-06	. Washer, Lock	7	
4	31162	. Oil Plug, 1/2-13 UNC	2	
5	41147	. "O" Ring, Cover	1	
6	B01-16	. Bolt	1	
7	W04-06	. Washer, Lock	1	
8	31259-2	. Washer	1	
9	31655-1	. Sprocket, Drive, 15 Tooth	1	0.3
	31655-2	. Sprocket, Drive, 17 Tooth	1	0.3
	31655-3	. Sprocket, Drive, 19 Tooth	1	0.3
10	31150-1	. Snap Ring	1	
11	41141	. Spacer, Input Shaft	1	
12	31138	. Cup, Bearing	2	0.5
13	31139	. Cone, Bearing	2	0.5
14	31144	. Seal Input Shaft	1	
15	41134	. Retainer, Input Shaft	1	
16	41155	. Washer, Retaining	1	
17	41131	. Shaft, Input	1	0.5
18	42177	. Key (1/4 x 3/16 x 4.25 in.)	1	
19	B01-16	. Bolt	1	
20	W04-08	. Washer, Lock	1	
21	31259-1	. Washer	1	
22	41130	. Stud, Adjusting	1	
23	N02-08	. Nut	1	
24	M14-10	. Screw	1	
25	W02-06	. Washer	1	
26	W06-06	. Washer	1	
	41163	. Idler Assembly	1	0.4
27	41153	. .Arm, Idler	1	
28	41173	. .Bearing and Sprocket Assembly	1	
29	41178	. .Shaft, Idler	1	
30	41179	. .Washer	1	
31	B18-32	. Bolt	2	
32	W01-08	. Washer	2	
33	N06-08	. Nut, Lock	2	
34	B17-12	. Bolt	2	
35	W01-06	. Washer	2	
36	N06-06	. Nut, Lock	2	

ITEM NO.	PART NO.	DESCRIPTION	QTY. PER ASSY.	FLAT RATE TIME
37	B01-16	. Bolt	1	
38	W04-08	. Lock Washer	1	
39	31259-1	. Washer	1	
40	31136	. Sprocket	1	
41	411137-1	. Chain, 15 Tooth	1	
	411137-2	. Chain, 17 Tooth	1	
	411137-3	. Chain, 19 Tooth	1	
42	B17-18	. Bolt	3	
43	41151	. Washer, Gasket	3	
44	W01-06	. Washer	3	
45	N06-06	. Nut, Lock	3	
46	31143	. Flangette	1	
47	41148	. Gasket, Flangette	1	
48	41141	. Spacer, Input Shaft	1	
49	31149	. "O" Ring, Flangette	1	
50	31140	. Bearing, 1.00 inch	1	
51	31146	. Collar	1	
52	41132	. Shaft	1	
	42132	. Shaft	1	
53	P07-32	. Pin	1	
54	41129	. Chain Case	1	
55	31175-1	Clutch (All other engines)	1	
56	31175-2	Clutch (Used with 650 Hirth)	1	
	10301-1	Clutch (Skylark & Firebird with 292 Hirth)	1	
57	41164	Key (1/4 x 3/16 x 0.50 in.)	1	
58	31180	Washer	1	
59	41177	Key (1/4 x 1/4 x 3.62 in.)	1	
60	41165	Brake Flange Assembly (-3 Assembly only)	1	

Figure 5-9

TRACK ASSEMBLY

ITEM NO.	PART. NO.	DESCRIPTION	QTY PER ASSY.	FLAT RATE TIME
	39185	Track Assembly (Skylark)	1	1.0
	40185	Track Assembly (Firebird SS)		
	41185	Track Assembly (Firebird)		
	42185	Track Assembly (Thunderbird)	1	1.0
	31235	.Rear Idler Assembly (Skylark and Firebird)	1	
	32235	.Rear Idler Assembly (Thunderbird)	1	.8
1	31236	. .Axle (Thunderbird)	1	.8
2	41237	. .Idler Wheel	3	.8
3	31140	. .Bearing	2	.5
4	31146	. .Lock Collar	2	
5	P07-32	. .Roll Pin, 5/16 in. dia. by 1-5/8 in. long	3	
6	32238	. .Spacer (Thunderbird)	2	
	31245	. .Track Hanger Assembly (Skylark)	1	.8
	32245	. .Track Hanger Assembly (Thunderbird)	1	.8
	41245	. .Track Hanger (Firebirds)		
7	31251-1	. .Track Tightener Weldment, R. H.	1	.8
8	31246	. .Track Hanger Weldment (Skylark and Firebird)	2	.8
	32246	. .Track Hanger Weldment (Thunderbird)	2	.8
9	31251-2	. .Track Tightener Weldment, L.H.	1	.8
10	31256-2	. .Spring, Rear, R.H.	1	.5
11	31256-1	. .Spring, Rear, L. H.	1	.5
12	31259-1	. .Washer, Flat	2	
13	31259-1	. .Spacer Pivot	2	
14	31255	. .Tie Tube, Rear (Skylark and Firebird)	1	.8
	32255	. .Tie Tube, Rear (Thunderbird)	1	.8
15	B01-48	. .Bolt, 3/8-16 UNC by 3 in. long, 1.25 min. thd.	2	
16	W04-08	. .Lockwasher, 3/8 in.	2	

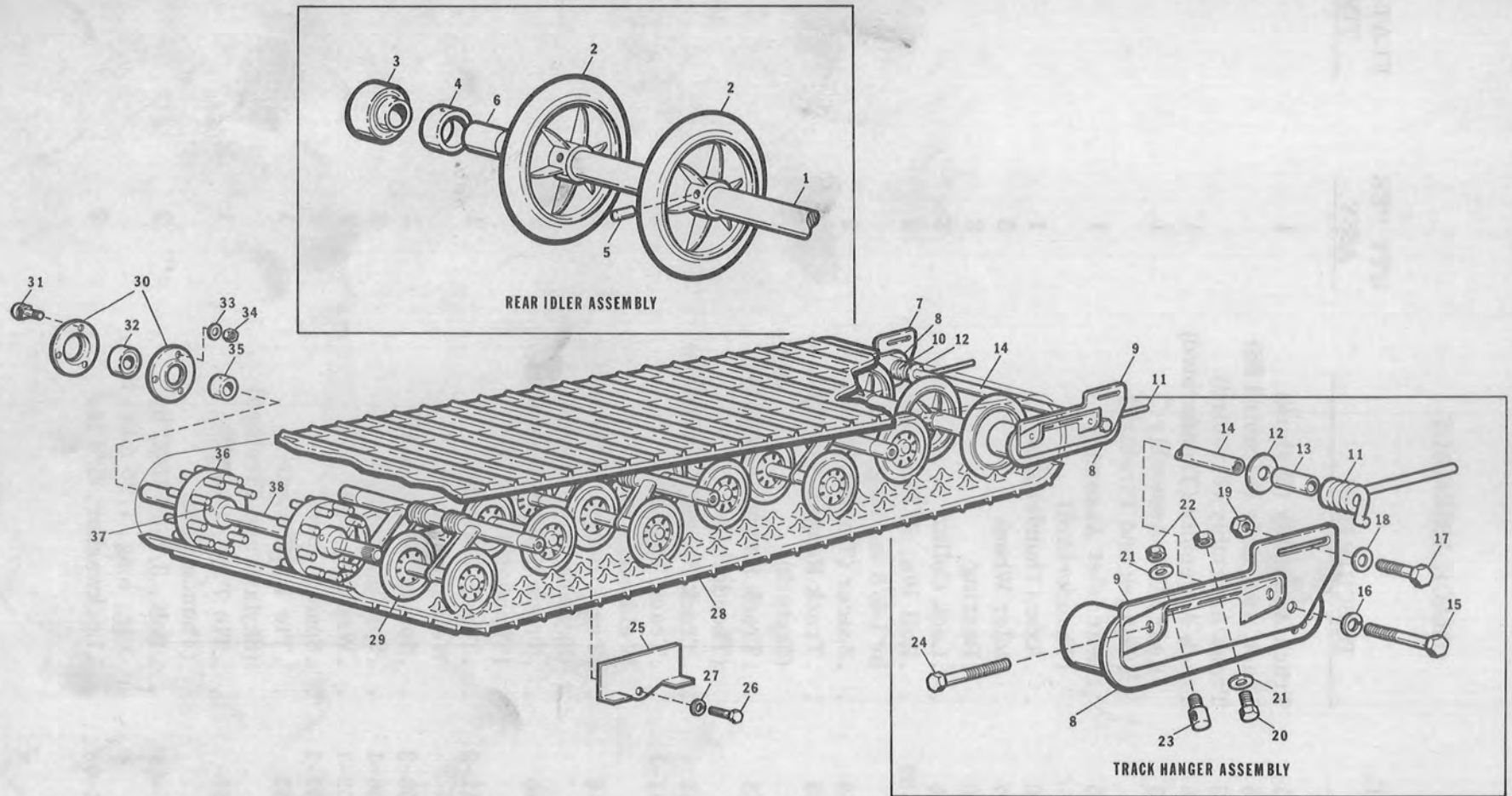


FIGURE 5-9. TRACK ASSEMBLY

<u>ITEM NO.</u>	<u>PART NO.</u>	<u>DESCRIPTION</u>	<u>QTY PER ASSY.</u>	<u>FLAT RATE TIME</u>
17		Part shown for reference		
18		Part shown for reference		
19		Part shown for reference		
20	B05-12	. Bolt	2	
21	W01-07	. Washer	2	
22	N06-07	. Locknut	2	
23	31260	. Adjusting Bolt, stud	2	
24	31261	. Bolt, Adjusting	2	
25		Part shown for reference		
26	B01-16	. Bolt, Adjusting	2	
27	W04-08	. Washer, Lock	6	
28	39186	. Track (Skylark)	1	
	40186	. Track (Firebird SS)	1	
	41186	. Track (Firebird)	1	
	32186	. Track (Thunderbird)	1	
29	31205	. Bogie Assembly (Skylark and Firebird) See page following	3	
	32205	. Bogie Assembly (Thunderbird) See page following	3	
30	31143	. Flangette	1	
31	B05-12	. Bolt	3	
32	31140	. Bearing, Fafnir RA100NPPB	1	
33	W01-07	. Washer	3	
34	N06-07	. Locknut	3	
35	31146	. Lock Collar	1	
36	31188	. Sprocket, Drive (Skylark and Firebird)	2	1.0
	32188	. Sprocket, Drive (Thunderbird)	2	1.0
	40188	. Sprocket (Firebird SS)		
37	P07-32	. Roll Pin, 5/16 in. dia. by 2.0 in. long	2	
38	40132	. Axle, Front (Skylark and Firebird)	1	1.0
	41132	. Axle, Front (Firebird SS)	1	1.0
	42132	. Axle, Front (Thunderbird)	1	1.0

See page 5-23 dated 10-1-70 for parts identification

BOGIE ASSEMBLY

ITEM NO.	PART NO.	DESCRIPTION	QTY. PER ASSY.	FLAT RATE TIME
	31205	Bogie Assembly, (Skylark, Firebird, and Firebird SS)	REF	.5
	32205	Bogie Assembly, (Thunderbird)	REF	.5
1	31209-2	.Spring, Bogie, R.H.	1	
2	31209-2	.Spring, Bogie, L.H.	1	
3		Part shown for reference		
4		Part shown for reference		
5	32214	.Spacer, Main Axle (Thunderbird)	2	
6	31223	.Bogie Bracket, Weldment	2	.2
7	31206	.Axle, Main (Skylark and all Firebirds)	1	.5
	32206	.Axle, Main (Thunderbird)	1	.5
8	31217	.Center Bogie Bracket Weldment	1	
9	B12-16	.Bolt, Self locking 1/4-20 by 1 in. lg.	4	
10	W02-06	.Washer, Flat	4	
11	31225	.Wheel, Bogie	5	.1
12	31207	.Axle, Short (Skylark and all Firebirds)	1	.5
	32207	.Axle, Short (Thunderbird)	1	.5
13	31208	.Axle, Long (Skylark and all Firebirds)	1	.5
	32208	.Axle, Long (Thunderbird)	1	.5
14	32215	.Spacer, Bogie Axles (Thunderbird)	4	

<u>ITEM NO.</u>	<u>PART NO.</u>	<u>DESCRIPTION</u>	<u>QTY PER ASSY.</u>	<u>FLAT RATE TIME</u>
17		Part shown for reference		
18		Part shown for reference		
19		Part shown for reference		
20	B05-12	. .Bolt	2	
21	W01-07	. .Washer	2	
22	N06-07	. .Locknut	2	
23	31260	. .Adjusting Bolt, stud	2	
24	31261	. .Bolt, Adjusting	2	
25		Part shown for reference		
26	B01-16	. .Bolt, Adjusting	2	
27	W04-08	. .Washer, Lock	6	
28	39186	. Track (Skylark)	1	
	40186	. Track (Firebird SS)	1	
	41186	. Track (Firebird)	1	
	32186	. Track (Thunderbird)	1	
29	31205	. Bogie Assembly (Skylark and Firebird) See page following	3	
	32205	. Bogie Assembly (Thunderbird) See page following	3	
30	31143	. Flangette	1	
31	B05-12	. Bolt	3	
32	31140	. Bearing, Fafnir RA100NPPB	1	
33	W01-07	. Washer	3	
34	N06-07	. Locknut	3	
35	31146	. Lock Collar	1	
36	31188	. Sprocket, Drive (Skylark and Firebird)	2	1.0
	32188	. Sprocket, Drive (Thunderbird)	2	1.0
	40188	. Sprocket (Firebird SS)		
37	P07-32	. Roll Pin, 5/16 in. dia. by 2.0 in. long	2	
38	40132	. Axle, Front (Skylark and Firebird)	1	1.0
	41132	. Axle, Front (Firebird SS)	1	1.0
	42132	. Axle, Front (Thunderbird)	1	1.0

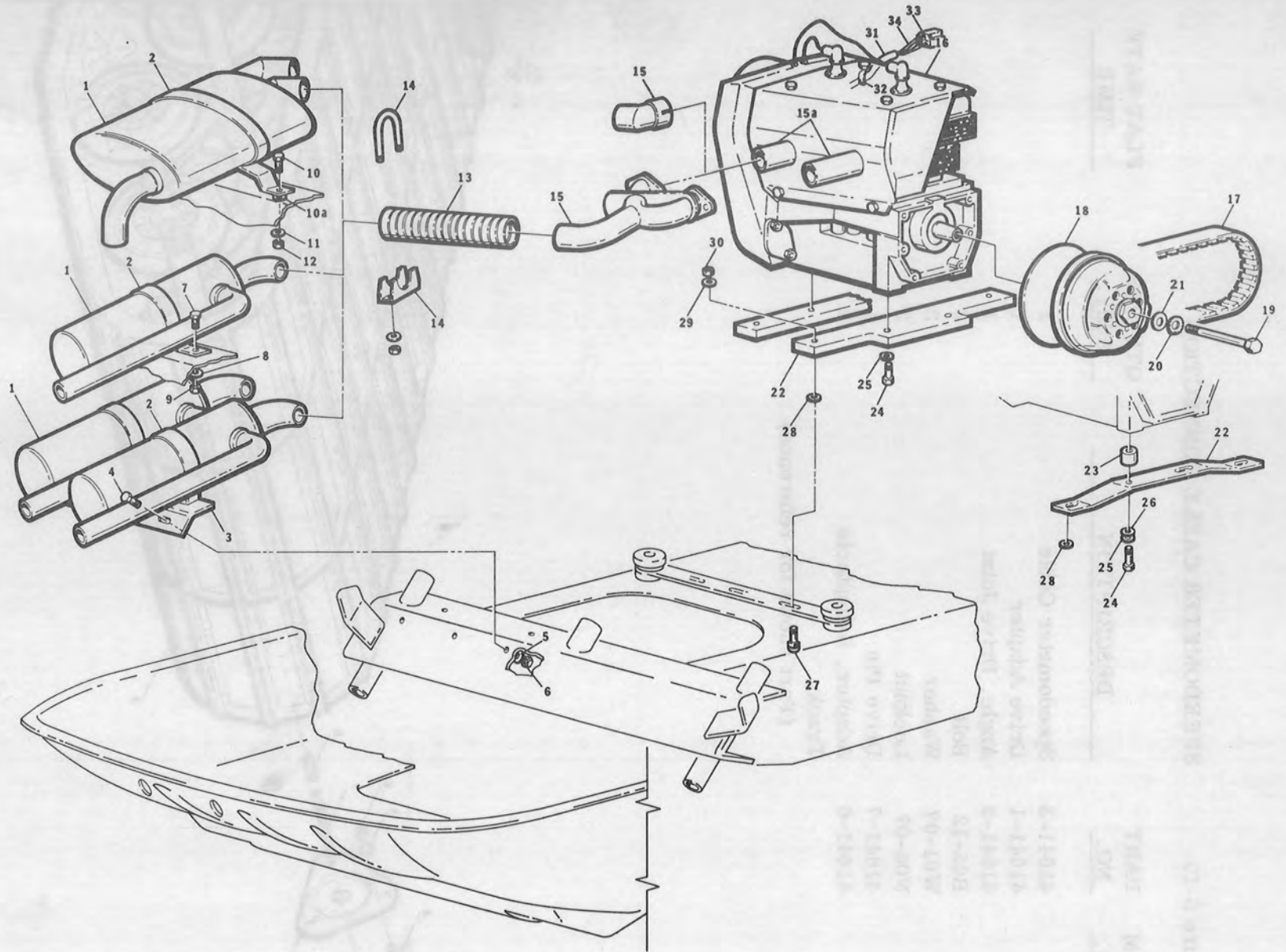


FIGURE 5-11. MUFFLER AND ENGINE MOUNTINGS - HIRTH

Figure 5-11

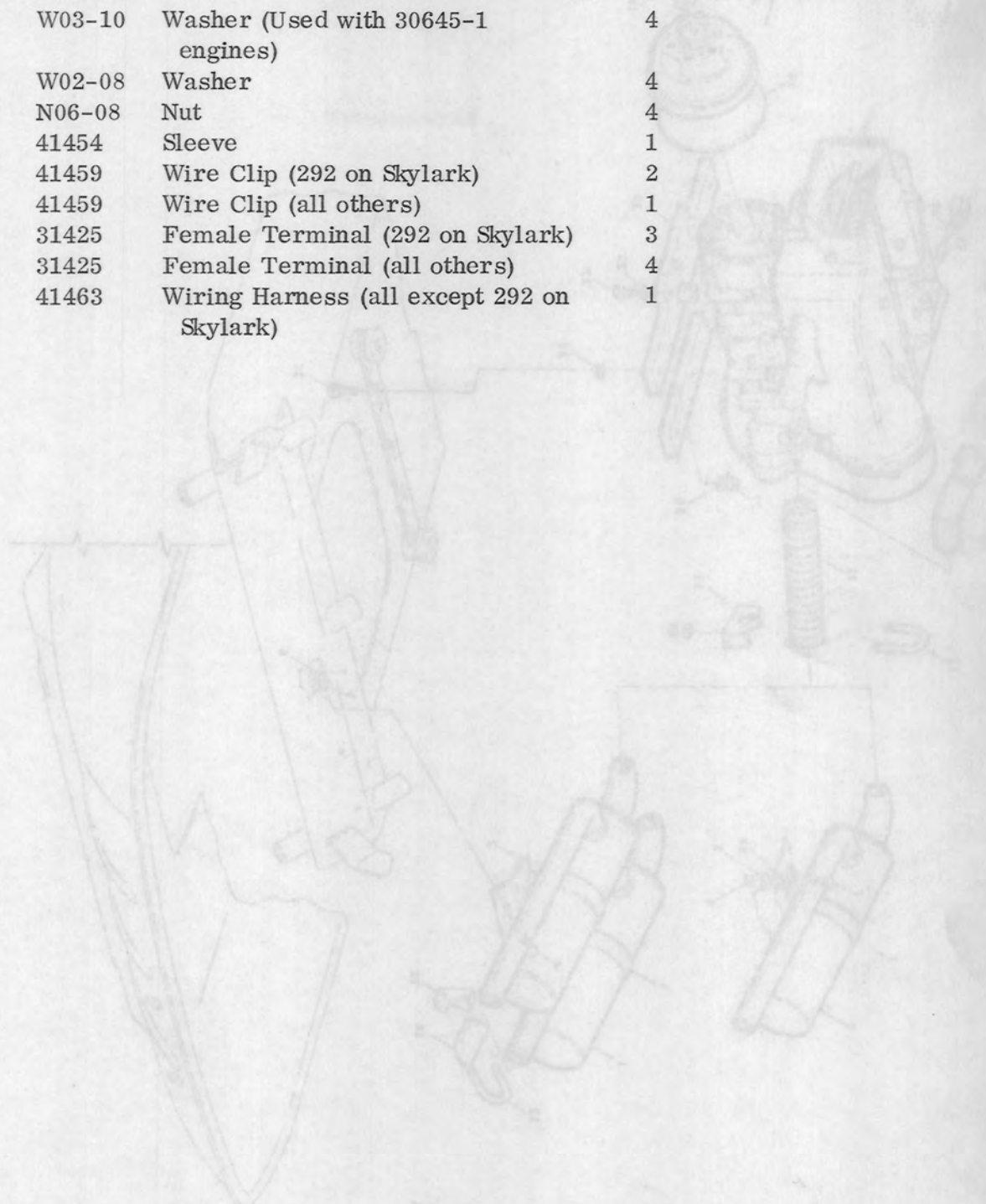
MUFFLER AND ENGINE MOUNTINGS
HIRTH

ITEM NO.	PART NO.	DESCRIPTION	QTY PER ASSY	FLAT RATE TIME
1	41313-1	Muffler Weldment (650 on Fire- bird SS and Thunderbird)	2	0.3
	41313-2	Muffler Weldment (292, 400 and 440 on Skylark and Firebird SS)	1	0.3
	41313-3	Muffler Weldment (340 on Firebird)	1	0.3
	41313-4	Muffler Weldment (400 and 440 on Firebird SS)	1	0.3
	41313-5	Muffler Weldment (292 and 340 on Firebird SS)	2	0.3
	41354	Muffler Weldment (440 on Firebird)	1	0.3
2	41327	Band Assy. (650, 292, 340, 400, 440 on Firebird SS and Thunder- bird)	2	
	31327	Bracket (440 on Firebird)	1	
	41350-1	Bracket (292, 340 on Skylark, Fire- bird and Thunderbird)	1	
	31356	Clamp Assembly (440 on Firebird)	1	
3	40318	Bracket (650, 400 and 440 on Firebird SS and Thunderbird)	1	
	40320	Bracket (292, 340 on Firebird SS)	1	
4	B03-14	Bolt	3	
5	W02-06	Washer	3	
6	N10-06	Nut	3	
7	B03-12	Bolt	2	
8	W02-06	Washer	2	
9	N10-06	Nut	2	
10	B03-20	Bolt	2	
10a	41376	Spacer (440 on Firebird)	2	
11	W02-06	Washer	2	
12	N10-06	Nut	2	
13	41319-1	Flex tubing (292 on Skylark)	1	0.2
	41319-1	Flex tubing (400 and 440 on Firebirds)	2	0.2
	41319-2	Flex tubing (440 on Firebird)	2	0.2
	41319-3	Flex tubing (292 and 340 on Firebirds)	2	0.2
	41320-2	Flex Tubing (340 and 650) on Firebird, Firebird SS, and Thunderbird	1	
14	31321	Clamp, Tubing	As Req.	
	31322	Clamp, Tubing	As Req.	
	41287-2	Exhaust (292 on Skylark)	1	
15	40287-3	Exhaust Manifold (650) on Hirth, Firebird SS and Thunderbird)	2	

ITEM NO.	PART NO.	DESCRIPTION	QTY PER ASSY	FLAT RATE TIME
	40287-7	Exhaust Manifold (440, 400, 240) on Firebird and Firebird SS	2	
	41287-5	Exhaust Manifold (340) on Firebird SS and Thunderbird	1	
16	30645-1	Engine, 292 Hirth	1	0.8
	41645-1	Engine, 292 Hirth	1	0.8
	41645-2	Engine, 340 Hirth	1	0.8
	41645-3	Engine, 400 Hirth	1	0.8
	41645-4	Engine, 440 Hirth	1	0.8
	41645-5	Engine, 650 Hirth	1	0.8
17	31650-2	Drive Belt (Used with 41645-2, 3, 4, and 5 engines)	1	
	41650	Drive Belt (Used with 30645-1, 41645-1 engines)	1	
18	41295-7	Drive Clutch, 770 (Used with 30645-1 engines)	1	
	41295-2	Drive Clutch, 770 (Used with 41645-1 engines)	1	
	41295-3	Drive Clutch, 910 (Used with 41645-3 engines)	1	
	41295-4	Drive Clutch, 910 (Used with 41645-3 engines)	1	
	41295-5	Drive Clutch, 910 (Used with 41645-4 engines)	1	
	41295-6	Drive Clutch, 910 (Used with 41645-5 engines)	1	
19	B07-72	Bolt (Used with 30645-1, 41645-1 engines)	1	
	B07-84	Bolt (Used with 41645-2 through -5 engines)	1	
20	W02-10	Washer	1	
21	W03-10	Washer	1	
22	31266	Bar, Motor Mount (Used with 30645-1 engine)	2	
	41266-2	Bar, Motor Mount (Used with 41645-1 through -5 engines)	1	
	40266-2	Bar, Motor Mount	1	
23	31267-2	Spacer, Motor Mount (Used with 30645-1 engine)	4	
24	B06-28	Bolt	4	
25	W03-10	Lockwasher, Star	4	
26	W02-09	Washer (Used with 30645-1 engine)	4	
27	B18-20	Bolt (Used with 30645-1 engine)	4	

<u>ITEM NO.</u>	<u>PART NO.</u>	<u>DESCRIPTION</u>	<u>QTY PER ASSY</u>	<u>FLAT RATE TIME</u>
28	W03-10	Washer (Used with 30645-1 engines)	4	
29	W02-08	Washer	4	
30	N06-08	Nut	4	
31	41454	Sleeve	1	
32	41459	Wire Clip (292 on Skylark)	2	
	41459	Wire Clip (all others)	1	
33	31425	Female Terminal (292 on Skylark)	3	
	31425	Female Terminal (all others)	4	
34	41463	Wiring Harness (all except 292 on Skylark)	1	

FIGURE P-33' WHEELS AND ENGINE MODIFICATIONS - CHRYSLER



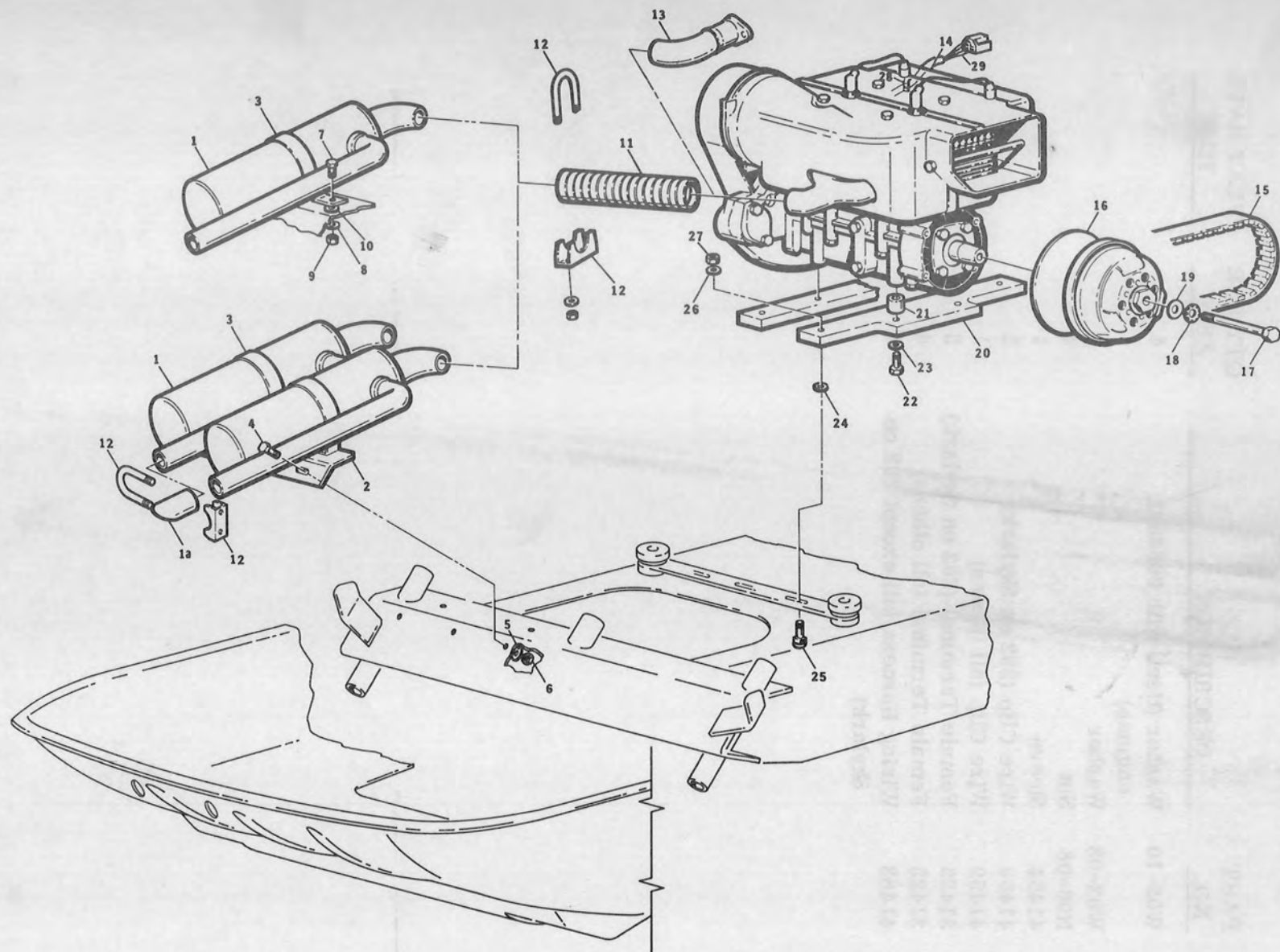


FIGURE 5-12. MUFFLER AND ENGINE MOUNTINGS - CHAPARRAL

Figure 5-12

MUFFLER AND ENGINE MOUNTINGS
CHAPARRAL

ITEM NO.	PART NO.	DESCRIPTION	QTY PER ASSY.	FLAT RATE TIME
1	41313-1	Muffler Weldment (400 and 440 Chaparrals on Firebird SS)	2	
	41313-2	Muffler Weldment (398 and 440 Chaparrals on Firebird and Thunderbird)	1	
1A	31292-9	Stub Exhaust	1	
2	41327	Bracket (Firebird SS-400 Engine)	2	
	41350-1	Bracket (Firebird - Both engines)	1	
	41350-3	Bracket (Thunderbird - Both engines)	1	
	40318	Bracket (Both Engines - Firebird SS)	1	
3	41327	Band Assembly	2	
4	B03-14	Bolt	3	
5	W02-06	Washer	3	
6	N10-06	Nut	3	
7	B03-12	Bolt	2	
8	W02-06	Washer	2	
9	N10-06	Nut	2	
10	41376	Spacer (Firebird)	2	
11	41320-1	Flex tubing (440 Engine on Firebird and Thunderbird)	1	
	41320-2	Flex tubing (All others)	2	
12	31321	Clamp, Tubing	As Req.	
	31322	Clamp, Tubing	As Req.	
13	40287-1	Exhaust Manifold, 440 Engine on Firebird SS	2	
	40287-2	Exhaust Manifold, 400 Engine on Firebird SS	2	
14	41645-6	Engine, 400 Chaparral	1	
	41645-7	Engine, 440 Chaparral	1	
15	31650-2	Drive Belt	1	
16	41295-4	Drive Clutch, 910 (Used with 41645-3 engines)	1	
	41295-4	Drive Clutch, 910 (Used with 400 engines)	1	
	41295-5	Drive Clutch, 910 (Used with 440 Engines)	1	

ITEM NO.	PART NO.	DESCRIPTION	QTY PER ASSY.	FLAT RATE TIME
17	B07-84	Bolt	1	
18	W02-10	Washer	1	
19	W03-10	Washer	1	
20	41266-1	Bar, Motor Mount	1	
	40266-1	Bar, Motor Mount	1	
21	31267-3	Spacer, Motor Mount	4	
22	B06-40	Bolt	4	
23	W03-10	Lockwasher, Star	4	
24		Washer, Star	4	
25	B18-24	Bolt	4	
26	W02-08	Washer	4	
27	N06-08	Nut	4	
28	41459	Wire Clip	1	
29	41458	Wire Harness	1	

Figure 5-13

MUFFLER AND ENGINE MOUNTINGS
CCW

ITEM NO.	PART NO.	DESCRIPTION	QTY PER ASSY.	FLAT RATE TIME
1	31323	Tubing (-5 and -8 engines)	1	
2	31322	Wire Clamp Assembly (-5 and -8 engines)	1	
3	31313-3	Muffler Weldment (-5 and -8 engines)	1	0.3
	41313-2	Muffler Weldment (-1 Engine)	1	
4	31356	Clamp Assembly (-5 and -8	1	
	31327	Mounting Bracket	1	
	41350-1	Clamp Assembly (-1 Engine)	1	
5	B03-12	Bolt	2	
6	W02-06	Washer	2	
7	N10-06	Nut	2	
8	41319-2	Flex Tubing (-5 and -8 Engines)	1	0.2
	41319-1	Flex Tubing (-1 Engine)	1	0.2
9	31321	Wire Clamp Assembly (-5 and -8 Engines)	2	
	31321	Wire Clamp Assembly (-1 Engine)	2	
10	41265-1	Engine Assembly, 250	1	0.8
	41265-5	Engine Assembly, 340	1	0.8
	41265-8	Engine Assembly, 400	1	0.8
	41287-1	Exhaust Manifold (-1 engine)	1	
	31287-6	Exhaust Manifold (-5 engine)	1	
	31287-7	Exhaust Manifold (-7 engine)	1	
11	31650-2	Drive Belt, 910 (-5 and -8 Engine)	1	0.8
	41650	Drive Belt, 770 (-1 Engine)	1	
12	B07-84	Bolt (-5 and -8 Engines)	1	
	B07-72	Bolt (-1 Engine)	1	
13	W03-10	Lockwasher, Star	1	
14	W02-10	Washer	1	
15	31296-6	Drive Clutch, 910 (-5 and -8 Engine)	1	0.5
	41295-1	Drive Clutch, 770 (-1 Engine)	1	0.5
16	31266	Motor Mount Bar (-5 and -8 Engines)	2	0.8
	39266	Motor Mount Bar (-1 Engine)	1	0.8
17	31267-3	Spacer, Motor Mount (-5 and -8 Engines) 1 in. High	4	
18	31270	Sleeve (-5 and -8 Engines)	4	
19	W03-10	Lockwasher, Star (-5 and -8 Engines)	4	

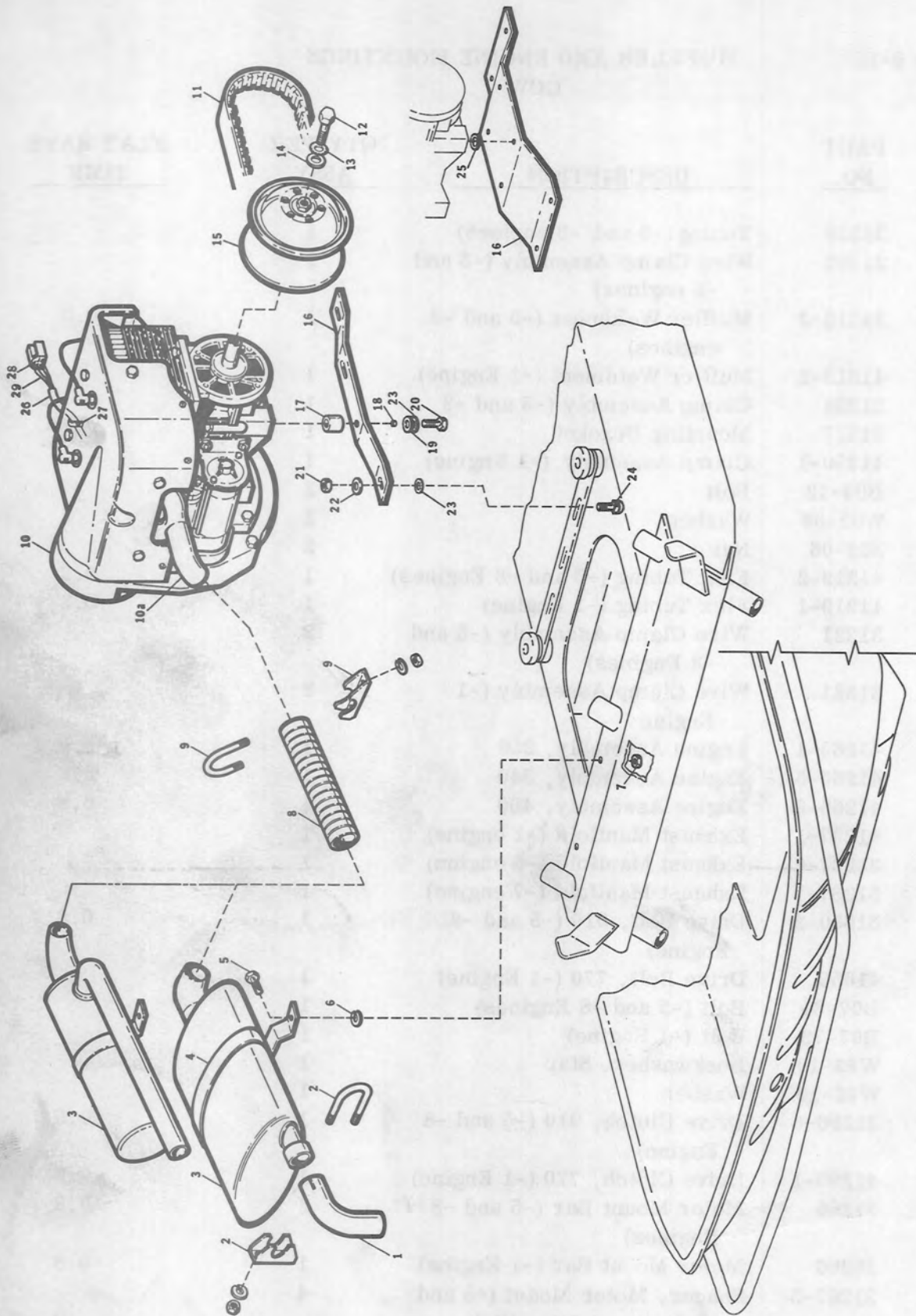
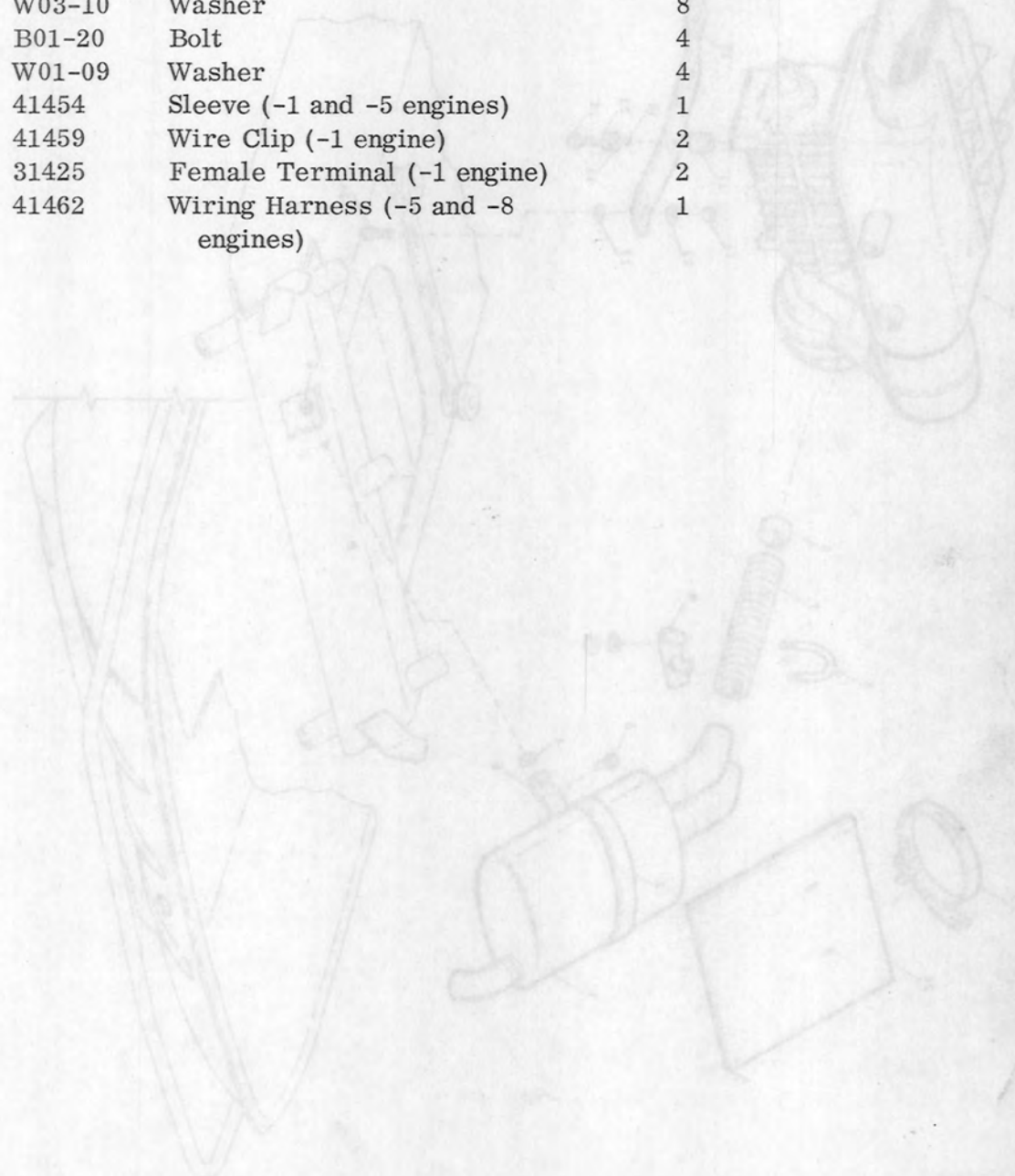


FIGURE 5-13. MUFFLER AND ENGINE MOUNTINGS - CCW

<u>ITEM NO.</u>	<u>PART NO.</u>	<u>DESCRIPTION</u>	<u>QTY PER ASSY</u>	<u>FLAT RATE TIME</u>
	W03-09	Lockwasher, Star (-1 Engine)	4	
20	B08-82	Bolt	4	
21	N06-08	Nut	4	
22	W02-08	Washer	4	
23	W03-10	Washer	8	
24	B01-20	Bolt	4	
25	W01-09	Washer	4	
26	41454	Sleeve (-1 and -5 engines)	1	
27	41459	Wire Clip (-1 engine)	2	
28	31425	Female Terminal (-1 engine)	2	
29	41462	Wiring Harness (-5 and -8 engines)	1	

MACHINE 2-14 MILLER VAD ENGINE NOMINAL C-8408



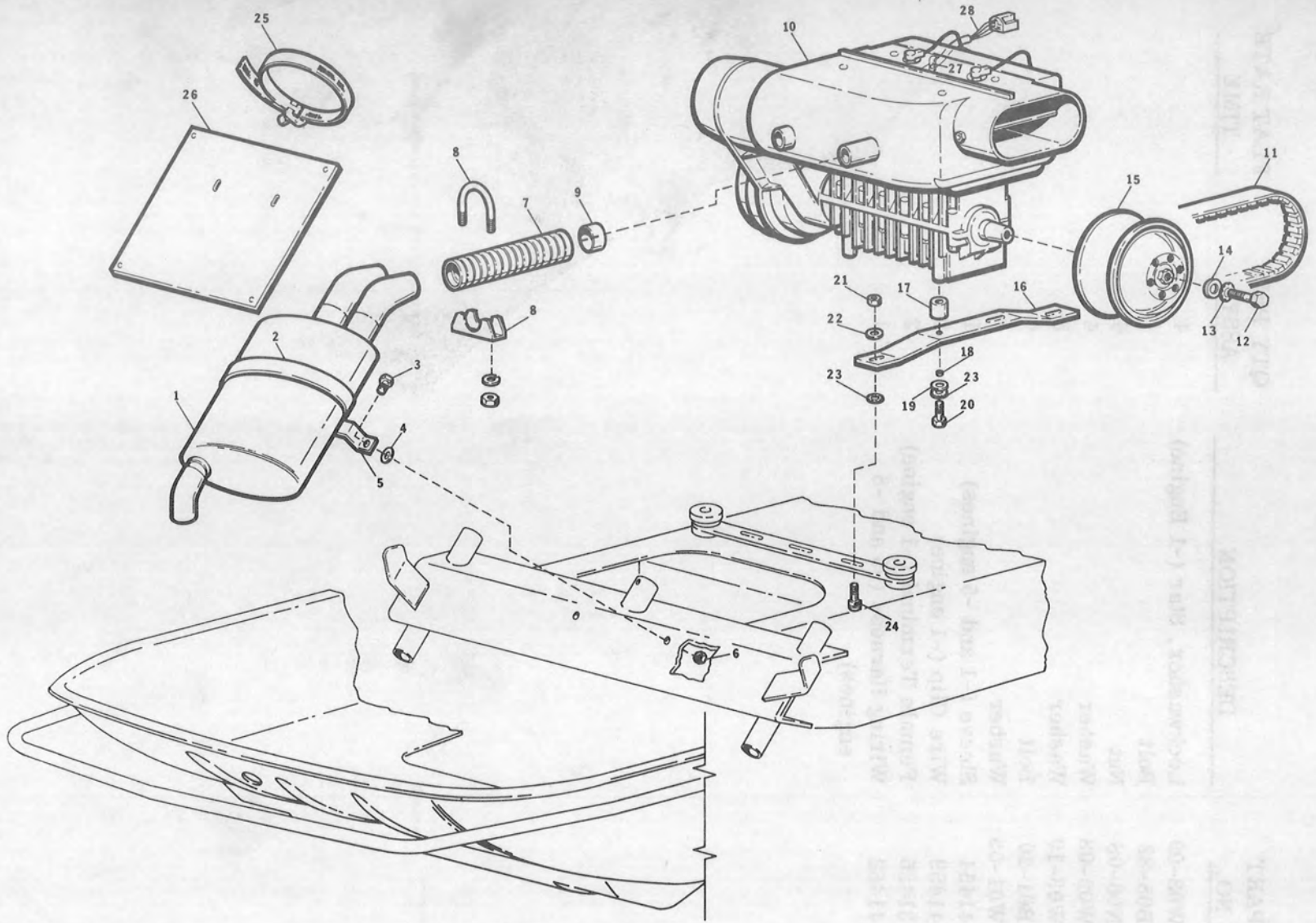


FIGURE 5-14. MUFFLER AND ENGINE MOUNTING SACHS

Figure 5-14

MUFFLER AND ENGINE MOUNTINGS
SACHS

ITEM NO.	PART NO.	DESCRIPTION	QTY PER ASSY	FLAT RATE TIME
1	31313-4	Muffler Weldment	1	0.3
2	31356	Clamp Assembly	1	
3	B03-12	Bolt	2	
4	W10-06	Washer	2	
5	31350	Muffler Bracket Weldment	1	0.2
6	N10-06	Nut	2	
7	41319-2	Flex Tubing	2	
8	31321	Clamp Assembly	4	
9	31284	Tubing	2	
10	1265-9	Engine Assembly 440 Sachs	1	0.8
11	31650-2	Drive Belt, 910	1	
12	B07-84	Bolt	1	
13	W03-10	Lockwasher, Star	1	
14	W02-10	Washer	1	
15	31296-2	Drive Clutch, 910	1	0.5
16	31266	Motor Mount Bar	2	0.8
17	31267-3	Spacer Motor Mount 7/16 in. High	4	
18	31270	Sleeve	4	
19	W03-10	Lockwasher, Star	4	
20	B06-28	Bolt	4	
21	N06-08	Nut	4	
22	W02-08	Washer	4	
23	W03-10	Washer	8	
24	B01-20	Bolt	4	
25	31021	Wire Clamp	1	
26	31018	Heat Shield	1	
27	41459	Wire Clip	1	
28	41461	Wire Harness	1	

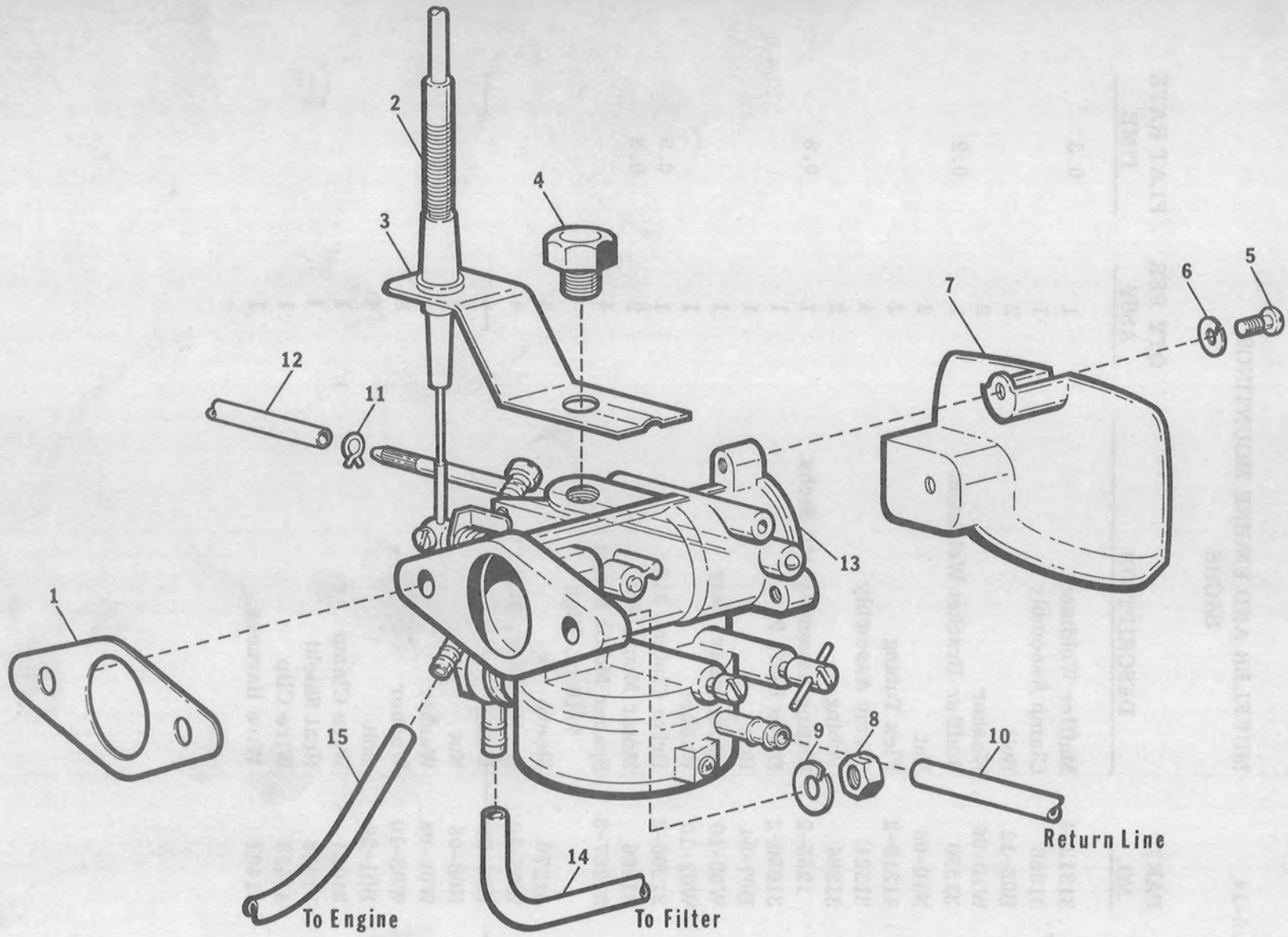


FIGURE 5-15. KEIHIN CARBURETOR ASSEMBLY

Note

Tillotson carburetor 31277-5, pages 5-36 and 5-37 dated 10-1-70 are still used with current production 250 CCW engines.

Figure 5-15

KEIHIN CARBURETOR ASSEMBLY

<u>ITEM NO.</u>	<u>PART NO.</u>	<u>DESCRIPTION</u>	<u>QTY PER ASSY.</u>	<u>FLAT RATE TIME</u>
1		Gasket (Part of Carburetor)	1	
2		Throttle Assembly (Refer to item figure)		
3	41361-2	Bracket	1	
4		Bolt (Part of Carburetor)	1	
5	M09-08	Screw	2	
6	W04-06	Lockwasher	2	
7	31307	Deflector (Used with 41277-2, -5, and -8 Carburetors)	1	
	31300	Deflector (Used with 41277-7, -9 and -11 Carburetors)	1	
8		Nut (furnished with engine)	2	
9		Washer (furnished with engine)	2	
10		Return line to gas tank		
11		Throttle hose clamp	1	
12		Flex tubing	1	
13	41277-2	Carburetor (Used with 292 Hirth engines)	1	0.5
	41277-5	Carburetor (Used with 340 CCW engines)	1	0.5
	41277-7	Carburetor (Used with 400 Chaparral engines)	1	0.5
	41277-8	Carburetor (Used with 400 CCW engines)	1	0.5
	41277-9	Carburetor (Used with 440 Sachs engines)	1	0.5
	41277-11	Carburetor (Used with 440 Chaparral engines)	1	0.5
14		Gas line to filter	1	
15		Gas line to engine	1	
	31308	Plate, Cover	AR	

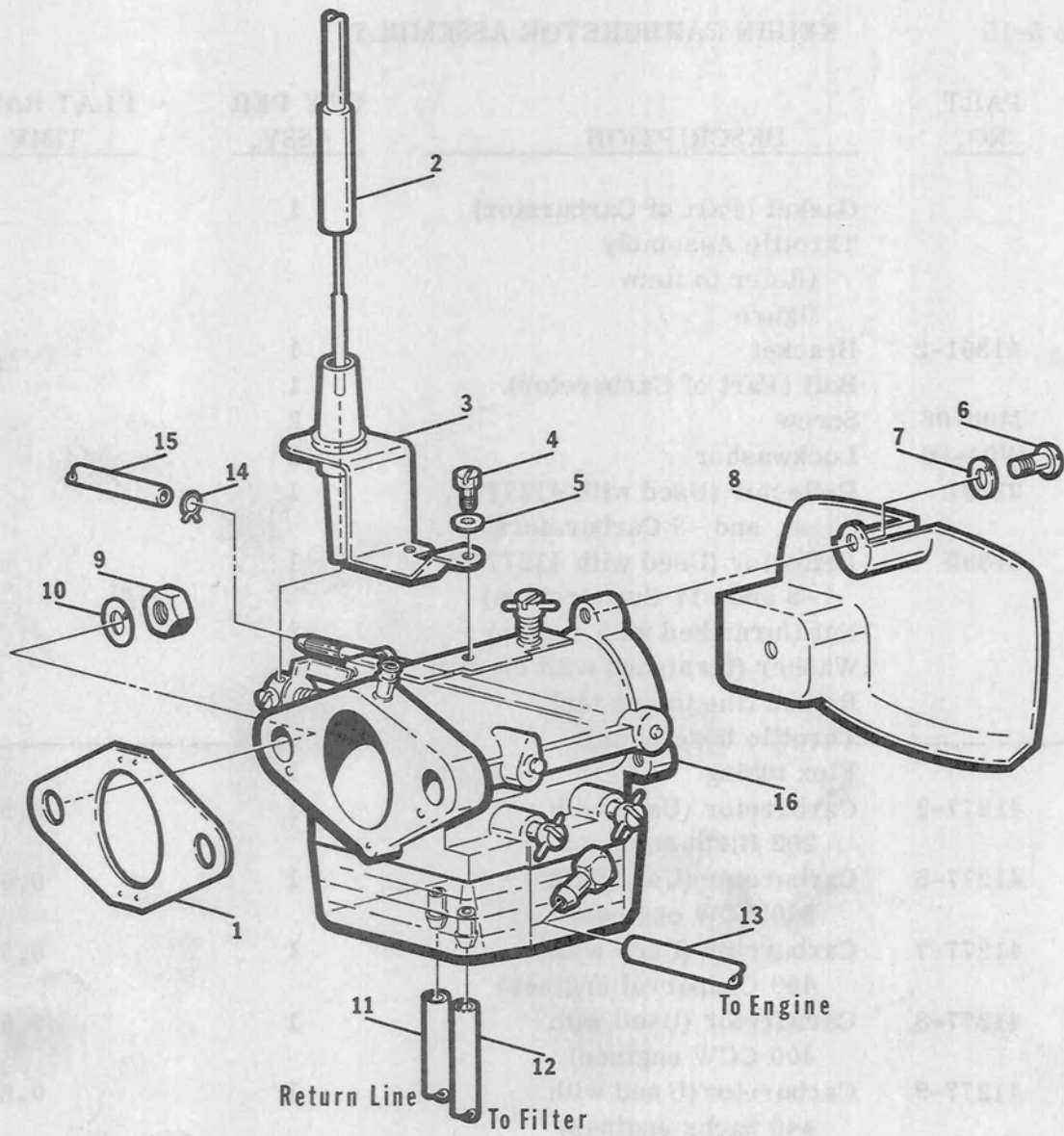


FIGURE 5-16. WALBRO CARBURETOR ASSEMBLY

Figure 5-16

WALBRO CARBURETOR ASSEMBLY

<u>ITEM NO.</u>	<u>PART NO.</u>	<u>DESCRIPTION</u>	<u>QTY PER ASSY.</u>	<u>FLAT RATE TIME</u>
1		Gasket (Part of Carburetor)	1	
2		Throttle Assembly (Refer to item figure)		
3	41361-1	Bracket	1	
4		Screw (Part of Carburetor)	1	
5		Washer (Part of Carburetor)	1	
6	M09-08	Screw	2	
7	W04-06	Lockwasher	2	
8	31307	Deflector		
9		Nut (furnished with engine)	2	
10		Washer (furnished with engine)	2	
11		Gas line return	1	
12		Gas line to filter	1	
13		Gas line to engine	1	
14		Hose Clamp (See Choke Assembly)	1	
15		Flex tubing (See Choke Assembly)	1	
16	41277-3	Carburetor (Used with 292 Hirth engines)	1	0.5
	41277-4	Carburetor (Used with 340 Hirth engines)	1	0.5
	41277-6	Carburetor (Used with 400 Hirth engines)	1	0.5
	41277-10	Carburetor (Used with 440 Hirth engines)	1	0.5
	41277-12	Carburetor (Used with 650 Hirth engines)	1	0.5
	41308	Plate, Cover	AR	

DEALER PARTS KIT

<u>ITEM NO.</u>	<u>DESCRIPTION</u>	<u>QUANTITY</u>
31014	Bushing, Spindle	4
31015	Bushing, Tiller	2
40042	Lens, Tail Light (SK & SP)	2
41042	Lens, Tail Light (FB & TB)	2
31059	Tank, Gas (SK, FB, TB)	1
31060-1	Cap & Gauge (SK)	1
31060-2	Cap & Gauge (SP)	1
31060-3	Cap & Gauge (FB & TB)	1
31061	Line, Gas	5 ft
31063	Fuel Filter Assy	1
31099	Latch, Hood	2
31137-1	Chain (15 Tooth)	1
31137-2	Chain (17 Tooth)	1
31137-3	Chain (19 Tooth)	1
31140	Bearing, 1"	4
31162	Oil Plug	1
31170	Brake Pads	6 sets
31188	Drive Sprocket (SK)	2
40188	Drive Sprocket (SP)	2
32188	Sprocket (FB & TB)	2
31146	Collar, 1" Lock	2
31206	Axle, Main	1
32206	Axle, Main	1
31223	Bogie Brkt. Assy	4
31217	Bogie Brkt. Center	2
32214	Spacer Main Axle	2
32215	Spacer Bogie Axle	2
31208	Axle, Front Bogie, Long	2
32208	Axle, Front Bogie (TB)	2
31207	Axle, Rear Bogie, Short	2
32207	Axle, Rear Bogie, (TB)	2
31225	Wheel, Bogie	6
31237	Idler Wheel	4
31246	Track Hanger Weldment	2
31256-1	Spring, Rear L.H.	3
31256-2	Spring, Rear R.H.	3
31259-1	Washer, Flat	2
31260	Adjusting Bolt Stud.	4
31261	Bolt, Adjusting	4
B12-10	Bolt (Bogie Assy)	4
B07-84	Clutch Bolt	1
B07-72	Clutch Bolt	1

DEALER PARTS KIT (Continued)

<u>ITEM NO.</u>	<u>DESCRIPTION</u>	<u>QUANTITY</u>
41320	Flex Tubing	3
31352	Grease Fitting	2
39360	Throttle Cable & Housing (Keihen) (SK)	1
41360-1	Throttle Cable & Housing (300 & 340 H Walbro WR)	1
41360-2	Throttle Cable & Housing (340 & 400 ccw Keihen HR)	1
41360-3	Throttle Cable & Housing (440 S, 400 & 440 C Keihin HD)	1
41360-4	Throttle Cable & Housing (400, 440 & 650 H Walbro WD)	1
31366	Brake Cable & Housing (SK)	1
41366	Brake Cable & Housing (FB)	1
41366	Brake Cable & Housing (SP & TB)	1
31367	Clevis (SK & FB)	2
42367	Clevis & Switch (SP & TB)	1
31368	Spring	4
B01-16	Bolt	2
31377	Spindle	2
31378	Wave Washer, Spindle	2
31379	Steering Arm	2
31386	Rod End, R.H.	2
31387	Rod End, L.H.	2
41397-1	Hood Decal, L.H.	2
41397-2	Hood Decal, R.H.	2
31398	Headlight	1
31411-60	Light Bulb 60 W	6
31411-45	Light Bulb 45 W	2
31413-1	Decal (SK)	2
40413-1	Decal (SP)	2
40413-2	Decal (FB)	2
42413	Decal (TB)	2
31414-1	Windshield (SK, FB, TB)	2
31414-3	Windshield (SP)	1
31415-1	Trim - Chrome Vinyl (SK, FB, TB)	2
31415-3	Trim - Chrome Vinyl (SP)	1
41421	Wire Harness	1
41439-1	Foot Pad Fwd., L.H.	1
41440-1	Foot Pad, L.H.	1
41439-2	Foot Pad Fwd., R.H.	1
41440-2	Foot Pad, R.H.	1
31450	Spring	2

DEALER PARTS KIT (Continued)

<u>ITEM NO.</u>	<u>DESCRIPTION</u>	<u>QUANTITY</u>
31565	Switch, Ignition	2
31566	Nut, Ignition Switch	2
41501-1	Windshield Bolt	12
N06-06	Windshield Locknut	12
41591	Ski Weldment (SK, FB, TB)	2
40591	Ski Weldment (SP)	2
31598	Hanger, Ski	2
31599	Spring, Main	2
31600	Spring, Center	2
31601	Spring, Top	2
31613-2	Bolt, Spindle	2
31613-3	Bolt, Spindle	2
PZ6-12	Cotter Pin	6
31606	Wear Plate	4
41607	Skag Weldment	6
N06-07	Locknut	4
31613-1	Bolt, Ski Hanger	2
31612	Bumper, Ski	4
N07-08	Locknut	2
31650-1	770 Drive Belt	3
31650-2	910 Drive Belt	3
31138	Bearing Cup	2
31139	Bearing Cone	2
31028	Diode	2
41085	Motor Mount Bar	1
42085	Motor Mount Bar (TB)	1
31663	Carb Kit (Keihin HR)	2
31662	Carb Kit (Keihin HD)	2
41665	Carb Kit (Walbro WR)	2
41666	Carb Kit (Walbro WD)	2

PROCEDURE FOR PARTS ORDERS

Chaparral Industries will strive to offer the best in a parts and service program in the Snowmobile industry. In order to do this we will need help from our dealers and distributors in ordering parts from the factory.

Our dealer parts package will be adequate for the initial requirements of stocking parts. However, for additional parts orders the following procedure will need to be followed:

1. Preferably all orders submitted in writing on customer purchase order giving quantity, part number, description, price and method of shipment, etc. Sample attached.
2. Orders phoned in must be submitted with complete information as described in number one above. Phone orders should be held to a minimum and for emergencies only. Emergency shipments must allow sufficient time for shipment or pick up after received by Chaparral Industries.
3. Because of costs involved in processing and shipping individual orders it will be necessary for us to establish the minimum dollar value to orders processed.

Dollar value is net invoice after applicable discounts.

4. Back orders will be automatically written unless specifically instructed to cancel. Back orders will be shipped at the earliest possible time when the parts or accessories become available. We will do all possible to hold back orders to a minimum, but will need your assistance so that duplicate orders are not written.

Note

Chaparral Industries will not accept orders directly from dealers who are operating under a distributor. Parts must be ordered from that distributor.

