

Secure Host Explorer FTP Setup

Setup Instructions

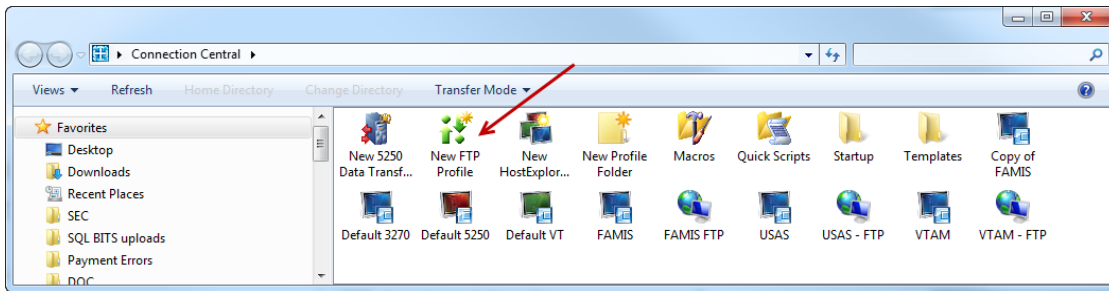
Host Explorer is the terminal emulation software that allows users to connect their PC to the mainframe in a secure environment. For example, this allows users to connect to mainframe systems such as FAMIS and BPP. A useful component to this software is **Host Explorer FTP**, which allows users to accomplish secure data file transfers. If you haven't already changed your Host Explorer FTP settings, then follow the instructions below to set up your "secure" ftp client.

Begin using Host Explorer FTP:

- Click All Programs Open Text Host explorer / Connection Central (Doing this brings up a **Connection Central** panel).

Set Up a New Profile:

- Double click on the New FTP Profile item




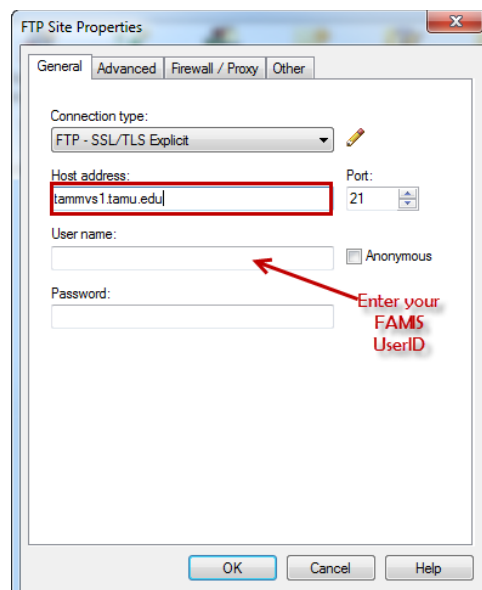
FTP Site Properties Box Settings:

General Tab Settings

- Fill in the host address for the server you will connect to.
For example, to connect to the TAMU-CIS mainframe, use the following settings:

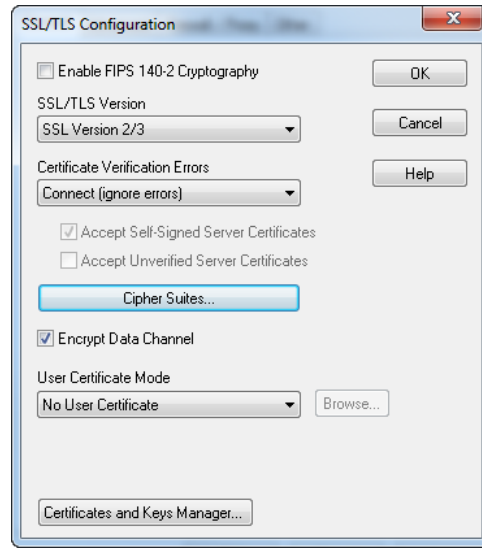
Connection TypeSSL/TLS Explicit
Host addresstammvs1.tamu.edu
Port.....21
User nameFAMIS user id
Anonymousunchecked
Passwordleave blank
To configure the FTP SSL/TLS settings:

- Click on the  button



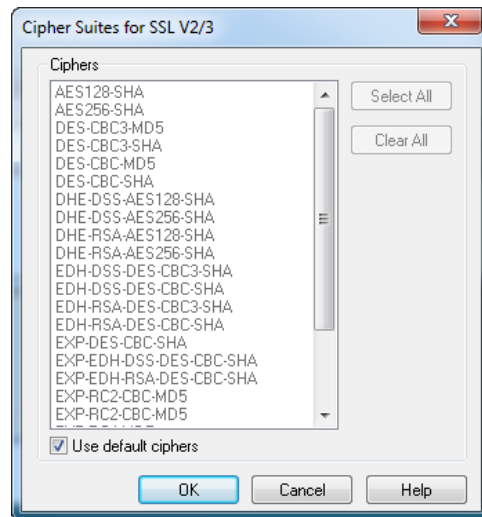
SSL/TLS Configuration Settings:

Enable FIPS140-2
Cryptographyleave unchecked
SSL/TLS VersionSSL Version 2/3
Certificate Verification
Errors.....Connect (ignore errors)
Accept Self-Signed
Server Certificates.....checked (grayed out)
Accept Unverified
Server Certificates.....unchecked (grayed out)
Encrypt Data Channelchecked
User Certificate Mode.....No User Certificate



Click on Cipher Suites

- Use default ciphers checked



- When complete, click on the **Advanced Tab**.

Advanced Tab Settings

- Enable Directory Caching checked
- Passive Mode checked (may have to click on the box twice)
- Update Cache on Connect unchecked
- Allow Optimized Transfer checked
- Automatically Resolve Links..... checked
- Drop Version Numbers On VMS unchecked
- Allow transfer Resume unchecked
- Extended Address Syntax leave as shaded box

Protocol Settings:

- Network Timeout 120
- Keep Alive unchecked

Time and Date conversion Settings:

- Convert From GMT unchecked
- Date/Time Format..... unchecked
- Hour Offset..... 0 (zero)
- Minute Offset..... 0 (zero)

Commands To Send On Connect.....blank

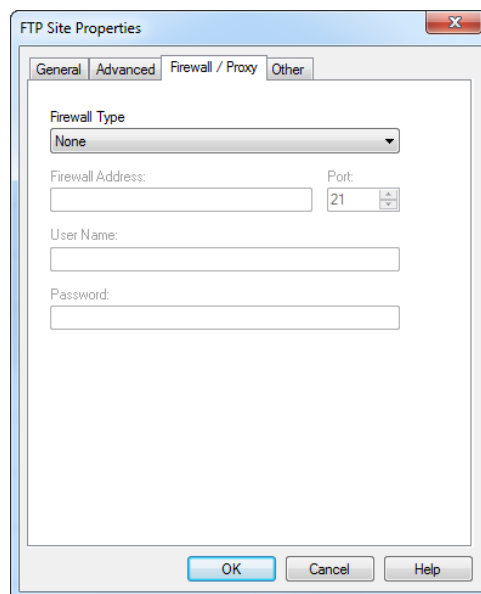
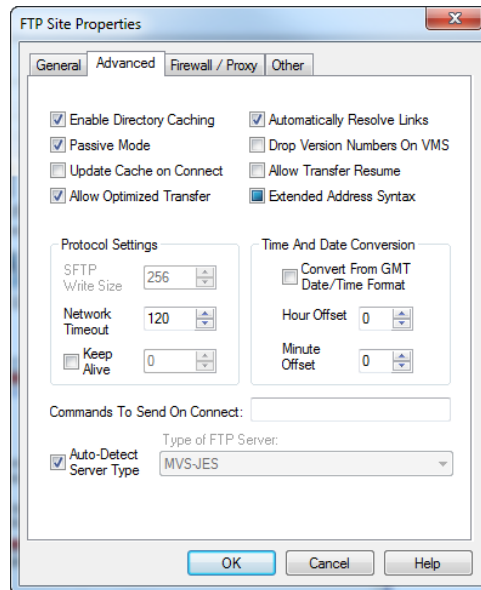
Type of FTP Server

Auto-Detect Server Type..... checked

- When complete, click on the **Firewall/Proxy Tab**.

Firewall/Proxy Tab Settings

- Firewall Type None
- Firewall Address blank
- Port..... “grayed out 21”
- User Name blank
- Password blank

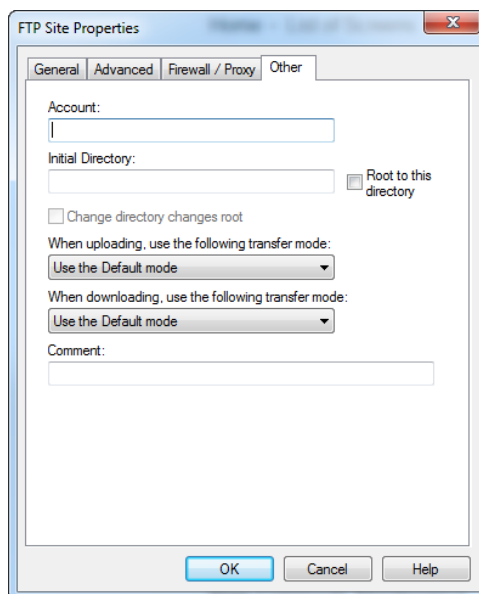


- When complete, click on the **Other Tab**

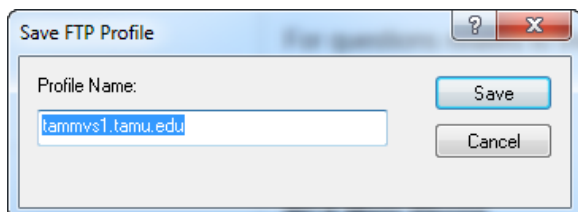
Other Tab Settings

Account blank
Initial Directory leave blank
or
fill in with specific
download/upload location
(Must have a single quote
before and after the location)
For Example:
'K702XX.AR.VSAM'

Root to This Directory leave unchecked
Change directory
changes root leave unchecked
When uploading,
use the following
transfer mode Use the Default mode
When downloading,
use the following
transfer mode Use the Default mode
Comment blank



- Click **OK** button to complete setup.
- You will be prompted to save your new profile:



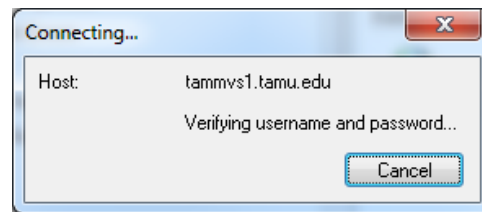
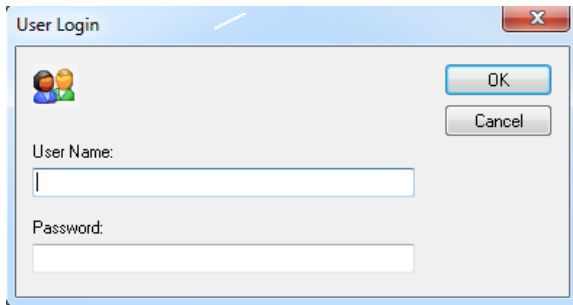
- The default name will be the Host address, but you can rename it to be anything.
 - If you are setting up multiple FTP locations (multiple initial directories), you may want to name them to match the FTP site or job
- Once the new profile has been created, you can right click on your new profile and click **Create Shortcut** to place an icon on your Desktop (for ease of use).

Download File with Host Explorer FTP Client

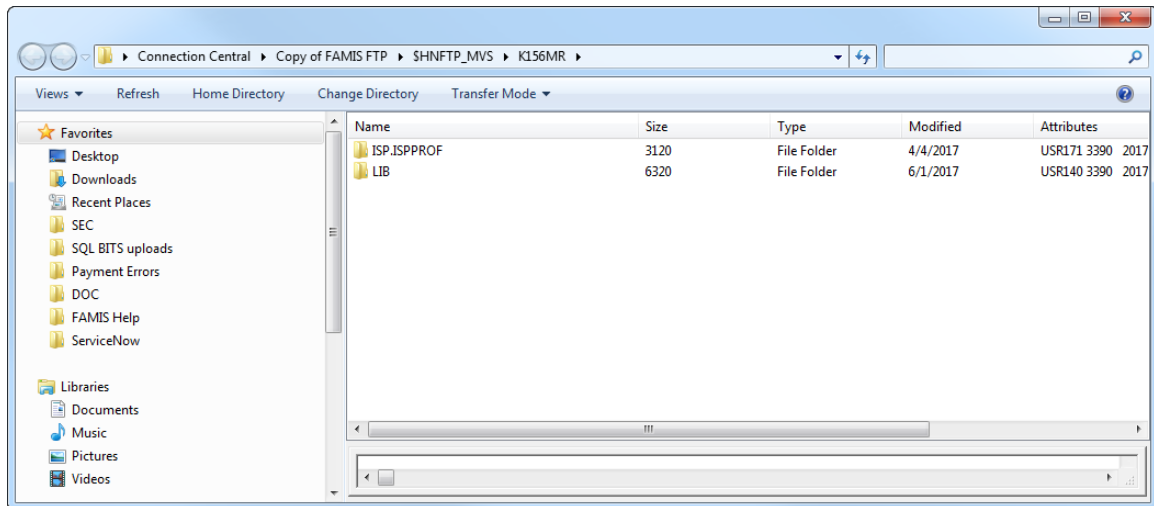


From your PC Desktop, double click the new Hummingbird FTP icon to launch the Hummingbird FTP client or Select the appropriate profile from Connection Central

1. In the **User Login** box, fill in your User Name and Password to match your FAMIS UserID (you may have to do this twice as it builds directory information).

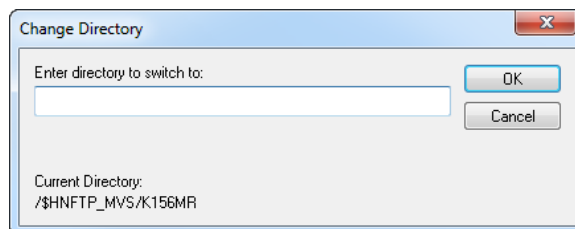


This will connect you to the TAMU-CIS mainframe.



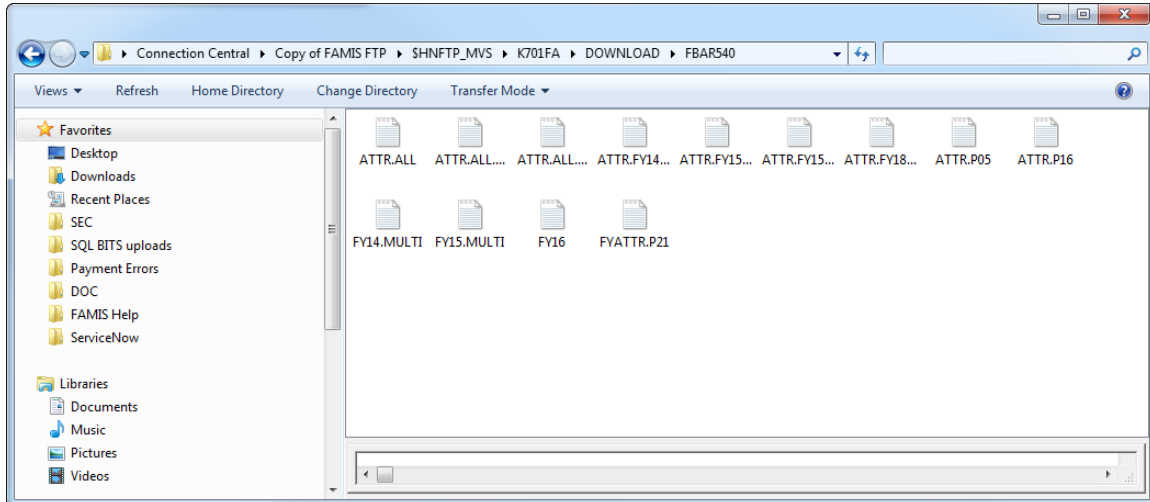
2. From here, you can use the Change Directory (located at the top of the panel in the middle) icon to change the directory to the files you want to see or seek to download.

- For example, click on the Change Directory icon and fill in the " Enter directory to switch to: " box with:
'k701fa.download.fbar540'
(remember to place a single quote before and after the file name)
- Click Okay



Download File with Host Explorer FTP Client (cont'd)

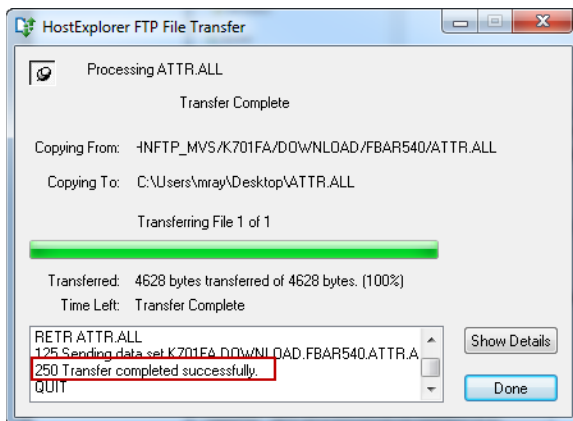
3. All of the files that are located in that destination will appear:



- Click to highlight the file that you want to download
- Right click and click on **Download** to download the file to your PC.
- Choose the folder to save it in
- Change the file name (if preferred)
- Click on the Save button to download the file

Remember the save file name!

4. Wait until download is completed...with proper messages...to assure transfer is complete.



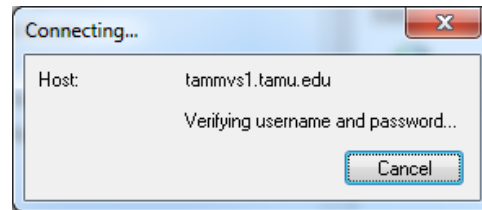
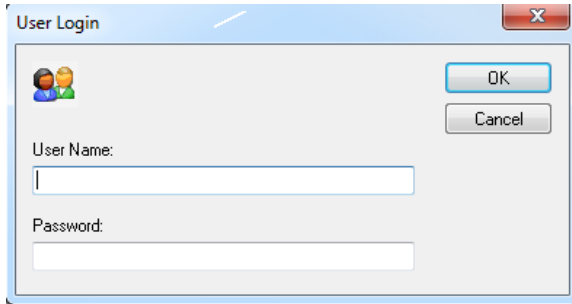
5. Click the **Done** button.
 - To find the file downloaded on your PC, look in the folder for the name you chose when saving the file.

Upload File with Host Explorer FTP Client

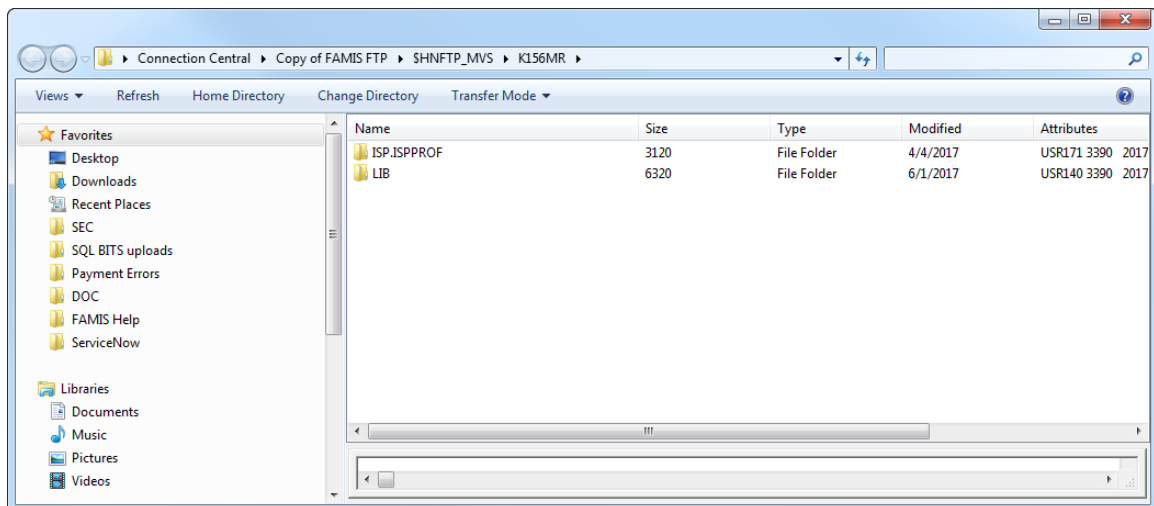


From your PC Desktop, double click the new Hummingbird FTP icon to launch the Hummingbird FTP client or
Select the appropriate profile from Connection Central or
Create a new FTP profile

1. In the **User Login** box, fill in your User Name and Password to match your FAMIS UserID (you may have to do this twice as it builds directory information).

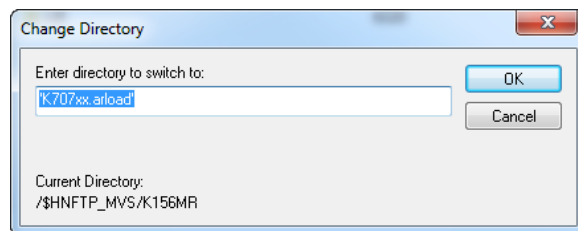


This will connect you to the TAMU-CIS mainframe.



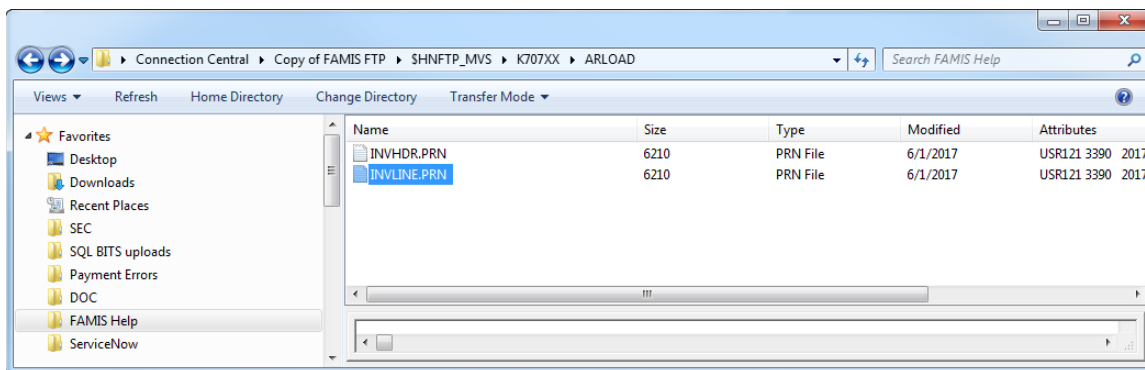
2. From here, you can use the Change Directory (located at the top of the panel in the middle) icon to change the directory to the location on the mainframe to upload your files.

- For example, click on the Change Directory icon and fill in the " Enter directory to switch to: " box with:
'K707xx.arload'
(remember to place a single quote before and after the file name)
- Click Okay

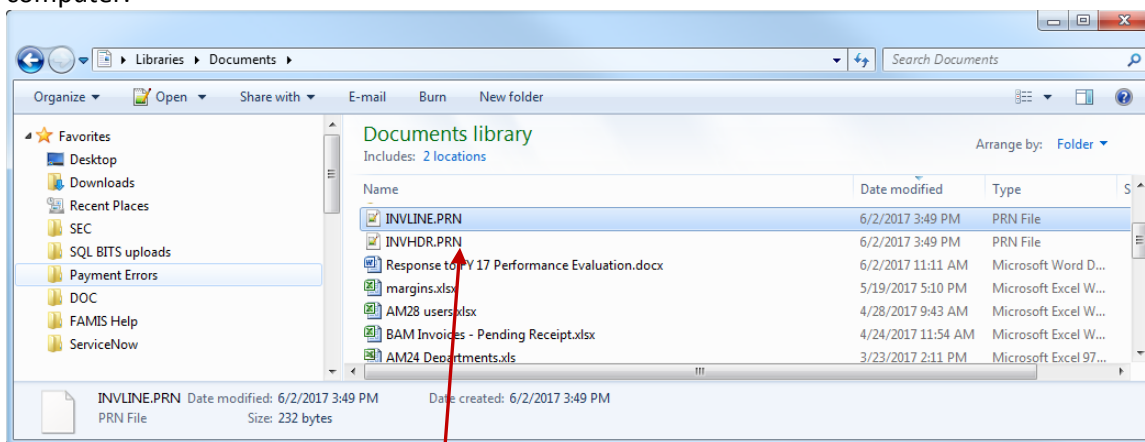


Upload File with Host Explorer FTP Client (cont'd)

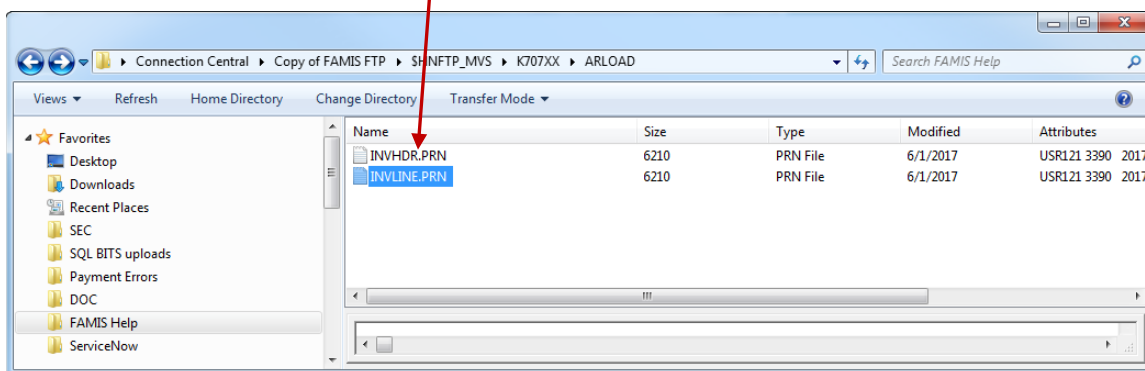
- All of the files that are located in that destination will appear:



- Open a file Explorer window displaying where the file to be uploaded is stored on your local computer:

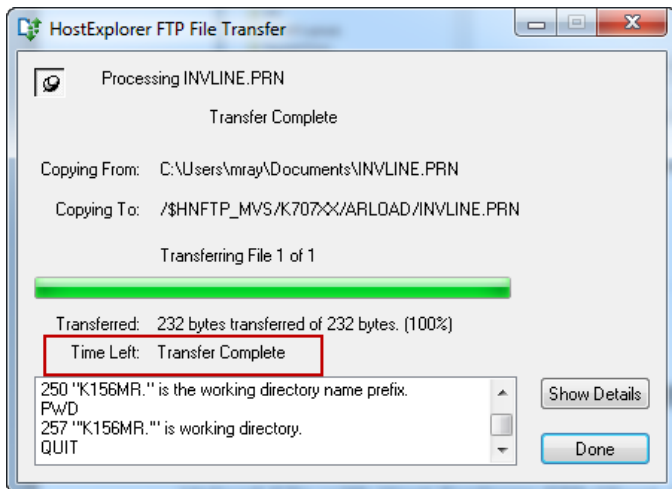


In this example, the file name on your PC must be **invline.prn** or **invhdr.prn** (based on FAMIS naming conventions for this job). “Drag and drop” this new file and place it into the **k707xx.arload** directory. (Therefore, your complete file name created on the mainframe from this successful upload would be **k707xx.arload.invline.prn**)



Upload File with Host Explorer FTP Client (cont'd)

3. A **Host Explorer File Transfer** box will pop-up, showing you the progress of your upload. Wait until the upload is completed...with proper messages...to assure transfer is complete.



4. When you see the Transfer Complete message, click the **Done** button to close the pop-up

Contact FAMIS Production Services

The final step (if **this file needs to be posted in FAMIS**) in the upload process is to send an email to famisprod@tamus.edu telling us that your file has been uploaded to the mainframe and is ready to be posted into FAMIS. Be sure to give the entire file name (i.e., **k707xx.arload.invline.prn**).

Contact FAMIS Production Services at (979) 458-6470, if you have any questions with the Hummingbird FTP Process.

K:\FA\DOC\REF\Host Explorer FTPnf.docx
As of 10/17/2017 1:59 PM