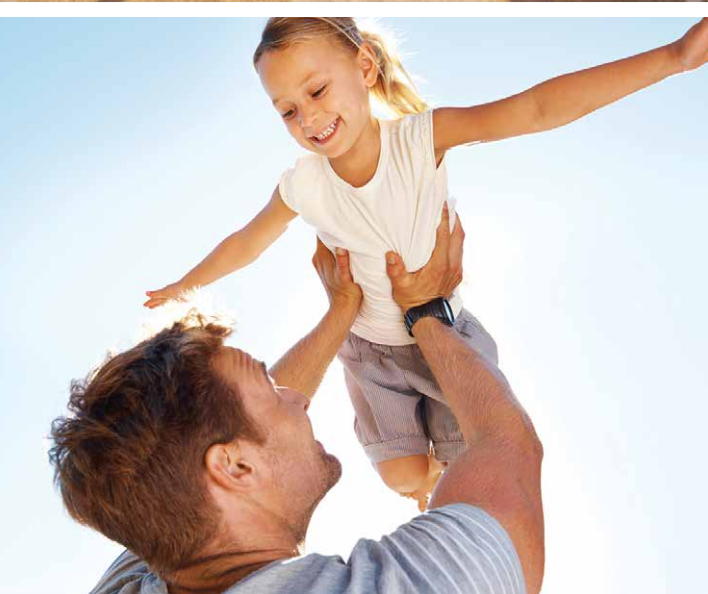




**BENTEL**  
**SECURITY**

*From Tyco Security Products*

**SECURITY SYSTEMS**  
CATALOG 2014 • 2015



# Mtouch

The new TouchScreen for simplified living.



The M-Touch TouchScreen keypad boasts an extremely user-friendly menu to perfectly complement the ABSOLUTA Series control panels, guaranteeing complete control of the security system and associated electrical devices for total peace of mind.

For care-free living, a powerful and intuitive user interface is packaged in a clean and versatile design, allowing you to comfortably manage all home-related activities with just a touch of the screen.

**M-Touch – all you need with just a touch.**



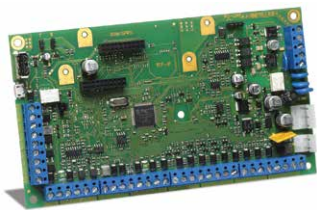
ABSOLUTA Control Panels  
EN50131 Grade 2



### ABSOLUTA Control Panels Platform

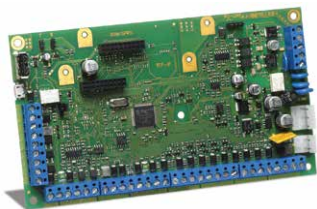
COMMON FEATURES  
(ABSOLUTA104, 42, 16 control panels):

- Voice dialer on-board
- Voice messages for each event/zone
- Telephonic voice guide
- Program up to 32 phone numbers
- Fully customizable digital dialer
- USB port for USB keys and PC programming
- Shortcut types of arming keys per 4 partitions
- Basic home automation functions
- Fully programmable outputs: polarity, timing, oscillation, and event triggers
- Event logger contains 2,000 events
- On-board connectors for GSM and IP add-on boards
- Powerful Bentel Operating Security Software (BOSS)
- ABSOLUTA panel available in industrial metal cabinet or sleek plastic cabinet
- Vibration and Roller-Blind Detector support
- ABSOLUTA APP for remote system control
- Push notification on smartphones
- Support for M-Touch TouchScreen keypad



### ABSOLUTA104 Expandable Hybrid Control Panel for Large-Scale Installations

- Up to 8 on-board zones
- Expandable to 104 input zones
- Up to 32 wireless zones
- Connect to 16 LCD or M-Touch keypads
- 250 keys/tags
- 16 partitions
- Up to 6 on-board outputs expandable to 50



### ABSOLUTA42 Expandable Hybrid Control Panel for Medium-Size Installations

- Up to 8 on-board zones
- Expandable to 42 input zones
- Up to 32 wireless zones
- Connect to 8 LCD or M-Touch keypads
- 128 keys/tags
- 8 partitions
- Up to 6 on-board outputs expandable to 20



### ABSOLUTA16 Expandable Hybrid Control Panel for Small/Medium-Size Installations

- Up to 8 on-board zones
- Expandable to 16 wired input zones
- Up to 32 wireless zones (including wired)
- Connect to 8 LCD or M-Touch keypads
- 64 keys/tags
- Up to 6 on-board outputs

Some products are not available in all countries. Contact your local distributor for details.

## ABSOLUTA Control Panels EN50131 Grade 3

### COMMON FEATURES

(ABSOLUTA 104-G3, 16-G3 control panels):

- Triple balancing
- Super-user privileges for complete system management
- Optional GSM/GPRS board and IP board
- 8 zones on board
- USB port for PC programming
- Support for M-Touch TouchScreen keypad
- Home automation functions
- ABSOLUTA APP for remote system control
- Push notification on smartphones
- Fully programmable outputs: polarity, timing, oscillation and event triggers
- 32 phone number and 32 address e-mail agenda
- Voice dialer on board with 20 min of voice; voice messages for each event/zone
- Telephonic voice guide
- Fully customizable digital dialer
- 4 shortcut arming modes available
- Event logger containing 2,000 events
- Powerful Bentel Operating Security Software (BOSS)
- 13,8V, 5 Amp power supply
- White metal cabinet 310x403x104 mm with wall removing and opening tamperers

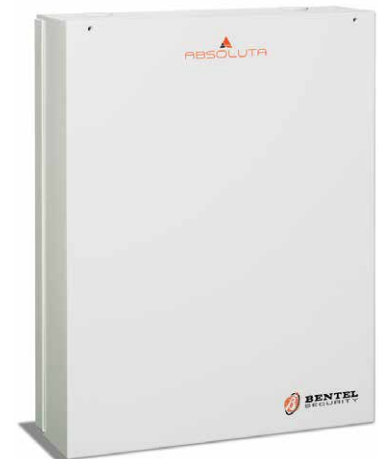
### ABSOLUTA104-G3 Expandable Hybrid Control Panel for Large-Scale Installations

- Maximum number of wired zones 104
- Maximum number of wireless zones 32\*
- Number of user/installer codes 127/2
- Number of keypads 16
- Number of key tags/keyfobs 250/16
- Number of key/card readers 16
- Number of input/output expanders 32/16
- Number of power supply stations 4
- Number of partitions 16
- Maximum number of outputs 50

### ABSOLUTA16-G3 Expandable Hybrid Control Panel for Large-Scale Installations

- Maximum number of wired zones 16
- Maximum number of wireless zones 32\*
- Number of user/installer codes 31/2
- Number of keypads 8
- Number of key tags/ keyfobs 64/16
- Number of key/card readers 16
- Number of input/output expanders 16/6
- Number of power supply stations 4
- Number of partitions 8
- Maximum number of outputs 6

\* For non Grade 3 wireless subsystems



EN50131 Grade 2 & 3 compatible

The ABSOLUTA APP for smartphones is designed to remotely manage ABSOLUTA control panels and to make managing the security system even easier for the end user. The innovative Real Time Push Notifications service allows the user to easily and effectively monitor the entire system.

Two versions of the ABSOLUTA APP (free with basic functionality and PRO with additional features) are available for both iPhone and Android devices and can be downloaded online from the iTunes or Google Play Store.



Some products are not available in all countries. Contact your local distributor for details.

## ABSOLUTA add-on boards

### ABS-GSM GSM/GPRS/SMS Communication Board for ABSOLUTA Control Panels



- Quad-band GSM module with remote antenna
- GSM voice messages transmission
- Voice messages sent after commands from the control panel
- Automatic message for panel fault
- SMS bidirectional communication over GSM (incoming and outgoing management of SMS for home automation functions)
- Contact ID transmission over GSM voice channel
- Credit and SIM control via SMS and from LCD keypad
- SMS for each zone alarm/event
- Caller ID recognition for outputs activation
- Contemporary communications via PSTN (voice) and via SMS management
- Answering machine through GSM channel



### ABS-IP LAN/WAN Communication Board for ABSOLUTA Control Panels

- LAN/WAN internet protocol
- 128 bit encryption (secure)
- Up/download and event transmission
- Alarm reception via Sur-Gard receivers
- Integration protocol for third party systems

Some products are not available in all countries. Contact your local distributor for details.

## ABSOLUTA Accessories

Model	Description
ABS-M	Metallic box dimensions: 310x403x103 mm (without antenna); battery up to 17 Ah, tamper switch included
ABS-P	Plastic box dimensions: 319x352x92 mm (without antenna); battery up to 7 Ah, tamper switch included
BAQ15	Switching Power Supply 1,5 A
BAQ35T12	Switching Power Supply 3,5 A
BAQ60T12	Switching Power Supply 5 A
M-IN/OUT	Module with 6 programmable IN/OUT terminals
B-ISOL	Isolator module for isolating two sections of the BPI bus
USB5M	5 mt USB cable for local panel programming
MAXI ASNC	Anti-tamper and snatch kit
BXM12/30-50 BPI	External power supply station
ABSD-INT	English/French set of manuals for ABSOLUTA
ABSD-IBE	Spanish/Portuguese set of manuals for ABSOLUTA

### ABS-VAP11N WiFi Bridge for ABS-IP

- Easy connection to any WiFi networks
- Transmission range (without obstacle): 100m
- Powered by ABS-IP
- Automatic WiFi hotspot scan and WiFi hotspot memory function
- WPA-PSK/WPA2-PSK, 64/128/WEP security mechanism
- 802.11n WiFi transmission protocol, 150 Mbps rate of transmission



### AS-100 Audio Station for ABSOLUTA Control Panels

- Equipped with speaker/microphone
- New modern look
- 4-wire connection to module
- Specifically designed for 2-way voice verification
- Surface or single-gang box mount



Some products are not available in all countries. Contact your local distributor for details.

## ABSOLUTA Features Comparison Chart

Features	EN Grade 2			EN Grade 3	
	ABS 16	ABS 42	ABS 104	ABS 16-G3	ABS 104-G3
Maximum number of wired zones	16	42	104	16	104
Maximum number of wireless zones	32	32	32	32*	32*
Total maximum number of combined (wired and wireless) zones	32	42	104	32	104
Number of user codes	31	63	127	31	63
Number of installer codes	2	2	2	2	2
Number of keypads	8	8	16	8	16
Number of key tags	64	128	250	64	250
Number of keyfobs	16	32	32	16	32
Number of key/card readers	16	16	16	16	16
Number of input/output expanders	16/6	32/16	32/16	16/6	32/16
Number of power supply stations	4	4	4	4	4
Number of partitions	8	8	16	8	16
Maximum number of outputs	6	20	50	6	50
Timers	16	16	16	16	16
Vocal messages	206	206	206	206	206
Numbers phone book agenda	32	32	32	32	32
Email addresses@	32	32	32	32	32
ABS-APP	✓	✓	✓	✓	✓
DTMF ARMING	✓	✓	✓	✗	✗
SMS ARMING	✓	✓	✓	✗	✗
Triple Balancing zones	✗	✗	✗	✓	✓
Power Supply	Sold separately: BAQ15, BAQ35, BAQ60			13,8V, 5 Amps	
Cabinet	Sold separately: ABS-M; ABS-P			White metal 310x403x103	
Tamper	Opening; wall removing optional			Opening and wall removing	

\* Per sottosistemi wireless non di Grado 3

Some products are not available in all countries. Contact your local distributor for details.



## Keypads & Management Devices

### ABSOLUTA M-TOUCH TouchScreen Keypad

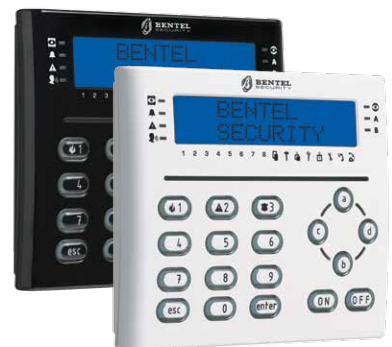
With its slim and modern design and a 7" full color display, M-Touch is the perfect solution for controlling your home security. Its large, clearly recognizable on-screen buttons and intuitive menu-driven screens facilitate ease of use and programming.

- 7" full color display
- Slim modern design (800x480 resolution)
- Intuitive LED indication of security system status
- Picture frame feature
- Clock feature
- Output control
- Intuitive user interface
- Customizable home screen and wallpaper
- Menu user programming
- Installer programming
- Virtual keypad
- SD card
- Digital picture frame mode
- Compatible with ABSOLUTA Series control panels
- Available in 9 languages



### ABSOLUTA T-WHITE & T-BLACK Keypads

- Color: white or black with blue backlight
- Integrated proximity reader for keys, cards and tags
- 3 on-board I/O terminals
- Supports Roller Blind detectors
- Very simple and fast installation without cabling problems: terminals only on the back
- Integrated "spirit level" for easy installation
- 2x16 blue LCD display
- Adjustable display contrast
- 4 system status LEDs
- 3 proximity reader LEDs: arming, A and B arming



### PREMIUM LCD Keypad

- Integrated proximity reader for keys, cards and tags
- 3 on-board I/O terminals
- Supports Roller Blind detectors
- Surface mounting or flush mounting (with optional kit)
- Very simple and fast installation without cabling problems: terminals only on the back
- Integrated "spirit level" for easy installation
- 2x16 blue LCD display
- Adjustable display contrast
- 4 system status LEDs



Some products are not available in all countries. Contact your local distributor for details.



## PREMIUM | Keypad Accessories

Model	Description
BKP-BOX	Flush-mounting kit: flush-mounted box, mortar-proof cover, cap with Bentel logo, flush-mounted back
BKP-FMB	Flush-mounted box, mortar-proof cover, cap with Bentel logo
BKP-FBK	Flush-mounted back



## CLASSIKA Series Keypads

- Great value
- Large and easy to use keys
- Very simple and fast installation without cabling problems: terminals only on the back

### CLASSIKA LCD Keypad

- 2x16 blue LCD display
- Adjustable display contrast
- 3 system status LEDs

### CLASSIKA LED Keypad

- 16 zone LEDs to display all 3 zone states
- 8 system status LEDs

## Proximity Readers



### PROXI

- Proximity key/card/tag reader for indoor/outdoor use (IP34)



### MINIPROXI

- Proximity tag 50x30 mm



### PROXI-CARD

- Proximity card



### SAT2

- Proximity key



### PROXI TAG

- Proximity tag 60x30 mm
- Available in White, Gray and Black



### ECLIPSE 2

- Proximity key reader for indoor use
- Possibility to use in combination with SAT, Miniproxi and Proxi-card
- Universal reader module
- Availability of 19 different covers to be adapted to the most used finishing styles

Some products are not available in all countries. Contact your local distributor for details.



# Wireless Systems

## Wireless Receivers

Choose between Bentel's 433 MHz or 868 MHz families of wireless devices. The 433 MHz family of devices offer proven range and reliability. The 868 MHz family of devices are perfect for installations where the 433 MHz frequency band is prone to interference.

### VECTOR VRX32-433EN 32-Zone Wireless Receiver

- EN50131 Approved Grade 2
- Available in 433 MHz
- Supports up to 32 wireless detectors
- Supports up to 16 wireless key-fobs
- Easy installation
- Compatible only with ABSOLUTA control panels



### VECTOR VRX32-433 | VRX32-868 32-Zone Wireless Receiver

- Available in 433 MHz and 868 MHz
- Supports up to 8 wireless detectors
- Supports up to 8 wireless keyfobs
- Easy installation
- Compatible with the following control panels: KY08W, KY08GW, KY032, KY032G, KY0320 and ABSOLUTA
- Can be used in conjunction with Vector/Quad module (only KY0320) for increased wireless range



### VECTOR/RX8 8-Zone Wireless Receiver

- Available in 433 MHz
- Supports up to 8 wireless detectors
- Supports up to 8 wireless keyfobs
- Easy installation
- Compatible with the following control panels: KY08W, KY08GW, KY032, KY032G, KY0320
- Can be used in conjunction with Vector/Quad module (only KY0320) for increased wireless range



Some products are not available in all countries. Contact your local distributor for details.



### BGSM-G GSM/GPRS Universal Wireless Communicator

- Can be used as a primary, backup or standalone communicator
- Compatible with most control panels
- Intelligently monitors phone line and switches automatically to GSM network
- 4 configurable inputs
- 4 programmable open-collector outputs
- Send SMS and Contact ID "Trouble" and "Periodic" reports
- System can be programmed via mobile phone or software application
- SMS dialer – up to 8 telephone numbers
- Contact ID communicator – up to 4 telephone numbers
- Reliable, fast digital communications via GPRS (compatible with Sur-Gard System II and System III receivers)
- Remote activation of outputs through caller recognition (zero charges) or by sending an SMS
- Remote control feedback (SMS message or ring)

### BGSM-120 GSM/GPRS Universal Communicator

The BGSM-120 offers Voice Dialer functionality in addition to the long list of standard Bentel communicator features. Small enough to fit inside the panel cabinet and no extra battery required.



- GSM Quad-Band
- Can be used as a primary, backup or standalone communicator
- Can be installed inside panel cabinet (no extra battery required)
- Compatible with most control panels
- PTM\* feature Intelligently monitors phone line and switches automatically to GSM network
- Able to detect VOIP service problems quickly (PTM\*)
- 3 programmable I/O terminals
- Telephone voice dialer: 8 voice messages of up to 16 sec. each
- SMS dialer: 11 SMS messages of 100 characters
- 8 telephone numbers for the Telephone and SMS dialers
- Reliable, fast Contact ID communications via GPRS (compatible with Sur-Gard System II and System III receivers)
- Credit balance check for pre-paid SIM CARDS
- Programmable "whitelist" of enabled callers – up to 100 telephone numbers
- Remote activation of outputs through caller recognition (zero charges) or by sending an SMS
- Remote control feedback (SMS message or ring)
- Flexible PC configuration software

\* PTM is a proprietary technology

### Antenna Units

- BGSM-120KEA: P.C.B., antenna with 2 m cable, metal bracket and supports
- BGSM-120KCA: P.C.B., antenna with 25 cm cable and supports
- BGSM120-BA: P.C.B., antenna with 25 cm cable and container

Some products are not available in all countries. Contact your local distributor for details.

Remote programming by  
[www.bentelreachme.com](http://www.bentelreachme.com)  
 No communication cost

## Signalling Devices



### CALL Self-Powered External Sirens with Flasher

- Strong polycarbonate box with tropicalized metal innerplate: resistant to all weather conditions (protection class IP34)
- Modulated frequency sound emission with the possibility to assign different sounds to the alarm input
- Test circuit for battery level and efficiency with flasher cut out activated by low battery conditions
- Protected against tamper, snatch, flasher damage and wire cutting and with foam injection tamper device (select models only)
- 3 different inputs for alarm signaling on siren sounder, flasher or both (select models only)
- Available with anti-foam option
- Colours: white, dark silver and light silver

*Complies with CEI 79-2/2nd Ed. 1993 performance Grade II*



### LADY Self-Powered External Sirens with Flasher

- Strong polycarbonate box with tropicalized metal innerplate: resistant to all weather conditions (protection class IP34)
- Modulated frequency sound emission with the possibility to assign different sounds to the alarm input
- Test circuit for battery level and efficiency with flasher cut out activated by low battery conditions
- Protected against tamper, snatch, flasher damage and wire cutting and with foam injection tamper device (select models only)
- 3 different inputs for alarm signaling on siren sounder, flasher or both (select models only)

*Complies with CEI 79-2/2nd Ed. 1993 performance Grade II*



### WAVE High Performance Internal Siren

- Operating voltage 12 Vdc
- Sound output volume 104 dBA  $\pm$ 3 dB @ 1 m
- Protection class IP31
- Available with or without flasher

Some products are not available in all countries. Contact your local distributor for details.



## Detectors

### BMD501 Digital PIR Detector with Pet Immunity

Whether it's a residential or commercial installation, the BMD500 Series combines performance with competitive pricing to offer the perfect solution.

- Digital signal analysis
- Pet immunity up to 25 kg (55 lb)
- Exceptional white light immunity
- Quad Linear Imaging Technology for sharp analysis of body dimensions and differentiation from backgrounds and pets
- Compact design for residential installations
- Adjustable variable pulse count
- PIR sensitivity adjustment
- Height installation calibration free
- Dimensions (WxHxD): 118x62.5x41 mm
- Power input: 8.2 to 16 Vdc
- Current draw (Standby): 18 mA
- Current draw (Active): 25.5 mA
- RFI protection: 30 V/m 10-1000 MHz
- EMI protection: 50,000 V



### BMD503/BMD504 Dual-Tech (PIR + Microwave) Motion Detectors with Anti-Masking and Pet-Immunity

The BMD503 is a dual technology motion detector that combines passive infrared and microwave detection with anti-masking features. The BMD504 dual-technology motion detector without antimasking offers reliable prevention of false alarms at an economical price.

- Anti-masking (BMD503 only) and anti-tamper
- Slim profile design
- Pet immunity up to 25 kg (55 lb)
- Exceptional white light immunity
- Quad Linear Imaging Technology for sharp analysis of body dimensions and differentiation from backgrounds and pets
- Height installation calibration free
- 2-way PIR/microwave sensitivity adjustment
- User-friendly installation with or without swivel-mount bracket (bracket sold separately)
- Dimensions (WxHxD): 118x62.5x41 mm
- Power input: 8.2 to 16 Vdc
- Current draw (Standby): 18 mA
- Current draw (Active): 25.5 mA
- RFI protection: 30 V/m 10-1000 MHz
- EMI protection: 50,000 V



Some products are not available in all countries. Contact your local distributor for details.

### BMD-707 Wired Outdoor 8 PIR Detector

The BMD-707 features the true revolutionary TMR™ True Motion Recognition Technology using 8 PIR sensors. Each sensor acts as a Quad detector to accurately determine real threats while being able to prevent false alarms caused by outdoor interference, such as rain, snow and animals.



- Advanced Obsidian Black Mirror™ optics technology (patent pending) distinguishes a moving person from swaying trees or small animals ensuring effective detection of human movement while minimizing false alarms
- High protection against snow, rain, dust, wind and direct sunlight
- Tamper protection against opening and removal from wall
- Alarm LED is visible in sunlight
- Low voltage detection
- Self-test
- Robust housing with recessed window
- Smart anti-masking can distinguish between masking spray and rain
- Immunity to pets weighing up to 18 kg (39.7 lb)
- Built-in swivel bracket

### IR360 360° PIR Detector

Designed for applications which require high sensitivity and cover, such as rooms with large amounts of view restricting furniture.



- Ceiling mount for environments with a restricted field of vision
- Temperature compensation for improved performance at critical temperatures
- Sensitivity adjustment to configure the detector for normal or hostile environments
- Excellent RF immunity
- Exceptional white light immunity
- Operating voltage 9.5 ÷ 14 Vdc
- Standby current: 15 mA
- Case protection grading: IP50
- Dimensions (WxHxD): 115x115x25 mm



### RILED Remote LED Indicator

- Supplementary visual signalling for fire and intrusion installation
- Current: max 30 mA
- Dimensions (WxHxD): 83x83x26 mm
- Multi-voltage for intrusion: 12V



### GB08 Glass Break Detector

Designed to detect the sounds produced by the shattering of framed glass.

- High-performance microphone
- Sensitivity adjustment
- Digital signal analysis provides exceptional false alarm immunity
- Excellent RF immunity
- Accurate detection of framed plate, laminated, wired and tempered glass types
- Operating voltage 9.5 ÷ 14 Vdc
- Standby current: 15 mA
- Case protection grading: IP50
- Dimensions (WxHxD): 89x64x20 mm



### RAY Outdoor Barrier for Long-Range Protection of Property Perimeters

- Active infrared double-ray photoelectric sensor
- Signal LED for system's status
- Excellent RF immunity
- Alarm output
- Tamper output
- Supply voltage: 10 ÷ 18 Vdc
- Current: < 43 mA
- Case protection grading: IP54

Some products are not available in all countries. Contact your local distributor for details.

## Management Software



### BOSS Bentel Operating Security Software

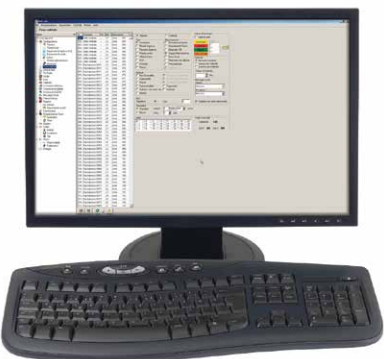
BOSS is an advanced software platform for local and remote management of Bentel Security systems. System programming, site monitoring and firmware management are made easy with BOSS through a powerful and intuitive user interface. Improve efficiency and do it all at once with the many features of BOSS that allow true multi-tasking.

The BOSS platform brings an extensive list of features and capabilities:

- Unlimited number of accounts
- Supports the ABSOLUTA control panel platform
- Backed by SQL database for stability, security and reliability of account data
- Extensive search capabilities
- Tabs: open many accounts at once just like your favorite internet browser
- Single option tagging to minimize the amount of data transfer
- Multi-tasking: continue to work on other accounts while communications are in progress
- Complete management of voice files
- Continuous "Real-Time" status mode
- Built-in firmware upgrade tool
- Flexible account management
- Queued communication jobs
- Extensive tracking and control of communications jobs
- Managed updates and installation

BOSS will require the following applications to be installed:

1. .NET Framework 4.0
2. SQL Lite



### BSS Bentel Security Suite

The Bentel Security Suite is an integrated environment that has been developed to meet the needs of local and remote management of Bentel Security systems. It will allow you to program, control and enhance the performance of any all KYO Platform, BGSM Communicator, and all the old Bentel Security Products equipped with a local or remote computer interface. The customer database and print facilities will keep you in touch and informed. It is surely the best way to achieve the maximum from your Bentel Security installation.

*All Bentel software are available for free download at [www.bentelsecurity.com](http://www.bentelsecurity.com)*

Some products are not available in all countries. Contact your local distributor for details.



For more information on the products featured here or on any other Bentel Security product please call **+39 0861 839060**

E-mail us at **infobentelsecurity@tycoint.com** or contact your Authorized Distributor.

Please visit us at **www.bentelsecurity.com**

© 2014 Tyco Security Products 08/14