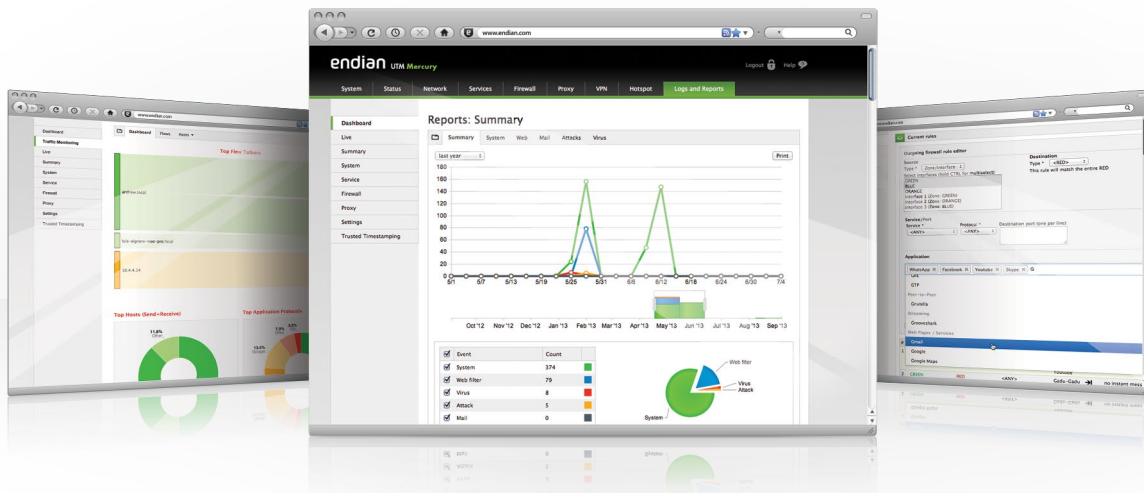


ENDIAN UTM 3.0

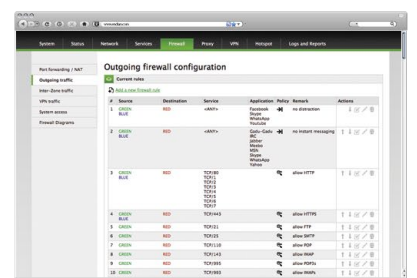
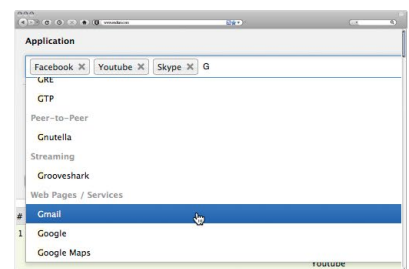
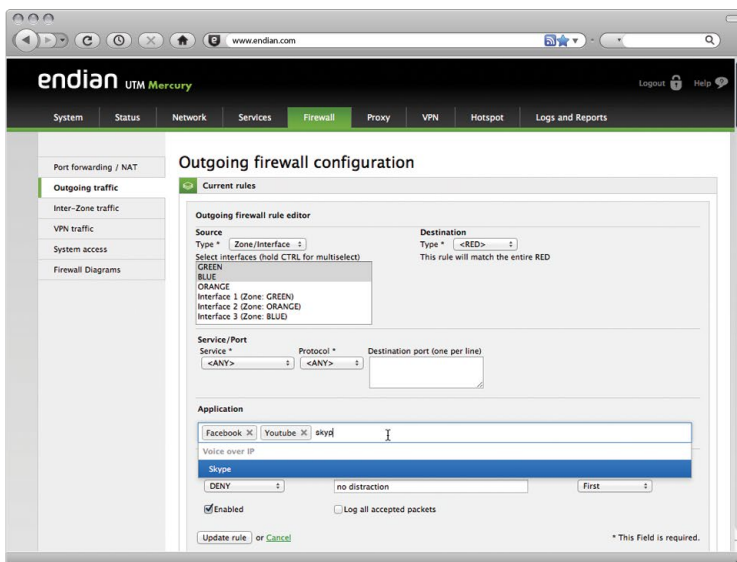


Endian UTM 3.0 - New Features Description

Firewall

- **Application Control**

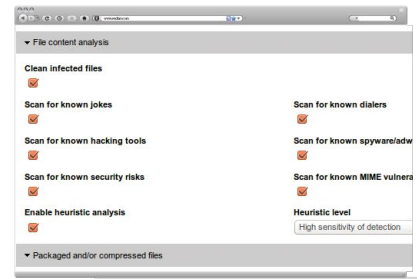
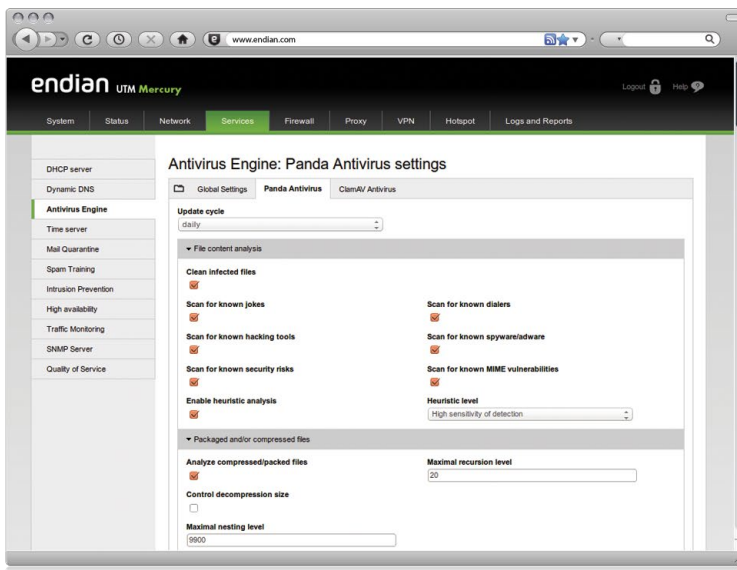
The outgoing firewall has been extended with the functionality to **recognize and block applications**. This is done by using ntop's **nDPI** library which recognizes **more than 160 applications**, among them **Skype, Facebook, Spotify and Dropbox**



Anti-Virus

- **Panda Anti-Virus**

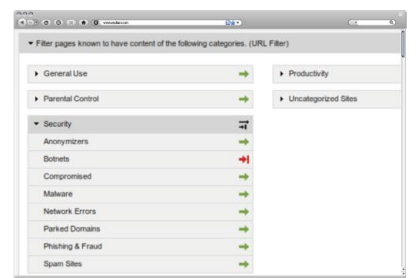
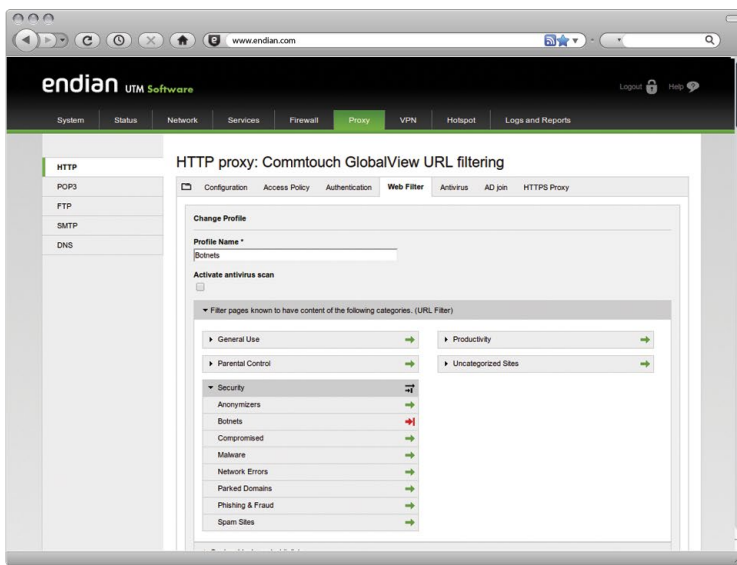
Panda Anti-Virus engine has been implemented and is available for **HTTP, SMTP, FTP and POP3 proxies**



HTTP Proxy

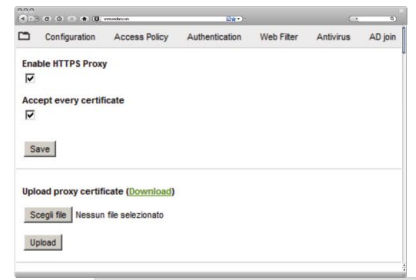
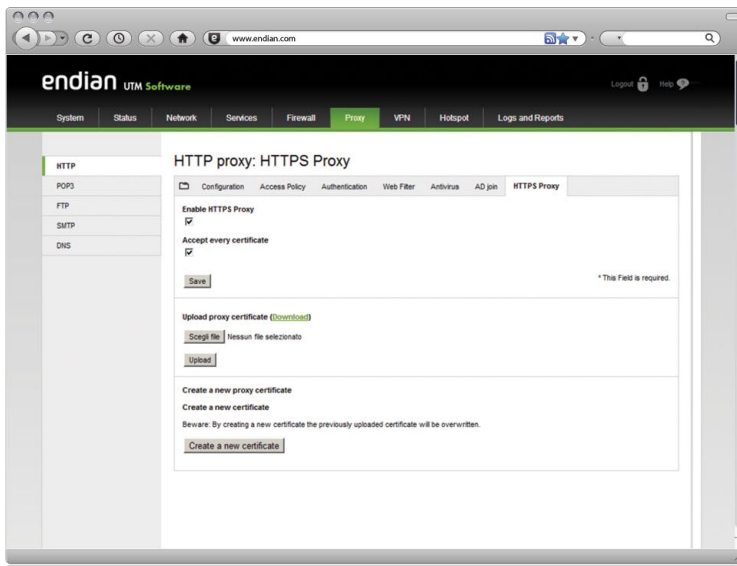
- **Commtouch URL Filtering**

Commtouch's URL filtering service has been implemented. Now over **100 million pages** are recognized and categorized



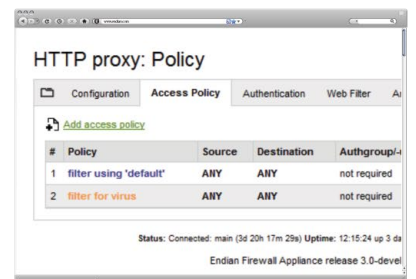
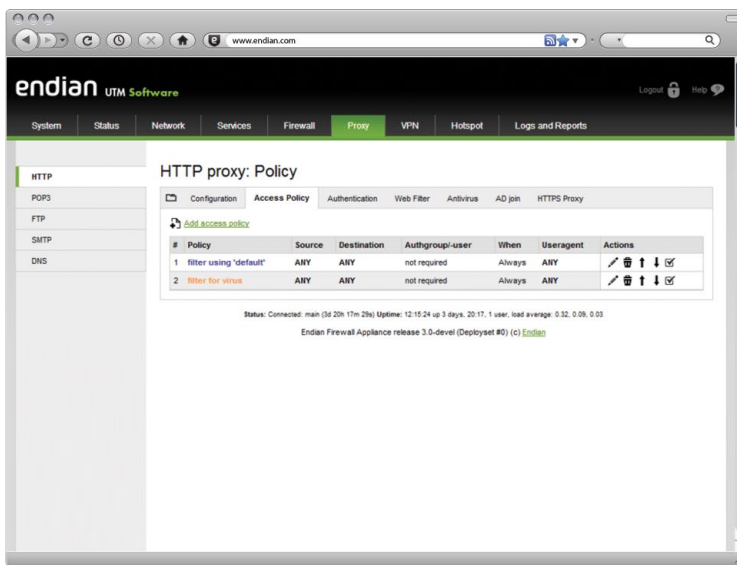
- **HTTPS Filtering**

Now you can fully **inspect and block web traffic (HTTP/HTTPS)** using seamless **SSL** inspection technology



- **Enhanced Performance**

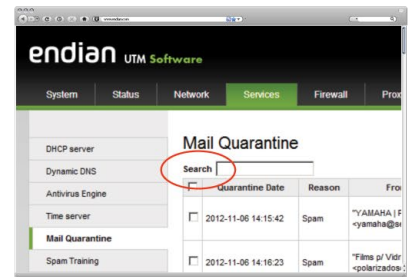
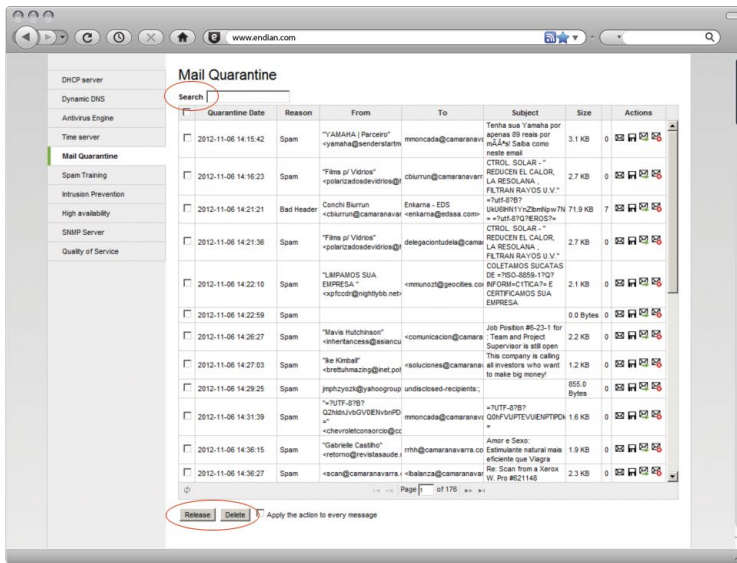
By rewriting the entire HTTP proxy backend a substantial **performance improvement** has been achieved. This has been possible thanks to an **ICAPbased solution** which allows simultaneous antivirus and URL checks without having to use additional tools



SMTP Proxy

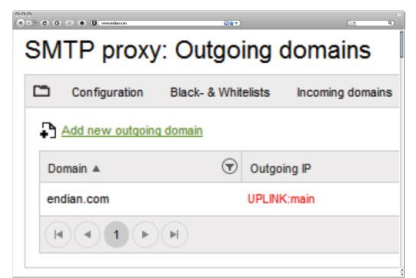
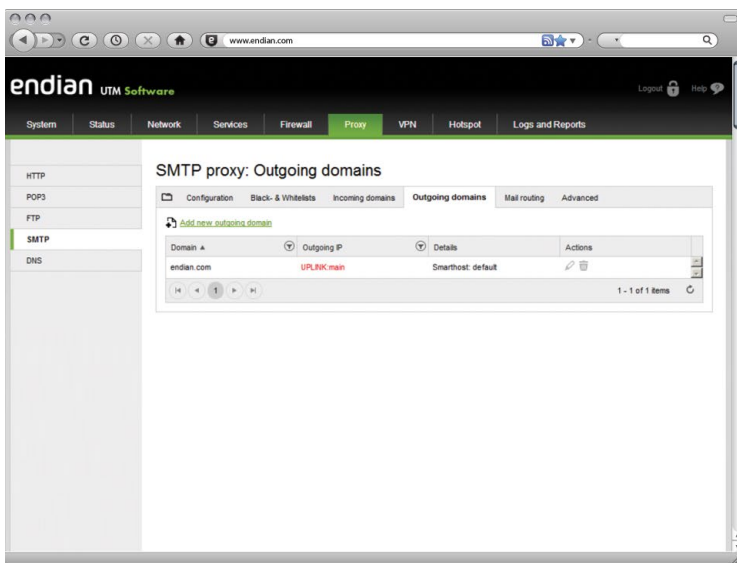
- **E-Mail Quarantine**

A completely manageable **E-Mail Quarantine** has been added which makes it possible to **search** for E-Mails, view their content, **delete** them from the quarantine or to **release** them



- **Domain Management**

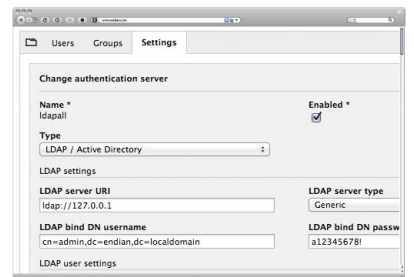
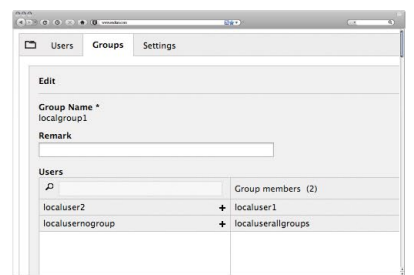
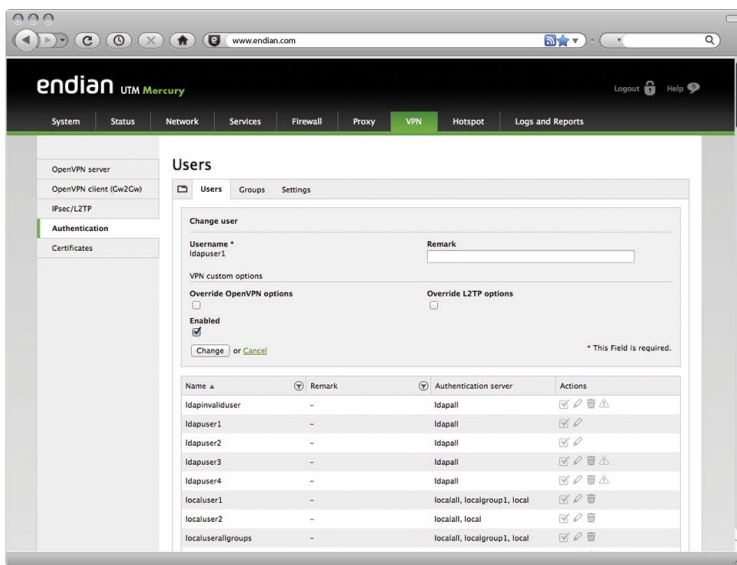
For every domain a smarthost and the outgoing IP address can be defined. This makes it possible to **send E-Mails through different mail servers** based on the domain. Additionally different IP addresses can be used when **sending E-Mails based on their domain**



Virtual Private Network

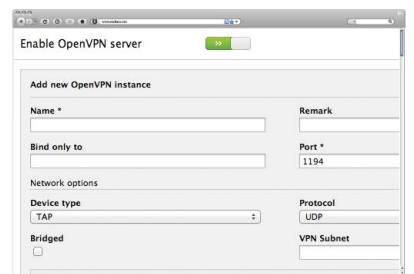
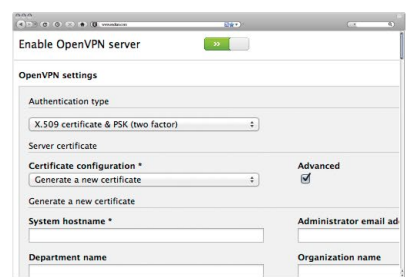
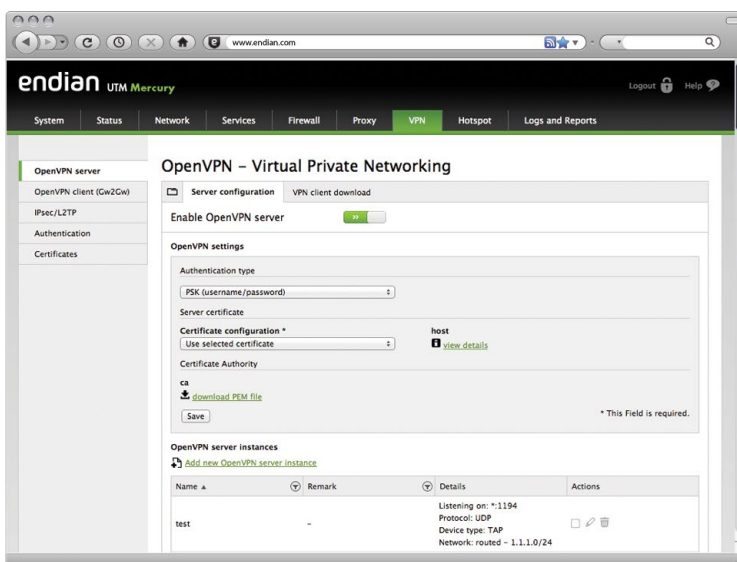
- **Rewritten User Interface**

In order to simplify certain tasks and allow the implementation of new features the entire VPN graphical user interface has been rewritten. This includes the **OpenVPN server and client GUIs, IPsec, VPN user management and a new certificate management GUI**



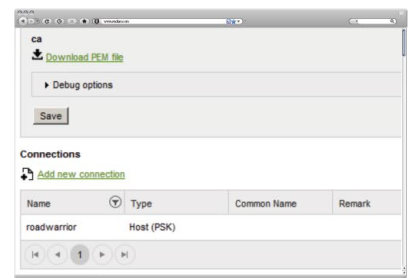
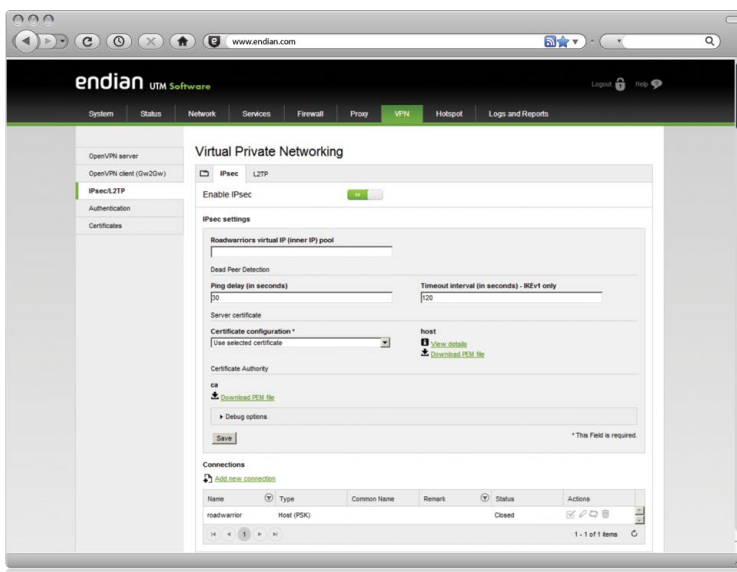
- **OpenVPN**

- The OpenVPN server backend has been completely rewritten and is now capable of starting **multiple OpenVPN processes**, thus substantially **increasing the throughput**
- During the rewrite of the backend support for running the OpenVPN server in **TUN mode** has been added. This allows modern mobile devices - most of all **Android** and **iOS** devices - to connect to the server



• IPsec

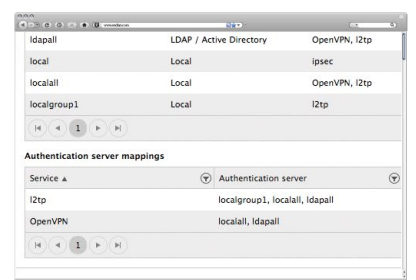
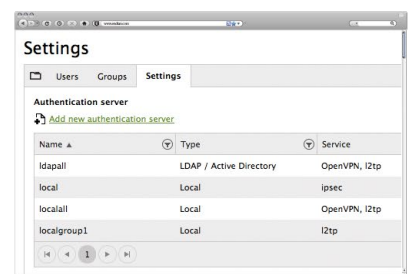
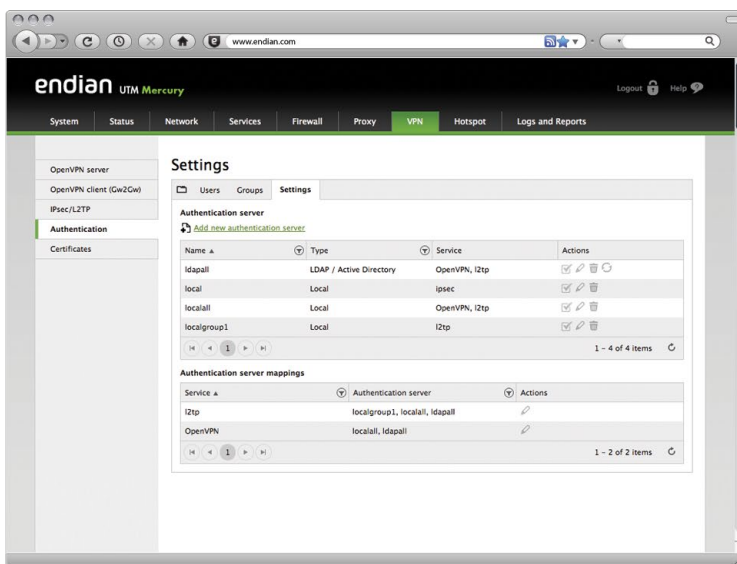
- Support for **Xauth user authentication** has been added to the IPsec tunnel configuration
- By upgrading to StrongSWAN 5.1 not only IKEv1 but also **IKEv2 are integrated** in the IPsec module
- Additionally to the previously supported ciphers many new ones have been added. These include **Blowfish, Twofish, Serpent and Camellia** block ciphers as well as **SHA2 and AES-XCBC** hash algorithms



VPN User Management and Authentication

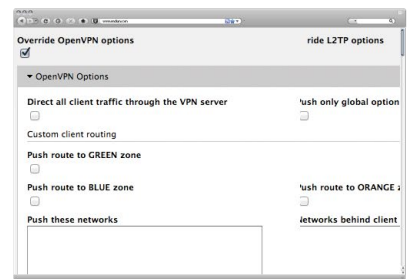
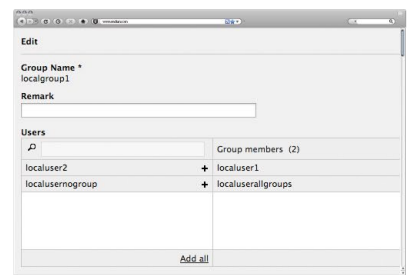
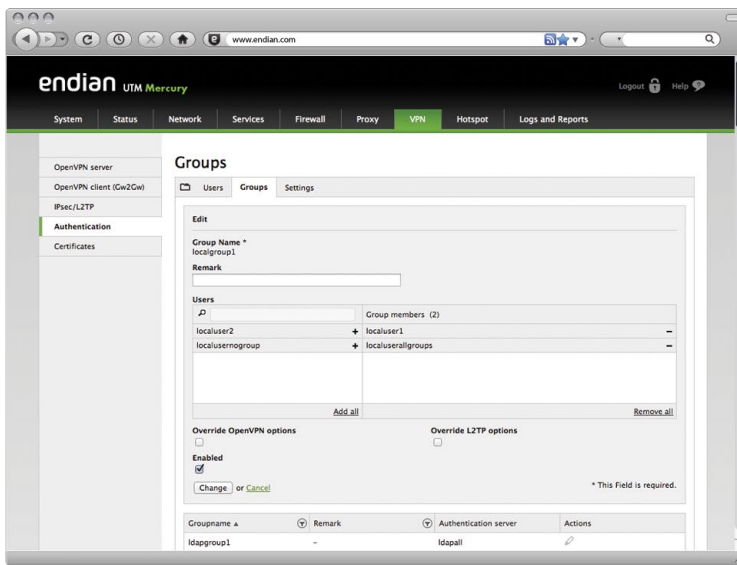
• Multiple Authentication Servers

Additionally to the local user database **support for external authentication servers** has been added. This includes **Active Directory, Novell eDirectory** as well as any other **LDAP implementation**. VPN services can use any combination of the configured servers to authenticate users



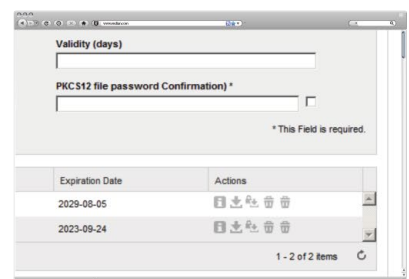
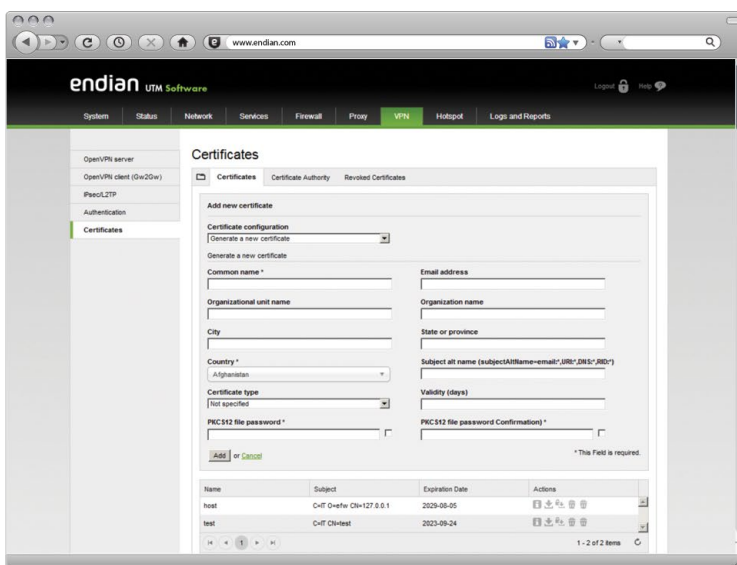
- **Group Management**

It is now possible to **synchronize user groups from external authentication servers** and organize local users into groups. These groups can be used to define **custom VPN parameters** and to configure who should be able to use which VPN services



- **Certificate Management**

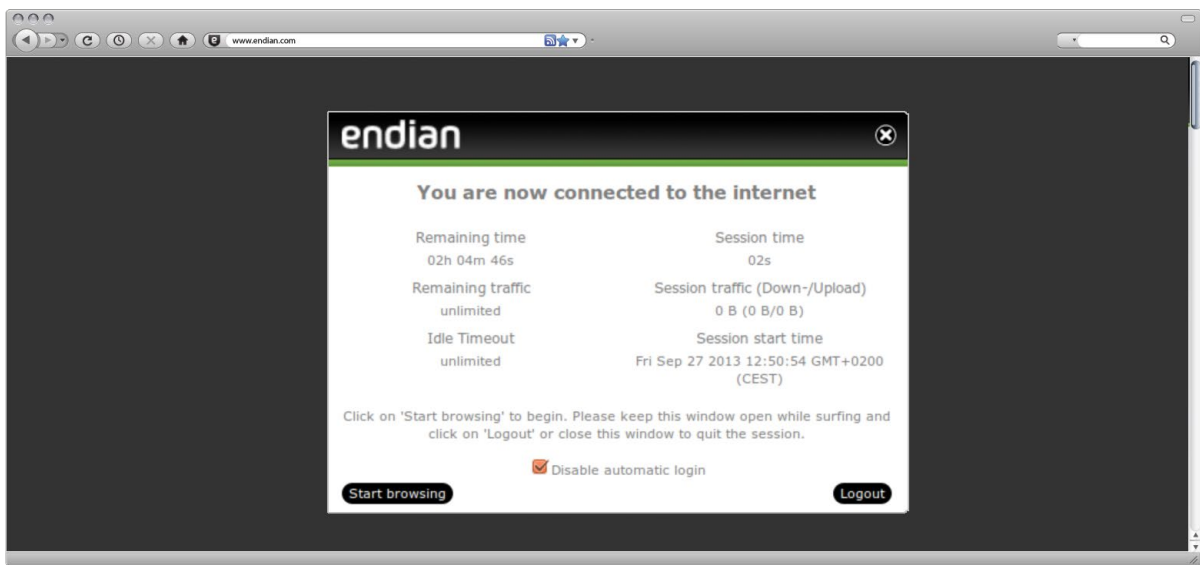
A brand new certificate management user interface has been added. This includes a **full-featured local certificate authority** including a **certificate revocation list** as well as the possibility to create certificate signing requests for **external authorities**



Hotspot

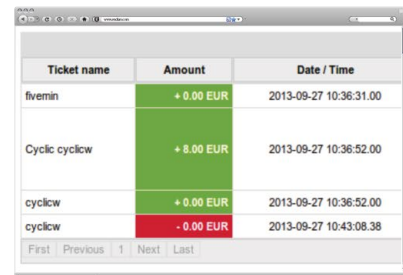
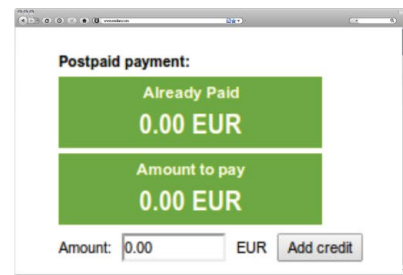
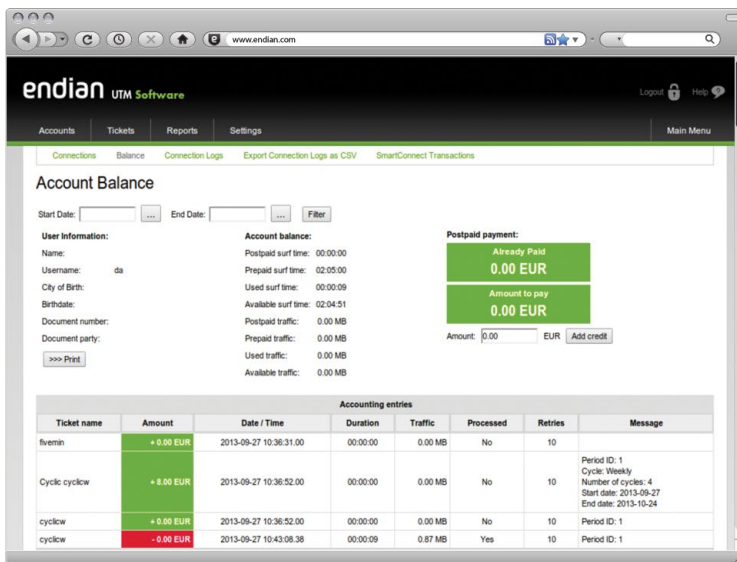
- **SmartLogin**

The new configurable **SmartLogin** functionality allows users to **re-login** to the hotspot **without** having to **re-enter** their **credentials**, a feature that is especially helpful for mobile user. This is done by reading the user data from the browser's session cookie



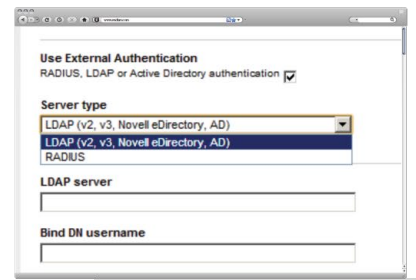
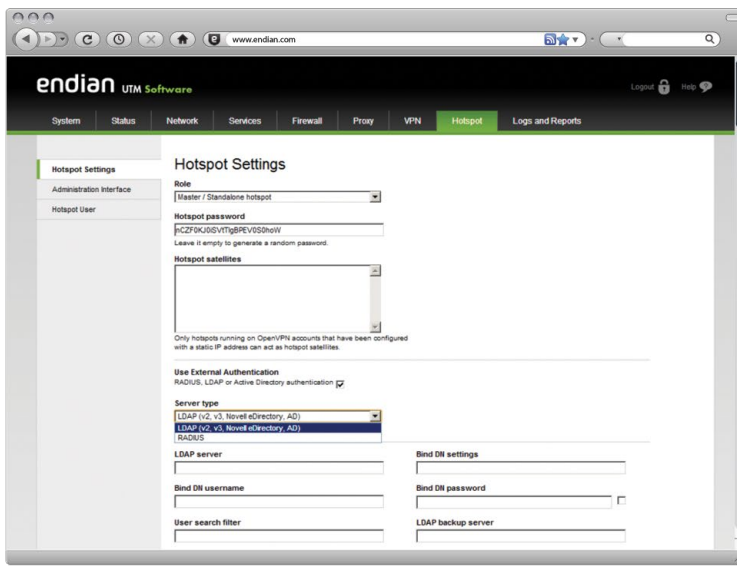
- **Cyclic Tickets**

Cyclic Tickets are conceived to allow Web surfing in accordance with **recurrence criteria**. That means that the operator will be able to assign tickets based on time or data flow with **daily, weekly, monthly or yearly validity**. Just to make an example, it will be possible to provide one hour Internet connection a day, for a predefined number of days



- **Configurable Authentication Server**

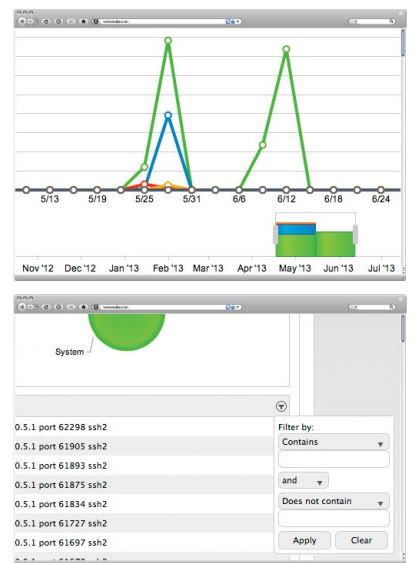
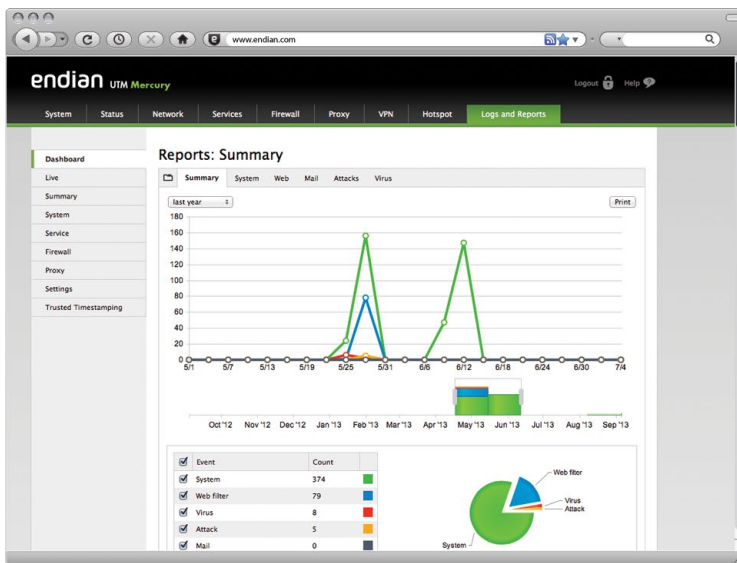
It is now possible to use **external authentication servers** while the accounting is still handled by Endian Hotspot. The following types of external authentication servers are supported: **LDAP, Active Directory, Novell, eDirectory, RADIUS**



Reporting and Monitoring

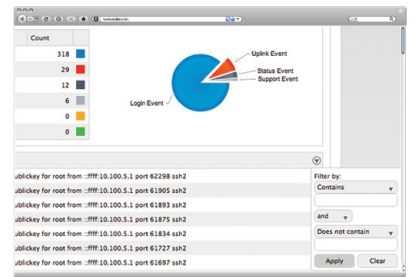
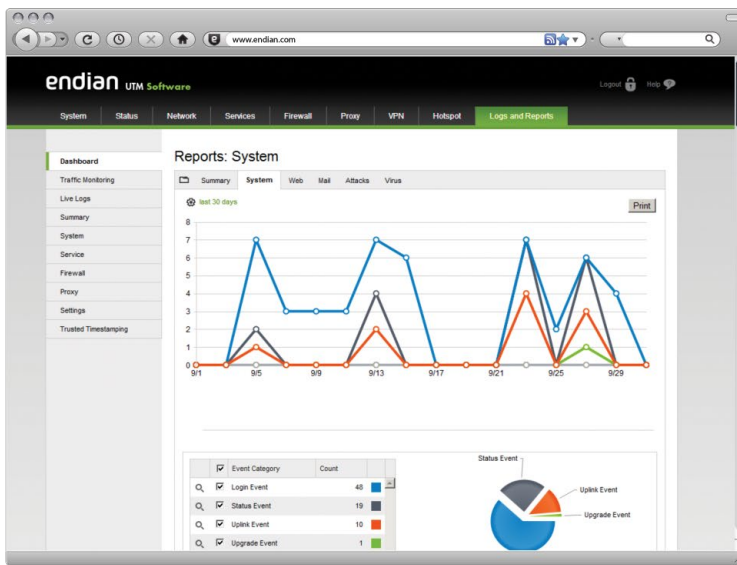
- **Reporting Dashboard**

A brand new reporting dashboard shows a timeline and summary of the **most important event categories** that happened during the chosen period. **A powerful filtering tool can be used to show only the desired events**



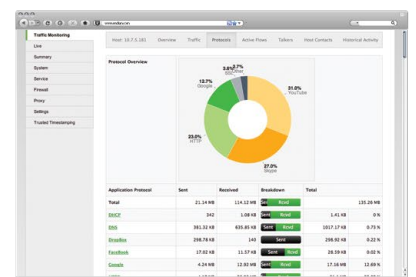
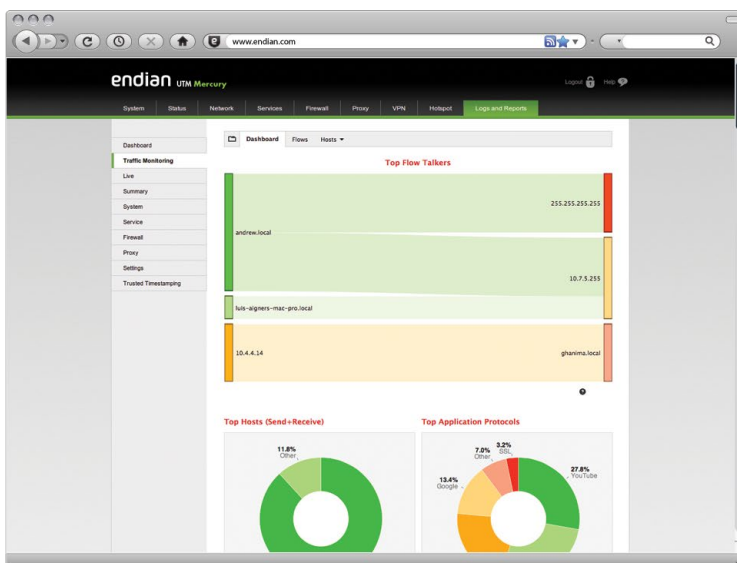
- **Detailed Reports**

Detailed reports for the most used functionalities have been added. This includes reporting modules for system, web, e-mail, attacks and viruses. Just like in the reporting dashboard it is **possible to use a powerful filtering tool to show only certain events**



- **Live Network Traffic Monitoring**

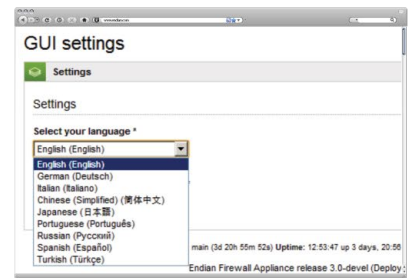
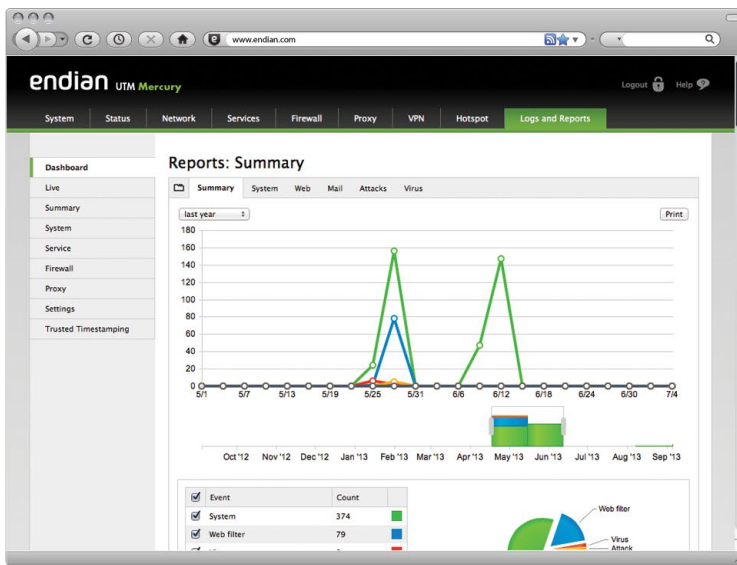
Thanks to the brand-new **ntopng traffic monitoring engine** it is now possible to see **connections and traffic in real-time**. Obviously it is also possible to have a look at historical data.



GUI

- **Redesigned GUI and New Translations**

- The entire **GUI** has been **redesigned** and appears in a new, polished look. Lots of minor adjustments have been made providing a better user experience
- The web-interface is now available in **English, Italian, German, Japanese, Spanish, Portuguese, Chinese, Russian and Turkish**



Endian International
 Tel: +39 0471 631 763
 E-mail: sales@endian.com

Endian US
 Tel:+1 832 775 8795
 E-mail: us@endian.com

Endian Italia
 Tel: +39 0471 631 763
 E-mail: italy@endian.com

Endian Japan
 Tel:+81 3 680 651 86
 E-mail: japan@endian.com

Endian Deutschland
 Tel: +49 (0) 8106 30750 - 13
 E-mail: germany@endian.com

Endian Turkey
 Mobile +90 216 222 2933
 E-mail: turkey@endian.com