

METROLINK **MATTERS** NEWS:EVENTS

DISCOVERING SOUTHERN CALIFORNIA ON METROLINK



INSIDE

2

WORD FROM THE CEO
NEW WAY TO CONNECT TO METRO RAIL
COMMUTER TAX SAVINGS

3

DISCOVERING SOUTHERN CALIFORNIA WITH METROLINK

4

SCORE: THE FUTURE OF REGIONAL RAIL

5

DAZZLING RCTC HOLIDAY EXPERIENCE
SAFETY: SEE SOMETHING, SAY SOMETHING

6

LUNAR NEW YEAR
SWALLOWS DAY
DISNEY'S ALADDIN
AUTO CLUB 400



WORD FROM THE CEO

ARTHUR T. LEAHY | CHIEF EXECUTIVE OFFICER | METROLINK

Dear Riders,

Metrolink is already on track for another successful year in 2018 and is poised to do more to help move you where you need to go. We launched new technology to allow you to use the Metrolink Mobile App to transfer to Metro Rail. This exciting new way to transfer between Metrolink and Metro Rail will help get you where you need to go faster and more conveniently.

Construction of the new Burbank Airport - North (AV Line), which is scheduled to open in the next few months, is moving along nicely. This station will create a new, daily train-to-plane connection on the Antelope Valley Line that will give riders more transportation options allowing them to leave their cars at home, saving money and time spent in traffic.

Metrolink continues to invest in operations by maintaining a state of good repair on all of our equipment and tracks to ensure a safe and efficient ride every time you use Metrolink. Additionally, the new Tier 4 locomotives will

reduce delays caused by mechanical issues with older locomotives. I know that reliable, on-time service is important to you, and it is important to us as well.

I'd also like to take this opportunity to apologize for any delays you may have experienced while using our service that may have resulted from mechanical issues, incidents or rail lines overcrowded by freight traffic, such as on the Inland Empire-Orange County Line. We are dedicated to finding solutions and have developed a new vision for more safe, frequent and reliable rail service in Southern California. The plan, Southern California Optimized Rail Expansion (SCORE), is featured in this edition of Metrolink Matters.

I thank you for your continued ridership and look forward to another great year.

NEW TECHNOLOGY ALLOWS METROLINK MOBILE TICKET HOLDERS TO TRANSFER TO METRO RAIL



Nearly a third of Metrolink riders transfer to Metro Rail and many riders use a mobile app on their smart phones to ride Metrolink.

Using the Metrolink Mobile App is simple: Users purchase their ticket then scan the digital ticket at Metro station gate scanners.

This upgrade to the Metrolink Mobile App cost \$1.5 million and was financed by federal, state and local funding.

Another upgrade coming soon will make the Mobile App available for Corporate Partner Program members. The timeline for this enhancement is being finalized.

Metrolink riders who purchase a mobile ticket through the Metrolink Mobile App can now transfer to Metro Rail lines by simply scanning their phone at locked Metro Rail gates. Until now, Metrolink riders needed to purchase a paper ticket by waiting in line at the ticket vending machines to transfer.

CORPORATE PARTNER PROGRAM MEANS TAX SAVINGS!



Employees at participating organizations are eligible to receive up to \$260 a month in tax-free commuting benefits from their employer when they take Metrolink to work with the Corporate Partner Program. Find out how your company can participate by visiting metrolinktrains.com/cpp.

ON THE COVER

MAKE METROLINK YOUR TICKET TO DISCOVERING SOUTHERN CALIFORNIA



With year-round sunny weather, Southern California is a top travel destination. Many times, local residents may forget the variety of great destinations and events available in the area. Metrolink can be your ticket to discovering these great destinations. On weekends, the \$10 Weekend Day Pass allows you to ride all day long and transfer to Metro Rail or buses at no charge. Monthly passes include weekend travel, as well. Discounts are available for groups, seniors, military and students on weekdays.



Southern California's beaches are always a great destination, and Metrolink offers service to many beautiful beaches, all included with your Metrolink ticket. For example, you can travel to San Clemente and Oceanside year-round, to Santa Monica with a connection from Metro's Expo Line, Huntington Beach using OCTA Route 29 or San Buena Ventura State Beach using Gold Coast Transit 6.

The region is more than just palm trees and great beaches; there are many historical and cultural activities scattered throughout the counties Metrolink travels through daily.

In Orange County, take a moment to learn about California's heritage at Mission San Juan Capistrano or step back to a simpler time in Old Towne Orange – just steps away from the Orange Station. Orange County is home to many lively areas like Downtown Fullerton and Downtown Santa Ana, where great bars, restaurants and shops offer new and exciting experiences.

Discover your inner artist in Riverside County, where the arts are celebrated

everywhere. From the historic Mission Inn to the statues of great leaders dotting the streets of Downtown Riverside and the UCR ARTS block, which showcases exhibitions, performances and screenings. Aviators-at-heart can learn about California's role in aviation history at the March Field Air Museum.

San Bernardino is home to one of the region's oldest railroad stations, the Santa Fe Depot – which will celebrate its 100th Anniversary on July 15, 2018. The Santa Fe Depot is also home to the San Bernardino History and Railroad Museum and is filled with railroad memorabilia and one-of-a-kind artifacts. Metrolink now travels one mile further into Downtown San Bernardino to the San Bernardino Transit Center, which is the gateway to Redlands other High Desert cities.

Los Angeles is full of museums, entertainment and festivals that highlight all the cultures that makes L.A. one of the most diverse places in the country. Only in L.A. can you explore the world on foot at Olvera Street, Little Tokyo and Chinatown, which are only a short walk from Union Station. You can discover the food of the world at the famed Grand Central Market. Even more, you can discover the uniqueness of L.A. from movie studios to Angels Flight, known as the shortest railway in the world at only 298 feet.

Southern California is yours to explore and there is no better way to take in the sights and learn about the region's heritage, wonders and splendor in 2018 than by using Metrolink.

SCORE: THE VISION FOR THE FUTURE OF REGIONAL RAIL



The Southern California region is one of the most desirable places to live, work and travel in the country. The population is expected to continue growing – some studies estimate four million more people will live in the region by 2035, a nearly 25 percent increase.

With some of the worst traffic in the nation and with current denizens, including our own riders asking for more service, the region has to prepare for even more cars on the roads by ensuring there are viable, safe public transportation alternatives. Enter Metrolink.

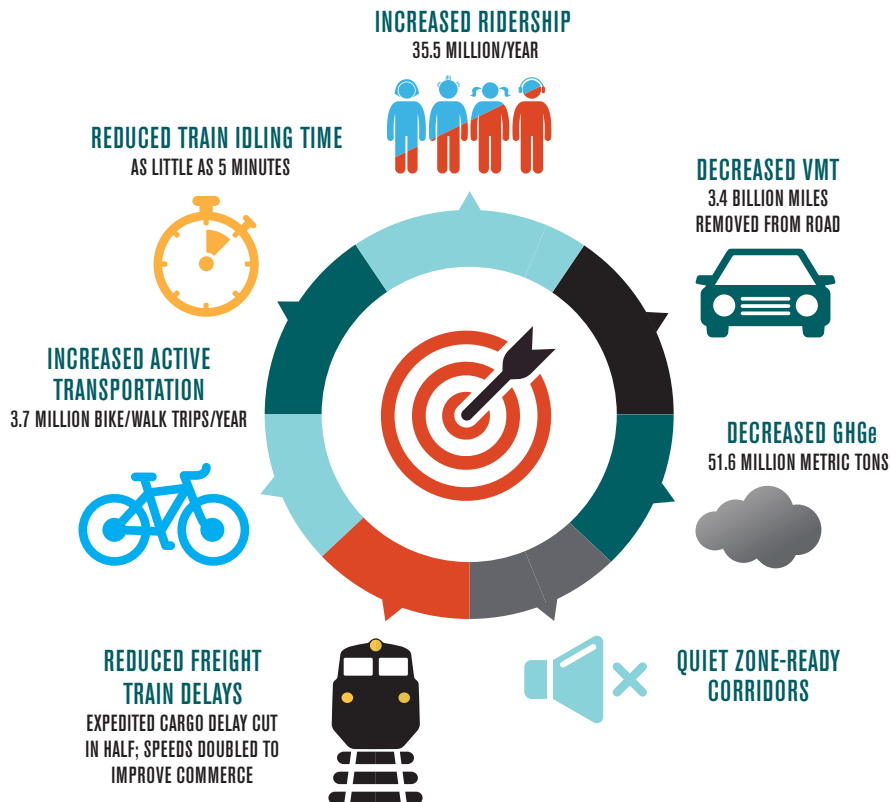
Metrolink is excited to share with riders the Southern California Optimized Rail Expansion (SCORE) program, which will upgrade the regional rail system to meet the current and future needs of the traveling public. By adding tracks, grade separations and upgrading signal systems across the entire Metrolink

system, trains will operate more frequently and reliably, making regional travel by train easier and creating an even more appealing alternative to driving. The crossings will also be upgraded so the majority of the system will be Quiet Zone-ready, enabling cities to apply for a designation so train horns aren't routinely blown.

Communities throughout Southern California will also benefit from a reduction in vehicle miles traveled which will reduce greenhouse gas emissions by 51.6 million metric tons.

This multi-year program will pursue funding from several grant programs this year. If funding is received, the projects could to be complete as soon as 2028, just in time for the Olympics. To get more information, visit metrolinktrains.com/score.

BENEFITS OF SCORE



RCTC CONNECTS METROLINK RIDERS WITH DAZZLING HOLIDAY EXPERIENCES

The Riverside County Transportation Commission (RCTC), one of Metrolink's member agencies, together with Metrolink helped brighten the holidays for thousands of passengers, thanks to special trains to the Mission Inn Hotel & Spa's Festival of Lights and the Tournament of Roses Parade.

With service on the 91/Perris Valley Line (91/PVL) and on the Inland Empire-Orange County Line, more than 11,000 Southern Californians visited the Festival of Lights in Riverside over four weekends this holiday season. The Riverside Transit Agency made travel even more convenient with free shuttles between the Riverside-Downtown Station to the downtown festivities. Funding was provided by Metrolink, RCTC, Riverside Transit Agency and a grant from the South Coast Air Quality Management District.



Travelers also kicked the New Year off right by riding Metrolink on the 91/PVL from Riverside to view the City of Riverside's first parade float in 60 years at the 129th annual Rose Parade in Pasadena. The float, which featured the Mission Inn and its Festival of Lights, won the Golden State Trophy for most outstanding depiction of life in California. Funding for the special New Year's Day trains were provided by RCTC and Metrolink.

WE NEED YOUR HELP TO PROTECT OUR SYSTEM: SEE SOMETHING, SAY SOMETHING!

The safety and security of our family of Metrolink passengers and employees is our highest priority. If you see any unusual or unsafe activity onboard our trains, contact the conductor immediately. Metrolink conductors are trained and equipped to handle many emergency situations and our conductors communicate directly with Metrolink Operations Center to secure assistance from law enforcement officials and emergency response teams during an emergency.

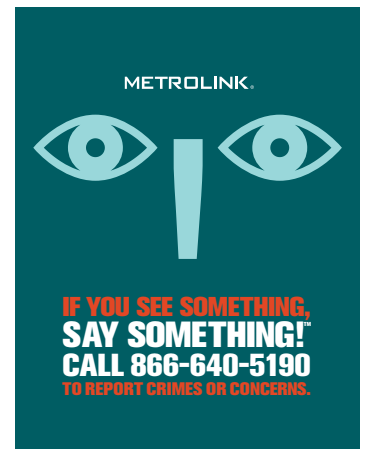
If you observe a person exhibiting the behavior listed below onboard the train, report it to your conductor. While at a station report it to security or law enforcement:

- Acting in a disorderly or disrespectful manner
- Acting in a way that is alarming and disturbing to others
- Abandoning a package and quickly exiting the area
- Pacing, acting nervous or jumpy

Passengers can act as a vital second set of eyes to ensure safety onboard train cars. To stay safe on trains, we encourage you to:

- Familiarize yourself with your surroundings, including stations and parking lots
- Maintain possession of your belongings at the stations and on the train
- Listen to onboard announcements and follow any direction from train crews

Report suspicious packages, activities, and/or persons by calling 911 or 866-640-5190. Remember, the safety of everyone is a team effort!



CELEBRATE THE LUNAR NEW YEAR AT CHINATOWN'S GOLDEN DRAGON FESTIVAL, FEBRUARY 17



Metrolink is proud to continue the New Year celebration with the annual Los Angeles Chinatown Lunar New Year Festival on February 17. Celebrate the Lunar New Year by participating in various cultural workshops and sampling the many gourmet food trucks. The Lunar New Year Festival is free and open to all ages. Before riding Metrolink to L.A., join OCTA at the Irvine Metrolink Station for a Lunar New Year kickoff celebration on February 17 from 8 a.m. to 9 a.m. The first 100 people to arrive will receive a free Metrolink Round-Trip ticket. Metrolink will have special trains to and from Downtown L.A. on the Orange County Line, for more info visit metrolinktrains.com/lunarnewyear.

RIDE METROLINK FOR FREE TO THE AUTO CLUB 400

If you're headed to Auto Club Speedway in Fontana for the Monster Energy NASCAR Cup Series Auto Club 400 on March 18, enjoy a stress-free ride on a special Metrolink train. A limited number of free Round-Trips with the purchase of a race ticket will be offered to fans thanks to Clean Transportation Funding from the South Coast Air Quality Management District's Mobile Source Air Pollution Reduction Review Committee.



The special train service will be offered from Oceanside, Oxnard and Lancaster making multiple stops to the Speedway station. The trains will arrive at the special Speedway Station before 10 a.m., leaving fans plenty of time to take part in festivities at Auto Club Speedway. Free tram service from the station to the ticket gates will be provided before and after the race. All three special trains will depart one hour after the checkered flag. For more details on schedules and Auto Club 400 tickets, please visit metrolinktrains.com/race.

SEE DISNEY'S ALADDIN AT THE HOLLYWOOD PANTAGES



Disney's Aladdin is now playing at the Hollywood Pantages through March 31!

From the producer of The Lion King comes the timeless story of Disney's ALADDIN, a thrilling new production filled with unforgettable beauty, magic, comedy and breathtaking spectacle. It's an extraordinary theatrical event where one lamp and three wishes make the possibilities infinite.

Hailed by USA Today as "Pure Genie-Us," ALADDIN features all your favorite songs from the film as well as new music written by Tony® and Academy Award® winner Alan Menken (Newsies) with lyrics penned by the legendary Howard Ashman (Beauty and the Beast), Tony Award winner Tim Rice (The Lion King, Aida), and book writer Chad Beguelin (The Wedding Singer).

Take Metrolink to L.A. Union Station and transfer for free to the Metro Red Line. Depart at the Hollywood/Vine stop. Check returning train times at metrolinktrains.com.

VISIT CAPISTRANO FOR THE SWALLOWS, MARCH 24



Celebrate the return of the swallows at the 60th Annual Swallows Day Parade and Mercado Street Faire. See the swallows return to Mission San Juan Capistrano from Argentina while enjoying the sights and sounds of California's cultural history. Visit metrolinktrains.com/swallows for more information.