

Serving our membership since 1975

<http://eastern-michigan.aspe.org>

Vol. 20, Issue 2

SEPT. MEETING AGENDA

DATE:

TUESDAY, OCTOBER 11, 2016

WHERE:

Plumbing Industry Training Center
SEE map on back page

4:30 PM - 5:30 PM - DESIGN CLASS

Storm Water Sizing and the 2012 Plumbing Code vs 2015 Plumbing Code

5:30 - 6:00 PM - DINNER

[Vendor Table Top Discussions]

6:00 - 8:00 PM - TECHNICAL SESSION

Roof Drains the Hole Story

Presenter:

Craig J. Froeter | Managing Member of Froet Industries LLC

REGISTRATION REQUIRED

<https://www.eventbrite.com/e/aspe-emc-october-2016-technical-program-tickets-27368023495>

SEE INSIDE COVER FOR TABLE OF CONTENTS

Cost: ASPE, ASSE, MBPA Mbrs: NC

Non-members: \$20.00 FOR CLASS

From Brianne N. Hall, P.E., CPD, LEED AP BD+C, GGP, President of ASPE EMC



Hello!

In addition to our monthly meeting on Oct. 11th, we are holding a full day steam seminar sponsored by Merlo Energy on October 12th from 8:00 a.m – 4:30 p.m. The seminar will include a steam board to demonstrate a working system with all the components. Please refer to the flyer included this newsletter with detailed information about the seminar. Limited seating will be available and it is recommended to register early.

The link for registration can be found here: <https://www.eventbrite.com/e/aspe-emc-steam-design-seminar-tickets-27431462242>

Our bi-annual ASPE Convention is being held in Phoenix, AZ from Thursday Oct. 27th – Wednesday Nov. 2. The expo and technical classes begin on Monday Oct. 31st, ending on Wednesday Nov. 2nd. If you would like any additional information about the convention, it can be found at this link: <http://events.ntpsnow.com/ASPE2016/Public/mainhall.aspx?ID=9270&sortMenu=101000>

Our chapter will be well represented in Phoenix and I'm looking forward to seeing everyone there!

The Michigan Chapter of ASSE will be hosting their annual banquet on Saturday, Feb 4th. The registration flyer and raffle tickets will be available soon. It is a great event, bringing together local and national members from multiple organizations and companies involved in the plumbing industry.

In addition to these events, Eastern Michigan is in the process of planning to host the Region 2 Presidents Meeting this year. This meeting is held in late May/early June each year, with the location rotating between all of the Region 2 chapters. This meeting is attended by the Presidents and Past Presidents of each chapter within Region 2, our Region 2 Director, Keith Bush, as well as representation from the national board. This meeting provides the opportunity for the National Board to discuss society business with us, it allows us to provide feedback to them, and also discussion between the chapters about the meetings they are holding with their membership.

If you have any comments or suggestions, please contact me at bnhall@fitch.com or (248) 324-4780.

Contents

Technical Program	2
Design Class	3
In The Know	4
VP Technical Report	4
ASPE EMC Steam Seminar	5
VP Legislative Report	6
VP Education Report	6
Affiliate Liaison Report	9
Board Member Article (PHartsell)	12
Photos & Attendees to Last Mtg . .	14-15
Line Card Sponsors	18 - 19

STEAM THEORY, DESIGN & PRACTICE SEMINAR

ASPE EMC presents this one day seminar which will be held October 12, 2016 on Steam Theory, Design & Practice. Check out the details (page 5).

GET YOUR REUS, CEHS, AND CEUs!

Don't forget that the design classes held monthly from 4:30 - 5:30 PM, can be counted towards your professionally required REUs, CEHS, and CEUs. these one-hour design classes will run from September - May.

ASPE 2016 CONVENTION & EXPO

The industry's largest tradeshow for plumbing engineers, designers, contractors and installers. Taking place in Phoenix, Arizona on October 28 - November 1. See page 11 for more information.

ASPE IS ACCEPTING APPLICATIONS FOR THE ALFRED STEELE SCHOLARSHIP

The Alfred Steele Scholarship has \$3,000 in available monies for qualified applicants. It is limited to ASPE members and their immediate families who have a GPA of 3.0 or higher, who are enrolled in or plan to enroll in an engineering program at a college, university, or technical school on a full-time basis. Contact Stacey Kidd for more information at (847) 296-0002, or email skidd@aspe.org

PLUMBING TRAINING CENTER ASSE BACKFLOW RE-CERTIFICATION

We'll be giving an ASSE Backflow Re-Certification class to any member who is eligible. If you're interested, please call the Training Center at (248) 585-1435 and get your name on the sign-up list for the next class training.

OCT. TECHNICAL PROGRAM

TOPIC: ROOF DRAINS THE HOLE STORY



Presenter: Craig Froeter, CPD
Froet Industries LLC, Manager/Member

In this session you will learn about the deficiencies in the industry, installation problems, green roof issues, flow issues and standard's issues.

Craig J Froeter has spent 25 years in the roofing contracting business dealing with all issues of waterproofing structures including storm drainage. He is in his 14th year as founder and president of Froet Industries LLC a manufacturer of roof drainage products. He is the inventor of the Froet Drain Bi-functional roof drain and holder of 3 additional US patents. He is on the working committee for the ASME A112.6.4 Standard and ASPE/IAPMO Z1034 Standard.

Upcoming November Program

4:30 PM *Tour of the Ann Arbor Water Treatment Plant*

6:00 PM Program Topic: *Sizing Water Treatment Filtration and Equipment at NSF International*

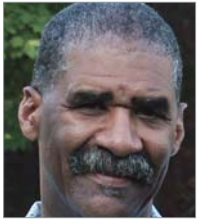
Speaker: Jim Stewart | Director of Commercial & Industrial Sales and Support, Culligan International

**NEW MEMBER
~ WELCOME ~**

BOB KIELESZEWSKI

OCT. DESIGN CLASS

TOPIC: STORM WATER SIZING AND THE 2012 PLUMBING CODE VS 2015 PLUMBING CODE



Presenter (on left): Paul Baker,
Interim Director of the
Plumber Training Center and past
Instructor



Presenter (below): Michael Melaragni,
Guardian Plumbing & Heating, and
past Director of the Plumbing Industry
Training Center

The Eastern Michigan Chapter of ASPE hosts a series of Plumbing Design Classes from 4:30 PM to 5:30 PM in addition to our technical program. This year's series is sure to provide details of interest to many plumbing professionals.

It is important to bring your MI Plumbing Code Book if you plan to attend.

Mr. Baker is currently Interim Director of the Plumbing Industry Training Center in Troy, MI. He has been an exceptional instructor at the Training Center for many years prior, providing great value to the Apprenticeship Program.

Mr. Melaragni has numerous years in the Plumbing Industry and has served as an outstanding Director of the Plumbing Industry Training Center for many years. Mike is currently utilizing his expertise at Guardian Plumbing and Heating in Livonia, MI.

***** TAKE NOTICE*****

**All Professional Engineers
and Certified Plumbing Designers**

The above design class held
monthly from 4:30 - 5:30 PM, with
instructor(s) Mike Melaragni and/or
Paul Baker can be counted towards
your professionally required REUs,
CEHs, and CEUs.

**These one-hour design classes
will run from September - May.**

review



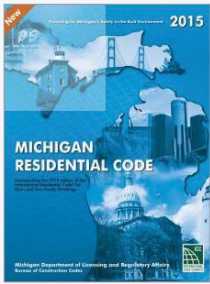
"Uniting the world plumbing industry and promoting its public health and environmental role"



Plumbing Engineer

NOW THE OFFICIAL PUBLICATION OF ASPE

IN THE KNOW



2015 MI RESIDENTIAL CODE BOOK

The 2015 Michigan Residential Code Book is in

Code Study & Development Group of SE MI is now taking pre-orders

Item 3100S15MI

Member price \$111.00 per copy + shipping

Non-Member \$139.00 per copy + shipping

Contact Dann Holmes at: (734) 214-6222 or dholmes@nsf.org

VP Technical Report

Theresa Allen, PE, CPD, LEED AP BD+C, GPD



Hello from your VP Tech!

We kicked off this year's program on September 13th with sessions related to hydronic systems. We had a decent turn-out of about 40 people, and as always the kabob dinner was delicious! Thank you, again, to our Tabletop sponsors: VE Sales and KL McCoy!

The design class, taught by Mike Melaragni, CPD and Paul Baker, focused on the fundamentals of pressure in hydronic systems. Starting with defining hydronics, we then learned the four different pressures found in a hydronic system: initial cold fill pressure, static pressure, operational pressure increased caused by expansion, and the pressure differential created by the operation of a centrifugal pump. The rule of thumb for minimum cold pressure at the top of a closed low temperature water system is 4 psig. The Bell and Gossett Design Manual is a good reference for other minimum pressures in different design scenarios. Most standard PRVs are factory set to 12 psi; this assumes we are feeding a radiator on the second story or a building, with 4 psi safety to facilitate air management. The relief valve is the last measure of defense in a hydronic system. Air management is easier when the circulating pump is downstream of the compression tank (point of no pressure change). Our March design class will talk more about air management in systems.

Our topic for the September technical session was Heat Exchangers, given by Norm Hall of R.L Deppmann. Norm did a fantastic job teaching us all the major differences between shell & tube and plate & frame heat exchangers – he even included audience participation! It is hard to sum up all the great points Norm covered, so I will try to touch upon the ones I found the most useful:

- Fouling factors: choose them carefully for your shell & tubes, a small difference in the factor can lead to a lot more surface area! Also, do not include a fouling factor for plate & frames.
- If you have a close approach/temperature cross – use a plate and frame.
- If you have high temperature and/or pressure, or if you need a low pressure drop – use a shell & tube.
- If your fluid is dirty – use a shell & tube. Use a single pass

when the fluid has particulate and the tubes will need to be cleaned often.

- Your log mean temperature difference (LMTD) is very important, as it will determine the size of your heat exchanger. The higher the LMTD, the less surface area needed for your heat exchanger.
- Plate & frames can be designed for future expansion, but be sure to tell this to your manufacturer so they can account for the current and future capacities in the plate designs.
- The higher the velocity through your heat exchanger, the less surface but the higher the pressure drop.

October will hold TWO events for ASPE EMC that you don't want to miss:

- Technical Meeting on the 11th on Storm Systems: <https://www.eventbrite.com/e/aspe-emc-october-2016-technical-program-tickets-27368023495>
- Steam Seminar on the 12th : <https://www.eventbrite.com/e/aspe-emc-steam-design-seminar-tickets-27431462242>

As a reminder, please remember to SIGN IN and SIGN OUT in order to receive your CEU certificate. Also, please fill out the program evaluation forms for each session, as this will help us better our programs!

See you on the 11th (and hopefully the 12th as well)!

Sincerely,

Theresa Allen, your VPT

Theresa.allen@ibigroup.com

Date: October 12, 2016

Time: 8:00 am – 4:30 pm

Location: Merlo Energy, 1987 Concept Dr., Warren, MI 48091

(Two blocks south of I-696, east of Dequindre Rd.)

Armstrong Steam University



Steam system board – Merlo Energy



Steam system board – Merlo Energy

This workshop will provide new and seasoned engineers, not only a Theoretical discussion on the mechanics of steam but a hands on approach and visible working steam system and all of the components. A session on system troubleshooting will be a part of the program.

Theory Seminar agenda:

- Fundamental of steam
 - Latent & Sensible Heat
 - Pressure / Temperature relationship
- Mechanical condensate return
 - Why return condensate?
- Water hammer
 - Thermal – Hydraulic - Differential

Design Seminar Agenda

- Steam trap operation
 - What are the three functions of all steam traps?
- Low Pressure trapping
 - Why do systems modulate pressure?

Practice seminar agenda

- Steam trap testing
 - How to test?
- Steam troubleshooting
 - Why steam traps fail?

This is just a sample of what will be covered in this comprehensive steam theory, design and practice seminar!

Registration and continental breakfast begins at 8:00am

Seminar starts at: 8:30am

Lunch: 11:45 – 12:30pm

Cost: \$40 for ASPE/ASSE members, \$50 for nonmembers

- Please register before **October 7th**, as seating will be limited

Click [here](#) to register.

Sponsored by: Merlo Energy –Smith Instruments, J.O. Galloup Company

VP Legislative Report

William Grayzar, CPD

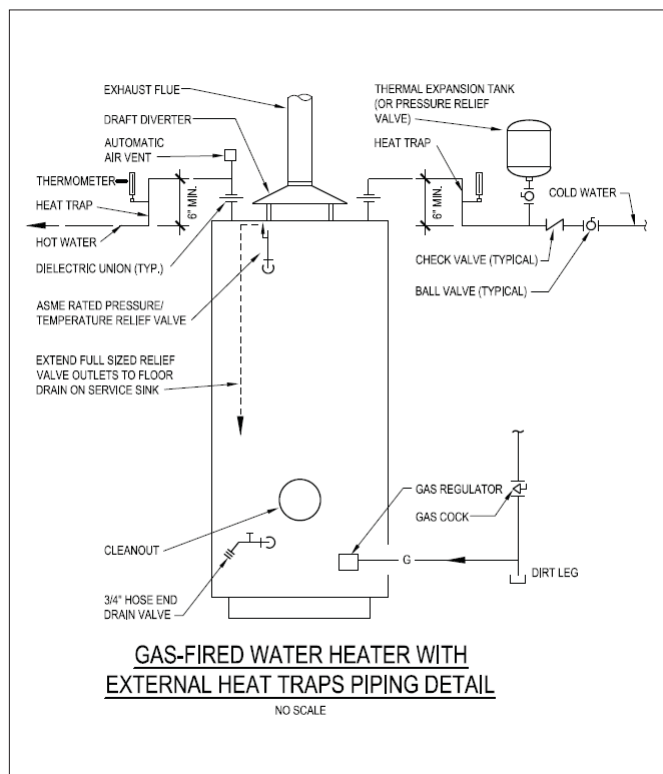


Did you know that in order to meet the ASHRAE 90.1 2007 (Energy Standard for Buildings Except Low-Rise Residential Buildings) that vertical pipe risers serving storage water heaters and storage tanks, which do not have an integral heat trap or a recirculation system, require external heat traps to be provided on both the inlet and outlet

piping?

Section 7.4.6 of ASHRAE Standard 90.1-2007 requires that “heat traps on both the inlet and outlet piping for storage water heaters and storage tanks. The heat traps are to be provided as close as practical to the water heater or storage tank. The heat trap is utilized to counteract the natural convection of heated water in a vertical pipe run.” Neither, the International Plumbing Code (IPC) or the Michigan Plumbing Code (MPC) addresses heat traps.

Below is an installation detail of storage type water heater with external heat traps:



Remember if the storage water heater or storage tank utilized has an integral heat trap or if your system has a recirculation system external heat traps in the piping system are not required.

Bill

VP Education

Mark Lamberson, CPD



About twenty years ago, I remember telling plumbers on the projects where I worked, “Someday, all of the foremen will have computers in their trailers and will produce sketches and drawings for the field to improve communication.” I witnessed this in action, at Henry Ford Wyandotte Hospital in 2006, as my foreman, the late Bob Ciesliga, drew up

sketches for each crew’s daily work assignment and handed them out every morning. I also remember the look I got from the other plumbers on the site. The “Yeah, right... dream on, pal” look that I had become so accustomed to.

Fast forward 20 years. I recently went to a jobsite because we were getting ready to install some underground utilities. The work area was in a parking lot with no reference to the future building that will be there about a year from now. But, the pipe needed to get in the ground so the driveway could be buttoned up for redirected traffic around the future site.

A few days prior, I drew the piping over a civil plan. This plan also had a few survey points from days of old on it, as well. So I added a few points to the file that are compatible with our robotic total station, and set out for the job site. I also had one of our layout operators meet me at the site. We located a couple of the survey points and lined up the “robot” with them. There were a couple of extra ones that we didn’t know about, too. So I popped open my laptop and added them to the file right there on the spot. Then we started spotting the centers of our fittings, the sides of the trench, and all the locations where the field joints would be located so the excavator could dig “bell holes” for the installers to make their connections. The layout operator was even able to add a “turning point” right on his tablet computer because the robot couldn’t see around the corner of an existing building. We were out of there by 1:00 and had all of the piping laid out, and the excavator was rolling over to the area to start working.

Once the trench is open, the layout operator will go back to the site with the pipefitters and lay out all of the center points again so they can drop the pipe in the ditch and weld it together. It will be within one eighth of an inch from where I drew it, so when we fabricate and install the rest of the piping, I will know exactly where to start.

After we completed that layout, I got in my car and headed for the office and had to laugh about those old statements regarding what the foreman would do in the future. When I see BIM, laser scanners, robotic total stations and drones flying around the job, I feel like I may have missed the mark by a little. ☺

PIPELINE

AMERICAN SOCIETY of PLUMBING ENGINEERS

THE ALFRED STEELE SCHOLARSHIP

Want some help getting your degree in engineering? Apply for the ALFRED STEELE SCHOLARSHIP. Up to \$3000 in scholarship monies may be awarded each year to qualified applicants.

THE DEADLINE IS JANUARY 31

The Alfred Steele Scholarship is limited to ASPE members and their immediate families who have a GPA of 3.0 or higher who are in or plan to attend a college, university, or technical school on a full-time basis (minimum 12 credit hours), enrolled in an engineering program.

This scholarship is named in honor of Alfred Steele, P.E., a long-time member of the American Society of Plumbing Engineers and a visionary and pioneer in advocating education and professional development for plumbing engineers and designers. SEE TABLE OF CONTENTS (PG 2) FOR MORE INFO.



32995 Industrial Road, Livonia, MI 48150
Phone 734.266.5300 Fax 734.266.5310
www.performanceengineering.com



High Efficiency Water Heaters
High Efficiency Heating Boilers
Custom System Solutions
Storage Tanks

Heating Boilers
Hot Water Supply
Pool/Spa Heaters
Storage Tanks
Complete Parts Stock



Snowmelt Systems
Radiant Floorheat Systems



Residential Water Heaters
Commercial Water Heaters
Storage Tanks
Complete Parts Stock

Natural Gas / Propane / Electric / Oil
3,000 to 4,000,000 BTU's

- ALSO -

Aldrich Boilers / Holby Valves / Valley Water Softeners



Web Site: www.kerrpump.com
E-Mail: chad@kerrpump.com
12880 Cloverdale, Oak Park, MI 48237
Ph.: (248) 543-3880 Fax: (248) 543-3236

Liquid Pumps
Vacuum Pumps
Heat Exchangers
Blowers
Related Equipment
and Accessories

Sales • Service • Repair



Pentair and Kerr Pump announce Merger

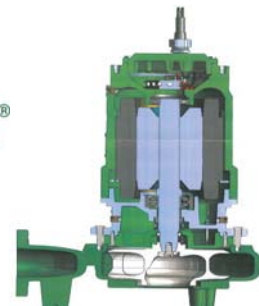
- Kerr Pump is proud to announce the addition of the Myers submersible pump line.
- This merger means that Hydromatic will focus on higher horsepower pumps while Myers will be focusing on the mid to low horse power systems.
- If a customer was once Hydromatic or Myers Installation. Kerr Pump will assist them in Identify and selecting between Hydromatic and Myers.
- Kerr Pump is the only company in the State of Michigan that has the ability to provide Hydromatic and Myers.



HYDRAMATIC



Myers



Michigan's Oldest Supplier of Pumps and Process Equipment - 1905

Affiliate Liaison Report

Dann Holmes, ASPE Region 2



As your Region 2 Affiliate Liaison for ASPE, I have so many topics to consider for articles. Unfortunately, there is so little time and newsletter space to cover all the topics I believe you would find interesting. This month I will focus on our upcoming Convention and Expo.

Pre-Convention

If you care to add the Green Plumbing Design (GPD) designation to your list of accomplishments, ASPE is holding a two-day workshop on October 27 & 28. To qualify, you must have a CPD or PE registration. There will be a 50-question exam following the workshop to test your knowledge. Good luck.

The Women of ASPE (WOA) Committee Meeting and Leadership Forum will take place on Friday, October 28. This event will bring the women of ASPE together and along with your plumbing peers, give you an opportunity to network, learn, and earn CEU's. This sounds like a great new event.

The Convention

Two of the most important events during the convention will be changes submitted to our by-laws and electing our incoming society board members.

Your chapter delegates tasked with casting votes up or down on amendments will affect the way Society operates. Words have meanings, be sure to review, and choose them carefully. You need to be involved with the changes proposed and make your suggestions known. Give your delegates a strong message to take to Phoenix and let them know you support the vote then intend to cast.

Although some Society Board members are running unopposed, there are a few positions that have multiple choices. Take the time to read all the nomination submittals. You are sure to learn valuable information about each nominee that you may not have known before.

The Expo

The Expo will begin right after our keynote speaker Steve Garvey enlightens our members. Expect nothing less than a compelling message that you can share with your family, friends, and colleagues when you return home.

ASPE will be hosting several guided tours during the expo. Be sure to consider these. I signed up for five.

How about Social media, do you know all there is to know? You can learn more about this technology by visiting the ASPE Social Media Lounge to get valuable tips. Be sure to download the ASPE app before getting to Phoenix. Search ASPE 2016 on either iTunes or Google Play. Make sure you click on the right one.

ASPE will host the New Product Innovation Theater in the ASPE Pavilion (booth 737). Manufacturers will give demonstrations and answer questions on their latest products and methods entering the plumbing industry. Learn more from AGF Manufacturing, Viega, Zoeller, Franklin/Little Giant, Holdrite Inc., Delany Products, Lubrizol, Leonard Valve, Willoughby Industries, Slot Drain, ARCOM, and Conex | Banninger,

In the New Product Innovation Showcase (booth 753), you can learn about the products manufacturers consider to be their most exciting.

Sponsors

It is very important that you visit the booths of our Expo sponsors this year and thank them for their loyal support. Viega is at the Diamond level, Platinum sponsors include the Copper Development Association, Inc. (CDA), Moen Commercial, and Zurn.

Gold level sponsors include A.O. Smith, Charlotte Pipe and Foundry Company. ICC Evaluation Service, Patterson Pump Company, ASSE International, IAPMO, IAPMO R&T, and SyncroFlo are Supporting level sponsors.

The Lanyard sponsor this year is Watts Water Technologies. Our Light Box sponsor is Bradford White. Charlotte Pipe and Foundry is the Banquet Cocktail Reception sponsor. Charlotte, I must say that is a good sponsorship level to consider!

Rounding out our sponsorship levels are Harsco Industrial, a Patterson-Kelly company, as the Ibeacon sponsor. IPEX is the Window Cling sponsor and Holdrite is our Bag sponsor.

There will be exciting events during the evenings as well as planned trips for spouses. I am so glad my bride of 27 years will be joining me in Phoenix. I will see you there soon.

Best regards,

I would like to know what you think, please reach out to me:

Dann Holmes – ASPE Region 2 Affiliate Liaison

NSF International – Building Water Health

Business Development Manager

r2al@aspe.org or (734) 214-6222

You need 80,000 ft of long-lasting pipe for domestic water, heating/cooling, and compressed air, and ideally it would contribute directly to LEED points.



we've got a pipe for that

Heat-fused Aquatherm polypropylene-random piping systems can be used for virtually any building application and come with a 10-year multimillion-dollar warranty. Throw in material, LEED V4 points and potential labor savings and you'll see why Aquatherm is your best choice.



aquatherm

state of the pipe

801.805.6657 aquatherm.com

The Most Advanced & Complete Grease Removal Systems Product Line Available Anywhere in the Industry!

GreaseStopper®



Featuring

- GreaseStopper® Automatic Grease Interceptors (AGI)
- Flush-in-Floor AGI
- Manual Grease Interceptors
- Passive Grease Interceptors
- Solids Strainers

Highland's Grease Removal Systems are the best choice to pre-treat kitchen wastewater.



Highland Tank

Unmatched Quality and Service

www.highlandtank.com

Phone 814-443-6800

gru@highlandtank.com

Passive Grease Interceptors With exclusive Switchback Baffle System



Flow Control Solutions

V.E. SALES COMPANY, INC.

Cindy Zatto

For additional information on Apollo, Aquatherm, Highland Tank and MIRO products, please contact Cindy Zatto at 810.343.2713 or CindyZ@vesalesinc.com

Who can **YOU trust** in this **lead free** jungle?

We're **still one**...
with foundries, machining and assembly that **never** left the USA



Ball Valves | Mixing Valves | Strainers | Backflow Preventers
APOLLOXPRESS® | and more

Features & BENEFITS

Apollo Quality – EVERY Valve is 100% Tested Before Packaging
Apollo Lead Free Products are 100% ANSI 3rd Party Lead Free Certified
Reliable, Lead Free Metals Don't Cause Any Soldering Issues
Lead Free Inventories for Plumbing, Standard Metals Inventories for Non-Drinking Water
NEW! Easy to Identify White Handles and Large Lead Free Tags
Extensive Line of LEAD FREE Products for the Plumbing Market



"Apollo"
LEAD FREE



learn more at apollovalves.com/lead_free
or call (704) 841.6000
follow us on



The Simple Solution For Rooftop Support



MIRO
INDUSTRIES, INC.
ROOFTOP SUPPORT PRODUCTS

20 Year Warranty | 2.0 PSI or Less
Pre-Assembled | Take-Off to Installation
Made in the U.S.A. | Recycled Material
www.miroind.com



WHAT:	<p>Advancing plumbing engineering for more than 50 years, the 2016 ASPE Convention and Exposition is the ONLY industry event designed to showcase innovations in plumbing system design—where plumbing engineers, designers, specifiers and contractors can learn about the latest plumbing products, services, and design techniques.</p> <p>Combining an extensive line-up of professional development sessions designed exclusively for plumbing industry professionals with the largest plumbing product tradeshow in the country, the 2016 ASPE Convention and Exposition is the must-attend event of the year.</p>
WHO:	<p>Attendees include:</p> <ul style="list-style-type: none"> • Designers • Engineers • Specifiers • Contractors • Wholesaler/distributors • Architects • Master plumbers • Students
WHERE:	<p>Phoenix Convention Center in Phoenix, AZ</p> <p>ASPE has reserved blocks of rooms at special rates for attendees at the following hotels:</p> <ul style="list-style-type: none"> • Sheraton Grand Phoenix • Hyatt Regency Phoenix
WHEN:	<p>Convention: October 28 – November 2, 2016</p> <p>Exposition:</p> <p>October 31, 2016 11:00 am – 5:00 pm</p> <p>November 1, 2016 10:00 am – 3:00 pm</p>
WHY:	<p>The ASPE Convention and Exposition is a one-of-a-kind event showcasing the largest display of plumbing design products and services available.</p> <ul style="list-style-type: none"> • Attendees benefit from extensive education in the technical sessions and on the show, with the ability to earn up to 17.25 hours of continuing education in just one trip. • Eleven exclusive show floor hours allow attendees to ask questions and engage with companies about cutting-edge products and solutions that are accelerating the industry to new heights and greater possibilities. • An enhanced mobile app for 2016 makes it even more efficient to make the most of your attendee experience. • Catch up with plumbing engineering design innovators and peers at numerous networking events including a special party at the Corona Ranch & Rodeo Grounds. Join your fellow attendees and exhibitors for the ultimate Arizona experience that includes music, drinks, food, and dancing!
WEBSITES & LINKS:	<p>2016 ASPE Convention and Exposition: www.aspe.org/expo</p> <p>ASPE www.aspe.org</p> <p>Facebook: https://www.facebook.com/AmericanSocietyofPlumbingEngineers</p> <p>Twitter: http://twitter.com/ASPEorg</p> <p>LinkedIn: http://linkd.in/ASPELinkedIn</p> <p>#ASPEflowswest</p>

NOTE: Managers and Employees can use ASPE resources to calculate the ROI and quantify the benefits of attending the 2016 ASPE Convention and Exposition - follow this [link](https://www.aspe.org/conferences-meetings) to access this resource or go to <https://www.aspe.org> - click on conferences & meetings then click on 2016 convention & expo then click on attendees - justify your attendance.

ASPE EMC BOARD MEMBER

Pam Hartsell, Board Member



The Good Life

By age 25 I was full a time employee, part time student, homeowner and mother. 20 years later, I'm still all of those things, but now I'm a grandmother too, and I also volunteer my time to a handful of causes I care about. My entire adult life has been spent juggling priorities, looking for ways to make the most of what I have, and

always wondering what will come next. There are a few things I've learned to do, though, that have helped me through stressful times and I wanted to share a few of them with my friends in the plumbing industry. I'm so proud to be a part of this community because our hard work literally makes the world a better place and I want us all to feel less stress and more pride in everything we do. Here are my personal tips for living The Good Life:

Do good things when no one else is looking: It's always satisfying to be recognized for your good deeds, but I've learned that the best feelings come from just being proud of yourself. I've actually been criticized for "acting like I'm better than everyone else" when I've done something kind or thoughtful in front of others. When you act anonymously, you get to just feel good about yourself – and no one else gets the chance to judge your intentions.

Save money: The worst feeling I've ever had was as a young single mom, having my gas service shut off because I couldn't pay the bill. It was summer time, so we didn't need heat, but we had no hot water and I was forced to bathe out of a bucket with water I'd warmed up in the electric coffee pot - for three months. It was very humbling but it taught me the importance of saving money so something like that would never happen to me again.

These days, along with saving for retirement, I save for emergencies and I save up for fun experiences. It feels great when an opportunity comes along and my first thought is: Yes – I can afford that!

Always have something to look forward to: A few years ago I realized I was working away, day after day, with no end in sight. It was depressing. Now I take at least two "vacations" every year. One is a visit to my parents in Florida and the other is a trip to the ASPE Convention or Symposium. When one is over I start planning the next so I'm always looking ahead to something I know I'll enjoy. Both trips have some elements that are consistent and some elements that change. Most importantly, though, is that they both involve spending time with people I admire and care about, having fun and learning stuff. These are the best kinds of trips!

Find a common purpose for everything you do: Whatever I'm doing, my main goal is always the same – to make the experience better for the people around me. It's a win-win attitude because even when I screw up (which of course I do!) I can still feel proud of my intentions. I can easily accept my mistakes and go right back to making things better. The people around me, in turn, usually end up doing the same for me. I can't even imagine trying to live differently. I do for others because it's good for me.

I hope my story inspires you to do anonymous good, save your money, plan ahead to have fun and find a common purpose for everything you do. If you have other ideas about what makes a life good, I would love to hear them!

I hope to see you at the Convention! I'll be there, and I'll be having a great time with some of the best people I know!

Pam Hartsell

ASPE EMC Board Member



Attention ASPE Young Professionals!

Your peers have been busy organizing the ASPE Young Professionals (AYP) special-interest group, and we want you to get involved. Send an email to prosenberg@aspe.org if you want to be kept up-to-date on exciting special offerings just for young engineers, including:

- Educational offerings for young engineers and designers
- Partnering with other associations
- Forming a liaison to the national board of directors
- Ways to engage local members on the chapter level
- Developing new marketing materials
- Social functions for young engineers only

INTRODUCING THE FREEZELESS **UNDERCOVER** WALL HYDRANT™



- Model 68 freezeless wall hydrant protected by an integral cover
- Drains automatically—even with hose attached
- Replaceable 16 gauge stainless steel cover flips down for easy access
- Tee key prevents unauthorized use
- Sleek, streamlined, low profile design



WOODFORD



WOODFORD MANUFACTURING COMPANY

Excellence. *Always.*

800.621.6032 • www.woodfordmfg.com

Represented by Burke Agency, Inc. • 248.669.2800

Woodford Model 68

PHOTO FROM SEPTEMBER'S MEETING



Brianne Hall, ASPE EMC President, presents the Certificate of Appreciation to speaker Norm Hall, P.E., President of R.L. Deppmann Company



And we have the extensive product line to prove it.

When you're specifying for the next big job, you're also putting your name on the line. That's why T&S offers a vast selection of high-quality products that meet required codes and compliances — no matter the application. And with a companywide commitment to staying at the forefront of today's evolving industry, it's no wonder engineers everywhere rely on T&S when it matters most.



For in-depth product information, crossover assistance and other helpful resources, visit tsbrass.com.

T&S plumbing products represented in Eastern Michigan by: Diversified Spec Sales - 248-398-2400

THANK YOU TO THE INDIVIDUALS WHO ATTENDED THE SEPTEMBER 2016 MEETING OF THE ASPE EASTERN MICHIGAN CHAPTER!

INDIVIDUAL ATTENDEES

Theresa Allen
Tom Allen
Jeffery Baier
Paul Baker
Alondre Barry
Ross Beck
Jamie Caporosso
David Chwalibog
Alan Deal
Gordon Faustich
Robert Frey
Ron George
William Grayzar CPD
Norman Hall
Brienne Hall P.E.
Norm Hillard
Hank Koppelo CPD
Mike Kowalczyk
Chad Kunding
Greg Lamb

Mark Lamberson CPD
Doris Lawrence
Chris Lieder
Sean McIntosh
William McLaughlin
Michael Melaragni CPD
Larry Mitche
Kimberly Nikkila
Barry Pines CPD
Gerald Potapa
Tim Reynart
Aaron Roberson
Kristin Simoneaux P.E.
Karl Stoolmiller
Kyle Tevault
Frank Tistle
Martial Tsoungui
Casimir Zalewski
Cynthia Zatto

If you are interested in table top sponsorship, please contact Brienne Hall
at bnhall@ftch.com or (248) 324-4780.

Sponsored by



see what Delta can do™

Women of ASPE

ASPE Announces *The Women of ASPE*

The mission of the new Women of ASPE (WOA) special-interest group is to **engage, retain, and advance** women in the plumbing design industry through education, leadership development, and networking opportunities. It is open to women who have an active membership with the American Society of Plumbing Engineers. Some of the activities include:

- Mentoring programs
- Membership growth outreach efforts
- Fostering partnerships with industry-related associations
- Various educational offerings

To join the Women of ASPE special-interest group, email skidd@aspe.org
For more information, visit www.aspe.org/woa



SPONSORED BY



Women of ASPE

Women of ASPE Leadership Forum

The inaugural Women of ASPE (WOA) Leadership Forum is happening at the 2016 ASPE Convention and Exposition. This exclusive event will bring together women in the field of plumbing design to network with your peers, learn about personal branding and how to apply it toward your professional growth, and gain leadership and professional development skills. You will be able to earn 0.6 CEUs in addition to the valuable knowledge and tools you can take back to your office.

Pre-registration at aspe.org/expo is required.

Registration Fee is \$130 if registered for convention or \$175 to attend the Forum only.

Friday, October 28, 9 a.m. – 5 p.m.

Sheraton Grand Phoenix, South Mountain Room

SCHEDULE

- 9:00 – 9:45 a.m. **Meet and Greet**
- 10:00 – 11 a.m. **Replacing “She’s Bossy” with “She’s the Boss!”**
- 11:15 a.m. – 12:15 p.m. **Engineering with Style in a Male-Dominated Field**
- 12:30 – 1:30 p.m. **Lunch with the Society Board of Directors**
- 1:45 – 2:45 p.m. **Say Yes to the Power of Your Personal Brand!**
- 3:00 – 4:00 p.m. **Powerful Presentations: How to Engage Your Audience for Maximum Impact**
- 4:15 – 5 p.m. **Closing Ceremony**

PRESENTERS

Candy Barone, CMCP,
MBA, BSME



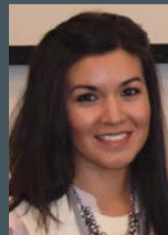
Deirdre Gilmore,
CPSM



Lourdes Gonzalez,
BPM, BPPM



Nancy Lomeli



J. Joe Scott II, CPD,
LEED AP, FASPE



2016 CONVENTION & EXPO | OCT 28 - NOV 2, 2016

BALFREY & JOHNSTON, INC.

Manufacturers' Representatives
13050 Northend
Oak Park, MI 48237
George D. Johnston
Ph 313 864-2800 Fax 313 864-7219
george@balfrey-johnston.com
www.balfrey-johnston.com

KERR PUMP AND SUPPLY

Manufacturers' Representatives
12880 Cloverdale
Oak Park, MI 48237
Chad Kundering
Ph 248 543-3880 Fax 248 543-3236
Mobile 734 812-9490
chad@kerrpump.com

BURKE AGENCY, INC.

Manufacturers' Representatives
2605-A Oakley Park Road
Walled Lake, MI 48390
Brian Burke, Tom Zimmerman, John Taylor
Ph 248 669-2800 Fax 248 669-3310
bburke@burkeagency.com
www.burkeagency.com

MAJOR/LOZUAWAY & ASSOCIATES, INC.

Manufacturers' Representatives
1117 W. Grand Blanc Rd.
Grand Blanc, MI 48439
Mike Ostrowski
Wayne Phillipotts
Ph 810 234-1635 Fax 810 234-8389
moski@lozuaway.com

DALE PRENTICE COMPANY

Manufacturers' Representatives &
Application Engineering Solutions Provider
26511 Harding Avenue
Oak Park, MI 48237
Michael Cullen Cell 248 302-5924
Ph 800 536-4700 Fax 248 339-5559
mcullen@prenticeco.com - www.prenticeco.com

MEEK / BECK & ASSOCIATES, INC.

Manufactures' Representatives
11875 Belden Court
Livonia, MI 48150
Ross Beck
Ph 734 458-2950 Fax 734 458-2953
info@meekbeck.com
www.meekbeck.com

DAVE WATSON ASSOCIATES, INC.

Manufacturers' Representatives
1325 W. Beecher St.
Adrian, MI 49221
Dave Watson, Jr.
Ph 517 263-8988 Fax 517 263-2328
dwa@davewatson.biz

PAUL A. BAKER

ASSE Region #4 Director - Mid West
ASSE International
18927 Hickory Creek Drive, Suite 220
Mokena, IL 60448
Ph 313 399-3072 Fax 248 585-1437
paul.baker@ualocal98jatc.org
www.asse-plumbing.org

**DIVERSIFIED SPEC. SALES, INC./
HOWLEY AGENCY SALES CO.**

Manufacturers' Representative
13261 Northend Ave.
Oak Park, MI 48237-3265
Michael J. Burdette
Ph 248 398-2400 Fax 248 547-4905
www.diversifiedspec.com

PERFORMANCE ENGINEERING GROUP

Engineered Water Products
32955 Industrial Rd.
Livonia, MI 48150
Alan Deal
Ph 734 266-5300 Fax 734 266-5310
www.performanceengineering.com

HS/BUY VAN ASSOCIATES, INC.

Manufacturers' Representatives
56 S. Squirrel
Auburn Hills, MI 48326
Jarrett Armstrong
Bill Allen
Ph 888 472-8982 Fax 248 852-0298
info@hsbuyvan.com
www.hsbuyvan.com

PLUMB-TECH DESIGN & CONSULTING SERVICES

Plumbing-Piping-Fire Protection & HVAC System Design
Code & Standard Consulting-Investigations of system failures
3D CAD, BIM, Revit, Navisworks-Training Seminars-Tech. Reports
303 N. Monroe St., Monroe, MI 48162
Ron George, CPD, President - ron@plumb-techllc.com
Ph 734 322-0225 Cell 734 755-1908
www.Plumb-TechLLC.com

PROGRESSIVE MARKETING & SALES INC.

Manufacturers' Representatives
7450 Hessler Dr. Rockford MI 49341

Dave Andrus 616-916-4140 andrus.progressive@gmail.com
Matt Johnson 517-614-1448 mjohnson.progressive@gmail.com
Doug Shaffer 248-648-0187 shaffer.progressive@gmail.com
www.progressivemarketingandsales.com

TAGGART-KNIGHT GROUP

Manufactures' Representatives
32985 Hamilton Court, Suite 102
Farmington Hills, MI 48334

Gary O. Taggart
Ph 248 553-4388 Fax 248 553-4653
info@taggartco.com
www.taggartknight.com

R.L. DEPPMANN COMPANY

Manufacturers' Representatives
20929 Bridge Street
Southfield, MI 48033

Chris Lieder, Gerry Potapa Jr., CPD,
Mark Fine LEED AP®, Paul Prentice, LEED AP®
Ph 800 589-6120 Fax 248 354-3763
sales@deppmann.com - www.deppmann.com

QUALITY WATER & AIR, INC.

Manufacturers' Representative
1402 Souter
Troy, MI 48083

Georgann Kummer, WBE
Ph 248 589-8010 Fax 248 589-8016
qualitywaterair@cs.com
www.qualitywaterair.com

V. E. SALES COMPANY

V. E. Sales is your source for
the finest quality flow control solutions.

25200 Jefferson Ave.

St. Clair Shores, MI 48081

Thomas Van Egmond

Ph 586 774-7760 Fax 586 774-1490

www.vesalesinc.com



**AS AN ASPE MEMBER YOU
CAN RECEIVE THE PIPELINE
PUBLICATION - ACCESS
ARCHIVE EDITIONS AT
<http://aspe.org/Pipeline>**

EXPAND
YOUR COMPANY
PLACE YOUR AD HERE

ASPE NEWS

American Society of Plumbing Engineers-Eastern Michigan Chapter

Theresa Green, Newsletter Editor
MCA Detroit / tgreen@mcadetroit.org

Internet Address
<http://eastern-michigan.aspe.org>
Region 2 - Great Lakes
Eastern Michigan

Non-Profit Corporation
Local Chapters Not Authorized To Speak For
The Society

First Class Mail

2016-2017 ASPE EMC Board and Committee Chairpersons

President

Brianne Hall, P.E., CPD, LEED
AP BD+C, GGP
FTC&H
39500 Mac Kenzie Dr. Suite 100
Novi, MI 48377
(248) 324-4780
bnhall@ftch.com

Vice President Technical

Theresa Allen, P.E., CPD, LEED
AP BD+C, GPD
IBI Group
25200 Telegraph Rd., Suite 200
Southfield, MI 48033
(248) 936-8000
theresa.allen@ibigroup.com

Vice President Legislative

William Grayzar, CPD
28150 Greenfield Rd.
Southfield, MI 48076
(248) 569-1430 ext.333
bill@dsonline.com

Vice President Membership

Kristin Simoneaux, P.E., CPD,
LEED AP
Stantec
2338 Coolidge Hwy. #100
Berkley, MI 48072
(248) 336-4700
kristin.simoneaux@stantec.com

VP Education

Mark Lamberson, CPD
81190 Church Street,
Memphis, MI 48041-5401
(810) 392-5010
vpe.aspe.emc@gmail.com

Treasurer

Hank Koppelo, CPD
Bill James Plumbing, Inc.
25519 John R Road
Madison Heights, MI 48071
(248) 548-1500
hkoppelo@billjamesinc.com

Administrative Secretary

Amanda Belcher, LEED GA
Strategic Energy Solutions
4000 W. Eleven Mile Rd.
Berkley, MI 48072
(248) 399-1900 Fax 399-1901
amandab@sesnet.com

Corresponding Secretary

George D. Johnston
Balfrey & Johnston, Inc.
13050 Northend
Oak Park, MI 48237
(313) 864-2800 Fax:
864-7219
george@balfrey-johnston.com

Chaper Affiliate/Liaison

Dann Holmes
NSF International
789 N. Dixboro Rd
Ann Arbor, MI 48105
(734) 214-6222
r2al@aspe.org

Board Member

Cindy Zatto, FASSE
V. E. Sales Company, Inc.
25200 Jefferson Ave.
St. Clair Shores, MI 48081
(586) 774-7760 Fax: 774-1490
cindy@vesalesinc.com

Board Member

Michael Melaragni, CPD
Guardian Plumbing & Heating
34400 Glendale Avenue
Livonia, MI 48150
(734) 513-9550

Board Member

Joseph V. Hernandez, CPD
7360 Katrin Drive
Bloomfield, MI 48322
(248) 539-7665
joeh7360@gmail.com

Board Member

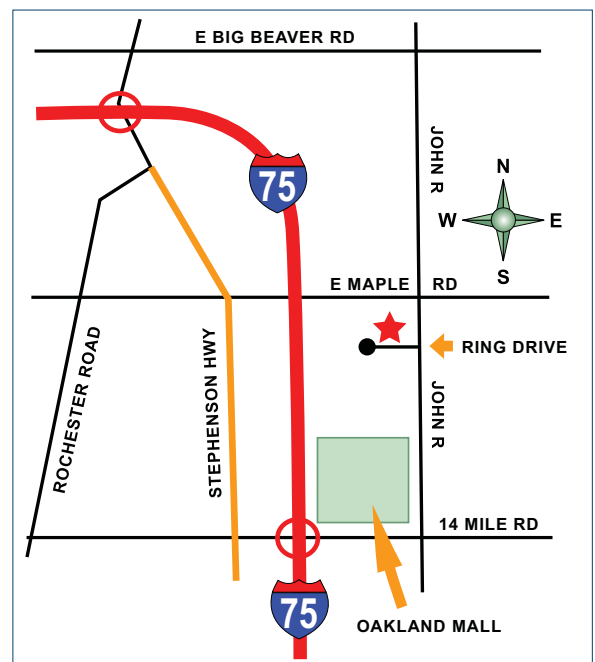
Pam Hartsell, CPD
Strategic Energy Solutions
4000 W. Eleven Mile Rd.
Berkley, MI 48072
(248) 399-1900 x 222
Fax: 399-1901
p_hartsell@yahoo.com

Chapter Historian

John Nussbaum, IPP, FASSE, FASPE

Map to the Plumbing Industry Training Center 1911 Ring Drive - Troy, MI

West of and off John R, north of 14 Mile Rd.



ASPE EMC News is published 9 times per year (September through May, plus one summer issue if feasible). Yearly advertising rates are \$150.00 per ad for members and \$200.00 for non-members. One time digital full page insert advertisements are \$250.00 for one issue, quarter page (9 issues) \$250.00 - half page (9 issues) \$350.00 - three quarter page (9 issues) \$450.00 and full page (9 issues) \$550.00. Please call Theresa Green for any questions regarding pricing of ads. Checks should be made payable to ASPE E. Mich. Chapter and mailed to the attention of Hank Koppelo at 25519 Johns Rd., Madison Heights, MI 48071. All newsletter digital inserts should be emailed to ASPE EMC c/o Theresa Green. Circulation 400 - Distributed to: Engineers, Contractors, Inspectors, and other industry professionals in Michigan. For contributing articles contact Theresa Green, Newsletter Editor at: tgreen@mcadetroit.org.