



2014 McCloskey Bros R155 5 x 16 Ft 2 Deck

rb RITCHIE BROS.
Auctioneers®

60
YEARS

Williston, ND
September 14, 2018 (Friday)

Unreserved public auction



2011 Caterpillar D8T



1 of 2 – 2011 John Deere 250G



1 of 2 – 2014 Vermeer D36X50 Series II



2012 Western Star 4900A Tri Drive w/Tornado



2 – 2015 Caterpillar 627K

ACCEPTING CONSIGNMENTS, CONTACT US NOW

rbauction.com

Williston, ND

September 14, 2018

Friday 9:00 am

Phone: **701.774.9640**

Fax: 701.774.9641

Equipment site: 5589 141st Ave NW,
Williston, ND 58801

400+ items & counting

Bid in person or online

On-site registration starts: **Sep 12 (Wed)**

Inspection hours: **Mon–Fri, 8 am–5 pm**

Items must be removed by: **Sep 21 (Fri)**

Ritchie Bros. Auctioneers (America) Inc. Auction Clerk License #225
Auctioneer Gregory M. Highsmith # 701



Car rentals

Take advantage of exclusive rental car discounts.

AVIS code: C039702 | **Budget code:** A062002

Location of auction

This auction will be held at the
Grand Williston Hotel & Conference Center
3601 2nd Avenue West, Williston, North Dakota 58801



Auction highlights

Equipment from:
Southland Trailer Corp.
and other owners.

Visit rbauction.com for complete auction information

- Full equipment listings, more photos and detailed equipment information
- New additions to each auction – items added daily!
- Deposit and payment information, including financing, wire transfer accounts and taxes
- Full auction schedule, with times and lot numbers
- Maps, hotels and other local services

Auction notes

- ▶ Every item is sold 'as is, where is'
- ▶ International and online bidders – you may need to place a refundable deposit before you bid – check the auction details on our website for more information
- ▶ Transaction fee: (a) 10% on all lots selling for \$5,000 or less, (b) 3.85% on all lots selling for over \$5,000 up to \$33,500, with a minimum fee of \$500 per lot or, (c) \$1,290 on all lots selling over \$33,500.

Directions to equipment site

From Williston International Airport: From Airport Rd proceed south on Hwy #2. Follow Hwy #2 until you reach the turnoff for Hwy #85. Turn right/north onto Hwy #85 and proceed north until you reach 140th Ave NW. Turn right onto 140th Ave NW and proceed to 56th St. NW. Turn right onto 56th St. NW and proceed to 141st Ave NW. Turn left onto 141st Ave NW. Follow signs to equipment site.

Equipment listings

Construction

13- Crawler tractors • wheel loaders • skid steer loaders • multi terrain loaders • motor graders • motor scrapers • hydraulic excavators • articulated dump trucks • cable plows • trenchers • directional drills • loader backhoes • hydraulic truck cranes • vibratory padfoot compactors • tandem rollers • walk behind compactors • screen plants • conveyors • scales • aggregate equipment.

Trucks & trailers

Trucks include: Winch tractors • **43-** truck tractors • dump • tank • bucket • vacuum • mechanics • van • cab & chassis • flatbed • **22-** pickups • automobiles •

Trailers include: Lowboys • jeeps • hiboy • pneumatic bulk • oilfield floats • bottom dump • **17-** van • vacuum • **30-** tank • **43-** equipment • reel • **14-** misc trailers • mobile structures.

Other items include

4WD agricultural tractors • 2wd agricultural tractors • discs • pull scrapers • all terrain vehicles • recreational vehicles • drills • air compressors • consumer generator sets • light generator sets • light towers • pumps • tanks • concrete equipment • container equipment • drill parts & accessories • equipment attachments • truck attachments • industrial items • equipment parts • shop & warehouse items • parts & stationary items - transportation

BID & BUY ON THE GO!

Download the Ritchie Bros. app today.

rbauction.com/app





1 of 3 – Caterpillar D7R LGP



1 of 3 – Caterpillar D6R LGP



Caterpillar D6R XL



2 of 3 – John Deere 650J LGP



John Deere 850C LGP w/Wolf Slasher 1040SST Mulcher



Caterpillar 950H



Caterpillar 938G



1 of 2 – 2012 Caterpillar 950K



2012 Caterpillar 272C 2 Spd



Caterpillar 246



Caterpillar 297C 2 Spd



Caterpillar 14H VHP



Caterpillar 637D



Caterpillar 615C



Caterpillar 345CL



Caterpillar 330CL



Caterpillar 325CL



Caterpillar 325CL



2012 John Deere 290G



1 of 2 - Vermeer RTX1250 4x4



2 of 3 - Vermeer D36X50 Series II



1 of 2 - Vermeer D6X6



Mack CH613 Winch



International 9900i



Kenworth W900



3 of 4 – Peterbilt 367



1 of 3 – Kenworth T800B



Peterbilt 387



Peterbilt 379EXHD



2012 Volvo VNL64T630



2013 Kenworth T800



Kenworth T800



Western Star 4964



2014 Caterpillar CT660L



Kenworth W900 & 2014 Etnyre ACXR-DRT T7036



1 of 2 – 2009 Peterbilt 340



International 2674 4400 Gallon



1 of 2 – Peterbilt 378 3500 Gallon



Talbert



XL Specialized XL70SA



1 of 4 – Unused – 2019 Royal Cargo LCHT35-716-78 16 x 7 Ft



1 of 2 – Beall BATT7733 7700 Gallon



Heil MS-306AL 9600 Gallon



2012 Wilco WLFCT4100 4100 Gallon



1 of 6 – Unused – 2019 Southland SL235T-10LB 10 Ft



1 of 3 – Unused – 2018 Southland LB22T-21 22 Ft x 6 Ft 8 In.



2016 Brooks Brothers 3RT 243 12KE



2016 Brooks Brothers SL202 7KE



3 of 6 – Pratt Industries Chemical Injection



3 of 5 – Sand King FS-30 111 Cu Yd



John Deere 9630



2011 Sand King FS-40 148 Cu Yd



1 of 2 – 2011 Kem Tron Tango 500T



Farr LW10750 Power Tongs



International 4200 w/Reedrill Texoma 270



Bron HS2 Cable Plow



2012 Vermeer HDT1250 72 In.



2 – Acid Frac Tanks

Real estate on Marketplace-E by IronPlanet

Property may be viewed by appointment



American Casing – Williston, ND
 7 Parcels of Commercial Real Estate
 15.0± Title Acres – (3) Shop/Office Buildings
 (2) Insulated Steel Storage Buildings

2721 W Front St, Williston, ND 58801

Nestled in the heart of North Dakota oil country, this property sits on 15 acres and has 7 parcels, and egress off three roadways thru the City of Williston. This location is located minutes from the airport, and offers 3 shops and offices with amenities; and (2) insulated steel storage buildings.

The state of the art main building is 20,000± sq ft and has upper level corporate offices, 7 bay shop, geo-thermal heating/cooling system, 3 phase electrical with a 480 amp service with a transformer. It also has a wash-bay, overhead cranes, tire changing system, part washer, truck lift system, and driver locker room. The property accesses city water and has a private mound system septic. This building is the envy of all in town.

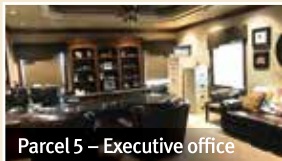
The two other shop office areas have their own access, which leads to a potential leasing opportunity. Both buildings offer office shop setting, private well and septic, and plenty of square footage and outside storage to accommodate most contractors.



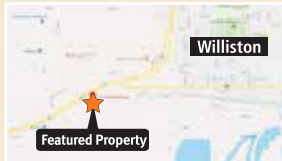
Parcel 5 – Shop



Parcel 5 – Washbay



Parcel 5 – Executive office

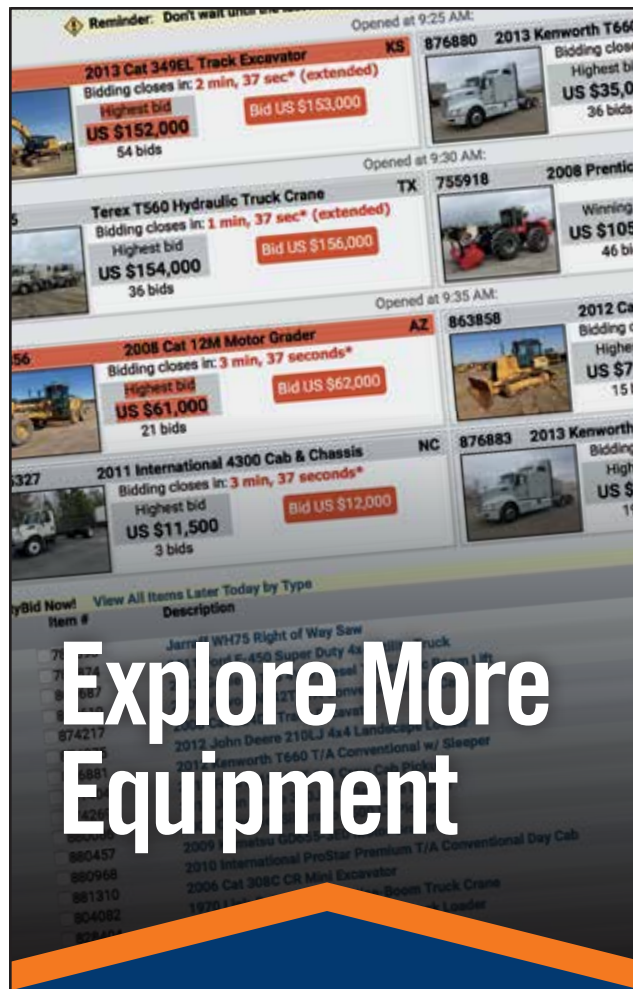


Featured Property

Ritchie Bros. Territory Manager
 Chris Gellner: 701.388.8200, cgellner@ritchiebros.com
 Ritchie Bros. Real Estate – Broker
 Steve Speer: 612.518.0095, sspeer@rbauction.com Broker #7848



For property details and to make an offer visit:
IronPlanet.com/realestate



Explore More Equipment

Check IronPlanet's weekly online equipment auctions

ironplanet.com



Upcoming auctions around the world

USA

- Columbus, OH Sep 11
- Chehalis, WA Sep 12
- Atlanta, GA Sep 12
- Nashville, TN Sep 14
- Williston, ND Sep 14
- North East, MD Sep 18
- Chicago, IL Sep 19
- Sacramento, CA Sep 21
- North Franklin, CT Sep 21
- Fort Worth, TX Sep 25–26
- Los Angeles, CA Sep 28
- Denver, CO Oct 3
- Wasilla, AK Oct 6
- Las Vegas, NV Oct 12

Canada

- Edmonton, AB Sep 4–6
- Winnipeg, MB Sep 11
- Truro, NS Sep 12
- Montreal, QC Sep 18–19
- Toronto, ON Sep 25–26

International

- Polotitlan, MEX Sep 7
- Ocana, ESP Sep 12–14
- Geelong, AUS Sep 13
- Donington Park, GBR Sep 18–19
- Dubai, UAE Sep 18–19

* NOTE: NEW DATE



2015 Caterpillar 160M3 AWD VHP Plus



2011 Caterpillar 730 6x6



2013 Caterpillar 336EL



Grove TMS870B



2010 Vermeer D100X120 Series II



1 of 2 - 2013 Peterbilt 337

It's back for a limited time only

NO PAYMENTS
FOR
120 DAYS*
Apply today

*OAC. Terms and conditions apply.

Call **1.855.331.7237** or visit rbauction.com/Flex

See complete auction and equipment information on our website

rbauction.com

Equipment videos, photos, auction news and more.
Like us on facebook.com/RitchieBros



Scan using your device's camera or a QR code reader.

Williston, ND | September 14, 2018 (Friday)

rbauction.com

rb RITCHIE BROS.
Auctioneers®

60
YEARS