



NAUPAKA NEWS

RELAX, SHOP & PLAY AT WAIKOLOA BEACH RESORT

In This Issue



1 • RESPECTFUL TRAVEL

As visitors flock back to the islands, residents and industry professionals ask for a pledge.



8 • SHOPPING GUIDE

From casual beach wear to fine art, there's a retailer who has what you need.



10 • DINING

Hungry? There are many delightful dining choices at Waikoloa Beach Resort.



Pono Pledge

ENCOURAGING MINDFUL TRAVEL

"Pono extends beyond its many English translations. To live pono is to be in perfect harmony with all things — and to be aligned with your custodial relationship with the planet and its inhabitants."

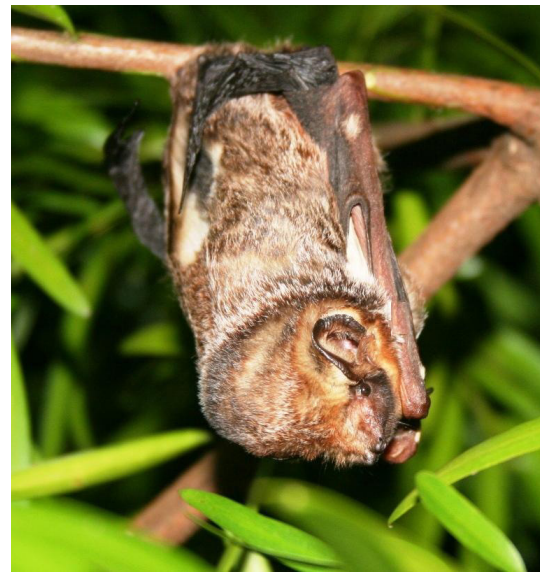
—Larry Lindsey Kauanoe Kimura, Grandfather of Hawaiian Language Revitalization

IN THE SPRING OF 2021, AS TRAVEL WAS STARTING TO SHOW SIGNS OF A RECOVERY FROM ITS COVID-19 SHUTDOWN, conversations were being had throughout Hawai'i about how to better manage the industry that's so important to the state's economy. During the year "off," residents found that typically congested roads were wide open, crowded beaches they suddenly had almost to

themselves, and endangered environments dramatically improved.

Then, before the conversations were finished and before any new policies could be put in place to try to balance the needs and enjoyment of residents with those of visitors, the floodgates opened.

Timing was perfect to reinvigorate the island of Hawai'i Pono Pledge, which was first born in 2018 (*see sidebar*). The



The endangered species found mainly or only in Hawaiʻi include the Green Sea Turtle (*honu*), the Hawaiian Hoary Bat (*ʻōpeʻapeʻa*), the Hawaiian Hawk (*ʻio*), the Hawaiian Monk Seal (*ʻilīo holo i ka uaua*), and the state bird, the Hawaiian Goose (*nēnē*). There are many more.

concept is simple and applies to all travelers: that no matter where your wanderlust takes you, to be mindful of the place and the people who call that special place home.

ENDANGERED SPECIES CONCERNS

Of the 1,653 species listed as endangered or threatened in the United States, nearly a third (501 species) are found in Hawaiʻi. That's nearly double the next highest state, California, which has 301. North Dakota has nine.

The endangered species found mainly or only in Hawaiʻi include the Green Sea Turtle (*honu*), the Hawaiian Hoary Bat (*ʻōpeʻapeʻa*), the Hawaiian Hawk (*ʻio*), the Hawaiian Monk Seal (*ʻilīo holo i ka uaua*), and the state bird, the Hawaiian Goose (*nēnē*). There are many more.

The Pono Pledge seeks to make visitors aware that even seemingly innocent acts, such as applying sunscreen when going to the beach, can have harmful consequences, as scientists believe that products containing oxybenzone and octinoxate — two common ingredients

in sunscreen — contribute to bleaching in coral reefs. Studies have estimated that up to 14,000 tons of sunscreen end up in Hawaiʻi's coral reefs every year.

Consequently, state lawmakers passed a bill in 2018 that bans the sale and distribution of sunscreens containing those ingredients that went into effect earlier this year.

Coral bleaching — which on Hawaiʻi Island disproportionately affects the Kohala Coast — not only deprives swimmers and snorkelers of a more colorful experience, but it lessens food supplies for fish and other undersea life, and thus the entire ecosystem is compromised. (It should also be noted that ocean warming is thought to be largely responsible for coral bleaching.)

PONO TRAVEL

“We hope when visitors come to visit our beautiful Hawaiʻi, that they come with an open mind and open heart,” says Pono Pledge ambassador and *kahu* (respected elder), Earl Regidor. “And be able to learn from the people that live here in hopes that they too will want to experience the beauty of the culture, the history, the people, and of course the *ʻāina* (land).”

“What I think travel *pono* is about is being mindful of how you interact with the land,” says Soni Pomaski, restaurateur and another Pono Pledge ambassador. “Enjoy it, share it with people, but leave it as it is. Everything is alive and everything should be treated with reverence and respect, and I think that's the best way to enjoy it.” ●

PONO PLEDGE

I pledge to be pono (righteous) on the island of Hawaiʻi.
E kū i ka pono ke kipa i Hawaiʻi.

I will mindfully seek wonder,
but not wander where I do not belong.
E nanea i ka ʻikena, ʻaʻole hoʻi e kiʻi hele hewa i kahi kuleanaʻole.

I will not defy death for breathtaking photos,
trespass or venture beyond safety.
E nihi ka helena i ka uka o Puna, mai pūlale i ka ʻike a ka maka.

I will mālama (care for) land and sea, and admire wildlife
only from afar.
*E mālama ʻia ke kai a me ka honua,
a e mahalo ʻia ko lāila mau ola lōhiu mai kahi mamao aku.*

Molten lava will mesmerize me, but I will not disrupt its flow.
*Hoʻohihi ka maka i ke ahi a ka Wahine,
he ahi ʻenaʻena e akahele ai.*

I will not take what is not mine,
leaving lava rocks and sand as originally found.
*ʻAʻole e kāʻili ʻia kā haʻi, e waiho
ʻia ka pōhaku a me ke one i kona wahi ponoʻī.*

I will heed ocean conditions,
never turning my back to the Pacific.
E nānā pono i ke kai, ʻaʻole e huli kua ʻia.

When rain falls ma uka (inland), I will remain high above ground,
out of rivers and streams.
Ke loku mai ka ua i uka, e ao aʻe i ia wai makamaka ʻole.

I will embrace the concept of being a steward of the land,
revered as my loving chief.
He aliʻi ka ʻāina, he kauā ke kanaka.

For more information and to sign the Pono Pledge, visit: PonoPledge.com, or scan the QR code below.



See our
website
for more
information.



Queens’ MarketPlace

Open Daily | Store hours vary,
please call or visit their websites for
hours and more information

ART & JEWELRY

Genesis Galleries
(808) 886-1770

Hawaii Fluid Art
(808) 344-4878

Island Pearls
(808) 886-4817

Kozy’s Tiki Palace
(808) 430-1957

Lava Light Galleries
(808) 756-0778

Mashka Jewelry
Coming Soon

ENTERTAINMENT

Waikoloa Luxury Cinemas
(808) 464-3009

FASHION

Blue Ginger Family
(808) 886-0022

Cariloha
(808) 886-2608

Crocs™ Shoe Store
(808) 886-0213

Kona Surf N’ Sandals
(808) 886-0898

Mahina
(808) 886-4000

Malibu Shirts
(808) 886-0003

Olivia Clare Boutique
(808) 657-4307

PacSun
(808) 886-0415

Quiksilver
(808) 886-0900

Reyn Spooner
(808) 886-1162

Volcom
(808) 886-6888

GROCERY

Island Gourmet Markets
(808) 886-3577

REAL ESTATE

Hawai`i Life Real Estate Brokers
(800) 667-5028

Home River Group
(808) 883-9550

Kona Coast Vacations
(808) 329-2140

Windermere C & H Properties
(808) 883-3321

SERVICES

Aston Hotels & Resorts
(808) 886-5001

**Fidelity National Title
& Escrow of Hawaii, Inc.**
(808) 451-2360

Hilton Grand Vacations Club
(808) 886-0945

KOR Salon
(808) 886-8090

Rider Levett Bucknall
(808) 883-3379

Waikoloa Dental Clinic
(808) 886-0891

SPECIALTY & GIFTS

Claire’s
(808) 886-8905

Da Big Bags
(808) 989-8709

Hawaiian Ukulele and Guitar
(808) 315-2919

Hawaiian Quilt Collection
(808) 886-0494

Lids
(808) 886-1649

Pacific Nature
(808) 886-8919

SoHa Living
(808) 464-4268

Sunglass Hut
(808) 886-0274

SPORT & ACTIVITY

Bike Works Beach & Sports
(808) 886-5000

Blue Wilderness Dive Adventures
(808) 886-0980

Yoga Barre
(808) 333-5378



STORE SPOTLIGHT

DA BIG BAGS

Da Big Bags makes packing for travel fun with their full line of luggage, totes, and bags all designed with a touch of Aloha in stylish Hawaiian prints. The hard-sided luggage protects your items expertly and with unique designs you for sure won’t be wondering which bag is yours at baggage claim. Carry-on bags including backpacks are also popular. Da Big Bags also carries clothing, jewelry, and accessories, including “The Magic Skirt.” One skirt, 100 ways to wear.” Check ‘em out at Queens’ MarketPlace or at their Kona location.

WHERE: Queens’ MarketPlace
(808) 989-8709

Aloha

Kings’ Shops

Open Daily | Store hours vary,
please call or visit their websites for
hours and more information

ACCESSORIES

Mary Jane’s
(808) 886-2707

Michael Kors
(808) 886-2653

Sunglass Hut
(808) 886-0593

APPAREL

Crazy Shirts
(808) 886-9303

Honolua Surf Co.
(808) 886-6422

Jams World
(808) 796-3182

Kona Harley-Davidson
(808) 464-4033

Noa Noa
(808) 886-5449

Rip Curl
(808) 886-1952

Tommy Bahama
(808) 886-8865

Tori Richard
(808) 886-8308

ART & JEWELRY

**Aesthetic Hawaii
by Genesis Galleries**
(808) 731-6280

Giving Bracelets
(808) 445-9951

Kohala Coast Fine Art
(808) 886-4240

Maui Divers Jewelry
(808) 886-0055

Nā Hōkū
(808) 886-7599

Royal Gold
(808) 886-7701

Tiffany & Co.
(808) 886-1931

ENTERTAINMENT

For current information call
Kings’ Shops Management Office
(808) 886-8811

SERVICES

Big Island Motorcycle Co.
(808) 886-2011

Compass Real Estate
(808) 430-2184

**Hawaii Vacation Condos
by Outrigger**
(808) 886-0036

Hulakai
(808) 731-7945

Kings’ Shops Management Office
(808) 886-8811

Kohala Coast Properties
(808) 886-6600

ReMax Lava Luxury
Coming Soon

Shell Gas Station
(808) 886-9512

Team Clean
(808) 944-8255, ext. 108

SPECIALTY & GIFTS

Martin & MacArthur
(808) 886-0696

Whalers General Store
(808) 886-7057

Waikoloa Beach Marriott Resort & Spa

Travel Traders
(808) 886-8146
Daily 8 am – 10 pm

Mandara Spa
(808) 886-8191
Daily 10 am – 5:30 pm

Waikoloa Beach Resort Golf Shop

Golf Pro Shop
Open daily 6:30 am to 6:30 pm
(808) 886-7888



waikoloa

Hilton Waikoloa Village

Open Daily – Hours vary seasonally.
All phone numbers are
(808) 886-1234, with the extension
noted below:

**Dancing Dolphins and
Big Island Marketplace**
ext. 1744, 1746

Dolphin Quest Gift Shop
ext. 1216

Journey
ext. 1546

**Kohala Spa Essence and
Kohala Spa Retail Shop**
ext. 1768 or ext. 1228

Nā Hōkū
ext. 1750

Things Hawaiian
ext. 1232



Marriott.com

SUNSET LŪ`AU

Mondays & Wednesdays | 5 pm

GATHER AS THE SUN SETS OVER BEAUTIFUL ANAEHOOMALU BAY and enjoy a traditional Hawaiian dinner. Then journey to Tahiti, New Zealand, Hawai`i, and Samoa through songs and dances of these Pacific cultures. The spellbinding Samoan fire dance is a spectacular sight.

Guests are seated at their own table. Maximum guests per table from the same household is 10. Food service is a combination of family style and a hot station.

General seating prices are \$173 inclusive for adults, \$85 for *keiki* 6-12

years old, and *keiki* 5-and-under are FREE. A selection of tables on the first three rows are assigned to **Premier Seating**. Each guest receives a fresh flower lei and an individual gift box of Hawaiian treats. Premier guests are the first released to the hot food station; additional \$37 per seat.

For reservations visit fareharbor.com/marriottsunsetluau

Cancellations must be received 24 hours before your scheduled Luau. There will be no refund if cancellation is not received 24 hours out.

IRONMAN WORLD TRIATHLON AID STATION

Saturday, October 9

| Meet in Lobby

SPEND THE DAY AS AN IRONMAN VOLUNTEER at our Aid Station on Queen Kaahumanu Highway. Transportation, food, and beverages provided.

DINING GUIDE

Restaurants open daily unless noted.



CLOCKWISE
FROM ABOVE:
Bistro at the
Cinemas,
KPC – Kamuela
Provision
Company, Lava
Lava Beach Club

GOLF COURSE

**Mai Grille,
By Chef Allen Hess**
(at Kings' Clubhouse)
(808) 886-7600
MaiGrille.com

Breakfast and lunch
8 am – 3 pm

Sunday Brunch
7:30 am – 2:30 pm

**Tropics Ale House
and Restaurant**
(808) 886-4287
TropicsAleHouse.com

Lunch and dinner
11 am – 10:30 pm

LAVA LAVA BEACH CLUB

(808) 769-LAVA (5282)
LavaLavaBeachClub.com

Lunch and dinner
Noon – 9 pm

Bar open until 9 pm

Henry Kaponono will be performing the evenings of September 17 and October 22.

Bikinis and board shorts welcomed! Live entertainment nightly.

HILTON WAIKOLOA VILLAGE

(808) 886-1234
HiltonWaikoloaVillage.com/dining

**Big Island Breakfast
at Water's Edge**

A lavish breakfast and a la carte options in a relaxed atmosphere.

7 – 10 am

Nui Italian

Authentic, family-friendly Italian dining including stone-fired pizzas, pastas, salads, and more.

Lounge and dinner
5 – 9 pm

**KPC – Kamuela
Provision Company**

KPC offers Hawai`i Island's most spectacular sunset views. Locally sourced cuisine, from prime steaks to Hawaiian seafood.

5:30 – 9:30 pm

Lagoon Grill

Grab a burger, sandwich, salad, or Hawaiian bowl for lunch or early dinner and watch dolphins playing in the lagoon below.

11 am – 7 pm

Kona Tap Room

A fun gathering place with an array of craft and domestic beers and casual pub fare.

4:30 – 10:30 pm

Orchid Marketplace

Next to Kona Pool, this outdoor eatery provides a great location for a quick bite.

Food to go
11 am – 4 pm

Waikoloa Coffee

6 am – noon
in Ocean Tower

6 am – noon
in MAKAI



WAIKOLOA BEACH MARRIOTT RESORT & SPA

(808) 886-8165
Marriott.com

**Hawaii Calls
Restaurant & Lounge**

Breakfast
7 – 10:30 am

Lunch
11 am – 5 pm

Happy Hour
2 – 4 pm

Dinner
5 – 9 pm

Live Entertainment Friday, Saturday, & Sunday, from 5:30 - 7:30 pm, featuring some of Hawai`i's local musical artists

DINING SPECIALS:
Taco Tuesday
Tuesdays, 5 – 9 pm

Coffee Shoppe

Akaula Lanai – Lobby Level
6:30 am - 12:30 pm

Nalu's

Poolside Bar
10:30 am - 5:30 pm

KINGS' SHOPS

A-Bay's Island Grill

(808) 209-8494
A-Bays.com

8 am – midnight

Foster's Kitchen

(808) 657-4500
FostersKitchen.com

Daily lunch and dinner
11 am – 10 pm

Island Fish & Chips

(808) 886-0005
KingsShops.com/island-fish-chips

7:30 am – 9:30 pm

Roy's Waikoloa Bar & Grill

(808) 886-4321
RoisHawaii.com

Dinner 5 – 9 pm

Island Vintage Coffee
(coming soon)

The Original Big Island Shave Ice Company

(808) 895-6069

Tuesday – Sunday
11:30 am – 6:30 pm

Farmers Market

Explore the Kings' Shops Farmers Market every Tuesday from 9 am – 2:30 pm



(808) 886-1234 | HiltonWaikoloaVillage.com

Legends of Hawai`i Lū`au — Our Big Island Story

Sundays, Tuesdays, Fridays
5:30 pm | Kamehameha Court

TREAT YOURSELF TO THE ONCE-IN-A-LIFETIME CULTURAL IMMERSION of our *lū`au* at Hilton Waikoloa Village. Brought to you by Tihati Productions, the Legends of Hawai`i Lū`au dinner and show brings to life the ancestral songs and dances that retell the epic stories of Hawai`i Island and her remarkable people.

You'll receive a lei greeting upon arrival and have the opportunity to capture memories with photos with our *lū`au* performers. The meal includes island favorites such as huliuli chicken, seared island catch-of-the-day, and the traditional *imu* kālúa pig, and fresh daily Hawaiian style desserts. Our signature mai tais are made with fresh pineapple juice.

Make reservations in advance at legendsluau.com. Book early to get your spot.



KAMUELA PROVISION COMPANY

Exclusive Outdoor Dining on the Ocean Front Lanai of Kamuela Provision Company with the Chef's Menu

The Ocean Front Lanai offers guests an unrivaled ambiance complemented by sunset views of the Pacific ocean. All dining reservations specific to the Ocean Front Lanai are served a three-course chef's menu starting at \$85 per person.

Indoor Ala Carte Dining

Seating for à la carte dining is limited to indoor tables.

Call (808) 886-1234 for reservations.



DINING GUIDE



Charley's Thai Cuisine

QUEENS' MARKETPLACE

Bistro at the Cinemas

(808) 464-3009
HawaiiCinemas.com/
the-bistro

Monday – Friday
11:30 am – 9 pm

Saturday – Sunday
10:30 am – 9 pm

Charley's Thai Cuisine

(808) 886-0591
CharleysThaiHawaii.com

Lunch 11 am – 3 pm
Dinner 5 – 9:30 pm

Kuleana Rum Shack

(808) 238-0786
KuleanaRum.com

Lunch and dinner
11:30 am – 9:30 pm

Romano's Macaroni Grill

(808) 443-5515
MacaroniGrill.com

Sunday – Thursday hours
11 am – 9 pm

Friday – Saturday
11 am – 10 pm

Sansei Steak & Sushi Bar

(808) 886-6286
SanseiHawaii.com

Take-out
Tuesday – Saturday
5 – 8 pm

Sunday – Monday
6 – 8pm

Dine In
5 – 8 pm

Starbucks Coffee Company

(808) 886-1888
Starbucks.com

4:30 am – 9:30 pm

QUEENS' MARKETPLACE ONO FOOD COURT

7:30 am – 9:30 pm
(Individual times may vary)

Dairy Queen/
Orange Julius
(808) 886-1029

Ippy's Hawaiian BBQ
(808) 886-8600



Sansei Steak & Sushi Bar

Restaurants
open daily
unless noted.



WaikoloaBeachResort.com