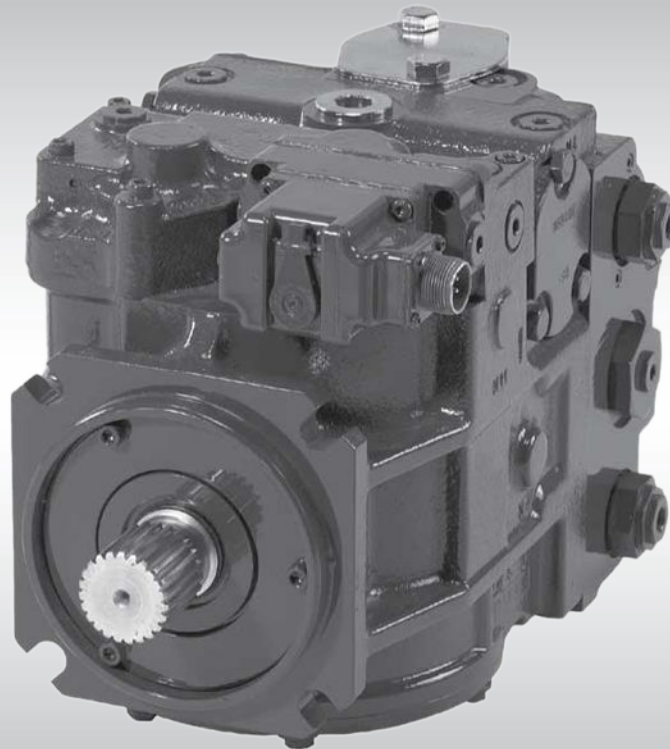




Electrical Installation

Series 90 Pump

# Electrical Displacement Control (EDC)



**Revision history***Table of revisions*

<b>Date</b>	<b>Changed</b>	<b>Rev</b>
September 2015	Minor correction to layout	BB
August 2015	Converted to Danfoss layout	BA
September 2010	PWM frequency recommendation	BA
September 2007	Maximum current specification corrected in table	AB
April 2007	First edition	AA

**Contents****Literature references**

S90 Pump EDC literature references.....	4
Latest version of technical literature.....	4

**Product overview**

Product image.....	5
Nomenclature.....	5
Theory of operation.....	6
Pump displacement versus control current.....	6
Hydrostatic drive line power.....	6
Hydraulic schematics.....	7
Electrical specifications.....	7

**Electrical installation**

Pinout.....	8
Pin compatibility.....	8
S90 EDC input/output matrix.....	9
Mating connector.....	9

**Literature references****S90 Pump EDC literature references**

<b>Literature title</b>	<b>Description</b>	<b>Literature number</b>
<i>S90 Axial Pumps Technical Information</i>	Complete product electrical and mechanical specifications	520L0603
<i>S90 EDC Control Compliant Function Block User Manual</i>	Compliant function block set-up information	11022912

**Latest version of technical literature**

---

Danfoss product literature is online at: <http://powersolutions.danfoss.com/literature/>

---

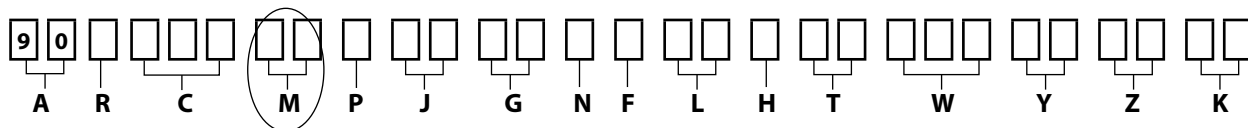
Product overview

Product image

S90 Pump EDC



Nomenclature



M module - EDC control options

Option	Description
KA	Electrical Displacement Control
KP	Electrical Displacement Control

Only certain control options for the Series 90 pump utilize the Electrical Displacement Control (EDC). Please refer to the pump's nomenclature to determine if the pump is equipped with the proper option. The nomenclature can be found on the pump's name tag.

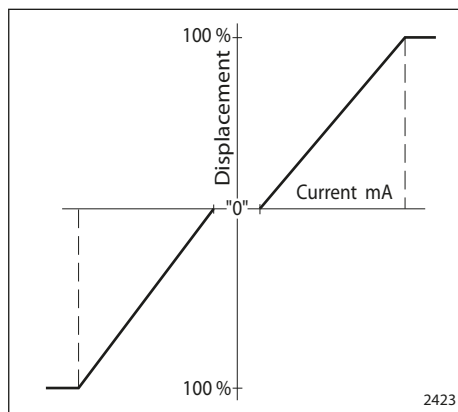
**Product overview**

**Theory of operation**

The electric displacement control uses an electrohydraulic Pressure Control Pilot (PCP) valve to control the pilot pressure. The PCP converts an electrical input signal to a hydraulic input signal to operate a 4-way servo valve, which ports hydraulic pressure to either side of a double acting servo piston. The servo piston tilts the cradle swashplate, thus varying the pump's displacement from full displacement in one direction to full displacement in the opposite direction.

The control has a mechanical feedback mechanism which moves the servo valve in relation to the input signal and the angular position of the swashplate. The electrical displacement control is designed so the angular rotation of the swashplate (pump displacement) is proportional to the electrical input signal. Due to normal operating force changes, the swashplate tends to drift from the position preset by the machine operator. Drift, sensed by feedback linkage system connecting the swashplate to the control valve, will activate the valve and supply pressure to the servo piston, maintaining the swashplate in its preset position.

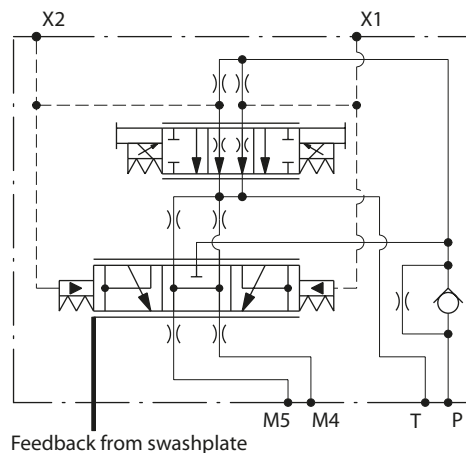
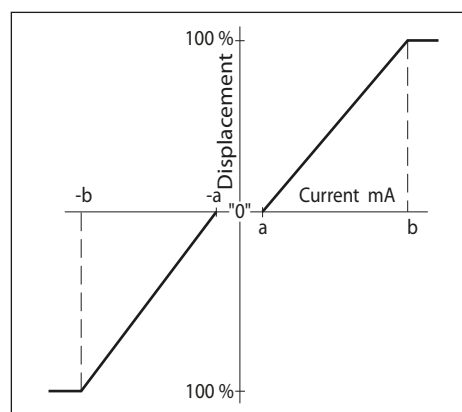
**Pump displacement versus control current**



**Hydrostatic drive line power**

**⚠ Warning**

Unintended vehicle or machine movement hazard. The loss of hydrostatic drive line power, in any mode of operation (forward, neutral, or reverse) may cause the system to lose hydrostatic braking capacity. You must provide a braking system, redundant to the hydrostatic transmission, sufficient to stop and hold the vehicle or machine in the event of hydrostatic drive power loss.

**Product overview**
**Hydraulic schematics**
*Electric Displacement Control schematic*

**Electrical specifications**
*Pump displacement versus threshold and end current*

*Specifications*

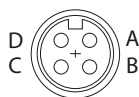
<b>Threshold current (-a, a)</b>	14 mA
<b>End current (-b, b)</b>	85 mA
<b>Maximum current</b>	100 mA
<b>Rated power</b>	18 W
<b>A - B Coil resistance at 24°C (75°F)</b>	20Ω
<b>C - D Coil resistance at 24°C (75°F)</b>	16Ω
<b>Recommended PWM frequency*</b>	200 Hz

\* Verify the PWM frequency is set correctly in the PLUS+1® controller. A PWM frequency of 200 Hz or higher is recommended, including the default frequency of 4000 Hz.

**Electrical installation**

**Pinout**

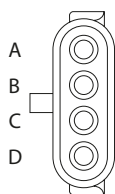
*Pin location*



*MS connector pinout*

	Function
A	PWM signal
B	Ground
C	Ground
D	PWM signal

*Pin location*



*Delphi Weather-Pack connector pinout*

Pin	Function
A	PWM signal
B	Ground
C	Ground
D	PWM signal

**Pin compatibility**

*PLUS+1® module pin type*

Pin	Function
A, D	PWMOUT/DOUT/PVG Power supply*
A, D	PWMOUT/DOUT/PVGOUT
B, C	Power ground-

\* Use output pins with configurable PWM frequency.

**Warning**

Unintended vehicle or machine movement hazard. Verify the wiring harness to ensure the correct PLUS +1® pin is properly connected to each control pin.



---

**Electrical Installation      S90 EDC**


---

**Electrical installation**
**S90 EDC input/output matrix**

<b>Input shaft rotation</b>	<b>Clockwise</b>		<b>Counterclockwise</b>	
<b>Positive current to term</b>	A	D	A	D
<b>Port A flow</b>	Out	In	In	Out
<b>Port B flow</b>	In	Out	Out	In
<b>Service cylinder</b>	M5	M4	M5	M4

**Mating connector**
*MS connector parts list*

<b>Description</b>	<b>Quantity</b>	<b>Ordering number</b>
MS connector	1	SG3108E-14S-2S-SR
Mating connector kit	1	Danfoss K08106

*Delphi Weather Pack connector parts list*

<b>Description</b>	<b>Quantity</b>	<b>Ordering number</b>
4 way black Weather Pack tower sealed female connector assembly	1	12015797
Female terminals (18 to 20 AWG)*	4	15408312
Cable seals (2.03 to 2.85 mm cable diameter)*	4	12015323
Mating connector kit	1	Danfoss K03384

\* Contact Delphi for proper components if using different wire size than listed.







**Products we offer:**

- Bent Axis Motors
- Closed Circuit Axial Piston Pumps and Motors
- Displays
- Electrohydraulic Power Steering
- Electrohydraulics
- Hydraulic Power Steering
- Integrated Systems
- Joysticks and Control Handles
- Microcontrollers and Software
- Open Circuit Axial Piston Pumps
- Orbital Motors
- PLUS+1® GUIDE
- Proportional Valves
- Sensors
- Steering
- Transit Mixer Drives

**Danfoss Power Solutions** is a global manufacturer and supplier of high-quality hydraulic and electronic components. We specialize in providing state-of-the-art technology and solutions that excel in the harsh operating conditions of the mobile off-highway market. Building on our extensive applications expertise, we work closely with our customers to ensure exceptional performance for a broad range of off-highway vehicles.

We help OEMs around the world speed up system development, reduce costs and bring vehicles to market faster.

Danfoss – Your Strongest Partner in Mobile Hydraulics.

**Go to [www.powersolutions.danfoss.com](http://www.powersolutions.danfoss.com) for further product information.**

Wherever off-highway vehicles are at work, so is Danfoss. We offer expert worldwide support for our customers, ensuring the best possible solutions for outstanding performance. And with an extensive network of Global Service Partners, we also provide comprehensive global service for all of our components.

Please contact the Danfoss Power Solution representative nearest you.

**Comatrol**

[www.comatrol.com](http://www.comatrol.com)

**Schwarzmueller-Inverter**

[www.schwarzmueller-inverter.com](http://www.schwarzmueller-inverter.com)

**Turolla**

[www.turollaocg.com](http://www.turollaocg.com)

**Hydro-Gear**

[www.hydro-gear.com](http://www.hydro-gear.com)

**Daikin-Sauer-Danfoss**

[www.daikin-sauer-danfoss.com](http://www.daikin-sauer-danfoss.com)

Local address:

**Danfoss Power Solutions (US) Company**  
2800 East 13th Street  
Ames, IA 50010, USA  
Phone: +1 515 239 6000

**Danfoss Power Solutions GmbH & Co. OHG**  
Krokamp 35  
D-24539 Neumünster, Germany  
Phone: +49 4321 871 0

**Danfoss Power Solutions ApS**  
Nordborgvej 81  
DK-6430 Nordborg, Denmark  
Phone: +45 7488 2222

**Danfoss Power Solutions Trading (Shanghai) Co., Ltd.**  
Building #22, No. 1000 Jin Hai Rd  
Jin Qiao, Pudong New District  
Shanghai, China 201206  
Phone: +86 21 3418 5200

Danfoss can accept no responsibility for possible errors in catalogues, brochures and other printed material. Danfoss reserves the right to alter its products without notice. This also applies to products already on order provided that such alterations can be made without changes being necessary in specifications already agreed. All trademarks in this material are property of the respective companies. Danfoss and the Danfoss logotype are trademarks of Danfoss A/S. All rights reserved.