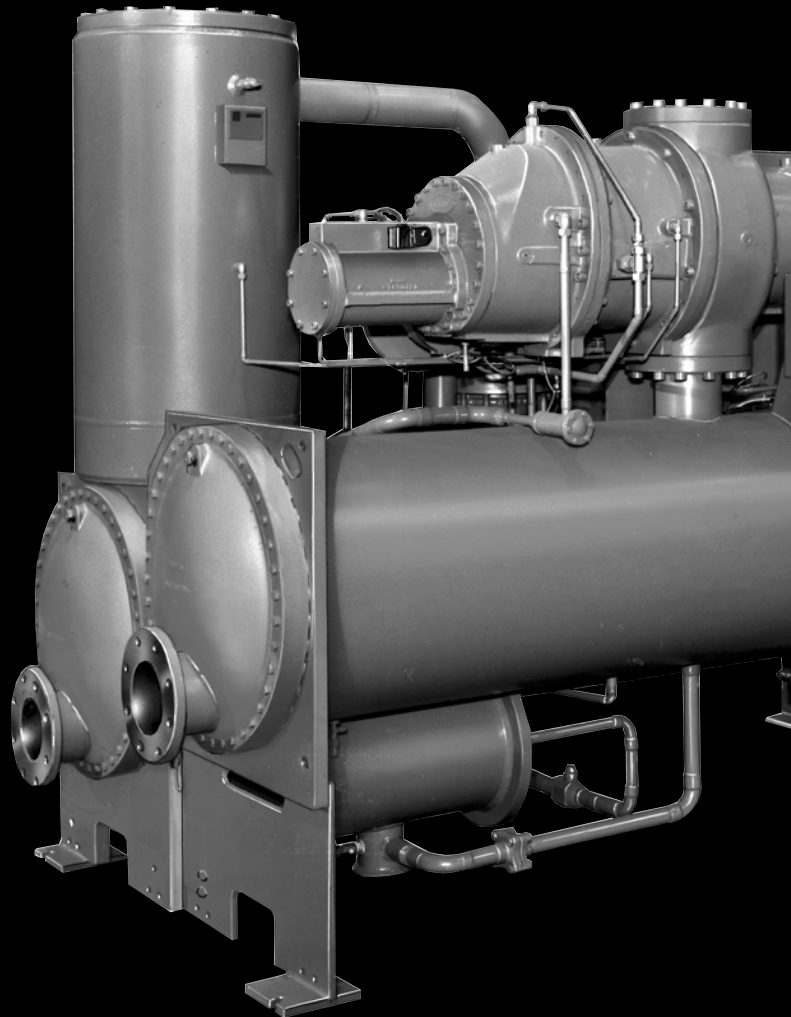
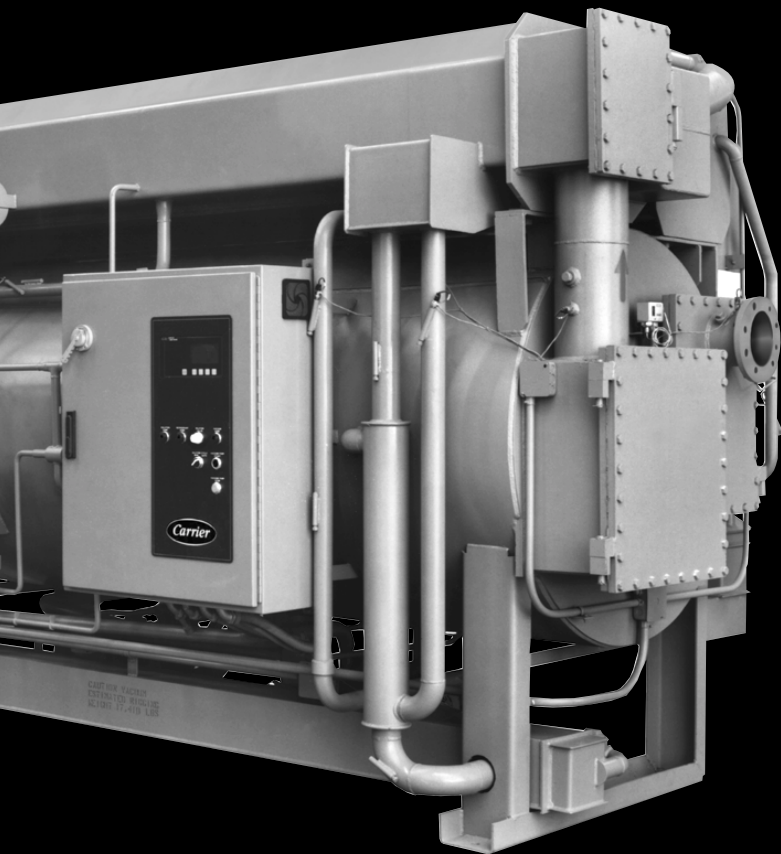
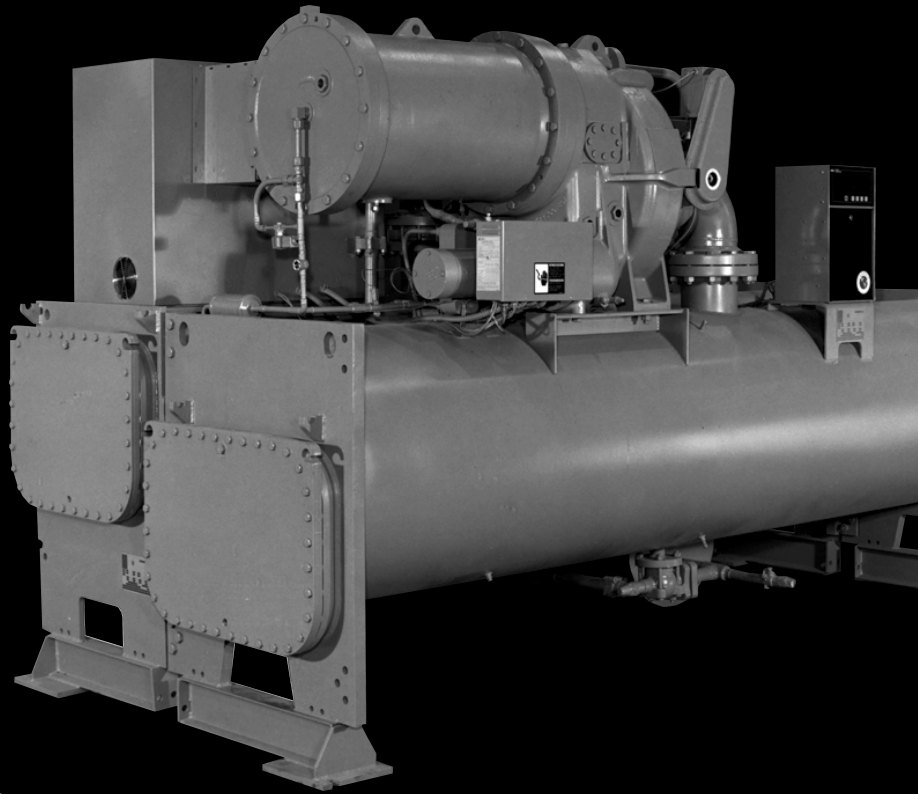




**SERVICE  
LITERATURE  
FOR  
CARRIER  
COMMERCIAL  
APPLIED  
PRODUCTS**



**Carrier**

A United Technologies Company

REPLACEMENT COMPONENTS DIVISION

# SERVICE LITERATURE FOR CARRIER COMMERCIAL APPLIED PRODUCTS

This catalog contains a list of service literature related to Carrier absorption and centrifugal products.

For prompt handling of your order, please observe the following:

- Give complete "Sold To" information. Be sure to include street address - **not P.O. Box**.
- Include customer purchase order number (if order is to be billed), order date and any "Mark For" information you require on the shipping label.
- List each item separately by catalog number.
- List quantity of each item, the unit price and the total price. Be sure to include any applicable sales tax at the bottom of the order form.
- If an item is out of stock, it will be backordered and shipped as soon as available.

In addition, the following terms and conditions apply to all orders:

- Prices and offerings are subject to change without prior notice.
- Where items are padded, or packaged in quantities as noted, minimum order is one pad or package and total quantity ordered must be in multiples of the packaging unit. WE CANNOT SPLIT PACKAGES.
- All sales are final.
- **No telephone orders will be accepted.**
- Minimum billing is \$35.00.
- Purchase orders will be accepted for billing from established Carrier open account customers.
- **No C.O.D. orders will be accepted.**
- Please include your customer code in the customer account number block.
- Be sure to mail order to correct address as noted below and on order form.
- Freight will be prepaid and billed for airfreight shipments.

## ORDERING INSTRUCTIONS:

Please include your purchase order number, check, money order or VISA/MasterCard number and expiration date. Make checks payable as requested on the order form. Do not send cash. Purchase order and credit card orders can be faxed to (315) 432-3418.

**Note:** Minimum billing: \$35.00.



In accordance with your state sales tax laws and regulations, Carrier is obligated to charge sales tax on literature sales to you and/or your company unless your company provides us with a properly executed exemption certificate. Please include your state/local sales tax with your order, or enclose your tax exemption certificate.

Carrier Corporation  
Literature Services, Bldg. TR-2  
P.O. Box 4802  
Syracuse, New York 13221-4802

**TABLE  
OF  
CONTENTS**

**SERVICE MANUALS**

Installation, Start-Up, Operating & Maintenance and  
Specified Parts for:

	<b>PAGE</b>
ABSORPTION LIQUID CHILLERS .....	1, 2
OPEN DRIVE CENTRIFUGAL LIQUID CHILLERS .....	3, 4
HERMETIC CENTRIFUGAL LIQUID CHILLERS .....	5-8
HERMETIC SCREW COMPRESSOR LIQUID CHILLERS .....	9
REFRIGERANT RECOVERY & RECYCLING PRODUCTS .....	10
32MP MICROPROCESSOR CONTROLS .....	11
32SM SENSOR MODULE CONTROLS .....	11

**SERVICE BULLETINS**

ABSORPTION LIQUID CHILLERS .....	12-15
OPEN DRIVE CENTRIFUGAL LIQUID CHILLERS .....	16-19
HERMETIC CENTRIFUGAL LIQUID CHILLERS .....	20-29
HERMETIC SCREW CENTRIFUGAL LIQUID CHILLERS .....	30-32

**CHARTS AND LOG SHEETS**

LITHIUM BROMIDE EQUILIBRIUM CHART .....	32
REFRIGERATION LOG SHEETS .....	32

**TRAINING MATERIAL**

PACKAGED SERVICE TRAINING PROGRAMS .....	33
--	----

**CD ROM**

EPIC (ELECTRONIC PARTS INFORMATION CATALOG) .....	34
---	----

**MISCELLANEOUS**

BINDERS .....	34
---------------	----

**ORDER FORMS**

LITERATURE ORDER FORM .....	35,37
-----------------------------	-------

# ABSORPTION LIQUID CHILLERS

<p><b>SERVICE MANUALS &amp; PARTS LIST</b></p>
--

MODEL	DESCRIPTION	ORDERING NUMBER	PRICE PER COPY
16B	SPECIFIED PARTS CATALOG	551-619	\$ 6.50
16C	OPERATING & MAINTENANCE INSTRUCTIONS	R-591-607	11.00
16C	SPECIFIED PARTS CATALOG	551-622	8.00
16DF	INSTALLATION INSTRUCTIONS (SIZES 013-050)	R-531-602	6.00
16DF	START-UP, OPERATING & MAINTENANCE INSTRUCTIONS (SIZES 013-050)	R-531-603	10.00
16DF	SPECIFIED PARTS CATALOG	RCD-3516-006	7.00
16E	OPERATING & MAINTENANCE INSTRUCTIONS	R-591-632	11.00
16E	SPECIFIED PARTS CATALOG	551-620	8.00
16HA	START-UP INSTRUCTIONS	R-591-624	7.00
16HA	OPERATING & MAINTENANCE INSTRUCTIONS	R-591-623	11.00
16HA	SPECIFIED PARTS CATALOG	551-617	7.00
16JA	INSTALLATION INSTRUCTIONS	R-531-645	5.00
16JA	START-UP INSTRUCTIONS	R-591-604	6.00
16JA	OPERATING & MAINTENANCE INSTRUCTIONS	R-531-647	6.00
16JA	SPECIFIED PARTS CATALOG (SIZES 010-068)	551-618	11.00
16JA	SPECIFIED PARTS CATALOG (SIZES 077-124)	551-624	8.00
16JB	INSTALLATION INSTRUCTIONS	R-531-601	5.00
16JB	START-UP, OPERATING & MAINTENANCE INSTRUCTIONS (SIZES 010-068)	R-531-600	8.00
16JB	START-UP, OPERATING & MAINTENANCE WITH PIC CONTROLS (010-068)	R-531-614	16.00
16JB	START-UP, OPERATING & MAINTENANCE INSTRUCTIONS (SIZES 010-124)	R-531-654	8.50
16JB	SPECIFIED PARTS CATALOG (SIZES 010-068)	RCD-3516-007 REV A	10.00
16JB	SPECIFIED PARTS CATALOG (SIZES 077-124)	R-551-621	7.00

**SERVICE  
MANUALS  
&  
PARTS LIST**

**ABSORPTION  
LIQUID CHILLERS**

<b>MODEL</b>	<b>DESCRIPTION</b>	<b>ORDERING NUMBER</b>	<b>PRICE PER COPY</b>
16JT	INSTALLATION INSTRUCTIONS	R-531-611	\$ 6.00
16JT	START-UP, OPERATING & MAINTENANCE INSTRUCTIONS	R-531-607	9.00
16JT	START-UP, OPERATING & MAINTENANCE INSTRUCTIONS (WITH PIC CONTROLS)	R-531-610	16.00
16JT	SPECIFIED PARTS CATALOG (080-150)	RCD-3516-004-REV-A	9.00
16JT	SPECIFIED PARTS CATALOG (810-880)	RCD-3516-005-REV-A	9.00
COMPLETE SET OF SERVICE MANUALS AND PARTS LISTS FOR ABSORPTION LIQUID CHILLERS IN A POST TYPE BINDER		ABS-SL-1007	220.00

# OPEN DRIVE CENTRIFUGAL LIQUID CHILLERS

## SERVICE MANUALS & PARTS LIST

MODEL	DESCRIPTION	ORDERING NUMBER	PRICE PER COPY
17CA	START-UP INSTRUCTIONS	R-591-725	\$ 6.50
17CA	OPERATING & MAINTENANCE INSTRUCTIONS	R-531-717	9.00
17CA	SPECIFIED PARTS CATALOG	551-720	8.50
17CB	INSTALLATION INSTRUCTIONS	R-531-735	6.00
17CB	START-UP INSTRUCTIONS	R-531-740	6.50
17CB	OPERATING & MAINTENANCE INSTRUCTIONS	R-531-743	8.50
17CB	SPECIFIED PARTS CATALOG	551-718	8.00
17DA	INSTALLATION INSTRUCTIONS	R-531-732	5.00
17DA	START-UP INSTRUCTIONS	R-531-733	5.00
17DA	OPERATING & MAINTENANCE INSTRUCTIONS	R-531-742	6.50
17DA	SPECIFIED PARTS CATALOG	551-716	8.00
17DK/DM	INSTALLATION INSTRUCTIONS	R-531-701	5.00
17DK	START-UP, OPERATING & MAINTENANCE INSTRUCTIONS	R-531-708	8.00
17DK	SPECIFIED PARTS CATALOG	17.001	8.00
17DM	START-UP, OPERATING & MAINTENANCE INSTRUCTIONS	R-531-707	8.00
17DM	SPECIFIED PARTS CATALOG (WITH MICROPROCESSOR CONTROL SYSTEM)	17.002	8.00
17DR	INSTALLATION INSTRUCTIONS	R-531-706	5.00
17DR	START-UP, OPERATION & MAINTENANCE INSTRUCTIONS (WITH DM COMPRESSORS)	R-531-704	9.00
17DR	START-UP, OPERATION & MAINTENANCE INSTRUCTIONS (WITH DK COMPRESSORS)	R-531-713	9.00
17DR	SPECIFIED PARTS CATALOG (WITH MICROPROCESSOR CONTROL SYSTEM)	17.020	8.00

**SERVICE  
MANUALS  
&  
PARTS LIST**

# OPEN DRIVE CENTRIFUGAL LIQUID CHILLERS

MODEL	DESCRIPTION	ORDERING NUMBER	PRICE PER COPY
17EX	INSTALLATION INSTRUCTIONS	R-531-749	\$ 8.00
17EX	INSTALLATION INSTRUCTIONS (EXTERNAL GEAR)	R-531-722	8.00
17EX	START-UP, OPERATING & MAINTENANCE INSTRUCTIONS (R-134)	R-531-750	15.00
17EX	START-UP, OPERATING & MAINTENANCE INSTRUCTIONS (EXTERNAL GEAR)	R-531-721	17.00
17EX	SPECIFIED PARTS CATALOG (FRAME 5)	RCD-3517-021	7.50
17EX	SPECIFIED PARTS CATALOG (EXTERNAL GEAR)	RCD-3517-025	7.00
17F	SPECIFIED PARTS CATALOG	551-717	9.50
17FA	INSTALLATION INSTRUCTIONS (R-12 & R-500)	R-531-730	5.00
17FA	INSTALLATION INSTRUCTIONS (R-22)	R-531-712	6.50
17FA	START-UP, OPERATING & MAINTENANCE INSTRUCTIONS (R-12 & R-500)	R-531-741	10.00
17FA	START-UP, OPERATING & MAINTENANCE INSTRUCTIONS (R-22)	R-531-714	10.00
17FA	SPECIFIED PARTS CATALOG	RCD-3517-031	8.50
17M	INSTALLATION INSTRUCTIONS (17MPS/FA)	R-531-744	6.50
17M	START-UP INSTRUCTIONS (17MPS/FA)	R-531-736	7.00
17M	OPERATING & MAINTENANCE INSTRUCTIONS 17M,P	R-531-738	8.00
17M	OPERATING & MAINTENANCE INSTRUCTIONS 17MA, PA, SA (SIZE 30) CONTACT SEAL COMPRESSORS	R-531-737	8.00
17M	OPERATING & MAINTENANCE INSTRUCTIONS 17MA,PA, SA (SIZE 40) CONTACT SEAL COMPRESSORS	R-531-734	7.00
17M	SPECIFIED PARTS CATALOG	551-719	10.00
COMPLETE SET OF SERVICE MANUALS AND PARTS LISTS FOR OPEN DRIVE CENTRIFUGAL LIQUID CHILLERS IN A POST TYPE BINDER		ODC-SL-1008	290.00

# HERMETIC CENTRIFUGAL LIQUID CHILLERS

**SERVICE  
MANUALS  
&  
PARTS LIST**

MODEL	DESCRIPTION	ORDERING NUMBER	PRICE PER COPY
19C	START-UP INSTRUCTIONS	R-531-902	\$ 7.00
19C	OPERATING & MAINTENANCE INSTRUCTIONS	R-591-922	7.00
19C	SPECIFIED PARTS CATALOG, I	551-908	9.00
19C	SPECIFIED PARTS CATALOG, II	551-910	10.00
19C	SPECIFIED PARTS CATALOG, III	551-914	10.00
19CB	INSTALLATION INSTRUCTIONS	R-531-941	5.00
19CB	START-UP, OPERATING & MAINTENANCE INSTRUCTIONS	R-531-909	9.00
19CB	SPECIFIED PARTS CATALOG	551-918	8.00
19D	START-UP INSTRUCTIONS	R-591-927	6.50
19D	OPERATING & MAINTENANCE INSTRUCTIONS	R-531-916	11.00
19D	SPECIFIED PARTS CATALOG (SUPERSEDES R-551-912)	19.025	7.00
19DA	START-UP INSTRUCTIONS	R-591-912	6.00
19DA	OPERATING & MAINTENANCE INSTRUCTIONS	R-591-920	8.50
19DA	SPECIFIED PARTS CATALOG (SUPERSEDES R-551-913)	19.026	7.00
19DG	START-UP, OPERATING & MAINTENANCE INSTRUCTIONS	R-531-907	8.00
19DG	SPECIFIED PARTS CATALOG (SUPERSEDES R-551-920)	19.023	7.50
19DH	INSTALLATION INSTRUCTIONS	R-591-939	5.00
19DH	START-UP, OPERATING & MAINTENANCE INSTRUCTIONS	R-531-956	7.50
19DH	SPECIFIED PARTS CATALOG (SUPERSEDES R-551-916)	19.022	7.00



**SERVICE  
MANUALS  
&  
PARTS LIST**

# HERMETIC CENTRIFUGAL LIQUID CHILLERS

MODEL	DESCRIPTION	ORDERING NUMBER	PRICE PER COPY
19DK	INSTALLATION INSTRUCTIONS	R-531-957	\$ 5.00
19DK	START-UP, OPERATING & MAINTENANCE INSTRUCTIONS	R-591-907	8.00
19DK	START-UP, OPERATING & MAINTENANCE INSTRUCTIONS (WITH MICROPROCESSOR CONTROL SYSTEM)	R-531-919	8.00
19DK	SPECIFIED PARTS CATALOG WITH OR WITHOUT MICROPROCESSOR CONTROL SYSTEM (SUPERSEDES R-19.012 & R-19.014)	19.018	7.50
19DM	INSTALLATION INSTRUCTIONS	R-531-958	5.00
19DM	START-UP, OPERATING & MAINTENANCE INSTRUCTIONS	R-531-959	8.00
19DM	START-UP, OPERATING & MAINTENANCE INSTRUCTIONS (WITH MICROPROCESSOR CONTROL SYSTEM)	R-531-962	8.50
19DM	SPECIFIED PARTS CATALOG WITH OR WITHOUT MICROPROCESSOR CONTROL SYSTEM (SUPERSEDES R-19.013 & R-19.016)	19.019	8.00
19DR	INSTALLATION INSTRUCTIONS	R-531-911	5.00
19DR	START-UP, OPERATING & MAINTENANCE INSTRUCTIONS (WITH DM COMPRESSOR AND MICROPROCESSOR CONTROL SYSTEM)	R-531-926	9.50
19DR	START-UP, OPERATING & MAINTENANCE INSTRUCTIONS (WITH DK COMPRESSOR AND MICROPROCESSOR CONTROL SYSTEM)	R-531-928	9.00
19DR	SPECIFIED PARTS CATALOG (WITH MICROPROCESSOR CONTROL SYSTEM)	19.027	8.00
19EA 4&5	START-UP, OPERATING & MAINTENANCE INSTRUCTIONS	R-531-901	9.00
19EA	SPECIFIED PARTS CATALOG (SUPERSEDES 551-917)	RCD-3519-055	8.00
19EB	INSTALLATION INSTRUCTIONS	R-531-905	5.00
19EB	START-UP, OPERATING & MAINTENANCE INSTRUCTIONS (SUPERSEDES 531-903)	R-531-910	9.00
19EB	SPECIFIED PARTS CATALOG (SUPERSEDES 19.010 & 19.011)	RCD-3519-056	8.00

# HERMETIC CENTRIFUGAL LIQUID CHILLERS

## SERVICE MANUALS & PARTS LIST

MODEL	DESCRIPTION	ORDERING NUMBER	PRICE PER COPY
19EF	INSTALLATION INSTRUCTIONS (MICROPROCESSOR)	R-531-935	\$ 5.00
19EF	INSTALLATION INSTRUCTIONS (PIC CONTROLS)	R-531-966	6.50
19EF	START-UP, OPERATING & MAINTENANCE INSTRUCTIONS (32SM CONTROLS)	R-531-908	9.00
19EF	START-UP, OPERATING & MAINTENANCE INSTRUCTIONS (MICROPROCESSOR)	R-531-936	9.00
19EF	START-UP, OPERATING & MAINTENANCE INSTRUCTIONS (PIC CONTROLS)	R-531-968	12.00
19EF	SPECIFIED PARTS CATALOG	19.005	8.50
19EX	INSTALLATION INSTRUCTIONS	R-531-749	8.00
19EX	START-UP, OPERATING & MAINTENANCE INSTRUCTIONS	R-531-750	15.00
19EX	SPECIFIED PARTS CATALOG	RCD-3519-047	8.00
19FA	INSTALLATION INSTRUCTIONS	R-531-904	5.00
19FA	START-UP, OPERATING & MAINTENANCE INSTRUCTIONS	R-531-948	9.50
19FA	SPECIFIED PARTS CATALOG	RCD-3519-060	9.00
19HR	INSTALLATION INSTRUCTIONS	R-591-908	5.00
19HR	START-UP, OPERATING & MAINTENANCE INSTRUCTIONS	R-531-924	9.00
19HR	SPECIFIED PARTS CATALOG	19.001	8.00
19XL	INSTALLATION INSTRUCTIONS	R-531-931	6.50
19XL	INSTALLATION INSTRUCTIONS (FOR UNITS PRODUCED AFTER 11/1/92 - LINEAR FLOAT DESIGN)	R-531-972	7.00
19XL	START-UP, OPERATING & MAINTENANCE INSTRUCTIONS	R-531-971	16.00
19XL	SPECIFIED PARTS CATALOG	RCD-3519-057	7.50

**SERVICE  
MANUALS  
&  
PARTS LIST**

# HERMETIC CENTRIFUGAL LIQUID CHILLERS

MODEL	DESCRIPTION	ORDERING NUMBER	PRICE PER COPY
19XR	INSTALLATION INSTRUCTIONS (R-134A)	R-531-940	\$ 8.50
19XR	INSTALLATION INSTRUCTIONS (PIC II CONTROLS)	R-531-981	10.00
19XR	START-UP, OPERATING & MAINTENANCE INSTRUCTIONS (R-134A)	R-531-955	16.00
19XR	START-UP, OPERATING & MAINTENANCE INSTRUCTIONS (PIC II CONTROLS)	R-531-982	17.00
19XR	SPECIFIED PARTS CATALOG	RCD-3519-061	16.00
19XRT	INSTALLATION INSTRUCTIONS	R-531-950	7.50
19XRT	INSTALLATION INSTRUCTIONS (PIC II CONTROLS)	R-531-976	8.00
19XRT	START-UP, OPERATING & MAINTENANCE INSTRUCTIONS (R-134A)	R-531-952	13.00
19XRT	START-UP, OPERATING & MAINTENANCE INSTRUCTIONS (PIC II CONTROLS)	R-531-977	16.00
19XRT	SPECIFIED PARTS CATALOG	RCD-3519-044 REV A	7.00
19XT	INSTALLATION INSTRUCTIONS	R-531-969	7.50
19XT	START-UP, OPERATING & MAINTENANCE INSTRUCTIONS (R-134A)	R-531-970	15.00
19XT	SPECIFIED PARTS CATALOG	RCD-3519-034 REV A	7.50
COMPLETE SET OF SERVICE MANUALS AND PARTS LISTS FOR HIGH PRESSURE REFRIGERANT HERMETIC CENTRIFUGAL LIQUID CHILLERS IN A POST BINDER. MACHINE MODELS INCLUDED ARE 19EA, 19EB, 19EF, 19EX, 19FA, 19XL, 19XR, 19XRT AND 19XT		570-650	310.00
COMPLETE SET OF SERVICE MANUALS AND PARTS LIST FOR LOW PRESSURE REFRIGERANT HERMETIC CENTRIFUGAL LIQUID CHILLERS IN A POST BINDER. MACHINE MODELS INCLUDED ARE 19C, 19CB, 19D, 19DA, 19DG, 19DH, 19DK, 19DM, 19DR AND 19HR		570-651	245.00

# HERMETIC SCREW COMPRESSOR LIQUID CHILLERS

**SERVICE  
MANUALS  
&  
PARTS LIST**

MODEL	DESCRIPTION	ORDERING NUMBER	PRICE PER COPY
23XL	INSTALLATION INSTRUCTIONS	R-532-303	\$ 8.50
23XL	START-UP, OPERATING & MAINTENANCE INSTRUCTIONS	R-532-302	15.00
23XL	SPECIFIED PARTS CATALOG-(INGERSOLL COMPR) (SUPERSEDES RCD-3523-002 & 003)	RCD-3523-004	8.00
23XL	SPECIFIED PARTS CATALOG (HOWDEN COMPR)	RCD-3523-005	7.00
23XL	START-UP, OPERATING & MAINTENANCE INSTRUCTIONS (PIC II CONTROLS)	R-532-306	16.00

**SERVICE  
MANUALS  
&  
PARTS LIST**

# REFRIGERANT RECOVERY & RECYCLING PRODUCTS

MODEL	DESCRIPTION	ORDERING NUMBER	PRICE PER COPY
19DK	PREVENT I HI-EFFICIENCY PURGE SPECIFIED PARTS CATALOG	19.021	\$ 5.00
19DK	PREVENT II HI-EFFICIENCY PURGE SPECIFIED PARTS CATALOG	RCD-3519-045	5.00
19DK	PREVENT I INSTALLATION, OPERATING & MAINTENANCE INSTRUCTIONS	R-531-934	6.50
19DK	PREVENT II INSTALLATION, OPERATING & MAINTENANCE INSTRUCTIONS	R-531-964	6.00
19QA	RMS SPECIFIED PARTS CATALOG (DESIGN 1)	19.020	5.00
19QA	RMS SPECIFIED PARTS CATALOG (DESIGN 2)	19.030	5.00
19QA	INSTALLATION, OPERATING & MAINTENANCE INSTRUCTIONS (R-11, R-113 & R-123) (DESIGN 1)	R-531-932	5.00
19QA	INSTALLATION, OPERATING & MAINTENANCE INSTRUCTIONS (R-11, R-113 & R-123) (DESIGN 2)	R-531-963	6.50
19XB	POSITIVE PRESSURE STORAGE SYSTEM & PUMP DOWN UNIT SPECIFIED PARTS CATALOG	19.024	5.00
19XB	INSTALLATION, OPERATING & MAINTENANCE INSTRUCTIONS (POSITIVE PRESSURE STORAGE SYST)	R-531-927	6.50

# 32MP MICROPROCESSOR

**CONTROL  
MANUALS  
&  
INSTRUCTS.**

MODEL	DESCRIPTION	ORDERING NUMBER	PRICE PER COPY
3200MP	EXPANDED SERVICES PANEL OPTIONS PACKAGE INSTALLATION INSTRUCTIONS (LOCALLY MOUNTED ESP USED WITH 3200MP MICROPROCESSOR CHILLER CONTROLS)	R-533-205	\$ 5.00
3200MP	EXPANDED SERVICES PANEL OPTIONS PACKAGE INSTALLATION INSTRUCTIONS (REMOTE-MOUNTED ESP USED WITH 3200MP MICROPROCESSOR CHILLER CONTROLS)	R-533-212	5.00
32MP	MICROPROCESSOR CONTROL • FAMILIARIZATION • OPERATING SEQUENCES	021 -022	SEE NOTE
32MP	MICROPROCESSOR CONTROL • START-UP • TROUBLESHOOTING	021-024	SEE NOTE
3200MP	EXPANDED SERVICES PANEL II START-UP, OPERATION AND MAINTENANCE INSTRUCTIONS	R-533-211	8.00
3200MP	CONTROLS RETROKIT INSTALLATION INSTRUCTIONS	R-571-103	7.00
3200MP	MICROPROCESSOR CONTROLS FOR CENTRIFUGAL CHILLERS START-UP, OPERATION AND MAINTENANCE INSTRUCTIONS	R-808-009	6.50
PIC	PIC RETROFIT KIT - R134a START-UP, OPERATION AND MAINTENANCE INSTRUCTIONS	R-531-724	13.00

# 32SM SENSOR MODULE

**CONTROL  
MANUALS  
&  
INSTRUCTS.**

32SM	CENTRIFUGAL CONTROL - DESIGN TWO CONTROL SEQUENCE BUILD-UP PROGRAM TIMER SEQUENCE SAFETY CIRCUITS	021-028	SEE NOTE
------	--	---------	----------

NOTE: CATALOG NUMBERS 021-022, 021-024 AND 021-028 ABOVE ARE AVAILABLE THROUGH OUR SERVICE TRAINING DEPARTMENT ONLY. SEE PAGE 33 FOR DETAILS ON HOW TO OBTAIN A FREE PACKAGED SERVICE TRAINING CATALOG. YOU MAY ALSO CALL 800-644-5544 FOR MORE INFORMATION.

**SERVICE  
BULLETINS**

**ABSORPTION  
LIQUID CHILLERS**

<b>SUBJECT/DESCRIPTION</b>	<b>DATE</b>	<b>ORDERING NUMBER</b>	<b>PRICE PER COPY</b>
16 SERIES SERVICE BULLETIN INDEX	1/30/01	CA-SB-16-I-01-1	\$ .75
16C SOLUTION & EVAPORATOR WATER CHARGES	10/19/59	CA-SB-16-C-59-2	.50
VERTICAL PURGE REPAIR: SAFETY INSTRUCTIONS	10/1/63	CA-SB-16-H-63-3	.25
PRE-STRESSING GENERATOR TUBES	12/2/64	CA-SB-16-C-64-4	.75
16JA ELECTRONIC & PNEUMATIC ACTUATED CONTROL VALVES	10/5/67	CA-SB-16-J-67-5	1.25
16JA SOLENOID VALVE DISASSEMBLY	10/12/67	CA-SB-16-J-67-6	.50
16HA ABSORBER PUMP DISCHARGE PRESSURE	3/14/68	CA-SB-16-H-68-7	.75
ATTACHMENT OF DIAPHRAGM & SOLENOID VALVES	4/11/69	CA-SB-16-J-69-8	.25
16JA SOLUTION & REFRIGERANT TRANSFER & STORAGE	8/29/69	CA-SB-16-J-69-9	.75
PURGE NON-CONDENSABLE FEEDBACK	9/12/69	CA-SB-16-J-69-10	.75
SAFETY PRECAUTIONS-DISPOSABLE REFRIGERANT CYLINDERS	1/9/70	CA-SB-16-C-70-11	.50
HERMETIC PUMP STATOR INSULATION	2/13/70	CA-SB-16-C-70-12	.50
HERMETIC PUMP STATOR REMOVAL	2/13/70	CA-SB-16-J-70-13	.25
REED SWITCH LOADING LIMITATIONS	11/20/70	CA-SB-16-J-70-14	.25
LOW TEMPERATURE CUTOFF SWITCH	3/12/71	CA-SB-16-C-71-15	.25
ADJUSTMENTS FOR SYNCHRONOUS CAPACITY CONTROL VALVE OPERATION-DOUBLE ENDED MACHINE	6/18/71	CA-SB-16-J-71-16	.75
ELECTRONIC CONTROL VALVES MOTOR	10/15/71	CA-CB-16-J-71-17	1.25
DIAPHRAGM VALVE	9/8/72	CA-SB-16-C-72-18	.50
16JA/JB REFRIGERANT & SOLUTION PUMP DISCHARGE PRESSURE	6/22/72	CA-SB-16-J-73-19	1.50
16JA WIRING DIAGRAMS	3/8/74	CA-SB-16-J-74-20	4.25
16JB WIRING DIAGRAMS	3/8/74	CA-SB-16-J-74-21	5.25
16JB REFRIGERANT CHARGE ADJUSTMENT	4/12/74	CA-SB-16-J-74-22	.25

# ABSORPTION LIQUID CHILLERS

## SERVICE BULLETINS

SUBJECT/DESCRIPTION	DATE	ORDERING NUMBER	PRICE PER COPY
LI BR SOLUTION ANALYSIS SAMPLES	4/19/74	CA-SB-16-C-74-23	\$.50
16JB WIRING DIAGRAMS CONVERSION TO LLC	9/13/74	CA-SB-16-J-74-24	4.25
TEMPERATURE MEASUREMENT- 16JA, JB	9/6/74	CA-SB-16-J-74-25	.25
16JB CYCLE GUARD VALVE	12/6/74	CA-SB-16-J-74-26	.50
MANUAL DIAPHRAGM	8/1/75	CA-SB-16-C-75-27	.25
16JB FLOTENDER VALVE	8/1/75	CA-SB-16-J-75-28	.50
16JB STRONG SOLUTION OVERFLOW	1/26/76	CA-SB-16-J-76-29	.25
PUMP GASKET LEAKS	1/30/76	CA-SB-16-J-76-30	.50
DETERMINE AMOUNT OF 53% LI BR SOLUTION IN STORAGE DRUMS	1/30/76	CA-SB-16-C-76-31	.50
BUTTERFLY STEAM VALVE ADJUSTMENT	4/5/76	CA-SB-16-C-76-32	.25
REPLACEMENT MOTORS FOR HERMETIC PUMPS	5/7/76	CA-SB-16-E-76-33	.25
GENERAL CONTROLS PURGE VALVE ACTUATOR CALIBRATION	5/24/76	CA-SB-16-C-76-34	1.25
PNEUMATIC CONTROL AIR LEAKS	7/21/76	CA-SB-16-C-76-35	.25
SOLUTION CONTROL VALVE DRAWINGS	12/14/76	CA-SB-16-E-76-36	1.25
TYPICAL TORQUE VALUES FOR 16 SERIES E.P. RUBBER GASKETS & VALVE DIAPHRAGMS	12/15/76	CA-SB-16-C-76-37	.50
PLUGGED GENERATOR TUBES - SOLUTION CONTROL	12/15/76	CA-SB-16-E-76-38	.50
OXYGEN CORROSION PROTECTION: 16 SERIES MACHINES	12/15/76	CA-SB-16-J-76-40	.50
SOLUTION QUANTITIES BELOW 16JA/JB SERVICE VALVES	12/16/76	CA-SB-16-J-76-41	.50
EVACUATION TUBING	12/16/76	CA-SB-16-C-76-42	.25
PURGE PRONG LOCATIONS	12/16/76	CA-SB-16-C-76-43	.50
JET PURGE PUMP	12/16/76	CA-SB-16-C-76-44	.25



## SERVICE BULLETINS

# ABSORPTION LIQUID CHILLERS

SUBJECT/DESCRIPTION	DATE	ORDERING NUMBER	PRICE PER COPY
16JA PURGE EXHAUST PROBLEMS	12/16/76	CA-SB-16-C-76-45	\$ .50
RUNNING VACUUM TEST	12/16/76	CA-SB-16-C-76-46	.50
LEAK TEST PROCEDURE FOR SOLUTION CONTROL VALVE BELLOWS	12/23/76	CA-SB-16-E-76-47	.25
R-12 CONCENTRATIONS FOR LEAK TESTING	12/23/76	CA-SB-16-C-76-48	.50
ABSORPTION WATER BOX COVER WEIGHTS	12/23/76	CA-SB-16-C-76-49	1.00
16JA & JB OVERLOAD HEATER & FUSE SELECTIONS	12/23/76	CA-SB-16-J-76-50	1.00
16JA & JB OVERLOAD HEATER PROBLEMS AND FURNAS TRI-BLOCK INSTALLATION INSTRUCTIONS	12/23/76	CA-SB-16-J-76-51	.75
16JB WIRING DIAGRAMS	3/11/77	CA-SB-16-J-77-52	.75
VAPOR CONDENSATE VALVE ELIMINATION	7/15/77	CA-SB-16-C-77-53	.25
16C WIRING CHANGES	7/15/77	CA-SB-16-C-77-54	1.00
PNEUMATIC CONTROL SYSTEM, OPERATING & MAINTENANCE INSTRUCTIONS	7/15/77	CA-SB-16-C-77-55	2.50
PURGE UNIT LOW LEVEL PROBE AND HIGH LEVEL CUTOFF FLOAT	7/15/77	CA-SB-16-C-77-56	.25
COOLING TOWER PROTECTION	10/3/77	CA-SB-16-C-77-57	.25
REPLACEMENT HERMETIC PUMPS AND MOTORS	10/3/77	CA-SB-16-C-77-58	1.00
16JA/JB REFRIGERANT AND SOLUTION PUMPS AND MOTORS	10/10/77	CA-SB-16-J-77-59	1.25
HONEYWELL PILOT POSITIONER	10/10/77	CA-SB-16-C-77-60	.75
16JB CYCLE GUARD REED SWITCH ASSEMBLY	10/31/77	CA-SB-16-J-77-61	.50
SPRAY HEADER ASSEMBLY	1/6/82	CA-SB-16-C-82-62	.25
ELECTRONIC CAPACITY CONTROL (CONVERTING HONEYWELL TO BARBER-COLEMAN MOTOR)	5/15/85	CA-SB-16-J-85-63	1.00
R-22 CONCENTRATIONS FOR LEAK TESTING	7/25/88	CA-SB-16-J-88-64	.50

# ABSORPTION LIQUID CHILLERS



SUBJECT/DESCRIPTION	DATE	ORDERING NUMBER	PRICE PER COPY
SOLUTION PUMP MOTORS	5/5/89	CA-SB-16-J-89-65	\$ .25
CFC CONSERVATION LEAK TESTING	7/10/92	A9201	.50
16JB LEVEL SWITCH IDENTIFICATION	8/10/92	A9205	1.25
16JA/JB/JT REFRIGERANT CHARGE	11/18/92	A9207	.25
16JA/JB REFRIGERANT CONDENSATE ORIFICE	3/12/93	A9302	.50
CURRENT 16JA/JB PUMP MOTORS	3/16/93	A9303	1.25
16JA/JB HERMETIC PUMP & MOTOR DATA (SUPERSEDES R-A9102)	7/7/93	A9304	2.00
16JB SOLENOID VALVE ISOLATION	7/9/93	A9305	.25
16JB SOLENOID VALVE REPAIR KITS	7/22/93	A9306	.25
ELECTRIC CONTROL REPLACEMENT PARTS (16E,16HA,16JA,16JB)	11/23/93	A9307	.50
ELECTRONIC CAPACITY CONTROL (16E,16HA,16JA,16JB)	12/8/93	A9308	2.00
REFRIGERANT WATER SPECIFICATION	6/28/95	A9503	.50
HYDROBROMIC ACID (SUPERSEDES R-A9003)	8/24/95	A9504	.75
DIVISION PLATE GASKETS	6/5/96	C9615	.50
DI WATER FOR SERVICE WORK	1/5/98	A9802	.25
16DF E-PROM MARKINGS	4/12/98	A9803	.25
WATERBOX DIVISION PLATE GASKETS	5/7/98	A9804	.25
PIC MODULE REPAIR AND RETURN	10/27/98	C9822A	.75
4-20MA TEMPERATURE RESET WIRING CHANGES	9/1/99	A9904	.50
ADDING LITHIUM HYDROXIDE OR HYDROBROMIC ACID TO ABSORPTION CHILLERS (SUPERSEDES CA-SB-16-C-76-39)	12/19/00	A0002	.50
16 SERIES SOLUTION ANALYSIS FREQUENCIES (SUPERSEDES A9902)	12/19/00	A0003	.75
COMPLETE SET OF ABSORPTION LIQUID CHILLER SERVICE BULLETINS IN A 2 INCH THREE (3) RING BINDER		CA-SB-16-ALL	65.00

**SERVICE  
BULLETINS**

**OPEN DRIVE  
CENTRIFUGAL LIQUID CHILLERS**

<b>SUBJECT/DESCRIPTION</b>	<b>DATE</b>	<b>ORDERING NUMBER</b>	<b>PRICE PER COPY</b>
17 SERIES SERVICE BULLETIN INDEX	2/1/01	CA-SB-17-I-01-1	\$ .75
OVERCOMING OIL FOAMING AT START-UP	8/17/60	CA-SB-17-60-1	.75
CONTACT SEAL SERVICE, INSPECTION & REPAIR GUIDE	10/12/64	CA-SB-17-64-2	3.00
OIL FILTER AND REPLACEMENT ELEMENTS	3/30/67	CA-SB-17-67-3	.75
PUMPOUT UNITS	1/11/68	CA-SB-17-68-4	4.25
1000-WATT OIL HEATER	10/10/68	CA-SB-17-68-5	.50
UNITED ELECTRIC OIL PRESSURE SWITCH	8/29/69	CA-SB-17-69-6	.50
NEW IMPROVED QUICK EXHAUST SOLENOID VALVE ASSEMBLY	9/26/69	CA-SB-17-69-7	1.25
ALLEN-BRADLEY DUAL-PRESSURE ACTUATED CONTROL	9/26/69	CA-SB-17-69-8	.50
17 SERIES (H.P.) THERMAL PURGE	9/26/69	CA-SB-17-69-9	1.00
AUXILIARY OIL PUMP REGULATOR ADJUSTING SCREW HEAD	9/26/69	CA-SB-17-69-10	.50
SHAFT END LABYRINTH AND O-RING PACKAGE	12/19/69	CA-SB-17-69-11	.50
SUCTION DAMPER TEFLON "V" RING PACKING	2/20/70	CA-SB-17-70-12	1.00
17 SERIES OIL FILTERS/AA, BZ, CZ, DZ COMPRESSORS	5/22/70	CA-SB-17-70-13	.25
17 SERIES OIL PRESSURE	6/26/70	CA-SB-17-70-14	.25
EXTERNAL OIL PRESSURE REGULATOR PART # 17MA-41-1822	7/24/70	CA-SB-17-70-15	1.50
17DA CONOFLOW GUIDE VANE ACTUATOR AND POSITIONER	9/11/70	CA-SB-17-70-16	2.25
CLEARANCES AND FITS	10/23/70	CA-SB-17-70-17	3.00
BOMAC MOTOR LOAD LIMITING CONTROL	12/18/70	CA-SB-17-70-18	2.00
17DA COMPRESSOR	2/5/71	CA-SB-17-71-19	4.75
17 M,P,S CONTACT SEAL GUIDE RING	7/7/72	CA-SB-17-72-20	.50
SEAL OIL RETURN PUMP	5/4/73	CA-SB-17-73-21	.50

# OPEN DRIVE CENTRIFUGAL LIQUID CHILLERS

## SERVICE BULLETINS

SUBJECT/DESCRIPTION	DATE	ORDERING NUMBER	PRICE PER COPY
TYPE L PURGE	11/2/73	CA-SB-17-73-22	\$.50
17DA JOURNAL BEARING LINER	11/23/73	CA-SB-17-73-23	.50
17DA SHAFT MOVEMENT SWITCH	1/11/74	CA-SB-17-74-24	1.00
7L PURGE PRESSURE REGULATOR VALVE	11/15/74	CA-SB-17-74-25	.75
ORDERING 17DA IMPELLERS	4/11/75	CA-SB-17-75-26	1.00
17EA IMPELLERS	4/11/75	CA-SB-17-75-27	1.25
WORM LOCKNUT THREAD	1/27/76	CA-SB-17-76-28	.50
17 SERIES SUCTION DAMPER ACTUATOR ASSEMBLY	4/15/77	CA-SB-17-77-29	3.00
17 SERIES WATER BOX COVER WEIGHTS	6/12/78	CA-SB-17-78-30	1.25
BABBITTED COUNTERTHRUST BEARING	11/15/79	CA-SB-17-79-31	2.00
COUPLING GREASE	6/11/81	CA-SB-17-81-32	1.25
17 SERIES COMPRESSOR AUTOMATIC SUCTION DAMPER ASSEMBLY	10/26/83	CA-SB-17-83-33	.25
17DK/DM/DR CARBON SEAL REPLACEMENT	5/1/87	CA-SB-17-87-34	.50
17DK/DM/DR COUPLING MAINTENANCE	5/1/87	CA-SB-17-87-35	.50
17DK/DM/DR CARBON SEAL, COUPLING AND MOTOR BEARING INSPECTION	6/14/88	CA-SB-17-88-36	.75
DAMPER RING-END ROD DESIGN CHANGE	5/2/90	CA-SB-17-90-37	.75
17DK SEAL LEAK POT ASSEMBLY	7/16/90	CA-SB-17-90-38	.50
CFC CONSERVATION LEAK TESTING	7/10/92	A9201	.50
OILS, CURRENT PRODUCTION CHILLERS	9/4/92	C9216	.50
SYNTHETIC OIL (17 & 19 SERIES CENTRIFUGALS)	2/9/93	C9304	.50
17DA/EA COMPRESSOR IMPELLER FASTENING BOLT	5/7/93	C9309	.50
17M,P,S OIL PRESSURE REGULATOR	12/29/93	C9320	1.00

**SERVICE  
BULLETINS**

# OPEN DRIVE CENTRIFUGAL LIQUID CHILLERS

SUBJECT/DESCRIPTION	DATE	ORDERING NUMBER	PRICE PER COPY
TUBE EXPANDING, SWAGING	3/18/96	C9513A	\$1.00
17/19/23 PSIO II HARDWARE & SOFTWARE PART NUMBERS	1/26/96	C9603	.25
TEMPERATURE SENSORS	4/29/96	C9614	.25
DIVISION PLATE GASKETS	6/5/96	C9615	.50
VESSEL SEPARATION FEET	6/5/96	C9616	.50
17EX/FA VERSION 1 SOFTWARE	6/11/96	C9617	.50
CONTROL TRANSFORMER BACKFEED	7/11/96	C9620	.50
17 & 19DK/DM GUIDE VANE SHAFT SEALS	7/15/96	C9621	.25
BATTERY REPLACEMENT FOR PSIO/LID-1B	7/31/96	C9623	.25
LID-2B DISPLAY FOR PIC CONTROLS	7/31/96	C9624	.50
REFRIGERANT STORAGE AND TRANSFER	8/9/96	C9627	.25
CORRODING SENSORS	9/10/96	C9628	.25
17/19EX LABYRINTH REPLACEMENT	1/30/97	C9704	.25
17/19 EX/FA SHROUD 8 & 9 SHRINK FIT ON 1ST STAGE IMPELLER	2/5/97	C9705	.50
17FA-402-1363 COMPRESSOR OIL HEATER GASKET KIT	7/14/97	C9722	.25
17/19EX REVISED R-134A REFRIGERANT CHARGE	7/22/97	C9723	.75
17/19EX STICKING FLOAT VALVES	8/8/97	C9724	1.75
17FA LOW SIDE FLOAT BALL CHANGE	9/16/97	C9727	.25
SOLID STATE STARTERS-ELECTRIC ISOLATION REQUIREMENTS	9/23/97	C9728	.50
17FA WINDAGE BAFFLE (FOR 17FA & EX UNITS)	10/21/97	C9733	.25
17M, P, S OIL PUMP WITH R-134a	4/20/98	C9806	.25
17/19FA HOT GAS BY-PASS VALVE - FIELD SERVICE	4/22/98	C9808	.25

# OPEN DRIVE CENTRIFUGAL LIQUID CHILLERS

## SERVICE BULLETINS

SUBJECT/DESCRIPTION	DATE	ORDERING NUMBER	PRICE PER COPY
PIC R-134a RETROFIT KIT	4/27/98	C9810	\$ .50
06DA SCHRADER VALVE ASSEMBLY	6/10/98	C9818	.50
TUBE EXPANDING, SWAGING (SUPERSEDES C9513A)	6/17/98	C9819	1.50
19EA PUMPOUT CONTROL BOX WIRING CHANGES	6/29/98	C9820	.50
17FA/FX EXTERNALLY GEARED COMPRESSORS	7/6/98	C9821	.25
PIC MODULE REPAIR AND RETURN	10/27/98	C9822A	.75
WATER FLOW PRESSURE SWITCHES	10/9/98	C9826	.25
ALTERNATE GASKET MATERIAL	10/29/98	C9829	.50
PSIO II HARDWARE & SOFTWARE PART NUMBERS	2/1/99	C9906	.50
SHAFT SEAL O-RING TO QUAD RING CHANGE	2/26/99	C9910	1.00
STARTER MANUFACTURER ASSISTANCE (SUPERSEDES C9631)	3/15/99	C9911	.75
17FA R-22 COMPRESSOR SEAL (SUPERSEDES C9506 & C9302)	5/28/99	C9914	3.50
CENTRIFUGAL CHILLER PIC 1 Y2K REMEDIATION (SUPERSEDES C9734)	11/1/99	C9917	1.50
COMPRESSOR PIC DISCHARGE SENSOR REPLACEMENT (S/S C9736)	9/20/00	C0013	.25
COMPLETE SET OF OPEN DRIVE CENTRIFUGAL LIQUID CHILLER SERVICE BULLETINS IN A 2 INCH THREE (3) RING BINDER		CA-SB-17-ALL	75.00

**SERVICE  
BULLETINS**

# HERMETIC CENTRIFUGAL LIQUID CHILLERS

SUBJECT/DESCRIPTION	DATE	ORDERING NUMBER	PRICE PER COPY
19 SERIES SERVICE BULLETIN INDEX	2/1/01	CA-SB-19-I-01-1	\$ 1.50
MOTOR AMPERAGE READINGS	10/23/56	CA-SB-19-C-56-2	.50
SHUNT RESISTOR, MOTOR OVERLOAD CONTROL	6/5/57	CA-SB-19-C-57-3	.75
PURGE OPERATION, LIQUID LEVEL	8/12/57	CA-SB-19-C-57-4	.25
MOTOR WINDING THERMOSTAT	7/9/59	CA-SB 19-C-59-5	.25
INTERNAL VANE SHAFT SEAL, 19C	8/4/59	CA-SB-19-C-59-6	2.25
COMPRESSOR IMPELLER SPACING	4/20/60	CA-SB-19-C-60-7	4.00
ELECTRONIC CONTROLS (TROUBLESHOOTING GUIDE)	8/19/60	CA-SB-19-C-60-8	7.50
19C BEARINGS	11/8/60	CA-SB-19-C-60-9	9.00
VANE POSITION INDICATOR ASSEMBLY	4/20/61	CA-SB-19-C-61-10	1.00
ECONOMIZER GAS LOOP AND DAMPER ASSEMBLY	5/2/61	CA-SB-19-C-61-11	.75
BARBER COLEMAN ELECTRONIC CONTROL SERVICE GUIDE	10/20/61	CA-SB-19-C-61-12	5.25
THERMAL PURGE SERVICE GUIDE	3/8/62	CA-SB-19-C-62-13	5.00
19C MAIN BEARING DRAIN	9/11/63	CA-SB-19-C-63-14	1.50
RIGGING WEIGHTS, MACHINE COMPONENTS, 19C	9/12/63	CA-SB-19-C-63-15	.75
PURGING PROCEDURE, THERMAL PURGE	1/21/64	CA-SB-19-C-64-16	1.25
REMOVING THE 19D COMPRESSOR	2/7/64	CA-SB-19-D-64-17	.75
PURGE PUMP SERVICE GUIDE	3/25/64	CA-SB-19-C-64-18	.75
19D CLEARANCES, FITS, DIMENSIONS	4/21/64	CA-SB-19-D-64-19	.75
PURGE PUMP LEAKAGE	4/27/64	CA-SB-19-C-64-20	.25
19D OIL PUMP TIMEDELAY RELAY	7/27/64	CA-SB-19-D-64-21	.50
ANTI-RECYCLE TIMER CIRCUIT	9/28/64	CA-SB-19-C-64-22	1.25
VANE POSITION INDICATOR	10/12/64	CA-SB-19-C-64-23	1.00
19C NOSE CONE	10/22/64	CA-SB-19-C-64-24	1.00
DRAINING THE PURGE COLLECTION CHAMBER TUBE, 19D	1/6/65	CA-SB-19-D-65-25	.50
NON-LINEAR THROTTLING RANGE (BARBER COLEMAN CONTROLS), 19D	4/14/65	CA-SB-19-D-65-26	1.00
COOLER REFRIGERANT CHARGE	4/28/65	CA-SB-19-C-65-27	.50

# HERMETIC CENTRIFUGAL LIQUID CHILLERS

## SERVICE BULLETINS

SUBJECT/DESCRIPTION	DATE	ORDERING NUMBER	PRICE PER COPY
IMPELLER SPACING	7/14/65	CA-SB-19-D-65-28	\$ 2.25
MOTOR TERMINAL CONDENSATION, 19D	1/13/66	CA-SB-19-D-65-29	.25
THREE SHOE BEARING ASSEMBLY REDESIGN, 19C	2/3/66	CA-SB-19-C-66-30	.50
FLOAT CHAMBER EQUALIZING VALVE & VENT (19D11,21,31)	7/7/66	CA-SB-19-D-66-31	.75
THRUST BEARING THERMOSTAT MODIFICATION (19D11,21,31)	9/29/66	CA-SB-19-D-66-32	1.75
MAIN BEARING THERMOSTAT	3/9/67	CA-SB-19-C-67-33	1.25
19C CONTROL MODULE REPLACEMENT	4/6/67	CA-SB-19-C-67-34	2.75
THRUST BEARING ASSY. SPACER RING, 19D	4/6/67	CA-SB-19-D-67-35	1.00
MEASURING & ADJUSTING THRUST CLEARANCES 19D, 19DA	5/11/67	CA-SB-19-D-67-36	3.00
USING REFRIGERANT PUMP TO GET CORRECT SIGHT GLASS READINGS	6/8/67	CA-SB-19-D-67-37	.50
19D & 19DA REFRIGERANT CHARGES	6/29/67	CA-SB-19-D-67-38	.50
OIL COOLER SOLENOID VALVE (WATER CIRCUIT)	8/31/67	CA-SB-19-C-67-39	.25
19DA PURGE CONDENSING CHAMBER	10/19/67	CA-SB-19-D-67-40	1.25
PUMP OUT UNITS	1/11/68	CA-SB-19-C-68-41	5.00
19C & 17CA PRE-WHIRL VANE CONTROL	1/11/68	CA-SB-19-C-68-42	2.00
OIL COOLER SOLENOID VALVE WIRING CHANGE	2/1/68	CA-SB-19-C-68-43	.25
19D,DA MOTOR GUIDE	10/3/68	CA-SB-19-D-68-44	8.50
19D,DA THRUST BEARING MODIFICATION	11/22/68	CA-SB-19-D-68-45	.50
R-114 FLOAT VALVE, 19C	5/2/69	CA-SB-19-C-68-46	.50
19C, R-114 VANE QUICK CLOSE SOLENOIDS	7/3/69	CA-SB-19-C-68-47	.25
SAFETY PRECAUTIONS, DISPOSABLE REFRIGERANT CYLINDERS	12/23/69	CA-SB-19-C-69-48	.25
19 SERIES COMPRESSOR MOTOR STARTER WIRING	2/27/70	CA-SB-19-C-70-49	.25
32SM CONTROLS	5/15/70	CA-SB-19-E-70-50	.75
32SM CONTROLS-CHILLED WATER RECYCLE	8/7/70	CA-SB-19-C-70-51	.50



**SERVICE  
BULLETINS**

# HERMETIC CENTRIFUGAL LIQUID CHILLERS

SUBJECT/DESCRIPTION	DATE	ORDERING NUMBER	PRICE PER COPY
19EA ISOLATION VALVE	9/4/70	CA-SB-19-E-70-52	\$ .75
R1 & R2 RELAYS ON BARBER COLEMAN CONTROLS	2/5/71	CA-SB-19-C-71-53	.25
19EA OIL PUMP, FULL LOAD AMP CHANGES	4/8/71	CA-SB-19-E-71-54	.50
COOLER & CONDENSER WATER CAPACITIES, 19C	5/7/71	CA-SB-19-C-71-55	.25
COOLER & CONDENSER WATER CAPACITIES, 19DG	5/7/71	CA-SB-19-D-71-56	.25
COOLER & CONDENSER WATER CAPACITIES, 19EA	5/7/71	CA-SB-19-E-71-57	.25
PRE-WHIRL VANE CABLE ASSEMBLY	10/8/71	CA-SB-19-C-71-58	5.25
OIL REGULATOR VALVE	1/14/72	CA-SB-19-E-72-59	.50
CENTRIFUGAL MACHINES, GEAR LOCKING METHOD	1/19/72	CA-SB-19-E-72-60	.50
19EA OIL PUMP CAPACITY INCREASE	1/28/72	CA-SB-19-E-72-61	.75
19C TILTING SHOE THRUST BEARING	3/3/72	CA-SB-19-C-72-62	1.75
INDICATING RELAY FOR 32SM CONTROLS	8/25/72	CA-SB-19-C-72-63	.25
CLEARANCES AND FITS, 19C	12/8/72	CA-SB-19-C-72-64	1.00
VANE SHAFT SEAL REVISION	12/8/72	CA-SB-19-D-72-65	.25
CENTRIFUGAL MACHINES, GEAR LOCKING METHOD	1/19/73	CA-SB-19-E-73-66	.50
GUIDE VANE GEAR RACK BLOCK	2/9/73	CA-SB-19-C-73-67	.50
K4 RELAY ON 32SM CONTROLS	3/16/73	CA-SB-19-C-73-68	.50
ROBERTSHAW SENSOR RESISTANCE CHART	7/20/73	CA-SB-19-E-73-69	.50
19DG HERMETIC CENTRIFUGAL (INTERNAL AGITATOR ASSEMBLY)	11/23/73	CA-SB-19-D-73-70	.75
REFRIGERANT FEED CONTROL	11/11/74	CA-SB-19-E-74-71	.50
19D, DA, DG, DH THRUST BEARING & SHAFT REPLACEMENT	4/19/74	CA-SB-19-D-74-72	1.75
USE OF NEW STYLE PURGE CHECK VALVE (EC37JD017)	9/6/74	CA-SB-19-C-74-73	.75
7L PURGE PRESSURE REGULATOR VALVE	11/15/74	CA-SB-19-C-74-74	.75
19EA BEARING HOUSING & THRUST SHOE DESIGN CHANGE	9/5/75	CA-SB-19-E-75-75	.50
32SM CHILLED WATER PROBE SERVICING	3/4/76	CA-SB-19-E-76-76	.50

# HERMETIC CENTRIFUGAL LIQUID CHILLERS

**SERVICE  
BULLETINS**

SUBJECT/DESCRIPTION	DATE	ORDERING NUMBER	PRICE PER COPY
MOTOR REPLACEMENT GUIDELINES	4/23/76	CA-SB-19-E-76-77	\$1.00
19EA MOTOR COOLING, REFRIGERANT FILTER INSTALLATION	4/23/76	CA-SB-19-E-76-78	.75
19EA,FA MTR COOLING REFRIGERANT STRAINER & FILTER MAINTANENCE	4/23/76	CA-SB-19-FA-76-79	.25
PREWHIRL BLADE DESIGN CHANGE	5/3/76	CA-SB-19-E-76-80	1.50
OIL DIFFERENTIAL PRESSURE GAUGE DESIGN CHANGE	9/27/76	CA-SB-19-E-76-81	.50
19EA COOLER ECONOMIZER DIFFERENTIAL PRESSURE SWITCH (HK06CC020) RECALIBRATION	10/16/76	CA-SB-19-E-76-82	.75
17/19FA THRUST BEARING SHIMS	11/11/76	CA-SB-19-FA-76-83	.50
U.L. APPROVED LOW VOLTAGE MOTOR TERMINAL INSULATION	1/20/77	CA-SB-19-C-77-84	.25
OIL PUMP DESIGN CHANGE NEW TERMINAL (FUSITE)	7/15/77	CA-SB-19-D-77-85	.50
19DG, DESIGN 2, PURGE PUMP SWITCH WIRING	10/10/77	CA-SB-19-D-77-86	.50
HIGH STRENGTH STEEL STAYBOLTS	11/15/77	CA-SB-19-C-77-87	1.00
19CB SHIPPING OIL CHARGE	12/16/77	CA-SB-19-E-77-88	.25
REPLACEMENT OIL PUMP STARTERS	2/21/78	CA-SB-19-E-77-89	.75
7L1 COMPRESSION-TYPE PURGE PUMP MOTOR LUBRICATION	3/1/78	CA-SB-19-C-78-90	.25
19 SERIES HIGH VOLTAGE TERMINAL THREAD SEALING	5/23/78	CA-SB-19-E-78-91	.75
19EA OIL PUMP ASSEMBLY CHANGE	7/14/78	CA-SB-19-E-78-92	.25
DESIGN 2, CONTROL PANEL ON-STOP SWITCH MOUNTING	1/19/79	CA-SB-19-C-79-93	.25
RIGGING WEIGHTS, 19E SERIES MACHINE COMPONENTS	1/15/80	CA-SB-19-E-80-94	.75
IMPELLER DISPLACEMENT SWITCHES	6/3/80	CA-SB-19-E-80-95	.50
RIGGING WEIGHTS, 19D SERIES MACHINE COMPONENTS	1/16/80	CA-SB-19-D-81-96	.50
LAMINATED SHIM ADHESION	1/11/82	CA-SB-19-E-82-97	.25
32SM LOW TEMPERATURE CHILLED WATER PROBE SERVICING	3/3/82	CA-SB-19-E-82-98	.50
19D SERIES MOTOR COOLING SPRAY RINGS	5/12/82	CA-SB-19-D-82-99	1.00

**SERVICE  
BULLETINS**

# HERMETIC CENTRIFUGAL LIQUID CHILLERS

SUBJECT/DESCRIPTION	DATE	ORDERING NUMBER	PRICE PER COPY
FILTER DRIER INSTALLATION INSTRUCTIONS, 19 SERIES MACHINES	8/12/82	CA-SB-19-E-82-100	\$2.50
17/19DM DIFFUSER WALL CONTROL CALIBRATION AND ADJUSTMENT (WITHOUT 32MP CONTROLS)	7/2/85	CA-SB-19-D-85-101	1.50
COMPRESSOR PISTON	1/27/87	CA-SB-19-D-87-102	.50
GENERAL ELECTRIC HIGH VOLTAGE STARTERS	3/6/87	CA-SB-19-D-87-103	1.75
19DK/DM SERIES LOW VOLTAGE MOTOR TERMINAL LUGS	3/10/87	CA-SB-19-D-87-104	.75
19DR DUAL COMPRESSOR SURGE (STALL)	3/27/87	CA-SB-19-D-87-105	.75
3200MP SOFTWARE (EPROM) CHANGES	5/4/87	CA-SB-19-D-87-106	2.00
ESP CONFIGURATION & OPERATING PARAMETERS	9/25/87	CA-SB-19-D-87-107	.75
19DK/DM BINDING VANE SHAFT	12/9/87	CA-SB-19-D-87-108	.50
ESP REPLACEMENT PANELS	2/12/88	CA-SB-19-D-88-109	.50
19HR THRUST BEARING	2/17/88	CA-SB-19-H-88-111	.25
SPECTROL POTENTIOMETER FOR 19DM COMPRESSORS	5/3/88	CA-SB-19-D-88-112	1.00
3200MP TROUBLESHOOTING	11/14/88	CA-SB-19-D-88-113	5.00
THOMAS PURGE PUMP REPAIR KIT	3/6/89	CA-SB-19-D-89-114	.50
19DK/DM GROMMET SEAL	4/26/89	CA-SB-19-D-89-115	.25
32MP I-O BOARD MOV COLOR	6/29/89	CA-SB-19-D-89-116	.50
32MP CONTROL PANEL GROUNDING	10/30/90	CA-SB-19-D-89-117	.25
3200MP MOLEX TRIFURCON TERMINALS	1/14/90	CA-SB-19-D-90-118	.50
32MP660-010 EPROM KIT	2/2/90	CA-SB-19-D-90-119	.25
GUIDE VANE CRANK ARM	3/15/90	CA-SB-19-D-90-120	.25
32MP RETROKIT WITH A HONEYWELL GUIDE VANE ACTUATOR	4/12/90	CA-SB-19-D-90-121	.50
32MP CONTROL IMPROVEMENTS (ESP II)	5/1/90	CA-SB-19-D-90-122	1.25
GROMMET SEAL RETAINER	5/29/90	CA-SB-19-D-90-123	.25
INSTALLATION OF THE 19DK/DM SERVICE TABLE	6/25/80	CA-SB-19-D-90-124	1.00

# HERMETIC CENTRIFUGAL LIQUID CHILLERS



SUBJECT/DESCRIPTION	DATE	ORDERING NUMBER	PRICE PER COPY
17/19 DM SLOW OR STUCK DIFFUSER WALL	7/17/90	CA-SB-19-D-90-125	\$ .25
32MP/ESP START-UP & OPERATION REVISIONS	9/27/90	CA-SB-19-D-90-126	1.25
AUXILIARY RELAYS FOR 32MP CONTROLLERS	10/8/90	CA-SB-19-D-90-127	.25
17/19FA IMPELLER CLEARANCES	10/26/90	C9017	.25
"R-123 READY" 17/19DK AND 17/19DR WITH DK COMPRESSORS	1/14/91	C9018	.25
DM SANDWICH DIFFUSER WALL - 17/19DM COMPRESSORS WITH A 3 DIGIT COMPRESSOR CODE	1/28/91	C9103	.50
CUTLER HAMMER CHILLER STARTERS 17/19DR, DM, DK LOW VOLTAGE MACHINES	2/25/91	C9105	1.00
V-BAND/O-RING JOINTS - ALL D SERIES UNITS (SUPERSEDES R-C9107)	2/4/92	C9107B	1.25
GUIDE VANE CRANK ARM - 19DK/DM, 19EB4, 17/19FA4, 19HR	7/15/91	C9109	.50
17/19 C/CB 3200MP RETROFIT THRUST BEARING SENSOR	10/31/91	C9112	.50
CFC CONSERVATION LEAK TESTING	7/10/92	A9201	.50
CALIBRATION OF FURNAS SOLID STATE OVERLOADS	4/24/92	C9203	1.50
GUIDE VANE SHAFT BEARING/SEAL OIL CUP 17/19DK,DM	5/14/92	C9205	.50
HIGH DISCHARGE TEMPERATURES 19XL	5/25/92	C9206	.25
19XL GUIDE VANE ACTUATOR	6/19/92	C9207	.25
17/19DR REFRIGERATION LOG - 17/19DR DUAL COMPRESSOR CHILLERS	5/4/92	C9210	.50
THRUST BEARING ASSEMBLY -19HR	7/15/92	C9212	2.00
OILS, CURRENT PRODUCTION CHILLERS (17/19/23 SERIES MACHINES)	9/4/92	C9216	.50
SYNTHETIC OIL (17 & 19 SERIES CENTRIFUGALS)	2/9/93	C9304	.50
19XL COMPRESSOR HANDLING	3/2/93	C9305	.25
XL UNIT MOUNTED STARTER NOMENCLATURE	3/25/93	C9307	.50
3200MP CHILLER/GATEWAY SOFTWARE CHANGES 3200MP/ESP & CCN GATEWAY	6/18/93	C9310	2.25

**SERVICE  
BULLETINS**

# HERMETIC CENTRIFUGAL LIQUID CHILLERS

SUBJECT/DESCRIPTION	DATE	ORDERING NUMBER	PRICE PER COPY
3200MP COMPLETE PARTS LISTING (SUPERSEDES R-C9106A)	6/7/93	C9311	\$1.25
STANDARD THERMAL PURGE SAFETY SWITCH WIRING 17/19CB, 19DA,DG	9/7/93	C9313	.50
3200MP CODE 97	10/3/93	C9316	.50
PIPE THREAD SEALANTS FOR REFRIGERANT	11/17/93	C9317	.25
LID SERVICE PASSWORD ACCESS 19/23XL,19EX	12/6/93	C9318	.25
19XL OIL LOSS SYMPTOMS & SOLUTIONS	12/22/93	C9321	.75
OIL PUMP MTRS. & OVERLOAD HEATERS 17/19 CA,DK,DM,DR,EF,FA	2/21/94	C9402	1.00
19XL CONTINUOUS IMPROVEMENTS	1/20/94	C9403	.75
STARTER OPTIONAL KILOWATT METER CALIBRATIONS	8/2/94	C9406	.50
19EA/EB OIL OVERHEATING	8/25/94	C9408	.50
19XL PSIO SOFTWARE VERSION 9	11/10/94	C9409	.50
19XL OIL	11/10/94	C9410	.25
19D OIL REGULATOR SPRING	12/13/94	C9411	.25
19XL HIGH VOLTAGE TERMINAL INSTALLATION	1/11/95	C9504	.50
DUAL RELIEF VALVE ASSEMBLY	3/17/95	C9507	.50
VAPORSAVER INSTALLATION (ORIGINAL DESIGN)	3/16/95	C9508	2.00
VAPORSAVER FLANGE GASKETS	7/7/95	C9510	.25
TUBE EXPANDING, SWAGING	3/18/96	C9513A	1.00
PREVENT II SERVICE REQUIREMENTS	12/21/95	C9514	.50
17/19/23 PSIO II HARDWARE & SOFTWARE PART NUMBERS	1/26/96	C9603	.25
19XL IMPELLER/SHROUD CLEARANCE	2/1/96	C9608	1.00
VERSION 10 SOFTWARE	3/8/96	C9610	.50
19EA/EB GEAR SHROUDS FOR HIGH SPEED GEARS	4/6/96	C9611	.50
19EF/EX/FA VERSION 3 SOFTWARE	5/6/96	C9612	.75
TEMPERATURE SENSORS	4/29/96	C9614	.25

# HERMETIC CENTRIFUGAL LIQUID CHILLERS

## SERVICE BULLETINS

SUBJECT/DESCRIPTION	DATE	ORDERING NUMBER	PRICE PER COPY
DIVISION PLATE GASKETS	6/5/96	C9615	\$.50
VESSEL SEPARATION FEET	6/5/96	C9616	.50
19XL/XT, 19XR/XRT OIL PUMP & STATOR AVAILABILITY	7/5/96	C9618	.75
19XL/XT, 19EX & 19XR/XRT HIGH VOLTAGE TERMINAL INSTALLATION	7/5/96	C9619	.75
CONTROL TRANSFORMER BACKFEED	7/11/96	C9620	.50
17 & 19DK/DM GUIDE VANE SHAFT SEALS	7/15/96	C9621	.25
BATTERY REPLACEMENT FOR PSIO/LID-1B	7/31/96	C9623	.25
LID-2B DISPLAY FOR PIC CONTROLS	7/31/96	C9624	.50
REFRIGERANT STORAGE AND TRANSFER	8/9/96	C9627	.25
CORRODING SENSORS	9/10/96	C9628	.25
19XL LINEAR FLOAT	12/19/96	C9629	.75
IQ-1000 II DEFAULT SETTINGS AND CALIBRATION	9/16/96	C9632	3.25
19XR REFRIGERANT CHARGE	9/23/96	C9633	.25
UPDATED 19XL REFRIGERANT CHARGES	8/23/96	C9634	.25
CHILLER PUMPOUT WIRING CORRECTION	10/9/96	C9636	.50
19XL MOTOR END BELL O-RING	10/23/96	C9637	.25
19XR/XRT FAMILIARIZATION	11/18/96	C9638	.75
17/19EX LABYRINTH REPLACEMENT	1/30/97	C9704	.25
17/19 EX/FA SHROUD 8 & 9 SHRINK FIT ON 1ST STAGE IMPELLER	2/5/97	C9705	.50
19XR OIL PRESSURE SENSOR FAULT	2/11/97	C9706	.50
BUTTERFLY ISOLATION VALVES	4/7/97	C9708	.25
INLET GUIDE VANE ASSEMBLY PROCEDURE	4/21/97	C9710	.50
19/23XL & 19XR LOW LEVEL GROUND FAULT	4/21/97	C9711	.75
19XR/XRT PRESSURE RELIEF VALVE	4/24/97	C9712	.25
SHRINK WRAP FOR MOTOR TERMINALS	5/16/97	C9714A	.25
19XL MOTOR COOLING ARRANGEMENT	4/25/97	C9716	1.00
17FA-402-1363 COMPRESSOR OIL HEATER GASKET KIT	7/14/97	C9722	.25

**SERVICE  
BULLETINS**

# HERMETIC CENTRIFUGAL LIQUID CHILLERS

SUBJECT/DESCRIPTION	DATE	ORDERING NUMBER	PRICE PER COPY
17/19EX REVISED R-134A REFRIGERANT CHARGE	7/22/97	C9723	\$ .75
17/19EX STICKING FLOAT VALVES	8/8/97	C9724	1.75
19XL VERSION 11 SOFTWARE	9/8/97	C9725	.75
17FA LOW SIDE FLOAT BALL CHANGE (FOR 19EF & 19FA UNITS)	9/16/97	C9727	.25
SOLID STATE STARTERS - ELECTRICAL ISOLATION REQUIREMENTS	9/23/97	C9728	.50
19XL OIL HEATER REPLACEMENT	10/17/97	C9731	.50
HIGH VOLTAGE MOTOR TERMINAL KITS (SUPERSEDES CA-SB-19-E-88-110 & C9113)	10/17/97	C9732	.75
17FA WINDAGE BAFFLE (FOR 19FA & 19EX UNITS)	10/21/97	C9733	.25
17/19FA HOT GAS BY-PASS VALVE FIELD SERVICE	4/22/98	C9808	.25
PIC R-134a RETROFIT KIT	4/27/98	C9810	.50
02XR/XRT FRAME 3 IMPELLER/BALANCE PISTON LABY CHANGE	5/21/98	C9812	.25
BENSHAW, SMM-LESS STARTER SHUNT TRIP RESET	6/1/98	C9813	.50
PSIO TO CMM WIRING	6/1/98	C9814	.25
19XR/XRT IMPELLER SPACING PROCEDURE	6/1/98	C9815	2.00
02XR2 & 02XR5 COMPR' IMPELLER INTERFERENCE CORRECTIONS	6/10/98	C9816	.25
06DA SCHRADER VALVE ASSEMBLY	6/10/98	C9818	.50
TUBE EXPANDING, SWAGING (SUPERSEDES C9513A)	6/17/98	C9819	1.50
19EA PUMPOUT CONTROL BOX WIRING CHANGES	6/29/98	C9820	.50
PIC MODULE REPAIR AND RETURN	10/27/98	C9822A	.75
WATER FLOW PRESSURE SWITCHES	10/9/98	C9826	.25
ALTERNATE GASKET MATERIAL	10/29/98	C9829	.50
PREVENT REGULATING VALVE	11/6/98	C9830	1.00
PIC II CONTROLS FAMILIARIZATION	12/10/98	C9831	1.00
19XL/XR/XRT OIL LINE WEAR	2/5/99	C9904	.25
PSIO II HARDWARE & SOFTWARE PART NUMBERS	2/1/99	C9906	.50
STARTER MANUFACTURER ASSISTANCE (SUPERSEDES C9631)	3/15/99	C9911	.75

# HERMETIC CENTRIFUGAL LIQUID CHILLERS



SUBJECT/DESCRIPTION	DATE	ORDERING NUMBER	PRICE PER COPY
MOTOR DRAIN LINE ORIFICE	4/20/99	C9913	\$ .25
RETAINED MOTOR VOLTAGE	8/10/99	C9916	.25
CENTRIFUGAL CHILLER PIC I Y2K REMEDIATION (SUPERSEDES C9734)	11/1/99	C9917	1.50
19XR PIC II CVC SOFTWARE VERSION 03	11/12/99	C9918	.50
ISM CHANGES, VERSION 04	11/12/99	C9920	.50
19XR CROSSOVER ISOLATION VALVE	3/22/00	C0003	.75
VERSION 12 SOFTWARE FOR PIC II BENSCHAW STARTERS	7/17/00	C0005	.25
OIL PRESSURE ALARMS	7/17/00	C0006	.50
DC VOLT ANALOG INPUTS, PIC II CONTROLS	7/17/00	C0007	.50
19XR PIC II SOFTWARE, VERSION 04	7/17/00	C0008	.50
19XR5 DIFFUSER POSITION FAULT	9/20/00	C0012	.25
COMPRESSOR PIC DISCHARGE SENSOR REPLACEMENT (S/S C9736)	9/20/00	C0013	.25
19XR5 ADVISORY	10/30/00	C0015	.50
ISM TRANSITION WITH WYE-DELTA STARTER	2/26/01	C0103	.25
19XR HI-SPEED SHAFT & LABYRINTH CHANGE (SUPERSEDES C9921)	3/5/01	C0107	.50
BRASS WATER SIDE PRESSURE TRANSDUCERS FOR PIC II	3/5/01	C0109	.50
PIC THERMISTOR THERMOWELLS	3/5/01	C0111	.50
HEAD PRESSURE REFERENCE FROM PIC II BENSCHAW STARTERS	3/12/01	C0113	.25
19XR PRODUCT CHANGE-FLANGED & DISHED WATERBOX COVERS	5/14/01	C0117	.25
REFRIGERANT CHARGING / REMOVAL ADVISORY	5/17/01	C0120	.75
COMPLETE SET OF HERMETIC CENTRIFUGAL LIQUID CHILLER SERVICE BULLETINS IN A POST BINDER		CA-SB-19-ALL	215.00



**SERVICE  
BULLETINS**

# HERMETIC SCREW CENTRIFUGAL LIQUID CHILLERS

SUBJECT/DESCRIPTION	DATE	ORDERING NUMBER	PRICE PER COPY
23 SERIES SERVICE BULLETIN INDEX	2/1/01	CA-SB-23-I-01-1	\$ .50
CFC CONVERSION LEAK TESTING	7/10/92	A9201	.50
OILS - CURRENT PRODUCTION CHILLERS	9/4/92	C9216	.50
XL UNIT MOUNTED STARTER NOMENCLATURE	3/25/93	C9307	.50
LID SERVICE PASSWORD ACCESS	12/6/93	C9318	.25
23XL REFRIGERANT & OIL CHARGES	2/2/95	C9503	.25
23XL "TAKE APART" GASKETS	2/14/95	C9505	.25
DUAL RELIEF VALVE ASSEMBLY	3/17/95	C9507	.50
23XL WATERBOX DESIGN CHANGE	7/18/95	C9511	.50
23XL MOTOR REWORK PROCEDURE	8/7/95	C9512	.75
TUBE EXPANDING, SWAGING	3/18/96	C9513A	1.00
23XL SLIDE VALVE LOCKNUTS	4/16/96	C9602A	.75
17/19/23 PSIO II HARDWARE & SOFTWARE PARTS	1/26/96	C9603	.25
VERSION 14 SOFTWARE FOR 23XL CHILLERS	1/25/96	C9604	1.00
23XL PSIO INSTALLATION INSTRUCTIONS	1/25/96	C9605	1.00
23XL SERVICE TOOL KIT	2/5/96	C9606	.25
TEMPERATURE SENSORS	4/29/96	C9614	.25
CONTROL TRANSFORMER BACKFEED	7/11/96	C9620	.50
23XL COMPONENT RIGGING	11/20/96	C9622	.25
BATTERY REPLACEMENT FOR PSIO/LID-1B	7/31/96	C9623	.25
LID-2B DISPLAY FOR PIC CONTROLS	7/31/96	C9624	.50
REFRIGERANT STORAGE AND TRANSFER	8/9/96	C9627	.25
CORRODING SENSORS	9/10/96	C9628	.25
IQ-1000 II DEFAULT SETTINGS AND CALIBRATION	9/16/96	C9632	3.25
BUTTERFLY ISOLATION VALVES	4/7/97	C9708	.25
23XL - FRAME 4 SLIDE ROD CHANGE	4/15/97	C9709	.50
19/23XL & 19XR LOW LEVEL GROUND FAULT	4/21/97	C9711	.75
SHRINK WRAP FOR MOTOR TERMINALS	5/16/97	C9714A	.25

# HERMETIC SCREW CENTRIFUGAL LIQUID CHILLERS

## SERVICE BULLETINS

SUBJECT/DESCRIPTION	DATE	ORDERING NUMBER	PRICE PER COPY
23XL SLIDE VALVE SPRING RETAINER (SHAFT)	5/12/97	C9715	\$ .25
23XL SLIDE VALVE OPERATION AND TROUBLESHOOTING	6/14/97	C9719	1.00
23XL VERSION 15 SOFTWARE	7/8/97	C9721	1.00
SOLID STATE STARTERS - ELECTRICAL ISOLATION REQ.	9/23/97	C9728	.50
YEAR 2000 DATE CHANGE	11/7/97	C9734	.25
23XL COMPRESSOR MAINTENANCE TOOLS	1/2/98	C9802	.50
BENSHAW, SMM-LESS STARTER SHUNT TRIP RESET	6/1/98	C9813	.50
06DA SCHRADER VALVE ASSEMBLY	6/10/98	C9818	.50
TUBE EXPANDING, SWAGING (SUPERSEDES C9513A)	6/17/98	C9819	1.50
19EA PUMPOUT CONTROL BOX WIRING CHANGES	6/29/98	C9820	.50
PIC MODULE REPAIR AND RETURN	10/27/98	C9822A	.75
23XL OIL FILTER CASING LEAKS	10/27/98	C9825	.25
WATER FLOW PRESSURE SWITCHES	10/9/98	C9826	.25
CAPACITY SLIDE ROD SURFACE FINISH REQUIREMENTS	10/27/98	C9827	.25
ALTERNATE GASKET MATERIAL	10/29/98	C9829	.50
PSIO II HARDWARE & SOFTWARE PART NUMBERS	2/1/99	C9906	.50
CAPACITY SLIDE ROD STANDARDIZATION	2/24/99	C9908	1.00
STARTER MANUFACTURER ASSISTANCE (SUPERSEDES C9631)	3/15/99	C9911	.75
ISM CHANGES, VERSION 04	11/12/99	C9920	.50
VERSION 12 SOFTWARE FOR PIC II BENSHAW STARTERS	7/17/00	C0005	.25
DC VOLT ANALOG INPUTS, PIC II CONTROLS	7/17/00	C0007	.50
HOWDEN VS INGERSOLL-RAND MANUFACTURED 23XL COMPRESSORS	3/5/01	C0102	.50
ISM TRANSITION WITH WYE-DELTA STARTER	2/26/01	C0103	.25
23XL VARIABLE VI COMPRESSOR VALVE STOP INTERFERENCE	3/5/01	C0105	.50
SPRING WASHER IMPROVEMENT	3/7/01	C0106	.25
23XL OIL SEPARATOR & CORRESPONDING MACHINE CHANGES	3/5/01	C0108	.50

## SERVICE BULLETINS

# HERMETIC SCREW CENTRIFUGAL LIQUID CHILLERS

SUBJECT/DESCRIPTION	DATE	ORDERING NUMBER	PRICE PER COPY
BRASS WATER SIDE PRESSURE TRANSDUCERS FOR PIC II	3/5/01	C0109	\$ .50
PIC THERMISTOR THERMOWELLS	3/5/01	C0111	.50
HEAD PRESSURE REFERENCE FROM PIC II BENSHAW STARTERS	3/12/01	C0113	.25
23XL PIC II SOFTWARE, VERSION 02	3/12/01	C0114	.50
23XL SLIDE VALVE SUPPORT (SUPERSEDES C9804)	4/19/01	C0115	.25
23XL OIL LEVEL SWITCH & TEMPERATURE SENSOR	5/9/01	C0121	.50
COMPLETE SET OF SCREW CENTRIFUGAL LIQUID CHILLER SERVICE BULLETINS IN A 1 INCH THREE (3) RING BINDER		CA-SB-23-ALL	35.00

## CHARTS & LOG SHEETS

# CHARTS & LOG SHEETS

DESCRIPTION	SHEETS PER PAD	ORDERING NUMBER	PRICE PER COPY
ABSORPTION LIQUID CHILLER LI BR EQUILIBRIUM CHART (PLASTIC)		020-516	\$ 4.40
PRESSURE/TEMPERATURE REFRIGERENT CHARTS (PACKAGE OF 5)		819-168	1.75
<b>REFRIGERATION LOG SHEETS:</b>			
ABSORPTION LIQUID CHILLERS			
MODELS 16B, C, E, HA	(100)	R-905-117	5.50
MODELS 16JA & JB	(100)	905-131	7.97
OPEN DRIVE CENTRIFUGAL LIQUID CHILLERS ALL MODELS	( 50)	R-905-130	5.50
HERMETIC CENTRIFUGAL LIQUID CHILLERS			
MODEL 19C	( 50)	R-905-093	3.75
MODEL 19D	( 50)	R-905-126	3.75
MODEL 19EA, FA	( 50)	R-905-135	3.75

19DR LOG SHEET- SEE SERVICE BULLETIN NUMBER R-C9210

17/19EX, 19/23XL & 19XR LOG SHEETS - REFER TO THE START-UP, OPERATING & MAINTENANCE INSTRUCTION CATALOG FOR THE RESPECTIVE MACHINE MODEL.

# PACKAGED SERVICE TRAINING MATERIAL

**TRAINING MATERIAL**

MODEL	DESCRIPTION	ORDERING NUMBER	PRICE PER COPY
16HA	16HA ABSORPTION LIQUID CHILLERS	020-330	SEE NEXT PAGE
16JA/JB	16JA/JB ABSORPTION LIQUID CHILLERS	020-331	SEE NEXT PAGE
16DF	DIRECT-FIRED, DOUBLE-EFFECT ABSORPTION CHILLER	021-600	SEE NEXT PAGE
16JT	STEAM, DOUBLE-EFFECT ABSORPTION CHILLER	021-602	SEE NEXT PAGE
17/19FA	17/19FA CENTRIFUGAL LIQUID CHILLERS	020-332	SEE NEXT PAGE
19C	19C/CB HERMETIC CENTRIFUGAL LIQUID CHILLERS	020-333	SEE NEXT PAGE
19D	19D, DA, DG, DH CENTRIFUGAL LIQUID CHILLERS	020-334	SEE NEXT PAGE
19E	19EA,EB HERMETIC CENTRIFUGAL LIQUID CHILLERS	020-335	SEE NEXT PAGE
19XL	CENTRIFUGAL CHILLER WITH PIC CONTROL SYSTEM	021-900	SEE NEXT PAGE
19XR	"EVERGREEN" CENTRIFUGAL CHILLER	021-904	SEE NEXT PAGE
19XT	TURBINE-ASSISTED CENTRIFUGAL CHILLER	021-902	SEE NEXT PAGE
23XL	SCREW CHILLER WITH PIC CONTROL SYSTEM	023-010	SEE NEXT PAGE
	REFRIGERANT PRESSURE/TEMPERATURE CHART (PACKAGE OF 10)	020-499	SEE NEXT PAGE
	REFRIGERANT SERVICE TECHNIQUES	020-650	SEE NEXT PAGE
	A SAFETY GUIDE FOR REFRIGERATION AND AIR CONDITIONING EQUIPMENT (PACKAGE OF 25)	571-100	\$ 23.75/PKG.

## PACKAGED SERVICE TRAINING PROGRAMS

Our packaged service training programs provide an excellent way to increase your knowledge. Product programs cover:

- Unit Familiarization
- Installation Overview
- Maintenance
- Operating Sequence

A large selection of product, theory, and skills programs are available. All programs include a video cassette and/or slides and a companion booklet. Use these for self-teaching or to conduct full training sessions.

For a free Service Training Material Catalog (STM), call 1-800-644-5544. Ordering instructions are included.

**CD ROM**

**EPIC**

EPIC - (ELECTRONIC PARTS INFORMATION CATALOG)

EPIC is a data retrieval system designed to select generic replacement parts for all brands of HVACR equipment and factory authorized replacement parts for Carrier, Bryant, Day & Night and Payne brand equipment.

For more information about EPIC and how to obtain a subscription to the EPIC program, call 800-533-EPIC (3742).

**MISC.**

**BINDERS**

DESCRIPTION	ORDERING NUMBER	PRICE EACH
<b>THREE RING BINDERS:</b>		
Blue vinyl with white Carrier identification, clear plastic front and spine for inserts to identify contents.		
1" size	590-048	\$4.08
1 1/2" size	590-049	4.70
2" size	590-050	5.20
<b>CARRIER POST BINDER:</b>		
Blue with white Carrier imprint. This three post heavy duty binder expands from 3 to 5 inches and is equipped to handle 8 1/2 x 11 inch material.	590-231	12.38



# Service Literature for Carrier Commercial Applied Products

<b>TERMS:</b>		<b>Fax this form to (315) 433-4892 or Mail to: Carrier Corporation Bynum Training Center PO Box 4808 Syracuse, New York 13221-4808</b>			
<b>Minimum Order amount \$35.00.</b> <b>All orders must be paid by credit card or check in advance.</b> <b>Purchase Orders will not be accepted for billing. No C.O.D. orders will be accepted.</b> <b>Prices are subject to change without prior notice.</b>					
<b>Payment Method:</b> Check Enclosed    or    Credit Card Print Name As It Appears On Card Below:					
VISA            MasterCard                                  Expiration Date: (Below)		<b>Orders shipped ground freight unless otherwise specified.</b>			
Print Card Number Below:                                  /                                  /					
-                                  -                                  -		Order Date:	Date Required		
<b>Billing Address:</b>		<b>Ship To Address:</b>			
Company Name		Company Name			
Attn:		Attn:			
Street:		Street:                                  CANNOT SHIP TO PO BOXES			
City/State/Zip		City/State/Zip			
Phone:		Phone:			
<b>Special Instructions:</b>					
Item	Qty Ord	Catalog No.	Description	Unit Price	Extended Price
1					
2					
3					
4					
5					
6					
7					
8					
9					
10					
11					
12					
<b>Total Order</b>		<b>Shipping &amp; Handling Charges</b> \$25-\$50                                  \$10.00 \$51-\$100                                  \$15.00 \$101-\$250                                  \$20.00 \$251-\$500                                  \$25.00 \$501-\$750                                  \$30.00 \$751 & Up                                  \$35.00	In accordance with your state sales tax laws and regulations, Carrier is obligated to charge sales tax on literature sales to your company unless your company provides us with a properly executed exemption certificate.	<b>Subtotal</b>	
				<b>Freight</b>	
				<b>Sales Tax</b>	
				<b>Total</b>	

ITEM	QTY. ORD.	BULLETIN/CATALOG NO.	UNIT PRICE	TOTAL PRICE	ITEM	QTY. ORD.	BULLETIN/CATALOG NO.	UNIT PRICE	TOTAL PRICE
1					31				
2					32				
3					33				
4					34				
5					35				
6					36				
7					37				
8					38				
9					39				
10					40				
11					41				
12					42				
13					43				
14					44				
15					45				
16					46				
17					47				
18					48				
19					49				
20					50				
21					51				
22					52				
23					53				
24					54				
25					55				
26					56				
27					57				
28					58				
29					59				
30					60				
TOTAL COLUMN 1					TOTAL COLUMN 2				
					TOTAL COLUMNS 1 & 2				

Enter on Front of Order Form 

# SERVICE LITERATURE FOR CARRIER COMMERCIAL APPLIED PRODUCTS

This catalog contains a list of service literature related to Carrier absorption and centrifugal products.

For prompt handling of your order, please observe the following:

- Give complete "Sold To" information. Be sure to include street address - **not P.O. Box.**
- Include customer purchase order number (if order is to be billed), order date and any "Mark For" information you require on the shipping label.
- List each item separately by catalog number.
- List quantity of each item, the unit price and the total price. Be sure to include any applicable sales tax at the bottom of the order form.
- If an item is out of stock, it will be backordered and shipped as soon as available.

In addition, the following terms and conditions apply to all orders:

- Prices and offerings are subject to change without prior notice.
- Where items are padded, or packaged in quantities as noted, minimum order is one pad or package and total quantity ordered must be in multiples of the packaging unit. WE CANNOT SPLIT PACKAGES.
- All sales are final.
- **No telephone orders will be accepted.**
- Minimum billing is \$35.00.
- Purchase orders will be accepted for billing from established Carrier open account customers.
- **No C.O.D. orders will be accepted.**
- Please include your customer code in the customer account number block.
- Be sure to mail order to correct address as noted below and on order form.
- Freight will be prepaid and billed for airfreight shipments.

## ORDERING INSTRUCTIONS:

Please include your purchase order number, check, money order or VISA/MasterCard number and expiration date. Make checks payable as requested on the order form. Do not send cash. Purchase order and credit card orders can be faxed to (315) 432-3418.

**Note:** Minimum billing: \$35.00.



In accordance with your state sales tax laws and regulations, Carrier is obligated to charge sales tax on literature sales to you and/or your company unless your company provides us with a properly executed exemption certificate. Please include your state/local sales tax with your order, or enclose your tax exemption certificate.

Carrier Corporation  
Literature Services, Bldg. TR-2  
P.O. Box 4802  
Syracuse, New York 13221-4802