

SANKEY



Service Manual

26" LCD TV

Model: CLCD-2630

English Version

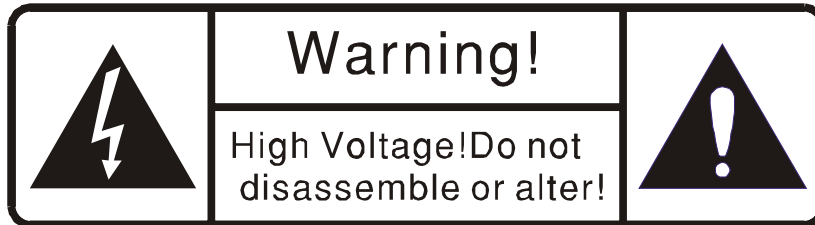
INDEX

1	Cautions.....	2
2	Product specification.....	3
3	Illustration of the interface panel.....	4
4	Illustration of the remote control.....	6
5	Alignment.....	8
6	Technical Information.....	9
7	Troubleshooting.....	24

1- Cautions

【Warning】

To reduce the risk of fire or electric shock, do not expose this equipment to rain or moisture.



This symbol is intended to alert the user to avoid the risk of electric shock, do not disassemble this equipment by anyone except a qualified service personnel.



This symbol is intended to alert the user to the presence of important operating and maintenance instructions in the literature accompanying the appliance.

CAUTION

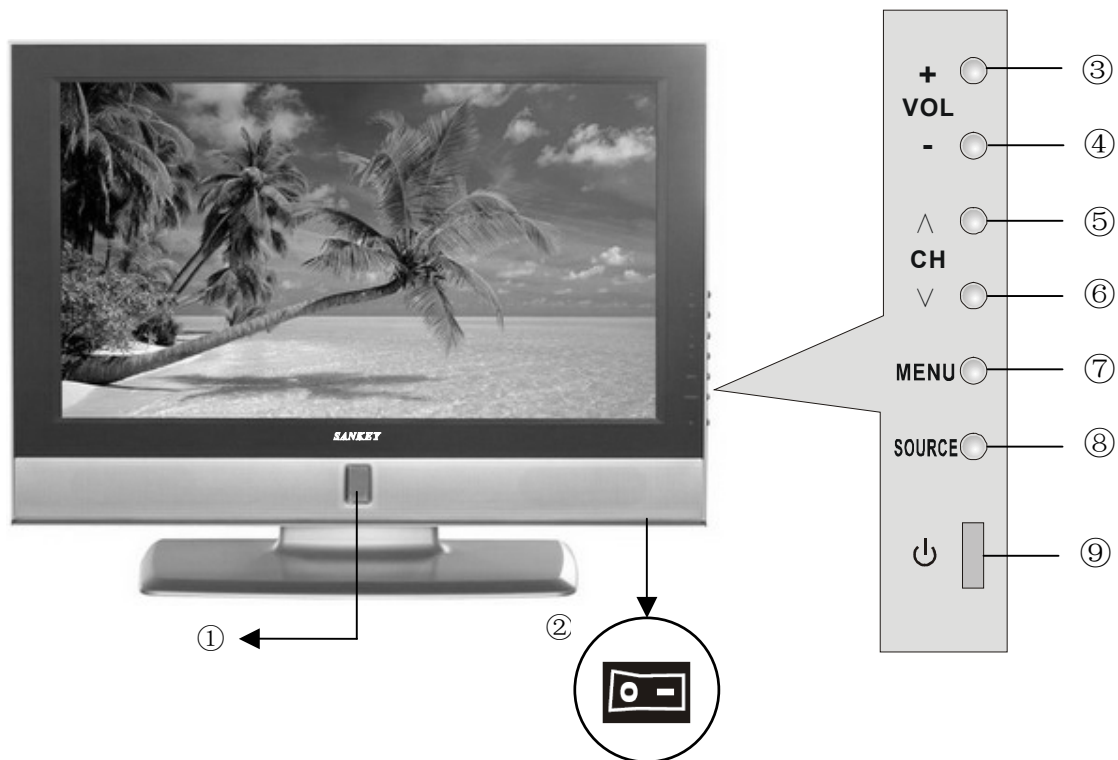
Use of controls or adjustments or performance of procedures other than those specified here in may result in hazardous radiation exposure

2- Product specification

ITEMS		SPECIFICATION
Panel	Panel Type Display Area Display Color View angle Resolution	26" TFT LCD 575.769 × 323.712 16.7 million 176°(H) / 176°(V) MAX resolution 1366 × 768
In/Out	PC	Analog RGB 15 pin D-sub
	Video	S-video Input Video Input HDTV (Y, Pb, Pr) Input HDMI Input
	Audio	Composite Input PC Input Earphone Output HDTV Input
TV	Antenna Color System Receiving System	75Ω Coaxial cable M, M/N NTSC/PAL-M/N
Others	Certifications Power waste Speaker Plug & Play Screen Control Power supply Remote Controller Weight Dimension	CE <140W 8W × 2 DDC 1/2 B On Screen Display Menu AC 100-240V~ Yes N.W: 11.3Kg G.W: 13.4Kg 780 (W) × 290 (H) × 595 (D)

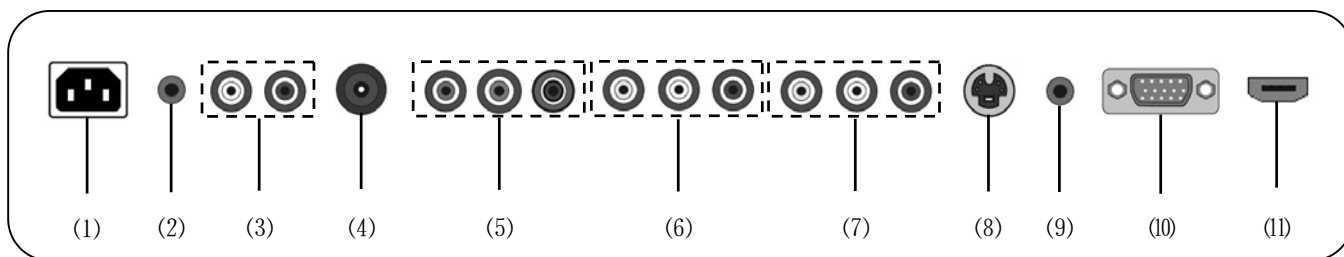
3- Illustration of the interface panel

(1) Illustration of control board



ITEM	DESCRIPTION
1 IR & LED	Infrared Receiver. (IR) The LED light indicates when the LCD TV is activated.
2 Power Switch	AC power on/off.
3 VOL+	Adjusts the volume up.
4 VOL-	Adjusts the volume down.
5 CH ^	Scans up through channels. Selects sub-menu items on the OSD mode.
6 CH v	Scans down through channels. Selects sub-menu items on the OSD mode.
7 MENU	Displays the OSD menu (on screen display).
8 SOURCE	Chooses from different input signal sources.
9 POWER	Turns the LCD TV on and off.

(2) Illustration of the interface panel



ITEM	DESCRIPTION
1 AC IN	Connects the AC power cord. (100~240V AC, 50/60Hz)
2 Earphone Out	Earphone out interface.
3 YCbCr/YPbPr Audio (L/R)	Audio in (L/R) jacks of your DVD player, HDTV, or video equipment.
4 RF(75Ω)	The RF input that connects to your VHF/UHF antenna or cable.
5 YCbCr/YPbPr	Component (Y, Cb/Pb, Cr/Pr) video jacks.
6 AV Out	Used to connect a video signal from a VTR or DVD
7 AV	Composite video input jacks.
8 S-Video	S-Video signal from an VCR or laserdisc player
9 PC Audio	Connects to the sound-output port of a personal computer
10 VGA	Used to connect a video signal from a personal computer
11 HDMI	Connects to a digital set-top box or other deceives with a HDMI interface.

4- Illustration of the remote control

Installing the batteries in your remote control

1. Pull the tab of the back cover and pull up on the cover to open the battery compartment.
2. Insert two AAA size batteries. Make sure to match the (+) and (-) ends of the batteries with the (+) and (-) ends indicated in the battery compartment.
3. Align the lower tabs of the back cover to the remote control and snap the cover into place.



If the remote controller is not used for a long time, please take the batteries out to avoid damages caused by the leaking liquid.

Please use the remote controller carefully. Do not drop the remote controller on the ground. Keep the remote controller away from moisture, sunshine, and high temperature.

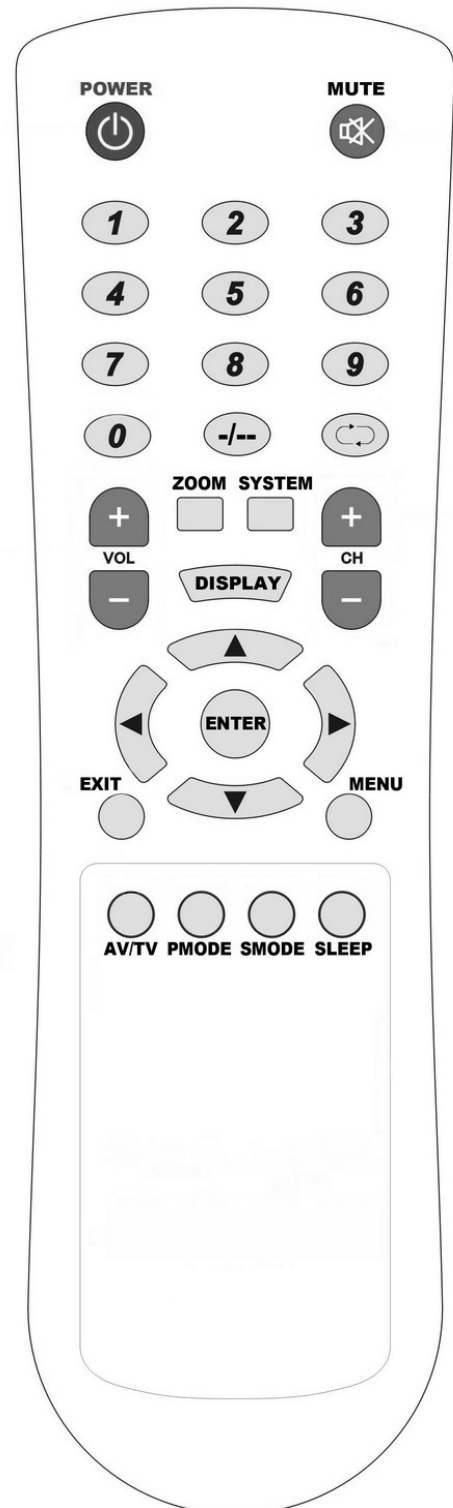


Illustration of the keys on the remote control:

1. POWER	Turns the LCD TV on and into standby mode.
2. MUTE	Mutes and restores your LCD TV sound.
3. 0~9	TV channel number select
4. -/--	One bit, two bit or three bit TV channel select
5. ↺↻	Switches back and forth between the current and previous channels.
6. VOL+	Volume up
7. VOL-	Volume down
8. CH+	TV channel up
9. CH-	TV channel down
10. ZOOM	Zoom the picture: 16:9, 16:9 Zoom, 16:9 USB, 14:9, Original
11. SYSTEM	TV System select
12. DISPLAY	Display current TV channel or cancel
13. ◀	Left orientation
14. ▶	Right orientation
15. ▲	Up orientation
16. ▼	Down orientation
17. ENTER	Select and set up the OSD options.
18. EXIT	Exits the OSD menu (on screen display).
19. MENU	Displays the OSD menu (on screen display)
20. AV/TV	TV/ Video/ S-VIDEO/ YPbPr/ VGA/ HDMI mode Select
21. PMODE	Selects picture mode: User/ Dynamic/ Standard/ Mild.
22. SMODE	Selects sound mode: User/ Standard/ Cinema/ Music/ News.
23. SLEEP	Sets the LCD TV sleep time.

5- ALIGNMENT

FACTORY

1. This mode uses the special remote control. Turn on the LCD TV. Press SMODE until "Theater" display on the screen. Press SLEEP until "120min" display on the screen. Press the green button.
2. The factory mode will be displayed.
3. Access the adjustment mode by pressing the ◀/▶ button. The adjustment parameters adjusted are listed in the accompanying table, and they are selected by pressing the ▲/▼ button.
4. Press ◀/▶ button to select the selection, adjust item value, or enter sub menu.

6- TECHNICAL INFORMATION

02
02.VGA.Sch

07
07.SCART

12
12.TUNER

01
01.POWER

08
08.SVP-CX32-1

03
03.AUDIO

09
09.SVP-CX32-2

up_A[0..7]
 up_AD[0..7]
 DP[0..23]

04
04.DVD

10
10.SVP-CX32-3

05
05.HDMI_IN Sil9011

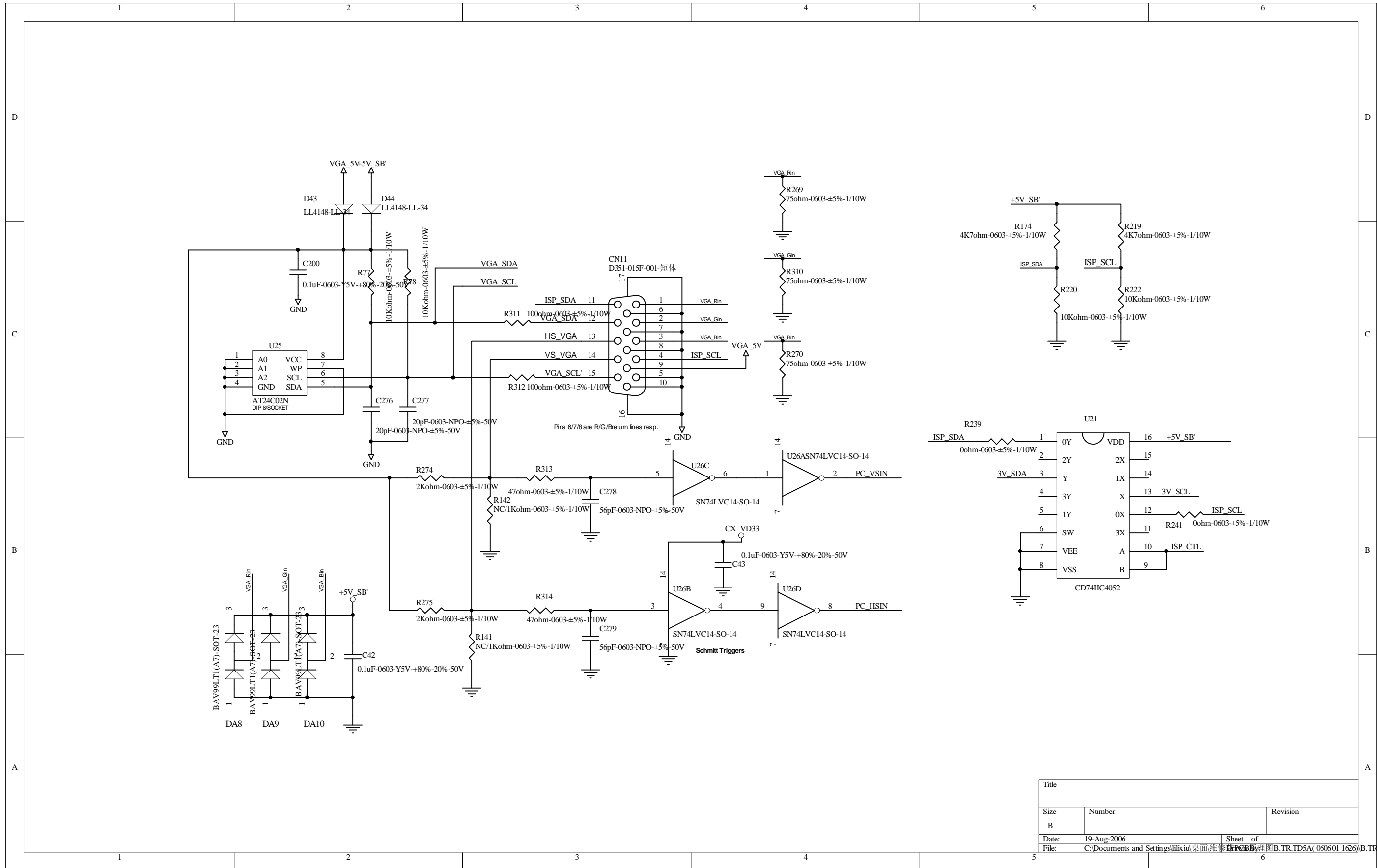
DP[0..23]

11
11.SVP-CX32-4

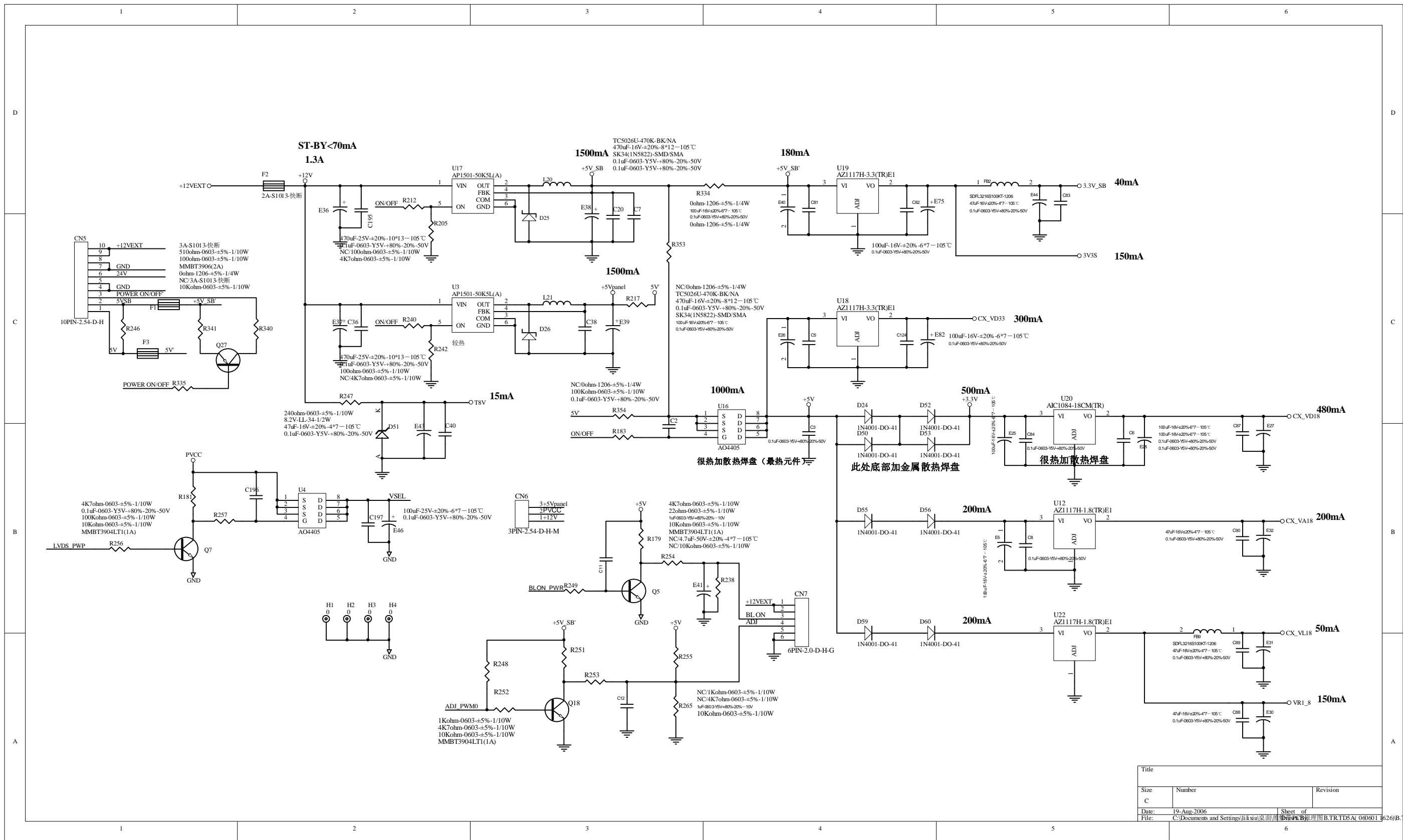
06
06.MPU_TSBS4 Sch

up_AD[0..7]
 up_A[0..7]

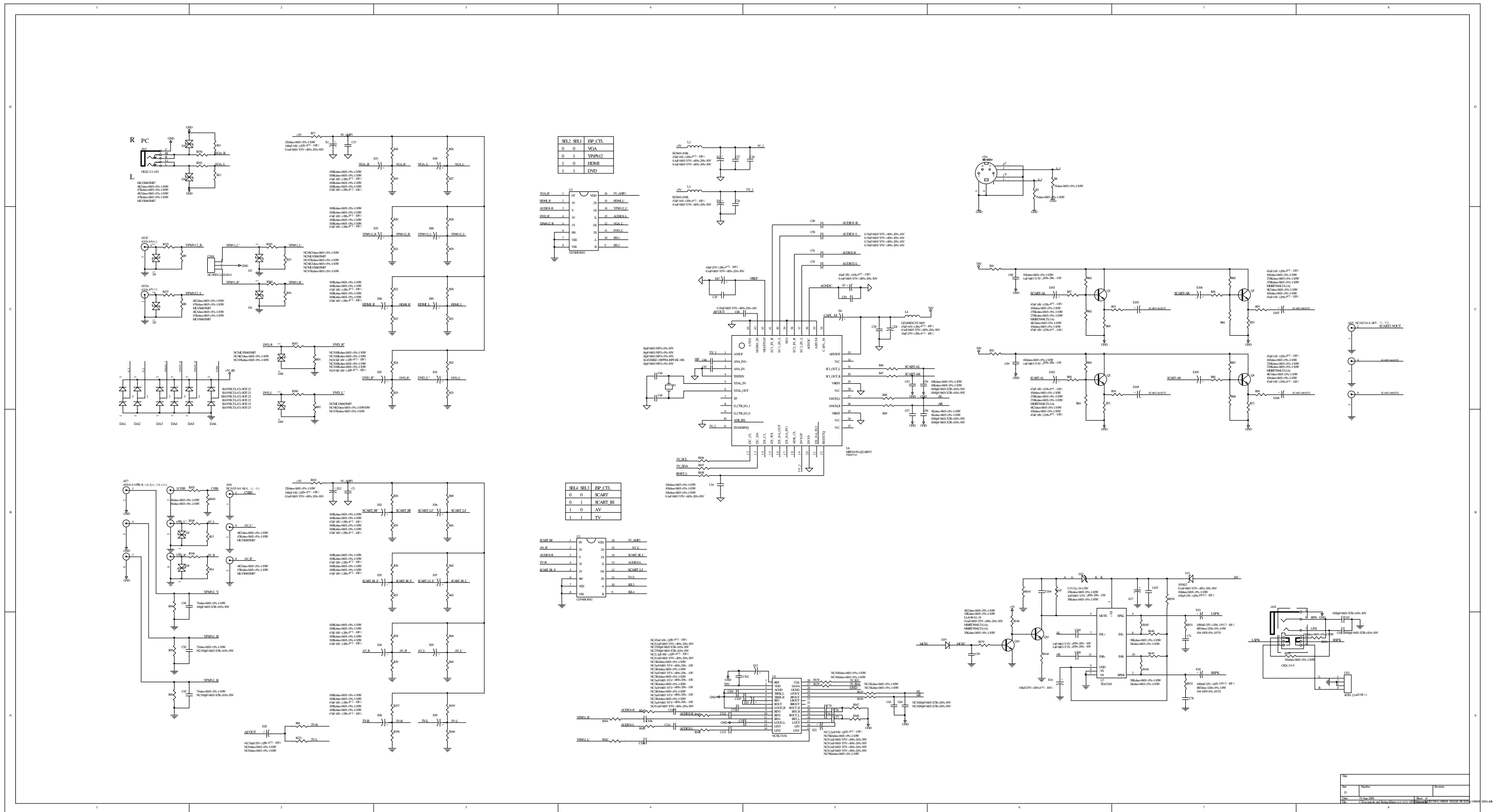
11
11.SVP-CX32-4

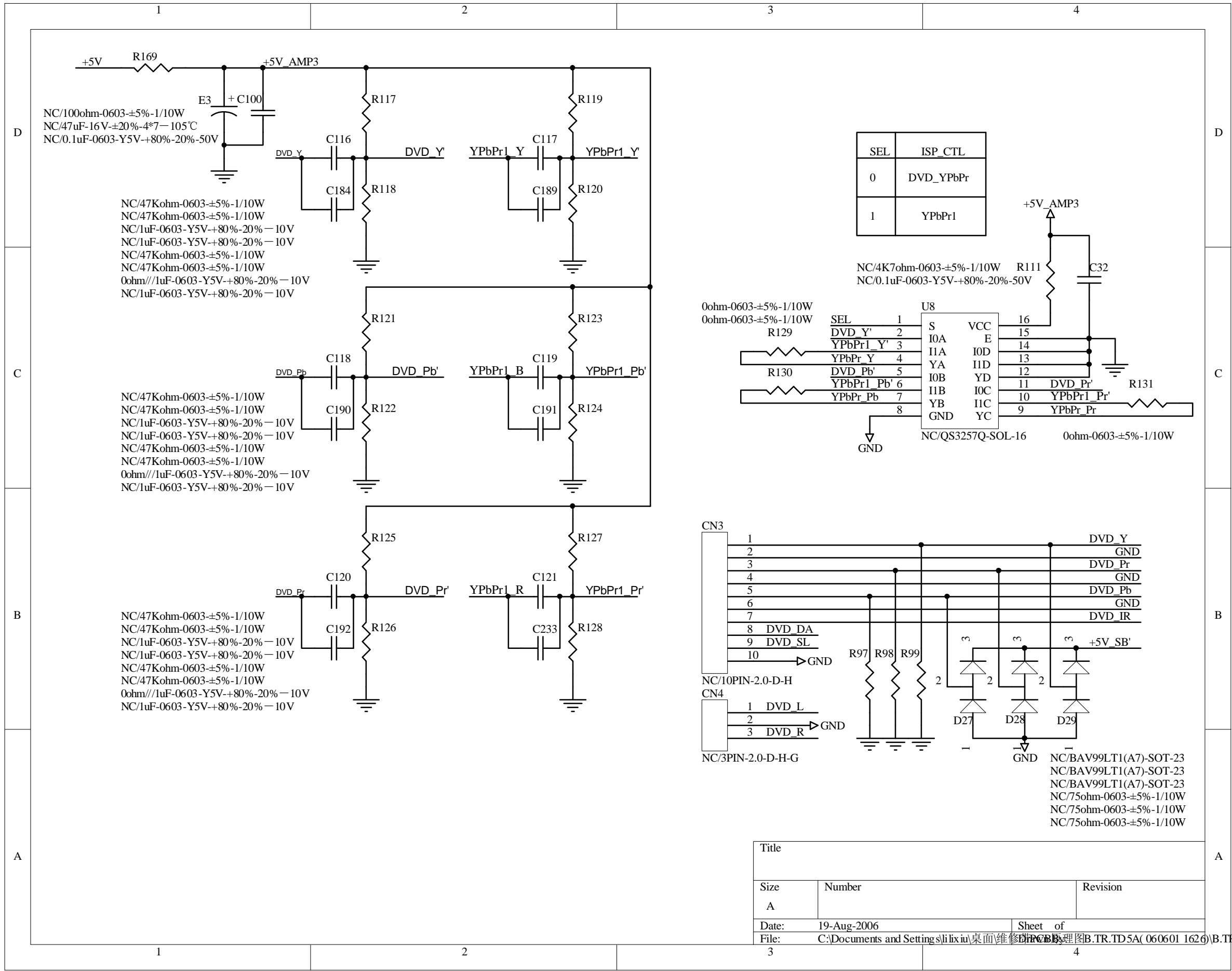


Title		
Size	Number	Revision
B		
Date:	19-Aug-2006	Sheet of
File:	C:\Documents and Settings\lix\Desktop\维修PCB\原理图\B.TR.TD5A(0606011626).B.TR.TD5A(0606011626).d	

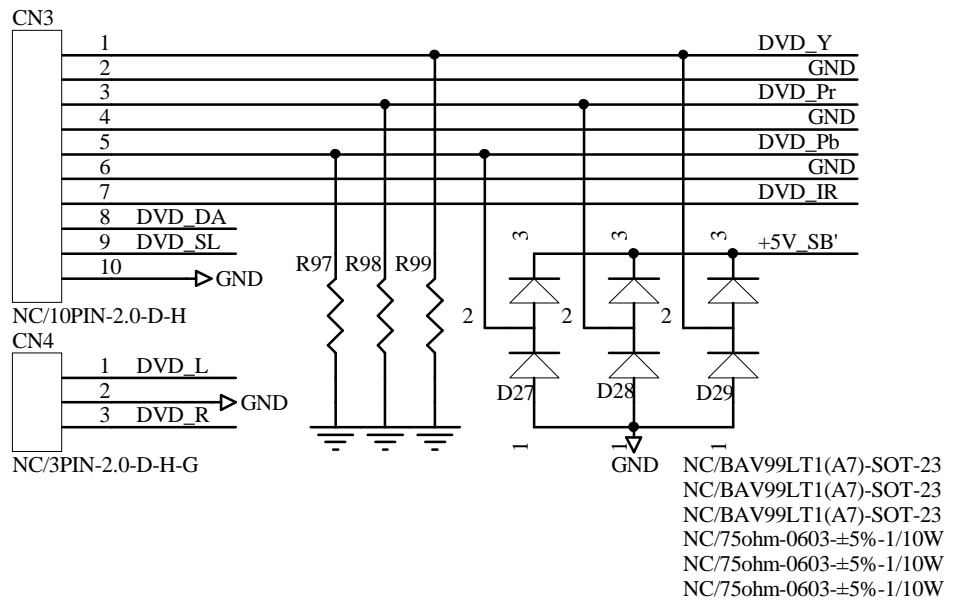
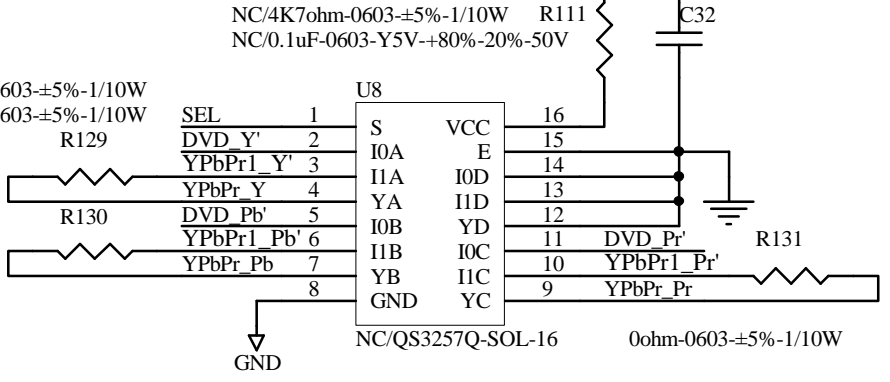


Title		
Size	Number	Revision
C		
Date:	19_Aug_2006	Sheet of
File:	C:\Documents and Settings\hsu\桌面\PCB\原理图\BTRTD5A(060601)626\BTRTD5A(060601)626.dxl	

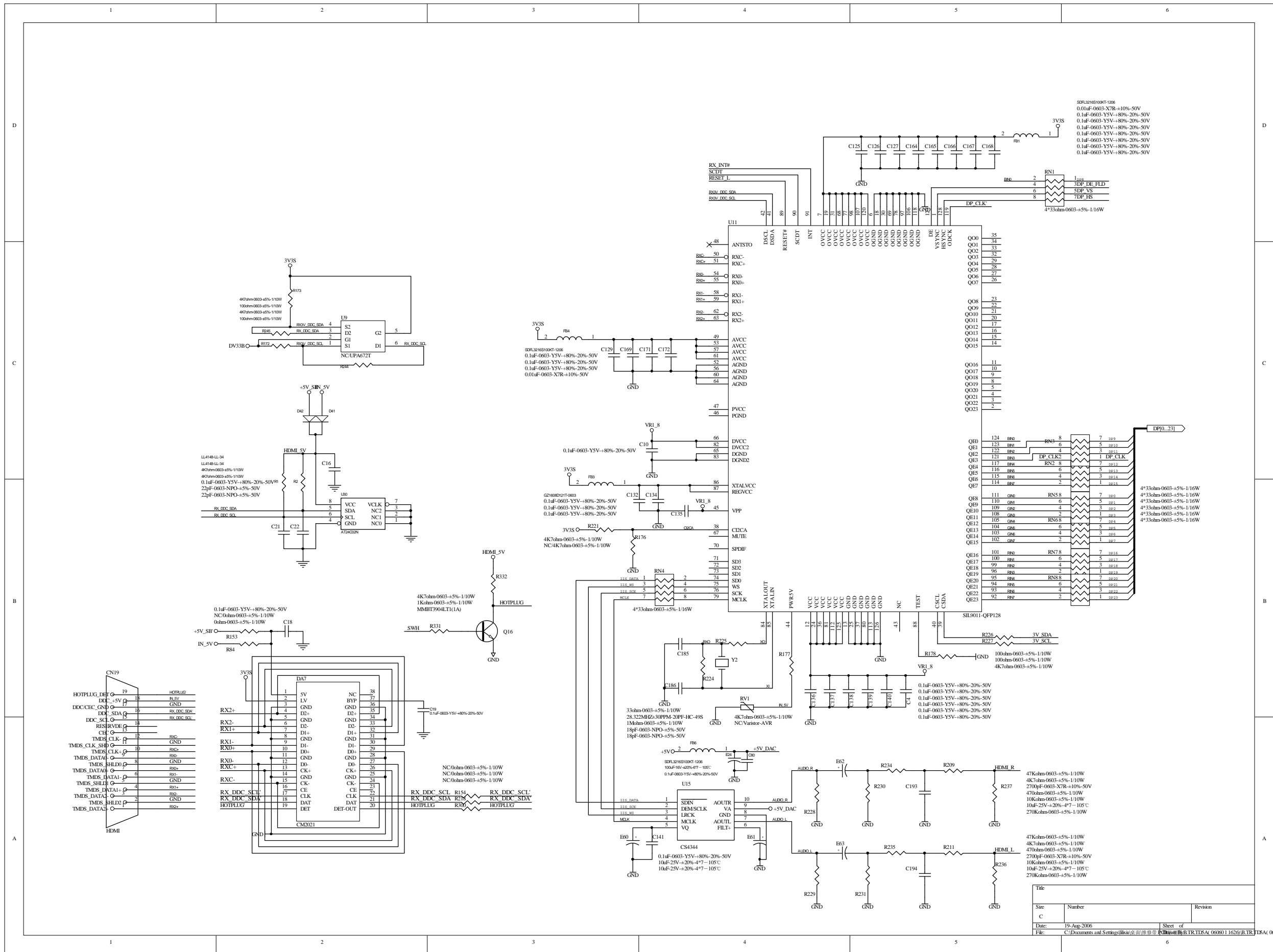


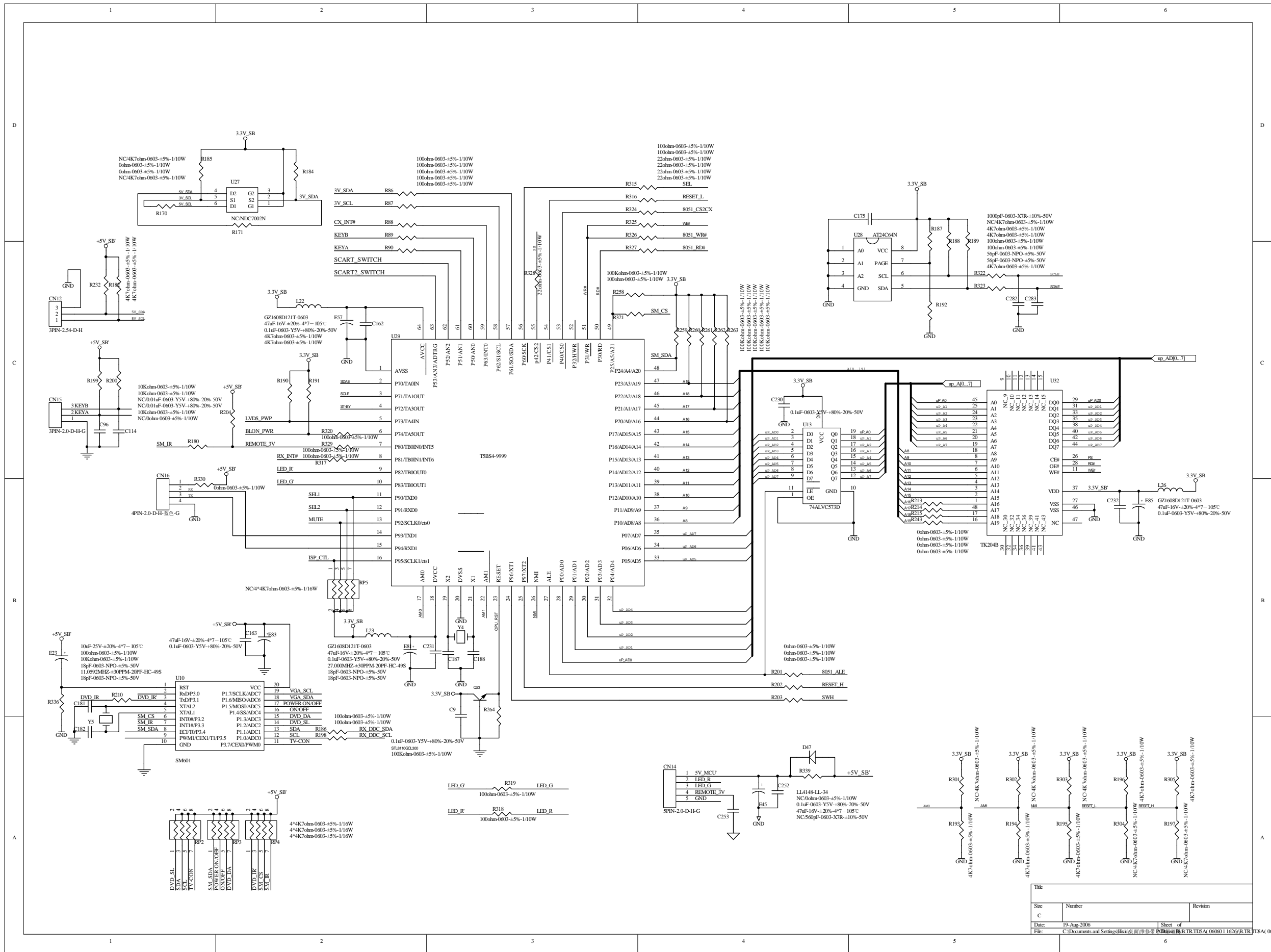


SEL	ISP_CTL
0	DVD_YPbPr
1	YPbPr1

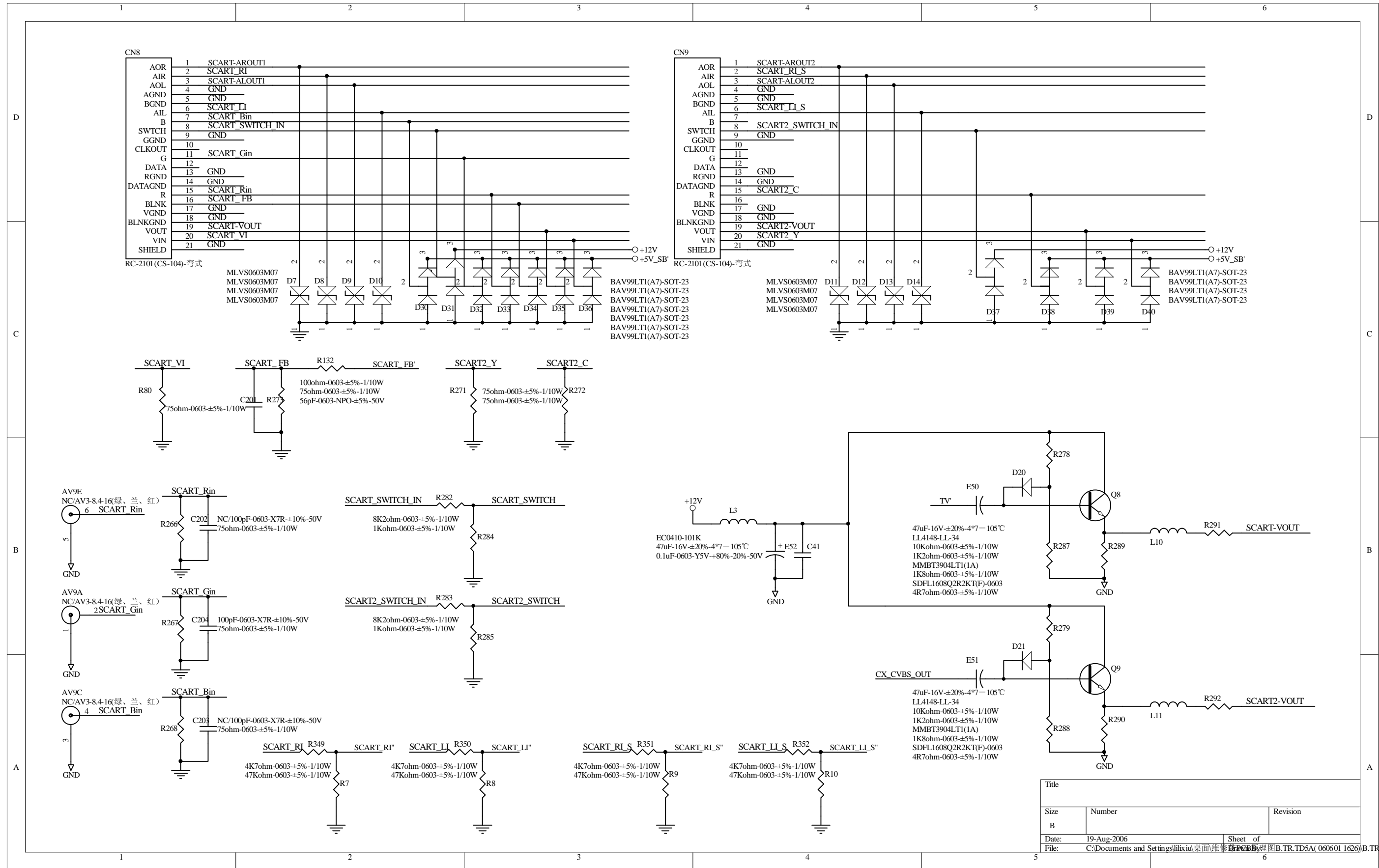


Title		
Size	Number	Revision
A		
Date:	19-Aug-2006	Sheet of
File:	C:\Documents and Settings\slilix\桌面\维修\PCB\原理图\B.TR.TD5A(0606011626)\B.TR.TD5A(0606011626).ddb	

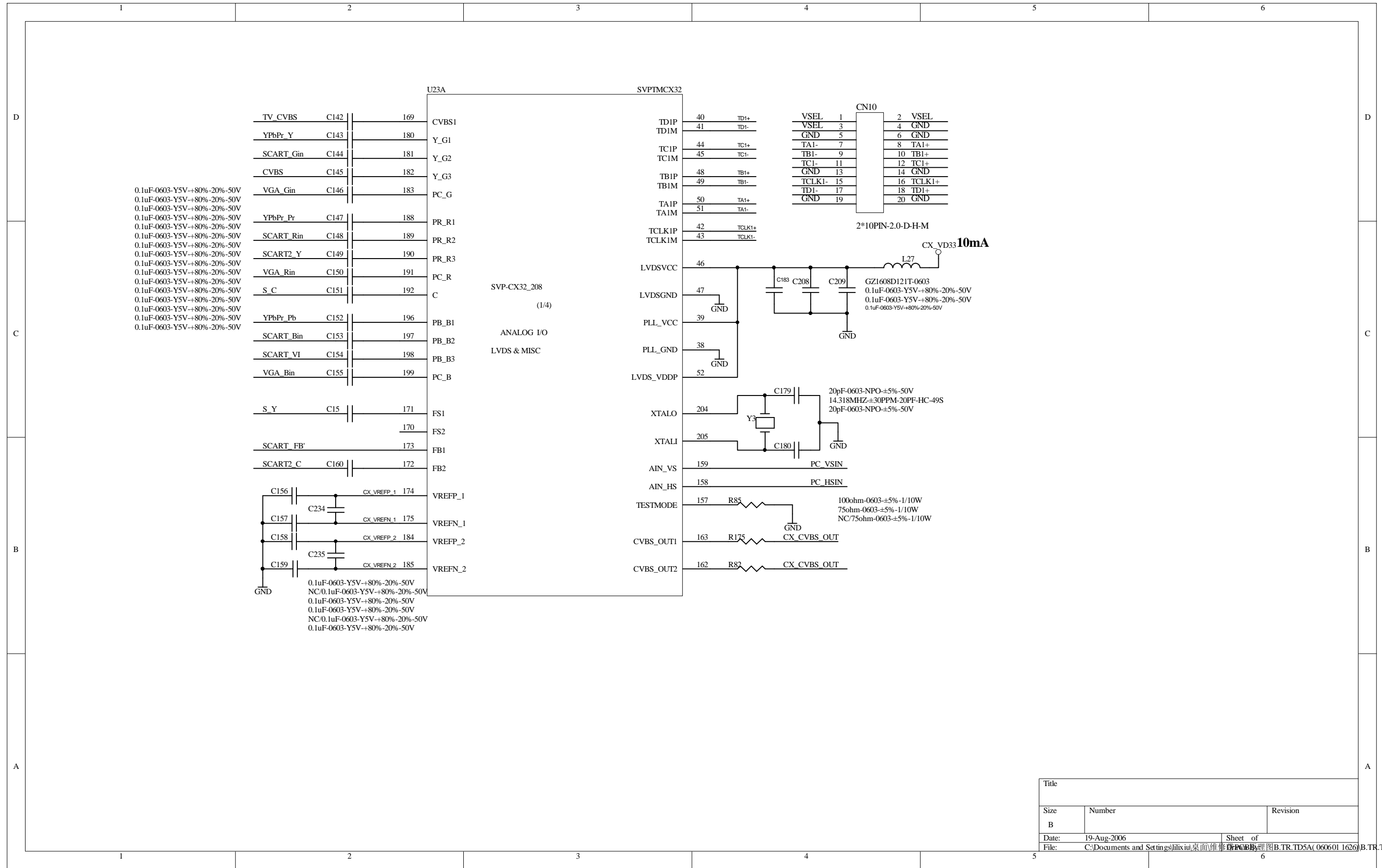




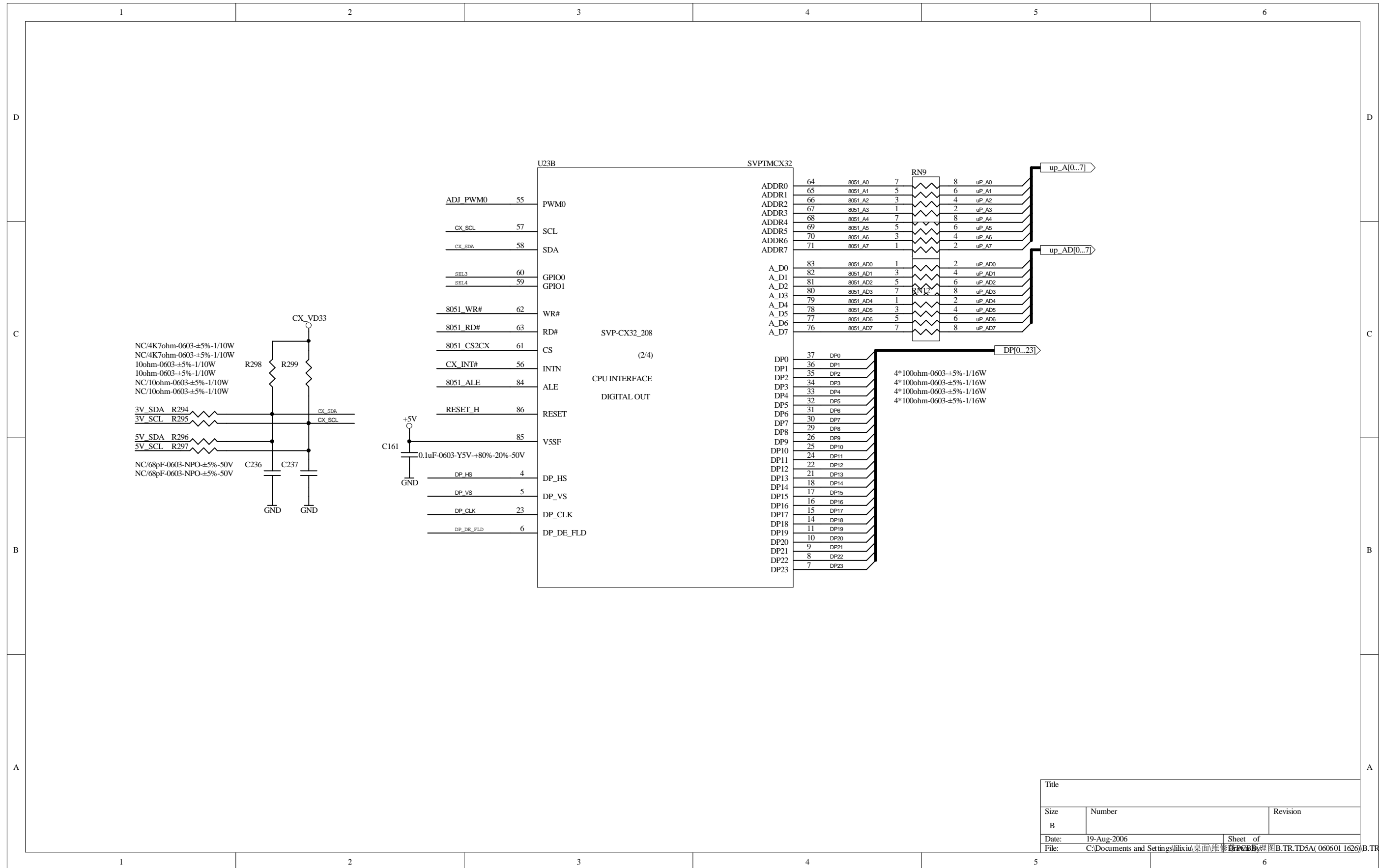
Title		
Sic	Number	Revision
C		
Date:	19-Aug-2006	Sheet of
File:	C:\Documents and Settings\lisa\桌面\维修\PC\BIB\BIB.TD.A (0000) 1.626.B.TK.TD.A (0000) 1.626.dsb	



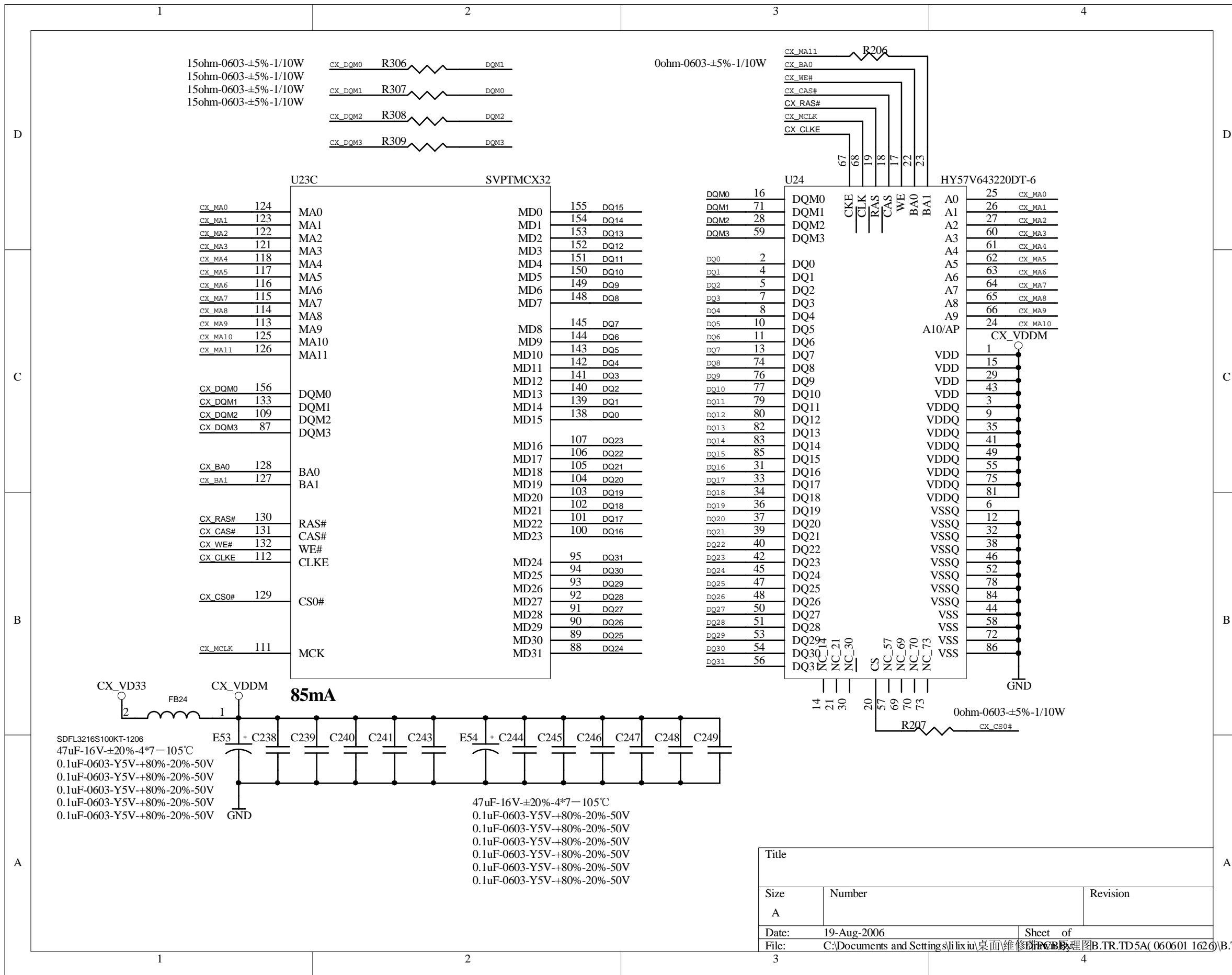
Title		
Size	Number	Revision
B		
Date:	19-Aug-2006	Sheet of
File:	C:\Documents and Settings\lixix\Desktop\维修PCB\原理图\B.TR.TD5A(0606011626).B.TR.TD5A(0606011626).PCB	



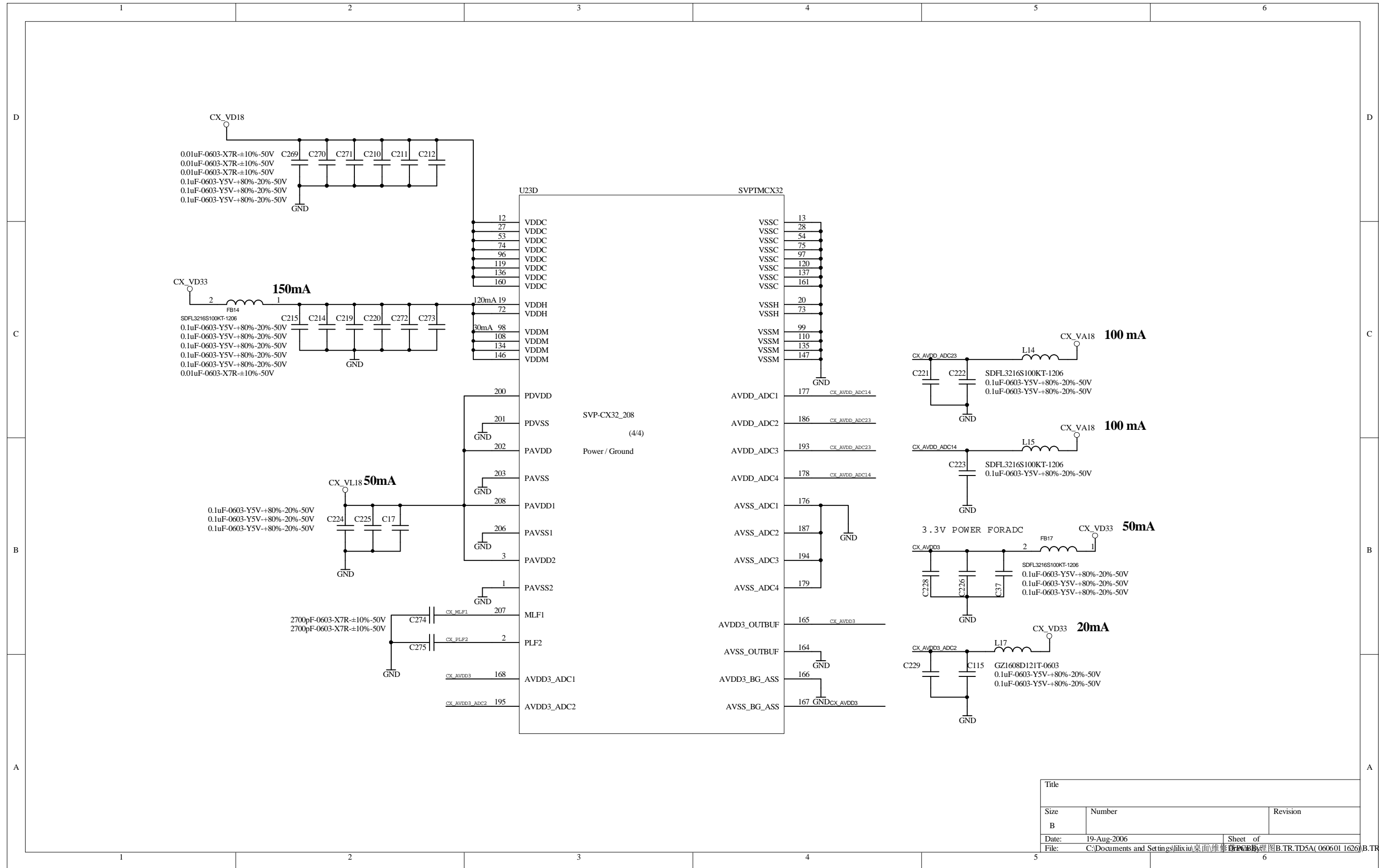
Title	
Size	Number
B	
Date:	19-Aug-2006
File:	C:\Documents and Settings\lixia\Desktop\维修PCB\理图\B.TR.TD5A(060601 1626) B.TR.TD5A(060601 1626).d



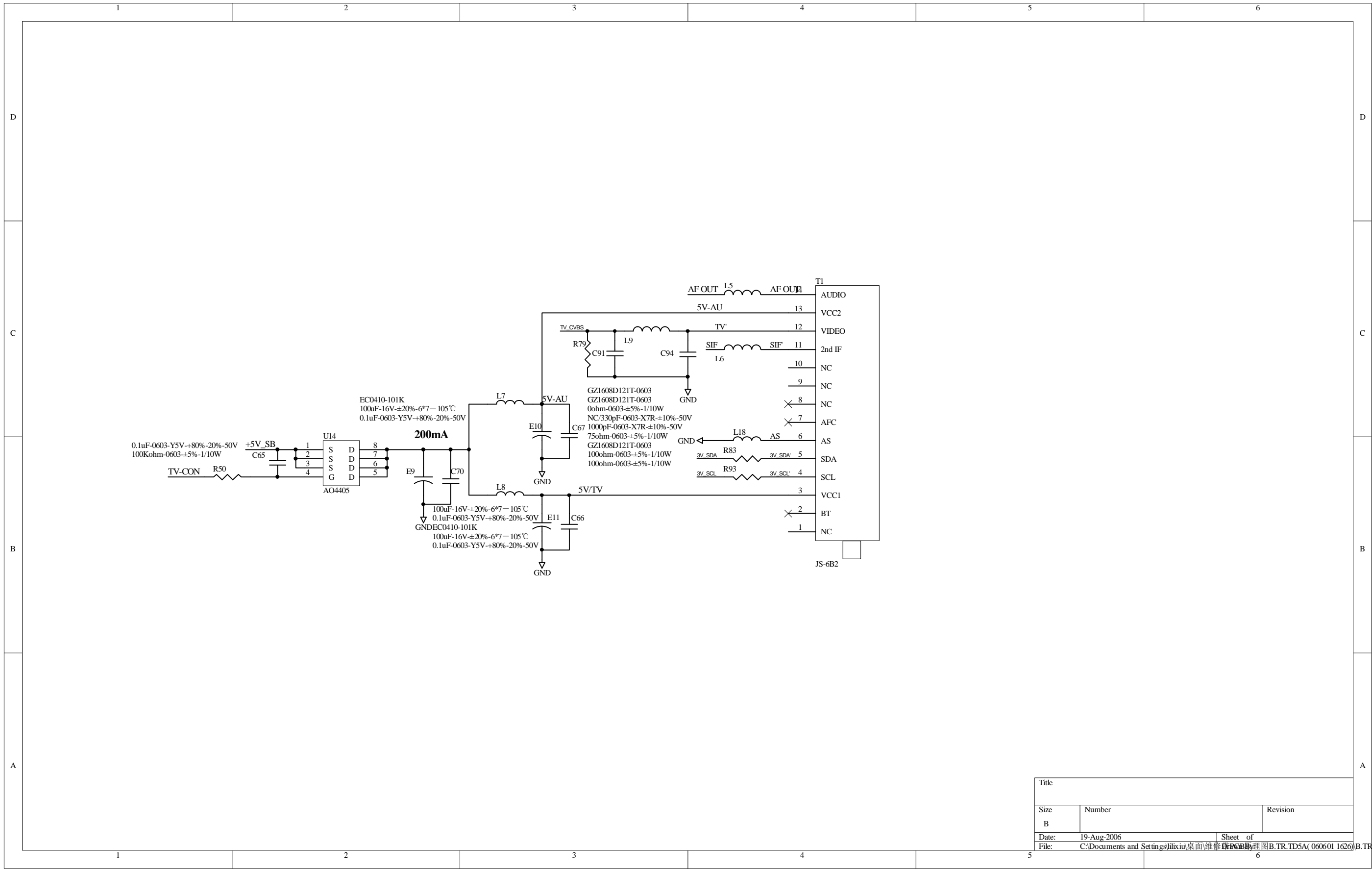
Title		
Size	Number	Revision
B		
Date:	19-Aug-2006	Sheet of
File:	C:\Documents and Settings\lixin\桌面\维修PCB\理图B.TR.TD5A(060601 1626).B.TR.TD5A(060601 1626).d	



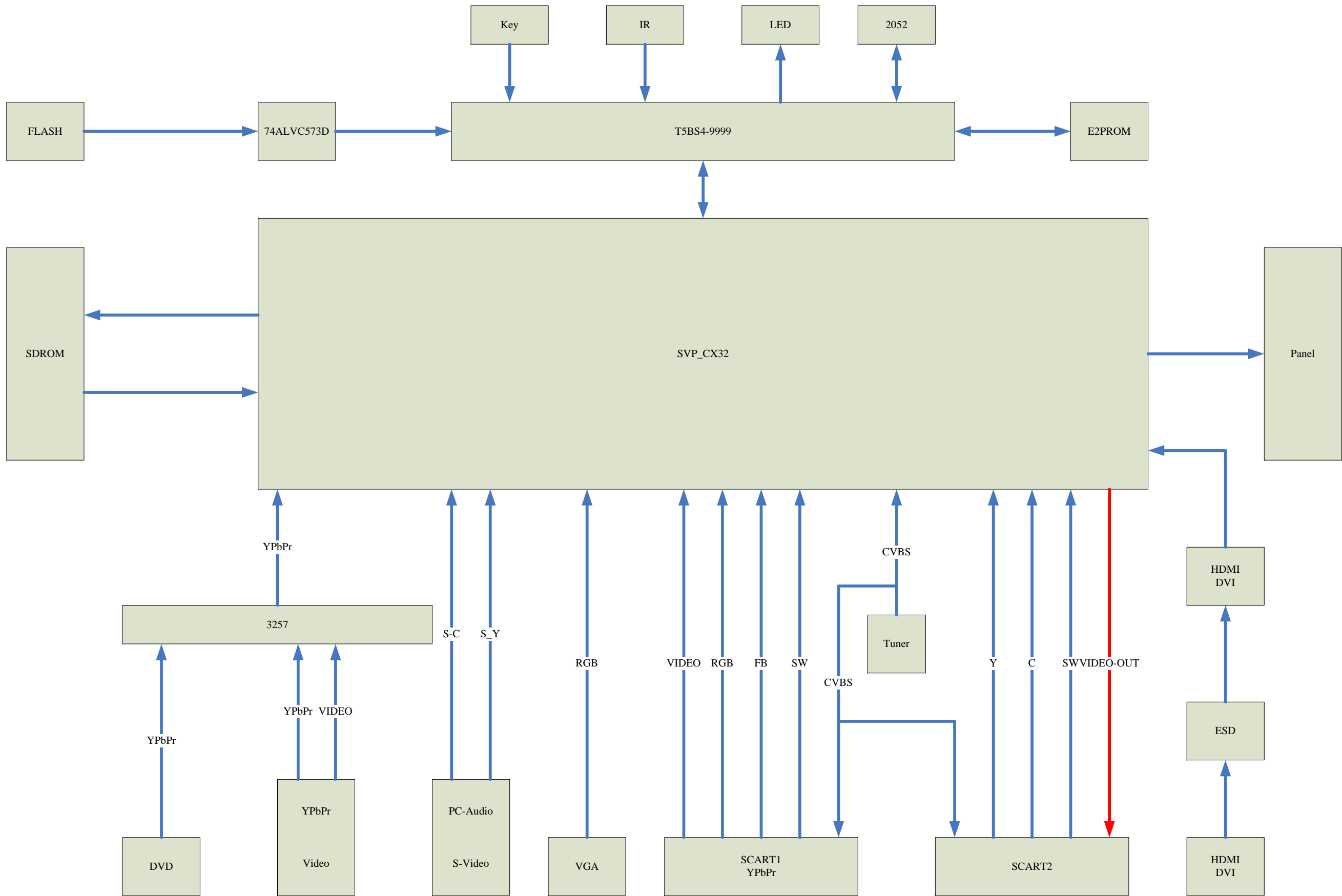
Title		
Size	Number	Revision
A		
Date:	19-Aug-2006	Sheet of
File:	C:\Documents and Settings\slilix\桌面\维修\PCB\原理图\B.TR.TD5A(0606011626)\B.TR.TD5A(0606011626).ddb	

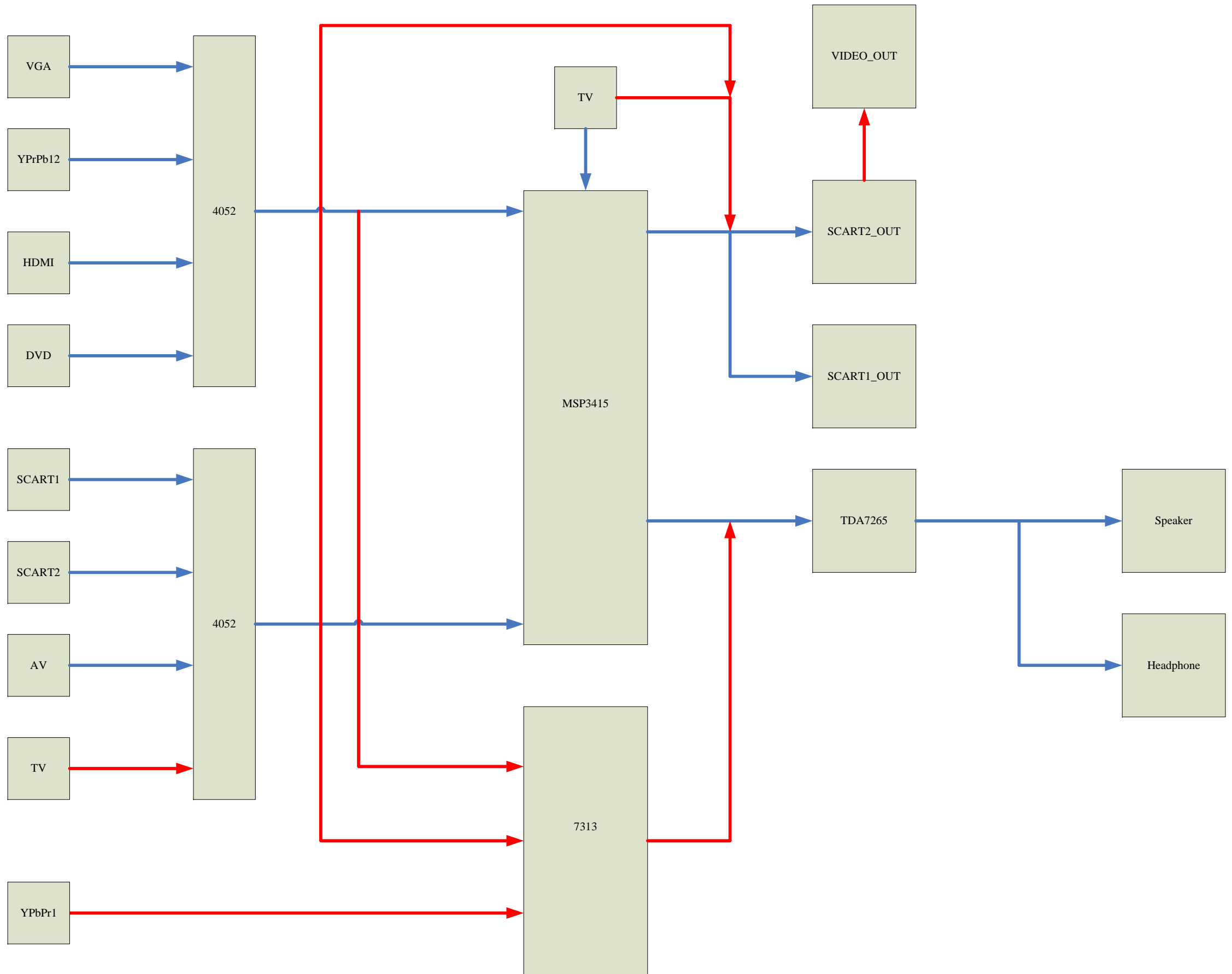


Title		
Size	Number	Revision
B		
Date:	19-Aug-2006	Sheet of
File:	C:\Documents and Settings\lixix\Desktop\维修PCB\原理图\B.TR.TD5A(0606011626).B.TR.TD5A(0606011626).d	



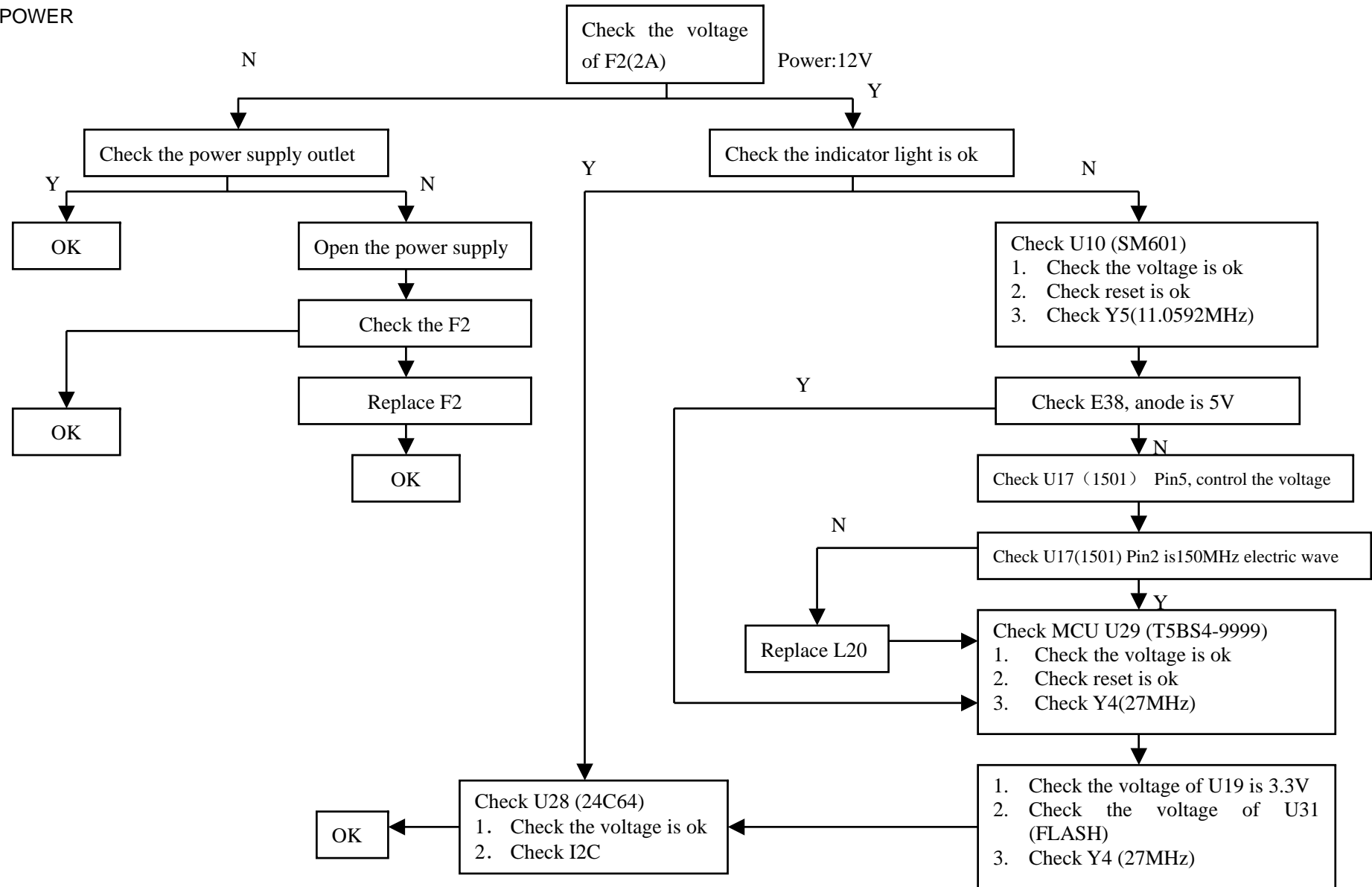
Title		
Size	Number	Revision
Date:	19-Aug-2006	Sheet of
File:	C:\Documents and Settings\lixia\Desktop\维修PCB\理图B.TR.TD5A(0606011626).B.TR.TD5A(0606011626).d	



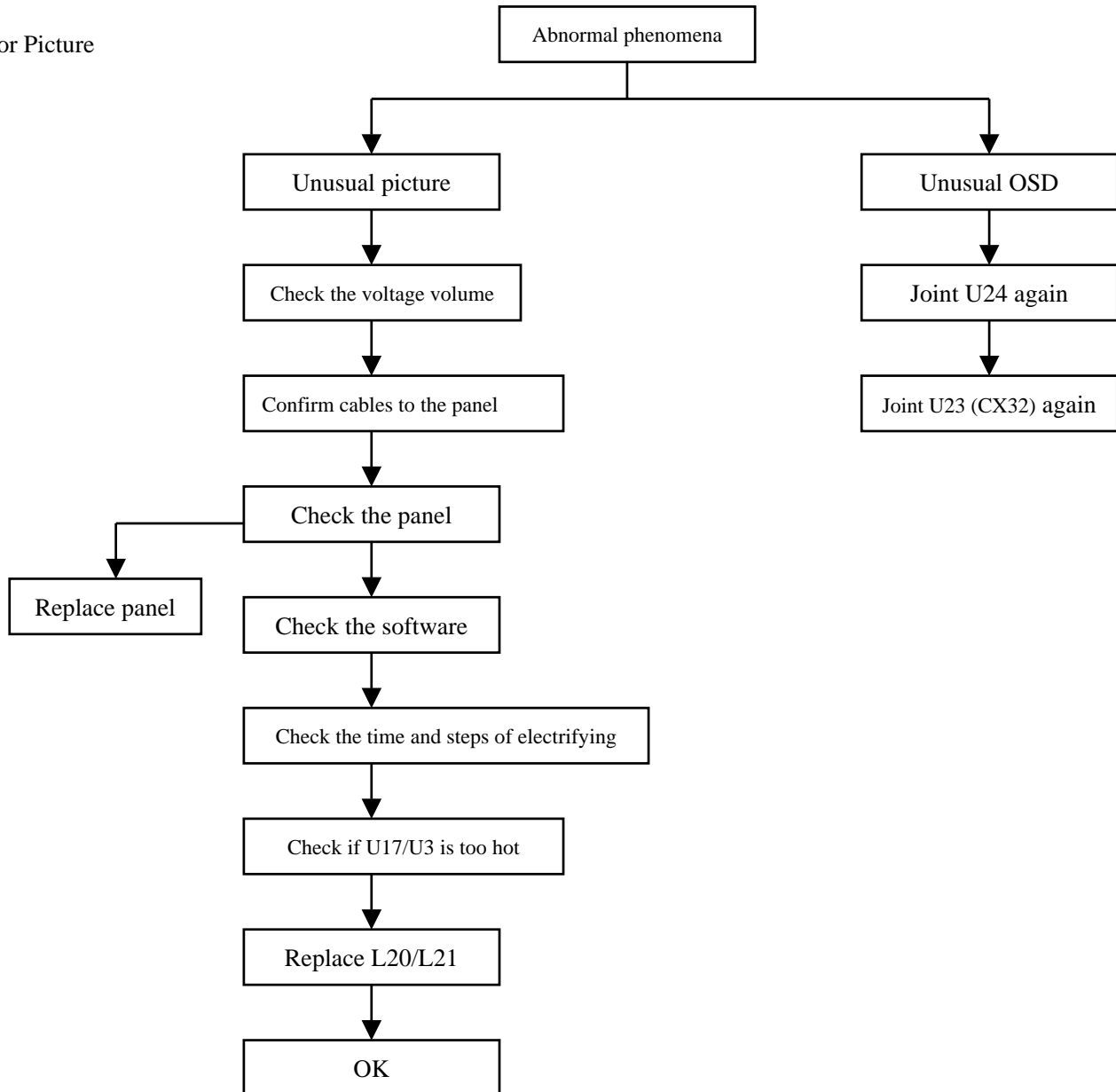


7- TROUBLESHOOTING

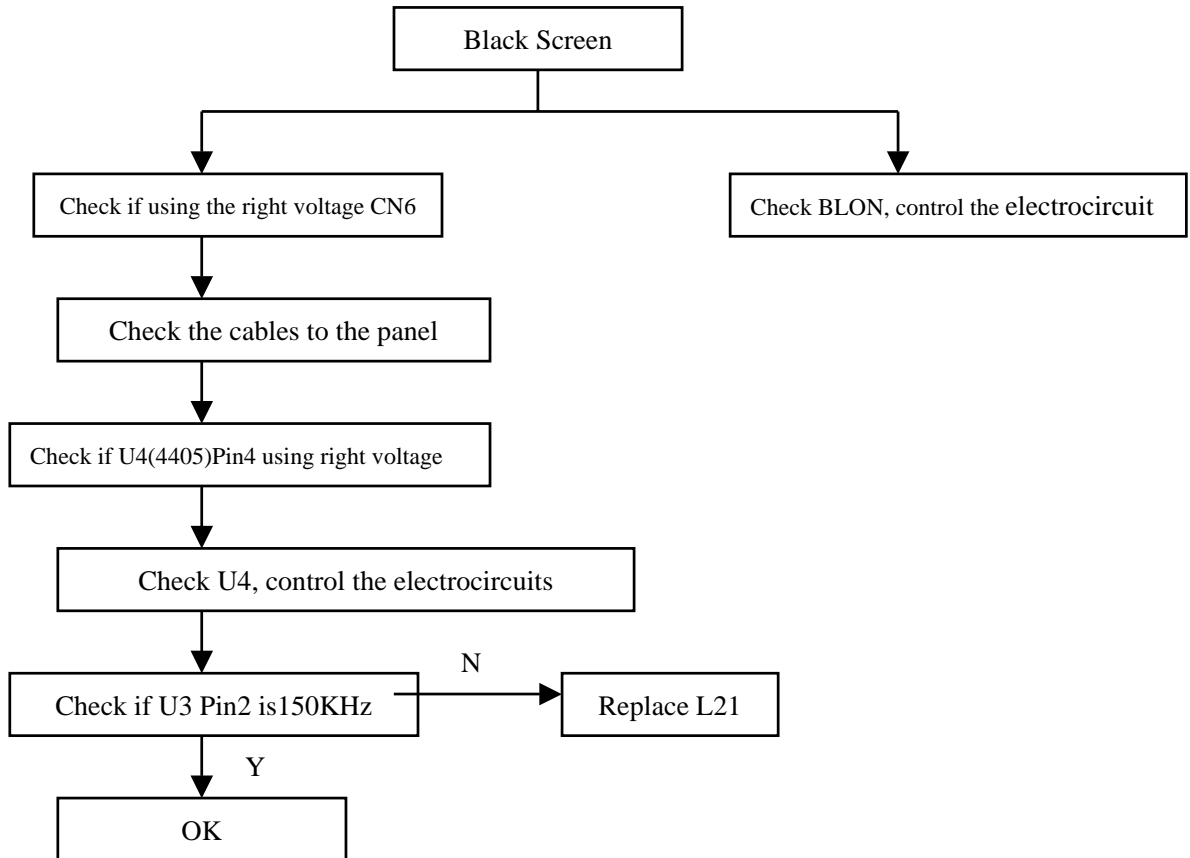
1. NO POWER



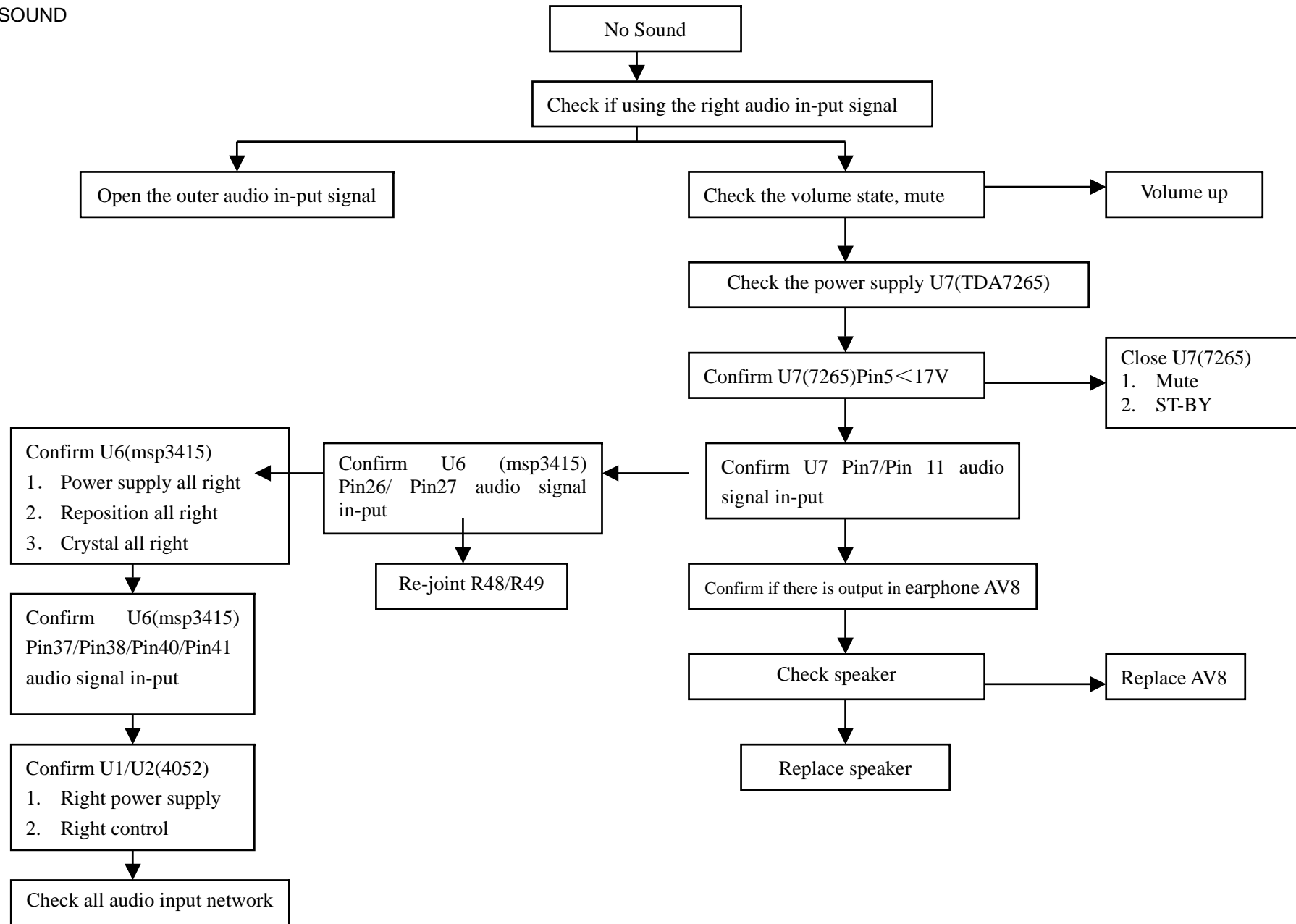
2. Poor Picture



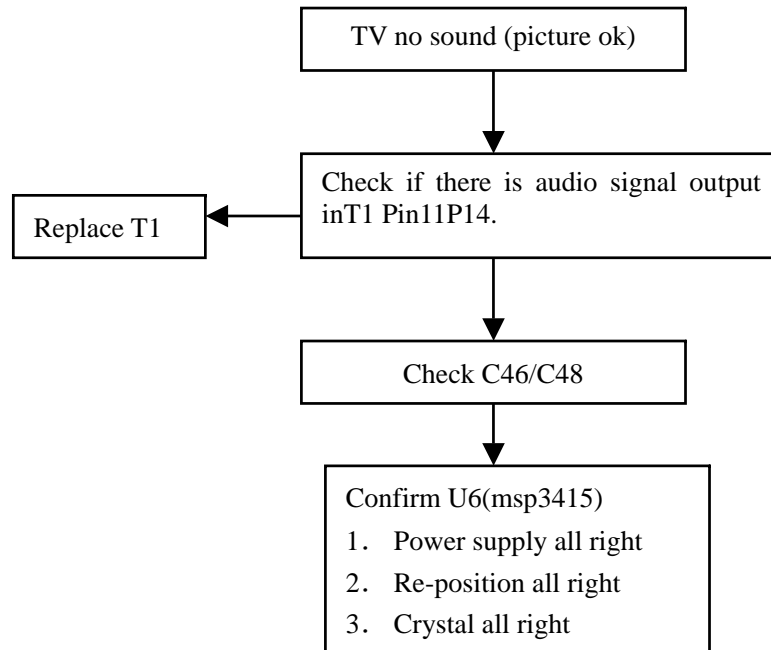
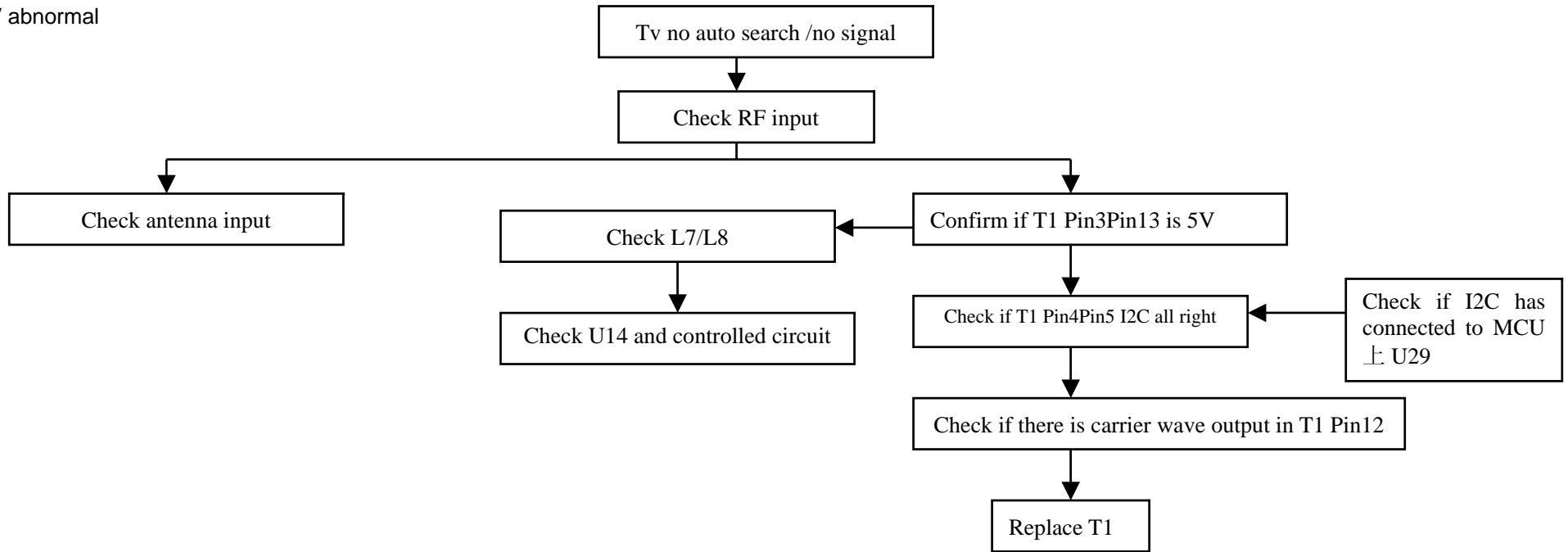
4. No Picture



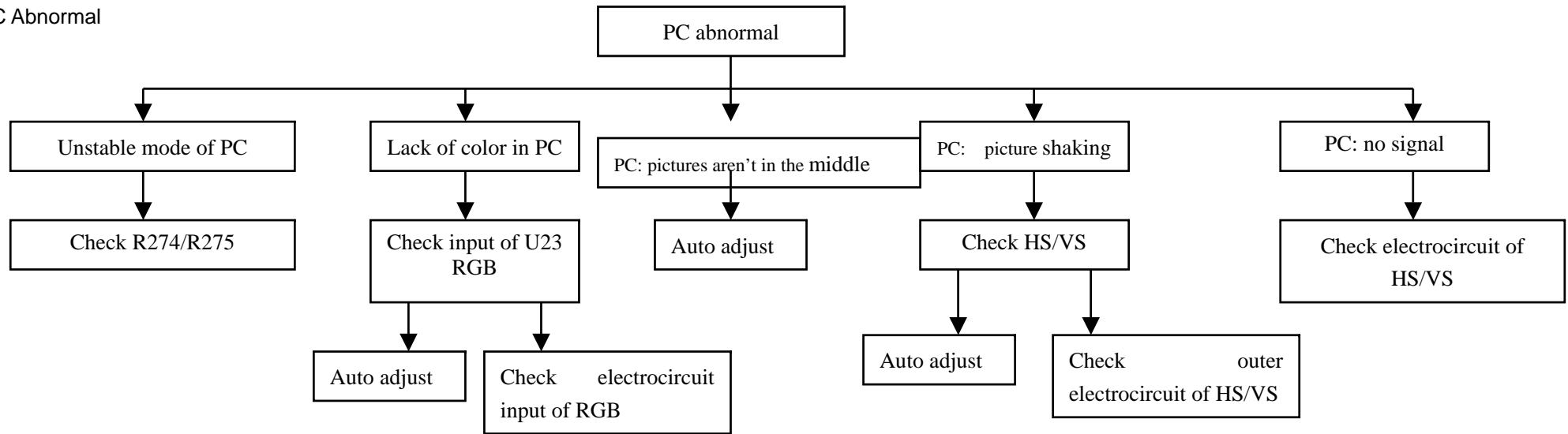
5. NO SOUND



6. TV abnormal



6. PC Abnormal



8. Abnormal signal from other interfaces

