



SERVICIOS VISTAMEX, S.A. DE C.V.

Industrial injection and assembly plant in Apaseo El Grande, Guanajuato, México



Autopista Querétaro – Irapuato Km 36
Zona Industrial CP 38160
Apaseo el Grande, Guanajuato
México

www.serviciosvistamex.com

Contacts

César Gutiérrez
General Director

Nathanael Bamas
Operation Director

Tel. (52) 461 6186100

Email : clientes@serviciosvistamex.com

Our proposal



Provide with services of manufacture and injection plastics parts to the industry in the Bajío area.



Why :

The evolution of little household appliances in the NAFTA market it forces to Groupe SEB company with world-wide brands likes (MOULINEX, KRUPS,) to decrease the operations in México.

Advantages



Personnel certify in injection and assembling products with more than 14 years of .experience in this process.



The high level of competition of its personnel, one heals to labor relation, recognized experience and an organization of world-wide class, allows a faster development, with smaller risks of its processes.

After 3 years, Vistamex, continues manufacturing households products for Groupe SEB exporting to USA and Europe directly, with IMMEX and PROSEC program.

Advantages



Excellent location in the center of the country with fast accesses to highway networks and ports to export and import, near manufacturing plants of the automotive industry and zones of permanent development.



Apaseo El Grande, Gto located in the center of the country :
to 40 Kms. of Querétaro, Qro.
to 96 Kms of Silao, Gto.
to 677 Kms. of Veracruz, Ver.
to 685 Kms. of Manzanillo, Colima
to 1,012 Kms. of Nuevo Laredo, Tamps.

Servicios Vistamex, S.A. de C.V. is allocated in one surface of 7,200 square meters, with all the necessary services as they are: warehouses, administrative offices, dining room, patio of maneuvers, own water well, plant of water treatment, network against fire.

Facilities :



Organization under a production system type "Reads effective Manufacturing" in the aeronautics industry and automotive. Process of continuous improvement of the productivity, quality, management of flows, etc.



Technology and Abilities.

Plastics Injections (34 machines of 30 up to 500 Ton.)

Paint Cabin.

Factory of manufacture and repair of molds

Assembling cells (with development and autonomy)

Center of engineering and product development

Certificate site in ISO/TS 16949 vs 2009 and ISO 9001 vs 2008

Injection equipment



TRADEMARK	TYPE	Year	Locking strenght	Mold thickness		Clearance between tie		Opening stroke	Platen centering		Ejection			Hydraulic pressure	nbre core	Diam screw	Additional Equipment
				mini	maxi	V	H		fixed	mobile	stroke	clamping	shrinkag				
BOY	30M	1986	30	210	360	255	255	300	110	110	80			160	1	28	Sepro PIP55
BOY	30M	1986	30	210	360	255	255	300	110	110	80			160	1	28	Sepro PIP55
BOY	30M	1986	30	210	360	255	255	300	110	110	80			160	1	28	Sepro PIP55
BOY	30M	1986	30	210	360	255	255	300	110	110	80			160	1	28	
BOY	50M	1986	50	260	450	305	305	350	125	125	80			160	1	32	Sepro PIP55
BOY	50M	1986	50	260	450	305	305	350	125	125	80			160	1	32	Sepro PIP55
BOY	50M	1986	50	260	450	305	305	350	125	125	80			160	1	32	Sepro PIP55
BOY	50M	1985	50	260	450	305	305	350	125	125	80			160	1	32	
DEMAG	25/80 Pro	1998	25	160	HYD	280	280	315	110	110	100				O	22	
DEMAG	25/80 Pro	1998	25	160	HYD	280	280	315	110	110	100				O	22	
DEMAG	800/400	1997	80	250	HYD	400	400	450	100	90	150	M16			O		
DEMAG	1500/610	1998	150	250	HYD	500	500	500	160	160	160			160	1	45	
DEMAG	1500/610	1998	150	250	HYD	500	500	500	160	160	160			160	1	45	
ENGEL	ES 200/50HL	1998	50	292	230	without columns		450	100	100	100				3	30	
ENGEL	ES 200/50HL	1998	50	292	230	without columns		450	100	100	100				3	30	
ENGEL	ES 200/50HL	1992	50	292	330	without columns		450	100	100	100				3	30	Sepro PIP55
ENGEL	ES 200/50HL	1992	50	292	330	without columns		450	100	100	100				3	30	Sepro PIP55
ENGEL	ES 200/50HL	1992	50	292	330	without columns		450	100	100	100				3	30	Sepro PIP56
ENGEL	ES330/80HLS	1996	80	250	HYD	without columns		450	125	125	100	M16	12		1	35	
ENGEL	ES700/200	1996	200	150	560	450	540	460	100	100	150	M16	9.5		3	50	Sepro PIP85
ENGEL	ES1300/300	1997	300	290	760	635	635	600	175	140	200	M16	12	160	1	70	
ENGEL	ES1300/300	1997	300	290	760	635	635	600	175	140	200	M16	12	160	1	70	Sepro PIP85
ENGEL	ES1300/300	1997	300	290	760	635	635	600	175	140	200	M16	12	160	1	70	
ENGEL	ES1300/300	1996	300	290	760	635	635	600	175	140	200	M16	12	160	1	70	Sepro PIP85
ENGEL	ES1300/300	1996	300	290	760	635	635	600	175	140	200	M16	12	160	1	70	Sepro PIP85
ENGEL	ES1300/300	1996	300	290	760	635	635	600	175	140	200	M16	12	160	1	70	Sepro PIP85
ENGEL	ES1300/300	1996	300	290	760	635	635	600	175	140	200	M16	12	160	1	70	Sepro PIP85
ENGEL	ES1300/300	1996	300	290	760	635	635	600	175	140	200	M16	12	160	1	70	Sepro PIP85
ENGEL	ES1300/300	1995	300	290	760	635	635	600	175	140	200	M16	12	160	1	60	Sepro PIP85
ENGEL	ES2000/470	1996	470	300	960	840	840	700	200	250	240	M16	9.5	160	3	70	Sepro 3030AZ
ENGEL	ES2000/470	1992	470	300	960	840	840	700	200	250	240	M16	10.5	160	3	70	SeproPIP 250BZ
ENGEL	ES2000/470	1992	470	300	960	840	840	700	200	250	240	M16	11.5	160	3	70	SeproPIP 250BZ
ENGEL	ES 2000/500	1997	500	300	1100	840	880	700	175	175	240	M16	12	140	3	70	Sepro 3030AZ
ENGEL	ES 2000/500	1997	500	300	1100	840	880	700	175	175	240	M16	12	140	3	70	Sepro 3030AZ

Additional equipment
by injection machine:

Termoregulator
Dryers
Color pigment
Belt Conveyor

Others equipments

2 Dehumidify
3 Traveling derrick (3.2 to 6 Tons.)
20 Equipments of hot runner
5 Grinders

Vistamex offer a insurance policy for protect the molds by \$100,000 USD



Injection Techniques:

Horizontal Injection and sizes molds from 0.1 to 5 Tons.

1 to 32 Multi-cavity injection

8 Hot zones Cold runners

Mold Type:

Hydraulic System 3 Programs

Cold & Hot runner

Over mold insert and material Elastomer

Molds with 3 plates

Type of materials:

Natural Thermoplastics, with charge, PP, PP30% FG, PP15% FG+25%MC, PC, PC transparent, ABS, PBT FG, PPS, PA, PA FG, POM, PS, SAN, PE, Thermoplastics Elastomer



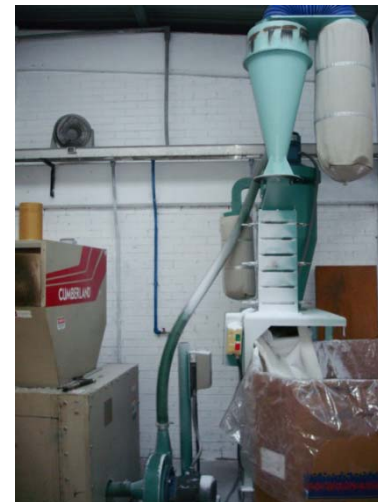
Types of parts produced:

Wall thicknesses from 0.8 to 5 mm



Recycling procedure

In thermoplastic processes we use the recycling processes according with the specification of pieces (5 to 20%)



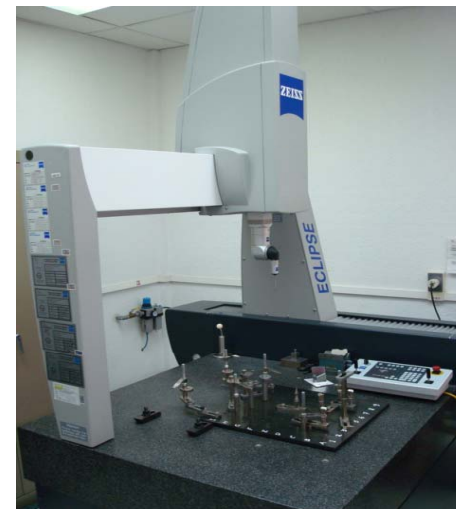
Facilities :

Manufacture and repair of toolboxes for the industry in general. Our personnel this enabled for the design, manufactures and changes of engineering of its molds.



Laboratory equipment

3 D measurement machine Zeiss
Laboratory controlled by humidity and temperature
Tool calibration equipment



Mechanical tool shop equipment



EQUIPMENT	TRADEMARK	MADE IN	VOLTEO	Distance in points	Work area			TABLE		Maximum Wage
					X	Y	Z	X	Y	
Erosive	Charmilles	Swezeland			300	270	300	400	300	400 Kg
Electroerosion	Erocom	Germany			600	350	500	750	500	400 kg
Flat grinding machine	Hanseat	Germany			710	300	400	710	300	
Flat grinding machine	Jung	Germany			700	180	250	700	200	
CNC	Cincinatti	USA			1000	450	500	1120	500	
CNC	Haas	USA			1000	400	500	1220	460	
Conventional cutter	Huron	France			1500	600	420	2000	460	
Conventional cutter	Dufour	France			860	400	400	1500	340	
Conventional cutter	Deckel	Germany			800	400	400	1000	500	
Cylindrical grinder	Tachella	Italy	152	700						
Cylindrical grinder	CC	France	125	500						
Parallel lathe	Weiler	Germany	160	700						
Parallel lathe	Weipert	Germany	270	120						
Parallel lathe	Cholet	France	220	110						
Sandblast equipment	godde	Germany			500	500	300			
Taladro Radial	godde	Germany						1000	500	1500 kg
Durometro	Wilson									
Crane traveler	Hercules									3.2 Ton
Crane traveler	Irrsa									6.3 Ton
Crane traveler	Hormiga									6.3 Ton
Crane traveler	Semic									4.5 Ton
Welding for argon	Uniarc	Germany								
Oven for heat treatment	godde	Germany								
Sierra cinta	godde	Germany			600		250			
Sierra mecanica	Ultra	France								
Welding equipment in cold	Novapax	Swezeland								
Court equipment Oxiacetilenico										
Pump water leak test										
Workstation CAD y CAM	Whit Unigraphics VNX3, for design and Engineering changes.									
Pump hydraulic test run										

Dimension of work areas in mm.



Manufacturing Knowledge :

Precision parts in centesimal.

Post Injections Process :

- Heat transfer
- Hot Stamping
- Serigraphy
- Mirror Welding
- Ultrasound Welding
- Bounding Process (Silicones, Adhesives)
- Painting Process



Quality Process and rates :

SPC APQP PPAP PSW
Quality certification Valeo 1000

Scrap rate 1.8% in thermoplastic (flash, incomplete pieces, plastic deformation, out of tone)
Recycling process for thermoplastic
Mold swapping procedures only cleaning in thermoplastic
Safety products (cUL NOM CE)

Maintenance process :

3 Levels of maintenance in molds
Annual plan of maintenance in injection equipment

Import and export agreements:

Immex
Prosec

Our Customers :



KASAI MEXICANA



Actual capacity :

1,137,135 finish household products

27'875,123 plastics parts

Injection area 18% of availability considering from Monday to Saturday.

Assembling area 67% of availability considering from Monday to Saturday.

Utilization equipment by Tons.

Qty.	Tons.	Act. Ocup.	Disp. Ocup.
6	25	74%	26%
8	50	56%	44%
2	80	65%	35%
2	150	81%	19%
3	200	76%	24%
7	300	79%	21%
6	500	83%	17%
		73%	27%

Number of mold by customer

Company	Qty.	% by Cust.
SEB	84	33%
MABE	76	29%
VALEO	38	15%
NORGREN	19	7%
BURNER	16	6%
KASAI	2	1%
OTHERS	23	9%
Total	258	100%

Monthly plastics material process in injection 152.8 Tons.

* Capacity percentage at the current working calendar

Sales by year:

2008 \$5,420 KUSD

82% in little electrical appliances
6% in automotive parts
12% in industry and frigo components

2009 \$ 7,272 KUSD

64% in little electrical appliances
8% in automotive parts
28% in industry and frigo components

2010 \$ 11.473 KUSD

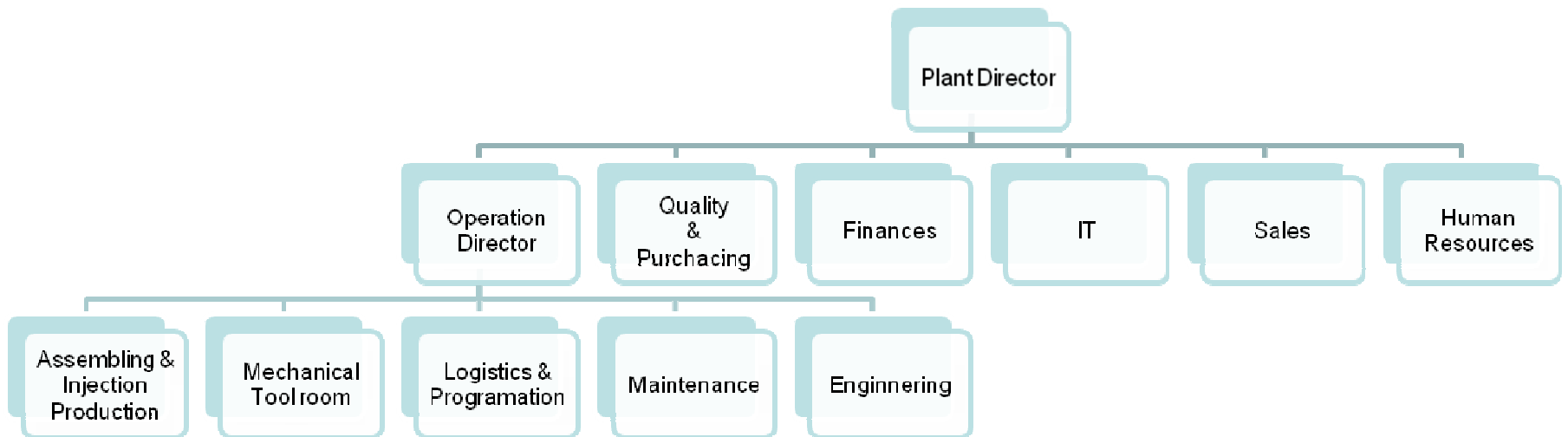
47% in little electrical appliances
14% in automotive parts
39% in industry and frigo components



To increase the level of sales in 2011,
Vistamex is working with some supplier in
the acquisition of one machines of 500 and
1,000 Tons.



Organization Chart :



Current headcount 153 personnel



For additional information about our organizational chart, production process, quality aspects, please refer to our Quality Manual

If you need further or detailed information for your process do not hesitate to contact us.

Thanks.