

SETCO'S SPINDLE & SLIDE REBUILD CAPABILITIES



CORPORATE OFFICE

5880 Hillside Avenue
Cincinnati, OH 45233
(513) 941-5110
1 (800) 543-0470 Toll-Free
www.setco.com

- ✦ We Repair & Rebuild Almost Any Machine Tool Spindle
- ✦ Domestic, OEM, and Custom Spindles
- ✦ Belt-driven, CNC, Geared & Motorized Designs
- ✦ Expert High Speed Spindle Service
- ✦ Urgent Care Spindle Rebuild Services
- ✦ On-site Spindle Vibration Analysis & Balancing
- ✦ Nine Strategically Located Spindle Centers
- ✦ Slide Rebuilds & Reconditioning

NORTH AMERICAN SERVICE CENTERS

- ✦ WESTERN SERVICE CENTER
5572 Buckingham Drive
Huntington Beach, CA 92649
(714) 372-3730
1 (866) 362-0699 Toll-Free
- ✦ GREAT LAKES SERVICE CENTER
41129 Jo Drive
Novi, MI 48375
(248) 888-8989
1 (877) 773-5349 Toll-Free
- ✦ MIDWEST SERVICE CENTER
5880 Hillside Avenue
Cincinnati, OH 45233
(513) 941-5110
1 (800) 543-0470 Toll-Free
- ✦ SOUTHEAST SERVICE CENTER
2402 Tech Center Pkwy, Suite 200
Lawrenceville, GA 30043
(678) 407-6206
1 (800) 830-4992 Toll-Free

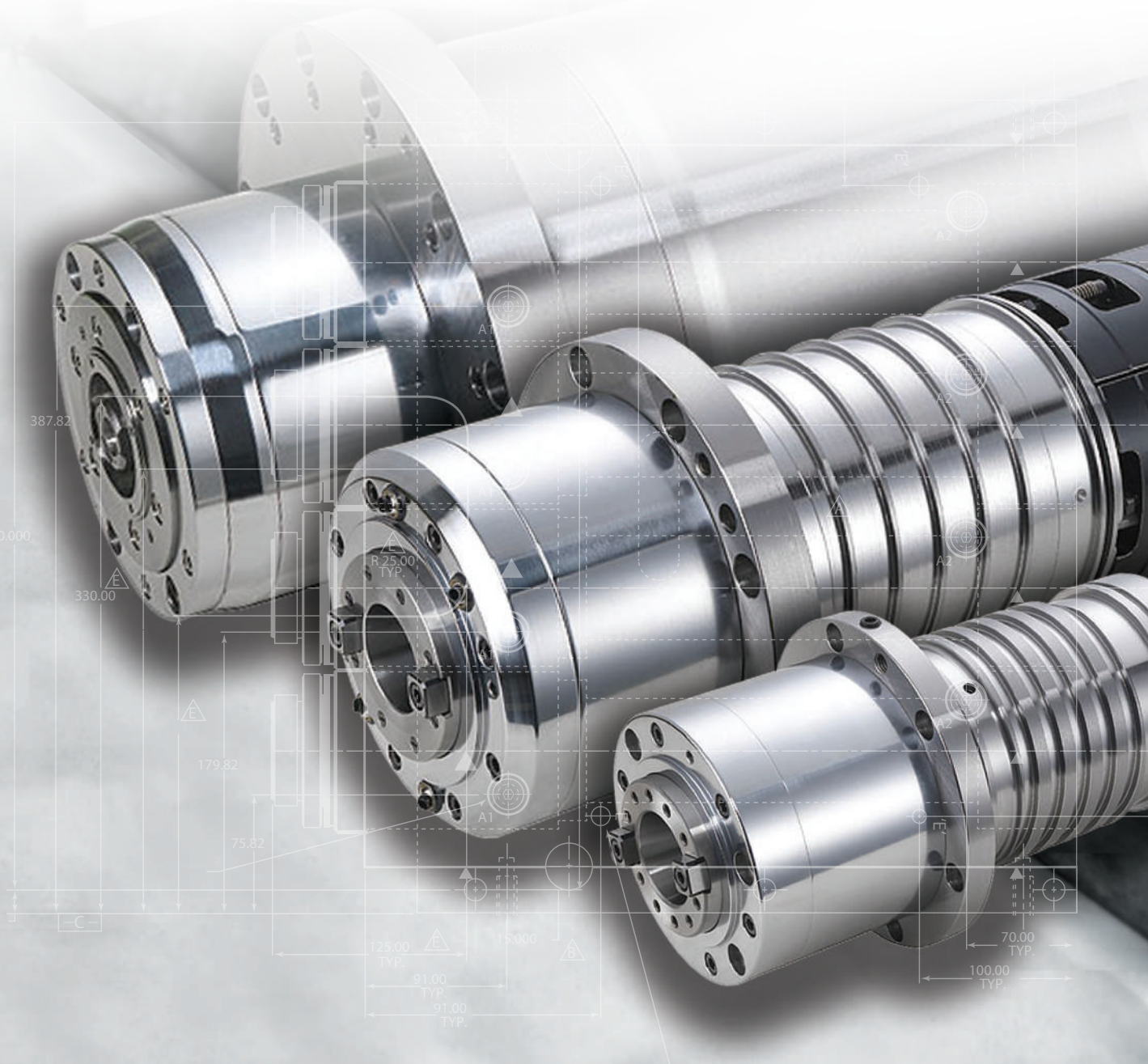
ASIA SERVICE CENTERS

- ✦ INDIA WEST SERVICE CENTER
D1-4/8, S No 15/2,
GKD Industrial Estate,
Nanded Village,
Pune 411041
0091 20 6470-2938
- ✦ INDIA NORTH SERVICE CENTER
Pvt Ltd Sector 7,
Plot No130 IMT Manesar,
Dist Gurgaon Pin ,
New Delhi 122051
9921360247
- ✦ INDIA EAST SERVICE CENTER
No.3C, K.K Street,
Kasturi Nagar,
Ayanambakkam,
Chennai - 600 095
919962920917
- ✦ CHINA SERVICE CENTER
No. 16, Lane 88, Fengnian Rd
Malu Town, Jiading District
Shanghai 201801, P. R. China
- ✦ TAIWAN SERVICE CENTER
No.15, jingke Central 2nd Rd
Taichung 408, Taiwan, R.O.C.
04-2358-1678

SPINDLE BRANDS SETCO REBUILDS

- | | | | | | | | |
|------------------|----------------|----------------|-----------------|---------------|-----------------|-----------------|--------------|
| ABRASIVE | COLONIAL | FRANZ KESSLER | IMC | LIAN-FENG | OKK | SCM | TOS-HOSTIVAR |
| AETNA | COLUMBO | FRAUENTHAL | IMF | LIDKOPING | OKUMA HOWA | SECO | TOYO KOGYO |
| AGATHON | COMBING | GALLMEYER & | IMP | LIMA | OLIVER | SEIKO | TOYODA |
| AGT | COMEC | LIVINGSTON | IMPCO | LINCO | OLOFFSON | SEIKO SEIKI | TRAMINER |
| ALPINE | COVEL | GAMFIOR | INCOR | LOH-GMN | OMLAT-TORINO | SETCO | TRAUB |
| ANAYAK | CYTEC | GARDNER | INDEX | MAAG | ONSRUD | SFJ | TREE |
| ARROW | DAEWOO | GILDEMEISTER | INGERSOLL | MAHO | Ooya | SHAPER | TRUFUTE |
| ASHAI | DAINICHI | GILMAN | INVINCIBLE | MANEX | ORION | SHEFFIELD | TSCHUDIN |
| ASV | DANOBAT | GIORDONA | IONIC | MASCO | ORTUNA | SHEFFIELD | TSUGAMI |
| ATLAS | DEARBORN | GLEASON | JAGER | MASTER | OVERBECK | SHIGYA | ULAM |
| AVON | DECKEL MAHO | GMN | JET | MATRIX | PAATZ | SHINO | UNISON |
| BARBER COLEMAN | DEMER | GMS | JOHN FORD | MATSUURA | PANGBURN | SHIZOUKA | UVA |
| BARNES | DEPENDABLE | GOMIYA | JONES & SHIPMAN | MATTISON | PARKER MAJESTIC | SHODA | VAN NORMAN |
| BAYER | DEUSCHLE | GRISSETTI | JUNG | MAXIM | PARVEX | SIARTO-SICAR | VICTOR |
| BEHR | DIBOLD | GROB | JUNGER | MAZAK | PBA | SIGA | VOLLMER |
| BERTONI & COTTI | DOALL | GROS-ITE | K.O. LEE | MCM CLOCK | PBS | SIGMA | VOUMARD |
| BIESSE | DOOSAN | HAAS | KAO | MEI SYSTEMS | PERSKE | SIMPLEX | VULCANAIRES |
| BLAKE | DROOP & REIN | HARDINGE | KASPER | MEIDEN | PIAT | SINTEX | WADKIN |
| BLANCHARD | DRR | HARIG | KELLENBERGER | MIGHTY COMET | PITTLER/KESSLER | SJOGREN SAGINAW | WAGNER |
| BLOHM | DUMORE | HARIL | KELLER | MIKRON | POPE | SKF | WAIDA |
| BOEHRINGER | DUNHAM | HARVILL | KENT | MILLTRONICS | PORTER | SMG | WALTER |
| BONEHAM & TURNER | EKSTROM | HAUSER | KENWARD | MITSUBISHI | PRATT-WHITNEY | SOPKO | WARD |
| BOWEN | ELB | HAWK | KESSLER | MITSUI | PRECISE | SPINTEC | WARDELL |
| BOYER-SCHULTZ | ELDORADO | HEALD | KIKINDA | MITSU-SEIKI | RAMBAUDI | SPRINGFIELD | WASINO |
| BRIDGEPORT | ELLIOT | HELLER | KINDT | MIYANO | RANSBURG | STAMA | WEDALCO |
| BROTHER | ELMO | HEMBURG | KINGSBURY | MONARCH | REID | STANDARD | WEISS |
| BROWN & SHARPE | EMAG | HEMPLE | KIRA | MOORE | REINECKER | STEINMETZ | WEISSER |
| BRYANT | ENSHU | HERBERT LINDER | KITAGAWA | MORI SEIKI | REISHAUER | STEP-TEC | WENTD |
| C.B. FERRARI | EUROTECH | HERBOLD | KITAKO | MYFORD | RIGID | STOFFEL | WENZLER |
| CAMPBELL | EVERITE | HERMLE | KITAMURA | MYL | RIVETT | STUDER | WEST WIND |
| CANTON | EWAG | HERTLEIN | KIWA | NAKAMURA TOME | ROCKWELL | SUGAMI | WHACEON |
| CARLSON | EXCELLO | HESSALL | KLINGELNBERG | NEO | ROKU ROKU | SUHNER | WHEELABRATOR |
| CARLTON | EXCELLON | HILLYER | KOLB | NEWELL | ROMAI | SUMMIT | WHITTON |
| CARVER | FADAL | HIMMEL | KOMO | NICHOLS | RONOS | SUN TOOL | WICKMAN |
| CHEVALIER | FALCON | HITACHI | KONDIA | NIGATA | ROSS | SUPAFINA | WILLEMIN |
| CHIRON | FALVA | HITACHI SEIKI | KOYO | NILES | ROYAL OAK | SWISS-LATHE | WIT-O-MATIC |
| CHURCHILL | FANUC | HMC | KRUGER | NIPPPEE | RUDEL | TAFT PIERCE | WOODS |
| CINCINNATI | FASSLER | HOLZMA | KUMER | NISSEN | SABRE | TAI-CHIN | YACHYIO |
| CINEX | FAVETTO | HOWA | KURAKI | NORMAC | SAIMP | TAKATORI | YAM |
| CITIZEN | FELLOWS FEMCO | HUFFMAN | LAMB | NORTON | SAINT GOBAIN | TAKISAWA | YAMADA |
| CLEERMAN | FEMINA | HURCO | LANCER | NSK | SAMSUNG | TECHNICATEMPO | YAMAGUCHI |
| CLEVELAND | FIDIA | HYDROMAT | LANDIS | NTC | SATISLOH | THEMAC | YAMAZAKI |
| COBURN | FISCHER | HYUNDAI | LASALLE | OVERG | SAVWAY | THOMPSON | YCK |
| COLLINS | FORTUNE VICTOR | IBAG | LEADWELL | OERLIKON | SCHNEIDER | THOR | ZIMMERMAN |
| COLMATIC | FOSDICK | IKEGAI | LEBLOND MAKINO | OKAMOTO | SCHUSSLER | TOSHIBA | ZPS |

SPINDLES



COMPANY HISTORY

Over 100 years of manufacturing high performance precision spindles and slides

For over 100 years -- since 1912 -- Setco has been a U.S. leader in the design, manufacture, & service of high performance precision spindles and slides. Our products include belt-driven spindles, direct-drive spindles, motorized spindles, gear-driven spindles, compound spindles for turning and milling, single-axis and multi-axis milling heads, and complete lines of dovetail slides, hardened way slides, linear guideways, and tooling slides. Setco products are recognized worldwide for accuracy, durability, and quality.

Setco is the largest independent manufacturer of precision spindle in the U.S. and offers complete repair, rebuilt, and retrofit service. To better serve globally, we have set up 9 spindle service centers in North America, Taiwan, India, and China providing professional technical and repair service.

In 2012 Setco acquired Neo Precision and established the Precision Series Spindle Line. Setco Taiwan is located in Taichung City Precision Machinery Innovation Technology Park and strives to become the highest quality spindle provider. Setco's precision spindle line includes direct-drive spindles, motorized spindles, and a series of milling heads. Setco cooperates with well-known international companies from Japan and Europe to improve manufacturing process, elevate the quality of our products, and enhance staff's skills. In 2017, Setco acquired German company, Headtec, to provide better products and service.

In regard to China market, Setco set up Shanghai service center in 2015 offering direct and prompt sales and repair service to customers in China. In addition, to serve customers in India, Setco acquired UPSPL in Pune, India in 2012 and set up the first India service center. We set up the second service center in Chennai, India in 2015. To support expanding business, Setco starts the newly added third service center in New Delhi, India in 2019.

Setco provides technical support for the following market segments:

- ⊕ Machine Tool Manufacturers
- ⊕ Special Machine Tool Builders and Integrators
- ⊕ Power Train Machinery Manufacturers and End Users
- ⊕ Industrial End Users in General

Mission Statement

A global precision spindle solutions and support network, partnering with customers to maximize productivity.

SPINDLES

MILLING



PG 3

MOTORIZED AC PG 3

MOTORIZED DC FOR MILLING HEADS PG 7

MOTORIZED MILL-TURN PG 8

DIRECT DRIVE PG 10

 MILLING PG 10

 TAPPING PG 13

DIRECT DRIVE MILL-TURN PG 15

BELT DRIVE PG 16

TURNING



PG 19

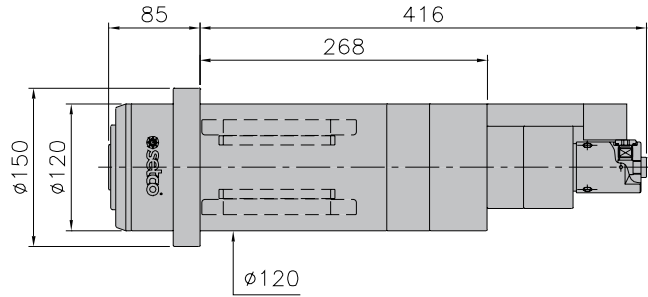
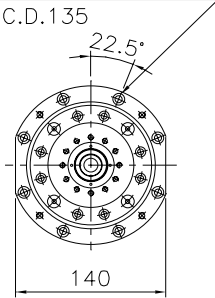
MOTORIZED PG 19

BELT DRIVE HORIZONTAL PG 20

BELT DRIVE VERTICAL PG 22

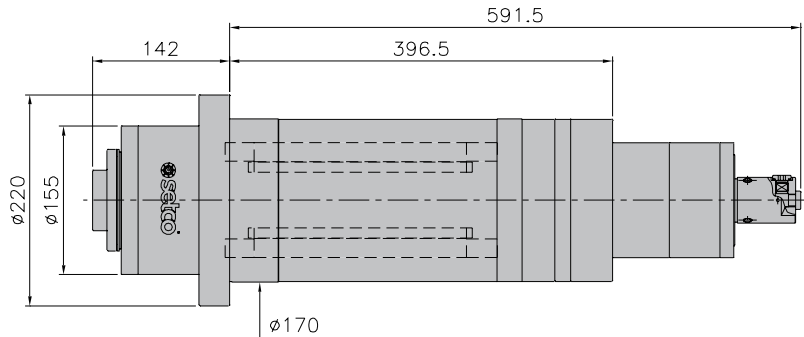
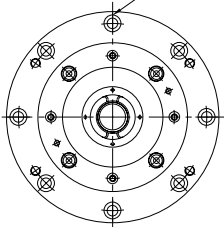
231A ///

8- ϕ 6.6 THRU
C/Bore ϕ 11X6.5 DP.
P.C.D.135



255A ///

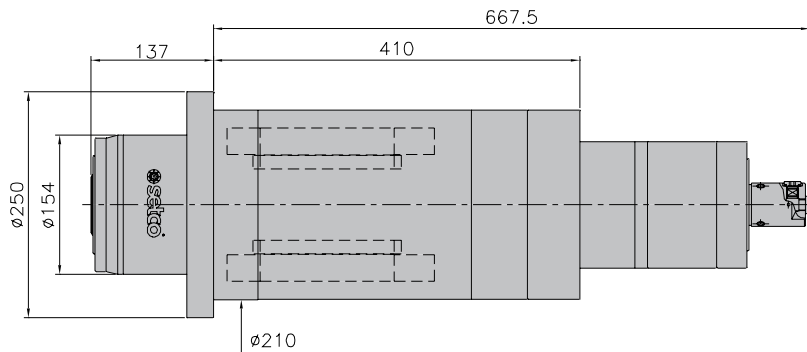
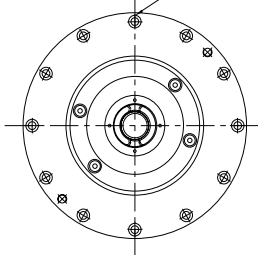
8- ϕ 11 THRU
C/Bore ϕ 17.5X11 DP.
P.C.D.195



ITEM/MODEL		231A	255 A
Max Speed	(rpm)	24000 / 30000	15000 / 24000
Tool System		ISO #30 / HSK E40	HSK A63
Bearing	(mm)	ϕ 45	ϕ 70
Lubrication		Grease / Oil-Air	Grease / Oil-Air
Housing Dia.	(mm)	ϕ 120	ϕ 170
Spindle Nose	(mm)	85	142
Total Length	(mm)	501	733.5
Motor Name		ATE	ATE
Motor Type		AC 90 / 100 / 4	AC120 / 220 / 6
Power	(kW)	7.5 / 9	25 / 31
Rate Torque	(Nm)	6 / 7.2	40.1 / 50.1
Option		CTS	CTS / Air Shield

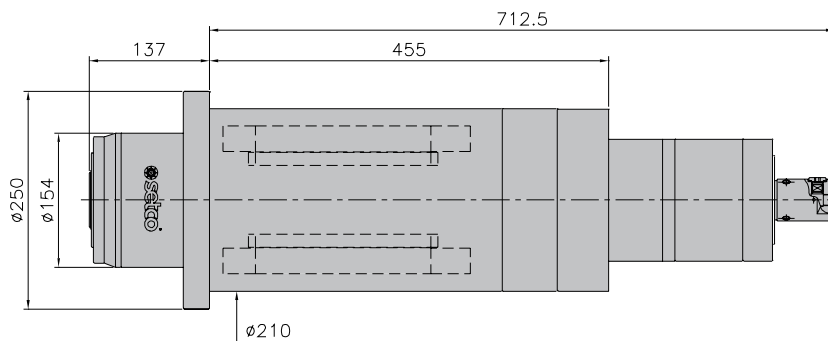
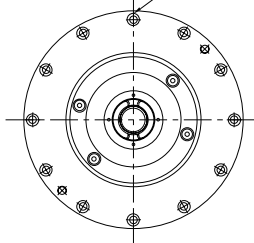
243A ///

12- $\varnothing 9$ THRU
C/Bore $\varnothing 14 \times 8.6$ DP.
P.C.D.230



222A ///

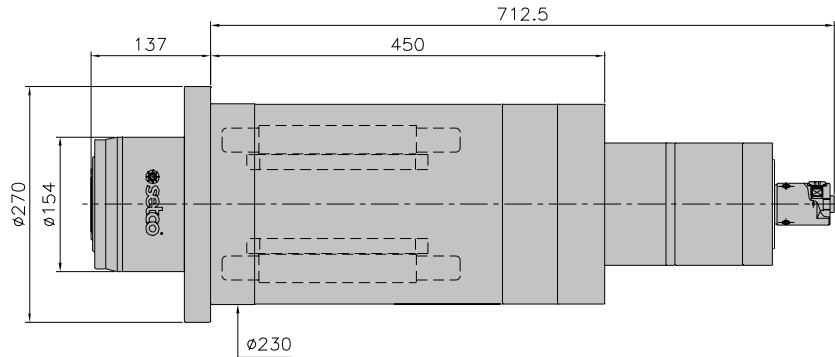
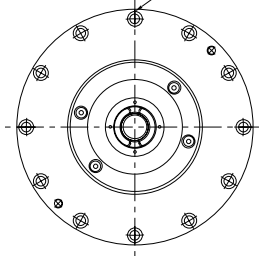
12- $\varnothing 9$ THRU
C/Bore $\varnothing 14 \times 8.6$ DP.
P.C.D.230



ITEM/MODEL		243A	222A
Max Speed	(rpm)	24000	15000 / 20000 / 24000
Tool System		ISO #40 / HSK A63	ISO #40 / HSK A63
Bearing	(mm)	$\varnothing 70$	$\varnothing 70$
Lubrication		Oil-Air	Grease / Oil-Air
Housing Dia.	(mm)	$\varnothing 210$	$\varnothing 210$
Spindle Nose	(mm)	137	137
Total Length	(mm)	804.5	849.5
Motor Name		ATE	ATE
Motor Type		AC 170 / 150 / 4	AC 170 / 200 / 4
Power	(kW)	18.5 / 21.5	25 / 29
Rate Torque	(Nm)	61.8 / 72.3	83.2 / 99.3
Option		CTS / Air Shield	CTS / Air Shield

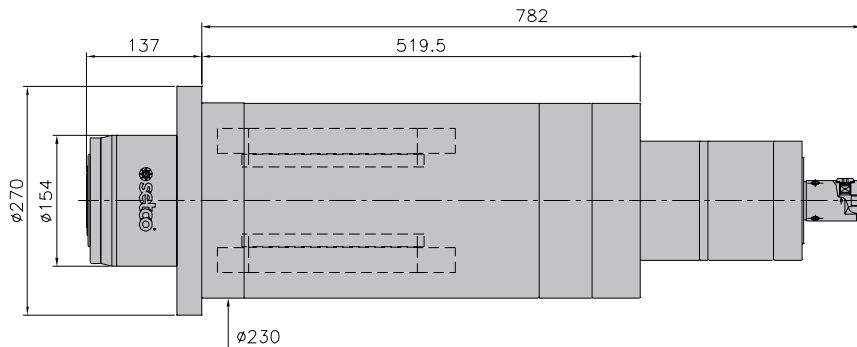
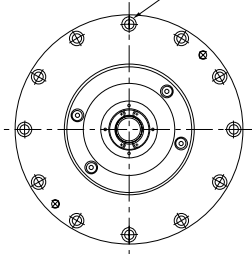
225A ///

12- ϕ 11 THRU
C/Bore ϕ 17.5X10.8 DP.
P.C.D.248



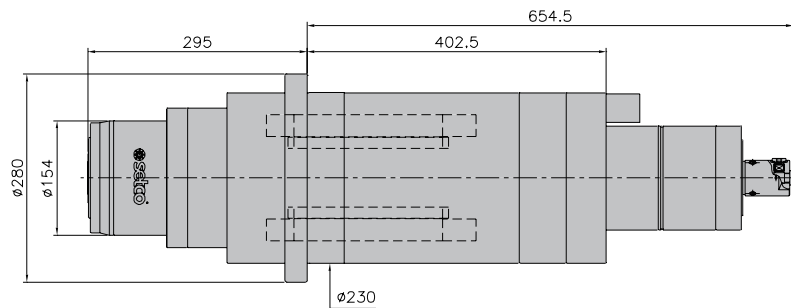
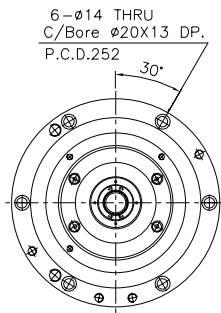
223A ///

12- ϕ 11 THRU
C/Bore ϕ 17.5X10.8 DP.
P.C.D.248

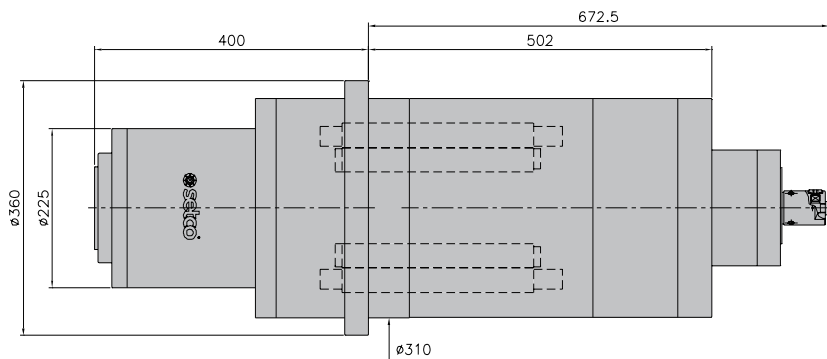
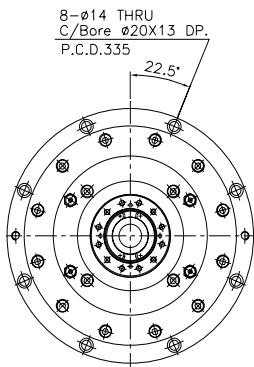


ITEM/MODEL	225A			223A			
Max Speed (rpm)	15000 / 16000 / 20000 / 24000(ATE Motor)			12000 / 15000 / 20000 / 24000(ATE Motor)			
Tool System	ISO #40 / HSK A63			ISO #40 / HSK A63			
Bearing (mm)	ϕ 70			ϕ 70			
Lubrication	Grease/ Oil-Air			Grease / Oil-Air			
Housing Dia. (mm)	ϕ 230			ϕ 230			
Spindle Nose (mm)	137			137			
Total Length (mm)	849.5			919			
Motor Name	FANUC	ATE		FANUC	FANUC	ATE	mitsubishi
Motor Type	Bil 112M / 20000	AC 170 / 200 / 4		Bil 112L / 15000	Bil 112L / 20000i	AC 170 / 200 / 4	SJ-2B4322TKH
Power (kW)	10 / 15 / 18.5	25 / 29		18.5 / 18.5	15 / 18.5 / 22	25 / 29	15 / 18.5 / 22
Rate Torque (Nm)	63.7 / 95.5	83.2 / 99.3		95 / 118 / 167	79 / 98 / 118	83.2 / 99.3	79.6 / 88.3 / 118
Option	CTS / Air Shield	CTS / Air Shield		CTS / Air Shield	CTS / Air Shield	CTS / Air Shield	CTS / Air Shield

220A ///



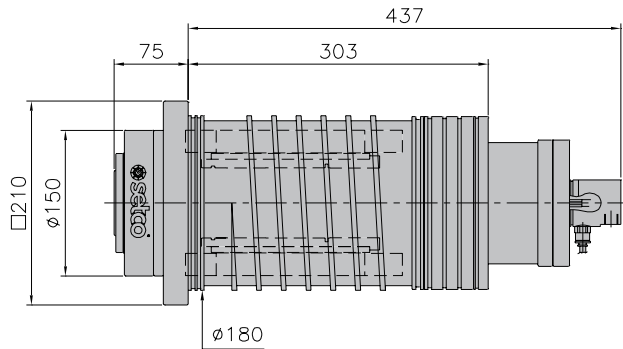
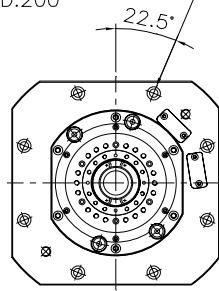
206A ///



ITEM/MODEL		220A		206A		
Max Speed	(rpm)	8000 / 10000 / 12000 / 15000		6000 / 8000 / 10000 / 12000		
Tool System		ISO #40 / HSK A63		ISO #50 / HSK A100		
Bearing	(mm)	$\phi 70$		$\phi 100$		
Lubrication		Grease / Oil-Air		Grease / Oil-Air		
Housing Dia.	(mm)	$\phi 230$		$\phi 310$		
Spindle Nose	(mm)	295		400		
Total Length	(mm)	949.5		1072.5		
Motor Name		FANUC	ATE	FANUC	ATE	mitsubishi
Motor Type		Bil 112L / 15000	AC 170 / 200 / 4	Bil 160LL / 13000	AC 240 / 280 / 6	SJ-2B452TKH
Power	(kW)	15 / 18.5 / 22	25 / 29	25 / 30	25 / 33	25 / 30
Rate Torque	(Nm)	95 / 118 / 167	83.2 / 99.3	238 / 420	298.4 / 404	205 / 420
Option		CTS / Air Shield	CTS / Air Shield	CTS	CTS	CTS

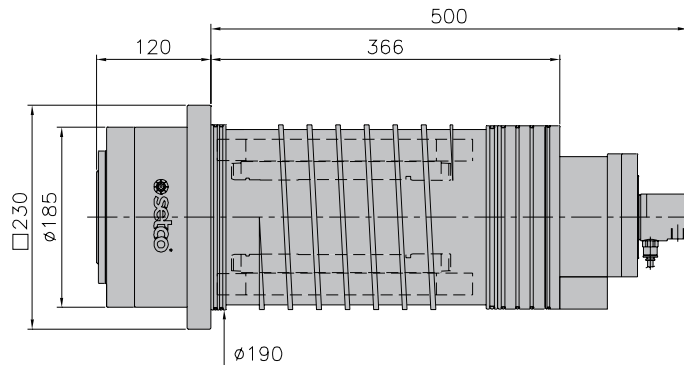
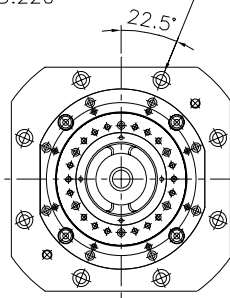
227A ///

8- ϕ 8.5 THRU
C/Bore ϕ 13.5X8.6 DP.
P.C.D.200



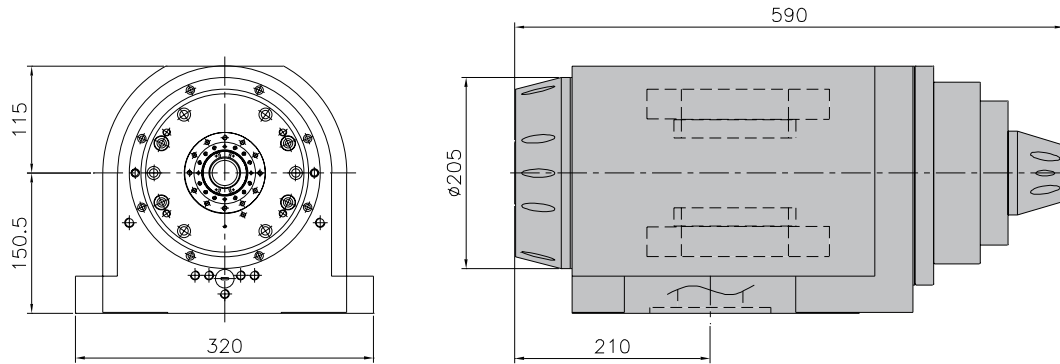
245A ///

8- ϕ 11 THRU
C/Bore ϕ 17.5X10.8 DP.
P.C.D.220

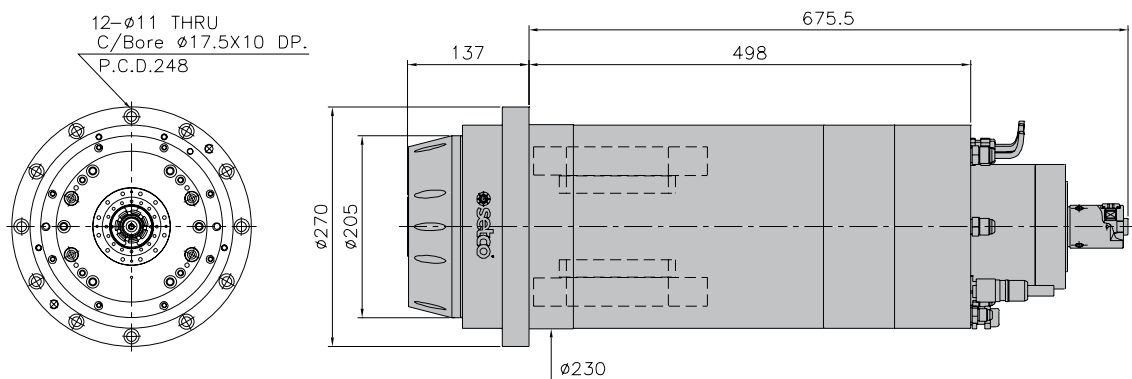


ITEM/MODEL		227A	245A
Max Speed	(rpm)	15000 / 18000	10000
Tool System		HSK A63	HSK A100
Bearing	(mm)	ϕ 70	ϕ 100
Lubrication		Grease / Oil-Air	Grease
Housing Dia.	(mm)	ϕ 180	ϕ 190
Spindle Nose	(mm)	75	120
Total Length	(mm)	512	620
Motor Name		ATE	ATE
Motor Type		DC 150 / 150 / 6	DC 160 / 200 / 8
Power	(kW)	29.5 / 37	26 / 34
Rate Torque	(Nm)	70.4 / 88.3	124 / 162
Option		CTS	CTS

251A ///

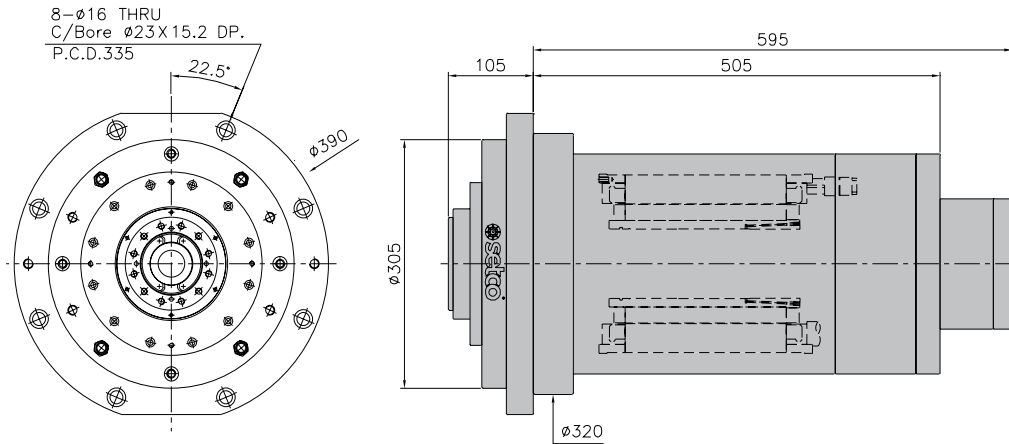


256A ///



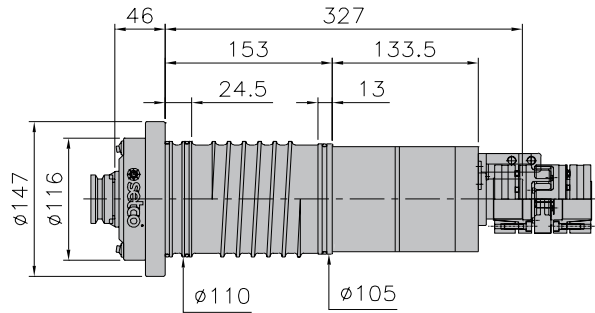
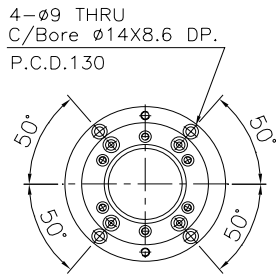
ITEM/MODEL		251A			256A
Max Speed	(rpm)	12000 / 15000			15000 / 18000
Tool System		HSK T63, Capto C6			HSK T63,
Bearing	(mm)	Ø70			Ø70
Lubrication		Grease / Oil-Air			Grease / /Oil-Air
Housing Dia.	(mm)	-			Ø230
Spindle Nose	(mm)	210			137
Total Length	(mm)	590			812.5
Motor Name		ATE	ATE	FANUC	ATE
Motor Type		AC 180 / 115 / 4	AC 180 / 150 / 8	Bl 112S / 15000	AC 180 / 115 / 4
Power	(kW)	11 / 22	19 / 23	11 / 15 / 22	11 / 22
Rate Torque	(Nm)	48.2 / 106.9	93 / 113	45.7 / 62.3 / 110	48.2 / 106.9
Option		CTS	CTS	CTS	CTS

236A ///

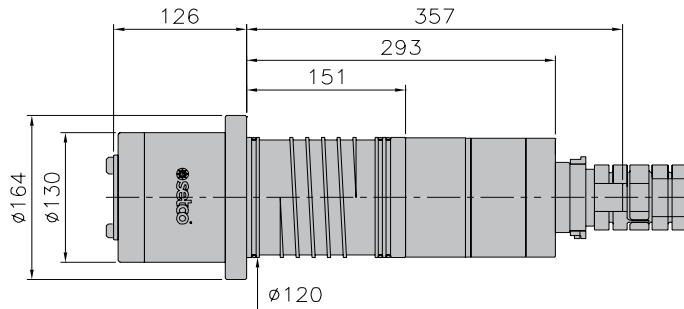
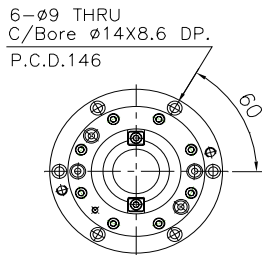


ITEM/MODEL	236A	
Max Speed	(rpm)	8000
Tool System		ISO #50 / HSK A100 / HSK T100
Bearing	(mm)	ϕ 100
Lubrication		Grease
Housing Dia.	(mm)	ϕ 320
Spindle Nose	(mm)	105
Total Length	(mm)	700
Motor Name		INDRAMAT
Motor Type		MSS202B-0210
Power	(kW)	29,6 / 54,2
Rate Torque	(Nm)	128 / 320
Option		CTS

105A ///



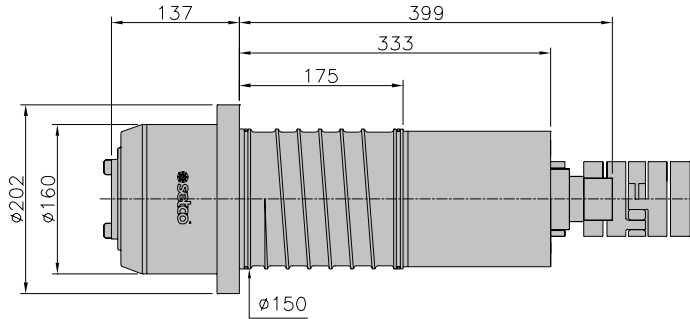
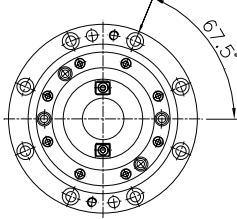
103A ///



ITEM/MODEL		105A	103A
Max Speed	(rpm)	10000 / 12000 / 15000 / 18000 / 20000 / 24000	8000 / 10000 / 12000 / 15000
Tool System		ISO #30	ISO #40
Bearing	(mm)	$\varnothing 45$	$\varnothing 60$
Lubrication		Grease	Grease
Housing Dia.	(mm)	$\varnothing 95$ / $\varnothing 110$	$\varnothing 120$
Spindle Nose	(mm)	42 / 46	126
Total Length	(mm)	373	483
Option		CTS / Bearing Temp. Sensor	CTS / Bearing Temp. Sensor

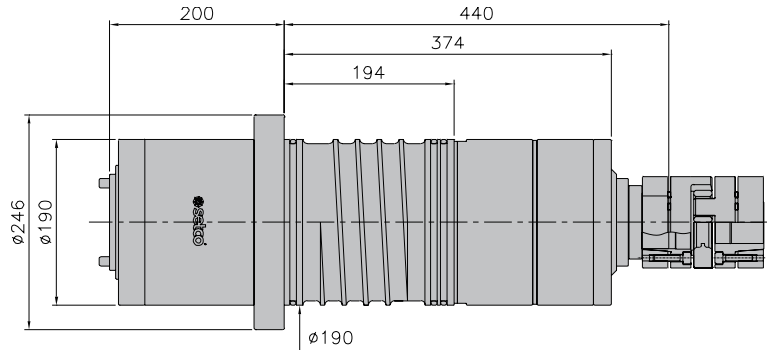
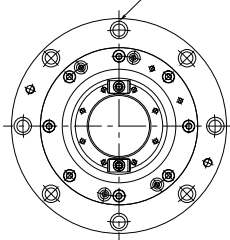
101A ///

8- ϕ 11 THRU
C/Bore ϕ 17.5X11 DP.
P.C.D.180



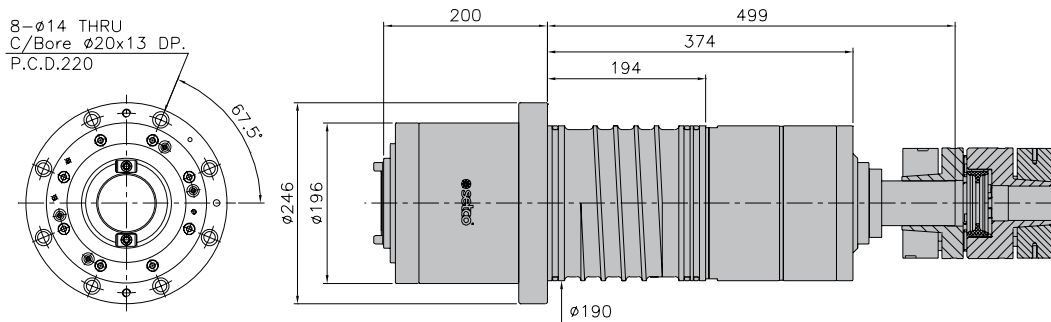
102A ///

8- ϕ 14 THRU
C/Bore ϕ 20X13 DP.
P.C.D.220



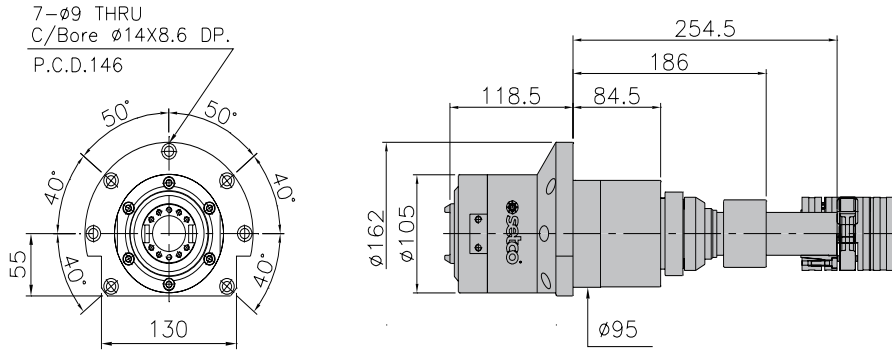
ITEM/MODEL		101A	102A
Max Speed	(rpm)	8000 / 10000 / 12000 / 15000 / 18000	6000 / 8000 / 10000 / 12000
Tool System		ISO #40 / HSK A63	ISO #50 / HSK A100
Bearing	(mm)	ϕ 70	ϕ 90
Lubrication		Grease / Oil-Air	Grease / Oil-Air
Housing Dia.	(mm)	ϕ 150	ϕ 190
Spindle Nose	(mm)	137	75 / 120 / 200
Total Length	(mm)	536	640
Option		CTS / Bearing Temp. Sensor	CTS / Bearing Temp. Sensor

108A ///

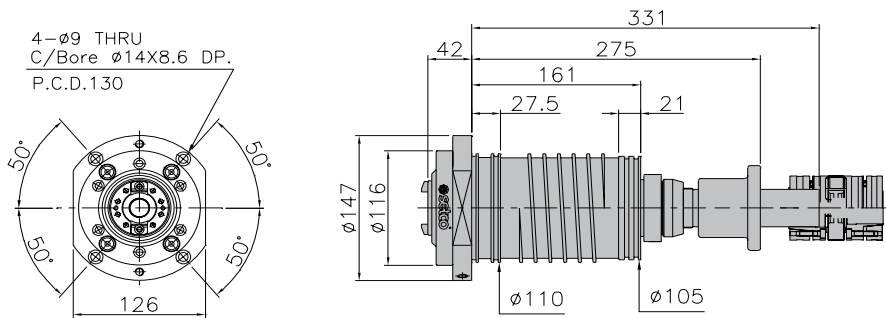


ITEM/MODEL		108A
Max Speed	(rpm)	6000 / 8000 / 10000 / 12000
Tool System		ISO #50 / HSK A100
Bearing	(mm)	ϕ 100
Lubrication		Grease / Oil-Air
Housing Dia.	(mm)	ϕ 190
Spindle Nose	(mm)	75 / 200
Total Length	(mm)	699
Option		CTS / Bearing Temp. Sensor

105A ///

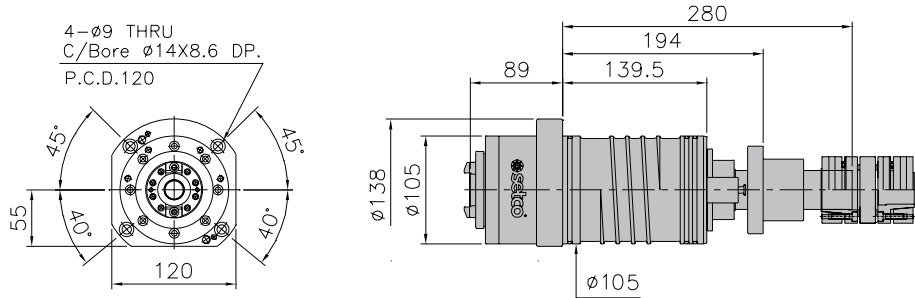


125A ///



ITEM/MODEL		105A	125A
Max Speed	(rpm)	10000 / 12000 / 15000 / 18000 / 20000 / 24000	24000
Tool System		ISO #30	ISO #30
Bearing	(mm)	$\varnothing 45$	$\varnothing 40$
Lubrication		Grease	Grease
Housing Dia.	(mm)	$\varnothing 95 / \varnothing 110$	$\varnothing 110$
Spindle Nose	(mm)	118.5	42
Total Length	(mm)	373	373
Option		CTS / Bearing Temp. Sensor	CTS / Bearing Temp. Sensor

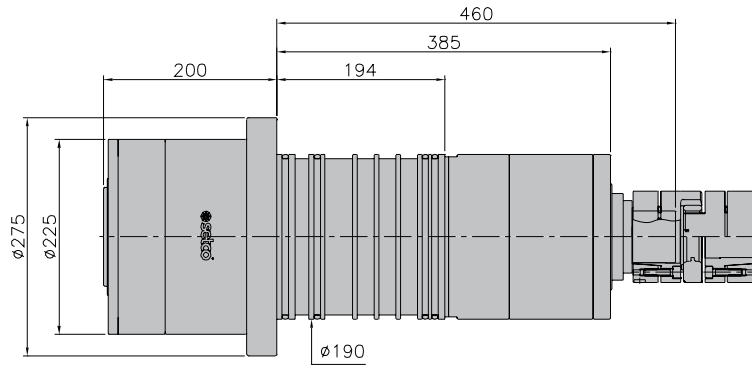
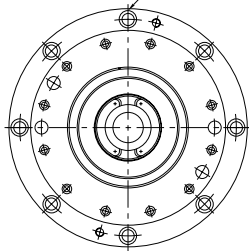
156A ///



ITEM/MODEL	156A	
Max Speed	(rpm)	12000 / 15000 / 20000 / 24000
Tool System		ISO #30
Bearing	(mm)	Ø40
Lubrication		Grease
Housing Dia.	(mm)	Ø105
Spindle Nose	(mm)	89
Total Length	(mm)	369
Option		CTS / Bearing Temp. Sensor

108A ///

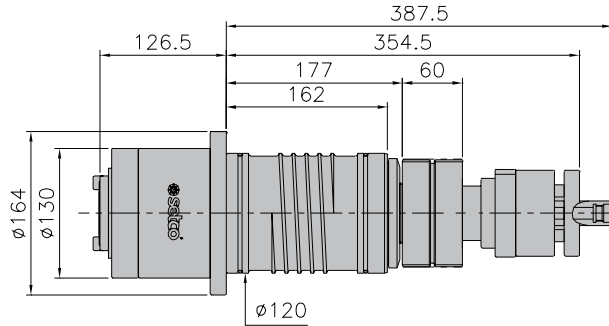
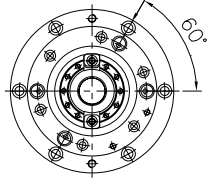
8- ϕ 14 THRU
C/Bore ϕ 20x13 DP.
P.C.D.250



ITEM/MODEL	108A	
Max Speed	(rpm)	6000 / 8000 / 10000 / 12000
Tool System		HSKT100
Bearing	(mm)	ϕ 100
Lubrication		Grease / Oil-Air
Housing Dia.	(mm)	ϕ 190
Spindle Nose	(mm)	200
Total Length	(mm)	660
Option		CTS / Bearing Temp. Sensor

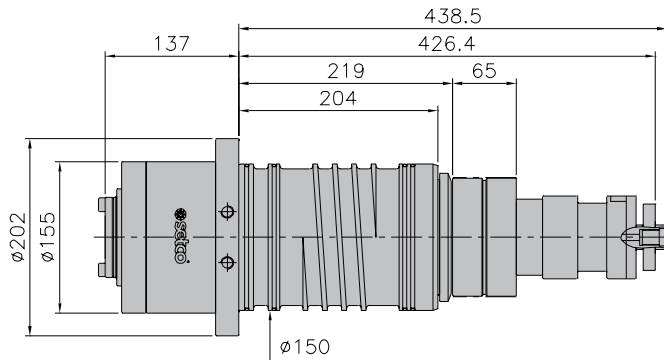
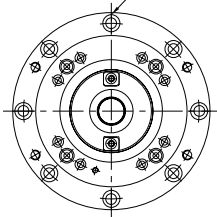
551A ///

6- $\varnothing 9$ THRU
C/Bore $\varnothing 14 \times 8.6$ DP.
P.C.D. 146



537A ///

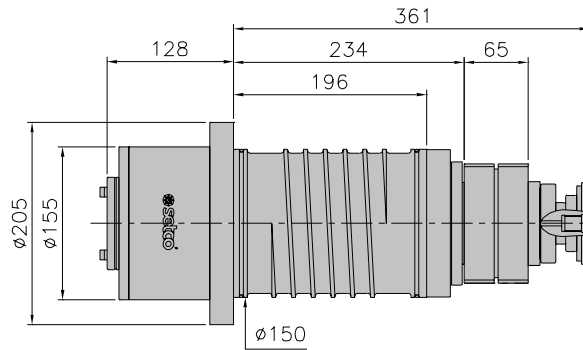
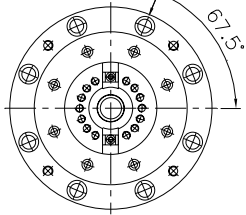
8- $\varnothing 11$ THRU
C/Bore $\varnothing 17.5 \times 10.8$ DP.
P.C.D.180



ITEM/MODEL	551A	537A
Max Speed (rpm)	8000 / 10000 / 12000	8000 / 10000 / 12000
Tool System	ISO #40	ISO #40
Bearing (mm)	$\varnothing 60$	$\varnothing 70$
Lubrication	Grease	Grease
Housing Dia. (mm)	$\varnothing 120$	$\varnothing 150$
Spindle Nose (mm)	126.5	137
Total Length (mm)	514	575.5
Option	CTS	CTS

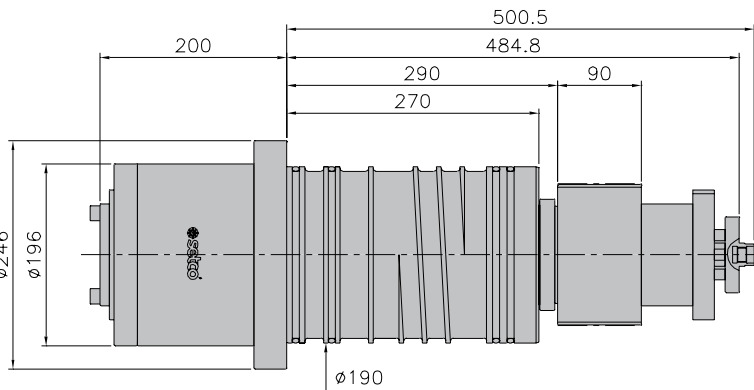
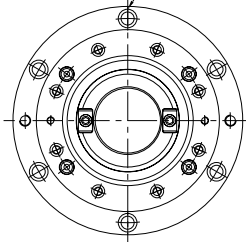
538A ///

8- $\phi 14$ THRU
C/Bore $\phi 20 \times 13$ DP,
P.C.D.180



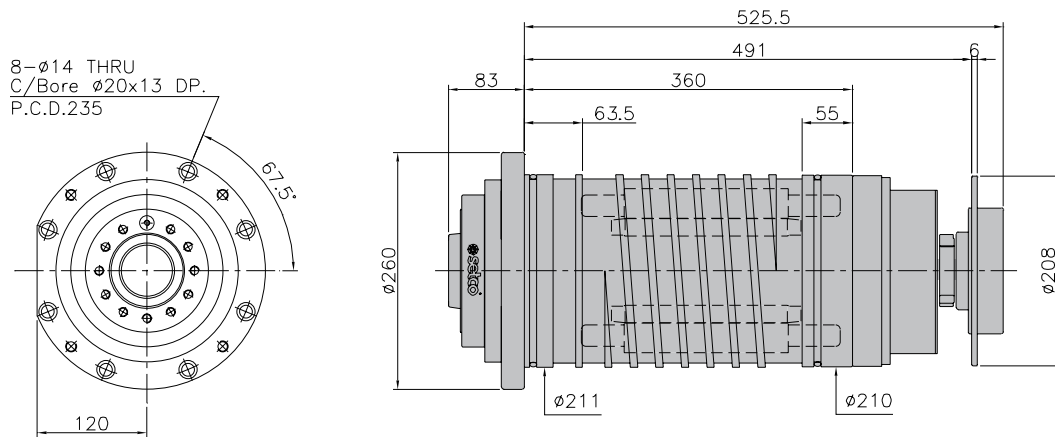
536A ///

6- $\phi 14$ THRU
C/Bore $\phi 20 \times 13$ DP,
P.C.D. 220

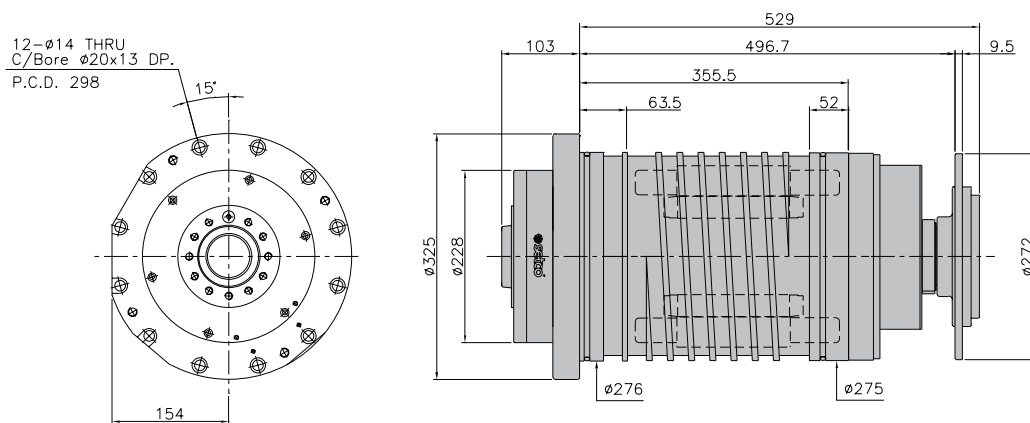


ITEM/MODEL		538A	536A
Max Speed	(rpm)	8000 / 10000 / 12000	6000 / 8000
Tool System		ISO #40	ISO #50
Bearing	(mm)	$\phi 70$	$\phi 100$
Lubrication		Grease	Grease
Housing Dia.	(mm)	$\phi 150$	$\phi 190$
Spindle Nose	(mm)	128	200
Total Length	(mm)	489	700.5
Option		CTS / Air-Shield	CTS

310A ///



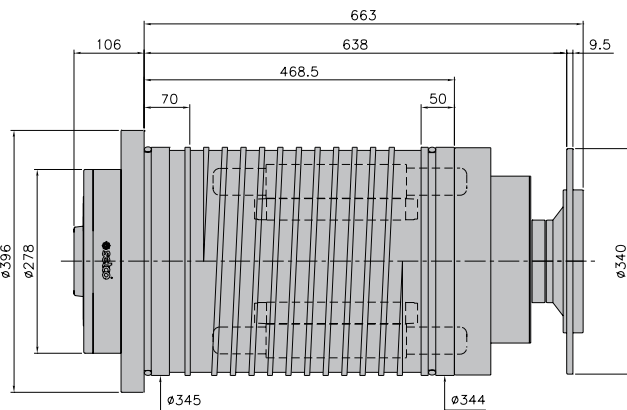
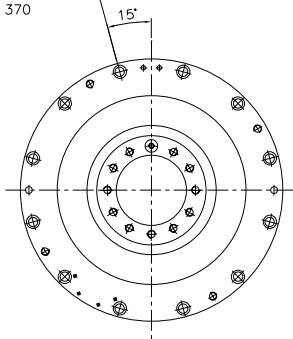
308A ///



ITEM/MODEL		310A		308A	
Shaft End		A2-5		A2-5	
Max Speed	(rpm)	6000		6000	
Bearing	(mm)	$\phi 80$		$\phi 90$	
Lubrication		Grease		Grease	
Spindle Through Hole	(mm)	$\phi 43$		$\phi 56$	
Taper		1/20 / MT5 / MT6		1/20	
Housing Dia.	(mm)	$\phi 211 / \phi 205 / \phi 185$		$\phi 276$	
Spindle Nose	(mm)	70		103	
Total Length	(mm)	609		632	
Motor Name		FANUC		FANUC	
Motor Type		β il 112M / 15000	ATE	β il 160S / 13000	ATE
Power	(kW)	5.5 / 7.5		11 / 15	
Torque	(Nm)	35 / 48		140 / 208	
		69.6		119.4 / 167.8	

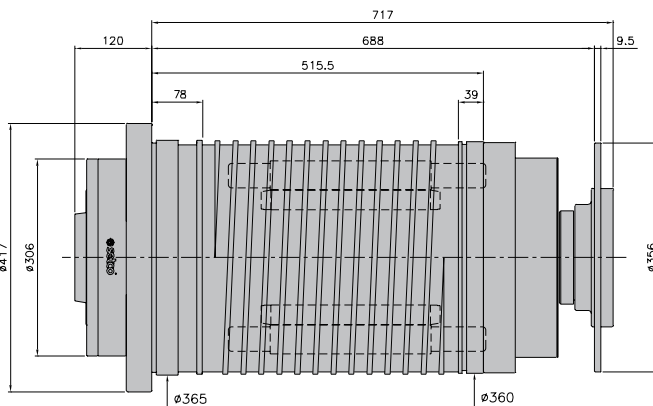
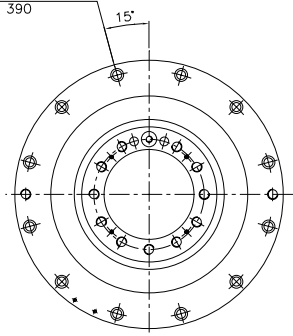
307A ///

12- ϕ 14 THRU
C/Bore ϕ 20x13 DP.
P.C.D. 370



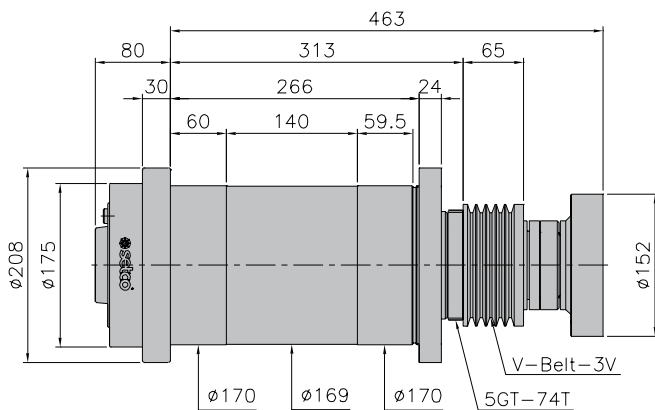
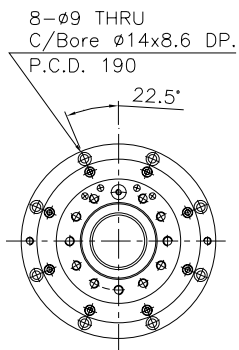
309A ///

12- ϕ 14 THRU
C/Bore ϕ 20x13 DP.
P.C.D. 390

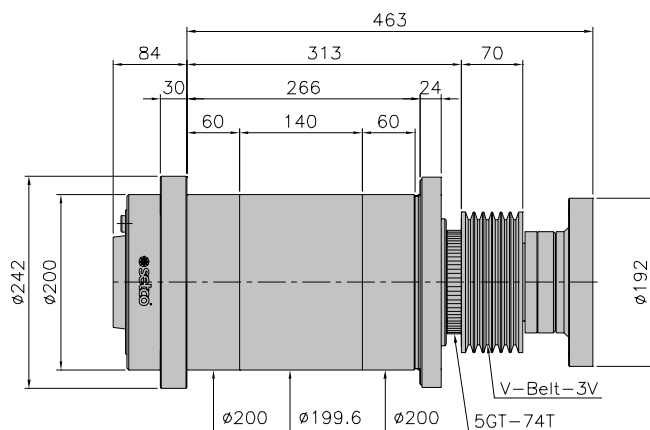
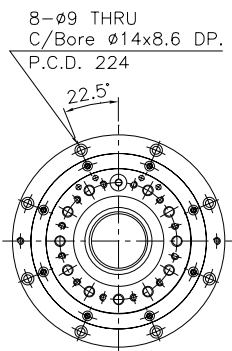


ITEM/MODEL	307A		309A
Shaft End	A2-6		A2-8
Max Speed	(rpm)	4500 / 5000	3500
Bearing	(mm)	ϕ 120	ϕ 130
Lubrication		Grease	Grease
Spindle Through Hole	(mm)	ϕ 61 / ϕ 75	ϕ 88
Taper		1/20	1/20
Housing Dia.	(mm)	ϕ 345	ϕ 365
Spindle Nose	(mm)	106	120
Total Length	(mm)	769	837
Motor Name	FANUC	ATE	FANUC
Motor Type	β il 180M/6000i	AC 300 / 240 / 8	β il 200L / 6000
Power	(kW)	11 / 15	15 / 22
Torque	(Nm)	233 / 477	376.9 / 583.6

315A ///

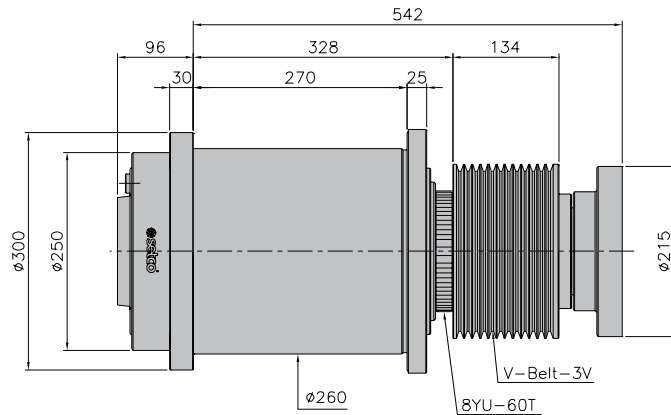
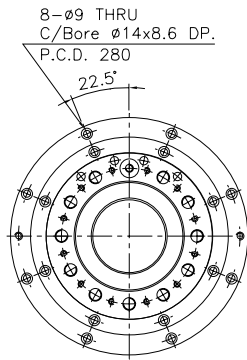


317A ///

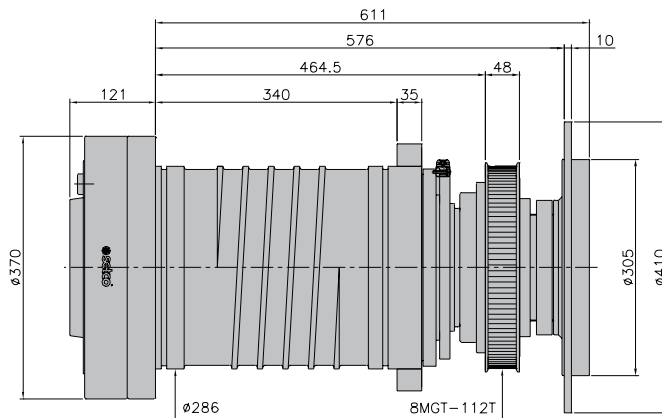
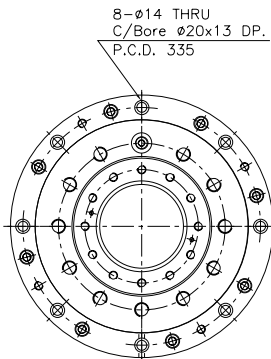


ITEM/MODEL		315A	317A
Shaft End		A2-5	A2-6
Max Speed	(rpm)	6000	4000
Bearing	(mm)	$\varnothing 80$	$\varnothing 100$
Lubrication		Grease	Grease
Spindle Through Hole	(mm)	$\varnothing 56$	$\varnothing 62$
Taper		MT6	MT6
Housing Dia.	(mm)	$\varnothing 170$	$\varnothing 200$
Spindle Nose	(mm)	80	84
Total Length	(mm)	543	547

318A ///

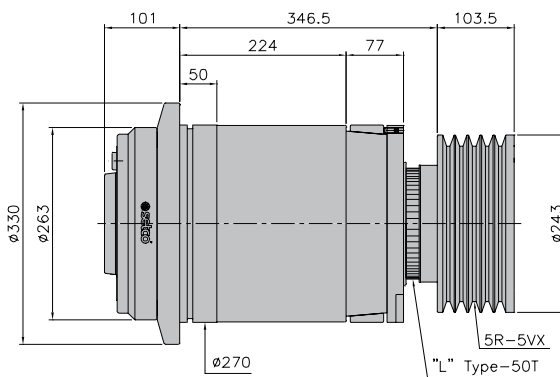
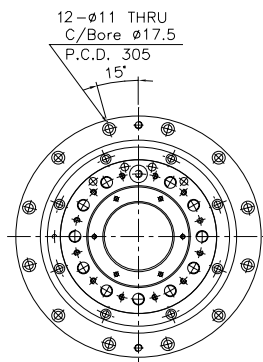


330A ///

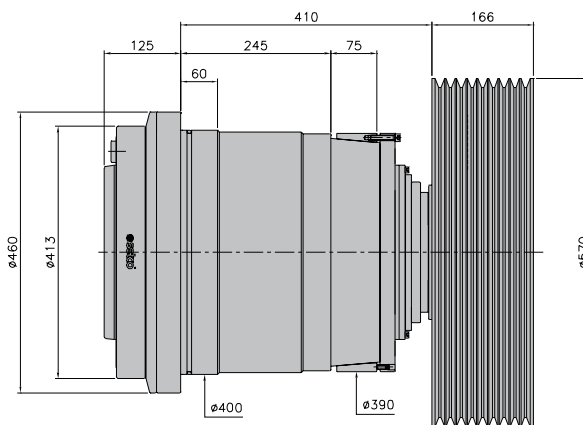
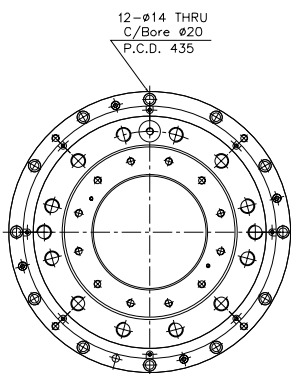


ITEM/MODEL		318A	330A
Shaft End		A2-8	A2-11
Max Speed	(rpm)	3500	2800
Bearing	(mm)	$\varnothing 130$	$\varnothing 160$
Lubrication		Grease	Grease
Spindle Through Hole	(mm)	$\varnothing 92$	$\varnothing 117.5$
Taper		1/20	1/20
Housing Dia.	(mm)	$\varnothing 260$	$\varnothing 286$
Spindle Nose	(mm)	96	121
Total Length	(mm)	638	732

337A ///



341A ///



ITEM/MODEL		337A	341A
Shaft End		A2-8	A2-15
Max Speed	(rpm)	3000	1500
Bearing	(mm)	Ø130	Ø200
Lubrication		Grease	Grease
Spindle Through Hole	(mm)	Ø58	Ø90
Taper		-	1/20
Housing Dia.	(mm)	Ø270	Ø400
Spindle Nose	(mm)	101	125
Total Length	(mm)	551	701