

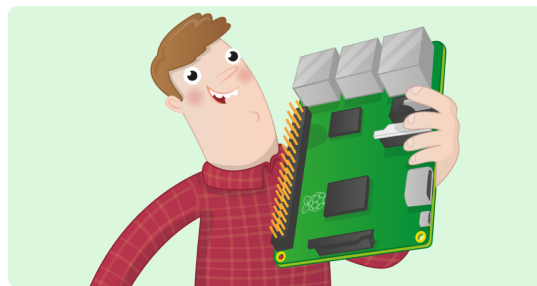


Projects

Setting up your Raspberry Pi

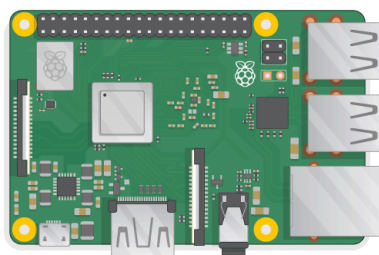
How to set up and start your Pi for the first time

Raspberry Pi



Step 1 Introduction

Here you'll learn about your Raspberry Pi, what things you need to use it, and how to set it up.

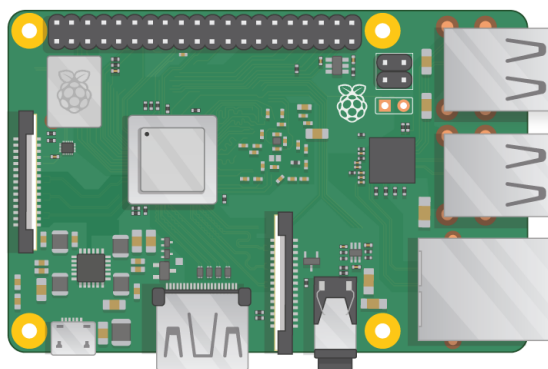


If you need to print this project, please use the **printer-friendly version** (<https://projects.raspberrypi.org/en/projects/raspberry-pi-setting-up/print>).

Step 2 What you will need

Which Raspberry Pi?

There are several **models of Raspberry Pi** (<https://www.raspberrypi.org/products/>), and for most people the Raspberry Pi 3 Model B+ is the one to choose.



The Raspberry Pi 3 Model B+ is the newest, fastest, and easiest to use.

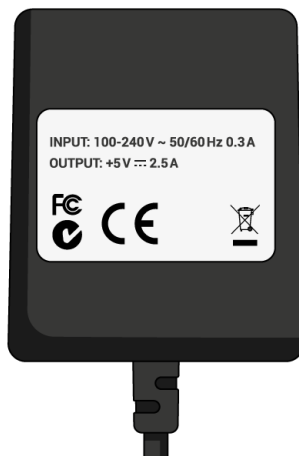
The Raspberry Pi Zero and Zero W are smaller and require less power, so they're useful for portable projects such as robots. It's generally easier to start a project with the Raspberry Pi 3, and to move to the Pi Zero when you have a working prototype that the smaller Pi would be useful for.

If you want to buy a Raspberry Pi, head to **rpf.io/products** (<https://rpf.io/products>).

A power supply

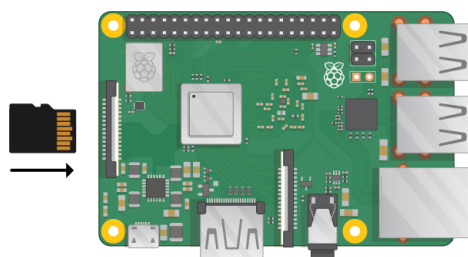
To connect to a power socket, the Raspberry Pi has a micro USB port (the same found on many mobile phones).

You will need a power supply which provides at least 2.5 amps. We recommend using the **official Raspberry Pi power supply** (<https://www.raspberrypi.org/products/raspberry-pi-universal-power-supply/>).



A micro SD card

Your Raspberry Pi needs an SD card to store all its files and the Raspbian operating system.



You will need a micro SD card with a capacity of at least 8 GB.

Many sellers supply SD cards for Raspberry Pi that are already set up with Raspbian and ready to go.

A keyboard and a mouse

To start using your Raspberry, you will need a USB keyboard and a USB mouse.

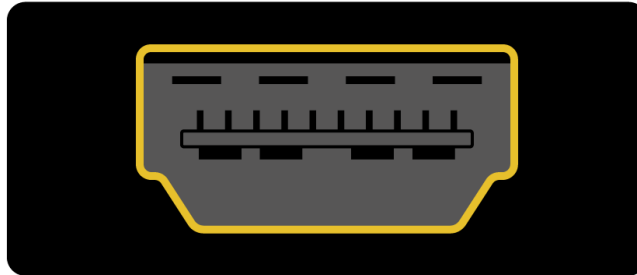
Once you've set your Pi up, you can use a Bluetooth keyboard and mouse, but you'll need a USB keyboard and mouse for setting up.

A TV or computer screen

To view the Raspbian desktop environment, you will need a screen and a cable to link the screen and the Pi. The screen can be a TV or a computer monitor. If the screen has built-in speakers, the Pi will be able to use these to play sound.

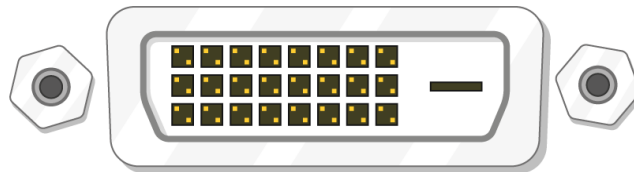
HDMI

The Raspberry Pi has a HDMI output port that is compatible with the HDMI port of most modern TVs and computer monitors. Many computer monitors may also have DVI or VGA ports.



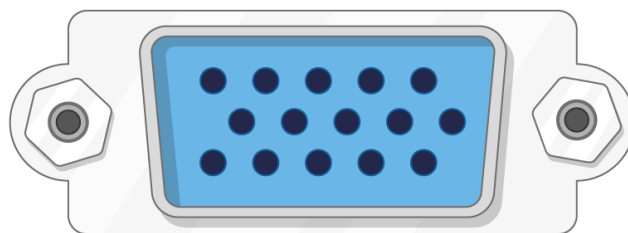
DVI

If your screen has a DVI port, you can connect the Pi to it using a HDMI-to-DVI cable.

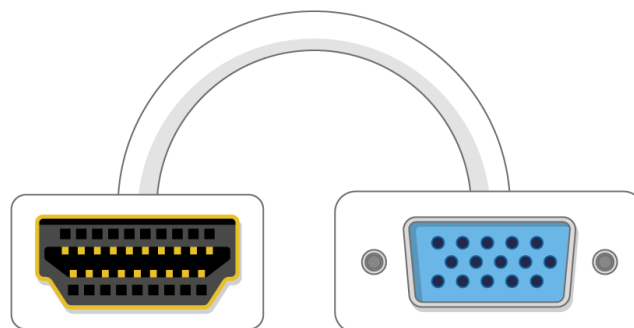


VGA

Some screens only have a VGA port.



To connect your Pi to such a screen, you can use a HDMI-to-VGA adapter.



Optional extras

A case

You may want to put your Raspberry Pi in a case. This is not essential, but it will provide protection for your Pi. If you'd like, you can use the official case for the **Raspberry Pi 3** (<https://www.raspberrypi.org/products/raspberry-pi-3-case/>) or **Pi Zero or Zero W** (<https://www.raspberrypi.org/products/raspberry-pi-zero-case/>).

Headphones or speakers

The large Raspberry Pi models (not the Pi Zero/Zero W) have a standard audio port like the one on your smart phone or MP3 player. If you want to, you can connect your headphones or speakers so that the Pi can play sound. If the screen you're connecting your Pi to has built-in speakers, the Pi can play sound through these.

An Ethernet cable

The large Raspberry Pi models (not the Pi Zero/Zero W) have a standard Ethernet port to connect them to the internet. To connect a Pi Zero to the internet, you need a USB-to-Ethernet adaptor. The Raspberry Pi 3 and Pi Zero W can also be wirelessly connected to the web.

Step 3 Set up your SD card

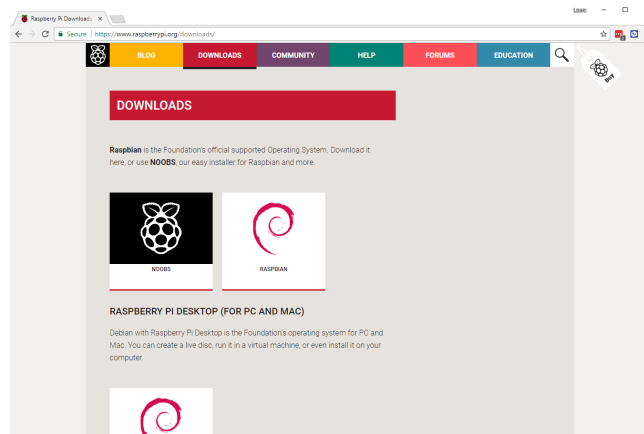
If you have an SD card that doesn't have the Raspbian operating system on it yet, or if you want to reset your Raspberry Pi, you can easily install Raspbian yourself. To do so, you need a computer that has an SD card port – most laptop and desktop computers have one.

The Raspbian operating system via NOOBS

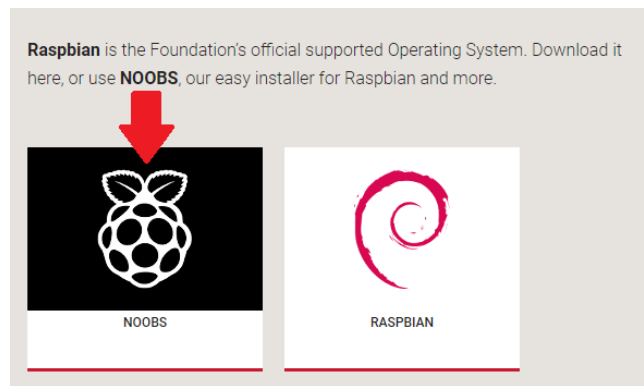
Using the NOOBS software is the easiest way to install Raspbian on your SD card.

Download NOOBS

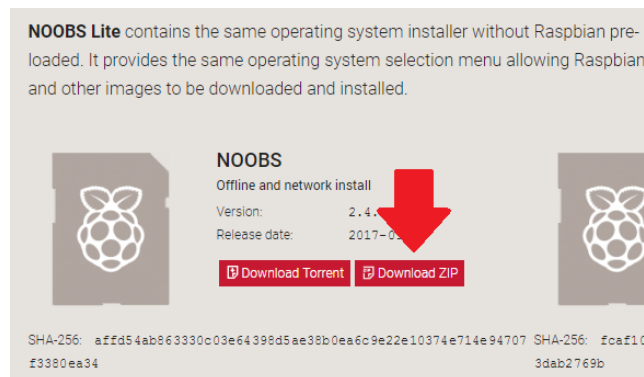
- Visit the **Raspberry Pi downloads page** (<https://www.raspberrypi.org/downloads>).



- You should see a box linking to the NOOBS files. Click on the box.



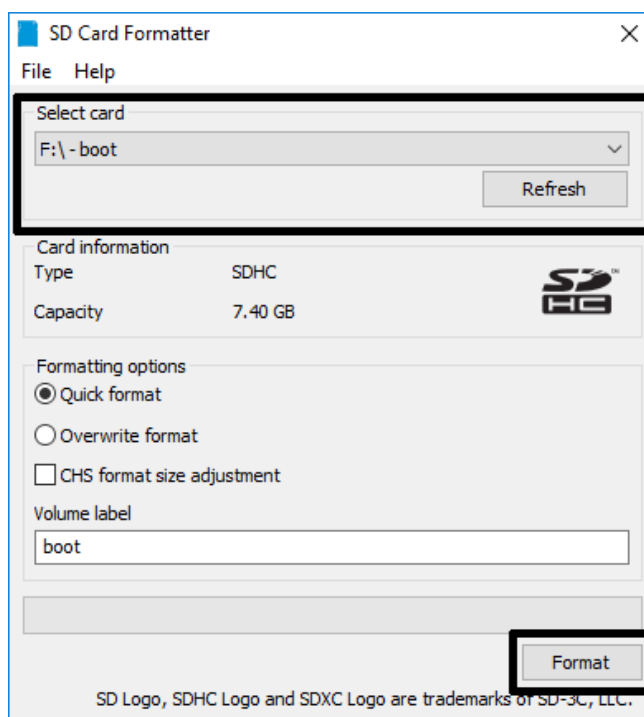
- The simplest option is to download the zip archive of the files. Make sure to pay attention to where you save the archive, so that you can find it again quickly.

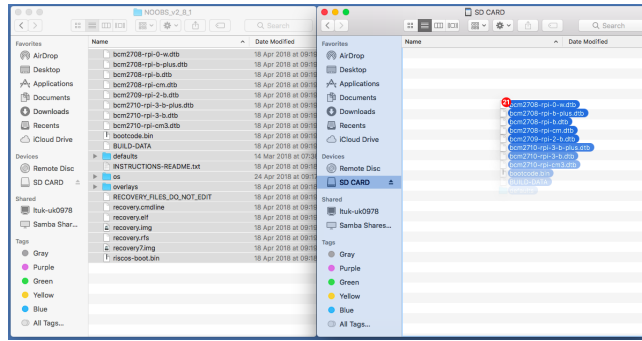


Format the SD card

Anything that's stored on the SD card will be overwritten during formatting. So if the SD card on which you want to install Raspbian currently has any files on it, e.g. from an older version of Raspbian, you may wish to back these files up first to not lose them permanently.

- Visit the SD Association's website and download **SD Formatter** (https://www.sdcard.org/downloads/formatter_4/index.html) for Windows or Mac.
- Follow the instructions to install the software.
- Insert your SD card into the computer or laptop's SD card slot.
- In SD Formatter, select your SD card, and then format the card.

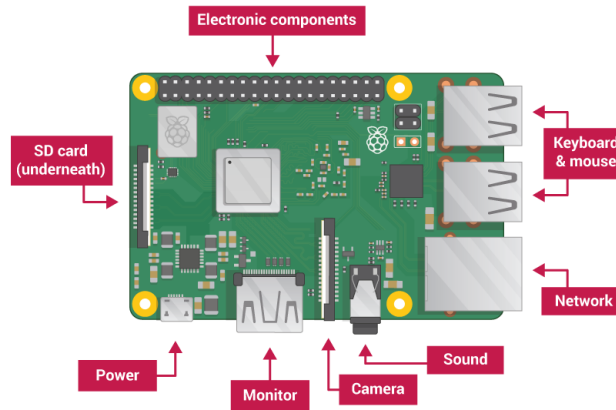




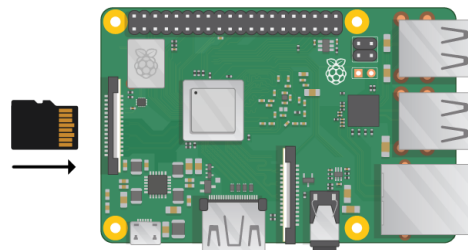
- Once the files have all been copied over, you can eject the SD card.

Step 4 Connect your Raspberry Pi

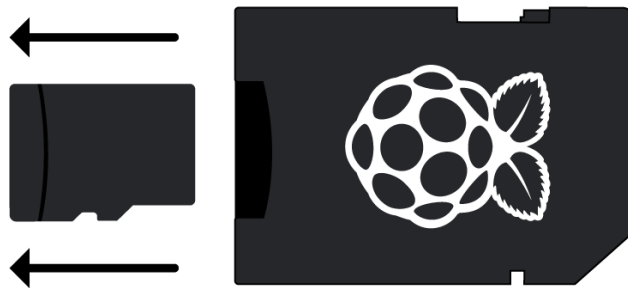
Let's get everything connected. It's important to do this in the right order, so that all your components are safe.



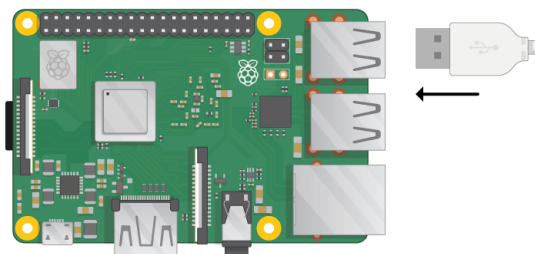
- Insert the SD card you've set up with Raspbian (via NOOBS) into the micro SD card slot at the underside of your Pi.



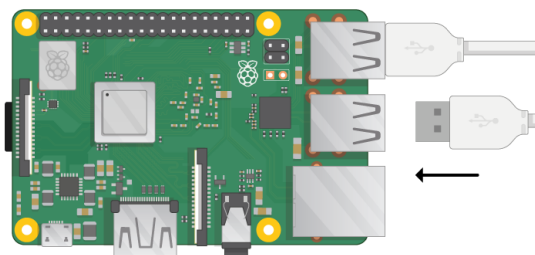
Note: Lots of micro SD cards will come inside a larger adapter – you can slide the card out using the lip at the bottom.



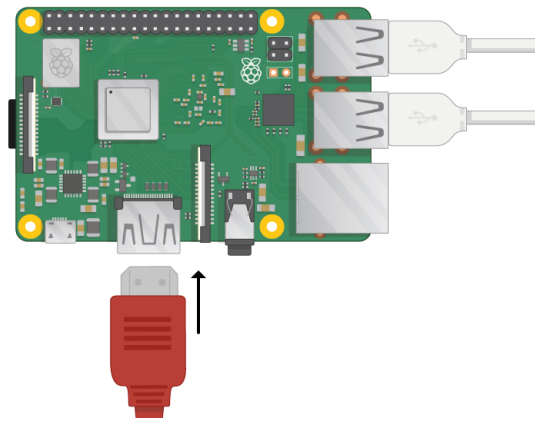
- Find the USB cable for your mouse, and connect the mouse to a USB port on the Raspberry Pi (it doesn't matter which one).



- Connect the keyboard in the same way.



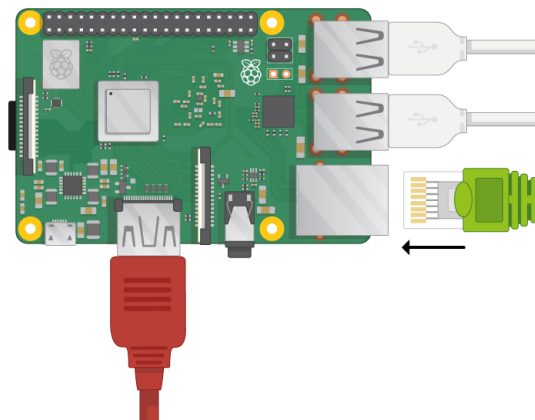
- Look at the HDMI port on the Raspberry Pi – notice that it has a large, flat side on top.



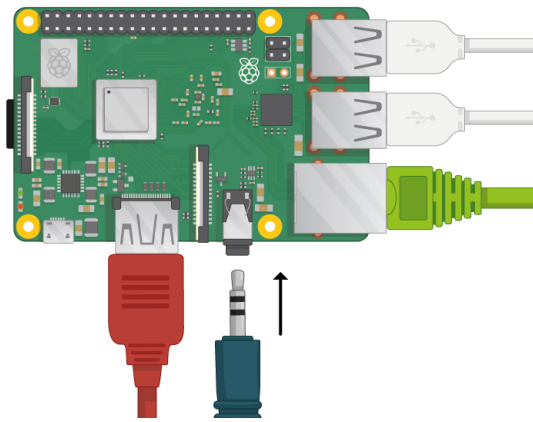
- Make sure your screen is plugged into a wall socket and turned on. Use a cable to connect the screen to the Pi's HDMI port – use an adapter if necessary.

Note: nothing will display on the screen, because the Pi is not running yet.

- If you want to connect the Pi to the internet via Ethernet, use an Ethernet cable to connect the Ethernet port on the Raspberry Pi to an Ethernet socket on the wall or on your internet router. You don't need to do this if you'll be using WiFi or if you don't want to connect to the internet.



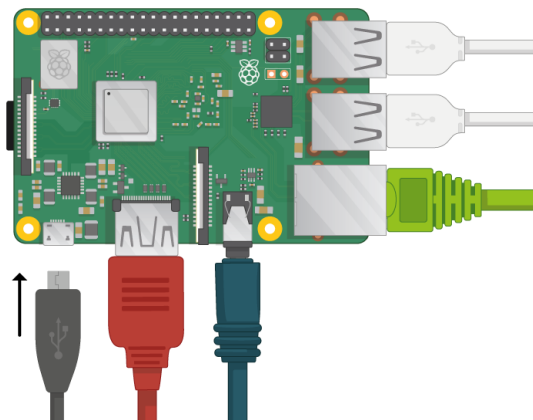
- Sound will come from your screen if it has speakers or you can connect headphones or speakers to the audio jack if you have them.



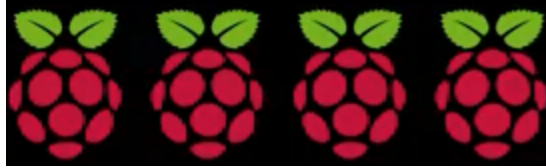
Step 5 Start up your Raspberry Pi

Your Raspberry Pi doesn't have a power switch: as soon as you connect it to a power outlet, it will turn on. Notice that the Pi's micro USB power port has a longer flat side on top.

- Plug a micro USB power supply into a socket and connect it to you Pi's power port.



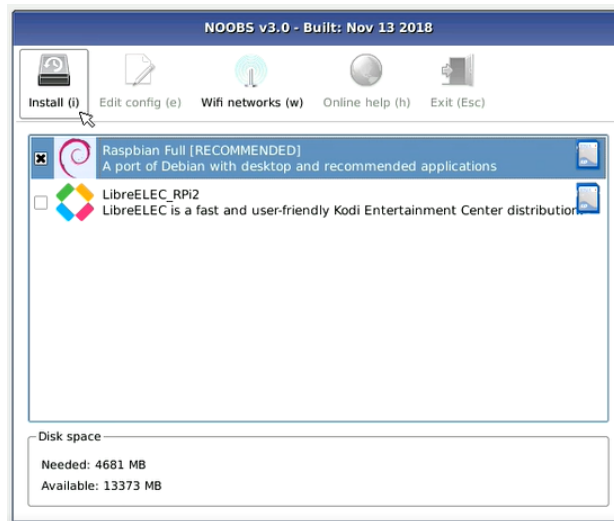
You should see a red LED light up on the Raspberry Pi, which indicates that the Pi is connected to power. As it starts up (this is also called **booting**), you will see raspberries appear in the top left-hand of your screen.



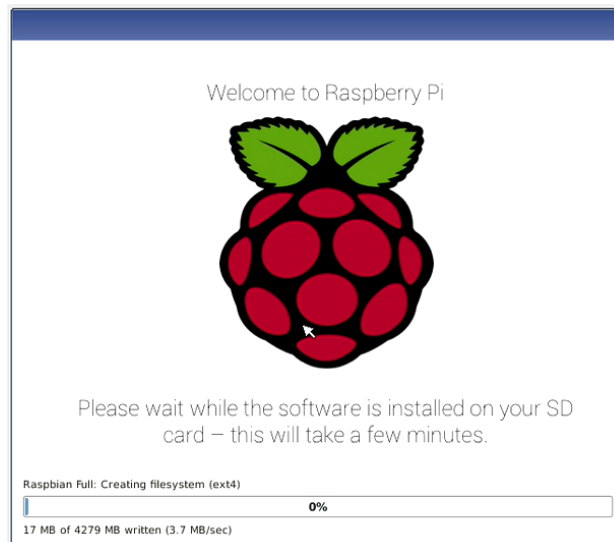
First-time startup with NOOBS

If this is the first time you're starting your Raspberry Pi with an SD card containing NOOBS, you will see the NOOBS installer. This software will walk you through installing the Raspbian operating system (OS).

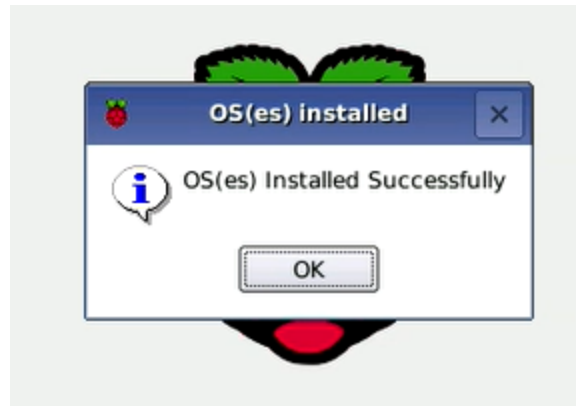
- When the installer has loaded, it will offer you a choice of which OS to install. Check the box for **Raspbian**, and then click **Install**.



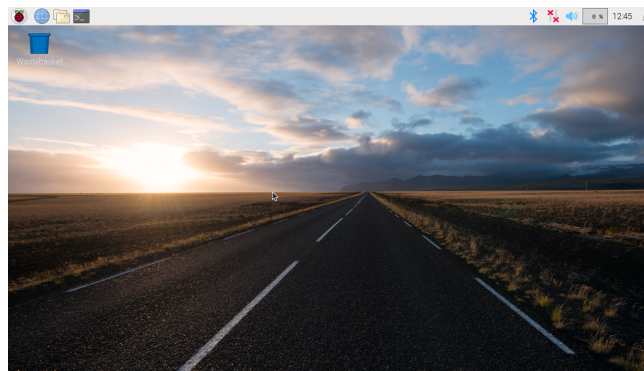
- Click **Yes** in the warning dialogue box, and then sit back and relax. The Raspbian installation process will take a bit of time.



- When Raspbian has been installed, click **OK**. Your Raspberry Pi will restart, and Raspbian will then boot up.



After a few seconds the Raspbian Desktop will appear.



Step 6 Finish the setup

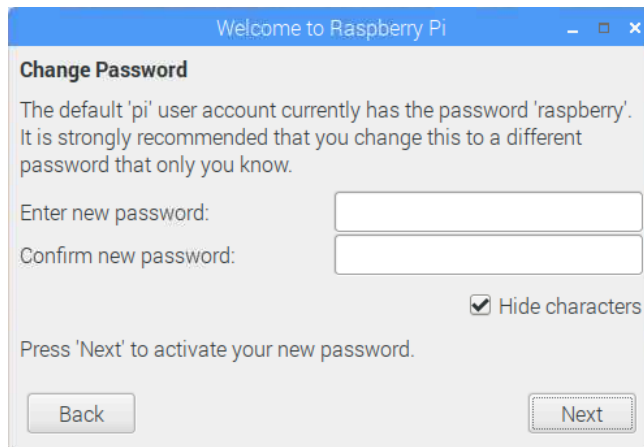
When you start your Raspberry Pi for the first time, the **Welcome to Raspberry Pi** application will pop up and guide you through the initial setup.



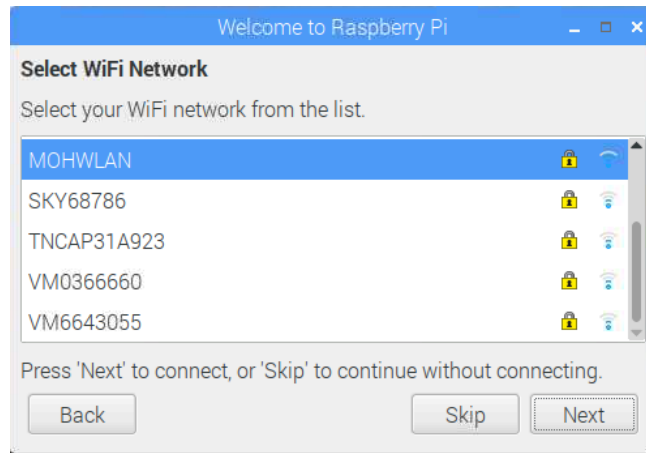
- Click **Next** to start the setup.
- Set your **Country**, **Language**, and **Timezone**, then click **Next** again.



- Enter a new password for your Raspberry Pi and click **Next**.

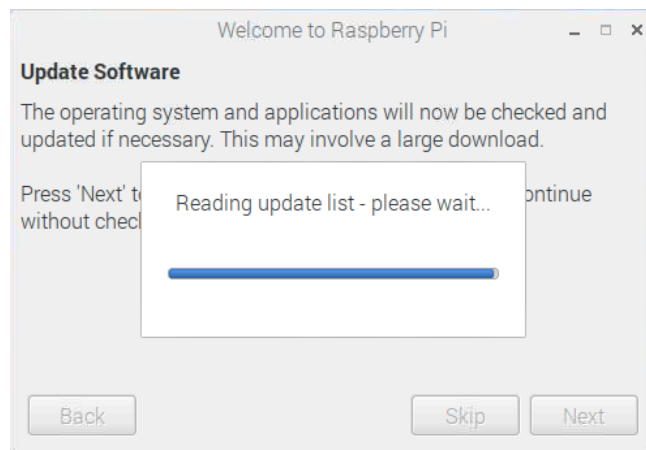


- Connect to your WiFi network by selecting its name, entering the password, and clicking **Next**.



Note: if your Raspberry Pi model doesn't have wireless connectivity, you won't see this screen.

- Click **Next** let the wizard check for updates to Raspbian and install them (this might take a little while).



- Click **Done** or **Reboot** to finish the setup.

Note: you will only need to reboot if that's necessary to complete an update.



Step 7 Where to find help

If you're having problems with your Pi, there are lots of ways you can get help and advice:

- Check out the **help section** (<https://www.raspberrypi.org/help/>) and the **troubleshooting guide** (<https://www.raspberrypi.org/learning/troubleshooting-guide/>) on the Raspberry Pi website
- The **Raspberry Pi forum** (<https://www.raspberrypi.org/forums>), including the **Beginners** (<https://www.raspberrypi.org/forums/viewforum.php?f=91>) section, is a great place to ask questions and get support from the Raspberry Pi community
- Call out on **Twitter** (<https://twitter.com>) using the hashtag #rpilearn, or submit a question on the **Raspberry Pi Stack Exchange** (<https://raspberrypi.stackexchange.com/>)
- You could also attend a free **Raspberry Jam** (<https://rpf.io/jam>) community event to talk to people about their experiences and get some first-hand help from fellow Raspberry Pi users

Step 8 What next?

- Take a look at our **Using your Raspberry Pi** (<https://projects.raspberrypi.org/en/projects/raspberry-pi-using>) guide.
- Explore what you can do with your Raspberry Pi by creating some of our **digital making projects** (<https://projects.raspberrypi.org>), for example:
 - **Robot antenna** (<https://projects.raspberrypi.org/en/projects/robot-antenna>) – control a robot's antenna light with a Raspberry Pi and code blocks

- **Rock band** (<https://projects.raspberrypi.org/en/projects/rock-band>) – learn how to code your own musical instruments
- **Turtle race** (<https://projects.raspberrypi.org/en/projects/turtle-race>) – race digital turtles against each other
- **Push button stop-motion** (<https://projects.raspberrypi.org/en/projects/push-button-stop-motion>) – make your own stop-motion animation rig with a button and a **Raspberry Pi Camera Module** (<https://www.raspberrypi.org/products/camera-module-v2/>).

Published by **Raspberry Pi Foundation** (<https://www.raspberrypi.org>) under a **Creative Commons license** (<https://creativecommons.org/licenses/by-sa/4.0/>).

View project & license on GitHub (<https://github.com/RaspberryPiLearning/raspberry-pi-setting-up>).