


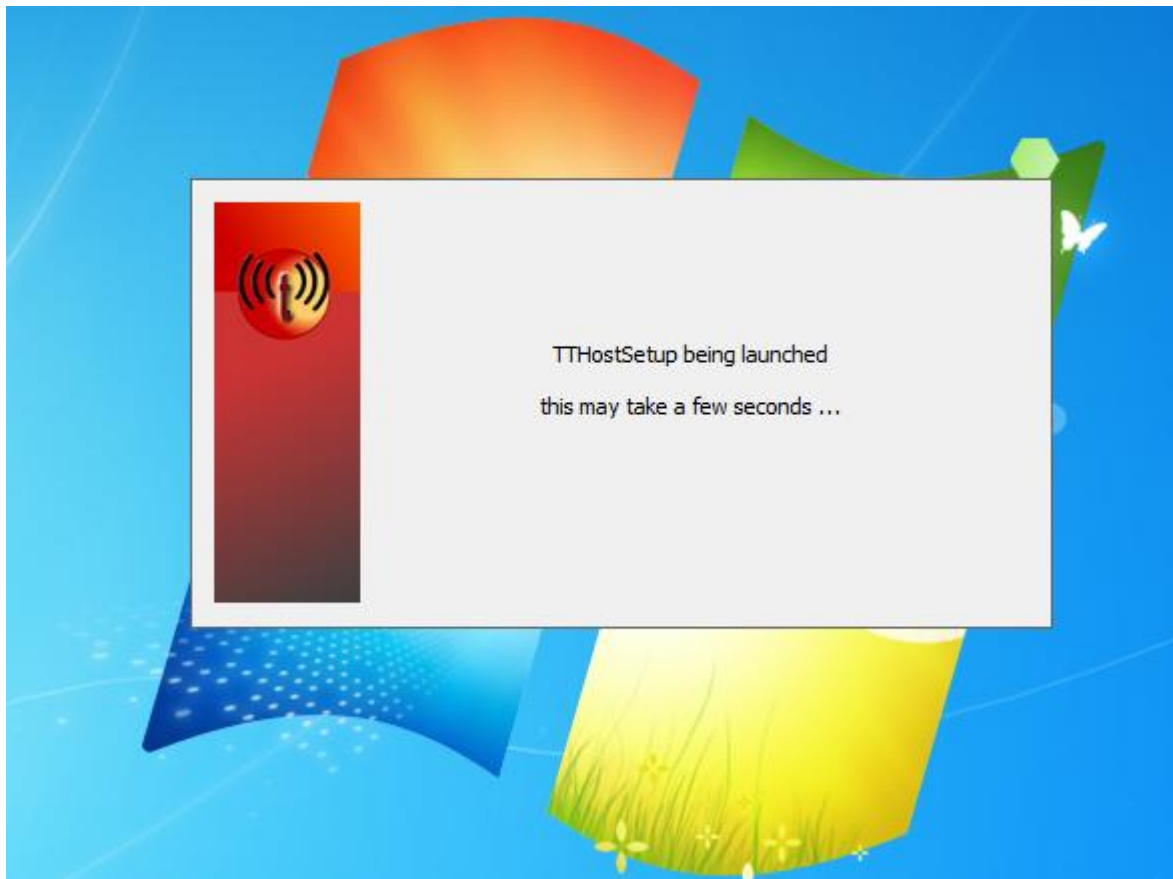
## Setup Notes for the TTService System

© William L. Beattie 2012-2015. All rights reserved.

 Ensure the PC is connected to the internet.

### Initial Registration Setup

To setup the TTService you will need to launch the *TTHostSetup.exe* application.



Once launched, this temporary popup dialog will be displayed while the application is checking the local Network connections.

When all the connected networks have been detected, the **TTHostSetup** application will attempt to ping the <http://www.trbohost.com> web server. During this time, the PC screen should look similar to the below image.:-



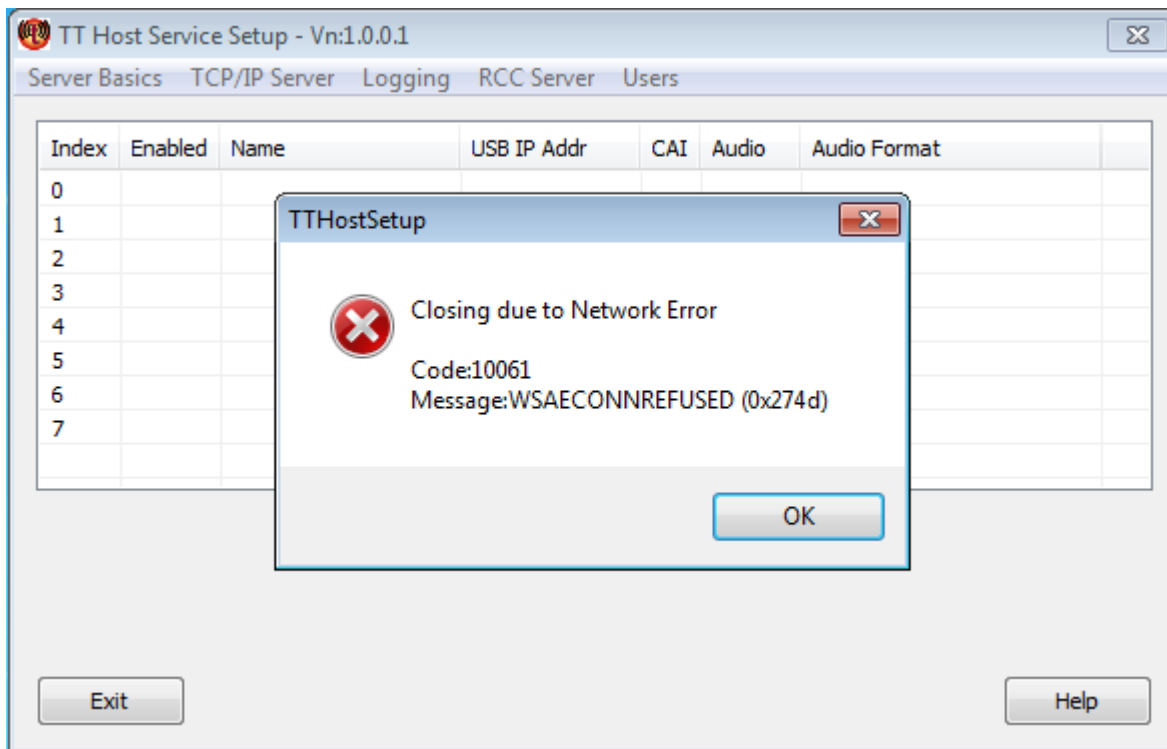
## Failure connecting to Web Server

If the application fails to connect to the web server, then this usually implies:-

- that the PC is not connected to the internet,
- the web server can't be found, or
- the web server is possibly not running.

Please check with your system administrator. If your end seems ok, then please post a screenie of the error message on the <http://www.transtrbo.com> forums.

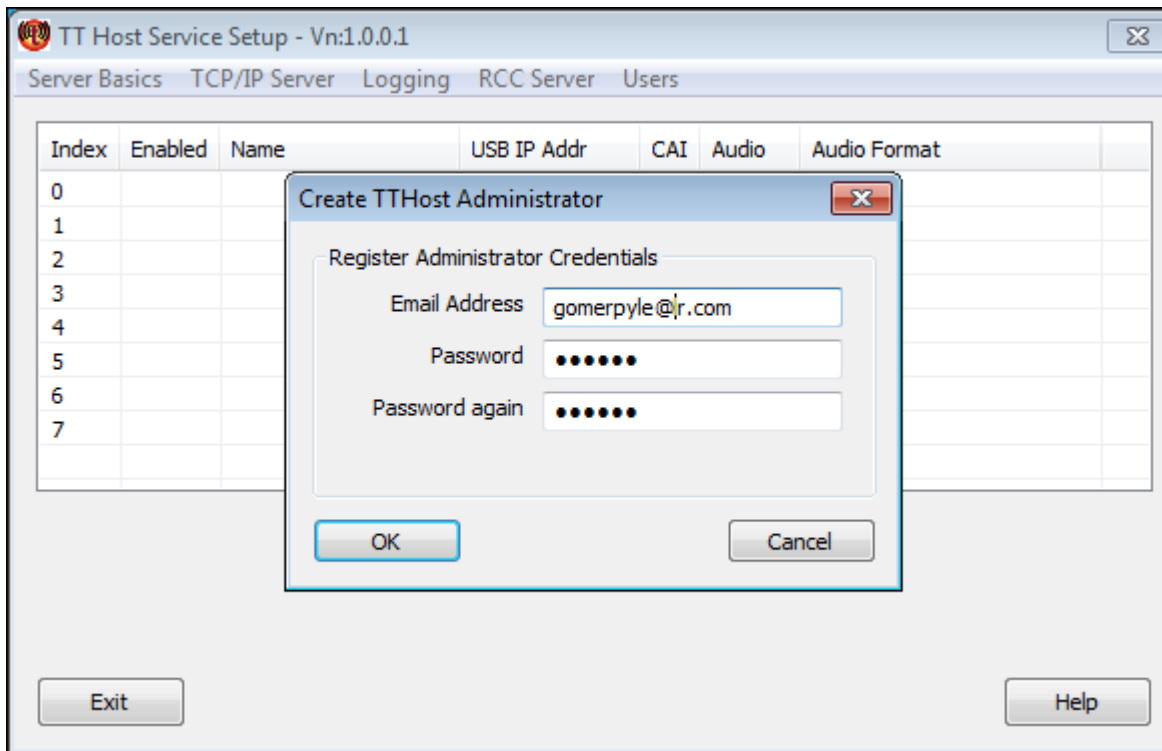
Seen below, is an example of a failed connection to the web server.



The application will terminate after the "OK" button has been pressed.

## Create Administrator Credentials

When the application connects to the web server, the **Create TTHost Administrator** dialog will be displayed:-

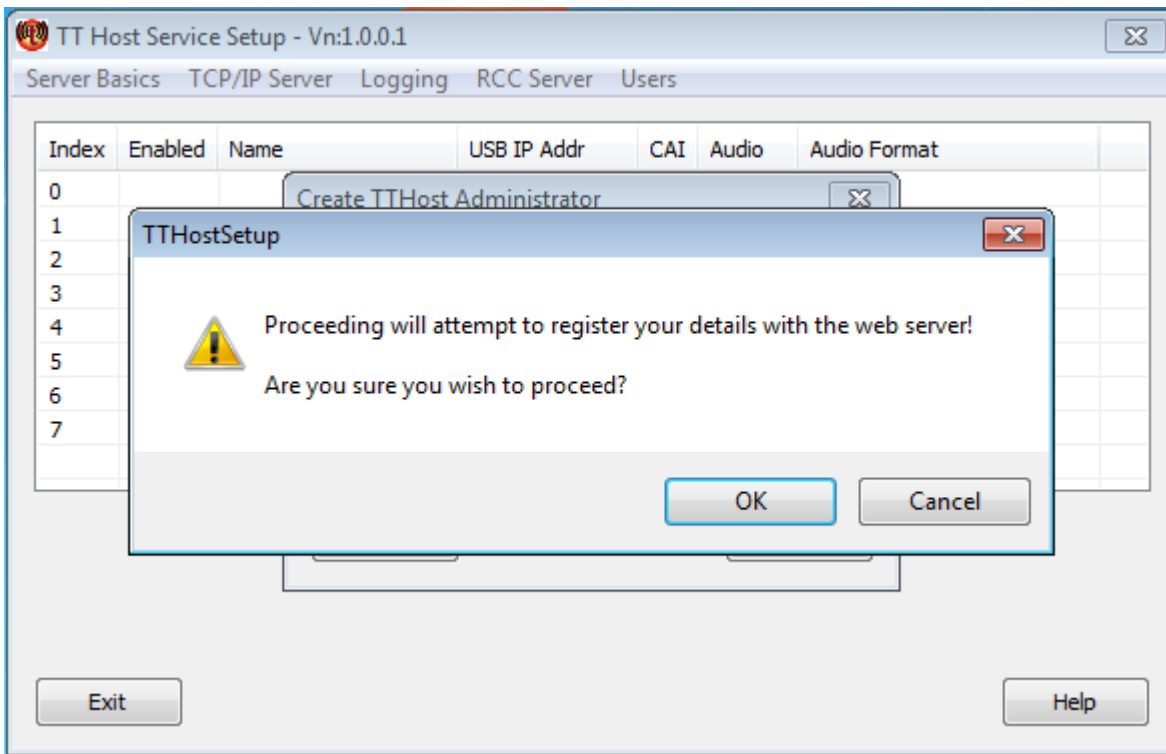


This is where you will be able to register your administrator credentials (a valid email address plus a password).

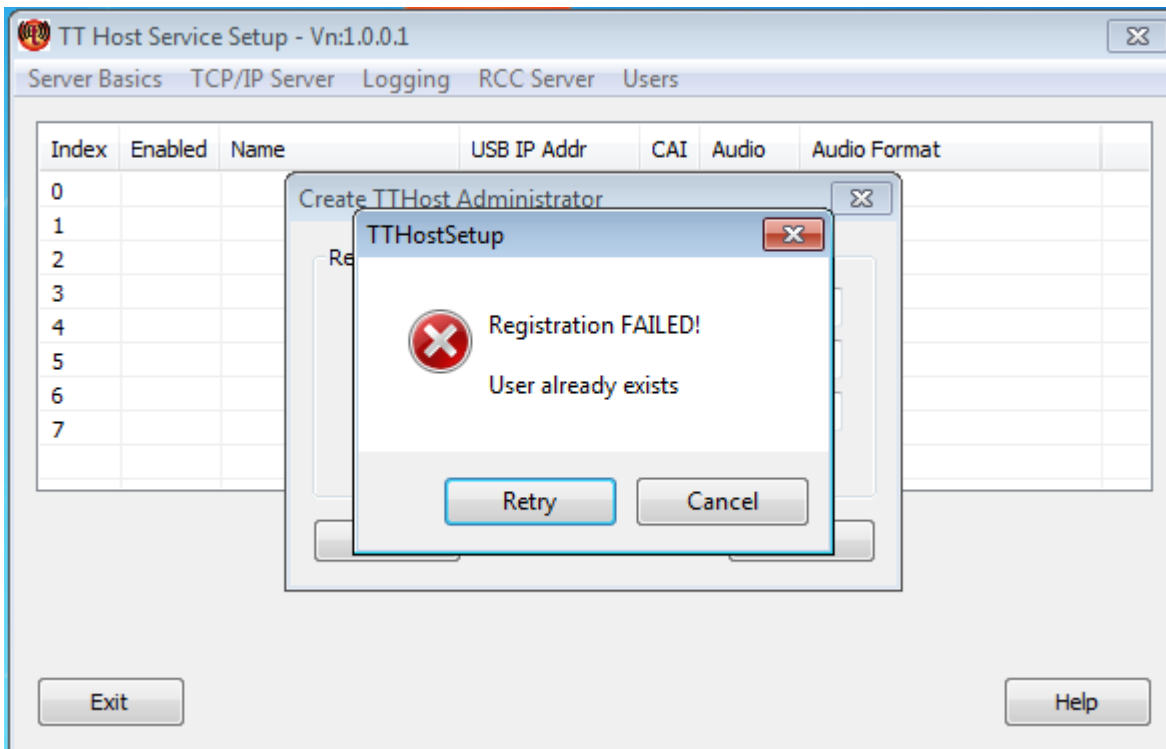
It is important to use a valid email if you expect to be advised of updates, password resets and support. (This will be mandatory in future releases).

Your email address and password will also be used to login to the **TransTRBO/TrboHost web server** as well as the **TTHostSetup.exe**, **TTHostServiceDlg.exe** and the **TTService**.

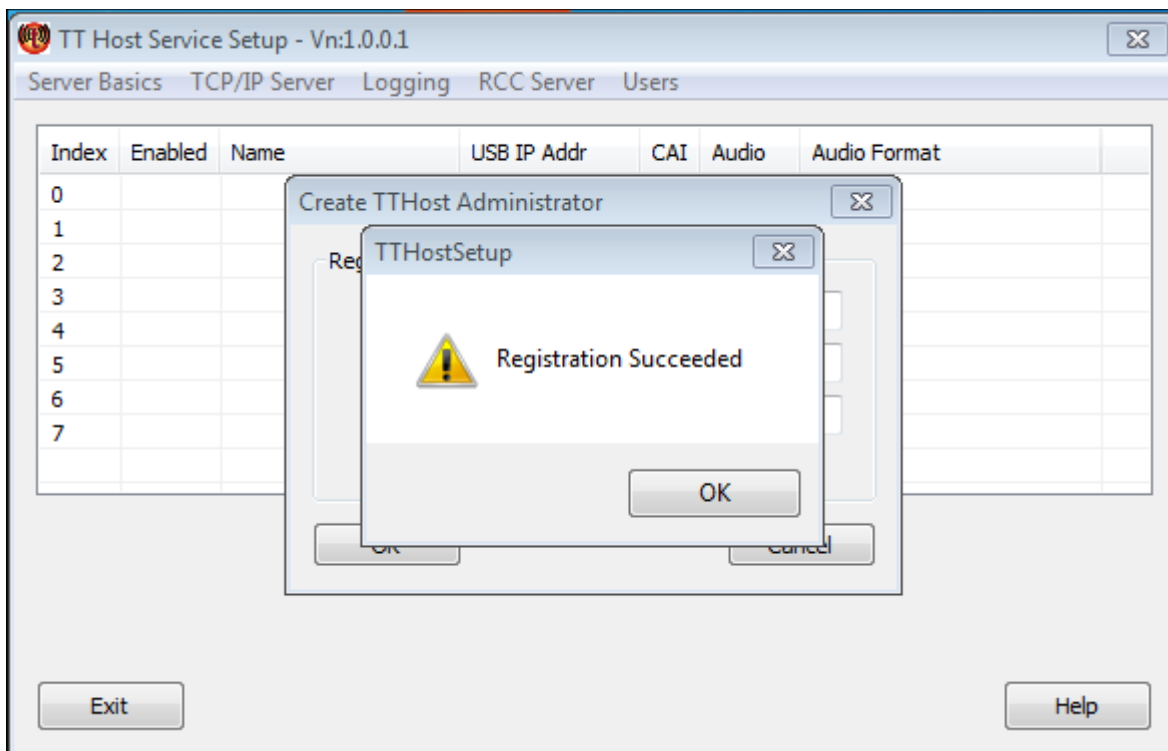
**Caveat:** Do not use a password that you use for other accounts, as currently this password is stored in clear text on the web server.



In a new installation, if you intend using an email address that was previously registered, you will receive an error (see below). In this case please contact me.



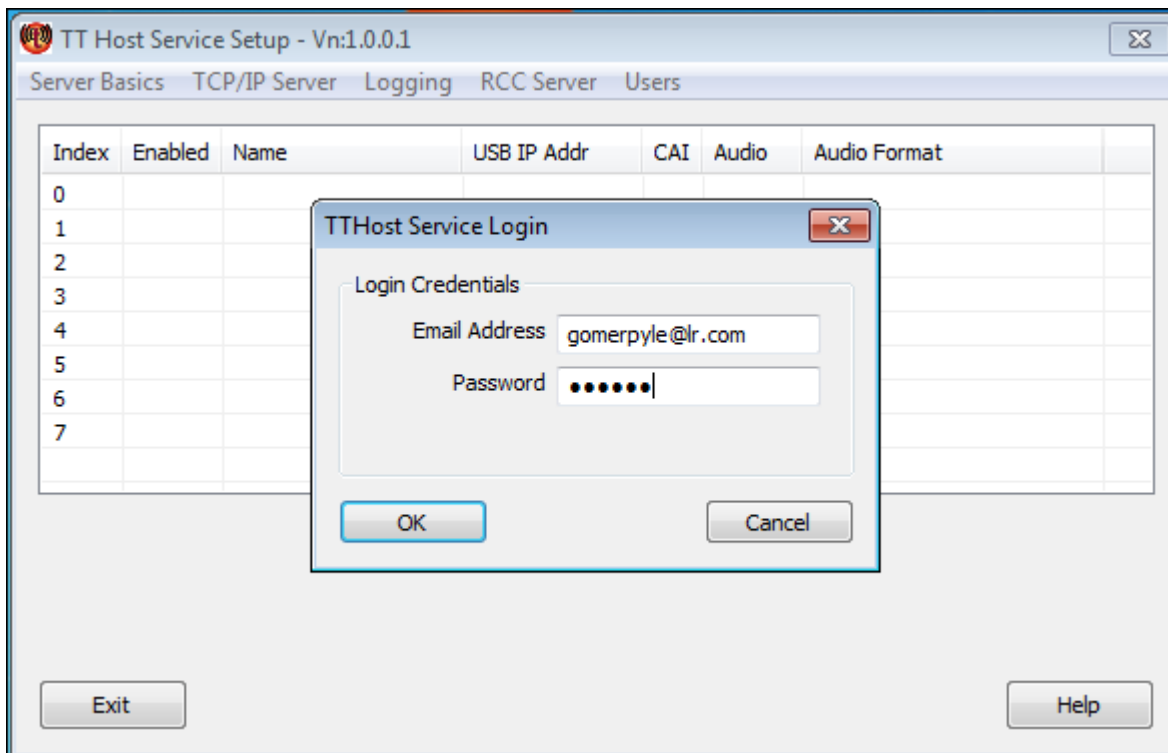
On Registration success you'll see the following dialog. Pressing OK will now allow you to configure the *TTServer/TTService*.



## Subsequent Logins for Configuration Updates.

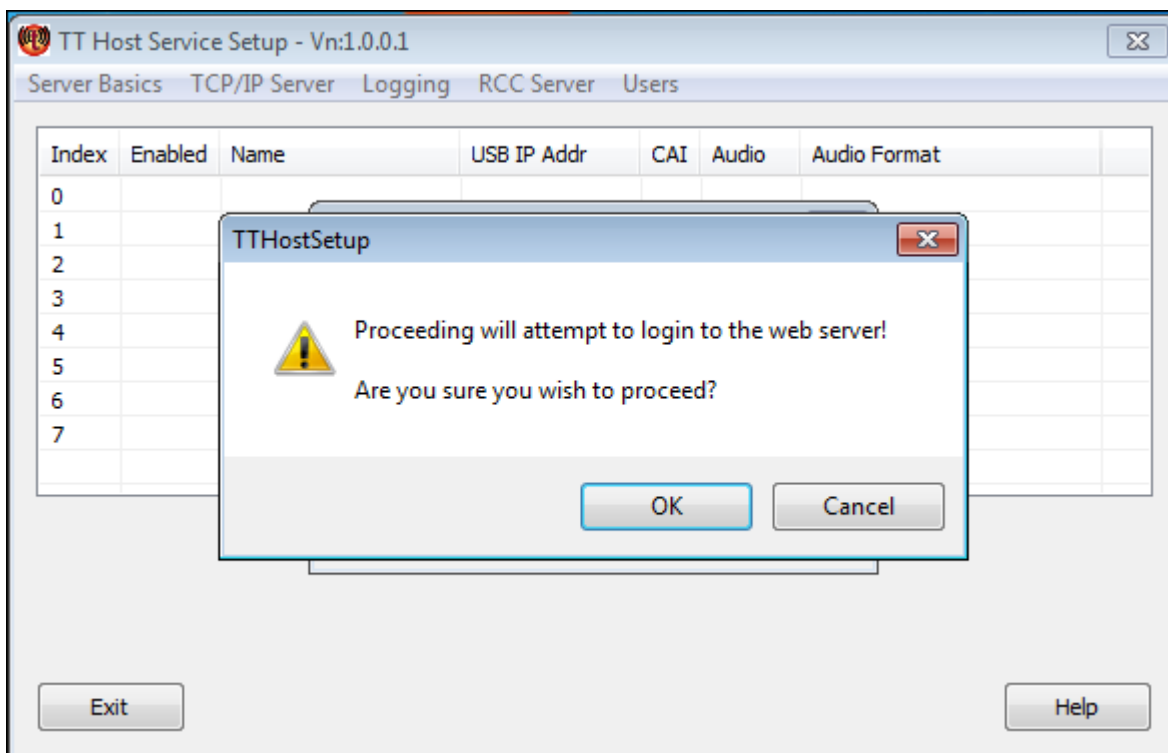
If after the initial setup is run, you decide to alter the Server configuration information, you'll be required to run **TTHostSetup.exe** again.

When running this application on the 2nd or subsequent launches you will need to login to the Web Server using your already Registered account, you will see similar dialogs to those discussed for the Initial Registration Setup - until the connection to the web server is established, then a **TTHost Service Login** dialog will be displayed:-

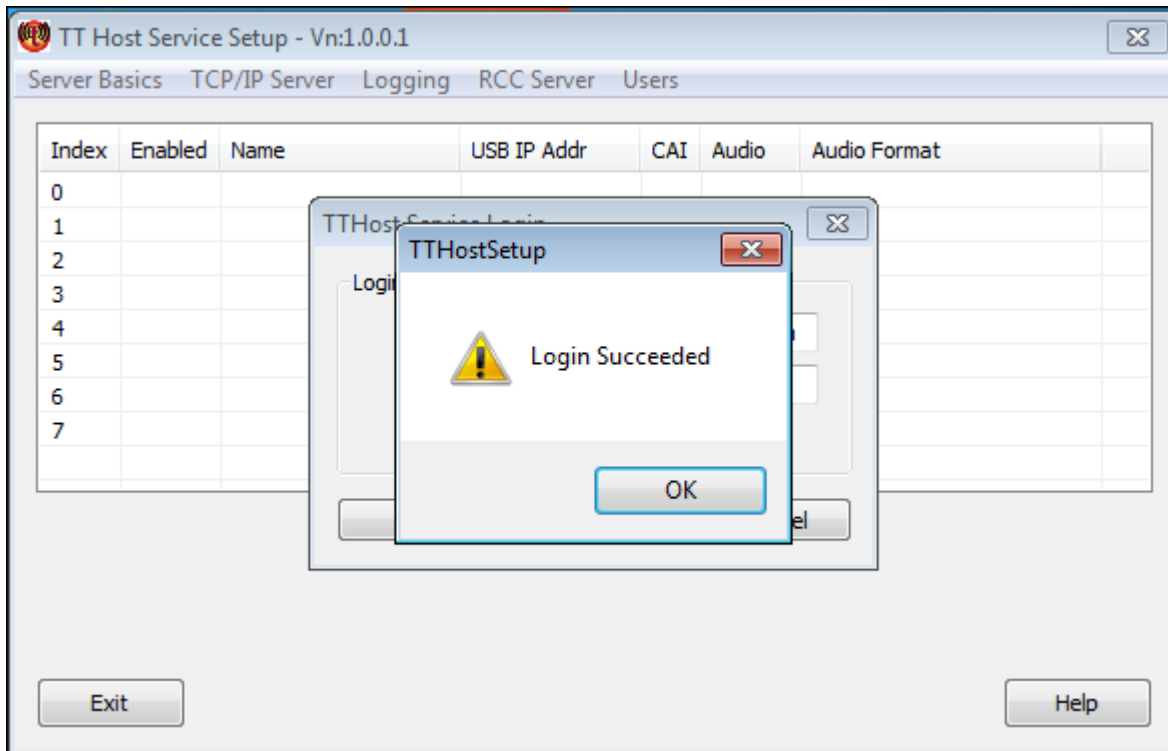


Enter your registered email/username and password and press OK.

You'll see the following warning dialog - just hit OK.



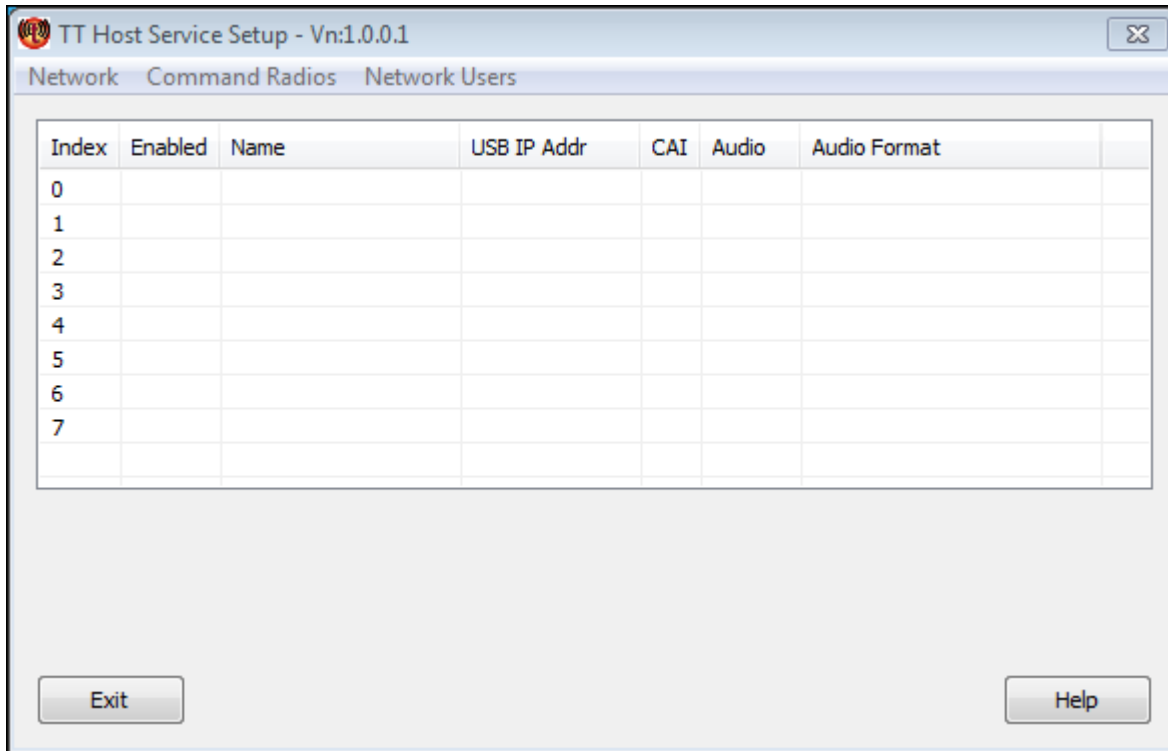
If you don't see the following dialog then you've most probably entered incorrect credentials - try again - but if you try too many times then your IP address may be banned.





## Configuration of the TTServer/TTService Server using *TTHostSetup.exe*

Once registered and logged in, the initial **TT Host Dialog Service Setup** dialog will be empty, as you will not have enabled or configured any Command/Base Station Radios:-




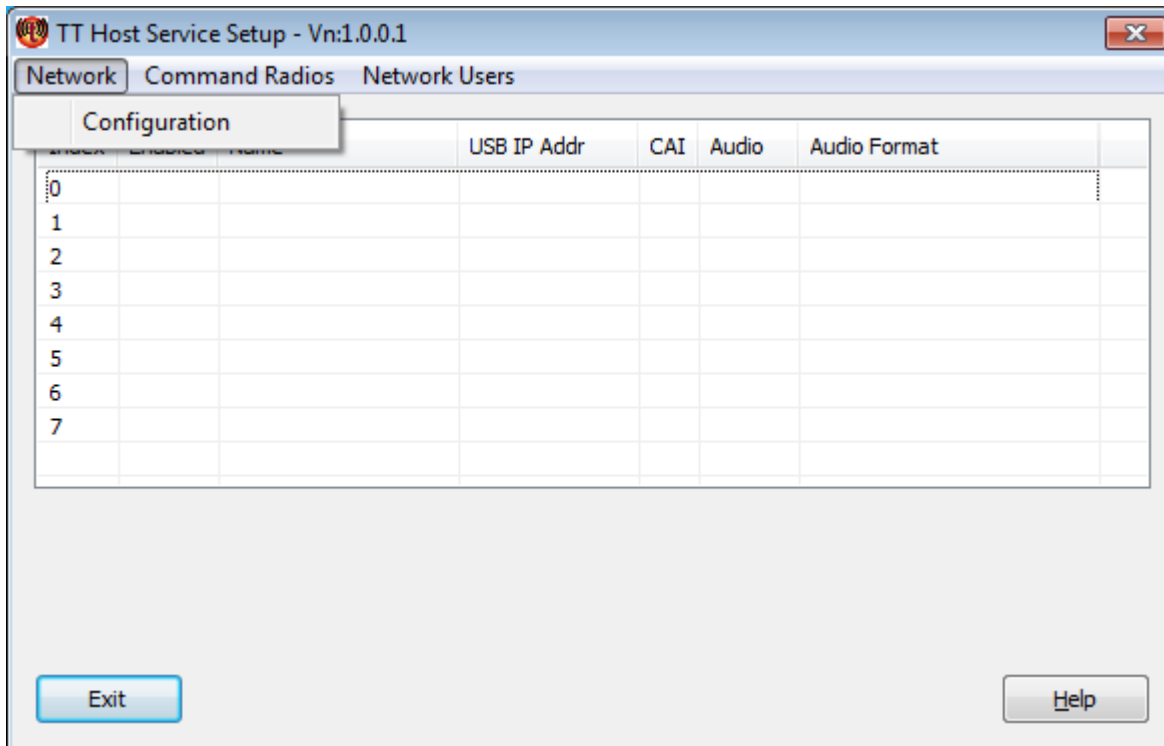
Three Menu Options are currently available:-

- **Network** - allows to select the Network adapter and it's IP plus set a non default Port number
- **Command Radios** - configure up to 8 concurrently connected Command/Base Station Radios
- **Network Users** - define the credentials for your LAN clients

## Network configuration

Initially and before proceeding you should decide on the Network adapter and port on which you wish the **TTServer/Service** to listen.

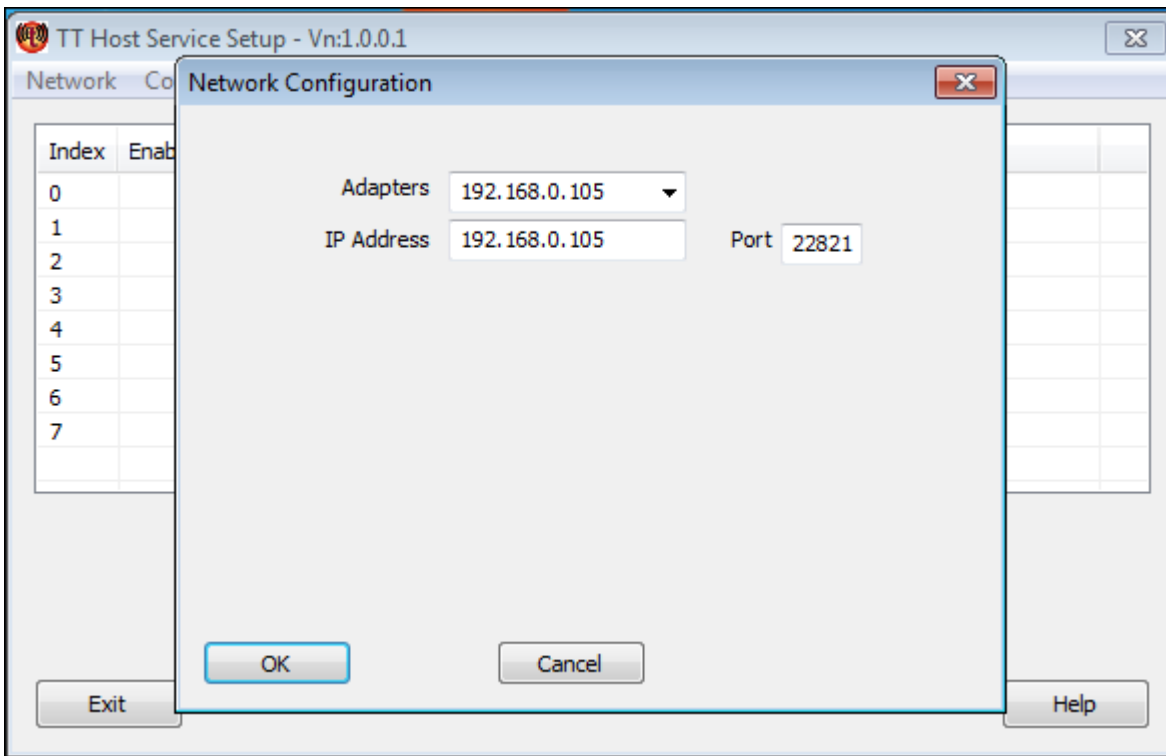
 If you are unsure what this means, then you can probably skip this section and the default values will be used.



The IP address of this PC (plus the selected Port), is the information that your network clients will require to "connect to" and to use and access the services provided by the **TTServer/TTService**.

The default is the "localhost", or IP address **127.0.0.1** or the IP of your PC's primary network adapter - but you may choose an alternative adapter from the dropdown list.

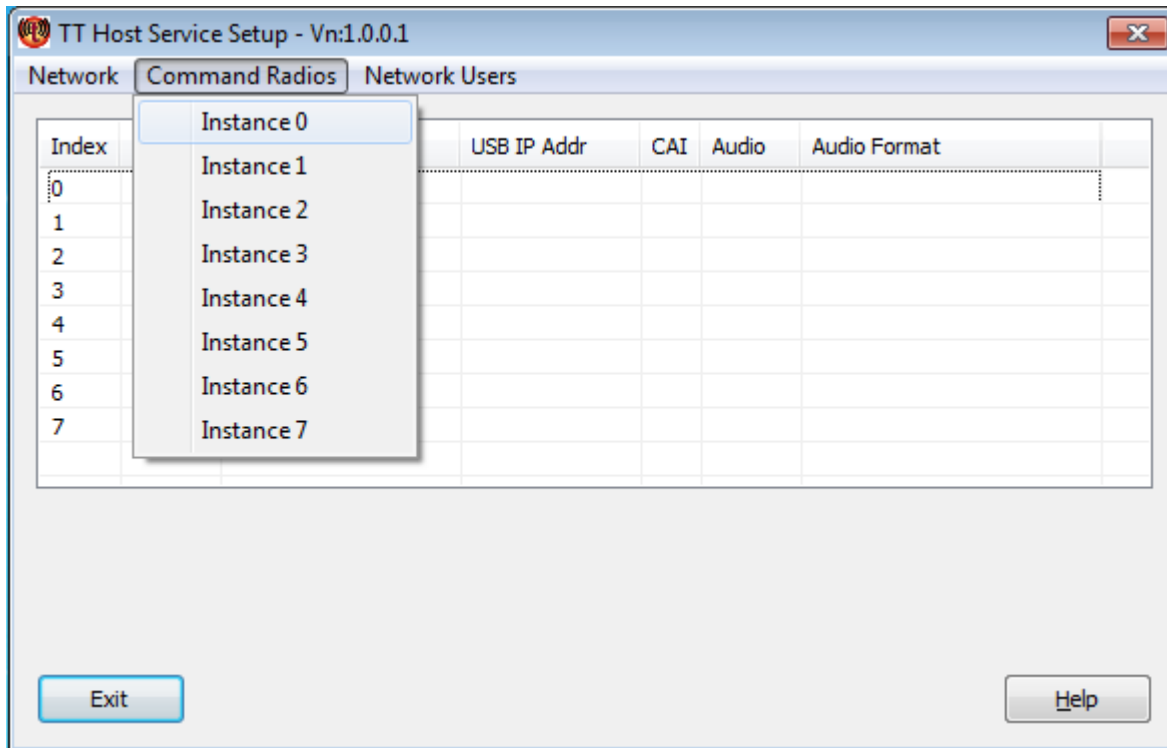
The TTServer port is in the unreserved range and defaults to **22821**.



## Configuring up 8 x Control Radios is then

The TTService/TTServer can handle up to 8 concurrently connected Control or Base Station radios. They are considered as 8 instances (or indexes/indices) of a Radio Command & Control application.

You can select an index or Instance using the menu selections or by double clicking the mouse on one of the rows (0 to 7) in the Radio Command & Control list



As a demonstration I'll double click on Row/Index 2 and use a **Snagit** to add YELLOW numbered setup steps on the image.

## Radio Command and Control Configuration for a single Control/Base Station radio

**Step #1** indicates that the current configuration is dealing with RCC instance #2.

**Step 2** indicates the check box that determines if the instance will be allowed to run in the server.

**Step #3** is an edit field where you can give this instance a name meaningful to you.

**Ste #4** is a dropdown box that will show you the available network adapters including the detected Motorola's radio USB defined ones.

**Caveat:** The radio must be turned on and connected for it to be detected. If you missed this step you will need to re-run TTHostSetup to have them included.

**Step #5** this field must hold the Motorola CPS programmed CAI value for this radio.

**Step #6** allows you to enable the Audio features for this radio. You will need a free Audio Input/Output device for each radio that is enabled. The rest of the fields will be disabled while the Adudio Device Selection is disabled.

The screenshot shows the 'Radio Command and Control Configuration' dialog box. It is divided into several sections:

- RCC Server:** Contains 'Server Instance' (2) and 'Instance Name' (Un-named Instance). A checkbox for 'Enabled' is present but unchecked. Callout 1 points to the title bar, callout 2 to the 'Enabled' checkbox, and callout 3 to the 'Instance Name' field.
- USB Connection:** Contains 'Adapter' (192.168.10.2), 'USB IP Address' (192.168.10.1), and 'Network CAI' (12). Callout 4 points to the 'Adapter' dropdown, and callout 5 points to the 'Network CAI' field.
- Audio Device Selection:** Contains radio buttons for 'Disabled' (selected) and 'Radio Audio'. Callout 6 points to the 'Radio Audio' button.
- Audio Codec/Format Information:** Contains 'Format Selection' (11.025 kHz, mono, 8-bit).
- Radio Audio Interface Devices:** Contains 'PC Input Selection' (Microphone (2- USB AUDIO )) and 'PC Output Selection' (Speakers (Realtek High Definiti)).
- Local Speaker Type:** Contains radio buttons for 'None', 'Powered' (selected), 'Non Powered', and 'Handset'.
- Recording Storage:** Contains a text field with '.\Voice' and a browse button (...).
- WAV File Announcements:** Contains a text field with '.\WavFiles' and a browse button (...).

At the bottom are 'OK' and 'Cancel' buttons.

The following images are from existing installed radios on my test server. It has 2 x Motorola radios (DM 3600 & DP 3600) attached, it also has multiple USB audio devices attached.

### DM 3600 Mobile Radio (Instance 0)

The screenshot shows the 'Radio Command/Control Configuration' dialog box for Instance 0. The window title is 'Radio Command/Control Configuration' with a close button in the top right corner. The configuration is organized into several sections:

- RCC Server:** 'Server Instance' is set to '0' and 'Enabled' is checked. 'Instance Name' is 'Mobile on 192.168.10.1'.
- USB Connection:** 'Adapter' is '192.168.10.2', 'USB IP Address' is '192.168.10.1', and 'Network CAI' is '12 (Common Air Interface)'.
- Audio Device Selection:** 'Radio Audio' is selected with a radio button.
- Audio Codec/Format Information:** 'Format Selection' is '11.025 kHz, mono, 8-bit'.
- Radio Audio Interface Devices:** 'PC Input Selection' is 'Microphone (Realtek High Defir)' and 'PC Output Selection' is 'Speakers (Realtek High Definiti)'.
- Local Speaker Type:** 'Powered' is selected with a radio button.
- Recording Storage:** The path is '.\Voice'.
- WAV File Announcements:** The path is '.\WavFiles'.

At the bottom, there are 'OK' and 'Cancel' buttons.

DP 3600 Portable Radio (RCC Instance #1)

**Radio Command/Control Configuration** [X]

**RCC Server**

Server Instance: 1  Enabled

Instance Name: Portable on 192.168.20.1

**USB Connection**

Adapter: 192.168.20.2

USB IP Address: 192.168.20.1

Network CAI: 12 (Common Air Interface)

**Audio Device Selection**

Disabled  Radio Audio

**Audio Codec/Format Information**

Format Selection: 11.025 kHz, mono, 8-bit

**Radio Audio Interface Devices**

PC Input Selection: Microphone (2- USB AUDIO )

PC Output Selection: Speakers (2- USB AUDIO )

**Local Speaker Type**

None  Powered  Non Powered  Handset

**Recording Storage**

.\Voice [...]

**WAV File Announcements**

.\WavFiles [...]

OK Cancel

## Network Users

This section will be on hold atm and thus is currently unimplemented - until I get some suggestions on which direction to go.

It is basically a way of having the TTServer system administrator assign Usernames and Passwords to the Networked users/application. I'm suggesting that the administrator can limit the available server functionality and access based on username and password.