

SAN FRANCISCO STATE

UNIVERSITY HOUSING

2021-2022



Learn here.
Live here.
Love it here.



SF STATE

We are excited that you are considering SF State to be your home while you attend the university. Although the daily operations and interactions within our residential communities are a bit different than past semesters due to the pandemic, our goal remains the same – to provide our residents with a comfortable, safe, and supportive living-learning environment that will enhance their academic and co-curricular pursuits.



BENEFITS

of living on campus

San Francisco State's residential communities are located in the quiet, southwestern corner of one of the most exciting, culturally rich, and picturesque cities in America. Imagine, living just one mile from the Pacific Ocean and only a short distance from all that San Francisco has to offer.

SUCCESSFUL *living*

10%

HIGHER
GPA

: On average, freshmen who live on campus have a
: 10% higher GPA and greater success in college than
: those who live off campus.

58%

HIGHER 4-YEAR
GRADUATION
RATE

: By living on campus, students are able to take
: more units each semester and have a 58% higher
: 4-year graduation rate.

AFFORDABLE *living*



In most instances, the cost of living on campus is less than living off campus. Plus, with fewer out of pocket expenses and no commute, you'll save both time and money.

COMFORTABLE *living*



At SF State, you will find a variety of housing options with everything you need to make you feel comfortable in your new home and to help you make a smooth transition to college life.

COMMUNITY *living*



Residential communities are a great way to get involved, make connections, and share common interests with other members of your community.

CONVENIENT *living*



Living on campus allows you to be close to your classes, the library, the bookstore, dining commons, and other campus resources.

make yourself at HOME

San Francisco State strikes an ideal balance between easy access to exciting urban life and calm spaces for study and contemplation. Whatever your interests, you'll never be bored when you live on campus.

more than just a place to sleep...

STUDY



University Housing provides a variety of resources to help you succeed academically including indoor and outdoor study areas, free Wi-Fi, and access to computer labs.

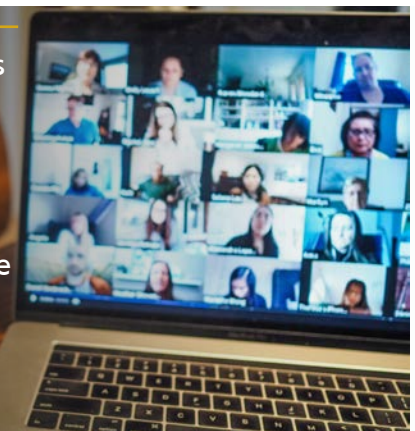
RELAX



ENGAGE



There are hundreds of ways to get involved at SF State, but living on campus provides you with even more opportunities to engage in campus life.



PLAY



When you live on campus, you'll have everything you need to live the lifestyle you want and make the most of your college experience.



EXPLORE





we're here FOR YOU

A variety of resources and assistance is available through our staff and student leaders when you live on campus.

live, learn, engage, excel

1:35-55
RESIDENT ASSISTANT
TO RESIDENT RATIO

SUPPORTING YOU

Our residential communities have a network of support staff focused on assisting residents so that they are successful both in and out of the classroom. Each community has a 24-hour support desk and in-house student leaders committed to connecting you to resources and opportunities that will help you make the most of your on-campus experience.

OPPORTUNITIES AROUND

Each residential community provides residents with access to organizations, activities, and programs that foster student learning, professional development, and personal growth. These opportunities will connect you with others who share your interest so you can build lasting friendships and maintain a sense of belonging.

MEANINGFUL & MEMORABLE EXPERIENCES

Engaging in community events and programs also allows you to enjoy new experiences and explore various academic, cultural, professional, social justice and wellness interests that may ultimately evolve into a new passion, create lasting change in your life, or guide you towards the next step in life's journey after you graduate.

choose to be...

INDEPENDENT

CHOOSE YOUR LEVEL OF INDEPENDENCE. Whether you prefer dorm, suite, or apartment-style housing, SF State has a variety of housing communities, room types, and meal plans for you to choose from. Whatever you're looking for, we have a space that's right for you.

FIT & HEALTHY

MAKE HEALTHY LIFESTYLE CHOICES. With Lake Merced, the Mashouf Wellness Center, and City Eats just steps from our residential communities, you can easily go for a walk, enjoy a workout, or grab a fresh and healthy meal.

WORRY-FREE

CHOOSE FINANCIAL PEACE OF MIND. When you choose to live on campus, you won't have to worry about extra expenses like utilities, meals or other services and resources that would normally cost extra with off-campus housing.

	ON CAMPUS	OFF CAMPUS
HOUSING	\$	\$
UTILITIES	✓	\$
MEALS	✓	\$
FURNITURE	✓	\$
MAINTENANCE & SECURITY	✓	\$
INTERNET	✓	\$
COMMUNITY PROGRAMS	✓	\$

When you live on campus, you'll be part of a vibrant campus community where an abundance of opportunities await right outside your door.

it's all about your CHOICES

LAKE MERCED >>>

<<< MARY PARK HALL

<<< MARY WARD HALL

<<< UNIVERSITY PARK NORTH

MASHOUF WELLNESS CENTER >>>

CITY EATS >>>

<<< TOWERS @ CENTENNIAL SQUARE

VILLAGE @ CENTENNIAL SQUARE >>>

<<< CESAR CHAVEZ STUDENT CENTER

<<< J. PAUL LEONARD LIBRARY

<<< UNIVERSITY PARK SOUTH

<<< MANZANITA SQUARE

 **TAKE A VIRTUAL TOUR OF CAMPUS**
youvisit.com/tour/sfsu



MEAL PLANS

Your meal plan ensures that you always have a nutritious meal.

Your meal plan provides you with a variety of selections from multiple cuisine platforms at City Eats and the Bricks. All meal plans include flex dollars, which can be used to purchase additional meals or retail items from one of the above locations.

AVAILABLE OPTIONS

19 MEALS per week	15 MEALS per week	12 MEALS per week	5 MEALS* per week
----------------------	----------------------	----------------------	----------------------

*University Park North residents only.

i Available meal plan options and dining facilities are subject to change.

For more information about meal plan prices & flex dollars, visit housing.sfsu.edu/dining.



RESIDENCE HALL *living*

One of the best ways to experience college life is living in a residence hall. Not only will you have a comfortable place to live, but you will be part of an exciting community where you can meet people, build friendships, get involved in activities, and grow both personally and academically.



SUITE-STYLE *living*

Students who prefer more independence and housing with more of an "apartment-feel" will find what they need in our full and partial suites.

housing & meal plan OPTIONS



Residential Dining Services is dedicated to serving healthy food options using fresh and sustainable ingredients while providing outstanding customer service.



APARTMENT *living*

SF State's apartment living options offers students the best of both worlds - independence and community living. Students will enjoy comfortable living spaces while having access to community resources, support, and opportunities to engage with their community.



Room occupancy may not be to full capacity and building availability may change in response to the pandemic and in accordance with San Francisco Department of Public Health guidelines.

TAKE A VIRTUAL TOUR OF OUR HOUSING COMMUNITIES | youvisit.com/tour/sfsu/90483

VIEW HOUSING FEES* | housing.sfsu.edu/current-fee-schedule

*Housing fees vary by community, room type, occupancy, and meal plan.

TRADITIONAL
RESIDENCE HALLS

1ST YEAR
RESIDENTS

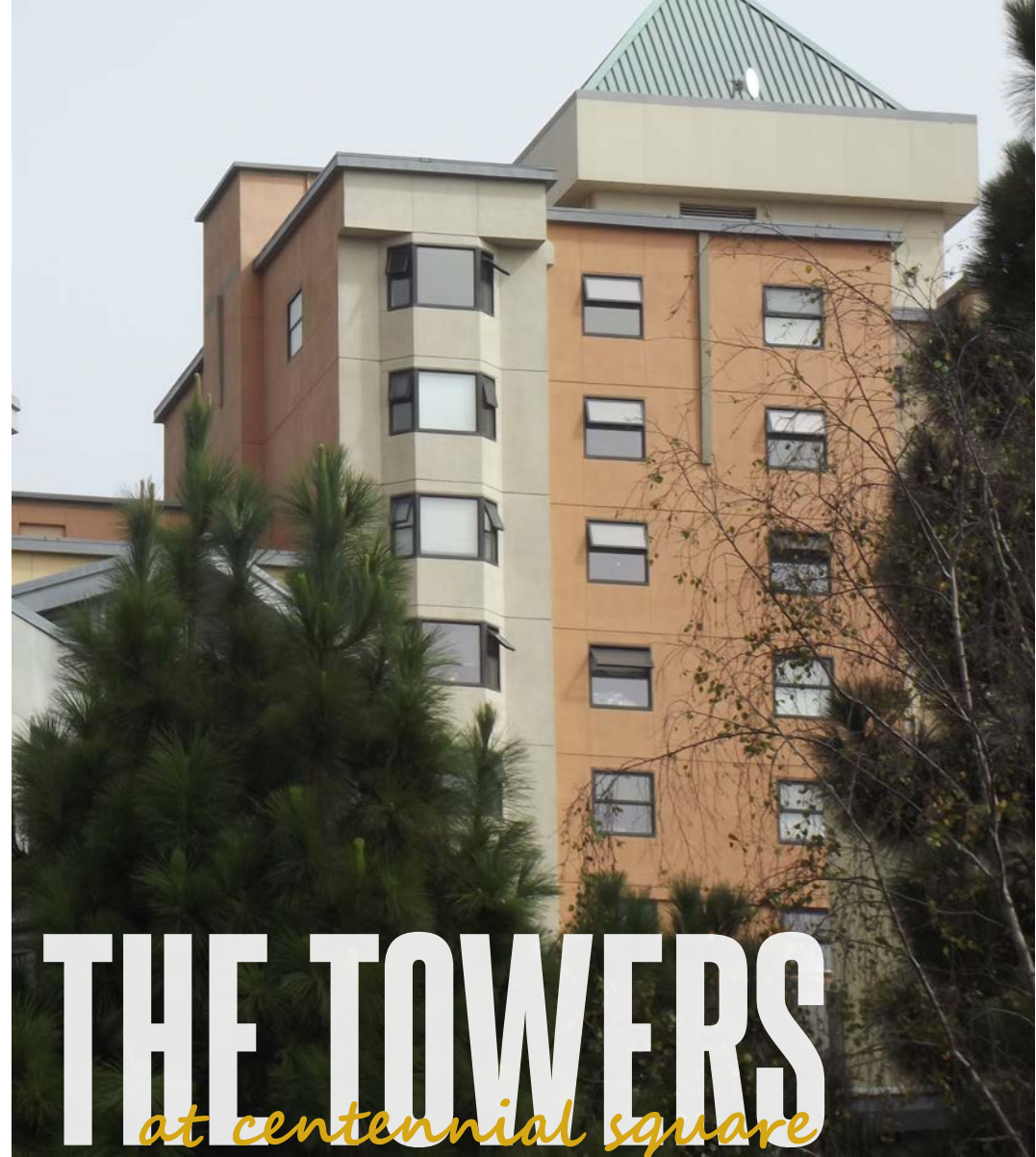
DOUBLE
ROOM TYPE

9
INSTALLMENTS

MANDATORY
MEAL PLAN



MARY PARK & MARY WARD



THE TOWERS



FURNISHED FULL & JUNIOR SUITES	1 & 2 BEDROOMS	1ST YEAR & 2ND YEAR+ RESIDENTS	DOUBLE & TRIPLE (TCS only) ROOM TYPES	9 INSTALLMENTS	MANDATORY MEAL PLAN
--------------------------------------	-------------------	--------------------------------------	--	-------------------	------------------------

SF State has two traditional residence halls on campus, Mary Park Hall (MPH) and Mary Ward Hall (MWH). When living in our residence halls, students will enjoy the close proximity to classes, the dining center and recreation, as well as being part of a community full of resources and support.

ROOM FEATURES

-  Bed with XL twin pillow-top mattress
-  Desk with chair
-  Closet + extra storage
-  Gender-specific common bathrooms

BUILDING FEATURES & AMENITIES

- ▶ Limited access community
- ▶ 24-hour, on-call staff
- ▶ Free Wi-Fi
- ▶ On-site laundry facilities
- ▶ Community kitchen
- ▶ Community lounge
- ▶ Vending machines in lobby
- ▶ Bike racks
- ▶ Steps from City Eats and the Mashouf Wellness Center

The Towers at Centennial Square offers full suite (TCS) and junior suite-style (TJS) living for students who are looking for more privacy and space. Although students will have more independence, they will still have plenty of opportunities to engage in community life and enhance their college experience.

BUILDING FEATURES & AMENITIES

- ▶ Limited access community
- ▶ 24-hour, on-call staff
- ▶ Free Wi-Fi
- ▶ On-site laundry facilities (located at TCS)
- ▶ Community lounge (located at TJS)
- ▶ Academic Success Center (located at TJS)
- ▶ Vending machines in lobby (located at TJS)
- ▶ Bike racks
- ▶ Steps from City Eats and the Mashouf Wellness Center

SUITE FEATURES

-  Bed with XL twin pillow-top mattress
-  Desk with chair
-  Closet, dresser or armoire
-  Private bathroom
-  Fully furnished living & dining room (TCS only)
-  Kitchenette (TCS only)

FURNISHED
APARTMENTS

2 & 3
BEDROOMS

SINGLE &
DOUBLE
ROOM TYPES

1ST YEAR &
2ND YEAR +
RESIDENTS

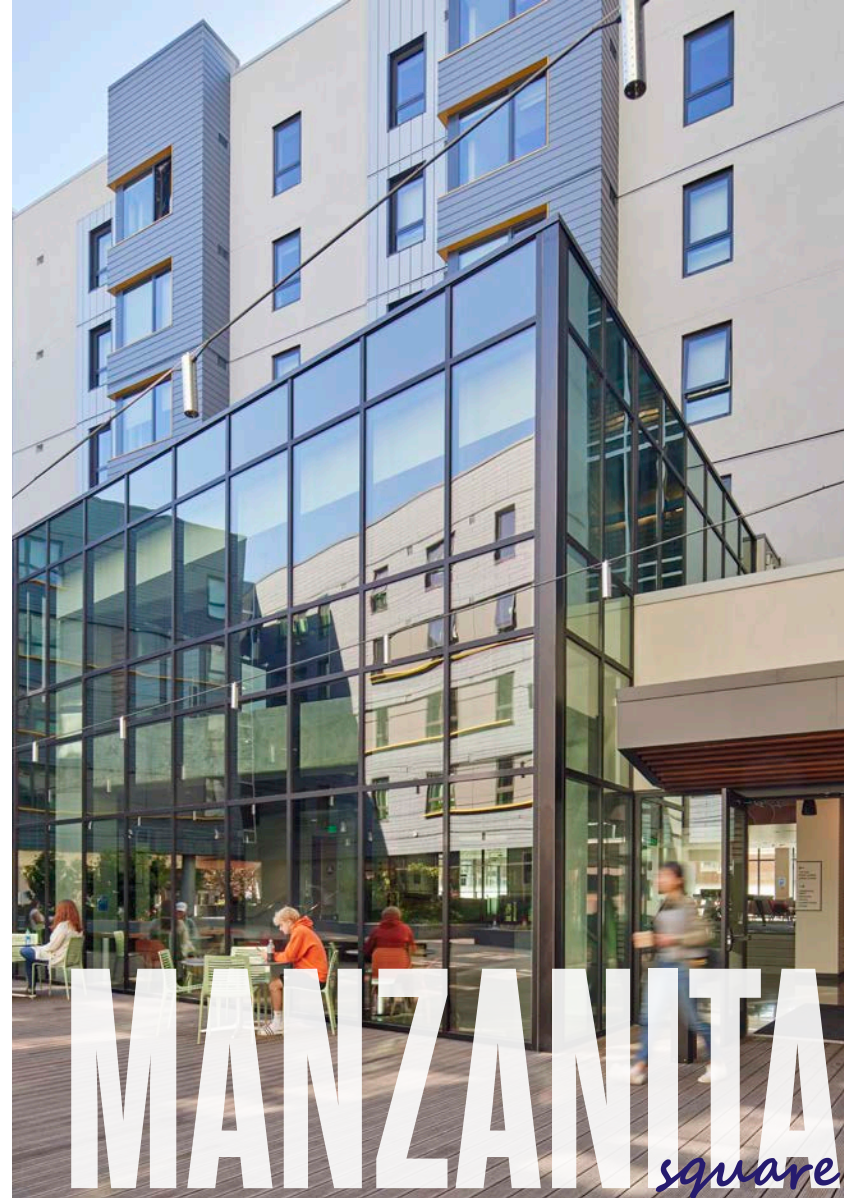
9
INSTALLMENTS

MANDATORY
MEAL PLAN



THE VILLAGE

at centennial square



MANZANITA

square



Photos by Bruce Damonte

FURNISHED
APARTMENTS

EFFICIENCY
1, 2, 3 & 4
BEDROOMS

2ND YEAR +
RESIDENTS

SINGLE &
DOUBLE
ROOM TYPES

12
INSTALLMENTS

OPTIONAL
MEAL PLAN

The Village at Centennial Square (VCS) is centrally located on campus and offers students the full independent lifestyle experience by incorporating apartment-style living with several eating options and a convenience store.

APARTMENT FEATURES



Bed with XL twin
pillow-top mattress



Desk without
chair



Closet, dresser
or armoire



2 private
bathrooms



Fully furnished living
& dining room



Fully equipped
kitchen

BUILDING FEATURES & AMENITIES

- ▶ Limited access community
- ▶ 24-hour, on-call staff
- ▶ Free Wi-Fi
- ▶ On-site laundry facilities
- ▶ Bike racks
- ▶ Courtyard
- ▶ Assigned parking space available for an extra fee
- ▶ Steps from City Eats and the Mashouf Wellness Center

Manzanita Square (MSQ) offers apartments in SF State's newest housing building. Located just steps away from campus, this state-of-the-art building was designed to offer a comfortable living and learning environment.

BUILDING FEATURES & AMENITIES

- ▶ Limited access community
- ▶ On-site management and maintenance
- ▶ 24-hour, on-call staff
- ▶ Free Wi-Fi
- ▶ On-site laundry facilities
- ▶ Study lounges
- ▶ Courtyard
- ▶ 24-hour Academic Success Center with free printing

Manzanita Square is owned & operated by American Campus Community. | americancampus.com

APARTMENT FEATURES



Bed with XL twin
pillow-top mattress



Desk with chair



Closet, dresser
or armoire



1-2 private
bathrooms



Fully furnished living
& dining room



Fully equipped
kitchen



UNIVERSITY PARK north



FURNISHED
APARTMENTS

1, 2, & 3
BEDROOMS

SINGLE &
DOUBLE
ROOM TYPES

2ND YEAR +
RESIDENTS

9
INSTALLMENTS

OPTIONAL
MEAL PLAN

FURNISHED &
UNFURNISHED
APARTMENTS

1, 2, & 3
BEDROOMS

2ND YEAR +
RESIDENTS

SINGLE &
DOUBLE
ROOM TYPES

9
INSTALLMENTS

MANDATORY
MEAL PLAN

The University Park North (UPN) apartments are located at the north end of campus and across the street from the Stonestown Galleria mall. In this community, students will enjoy independent living and the convenient location next to campus, shopping, restaurants, and public transportation.

APARTMENT FEATURES

Furnished units only

All units



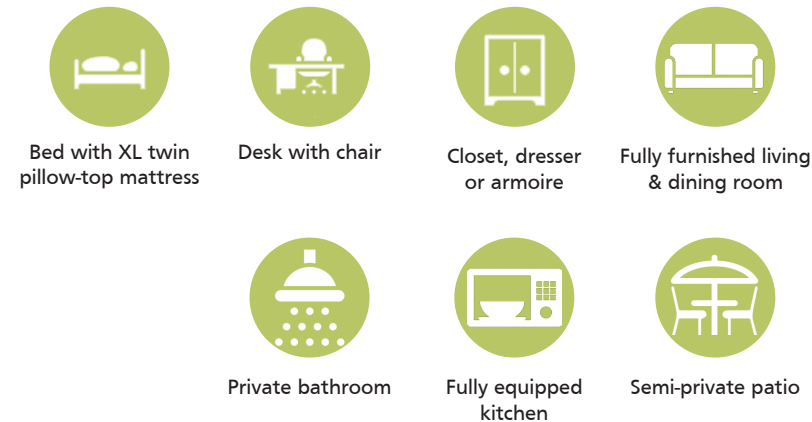
BUILDING FEATURES & AMENITIES

- ▶ Limited access community
- ▶ 24-hour, on-call staff
- ▶ Free Wi-Fi
- ▶ On-site laundry facilities
- ▶ Bike racks
- ▶ Assigned parking space available for an extra fee

BUILDING FEATURES & AMENITIES

- ▶ Townhome style buildings
- ▶ 24-hour, on-call staff
- ▶ Free Wi-Fi
- ▶ On-site laundry facilities
- ▶ Bike racks
- ▶ Assigned parking space available for an extra fee

APARTMENT FEATURES



The University Park South (UPS) apartments are located at the south end of campus across from the J. Paul Leonard Library and the Administration building. These apartments provide students a comfortable, spacious, and private living environment for a true independent lifestyle.

APPLY for housing

APPLYING EARLY = MORE ROOM OPTIONS

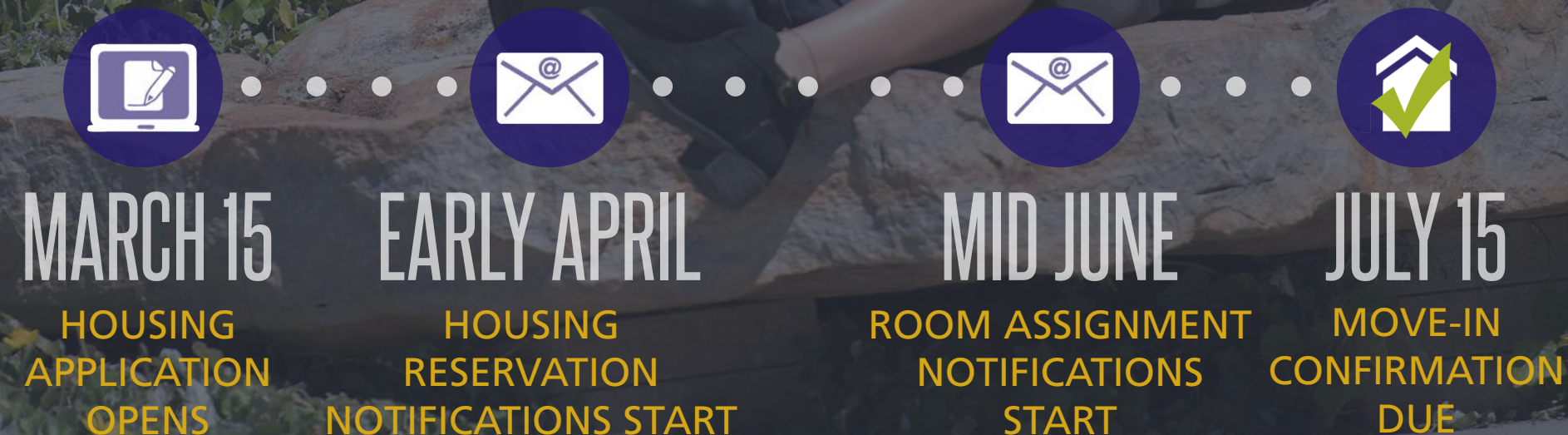
On-campus housing is limited, so the earlier you apply, the better chance you'll have of selecting your preferred room type.

4 EASY STEPS

- 1 BECOME A GATOR**
Apply to SF State & Accept the Admissions Offer (AAO) by the May 1, 2021 deadline.
- 2 COMPLETE THE APPLICATION**
Click the 'Apply Now' button on the housing.sfsu.edu/apply page to access the housing portal. Log in using your SF State ID number, then select the community you wish to apply to. *Be sure to select 3 alternate communities in case your preferred community is closed due to the pandemic.
- 3 SIGN THE LICENSE AGREEMENT & PAY THE INITIAL FEE**
After completing the application, click to accept the terms of the License Agreement and pay the \$200 initial fee. The \$200 initial fee includes a \$130 credit applied to your first installment, a \$40 activity fee, and a \$30 non-refundable application fee. Please Note: Your application will not be finalized until you complete this step.
- 4 CONFIRM YOUR SPACE**
After receiving your room assignment notification, log back into the housing portal and complete the form to confirm your space. Please Note: Failure to complete this step may result in the cancellation of your room assignment.

i Depending on the status of COVID-19, guidelines set forth by the San Francisco Department of Public Health may change and Housing eligibility requirements may be applicable at the time of application.

TIMELINE



To apply for housing or for more information visit:

 housing.sfsu.edu

CONNECT WITH US

STUDENT HOUSING OFFICE

800 Font Boulevard
San Francisco, CA 94132
(415) 338-1067
housing@sfsu.edu



**SAN FRANCISCO
STATE UNIVERSITY**