

Shabek Pro Actions Panel V1.0

©2018 Hussain Al-Bahrani



Table of Contents

SPA Panel LICENSE AGREEMENT	3
OVERVIEW	4
List of Features	5
Installation Guide	10

SPA Panel LICENSE AGREEMENT

This license agreement between hussainalbahrani.net and the purchaser (you), establishes the conditions under which all hussainalbahrani.net resources are purchased and downloaded.

The purchaser may include licensed hussainalbahrani.net items, royalty free, in personal and commercial projects, including computer games, film and video; web, software, and multimedia design; and advertising. However, hussainalbahrani.net remains the sole owner of any and all licensed resources. Therefore, the purchaser may not lend or sell hussainalbahrani.net resources, nor resell hussainalbahrani.net licenses, without prior written consent from hussainalbahrani.net.

All hussainalbahrani.net licensed items are provided as originals. Purchasers may not place any form of hussainalbahrani.net resources in archives or offer them on the Internet.

hussainalbahrani.net is not liable for any damage caused by the use or misuse of hussainalbahrani.net resources.

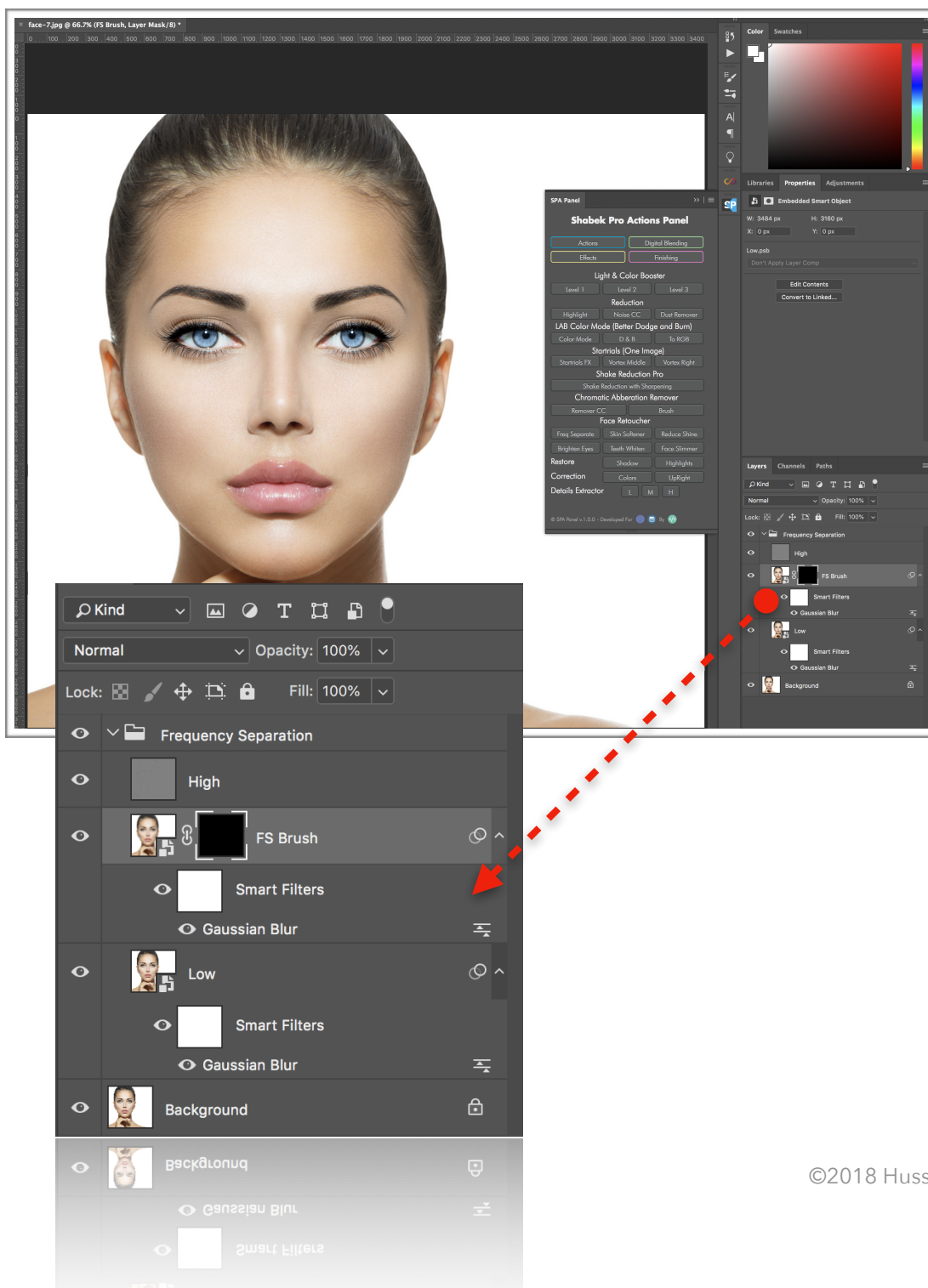
For any questions please contact me via email:

info.spa.panel@gmail.com

OVERVIEW

One stop place to edit, enhance, resize and export your images, This Panel is created for Photographers with more than 85 buttons/actions.

The Panel is very easy to use, and we have included the most used and useful effects and actions that any photographer will need and its mostly non destructive with separate layers, smart layer, Filters and masks.



List of Features

Actions Tab:

- **Light & Color Booster** (Three Levels) Mixture of Enhancement and Booster for the colors and Lights
 - 1- Level 1
 - 2- Level 2
 - 3- Level 3
- **Reduction:**
 - 1- **Highlight** (Fix the over 100% highlights)
 - 2- **Noise CC** (Mix of Camera raw Noise reduction function and power of Layer and Mask to Selectively and precisely reduce the noise)
 - 3- **Dust Remover** (using Mask and Brush to remove sensor dust with ease!)
- **LAB Color Mode** (Better Dodge and Burn):
 - 1- **Color Mode** - Step 1 (converting the Mode to LAB)
 - 2- **D&B** - Step 2 (Better Dodge and Burn)
 - 3- **To RGB** - Step 3 (converting back to RGB Mode)
- **Star-trails** (One Image) - Convert
 - 1- **Startrails FX** (transfer your one still star image to startrail photo!)
 - 2- **Vortex Middle** (transfer your one still star image to very cool effect - the trail will start from the Middle - will take couple min's to work - depend on your PC!)
 - 3- **Vortex Right** (transfer your one still star image to very cool effect - the trail will start from the Right - will take couple min's to work - depend on your PC!)
- **Shake Reduction Pro**
 - 1- **Shake Reduction with Sharpening** (Fix the reduction in your image, and add sharpening in it)
- **Chromatic Aberration Remover** (two ways to removing the chromatic aberration issue)
 - 1- **Remover CC** (Using camera raw to remove the issue)
 - 2- **Brush** (Using a Brush to remove the issue selectively)
- **Face Retoucher** (powerful actions / ways to clean your portraits)

1- **Freq Separate** (Frequency Separation - is one of the best and powerful techniques to enhance and clean and sharpen the skin, layers and layer mask are included to work easily and un-destructively)

2- **Skin Softener** (Softening the skin using brush so you can do it selectively and you can use the effect amount that suites the image)

3- **Reduce Shine** (easy trick to reduce the shine using brush)

4- **Brighten Eyes** (Better way of brighten the eyes, two layers with masks are included to dodge or burn separately)

5- **Teeth Whiten** (we are always whiten our teeth with a brush :)

6- **Face Slimmer** (one click slimmer, smart filter is included so you can amend the effect)

- **Restore**

1- **Shadow** (Restore Shadows using calculation and curves, this will not flat the images completely only will focus on the dark areas)

2- **Highlights** (Restore Highlights using calculation and curves, this will not flat the images completely only will focus on the Highlights areas)

- **Correction**

1- **Colors** (easy method to color correction and removing the color cast on your images)

2- **UpRight** (using camera raw, UpRight, tilted horizon will be corrected)

- **Details Extractor** (a powerful tool to extract the small details - to add a taste of crunch on your image)

1- **L** (Low)

2- **M** (Medium)

3- **H** (High)

Effects Tab:

- **Orton Effect** (a Blur effect that enhances the lights and boost the colors - layers and masks are included to reduce the effect)

- **LAB BW Conversion** (A better way to convert your image to black and white, that mostly will affect the lights both darks and lights)

- **Soft Glow** (try it in your images its a nice effect - reduce the effect if it strong)

- **HDR CC** (one click HDR effect)

- **Desaturate CC** (reduce the color shine, desaturate the look, its really cool effect)

- **Miniature CC** (this effect will transform the image to a miniature)

- **Autumn Colors** (transform your greens to very nice autumn colors)
- **Vignette** (adding radial effect and selectively you can change it, or enhance the brightness)
- **Sunlight Effect** (a quick way to add warm and cool look of Sunlight that used very often in the internet !)
- **Tiny Planet Effect** (this effect is so cool! and can transform any image to a Tiny planet)
- **Cross Processing** (5 Styles)
 - 1- **Style 1** (mix of yellow and orange)
 - 2- **Style 2** (shade of Green, Purple and Blue)
 - 3- **Style 3** (Blue, and contrast!)
 - 4- **Style 4** (Mix of Purple, Yellow and Blue)
 - 5- **Style 5** (Mix of nice Pink and cool color)
- **Graduated Filters** (4 colors - 8 buttons) - H stands for High - L Stands for Low!
 - 1- **Black H&L**
 - 2- **Blue H&L**
 - 3- **Purple H&L**
 - 4- **Orange H&L**

Digital Blending Tab:

- **Auto Align**
Auto Align Layers (Just past all your images as layers and i will align it for you!)
- **Luminosity Mask Channels** (Very commonly used in Landscape photography, to selectively reduce or enhance the lights and shadows
 - 1- **Create All** (will create set of channels)
 - 2- **Delete All** (will Delete the created set in channels)
- **Blend If** (Blend method one)
 - 1- **Dark** (If your top layer is Dark, then it will blend with its below layer)
 - 2- **Bright** (If your top layer is Bright, then it will blend with its below layer)
- **Apply Image** (Blend method Two)
 - 1- **Dark** (If your top layer is Dark, then it will blend with its below layer)
 - 2- **Bright** (If your top layer is Bright, then it will blend with its below layer)
- **Graduated Mask** (Blend method Three)
 - 1- **Add** (this will add the graduated mask)
 - 2- **Refine Edge** (this will enhance it further)

- **HDR** (Two ways to do HDR blend)
 - 1- **One Image** (using only one Image)
 - 2- **HDR Blend** (Blend it using different images in the layers)
- **Remove unwanted people/ Smooth water & Clouds** (Two ways of removing or smoother the water and remove tourists and people in the image)
 - 1- **Mean Blend** (smart layer is added)
 - 2- **Median Blend** (if above not strong, then Median effect will be used)
- **Stacking**
 - 1- **Focus Stacking** (Get all your images on layers then click here, Focus stacking will be happening)
- **Selective Color Enhancement**
 - 1- **Color Enhancement** (enhancing the colors using curves and lights, focused on the main colors)

Finishing Tab:

- **Resize** (10 Sizes presets - For Longer edge)
 - 1- **320px**
 - 2- **480px**
 - 3- **640px**
 - 4- **720px**
 - 5- **800px**
 - 6- **960px**
 - 7- **1024px**
 - 8- **1280px**
 - 9- **1920px**
 - 10- **2048px**
- **Sharpening** (Different ways of Sharpening with or without noise reduction)
 - 1- **Unsharp Mask** (A popular way to do quick sharpening in PS)
 - 2- **Smart Sharpen / Noise Reduction** (A smarter way to do good sharpening in PS with Noise reduction layer)
 - 3- **Highpass** (One of good ways to do sharpening and added additional layer for stronger effect)
 - 4- **Shabek Advanced Sharpen** (special recipe to do sharpen and noise reduction)

5- **Zoom 100%** (its there as shortcut to see your picture in 100% zoom after sharpen and resizing is used)

- **Export** (Different ways of exporting your images)

1- **Convert Profile to sRGB** (Many photographers shot in Adobe1998 color space, this action will convert the image quickly to sRGB)

2- **Save as PNG** (quick way to convert to PNG - you will get full quality file)

3- **Save as JPG** (quick way to convert to JPEG - you will get full quality file)

4- **Layers to File (PNG)** (quick way to export all your layers separately - you will get full quality files)

5- **Save as PDF** (Export the open image to full quality PDF)

6- **PDF Presentation** (Export the open images to full quality PDF presentation - very good to show your work)

Please note, the Panel and its actions and scripts, is tested and working in CC versions, and any action you see CC is mentioned its require CC & Camera Raw to work.

Installation Guide

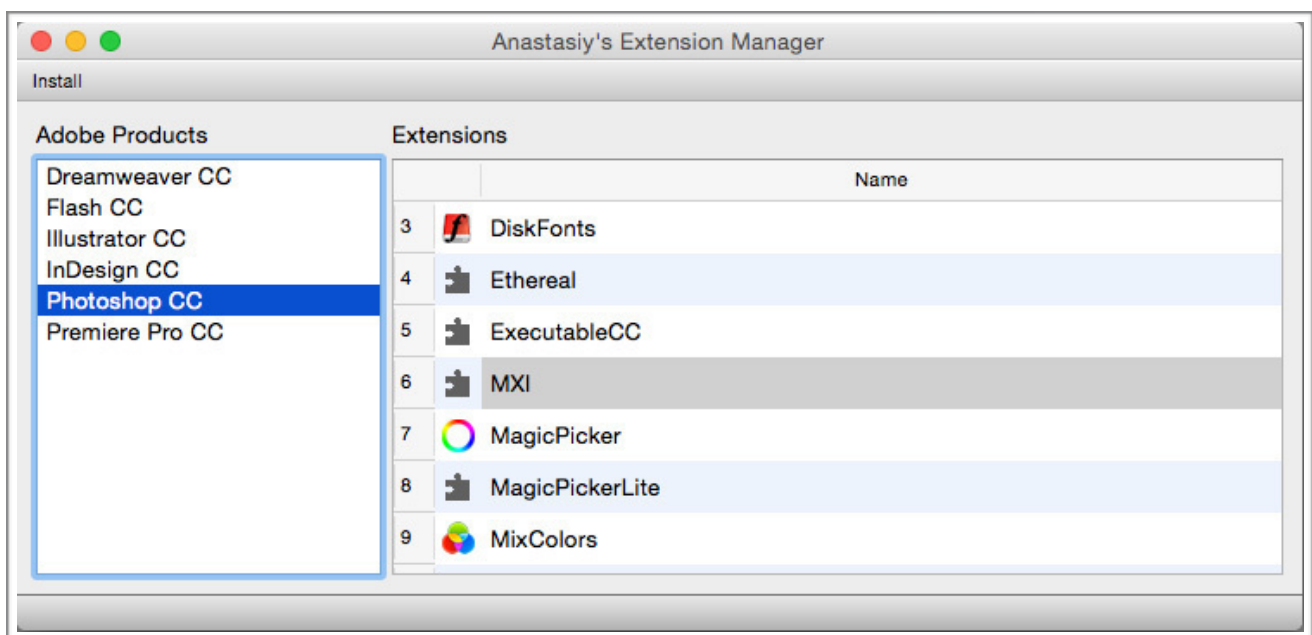
FOR ADOBE PHOTOSHOP CC-CC2018

In this guide you will find many methods of installation:

1. Installation by [Anastasiy's Extension Manager](#)
2. Installation by [ZXP Installer](#)
3. [Manual installation](#) for WINDOWS & MAC
4. If you get message when panel run:
'Extension could not be loaded because it was not properly signed'
5. My [e-mail](#) in case of problems with the installation
Please try all methods of installation before you will write me to my e-mail.

1. Installation by Anastasiy's Extension Manager, PLEASE MAKE SURE PHOTOSHOP IS FULLY CLOSED BEFORE INSTALLING.

1. Download manager from the link: <http://install.anastasiy.com/>
2. Setup and run Anastasiy's Extension Manager
3. Go to menu 'File - Install Extension'
net.hussainalbahrani.ShabekProActionsPanel ZXP file in the pop window.



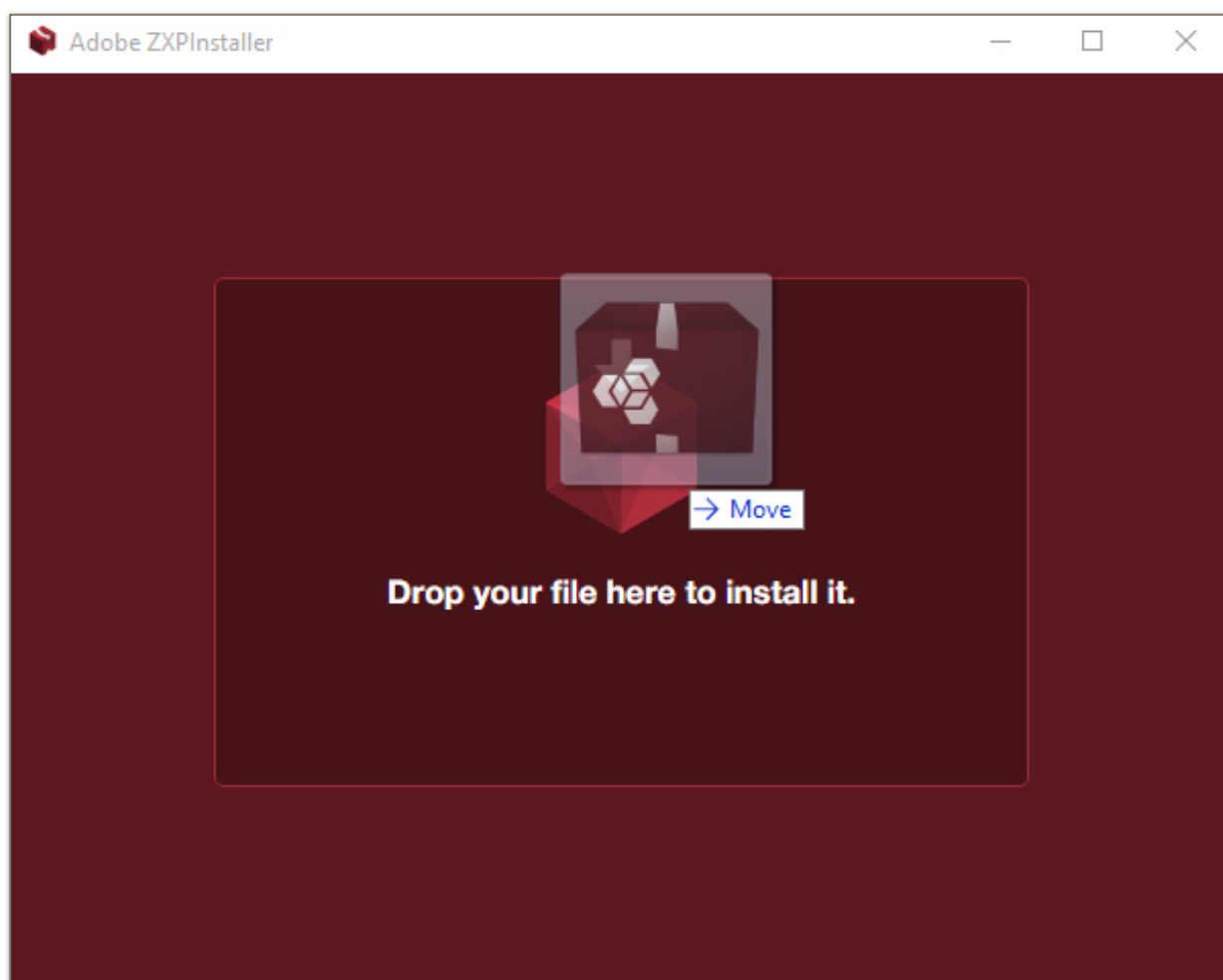
5. Run your Photoshop and go to menu Window => Extension => SPA Panel
6. Please use ZXP Installer if you could not install panel by Anastasiy's Extension Manager

Please use other installation methods if you are unable to install the panel by this method!

2. Installing SPA Panel by ZXP Installer , PLEASE MAKE SURE PHOTOSHOP IS FULLY CLOSED BEFORE INSTALLING.

Link to ZXP Installer: <http://zxpinstaller.com/>

Download, install and start ZXP Installer. Then drag the net.hussainalbahrani.ShabekProActionsPanel ZXP into the installer. It should install automatically



This Method is preferable, its woking for me most of the time, and its easier than the rest.

3. Manual Install

3.1 Manual installation for WIN

There are two directories we can install SPA Panel to. We just need to install it in one of these directories.

Please right-click on the net.hussainalbahrani.ShabekProActionsPanel folder and press copy.

Directory 1: C:\Program Files (x86)\Common Files\Adobe\CEP\extensions

Directory 2: C:\Program Files\Common Files\Adobe\CEP\extensions

3.2 Manual installation for MAC

Directory : /Library/Application Support/Adobe/CEP/extensions/

- Notice: Press shift+command+g then enter if you not see folder 'Library' in Finder

Once you have copied net.hussainalbahrani.ShabekProActionsPanel into one of the extension folders, open Photoshop, and go to the top menu called Window, and then extensions. You will see SPA Panel there.

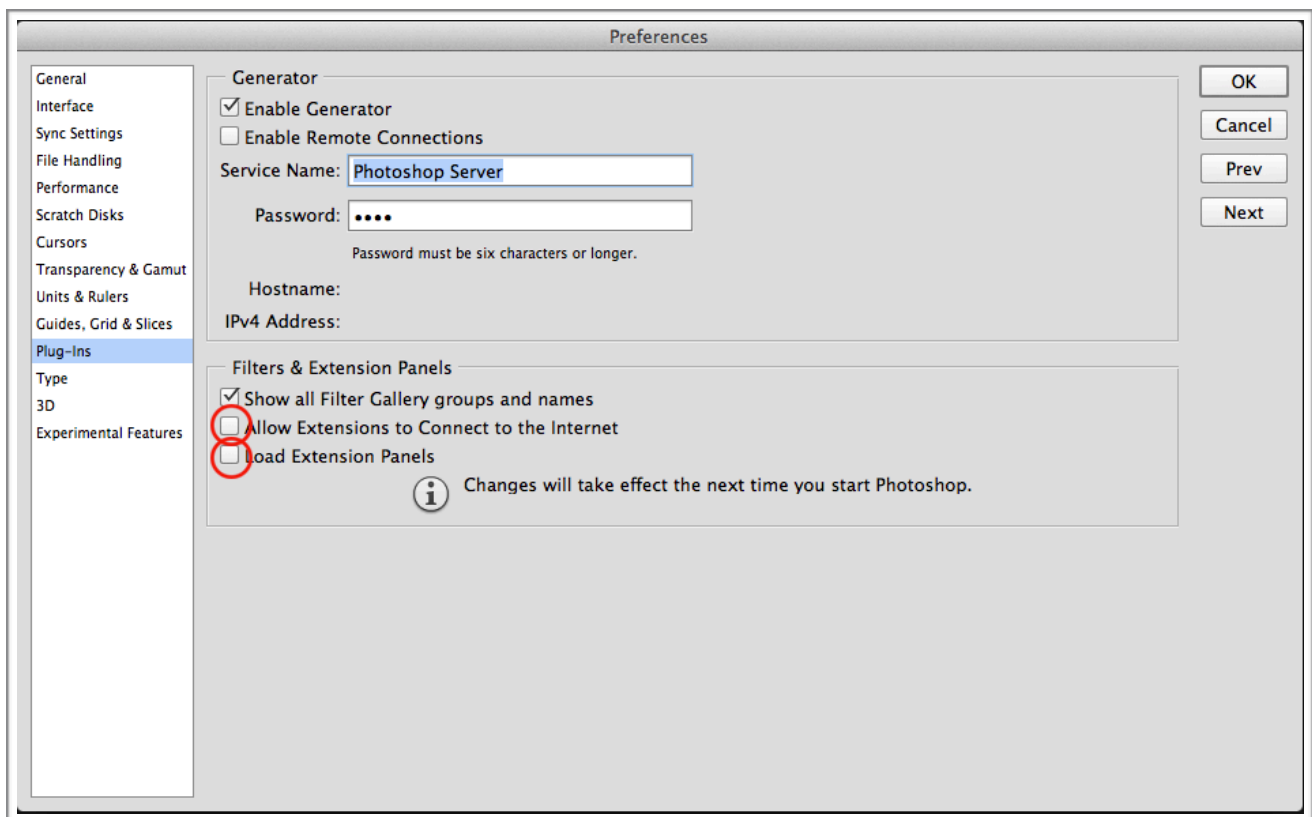
4. If you get message when panel run:

'Extension could not be loaded because it was not properly signed'

WIN: Run the [file](#) or try installing panel another methods

MAC:

Method 1: Try enabling these buttons and make sure **Enable Generator** is active :



Method 2: Open Terminal, type:

```
defaults write com.adobe.CSXS.7 PlayerDebugMode 1
```

Then press return

Please note: Change CSXS.**7** to your application version (see below)

Application	Host ID	CC Version	CC 2014 Version	CC 2015 Version	CC 2015 Dot Version	CC 2017 Version	CC 2018 Version
Photoshop	PHSP/PHXS	14 (CEP 4)	15 (CEP 5)	16 (CEP 6)	17.0.2 (CEP 7)	18 (CEP 7)	19 (CEP 8)

Method 3: Remove panel and try installing panel another method

5. My e-mail in case of problems with the installation

Please sent me message if you have problems to my e-mail:
info.spa.panel@gmail.com

A Big Thanks for the Developer who contributed a lot to make this Panel available
and possible, please follow him here : <https://about.me/eyad1994>