

SharePoint 2010 vs. SharePoint 2013 Feature Comparison

March 2013

SharePoint 2010 vs. 2013

- ▶ From a document collaboration perspective, the structures of both versions are the same – so if you create a metadata architecture for documents in 2010 it should be fully upgradable to 2013.
- ▶ The most significant upgrades in document management are in the user experience – including drag and drop to upload documents and the ability to edit managed metadata in a datasheet view.
- ▶ The primary differences are in the social experiences, especially with discussion boards. The 2013 discussion board (with Community features enabled) creates an engaging “Facebook-like” activity stream, which is far more user-friendly than the same feature in SharePoint 2010. The added visual appeal is important because getting people to use the discussion board instead of commonly used “who you know” networks will take some planning and effort. If the software is engaging and familiar it will help with “stickiness.”
- ▶ The other significant improvement is search, which you will see in the examples on the next few pages.

SharePoint 2010 vs. 2013 Feature Comparison | Representative Examples

Business Scenario	SharePoint 2010	SharePoint 2013
Document Collaboration	<ul style="list-style-type: none"> • Support for enterprise content types and shared metadata so that attributes and structures can be maintained in one place and shared across the enterprise, vastly improving search results. 	<ul style="list-style-type: none"> • No difference in approach for organizing content so investment in defining content types and metadata is fully leveraged in 2013. • Several helpful user experience improvements in the application of metadata, including the ability to edit managed metadata in a datasheet (spreadsheet) view. • “Drag and drop” ability to upload documents to SharePoint libraries (without having to open library in “explorer view”).
Search	<ul style="list-style-type: none"> • Comprehensive enterprise search with the ability to use Boolean operators to create search queries. For example: search for: cats AND dogs. • Wildcard search available. For example, as search for ho* would find homes, horses, houses, etc. • Faceted search refiners to easily narrow results based on metadata. • Define search scopes to target to specific collections of content. • “Best bets” can be defined to force certain results to the top of search results. 	<ul style="list-style-type: none"> • Significant improvements in user experience. • Visual display of contents as you hover in search results. • Best bets now called Promoted Results. • Search remembers what you have previously searched and clicked and displays these values as query suggestions at the top of the results page. • Results show number of times a document has been viewed. • Results pages allows you to page through PowerPoint presentations without leaving the search results page. • One click to “view in library.”

SharePoint 2013 Benefits | Improvements in search start when users type in the query ...



Type-ahead and recent personal searches shown to individual

50-60 of 14,272,948 results

English ▾ Relevance ▾ Advanced RSS

RESULTS YOU'VE CLICKED

- [Environmental Engineering Conference.ppt - portals/itweb/.../archive/Environmental...](#)
- [Conservation and Environmental Research.doc - portals/... /research/Conservation...](#)
- [Environmental Technology Conference - portals/tech/ ... /techready/Environmental...](#)

Visibility in to results you've found before – to help address "I know I've found that document before" issues

Infrared thermal scanning

With computer/tech problems, furniture, facility **thermal** issues power, cabling, 2010/cooling, **thermal** and telephone issues, and lost issues scanning...

[portals/itweb/ ... /archive/B85 Heating Packet.doc](#)

[New Hire Orientation](#) [Getting Set Up](#) [Human Resources](#)

SharePoint 2013 Benefits | ... and the experience is even more productive during results

View how many time this item has been viewed by others

Hover over search results to see content without having to leave the results page.

strategy 

Everything People Videos Reports

Community Documents

Hanley_User_Adoption_Strategies_KMWorld2012 Presentation Presentation by Susan Hanley on User Adoption **Strategies** for KMWorld 2012 in Washington, D.C. ...
essentialsp2013.sharepoint.com/sp2013community/.../AllItems.aspx

[From Vision to Reality: Secrets of User Adoptio...](#)

How many of you are using some type of technology to enable Knowledge Management in your organization ... Can some of you share what types of solutions you are thinking of ...

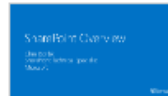
essentialsp2013.sharepoint.com/.../Hanley_User_Adoption_S...



[SharePoint Overview FINAL](#)

THE NEW WAY TO WORK TOGETHER ... With every release we've redefined collaboration and document management and with SharePoint 2013 we've designed a product that represents a new way ...

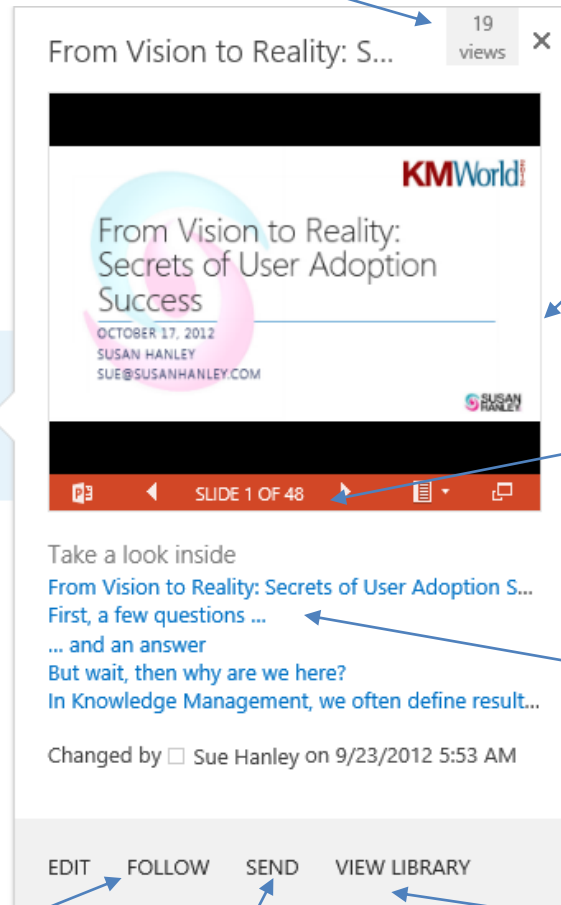
essentialsp2013-my.sharepoint.com/.../SharePoint 2013 Ove...



[SharePoint Server 2013 Preview IT Pro Reviewer's Guide](#)

SharePoint Server 2013 Preview IT Professional Reviewer's Guide © 2012 Microsoft Corporation ... This document is provided "as-is." Information and views expressed in this document ...

essentialsp2013-my.sharepoint.com/.../SharePoint Server 2013 Previe...



19 views

From Vision to Reality: S...

From Vision to Reality: Secrets of User Adoption Success

OCTOBER 17, 2012
SUSAN HANLEY
SUE@SUSANHANLEY.COM

SLIDE 1 OF 48

Take a look inside
From Vision to Reality: Secrets of User Adoption S...
First, a few questions ...
... and an answer
But wait, then why are we here?
In Knowledge Management, we often define result...

Changed by Sue Hanley on 9/23/2012 5:53 AM

EDIT FOLLOW SEND VIEW LIBRARY

Step through results and content without leaving the search page to be sure this is the right document.

Open directly to the page by clicking from "Take a look inside"

Want to find out where the document came from? One click to the library.

To get notified about updates to the document, click to Follow from search results

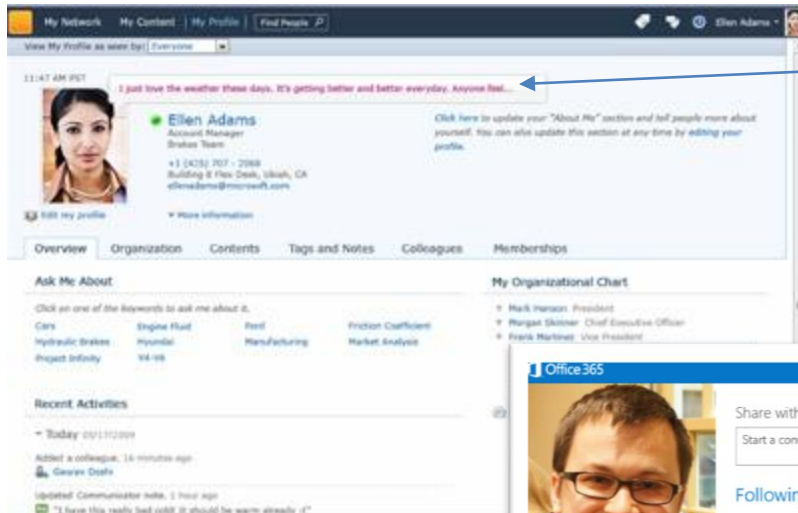
Send a **link** to the document to someone else right from search results.

SharePoint 2010 vs. 2013 Feature Comparison | Representative Examples

Business Scenario	SharePoint 2010	SharePoint 2013
Expertise Location	<ul style="list-style-type: none"> • Support for user profile – both standard and custom attributes • People are searchable – and search can be scoped to people • Users define core areas of expertise in the “Ask me about” column. 	<ul style="list-style-type: none"> • Default people search displays most recent documents authored by that user • Follow people to see updates based on their Newsfeed posts and what they are publishing
Social Computing	<ul style="list-style-type: none"> • Very limited capabilities. • Users can post a single status that is not retained and not searchable. • New status wipes out the old status so statuses feel very static. 	<ul style="list-style-type: none"> • Each user has a Newsfeed that is similar to a Facebook activity stream. • See stream of the entire organization or filter based on topics and people you are Following. • Post or reply in the stream using @mentions and #hashtags. • Activity posts are saved for as long as you decide to retain them (most organizations align this policy with email retention) and are searchable. • Follow #Hashtags to get notified when new content relevant to your area of interest is added. • @mention someone to direct an activity post to their attention (as in Twitter).

Social Computing Examples | 2010 vs. 2013

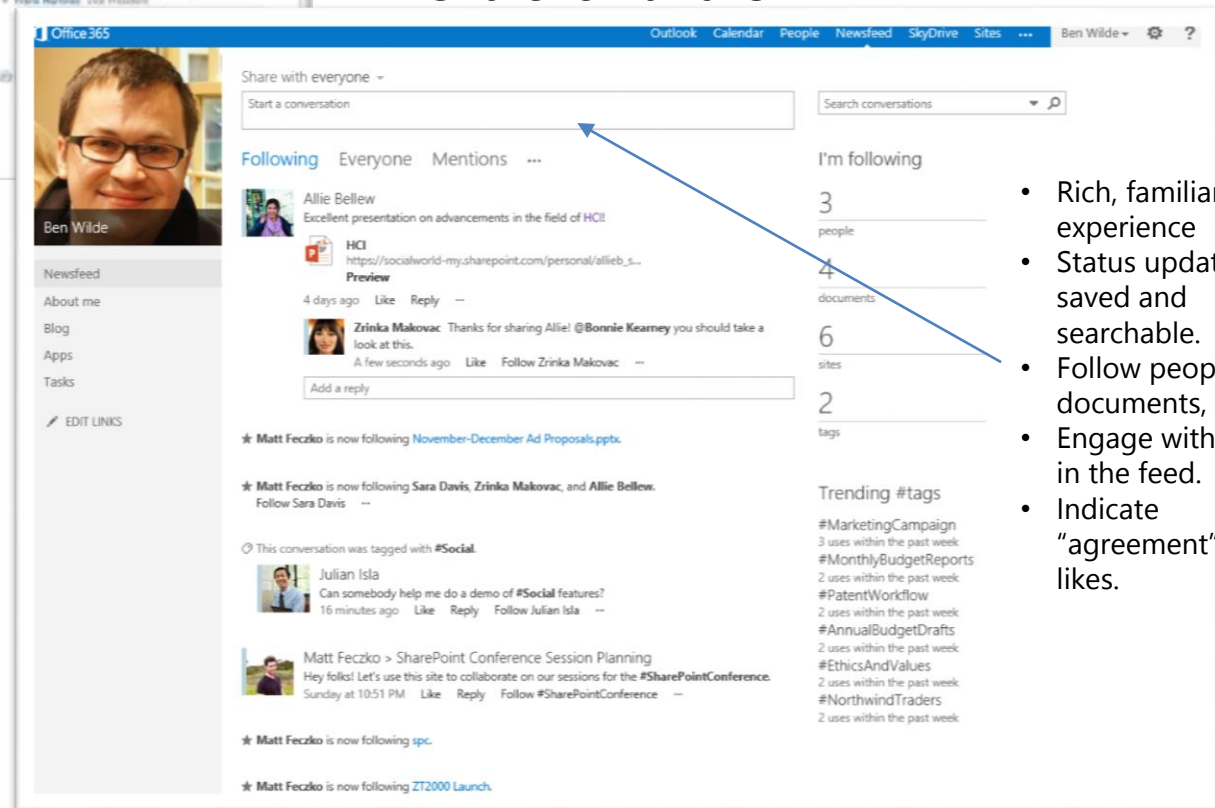
SharePoint 2010



Users can update a personal status. People who view the profile page can leave a note.

Some activities surfaced in a "Recent activities" feed.

SharePoint 2013



- Rich, familiar social experience
- Status updates saved and searchable.
- Follow people, documents, topics.
- Engage with others in the feed.
- Indicate "agreement" with likes.

SharePoint 2010 vs. 2013 Feature Comparison | Representative Examples

Business Scenario	SharePoint 2010	SharePoint 2013
Communities of Practice	<ul style="list-style-type: none"> • Must configure an “out of the box” template to align with community objectives. • Community site is just an instance of a standard team site – with similar requirements for managing access and assigning privileges. • Simplistic discussion list. 	<ul style="list-style-type: none"> • New “Community” site template completely focused on conversations. • Access very different from team sites – users can observe conversations and then “join” a community when they want to post. • Community can allow anyone to join or can require approval by a Moderator before allowing someone to become a “Member.” • Becoming a member means you are automatically “Following” the community site. • Member photos show up next to all posts. • “Gamification” options to encourage participation – points, badges, and a “top contributors” leaderboard. • Designated users can be “gifted” a badge – to identify someone as an “Expert” or “Thought Leader” so that discussion participants can easily distinguish contributions. • Ability to categorize conversations by topic with an image – to create a welcoming environment and encourage interaction.
Workflow	<ul style="list-style-type: none"> • Several “built in” workflows with additional options available in SharePoint Designer. 	<ul style="list-style-type: none"> • Significant enhancements, including new ways to create and visualize workflows. • Existing 2010 workflows should upgrade.

SharePoint 2013 | Communities Site template – visual categories to organize content, see list of Members

The screenshot displays a SharePoint 2013 Communities Site template. The top navigation bar includes Office 365, Outlook, Calendar, People, Newsfeed, SkyDrive, and Sites. The main navigation area features Home, Communities, Departments, Employee, Facilities, News, and Resources. The site title is "Categories" and the subtitle is "Pick a category and get into the conversation." The left sidebar contains Home, Categories, Members, About, and Site Contents. The main content area shows a grid of categories: Analysis, General, Planning, Research, Sales, and Training. A "Roll-over" message is shown over the Planning category, indicating 4 discussions and 10 replies. The right sidebar displays "What's happening" with 10 members, 10 discussions, and 18 replies, and "Top contributors" including Bonnie Kearney, Sara Davis, Alex Darrow, and Janet Schorr. A "Members" panel is open on the right, showing a list of top contributors with their profiles, activity counts, and join dates.

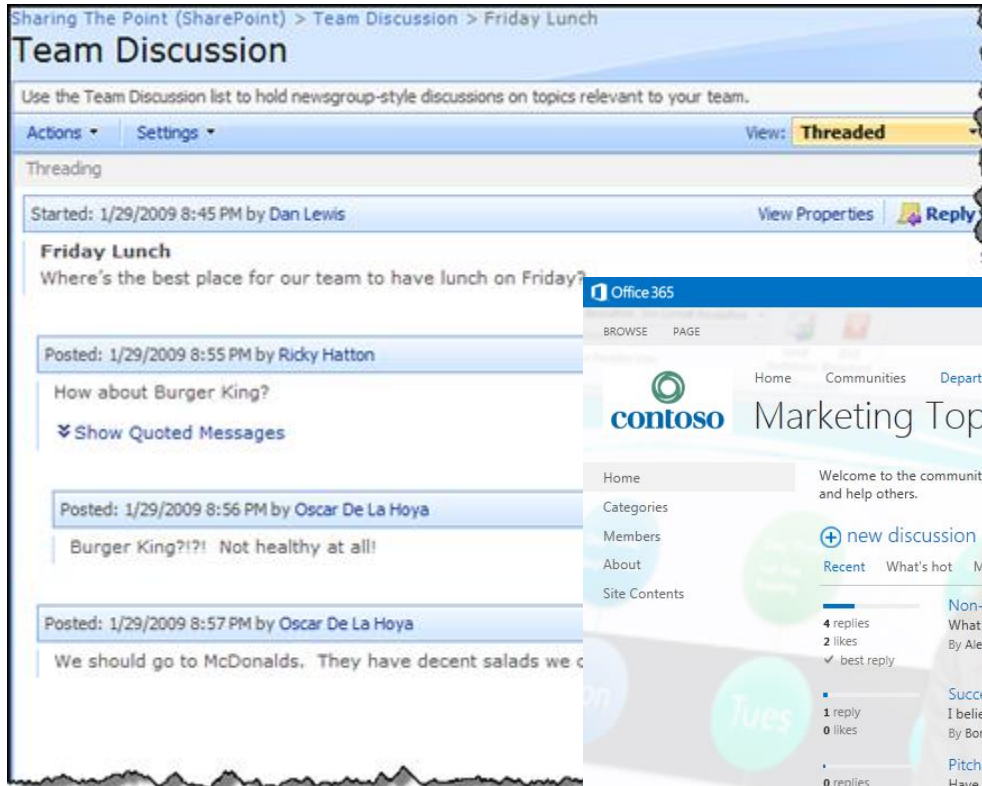
“Roll-over” message shows activity by category

Member	Discussions	Replies	Best Replies	Joined
Bonnie Kearney	5	9	0	November 06
Sara Davis	2	4	0	November 08
Alex Darrow	4	1	0	November 08
Janet Schorr	1	3	0	November 10
[Name obscured]	2	1	0	November 10

Out of the Box Discussion List

SharePoint 2010 vs. SharePoint 2013

SharePoint 2010



Sharing The Point (SharePoint) > Team Discussion > Friday Lunch

Team Discussion

Use the Team Discussion list to hold newsgroup-style discussions on topics relevant to your team.

Actions ▾ Settings ▾ View: **Threaded**

Threading

Started: 1/29/2009 8:45 PM by Dan Lewis [View Properties](#) [Reply](#)

Friday Lunch

Where's the best place for our team to have lunch on Friday?

Posted: 1/29/2009 8:55 PM by Ricky Hatton

How about Burger King?

Show Quoted Messages

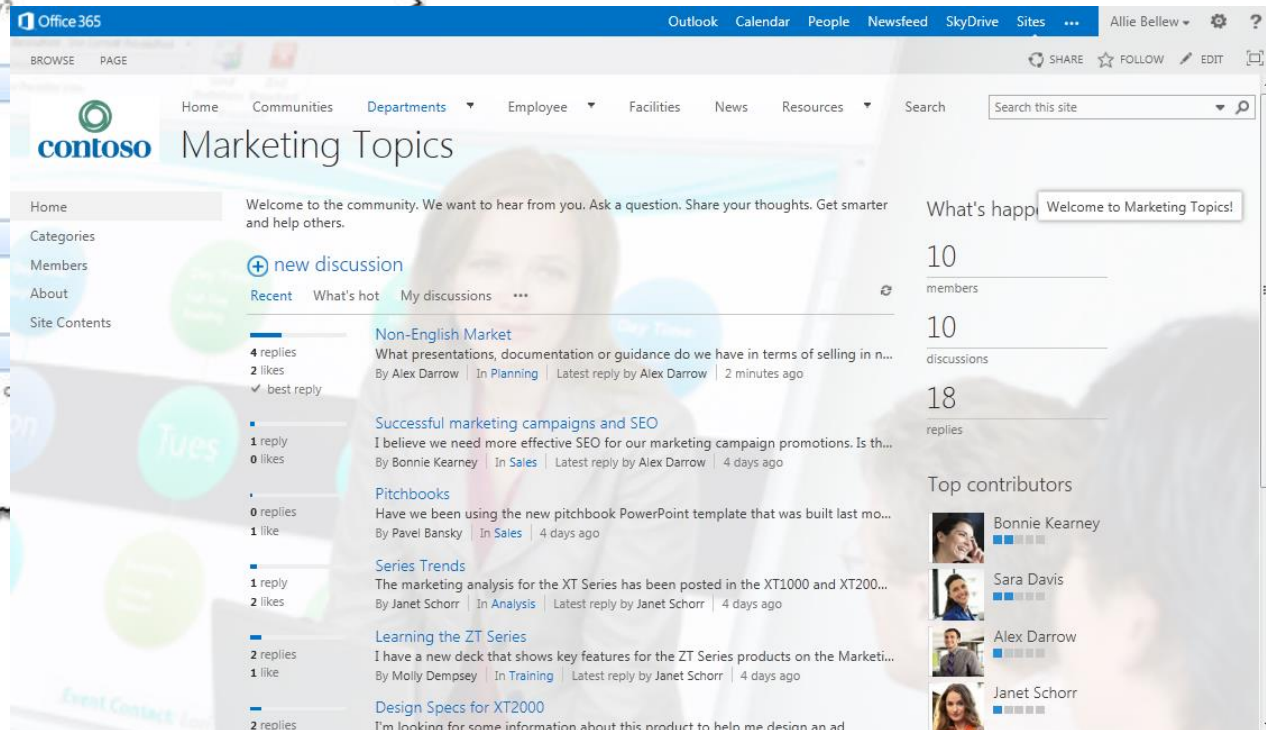
Posted: 1/29/2009 8:56 PM by Oscar De La Hoya

Burger King?!?! Not healthy at all!

Posted: 1/29/2009 8:57 PM by Oscar De La Hoya

We should go to McDonalds. They have decent salads we c

SharePoint 2013



Office 365 Outlook Calendar People Newsfeed SkyDrive Sites ... Allie Bellew ▾ ⚙ ?

BROWSE PAGE

Home Communities Departments Employee Facilities News Resources Search

contoso Marketing Topics

Home Welcome to the community. We want to hear from you. Ask a question. Share your thoughts. Get smarter and help others.

Categories

Members

About

Site Contents

+ new discussion

Recent What's hot My discussions ...

- 4 replies 2 likes ✓ best reply
Non-English Market
What presentations, documentation or guidance do we have in terms of selling in n...
By Alex Darrow | In Planning | Latest reply by Alex Darrow | 2 minutes ago
- 1 reply 0 likes
Successful marketing campaigns and SEO
I believe we need more effective SEO for our marketing campaign promotions. Is th...
By Bonnie Kearney | In Sales | Latest reply by Alex Darrow | 4 days ago
- 0 replies 1 like
Pitchbooks
Have we been using the new pitchbook PowerPoint template that was built last mo...
By Pavel Banský | In Sales | 4 days ago
- 1 reply 2 likes
Series Trends
The marketing analysis for the XT Series has been posted in the XT1000 and XT200...
By Janet Schorr | In Analysis | Latest reply by Janet Schorr | 4 days ago
- 2 replies 1 like
Learning the ZT Series
I have a new deck that shows key features for the ZT Series products on the Marketi...
By Molly Dempsey | In Training | Latest reply by Janet Schorr | 4 days ago
- 2 replies
Design Specs for XT2000
I'm looking for some information about this product to help me design an ad

What's happenin' Welcome to Marketing Topics!

10 members

10 discussions

18 replies

Top contributors

- Bonnie Kearney
- Sara Davis
- Alex Darrow
- Janet Schorr

SharePoint 2010 vs. 2013 Feature Comparison | Representative Examples

Business Scenario	SharePoint 2010	SharePoint 2013
Collaborating with others outside the workgroup on individual documents	<ul style="list-style-type: none">• Difficult to do if the person not on the team does not have access to edit the document on the team site.• Only the site owner can grant permissions.• Author can create a "document workspace" and invite the guest to edit, but then has to publish the final document back to the main site.	<ul style="list-style-type: none">• "Share" button easily visible for any site and document.• Any user can invite someone to edit an individual document "in place," but all invitations are approved by the site owner. (easier to collaborate, but still controlled) This feature makes it easier to collaborate with people outside the immediate workgroup but requires that site owners carefully manage permissions when the collaboration is finished.• Users who request access to a site have an opportunity to explain why they need access so that site owners can make better decisions about whether or not to grant access.

SharePoint 2010 vs. 2013 Feature Comparison | Representative Examples

Business Scenario	SharePoint 2010	SharePoint 2013
Mobile Access	<ul style="list-style-type: none"> Teams can create mobile views for sites but not necessarily for different types of mobile devices.. 	<ul style="list-style-type: none"> Optimized mobile browser experience - provides a lightweight, contemporary view browsing experience for users to navigate and access document libraries, lists, wikis, and Web Parts. Device channels - you can render a single published SharePoint site in multiple designs to accommodate different device types. Business intelligence - SharePoint Server 2013 enables a user to view certain kinds of dashboard content. This includes PerformancePoint reports and scorecards, and Excel Services reports in iOS 5.0 Safari browsers on iPad devices. Office Web Apps - allows users to view Word, Excel, and PowerPoint documents in mobile browsers.
Branding (creating a custom look and feel)	<ul style="list-style-type: none"> Significant SharePoint knowledge required to design the user interface for SharePoint sites. 	<ul style="list-style-type: none"> The new features in a publishing site minimize the amount of SharePoint knowledge that is required to successfully design and brand a SharePoint site. Professional web designers who know HTML, CSS, and JavaScript already have the skills necessary to design a SharePoint 2013 site – and can use their preferred tools such as Dreamweaver to create designs for SharePoint.