

EOS
DIGITAL

Canon
Delighting You Always

SURPASS
3 WAY SHOOTING
enhanced by Dual Pixel CMOS AF

EOS 70D



CAPTURE the
EXTRAORDINARY with

3WAY SHOOTING



EOS 70D

Every new day presents a variety of unique moments waiting to be captured, and with 3-way shooting the possibilities are endless. Canon presents the new EOS 70D, a perfect balance of optical performance and imaging efficiency, creative intelligence and expressive emotion.

The EOS 70D is pure consistency in photographic quality with its 20.2-megapixel APS-C sized CMOS sensor, DIGIC 5+ image processor and even more advanced features. For versatile everyday shooting with brilliant image quality, the extraordinary EOS 70D is your calling to surpass conventional shooting, and seek the fantastic in the everyday.

Dual Pixel AF
CMOS

20.2 MEGA
PIXELS
CMOS

DIGIC
5+

ISO
12800
6400

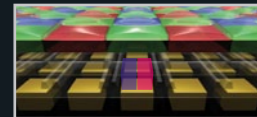
70
Frames
Per Sec

WiFi
CERTIFIED

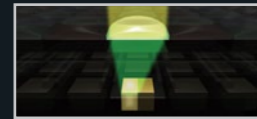


PROPRIETARY DUAL PIXEL CMOS AF

A leader in advancing imaging technology, Canon introduces its new Dual Pixel CMOS AF system, which is a phase-difference AF technology on the image sensor plane. The latest Dual Pixel CMOS AF system boasts superior high-speed AF capabilities even when shooting in Live View mode.



Each individual pixel consists of two separate photodiodes



Each photodiode detects a separate light signal during AF



This creates a phase-difference detection AF structure to drive the lens

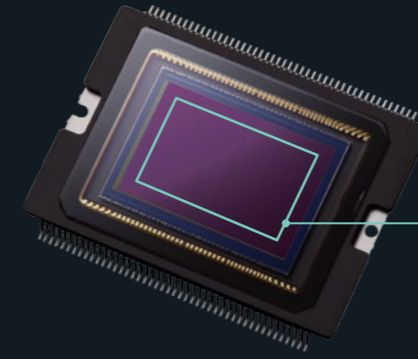


The amount of lens drive is measured from the amount of signal difference (amount of shift) in the AF points.



The signals of both photodiodes are in agreement and focus is achieved on the first try without hesitation.

The same principle as phase-difference detection AF



Dual Pixel CMOS AF applicable area

This groundbreaking technology employs phase-difference detection AF even during final focusing, thus resulting in hunting-free focusing over a wide AF area (80% vertical x 80% horizontal).

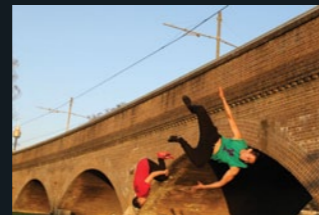
Each individual pixel holds two photodiodes, where signals from each photodiode are detected, and the amount of difference between the signals determines the amount of lens drive to achieve sharp focus.

Dual Pixel CMOS AF switches the drive method according to the lens in use and shooting conditions. There are currently about 103 EF lenses that support Dual Pixel CMOS AF on the EOS 70D.



FAST & ACCURATE FOCUSING OVER WIDE AF AREA IN LIVE VIEW SHOOTING

Live View shooting expands shooting possibilities on the EOS 70D with quick and accurate AF performance over a wider area. The Vari-Angle LCD monitor with touch panel allows you to explore various creative shooting angles and framing options. Selection of AF point also becomes intuitive with the touch shutter function, and continuous AF further improves tracking of moving subjects.



EXCEPTIONAL TRACKING & SILENT AF IN MOVIE SERVO AF WITH STM LENS

Dual Pixel CMOS AF technology further improves focusing operation for smoother AF performance during Live View shooting in Movie Servo AF when recording videos. Paired with STM lenses, high-speed focusing is achieved, even when shooting moving subjects. STM lenses also deliver even smoother and silent AF that is perfect for shooting movies, especially in quiet environments.

01 LIVE VIEW SHOOTING



VARI-ANGLE 3.0-INCH CLEAR VIEW LCD II WITH TOUCH PANEL

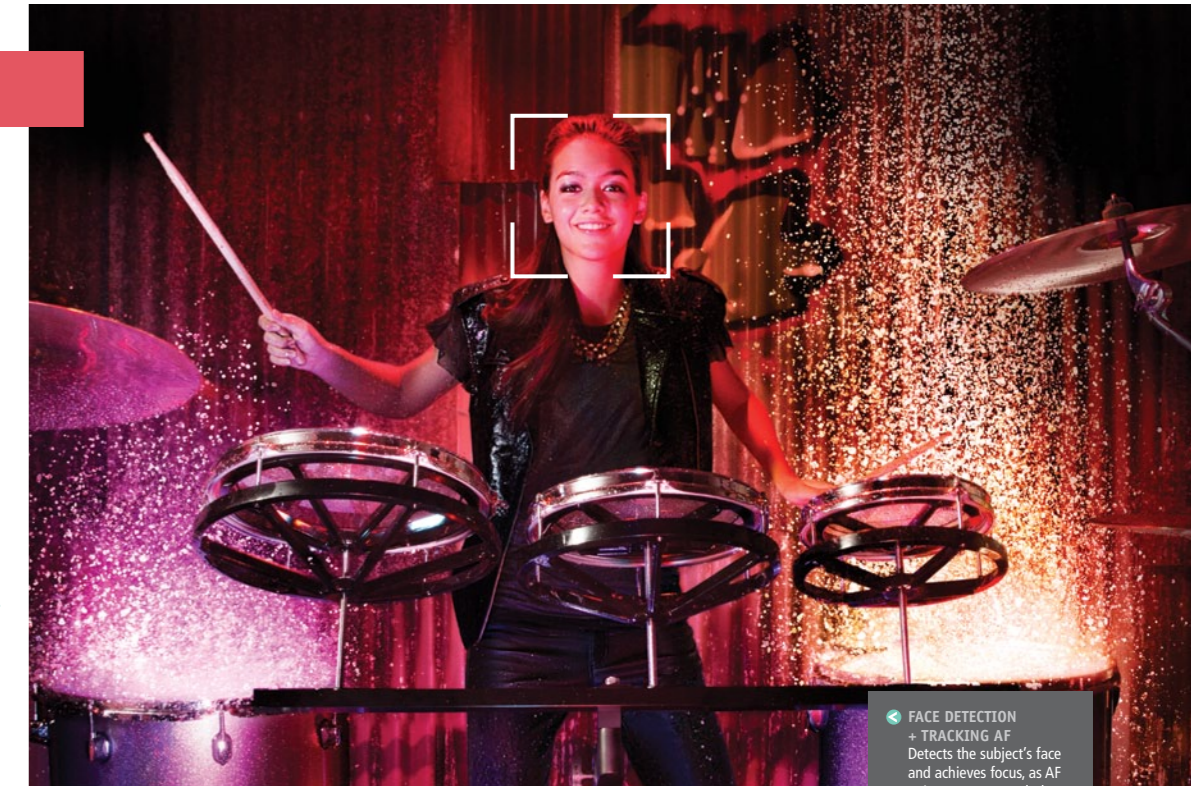
Never miss out on the tiniest details with the EOS 70D's 3.0-inch Clear View LCD II monitor fortified by an approximately 1.04 million dot-resolution, viewing angle of 160° and faithful color reproduction.

Explore various perspectives and shoot at low or high angles by simply twisting and tilting the Vari-Angle LCD monitor. The monitor's side opening makes it easy to shoot even on a tripod, with a battery grip attached or in vertical position. The built-in Touch Panel further makes Live View shooting intuitive with simple touch operations such as swiping, pinching to zoom, and touch to capture.



SMOOTH & ACCURATE AF WITH STM TECHNOLOGY

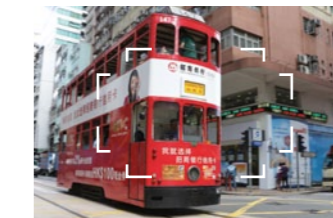
The Stepping Motor (STM) lenses work extremely well with the latest Dual Pixel CMOS AF technology on the EOS 70D's sensor. In Live View mode, experience incredibly fast and accurate AF during still photography. When paired with the camera's Movie Servo AF for movie recording, the STM lenses deliver outstandingly smooth and silent continuous AF for that perfect video capture.



FACE DETECTION + TRACKING AF
Detects the subject's face and achieves focus, as AF points move to track the face. Touch the subject on the LCD monitor to set an AF point for tracking.

COMPOSE, FOCUS & CAPTURE IN LIVE VIEW

Shooting in Live View is easy with the touch panel ability on the EOS 70D's LCD monitor. Tap on a subject to set an AF point and touch to release shutter. Continuous AF can also be employed to steadily track and focus on a moving subject until the shutter is released. There are four AF methods in Live View shooting to match shooting subjects and environment.



FLEXIZONE—MULTI AF
Divides the scene into a number of zones according to aspect ratio with priority given to the center or closest subject for focusing.



FLEXIZONE—SINGLE AF
Focuses on the subject using one AF point, which can then be moved by touching the LCD monitor.



QUICK MODE
An automatic selection of AF points or manually select an AF point to focus on the subject. Touch on the LCD monitor to move the AF point.

02 :

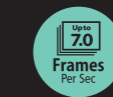


OPTICAL VIEWFINDER SHOOTING



INTELLIGENT VIEWFINDER

Compose and capture with crystal clarity on the EOS 70D's intelligent optical viewfinder, which offers 98% coverage, 27.9° angle of view and 0.95x magnification. Information such as AF point selection mode, grid display, electronic level, AF display and various shooting alerts are shown clearly and can be checked with a quick glance.

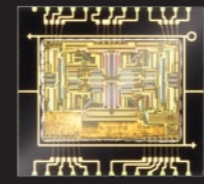


7FPS HIGH-SPEED CONTINUOUS SHOOTING

Shoot fast-moving subjects and non-stop actions fearlessly with a high-speed continuous shooting speed of 7fps. Made possible by an 8-channel readout from its CMOS sensor and a two-motor system, the EOS 70D ensures that you never miss a decisive shot.

Besides capturing action sequences, you can also choose the best from a single burst of multiple shots. The EOS 70D shoots continuously at a maximum burst of approximately 40 shots for Large/Fine JPEG (65 in UHS-I SD Card) and 15 shots for RAW images (16 in UHS-I SD Card).

19-POINT ALL CROSS-TYPE AF SENSOR WITH CENTER DUAL CROSS-TYPE AF POINT



Super stable and high-speed autofocusing on the EOS 70D is assured by its 19-Point All Cross-Type AF sensor performing cross-type focusing at a maximum aperture of f/5.6. The center AF point is both horizontal-line and vertical-line sensitive for high-precision focusing at f/2.8, thus enabling minute focus detection.

The 19 AF points are spread over a wide area for accurate tracking of moving subjects and easy shooting in horizontal or vertical positions. An improved algorithm ensures a more stable and precise AI Servo AF II performance with adjustable parameters of tracking sensitivity and acceleration/deceleration tracking.

LANDSCAPE



PORTRAIT



03:

REMOTE LIVE VIEW

SHOOTING



EASY REMOTE SHOOTING WITH EOS REMOTE APP

Extend your EOS 70D's shooting capability with the EOS Remote app, which allows remote control of the camera. You will be able to browse, rate, or delete images in the camera, and transfer JPEG images from the camera to your smartphone or tablet PC.



The EOS Remote app also makes it possible to shoot from a distance away using your smartphone or tablet PC to act as the camera's Live View display. Just set up your EOS 70D in a desired spot and you can focus, compose, adjust settings, and remotely release the shutter all without being at the camera.

EOS REMOTE APP is available on:  



**WiFi function subject to availability in your region*



Shoot & Share the Best of Life

Those picture-perfect moments are made for sharing, and the EOS 70D makes it easy for you to share your images. You can simply transfer JPEG images and compatible movie files between two Canon cameras via built-in wireless LAN, and also resize JPEG images captured with the EOS 70D before transferring.



Ease of Use with EOS Utility

The bundled EOS Utility software comes with functions that improve your workflow and extend shooting capabilities. Remote Live View capture is a function where the EOS 70D is controlled remotely on a computer via a wireless LAN connection. You will be able to adjust camera settings, compose and check focus in real-time, and remotely release the shutter.



Cable-Free Convenience

A cable-free and fuss-free advantage, the EOS 70D is enabled for printing images from a compatible Wi-Fi printer* that supports PictBridge (DPS over IP) without the need for a computer. This wireless advantage also extends to playback and viewing of JPEG images on DLNA-certified media players such as televisions.

**The printer would need to be in either infrastructure mode or camera access point mode*

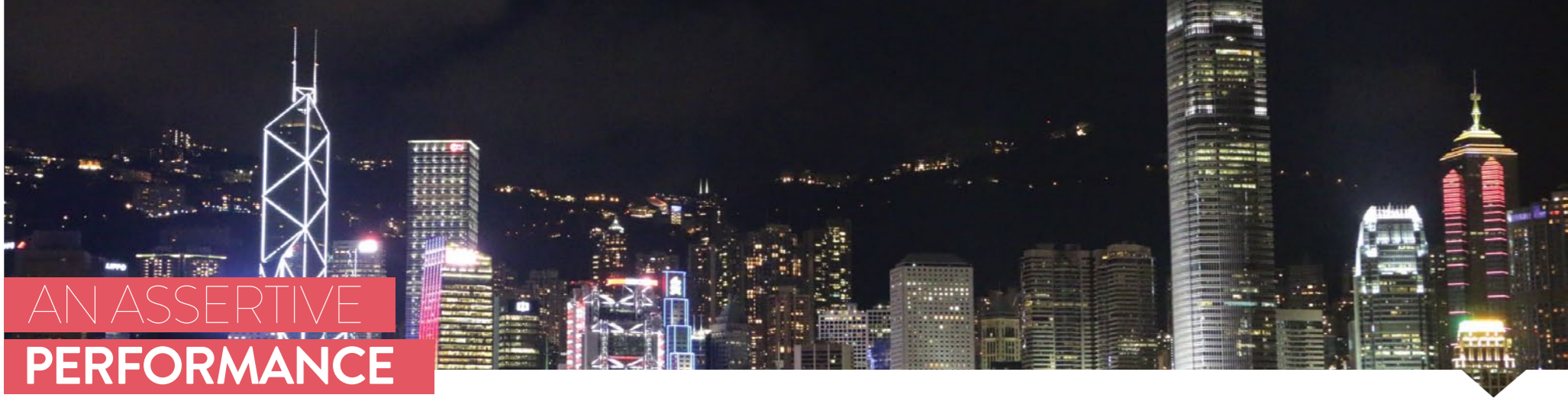


Social Networking Features

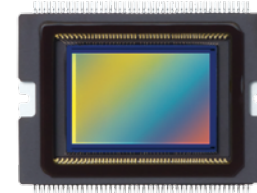
Go beyond image-sharing between cameras and use your EOS 70D to upload JPEG images and videos to an album on CANON iMAGE GATEWAY (CiG)*. Through CiG, you can also upload images and movies or post your CiG album link to social networking sites such as Facebook, YouTube, Flickr and Twitter.

**Subject to availability in your region*





AN ASSERTIVE PERFORMANCE



20.2-MEGA PIXEL CMOS SENSOR FOR IMAGING PROWESS

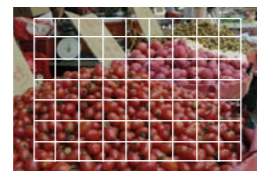
Newly developed for the EOS 70D, its 20.2-megapixel APS-C sized CMOS sensor features wide-ranging ISO speeds, expanded dynamic range, greater noise reduction levels, and compatibility with Dual Pixel CMOS AF technology. Images and videos are delivered with minimal noise, natural tonal gradation, and vivid colors even at high ISO levels.

DIGIC 5+ IMAGE PROCESSOR TO POWER YOUR VISION

The DIGIC 5+ image processor is the force behind the EOS 70D's responsive shooting and imaging aptitude, while working together with the CMOS sensor. It drives advanced features such as a wide ISO range of ISO 100-ISO 12800, high-speed continuous shooting of 7fps, Multiple Exposure mode and High Dynamic Range mode.

SOPHISTICATED iFCL 63-ZONE DUAL-LAYER METERING SYSTEM

The Intelligent Focus Color Luminance (iFCL) 63-Zone Dual-Layer Metering System is geared for all 19 AF points on the AF sensor. Metering area is divided into 63 zones for even and balanced exposure. To prevent underexposure when shooting saturated red subjects, the dual-layer sensor measures light at separate red-green wavelengths and blue-green wavelengths.



WITHOUT COLOR INFORMATION

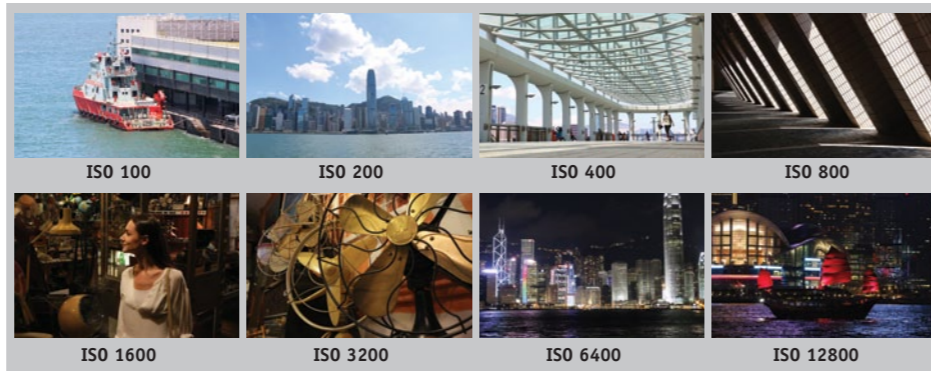


WITH COLOR INFORMATION

ISO 100-12800 RANGE CAPTURES EXPRESSIVE DETAILS

- ISO 6400 -

Day and night, still or moving subjects, artificial or natural light - capture your vision without loss of detail. The EOS 70D capably handles any shooting situation with its standard sensitivity of ISO 100-12800, expandable to 25600. In ISO Auto for movie-shooting, a range of ISO 100-6400 is sufficient and can be manually extended to 12800.



SEE DIFFERENTLY WITH MULTI-ASPECT SHOOTING

You need not crop images in post-processing by simply using the Multi-Aspect Shooting function. On the EOS 70D using either the viewfinder or Live View, shoot in ratios of 4:3, 1:1, 16:9 or 3:2. Multi-aspect ratios can help to emphasize a particular subject or better suit the composition of the scene, for an example, using a ratio of 16:9 for landscapes.



A MOVIE-SHOOTING MASTERMIND



SHOOTING WITH EOS MOVIE

Record everyday moments on your EOS 70D in Full HD Video at 1920 x 1080, and with minimal moiré effect even at high ISO levels. You are even able to magnify the image from 3x up to 10x using Movie Digital Zoom.

Dual Pixel CMOS AF drives AF performance to achieve smooth tracking and continuous AF when shooting with Movie Servo AF. Paired with an STM lens, movie-shooting is truly silent and smooth with quick AF, even while tracking moving subjects.



EXCITING STORIES WITH VIDEO SNAPSHOT

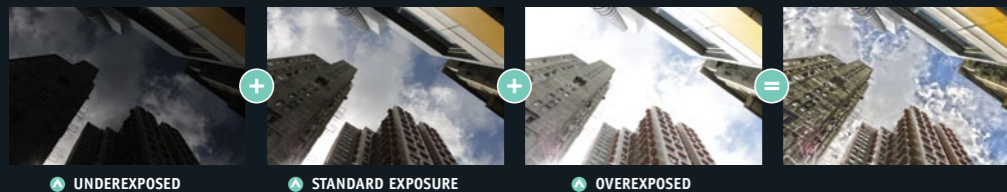
For dynamic movie direction, put together a compilation of short videos using the Video Snapshot feature. Begin by shooting a video clip of 2, 4 or 8 seconds duration, and save these clips as a single Video Snapshot Album. Video clips can be edited using Video Snapshot Task and after editing, enjoy your movie creation in playback with background music for a complete movie vibe.



CREATIVITY IN ACTION

HDR TRUE TO VISION HDR MODE

In High Dynamic Range mode, three shots are captured at three different exposures. Then these images are merged in-camera for a vivid and finely detailed image result.



UNDEREXPOSED STANDARD EXPOSURE OVEREXPOSED

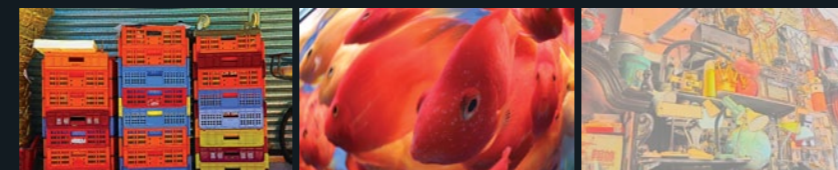
ARTISTIC FLAIR WITH MULTIPLE EXPOSURE MODE

Use Multiple Exposure mode to create a single multiple-exposure image by combining between two to nine images, in either setting of Additive or Average, for a surreal effect on your images.

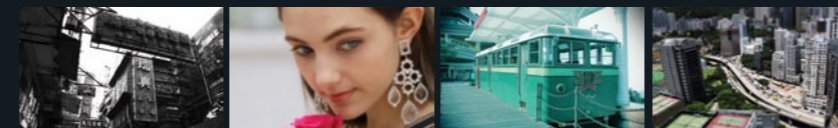


CREATIVE FILTERS – TOY CAMERA –

Creative Filters can impart greater depth to your images and better express your creativity. The effects can be previewed real-time during Live View shooting before final capture.



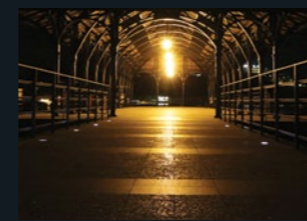
ART BOLD FISH-EYE WATER PAINTING



GRAINY B/W SOFT FOCUS TOY CAMERA MINIATURE

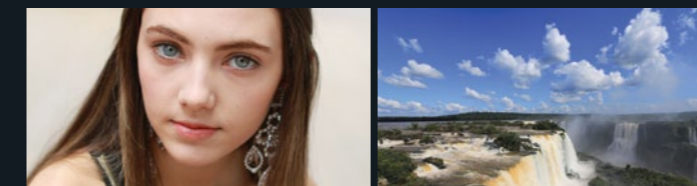
MULTI SHOT NOISE REDUCTION

Multi Shot Noise Reduction captures four shots in succession at a fast shutter speed and combines them in-camera. The final image displays reduced noise, sharper details, and balanced brightness.

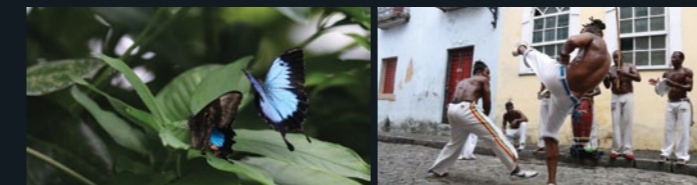


SPECIAL SCENE MODE (SCN)

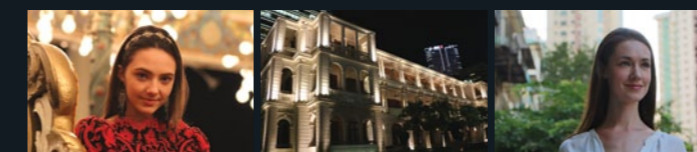
Shoot from day to night, anywhere and everywhere with the super feature Special Scene Mode (SCN) that allows you to select from seven options to best match your shooting scene or subject.



PORTRAIT LANDSCAPE



CLOSE-UP SPORTS



NIGHT PORTRAIT HANDHELD NIGHT SCENE HDR BACKLIGHT CONTROL

For a beautifully lit portrait against a night backdrop For sharp images shot in low-light environments For capturing details in both highlight and shadowed areas

EXPANDING PHOTOGRAPHIC EXPRESSION



EF-S18-55mm f/3.5-5.6 IS STM

The new EF-S18-55mm f/3.5-5.6 IS STM offers high magnification in a compact and lightweight standard zoom lens build with an Optical Image Stabilizer correcting shake for up to an equivalent of 3.5* stops. Its Stepping Motor (STM) mechanism delivers faster, smoother and quieter AF performance in both photo and video capture.



EF-S18-135mm f/3.5-5.6 IS STM

With its lightweight size and versatile focal length, the EF-S18-135mm f/3.5-5.6 IS STM will become a firm favorite in your kit bag. This lens sports a high-precision UD lens element and a PMO aspheric lens element for reduced chromatic aberration. An improved Image Stabilization system corrects shake for up to an equivalent of 4 stops, and is capable of a minimum focusing distance of 0.39 meters through its zoom range.



EF-S18-200mm f/3.5-5.6 IS

This versatile standard zoom lens features a wide focal length range and an Image Stabilizer for up to 4 stops-equivalent of shake correction. The all-rounder EF-S18-200mm f/3.5-5.6 IS kit lens has two aspheric lens elements and two UD lens elements to correct chromatic aberration, resulting in high quality images with superb sharpness.



EF-S55-250mm f/4-5.6 IS STM **NEW**

The latest EF-S55-250mm f/4-5.6 IS STM is a lightweight and compact zoom lens which offers excellent image quality, usability and affordability. It employs a Stepping Motor (STM) mechanism for quick and silent auto-focusing in still photography, and quiet, smooth AF when recording with Movie Servo AF. Its Image Stabilization system corrects shake for up to an equivalent of 3.5* stops.

*Based on CIPA standards



SPEEDLITE 320EX

For creative lighting options, the Speedlite 320EX is the ideal flash unit as a wireless slave unit positioned off-camera, and used with the EOS 70D's built-in Speedlite transmitter. An LED light on the front acts as a video light when shooting movies, a modeling light or AF assist beam during Live View shooting.

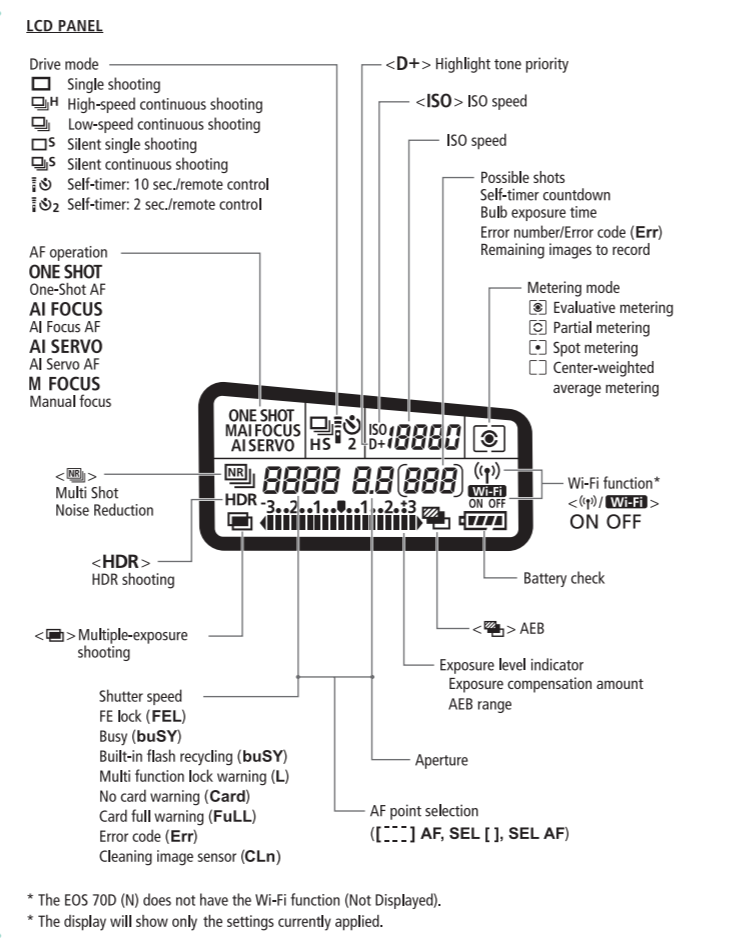
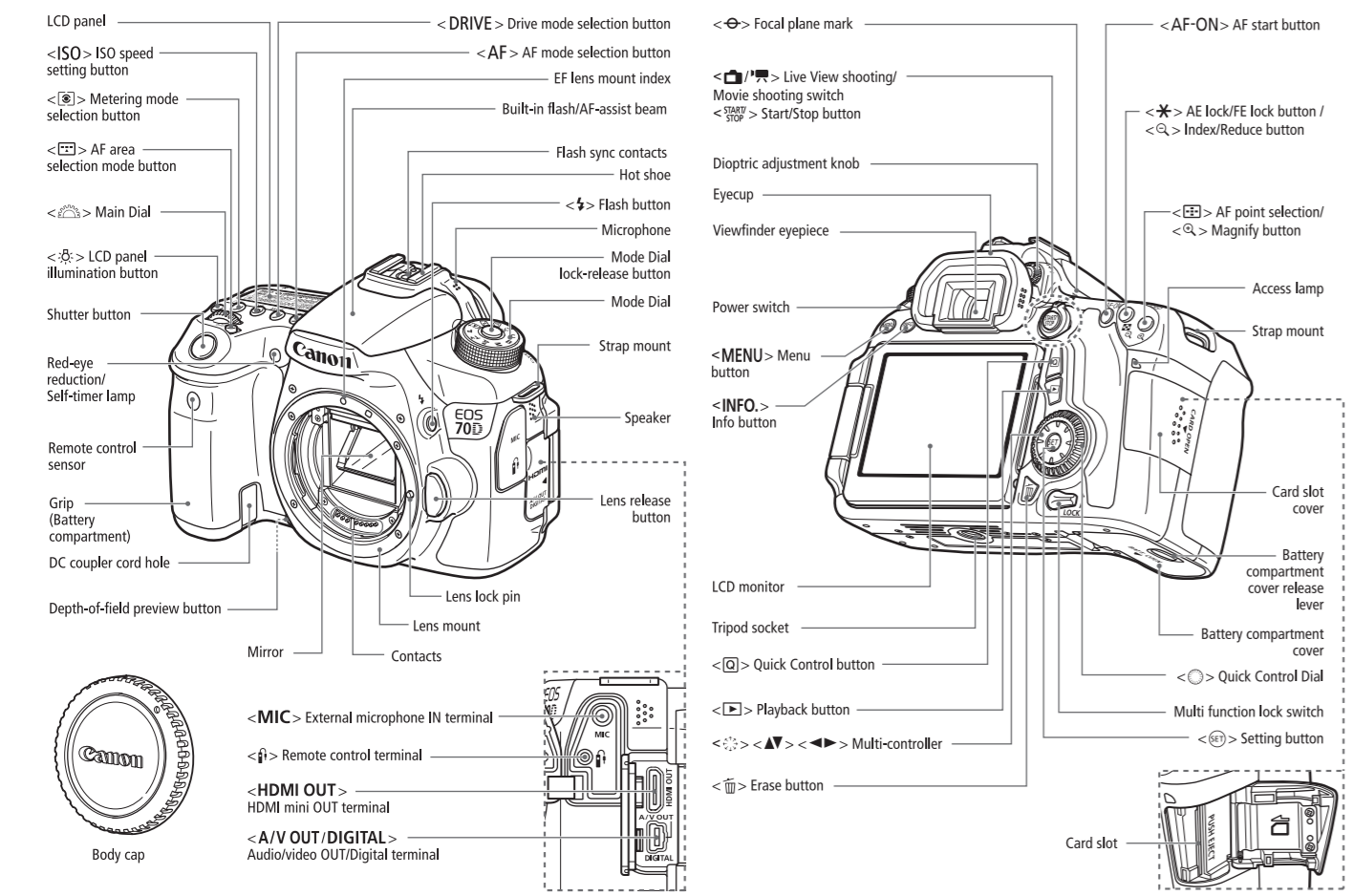


BATTERY GRIP BG-E14

For easier handling during long hours of shooting, the Battery Grip BG-E14 is ergonomically designed to provide photographers with a solid and comfortable grip on the EOS 70D. The Battery Grip BG-E14 ensures extended battery power for high-volume shooting projects by taking in 2 Battery Packs LP-E6 or 6 AA-size batteries.



NOMENCLATURE OF EOS 70D



* The EOS 70D (N) does not have the Wi-Fi function (Not Displayed).
 * The display will show only the settings currently applied.

<p>TYPE Type: Digital, single-lens reflex, AF/AE camera with built-in flash Shutter speed: 1/8000 sec. to 30 sec. (total shutter speed range; available range varies by shooting mode), Bulb, X-sync at 1/250 sec.</p> <p>Recording media: SD memory card, SDHC memory card*, SDXC memory card* *UHS-I cards compatible. Image sensor size: Approx. 22.5 x 15.0mm Compatible lenses: Canon EF lenses (including EF-S lenses) *Excluding EF-M lenses (35mm-equivalent focal length is approx. 1.6 times the lens focal length) Canon EF-mount</p> <p>Lens mount: CMOS sensor Type: Approx. 20.0 megapixels Aspect ratio: 3:2 Dust delete feature: Auto, Manual, Dust Delete Data appending</p>	<p>SHUTTER Type: Electronically-controlled, focal-plane shutter Shutter speeds: Electronically-controlled, focal-plane shutter 1/8000 sec. to 30 sec. (total shutter speed range; available range varies by shooting mode), Bulb, X-sync at 1/250 sec.</p> <p>DRIVE SYSTEM Drive modes: Single shooting, High-speed continuous shooting, Low-speed continuous shooting, Silent single shooting, Silent continuous shooting, 10-sec. self-timer/remote control, 2-sec. self-timer/remote control High-speed continuous shooting : Max. approx. 7.0 shots/sec. Low-speed continuous shooting : Max. approx. 3.0 shots/sec. Silent continuous shooting : Max. approx. 3.0 shots/sec. JPG Large/Fine: Approx. 40 shots (approx. 65 shots) RAW: Approx. 15 shots (approx. 16 shots) RAW+JPG Large/Fine: Approx. 8 shots (approx. 8 shots) *Figures are based on Canon's testing standards. (ISO 100 and Standard Picture Style) and an 8 GB card. *Figures in parentheses apply to a UHS-I compatible 8 GB card based on Canon's testing standards.</p> <p>RECORDER SYSTEM Recording format: Design rule for Camera File System (DCF) 2.0 Image type: JPEG, RAW (14-bit Canon original), RAW+JPEG simultaneous recording possible Recorded pixels: L (Large) : Approx. 20.0 megapixels (5472 x 3648) M (Medium) : Approx. 8.90 megapixels (3648 x 2432) S1 (Small 1) : Approx. 5.0 megapixels (2736 x 1824) S2 (Small 2) : Approx. 2.50 megapixels (1920 x 1280) S3 (Small 3) : Approx. 350,000 pixels (720 x 480) RAW : Approx. 20.0 megapixels (5472 x 3648) M-RAW : Approx. 11.0 megapixels (4104 x 2736) S-RAW : Approx. 5.0 megapixels (2736 x 1824) Create/select a folder: Possible File numbering: Continuous, Auto reset, Manual reset</p>	<p>FLASH Built-in flash: Retractable, auto pop-up flash Guide No.: Approx. 12/39.4 ISO 100, in meters/feet Flash coverage: Approx. 17mm lens angle of view Recycling time approx. 3 sec. Compatible with EX-series Speedlites</p> <p>External Speedlite: E-TTL II autofocus Flash metering: E-TTL II autofocus Flash exposure compensation: ±3 stops in 1/3- or 1/2-stop increments FE lock: Provided PC terminal: None Built-in flash function settings, external Speedlite function settings, external Speedlite Custom Function settings, Wireless flash control via optical transmission</p> <p>LIVE VIEW SHOOTING Aspect ratio: 3:2, 4:3, 16:9, 1:1 Focus methods: Dual Pixel CMOS AF system/Contrast-detection AF system (Face-Tracking, FlexZone-Multi, FlexZone-Single, Phase-difference detection with the dedicated AF sensor (Quick mode), Manual focus (approx. 5x and 10x magnified view possible for focus check)) Continuous AF: EV 0-18 (at room temperature, ISO 100) Metering modes: Evaluative metering (15 zones), Partial metering (approx. 10.3% of Live View screen), Spot metering (approx. 2.6% of Live View screen), Center-weighted average metering EV 0-20 (at room temperature, ISO 100) Evaluative metering (15 zones), Partial metering (approx. 10.3% of Live View screen), Spot metering (approx. 2.6% of Live View screen), Center-weighted average metering</p> <p>Metering brightness range: EV 0-20 (at room temperature, ISO 100) Creative filters: Toy camera effect, Fish-eye effect, Art bold effect, Water painting effect, Toy camera effect, Miniature effect Silent shooting: Provided (Mode 1 and 2) Tilt shutter: Provided Grid display: Three types</p> <p>MOVIE SHOOTING Recording format: MOV Movie: MPEG-4 AVC / H.264 Variable (average) bit rate Audio: Linear PCM Recording size and frame rate: 1920x1080 (Full HD): 30p/25p/24p 1280x720 (HD): 60p/50p 640x480 (SD): 30p/25p *30p: 29.97 fps, 25p: 25.00 fps, 24p: 23.98 fps, 60p: 59.94 fps, 50p: 50.00 fps ALL-I (I-only), IPB File size: 1920x1080 (30p/25p/24p) / IPB : Approx. 235 MB/min. 1920x1080 (60p/50p) / ALL-I : Approx. 685 MB/min. 1280x720 (60p/50p) / IPB : Approx. 205 MB/min. 1280x720 (60p/50p) / ALL-I : Approx. 610 MB/min. 640x480 (30p/25p) / IPB : Approx. 78 MB/min. *Card reading/writing speed necessary for movie shooting: IPB: at least 6 MB per sec./ALL-I: at least 20 MB per sec. Same as focusing with Live View shooting *Quick mode disabled during movie shooting</p> <p>Digital zoom: Approx. 3x-10x Exposure control: Evaluated average and Evaluative metering with the image sensor Compatible with Remote Controller RC-6 Remote control terminal: For Remote Switch RS-60E3 Wireless remote control: Compatible with Remote Controller RC-6 Eye-Fi card:</p> <p>POWER Battery: Battery Pack LP-E6 (Quantity 1) *AC power can be supplied via AC Adapter Kit AC-E6. *With Battery Grip BG-E14 attached, size-AA/LR6 batteries can be used. Remaining capacity, Shutter count, Recharge performance, and Battery registration possible Number of possible shots: (Based on CIPA testing standards) With Live View shooting: Approx. 920 shots at room temperature (23°C/73°F), approx. 850 shots at low temperatures (0°C/32°F) With viewfinder shooting: Approx. 210 shots at room temperature (23°C/73°F), approx. 200 shots at low temperatures (0°C/32°F)</p> <p>Movie shooting time: Approx. 1 hr. 20 min. at room temperature (23°C/73°F), approx. 1 hr. 20 min. at low temperatures (0°C/32°F) *With a fully-charged Battery Pack LP-E6.</p>	<p>OPERATION ENVIRONMENT Working temperature range: 0°C-40°C / 32°F-104°F Working humidity: 85% or less</p> <p>BATTERY PACK LP-E6 Type: Rechargeable lithium-ion battery Rated voltage: 7.2 V DC Battery capacity: 1800 mAh Dimensions (W x H x D): Approx. 38.4 x 21.0 x 56.8 mm / 1.5 x 0.8 x 2.2 in. Weight: Approx. 80g / 23.6 oz.</p> <p>BATTERY CHARGER LC-E6 Compatible battery: Battery Pack LP-E6 Recharging time: Approx. 2 hr. 30 min. Rated input: 100 - 240 V AC (50/60 Hz) Rated output: 8.4 V DC / 1.2 A Working temperature range: 5°C-40°C / 41°F-104°F Working humidity: 85% or less Dimensions (W x H x D): Approx. 69.0 x 33.0 x 93.0 mm / 1.5 x 0.8 x 3.7 in. Weight: Approx. 130g / 23.6 oz.</p> <p>BATTERY CHARGER LC-E6E Compatible battery: Battery Pack LP-E6 Power cord length: Approx. 1 m / 3.3 ft. Recharging time: Approx. 2 hr. 30 min. Rated input: 100 - 240 V AC (50/60 Hz) Rated output: 8.4 V DC / 1.2 A Working temperature range: 5°C-40°C / 41°F-104°F Working humidity: 85% or less Dimensions (W x H x D): Approx. 69.0 x 33.0 x 93.0 mm / 1.5 x 0.8 x 3.7 in. Weight: Approx. 125 g / 4.4 oz. (excluding power cord)</p> <p>EF-S18-55mm f/3.5-5.6 IS STM Angle of view: Diagonal extent: 74°20'-27°50' Horizontal extent: 64°30'-23°20' Vertical extent: 45°30'-15°40' Lens construction: 13 elements in 11 groups Minimum aperture: f/22-36 Field of view: 199 x 129-83 x 42 mm / 7.83 x 5.08-2.48 x 1.65 in. (at 0.25 m / 0.82 ft.) Closest focusing distance: 0.25 m / 0.82 ft. (from image sensor plane) Max. magnification: 0.36x (at 55 mm) Image Stabilizer: 13 elements in 11 groups Filter size: 58 mm Lens cap: E-58 II Max. diameter x length: Approx. 69.0 x 75.2 mm / 2.72 x 2.96 in. Weight: Approx. 205 g / 7.2 oz. Hood: EW-63C (sold separately) Case: LP1016 (sold separately)</p> <p>EF-S18-135mm f/3.5-5.6 IS STM Angle of view: Diagonal extent: 74°20'-11°30' Horizontal extent: 64°30'-9°30' Vertical extent: 45°30'-6°20' Lens construction: 16 elements in 12 groups Minimum aperture: f/22-36 Field of view: At 18 mm focal length: 0.39 m / 1.28 ft. (Approx. 372 x 248 mm / 14.6 x 9.8 in. field of view) At 135 mm focal length: 0.39 m / 1.28 ft. (Approx. 80 x 53 mm / 3.1 x 2.1 in. field of view) Closest focusing distance*: At 18 mm focal length: 0.39 m / 1.28 ft. (Approx. 372 x 248 mm / 14.6 x 9.8 in. field of view) *Distance from image sensor plane Max. magnification: 0.28x (at 135 mm) Image Stabilizer: Lens shift type Filter size: 67 mm Lens cap: E-67 II Max. diameter x length: Approx. 76.6 x 96.0 mm / 3.0 x 3.8 in. Weight: Approx. 480 g / 16.9 oz. Hood: EW-78B (sold separately) Case: LP1116 (sold separately)</p> <p>EF-S18-200mm f/3.5-5.6 IS II Angle of view: Diagonal extent: 74°20' - 7°50' Horizontal extent: 64°30' - 8°30' Vertical extent: 45°30' - 4°20' Lens construction: 16 elements in 12 groups Minimum aperture: f/22-36 Closest focusing distance: 0.45 m / 1.48 ft. (From image sensor plane) Max. magnification: 0.24x (at 200 mm) Field of view: 452 x 291 - 93 x 62 mm / 17.8 x 11.5 - 3.7 x 2.4 in. (at 0.45 m / 1.48 ft.) Image Stabilizer: Lens shift type Filter size: 72 mm Lens cap: E-72 II Max. diameter x length: Approx. 78.6 x 102.0 mm / 3.1 x 4.0 in. Weight: Approx. 595 g / 21.0 oz. Hood: EW-78D (sold separately) Case: LP1116 (sold separately)</p>
<p>*All the data above is based on Canon's testing standards and CIPA (Camera & Imaging Products Association) testing standards and guidelines. *Dimensions, maximum diameter, length and weight listed above are based on CIPA Guidelines (except weight for camera body only). *Product specifications and the exterior are subject to change without notice. *If a problem occurs with a non-Canon lens attached to the camera, consult the respective lens manufacturer.</p>			



SOUTH & SOUTHEAST ASIA REGIONAL HEADQUARTERS

CANON SINGAPORE PTE. LTD.

1 HarbourFront Avenue,
#04-01 Keppel Bay Tower,
Singapore 098632

www.canon-asia.com

Errors and omissions excepted.
Images are simulated.
Weight and dimensions are approximate.
Subject to change without notice.
Macintosh is a trademark of Apple Computer Inc., registered in the United States and other countries. Microsoft® and Windows® are either registered trademarks or trademarks of Microsoft Corporation in the United States and/or other countries. Wi-Fi is a trademark. Other names and products not mentioned above may be registered trademarks or trademarks of their respective companies.
Canon is a registered trademark of Canon Inc.

Warning: Unauthorized recording of copyrighted materials may infringe on the rights of copyright owners and be contrary to copyright laws.

0180W346

Canon Imaging Asia Canon Asia

www.canon-asia.com/eos70d

CANON OFFICES

MALAYSIA

Canon Marketing (Malaysia) Sdn. Bhd.
Tel : 60-3-78446000
Fax : 60-3-78450505
www.canon.com.my

SINGAPORE

Canon Singapore Pte. Ltd.
Domestic Operations
Tel : 65-6799-8888
Fax : 65-6798-8882
www.canon.com.sg

THAILAND

Canon Marketing (Thailand) Co. Ltd.
Tel : 66-2-3449999
Fax : 66-2-3449988
www.canon.co.th

VIETNAM

Canon Marketing Vietnam Co. Ltd.
Ho Chi Minh City
Tel : 848-3820-0466
Fax : 848-3820-0477

HANOI

Tel : 844-37711677
Fax : 844-37711678
www.canon.com.vn

CANON BUSINESS PARTNERS

BANGLADESH

J.A.N. Associates Ltd.
Tel : 880-2-9660601
Fax : 880-2-8610410

BRUNEI

Interhouse Company
Tel : 673-2-653001
Fax : 673-2-653003

CAMBODIA

i-Qlick (Cambodia) Pte. Ltd.
Tel : 855-23-996638
Fax : 855-23-996639

INDONESIA

PT Datascrip
Canon Call Center
Tel : 021-2922-6000
Fax : 62-21-6544811 to 13
www.canon.co.id

MALDIVES

SIMDI Company (Pvt). Ltd.
Tel : 960-3334421
Fax : 960-3334424

MYANMAR

Myanmar Golden Rock
International Co. Ltd.
Tel : 001-95-1654810 to 95-1654817
Fax : 001-95-1654820

NEPAL

Primax International Inc.
Tel : 977-1-4225042
Fax : 977-1-4429358

PAKISTAN

MBM
Tel : 92-21-32735322
Fax : 92-21-32721128

SRI LANKA

Metropolitan Computers (Pvt.) Ltd.
Tel : 94-114-700-200
Fax : 94-114-700-398