



CREATING THE ULTIMATE OFFROAD RIDING EXPERIENCE.

Welcome to the new Arctic Cat. Like you, we are enthusiasts who are empowered by the great outdoors. We are motivated by our passion for hard work and the pursuit of adventure. At Arctic Cat we are committed to building products and providing services that deliver the experience enthusiasts expect from us. This commitment is engineered into our engines, our chassis, our suspensions, our gear and our accessories. We wear our pride on our sleeves and across our chests — a statement to the world that everything we do is done with purpose and precision. That's how we create the ultimate offroad riding experience for fellow enthusiasts who Share Our Passion.™ We would like to invite you to come ride with us.



ARCTICCAT.COM Arctic Cat's online HQ. Everything from machines and specs down to the accessories and gear you need to take on the world on four wheels.

ATVs and ROVs can be hazardous to operate. Improper use can cause severe injury or death. Each rider must wear a seat belt (on ROVs), an approved helmet, eye protection and protective clothing; use handholds/steering wheel and stay completely inside the vehicle. ROV operators must have a valid driver's license (no operators under age 16) and all riders must be able to sit with their back against the seat, feet flat on the floor and hands on handholds/steering wheel. Each rider must read and understand the operator's manual before riding. Follow all instructions and warnings. Avoid abrupt maneuvers, paved surfaces, hard acceleration when turning, and sidehilling; slow down before entering a turn. Never engage in stunt driving. Avoid excessive speeds and be particularly careful on difficult terrain. Never carry a passenger in the cargo box or exceed seating capacity on an ROV; never carry a passenger on a single-rider ATV. ATVs are recommended only for users over 12 years old. Only ride an ATV that is right for your age. Supervise riders younger than 16. Never operate on public roads unless designated for off-highway vehicle access — collisions with cars and trucks can occur. Never drive or ride under influence of alcohol or drugs. Do not shoot from or lean firearms or bows against the ATV or ROV. Arctic Cat recommends that all riders take a training course. For safety or training information in the U.S., call the ATV Safety Institute at (800) 887-2887. In Canada, please contact the Canada Safety Council at (613) 739-1535 or see your dealer. For ROV training visit <http://rohva.org>. Along with concerned conservationists everywhere, Arctic Cat urges you to "Tread Lightly" on public and private lands. Ride only on designated areas or trails. Preserve your future riding opportunities by showing respect for the environment, local laws and the rights of others when riding. All materials and specifications are subject to change without notice. All specifications, competitive specifications, claims and information contained within are based on current knowledge and readily available printed material as of August 1, 2015. Carlisle® and Trail Pro® are registered trademarks of CTP Transportation Products, LLC. Elka® is a registered trademark of Elka Suspension Inc. FOX® and FOX FLOAT® are registered trademarks of FOX Racing Shox. Maxxis® is a registered trademark of Maxxis International. ProVantage™ is a trademark of Warn Industries, Inc. Surlyn® by DuPont™ is a registered trademark of E.I. du Pont de Nemours and Company or its affiliates. TEAM® Rapid Response™ is a trademark of TEAM Industries. Arctic Cat,™ Alterra,™ Cat,™ Duramatic,™ DVX,™ HDX,™ MudPro,™ Prowler,™ Ready 2 Roll,™ Share Our Passion,™ SpeedLock,™ SpeedRack,™ TBX,™ Wildcat™ and XT™ are trademarks or registered trademarks of Arctic Cat Inc. ©2015 Arctic Cat Sales Inc., Thief River Falls, MN 56701. Arctic Cat ATVs and Side by Sides (ROVs) are world-class products from Arctic Cat Inc. Printed in the USA.

Part #5264-091 US/CE ATV150021



2016

SIDE BY SIDES AND ATVS

YOU VS OFFROAD





TAKE ON THE WORLD

Arctic Cat® Side by Sides and ATVs are designed and engineered to give you the edge. Whether you're hauling fence posts, climbing a rocky mountainside, up to your headlights in mud or staying dry on a smooth trail, there's an Arctic Cat machine for you. The 2016 lineup ushers in the new Alterra™ redesigned to be the ultimate ATV. The HDX™ packs a new take-on-anything body style, while our Ready 2 Roll™ accessory packages offer everything needed to get the job done. It's you vs. the world out there. Get ready to win.



Some models shown with accessories.

SIDE BY SIDE TECHNOLOGY

WILDCAT™

POWER

A 951cc (X models), H2, liquid-cooled V-Twin EFI engine provides the efficiency advantages of 4 valves per cylinder with its Pentroof Hemispherical Combustion Chamber. Oxygen enters the machine through a 50mm throttle body, and leaves through a 2-into-1 tuned ceramic-coated exhaust with a new pipe and closed loop EFI system, improving your fuel efficiency. Each H2 engine is assembled at Arctic Cat's state-of-the-art St. Cloud, Minnesota, facility. Trail and Sport models are powered by 700cc, 4-stroke, twin cylinder engines.

951cc, H2, liquid-cooled V-Twin EFI

700cc, 4-stroke, twin cylinder



HAYES BRAKES

Wildcat X and Sport models get the impressive Twin Piston Calipers by Hayes.

PERFORMANCE SHOCKS

The Wildcat X gets the agile 2.5" Jri EXC-1 with compression adjustment while the X Limited gets the impressive Elka® Stage 5 shocks with high and low speed compression dampening plus rebound adjustment, delivering professional racing performance.



5-LINK REAR SUSPENSION

Five linked rods work as one to keep the tire's contact patch flat throughout all 18" of travel by reducing camber and axle plunge. 13" of ground clearance keeps you above almost any terrain below.



SURLYN BODY PANELS A redesign of the HDX XT™ prompted the use of super tough Surlyn® by DuPont™ a resilient, resin-based material borrowed from Arctic Cat's time-tested snowmobile technology. Surlyn requires no painting and is scratch-resistant.

DASH SHIFTER AND TILT STEERING

The HDX's dash features infinitely adjustable tilt steering, a large glove box and a small center cubby for gloves, snacks, drinks, maps — the important stuff. A dash shifter with park keeps the power at your fingertips.

HDX



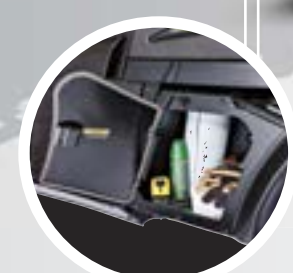
CARGO BOX CONVERSION The HDX's 56" x 42.5" cargo box features 1,000 lbs. and 2,380 cubic inches of payload capacity. If you're hauling a wider load, the 2-in-1 tilting cargo box converts to a flatbed in minutes — wide enough to fit a full-size pallet.

LED LIGHT BAR

The LED light bar and halogen headlights team up to provide a brighter beam and modern look.

READY TO BEAR WEIGHT

As your load gets heavier, give your pressure-adjustable rear FOX FLOAT® shocks a pump.



TEAM RAPID RESPONSE CLUTCH

The rugged TEAM® Rapid Response™ is a perfect complement to each Wildcat's continuously variable transmission (CVT). Thanks to a lightweight design that creates minimal friction, power transfer is effortless. Shifts occur automatically and instantly in response to the vehicle no matter how hard you hammer the throttle. Ride on.

LED LIGHT SHOW

Clocking in at 216 lumens on low, 384 on high, the Wildcat X comes equipped with dual LED headlights and taillights.

INDUSTRY-LEADING ENCLOSED STORAGE The automotive-style hood opens from the front, just like your truck, making it easier to gain access to the massive 22.4-gallon underhood storage box, radiator and brake fluid reservoir. Use the hinge lever, lock the hood in the upright position and take it all in. Need extra storage? Compartments in front of the rear wheels can carry that for you, not to mention the massive glove box.

ATV TECHNOLOGY

ALTERRA



HALOGEN HEADLIGHT & LED LIGHT BAR

With the Alterra, luxury comes standard from front to back. Literally. The front features an LED light bar that shines with pure style, day in and night out while the back gets LED tail lights.

11" OF GROUND CLEARANCE / 10" OF SUSPENSION TRAVEL

Excellent ground clearance, immense suspension travel, a rear sway bar and a softer spring rate all combine to soak up ruts the size of fault lines.

PICK YOUR POWER

If you want to talk about options, the new Alterra is available in 700 (695cc), 550 (545cc), 500 (443cc), 450 (443cc) EFI, as well as the 400 (366cc) models. Each engine's liquid cooling system keeps these SOHC, 4-stroke, 4-valve-powered machines muscling through everything, while the 400's air/oil cooling system refuses to slow you down.



ERGONOMICS AND TURNING RADIUS

The new Alterra chassis features a more upright sitting position, delivering improved ergonomics and reducing handling effort. These machines are indeed more maneuverable, with an improved turning radius, while requiring a shorter reach from the rider.



— New ergonomic body position
— Old body position

SPEEDRACK II

14 SpeedLock™ attachment points



SPEEDRACK® II Constructed from high-grade rubberized, impact-resistant material on top of a layer of reinforced steel, you can pile heavy loads and freezing temperatures on it without it breaking down. It also features 14 SpeedLock attachment points for easy-on, easy-off accessories.



RUBBERIZED ANTI-SLIP SURFACE

The TPE rubber coating keeps objects from sliding around, so you can trust that your cargo is being hauled safely and securely as you muscle over the terrain.

REAR STORAGE COMPARTMENT

This 1.44-gallon rear storage compartment is a much-appreciated addition. Plus it's water-resistant.



SPEEDLOCK™

This durable, cast-aluminum drop-in system quickly attaches with easy-to-use SpeedLocks, and unlocks in one click for fast removal. Simply the fastest and strongest ATV accessory system in the industry.



ROUND IT OUT WITH RIMS

The Alterra's one-piece, double-spoke cast-aluminum rims are lightweight, lending themselves to the machine's all-terrain state of mind. They also look rugged and mean, but that's just a given.

HAYES BRAKES

The Alterra takes braking to the next level with Hydraulic Disc Brakes by Hayes.



ON-THE-FLY 2WD/4WD WITH FRONT DIFFERENTIAL LOCK SWITCH

Arctic riders prefer to be in control with their on-the-fly 2WD/4WD. Tackle more rugged terrain by locking the front differential with a flick of the switch.



WILDCAT X

NOTHING'S AS WILD

The Wildcat X, also available in Limited and 4-up packages, stays true to its rugged roots with TEAM Rapid Response clutch and a 951cc, 90+ HP, V-Twin, torque-tuned motor to match. Duro Power Grip tires and JRI ECX-1 adjustable shocks tackle the trail with ease. Its full-perimeter frame boasts a low center of gravity with a 40/60 weight distribution. The X Limited is even wilder. The molded roof and full doors come standard, as do front and rear bumpers and beadlock aluminum rims. Elka Stage 5 shocks with high and low speed compression dampening gives you the professional performance only Arctic Cat can deliver.

Some models shown with accessories.



GO TO ARCTICCAT.COM TO GET ALL THE SPECS FOR YOUR MACHINE



SUSPENSION TRAVEL

Our best-in-class suspension gives you 17" of travel up front and 18" in the rear, thanks to our 5-Link Rear Suspension. 13" of ground clearance lets you traverse almost any terrain.



READY 2 ROLL™ DECKED-OUT ACCESSORY PACKAGE



- Brushed Aluminum Front Bumper for Winch
- Brushed Aluminum Rear Bumper
- Stereo-Ready Hardtop
- Stereo Kit
- Flip-up Windshield
- 5,000-lb. ProVantage™ Winch Kit
- Front Winch Mount
- Shoulder Bag

WILDCAT X

- ← Two Race-Inspired Seats
- ← Infinite Tilt Steering
- ← Half Doors
- ← JRI ECX-1 Shocks
- ← Aluminum Rims



COLOR OPTIONS

WILDCAT X LTD

- ← Molded Roof
- ← Two Race-Inspired Seats
- ← Infinite Tilt Steering
- ← Full Aluminum Doors
- ← Elka Stage 5 Shocks
- ← Beadlock Aluminum Rims



COLOR OPTION

WILDCAT 4X

- ← Four Race-Inspired Seats
- ← Infinite Tilt Steering
- ← Half Doors
- ← JRI ECX-1 Shocks
- ← Aluminum Rims



COLOR OPTION

WILDCAT SPORT

POUND-FOR-POUND PERFORMANCE

Legendary performance is what makes Wildcat Sport, XT and Limited models purr. Trail or off-trail, each features a low center of gravity and high power-to-weight ratio, giving you better acceleration, climbing ability and top-end speed, so you can ride confident. Standard packages have a 60" wheel stance and high-performance suspension. The XT gets electronic power steering (EPS) plus packs nitrogen-charged JRI ECX shocks. The Limited boasts Elka Stage 5 shocks with high/low compression dampening and EPS. To top it off, Carlisle® Trail Pro® 4-ply tires devour tough terrains as you ride inside full doors.



Some models shown with accessories.

POWER TO WEIGHT

The 700cc, 4-stroke, twin cylinder engine combines with a total dry weight of 1,074 lbs. to take you places you never thought possible.



READY 2 ROLL™ DECKED-OUT ACCESSORY PACKAGE



- Black Aluminum Front Bumper
- Black Aluminum Rear Bumper
- 3,000-lb. ProVantage Winch Kit
- Flip-up Windshield
- Shoulder Bag
- Hardtop Spoiler
- Hardtop



GO TO ARCTICCAT.COM TO GET ALL THE SPECS FOR YOUR MACHINE

SPORT

Infinite Tilt Steering →

Carlisle Trail Pro Tires ↘

COLOR OPTION



← Two Race-Inspired Seats

← Half Doors

← JRI ECX-1 Shocks

← Steel Rims

SPORT XT

Infinite Tilt Steering →

Electronic Power Steering →

Carlisle Trail Pro Tires ↘

COLOR OPTION



← Two Race-Inspired Seats

← Automotive-Style Paint

← Half Doors

← JRI ECX-1 Shocks

← Aluminum Rims

↑ Color-Matched Suspension Arms

SPORT LTD

Infinite Tilt Steering →

Electronic Power Steering →

Carlisle Trail Pro Tires ↘

COLOR OPTION



← Two Race-Inspired Seats

← Automotive-Style Paint

← Full Aluminum Doors

← Elka Stage 5 Shocks

← Color-Matched Aluminum Rims

↑ Color-Matched Suspension Arms

WILDCAT TRAIL

THE PERFECT FIT

The Wildcat Trail has been cleared for trail gates and tailgates alike. Impossibly lean and incredibly mean at just 50" wide, this 700 twin engine-powered machine fits in the back of your pickup and through certified trail entries. The 40/60 weight distribution, compact powertrain design and low center of gravity team up with 10" of ground clearance and 10.5" of rear suspension travel for amazing flat cornering and terrain coverage. The XT features electronic power steering, custom aluminum wheels and automotive-style paint.

50" Wide



50" Wide



GO TO ARCTICCAT.COM TO GET ALL THE SPECS FOR YOUR MACHINE

Some models shown with accessories.



READY 2 ROLL™ GEARED-UP ACCESSORY PACKAGE

- Bimini Top
- Steel Front Bumper
- Steel Rear Bumper
- Half Windshield



TRAIL

Infinite Tilt Steering →

Cartisle Trail Pro Tires

COLOR OPTIONS



← Two Race-Inspired Seats

← Half Doors

← FOX Shocks

← Steel Rims

TRAIL XT

Infinite Tilt Steering →

Electronic Power Steering →

Cartisle Trail Pro Tires

Color-Matched Suspension Arms →

COLOR OPTIONS



← Two Race-Inspired Seats

← Half Doors

← Automotive-Style Paint

← FOX Shocks

← Aluminum Rims



Fits in the back of a standard pickup

HDX

MAKE HARD WORK EASY

The HDX XT is the ultimate working machine, available in a 700 and 500 model, and ready to take on the tougher tasks. New in 2016 is the bring-it-on body style and automotive-style hood. The payoff is the payoff, with an industry-leading tilting 2-in-1 cargo box converting to a flatbed for 1,000 lbs. of carrying capacity on top of rugged FOX FLOAT coil-over adjustable shocks (700 only). Side and underhood compartments store your work essentials, while tilt steering and the three-person bench seat are perfect for when your cargo includes a couple extra helping hands.

Some models shown with accessories



CLASS-DOMINATING STORAGE CAPACITY

The automotive-style hood opens from the front, just like your truck, making it easier to gain access to the massive 22.4-gallon underhood storage box. Compartments in front of the rear wheels can carry everything else for you, not to mention the massive glove box.

GO TO ARCTICCAT.COM TO GET ALL THE SPECS FOR YOUR MACHINE



The LED light bar and halogen headlights



READY 2 ROLL™ DECKED-OUT ACCESSORY PACKAGE

- LXC Roof
- Front Brushguard Bumper
- Rear Bumper
- Full Windshield
- 5,000-lb. ProVantage Winch
- V-Bag
- Stereo Kit
- Side Mirrors



HDX 500 XT

Infinite Tilt Steering →

22.4-Gallon Underhood Storage Area →



COLOR OPTION



HDX 700 XT

Infinite Tilt Steering →

Electronic Power Steering →
22.4-Gallon Underhood Storage Area →



COLOR OPTIONS



As your load gets heavier, give your pressure-adjustable rear FOX FLOAT® shocks a pump



Transformable tilting 1,000-lb. capacity rear cargo box converts to a flatbed

PROWLER

ALWAYS ON THE PROWL

The Prowler® 1000 XT and 700 XT are the epitome of versatility. Electronic power steering (EPS) and the infinitely adjustable tilt steering column make driving anywhere second nature. The 2WD/4WD with locking front differential lets you shift on the fly. The rear cargo box hauls up to 600 lbs., while the rear 2" receiver makes pulling 1,500 lbs. look easy. Scratch-resistant Surlyn body panels let you get dirty while keeping the paint job clean.

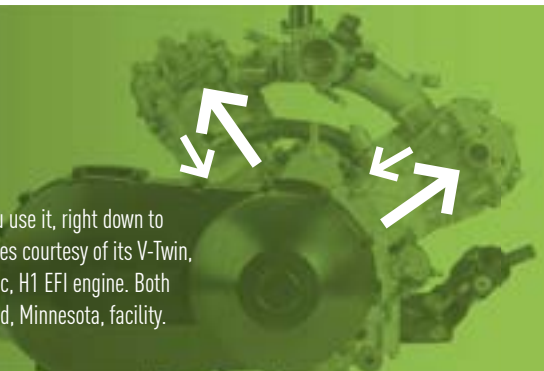


Some models shown with accessories.



POWER 1000 / 700

Every aspect of the Prowler gives you variability in the way you use it, right down to the engine. The 1000's category-dominating performance comes courtesy of its V-Twin, 951cc, H2 power plant. The 700 comes standard with the 695cc, H1 EFI engine. Both were built by passionate riders-turned-workers in our St. Cloud, Minnesota, facility.



READY 2 ROLL™ DECKED-OUT ACCESSORY PACKAGE

- LXC Roof
- Front Brushguard Bumper
- Rear Bumper
- Full Windshield
- 5,000-lb. ProVantage Winch
- V-Bag
- Stereo Kit
- Side Mirrors



700 XT

22.4-Gallon Underhood Storage Area →

Electronic Power Steering →

Duro Kaden Tires →

 COLOR OPTIONS



← Infinite Tilt Steering

← Tilting Cargo Box

← Rear 2" Receiver Hitch

← Aluminum Rims

1000 XT

22.4-Gallon Underhood Storage Area →

Electronic Power Steering →

Maxxis Bighorn Tires →

 COLOR OPTION



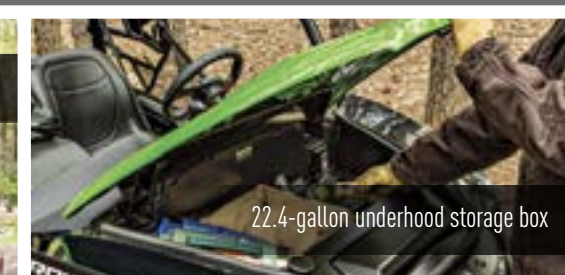
← Infinite Tilt Steering

← Tilting Cargo Box

← Rear 2" Receiver Hitch

← Aluminum Rims

600-lb. capacity tilting rear cargo box



22.4-gallon underhood storage box



ALTERRA

FULL-SIZED, FULLY LOADED

Meet the new Alterra — the recreational ATV where Duramatic™ automatic transmission, on-the-fly 2WD/4WD with locking front differential, an Arctic Cat-built H1 engine for superior power, electronic fuel injection (EFI) and liquid cooling come standard. Not to mention the Power Sport digital gauge. The XT package boasts performance-calibrated suspension, EPS and aluminum rims, while a halogen headlight with an LED light bar guides the way after the sun sets. All-terrain vehicles should be built for all terrains, and that's exactly why we built the Alterra.



Some models shown with accessories.



Unmatched ergonomics



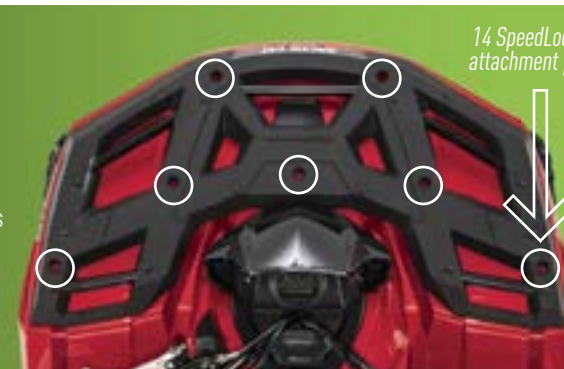
Improved turning radius



200-lb. rack capacity

SPEEDRACK II

Constructed from high-grade, anti-slip rubberized, impact-resistant material on top of a layer of reinforced steel, the SpeedRack II handles heavy loads and freezing temperatures without breaking down. The TPE rubber coating prevents your cargo from sliding around as you traverse all terrains.



14 SpeedLock attachment points

READY 2 ROLL™ DECKED-OUT ACCESSORY PACKAGE

- Aircat Hand Guards
- Front Bumper
- Rear Bumper
- 3" Rack Extension
- 6" Rack Extension
- SpeedLock — 4 CT.
- 3,000-lb. ProVantage Winch
- Rack Bag



ALTERRA



Front and Rear SpeedRack II

Rear 2" Receiver Hitch

Steel Rims

550 / 700 COLOR OPTION

Duro Kaden Tires

ALTERRA XT



Electronic Power Steering

Front and Rear SpeedRack II

Automotive-Style Paint

Rear 2" Receiver Hitch

Aluminum Rims

LED Light Bar

Duro Kaden Tires

500 XT

550 XT

700 XT COLOR OPTIONS

Rear storage compartment



11" of ground clearance

ALTERRA MID-SIZED

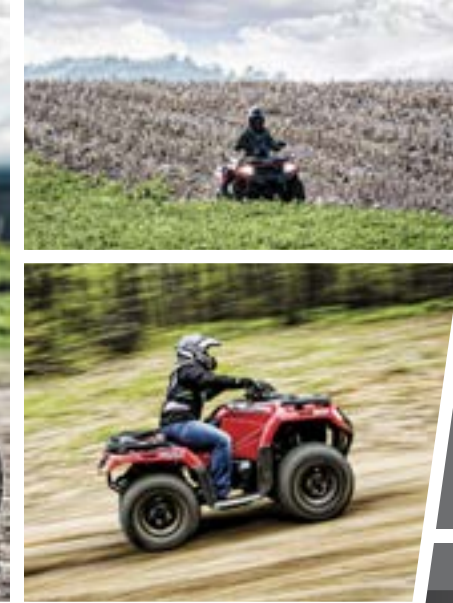
**BUILT FOR OUTSIDE.
BUILT TO OUT RIDE.**

We took the brand-new body style and endless capabilities of the full-sized Alterra, and adapted them for the more compact 450/400 mid-sized models. Part workhorse, part warrior, these machines are more nimble, lightweight and versatile than the competition. Everything from the Duramatic automatic transmission, trail-tuned independent suspension, on-the-fly 2WD/4WD and rear 2" receiver, all the way down to the Kenda® Pathfinder tires on powder-coated rims that give you 10" of ground clearance. Needless to say, we didn't mess around with these newly styled Alterras.



GO TO ARCTICCAT.COM TO GET ALL THE SPECS FOR YOUR MACHINE

Some models shown with accessories.



POWER

450 / 400

Compact in size, huge in capability. As quick, light and agile as a Cat™ can be, the Alterra Mid comes in both a 450 and 400 engine model. Just like the full-sized Alterras, the 450 and 400 are SOHC, 4-stroke, 4-valve machines, unafraid to show what they're made of.



400

Kenda Pathfinder Tires →



COLOR OPTIONS



Front and Rear
← Impact-Resistant Racks

← Rear 2" Receiver Hitch

← Powder-Coated Steel Rims

450

Kenda Pathfinder Tires →



COLOR OPTIONS



Front and Rear
← Impact-Resistant Racks

← Rear 2" Receiver Hitch

← Powder-Coated Steel Rims

1000 XT

TRAIL-TESTED PERFORMANCE

The 1000 XT is revered for its 951cc, Arctic Cat-built H2 EFI engine's performance, as well as its durability and proven trail record. To beef up an already impressive list of features, these machines come standard with electronic power steering (EPS), ride-in front and rear suspension, an on-machine SpeedRack and easy-access storage. You also get Maxxis Bighorn 2.0 tires wrapped around aluminum rims, which pair nicely with the toughness of that automotive-style paint.



GO TO ARCTICCAT.COM TO GET ALL THE SPECS FOR YOUR MACHINE



11" of ground clearance

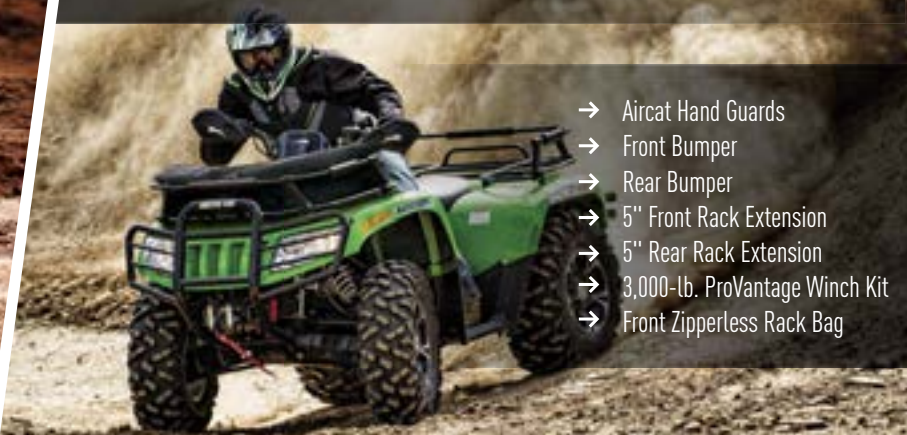


Digital/Analog gauge



Maxxis Bighorn tires

READY 2 ROLL™ DECKED-OUT ACCESSORY PACKAGE



- Aircat Hand Guards
- Front Bumper
- Rear Bumper
- 5" Front Rack Extension
- 5" Rear Rack Extension
- 3,000-lb. ProVantage Winch Kit
- Front Zipperless Rack Bag

TBX 700

YOUR NEW WORKHORSE

Throttle through your workday with the 695cc, H1 EFI engine — built at our St. Cloud, Minnesota, facility — plus electronic power steering (EPS). Haul 300 lbs. in the tilting rear cargo and 100 more on the SpeedRack up front. If that wasn't enough, side storage boxes in front of both rear wheels carry any extra cargo you have. The 700 TBX™ is top-to-bottom utility, while refusing to slow down in the performance department.



On-the-fly 2WD/4WD with locking front differential

Massive storage compartments in front of both rear wheels



Tilting cargo box with easy-access tailgate



MUDPRO™ 700 LTD

GO AHEAD, GET DIRTY

The MudPro is made for mud. Plain and simple. Huge 28" Maxxis Zilla tires definitively mounted to beadlock aluminum rims give you 14" of ground clearance. The on-the-fly 2WD/4WD with front differential lock powered by a CVT transmission with engine braking system muscled the machine through mud and dirt. Looking to get extreme? The elevated snorkel air intake pumps clean air to the engine. Fresh air is also channeled to the clutch, keeping the CVT belt dry and cool.



Beadlock aluminum rims



Elevated snorkel air intake



XC 450

THE EXTREME SPORT

The XC 450 features the high-performance 443cc, 4-stroke, H1 engine with a potent 4-valve design. The dual A-arm suspension commands 10" of ground clearance and 7" of travel. On-the-fly 2WD/4WD adapts to terrain and riding style. On steep grades, the engine-braking system complements powerful hydraulic disc brakes.



COLOR OPTION



Digital gauge



On-the-fly 2WD/4WD

COLOR OPTION

GO TO ARCTICCAT.COM TO GET ALL THE SPECS FOR YOUR MACHINE



500

BIGGER BANG FOR FEWER BUCKS

Power and efficiency are key, and our best-selling 500 is thriving in both departments. The 443cc SOHC, 4-valve engine with EFI can outlast, outwork and outride the toughest competition. You get on-the-fly 2WD/4WD with locking front differential, 11" of ground clearance and 10" of suspension travel to make any terrain bow down. Plus, the 100-lb. front and 200-lb. rear rack capacities do all the heavy lifting, so all you have to do is ride like there's no tomorrow.



COLOR OPTIONS



Some models shown with accessories.



On-the-fly 2WD/4WD with front differential lock



READY 2 ROLL™ DECKED-OUT ACCESSORY PACKAGE

- Aircat Hand Guards
- Front Bumper
- Rear Bumper
- 5" Front Rack Extension
- 5" Rear Rack Extension
- 3,000-lb. ProVantage Winch Kit
- Front Zipperless Rack Bag



300

NIMBLE & QUICK

The 300 not only has plenty of what you need to explore your favorite trail system, it's also a great little work machine. This 2WD wheeler comes with powder-coated steel wheels, 50-lb. front and 100-lb. rear capacity steel racks. Don't forget the easy-to-read digital gauge that keeps all the important information right at your fingertips.



300

MINIMUM OPERATOR AGE — 16



COLOR OPTION

150

MINIMUM OPERATOR AGE — 14



COLOR OPTION

YOUTH

START 'EM YOUNG

The 90 and DVX™ 90 feature easy-to-use electric start with a kick-start backup, automatic choke standard and daytime running lights. Meanwhile, the 150 4x2 gives them something to graduate to. With a 300-lb. towing capacity and front and rear tracks, the kids can ride, work and have outdoor fun right alongside you.



90

MINIMUM OPERATOR AGE — OVER 12



90 UTILITY

DVX 90 COLOR OPTION

GO TO ARCTICCAT.COM TO GET ALL THE SPECS FOR YOUR MACHINE



2016

SPECIFICATIONS



Engine Displacement (cc), Engine Type

Cooling System

Bore & Stroke (mm)

Alternator Capacity (amps)

Fuel Capacity gal. (liters)

Power Steering

Transmission

Drive System

Brakes Front / Rear

Front Suspension / Travel in. (cm)

Rear Suspension / Travel in. (cm)

Ground Clearance in. (cm)

Shocks

Front Tire / Size

Rear Tire / Size

Wheels

Overall Size LxWxH in. (cm)

Wheelbase in. (cm)

Dry Weight lbs. (kg)

Front/Rear Rack or Box Capacity lbs. (kg)

Towing Capacity lbs. (kg)

Hitch Type

Instrumentation

Lighting

Available Colors

Infinitely Adjustable Tilt Steering

Racks

Additional Features

	WILDCAT			WILDCAT SPORT			WILDCAT TRAIL		PROWLER		HDX		ALTERRA		
	Wildcat 4X EPS	Wildcat X Limited EPS	Wildcat X EPS	Wildcat Sport Limited EPS	Wildcat Sport XT EPS	Wildcat Sport	Wildcat Trail XT EPS	Wildcat Trail	Prowler 1000 XT EPS	Prowler 700 XT EPS	HDX 700 XT EPS	HDX 500 XT	Alterra 700 XT EPS	Alterra 700	Alterra 550 XT EPS
Engine Displacement (cc), Engine Type	951, V-Twin, SOHC, High Output 4-Stroke	951, V-Twin, SOHC, High Output 4-Stroke	951, V-Twin, SOHC, High Output 4-Stroke	700, 4-Stroke, Twin Cylinder	700, 4-Stroke, Twin Cylinder	700, 4-Stroke, Twin Cylinder	700, 4-Stroke, Twin Cylinder	700, 4-Stroke, Twin Cylinder	952, V-Twin, SOHC, 4-Stroke, 4-Valve w/EFI	695, SOHC, 4-Stroke, 4-Valve w/EFI	695, SOHC, 4-Stroke, 4-Valve w/EFI	443, SOHC, 4-Stroke, 4-Valve w/EFI	695, SOHC, 4-Stroke, 4-Valve w/EFI	695, SOHC, 4-Stroke, 4-Valve w/EFI	545, SOHC, 4-Stroke, 4-Valve w/EFI
Cooling System	Liquid with Dual Fan	Liquid with Dual Fan	Liquid with Dual Fan	Liquid with Fan	Liquid with Fan	Liquid with Fan	Liquid with Fan	Liquid with Fan	Liquid with Fan	Liquid with Fan	Liquid with Fan	Liquid with Fan	Liquid with Fan	Liquid with Fan	Liquid with Fan
Bore & Stroke (mm)	92x71.6	92x71.6	92x71.6	76.9x75.3	76.9x75.3	76.9x75.3	76.9x75.3	76.9x75.3	92x71.6	102x85	102x85	89x71.2	102x85	102x85	92x82
Alternator Capacity (amps)	36	36	36	36	36	36	36	36	28	28	28	28	28	28	28
Fuel Capacity gal. (liters)	8.8 (33.3)	8.8 (33.3)	8.8 (33.3)	7.4 (28)	7.4 (28)	7.4 (28)	7.4 (28)	7.4 (28)	8.2 (31)	8.2 (31)	8.2 (31)	8.2 (31)	6 (22.7)	6 (22.7)	6 (22.7)
Power Steering	Electronic Power Steering (EPS)	Electronic Power Steering (EPS)	Electronic Power Steering (EPS)	Electronic Power Steering (EPS)	Electronic Power Steering (EPS)	NA	Electronic Power Steering (EPS)	NA	Electronic Power Steering (EPS)	Electronic Power Steering (EPS)	Electronic Power Steering (EPS)	NA	Electronic Power Steering (EPS)	NA	Electronic Power Steering (EPS)
Transmission	Rapid Response Clutch, Hi/Lo Range, Reverse and Park	Rapid Response Clutch, Hi/Lo Range, Reverse and Park	Rapid Response Clutch, Hi/Lo Range, Reverse and Park	Rapid Response Clutch, Hi/Lo Range, Reverse and Park	Rapid Response Clutch, Hi/Lo Range, Reverse and Park	Rapid Response Clutch, Hi/Lo Range, Reverse and Park	Rapid Response Clutch, Hi/Lo Range, Reverse and Park	Rapid Response Clutch, Hi/Lo Range, Reverse and Park	Automatic CVT with EBS, Hi/Lo Range, Reverse and Park	Automatic CVT with EBS, Hi/Lo Range, Reverse and Park	Automatic CVT with EBS, Hi/Lo Range, Reverse and Park	Automatic CVT with EBS, Hi/Lo Range, Reverse and Park	Automatic CVT with EBS Hi/Lo Range, Neutral, Reverse and Park	Automatic CVT with EBS Hi/Lo Range, Neutral, Reverse and Park	Automatic CVT with EBS Hi/Lo Range, Neutral, Reverse and Park
Drive System	2/4 WD + Electronic Front Differential Lock	2/4 WD + Electronic Front Differential Lock	2/4 WD + Electronic Front Differential Lock	2/4 WD + Electronic Front Differential Lock	2/4 WD + Electronic Front Differential Lock	2/4 WD + Electronic Front Differential Lock	2/4 WD + Electronic Front Differential Lock	2/4 WD + Electronic Front Differential Lock	2/4 WD + Electric Front Differential Lock	2/4 WD + Electronic Front Differential Lock	2/4 WD + Electronic Front Differential Lock	2/4 WD	2/4 WD + Electronic Front Differential Lock	2/4 WD + Electronic Front Differential Lock	2/4 WD + Electronic Front Differential Lock
Brakes Front / Rear	Hydraulic Disc with Dual Piston Caliper / Hydraulic Disc	Hydraulic Disc with Dual Piston Caliper / Hydraulic Disc	Hydraulic Disc with Dual Piston Caliper / Hydraulic Disc	Hydraulic Disc with Dual Piston Caliper / Hydraulic Disc	Hydraulic Disc with Dual Piston Caliper / Hydraulic Disc	Hydraulic Disc with Dual Piston Caliper / Hydraulic Disc	Hydraulic Disc with Dual Piston Caliper / Hydraulic Disc	Hydraulic Disc with Dual Piston Caliper / Hydraulic Disc	Hydraulic Disc	Hydraulic Disc	Hydraulic Disc	Hydraulic Disc	Hydraulic Disc	Hydraulic Disc	Hydraulic Disc
Front Suspension / Travel in. (cm)	Double A-Arm / 17 (43.2)	Double A-Arm / 17 (43.2)	Double A-Arm / 17 (43.2)	Double A-Arm / 12.2 (31)	Double A-Arm / 12.2 (31)	Double A-Arm / 12.2 (31)	Double A-Arm / 12.2 (31)	Double A-Arm / 12.2 (31)	Double A-Arm / 10 (25.4)	Double A-Arm / 10 (25.4)	Double A-Arm / 10 (25.4)	Double A-Arm / 10 (25.4)	Double A-Arm / 10 (25.4)	Double A-Arm / 10 (25.4)	Double A-Arm / 10 (25.4)
Rear Suspension / Travel in. (cm)	5-Link Trailing Arm / 18 (45.7)	5-Link Trailing Arm / 18 (45.7)	5-Link Trailing Arm / 18 (45.7)	Double A-Arm / 12.6 (32)	Double A-Arm / 12.6 (32)	Double A-Arm / 12.6 (32)	Double A-Arm / 12.6 (32)	Double A-Arm / 10.5 (26.7)	Double A-Arm / 10 (25.4)	Double A-Arm / 10 (25.4)	Double A-Arm / 10 (25.4)	Double A-Arm / 10 (25.4)	Double A-Arm / 10 (25.4)	Double A-Arm / 10 (25.4)	Double A-Arm / 10 (25.4)
Ground Clearance in. (cm)	13 (33)	13 (33)	13 (33)	13 (33)	13 (33)	13 (33)	13 (33)	13 (33)	10 (25.4)	10 (25.4)	10 (25.4)	10 (25.4)	11 (27.9)	11 (27.9)	11 (27.9)
Shocks	JRI ECX-1 Compression Adjustable Shocks	Elka Stage 5 Adjustable Shocks	JRI ECX-1 Compression Adjustable Shocks	Elka Stage 5 Adjustable Shocks	JRI ECX-1 Compression Adjustable Shocks	JRI ECX-1 Compression Adjustable Shocks	JRI ECX-1 Compression Adjustable Shocks	JRI ECX-1 Compression Adjustable Shocks	FOX Shocks	FOX Shocks	Coil-Over	Coil-Over	Front Coil-Over / Rear FOX FLOAT Coil-Over	Coil-Over	Coil-Over
Front Tire / Size	Duro Power Grip 27x9R14	ITP Blackwater Evolution / 27x9R14	Duro Power Grip 27x9R14	Carlisle Trail Pro / 26x8-12	Carlisle Trail Pro / 26x8-12	Carlisle Trail Pro / 26x8-12	Carlisle Trail Pro / 26x8-12	Carlisle Trail Pro / 26x8-12	Maxxis Bighorn 2.0 / 27x9R14	Duro Kaden / 26x9R14	Duro Kaden / 26x9R14	Duro Kaden / 26x9R14	Duro Kaden / 26x9R14	Duro Kaden / 26x9R14	Duro Kaden / 26x9R14
Rear Tire / Size	Duro Power Grip 27x11R14	ITP Blackwater Evolution / 27x11R14	Duro Power Grip 27x11R14	Carlisle Trail Pro / 26x10-12	Carlisle Trail Pro / 26x10-12	Carlisle Trail Pro / 26x10-12	Carlisle Trail Pro / 26x10-12	Carlisle Trail Pro / 26x10-12	Maxxis Bighorn 2.0 / 27x11R14	Duro Kaden / 26x11R14	Duro Kaden / 26x11R14	Duro Kaden / 26x11R14	Duro Kaden / 26x10-12	Duro Kaden / 26x10-12	Duro Kaden / 26x10-12
Wheels	Cast Aluminum	Cast Aluminum with Color-Matched Beadlock	Cast Aluminum	Color-Matched Aluminum	Aluminum	Steel	Aluminum	Steel	Aluminum	Aluminum	Aluminum	Aluminum	Aluminum	Powder-Coated Steel	Aluminum (Powder-Coated Steel on Camo)
Overall Size LxWxH in. (cm)	157x64x70.5 (398.8x162.6x179.1)	128x64x66.8 (325.1x162.6x169.7)	128x64x66.8 (325.1x162.6x169.7)	110.5x60x64.3 (280.7x152.4x163.3)	110.5x60x64.3 (280.7x152.4x163.3)	110.5x60x64.3 (280.7x152.4x163.3)	110.5x60x64.3 (280.7x152.4x163.3)	110.5x60x64.3 (280.7x152.4x163.3)	119.25x61x79 (302.9x154.9x200.7)	119.25x61x79 (302.9x154.9x200.7)	129x60x79 (327.7x152.4x200.7)	129x60x79 (327.7x152.4x200.7)	83.4x48.5x49.5 (211.8x123.2x125.7)	83.4x48.5x49.5 (211.8x123.2x125.7)	83.4x48.5x49.5 (211.8x123.2x125.7)
Wheelbase in. (cm)	124 (315)	95 (241.3)	95 (241.3)	84.6 (214.9)	84.6 (214.9)	84.6 (214.9)	84.6 (214.9)	84.6 (214.9)	75 (190.5)	75 (190.5)	85 (215.9)	85 (215.9)	52 (132.1)	52 (132.1)	52 (132.1)
Dry Weight lbs. (kg)	1558 (706.7)	1380 (626)	1357 (615.5)	1074 (487.2)	1061 (481.3)	1054 (478.1)	1003 (455)	996 (451.7)	1315 (596.5)	1251 (567.4)	1363 (618.2)	1363 (618.2)	750 (340.2) est.	734 (332.9) est.	750 (340.2) est.
Front/Rear Rack or Box Capacity lbs. (kg)	300 (136.1)	300 (136.1)	300 (136.1)	300 (136.1)	300 (136.1)	300 (136.1)	300 (136.1)	300 (136.1)	600 (272.2) Cargo Box / 25 (11.3) Underhood Storage	600 (272.2) Cargo Box / 25 (11.3) Underhood Storage	1000 (453.6) Cargo Box / 25 (11.3) Underhood Storage	600 (272.2) Cargo Box / 25 (11.3) Underhood Storage	100 (45.4) / 200 (90.7)	100 (45.4) / 200 (90.7)	100 (45.4) / 200 (90.7)
Towing Capacity lbs. (kg)	NA	NA	NA	1500 (680.4)	1500 (680.4)	1500 (680.4)	1500 (680.4)	1500 (680.4)	1500 (680.4)	1500 (680.4)	1500 (680.4)	1500 (680.4)	1050 (476.3)	1050 (476.3)	1050 (476.3)
Hitch Type	NA	NA	NA	Rear 2" Receiver	Rear 2" Receiver	Rear 2" Receiver	Rear 2" Receiver	Rear 2" Receiver	Rear 2" Receiver	Rear 2" Receiver	Rear 2" Receiver	Rear 2" Receiver	Rear 2" Receiver	Rear 2" Receiver	Rear 2" Receiver
Instrumentation	Analog/Digital	Analog/Digital	Analog/Digital	Digital	Digital	Digital	Digital	Digital	Digital	Digital	Digital	Digital	Digital	Digital	Digital
Lighting	Dual LED Headlights and Taillights	Dual LED Headlights and Taillights	Dual LED Headlights and Taillights	Halogen Headlights / LED Brake Lights and Taillights	Halogen Headlights / LED Brake Lights and Taillights	Halogen Headlights / LED Brake Lights and Taillights	Halogen Headlights / LED Brake Lights and Taillights	Halogen Headlights / LED Brake Lights and Taillights	Dual Halogen Headlights w/LED Light Bar / Rear Halogen Taillight	Dual Halogen Headlights w/LED Light Bar / Rear Halogen Taillight	Dual Halogen Headlights w/LED Light Bar / Rear Halogen Taillight	Dual Halogen Headlights w/LED Light Bar / Rear Halogen Taillight	Dual Halogen w/LED Accent Headlights / Dual Rear LED Taillights	Dual Halogen Headlights / Dual Rear LED Taillights	Dual Halogen w/LED Accent Headlights / Dual Rear LED Taillights
Available Colors	White Metallic Paint	Matte Black Paint	White Metallic Paint, Viper Blue Paint, Vibrant Red Paint	Black Metallic Paint	Team Arctic Green Paint	Classic Red	Team Arctic Green Paint, Vibrant Red Paint	Lime Green, Classic Red	Black	Team Arctic Green, Black	Team Arctic Green, Black, True Timber Camo	Fire Red	White Metallic, True Timber Camo	Classic Red	Black Metallic, True Timber Camo
Infinitely Adjustable Tilt Steering	Standard	Standard	Standard	Standard	Standard	Standard	Standard	Standard	Standard	Standard	Standard	Standard	NA	NA	NA
Racks	NA	NA	NA	NA	NA	NA	NA	NA	NA	NA	NA	NA	Front and Rear SpeedRack II	Front and Rear SpeedRack II	Front and Rear SpeedRack II
Additional Features	Automotive-Style Paint, Backup Lights, Color-Matched Suspension Arms, Half Doors, 300-lb. Capacity Rear Cargo Box, Race-Inspired Highback Seats, 1.04-Gallon Glove Box Storage	Automotive-Style Paint, Backup Lights, Front and Rear Aluminum Bumpers, Color-Matched Suspension Arms, Full Doors, One-Piece Molded Roof, 300-lb. Capacity Rear Cargo Box, Race-Inspired Highback Seats, 1.04-Gallon Glove Box Storage	Automotive-Style Paint, Backup Lights, Color-Matched Suspension Arms, Half Doors, 300-lb. Capacity Rear Cargo Box, Race-Inspired Highback Seats, 1.23-Gallon Glove Box Storage	Automotive-Style Paint, Color-Matched Suspension Arms, Full Doors, 300-lb. Capacity Rear Cargo Box, Race-Inspired Highback Seats, 1.23-Gallon Glove Box Storage, Rear Sway Bar	Automotive-Style Paint, Color-Matched Suspension Arms, Half Doors, 300-lb. Capacity Rear Cargo Box, Race-Inspired Highback Seats, 1.23-Gallon Glove Box Storage, Rear Sway Bar	Half Doors, 300-lb. Capacity Rear Cargo Box, Race-Inspired Highback Seats, 1.23-Gallon Glove Box Storage, Rear Sway Bar	Automotive-Style Paint, Color-Matched Suspension Arms, Half Doors, 300-lb. Capacity Rear Cargo Box, Race-Inspired Highback Seats, 1.23-Gallon Glove Box Storage, Front and Rear Sway Bar	Half Doors, 300-lb. Capacity Rear Cargo Box, Race-Inspired Highback Seats, 1.23-Gallon Glove Box Storage, Front and Rear Sway Bar	Automotive-Style Latching Hood, Center Rubber Dash Compartment, Dashboard Shift Lever with Park, Side Restraint Nets, Front Tow Hook, High-Quality Surlin Body Panels, Tilting 600-lb. Capacity Rear Cargo Box, Rearview Mirror, Bucket Seats, 22-Gallon Water-Resistant Underhood Storage, 1.9-Gallon Glove Box Storage, Sway Bar, Tie-Down Hooks	Automotive-Style Latching Hood, Center Rubber Dash Compartment, Dashboard Shift Lever with Park, Side Restraint Nets, Front Tow Hook, High-Quality Surlin Body Panels, Tilting 600-lb. Capacity Rear Cargo Box, Rearview Mirror, Bucket Seats, 22-Gallon Water-Resistant Underhood Storage, 1.9-Gallon Glove Box Storage, Sway Bar, Tie-Down Hooks	Automotive-Style Latching Hood, Center Rubber Dash Compartment, Dashboard Shift Lever with Park, Side Restraint Nets, Front Tow Hook, High-Quality Surlin Body Panels, Tilting 600-lb. Capacity Rear Cargo Box, Rearview Mirror, Bucket Seats, 22-Gallon Water-Resistant Underhood Storage, 1.9-Gallon Glove Box Storage, Sway Bar, Tie-Down Hooks	Automotive-Style Latching Hood, Center Rubber Dash Compartment, Dashboard Shift Lever with Park, Side Restraint Nets, Front Tow Hook, High-Quality Surlin Body Panels, Tilting 600-lb. Capacity Rear Cargo Box, Rearview Mirror, Bucket Seats, 22-Gallon Water-Resistant Underhood Storage, 1.9-Gallon Glove Box Storage, Sway Bar, Tie-Down Hooks	Automotive-Style Paint, 1.44-Gallon Water-Resistant Rear Storage, Sway Bar	1.44-Gallon Water-Resistant Rear Storage, Sway Bar	Automotive-Style Paint, Single Seat, 1.44-Gallon Water-Resistant Rear Storage, Sway Bar

2016

SPECIFICATIONS



	ALTERRA				1000	TBX	MudPro	XC	500	300	YOUTH		
	Alterra 550	Alterra 500 XT EPS	Alterra 450	Alterra 400	1000 XT EPS	TBX 700 EPS	MudPro 700 limited EPS	XC 450	500	300	150	90	DVX 90
Engine Displacement (cc), Engine Type	545, SOHC, 4-Stroke, 4-Valve w/EFI	443, SOHC, 4-Stroke, 4-Valve w/EFI	443 SOHC, 4-Stroke, 4-Valve w/EFI	366, SOHC, 4-Stroke, 4-Valve	951, SOHC, 4-Stroke, 4-Valve w/EFI	695, SOHC, 4-Stroke, 4-Valve w/EFI	695, SOHC, 4-Stroke, 4-Valve w/EFI	443, SOHC, 4-Stroke, 4-Valve w/EFI	443, SOHC, 4-Stroke, 4-Valve w/EFI	270, SOHC, 4-Stroke, 4-Valve	149, SOHC, 4-Stroke, 2-Valve	90, SOHC, 4-Stroke, 2-Valve	90, SOHC, 4-Stroke, 2-Valve
Cooling System	Liquid with Fan	Liquid with Fan	Liquid with Fan	Air/Oil Cooled	Liquid with Fan	Liquid with Fan	Liquid with Fan	Liquid with Fan	Liquid with Fan	Liquid with Fan	Air	Air	Air
Bore & Stroke (mm)	92x82	89x71.2	89x71.2	81x71.2	92x71.6	102x85	102x85	89x71.2	89x71.2	72.7x65.2	62x49.5	47x51.8	47x51.8
Alternator Capacity (amps)	28	23	23	23	28	28	28	23	23	12.5	12.5	NA	NA
Fuel Capacity gal. (liters)	6 (22.7)	6 (22.7)	4.3 (16.3)	4.3 (16.3)	5.7 (21.6)	5.8 (22)	5.7 (21.6)	4.3 (16.3)	5.7 (21.6)	3.3 (12.5)	2.3 (8.7)	1.5 (5.7)	1.5 (5.7)
Power Steering	NA	Electronic Power Steering (EPS)	NA	NA	Electronic Power Steering (EPS)	Electronic Power Steering (EPS)	Electronic Power Steering (EPS)	NA	NA	NA	NA	NA	NA
Transmission	Automatic CVT with EBS Hi/Lo Range, Neutral, Reverse and Park	Automatic CVT with EBS Hi/Lo Range, Neutral, Reverse and Park	Automatic CVT with EBS Hi/Lo Range, Neutral and Reverse	Automatic CVT with EBS Hi/Lo Range, Neutral and Reverse	Automatic CVT with EBS Hi/Lo Range, Neutral, Reverse and Park	Automatic CVT with EBS Hi/Lo Range, Neutral, Reverse and Park	Automatic CVT with EBS Hi/Lo Range, Neutral, Reverse and Park	Automatic CVT with EBS Hi/Lo Range, Neutral and Reverse	Automatic CVT with EBS Hi/Lo Range, Neutral, Reverse and Park	Automatic CVT with Hi/Lo, Neutral and Reverse	Automatic CVT with Forward, Neutral and Reverse	Automatic CVT with Forward, Neutral and Reverse	Automatic CVT with Forward, Neutral and Reverse
Drive System	2/4 WD + Electronic Front Differential Lock	2/4 WD + Electronic Front Differential Lock	2/4 WD Electric	2/4 WD Electric	2/4 WD + Electronic Front Differential Lock	2/4 WD + Electronic Front Differential Lock	2/4 WD + Electronic Front Differential Lock	2/4 WD Electric	2/4 WD + Electronic Front Differential Lock	2 WD	2 WD	2 WD	2 WD
Brakes Front / Rear	Hydraulic Disc	Hydraulic Disc	Hydraulic Disc	Hydraulic Disc	Hydraulic Disc	Hydraulic Disc	Hydraulic Disc	Hydraulic Disc	Hydraulic Disc	Hydraulic Disc	Drum / Hydraulic Disc	Drum / Hydraulic Disc	Drum / Hydraulic Disc
Front Suspension / Travel in. (cm)	Double A-Arm / 10 (25.4)	Double A-Arm / 10 (25.4)	Double A-Arm / 7 (17.8)	Double A-Arm / 7 (17.8)	Double A-Arm / 10 (25.4)	Double A-Arm / 10 (25.4)	Double A-Arm / 10 (25.4)	Double A-Arm / 7 (17.8)	Double A-Arm / 10 (25.4)	Double A-Arm / 5 (12.7)	Single A-Arm / 3.5 (8.9)	Single A-Arm / 2.8 (7.1)	Single A-Arm / 2.8 (7.1)
Rear Suspension / Travel in. (cm)	Double A-Arm / 10 (25.4)	Double A-Arm / 10 (25.4)	Double A-Arm / 7 (17.8)	Double A-Arm / 7 (17.8)	Double A-Arm / 10 (25.4)	Double A-Arm / 10 (25.4)	Double A-Arm / 10 (25.4)	Double A-Arm / 7 (17.8)	Double A-Arm / 10 (25.4)	Swing Arm / 5 (12.7)	Swing Arm / 3.5 (8.9)	Swing Arm / 2.9 (7.4)	Swing Arm / 2.9 (7.4)
Ground Clearance in. (cm)	11 (27.9)	11 (27.9)	10 (25.4)	10 (25.4)	11 (27.9)	11 (27.9)	14 (35.6)	10 (25.4)	11 (27.9)	10.2 (25.9)	7.5 (19.1)	7.25 (18.4)	7.25 (18.4)
Shocks	Coil-Over	Coil-Over	Coil-Over	Coil-Over	Coil-Over	Coil-Over	Coil-Over	Coil-Over	Coil-Over	Coil-Over	Coil-Over	Coil-Over	Coil-Over
Front Tire / Size	Duro Kaden / 25x8-12	Duro Kaden / 25x8-12	Kenda Pathfinder / 25x8-12	Kenda Pathfinder / 24x8-12	Maxxis Bighorn 2.0 / 25x9-12	Duro 3 Star Kaden / 25x8-12	Maxxis Zilla / 28x9R14	Maxxis MS10K / 23x8-12	Duro Kaden / 25x8-12	Kenda Pathfinder / 22x7-10	Kenda Pathfinder / 21x7-10	Kenda / 20x7-8	Kenda / 20x7-8
Rear Tire / Size	Duro Kaden / 25x10-12	Duro Kaden / 25x10-12	Kenda Pathfinder / 25x10-12	Kenda Pathfinder / 24x10-12	Maxxis Bighorn 2.0 / 25x11-12	Duro 3 Star Kaden / 25x10-12	Maxxis Zilla / 28x11R14	Maxxis MS10K / 23x10-12	Duro Kaden / 25x10-12	Kenda Pathfinder / 22x10-10	Kenda Pathfinder / 22x10-10	Kenda / 19x8-8	Kenda / 19x8-8
Wheels	Powder-Coated Steel	Aluminum	Powder-Coated Steel	Powder-Coated Steel	Aluminum	Powder-Coated Steel	Aluminum Color-Matched Beadlock	Aluminum	Powder-Coated Steel	Powder-Coated Steel	Powder-Coated Steel	Powder-Coated Steel	Powder-Coated Steel
Overall Size LxWxH in. (cm)	83.4x48.5x49.5 (211.8x123.2x125.7)	83.4x48.5x49.5 (211.8x123.2x125.7)	84.3x45x46.8 (214.1x114.3x118.9)	84.3x45x46.8 (214.1x114.3x118.9)	84.8x47.5x48 (215.4x120.7x121.9)	98x47.5x48 (248.9x120.7x121.9)	86.5x47.5x51.8 (219.7x120.7x131.6)	73.3x47.5x46.8 (186.2x120.7x118.9)	84.8x47.5x48 (215.4x120.7x121.9)	73.6x41.4x44 (186.9x105.2x111.8)	69.9x37.4x40.9 (177.5x95x103.9)	57.8x34.5x37.9 (146.8x87.6x96.3)	57.8x34.5x37.9 (146.8x87.6x96.3)
Wheelbase in. (cm)	52 (132.1)	52 (132.1)	48 (121.9)	48 (121.9)	52 (132.1)	58 (147.3)	50 (127)	48 (121.9)	50 (127)	46.4 (117.9)	43.9 (111.5)	38.4 (97.5)	38.4 (97.5)
Dry Weight lbs. (kg)	734 (332.9) est.	750 (340.2) est.	615 (279.1)	603 (273.6)	772 (350.2)	788 (357.4)	800 (362.9)	600 (272.2)	660 (299.4)	477 (216.4)	386 (175.1)	265 (120.2)	260 (117.9)
Front/Rear Rack or Box Capacity lbs. (kg)	100 (45.4) / 200 (90.7)	100 (45.4) / 200 (90.7)	75 (34) / 150 (68)	75 (34) / 150 (68)	100 (45.4) / 200 (90.7)	100 (45.4) / 300 (136.1)	100 (45.4) / 200 (90.7)	0	100 (45.4) / 200 (90.7)	50 (22.7) / 100 (45.4)	25 (11.3) / 50 (22.7)	10 (4.5) / 15 (6.8)	0
Towing Capacity lbs. (kg)	1050 (476.3)	1050 (476.3)	1050 (476.3)	1050 (476.3)	1050 (476.3)	1050 (476.3)	1050 (476.3)	1050 (476.3)	1050 (476.3)	500 (226.8)	300 (136.1)	0	0
Hitch Type	Rear 2" Receiver	Rear 2" Receiver	Rear 2" Receiver	Rear 2" Receiver	Rear 2" Receiver	Rear 2" Receiver	Rear 2" Receiver	Rear 2" Receiver	Rear 2" Receiver	Flat Plate with Hole	Flat Plate with Hole	None	None
Instrumentation	Digital	Digital	Digital	Digital	Digital	Digital	Analog/Digital	Digital	Digital	Digital	Digital	Neutral/Reverse LED	Neutral/Reverse LED
Lighting	Dual Halogen Headlights / Dual Rear LED Taillights	Dual Halogen w/LED Accent Headlights / Dual Rear LED Taillights	Dual Halogen Headlights / Dual Rear Taillights	Dual Halogen Headlights / Dual Rear Taillights	Dual Halogen Headlights / Single Rear Taillight	Dual Halogen Headlights / Single Rear Taillight	Dual Halogen Headlights / Single Rear Taillight	Dual Headlights / Dual Rear Taillights	Dual Halogen Headlights / Single Rear Taillight	Dual Halogen Headlights / Single Rear Taillight	Dual Halogen Headlights / Single Rear Taillight	Dual Headlights / Single Rear Taillight	Single Headlight / Single Rear Taillight
Available Colors	Classic Red	White Metallic, Black Metallic	Forest Green, Classic Red	Forest Green, Classic Red	Team Arctic Green Paint	Classic Red	Matte Black Paint	White	Forest Green, Classic Red	Lime Green	Lime Green	Classic Red	White
Infinitely Adjustable Tilt Steering	NA	NA	NA	NA	NA	NA	NA	NA	NA	NA	NA	NA	NA
Racks	Front and Rear SpeedRack II	Front and Rear SpeedRack II	Front and Rear Impact-Resistant	Front and Rear Impact-Resistant	Front and Rear SpeedRack	Front SpeedRack	Front and Rear SpeedRack	NA	Front and Rear SpeedRack	Front and Rear Steel Racks	Front and Rear Steel Racks	Front and Rear Steel Racks	NA
Additional Features	1.44-Gallon Water-Resistant Rear Storage, Sway Bar	Automotive-Style Paint, 1.44-Gallon Water-Resistant Rear Storage, Sway Bar	NA	NA	Automotive-Style Paint	Tilting 100-lb. Capacity Rear Cargo Box	Automotive-Style Paint, Heavy-Duty Front and Rear Bumpers, Snorkel Air Intake, Arctic Cat/WARN 3,000-lb. Winch	Automotive-Style Paint, Back Up Lights, Front Bumper, Sway Bar	Sway Bar	NA	NA	Safety Flag	Safety Flag