

SIEMENS



siemens.com/simatic-it

SIMATIC IT: MES and beyond

Adapting manufacturing operations to variable markets

Dynamic markets with increasing demand variation, raising prices of energy and raw materials, quality and environmental regulations, **place significant challenges upon manufacturers.**

If they want to compete in the market, they are forced to **achieve the highest level of resilience** in global operations, while at the same time maintaining cost efficiency, quality and speed.

This is possible at the single plant level – or at the enterprise level, where companies are organizing **networks of plants with varying capabilities.**

It takes **an innovative vision** on implementing and managing manufacturing IT in general, and Manufacturing Execution Systems in particular.

The application of integrated manufacturing strategies will help realize manufacturing responsiveness

The crucial role of an INTEGRATED system

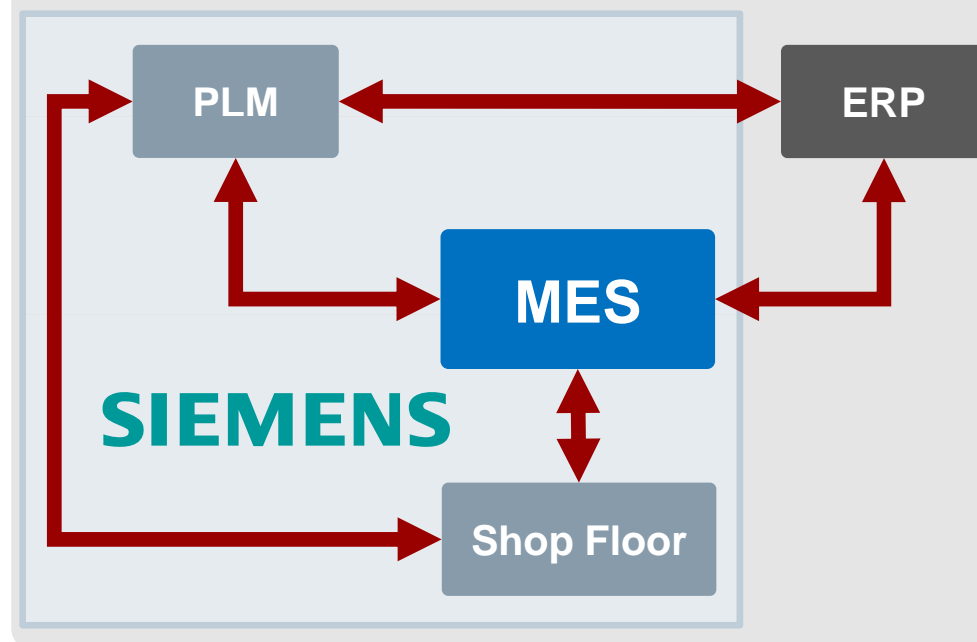
Product Development (PLM), Business Management (ERP) and Execution (MES and Automation) must work together

The Strategic needs of Manufacturers

- Make-to-Individual
- Reduce global Time-to-Market
- Increase productivity and optimize costs in the plant
- Support Global Plants
- Provide visibility to all levels within the Supply-Chain
- Standardize business processes to let the system provide higher quality

The MES role:

One full Closed-Loop Integration between PLM, ERP, MES and Shop Floor



SIEMENS is in a unique position to support these INTEGRATION requirements

Industry Automation Division – A leading position in automation technology and industrial software

Industry Sector – Industry Automation Division

Industrial Automation Systems (AS)



- SIMATIC S7 (PLC)
- SIMATIC PCS 7
- SIMATIC IPC
- SIMATIC HMI
- **SIMATIC IT (MES)**
- Digital Engineering
- Solutions Factory & Process Aut.

Sensors and Communications (SC)



- Process Instrumentation
- Process Analytics
- Industrial Identification
- Industrial Communication
- SITOP Power Supplies

Control Components & Systems Engineering (CE)



- SIRIUS Control Components
- SIPLUS Customized Solutions
- SINVERT Photovoltaic's

PLM Software (PL)



- Digital Product Development (NX)
- Digital Manufacturing (Tecnomatix)
- Collaborative Data Management (Teamcenter)

Water Technologies (WT)



- Industrial Solutions
- Municipal Solutions
- Health Science Solutions
- Aquatics and Leisure Solutions

Industry Automation's Portfolio – Full support for the entire production workflow

Manufacturing Industries



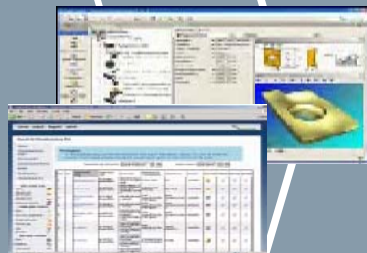
Process Industries



Life Sciences Industries



MES



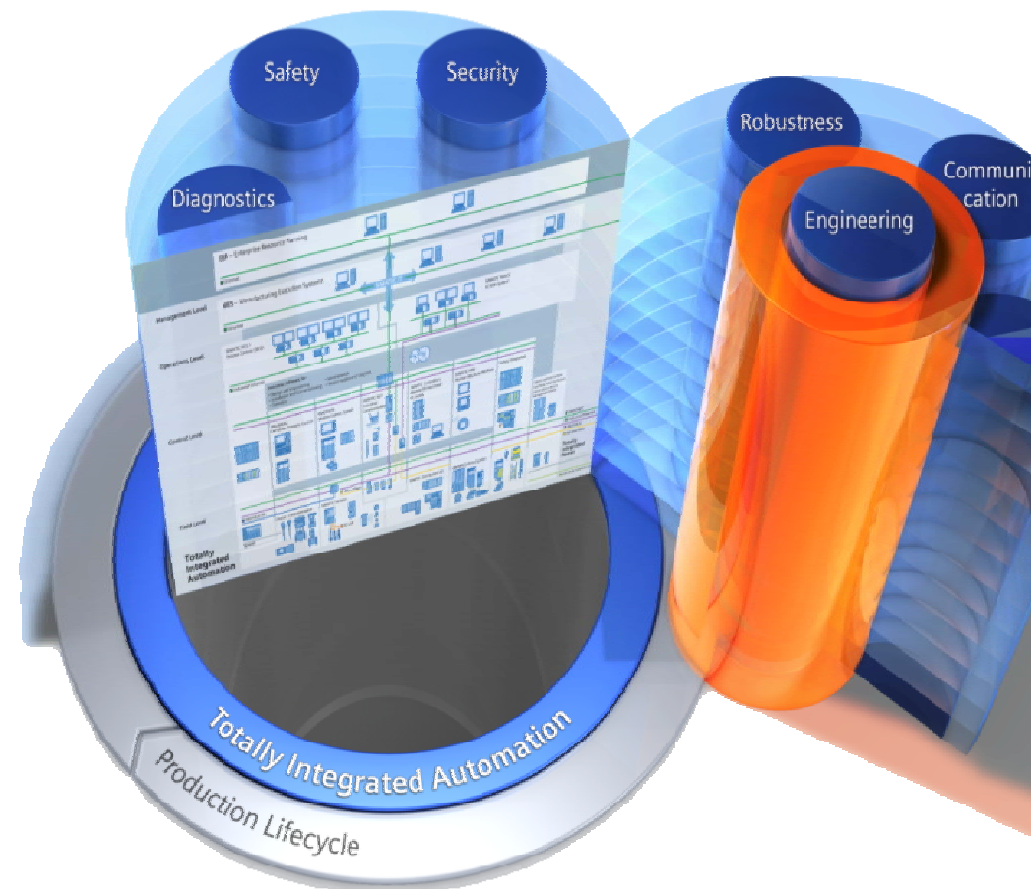
**Product
Design/Engineering**

Production


MRO

Product meets Production


- Siemens portfolio covers the whole chain from Product Lifecycle Management to Manufacturing Execution to Automation
- Such a powerful portfolio allows Siemens customers to enable a seamless information flow from Engineering to Execution and back
- It provides the Strategic Infrastructure to enable Manufacturers to achieve concrete benefits in all aspects of the Manufacturing process from Design to Delivery



Siemens Industry Software for MES today: SIMATIC IT Portfolio



Production Suite
Production management and execution



R&D Suite
Integrating R&D and manufacturing processes, workflows and data



Intelligence Suite
Real-time data monitoring and historical data collection in a unified environment

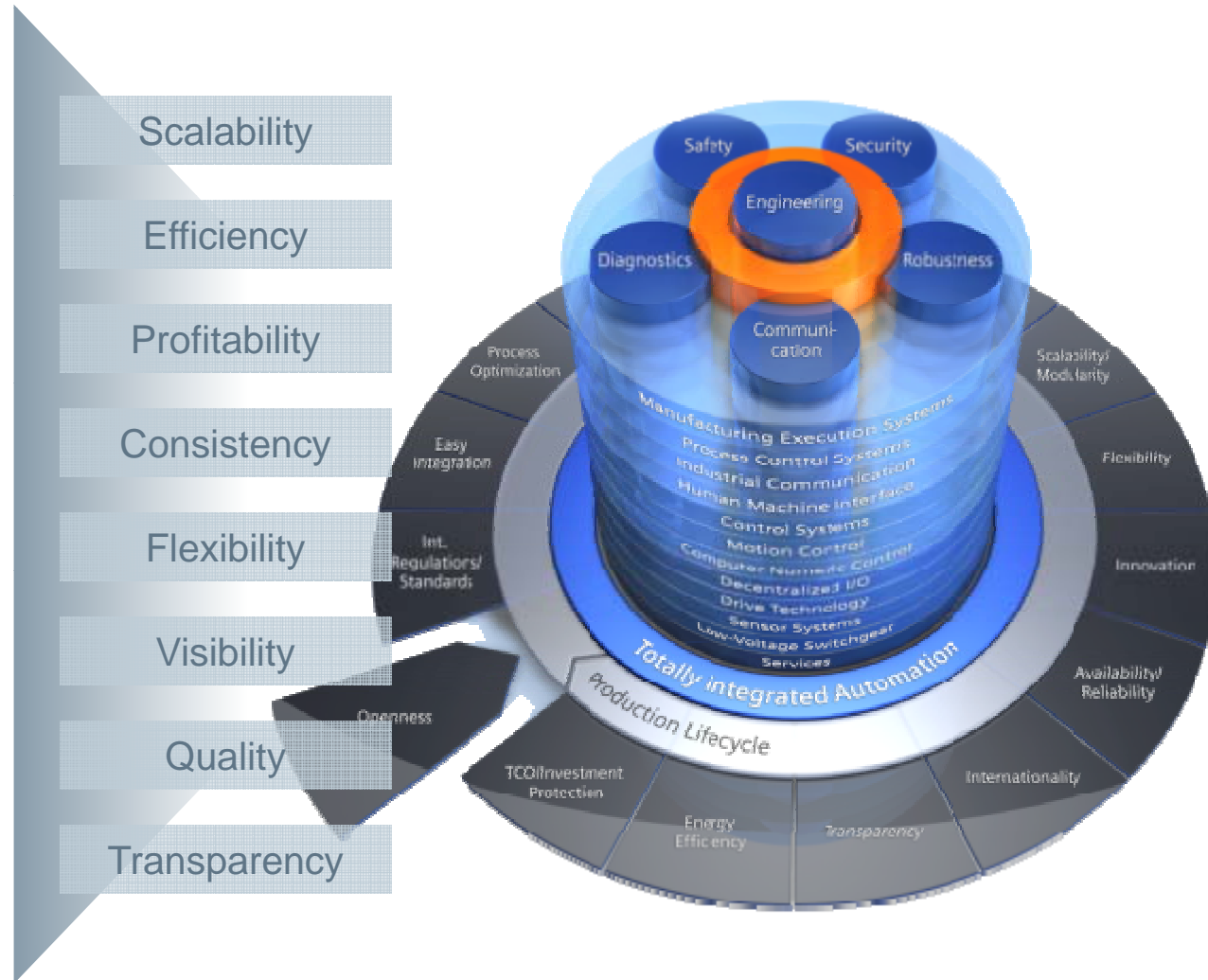


Industry Libraries

- Discrete Manufacturing
- Process Industry
- Life Sciences Industry



Value Added Services
A broad concept of Customer Care



Key Features

- ISA-95 as Siemens MES Standard
- Cross industry standard software
- Flexible and Scalable
- True ERP collaboration through interoperability
- Lower cost of ownership
- Fast to roll-out
- Secure existing investments
- Easier compliance with regulations
- Totally integrated in the Siemens offering for automation, from the machine to the corporate level



SIMATIC IT offers significant benefits improving manufacturing operations

Customer Benefits

- **Optimized processes and integration**
→ Shorter time to first revenue
- **Optimized Production, Quality, Inventory and Asset performance**
→ make your plant the strongest link in the Supply Chain
- **Integrate the production operations into the business and into R&D/Engineering operations**
→ maximum collaboration between organizations and systems
- **Information visibility at every level**
→ Real-time evaluation capabilities to drive performance, enable innovation efficiency and enforce brand value
- **Facilitate application roll-out to several plants**
→ fast ROI and low TCO



Contacts



*For more information, please, visit
our website:*

www.siemens.com/simatic-it

For more information, please

contact:

marketing.simatic-it@siemens.com

siemens.com/mesmarketplace