

User's Guide
Siglos Karaoke
Professional

© 2020 Doblón

Contents

Chapter 1	1 Introduction
	2 Professional mode
	2 Quick start
	10 Song database
	15 Adding singers
	18 Playback management
	22 Fill-in playlist
	23 Remote access
	32 Basic mode
	32 Quick start (basic mode)
	34 Playing
	37 Recording
	41 Using playlists
	43 Main window controls
	43 Getting karaoke songs
	44 Settings
	44 Display
	45 Recording
	46 CD
	46 General
	46 Skins
	46 KJ
	50 Keyboard shortcuts
	50 Supported file types
	51 Troubleshooting
	52 Unlocking and evaluation

Thank you for choosing Siglos Karaoke Professional.



Siglos Karaoke Professional is a karaoke show manager that allows you to keep song database, and helps to run karaoke shows by the means managing singers, songs, and rotation. Siglos Karaoke Professional is also an advanced karaoke player that can play karaoke songs in various formats (including CD+G and MIDI Karaoke) and record your voice while you sing along.

The program has two modes of operation -- professional and basic. Professional mode should be used when running a show, while basic mode is for everyday use. To switch the mode go to **Settings** dialog box, select **KJ** section, and change **Use professional KJ mode** option.

Siglos Karaoke Professional has been designed to be as simple as possible -- it uses graphical interface that any computer user should be familiar with. To learn more about Siglos Karaoke Professional features select one of the topics below:

Professional mode:

- Quick start

- Song database

- Adding singers

- Playback management

- Fill-in playlist

Basic mode:

- Quick start

- Playing karaoke songs

- Recording your singing

- Using playlists

Common topics:

- Main window controls

- Adjusting settings

Keyboard shortcuts

Troubleshooting

Unlocking and evaluation

Professional mode

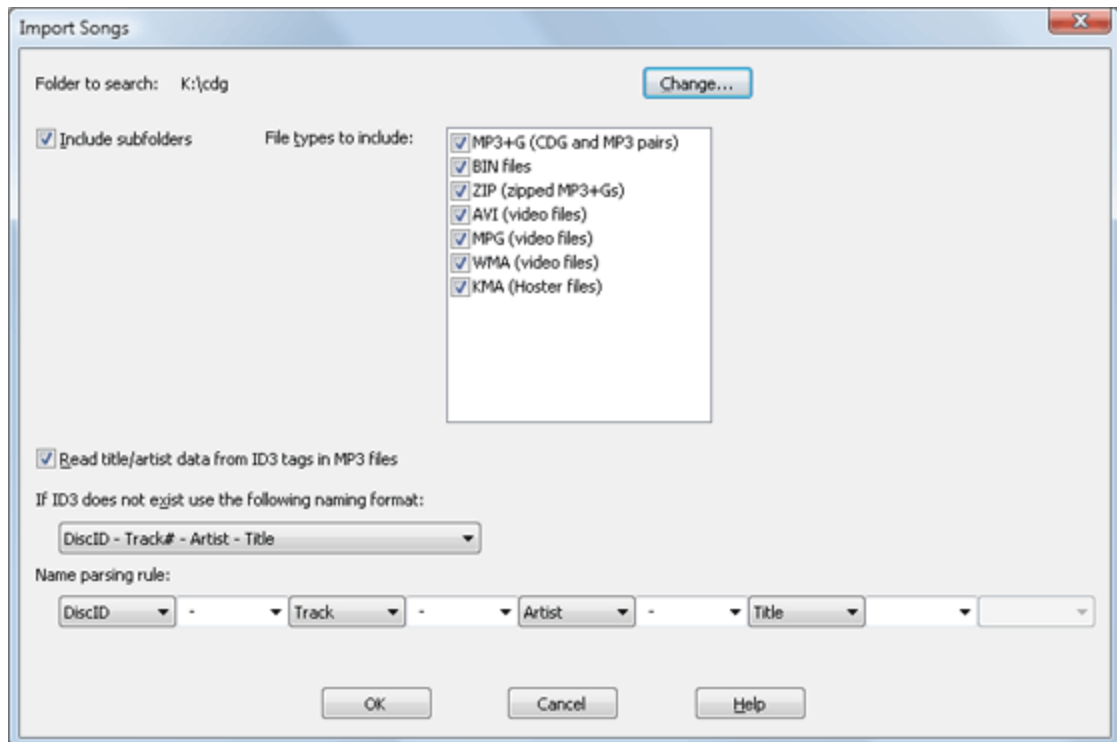
Quick start

Importing songs

The first thing you need to do before you use Siglos Karaoke Professional to run your karaoke show is creating a database of songs. The database contains the list of songs on your hard disc, allowing finding the songs you need in a lightning fast manner. It also allows Siglos Karaoke Professional to keep track of the songs sung by singers.

To create the song database you need to have the songs saved on your hard disc. If you do not have songs on the hard disc, but rather on CD+G discs, we recommend Power CD+G Burner to convert your discs into digital format.

To start the import process select **Manage database** button on the playlist window, and then choose **Import songs**. You may also choose **Import songs** command from **File** menu.



First you need to select the root of your song collection (use **Change** button to do this). Then select file types you would like to import (see Supported file types for the list of supported formats). **Include subfolders** allows to scan all folders starting from the root folder. Switch it off if you want to scan a single folder only.

Siglos Karaoke Professional scans MP3 files it finds for ID3 tags containing song title and artist name (it also reads ID3 tags of MP3 files inside ZIP files, but it may significantly slow down the performance and is

not recommended). If ID3 tag is not found, a parsing rule is applied to the file name. You may select a predefined rule or create a custom one. It is possible to use one of the four data fields (**Artist**, **Title**, **DiscID**, and **Track**). Choosing **Ignore** will cause the parser to ignore this part of the file name.

Import rule example

If your song collection is named as this example:

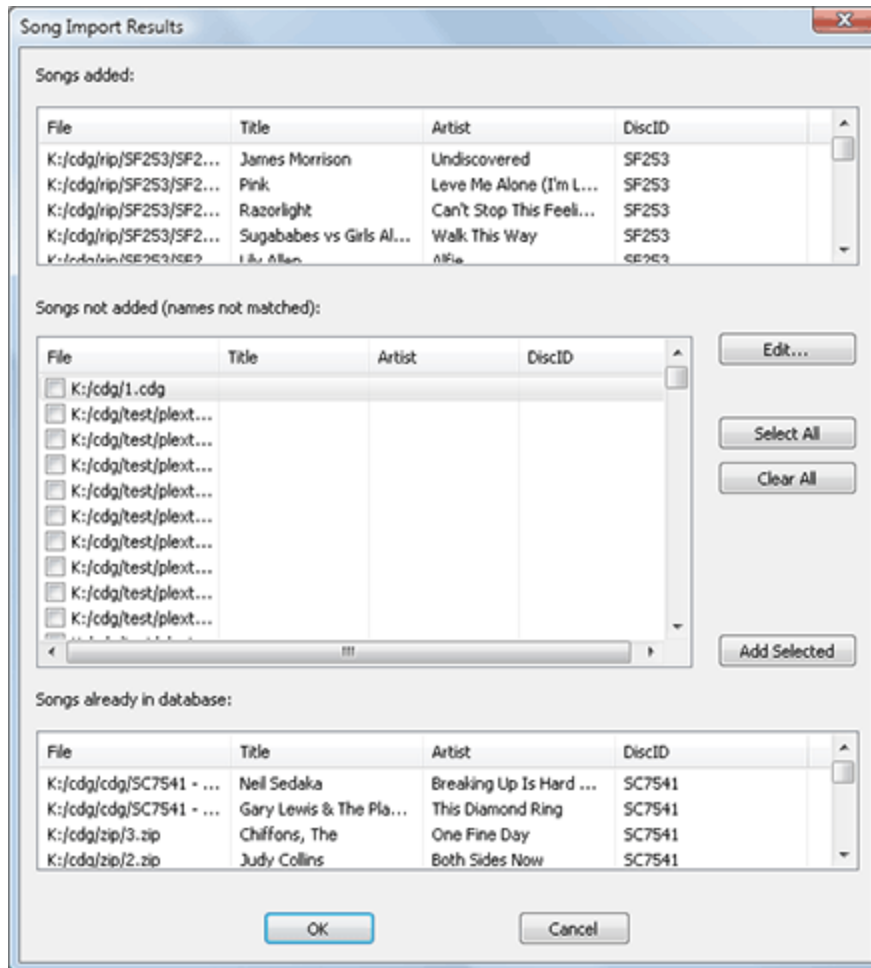
```
SC7541_02 - Gary Lewis & The Playboys - This Diamond Ring.cdg
```

you need to select the following rule:

```
DiscID_Track - Artist - Title
```

The first separator should be '' (underline), and following separators should be set to ' - ' (minus with spaces before and after).

Once you are done setting the import rule, select **OK**. Siglos Karaoke Professional will scan your disc (it may take a while for large collection of songs) and will report its findings in **Song Import Results** dialog box.

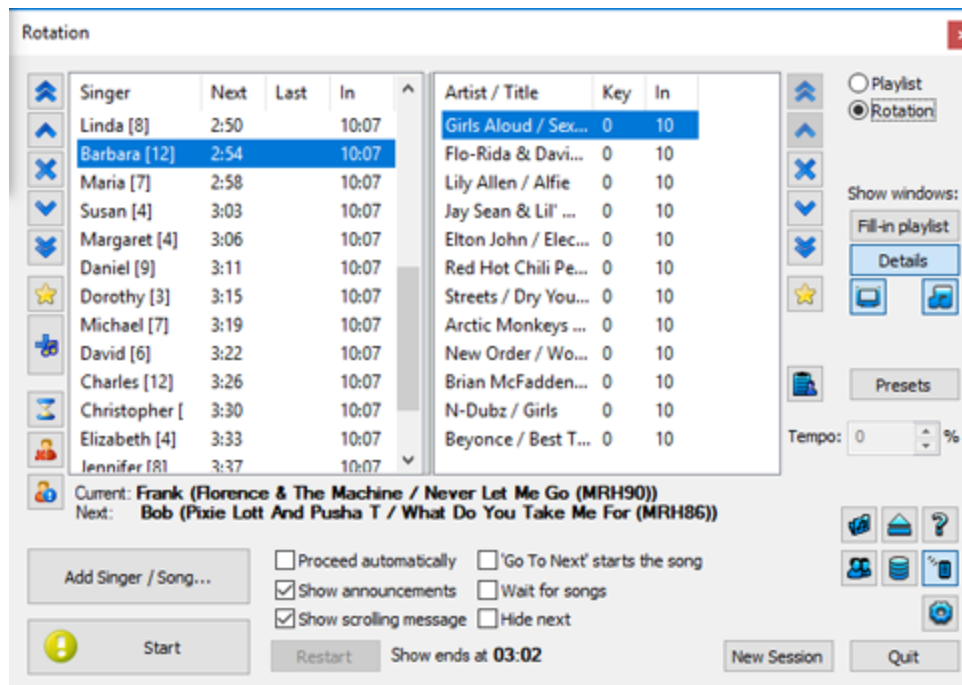


Song Import Result dialog box contains all files Siglos Karaoke Professional has found, divided into three groups. First list contains files that either contained ID3 tags, or matched the parsing rule, and were successfully imported into the database. The second list contains the files that matched the file extension, but did not have ID3 tags, nor their names matched the parsing rule. The third list contains files already in the database.

You may manually edit songs that were not matched -- to do this select the song you would like to edit, and then click **Edit** button. To add edited songs do the database click **Add Selected** button. Once you are done editing select **OK**. You will return to **Song Database** dialog box, which allows you to view and edit all songs currently in the database. Once you are done click **OK**.

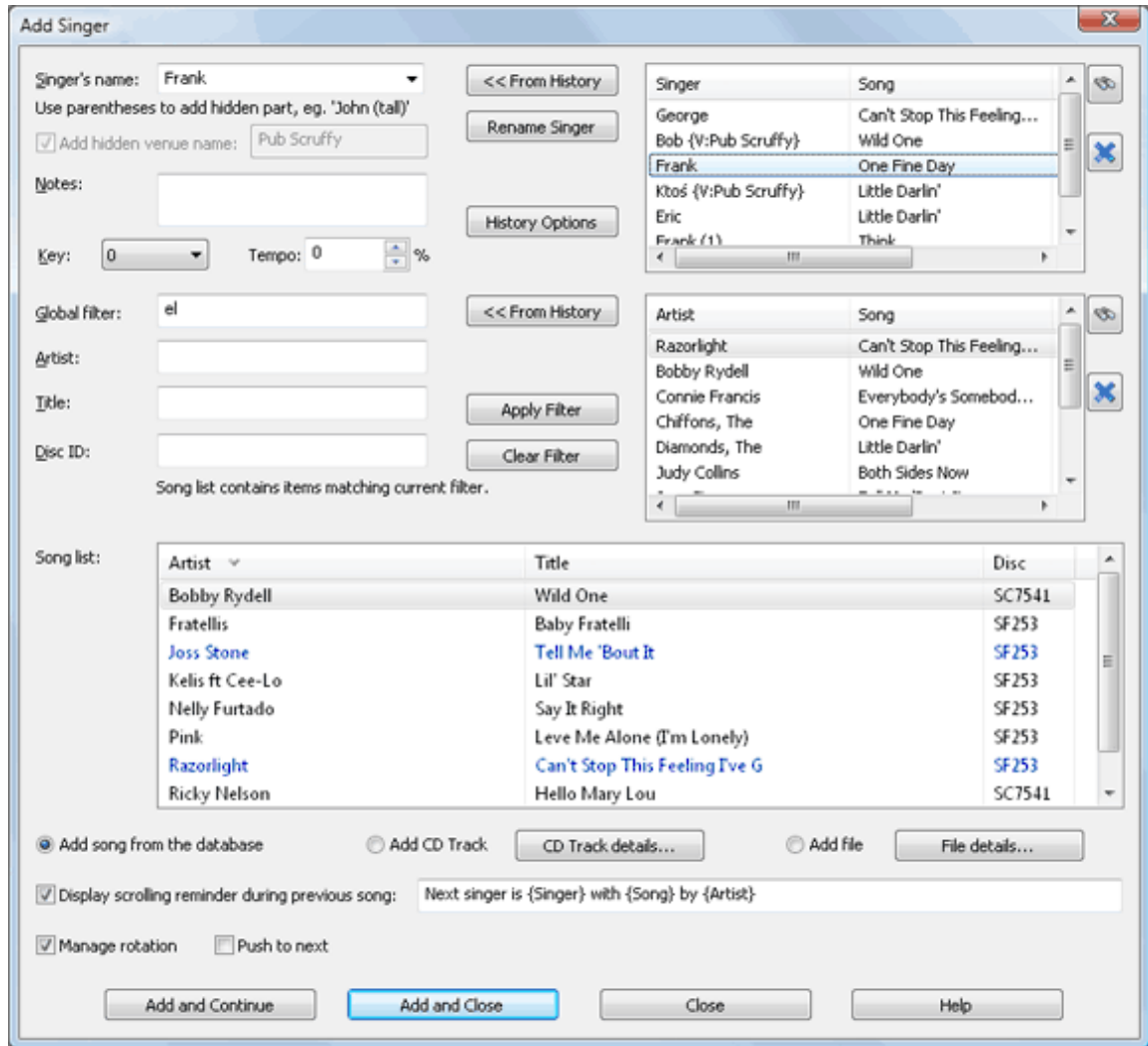
Adding singers and playing songs

The main part of the Siglos Karaoke Professional is the playlist window. By default it works in rotation mode -- it allows to manage the list of singers and songs, add new singers to the rotation, and start the playback of the song.



The next step is to add the singer to the rotation.

To add the singer to the playlist select **Add Singer** button on the playlist window or choose **Add singer/song** command from **File** menu. **Add Singer** dialog box will be displayed.



Choosing the singer

First you need to select the singer. If you would like to use the singer that already is in the rotation, select it from the drop-down list. If you are adding a new singer, type the name into **Singer's name**.

If you enter the name of the new singer that already is listed in the database, Siglos Karaoke Professional will display warning and will prompt you to choose one of the possible actions:

- **Add hidden description in parentheses** will create a new singer name by adding hidden number to the name (the number will be visible to you only, your audience will not see it)
- **Use different name** allows you to select the different name for the singer
- **Add new singer** of the same name will add a new singer with the same name as the one in the database
- **Use the last singer of the same name from the database** will invoke the last singer of the same name from the database

It is also possible to add to the name extra description in parentheses (eg. John (Smith)). The part of the name in parentheses will not be visible to the audience, it is for your use only. You may also add extra notes about the singer in **Notes** field.

Siglos Karaoke Professional allows you to tag the singers by venue name. To this check **Add hidden venue name** option and type the name of the venue into the edit box. With this option enabled Siglos

Karaoke Professional will add hidden {v:Name} field to the singer name. You may later choose to display only singers from the same venue (to do this check **Show from current venue only** option in **History Options**).

If the singer requires non-standard song key, select it in the **Key** list. It is possible to change the key 12 tones lower or higher, but using values larger than 5 may cause sound quality degradation.

You may also modify the tempo of the song -- the range is from -100% (it is twice as slow) to +100% (twice as fast).

If you have added singers in the past, the list next to **Singer's name** will contain singers and songs they sung -- to quickly select the singer double-click appropriate item on the list (or single-click it and then select **From History** button). Selecting a singer from the history will fill **Song list** with the list of the songs sung by the singer in the past. Both song list and history list can be expanded and searched, using the search button next to them.

Once you have chosen the singer, it is time to choose the song

Note: you may skip selecting the singer step -- if you do this singer field will be blank

Selecting song

Siglos Karaoke Professional allows to search the song database using multiple field matching. You may use the global filter, that matches text in artist name, song title, and disc ID, or search each of the fields separately. Each of the search field have multi-matching capability, meaning that you may enter several match phrases. For example, entering *ma he* in **Title** field will display all songs that contain 'ho' and 'ca' strings in their titles (so the list of results may include *Made In Heaven*, *Hell's Maid*, and *Mayhem*.) As you can see the searches are not case-dependent, and the order of the match does not matter.

Search phrases need to be at least 2 characters long (for large databases displaying all matches for single character might be too slow), but if you would like to apply single-character match or even display all of the songs in the database, select **Apply Filter** button.

Once you entered the search criteria the **Song list** will be populated. To choose the song simply select it from the list.

The list right to the search criteria contains the songs from the history, displayed in order from the newest to the oldest. To choose the song from the history double-click it or select it on the list and then click **From History** button. Both song list and history list can be expanded and searched, using the search button next to them.

To display singers from the current session only, or to limit the number of items in the history lists, use **History Options** button.

All lists are sortable -- to sort the list by the column, click its header. Appropriate sort mark will appear.

Adding tracks from CD+G discs

It is also possible to add tracks from the CD+G disc or a file from the hard disc that is not registered in the database. To do this select **Add CD Track** or **Add File** option -- Siglos Karaoke Professional will display the dialog box allowing to choose the track number or file location, and to enter the song title and artist name.

Display scrolling reminder during previous song will cause the program to display a banner at the

bottom at the screen reminding the singer that he/she will be singing the next song. The message that will be displayed is customizable ({Singer}, {Artist}, and {Song} will be replaced with the appropriate text).

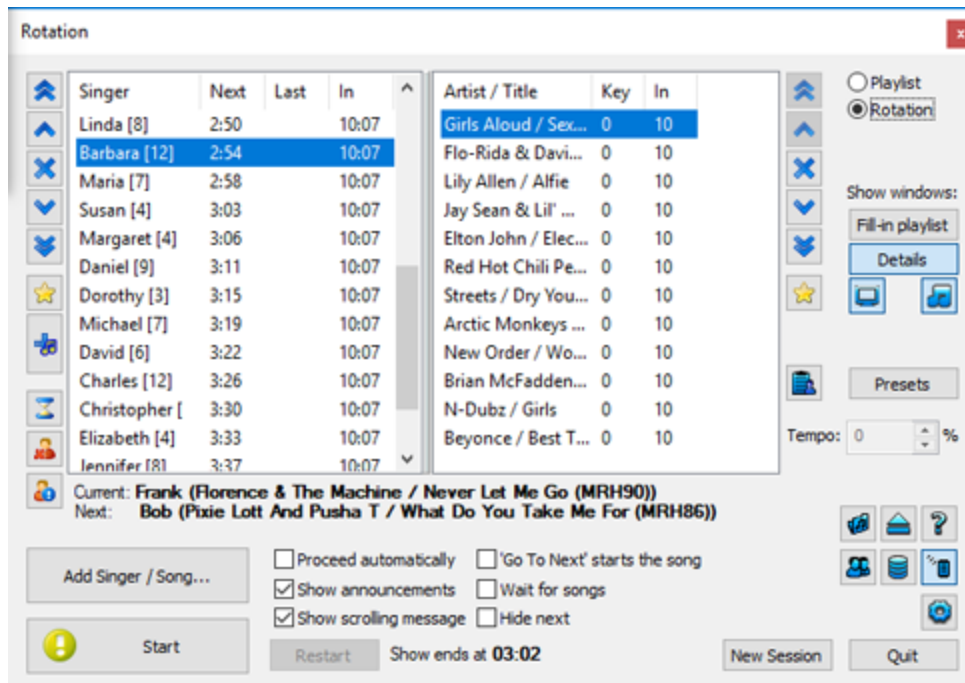
Rotation management

Siglos Karaoke Professional automatically manages the rotation of the singers, however you may select the position in the rotation where then new singer will be placed. By default new singers are placed at the end of the rotation, but you may change this behaviour by adding them to the beginning, after the singer that is currently on stage, or you may specify the exact place to add the singer.

Once you are done with all the settings, select **Add and Close** button. You will return to the rotation window, and the singer and song you have selected will be added.

Playing songs

Song playback is controlled from the rotation/playlist window.



The rotation/playlist window can operate in two modes: rotation and playlist. Rotation allows to manage the singer rotation, and playlist shows the list of songs and singer in order how they will be played. We recommend using rotation mode for hosting karaoke shows.

What is the rotation?

To run the show in fair way you need to make sure that one person does not sing more often than the other. To do this Siglos Karaoke Professional places the singer in the queue, and first play one song for each singer before allowing the second round. The order of the singers is displayed in the list on the left of the rotation window.

In rotation mode the window displays two lists -- singers on the left, and songs on the right. When you click on the singer, the list on the right contains all songs added for the selected singer. The number in brackets


displays the number of songs for the singer.


Next column contains estimated time the singer will be on stage. **Last** displays the last time the singer was on stage. **In** column contains the time singer or song was added.


*TIP: You may choose which time-related columns should be displayed in **Settings** dialog box.*


By default Siglos Karaoke Professional waits for the operator to start the song (songs and singers are added by clicking **Add Singer button**). When the song is ready to be played, the button at the lower left will say **Start** and will display and exclamation mark.


List controls

Both singer list and song list have control buttons next to them. First five buttons () allow to change the position of the selected item (they are for respectively moving the item to the top, moving it upwards, removing from the list, moving down, and moving to the bottom of the list).

Move to next button  allows to advance the singer or the song in the rotation -- it will position the singer or the song for the next performance.

Disable button  temporary disables the singer or song. It will not be removed from the rotation, but will be skipped until the singer or song is enabled again. Disabled items are marked as gray on the list.

Add Song button  opens **Add singer** dialog box with the current singer selected -- it allows to quickly add songs for the selected singer.

Remove empty singers button  removes from the list all the singers that have no songs assigned (they have [0] next to their names).

Usually you would want to display announcement for your audition -- this is controlled with **Show announcements** option. When it is enabled, Siglos Karaoke Professional will display an information screen with singer's name and the song details.



The look of the announcement screen (background and text styles) can be changed in **KJ** section of **Settings** dialog box.

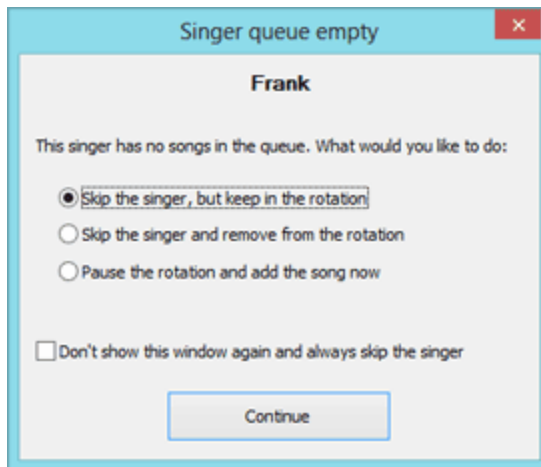
When you are ready to play the song, click **Start**. The song will start, and the button text will change to **Go to next**. Also **Restart** button will become available. Once the song finishes or you click **Go to next** button, the next song will be loaded and **Start** button will appear again (you may also press F5 key for this).

Proceed automatically option will cause the program to enter the automatic mode. It will not wait for you to click **Start**, but will display the singer announcement for the period of time defined in **KJ** section of **Settings** dialog box, and then will automatically play the song.

Show scrolling message is a global control for the message displayed at the bottom of the screen announcing the next singer.

If you click **Go To Next** button, Siglos Karaoke Professional will finish the song and will move to the next singer/song, waiting for the operator to click **Start** button. If '**Go to Next**' starts the song option is selected, the song will start immediately, without waiting for **Start**.

Wait for songs is a control that allows to manage singers that have run out of songs. If the singer that is about to sing has no songs in the queue, Siglos Karaoke Professional will pause and will allow you to choose what to do.



You may choose to skip the singer but keep him/her in the queue, you may remove the singer from the queue, or you may add the song for the singer and allow the singer to sing straight away.

Manage song database gives access to song database management, and **Settings** button opens KJ Settings dialog box.

Show windows section allows to show and hide additional program windows.

Fill in playlist is an additional playlist with music tracks that are played in between karaoke songs

Item details displays and allows to edit currently selected playlist item (you need to select **Apply** button to accept the changes)


Preview window displays a copy of the singer's screen (it is useful if you cannot see the screen)

Instant Sounds window that allows to program keys to play frequently used sound effects or other

music files

Rotation presets allow to save active rotation for later use and load predefined selection, while **User Presets** button allows to save and load a set of songs for the current singer (you can use this for regular customers).

Quick Songs and **Quick Singers** allow fast access to songs and singers without the need to open Add Singer window

Remote Queue () is the command center of the remote access to your show, allowing to browse song list and add requests from remote devices as phones or tablets. This also allows to set up a kiosk mode. See more info in Remote Access section.

Song database

Siglos Karaoke Professional stores the list of the songs in your collection inside a database. The database contains the information about the songs, it does not contains actual song files, which need to be stored on the hard disc of your computer. Siglos Karaoke Professional supports following file formats:

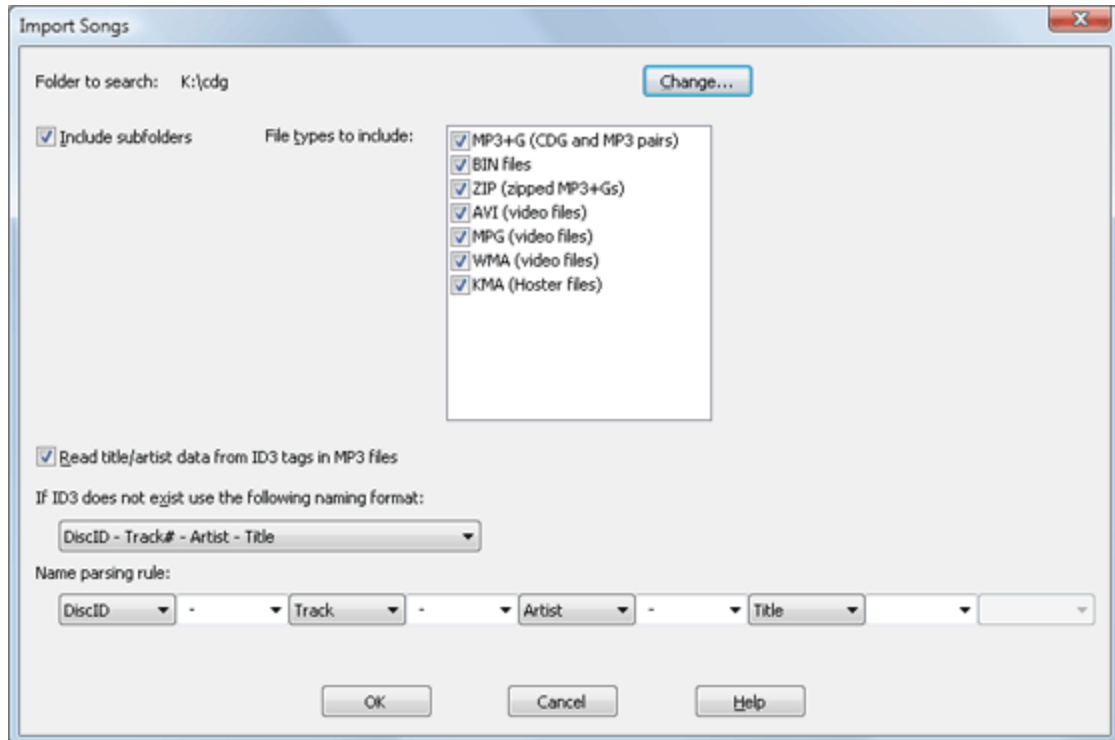
File extension	Description
.cdg	Also known as MP3+G. CDG files are usually paired with MP3 files. CDG file contains lyrics, while MP3 file contains audio of the song. To open a pair of MP3/CDG files you need to open CDG file only
.bin	BIN files contain both lyrics and audio of CD+G song
.zip	Karaoke ZIP files contain pairs of CDG/MP3 files
.cda	CD+G disc tracks
.kar, .mid	MIDI Karaoke
.avi	AVI video files
.mpg	MPG video files
.kma	MTU's Hoster files
.wmv	Windows Media Video files

To add songs to the database you need to run the song import process. Once the songs are successfully imported you may use them in your karaoke shows. You may also browse, modify, and remove songs in the database. It is also possible to export the list of the songs in the database to print the song book.

The database is kept in `siglos.db` file located in `My Karaoke` subfolder of your `Documents` folder. It is a good idea to back this file up from time to time, as if it is deleted or corrupted you will lose your song collection.

Importing songs

To start the import process select **Manage database** button on the playlist window, and then choose **Import songs**. You may also choose **Import songs** command from **File** menu.



First you need to select the root of your song collection (use **Change** button to do this). Then select file types you would like to import (see Supported file types for the list of supported formats). **Include subfolders** allows to scan all folders starting from the root folder. Switch it off if you want to scan a single folder only.

Siglos Karaoke Professional scans MP3 files it finds for ID3 tags containing song title and artist name (it also reads ID3 tags of MP3 files inside ZIP files, but it may significantly slow down the performance and is not recommended). If ID3 tag is not found, a parsing rule is applied to the file name. You may select a predefined rule or create a custom one. It is possible to use one of the four data fields (**Artist**, **Title**, **DiscID**, and **Track**). Choosing **Ignore** will cause the parser to ignore this part of the file name.

Import rule example

If your song collection is named as this example:

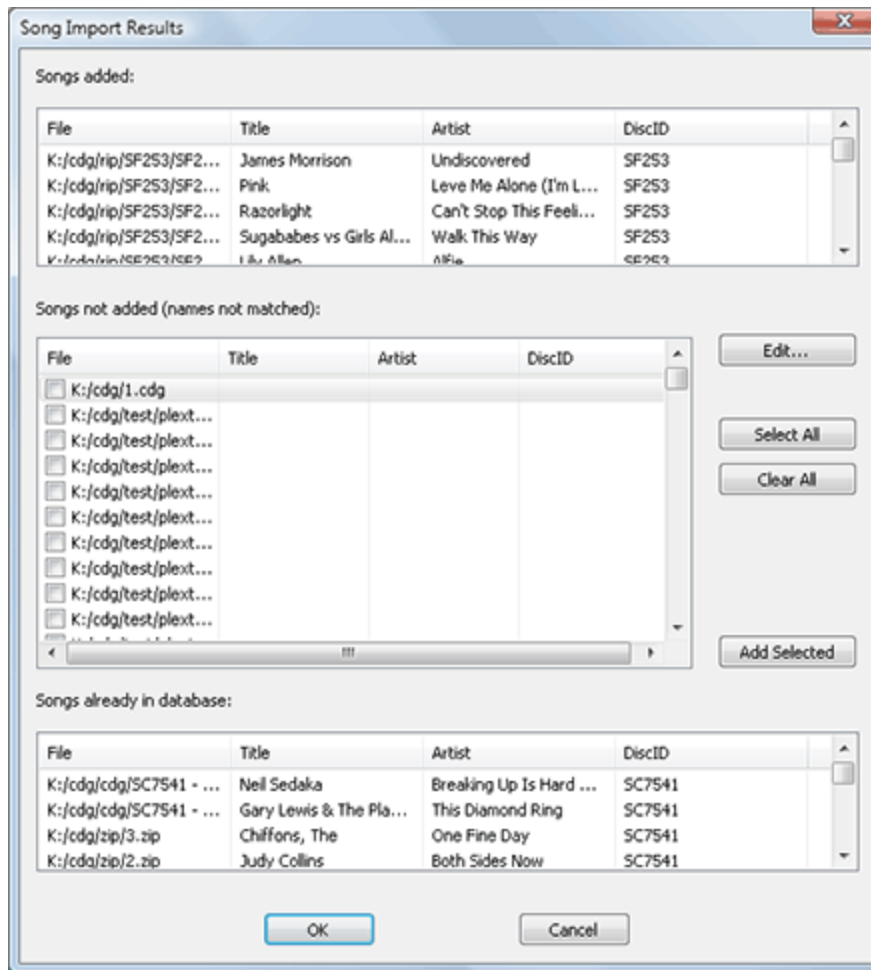
```
SC7541_02 - Gary Lewis & The Playboys - This Diamond Ring.cdg
```

you need to select the following rule:

```
DiscID_Track - Artist - Title
```

The first separator should be ''' (underline), and following separators should be set to '- ' (minus with spaces before and after).

Once you are done setting the import rule, select **OK**. Siglos Karaoke Professional will scan your disc (it may take a while for large collection of songs) and will report its findings in **Song Import Results** dialog box.

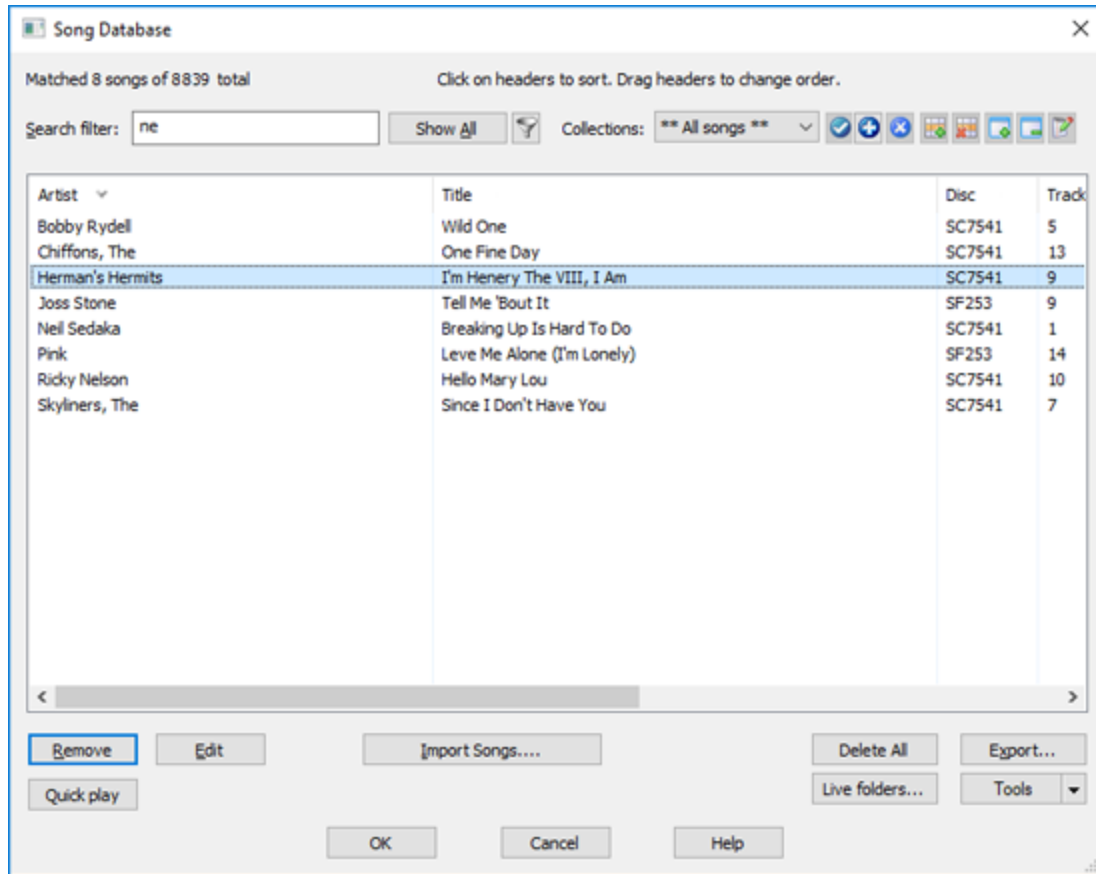


Song Import Result dialog box contains all files Siglos Karaoke Professional has found, divided into three groups. First list contains files that either contained ID3 tags, or matched the parsing rule, and were successfully imported into the database. The second list contains the files that matched the file extension, but did not have ID3 tags, nor their names matched the parsing rule. The third list contains files already in the database.

You may manually edit songs that were not matched -- to do this select the song you would like to edit, and then click **Edit** button. To add edited songs do the database click **Add Selected** button. Once you are done editing select **OK**. You will return to **Song Database** dialog box, which allows you to view and edit all songs currently in the database. Once you are done click **OK**.

Managing the database

To open the song database manager select **Manage song database** button on the playlist window, or choose **Song database** command from **File** menu. **Song database** dialog box will appear.

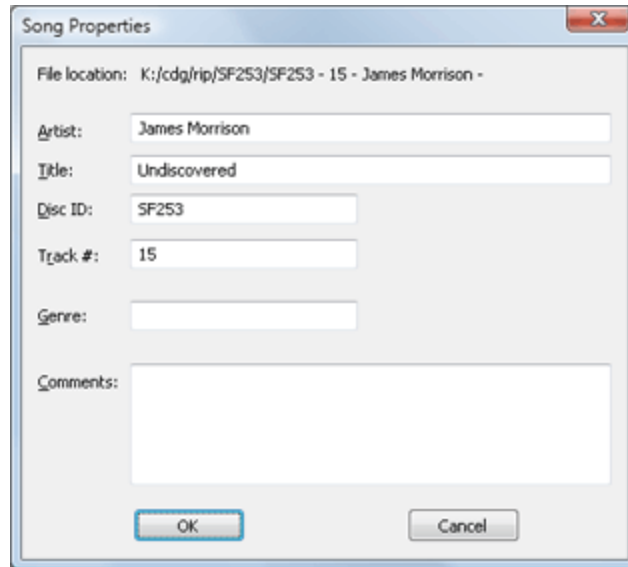


Song database dialog box allows you to find any song in the database. The text entered in **Search filter** is matched against artist name, song title, and disc ID. It has multi-matching capability, meaning that you may enter several match phrases. For example, entering *ma he* will display all songs that contain 'ho' and 'ca' strings (so the list of results may include *Made In Heaven*, *Hell's Maid*, *Mayhem*, and *Last Day of May* by *The Heap*) As you can see the searches are not case-dependent, and the order of the match does not matter.

To view all the songs in the database click **Show All** button (it may take a while to display large databases).

Remove button allows you to remove the song that is currently selected in the list of songs. You may select and remove more than one song (press CTRL key when selecting to select multiple songs, or press SHIFT key to select a range of songs).

Edit button displays and allows to modify the properties of first of the selected songs. It displays **Song Properties** dialog box.



You may change any of the fields. Once you are done select **OK**.

Import Songs button allows to import songs into the database.

Export button allows to save the list of the songs in the database into the text or data file that can be used to create a song book.

Delete All removes all songs from the database.

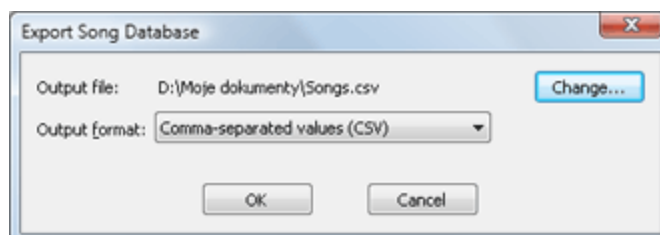
Validate songs checks if all the files registered in the database exist. If they do not exist you will be presented with three options:

- remove the song from the database (use this option if the songs have been deleted from the hard drive)
- keep the songs (use this option if you plan to replace the songs, ie. if you will reconnect the external drive)
- look for the songs on a different drives (this option is useful if you have the songs on the external drive and the drive letter has changed)

Collections allow to define subsets of your song collection to use in Remote Queue. You may add currently displayed songs as a new collection, and then add or remove songs from the collection to fine-tune it.

Export song list

Siglos Karaoke Professional allows to export the list of the songs from the song database. Such list can be used to create a song book. To export the list of the songs select **Export** button in **Song database dialog box**.



Output file specifies the file song list will be written to.

Output format allows to specify the format of the file. Siglos Karaoke Professional can create following files:

CSV Comma-separated values

You may use this file in any spreadsheet application (Excel from Microsoft Office, or free Calc from OpenOffice) to process this file and create custom song book. You should also be able to import it into song book software.

XML Structured XML file

This file format can be used in a custom application or in XML-aware software.

The output file contains all songs from the database. The data written include unique song identifier, artist name, title, disc ID, and file name.

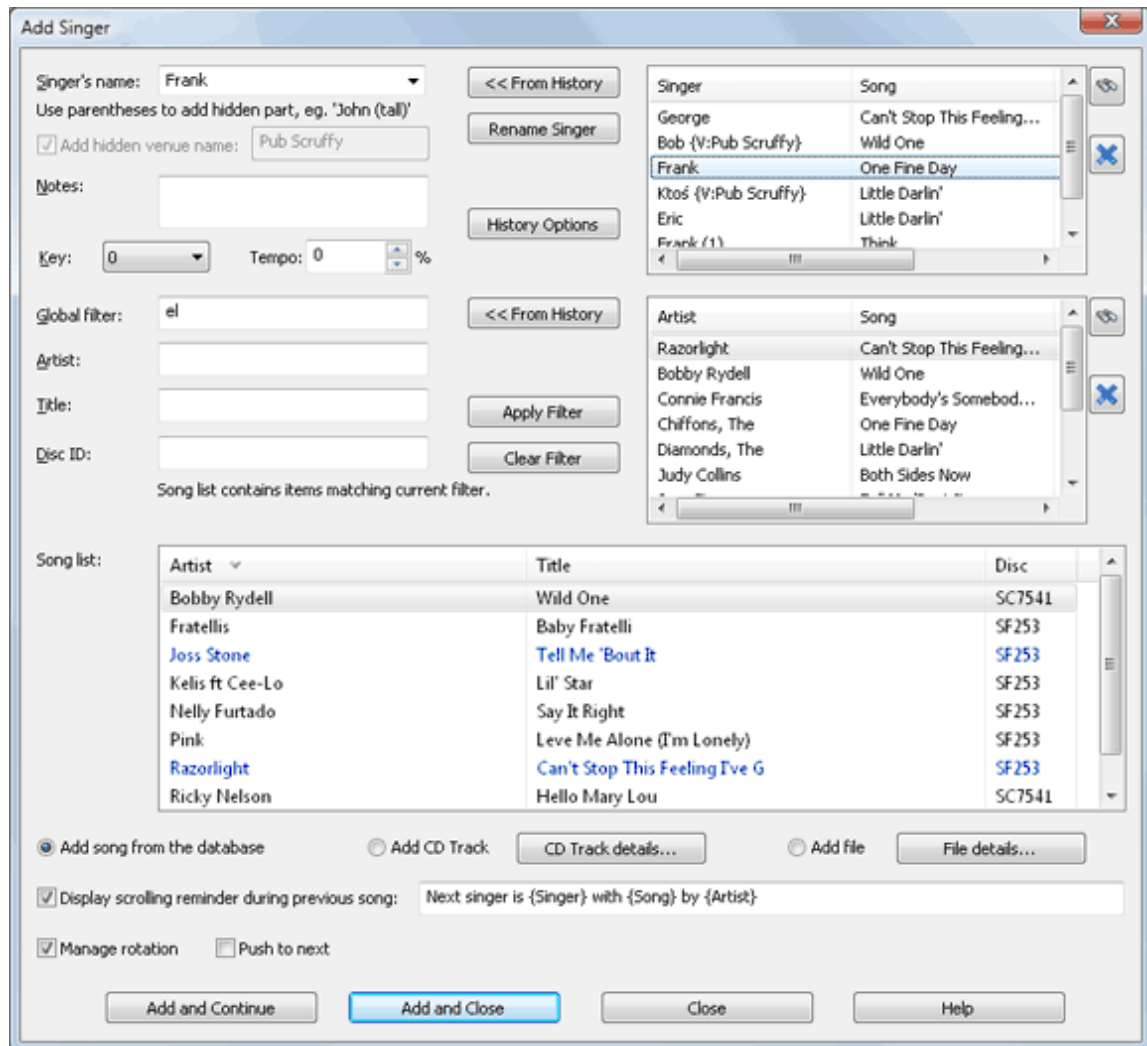
Re-Import songs

If you would like to do some changes to the information in the database using external tools, you may export songs to XML format and then re-import them. This would work for batch renaming -- for example if you would like to change all occurrences of ELVIS to Elvis.

XML file need to have the same structure as the one that Siglos exports.

Adding singers

To add the singer to the playlist select **Add Singer** button on the playlist window or choose **Add singer/song** command from **File** menu. **Add Singer** dialog box will be displayed.



Choosing the singer

First you need to select the singer. If you would like to use the singer that already is in the rotation, select it from the drop-down list. If you are adding a new singer, type the name into **Singer's name**.

If you enter the name of the new singer that already is listed in the database, Siglos Karaoke Professional will display warning and will prompt you to choose one of the possible actions:

- **Add hidden description in parentheses** will create a new singer name by adding hidden number to the name (the number will be visible to you only, your audience will not see it)
- **Use different name** allows you to select the different name for the singer
- **Add new singer** of the same name will add a new singer with the same name as the one in the database
- **Use the last singer of the same name from the database** will invoke the last singer of the same name from the database

It is also possible to add to the name extra description in parentheses (eg. John (Smith)). The part of the name in parentheses will not be visible to the audience, it is for your use only. You may also add extra notes about the singer in **Notes** field.

Siglos Karaoke Professional allows you to tag the singers by venue name. To this check **Add hidden venue name** option and type the name of the venue into the edit box. With this option enabled Siglos

Karaoke Professional will add hidden {v:Name} field to the singer name. You may later choose to display only singers from the same venue (to do this check **Show from current venue only** option in **History Options**).

If the singer requires non-standard song key, select it in the **Key** list. It is possible to change the key 12 tones lower or higher, but using values larger than 5 may cause sound quality degradation.

You may also modify the tempo of the song -- the range is from -100% (it is twice as slow) to +100% (twice as fast).

If you have added singers in the past, the list next to **Singer's name** will contain singers and songs they sung -- to quickly select the singer double-click appropriate item on the list (or single-click it and then select **From History** button). Selecting a singer from the history will fill **Song list** with the list of the songs sung by the singer in the past. Both song list and history list can be expanded and searched, using the search button next to them.

Once you have chosen the singer, it is time to choose the song

Note: you may skip selecting the singer step -- if you do this singer field will be blank

Selecting song

Siglos Karaoke Professional allows to search the song database using multiple field matching. You may use the global filter, that matches text in artist name, song title, and disc ID, or search each of the fields separately. Each of the search field have multi-matching capability, meaning that you may enter several match phrases. For example, entering *ma he* in **Title** field will display all songs that contain 'ho' and 'ca' strings in their titles (so the list of results may include *Made In Heaven*, *Hell's Maid*, and *Mayhem*.) As you can see the searches are not case-dependent, and the order of the match does not matter.

Search phrases need to be at least 2 characters long (for large databases displaying all matches for single character might be too slow), but if you would like to apply single-character match or even display all of the songs in the database, select **Apply Filter** button.

Once you entered the search criteria the **Song list** will be populated. To choose the song simply select it from the list.

The list right to the search criteria contains the songs from the history, displayed in order from the newest to the oldest. To choose the song from the history double-click it or select it on the list and then click **From History** button. Both song list and history list can be expanded and searched, using the search button next to them.

To display singers from the current session only, or to limit the number of items in the history lists, use **History Options** button.

All lists are sortable -- to sort the list by the column, click its header. Appropriate sort mark will appear.

Adding tracks from CD+G discs

It is also possible to add tracks from the CD+G disc or a file from the hard disc that is not registered in the database. To do this select **Add CD Track** or **Add File** option -- Siglos Karaoke Professional will display the dialog box allowing to choose the track number or file location, and to enter the song title and artist name.

Display scrolling reminder during previous song will cause the program to display a banner at the bottom at the screen reminding the singer that he/she will be singing the next song. The message that will be displayed is customizable ({Singer}, {Artist}, and {Song} will be replaced with the appropriate text).

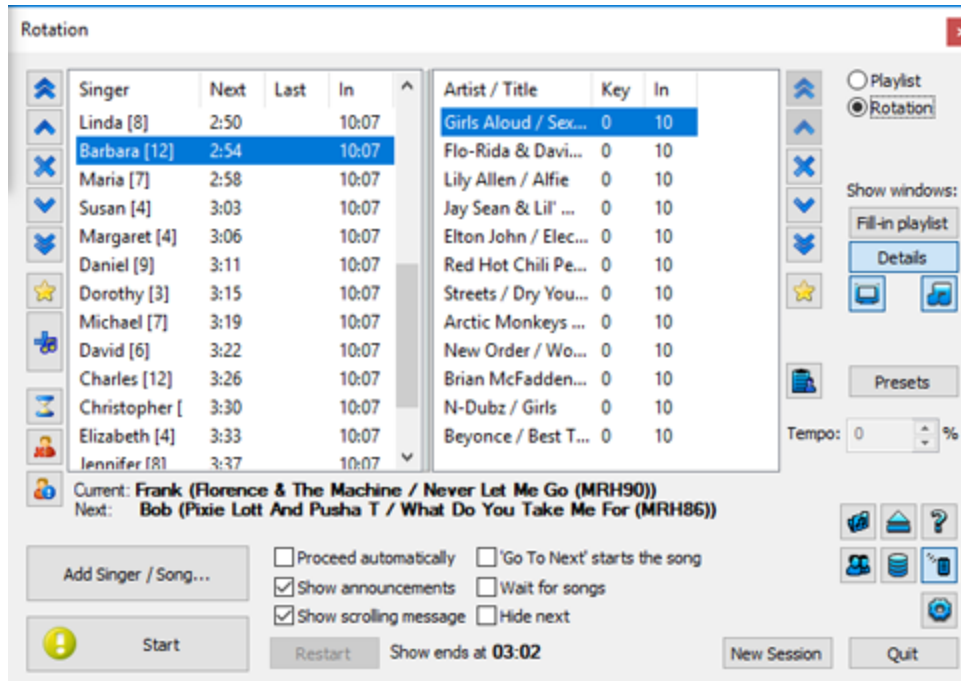
Rotation management

Siglos Karaoke Professional automatically manages the rotation of the singers, however you may select the position in the rotation where then new singer will be placed. By default new singers are placed at the end of the rotation, but you may change this behaviour by adding them to the beginning, after the singer that is currently on stage, or you may specify the exact place to add the singer.

Once you are done with all the settings, select **Add and Close** button. You will return to the rotation window, and the singer and song you have selected will be added.

Playback management

Song playback is controlled from the rotation/playlist window.



The rotation/playlist window can operate in two modes: rotation and playlist. Rotation allows to manage the singer rotation, and playlist shows the list of songs and singer in order how they will be played. We recommend using rotation mode for hosting karaoke shows.

What is the rotation?

To run the show in fair way you need to make sure that one person does not sing more often than the other. To do this Siglos Karaoke Professional places the singer in the queue, and first play one song for each singer before allowing the second round. The order of the singers is displayed in the list on the left of the rotation window.


In rotation mode the window displays two lists -- singers on the left, and songs on the right. When you click on the singer, the list on the right contains all songs added for the selected singer. The number in brackets displays the number of songs for the singer.


Next column contains estimated time the singer will be on stage. **Last** displays the last time the singer was on stage. **In** column contains the time singer or song was added.


*TIP: You may choose which time-related columns should be displayed in **Settings** dialog box.*


By default Siglos Karaoke Professional waits for the operator to start the song (songs and singers are added by clicking **Add Singer** button). When the song is ready to be played, the button at the lower left will say **Start** and will display an exclamation mark.


List controls

Both singer list and song list have control buttons next to them. First five buttons () allow to change the position of the selected item (they are for respectively moving the item to the top, moving it upwards, removing from the list, moving down, and moving to the bottom of the list).

Move to next button  allows to advance the singer or the song in the rotation -- it will position the singer or the song for the next performance.

Disable button  temporarily disables the singer or song. It will not be removed from the rotation, but will be skipped until the singer or song is enabled again. Disabled items are marked as gray on the list.

Add Song button  opens **Add singer** dialog box with the current singer selected -- it allows to quickly add songs for the selected singer.

Remove empty singers button  removes from the list all the singers that have no songs assigned (they have [0] next to their names).

Usually you would want to display announcement for your audition -- this is controlled with **Show announcements** option. When it is enabled, Siglos Karaoke Professional will display an information screen with singer's name and the song details.



The look of the announcement screen (background and text styles) can be changed in **KJ** section of **Settings** dialog box.

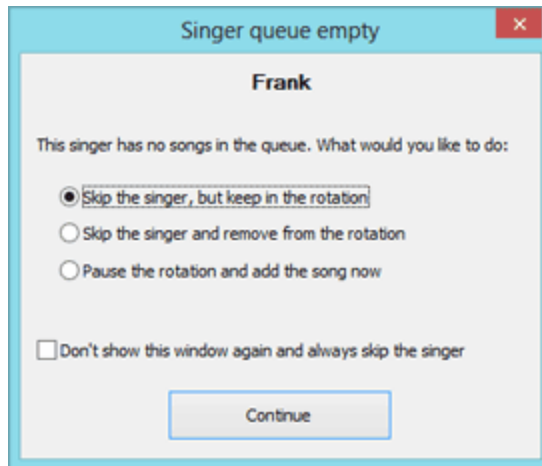
When you are ready to play the song, click **Start**. The song will start, and the button text will change to **Go to next**. Also **Restart** button will become available. Once the song finishes or you click **Go to next** button, the next song will be loaded and **Start** button will appear again (you may also press F5 key for this).

Proceed automatically option will cause the program to enter the automatic mode. It will not wait for you to click **Start**, but will display the singer announcement for the period of time defined in **KJ** section of **Settings** dialog box, and then will automatically play the song.

Show scrolling message is a global control for the message displayed at the bottom of the screen announcing the next singer.

If you click **Go To Next** button, Siglos Karaoke Professional will finish the song and will move to the next singer/song, waiting for the operator to click **Start** button. If '**Go to Next**' starts the song option is selected, the song will start immediately, without waiting for **Start**.

Wait for songs is a control that allows to manage singers that have run out of songs. If the singer that is about to sing has no songs in the queue, Siglos Karaoke Professional will pause and will allow you to choose what to do.



You may choose to skip the singer but keep him/her in the queue, you may remove the singer from the queue, or you may add the song for the singer and allow the singer to sing straight away.

Manage song database gives access to song database management, and **Settings** button opens KJ Settings dialog box.

Show windows section allows to show and hide additional program windows.

Fill in playlist is an additional playlist with music tracks that are played in between karaoke songs


Item details displays and allows to edit currently selected playlist item (you need to select **Apply** button to accept the changes)

Preview window displays a copy of the singer's screen (it is useful if you cannot see the screen)

Instant Sounds window that allows to program keys to play frequently used sound effects or other music files

Rotation presets allow to save active rotation for later use and load predefined selection, while **User Presets** button allows to save and load a set of songs for the current singer (you can use this for regular customers).

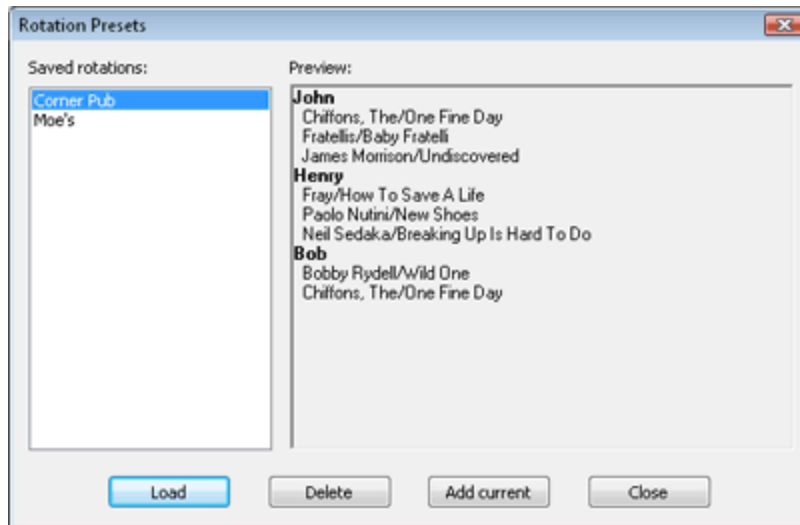
Quick Songs and **Quick Singers** allow fast access to songs and singers without the need to open Add Singer window

Remote Queue () is the command center of the remote access to your show, allowing to browse song list and add requests from remote devices as phones or tablets. This also allows to set up a kiosk mode. See more info in Remote Access section.

Rotation presets

Siglos Karaoke Professional allows to store predefined rotation and load them without the necessity to add singers and songs one by one. This can be very useful if you run your show in a place that has regular singers singing their favorite songs.

To enter rotation preset management click **Presets** button in Rotation dialog box.



The list on the left contains available rotation presets.

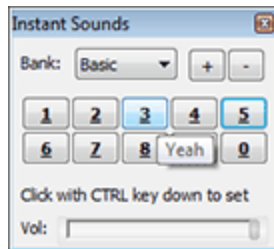
To add current preset to this list select **Add current** button and enter the name of the preset.

To load the saved preset select it on the **Saved rotations** list (**Preview** window will show the rotation) and then click **Load** button. Current rotation will be removed and saved preset will be loaded in its place.

If you would like to remove one of the items from the list select the item to remove and click **Delete** button.

Instant Sounds

Instant Sounds window allows you to assign frequently used sounds (like cheers, applause, or introductions) to the panel of 10 keys.



Buttons with digits allow to play back sounds that are assigned to them. If the button does not have sound assigned, clicking it will open dialog box that allows to assign a sound file and define the name for the sound. You may change sound association by clicking the button with CTRL key pressed down.

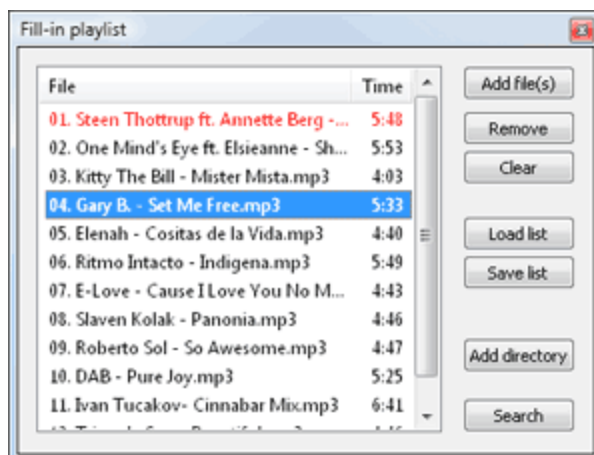
If you need more than 10 sounds you may create additional sound bank by clicking + button. Each bank contains ten sounds and the number of banks is unlimited.

Vol slider controls the volume of the sound.

Siglos Karaoke Professional comes with 10 predefined sound effects.

Fill-in playlist

If you would like to have the music played when nobody is singing, use the fill-in playlist. To open it click **Fill-In Playlist** button on the playlist window.



To add songs to the fill in list select **Add file(s)** button and then select the files you would like to add. **Add directory** allows to add files from the multiple folders.

Fill in list is automatically activated when no song from the main playlist is being played. When switching to and from the fill in playlist, the music is faded in and out.

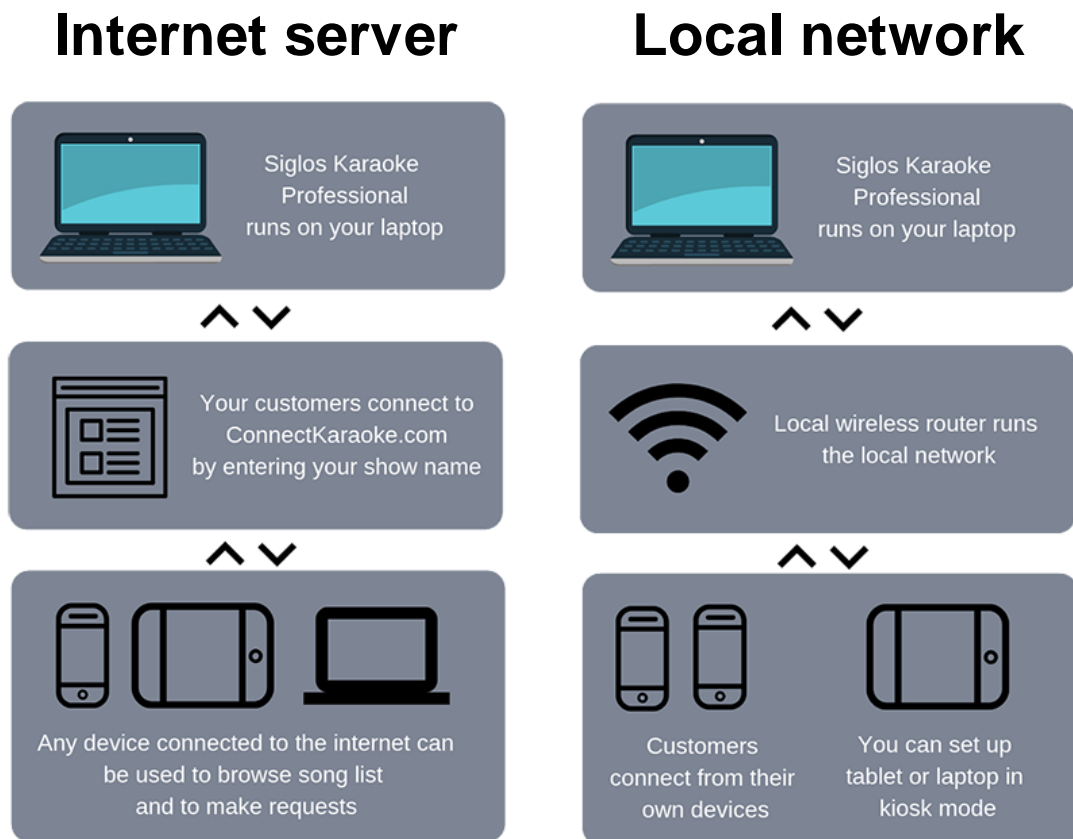
Fill in list is saved between sessions, and the first song from the list is played when starting a new session. You may change this behaviour by unchecking **Initiate fill-in playback on program start** option in **KJ Settings**.

Remote access

Siglos Professional allows you to set up your show for remote access. Customers can browse the list of songs and add requests using their own devices (phones, tablets, laptops) or you may provide a pre-set device for them. This eliminates the need for printed songbooks, makes searching for songs much faster and you, as a KJ, do not have to deal with paper request slips.

Remote request mode also enables customers to create their accounts, so they can check the songs they have sung in the past, add them to the rotation, and manage their rotation without bothering the KJ.

Remote access can be run in two connection modes (they are not exclusive, both can be used at the same time):



Running remote requests in Internet server mode

Running remote requests in Local network mode

Remote queue

Settings

Matching singers

Internet server: Quick start

1. Before you start using remote queue in Siglos you need to open an account at connectkaraoke.com. It is a website that serves as an intermediary between Siglos running on your laptop and your customers. You will need to provide the email address and a unique name for your show. To provide you with this service we need to charge a monthly fee for it.

On your account page at Connect Karaoke you will find an API key that you will need to connect Siglos to the server. You can also choose if customers need to enter code before accessing your show (you may change the code each night so only people attending know it and you will not get bogus requests by jokers).

2. To enable the remote interface in Siglos open **Remote Queue** window using **Remote Queue** button in

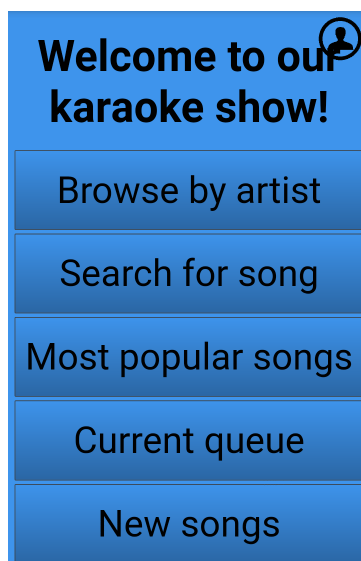
Rotation window () ,open **Settings** and go to **Internet** card. Enter the API key in the appropriate field. *connectkaraoke.com* should be selected as **web server to use**. Click **Test connection** button to see if everything works.

3. Now you have two ways to provide customers with access to your show. You may:

- A. Give customers your **show name** and (optional) **access code** and ask them to enter connectkaraoke.com on their devices
- B. Use **Direct URL** to have customers enter directly to your show. You may either put the link on your website or you can use QR code generated in Siglos for the customers to scan on their phones for fast access. Sample QR code looks like this:

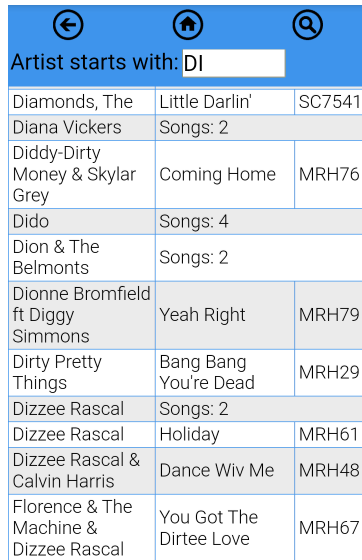


3. When customers go to the address provided by you, they will be presented with the starting page. You can control how this page looks in Remote Queue Settings.



The login icon in top right corner is displayed only if cookies are enabled.

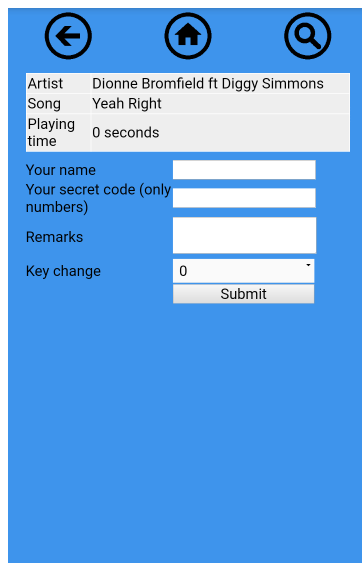
4. Customers have your song book at their fingertips. They can browse, search, and add requests by touching the songs on the list.



Artist starts with: DI		
Diamonds, The	Little Darlin'	SC7541
Diana Vickers	Songs: 2	
Diddy-Dirty Money & Skylar Grey	Coming Home	MRH76
Dido	Songs: 4	
Dion & The Belmonts	Songs: 2	
Dionne Bromfield ft Diggy Simmons	Yeah Right	MRH79
Dirty Pretty Things	Bang Bang You're Dead	MRH29
Dizzee Rascal	Songs: 2	
Dizzee Rascal	Holiday	MRH61
Dizzee Rascal & Calvin Harris	Dance Wiv Me	MRH48
Florence & The Machine & Dizzee Rascal	You Got The Dirtee Love	MRH67

Please note that in **Browse by artist** mode multiple songs by the same artist are combined.

5. When a user selects the song, Siglos displays a form that allows to add the request.

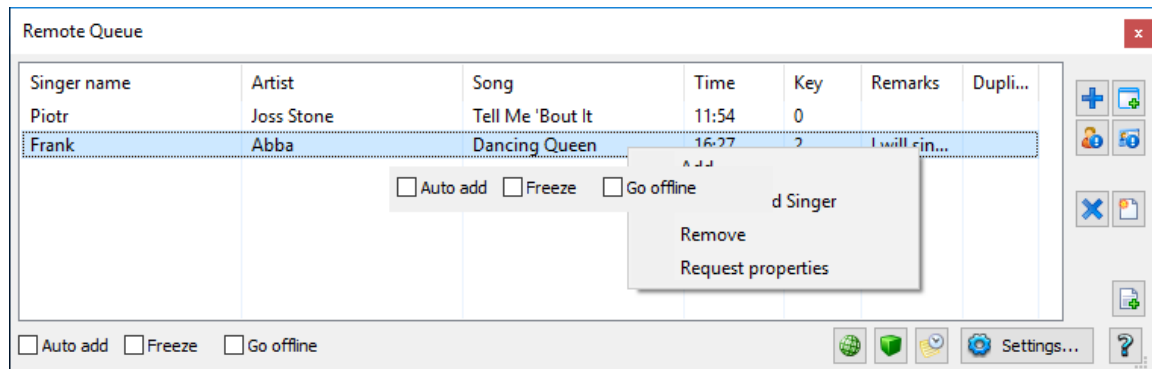


Artist	Dionne Bromfield ft Diggy Simmons
Song	Yeah Right
Playing time	0 seconds
Your name	<input type="text"/>
Your secret code (only numbers)	<input type="text"/>
Remarks	<input type="text"/>
Key change	0
<input type="submit" value="Submit"/>	

The user is required to choose a secret numeric code that is used as password and prevents other users from adding (and removing) songs on her/his behalf.

When adding song it is possible to request a key change. Remarks field allows to provide the KJ with more information if needed.

6. Requests added by the users are placed in the Remote Queue (unless **Auto Add** is enabled, see more info here)




Double-clicking on the request adds it to the rotation. You may also choose to open the song and singer in **Add Singer** using button or a right-click menu item. You may display singer information using **Edit Singer** button. It allows to match singer from the request to one in your database (see more in Matching singers).

Now you are ready to run your show. Please see below topics for more detailed information on how to adjust remote request functionality to your needs.

Local network: Quick start

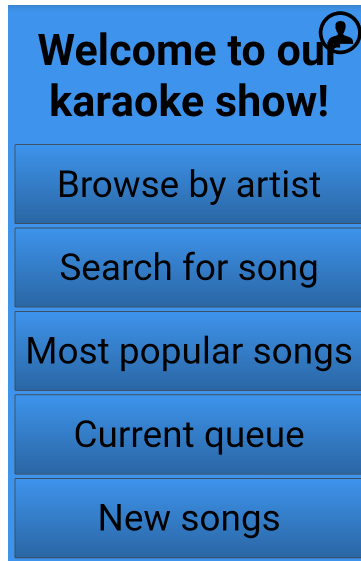
Before you start using remote queue in Siglos you need to have client devices (customer phones or your kiosk device) connected to the same network as the computer that is running Siglos. You may provide a WiFi router to do this and provide your customers with a password to connect to the router.

1. To enable the remote interface in Siglos open **Remote Queue** window using **Remote Queue** button in Rotation window () ,open **Settings**, go to **Local network** card and make sure that **Enable local network server** option is checked there.

2. If your computer has more than one network interface, select the one used for customers' router in **Local server network**. Also make a note of a port used by the server (it is 6803 by default). Below you will find the link to provide to the customers. You may generate a QR code for the customers to scan on their phones for fast access. Sample QR code looks like this:



3. When customers go to the address provided by you, they will be presented with the starting page. You can control how this page looks in Remote Queue Settings.



The login icon in top right corner is displayed only if cookies are enabled.

4. Customers have your song book at their fingertips. They can browse, search, and add requests by touching the songs on the list.

Artist starts with: DI		
Diamonds, The	Little Darlin'	SC7541
Diana Vickers	Songs: 2	
Diddy-Dirty Money & Skylar Grey	Coming Home	MRH76
Dido	Songs: 4	
Dion & The Belmonts	Songs: 2	
Dionne Bromfield ft Diggy Simmons	Yeah Right	MRH79
Dirty Pretty Things	Bang Bang You're Dead	MRH29
Dizzee Rascal	Songs: 2	
Dizzee Rascal	Holiday	MRH61
Dizzee Rascal & Calvin Harris	Dance Wiv Me	MRH48
Florence & The Machine & Dizzee Rascal	You Got The Dirtee Love	MRH67

Please note that in **Browse by artist** mode multiple songs by the same artist are combined.

5. When a user selects the song, Siglos displays a form that allows to add the request.

The user is required to choose a secret numeric code that is used as password and prevents other users from adding (and removing) songs on her/his behalf.

When adding song it is possible to request a key change. Remarks field allows to provide the KJ with more information if needed.

6. Requests added by the users are placed in the Remote Queue (unless **Auto Add** is enabled, see more info here)

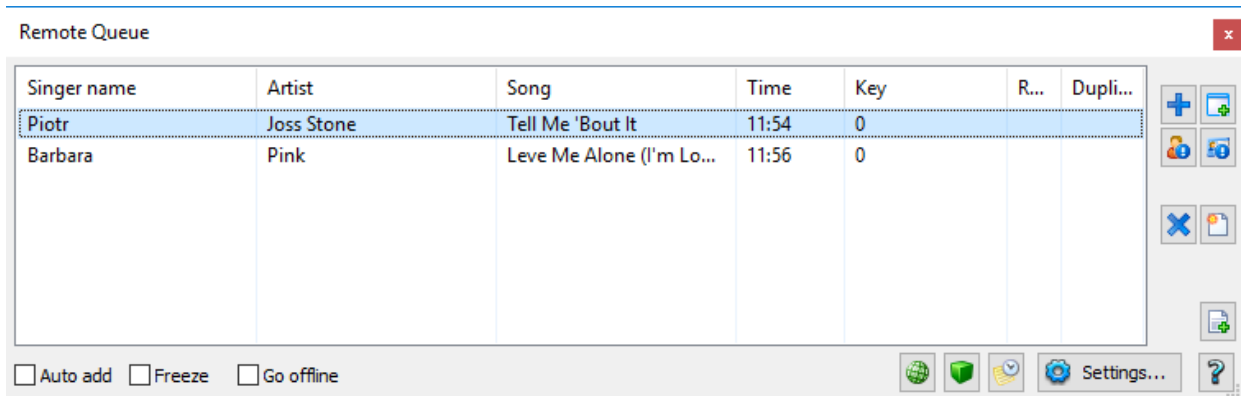
Singer name	Artist	Song	Time	Key	Remarks	Dupli...
Piotr	Joss Stone	Tell Me 'Bout It	11:54	0		
Frank	Abba	Dancing Queen	16:27	2	I will rin...	

Double-clicking on the request adds it to the rotation. You may also choose to open the song and singer in **Add Singer** using button or a right-click menu item. You may display singer information using **Edit Singer** button. It allows to match singer from the request to one in your database (see more in Matching singers).

Now you are ready to run your show. Please see below topics for more detailed information on how to adjust remote request functionality to your needs.

Remote queue

Remote queue is the control center for most of the remote access functions. When a singer makes a request on their phone, this is where KJ sees the request. It also provides options to control remote access.



The list contains requests done by the singers from the remote devices (unless **Auto add** is enabled, see below). It displays the name of the singer, the song he/she has chosen and some additional information. The window is resizable and you can arrange the order of the columns to your liking by dragging and dropping the headers.

Dark blue color mean matched singer. Light blue is a request that had 'This is my first request tonight' option selected when adding a song.

Clicking on the requests selects it and enables you to perform additional actions. You may:

- Add** the song to the rotation. This puts the song straight into the rotation.

- Open in Add Singer** before adding to the rotation

- Edit Singer** in **Singer** window (only for singers already in the history)

- Use **Request details** to open full information about the request and allows to match the singer to one from the history

- Remove** the request from the list

- Remove All** requests

- Add All** requests

The area on the bottom allows you to control the remote request engine.

- Auto add** does not list requests in **Remote Queue** window, but places them directly into the rotation. You may define exceptions in **Remote Queue Settings / General** section

- Freeze** disables the possibility to add requests, but keeps the server running (users can browse the songs).

- Go offline** blocks the access to the server (both local and internet).

More advanced options (for example choosing to automatically add requests only from registered singers) can be accessed in **Settings**.

The sphere button displays the current state of the internet server connection (red means error, green - OK, grey - disabled).

The cube button displays the current state of the song list cache (red means loading, yellow - first level done, green - ready).

History opens requests from the past.

Settings opens the Settings window that allows to adjust remote access functionality.

Settings

Local Network **Local server port** defines TCP port used by web interface. This port must be open in firewall

Local server network allows to select the network interface used by Siglos. This allows to use one interface to connect your laptop to the internet (don't select it here) and use the second one for local server (this should be selected here).

Client URL is an address that customers should enter in their mobile phone browser to open the remote interface. If you are using this in a kiosk setup, or if you are providing your devices for the customers, you may choose to use the interface with cookies always disabled (this ensures that user's data is not stored in the browser)

Siglos can generate **QR code** that contains the client URL. You may display it and users can scan it with their phones.

Use query cache is a setting that affects the speed of browsing of the songs. If cache is disabled, Siglos prepares a fresh list of songs based on user criteria every time request is made. With cache enabled queries that are single letters or pair of letters are prepared and kept in memory, so they are presented to the user much faster. Cache is build after the program starts and for approx. 100K songs it takes 5 minutes before it is ready on a regular computer.

As it takes a while to create the cache Siglos can save cache to disc once it is created and preload it on the next run. It will rebuild the cache, but queries will run fast from the start. You can disable this functionality using **Store query cache from the last run and load before generating** option.

Internet **Enable internet server** turns the connection on and off

Web server to use allows to choose the server if more than one is available

API key is obtained from your Connect Karaoke account page and allows Siglos to identify itself on the server

Test connection button will check, if everything is correct

Your show name is the name you define on your Connect Karaoke account and which will be used by users to enter your show

Direct URL allows direct access to your show, but customers still have to enter your show's code if enabled

Direct URL (no code) skips code input and provides direct link

General **Allow cookies** enables user names and password storage on client machines. You can override this using one of the links generated on **Network** page.

Max number of requests limits how many requests can be in the queue. If the limit is reached, users cannot add songs.

Max number of requests per singer limits the number of requests singer can place. When a song is sung, singer can place next request.

When **Auto add** is enabled in Remote Queue window requests are automatically processed and songs are added to the rotation. You may disable this feature with the following conditions:

Pause when remarks entered : if singer enters anything in **Remarks** section

Pause when singer not matched : if singer is not matched against any singer from the database

Pause when song has duplicates : if more than one version of the song exists

Keychange steps allowed defines the number of semitones to modify the song that user can request

If you disable **Require secret code** option, user will not have to enter the code when making requests, but this will also cause adding new singer with each request. This works best for automatic kiosks. You may also choose if singers are required to provide unique names.

Enable 'This is my first request tonight' field shows appropriate checkbox under the singer's name when adding a song. Requests with this option selected will be displayed in light blue on the list of requests. You may also choose to force new singers to provide unique name, so you do not have four Toms in the rotation.

Require initial after space in singer name will force singers to add extra letter after name, so you do not have only single names in the rotation. This would work well with any of the name checking options.

Display

Page color and **Text color** are the colors used in remote interface

Song list presentation section allows to fine-tune the page. Options are:

Show on-screen keyboard : with this enabled Siglos will add keyboard buttons to the search screen (use if remote device you are using does not provide an on-screen keyboard)

Show disc IDs : names of discs will be displayed to the user

Merge duplicates (same song and artist name) : the same song from different discs will be listed only once

Hide incomplete (blank artist or song) : songs missing some information will be hidden from the user

Detect commas in artist names (Beatles, The -> The Beatles) : artist names will be displayed in more readable form

If you choose to include the most popular songs, here you can define the **Number of most popular songs to display** and number of days to go back and make the statistics.

If you choose to display the singer's queue, you may define the maximum number of songs and allow only the first song for each singer to display (this is overridden if the user is logged in).

Title page

This window allows to define the first page that the users see. You can select which buttons will be available, you can rename them and you can modify the initial message displayed (it can be either a text or a image).

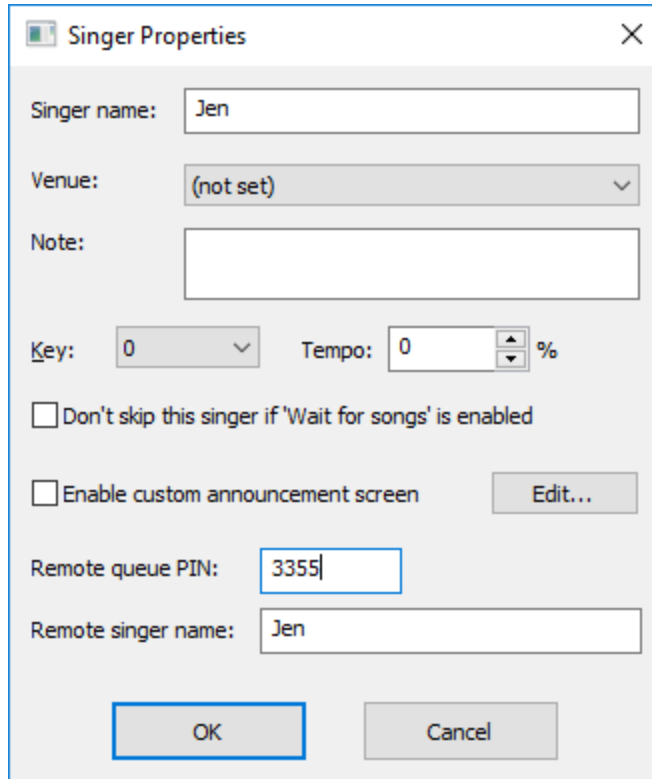
You may also choose a separate image that can be displayed in the background of the title page.

Collections allow you to assign custom buttons to song subsets, for example duets or love songs. You can define collections in Song Database window.

Matching singers

As a KJ you probably have a lot of regular singers in your database. You may configure remote queue so your regulars are matched to their database entries.

Users in the database are identified by name and venue (so you can have the same users on different venues). But remote access allows several users of the same name -- they identify themselves using secret code. You may create initial password for your regulars. Do do this go to open singer properties (either from **Add Singer / Edit Singers / Properties** or by using **Edit singer properties** button in **Rotation** window) and you will find two fields that apply to remote request users:




Remote singer name is the name that user enters when logging in or adding songs. **Remote queue PIN** is his/her secret code.

It is also possible to match singers to existing entries in the database directly from **Remote queue** window. You need to select the singer on the list of waiting requests and click **Edit singer**. Then find the singer in the database and finish with **Select**.

Basic mode

Quick start (basic mode)


Selecting a file to play

Click **Load File** () button. As standard Open File dialog box will appear allowing you to open karaoke files. The following karaoke formats are supported:

File	Description
------	-------------

extension	
.cdg	Also known as MP3+G. CDG files are usually paired with MP3 files. CDG file contains lyrics, while MP3 file contains audio of the song. To open a pair of MP3/CDG files you need to open CDG file only
.bin	BIN files contain both lyrics and audio of CD+G song
.zip	Karaoke ZIP files contain pairs of CDG/MP3 files
.cda	CD+G disc tracks
.kar, .mid	MIDI Karaoke
.avi	AVI video files
.mpg	MPG video files
.kma	MTU's Hoster files
.wmv	Windows Media Video files


If you wish to play a CD+G disc, click **Load CD** () button (if you have more than one CD drive


installed on your computer you may need to select the active drive using **Settings** () button under **CD settings**.




Once a file is loaded its name will be displayed over the position bar and the file will also be added to the playlist.

If you do not have any karaoke files you may use **Search for karaoke on the internet** command from **Tools** menu to find karaoke music.

Playing


To start the playback click **Play** () button. Playback is controlled using standard buttons -- you may pause the playback anytime you like. If you would like to view the song on the full screen, click **Full**


Screen () button. To exit the full screen mode press ESC.

To control the volume of the song use **Volume** slider (). There are two additional sliders that may be used during the playback. You may change the key of the song using **Key change** slider () up to 12 semitones (*NOTE: key changer is not available for MIDI karaoke*). **Multiplex** slider () allows to control the level of the vocal on multiplex CD+Gs.

Recording

Siglos Karaoke Professional allows you to record your voice as you sing along to the karaoke song. Your computer has to be equipped with a microphone. To learn more how to set up your microphone to use it with Siglos Karaoke Professional see Recording settings.

To start recording click Record () button. Your singing will be recorded to the file on your hard disc.



To listen to it simply play back the karaoke file, but make sure that **Recorded vocal on/off** () button is enabled (it is enabled by default).

Once recording is finished you will be prompted to start Siglos Audio Processor, that allows to mix your recorded singing with the music, producing the file you may email your friends or write to CD.

Playing

Siglos Karaoke Professional allows to play CD+G karaoke discs and files from the hard disc.

To start the playback of the song:

- click Load File button () (this allows to play files from the hard disc)
- click Load CD button () (this will play CD+G disc)
- double-click the song on the playlist
- drag-and-drop the file on Siglos Karaoke Professional window


Siglos Karaoke Professional supports the following file formats:







File extension	Description
.cdg	Also known as MP3+G. CDG files are usually paired with MP3 files. CDG file contains lyrics, while MP3 file contains audio of the song. To open a pair of MP3/CDG files you need to open CDG file only
.bin	BIN files contain both lyrics and audio of CD+G song
.zip	Karaoke ZIP files contain pairs of CDG/MP3 files
.cda	CD+G disc tracks
.kar, .mid	MIDI Karaoke
.avi	AVI video files
.mpg	MPG video files
.kma	MTU's Hoster files
.wmv	Windows Media Video files

Once the file is loaded its name and playing time will display in the status bar.



You may now use transport buttons to control the playback.

Button	Command	Shortcut	Description
	Play	P	Start the playback

	Pause	S	Pauses the playback (and recording, if active)
	Stop	A	Stops the playback
	Previous song	<	Plays the previous song from the playlist or CD+G disc
	Rewind		Moves 10 second backwards (<i>NOTE: does not work with CD+G discs</i>)
	Fast forward		Moves 10 second forward (<i>NOTE: does not work with CD+G discs</i>)
	Next song	>	Plays the next song from the playlist or CD+G disc

Changing key

Siglos Karaoke Professional allows you to adjust the song you are playing to better suit your voice by changing the key of the song. To do this use key changer slider.




Key changer section allows to change the pitch tone of the song up to twelve semitones either up or down. The current key change is displayed next to the key changer slider.

NOTE: Please note that pitch shifting may slightly reduce the quality of the music. It gives better results for instrumental parts and worse for human voice.

NOTE: Key changer does not work for MIDI karaoke.

Full screen mode

Full screen () button (or **F** key on the keyboard) allows you to display the karaoke window on full extent of your monitor. To leave the full screen mode press F key again (or press ESC).

If you click left mouse button in the **Full Screen** mode the Siglos Karaoke Professional window will appear on top of the display. You may hide it by clicking **Full Screen** again.

If you have two monitors attached to your computer you may display the karaoke lyrics in the other monitor while continuing to use the Siglos Karaoke Professional window on the main monitor (this is particularly useful if you have TV or large display connected to your computer). Siglos Karaoke Professional will automatically detect second monitor, but if it does not go to **Settings** and select **Use secondary monitor** under **Display** settings. If this still does not work please see Troubleshooting.

Multiplex

Siglos Karaoke Professional allows you to play multiplex CD+G discs. Multiplex is a special type of CD+G karaoke disc -- there are two tracks for each song on the disc, one track in karaoke format and the other track with the lead vocals so you can learn the song.


Siglos Karaoke Professional allows to turn on and off the lead vocals during playback using Multiplex slider.



This gives you the opportunity to turn off the lead vocals as needed.

Background images


Siglos Karaoke Professional displays images behind the karaoke lyrics. To change the images or use solid

background click **Settings** button () and select **Display**. Siglos Karaoke Professional has three background modes:

- Solid color background (choose a color for MIDI karaoke, for CD+G the background color from the file will be used)
- Gradient background (smooth transition from the color at the top to the color at the bottom)
- Image slideshow (you may define images to be used in the slideshow, select the display time of the single image, and choose to display the images in the random order)

You may also choose an image to be displayed instead of default black background on the playback screen. This may be your logo or some other information. To do this select image to display using [...] button in **Inactive background** section.

MIDI Karaoke display

You may change the way that MIDI karaoke songs are played. To do this click **Settings** button () and select **Display**.

You may change the font used for MIDI karaoke lyrics, change the number of lines on the screen, and define the lyrics location (top, bottom, or middle of the screen).

Changing key

Siglos Karaoke Professional allows you to adjust the song you are playing to better suit your voice by changing the key of the song. To do this use key changer slider.



Key changer section allows to change the pitch tone of the song up to twelve semitones either up or down. The current key change is displayed next to the key changer slider.

NOTE: Please note that pitch shifting may slightly reduce the quality of the music. It gives better results for instrumental parts and worse for human voice.

NOTE: Key changer does not work for MIDI karaoke.

Using Multiplex CD+Gs


Siglos Karaoke Professional allows you to play multiplex CD+G discs. Multiplex is a special type of CD+G karaoke disc -- there are two tracks for each song on the disc, one track in karaoke format and the other track with the lead vocals so you can learn the song.

Siglos Karaoke Professional allows to turn on and off the lead vocals during playback using Multiplex slider.



This gives you the opportunity to turn off the lead vocals as needed.

Full screen mode


Full screen () button (or **F** key on the keyboard) allows you to display the karaoke window on full extent of your monitor. To leave the full screen mode press F key again (or press ESC).

If you click left mouse button in the **Full Screen** mode the Siglos Karaoke Professional window will appear on top of the display. You may hide it by clicking **Full Screen** again.

If you have two monitors attached to your computer you may display the karaoke lyrics in the other monitor while continuing to use the Siglos Karaoke Professional window on the main monitor (this is particularly useful if you have TV or large display connected to your computer). Siglos Karaoke Professional will automatically detect second monitor, but if it does not go to **Settings** and select **Use secondary monitor** under **Display** settings. If this still does not work please see Troubleshooting.

Background images


Siglos Karaoke Professional displays images behind the karaoke lyrics. To change the images or use solid

background click **Settings** button () and select **Display**. Siglos Karaoke Professional has three background modes:

- Solid color background (choose a color for MIDI karaoke, for CD+G the background color from the file will be used)
- Gradient background (smooth transition from the color at the top to the color at the bottom)
- Image slideshow (you may define images to be used in the slideshow, select the display time of the single image, and choose to display the images in the random order)

You may also choose an image to be displayed instead of default black background on the playback screen. This may be your logo or some other information. To do this select image to display using [...] button in **Inactive background** section.

MIDI Karaoke

You may change the way that MIDI karaoke songs are played. To do this click **Settings** button () and select **Display**.

You may change the font used for MIDI karaoke lyrics, change the number of lines on the screen, and define the lyrics location (top, bottom, or middle of the screen).

Recording

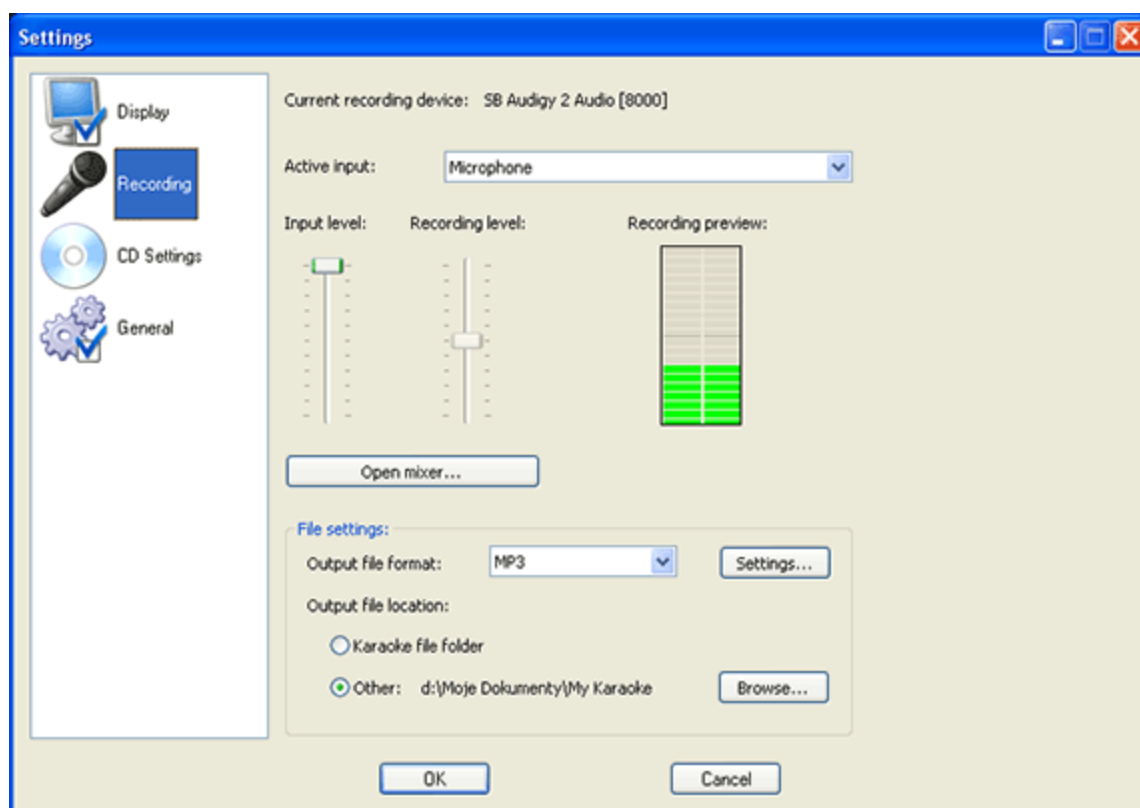
Siglos Karaoke Professional allows you to record your voice as you sing along. Before you begin recording we suggest that you review your recording settings.


Recording settings

Before you start please make sure that you have microphone connected to your computer. The microphone input is usually pink on your soundcard panel at the back of your computer. If you have more than one

soundcard in your computer please choose the one you wish to use in Windows' Control Panel/Sound and audio devices/Audio as a default recording input.

To adjust recording settings choose **Settings** () button and then choose **Recording**.



You will see the name of the active recording device (soundcard) and the active input. You may need to change the input to the microphone. Now test the recording level -- say something to the microphone and **Recording preview** should display the green bar. You may use **Input level** slider to adjust the level of the recording -- if it is too low you will not hear it and if it is too high it will distort. You may also control the recording level using **Recording level** slider () of the main Siglos Karaoke Professional window.

If you cannot hear what you are saying to the microphone you may need to enable microphone output on your soundcard. To do this click **Open mixer** button and standard Windows' mixer will appear. Now make sure that **Microphone** input is not muted (if you cannot see it choose **Options/Properties** and check the enable to microphone input).


File settings section allows you to select the format that Siglos Karaoke Professional will use to save your voice. MP3 is selected as default. You may also define where the file with your voice will be stored -- but default Siglos Karaoke Professional creates **My Karaoke** subfolder under **My Documents**.

Sing away!

Now you are ready to sing. Click **Record** () button and sing the song. Recording stops when the song finishes or when you click **Stop** button.

*Note: **Pause** button does not work while recording.*

Listen to yourself

If you play a karaoke song that you have singed along to and recorded your voice, you will hear yourself singing, providing **Recorded vocal on/off** button () is enabled.

You may control the level of the recorded singing using **Recorded vocal level** slider.

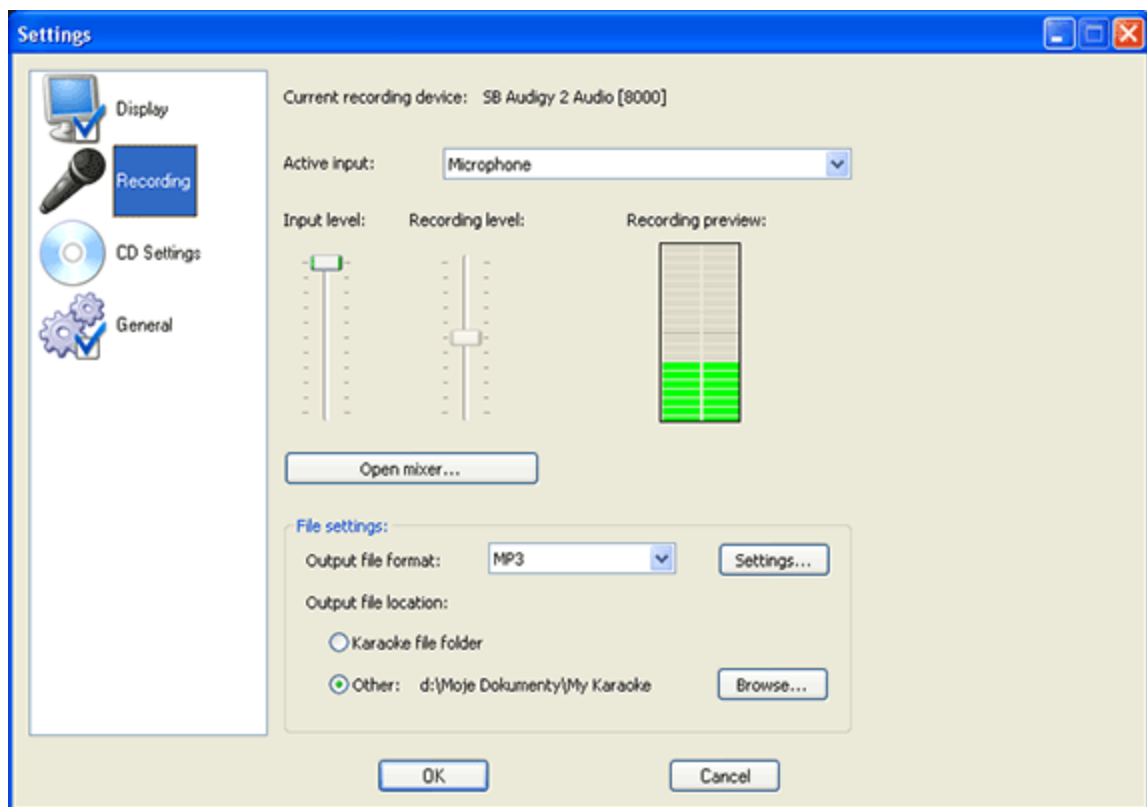



Please note that setting the recorded level to high may cause distortion.

Recording settings

Before you start please make sure that you have microphone connected to your computer. The microphone input is usually pink on your soundcard panel at the back of your computer. If you have more than one soundcard in your computer please choose the one you wish to use in Windows' Control Panel/Sound and audio devices/Audio as a default recording input.

To adjust recording settings choose **Settings** () button and then choose **Recording**.




You will see the name of the active recording device (soundcard) and the active input. You may need to change the input to the microphone. Now test the recording level -- say something to the microphone and **Recording preview** should display the green bar. You may use **Input level** slider to adjust the level of the recording -- if it is too low you will not hear it and if it is too high it will distort. You may also control the recording level using **Recording level** slider () of the main Siglos Karaoke Professional window.

If you cannot hear what you are saying to the microphone you may need to enable microphone output on your soundcard. To do this click **Open mixer** button and standard Windows' mixer will appear. Now make sure that **Microphone** input is not muted (if you cannot see it choose **Options/Properties** and check the enable to microphone input).

File settings section allows you to select the format that Siglos Karaoke Professional will use to save your voice. MP3 is selected as default. You may also define where the file with your voice will be stored -- but default Siglos Karaoke Professional creates **My Karaoke** subfolder under **My Documents**.

Listening to your singing

If you play a karaoke song that you have singed along to and recorded your voice, you will hear yourself singing, providing **Recorded vocal on/off** button () is enabled.

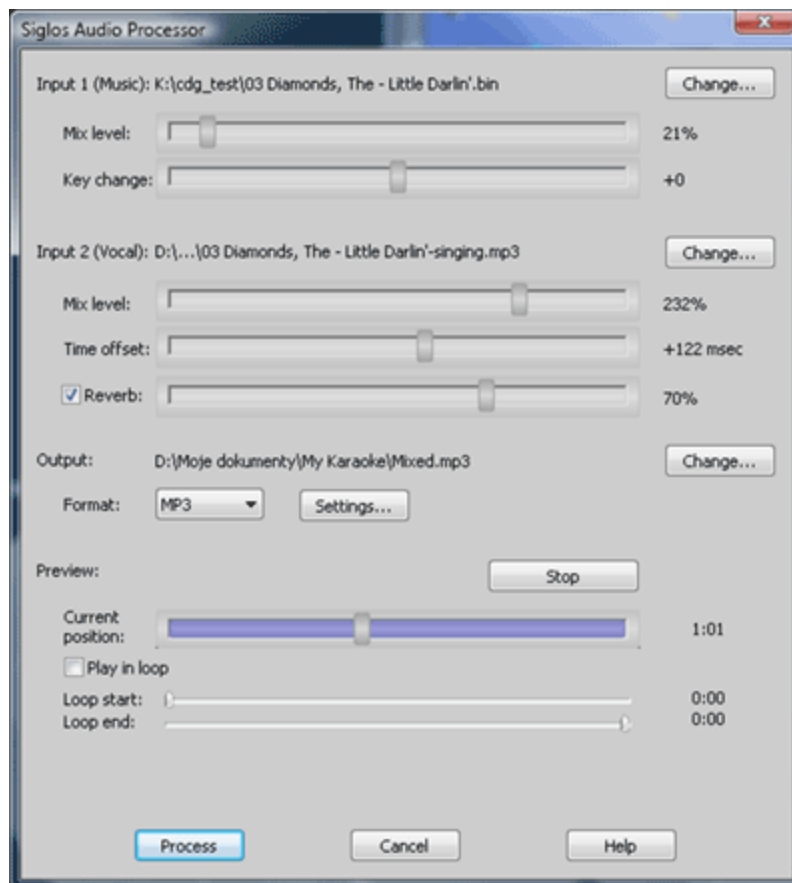
You may control the level of the recorded singing using **Recorded vocal level** slider.



Please note that setting the recorded level to high may cause distortion.

Audio Processor

Siglos Audio Processor allows you to mix your voice with the music and create an MP3 file you may share with your friends.



Siglos Audio Processor may be run automatically after recording is finished, or you may choose to start it anytime using **Siglos Audio Processor** command from **Record** menu. It requires two input files: music

(usually your backing track), and vocal (your recorded singing). Music may be BIN, WAV, or MP3 file, and vocal may be MP3 or WAV.

Note: Siglos Audio Processor will not work with MIDI karaoke (MID and KAR), and with tracks from CD+G disc. If you would like to process songs from CD+G discs you need to save them to your hard disc first.

For both music and vocal you may adjust **mix level** -- the higher it is the louder will it sound in the result file. Please note that choosing to high mixing levels may result in audio distortion.

Key change is used if key changer was enabled when you recorded your singing.

Time offset allows to compensate for sound card recording latency -- if your singing is out of sync with the music you may use this slider to fix it.

Reverb adds a reverb to your voice. You may switch it off or modify its intensity.

Siglos Audio Processor may save the result to MP3 file (you may adjust compression parameters using **Settings** button) or to WAV file. The name and location of the output file may be changed in **Output** section.

Preview section allows to listen to the processing results before processing the entire file.

To hear what the processed song would sound like click **Play result** button. The playback will start -- **Current position** slider represents the playback position. You may move it by dragging the slider's thumb. To hear the original song click **Play original** button -- you may switch between result and original song.

You may modify the settings during playback -- you will hear the change nearly immediately.

If **Play in loop** is selected, the playback will start over after it has reached the end. You may use **Loop start** and **Loop end** sliders to define the part of the song you would like to listen to.

Using playlists

Siglos Karaoke Professional gives you a simple way of managing the songs but the means of the playlists. Playlist window is displayed below the main Siglos Karaoke Professional window (its position and size may be changed).



Playlist is automatically filled when you select **Load CD** button. Siglos Karaoke Professional will try to connect to online FreeDB database to retrieve song names, and will display them in the playlist if successful.

Currently played song is printed in red. You may play a different item from the playlist by double-clicking it. To add a file to the playlist use **Add files** button or drop files on the playlist. To add the content of entire directory use **Add directory** command from **File** menu. You may select **Recurse** to include subdirectories.

To change the order of the file drag it and drop to the desired position.

Playlists can be saved and reloaded. Their file extension is CDP and are compatible with playlist from Power CD+G Player Pro.

If you have large playlist you may want to search for songs. To do this click **Search** button or press **F3**.

Main window controls



Getting karaoke songs

Internet is full of MIDI karaoke files and Siglos Karaoke Professional provides a simple tool to help you find them.

To start MIDI karaoke web search select **Search for karaoke on the Internet** command from **Tools** menu.



To start the search you need to provide artist name and the title of the song. Note that the song title does not have to be complete -- you may enter just first couple of words.

Search engine combo allows you to change the place that you will use to search for files. You may try changing search engine if you are not getting the results you need.

Clicking on **OK** button will open the search in your web browser. Once you find the file save it to your hard disc and open it later using **Load file** button.

Disclaimer: Doblom does not provide MIDI karaoke files. They are provided by various websites that are not affiliated with us.

Settings

To open **Settings** dialog box click **Settings** () button or select **Settings...** from **File** menu.

Settings are divided into following sections:

- Display
- Recording
- CD
- General
- Skins
- KJ

Display

Display settings controls the way karaoke lyrics are displayed.

Display section

Quality defines number of frames per setting for the karaoke display. If you are working on a slower machine try decreasing this value to get better performance.

If **Use secondary monitor** is selected and your computer is equipped with two monitors, full screen mode will use the second monitor. You may choose which monitor should be used in the full screen mode.

Keep 4:3 aspect ratio ensures that karaoke display always has 4:3 ratio. If you are using wide screen monitor, or a monitor in portrait mode, this will add black bars to the sides so the karaoke display has the same proportions as regular TV screen.

Start in Full Screen mode causes Siglos Karaoke Professional to start in full screen mode.

Lyrics advance allow to display CD+G lyrics ahead of the music. The value is in milliseconds, so setting it to 500 will cause the lyrics to appear half a second earlier. Negative value will cause the lyrics to be delayed.

Background section

Siglos Karaoke Professional has three background modes:

- Solid color background (choose a color for MIDI karaoke, for CD+G the background color from the file will be used)
- Gradient background (smooth transition from the color at the top to the color at the bottom)
- Image slideshow (you may define images to be used in the slideshow, select the display time of the single image, and choose to display the images in the random order)
 - **Keep aspect ratio** option will ensure that images will not be stretched out of proportions (ie. portrait images will have black strips added to their sides so they look proportionally)
- Video allows to play the video file at the background
- Camera puts the input of the camera behind the lyrics

You may also choose an image to be displayed instead of default black background on the playback screen. This may be your logo or some other information. To do this select image to display using [...] button in **Inactive background** section. Inactive background can also be a video file or camera input.

MIDI section

You may change the font used for MIDI karaoke lyrics, change the number of lines on the screen, and define the lyrics location (top, bottom, or middle of the screen).

International character support

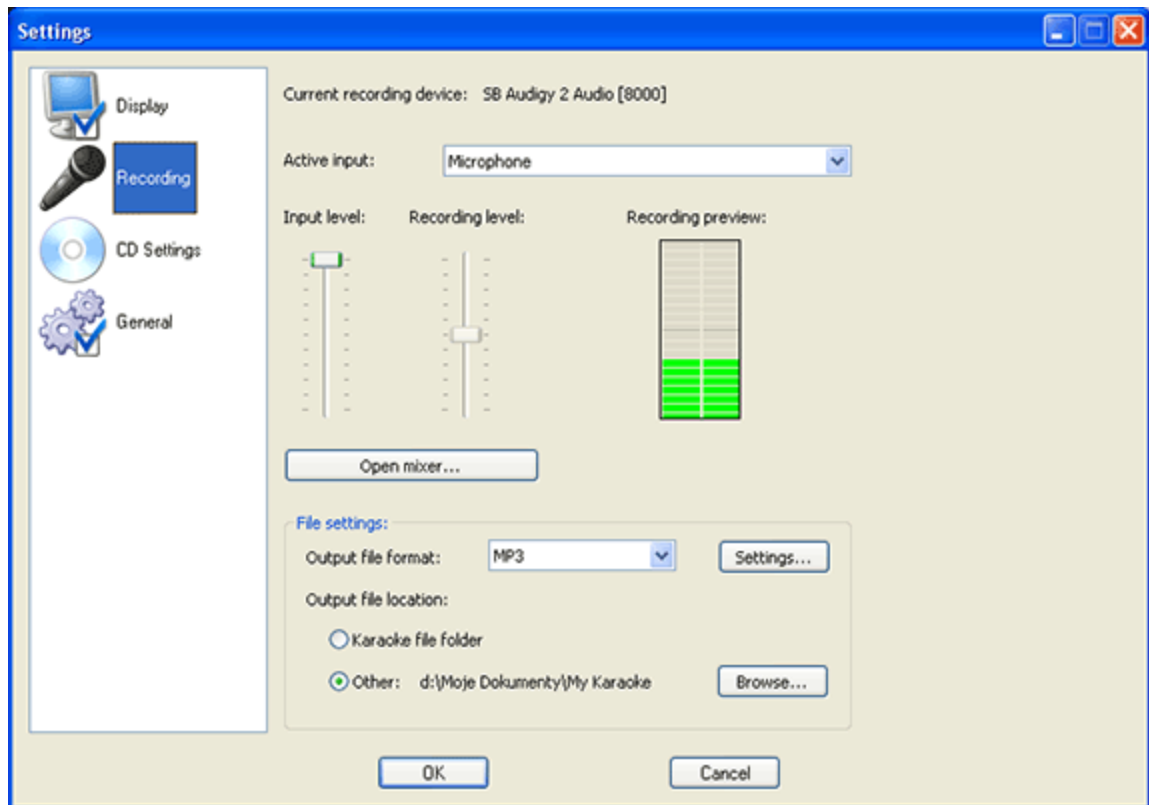
If Siglos Karaoke Professional incorrectly displays MIDI files containing international characters (eg. Chinese), please make sure that you select appropriate script and font face that contains international characters.


Recording

Recording settings control the recording process used in Siglos Karaoke Professional.

Before you start please make sure that you have microphone connected to your computer. The microphone input is usually pink on your soundcard panel at the back of your computer. If you have more than one soundcard in your computer please choose the one you wish to use in Windows' Control Panel/Sound and audio devices/Audio as a default recording input.

To adjust recording settings choose **Settings** () button and then choose **Recording**.



You will see the name of the active recording device (soundcard) and the active input. You may need to change the input to the microphone. Now test the recording level -- say something to the microphone and **Recording preview** should display the green bar. You may use **Input level** slider to adjust the level of the recording -- if it is too low you will not hear it and if it is too high it will distort. You may also control the recording level using **Recording level** slider () of the main Siglos Karaoke Professional window.

If you cannot hear what you are saying to the microphone you may need to enable microphone output on

your soundcard. To do this click **Open mixer** button and standard Windows' mixer will appear. Now make sure that **Microphone** input is not muted (if you cannot see it choose **Options/Properties** and check the enable to microphone input).

File settings section allows you to select the format that Siglos Karaoke Professional will use to save your voice. MP3 is selected as default. You may also define where the file with your voice will be stored -- but default Siglos Karaoke Professional creates **My Karaoke** subfolder under **My Documents**.

CD

CD settings allows to set various options that control the way CD+G discs are played.

CD-ROM device allows you to select which of the drives equipped in your machine should be used for CD+G discs.

Automatically load CD on startup will save you clicking **Load CD** button if you play CD+G discs.

Siglos Karaoke Professional can use online FreeDB database to look up track names for CD+G discs. You may disable this feature by unchecking **Use FreeDB to search for track names on the Internet**. You may also select different FreeDB server and define a HTTP proxy server if you are behind a corporate firewall.

General

These options control general behaviour of Siglos Karaoke Professional.

By default after one song finishes the next starts automatically. **Pause between the songs** disables this feature.

Remember last playlist will keep track of the files on the playlist between sessions.

If **Automatically play the playlist after loading** is switched on, then playlist will automatically start to play after it is loaded.

If **Check for updates** is enabled, then Siglos Karaoke Professional will prompt to check if new version is available.

You may associate Siglos Karaoke Professional with various karaoke file extensions so it is opened automatically when you double-click such file. You may choose which extensions should be associated with Siglos using extension list.

NOTE: Using Siglos as default ZIP file application is not recommended, as it will interfere with software like WinZip.

Skins

Siglos Karaoke Professional allows you to change the way the main window looks -- you may choose from several skins of various sizes.

KJ

Use professional KJ mode allows to switch between show hosting mode and basic player mode.

Edit singer announcement screen allows to adjust the look of the singer announcement screen. Singer Announcement Screen dialog box will appear.

Singer announcement duration in automatic mode defines the amount of time that the announcement screen is displayed before the song starts to play in automatic mode.

Siglos Karaoke Professional can show the scrolling message at the top or at the bottom of the karaoke screen. You may define the font, colors, location (top or bottom) and the speed of the scrolling message in **Scrolling message** section. You may also choose to display additional message after the usual singer reminder. **Number of singers to show** allows to define how many next singers will be displayed in the scrolling message (up to ten). **Use old style** will show the message on top of the currently played song, not on the separate black strip.

When **Countdowns** are enabled Siglos displays a timer that shows how much time next singer has before their performance starts, by default it changes color from green through yellow to red when time is up.

Preview screen update speed allows you to change the refresh rate of Preview window (the lower the value, the more frequently the window is repainted). Please note that preview window refresh uses additional CPU time.

Show remaining song time instead of current position will cause the time counter on the main player window to show the time left to the end of the song rather than current song position.

Skip silence at beginning/end of the song enables silence detection and allows Siglos Karaoke Professional to skip silent parts of the song (usually used for displaying CD+G company logo and song title). It works for MP3+G and ZIP files only.

Rotation / Playlist font section allows you to change the font and the size of the text in Playlist / Rotation lists. You may also define colors used for active and disabled items.

'Add Singer' list font modifier allows you to increase (or to decrease if desired) the size of the font used in lists of **Add Singer/Song** dialog box.

If you are adding a new singer of the name that already exists in the singer database, Siglos Karaoke Professional will ask you to choose one of the options. You may define the default action to be taken using **If adding singer of the same name** section (see Adding Singers for more information)

Time display in Rotation list allows you to choose which time-related columns should be displayed in rotation list. **Next** column contains estimated time the singer will be on stage. **Last** displays the last time the singer was on stage. **In** column contains the time singer or song was added

If fill-in playlist contains songs, Siglos Karaoke Professional will play the first song when it opens if **Initiate fill-in playback on program start** is enabled.

Detect commas in artist names may be used to fix artist names in sortable format (with artist name or The part after comma). So **Adams, Brian** will be displayed as **Brian Adams**, and **Beatles, The** will be **The Beatles**. This affects only singer announcement screen and scrolling message, database listing will not be changed.

Include track number in 'Add Singer' song search allows to search for the tracks by their number on the original disc. The same goes for **Include Song ID ...** and **Include file path ...** .

Number of characters to start interactive search specifies how many characters need to be typed in the general search box before the results are updates (setting this to 1 may cause slow operation if you are running slower machine and your database is large).

Exit the program without prompting disables confirmation message on program exit.

Advance to next song on fill-in playlist every time fill-in is activated caused the playlist to skip to the next song every time playlist is active. This may be useful if you have many short breaks and do not want the audience to listen to the same song over and over.

Reset key to zero for songs not sung by the singer (by default latest key change for singer is used) allows to change the way key changer is set for new songs. By default Siglos Karaoke Professional remembers the key change for each singer and applies this for the new songs added for the singer. This may be undesired and with this option checked key will be reset to zero for all new songs. If you set the key for the song, it will be remembered and reset the next time singer sings the song.

With **Create backup database copies every 7 days** option enabled Siglos Karaoke Professional will create a copy of a database file once a week and store it in compressed file in case something happened to the working database.

Database file location makes it possible to change the database file used by Siglos Karaoke Professional. This may be useful if you move the database between computers or for some reason need to use more than one database.

Crossfade time when using Restart button defines the speed of silencing the music when **Restart** is clicked.

Force FFDSHOW filter usage tells Siglos to use FFDSHOW filter before trying other video codecs.

Use Standard renderer as fallback makes sure that if the selected renderer is not available, standard will be used instead of reporting an error.

When **Use old drag-and-drop behaviour** is enabled, dropped songs will be added to the playlist (regardless of the mode) instead of opening as a file in Add Singer window.

Display scrolling message when not playing karaoke ensures that the message is visible even when no song is playing (and singer announcement is displayed).

If **Show announcement screen even if no singer is in queue** is enabled, then singer announcement stays visible on screen and is not replaced by predefined empty screen.

Lock rotation windows when Add Singer is open does not allow any operations in main program window until you close Add Singer.

On new session start fill-in from the next song ensures that Siglos will not resume fill-in playback, but will jump to the new song on the fill-in list.

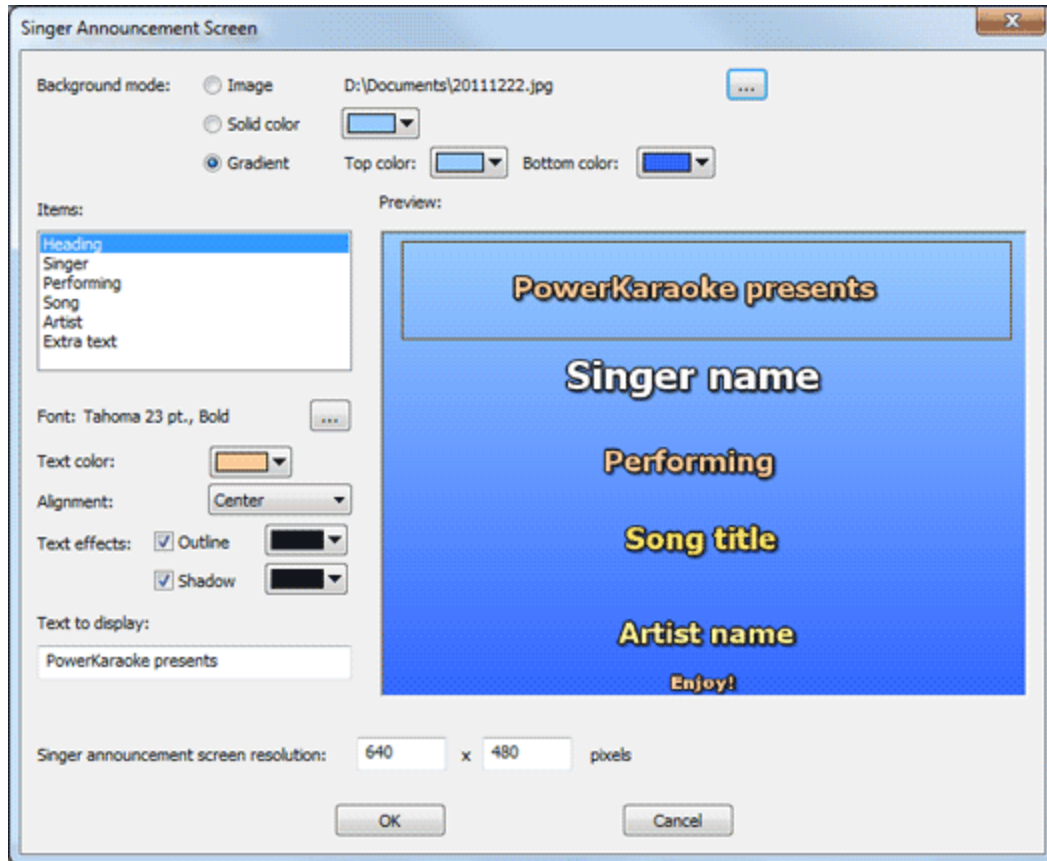
Overlay fill-in videos and visualizations with singer announcements displays singer announcements on top of visualization or video played from fill-in list.

Wait n seconds before allowing 'Go To Next' is a safeguard so you do not click Go To Next button accidentally after starting the playback.

When you enable **Always skip empty singers if 'Wait for songs' is selected**, Siglos will skip empty singers until all singers have sung their songs. Then it will wait for new songs.

Singer Announcement Screen

This dialog allows to define how singer announcement screen will look like.



Background mode defines the background of the screen. There are three background modes:

- **Image**: you may use an image as a background. Click [...] button to load the image (JPG, PNG, and BMP formats are supported). Images will be stretched to full screen.
- **Solid color**: background will be filled with the selected solid color
- **Gradient**: background will be filled with smoothly changing color, you may define the top and bottom colors.

Items list contains separate parts of the signer announcement screen.

Heading is the information text displayed at the top

Singer is the name of the coming singer

Performing is the Performing word after the singer name, it is not displayed if singer name is empty

Song and **Artist** are the song title and the artist name of the coming song

To change one of the items select it on the **Items** list -- a rectangle defining its area will be displayed in the preview area. You may modify the position of the item by dragging it with the mouse.

Font, **Text color**, **Alignment**, and **Text effects** define text attributes for the selected item. Changes are immediately visible in the preview area.

Text to display is the label text for pre-defined items (*Heading* and *Performing*). *Heading* is a good place to promote your show.

Keyboard shortcuts

F2	Search for karaoke on the Internet
F	Full Screen
Alt+Enter	
-	Key Down
+	Key Up
Ctrl+L	Load CD
Ctrl+O	Load File
;	Multiplex Left
'	Multiplex Off
\	Multiplex Right
[Volume Down
]	Volume Up
>	Next song
<	Previous song
P	Play
A	Pause
S	Stop
R	Record
Ctrl+P	Settings
F3	Search playlist
Page Up	Rewind
Page Down	Fast Forward

Professional mode:

F5	Start song / Go to next song
Ctrl+F5	Restart playing song
F6	Add Singer
F7	Song Database
F8	Import Songs
{	Tempo down
}	Tempo up

In song list

DEL	Remove song
Enter	Move song to next

In singer list

DEL	Remove singer
Enter	Move singer to next
Space	Add songs to singer
Ctrl+D	Disable singer

Supported file types

Siglos Karaoke Professional currently supports following types of files:

File extension	Description
.cdg	Also known as MP3+G. CDG files are usually paired with MP3 files. CDG file contains lyrics, while MP3 file contains audio of the song. To open a pair of MP3/CDG files you need to open CDG file only

.bin	BIN files contain both lyrics and audio of CD+G song
.zip	Karaoke ZIP files contain pairs of CDG/MP3 files
.cda	CD+G disc tracks
.kar, .mid	MIDI Karaoke
.avi	AVI video files
.mpg	MPG video files
.kma	MTU's Hoster files
.wmv	Windows Media Video files

Troubleshooting

I cannot run Siglos Karaoke Professional

I play CD+Gs and see no lyrics

I play CD+G discs and graphics are damaged

I cannot record my voice

My second monitor does not work with Siglos Karaoke Professional

If there are some other problems please contact technical support at support@powerkaraoke.com.

I cannot run Siglos Karaoke Professional

If you are unable to run Siglos Karaoke Professional please try updating your DirectX from Microsoft:

<http://www.microsoft.com/download>

I play CD+Gs and see no lyrics

Your CD-ROM may not be able to read CD+G data. If you have more than one CD-ROMs in your computer, please try the other device.

I play CD+G discs and graphics are damaged

Your CD+G disc may be scratched -- it downgrades the video quality. Some CD-ROM drives are better at reading damaged discs, so if you have more than one installed in your computer, please try the other one.

I cannot record my voice

Check if your microphone is connected properly. Use Recording settings to set up recording levels.

My second monitor does not work with Siglos Karaoke Professional

To install a dual display card such as ATI 9600, 8500 or 7500 or NVidia, read the manual that came with your card.

Always plug your TV monitor in and turn it on before turning your computer on. If not, your dual display card will come up in single-display mode.

If your card has an s-video output, you need an inexpensive s-video to VHS converter. Radio Shack has them.

With multiple monitors, one will be your Primary display (for you to operate by) and the other your Secondary display (for singers).

When running an ATI card on Windows XP Home, set your card to Extended Desktop Mode, not Clone Mode, which mirrors the pc display.

Enabling/Disabling the Secondary Display for ATI cards:

1. Access the Windows Control Panel, and double click Display
2. Click on the Settings tab and then the Advanced... button
3. Click on the ATI Displays tab (only appears if you have an ATI card installed)
4. Click the enable/disable button for the display device you want to enable/disable.
5. Click OK or Apply to save the changes.
6. IMPORTANT NOTICE: With Windows XP Home, an ATI card must be set (read the manual) to Extended Desktop Mode, not Clone Mode, which mirrors the pc display.
7. ALWAYS turn on and plug in your TV monitor to the dual-display video output before running Siglos Karaoke Professional. If not, your dual display card will come up in single-display mode.

Unlocking and evaluation

How do I unlock Siglos Karaoke Professional

To unlock Siglos Karaoke Professional you need to purchase the unlock code from Power Karaoke website. The unlock code will be delivered via email. Once you have it select **Unlock** from **Help** menu.

You will have to provide your name, email address used to purchase the unlock code, and the unlock code itself. If the unlock code is accepted all limitations will be removed and you will see your name in the About dialog box.

What are the limitation of the trial version

Trial version of Siglos Karaoke Professional has the following limitations:

- Only 3 songs from a CD+G disc can be loaded
- Banner will be displayed over the lyrics
- Only one minute of your singing will be recorded
- You will see the purchase prompt from time to time

© © 2020 Doblón.
All rights reserved.

Product and company names mentioned in this manual may be trademarks or registered trademarks of their respective companies.

Mention of third-party products is for informational purposes only and constitutes neither an endorsement nor a recommendation. The author assumes no responsibility with regard to the performance or use of these products. All understandings, agreements, or warranties, if any, take place directly between the vendors and the prospective users. Every effort has been made to ensure that the information in this manual is accurate. The author is not responsible for printing or clerical errors.

The product described in this manual incorporates copyright protection technology that is protected by method claims of certain U.S. patents and other intellectual property rights.

This user manual was created with Help & Manual.