

Sigma δ elta

Remote-Controlled Analogue Mix Engine

Upgrade Guide – A-FADA to δ elta-Control

Table of Contents

About this User Guide	3
Updating to Sigma δDelta	4
1. Update Sigma's Software	4
2. Install the Remote App	5
3. Install the δ Delta-Control Plug-ins	6
iLok	6
δ Delta-16 vs δ Delta-Single Plugin	7
δ Delta-Monitoring and δ Delta-Mix Bus	7
4. Installing the Sigma Remote Tablet app	8
5. Nucleus Remote Profile	8
6. Translating Sigma settings from Web Browser to Remote App	8
7. Translating Sigma v1.0.3.x automation to the δ Delta System	8
System Workflow tips	9
Boot Order	9
Channel Names	9
δ Delta Plug-ins	9
Sigma δ Delta Nucleus Profile	9
EuCon	9

Document History

82BMSUU1A	March 2016	Initial Release
82BMSUU1B	September 2016	δ Delta Hybrid Plug-in
82BMSUU1C	January 2017	δ Delta 16, Monitor and Mix Bus plugins

About this User Guide

This guide outlines the steps required to update your existing Sigma installation to the δ system and includes the translation steps needed to continue working on existing projects.

A-FADA refers to the Pro Tools (HUI), Logic (MCU), Cubase (MCU) and Live (MCU) protocols which remain available in the v1.0.3.x software.

The following table outlines the major differences and similarities between the 2 systems.

A-FADA v1.0.3.x	δ elta	Comments
Sigma is controlled, setup and updated from the web browser	Remote app replaces the web browser interface	<i>Web browser interface is still available but should be closed except when saving and loading presets</i>
First 16 DAW tracks control Sigma channel levels uni-directionally	Plug-in, Remote app and control surface have tri-directional control of Sigma channel levels	<i>If DAW control from Nucleus (or equivalent) is no longer required, the 2 MCU or HUI controllers in your DAW controller setup can be deleted.</i>
HUI/MCU Control surface controls first 16 DAW tracks and subsequently Sigma levels	Direct control of Sigma levels from SSL MCU controller, δ elta plug-in and Remote app	<i>Sigma requires a dedicated DAW layer on your controller</i>
Only Sigma channel levels can be automated from the DAW	Channel CUT is additionally available for automation from the DAW	
Sigma monitor controls are adjusted via front panel, web browser, midi controller or OSC	Sigma monitor controls are now adjusted via front panel, Remote app or midi controller. Monitor controls are also available from the Sigma controller layer and δ -Monitor plugin	<i>See page 8 for details on selected monitor controls from Nucleus</i>
Sigma channel names are derived from the corresponding DAW track	Sigma channel names are entered and edited in the Remote app and displayed on the corresponding δ elta plug-in GUI and control surface channel strip	
Sigma MIX A and MIX B levels are controlled using ipMIDI port 20 channels	Sigma Mix bus levels are controlled / automated by the δ -Mix Bus plugin	

For Pro Tools, Cubase, Nuendo, Logic and Ableton Live

A very powerful feature of Delta Control is that the plug-in stores its volume data in the track using the same dB law as the DAW fader volume data.

This means that the automation copy/paste edit commands in the above DAWs allow you to copy DAW fader automation into the δ elta-Control plug-in volume track, which will play out on the Sigma channels with an accuracy of better than 0.2 dB.

Other DAWs

Other VST, VST3, AU and AAX-compatible DAWs still allow Sigma δ elta to be automated from within the DAW. However, automation data that is copied and pasted from the DAW fader to the δ elta-Control plug-in fader will not be accurately translated.

Updating to Sigma delta

To update your system from the v1.0.3.x A-FADA system and continue working on current projects, you will need to carry out the following upgrade steps:

1. Update **Sigma's software** to Sigma delta
2. Install the **Remote app**
3. Install the **delta-Ctrl** plug-ins – Single or '16 version as appropriate, delta-Monitoring and delta-Mix Bus
4. Install **Sigma Remote Tablet app** – *optional*
5. Install **Nucleus Profile** – *only required if using an SSL Nucleus as a remote control surface*
6. Translate Sigma settings to the Remote app format
7. Translate DAW automation to the Delta format

1. UPDATE SIGMA'S SOFTWARE

From the **SETTINGS** tab, the **Software Update** button is used to update Sigma's internal software. The currently installed software version is shown below the button. *You will need to have the Ethernet cable connected to perform the update.*

- Login to your SSL account here: [User Login](#) and then select the **My Products** tab
- You will see a **Downloads** link next to your registered Sigma – download the **NK.bin** file
- Click on the **Software Update** button and locate the downloaded **NK.bin** file.
- Follow the on-screen instructions to install the update



2. INSTALL THE REMOTE APP

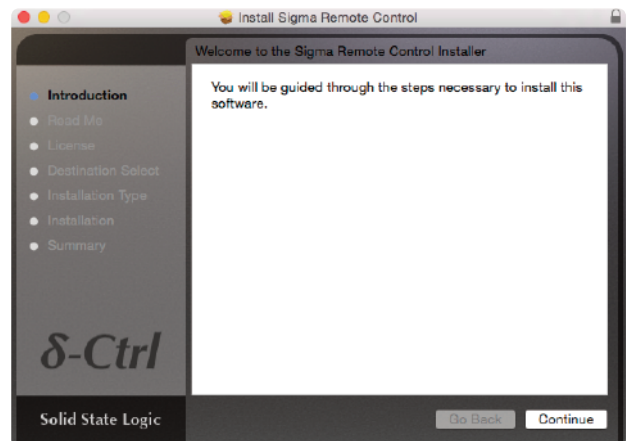
The Sigma Remote app is included as part of a package download. Packages are available for either Macintosh or Windows platforms. These packages also include the ipMIDI application, the plug-in installer, the Nucleus Remote profile as well as the latest version of the installation and operating instructions.

Depending on your setup requirements (refer to the following page for more information regarding the Delta plugin range), download either the **SSL Delta Control 16.dmg** disk image (Mac) or the **SSL Delta Control 16 Setup.zip** file (Windows), the **SSL Delta Control MixBus.dmg** (Mac) or **SSL Delta Control MixBus Setup.zip** (Windows) and the **SSL Delta Control Monitoring.dmg** (Mac) or **SSL Delta Control Monitoring Setup.zip** (Windows).

These files can all be downloaded from the SSL website: www.solidstatellogic.com, by logging-in to your user account and going to **My Products > Sigma Downloads**.

Remote App (Macintosh)

Open the disk image and then the **Sigma Remote Control.pkg**; follow the installation steps in the installer.



Remote App (Windows)

Open the zip file and run the **SSL Sigma Remote.exe** file; follow the installation steps in the installer.

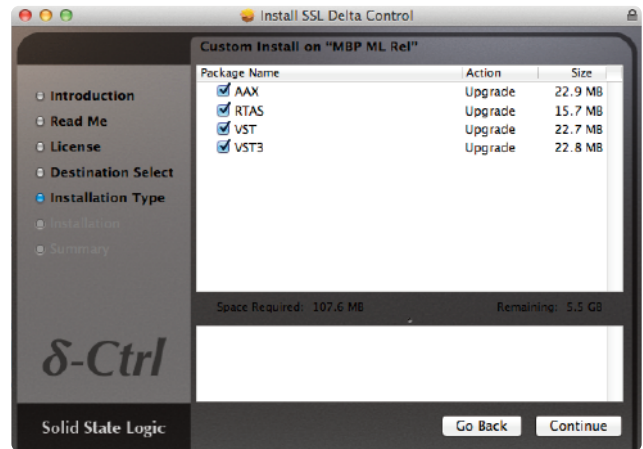


3. INSTALL THE ΔELTA-CONTROL PLUG-INS

Refer to Section 2, above for the package download information.

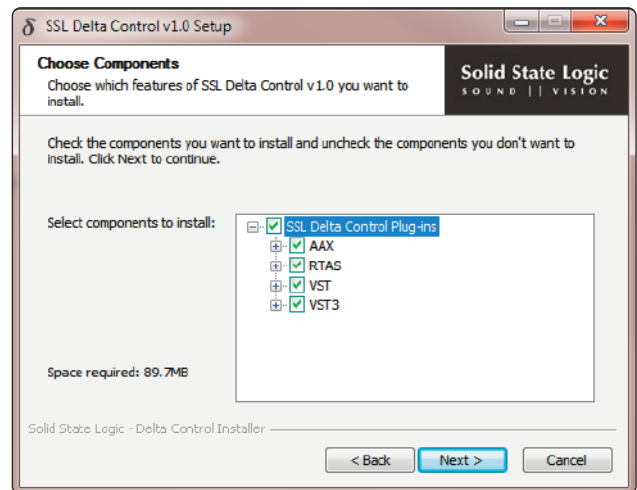
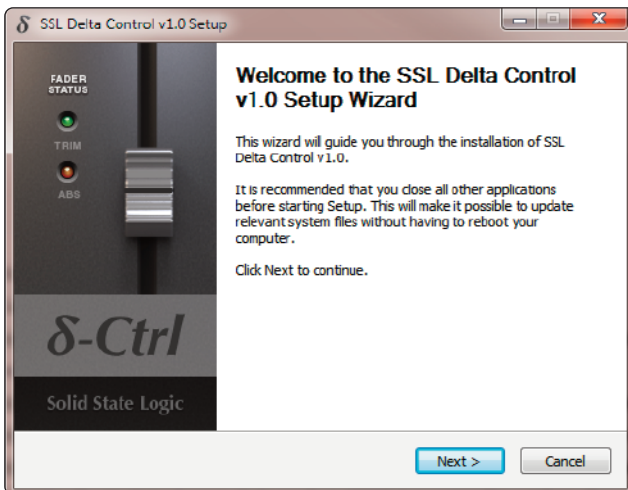
Δ-Ctrl Single Plug-in (Macintosh)

Open the disk image and mount the **SSL Delta Control Plug-in.pkg**; follow the installation steps as shown below:



Δ-Ctrl Single Plug-in (Windows)

Open the zip file and run the **SSL Delta Control Setup.exe** file; follow the installation steps as shown below:



iLok

The plug-in uses the industry standard iLok copy protection scheme – users will need an iLok2 USB key.

In the case of a new unit, 1 licence is included as standard, additional licences are be available from the SSL web store. Existing V1.0.3 customers will need to purchase a license from the SSL web store.

Δelta-16 vs Δelta-Single Plugin

The **Δelta-Single** plugin was derived from the Duality and AWS automation systems; an individual plugin for each channel of the console.

The **Δelta-16** plugin was designed to contain all 16 faders, pans and switches parameters for Sigma within one plugin instance.

Benefits of the Single Plugin

- The ability to enable/disable automation modes on individual channels of Sigma (when you write to one channel, the other channel can be in read/off mode).
- Easy to switch plugin to automate AWS/Duality channels

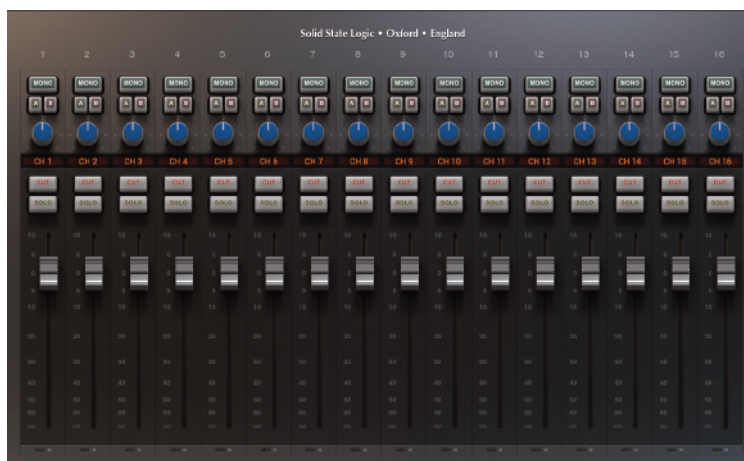
Benefits of the Δelta-16 Plugin

- Quicker to set up your session for automation
- Works within the control parameters set by Logic Pro
- Simpler workflow based around DAW automation system

Installation

The **Δelta-16 plugin** uses a separate installer from the 'Single' plugin; this can be found under the **Downloads** link for your Sigma. Run the installer and follow the same procedure described for the installation of the 'Single' version of Δelta.

We advise running only one type of Δelta plugin in each DAW session.



Your Sigma firmware and Remote browser will need updating to version 2.1.0 or above to work with all Δelta plugins.

Both Δelta-Single and Δelta-16 work with the same 'SSL Delta Plugin' iLok license

Δelta-Monitoring and Δelta-Mix Bus

For automating Sigma Mix Bus levels, or for direct control of your monitor section via the DAW (particularly using a EuCon surface), install the SSL Δelta-Control Mix Bus and SSL Δelta-Control Monitoring plugins.

The Δelta-Monitoring and Δelta-Mix Bus plugins have separate installers; both of which can be found in your SSL account under **My Products > Sigma Downloads**. Run the installer of your plugin and follow the process described on page 6.

Both Δelta-Monitoring and Δelta-Mix Bus work with the same 'SSL Delta Plugin' iLok license.

4. INSTALLING THE SIGMA REMOTE TABLET APP

The tablet app on iOS and Android is optional; the tablet app connects to the computer based Sigma Remote Application, allowing wireless control of the 'Master' and 'Channel' tabs for Sigma.

Tablet Requirements:

- iOS 9.0+ (iPad only)
- Android Marshmallow (v5)+ (Tablet only)

The iOS version of the app can be found in the Apple App store: 'Sigma Remote Control'

The Android version of the app can be found in the Google Play store: 'Sigma Remote Control'

Both apps are free to download.

Note. The Sigma Remote app must always be running on the computer for this setup to work correctly. Also, channel naming is not available on the tablet version of the app; this must be done from the computer remote application.

5. NUCLEUS REMOTE PROFILE

In the Nucleus Remote click on Edit Profiles to bring up the Profile Editor pop-up and click Restore. In the pop-up which appears, locate the file **Sigma Delta.zip** from the software download and click on Open. The restored profile will appear in the profile list which can be assigned to a Nucleus layer in the usual manner.

Note. You must have a working network connection between Nucleus and the DAW computer for these features to work

6. TRANSLATING SIGMA SETTINGS FROM WEB BROWSER TO REMOTE APP

Sigma settings stored with v1.0.3.x software or earlier can be recalled via the web browser using the Load tab. It is recommended to re-save the settings in the Remote App for further use.

7. TRANSLATING SIGMA V1.0.3.X AUTOMATION TO THE DELTA SYSTEM

If you have DAW projects that you wish to continue using with the delta system, the automation data must be translated to the delta plug-in in the DAW.

Pro Tools (HUI):

- View and select the track Volume automation data
- Edit > Copy (or Cut)
- Change automation view to SSL delta Control (Volume)
- Edit > Paste Special > To Current Automation Type
- Do this for each of the 16 Sigma channels

Cubase, Nuendo, Logic and Ableton Live:

- View and select the track Volume automation data
- Edit > Copy (or Cut)
- Change automation view to SSL delta Control (Volume)
- Edit > Paste
- Do this for each of the 16 Sigma channels

If you were using Sigma under the MIDI protocol for channel volume automation you will first need to translate the MIDI volume data to track automation. Most DAWs provide a way to do this. Please see your DAW documentation for specific instructions.

With the delta update completed, you will now have access to any Sigma settings made with the v1.0.3.x software via the web browser interface and be able to play back and edit stored automation.

System Workflow tips

This is a suggested workflow for the Sigma δ system.

BOOT ORDER

It is recommended to boot Sigma, the control surface and the Remote app *before* the DAW and δ Control plug-ins. If at any point Sigma, the control surface or the Remote App is closed/rebooted with the DAW and δ Control plug-ins open, the system should be booted from the start to ensure proper communication.

The Remote app must be open on your DAW PC/Mac for the Control Surface to communicate with Sigma δ .

CHANNEL NAMES

Contrary to the previous Sigma software (v1.0.3.x), channel names are no longer read from the DAW when the δ protocol is in use. You will notice that the NAMES: DAW button is greyed out in the Remote App in δ mode.

Channel names should be entered manually in the Remote App using the computer keyboard. When a δ Plug-in is assigned to that Sigma δ channel in the DAW, the channel name is displayed on the left hand side of the top panel.

δ DELTA PLUG-INS

It is recommended that these are inserted and assigned to a channel at the beginning of the session. Do not copy a plug-in to another insert slot once it has been assigned to a channel as this can disrupt the connection to Sigma. Using the auto-increment feature of the 'Single' plug-in is recommended. *Please refer to section 6 of the User Guide for detailed information on the δ -Control Plug-in.*

SIGMA δ NUCLEUS PROFILE

A Nucleus Profile is included in the software download package. This maps some Sigma controls to Nucleus switches for easy access from the control surface, as shown:

MIX A = F1	CUT = SAVE
MIX B = F2	ALT L/S = UNDO
DIM = ENTER	T/B = CTRL
MONO = ESC	

The MIX A and MIX B channel assignments are used in conjunction with the Nucleus SEL switch.

The talkback (T/B) function is non-latching.

An SSL Nucleus (or other compatible MCU controller) needs one of its DAW layers dedicated to Sigma. This is assigned in the Sigma Remote app.

If, for example, you want to use Nucleus DAW layer 2 to communicate with Sigma, ipMIDI ports 3+4 should be assigned to Channels 1-8 and 9-16 respectively in the Sigma Remote app.

EuCon

To control Sigma from a EuCon-based surface, please refer to section 6 of the User Guide.

Solid State Logic
S O U N D | | V I S I O N

Visit SSL at: www.solidstatelogic.com

82BMSUU1C

© Solid State Logic

All Rights reserved under International and Pan-American Copyright Conventions

Matrix, Nucleus, SSL and Solid State Logic are trademarks of Solid State Logic

All other product names and trademarks are the property of their respective owners and are hereby acknowledged

No part of this publication may be reproduced in any form or by any means, whether mechanical or electronic, without the written permission of Solid State Logic, Oxford, OX5 1RU, England

As research and development is a continual process, Solid State Logic reserves the right to change the features and specifications described herein without notice or obligation.

Solid State Logic cannot be held responsible for any loss or damage arising directly or indirectly from any error or omission in this manual.

E&OE