

Signal Transmission Loss due to Copper Surface Roughness in High-Frequency Region

Elaine Liew, Mitsui Copper Foil Malaysia, Shah Alam Malaysia
Taka-aki Okubo, Toshio Sudo, Shibaura Institute of Technology, Tokyo Japan
Toshihiro Hosoi, Hiroaki Tsuyoshi, Fujio Kuwako, Mitsui Kinzoku Co., Ltd, Japan

Abstract

Higher-speed signal transmission is increasingly required on a printed circuit board to handle massive data in electronic systems. So, signal transmission loss of copper wiring on a printed circuit board has been studied. First, total signal loss was divided into dielectric loss and conductor loss quantitatively based on electromagnetic theory. In particular, the scattering loss due to surface roughness of copper foil has been examined in detail. And the usefulness of the copper foil with low surface roughness has been demonstrated.

Introduction

Higher performance IT electronic systems are strongly required to handle huge amount of data in a shorter time in recent years. Transmission speed of the signals propagating inside the equipment has been increasing. Signal loss becomes remarkable on a printed circuit board in the GHz frequency range. It causes many problems, such as rising edge degradation of signals, or resulting higher bit error rate, and so on. Then, reducing the signal loss on a printed circuit board has become more important. Therefore, in this study, measurement of S21 has been carried out by fabricating various evaluation boards combining different copper foils with low roughness and low dielectric materials. And they were compared with the transmission loss of the commonly used material, FR-4. In particular, the reduction effect of signal loss has been demonstrated quantitatively by using copper foil with smooth surface roughness along with low dielectric loss material.

Signal transmission loss

Signal transmission loss on printed circuit boards can be classified into conductor loss due to the conductor and dielectric loss due to the dielectric. Then, total signal transmission loss can be expressed by two loss factors.

$$Loss = Loss_D + Loss_C \quad (1)$$

Where, $Loss_D$ is dielectric loss and $Loss_C$ is conductor loss. Dielectric loss is represented by the following equation (2).

$$Loss_D = 90.9 \sqrt{\epsilon_r} \times \tan \delta \times f \quad (2)$$

where, ϵ_r is relative permittivity, $\tan \delta$ is dielectric loss tangent, and f is frequency in GHz. Conductor loss can be divided into scattering loss caused by surface roughness and the skin effect loss. Then, it is represented by the formula (3).

$$Loss_C = Loss_H + Loss_S \quad (3)$$

where, $Loss_H$ is the loss due to skin effect, and $Loss_S$ is scattering loss. Current distribution is concentrated at the surface or the edge of the conductor at high frequencies. Skin depth δ is an index representing skin effect. Skin depth δ is defined by the distance where the current amplitude becomes 1/e times of the surface current amplitude in the conductor, and it is represented by the formula (4).

$$\delta = \sqrt{\frac{2}{\omega\mu\sigma}} \quad (4)$$

where, ω is angular frequency, μ is permeability, and σ is conductivity of copper.

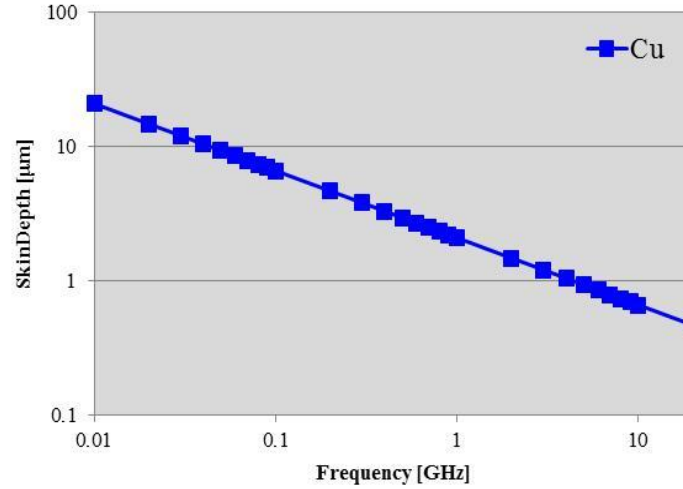


Figure 1 : Frequency dependency of skin depth for copper

Figure 1 shows frequency dependency of the skin depth in copper conductor. The skin depth is approximately 2.1 μm at 1 GHz. Effective cross-section area of the conductor for the current flow becomes restricted at high frequencies. Therefore, signal line impedance increases with the frequency. Signal loss due to skin effect is represented by the formula (5).

$$Loss_H = \frac{2.26 \times 10^{-8} \times \sqrt{f}}{W} \quad (5)$$

where, w is wiring width of conductor. Figure 2 shows a SEM image of cross-section of a printed circuit board. Usually, the surface of the conductor in printed circuit boards is intentionally roughened to enhance the adhesion to the prepreps. Typical surface roughness R_z of the copper foil commonly used in printed circuit board is 6 μm . This is a value greater than 2.1 μm of the skin depth at 1 GHz. Here, R_z is a ten-point average roughness of the surface. Because skin depth becomes smaller than surface roughness at high frequency, the scattering loss becomes prominent[1][2][4][5].

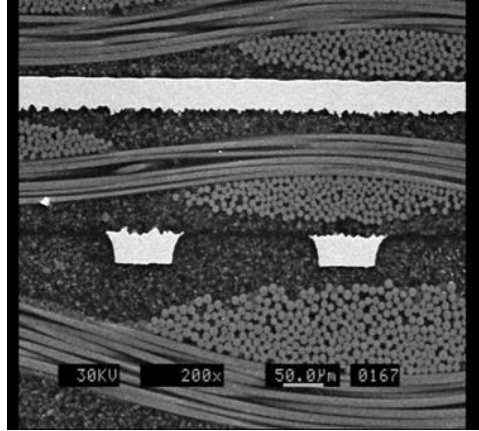


Figure 2 : Surface roughness of copper conductor

Configuration of the evaluation board

In order to investigate the relationship between the scattering loss and surface roughness of the conductor, various evaluation boards were fabricated by different surface roughness of copper foils. Evaluation boards were made of four conductive layers as shown Figure 3. In order to observe the difference in the transmission line structures, four types of transmission lines were designed in the board. They were single-ended microstrip line and strip line, and differential microstrip line and strip line. The characteristic impedance Z_0 for the single-ended transmission line was designed to 50 ohms, differential impedance was designed to 100 ohms. Moreover, three kinds of dielectric materials were examined. They were dielectric material G1 ($D_k=3.7$, $D_f=0.002$), dielectric G2 ($D_k=3.8$, $D_f=0.005$), and commonly used dielectric material, FR-4 ($D_k=4.4$, $D_f=0.02$). Former two materials were low dielectric materials.

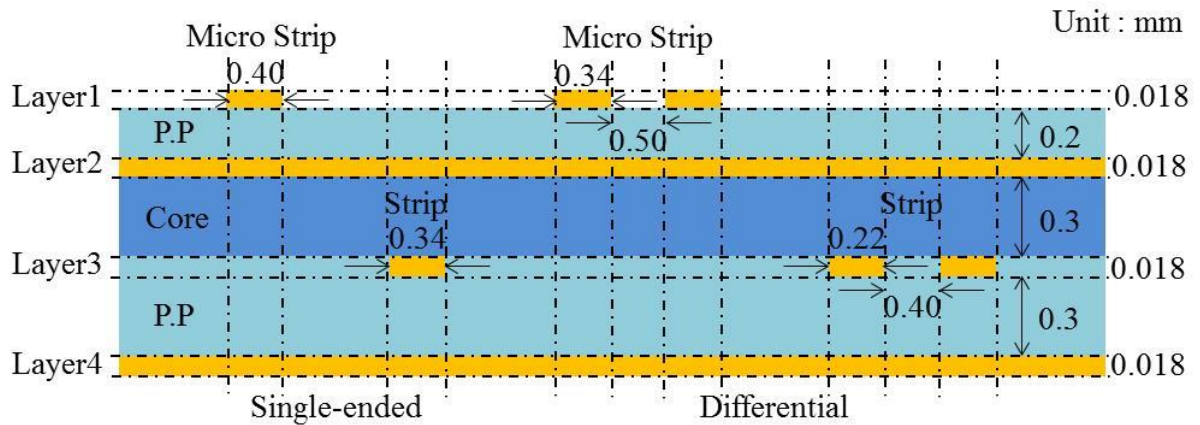


Figure 3 : Cross-section with 4 types of transmission lines

Further, the evaluation board included three kinds of trace length in order to compare loss dependency due to differences in trace length as shown in Figure 4. Trace length were 100, 200, and 300 mm, respectively.

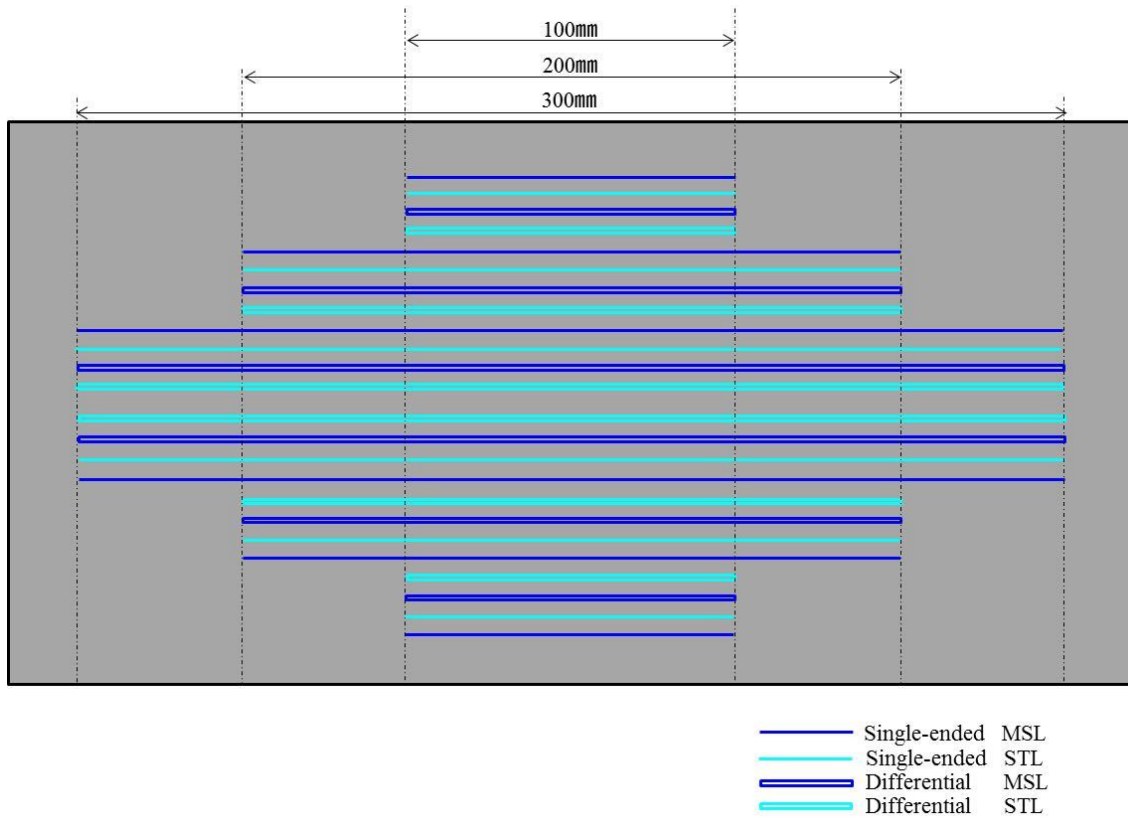


Figure 4 : Top layer layout of the evaluation board

Measurement result

S parameters were measured with a vector network analyzer (VNA: Agilent E5071C). The frequency range is from 300 KHz to 20 GHz. The evaluation boards were fabricated with different transmission line structures as shown in Figure 5. Either S_{21} or S_{dd21} was measured for 200 mm line for the dielectric material of G1. Measured signal loss was about -8 dB for the single-ended line. On the other hand, it was about -6 dB for the differential transmission line. It has been confirmed that the signal loss for differential transmission line is lower than the loss for single-ended transmission line. From this, it can be said that the differential transmission line is also useful to reduce the losses in high-speed signal transmission[1][2].

Also, evaluation boards were fabricated with different materials as shown in Figure6. Measured total signal loss was about -19 dB for FR-4. On the other hand, it was about -10dB for the dielectric G2, and about -8 dB for the dielectric G1. The loss of dielectric G1 was reduced by 68% compared with FR-4. It has been confirmed that the use of low dielectric constant material is necessary for high speed transmission.

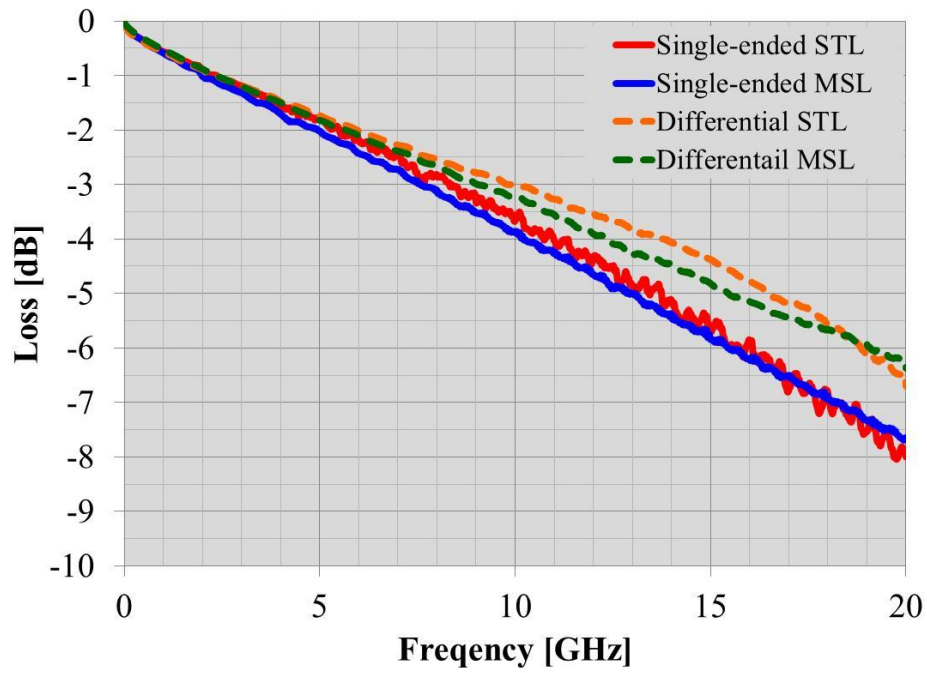


Figure 5 : Comparison of the signal losses of FR4 for the four different transmission structures

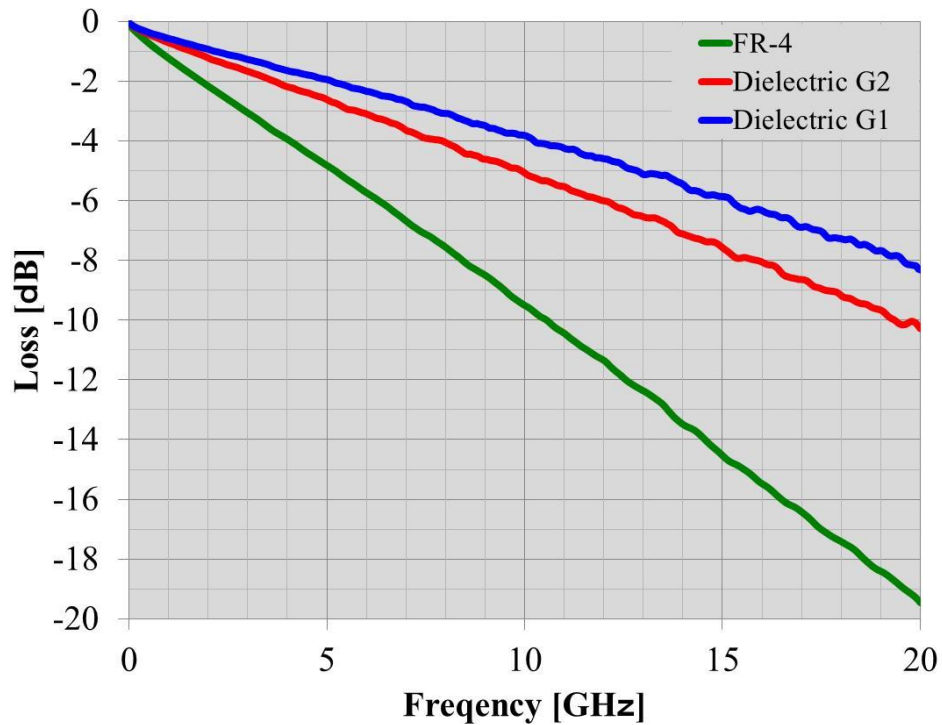


Figure 6 : Comparison of measured signal losses due to the difference of dielectric material

Decomposition of total loss into loss factors of copper and dielectric

Measured total signal losses for low dielectric constant materials were dramatically reduced, then the ratio of dielectric loss among total signal loss was decreased, and the ratio occupied by the conductor loss was relatively increased.

Next, the ratio of conductor loss and dielectric loss among the overall loss was examined. Total attenuation constant can be represented by the formula (6). As shown in the formula, the dielectric loss is proportional to the frequency, while the conductor loss is proportional to the square root of the frequency.

$$Loss = Loss_d + Loss_c = Af + B\sqrt{f} \quad (6)$$

In addition, equation (7) can be obtained by dividing the equation (6) by the square root of the frequency.

$$\frac{Loss}{\sqrt{f}} = A\sqrt{f} + B \quad (7)$$

Constants A and B are proportional coefficients of each loss. These values of constants A and B can be obtained by using the regression line obtained from the measured value of the S21.

The regression line was obtained by dividing the transmission line loss for FR-4 with the square root of the frequency as shown in Figure7. Furthermore, constants A and B were obtained from the slope and intercept of the regression line. In this case, the constant A was $-7.23E-10$ and the constant B was $-1.49E-5$.

The total loss for FR-4 was divided into dielectric loss and conductor loss by inserting the obtained constants A and B to the equation (6). Figure 8 shows that as a result of isolation conductor loss and dielectric loss for FR-4. Calculated overall loss showed good agreement with the measured loss.

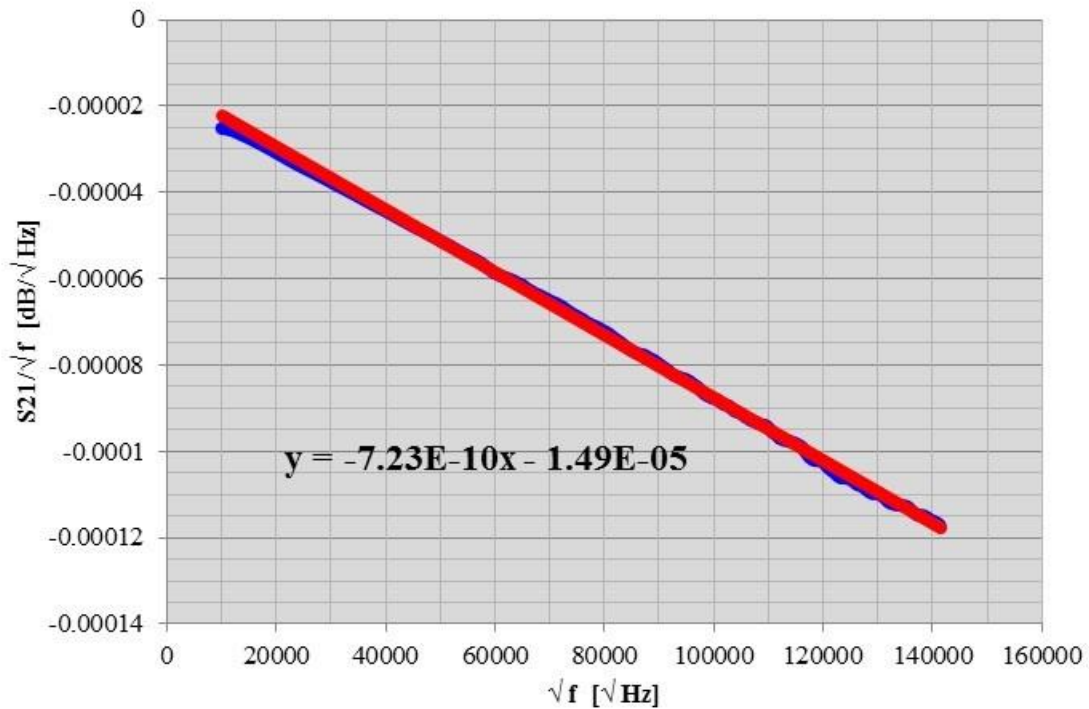


Figure 7 : The loss in the transmission line for FR-4

In the same method, the loss for dielectric G1 was divided into conductor loss and dielectric loss. Figure 9 shows that as a result of conductor loss and dielectric loss for dielectric G1. The ratio of the conductor loss to the total loss was about 13 % for FR-4 at the frequency of 20 GHz. However, the ratio of conductor loss to the total loss rose to approximately 30% in the case of dielectric G1 with a low dielectric constant. From this result, it can be said that reducing conductor loss is relatively more effective in reducing the overall loss when a low dielectric loss material is used. Therefore, the scattering loss as a part of conductor loss becomes more and more important in reducing the total signal loss in the high frequency region. Then, the surface roughness of copper foil has been examined in the next section.

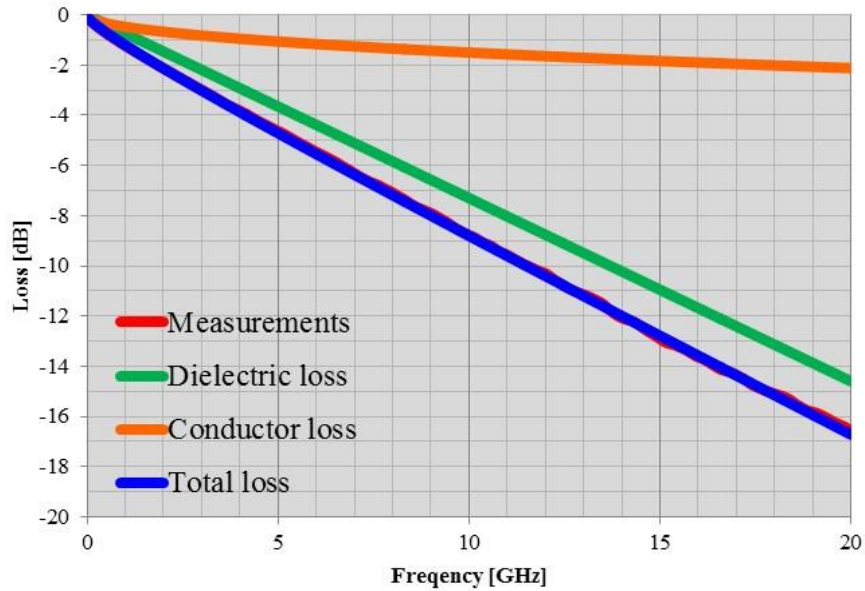


Figure 8 : Decomposing total loss into dielectric loss and conductor loss for FR-4

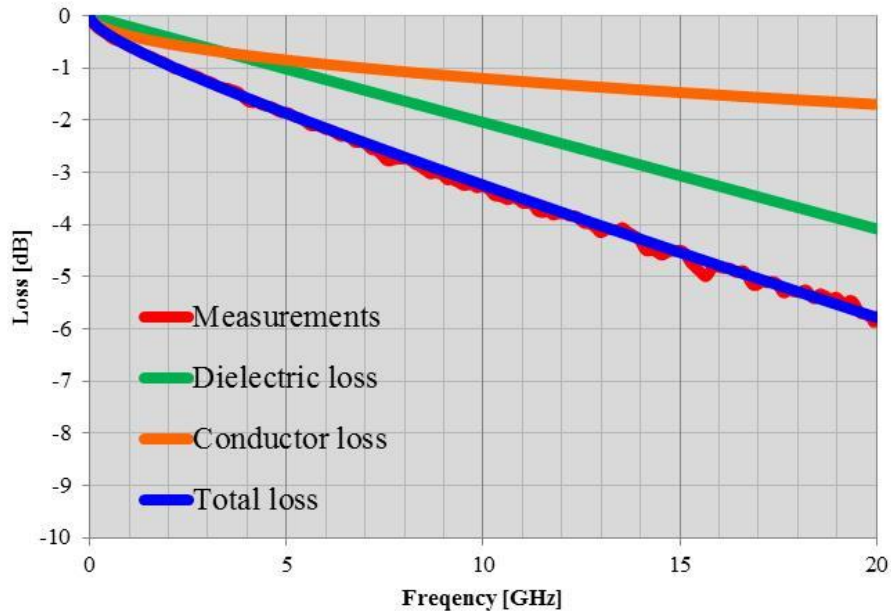


Figure 9 : Decomposing total loss into dielectric loss and conductor loss for dielectric G1

Surface roughness of copper foil

Figure 10 shows SEM images five types of copper foils examined. Surface textures of copper foils were different from each other. Roughening treatment is applied to surface of copper foils by depositing copper nodules. Figure 11 show schematic views of the surface roughened shape of each copper foils.

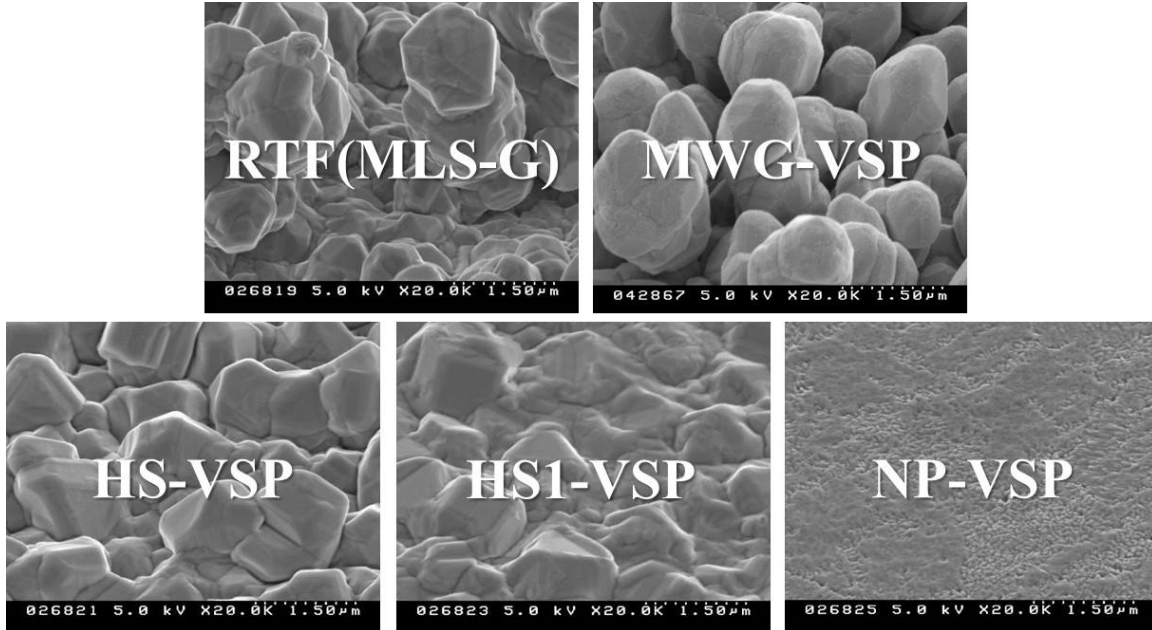


Figure 10 : SEM image for four types of copper foil ($\times 20K$)

In the photo of RTF, around 1.5 μm diameter sphere shape copper nodules are densely deposited on the “shiny” (drum) side of standard copper foil. Even the second story structure (nodule on nodule) is observed. MWG-VSP shows similar but more dense nodules on its surface. However, height of the sphere shape decreases and shift to hemisphere in HS- and HS1-VSP. NP-VSP is the copper foil with totally no nodule. Tall nodule is not acceptable for high frequency circuit as skin depth is smaller than radius of the sphere nodules at 10 GHz.

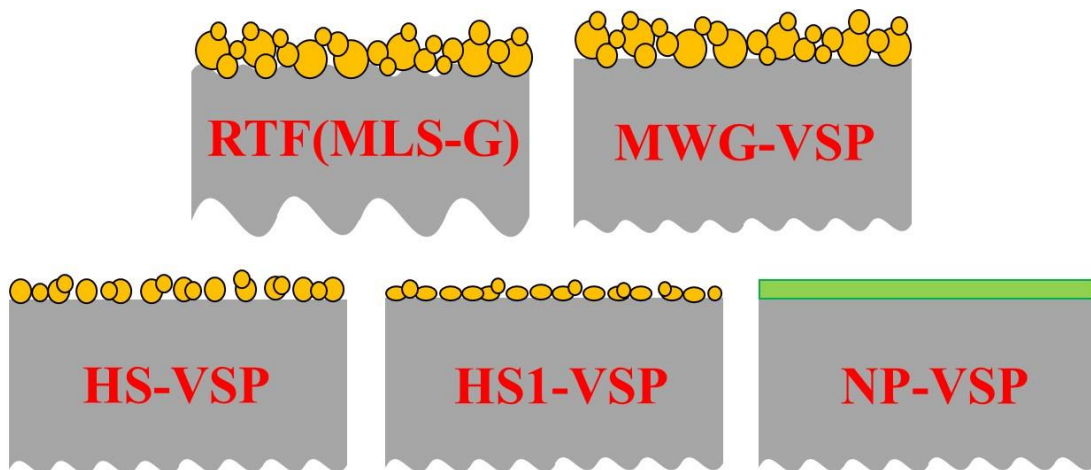


Figure 7 : Schematic views of the surface roughened shape of each copper foils

The surface roughness measured by a ten point average roughness Rz and root mean square roughness Rq were summarized in Tables 1 to 4. Bonding side is a surface which has nodules of copper. On the other hand, resist side is a surface which has no nodules. Two types of non contact profilometers, Confocal laser scanning microscopy (KEYENCE: VK-100) and scanning white light interferometer (Zygo: New View5032) were used. Comparison of surface roughness of each copper foils were shown in Figure 12 to 15.

Table 1 : Surface roughness Rz of the bonding side

copper foil	[μm]	
	Laser microscope	Zygo
RTF	3.95	4.21
MWG-VSP	3.75	3.86
HS-VSP	2.13	1.80
HS1-VSP	1.42	1.09
NP-VSP	0.19	0.29

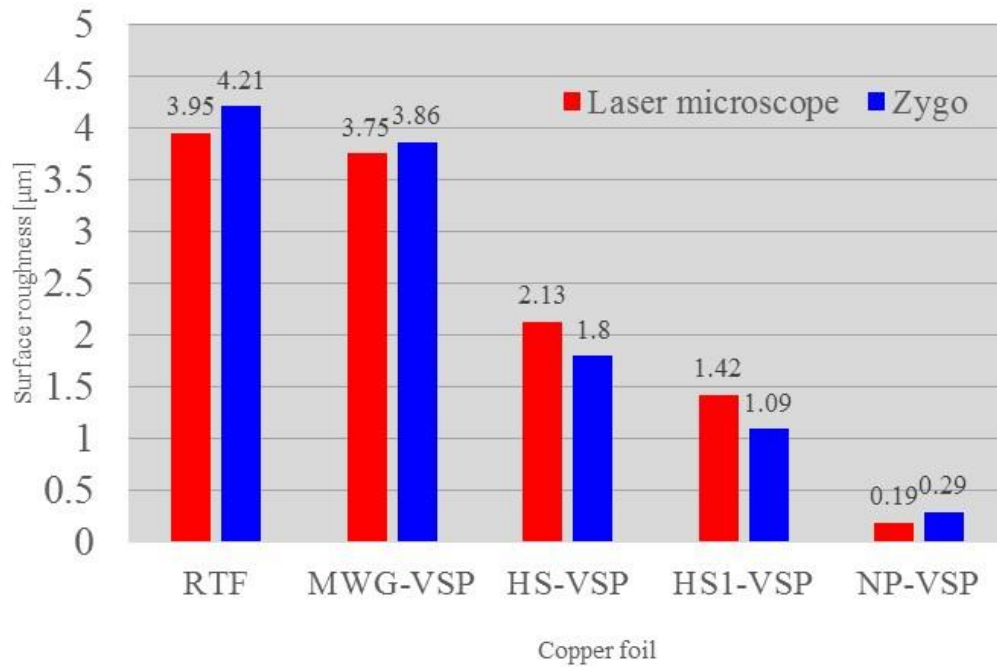


Figure 8 : Surface roughness Rz of the bonding side

Table 2 : Surface roughness Rz of the resist side

copper foil	Laser microscope	Zygo
RTF	2.49	3.13
MWG-VSP	0.99	1.21
HS-VSP	0.97	1.23
HS1-VSP	1.06	0.99
NP-VSP	1.25	1.15

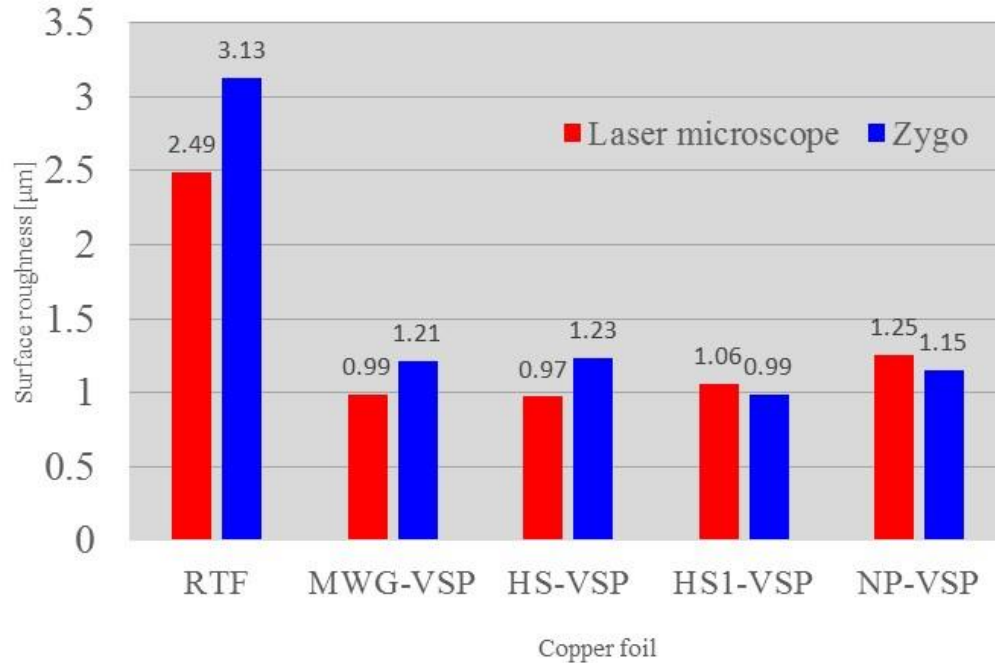


Figure 93: Surface roughness Rz of the resist side

Surface roughness of bonding side were RTF>MWG-VSP>HS-VSP>HS1-VSP>NP-VSP. The value of Rz of the foil HS1-VSP was about 26% compared with that of foil RTF. On the other hand, values of surface roughness of resist side were RTF>MWG-VSP=HS-VSP=HS1-VSP=NP-VSP. The reason is shown in Figure 11. The resist side of RTF was mat surface (solution side of standard copper foil) with wave. While the resist sides of the others were smooth (drum side) surface. The value of surface roughness of resist side for RTF was the largest in five types copper foil. This is the same with Rq as shown in Table 3 to 4, and Figure 14 to 15..

Table 3 : Surface roughness Rq of the bonding side

copper foil	[μm]	
	Laser microscope	Zygo
RTF	0.78	0.48
MWG-VSP	0.74	0.50
HS-VSP	0.35	0.22
HS1-VSP	0.24	0.12
NP-VSP	0.03	0.02

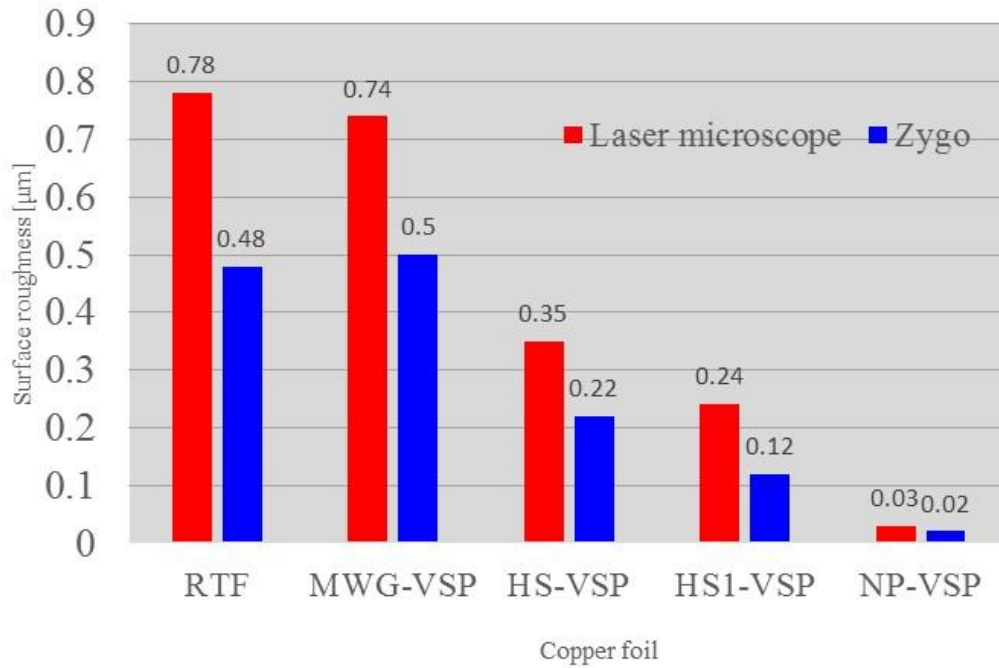


Figure 10 : Surface roughness Rq of the bonding side

Table 4 : Surface roughness Rq of the resist side

copper foil	Laser microscope	Zygo
RTF	0.51	0.42
MWG-VSP	0.18	0.16
HS-VSP	0.18	0.17
HS1-VSP	0.17	0.13
NP-VSP	0.22	0.12

[μm]

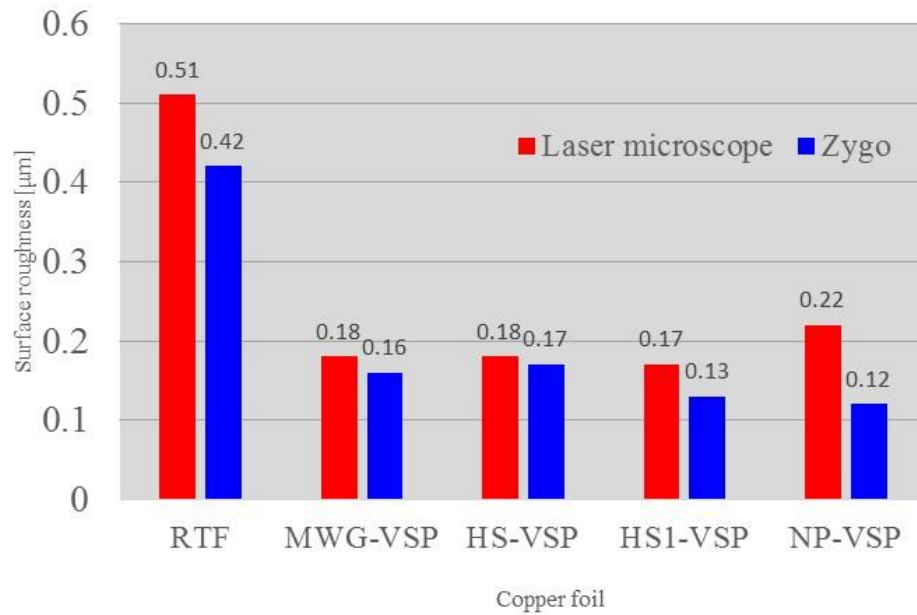


Figure 11: Surface roughness Rq of the resist side

Peel strength of low profile copper foil

As mentioned in previous paragraph, the bonding side surface of copper foil is densely covered with copper nodules. Lowering profile means the reduction of the height of the nodules. Bonding strength of copper foil relies on anchor effect and physical and chemical adhesion between copper foil and resin interface. Lowering the profile means reducing all these powers of bonding. Peel strength (P/S) is used to measure the bonding strength of laminate materials. Low P/S raises a concern of delamination during processing of PCBs. However, large and dense nodules are not acceptable for high frequency. Figure 16 explains two different approaches to improve peel strength without increasing surface roughness of copper foil.

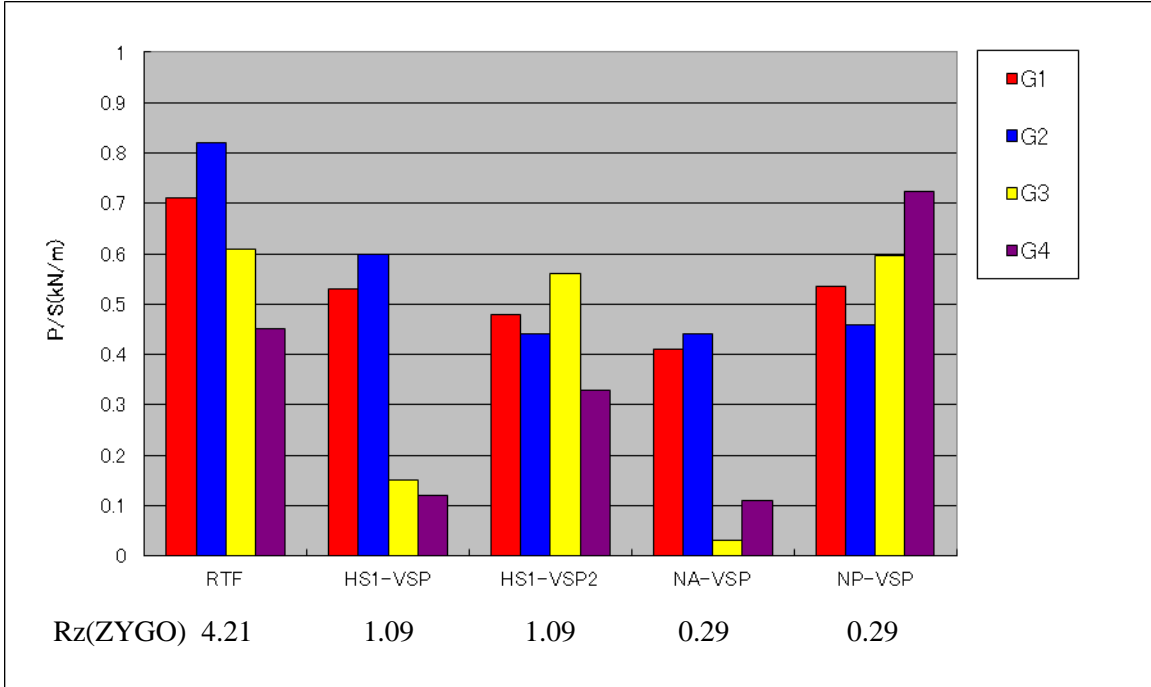


Figure 16: Peel strength of low profile copper foils with low loss laminate materials

G1, G2, G3, and G4 are industry available low loss laminate materials for high frequency circuit. HS1-VSP and HS1-VSP2 are both exactly same very low profile, but a new chemical bonding treatment was applied on HS1-VSP2. The treatment was very effective for G3 and G4 laminate. NA-VSP is totally no nodule copper foil with very thin resin coating as shown in Figure 14. The coating was extremely effective for improving P/S of G3 and G4. Effectiveness of the new chemical treatment and the thin resin coating were proven by this experiment.

Relationship between signal transmission loss and surface roughness of copper foil

Figure 17 shows the measurement of S21 for the single-ended strip line structure with line length 200 mm in dielectric G1. In addition, this figure shows the difference of losses due to surface roughness. The loss of the foil RTF in a frequency of 20 GHz was about -8.7 dB. On other hand, the loss of the foil NP-VSP in a frequency of 20 GHz was about -7.2 dB. It is confirmed that there was difference of signal loss about 1.5 dB between foil RTF and foil NP-VSP in a frequency of 20 GHz.

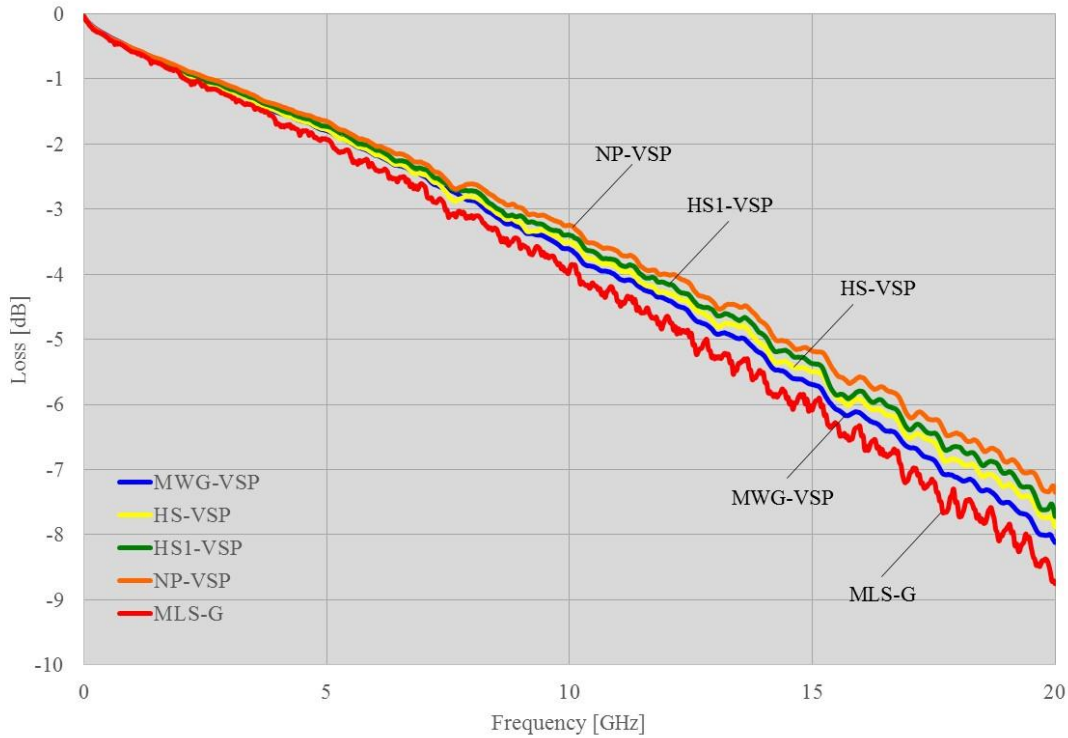


Figure 17: Comparison of measured signal losses due to difference of copper foil

Figure 18 shows the relationship between surface roughness R_z of each copper foil and the signal loss in a frequency of 20 GHz. The referred signal loss was the data for the stripline structure with the length of 200 mm in dielectric G1.

Vertical axis on the left shows the roughness R_z of copper foil, the right vertical axis shows the signal loss. The horizontal axis indicates the type of copper foil. It can be proven that the signal loss became lower with the smaller surface roughness. When the foil RTF with the largest roughness was compared with the foil NP-VSP with the lowest roughness, the signal loss of the foil NP-VSP was reduced by approximately 17% of the signal loss of foil RTF. This corresponded to about 77% reduction of conductor loss, compared with the analysis result. This shows that the usage of copper foil with low surface roughness is effective to reduce the scattering loss of the conductor. The signal loss can be improved by adopting low roughness copper foil and low dielectric constant material.

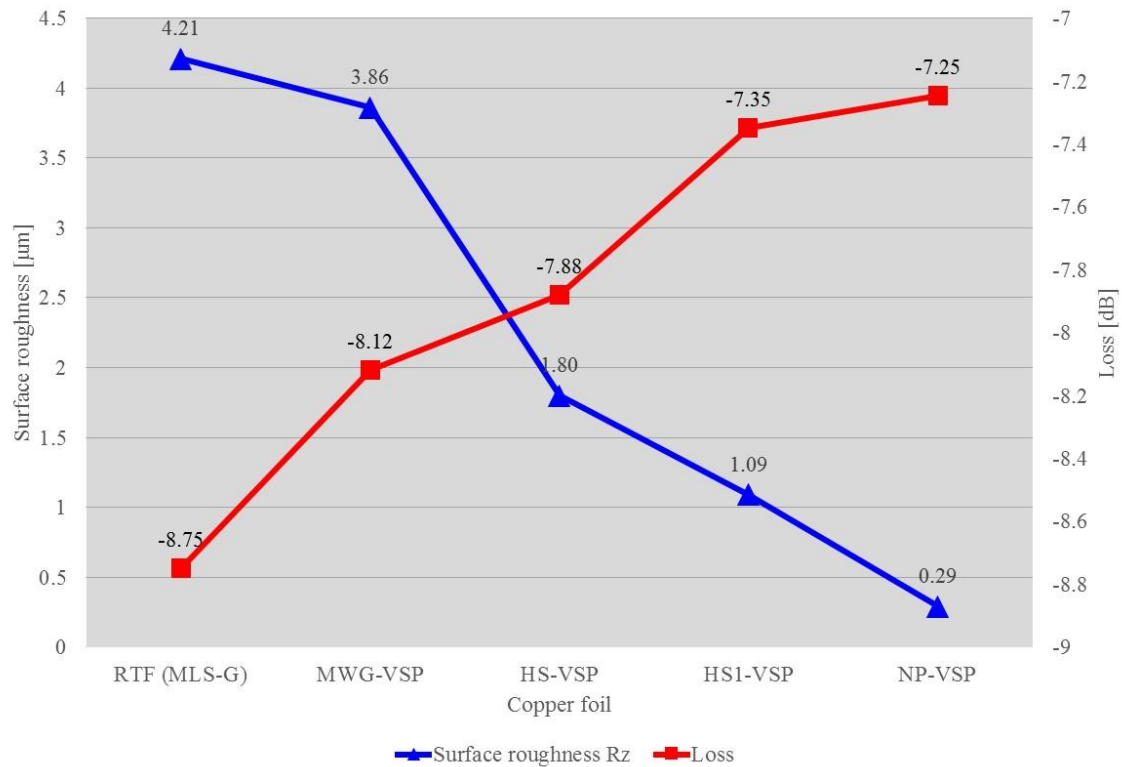


Figure 18 : Relationship between surface roughness of each copper foils and the signal loss at a frequency of 20 GHz

Summary

In this research, S parameters of various types of transmission lines structures on an evaluation board were measured and analyzed in detail.

- It was confirmed that reduction of signal loss for differential transmission line was greater than that for single-ended transmission line. From this, it was shown that differential transmission line is useful for the reduction of losses in high-speed signal transmission.
- Signal loss has been greatly reduced by adopting low dielectric constant material. It has been confirmed that the signal loss of dielectric G1 was reduced by about 68% compared with the signal loss of FR-4.
- When using the low dielectric constant materials instead of FR-4, the ratio of the conductor loss against the entire loss increases. The ratio of conductor loss for FR-4 was 13% of the total signal loss, but the conductor loss in dielectric G1 will increase to 30% among the overall loss.
- If low dielectric material is used as dielectric, low roughness copper foil is effective in reducing the overall loss. Low roughness copper foil was found to reduce by 73% of the scattering loss compared with commonly used surface roughness of copper foil.
- The chemical treatment on very low profile and the thin resin coating on no nodule copper foil are both very effective to improve bond strength of laminates.

References

- [1] S. Hinaga, M. Y. Koledintseva, P. K. R. Anmula, J. L. Drewniak, "Effect of Conductor Surface Roughness upon Measured Loss and Extracted Values of PCB Laminate Material Dissipation Factor," Proc. of IPC 2009.
- [2] E. Bokatin, "Transmission technology of high-speed digital signal Signal Integrity Introduction" Pearson Education, Inc. Chapter 9, pp.296-354, 2010.
- [3] T. Suzuki, M. Ogihara, Y. Takada, T. Matsumoto, N. Senoku, "Study of transmission loss factors and influence of surface roughness" MES2002 (12th Microelectronics Symposium), pp.443-446, October 2002.
- [4] S. H. Hall & H. L. Heck, "Advanced Signal Integrity for High-speed digital circuit design" John Wiley & Sons, Inc. Chapter 5 pp.189 -234, 2009.
- [5] M. Y. Koledintseva, A. G. Razmadze, A. Y. Gafarov, Soumya De, J. L. Drewniak, and S. Hinaga, "PCB Conductor Surface Roughness as a Layer with Effective Material Parameters," Proc. of IEEE EMC Symposium, pp.138-143, 2012.