



SIKORSKY
S-76D™ OFFSHORE OIL HELICOPTER







MEETING THE CHALLENGE TIME AFTER TIME

Working in the world's oil fields is always a challenge. Vast amounts of human, financial and technological capital are committed, all to meet an insatiable worldwide demand for petroleum products.

Among the greatest challenges of oil field production is working the offshore platforms that dot the oceans, gulfs and estuaries of the world. Transporting workers and equipment over miles of open water can be time consuming and fraught with challenges. It is frequently far from a routine undertaking.

Sikorsky S-76® series helicopters have mastered the utility transportation mission in unprecedented fashion, providing safe, reliable operations that are fully compliant with the rigid demands of the industry.

Sikorsky built on the legacy of the S-76 family of aircraft, which is well proven and a product of years of continuous improvement. In designing the S-76D™ we were seeking a balance of excellent performance, improved safety, high reliability, efficiency and the ability to operate in noise sensitive areas. We achieved all of these. Some of our competitors are larger than the S-76D and you pay for that in operating cost and greater fuel consumption.

We have the right balance with the S-76D – a very cost efficient, good performing and safe aircraft.

S-76®, S-76C+, S-76C++, S-76D™, and Quiet Zone™ are trademarks or registered trademarks of Sikorsky Aircraft Corporation. All rights reserved.

EXPERIENCE AND RELIABILITY

Offshore Oil Transport

The S-76D is the product of over 30 years of continuous improvement. It is a modern, reliable, safe, 21st century helicopter based on the workhorse S-76 series favored by utility operators.

With over 800 S-76 series helicopters delivered and over 6.8 million successful flight hours, registering a highly reliable launch availability rating – the aircraft series has earned high praise from operators worldwide.

Designed for the offshore oil mission, where reliability in severe conditions is a must, the S-76 has been continuously improved based on real operating experience. What's more, the fleet is supported around the clock by Sikorsky Aircraft Corporation. To further improve fleet performance, HUMS is now baseline for all S-76D aircraft. This system connects with Sikorsky's Customer Care Center for monitoring and diagnosis reducing unscheduled maintenance events. It also integrates into operators' Helicopter Flight Data Monitoring systems. Sikorsky backed – around the world support.





SAFE, POWERFUL, RELIABLE

Superior Performance

The S-76D helicopter is a powerful, safe, high performance aircraft developed to exceed customer expectations for modern rotorcraft transportation.

Two Pratt & Whitney Canada PW210S twin turbine engines optimized for the S-76D airframe, boost performance, ensure reliability and enable ease of maintenance when needed.

Also contributing to the superior performance is the PW210S's low fuel consumption. The engines incorporate dual channel Full Authority Digital Electronic Controls (FADEC) with the latest diagnostic capability. The all-composite blades meet the latest FAR/EASA 29 requirements for flaw tolerant design. Integrated tip caps are included to reduce maintenance requirements.

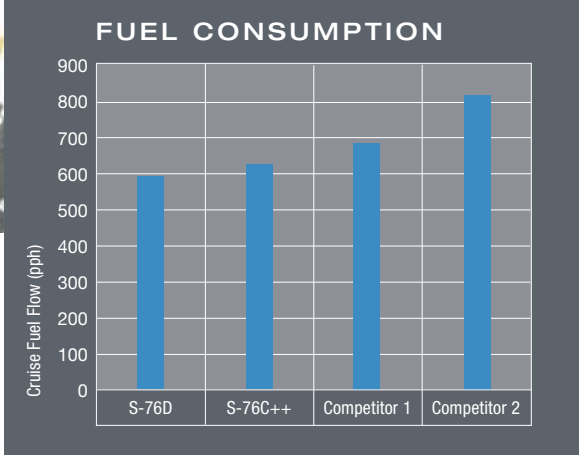
All of these qualify the S-76D helicopter for Category A, hot-day takeoff performance and gives the aircraft an FAA mission range of up to 350 nautical miles. The result is a helicopter with the best-in-class fuel burn.

The newly designed tail rotor blades substantially reduce helicopter noise while retaining the S-76 helicopter's excellent control and handling characteristics in cross winds up to 35 knots.

The aircraft's main rotor hub is a derivative of the hub on UH-60 BLACK HAWK helicopters, a system that has flown successfully for millions of hours in every imaginable flight environment.

The S-76D brings it all together, a clean airframe, low drag rotor system and efficient, 21st century technology engines. A best-in-class rating for low fuel consumption.





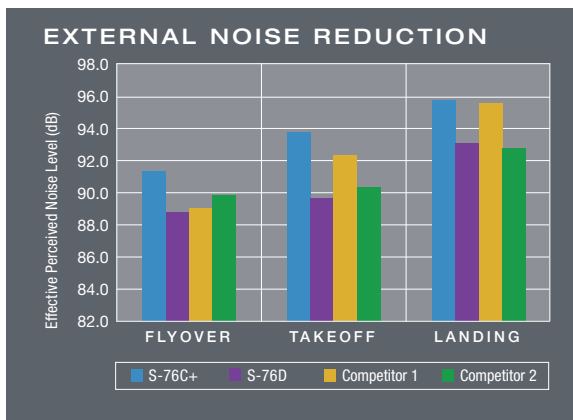
S-76D – THE “GREEN” CHOICE

BEING A GOOD NEIGHBOR

More Quiet Inside and Out

The large, comfortable and quiet cabin can be configured for up to 12 passengers with the convenience of hinged doors on both sides for easier entry and exit.

Sikorsky's exclusive active vibration control and Quiet Zone™ transmission technology assure that flights are extraordinarily smooth and quiet in the cabin with acoustic enhancements that allow normal conversations.





MODERN COCKPIT TECHNOLOGY

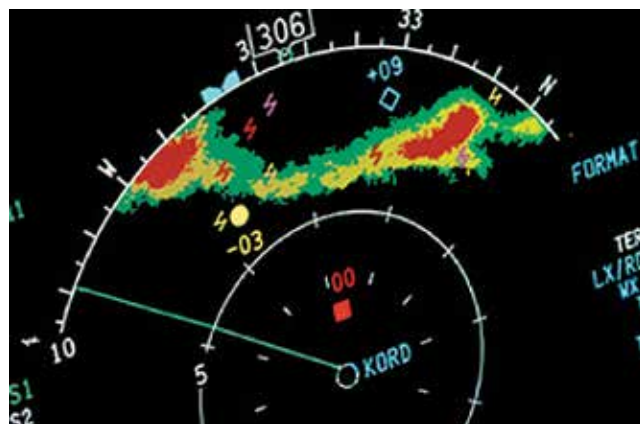
Advanced Technology Ready When You Are

The S-76D helicopter features state-of-the-art cockpit technology from Thales that is equal in sophistication with your corporate jet and today's modern airliners. In fact, the S-76D helicopter is the only aircraft to offer the Thales TopDeck® avionics suite specifically designed for helicopters.

Easy to read, large-format liquid crystal displays have been consolidated in an efficiently designed console for improved visibility and field of view. Other features such as innovative trackballs for cursor control on the display units, customer defined custom checklist uploads and built in emergency procedures promote ease of use. A digital map with optional integrated Jeppesen approach plates is also available. The avionics suite enables additional situational awareness for the pilots, reducing workload and enhancing safety.

Proven in other aircraft installations, the sophisticated Thales TopDeck avionics package includes a four-axis, fully coupled autopilot to reduce workload and provide additional margins of safety. This technology allows for single or dual pilot Instrument Flight Rule (IFR) operations, a feature critical to safe operations in changing weather conditions.

The Thales solution is a mature application designed for the helicopter. It is proven, reliable and fully supported by Sikorsky.





NO RELOCATED MUST BE OPERATED IN ACCORDANCE WITH THE OPERATING LIMITS SPECIFIED IN THE FAA APPROVED AIRCRAFT PILOT MANUAL. THE SUPPLEMENTAL 2017 TSOY SECTION OF THE AIRCRAFT SUPPLEMENTAL MANUAL MUST BE CONSULTED WITH.

ENGINE INSTRUMENT CENTRAL DISPLAY (EICAS) showing engine parameters:

- ENG 1: RPM 2100, EGT 1200, OIL PRESS 100 PSI, OIL TEMP 150°C, VIB 0.15, FUEL FLOW 1000 LBS/H
- ENG 2: RPM 2100, EGT 1200, OIL PRESS 100 PSI, OIL TEMP 150°C, VIB 0.15, FUEL FLOW 1000 LBS/H

ELECTROONICS STATUS:

- GEN 1: ON, 115V, 400Hz
- GEN 2: ON, 115V, 400Hz
- APU: ON, 115V, 400Hz
- STBY: ON, 115V, 400Hz

Primary Flight Display (PFD) showing:

- Altitude: 10,000 FT
- Heading: 090°
- Speed: 250 KIAS
- Vertical Speed: 1000 FT/MIN
- Roll: 0°
- Yaw: 0°
- Engine RPM: 2100
- Engine EGT: 1200

*Actual avionics displays shown in non-flight conditions.

SAFETY YOU EXPECT FROM SIKORSKY

Safe, Reliable Flight in All Weather Situations

After more than 35 years of continuous improvement and over 6.8 million hours in flight, the S-76 helicopter has an outstanding and enviable record for safety and reliability. The S-76D model builds on that legacy with leading edge safety features, including redundant systems for flight controls, avionics, cockpit displays and a Health Usage Monitoring System (HUMS) that captures and records operational data. This data enables technicians to proactively monitor maintenance trends.

In addition to HUMS, the S-76D aircraft's flight data can be integrated with a Helicopter Flight Data Management System (HFDM) that presents aircraft data in the flight tracking profile for training and flight operations quality assurance.

An Enhanced Ground Proximity Warning System (EGPWS), optimized for helicopter operations, and optional Traffic Collision Avoidance System (TCAS) are available on the S-76D helicopter. A combined Flight Data Recorder (FDR) and Cockpit Voice Recorder (CVR) are standard with a second CVR available as an option.

The S-76D helicopter is designed and equipped for safe, reliable flight in all weather situations and the aircraft is protected against lightning strikes and sensitive avionics are shielded to protect against electromagnetic interference (HIRF).

Additionally, passengers and crew survivability equipment includes an integrated and certified Emergency Flotation System (EFS), Automatic Flotation Deployment System (AFDS), single action cabin door releases, large pop-out cabin windows and an Emergency Locator Transmitter (ELT).

These safety features and high reliability components are designed into the S-76D helicopter, significantly increasing aircraft safety.



SAFETY COMES FIRST

The S-76D is the result of years of continuous improvement based on real operational experience. We bring 21st century technology and improvements to a proven airframe that is supported by our broad experience with other Sikorsky products such as the UH-60 BLACK HAWK and the S-92. The S-76's outstanding safety record is further augmented with the excellence of Flight Safety International training and the talent and dedication of our customers.



CUTTING EDGE FEATURES INCLUDE

- 1 Honeywell EGPWS
- 2 Thales TopDeck® avionics solution
- 3 Rotor Ice Protection System (Optional)
- 4 Ice diverting engine inlets
- 5 PW210S engines
- 6 Dual Channel FADEC with diagnostics
- 7 Goodrich Vigor™ HUMS
- 8 Cockpit voice recorder / flight data recorder

EXCEPTIONAL SERVICE

At Sikorsky, our mission is to provide the best aircraft service in the industry.

We have over 90 years of experience supporting rotorcraft deployed globally in some of the most remote locations on earth. From battlefields to offshore oil platforms, Sikorsky has proven itself year over year to be a reliable and committed source for all services needed to keep your aircraft flying and safe.

Wherever your mission takes you, Sikorsky will be there with you.

We pride ourselves on gaining a deep understanding of your operations, aircraft, and missions so we can provide proactive service and solutions to maximize your aircraft availability.

Our support begins even before you purchase your Sikorsky aircraft. We engage with your team, understand your business needs and help you choose the appropriate aircraft and provisioning based on your mission. Our comprehensive service offering include:

Pre-Operation Services

TO ENSURE YOU HAVE WHAT YOU NEED

Facility Planning Services

- Infrastructure
- Spares Planning
- Tooling and GSE

Pilot/Maintenance Training

Aircraft Delivery

In-Operation Services

TO ENSURE CONTINUED AIRCRAFT AVAILABILITY AND SAFETY

Flight Hour based Warranty Programs

(Total Assurance Program and Powertrain Assurance Program)

AOG Resolution

On Site Support

Spares/Depot Management

Overhaul & Repair

Aircraft Modification/Upgrade Services

Publications

Product Alerts and Bulletins

Engineering Services

Pilot/Maintenance Training



Help is Just a Call Away 1-800-WINGED-S

Our new state-of-the-art Customer Care Center is the heart of our customer support.

Open around the clock, fully staffed with technical and logistics experts, the center is ready to receive your call for assistance. All customer needs are logged, assigned and rapidly solved. Solutions are communicated as fast as possible and cases remain open until the customer confirms resolution. This center is staffed with the sole purpose of solving your needs to keep your aircraft available and flying.

The Customer Care Center is also home to our fleet analytics team that provides pro-active fleet management services. Using the daily fleet HUMS data and proprietary advanced analytics, Sikorsky measures aircraft component wear very precisely. Predicting when a spare will be needed before its needed allows us to pre-position spares at forward stocking locations near the point of usage keeping your aircraft in the air.

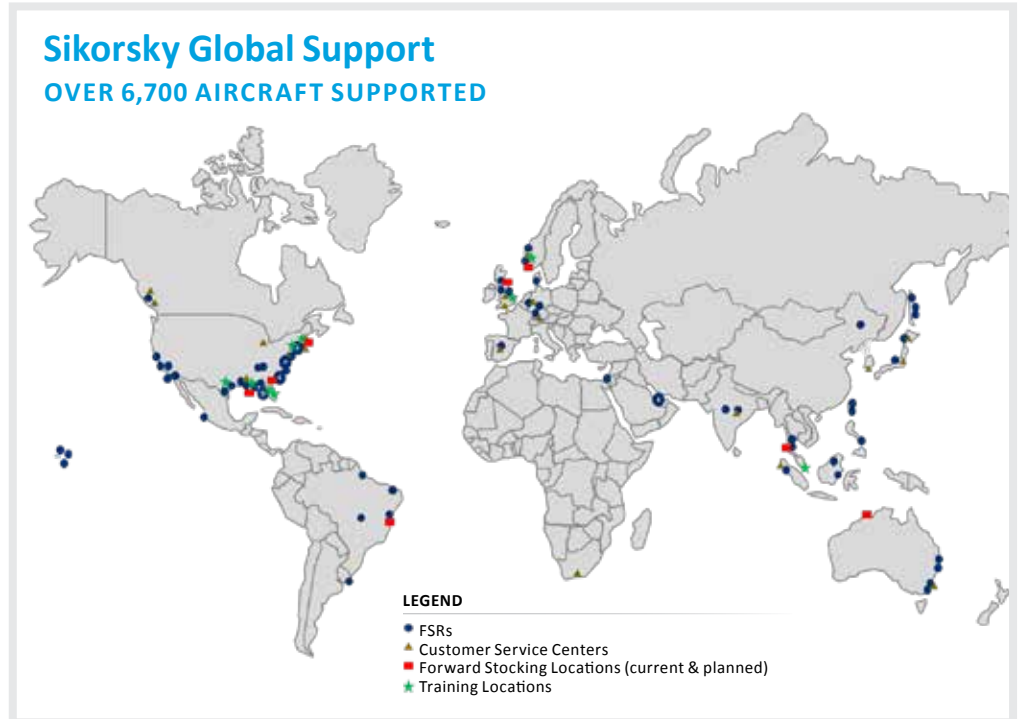


State-of-the-Art Customer Care Center is open 24/7/365 to support your aircraft from Fleet Management to AOG Resolution

Our Expanding Global Support Network provides improved access to services and rapid response to urgent customer needs



Providing global support regionally through Sikorsky-authorized service centers



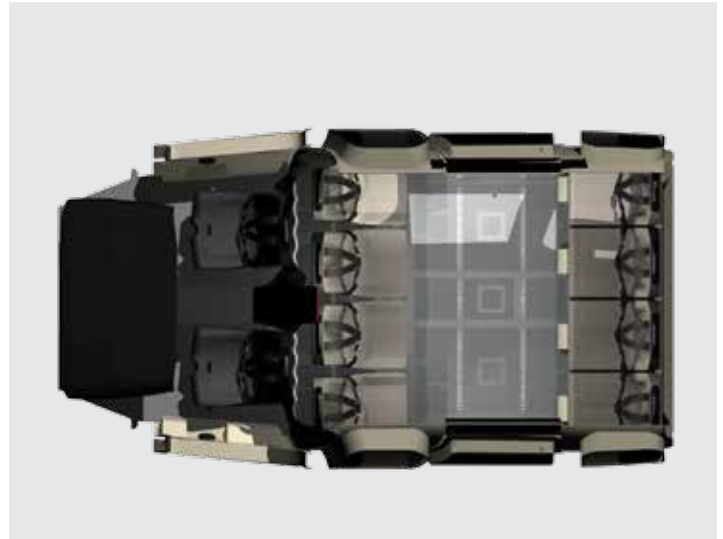
S-76D OIL CABIN OPTIONS

Utility Cabin Configurations

The new S-76D helicopter has been improved to meet the needs of today's operators and the rigors of the demanding utility mission. The aircraft incorporates technological advances that deliver improved safety, reliable performance and comfort, all packaged in an attractive new design. The Active Vibration Control (AVC) system and Quiet Zone gearbox technology combine to provide a comfortable transit for passengers in the large rectangular cabin.



8 Place with forward cabin, aft view



8 Place cabin, top view



10 Place with aft cabin, aft view



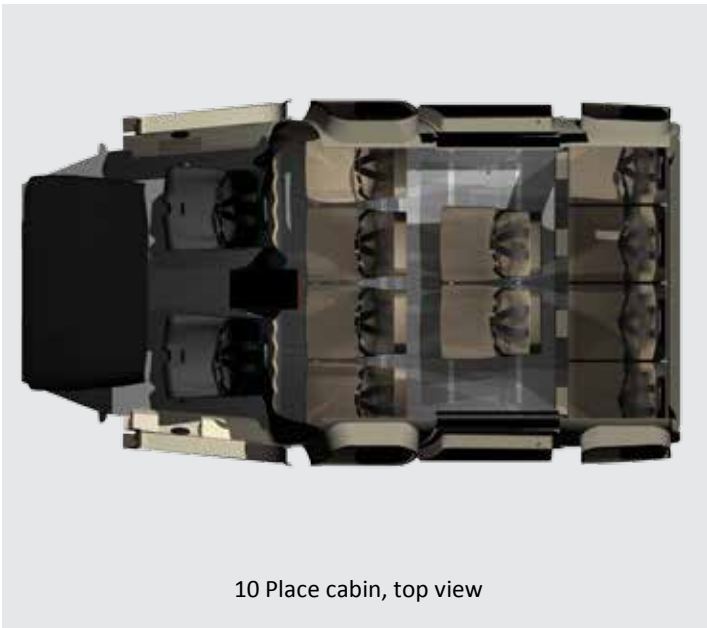
10 Place with aft cabin, aft view



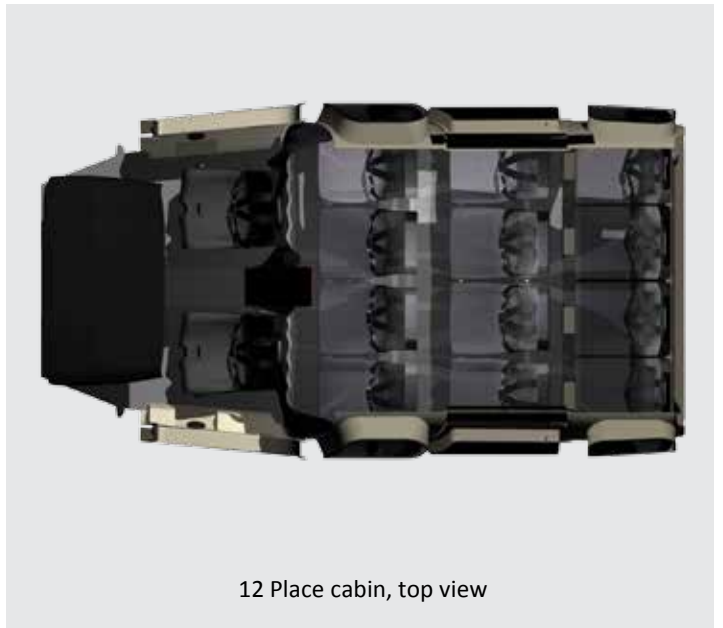
12 Place cabin, aft view



12 Place cabin, forward view



10 Place cabin, top view



12 Place cabin, top view

S-76D OIL CONFIGURATION AND OPTIONS

Basic Configuration

The new S-76D helicopter builds on the proven success of over 800 S-76 series aircraft delivered. Propulsion is supplied by two Pratt & Whitney Canada PW210S engines with dual FADEC and expanded diagnostics.

The redesigned instrument panel features the integrated Thales TopDeck® avionics system with four large format flat panel displays. The open architecture panels can display attitude indicator, navigation, digital map, flight plan management, systems data monitoring, warning advisory system and other performance management elements. The Collins Pro Line 21 dual nav/comm and Goodrich Vigor™ HUMS complete the suite. Cockpit data is provided by a solid state air data system featuring dual AHRS and dual air data computers. The S-76D aircraft can be certified for single pilot IFR and, to ensure safety, all S-76D helicopters are equipped with EGPWS, combined cockpit voice recorder / flight data recorder, and 406 MHz ELT. TCAS1 is also available as an option.

The four, flaw tolerant main rotor blades feature an all-composite spar, wider chord, enhanced air-foil and integrated tip caps. Quiet Aircraft Technology Designation standards are achieved through a new tail rotor blade design .

The large, rectangular cabin and 38-cubic foot baggage compartment can be custom configured for many mission applications. Speed, long range and a smooth level ride are ensured by the fully articulated rotor system and Active Vibration Control system. The elegantly clean airframe, retractable landing gear and 284 gallons of usable fuel complete the basic configuration.

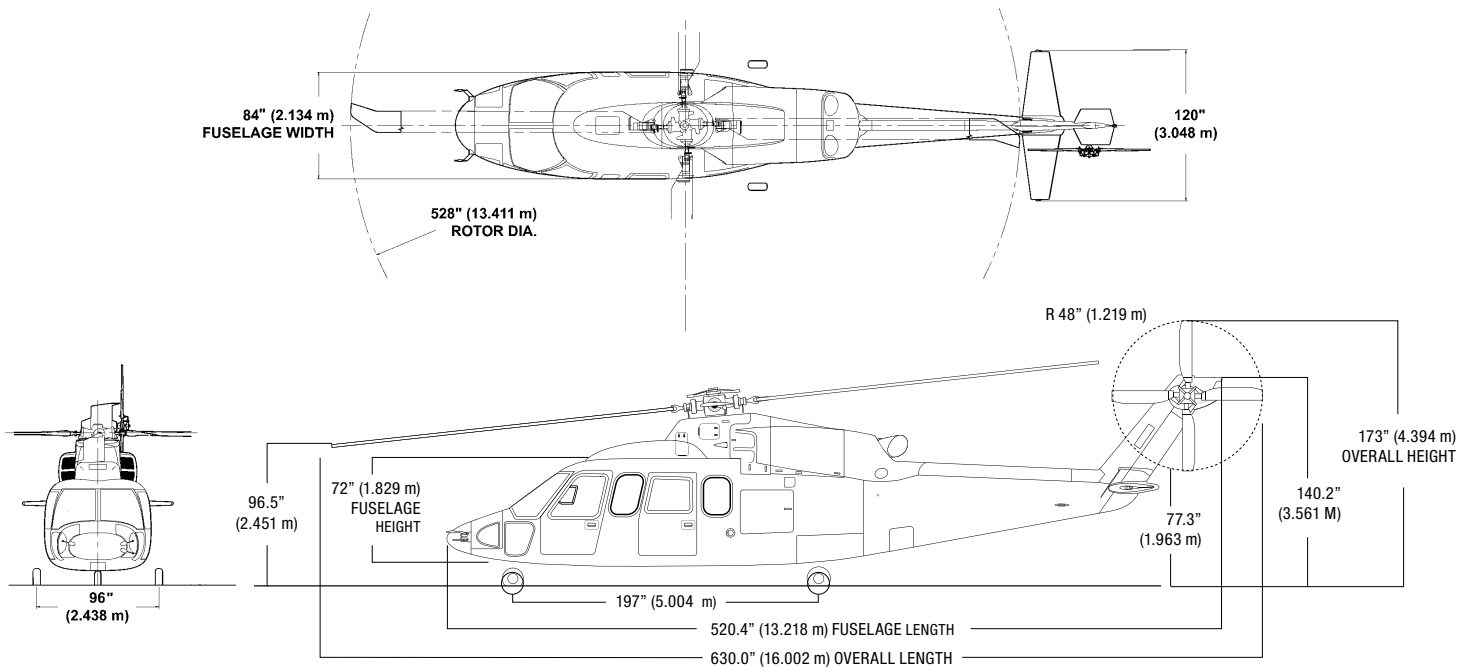
S-76D OIL EQUIPMENT	STANDARD	OPTIONAL
Utility interior	●	
Twelve-passenger energy attenuating seating	●	
Cabin ICS	●	
Enlarged, 19" x 26" push-out cabin windows	●	
Dual GPS WAAS/LPV with Mode S and ADS-B out	●	
Lighted approach plate holders (both pilots)	●	
Weather avoidance radar – Primus 660	●	
Flight following and voice communications system – Sky Connect MMU-II	●	
Emergency Flotation System with auto deployment	●	
Automatically deployable ELT (ADELT)	●	
HUMS	●	
TCAS1	●	
HEELS	●	
Dart Aerospace Life Raft Deployment System	●	
High intensity strobe lights (HISL) – upper and lower	●	
Cargo hook – 3,300 lb capacity		▲
Air conditioning system		▲

This is not a comprehensive list of options; please consult with your sales specialist to develop a configuration and interior plan to meet your mission needs.

S-76D OIL SPECIFICATIONS

Standard Day Sea Level at 26,500 lb/12,020 kg gross weight, unless otherwise stated

Maximum speed (Vne)	155 kts	287 km/hr
Maximum cruise speed	155 kts	287 km/hr
Long range cruise speed	152 kts	282 km/hr
Hover ceiling out-of-ground effect	4,930 ft	1,503 m
Hover ceiling in-ground effect	10,540 ft	3,213 m
One engine inoperative service ceiling	8,235 ft	2,510 m
Range – long range cruise speed @ 4,000 feet		
- with 30 minute reserve	398 nm	737 km
- no reserve	472 nm	874 km
- average speed	152 kts	282 km/hr
- average fuel flow	600 lb/hr	272 kg/hr
Minimum takeoff gross weight	11,875 lb	5,386 kg
Empty weight, base aircraft	6,963 lb	3,165 kg
Useful load, internal	4,912 lb	2,233 kg



WE'RE ENGINEERING A BETTER TOMORROW

6900 Main Street, Stratford, Connecticut 06615 USA
+1 (800) WINGED-S (946-4337)
www.lockheedmartin.com/sikorsky

