

CONFIDENTIAL
Do Not Distribute Due to
Public Safety/Security

Preliminary Plans Presentation

Silver Spring International Middle School Addition

Prepared for
Montgomery County Board of Education

October 2021



This page intentionally left blank.

Preliminary Plans Presentation

Silver Spring International Middle School Addition

313 Wayne Avenue
Silver Spring, Maryland 20910

Montgomery County Board of Education

Ms. Brenda Wolff	President
Ms. Karla Silvestre	Vice President
Dr. Judith R. Docca	Member
Mrs. Shebra L. Evans	Member
Ms. Lynne Harris	Member
Mrs. Rebecca Smondrowski	Member
Ms. Hana O’Looney	Student Member

Montgomery County Public Schools Administration

Dr. Monifa B. McKnight	Interim Superintendent of Schools
Ms. Eugenia S. Dawson	Chief of Finance and Operations
Mr. Seth P. Adams	Director, Department of Facilities Management
Mr. Gary D. Mosesman	Director, Division of Design and Construction
Ms. Adrienne L. Karamihas	Director, Division of Capital Planning and Real Estate
Ms. Shiho C. Shibasaki	School Facilities Architect, Department of Facilities Management
Mr. Seth A. Feriano	Team Leader, Division of Design and Construction
Mr. Dennis F. Cross	Facilities Manager, Division of Design and Construction
Ms. Robin O’Hara	Senior Planner, Division of Capital Planning and Real Estate

This page intentionally left blank.

Facility Advisory Process Involvement

Involvement

The preliminary plans for the Silver Spring International Middle School (SSIMS) Addition project were developed based on the educational specifications prepared by Montgomery County Public Schools (MCPS). Through a series of public work sessions, several design options were developed and evaluated. The proposed plans presented herein were reviewed and subsequently modified in accordance with recommendations and suggestions received during the schematic design work sessions.

Participants in Facility Design Process

Ms. Karen Y. Bryant	Principal	Silver Spring International Middle School
Mr. Stephen Reck	Assistant Principal	Silver Spring International Middle School
Mr. Richard Solomon	Resource Counselor	Silver Spring International Middle School
Mr. Joe Shashaty	Parent	Sligo Creek Elementary School
Mr. Glenn Canner	Parent	Silver Spring International Middle School
Mr. Scott Aronson	Parent	Silver Spring International Middle School
Ms. Kathy Attar	Parent	Sligo Creek Elementary School
Mr. Richard Bacon	PTA President	Sligo Creek Elementary School
Mr. Paul Guinnessy	Parent	Silver Spring International Middle School
Mr. Todd Cimo	Parent	Silver Spring International Middle School
Ms. Heidi Armondo	PTSA President	Silver Spring International Middle School
Mr. Milo Lamare-Bertrand	Community Member	Silver Spring International MS Community
Mr. Steven Oriol	Community Member	Silver Spring International MS Community

Project Information

Background/History

Silver Spring International Middle School (SSIMS) is located in Silver Spring, Maryland. Originally Blair High School, the first building on site was constructed in 1934. Additional buildings were added to the site in 1936, 1940, 1949, 1951, 1953, 1959, 1969, 1974, 1976, and 1985. Following an extensive interior renovation and addition project in 1999, the facility reopened as Sligo Creek Elementary School and Silver Spring International Middle School.

Location: 313 Wayne Avenue, Silver Spring, Maryland 20910

Cluster: Downcounty Consortium

History and Square Footage of Existing Building:	1999	Sligo Creek Elementary School	98,799 square feet
	1999	Silver Spring International Middle School	152,731 square feet
	2009	HVAC Modernization	0 square feet
	Total		251,530 square feet

Site Size: 16.5 Acres

Current Program Capacity: 1,107 Silver Spring International Middle School
664 Sligo Creek Elementary School

Current School Enrollment: 1,125 Silver Spring International Middle School
677 Sligo Creek Elementary School

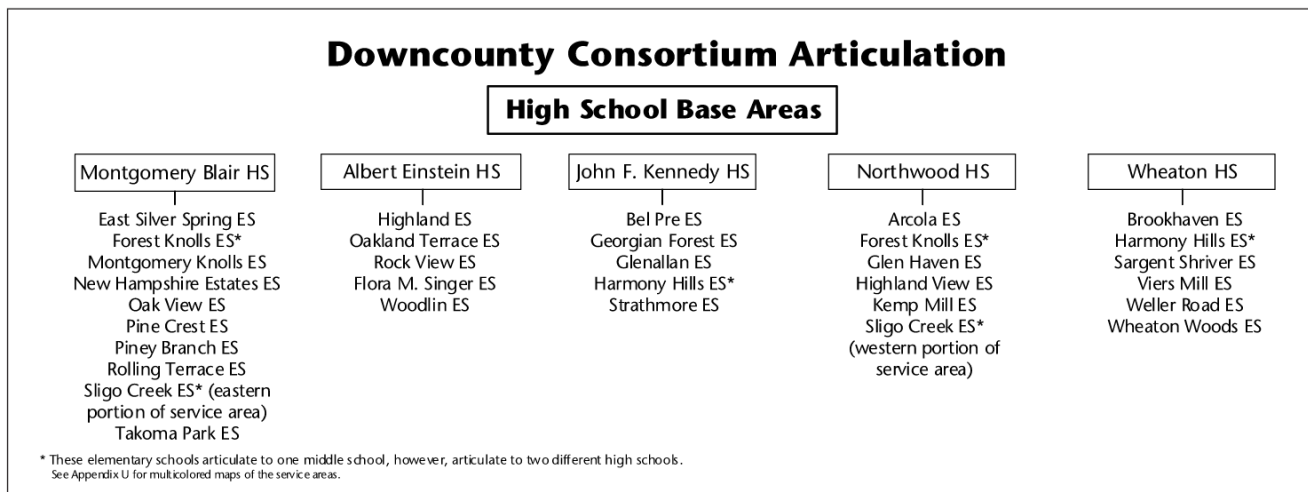
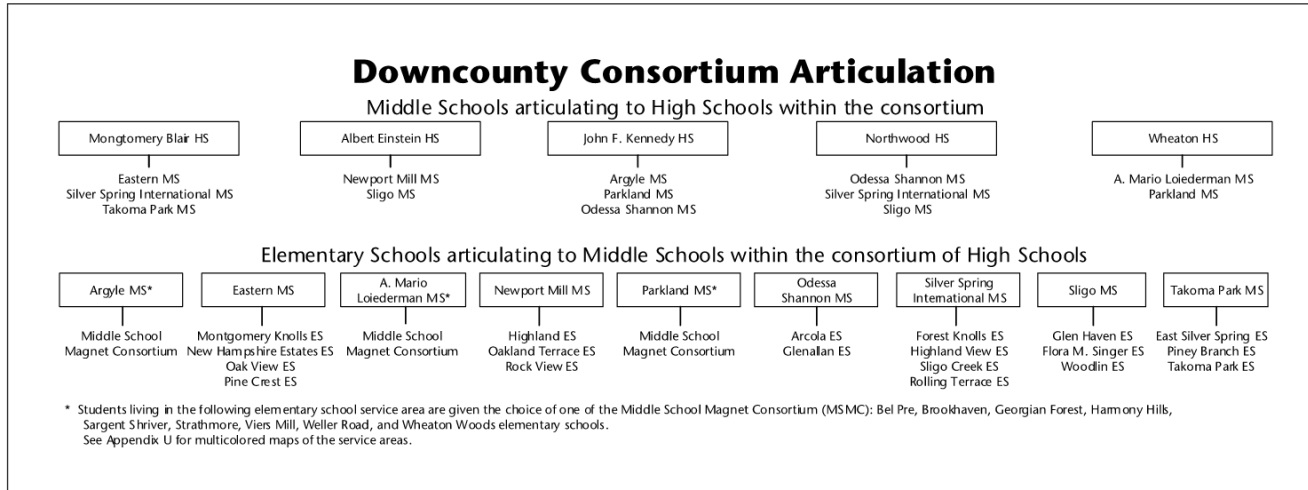
Current Parking Spaces: 203

SSIMS currently serves students from Grades 6–8. SSIMS shares a building with Sligo Creek Elementary School (SCES) which serves Grades K–5. Enrollment projections for SSIMS show an increase within its current boundaries. After the Addition is complete in fall 2024, the projected enrollment will be approximately 1139 students. The existing abandoned auditorium will be demolished and replaced with a 3-story addition. The Addition will house the physical education program, which includes new gymnasiums (main, second, and auxiliary); locker rooms, which currently are located in a remote field house; health classroom; fitness/weight room; storage rooms; laundry room; common planning area; administrative offices; a new security vestibule entrance; and science laboratories. As an Add Alternate, an abandoned space that fronts Wayne Avenue, within the existing school, will be renovated into a Linkages to Learning suite, which will include a reception area, conference room, storage closet, therapy room, and administrative offices. The project is scheduled to be completed by August 2024.

Project Information (Continued)

Educational Program Objectives

The program objectives of this Addition project include: solve accessibility, remoteness, and security issues of the existing physical education program located in the remote field house; improve security, and circulation, and repurpose abandoned space into useable program space for the school.



Project Information (Continued)

Projected Enrollment and Space Availability Effects of the FY 2022 Capital Budget and Amendments to the FY 2021–2026 Capital Improvements Program

Schools		Actual	Projections							
		20–21	21–22	22–23	23–24	24–25	25–26	26–27	2030	2035
Montgomery Blair HS	Program Capacity	2889	2889	2889	2889	2889	2889	2889	2889	2889
	Enrollment	3220	3280	3391	3518	3633	3676	3725	3735	3775
	Available Space	(331)	(391)	(502)	(629)	(744)	(787)	(836)	(846)	(886)
	Comments									
Albert Einstein HS	Program Capacity	1616	1616	1616	1616	1616	1616	1616	1616	1616
	Enrollment	1921	2011	2052	2124	2115	2139	2169	2200	2230
	Available Space	(305)	(395)	(436)	(508)	(499)	(523)	(553)	(584)	(614)
	Comments									
John F. Kennedy HS	Program Capacity	1794	1794	2221	2221	2221	2221	2221	2221	2221
	Enrollment	1788	1801	1896	1983	2029	2055	2083	2200	2225
	Available Space	6	(7)	325	238	192	166	138	21	(4)
	Comments			Addition Complete						
Northwood HS	Program Capacity	1508	1508	1508	1508	1508	2498	2498	2498	2498
	Enrollment	1708	1875	1886	1962	2002	2027	2057	2070	2100
	Available Space	(200)	(367)	(378)	(454)	(494)	471	441	428	398
	Comments	Planning for Replacement					Replacement Complete			
Wheaton HS	Program Capacity	2234	2234	2234	2234	2234	2234	2234	2234	2234
	Enrollment	2280	2304	2359	2457	2399	2427	2462	2485	2500
	Available Space	(46)	(70)	(125)	(223)	(165)	(193)	(228)	(251)	(266)
	Comments									
Charles W. Woodward HS	Program Capacity						2700	2700	2700	2700
	Enrollment						0	0	0	0
	Available Space						2700	2700	2700	2700
	Comments						Opens			
Argyle MS	Program Capacity	897	897	897	897	897	897	897	897	897
	Enrollment	1043	1019	1012	997	995	1016	1009	1030	1060
	Available Space	(146)	(122)	(115)	(100)	(98)	(119)	(112)	(133)	(163)
	Comments	Facility Planning for Addition								
Eastern MS	Program Capacity	1012	1012	1012	1012	1012	1012	1012	1012	1012
	Enrollment	966	969	986	1013	1010	1030	1023	1030	1050
	Available Space	46	43	26	(1)	2	(18)	(11)	(18)	(38)
	Comments									
A. Mario Loiederman MS	Program Capacity	1003	1003	1003	1003	1003	1003	1003	1003	1003
	Enrollment	996	987	984	993	994	1011	1003	1015	1025
	Available Space	7	16	19	10	9	(8)	0	(12)	(22)
	Comments	Performing Arts Project Complete								

Project Information (Continued)

Projected Enrollment and Space Availability

Effects of the FY 2022 Capital Budget and Amendments to the FY 2021–2026 Capital Improvements Program

Newport Mill MS		Program Capacity	850	850	850	850	850	850	850	850	
		Enrollment	670	668	667	676	674	689	683	690	700
		Available Space	180	182	183	174	176	161	167	160	167
		Comments									
Parkland MS		Program Capacity	982	982	982	1216	1216	1216	1216	1203	1203
		Enrollment	1158	1176	1121	1099	1096	1118	1111	1120	1150
		Available Space	(176)	(194)	(139)	117	120	98	105	83	53
		Comments	Planning for Addition			Addition Complete					
Odessa Shannon MS		Program Capacity	727	727	881	881	881	881	881	881	881
		Enrollment	795	818	790	752	750	766	761	770	800
		Available Space	(68)	(91)	91	129	131	115	120	111	81
		Comments			Replacement Complete						
Silver Spring International MS		Program Capacity	1107	1107	1107	1107	1197	1197	1197	1197	1197
		Enrollment	1160	1186	1177	1143	1139	1162	1155	1165	1175
		Available Space	(53)	(79)	(70)	(36)	58	35	42	32	22
		Comments					Addition Complete				
Sligo MS		Program Capacity	941	941	941	941	941	941	941	941	941
		Enrollment	738	770	745	748	746	761	755	775	800
		Available Space	203	171	196	193	195	180	186	166	141
		Comments									
Takoma Park MS		Program Capacity	1258	1322	1322	1322	1322	1322	1322	1322	1322
		Enrollment	1158	1173	1126	1119	1116	1139	1131	1200	1225
		Available Space	100	149	196	203	206	183	191	122	97
		Comments	Addition Complete Phase 1	Addition Complete Phase 2							
Arcola ES	CSR	Program Capacity	651	651	651	651	651	651	651	651	
		Enrollment	703	737	752	751	746	739	730	730	
		Available Space	(52)	(86)	(101)	(100)	(95)	(88)	(79)		
		Comments									
Bel Pre ES Grades (pre-K-2) Paired With Strathmore ES	CSR	Program Capacity	640	640	640	640	640	640	640	640	
		Enrollment	549	594	587	574	573	573	573	573	
		Available Space	91	46	53	66	67	67	67		
		Comments									
Brookhaven ES	CSR	Program Capacity	470	470	470	470	470	470	470	470	
		Enrollment	421	468	463	451	447	445	441	441	
		Available Space	49	2	7	19	23	25	29		
		Comments									

Project Information (Continued)

Projected Enrollment and Space Availability
Effects of the FY 2022 Capital Budget and Amendments to the FY 2021–2026 Capital Improvements Program

East Silver Spring ES	CSR	Program Capacity	577	577	577	577	577	577	577
		Enrollment	481	488	502	499	495	513	506
		Available Space	96	89	75	78	82	64	71
		Comments							
Forest Knolls ES	CSR	Program Capacity	529	529	529	529	529	529	529
		Enrollment	543	525	538	521	502	504	509
		Available Space	(14)	4	(9)	8	27	25	20
		Comments							
Georgian Forest ES	CSR	Program Capacity	670	670	670	670	670	670	670
		Enrollment	568	606	607	613	655	646	637
		Available Space	102	64	63	57	15	24	33
		Comments							
Glen Haven ES	CSR	Program Capacity	580	580	580	580	580	580	580
		Enrollment	480	510	525	527	535	536	531
		Available Space	100	70	55	53	45	44	49
		Comments							
Glenallan ES	CSR	Program Capacity	747	747	747	747	747	747	747
		Enrollment	707	723	725	730	710	720	728
		Available Space	40	24	22	17	37	27	19
		Comments							
Harmony Hills ES	CSR	Program Capacity	709	709	709	709	709	709	709
		Enrollment	690	722	722	728	698	705	702
		Available Space	19	(13)	(13)	(19)	11	4	7
		Comments							
Highland ES	CSR	Program Capacity	540	540	540	540	540	540	540
		Enrollment	530	557	545	531	523	519	511
		Available Space	10	(17)	(5)	9	17	21	29
		Comments							
Highland View ES	CSR	Program Capacity	288	288	288	288	288	450	450
		Enrollment	382	414	416	407	401	405	400
		Available Space	(94)	(126)	(128)	(119)	(113)	45	50
		Comments						Addition Complete	
Kemp Mill ES	CSR	Program Capacity	458	458	458	458	458	458	458
		Enrollment	458	458	429	430	416	408	404
		Available Space	0	0	29	28	42	50	54
		Comments							

Project Information (Continued)

Projected Enrollment and Space Availability Effects of the FY 2022 Capital Budget and Amendments to the FY 2021–2026 Capital Improvements Program

Montgomery Knolls ES Grades (K–2) Paired With Pine Crest ES	CSR	Program Capacity	681	681	681	681	681	681	681
		Enrollment	490	487	482	490	489	489	489
		Available Space	191	194	199	191	192	192	192
		Comments	Addition Complete						
New Hampshire Estates ES Grades (pre-K–2) Paired With Oak View ES	CSR	Program Capacity	493	493	493	493	493	493	493
		Enrollment	448	486	469	449	447	448	449
		Available Space	45	7	24	44	46	45	44
		Comments							
Oak View ES Grades (3–5) Paired With New Hampshire ES	CSR	Program Capacity	335	335	335	335	335	335	335
		Enrollment	419	420	442	460	453	431	412
		Available Space	(84)	(85)	(107)	(125)	(118)	(96)	(77)
		Comments							
Oakland Terrace ES	CSR	Program Capacity	487	487	487	487	487	487	487
		Enrollment	512	539	555	558	551	545	539
		Available Space	(25)	(52)	(68)	(71)	(64)	(58)	(52)
		Comments							
Pine Crest ES Grades (3–5) Paired With Montgomery Knolls ES	CSR	Program Capacity	634	634	634	634	634	634	634
		Enrollment	446	475	482	469	462	459	467
		Available Space	188	159	152	165	172	175	167
		Comments	Addition Complete						
Piney Branch ES Grades (3–5) Paired With Takoma Park ES	CSR	Program Capacity	611	611	611	611	611	611	611
		Enrollment	626	631	625	622	610	630	634
		Available Space	(15)	(20)	(14)	(11)	1	(19)	(23)
		Comments							
Rock View ES	CSR	Program Capacity	662	662	662	662	662	662	662
		Enrollment	625	656	642	638	637	630	618
		Available Space	37	6	20	24	25	32	44
		Comments							
Rolling Terrace ES	CSR	Program Capacity	729	729	729	729	729	729	729
		Enrollment	727	760	767	772	762	760	753
		Available Space	2	(31)	(38)	(43)	(33)	(31)	(24)
		Comments							
Sargent Shriver ES	CSR	Program Capacity	660	660	660	660	660	660	660
		Enrollment	736	740	730	739	741	763	778
		Available Space	(76)	(80)	(70)	(79)	(81)	(103)	(118)
		Comments							

Project Information (Continued)

Projected Enrollment and Space Availability
Effects of the FY 2022 Capital Budget and Amendments to the FY 2021–2026 Capital Improvements Program

Flora M. Singer ES	CSR	Program Capacity	641	641	641	641	641	641	641		
		Enrollment	613	630	640	628	634	634	620		
		Available Space	28	11	1	13	7	7	21		
		Comments									
Sligo Creek ES		Program Capacity	664	664	664	664	664	664	664		
		Enrollment	658	644	637	617	613	635	630		
		Available Space	6	20	27	47	51	29	34		
		Comments									
Strathmore ES Grades (3–5) Paired With Bel Pre ES	CSR	Program Capacity	439	439	439	439	439	439	439		
		Enrollment	491	474	494	502	502	489	477		
		Available Space	(52)	(35)	(55)	(63)	(63)	(50)	(38)		
		Comments									
Takoma Park ES Grades (pre-K–2) Paired With Piney Branch ES	CSR	Program Capacity	629	629	629	629	629	629	629		
		Enrollment	617	597	618	622	619	620	620		
		Available Space	12	32	11	7	10	9	9		
		Comments									
Viers Mill ES	CSR	Program Capacity	743	743	743	743	743	743	743		
		Enrollment	503	531	530	521	521	528	530		
		Available Space	240	212	213	222	222	215	213		
		Comments									
Weller Road ES	CSR	Program Capacity	772	772	772	772	772	772	772		
		Enrollment	677	748	776	773	786	784	777		
		Available Space	95	24	(4)	(1)	(14)	(12)	(5)		
		Comments									
Wheaton Woods ES	CSR	Program Capacity	749	749	749	749	749	749	749		
		Enrollment	494	504	485	484	475	470	471		
		Available Space	255	245	264	265	274	279	278		
		Comments									
Woodlin ES		Program Capacity	463	463	463	653	653	653	653		
		Enrollment	511	537	513	502	501	499	497		
		Available Space	(48)	(74)	(50)	151	152	154	156		
		Comments				Maj. Cap. Project Complete					
Cluster Information		HS Utilization	109%	112%	111%	115%	116%	87%	88%	90%	91%
		HS Enrollment	10917	11271	11584	12044	12178	12324	12496	12690	12496
		MS Utilization	99%	99%	96%	93%	91%	93%	93%	95%	97%
		MS Enrollment	8684	8766	8608	8540	8520	8692	8631	8795	8985
		ES Utilization	93%	97%	97%	95%	95%	94%	93%	97%	93%
ES Enrollment	16105	16661	16698	16608	16504	16527	16433	17090	16920		

Project Information (Continued)

Demographic Characteristics of Schools

Schools	2020–2021						2020–2021		2019–2020
	Total Enrollment	Two or more races %	Black or Afr. Amer. %	Asian%	Hispanic %	White %	FARMS%*	ESOL%**	Mobility Rate%***
Montgomery Blair HS	3220	4.3%	24.0%	12.9%	34.3%	24.2%	38.9%	18.5%	10.1%
Albert Einstein HS	1921	4.3%	17.5%	6.1%	47.7%	24.0%	43.1%	19.2%	10.4%
John F. Kennedy HS	1788	1.2%	23.3%	6.5%	63.6%	5.2%	59.9%	30.4%	14.3%
Northwood HS	1708	3.3%	25.6%	5.0%	52.6%	13.3%	53.7%	21.4%	20.1%
Wheaton HS	2280	2.5%	20.2%	11.8%	55.9%	9.5%	54.0%	21.1%	11.3%
Argyle MS	1043	3.5%	23.9%	7.5%	57.4%	7.6%	66.0%	30.9%	11.0%
Eastern MS	966	3.7%	19.2%	7.1%	49.5%	20.4%	57.6%	30.1%	12.0%
Odessa Shannon MS	795	1.8%	25.3%	5.5%	61.9%	5.2%	69.7%	36.4%	14.4%
A. Mario Loiederman MS	996	3.0%	15.1%	4.2%	62.4%	15.0%	63.4%	31.9%	12.6%
Newport Mill MS	670	4.2%	13.3%	7.9%	59.9%	14.2%	60.3%	32.8%	11.1%
Parkland MS	1158	2.4%	23.5%	13.0%	52.2%	8.6%	58.6%	27.4%	6.0%
Silver Spring International MS	1160	4.1%	22.4%	4.4%	43.1%	25.8%	44.5%	24.1%	11.2%
Sligo MS	738	3.8%	21.0%	6.9%	42.0%	26.0%	46.6%	24.3%	11.8%
Takoma Park MS	1158	5.8%	34.0%	13.9%	16.3%	29.8%	28.8%	12.8%	6.9%
Elementary Cluster Total	16105	4.4%	21.2%	5.3%	51.5%	17.3%	58.1%	41.0%	13.4%
Elementary County Total	72298	5.5%	21.8%	14.0%	34.1%	24.2%	40.3%	29.1%	11.9%

*Percent of students approved for Free and Reduced-priced Meals Program (FARMS) during the 2020–2021 school year.

**Percent of English for Speakers of Other Languages (ESOL) during the 2020–2021 school year. High School students are served in regional ESOL centers.

***Mobility Rate is the number of entries plus withdrawals during the 2019–2020 school year compared to total enrollment.

Notes: Native Hawaiian/Pacific Islander and American Indian/Alaskan Native categories total less than 1% and were therefore excluded from the table.

Due to federal and state guidelines, demographic characteristics of schools of less than or equal to 5 students per category are reported as 0%.

Project Information (Continued)

Program Capacity Table
(School Year 2020–2021)

Schools	Grades Served	Capacity (HS @90% MS@85%)	Total Rooms	Support Rooms	Regular Secondary @25	Regular Elementary @23	CSR Grades 1–2 @18	Pre-K @20	Pre-K @40	HS @20	CSR KIND @18	KIND @22	ESOL @15	METS @15	Special Education Services																									
															School Based	Cluster Based	Quad Cluster Based				County & Regional Based																			
															HSM @13	ELEM LAD @13	ELC @10	LANG @12	LFI @10	SCB @6	AAC@7	AUT @6	BRIDGE @10	DHOH @7	SESES @10	EXTENSIONS @6	GT/LD @13	PD @7	PEP@6	PEP @12	PEP @18	VISION (Elementary) @7	OTHER							
Montgomery Blair HS	9-12	2889	132	123									7	2																										
Albert Einstein HS	9-12	1616	80	66																																				
John F. Kennedy HS	9-12	1794	86	75																																				
Northwood HS	9-12	1508	73	60																																				
Wheaton HS	9-12	2234	104	95																																				
Argyle MS	6-8	897	43	41																																				
Eastern MS	6-8	1012	51	44																																				
A. Mario Loiederman MS	6-8	1003	48	46																																				
Newport Mill MS	6-8	850	41	39																																				
Parkland MS	6-8	982	47	45																																				
Odessa Shannon MS	6-8	727	37	32																																				
Silver Spring International MS	6-8	1107	54	51																																				
Sligo MS	6-8	941	51	42																																				
Takoma Park MS	6-8	1258	60	58																																				

Project Information (Continued)

Project Design Objectives

The Addition will be designed in accordance with current educational specifications. The project will provide a cost effective, energy-efficient, and safe facility to meet the needs of the school.

The building design goals include the following:

- Create a new identifiable and secure entrance
- Provide a new 3-story wing for the physical education program, health classrooms, and science laboratories
- Maintain a separation between the elementary school and the middle school
- Incorporate sustainable design principles
- Provide natural daylight into all new teaching spaces
- Provide an addition that is integrated into the circulation patterns of the existing school
- Create a unified architectural aesthetic with the historic components of the building

The site design goals include the following:

- Incorporate sustainable design principles
- Meet stormwater management regulations
- Provide accessible routes to the main entrance of SSIMS and the Linkages to Learning suite

Interior renovations to the existing school also are part of this project. The objective of the proposed interior renovations is to create a space for the Linkages to Learning program in a previously abandoned portion of the school. The Linkages to Learning suite will include a reception area, conference room, offices, staff toilet, and storage closet. This area will have its own exterior entry separate from the middle school.

Project Information (Continued)

Space Summary

The proposed Addition will increase the program capacity of Silver Spring International Middle School to approximately 1175 students with a core capacity of 1200. The Addition will include:

Silver Spring International Middle School			
Square Foot Summary			
When this project is complete, the following spaces are to be provided: The capacity will be 1175 with a core of 1200. Updated February 24, 2021			
Facility	#	Net Sq. Ft.	Total Net Sq. Ft.
Physical Education			
Gymnasium (=2 TS)	1	6,800	6,800
2nd Gymnasium	1	3,200	3,200
Health Classroom	1	1,100	1,100
2nd gymnasium Storage	1	300	300
Fitness/Weight Room	1	1,600	1,600
Auxiliary Gymnasium	1	1,600	1,600
Locker Rooms	2	1,600	3,200
All Gender Locker Room	1	300	300
Storage Rooms	2	100	200
Toilet Rooms	2	150	300
Shower/Drying Towel Rooms	2	250	500
Laundry Room	1	120	120
Offices	2	280	560
Common Planning Area	1	200	200
General Storage	2	650	1,300
Outdoor Storage	1	200	200
ICB Storage	1	100	100
<u>Stage (co-located with Gymnasium)</u>	1	1,500	1,500

Science			
Laboratory	2	1,500	3,000
Preparation Room	1	250	250
Administrative			
Security Office	1	140	140
Subtotal for Addition			26,470
Linkages to Learning Suite			
Reception Area	1	200	200
Conference Room	1	300	300
Storage Closet	1	50	50
Therapy Room	1	250	250
Case Manager's Office	1	150	150
Site Coordinator Office	1	150	150
Staff Toilet	1	60	60
Subtotal for Linkages to Learning			1,160
Total Teaching Stations and Net. Sq. F	8		27,630

Project Information (Continued)

Site Design

Site Features:

Silver Spring International Middle School is situated on a 16.5-acre property located at 313 Wayne Avenue in Silver Spring, Maryland. The property has tax account number 01039241. The site is zoned as R-60 and is bounded to the north by residential development, to the south by Wayne Avenue, to the west by Dale Drive, and to the east by Sligo Creek Park.

There are multiple vehicular connection points to/from the site to the right-of-ways. The design does not change any of these access points. There is a parking lot off of Wayne Avenue to the south, Dale Drive to the west, and two parking areas with separate access points off Schuyler Road to the north. Pedestrian access from Schuyler Road to the main entrance of the middle school will meet the *Americans with Disabilities Act of 1990 (ADA)* regulations. Parking is currently provided in the existing parking areas to the north, west, and south of the building. The total existing parking on-site is 203 spaces —68 for SCES and 135 spaces for SSIMS. The existing parking lots to the south and west have been recently developed by the Purple Line. No additional parking is proposed as part of this project.

Stormwater Management:

Stormwater management will be met through a variety of Environmentally Sustainable Design (ESD) facilities, including micro-bioretenion, bioretention, landscaped infiltration, and permeable pavement. Stormwater facilities will be designed to reduce runoff quantity and to improve water quality.

Project Information (Continued)

Building Design

General Description:

Silver Spring International Middle School is a 3-story facility with two interior courtyards. The school was formerly Montgomery Blair High School and currently houses SSIMS and SCES. Although both schools share the same facility, they are interiorly separated and each school has an individual identity. After demolition of the auditorium, spaces for the physical education program and science classrooms will be constructed as part of the SSIMS Addition project. The design will include a secure and identifiable main entrance for SSIMS.

The proposed Addition will be connected to the existing school on the first and second levels only; the new third floor will be accessible only by middle school students via new stairs and an elevator

Classroom Technology:

The classrooms will be designed to support interactive educational technology that includes controlled, wireless computer access and interactive systems. The wireless technology throughout the building allows for mobility of computer systems and increased flexibility in classroom utilization. Individual classrooms are designed to provide a student seating arrangement that can be organized into small groups for project-oriented teaching, or students can face the teacher in a more traditional method.

Code Compliance/ Accessibility:

All areas of the building will be designed to meet state and local building codes, including fire, life-safety, and health standards. The proposed building will be in full compliance with the *2010 Americans with Disabilities Act (ADA)*.

Project Information (Continued)

Building Design (Continued)

Energy and Sustainability:

The proposed project will be designed and constructed with an emphasis on environmental sustainability and will comply with the International Green Construction Code (IGCC) and the 2018 International Energy Conservation Code (IECC). The architecture and engineering systems will align with MCPS facility management sustainability principles to ensure long-term operational effectiveness. Key features related to the sustainability include the following:

- Manage stormwater to reduce surface runoff quantity and improve quality
- Use highly reflective roof surfaces to reduce heat gain in the building
- Install green roof to mitigate stormwater site requirements
- Install water conserving and low-flow plumbing fixtures in the Addition
- Optimize the energy performance of the building by providing a highly energy efficient building envelope, lighting system, and HVAC system
- Optimize equipment selection, installation, and operation of new HVAC equipment through commissioning of the energy systems
- Adhere to construction indoor air quality management plans and use low-emitting building materials to safeguard occupant health
- Provide a high level of occupant control over individual lighting and thermal comfort to promote an enhanced indoor environment in the new building
- Use recycled construction materials that are regionally manufactured for the Addition
- Maximize daylight in classrooms
- Minimize background noise level from HVAC systems in classrooms and control reverberation time with sufficient sound absorption materials

Project Information (Continued)

Building Design (Continued)

Heating, Ventilation, and Air Conditioning System:

The first floor gymnasiums (both main and second) and stage areas, third floor auxiliary gymnasium, and the third floor fitness/weight room will be provided with space conditioning and ventilation by a series of packaged rooftop single-zone air-source heat pump units with auxiliary natural gas heating. The third floor locker room areas will be provided with space conditioning and ventilation by a single packaged rooftop dedicated outdoor air air-source heat pump unit with auxiliary natural gas heating. The third floor science and health classrooms will be provided with space conditioning by a variable-refrigerant-flow system and ventilation by a single packaged rooftop dedicated outdoor air air-source heat pump unit with auxiliary natural gas heating. The proposed Linkages to Learning renovation will be provided with space conditioning by a variable-refrigerant-flow system and ventilation by a single packaged rooftop dedicated outdoor air air-source heat pump unit with auxiliary natural gas heating.

Plumbing System

Building plumbing will include domestic water, sanitary waste and vent, stormwater, and gas piping systems. Domestic water heaters will be gas storage types with hot recirculation pumps. Electric heat pump water heaters will be evaluated for energy performance. Radon vent system will be provided for new construction at one system per 5,000 square feet (SF).

Fire Protection System

The school's existing fire protection system will be extended to support the proposed Addition. New zone valve assemblies will be provided at each floor level of the Addition. The building Addition will be fully sprinklered, provided with standpipes, and comply with National Fire Protection Association 13 and 14 requirements.

Energy Management System

Building automation system controls for the proposed Addition will be an extension of the existing HI Solutions direct digital control (DDC) system. All new control components will be networked to the central MCPS energy management control system for occupied/unoccupied settings and other energy management routines.

Project Information (Continued)

Electrical

Power Distribution

The existing 3,000-amp, 120/208-volt, 3-phase electrical service at the southwest corner of the building will be utilized to serve the renovated spaces. A new circuit breaker will be installed in existing available spaces of the existing, to remain, switchboard, manufactured by Federal Pacific, to serve new distribution equipment in the renovated area. An alternate will be included to replace the existing switchboard with a new switchboard configured to address Maryland Energy Management Agency (MEMA) shelter-in-place requirements. New panelboards located in a new electrical room will be provided to serve lighting, power, and mechanical systems loads. Dedicated panels will be provided in the main gymnasium and science prep room to serve local power loads. A branch circuit panel will be provided in the proposed Linkages to Learning renovation to serve lighting, receptacle, and mechanical loads.

Lighting and Lighting Controls:

Energy-efficient light emitting-diode (LED) lighting will be provided throughout. MCPS standard classroom lighting will be provided, which will have lighting relay room controllers, lighting control stations (switches), and ceiling sensors to control lighting fixtures and provide multiple levels of lighting. Emergency lighting will be automatically switched ON during a power outage.

Intercommunication and Sound Systems:

Intercommunications/public address system devices include speakers and call switches. Stand-alone sound reinforcement systems will be provided in the gymnasium, multipurpose room, and music rooms per MCPS standards.

Communications and Security Systems:

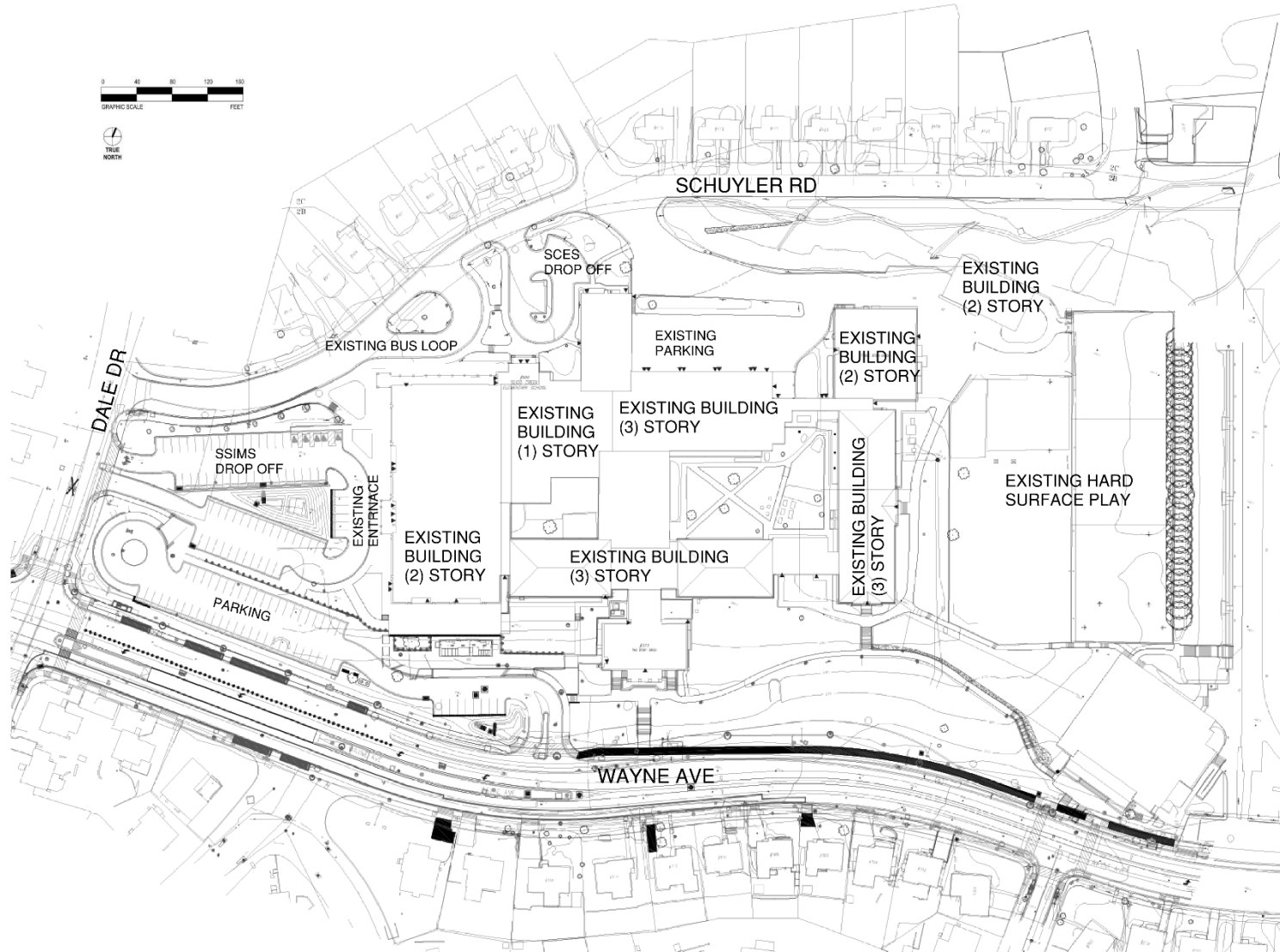
School Will have communications (data and voice) systems including wireless access points throughout for Wi-Fi. Provisions for audio/visual systems for instructional technology will be provided. Security systems will include door access control (card readers), intrusion detection (keypads and motion detectors), and video surveillance (cameras). Distributed antenna system will be provided for public safety radio for first responders.

This page intentionally left blank.

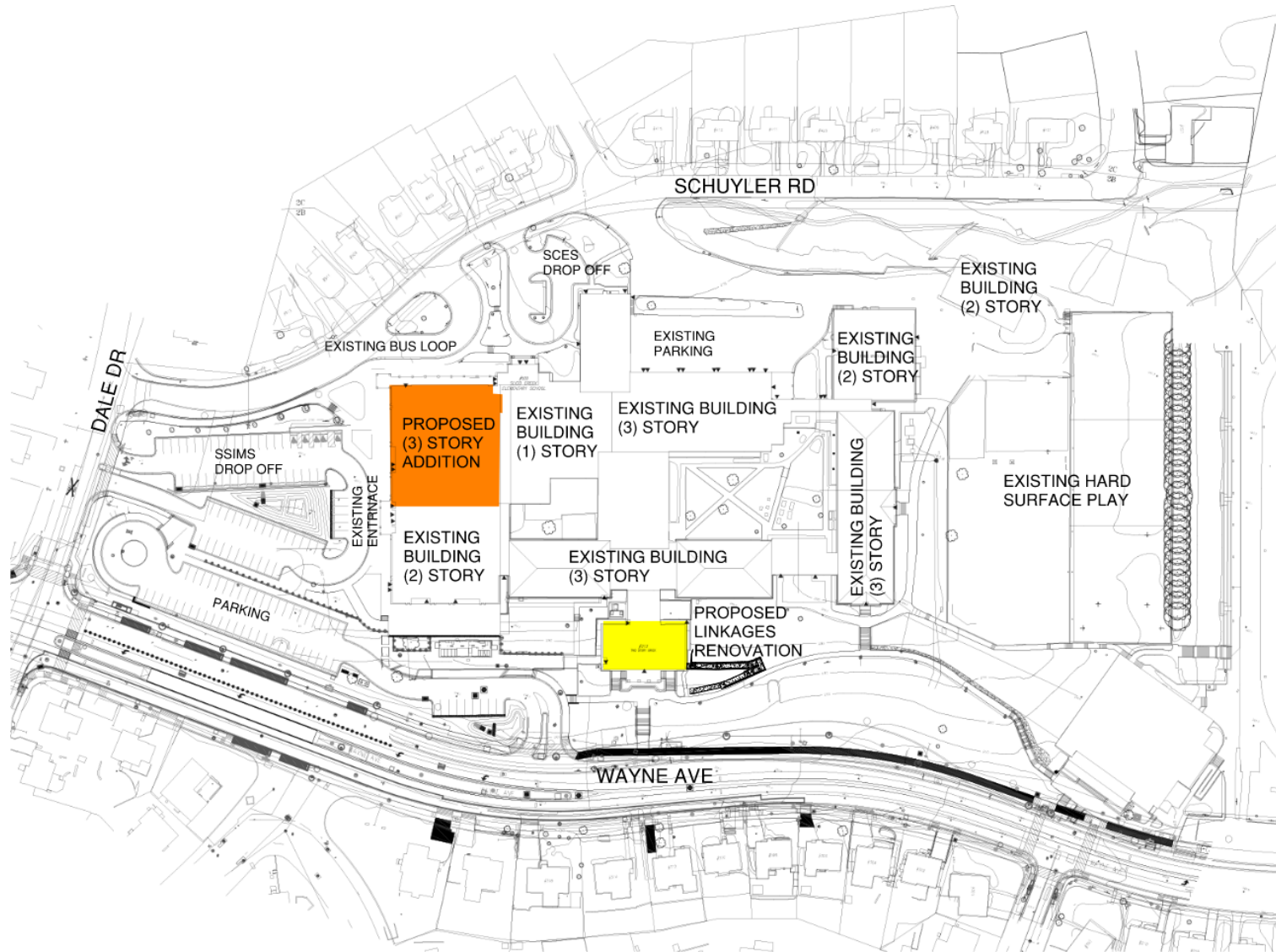
Vicinity Map



Existing Site Plan

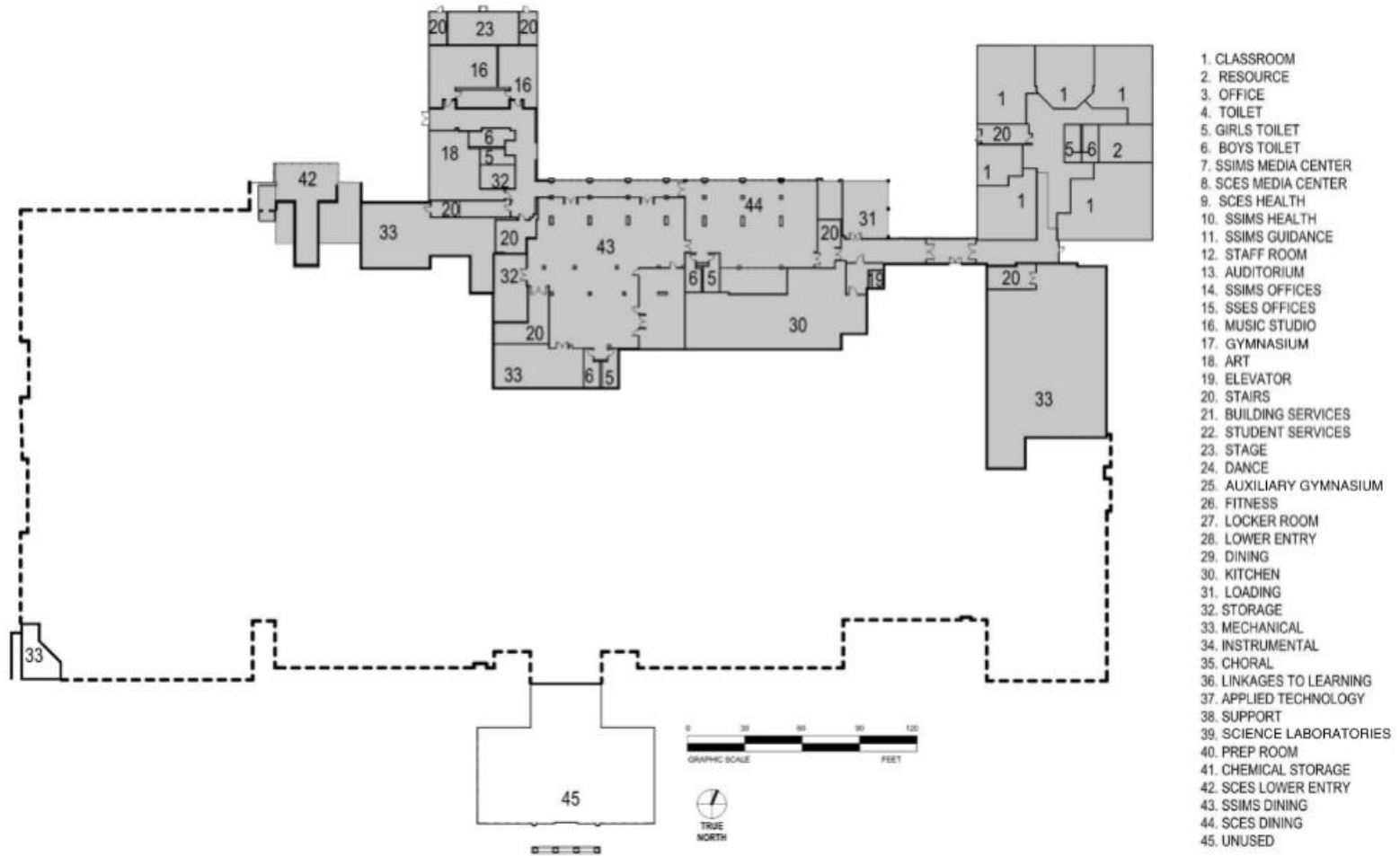


Proposed Site Plan

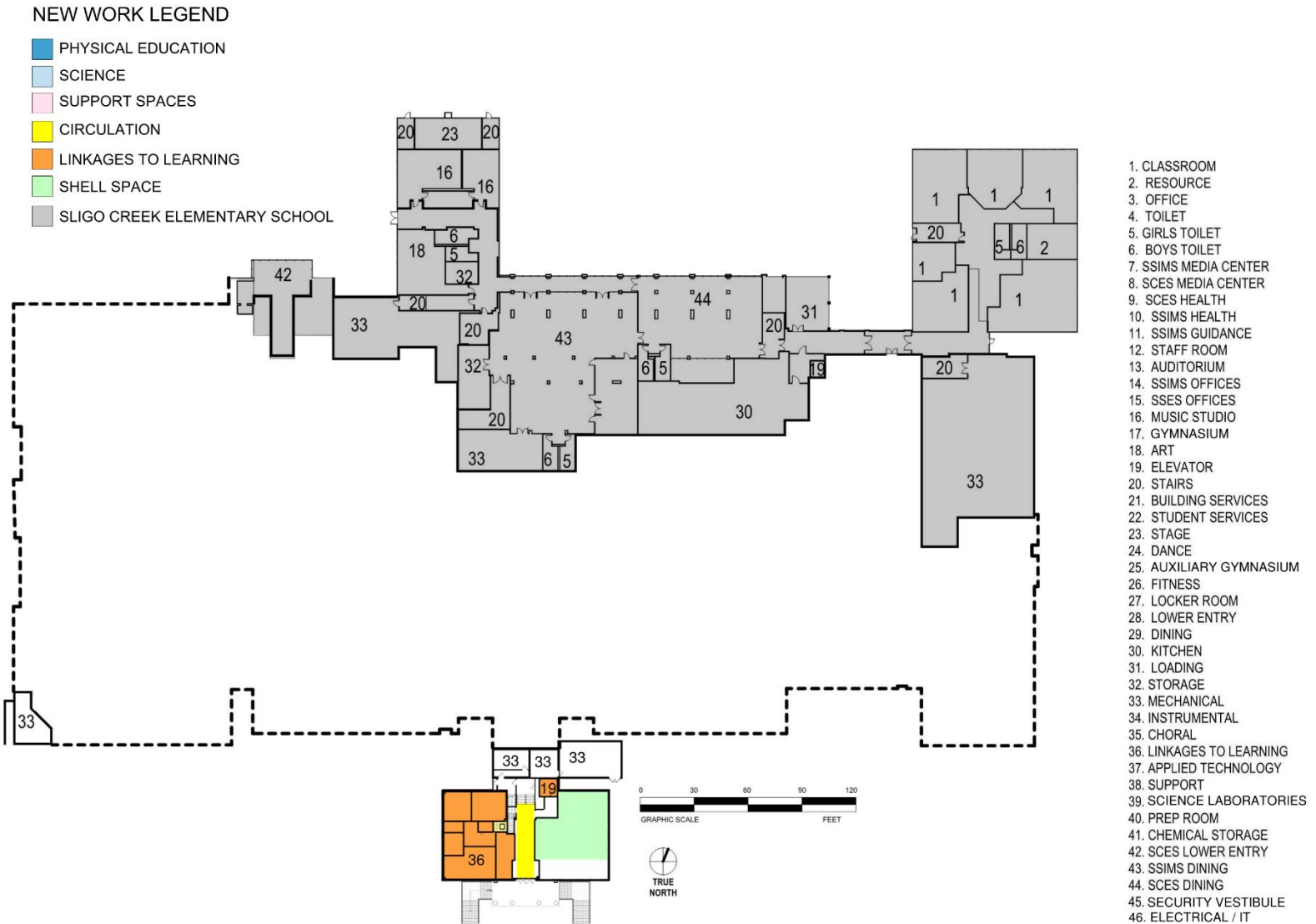


Existing Lower Level Plan

SLIGO CREEK ELEMENTARY SCHOOL



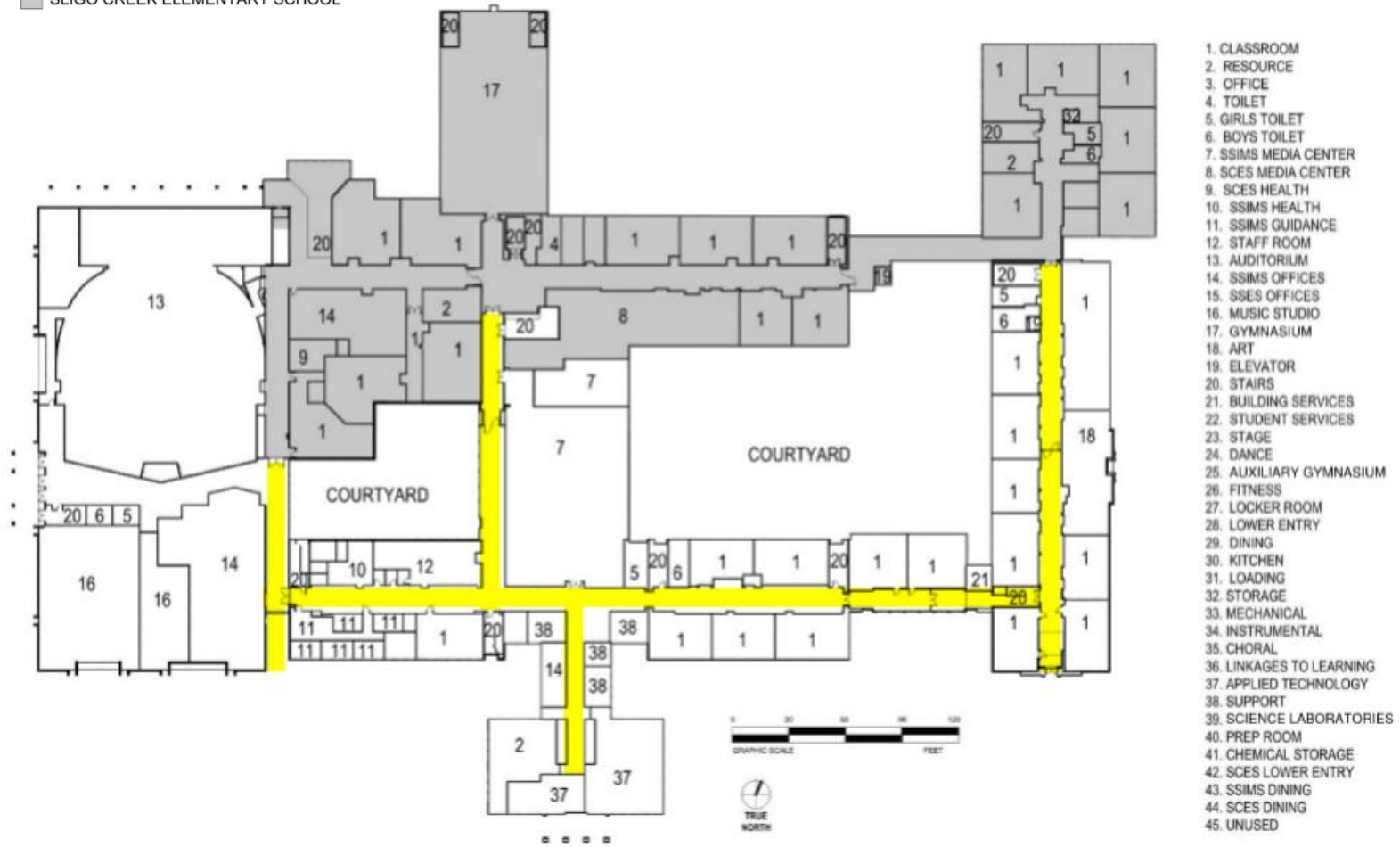
Proposed Lower Level Plan



Existing First Floor Plan

■ CIRCULATION

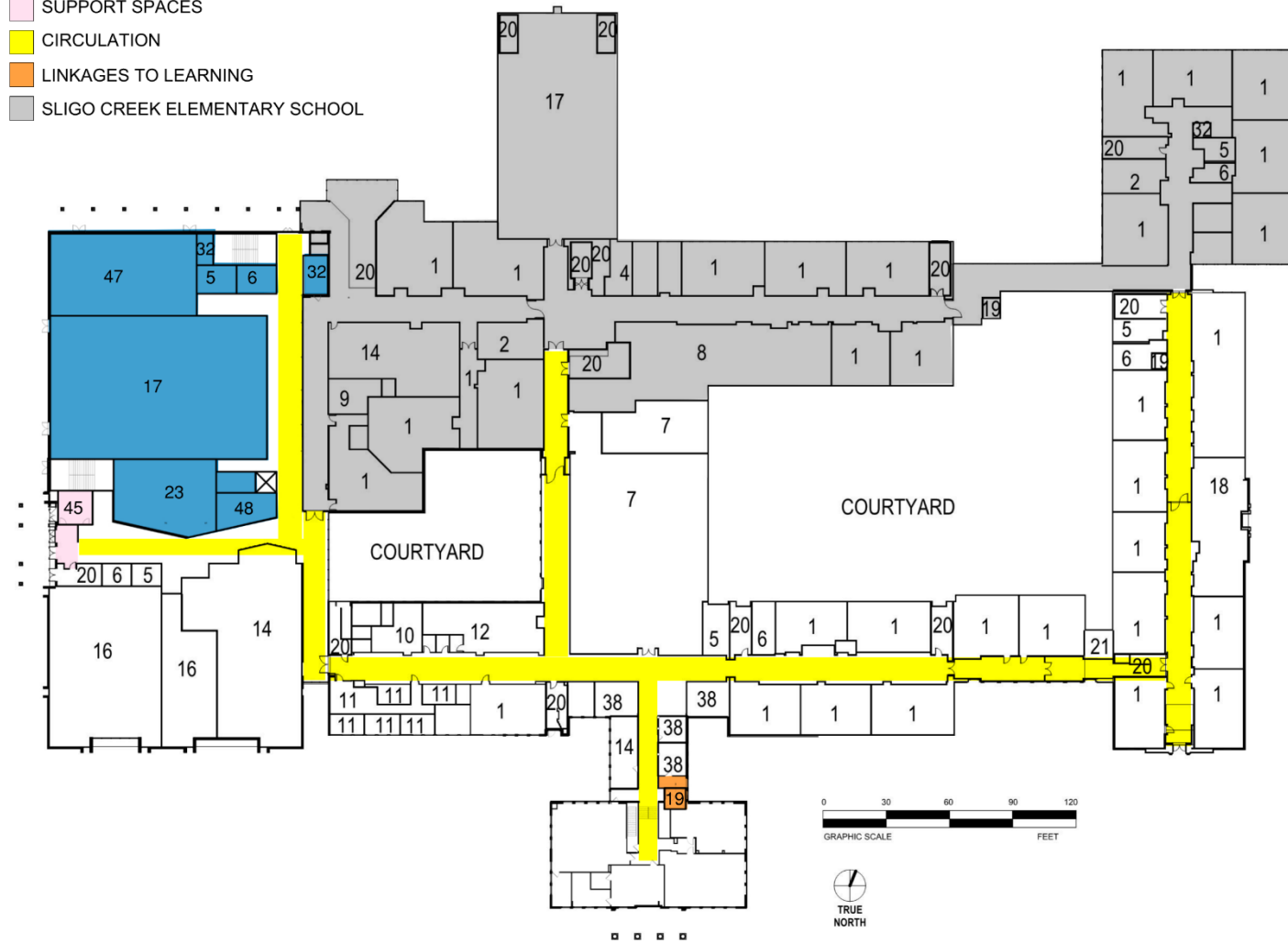
■ SLIGO CREEK ELEMENTARY SCHOOL



Proposed First Floor Plan

NEW WORK LEGEND

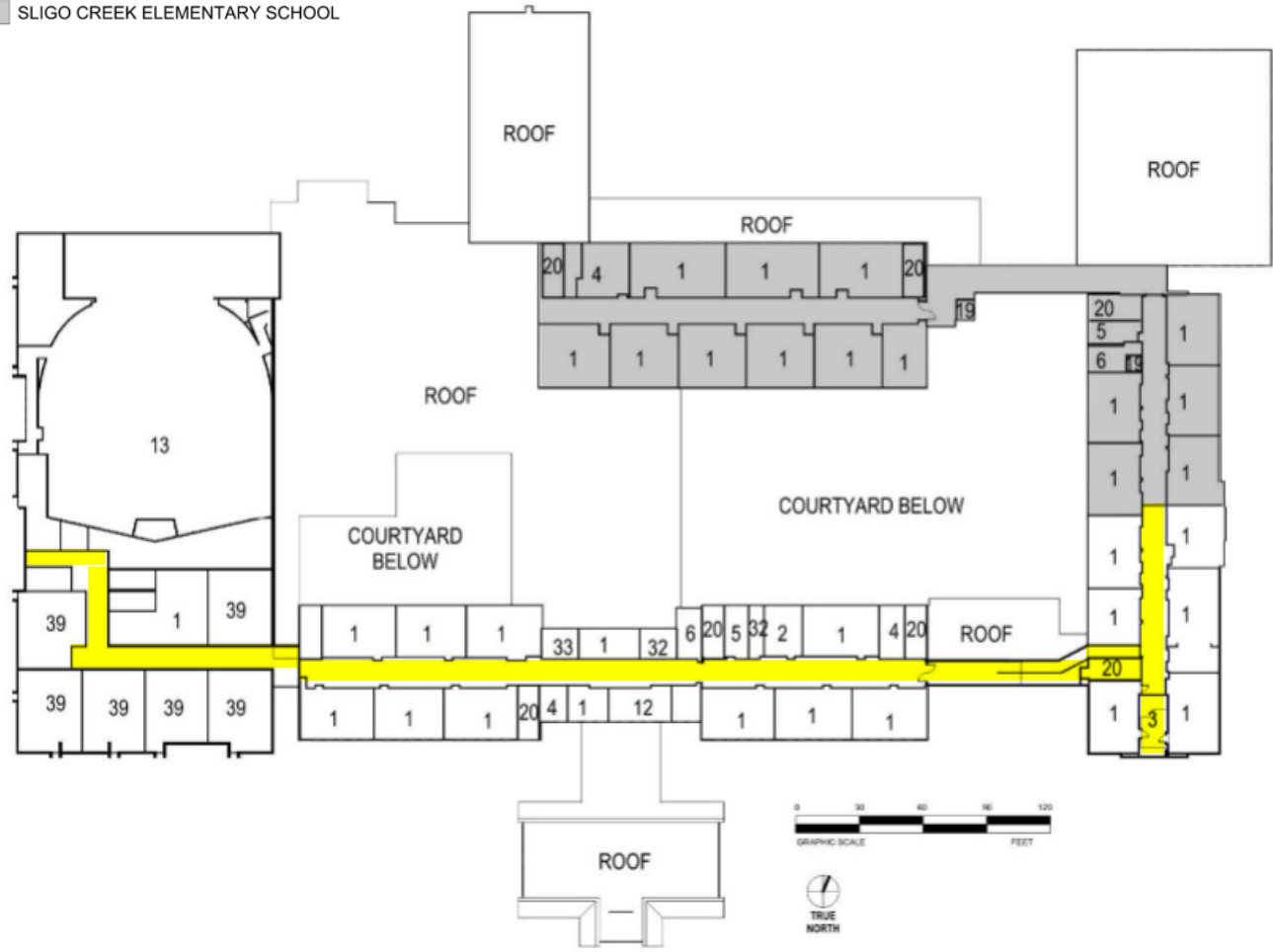
- PHYSICAL EDUCATION
- SCIENCE
- SUPPORT SPACES
- CIRCULATION
- LINKAGES TO LEARNING
- SLIGO CREEK ELEMENTARY SCHOOL



1. CLASSROOM
2. RESOURCE
3. OFFICE
4. TOILET
5. GIRLS TOILET
6. BOYS TOILET
7. SSIMS MEDIA CENTER
8. SCES MEDIA CENTER
9. SCES HEALTH
10. SSIMS HEALTH
11. SSIMS GUIDANCE
12. STAFF ROOM
13. AUDITORIUM
14. SSIMS OFFICES
15. SSES OFFICES
16. MUSIC STUDIO
17. GYMNASIUM
18. ART
19. ELEVATOR
20. STAIRS
21. BUILDING SERVICES
22. STUDENT SERVICES
23. STAGE
24. DANCE
25. AUXILIARY GYMNASIUM
26. FITNESS
27. LOCKER ROOM
28. LOWER ENTRY
29. DINING
30. KITCHEN
31. LOADING
32. STORAGE
33. MECHANICAL
34. INSTRUMENTAL
35. CHORAL
36. LINKAGES TO LEARNING
37. APPLIED TECHNOLOGY
38. SUPPORT
39. SCIENCE LABORATORIES
40. PREP ROOM
41. CHEMICAL STORAGE
42. SCES LOWER ENTRY
43. SSIMS DINING
44. SCES DINING
45. SECURITY VESTIBULE
46. ELECTRICAL / IT
47. 2ND GYMNASIUM
48. INCLUSIVE LOCKER ROOM

Existing Second Floor Plan

- CIRCULATION
- SLIGO CREEK ELEMENTARY SCHOOL



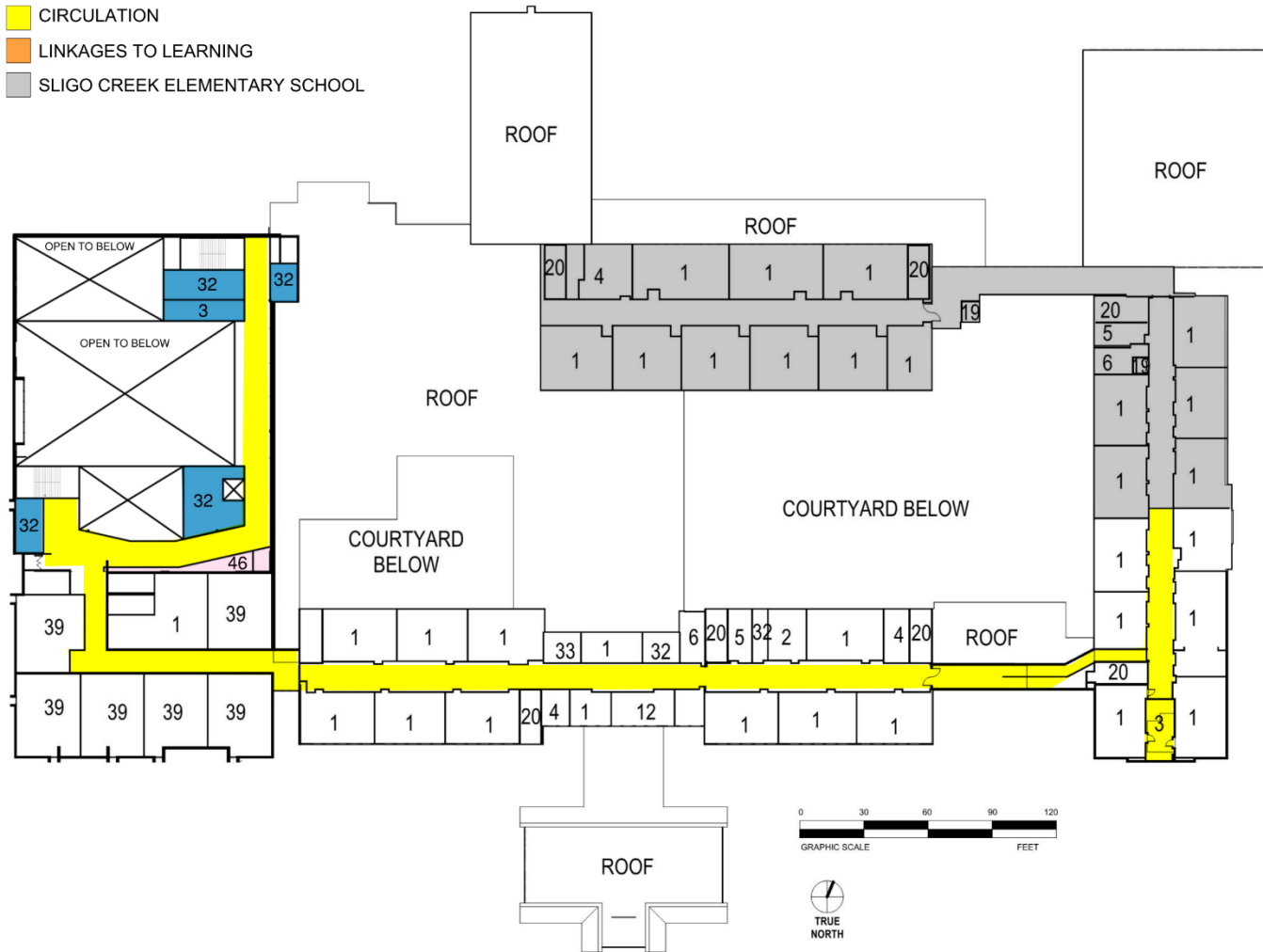
1. CLASSROOM
2. RESOURCE
3. OFFICE
4. TOILET
5. GIRLS TOILET
6. BOYS TOILET
7. SSIMS MEDIA CENTER
8. SCES MEDIA CENTER
9. SCES HEALTH
10. SSIMS HEALTH
11. SSIMS GUIDANCE
12. STAFF ROOM
13. AUDITORIUM
14. SSIMS OFFICES
15. SSES OFFICES
16. MUSIC STUDIO
17. GYM
18. ART
19. ELEVATOR
20. STAIRS
21. BUILDING SERVICES
22. STUDENT SERVICES
23. STAGE
24. DANCE
25. AUX GYM
26. FITNESS
27. LOCKER ROOM
28. LOWER ENTRY
29. DINING
30. KITCHEN
31. LOADING
32. STORAGE
33. MECHANICAL
34. INSTRUMENTAL
35. CHORAL
36. LINKAGES TO LEARNING
37. APPLIED TECHNOLOGY
38. SUPPORT
39. SCIENCE LAB
40. PREP ROOM
41. CHEMICAL STORAGE
42. SCES LOWER ENTRY
43. SSIMS DINING
44. SCES DINING
45. UNUSED



Proposed Second Floor Plan

NEW WORK LEGEND

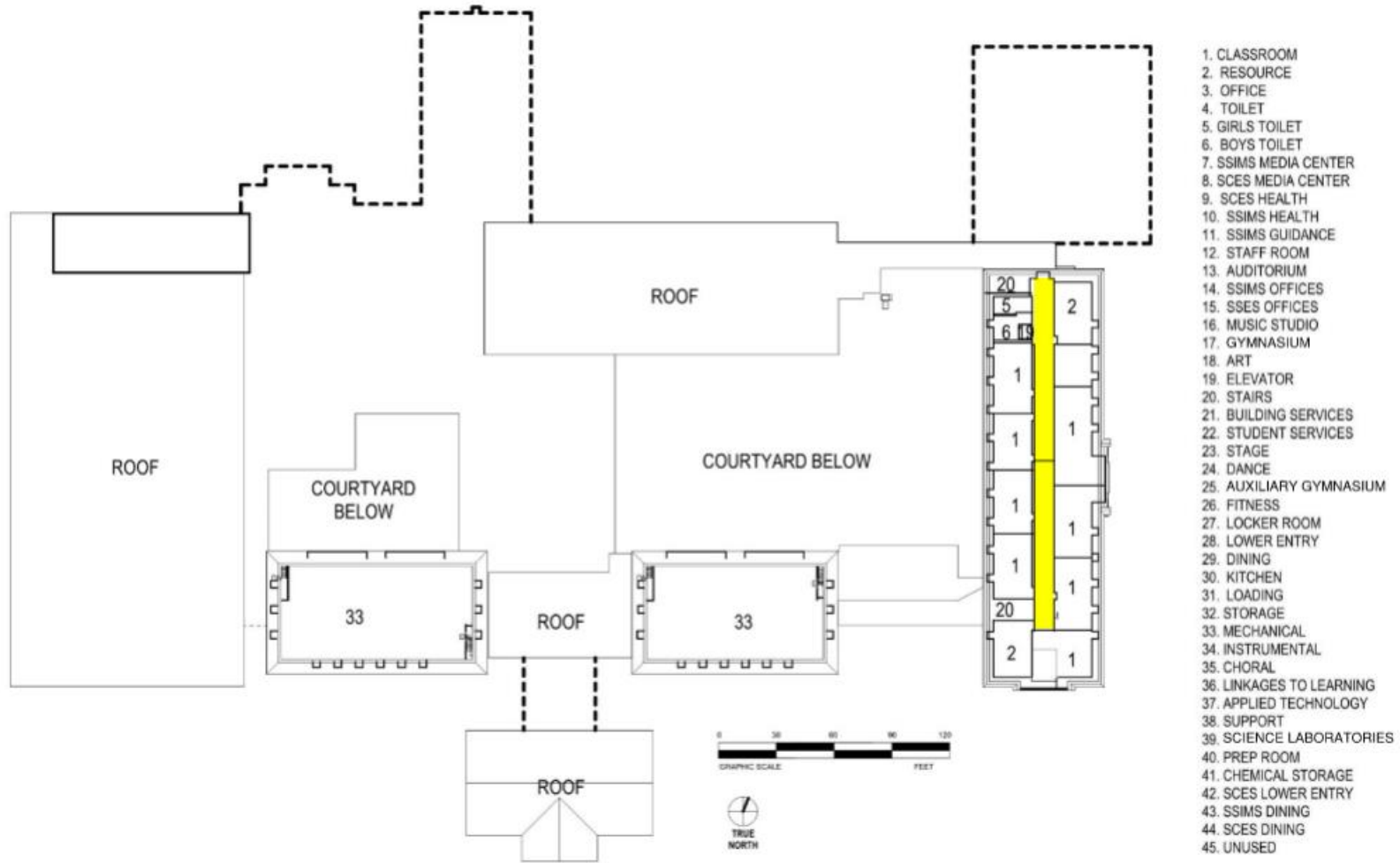
- PHYSICAL EDUCATION
- SCIENCE
- SUPPORT SPACES
- CIRCULATION
- LINKAGES TO LEARNING
- SLIGO CREEK ELEMENTARY SCHOOL



1. CLASSROOM
2. RESOURCE
3. OFFICE
4. TOILET
5. GIRLS TOILET
6. BOYS TOILET
7. SSIMS MEDIA CENTER
8. SCES MEDIA CENTER
9. SCES HEALTH
10. SSIMS HEALTH
11. SSIMS GUIDANCE
12. STAFF ROOM
13. AUDITORIUM
14. SSIMS OFFICES
15. SSES OFFICES
16. MUSIC STUDIO
17. GYMNASIUM
18. ART
19. ELEVATOR
20. STAIRS
21. BUILDING SERVICES
22. STUDENT SERVICES
23. STAGE
24. DANCE
25. AUXILIARY GYMNASIUM
26. FITNESS
27. LOCKER ROOM
28. LOWER ENTRY
29. DINING
30. KITCHEN
31. LOADING
32. STORAGE
33. MECHANICAL
34. INSTRUMENTAL
35. CHORAL
36. LINKAGES TO LEARNING
37. APPLIED TECHNOLOGY
38. SUPPORT
39. SCIENCE LABORATORIES
40. PREP ROOM
41. CHEMICAL STORAGE
42. SCES LOWER ENTRY
43. SSIMS DINING
44. SCES DINING
45. SECURITY VESTIBULE
46. ELECTRICAL / IT

Existing Third Floor Plan

 CIRCULATION

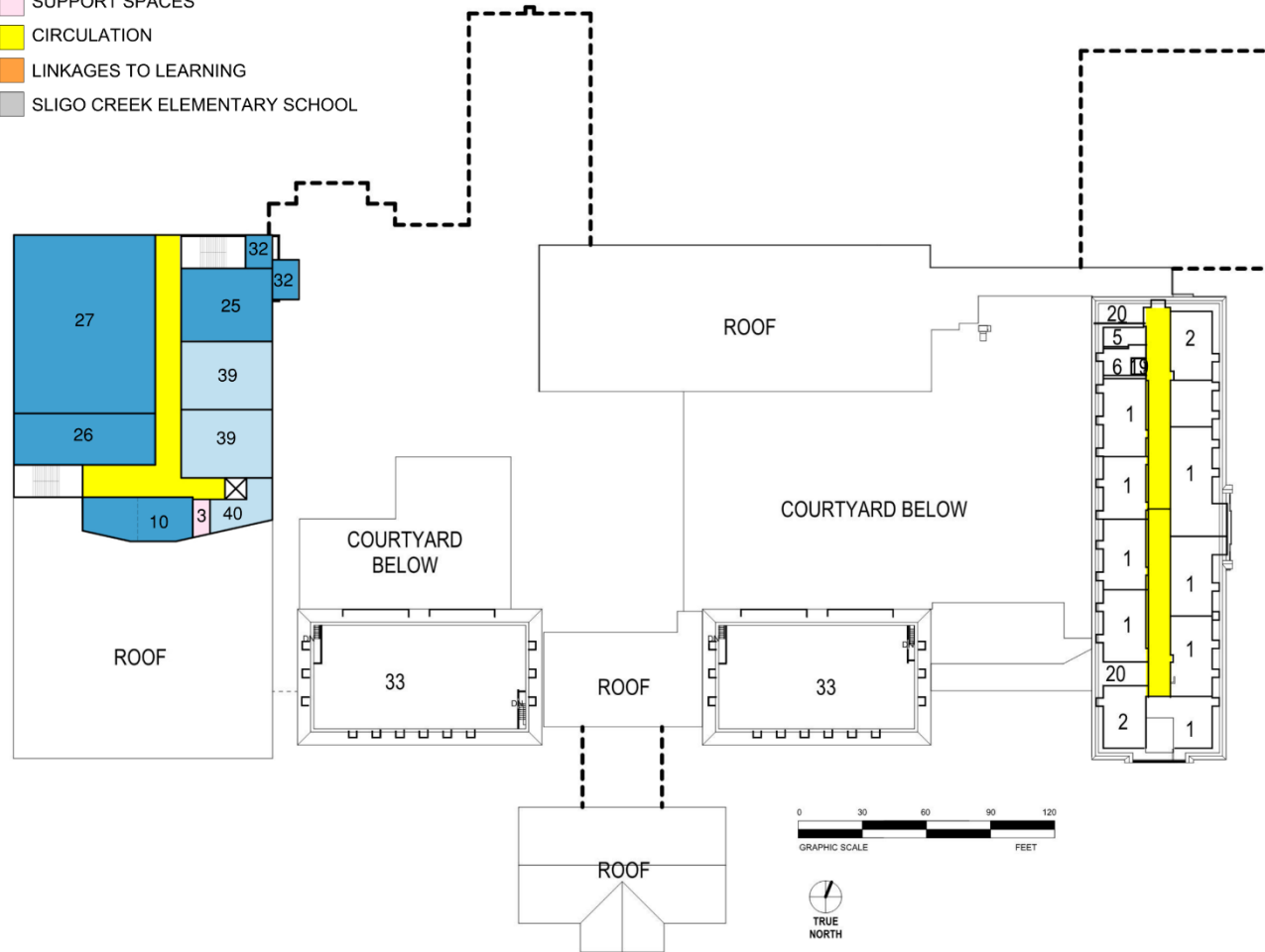


- 1. CLASSROOM
- 2. RESOURCE
- 3. OFFICE
- 4. TOILET
- 5. GIRLS TOILET
- 6. BOYS TOILET
- 7. SSIMS MEDIA CENTER
- 8. SCES MEDIA CENTER
- 9. SCES HEALTH
- 10. SSIMS HEALTH
- 11. SSIMS GUIDANCE
- 12. STAFF ROOM
- 13. AUDITORIUM
- 14. SSIMS OFFICES
- 15. SSES OFFICES
- 16. MUSIC STUDIO
- 17. GYMNASIUM
- 18. ART
- 19. ELEVATOR
- 20. STAIRS
- 21. BUILDING SERVICES
- 22. STUDENT SERVICES
- 23. STAGE
- 24. DANCE
- 25. AUXILIARY GYMNASIUM
- 26. FITNESS
- 27. LOCKER ROOM
- 28. LOWER ENTRY
- 29. DINING
- 30. KITCHEN
- 31. LOADING
- 32. STORAGE
- 33. MECHANICAL
- 34. INSTRUMENTAL
- 35. CHORAL
- 36. LINKAGES TO LEARNING
- 37. APPLIED TECHNOLOGY
- 38. SUPPORT
- 39. SCIENCE LABORATORIES
- 40. PREP ROOM
- 41. CHEMICAL STORAGE
- 42. SCES LOWER ENTRY
- 43. SSIMS DINING
- 44. SCES DINING
- 45. UNUSED

Proposed Third Floor Plan

NEW WORK LEGEND

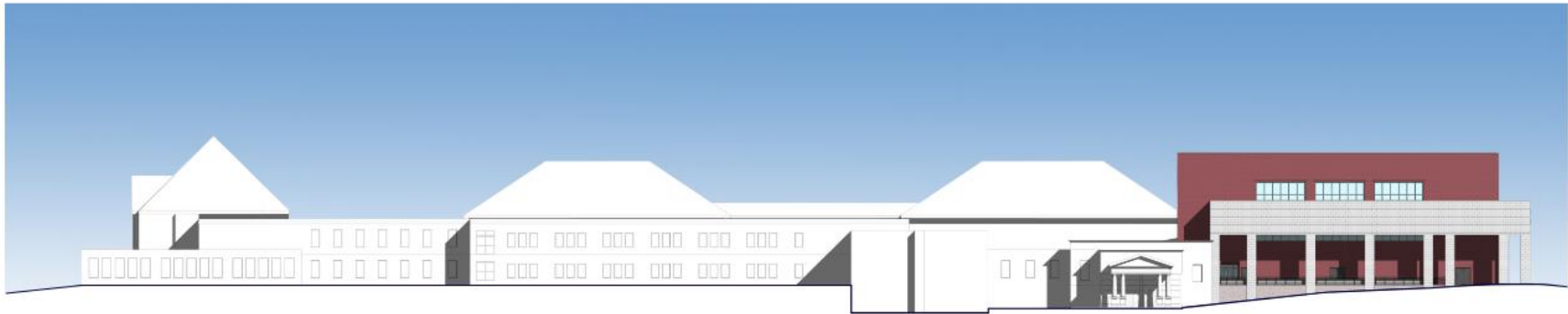
- PHYSICAL EDUCATION
- SCIENCE
- SUPPORT SPACES
- CIRCULATION
- LINKAGES TO LEARNING
- SLIGO CREEK ELEMENTARY SCHOOL



1. CLASSROOM
2. RESOURCE
3. OFFICE
4. TOILET
5. GIRLS TOILET
6. BOYS TOILET
7. SSIMS MEDIA CENTER
8. SCES MEDIA CENTER
9. SCES HEALTH
10. SSIMS HEALTH
11. SSIMS GUIDANCE
12. STAFF ROOM
13. AUDITORIUM
14. SSIMS OFFICES
15. SSES OFFICES
16. MUSIC STUDIO
17. GYMNASIUM
18. ART
19. ELEVATOR
20. STAIRS
21. BUILDING SERVICES
22. STUDENT SERVICES
23. STAGE
24. DANCE
25. AUXILIARY GYMNASIUM
26. FITNESS
27. LOCKER ROOM
28. LOWER ENTRY
29. DINING
30. KITCHEN
31. LOADING
32. STORAGE
33. MECHANICAL
34. INSTRUMENTAL
35. CHORAL
36. LINKAGES TO LEARNING
37. APPLIED TECHNOLOGY
38. SUPPORT
39. SCIENCE LABORATORIES
40. PREP ROOM
41. CHEMICAL STORAGE
42. SCES LOWER ENTRY
43. SSIMS DINING
44. SCES DINING
45. SECURITY VESTIBULE
46. ELECTRICAL / IT

This page intentionally left blank.

Proposed Elevations



NORTH



WEST



SOUTH

Rendering



Project Team, Schedule, and Estimated Construction Costs

Design Team

Architect:	RRMM Architects, P.C.
Civil Engineer:	Adtek Engineers, Inc.
Structural Engineer:	Holbert Apple Associates, Inc.
Mechanical/Electrical/Plumbing Engineer:	James Posey Associates, Inc.

Project Schedule

Preliminary Plans Presentation:	October 2021
Construction Documents Completed:	June 2022
Award Construction Contract:	March 2023
Project Completed:	August 2024

Facility Data

Existing Building:	Existing:	251,530 square feet
	Demolition:	33,400 square feet
New Construction	SSIMS Addition:	36,335 square feet
	SSIMS Renovation:	10,350 square feet

Program Capacity:	1175
Parking Spaces:	203

Estimated Construction Costs

Construction Budget for Building and Site:	\$15,847,000
--	--------------