

# SIMPLE BIB & BURP CLOTH

Designed by Robert Kaufman Fabrics  
[www.robertkaufman.com](http://www.robertkaufman.com)

Featuring **Build, Bang,  
Boom!**



Finished project measures approximately: 8" x 12"

Difficulty Rating: **Beginner**

**ROBERTKAUFMAN**  
F A B R I C S

For questions about this pattern, please email [Patterns@RobertKaufman.com](mailto:Patterns@RobertKaufman.com).

## Fabric and Supplies Needed

Fabric amounts based on yardage that is 42" wide.

### **TO MAKE THREE BIBS AND THREE BURP CLOTHS**

Color	Fabric	Name/SKU	Yardage	Color	Fabric	Name/SKU	Yardage
	A	SRK-20386-1 WHITE	1/2 yard		D	SRKF-16944-3 RED	1/2 yard
	B	SRK-20385-1 WHITE	1/2 yard		E	SRKF-16944-4 BLUE	1/2 yard
	C	SRK-20384-1 WHITE	1/2 yard		F	SRKF-16944-5 YELLOW	1/2 yard

Copyright 2020, Robert Kaufman  
For individual use only - Not for resale

You will also need:  
Batting or flannel scrap, large enough for each template to be used three times.  
Six 1" squares of sewable hook and loop tape.

### Notes Before You Begin

- Read through all of the instructions before beginning.
- All of the seam allowances are 1/4" unless otherwise noted.
- Press seam allowances open unless otherwise noted.
- Width of fabric (WOF) is equal to at least 42" wide.
- Right sides together has been abbreviated to RST.
- Remember to measure twice and cut once!

### Cutting Instructions

**From each of Fabrics A, B, and C**  
cut one of each template

**From the batting/flannel scrap**  
cut three of each template

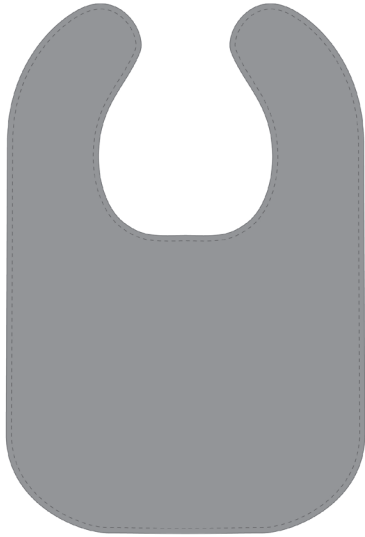
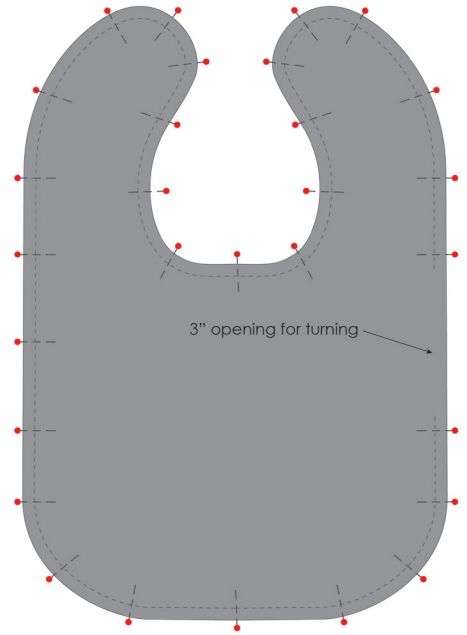
## Assembly Instructions

**Step 1:** Pair each of Fabrics A-C with Fabrics D-F. One will be the front of each bib/burp cloth and one will be the backing. Layer the fabrics in this order:

- The front right side up
- The backing fabric right side down
- Batting/Flannel

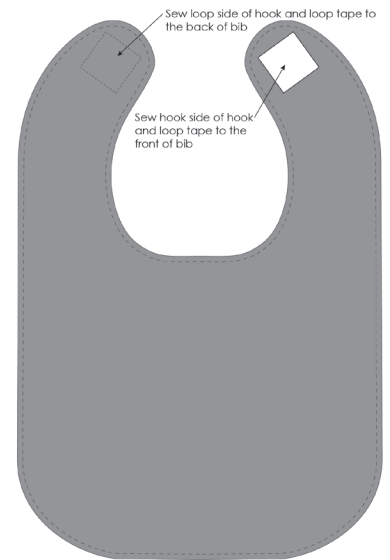
**Step 2:** Pin carefully around the edges, taking care to match the curves. Mark a 3" opening along one edge. Sew around the edge, using a 1/4" seam, backstitching at each edge of the opening.

**Step 3:** Turn the bib right side out through the opening. Tuck the edges of the opening in and press all around the edge of the bib, pinning the raw edges in at the opening.

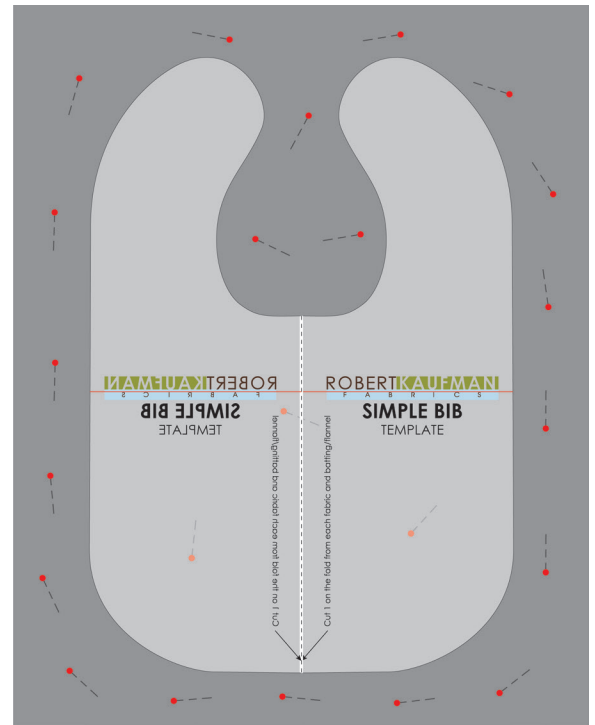


**Step 4:** Edgestitch around the entire bib using a 1/8" seam, closing the opening as you sew.

**Step 5:** Pin the 1" squares of sewable hook and loop tape to the ends of each of the bib tabs. Be sure that they will meet up to secure the bib once the bib is on the child. Sew around each square of hook and loop tape, backstitching to secure.



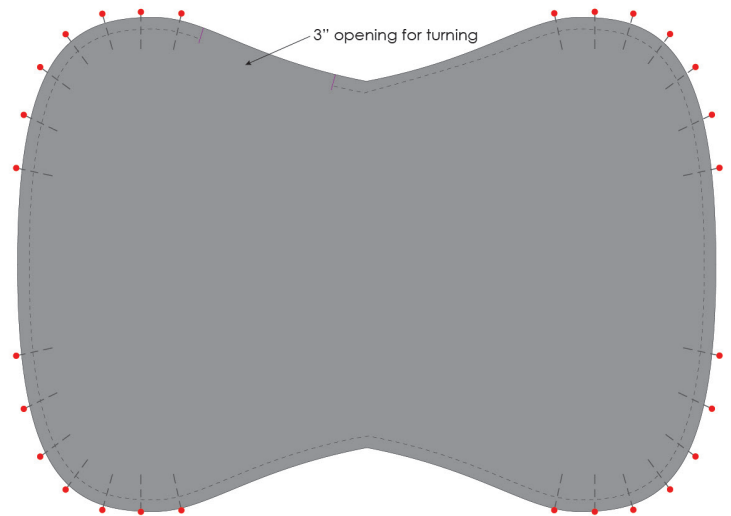
**Alternate construction method:** If sewing curves is new to you, do not cut the fabric first. Instead, layer the fabrics as in Step 1. Then using the Template and a fabric marker, mark the bib shape on the batting/flannel. Then pin outside this shape (adding a few pins in the center of the bib to prevent any shifting). Sew on your marked line, leaving a 3-4" opening. Cut out the bib, 1/4" from your stitching line, then proceed with Step 3.



## Assemble the Burp Cloth

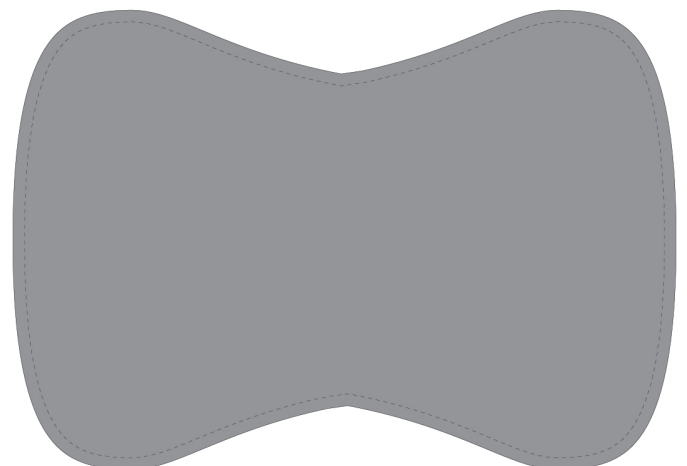
**Step 1:** Pair each of Fabrics A-C with Fabrics D-F. One will be the front of each bib/burp cloth and one will be the backing. Layer the fabrics in this order:  
 The front right side up  
 The backing fabric right side down  
 Batting/Flannel

**Step 2:** Pin carefully around the edges, taking care to match the curves. Mark a 3" opening along one edge. Sew around the edge, using a 1/4" seam, backstitching at each edge of the opening.



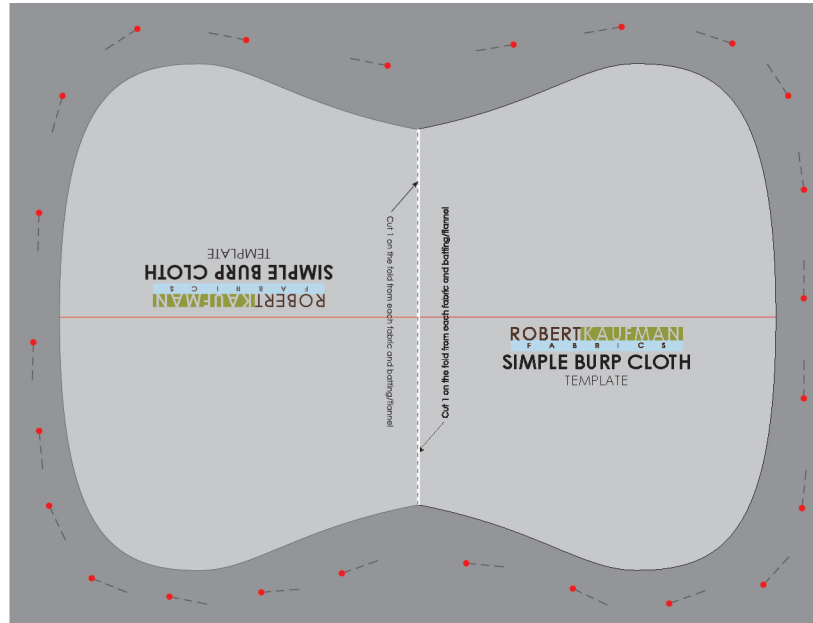
**Step 3:** Turn the burp cloth right side out through the opening. Tuck the edges of the opening in and press all around the edge of the burp cloth, pinning the raw edges in at the opening.

**Step 4:** Edgestitch around the entire burp cloth using a 1/8" seam, closing the opening as you sew.



## Alternate construction method

If sewing curves is new to you, do not cut the fabric first. Instead, layer the fabrics as in Step 1. Then using the Template and a fabric marker, mark the burp cloth shape on the batting/flannel. Then pin outside this shape (adding a few pins in the center of the burp cloth to prevent any shifting). Sew on your marked line, leaving a 3-4" opening. Cut out the burp cloth, 1/4" from your stitching line, then proceed with Step 3.



Print at 100%.

Check size printed correctly using 1" box for scale prior to cutting fabric.

Align two parts of template along red line. Tape together to create one large template.



**ROBERT KAUFMAN**  
F A B R I C S  
**SIMPLE BIB**  
TEMPLATE

*Cut 1 on the fold: Fabric A, Fabric B and batting*



**ROBERT KAUFMAN**  
F A B R I C S  
**SIMPLE BIB**

1" box for  
scale



: Fabric A, Fabric B and batting

**ROBERTKAUFMAN**  
F A B R I C S

1" box for scale



This pattern may be used for personal purposes only and may not be reproduced in any form without the express permission from Robert Kaufman Fabrics. This pattern is not for resale. All patterns, unless otherwise attributed, are © Robert Kaufman Co., Inc. 2005-2020. All rights reserved.