

COLOURS

Simply Beautiful

Sonya®



Sonya® is the essence of more than just beauty: it is an expression of rejuvenation, admiration and love. As an expression of love and admiration for his only daughter, Sonya, and his beautiful wife, Ruth, our Chairman of the Board and CEO, Rex Maughan, dedicated the unique products that comprise the Sonya® Colour Collection and the Sonya® Skin Care Collection. Our collections' unique formulation of ingredients including aloe vera, marine extracts, chamomile and avocado oil give back to your skin. They help to protect, soothe and moisturize. We invite you to experiment with the simplicity of beauty that is Sonya®, and we hope you will love it as much as we do.

*Sonya® es la esencia de algo más que belleza: es también una expresión de amor, rejuvenecimiento y admiración. Como expresión de amor y admiración por su hija única Sonya y su bella esposa Ruth, nuestro Presidente de la Junta Directiva y CEO, Rex Maughan, ha dedicado esta exclusiva gama de color que forma parte de Sonya® Colour Collection y Sonya® Skin Care Collection. La formulación única de los ingredientes en nuestras colecciones, los cuales incluyen sábila, extractos marinos, manzanilla y aceite de aguacate, es un regalo para su cutis que ayuda a proteger, suavizar y humectar. Le invitamos a que experimente con la sencillez y belleza de Sonya® y esperamos que usted la encuentre tan fascinante como nosotros.*

The Sonya® Colour Collection and the Sonya® Skin Care Collection were created to work in combination and help you look as beautiful on the outside as you feel on the inside. Sonya's® unique blend of natural ingredients, from pure aloe vera and antioxidant vitamins, to marine extracts, white tea extract and chamomile, can help protect, nourish and soothe the skin. Let Sonya® help you take the guesswork out of looking beautiful!

Las colecciones de Sonya® Colour y Skin Care fueron creadas para ayudarle a lucir tan bella por fuera como se siente por dentro. La exclusiva combinación de ingredientes naturales de Sonya®, comenzando con áloe vera pura y vitaminas antioxidantes, hasta extractos marinos, extracto de té blanco y manzanilla, puede ayudarle a proteger, nutrir y suavizar su cutis. ¡Con Sonya® es fácil lucir más bella!



## Cream to Powder Foundation

Ideal for all skin types, our 12 true-to-life shades give you a smooth, flawless complexion.

*12 tonos que armonizan con la tonalidad única de su piel le ofrecen un cutis sedoso e impecable.*



.106-1397-10



107  
porcelain



108  
soft ivory



109  
rose beige



110  
sunset beige



111  
fawn



112  
butter



113  
golden sun



114  
mocha



115  
raisin



116  
chocolate



182  
natural beige



183  
vanilla bisque

## New! Sonya® Aloe Mineral Makeup

*The secret to a natural, healthy glow.*

Sonya® Aloe Mineral Makeup glides on like a dream, giving skin a luminous glow. Acting as a concealer, foundation and powder all in one, this multi-tasking powder seamlessly blends and gives an ultimately natural-looking skin finish.

*El secreto para un brillo saludable y natural.*

*Sonya® Aloe Mineral Makeup se desliza como terciopelo, dando al cutis un brillo luminoso. Al funcionar al mismo tiempo como polvo, corrector y base, este polvo mineral multiusos se difumina de manera homogénea y le ofrece al cutis un acabado natural.*

.117-1536-12



308  
natural



309  
amber



310  
caramel

## Colour Concealer Wheel 184

Our unique, five-in-one Colour Concealer Wheel minimizes imperfections and evens out skin tone.

*Nuestra excepcional Colour Concealer Wheel de cinco correctores en uno minimiza las imperfecciones y da un tono uniforme al cutis.*



mint



yellow



light beige



lilac



beige

*"The Sonya products are absolutely fabulous! The color lasts for hours and the consistency blends perfectly with the skin."*

Rebecca Robinson  
Miss Texas 2008



Rebecca is wearing Vanilla Bisque Cream to Powder Foundation with Sonya Aloe Mineral Makeup in Natural. (Barely Pink Palette and Sunglow Lip Gloss complete Rebecca's cover look.)

## Blush

Add a natural, healthy glow to your cheeks. Soft-to-the-touch and kind to your skin, these elegant powders glide on evenly to define your cheekbones and enhance your complexion.

*Agregue un brillo natural y saludable a sus mejillas. Suaves al tacto y delicados sobre su piel, estos elegantes polvos se deslizan uniformemente para definir sus pómulos y realzar el color de su tez.*



.069-907-15



156  
nature



157  
sienna



158  
bashful



159  
rosewood



160  
flare



161  
rose petal



162  
berry rose



163  
mauve



164  
wildberry



165  
sunset



166  
brick

## Translucent Pressed Powder

Sonya® Translucent Pressed Powder is enhanced with the world's finest micronized powders to give your skin a sheer, silky, luxurious finish. May be used alone or over foundation for a long-lasting finish and is suitable for all skin types.



*Sonya® Translucent Pressed Powder ha sido mejorado con los polvos micronizados más finos para dar a su cutis un acabado lujoso, brillante y sedoso. Puede usarse solo o sobre la base para un maquillaje perdurable. Es ideal para retoques durante el día y adecuado para todo tipo de cutis.*

.069-907-15



167  
light



168  
medium



169  
deep

*"The Sonya Colour Collection is fantastic! On application I get a natural, finished look and, furthermore, the products nourish and protect my skin."*

Yvonne Kabiru  
Miss Sonya Africa  
Distributor since October 2006



Yvonne is wearing Sonya Translucent Pressed Powder in Deep with Brick Blush.

# Eyeshadow

Unlock the secret to perfect eyes with our 24 soft, powder shades - from shimmery pearls to velvety mattes.

*Descubra el secreto de ojos perfectos con nuestras 24 delicadas sombras en polvo - desde tonos de perla reluciente hasta mates aterciopelados.*



.059-767-18

\*Shimmer shades

\*Tonos brillantes



131  
phantom



132  
french vanilla



133  
ginger



134  
mink



135  
linen



136  
blue bayou



137  
barely there



138  
cool breeze



139  
maple syrup



140  
fudge brownie



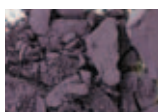
141  
cactus green



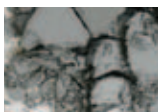
142  
satin



143  
birch



144  
wildberry



145  
sterling\*



147  
purple rain



148  
crystal waters\*



149  
moonlight\*



150  
pot of gold\*



151  
glacier ice\*



152  
hologram\*



153  
sunfire\*



154  
whipped cream



155  
charcoal



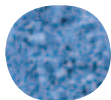
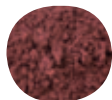
## Eyeshadow Trios

Highlight, shade and define with these perfect colour combinations.

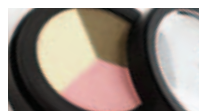
*Resalte y defina con estas perfectas combinaciones de color.*



203 springtime\*



204 sedona\*



.048-627-20



.106-1397-15

## Eye Pencils

Our creamy and smooth eye pencils deliver a perfect application every time.

*Nuestros delineadores cremosos y suaves le ofrecen siempre una aplicación perfecta.*



174  
midnight black



176  
burnished brown



178  
jazz



180  
white clarifier  
.048-627-20

## Mascara & Brow Fix

Our exclusive mascara contains aloe vera to condition and lengthen while leaving lashes soft, supple and luxurious.

*Nuestro rímel exclusivo contiene áloe vera para acondicionar, al mismo tiempo que deja las pestañas suaves, flexibles y abundantes.*



170  
black



171  
brown/black



172  
brow fix

.064-837-15



## Sonya® Aloe Eye Makeup Remover 186

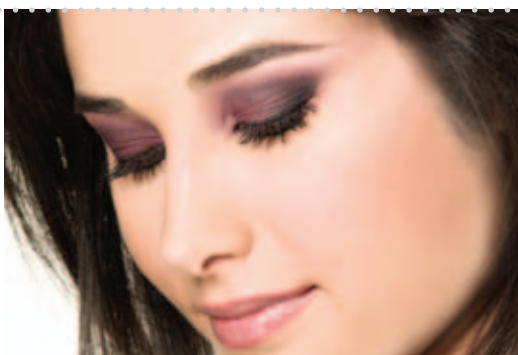
Our unique, oil-free formula removes eye makeup gently, yet effectively. Its main ingredient, aloe vera gel, conditions and nourishes the delicate eye area.

*Nuestra fórmula única sin aceite quita el maquillaje de manera delicada y eficaz. Su principal ingrediente, el gel de sábila, acondiciona y repone el área delicada de los ojos.*

.043-557-18

*"I love the colors of the Sonya Eyeshadows, as I can apply them differently to achieve a natural day or glamorous evening look!"*

Paula Gabriela Vasilescu  
Miss Sonya Europe  
Distributor since May 2006



Paula is wearing Wildberry and Phantom Eyeshadow, Midnight Black Eye Pencil and Black Mascara.

## Lipstick

Our 16 shades of long-lasting, aloe-enhanced lipsticks are ideal to use alone, or combine them to create your own, unique shades. Add Sonya® Lip Gloss for extra shine.

*Nuestros 16 tonos de labiales en colores duraderos, ricos en sábila, son ideales para usarse solos o combinarlos y crear su propio tono único. Agregue el brillo labial de Lip Gloss para lustre adicional.*



.064-837-15

\*Shimmer Shades

\*Tonos brillantes



117  
peach fuzz



118  
coffee cream



119  
barely pink



120  
sheer bliss



121  
chocolate kisses



122  
almond



123  
pink champagne



124  
dusty rose



125  
brandy  
ice



126  
wineberry



127  
hologram\*



128  
solid gold\*



129  
deepest love red



130  
porsche red



201  
crystal plum\*



202  
pink reflection\*

## Lip Pencils

Our creamy and smooth lip pencils glide on easily to line and define your lips.

*Nuestros cremosos y suaves lápices labiales se deslizan fácilmente para delinear y definir sus labios.*

.048-627-20



173  
mahogany



175  
cocoa



177  
mystique



179  
grapevine



181  
golden shimmer\*

Golden Shimmer may also be used as an eye pencil.  
*Golden Shimmer puede usarse también como delineador de ojos.*

## Lip Gloss

Liven-up your lip colour with a long-lasting, aloe vera shine.

*Haga vibrar el color de sus labios con el brillo perdurable de áloe vera.*

.048-627-18



190  
crystal clear



191  
vanilla pearl\*



192  
sunglow\*



193  
berry mauve

*"Our Sonya Lipsticks are so magnificent and ever-changing that I can blend colors to suit whatever event or occasion that I am attending."*

Jessica Kuo  
Miss Sonya Asia  
Distributor since December 1994



Jessica is wearing Solid Gold Lipstick over Golden Shimmer Lip Pencil with Sunglow Lip Gloss.

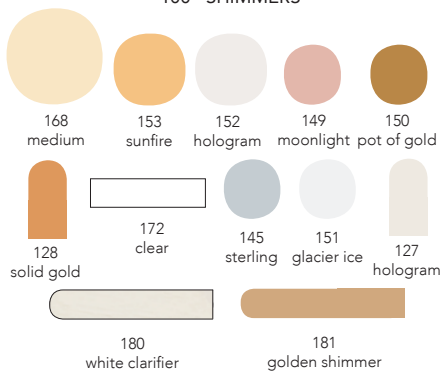


Each Palette contains: 1 Translucent Powder, 2 Blushes, 1 Eye Pencil, 4 Eyeshadows, 1 Mascara or Brow Fix, 1 Lip Pencil, and 2 Lipsticks.

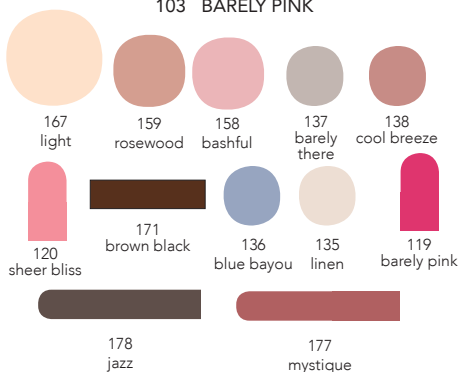
Cada Paleta contiene: 1 Polvo Traslúcido, 2 Rubores, 1 Delineador de Ojos, 4 Sombras para Ojos, 1 Rímel o Fijador para Cejas, 1 Lápiz Delineador de Labios y 2 Labiales.

.425-5597-3

### 100 SHIMMERS\*



### 103 BARELY PINK



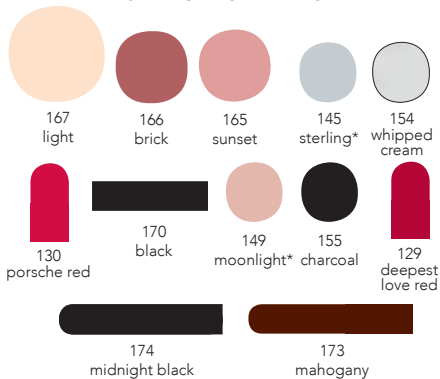
### 106 SUMMER'S KISS



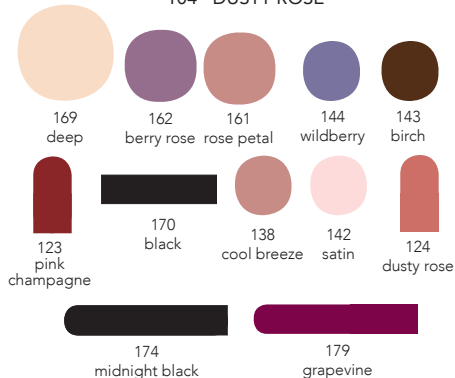
## 101 AUTUMN HUES



## 102 NIGHT ON THE TOWN



## 104 DUSTY ROSE



## 105 PLUM N' BERRY



*"I love the all-in-one Sonya Colour Palettes; not only do they make me look great, but they have positively impacted my business."*

Melissa Furquim Carlos  
Miss Sonya Latin America  
Distributor since June 2004



Melissa is wearing the Dusty Rose Palette.

## Sonya® Skin Care Collection

282

The Sonya® Skin Care Collection kit contains Aloe Purifying Cleanser, Aloe Refreshing Toner, Aloe Nourishing Serum, Aloe Balancing Cream, and Aloe Deep-Cleansing Exfoliator. Indulge in these products, and treat your skin to the luxury it deserves!

*La Colección Sonya® Skin Care contiene Aloe Purifying Cleanser, Aloe Refreshing Toner, Aloe Nourishing Serum, Aloe Balancing Cream y Aloe Deep-Cleansing Exfoliator. ¡Consienta su piel con este proceso de cinco pasos y bríndele el lujo que se merece!*

.599-7895-4



## Sonya® Aloe Purifying Cleanser 277

Aloe Purifying Cleanser will leave your face feeling wonderfully soft, fresh and clean each time you cleanse. For best results, follow with Aloe Refreshing Toner and the other products in the Sonya Skin Care line. 6 fl. oz.

*El limpiador Aloe Purifying Cleanser dejará su cutis maravillosamente suave, fresco y limpio cada vez que lo use. Para mejores resultados, aplíquese Aloe Refreshing Toner y los otros productos de la línea Sonya Skin Care. 6 oz. liq.*

.128-1677-12



## Sonya® Aloe Refreshing Toner 279

Aloe Refreshing Toner with White Tea provides vital moisture to help keep your skin properly hydrated. Apply this alcohol-free toner after cleansing with Aloe Purifying Cleanser. 6 fl. oz..

*El Aloe Refreshing Toner con Té Blanco suministra humedad vital para ayudarle a mantener su cutis adecuadamente hidratado. Aplique esta loción tonificante sin alcohol después de limpiar con Aloe Purifying Cleanser. 6 oz. liq.*

.128-1677-12



## Sonya® Aloe Nourishing Serum 281

Aloe Nourishing Serum with White Tea replenishes your skin's moisture and makes a perfect base for Sonya Aloe Balancing Cream. 4 fl. oz.

*Aloe Nourishing Serum con Té Blanco restaura la humedad natural de su piel y es una base perfecta para la crema Aloe Balancing Cream de la línea Sonya Skin Care. 4 oz. liq.*

.159-2097-1



## Sonya® Aloe Balancing Cream 280

Aloe Balancing Cream contains aloe plus revitalizing extracts and advanced moisturizers. Used with Aloe Nourishing Serum, your skin will feel soft, smooth, and hydrated. 2.5 oz.

*La crema Aloe Balancing Cream contiene sábila, además de extractos revitalizadores y lo más avanzado en humectantes. Al usarse con Aloe Nourishing Serum, su piel se sentirá suave, tersa e hidratada. 2.5 oz.*

.122-1607-12



## Sonya® Aloe Deep-Cleansing Exfoliator 278

Aloe Deep-Cleansing Exfoliator contains aloe and natural jojoba beads to leave your skin feeling soft and smooth. Gentle enough to use twice a week, aloe makes the perfect moisturizing agent while the gentle jojoba beads give your skin that deep-cleansing it deserves. 4 fl. oz.

*Aloe Deep-Cleansing Exfoliator contiene sábila y gránulos de jojoba naturales que dejan su piel suave y tersa. Un exfoliator suficientemente delicado para usarse dos veces a la semana, la sábila es el perfecto agente hidratante, a la vez que los gránulos delicados de jojoba suministran a su piel la limpieza profunda que se merece. 4 oz. liq.*

.096-1257-12



## New! Sonya® Aloe Deep Moisturizing Cream 311

Sonya® Aloe Deep Moisturizing Cream with Pine Bark Extract is the newest addition to the Sonya Skin Care line. Pine Bark Extract combats free radicals to help preserve and strengthen the skin's collagen – one of the best ways to counteract the signs of aging. Let Sonya Aloe Deep Moisturizing Cream help maintain and deliver moisture deep within the outer layers of your skin to restore and preserve your skin's youthful glow, and quench your skin's thirst for moisture like never before! 2.5 oz.

*La crema Aloe Deep Moisturizing de Sonya con extracto de corteza de pino es la última adición a la línea de Sonya® Skin Care. El extracto de corteza de pino combate los radicales libres para ayudar a preservar y mantener el colágeno de la piel, una de las mejores maneras de contrarrestar las señales del envejecimiento. Deje que la crema súper hidratante Aloe Deep Moisturizing de Sonya le ayude a proporcionar y mantener la humedad profunda en las capas externas de la piel. ¡Restaurará y preservará el brillo juvenil de su piel al humectar su cutis como nunca antes! 2.5 oz.*

.133-1747-12



*"The Sonya Skin Care Collection has completely transformed my skin with its rich, natural ingredients, and gentle nourishing formulas. Not only have the products improved the appearance of my skin, but they are also among the best sellers in my business! The best way to experience the benefits of this Collection is to use the products yourself!"*

Jingbai Li  
Miss Sonya North America  
Distributor since June 2008



After using the Sonya Skin Care Collection, Jingbai uses Plum N' Berry Palette with Vanilla Pearl Lip Gloss.

Join Our Family



Just like when Sonya used to 'sneak' into her mother's makeup bag, everyone deserves the opportunity to have access to the highest quality health and beauty products. At Forever, we are proud of the fact that we offer a proven business opportunity that rewards hard work. Forever, as a family, is filled with millions of people just like you, who have taken this opportunity of a lifetime and are making their dreams a reality. ASK NOW how you can start helping others enjoy the health, beauty and wealth they deserve.

*Así como Sonya solía 'revisar' la bolsa de maquillaje de su mamá, todos merecemos la oportunidad de tener acceso a los productos de la más alta calidad para la salud y la belleza. En Forever estamos orgullosos de ofrecer una oportunidad de negocios que remunera su arduo trabajo. Forever, como una familia, está compuesta de millones de personas como usted, quienes se han aprovechado de la oportunidad de una vida y están haciendo sus sueños realidad. PREGÚNTENOS cómo usted puede ayudar a otros a disfrutar de la salud, belleza y riqueza que ellos se merecen.*

*Sonya*<sup>®</sup>  
COLOUR COLLECTION

Simply Beautiful

[www.foreverliving.com](http://www.foreverliving.com)

FOREVER  
LIVING  PRODUCTS

7501 East McCormick Parkway  
Scottsdale, AZ 85258 USA  
[www.foreverliving.com](http://www.foreverliving.com)

ITEM #10052  
H90