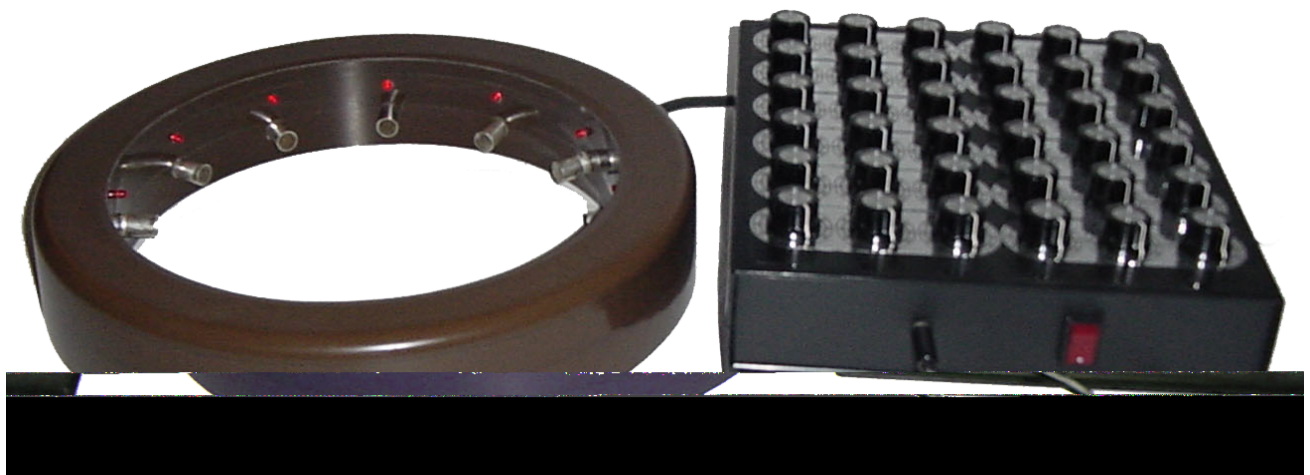


SIMPLY SUCCESS

... AT THE FLIP OF A SWITCH!



POWER TECHNOLOGY
FOR
SELF-IMPROVEMENT,
FITNESS, SPORTS,
TREND MANAGEMENT, AND
MIND CONTROL

HSCIT, P.O. Box 1298, WOODSTOCK, GA 30188

(770) 924 0223

E-Mail: karl@welz.net --- Web Page: <http://www.hscti.com>

The Welz Chi Generators®, Orgone Radionics™ Devices and Power Radionics™



JU 99 CE, JU 99-10, TF 99 CE,
SPP 99 CE, GPP 99 CE



RAD 2400 HD



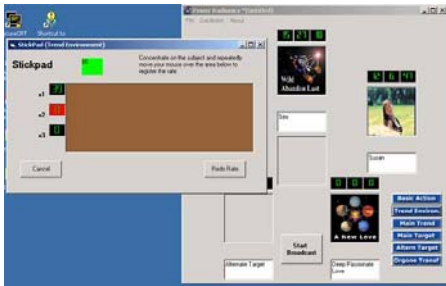
AO 2000



LPOG 2400 HD/DL



RAD 2000



PR 2000 CD Power Radionics™ Program



PBT 2400



EPM 2400



RAD 5



ATGS 3000

Copyright © by Karl Welz,
Woodstock, GA
All Rights Reserved
Orgone Generator®, Chi
Generator®, EPG™,
Orgonite®, Orgonit™, and
Welz Chi Generator®, etc.
are HSCTI-Trademarks

The shortest distance between two points is a structural link™

The New Welz Chi Generator®
Is more than a generator of life force
It is a way of life !!!
It is exciting new technology.
In fact, it is exclusively designed to make
Your deepest desires
become tangible reality

WELCOME TO this exciting new technology
that can mean for you the difference
between average results and
TOTAL SUCCESS !!!

Here you can find **the ultimate perfection** of a new technology. This certainly **is exciting news for you**, provided that you have this deep down desire for positive permanent change and ultimate success.

In fact, you can safely call this amazing new technology **the ultimate unfair advantage!** Unfair, because time-consuming practices, grueling exercises, even spiritual training, become secondary as compared to the ease with which you can set up this extraordinary equipment **to help you succeed in every respect.**

This new technology **is exceptional**, because **it opens up a whole new world of** subtle methods that will leave you entranced, enlightened, and empowered. You will actually be equipped with **what is certainly the most advanced technology of power performance and effective self-help.**

For you, this can well be the first time that learning about a technology will not only be useful, it will be used. **It will be a natural step** in the right direction of the success that you were striving to achieve in the past. In the following, you will find an outstanding new method to boost your performance to the max. It is here that you can probe the deepest **in your journey to the top.** We are going to lay out this exciting new technology for you so that you can gain immediate evidence right at the beginning, from where you will continue step by step to an increasingly deeper grasp of its far reaching new applications!

Naturally, here you can find **an easy and very effective way** to help you improve all your prospects for the future. It is specifically designed **to provide you with powerful means to enhance** your performance in all areas of your life, especially those that you feel need to be strengthened. Whatever the line of your work or field of endeavor is, be it **relationships, business, politics, high performance sports, education, volunteering, spiritual matters, or anything else**, the highly effective equipment from HSCTI is designed for a great many uses, while helping you **achieve results** whenever you use it appropriately.

Important: As you continue to find out more about the great potential of this extraordinary new technology, you will be introduced at times to words and techniques that may or may not cause subconscious fears and doubts. One of these words is "magic". Actually, what most people call "magic" is nothing but action at a distance that you can achieve with the help of structural links and life force, i.e., it is functionally identical with radionics. You will learn more about structural links later! It is a well-known fact that the same people who used such methods extensively towards their own selfish ends originally implanted these fears and doubts. Ignorance was always the safest method to dominate large parts of the population! So we decided to use the word "magic" and other similar words whenever they are the best choice to accurately describe what is happening when you work to achieve positive permanent solutions.

Life Force makes it all possible!

This exciting test most certainly will be a surprise for you!

Before you are going to routinely use of this amazing new technology **to achieve secured success**, you can carry out this experiment. This will certainly provide you with the evidence **that you wanted** and it will prove to you that **Life Force Bridges any Distance!**

This experiment and its discussion of it will reveal to you...

- **The basic principles of a new and far-reaching Life Force Technology**
- **A deeper understanding of the working of Radionics**
- **The importance of Life Force and Low Frequencies in Competitive Sports, Fitness Training, and Body Building**
- **A comprehensive view of Methods of Self-Improvement and Techniques of Motivation for positive permanent change, and**
- **A general grasp of ESP, psychic skills, shamanism, mind control, and other methods of Action at a Distance (some call it Magic)!**

The Transfer Test



1. Put this catalog on a flat surface, with this page open. It should be a minimum of 2 ft (60 cm) away from your body or any other larger living organism.
2. Now, hold the center of the palm of either hand approximately one inch (2 – 3 cm) above the printout of the diagram.

Be sure that your hand is relaxed: open, and not stretched out!

Most people will be surprised to feel something almost immediately: You feel either a slight tingling in your hand, a gentle cool breeze, or, as is the case with most people, an agreeable sensation of warmth in the center of your palm that can spread out from the palm...and...

Yes!!! You have just felt life force, perhaps for the first time in your life. As you know by now, life force is the subtle energy (some call it "psychic power") that is used in all methods of action at a distance, such as spiritual-religious work and miracles, treasure mapping, self-motivation, shamanic practice or psychic work.

You can feel life force emanating from the printed diagram, because an identical diagram, which serves

as a structural link, is in front of one of the Welz Chi Generators® in our laboratories.

This means that you can use technology to harness and direct Life Force.

You can get still better results when you call us at (770) 924 0223 (USA) for an individualized hook-up or e-mail karl@welz.net for further instructions to test energy transfer at any distance.

The Proof

This extraordinary test proves to you first hand that which sensitive and powerful persons of all times (among them tai chi masters, reiki masters, yogis, shamans, conjurers, magicians, and priests performing spiritual work) knew all along: namely that life force (chi, prana, mana, etc... every culture and language has its own name for the same energy) transfers at any distance. Moreover, it does so without loss of energy. All that is needed is the right structural link (some professionals prefer to call it "psychic link") to establish contact. This fact makes their work possible, even easy! In fact, it is so easy that everybody is now capable of working the magic of professional psychics, shamans, spiritual workers, etc.

This has been one of the reasons why many of these professionals decided to guard their powerful secrets like precious gems, making them available only to very few hand picked people. Under no circumstances did they want to lose their lucrative sources of income.

The Conclusion

This experiment revealed to you one of the most guarded secrets of all ages, namely the transfer of life force ("magical energy" or "psychic energy") at any distance. More importantly: you have just found out that these secrets are technology, yours to use. You have just experienced that the effects of any type of shamanism, magic, or spiritual work, such as changing your life for the better, can be achieved by now easily with the help of our powerful technology.

**It is powerful technology in your hands ...
... For lasting success and for positive permanent change !!!**

How it Works: Methods of Action at a Distance and their Common Functioning Principles (CFP)

*Magic is action that makes use of structural links and life force
(Karl Hans Welz, "Magic of the Future")*

The three basic factors of any successful action at a distance such as radionics and magic are:

- **The Trend Link (representing the planned effect),**
- **The Target-Link (representing the target), and**
- **Life Force!**

Any operation at a distance that neglects any one of these three basic factors is doomed to fail, regardless of intent, traditionalist connection, spiritual training, and what not! This is the reason why some methods do not work, even if the would-be practitioner followed all instructions meticulously.

The Trend-Link

Trend-Links are radionic settings ("rates"), precision frequencies, symbols, sigils, frequency patterns, symbolic objects, devices, magical incenses, oils, herbs, or any other structural representations. They have in common that they establish a connection with a desired effect, or with the desired solution of a challenge. Sometimes such trend-links can refer to energies of a more metaphysical classification such as the effects ascribed to planets, elements, etc., all of which represent desired change, or desired effects. Being representatives of desires, the trend-links are sometimes viewed as modulators of life force (orgone, chi), so that the projected life force field gives inclination to a specific action. The Filters that we offer are typical Trend-Links.

*Many traditional esoteric schools teach the preparation of trend-links ("utensils") of a very complex nature requiring much concentration and detailed work, especially when the problem to solve is a complicated one. One of the purposes of this practice is the generation of a thought-form that is attached to the object. Naturally, using the Welz Chi Generator® or one of our Orgone Radionics™ Devices (the RAD series) and/or the Power Radionics™ Program optimizes the effect of the trend link, generates the correct thought form and supplies it with life force. Such a Chi-energy-boosted thought form, of course, is a living abstraction that follows subtle cybernetics towards achieving a goal, or solution. **Therefore, powering up trends with the Welz Chi Generator® makes the more***

Important! Both, the target-link and the trend-link are structural representations of either trends (desired change) or targets of your action. Actually, when you focus mentally on a person, location, desired effect, etc., your brain establishes a structural link. Naturally, such focusing can be a real challenge for you: namely that you cannot keep your focus with one and the same thing at all times. This is so, because "moving around" is one of the characteristics of our brain. Long time ago, therefore, practitioners developed methods to "freeze" these structural links. Objects that are prepared with the intent to connect to a specific target, or trend, are such links. Of recent, the radionics device with its "abstract" settings ("rates") turned out to be an ideal tool for this purpose. More traditional and very effective tools are esoteric and archetypal symbols that, like the setting of radionics rates, have been made with a special intent in mind. Because of the processes of abstraction and focusing that are involved, we label these symbols, radionic rates and objects "equivalent structural links" as compared to the more obvious "near-identical" or "similar structural links".

traditional methods of involved crafting of complicated trend links unnecessary.

The Target-Link

The Target-Link (often also called "psychic link") is an object, symbol, radionic setting, etc., that connects with the target of your operation. This target can be another person or you. It can also be an entity consisting of several persons such as a business. Naturally, the target-link causes a direct flow of life force (with an attached effect) to the target that it represents. The diagram that you find on the test for life force transfer is such a target-link. It connects with a Welz Chi Generator® in our laboratories. Some practitioners use hair, clothing, photos, etc., of persons that they target. A radionic setting ("rate") that you establish while focusing on the target of your operation is a "frozen abstraction", which serves as a very effective target link that lasts as long as the setting remains.

The Importance of Life Force (Chi, prana, orgone, mana, Od, animal magnetism, etc.)

The characteristics and function of structural links are easy to understand. For life force, distance is result of structural differences. To explain the mechanisms that cause life force to join a target with a trend, especially with structural links that are abstractions such as the settings of the radionics device or magical symbols, requires knowledge of the characteristics of life force. Such understanding is still more important for an understanding of thought forms, how they develop and why they can continue to activate a previously set trend in a target (person) after the original operation (radionics or other action at a distance) has been discontinued.

Traditional operators knew about this (with the exception of radionics) **for thousands of years** and they based their work on such knowledge. They knew well that the operations that they powered with life force yielded much better results. **Their knowledge resulted from their practical experience.**

On the other hand, the radionics device of the traditional kind did not bring such an effect at times, mostly because of a lack of the necessary life force. This is so, because the average radionics practitioner is unaware of the importance of life force for his or her success. Typically, such a traditional radionics device remains turned on until the effect materializes.

With the invention of the Welz Chi Generator® and the introduction of life force boosted radionics (Power Radionics™), this situation changed immediately and radically, of course! **A radionics operator who works with a Power-Radionics™ device** (life force boosted radionics device) **can now operate like a traditional practitioner, shaman or magician, and he can do this with the unsurpassed flexibility of the radionics device:** Set the radionics device (or the radionics program) and run it for an hour or two. Then turn the device off and wait for the

success of the operation. You can repeat several times in intervals of one or more days. With the Welz Chi Generator®, you can naturally turn every radionics device into a Power Radionics™ device and you can turn any radionics program into a Power Radionics Program!

In the following, we will explain to you in simple terms how radionics works so that you know why **the technology of Power Radionics™** (life force boosted radionics) **is way ahead of traditional radionics.**

Of life force, we know that

- (1) It flows freely without significant loss of energy between identical or equivalent structures, and
- (2) It follows the principle of negative entropy, i.e., from the weaker potential to the stronger one until the stronger potential is saturated.

The second characteristic of life force can establish linkage if the connection is not exactly identical, even to the point of being pure abstractions (such as radionics settings, or "rates", symbols, mantras, thoughts, or objects) that were established with the human brain while focusing on trend or target. Life force automatically searches out the final target for which such an abstraction has been established originally with help of the human brain. This process is similar to heat traveling the path of least resistance ("preferring," so to say, heat conducting materials) when following the law of entropy from higher potential to lower potential until a balance (equal potential) between the two is reached. Therefore settings of the radionics device compare to ducts in a heating system.

On the typical radionics device, then, one link connects with the trend while the other link connects with the target. Since both links are in the same place (the device), a connection exists between trend and target. With this connection between trend and target established, the trend energy will define actions of the target person. With additional mental targeting (intent), i.e., the use of trend energies of a more complex nature, such a connection can take the aspect of a thought form. This means that, using abstractions and corresponding settings, you can achieve permanence after the original setup of the radionics device is discontinued. The same principle certainly is also valid for magic and any other action at a distance!

Naturally, you need sufficient life force, ideally from a Welz Chi Generator®, to power up such a thought form and to keep it alive. Repeating the operation will then re-charge it. This procedure is certainly more efficient than leaving the traditional radionics device (which can easily be outperformed by people who know how to harness life force) turned on until the goal is achieved. The Welz Chi Generator® that is built into the Power Radionics™ device and/or connected with the Power Radionics™ Program assures rapid results and the development of powerful thought forms. While middle of the line devices are great for personal use, the HD devices assure massive supply of life force for multiple radionics operations as well as for complex and difficult situations.

Throughout history, humans have used life force for many purposes. This use of life force, or chi energy, was always the result of practical experience. Being one of the first technologies of humankind, it naturally became part of humans' religious belief systems, very similar to the use of fire, the making of metals, and natural phenomena. Therefore, most of the time the practical application of life force was linked closely to the religious creed of the culture where it was used. Moreover, whenever an application of life force was successful, such success was considered to be proof of the religious belief system of the practitioner.

By now it is obvious that the natural characteristics of life force make radionics possible. For persons who are unaware of the basic functions of life force, i.e., negative entropy and structural transfer, it appears to be a "medium" that is "modulated" by trend energies which it then "carries" to the target. That assumption is as primitive as the assumption of some practitioners who kill chicken in order to "feed" their spirit servants with life force.

Experienced traditional practitioners of all times in history knew very well this simple fact: There is no action at a distance, no magic, without life force! Life Force carries the secret of positive permanent change and mind control at a distance. Therefore, Life Force is the fuel of all action at a distance, including the comparably recent radionics!

The challenge that traditional practitioners faced was to have access to large amounts of life force (many of them called it "psychic power"), to do effective work. Their methods to generate life force have been as varied as the cultures and religions into which they were born. Some of the more advanced practitioners always knew how to draw life energy from the universe around them, while the majority of practitioners used an array of other methods, such as generating life force in one's own body (tai chi), generating it by means of strong emotions, and by having groups dance or walk in circles. Some traditions such as Voodoo and Santeria are still practicing animal sacrifice to cause strong releases of life force.

It is obvious by now that the capability to generate massive amounts of life force makes action at a distance, including radionics, easy for any person! This certainly has been one of the reasons, why many shamans, priests, and other professionals of the past and of the present decided to guard their powerful secrets like precious gems! Under no circumstances did they want to lose their very lucrative incomes.

Structural Links and Life Force (to sum it all up)

The preceding theory of life force and action at a distance is solely based on the proven characteristics of structural linkage and negative entropy of life force. Therefore it makes certainly more sense when it comes to explaining the amazing results of shamanistic work, magic, radionics and other methods often referred to as "spiritual" than practically all explanations of our days that use unproven concepts such as non-measurable "frequencies", various "ethers", "higher planes", specific assumed "morphogenetic fields", anthropomorphic "spirits" and the like. My principal approach in establishing any mapping, or theory, is to **Keep it simple!**

Give this perhaps "unorthodox" theory that is naturally based on experiments and functional thinking a chance and you will soon notice that many phenomena that were "unexplainable" up to now will be explained in quite easy terms!

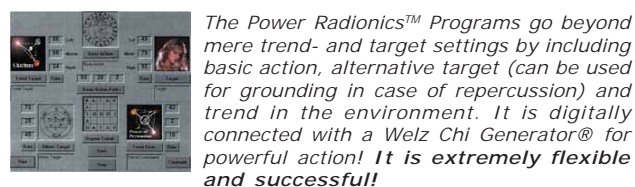
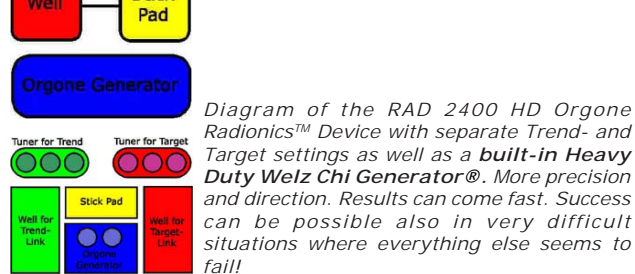
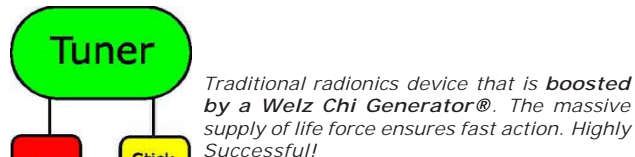
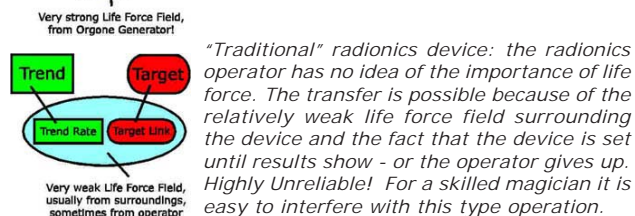
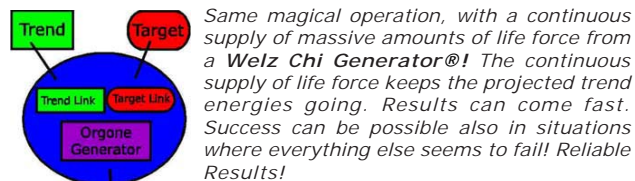
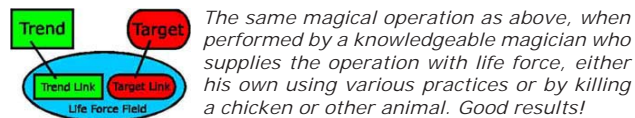
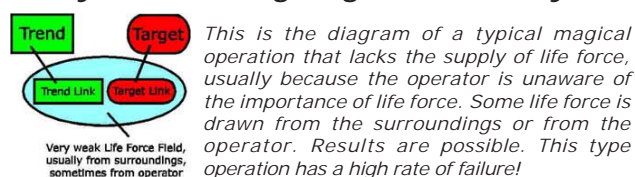
Use this theory when working with radionics, magic, or any other method such as motivational techniques and self-improvement, and you will notice an almost immediate, often unexpected, increase of flexibility, capability and action at a distance.

Magic and Radionics: Two different approaches, same Common Functioning Principle (CFP)!

In the preceding pages we made it clear that practically all effective methods to act at a distance, including shamanic work, magic and radionics have the same CFP! Therefore, you can view the diagrams below in the light of these methods. They are certainly valid for all of them.

In fact, some experts in radionics refer to the radionics device as the "Voodoo Doll" of the modern age. They naturally are more in line with an exact understanding of the processes involved in radionics than they may originally have suspected - or wished.

Study the following diagrams carefully!



Magic and Radionics are perfectly interchangeable!

A radionics device establishes non-fleeting and stable structural links (contrary to the brain, which has the characteristic of "moving around") and so do magical objects, or sigils!

Therefore, a radionics device can also be called a "universal magical sigil". It is a technological device that establishes structural links and holds these structures longer than our brain can do. The advantage of the radionics device over the magical or any other symbol is its infinite flexibility! **The seasoned magician always prefers a combination of the two: the magical sigil to make use of energies that people have used successfully over and over again and the radionics device for the purpose of fine-tuning these energies and adjusting them to the specific purpose of the operation. This way they can tie into well-established energy patterns (the magical symbol), which they modify for a specific purpose with the radionics device. The Power Radionics™ Program combines the two in a most effective way!**

The most important factor required for **the success of a radionics operation** is not the specific make-up of the device that you use to establish equivalent structural links; **it is the amount of life force** used for the operation and the sophistication and adaptability of the envisioned trend energies, ideally as an **"independently acting" thought form**. That is the reason why the RAD 2400 HD is ideal for your magical work (see the diagrams on the preceding page).

It is obvious by now that the radionics device is the ideal tool to establish equivalent structural links that connect to any desired target, trend, or to both.

The advantage of the radionics device over the methods of traditional magic, such as sigils, oils, dolls, etc., is the obvious fact of its incredible flexibility. Sigils, oils, etc., are designed for one thing and one thing only. The radionics device naturally can be set up for any purpose. **IT IS UNIVERSAL !!!**

Magic is action that uses life force and structural links. Seen under this aspect, radionics is magic that uses technological devices (including computer programs) as universal structural links, which you can tune to any desired trend and/or target.

You Can Get what You Want

Before you begin to use the Welz Chi Generator® to help you achieve decisive positive permanent solutions, you can examine thoroughly your innermost desires and ask yourself a few key questions:

- 1. Do other people envy you? Or do you envy others?
- 2. Do other people want to be like you? Or do you wish you were living other peoples' lives?
- 3. Are others in awe of you? Do they puzzle at your meteoric rise to the top as much as they wonder about your success, accomplishment and amazingly good fortune? Or is it perhaps the other way around?

Here is a list of some of the good things that you probably want:

- The things you want to own
- The money you want to acquire
- The things you like to achieve
- The exotic places you want to see
- The abilities you like to have
- Good fortune at all times
- The love you like to receive
- Abundance on all levels
- Achieve and maintain balance, harmony and peace
- And much, much more...

Now, most certainly you know that **it is your Power that carries your decision, obeys your command.** This Power is a manifestation of the life force that you have available. Wise people in the Far East called this life force, or power, Chi and they developed many techniques of **self-improvement** from this knowledge such as Tai Chi and Chi Gong. Modern Western terms for life force are orgone, animal magnetism, Od, Solar ether, and others.

To understand the advantage that this Power, i.e., life force, can give you, imagine the following: Bring a native in from a remote jungle to a city. The electricity will not work for him until he realizes that this button turns on that light and that switch turns on this radio. Naturally, for him the effects of electricity are "magic". His friends who never learned how to flip a switch have no access to this magic whatsoever.

As you know by now, Your Power is dependent on your available Life Force. Using Chi Generators®, you can have much more life force available. Consequently, by now you are able to control it where and when you want to do so. Obviously, to have more life force available means that you have more Power and consequently you have more control of your reality than others around you.

Now... imagine that you can project a large amount of continuous life force to any one or more of the areas in your life or goals that you like to improve and strengthen. **Naturally, with added life force you significantly reduce the time and the effort it would normally take and, of course, you can have much more control over these areas. This is the Power to control and to manifest your reality with overwhelming success!**

You want to know now how this all is possible. You find the answer when you think of people whom you know. Some of them are radiating energy wherever they are and it is obvious that they are successful in just about everything they initiate. Others toil, their noses to the grindstone, to get the bare necessities for life. The difference between these two extremes is in the ability to generate and use life force. Usually generated subconsciously, **life force and the stamina coming with**

With our equipment, i.e., the Welz Chi Generators®, we have conducted double blind experiments. We have demonstrated that equivalent structural links (abstractions such as arbitrarily set rates in a radionics device, or archetypal symbols) allow transfer of life force as effectively as near-identical links do. On the other hand, traditional practitioners could have told us the same thing all along thousands of years ago! All their work and experience have been based on the principle of life force transfer at any distance. They had the experience; therefore, they needed no experimental proof.

it can be decisive when it comes to achieving success.

Until now, the knowledge of how to generate life force and how to consciously harness it for success was kept from the common people. Every shepherd's intent was to have as large a flock of sheep as possible.

Life Force Technology - what it can do for you

*By now you know that, with the use of the **life force technology (orgone technology)**, you can open the door to a new, successful and happy life. A bit of training and practice will be needed, of course. Naturally, **within a relatively short time, within just a couple of weeks or less, you can be capable of achieving** the success of which you perhaps never have dared to dream yet. In addition to that, you can experience positive effects such as physical stamina, energy management, and relaxation, **right from the beginning**. Life can be truly successful and enjoying **as long as you seize the opportunities** it offers. Now certainly is the time to start something that can be the greatest adventure in your successful life **with the technology of orgone boosted magic and radionics**.*

*The Welz Chi Generator® comes by itself (the **JU 99 CE, the Performer 2400, and the LPOG series**) or as a combination unit with a radionics device (the **RAD series and the ATGS 3000**). By itself, you can use it as a mind machine and as a power source for operations at a distance that include special attachments such as filters, Radionics Programs, or your individual set-ups. Self improvement, shamanic work, ceremonial magic, talismanic magic and rune magic are examples of such setups.*

Among other things, the Welz Chi Generators® are uniquely designed for:

- **Enhancement** — Greatly improve and enhance your life.
- **Trend Management** — Powerful help for positive permanent change.
- **Instant Control** — Take instant control of your life — in areas of desired change and improvement.
- **Peak Performance** — Attain peak performance in work, studies, and, of course, in sports. Build confidence and reach top level performance in many areas of your life. In Sports, you can use the mind machine option for Top Performance Enhancement that is legal and Defies Detection.
- **Balance and Relaxation** — Experience stress relief and increase relaxation.

Yes !!!... With the new Welz Chi Generator® or Power Radionics™ Device, you can have now a tool that gives you the cutting edge on your path to a happy, meaningful, and fulfilled life in abundance and to gain a significant advantage in your personal matters, business dealings, prosperity, sport achievements, relationships, and sex!.

Therefore the Welz Chi Generator® is certainly the most important technological advance in mind machine and life force technology in the past 40 years and

definitely the greatest yet for self-help, mind-control, and, of course, for powerful work to naturally improve your life and the life of others! You can use this equipment to help yourself achieve permanent desirable solutions in your most important situations.

It's Easy and Practical !!!

*With the Welz Chi Generator® or the Power Radionics™ Device, the practical harnessing of life force for your overall success is extremely easy! It is the same process that happens when gifted humans use their innate psychic powers or when they generate and harness life force by other means. There is a difference, of course: **With the new Welz Chi Generator®, even an untrained person can get the same results now that otherwise only highly trained psychics, shamans, or magicians can get.** In fact, with the new Welz Chi Generator®, you have now a decisive advantage over any person, who does not own and operate this technology. This is so,*

1. because the Welz Chi Generator® generates life force continuously and
2. because the Welz Chi Generator® has a much stronger output of life force than most magicians and shamans can ever produce, even when working in groups.

In fact, the technology from HSCTI requires not more training than what it takes to drive a car. When you decide to use the Welz Chi Generator to help you achieve a better life, you need no involved training, no creative visualization, no pep talks to yourself, no hypnosis, no self-programming techniques, and no motivational seminars. All it takes to succeed is the capability to flip a switch and the willingness and open mind to utilize new technology when improving your life in every aspect.

In fact, acquiring the Welz Chi Generator/s® is definitely the best investment by far that anyone can make in a lifetime as Welz Chi Generators® already produce spectacular results, as experienced by many users of these amazing devices worldwide!

The Universal Manual that you will receive with your Equipment has easy-to-follow, step by step instructions that will lead you from very simple applications to increasingly complex uses of this extraordinary equipment. Above all, ...

It's fun, it's exciting, and you certainly can be laid back and relax while you await assured success!!!

*With simple attachments to the Welz Chi Generator® such as the various filter packs (the Alphabet of Desire, Sex Pack and others) **you can now harness life force much easier for any purpose you desire.** The Welz Chi Generator will then project this life force boosted trend to any target of your choosing and it will do so continuously. That's why the Welz Chi Generator® is the ideal tool for you to increase your **personal power, prosperity, performance, and success !!!***

The Welz Chi Generator® when used properly, can be your powerful weapon that you can aim at any

It's fun, it's exciting, and you certainly can be laid back and relax while you await assured success!!!

person of your choosing, without them having the slightest idea of why they act in some specific way – which will be **the way You Want It To Happen !!!** Therefore, the Welz Chi Generator can be your decisive tool to help **you make all your dreams come true.**

It is a power generator, a mind machine and a creator of favorable trends in one! **Most importantly, it works at any distance!!!**

Among the many uses of this exciting technology:

Self Improvement:

- Energy and vitality - energize yourself
- Relaxation and stress reduction
- Build confidence
- Help develop skills
- Added energy for workouts
- Help weight control
- Enhance supplements

Your interactions with others:

- Influence others, with or without their knowledge
- Energize others
- Influence the outcome of challenging situations
- Charge talismans
- Energize your action at a distance (or magick)

Your environment:

- Energize drinking water, juices and food
- Energize plants - house plants or garden
- Energize cosmetics and supplements
- Provide your pets with energy and vitality

Above all - bring this extra magick into your life!

In this catalog, you find information about:

1. The Welz Chi Generators® (Orgone Generators®)

To energize yourself and to add power to all actions at a distance, such as in combination with a radionics program or with an older-type radionics device (any device without built-in Welz Chi Generator®). **All radionics devices from HSCTI have built-in generators of life energy (Welz Chi Generators®)**

Welz Chi Generators®: The JU 99 CE = Junior 99 Chi Energizer, the LPOG 2400 DL = Low Pulse Orgone Generator™ deLuxe, the LPOG 2400 HD = Heavy Duty Orgone Generator®, the Performer 2400 = Heavy Duty Specialty Device for Sports, Fitness and Bodybuilding, the AO 2000 Water Optimizer.

Note: do not get fooled by marketers who are selling mere orgone accumulating devices that they falsely label "orgone generators".

2. The Power Radionics™ Devices

The purpose of a Radionics Device is to establish structural links. The purpose of a Welz Chi Generator® (orgone generator®) is the generating of life force (Chi energy or orgone). Naturally, all radionics devices from HSCTI have a built-in Welz Chi Generator™ (orgone generator™) to provide the power necessary for effective action at a distance! **The ATGS 3000 and the RAD 5** are donut-shaped Welz Chi Generators®. Their output pipes point to the center. Their frequency settings are radionics settings. Other Power Radionics™ Devices: The RAD 2000 - 3-Dial Basic

Orgone Radionic™ Device and the RAD 2400 HD - Heavy Duty Power Radionics™ Device.

3. The Power Radionics™ Programs

As is the case with the Radionics Device, the purpose of the Radionics Program is to establish structural links. It is a Power Radionics™ Program, because you can connect it structurally with a Welz Chi Generator®, which adds power to your radionics operation.

Power Radionics™ Programs: The RI 2400 CD and the PR 2000 CD.

4. Accessories to the Welz Chi Generators® and Power Radionics™ Devices

The Power Boosters, the Transfer Couples, the Filter Packs and the EPM 2400 Exterior Precision Module.

The Welz Chi Generator® is exciting new technology that you can use to get an assured technological edge in your personal matters, business dealings, prosperity, sports performance, relationships, and sex! If you feel that you are just falling short of everything, the Chi Generator® can give you the assistance that you need to have your dreams come true. Here we are presenting you the various devices and kits of the ultimate in life force technology, power radionics, and mind machine technology, and how you can use them to enhance your life.

Choose the Equipment that's Right for You !

After you look at all the options in this catalog, we suggest that you consider a few key questions before purchasing equipment.

Where budget is an issue, to strike a balance between price and desired sophistication of your equipment is the thing to do.

The more basic units and combinations of units provide you with excellent value. They don't always provide the sophistication and special applications some persons need. These modestly priced units can provide you with great solutions for years. All of them you can integrate into increasingly sophisticated workstations.

Middle of the line units provide a wider variety, more power, and upgraded features. For mainly personal use, we recommend a middle of the line unit such as the RAD 2000 Power Radionics™ Device or the LPOG 2400 DL! Basic and middle of the line units and kits are a great choice for persons who use this extraordinary equipment in the main for self-improvement and for management of their desires.

For added impact upon others or to exercise some form of mind management (or mind control) upon them, and for work with superior effectiveness, you should choose a unit that's top of the line. In fact, the top of the line units (such as the RAD 2400HD, RAD5 and ATGS 3000) boast effectiveness, excellent variety, greatly increased power, and depth of experience.

For top performance in sports, fitness and bodybuilding, the Performer 2400 is designed to provide this extra boost of energy needed to reach the top.

Catalog of Life Force Technology

1. Welz Chi Generators® (Orgone Generators®)

The JU 99 CE = Junior 99 Chi Eneraizer™

Small Size, ca. 5 x 2 1/4 x 1 in.

The JU 99 is a bare-bones Welz Chi Generator® (orgone generator®) for individual use that fits every budget.

This extraordinary device contains all the essential parts of the larger Welz Chi Generators®. Its excellent qualities make it a powerful utensil for all whose budget does not allow them yet to acquire a larger, stronger, and more versatile Welz Chi Generator®, who are very serious about bringing the magic of success into their lives and who are ready to work on decisive changes towards prosperity, satisfying relationships, self-confidence, peace of mind and happiness.

For the entry level, the JU 99 CE is excellent for basic energy and relaxation work and to get acquainted with life force technologies. It is convenient and easy to use for any person, and it can be the most important utensil in every household.

You can more than triple its output and enhance energy transfer with the new Power Booster with Transfer Disk (PBT 2400). For energy transfer, use the Transfer Couple TD 99. This way, you can receive the energy without loss, whether you are just a few blocks away from your home or half around the globe!

In addition to that, any radionics device that you put into the life force field of a JU 99 CE or any other Welz Chi Generator® will be more effective. It becomes then a Power Radionics™ device that is boosted with life force. You can use it continuously, day and night, 7 - 24, when using the AC - DC - adapter. No dependence on expensive 9 Volt batteries! Battery option available, if required.

Silver tubing for output: Silver is a favorite of all professionals, when it comes to energizing the body.

7.83 Hz Frequency Setting: The "Schumann Resonance", or Earth Frequency, is a favorite setting for universal purpose: According to brain wave experts, this frequency has additional multiple advantages: overcoming jet lag, counteracting mind control, easier learning, precision, and more.

Whatever your intentions among its many potential uses, a few that are most important for you or all of them, the JU 99 it is designed to fit every budget, while providing this extra strength to make a decisive difference.

About copy cats and parasites

The JU 99 costs a couple of dollars more per unit than the cheapest copycat devices on the market today. This was necessary, because the JU 99 comes with our highly effective formula of the new Super Orgonite® and with silver tubing as energy output. Therefore, the JU 99 CE is multiple strength of anything in this price category that comes from copy cats of our technology, who did not quite understand the actual function of orgonite®, of negative entropy, etc.

Specialty Devices of the same series:



These devices are the same design as the JU 99 CE, with other frequency settings

The TF 99 CE = Top Fitness 99 Chi Energizer™, 20 Hz, for fitness training, weight loss and body sculpting

The JU 99.10 - a 10 Hz "Junior" - for general purpose

The SPP 99 CE - Sports Power Performance Chi Energizer™ - 25 Hz, for this extra energy advantage in sports performance

The GPP 99 CE - Golf Power Performance Chi Energizer™ - for precision in any sports where it is needed, such as golf, target shooting, etc.

The LPOG 2400 DL = Low Pulse Orgone Generator® deLuxe

Middle of the Line Welz Chi Generator®, beamer plate, silver tubing output, transfer disk, built-in voltage regulator, ready to use. The LPOG 2400 DL has 6 low frequencies plus the option of continuous settings.

Theta 3.5 Hz - for Super Learning, especially of Languages

Theta 6.3 Hz - for Super Learning and to Boost Memory

Alpha 7.83 Hz - Earth Resonance! For Invention, Creativity

Alpha 7.0 Hz - to enhance ESP (Extra Sensory Projection)

Alpha 10.0 Hz - for Centering, also and a great general purpose frequency

Beta 14.1 Hz - Efficiency in daily activities, mental and physical energy

Continuous Settings, approx. 0.5 - 900 Hz



Low Frequencies, Mind Machines, and the LPOG 2400

To appreciate the special characteristics of the LPOG 2400 DL as well as the other devices with the option of precise low frequencies (the LPOG 2400 and RAD 2400 series as well as the EPM 2400 and Performer 2400), it is good that you get acquainted with low frequency technology. In fact, the most important method of effective self-improvement prior to the invention of the Welz Chi Generator® resulted from new knowledge of the working of the human brain. It has been well established that every thought, feeling, sensation, and level of awareness has a corresponding brain wave pattern, or frequency. Consequently, you can determine the level of awareness that you want to harness for your success by controlling your brain waves. We know of Alpha, Beta, Theta, and Delta brain waves, all in the low frequency range from approximately 1 Hz to 30 Hz (cycles per second). Gamma frequencies are above 30 Hz.

This method of controlling brain waves with low frequency input is not new at all! In the 1930's researchers found that repetitive light and/or sound stimulation caused brain waves to adjust to the same frequency. For decades now, some "new age gurus" and other cult leaders made extensive use of repetitive sound pulses, often of the inaudible and subliminal kind. This helps them to make their captive audiences more receptive to their preaching. Much earlier than that, as far back in time as the very dawn of humankind, shamans used drumming (repetitive beats of low frequency) to put their audiences into altered states where they had experiences that they would not have

in their normal state of daily activities. In our times, this type of pulse, or "beat" is used in many events where the capturing of audiences and the temporary control of their habits and minds is considered to be important, such as in fashion shows, exercise machine advertising, TV commercials, military training, church meetings, and infomercial pitches to the public, to name just a few.

You can find a variety of good Light-Sound (LS) devices on the market today. A LS-device typically stimulates the brain indirectly with light flashes through goggles and sound stimuli (beats) through earphones. These stimuli will cause the brain to adjust to the frequency of the flashes and sounds and consequently generate the corresponding level of awareness. All LS-devices have a serious flaw: They depend on earphones and goggles to be effective. In other words: if you want to access a specific level of awareness such as charismatic appearance, calm, or creativity, you need to get the stimuli through earphones and goggles.

It is obvious that you cannot wear these LS-devices when you really need them! Just imagine appearing on a date, an important business meeting, or a sports event with an LS-contraption on your head! And you cannot do creative writing, or art, either while using an LS-device on your head. You need to wait until you can take it off your head, and then your brain waves most certainly will adjust back to their usual state.

That's exactly where an LPOG 2400 DL makes a big difference! By now it is well-established that the technology of the Welz Chi Generator® is far superior over the conventional type light-sound mind machines. The reasons are obvious: You can set up The Welz Chi Generator® to emit Low Pulse Orgone in the exact frequency of brain waves: Alpha, Beta, Theta, or Delta. When you are in a field of LPO (Low Pulse Orgone, or Chi), your brain can adjust to its frequency almost instantly and with ease. This is so, because the detour over sensory perceptions or questionable electric mini-shocks (as in a couple of more recent devices) is no longer necessary. Life force in brain wave frequencies means a more effective impact and therefore faster results. You achieve the corresponding states of mind almost in an instant !!! The most striking advantage of our LPO technology over conventional type mind machines is the fact that you can project LPO (Low Pulse Orgone) at any distance. Simply use a structural link such as the TC 99 Transfer Couple or the PBT 2400 Power Booster with Transfer Disk, put it into your pocket, set your generator at the desired pulse speed, and go to a business meeting, on a date, to the gym, to a sports competition, or anywhere else. In fact, nobody will notice your invisible helper. That's all! You can relax or go about your usual business at any place.

There is certainly no need for you to have those cumbersome and ridiculous goggles, earphones, or other contraptions, on your head ever again!

Use archetypal or astrology-based filters, the RI 2400 CD Radionics Program or the PR 2000 CD Power Radionics Program to power up any activity you desire !!!

Naturally, any radionics device that you put into the life force field of an LPOG 2400 DL or any other Welz Chi Generator® will be more effective. It becomes then a Power Radionics™ device that is boosted with life force.

Use the Power booster PBT 2400 to double the output of the LPOG 2400 DL.

The LPOG 2400 HD = Super Heavy Duty Low Pulse Orgone Generator

Super Heavy Duty Top of the Line Welz Chi Generator®, with Beamer Plate (Well), silver tubing output, and transfer disk, ready to use.



This powerful Chi Generator® is built like the LPOG 2400 DL, and its orgone generator is at least three times as strong. With an additional input option for the EPM Exterior Precision Module, you can more than double its power.

Same Low Frequency Options as the DL:

- Theta 3.5 HZ** — for Super Learning, especially of Languages
- Theta 6.3 Hz** — for Super Learning and to Boost Memory
- Alpha 7.83 Hz** — Earth Resonance! For Invention, Creativity
- Alpha 7.0 Hz** — to enhance ESP (Extra Sensory Projection)
- Alpha 10.0 Hz** — for Centering Yourself and General Purpose
- Beta 14.1 Hz** — for Efficiency in daily activities, and energy

Performer 2400 = Heavy Duty Specialty Device

Powerful Performance Boosting Tool that is legal and spells success !!!

Top of the Line Heavy Duty Welz Chi Generator®, specially designed for persons who are involved in sports, body building, and Fitness.



Twelve precise settings to accommodate practically all of your requirements.

The Performer 2400 is a Heavy Duty Welz Chi Generator® that features the ultimate brain wave technology, specially designed to give persons who are involved in competitive sports, fitness training, and body building a powerful edge over others. You can use it to boost your performance to the max. Above all, unlike many other performance enhancing methods, it defies detection and it is perfectly legal! Some folks actually call this exceptional tool of power the ultimate unfair advantage!

The Performer 2400 features a built-in Frequency Module that has been designed for twelve precision low pulse settings. Each of these frequencies has a special purpose that is important for your power performance:

- 1. very relaxing (Endorphin frequency), strengthens lower back.
- 2. HGH-frequency, helps develop muscle, rejuvenation effects, rapid recovery
- 3. Reduces exhaustion, more energy for extra reps.
- 4. Concentration and Precision, especially for golf, target practice, etc., to reduce fear
- 5. vitality, focus on: Arms, Shoulders, Upper Back, Chest
- 6. vitality, focus on: Abs, Legs, Glutes
- 7. grounding, anti-mind control, improved stress tolerance; feeling revitalized like you've spent a day in the country; enhanced learning, mind-body coordination

- 8. coordination, mood elevator, sense of well being & decreased pain, especially for hangover & jet lag, improved learning, centering, raise body temp, increase physical strength, especially for weak muscle group
 - 9. mind/body unity, enhances activating supplements
 - 10. energy, vitality, imposing subconscious commands on another (body language projects confidence of winning), therefore good to win competitions, rejuvenation effects, enhances muscle builders
 - 11. confidence of victory in sports, Increased Aggression, "energetic steroid"
 - 12. Desensitizer; enhanced vigor & alertness, more reps, overall training Stamina and Endurance
- The Performer 2400 supplies you with continuous Chi energy! A Transfer Disk for smooth and continuous supply of powerful life force is included.

Of course, you can use the Performer 2400 the same way as you use the other Welz Chi Generators, in conjunction with the Power Radionics Program or with the filters of your choice!

The manual that comes with your Performer 2400 HD will tell you how to use this exceptional device for success in sports competitions, and then some! Size: 11 x 6 1/4 x 2 3/4 in.

The Power Radionics™ Devices

The RAD 2000 - 3-Dial Power Radionics™ Device

The RAD 2000 is a three-dial Radionics device with a built-in middle of the line orgone generator® (same as in the LPOG 2400 DL), silver tubing output, stick pad, and beamer plate (well).



While the radionics dials are used to connect with a specific desired trend and/or target of a radionics operation, the orgone generator® intensifies the action and provides the life force ("psionic power") to succeed. A combination of radionics and orgone physics guarantees powerful operations for assured success. It is Power Radionics™!

Uses: The radionics device is "the universal structural link". Rather than using a symbol (such as a card of a filter pack) to determine a trend energy that is designed to a desired effect, the 3-dial radionics device utilizes settings (rates) of the envisioned energies. For more insights about the use of structural links and life force, we recommend that you study the course "Magic of the Future" by Karl Hans Welz.

Use the three dial device to establish a desired trend-target combination or to set a trend for the person who is carrying the transfer disk or any other link to the device.

You can greatly expand the Flexibility and Potential of this radionics device with the RI 2400 CD or PR 2000 CD Power Radionics™ Programs!

Use the Power Booster PBT 2400 to effectively double the output.

The RAD 2400 HD - Heavy Duty Power Radionics Device

The RAD 2400 HD is a Super Heavy Duty Power Radionics™ Device. It has a built-in powerful top of the line Chi Generator®, the same as in the LPOG 2400 HD and Performer 2400.



It features an orgone (chi)-stick-pad. Use three dials to set the rate for the target, three dials to set the rate for the trend, or desired action. The other two dials set the pulse of the built-in Low Pulse Orgone Module. Size: 12 1/2 x 10 1/2 x 3 1/4 in. The addition of pulsed life force (orgone, Chi energy) to radionics makes it a reliable and effective tool to help in your achieving success.

Theta 3.5 HZ — for Super Learning, especially of Languages
Theta 6.3 HZ — for Super Learning and to Boost Memory
Alpha 7.83 HZ — Earth Resonance! For Invention, Creativity
Alpha 7.0 HZ — to enhance ESP (Extra Sensory Projection)
Alpha 10.0 HZ — for Centering Yourself and General Purpose
Beta 14.1 HZ — for Efficiency in daily activities, energy
Continuous Settings, approx. 0.5 - 900 Hz

This awesome new technology adds continuous and very powerful life force to your radionic settings for the most rapid success possible! For increased flexibility and at least double the power, connect an additional exterior module such as the EPM 2400 to the second orgone generating unit inside the RAD 2400 HD!

The RAD 2400 HD comes with one transfer disk. A built-in Voltage Regulator eliminates the "ripple" from the AC-DC converter and keeps the voltage at a steady 8V DC. Elimination of the "ripple" is ideal when it comes to energizing your body! Power supply: AC-DC adapter, 12V, 200mA or higher.

Use archetypal or astrology-based filters or the RI 2400 CD or PR 2000 CD Power Radionics™ Programs to provide any activity you desire with maximum versatility and effectiveness !!!

The RAD 5 = Top of the Line Orgone Radionics™ Device

Donut-shaped combination of five heavy duty orgone generators, ideal in combination with the Radionics Programs for PC. The five out-pipe pipes point to the center. Their frequency settings are radionics rates. **The RAD-5 means scores of choice and ultimate flexibility!!!**



Most radionics devices have one setting, rate, or "frequency". This setting refers to a specific action, or trend. The RAD 2400 series from HSCTI has one set of three dials for the trend and one set of three dials for

the target of the operation. This is still in line with other radionics devices on the market, where you find

one well for the person and another well for the "treatment".

When we developed the digital Radionics Programs, i.e., the RI 2400 CD and the PR 2000 CD, we used our expertise in magickal work for a new approach to radionics. These innovations turned out to be a gigantic step beyond the limitations of conventional radionics: Besides the traditional structural links to the target (usually a person) and the trend energy ("treatment"), we included:

- a setting that reflects the underlying energy (basic action),
- an energy that defines the environment of the target person, and
- an alternate target.

The basic action is a general energy pattern such as universal success that can be represented by planetary patterns or other general symbols.

The trend in the environment is an energy pattern that draws the target person into environments that are conducive for success or have impact upon people in the environment of the target person(s).

The alternate target is a secondary choice, in the case when interferences of any kind prevent the trend energy from reaching the target. Grounding is another good choice for such a situation.

The overwhelming success of the Power Radionics™ Program was the reason, which led us to design a powerful orgone radionics device that matches this computer program: the RAD 5 with its five powerful orgone generators, all of them with silver tubing pointing toward the center of action. They are arranged as a donut shaped Chi Generator® that is connected with a radionics tuner with 5 x 3 dials. Each group of three dials determine the actual frequency of one orgone generator of the RAD 5. The result is a chord of five real frequencies, designed to give a super-boost to your success!!!

Size: Power Part: 11 1/2 x 10 1/2 x 3 1/4 in.

Donut: 10 1/2 inches diameter, 2 1/2 inches tall.



The ATGS 3000 = Astro Trend Generating System™

The ATGS 3000 is by far the most versatile and powerful work station for trend management and mind control on a large scale: treat 12 fields of life experience simultaneously or use for 12 different actions at the same time. It works well with the RI 2400 CD radionics program (included)

Astrological trends are the result of an interaction between the individual astrological constellation at birth (the chart representing the planets at the time of birth) and the planetary positions in the Solar system at any given time. These positions, as seen from the Earth,

take the aspect of a radionics device, or multiple trend-link, of cosmic proportions. The individual modulation effect depends largely on the individual structure of the receiving organism, or target. Astrology describes trends of the past, present, and future, by way of interrelating these structures of the planetary system. Over the millennia, several sets of rules evolved that were eventually condensed into a relatively simple syntax (see my astrology course).

From our point of view, i.e., seeing the planetary system as a huge radionics device that is powered by life force, it was just a small step to actually model a system of life force generators after the astrological basic structure, i.e., the twelve fields of life experience ("astrological houses"). With this generator-modulator of planetary-type life force (orgone), you are now capable of setting up an "astrological greenhouse".

This "astrological greenhouse" compares well to greenhouses that people use to grow plants in areas where the outside climate would never allow such a thing. With your astrological greenhouse (the ATGS 3000) you can now generate astrological trends of very specific events, or actions, when such trends are not promised in an individual chart.

In fact, you can now go one step further: To expedite a solution to a challenge, you can now use planetary positions and patterns that never occur naturally, just the same way that you can use a conventional greenhouse to design climatic conditions and sequences that do not exist anywhere on this planet, but which provide optimal growth conditions for specific plants, allowing them to thrive abundantly!

The advantages of this technology are mind-boggling!!!

The ATGS 3000 allows you to **custom tailor any desired trend** so that it matches optimally the individual structure (as represented by the birth chart) of any person !!! In other words: Now you have the technology to **generate optimal astrological progressions** and to **block undesired trends** successfully. The astrologer who uses the ATGS 3000 is no longer a mere interpreter of trends and at best a counselor. There is no doubt that **the astrologer who uses the ATGS 3000 is the "wise who rules the stars"!** This astrologer naturally is the true professional who in fact is helping rather than merely talking.

The ATGS 3000 has twelve orgone generators that are cast into a donut shape and point toward the center. The output pipes are silver. Each generator represents one astrological house or one astrological sign, depending on your personal preferences. Each generator is powered by a pulse module, the frequency of which is determined by three radionics-type dials. This allows you to set the desired characteristics of each field of life experience (symbolized by the twelve astrological houses) radionically, even if you are not a professional astrologer.

You have an extremely powerful alternative to astrological settings: You can use each orgone generator of your ATGS 3000 individually for one specific radionic action each, 12 different targets with 12 different effects. For this operation, the RI 2400 CD Radionics Program (included) is as excellent an accessory as there can be! With this program you can set up to twelve different actions of the ATGS 3000 at the same time.

The ATGS 3000 is the top of the line Orgone Generator/Radionics Combination Equipment. Its special circular arrangement of twelve power generators, each one powered by a three dial radionics frequency setting, makes the generating of any astrological trend as easy as child's play! The flexibility of this device is unsurpassed! You are virtually creating your own universe!!!

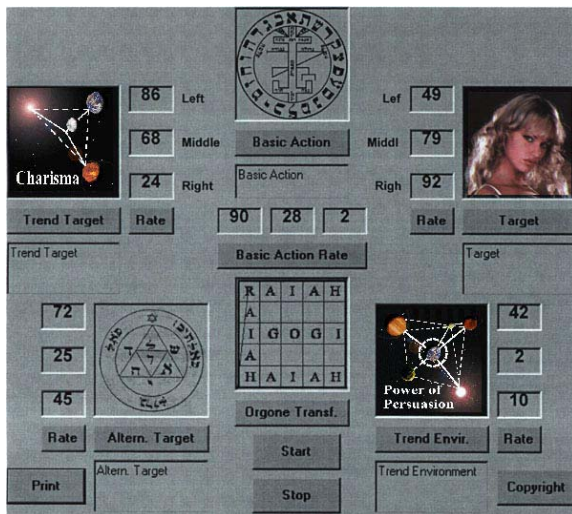
Size: Power Part: 11 1/2 x 10 1/2 x 3 1/4 in.

Donut: 14 inches diameter, 2 1/2 inches tall.

The Power Radionics™ Programs

As is the case with the Radionics Device, the purpose of the Radionics Program is to establish structural links. The purpose of a Welz Chi Generator® is the generating of life force, or Chi energy. Our programs are Power Radionics™ Programs, because you can connect them structurally with a Welz Chi Generator®, which adds Power to your radionics operations.

The RI 2400 CD Radionics Program and Interface for PC



About Power Radionics™

Radionics was first discovered a century ago. It is a technology that involves interaction with the human consciousness. This technology helps you to project at any distance energy (life force) and trends that give inclination to desired effects or results. In the transfer test you have experienced proof that distance is irrelevant in work with radionics. You can use the radionics device to project energy and trends to yourself and to others. This fact makes radionics a powerful tool in your hands, provided that you have the open mind to make use of this extraordinary new technology.

We have shown you that such projection is possible with the help of life force and structural links, even if such structural links are of a purely abstract nature in the form of radionics settings, or "rates". In other words, the technology of radionics can now easily be explained as a direct consequence of the characteristics of life force: Its transfer at any distance by way of structural links and its negative entropy! Assumptions of "esoteric" speculations, or assumptions, such as non-measurable "frequencies", "higher planes", "astral energies", "morphogenetic fields" and the like certainly are a thing of the past, obsolete, and no longer

necessary for a scientific explanation of the amazing effects of radionics!

Power Radionics™ is the logical consequence of this new understanding of radionics: **While the purpose of the radionics device is the establishing of structural links, the purpose of the orgone generator® (Welz Chi Generator®) is to provide the radionics device with massive life energy in order to get far reaching results faster, easier, and more effectively than ever before!**

This combination of the new Welz Chi Generator® with the radionics device, Power Radionics™, opened the door to many new ways to benefit from radionics more effectively than ever before. For this reason, **the new Power Radionics Devices and Power Radionics Programs are very effective tools with near-infinite potential!**

Why Power Radionics™?

Power Radionics is a gigantic step ahead of all conventional radionics devices and radionics programs (see the diagrams on page 13): It adds massive life force to radionics. This means continuous power driving towards the results that you programmed into your computer. The continuous flow of life force is made possible with a special structural link that connects your life force generator (Welz Chi Generator®), the Power Radionics™ Program and the target of your operation: Therefore, each program comes with a fully individualized transfer card and the corresponding file on your program that connect the trend and target settings of your radionics device directly with the trend and target functions in your program.

Another important feature that makes the Power Radionics Program much more effective than the rest is the fact that we included four settings in addition to the "Trend" and "Target" settings in the average radionics program:

- (1) an orgone transfer function to energize the Power Radionics Program (see above about transfer cards)
- (2) a basic energy ("Basic Action") setting that boosts the trend-to-target connection with the principal energy field
- (3) a setting for a trend energy that is exerting an influence upon the environment of the target, for a more rapid overall success, and
- (4) a setting for an alternative target. This alternative target can also be used as a "grounding function" to prevent repercussion to the operator when the trend energy cannot reach the envisioned target for reason of interference, blockage, etc.

You find these extremely important settings only in our Power Radionics Programs. The obvious lack of such overall flexibility naturally makes any other radionics program on today's market inferior to the Power Radionics Programs from HSCTI !!!

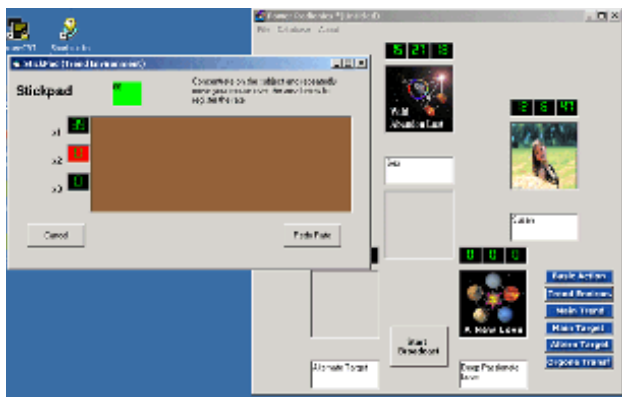
You can use the program by itself, especially when connected to an orgone generator (Welz Chi Generator®). It works best in conjunction with an orgone radionics device: the RAD 2000 or the RAD 2400 HD, and, especially, with the RAD 5 with its 5 heavy duty orgone generators®, one for each setting of the RI 2400 CD. In fact, the RAD 5 was fashioned after the RI 2400 CD.

Actually, you can run as many radionics operations simultaneously as you want and your computer

permits. For simultaneous operations, the RAD 5 or the ATGS 3000 are ideal Chi Generators®. With the ATGS 3000 you can run up to 12 simultaneous power radionic operations!!!

The Power Radionics™ Program comes with well over 1,000 images — a smorgasbord for every serious operator!!!

Especially the magician will appreciate that addition of the talismans of the Key of Solomon the King, the Abramelin Squares, the talismans of the Faust Grimoire, of the Sage of the Pyramids, of the Goetia, and a great many more!!!



The PR 2000 CD Power Radionics™ Program for PC

Like the RI 2400 CD, with additional features:

- **Easy Solutions for your Challenges:** Power Radionics™ comes with thousands of ready-to-use filters for every purpose. You can also use your own easily created filters or images for limitless possibilities.
- **SureRate System:** The Power Radionics™ Program is equipped with an interactive stickpad which ensures the correct radionic settings or rates for your application simply by moving your mouse over a designated area of the screen. There is no guess work!
- **Translucent Chi Transfer:** As an option, you can have Power Radionics™ create an exact filter by combining the Chi transfer and link image together to form a pass-thru on every point.

This new combination of the Welz Chi Generator® with the radionics device, i.e., Power Radionics™, opened the door to many new ways to benefit from radionics more effectively than ever before. This is the reason why the new Power Radionics™ Devices and Power Radionics™ Programs are very effective tools with near-infinite potential!

The EPM 2400 Exterior Precision Module

Range: 0.01 Hz to 99.99 Hz
Precision: 1/100,000

Attach this exterior module to the Heavy Duty Devices: LPOG 2400 HD and RAD 2400 HD. This exact frequency module boasts a total of 10,000 settings. Its precision of 1/100,000 is unsurpassed.



Advantages of the EPM 2400: The "Input EPU" jack on the heavy duty devices (the RAD 2400 HD and LPOG 2400 HD) leads to a second generator in the Heavy Duty orgone generating units. This second generator can be powered up with a pulse input from the EPM 2400.

When having both generators running, you can double the power output of your heavy duty device or better.

Turn the interior pulse generator off (by switching off your HD-device) and you can have an orgone pulse with an extremely precise frequency of your choice.

Another option is to run the interior pulse generator at one of the pre-set frequencies (such as the 7.83 Earth Resonance Frequency, a favorite of many) and at the same time set the second generator at any frequency you desire (for instance 5.9 Hz for golfers, 20 Hz for magick, 25Hz for sports in general, etc.).

The advantages of this exact frequency generator are obvious: With it you can now set your generator output at any frequency that you desire, any frequency that best reflects your needs.

This exterior precision pulse module has been designed to meet the requirements of persons who desire to set any frequency of their choice with absolute precision, stability, and reliability. This exact frequency requirement is desirable for specific purposes such as performance enhancement in sports, or when you work with a radionics system that is based on actual frequency settings. Therefore, you can use it in conjunction with a stick pad, pendulum or other device to determine frequencies that work very much like radionics rates. This way you can either set up a system of exact frequencies that reflect specific trends or you can use a book that gives you a list of these frequencies.

The radionics qualities of this extraordinary device allow you to get a frequency rate either by rubbing a stick pad, then, when you feel the "stick", by pushing the "random" button, or by releasing the other buttons to set frequencies whenever you feel the stick.

The Power Boosters and Transfer Couples to increase the output of standard and middle of the line Chi Generators® and for Energy Transfer.



The Power Booster PBT 2400 (like all devices, with silver tubing) comes with a Transfer Disk. The Transfer Disk will give you assured smoother transfer of life energy.

Both, the power booster and the transfer disk are made of the new Super-Organite®. A built-in structural link connects the transfer disk with its Power Booster. Booster size: 1.5" long, 1.7" diameter - Transfer Disk: 1" diameter

Uses: Carry the transfer disk on you while your Orgone Generator® or Orgone Radionics™ Device with attached Power Booster is in your home. With this simple arrangement, you can carry the energy of your Orgone Generator® or Orgone Radionics™ Device with you - any place in the universe! It is especially suited for the JU 99 CE and other Chi Energizers™, the output of which the power booster more than triples, and the

middle of the line devices (the RAD 2000 and the LPOG 2400 DL), the power of which is doubled by the PBT 2400.



Transfer Couple TC 99: Put one part in front of the output pipe of any Welz Chi Generator. Carry the other part on you. You decide which part you prefer to carry on you. Disk diameter: 1 -- Rectangle size: 1.75" x 0.8"

The Filter Packs

In the following, you find a set of well-known and very effective accessories to the Chi Generators® and Power Radionics™ Devices. These accessories, or filters, function as structural links to a variety of trends. They are especially advantageous for the person who has encountered slight challenges when using radionic devices. **All filters cards are laminated**

AoD 48 - The Alphabet of Success - 48 cards

The Alphabet of Success is a set of 48 cards with archetypal symbol designs. These designs are structural representations (trend links) that account for most basic desires that an individual can have. Combine the cards and you can set up appropriate energy filters for most anything you plan to do: From Self-Help to skillful Trend Management!!!



SZP 20 - Stress-Zapper/Energy-Booster Pack - 20 cards

We live in an era that is a multiple daily challenge to our body, mind, and emotions. This is so, because the place where we are working is not safe, the food that we are eating is not safe, and the environment in which we are living is not safe.



Therefore, the demands of life are often more than our body and mind can handle. The usual results are enormous stress and lack of energy. That's where the Stress Zapper and Energy Booster Pack comes to your relief! Use this set of tools one to two hours a day, and you will notice a significant difference in how you feel: relaxed and invigorated! More importantly, you can get a lot more done than before and you are going to get it done well! For the person involved in sports, body building and exercising, this is extraordinary performance enhancement that is legal and defies detection. Great for weight control!

SXP 20 - The Sex Pack - 20 cards

The Sex-Pack is designed to bridge the gap between you and total sexual ecstasy with the partner that fits you best! It is a set of archetypal links with the trends that you can apply in most situations that arise in a relationship. For instance, the sex-pack can help you find this special person who is the love of your life. Describe the person whom you want to meet and put the filters of the sex-pack to work! If you like to cause someone you know to look more favorably at you, select the appropriate filters to draw that special person towards you and boost it with the life energy from the Welz Chi Generator®! To rekindle an existing relationship and bring variation into your sex life, the

Sex-Pack has the right filters for this purpose! **There is something for every taste and for every desire in this extraordinary set of archetypal designs!**

IN 20 - Super Learning & Intelligence Pack



The Super Learning and Intelligence Pack is designed to help increase mental skills! Use Self-Management Techniques to help boost intelligence and intuition. This exclusive package can make all learning and acquiring of new skills what it should be: relaxing, easy, and fun! Ideal in combination with low pulse orgone frequencies!

BMP 20 - Business and Money Pack - 20 cards



Pave your road to spectacular success with the help of this exciting set of Tools! Designed to improve your efficiency, creative skills, intuition and logic in business and to get this feel of money that is so crucial for your overall success! This set contains also an arsenal of tools that are helpful in your dealings with other people: business partners, opponents, associates, employees, professionals, etc.



LP 24 - Legal Pack - 20 cards

Covers many situations that come up in legal matters.

PSP 20 People Skills Pack - 20 cards

It is extra power to help you in dealing with people, partnerships, public speaking, politics, etc.

ATD 20 Attack and Defense Pack - 20 cards

An excellent help for protection, to make attacks at a distance ineffective and for effective retaliation, designed to calm any attacker down.

GP 20 Gambling Pack - 20 cards

A tool to boost the odds in your favor and at the same time develop the skills to run gambling as a business.

Combinations of Equipment, Kits, Work Stations

For Your Successful Practice Of Self-Help, Neuro-Cybernetic Programming™, General Trend Management, and Electronic Mind Control

- Self-Help to improve intuition, creativity, mental capability, energy, relaxation, balance, inner peace
- Neuro-Cybernetic Programming™ (NCP) to change trends of your life path and for protection
- Trend-Management and Trend-Creation to cause abundance, prosperity, and a suitable environment for all.
- Electronic Mind Control for full control of the environment

Self Help can now be more effective and faster for you than ever before. With the invention of the new Welz Chi Generator®, the use of Light-Sound Devices as mind machines have become a thing of the past ... obsolete! This is so, because with the new Welz Chi Generator you can now easily induce brain wave states such as Alpha, Beta, Delta, and Theta the natural way! The LPOG

2400 series and the RAD 2400 HD were designed specifically for that purpose! This works exceedingly well also in situations, when when you have to transfer life force that pulsates in ELF (Extreme Low Frequency or brain wave frequency) to yourself at a distance. Naturally you can enjoy its effects and benefits fully anywhere you are! The Welz Chi Generator® in your home transfers energy to you wherever you are -- whether just a few blocks away or half around the globe. You have found proof of this exciting fact with the transfer test.

SELF-HELP!

At the Turn of a Dial....

- Stress Management: Total Relaxation, Balance, and Inner Peace in Minutes
- Mind Management: Speed Learning, Intelligence, Intuition, Creativity
- Energy Management: Stamina, Energy, Discipline, Decisiveness, Persistence

Basic Equipment:

The SHK 001 Self Help Kit #1:

The JU 99 CE and RI 2400 CD Power Radionics™ Program

NEURO-CYBERNETIC PROGRAMMING™ (NCP)

The kits for NCP have another feature that's exciting: Attach the structural link to a specific desired trend to it and you have a powerful machine that you can use to help change your habits and life itself!!! We call this process Neuro-Cybernetic Programming or, brief, NCP. With NCP you can now design programs for success in any one of your endeavors such as....

Money- and Business Management: Money, Sales, Success, Security, Beat the Odds
Relationship Management: Marriage, Children, Love, Friendship, Charisma.
Communications Management: Leadership, Convincing Speech, Power, Popularity

Middle of the Line Equipment:

NCPK 002 -- Neuro-Cybernetic Programming™ Kit #2:

The LPOG 2400 DL and PR 2400 CD Power Radionics Program

NCPK 003 -- Neuro-Cybernetic Programming Kit #3:

The RAD 2000 and PR 2000 CD Power Radionics Program

You can use Trend-Management and Trend-Creation in success strategies designed to cause abundance, prosperity, and a suitable environment for all.

Top of the Line Equipment:

EXP 002 Expert Kit #2, Heavy Duty Trend Management and Trend Creation

The RAD 2400 HD Radionics Device (Top of the Line), with the PR 2000 CD Power Radionics™ Program

EXP 003 Expert Kit #3, Heavy Duty Performance Boosting in Fitness, Body Building, Sports Competition, etc.

The Performer 2400 Heavy Duty Specialty Welz Chi Generator, with the EPM 2400 and the PR 2000 CD Radionics Program for PC

Equipment for Electronic Mind Control:

HSCTI Equipment for electronic mind control has been specifically designed to give you the ultimate edge in power and versatility in anything you decide to do. The Electronic Mind Control System (EMCS) can be the decisive factor in situations where you find it necessary to gain total control.

EMCS-X 3000 - Electronic Mind Control System #1

The RAD 5 Advanced Orgone Radionics™ System, with the PR 2000 CD Power Radionics™ Program for PC

EMCS-X 3000 PLUS - Electronic Mind Control System, Advanced Version

The ATGS 3000 Astro Trend Generating System, with the PR 2000 CD Power Radionics™ Program for PC

By adding devices and connecting them, you can upgrade your equipment into an increasingly more powerful work station, the effectiveness and versatility of which will always be more than the sum total of its components.

New! The AO 2000 Water Optimizer™



Orgone water is well known. It is water that has absorbed life force (Chi energy, orgone, prana) after having been put either into an orgone accumulator or in the vicinity of an orgone generator™.

It is super charged with life force and very beneficial. It has a slightly bitter after taste, and it does not have the properties of "living water", i.e., water that has been revitalized into its original state.

Most living water products on today's market lack the massive life force that water can absorb in an orgone accumulator or next to an orgone generator®.

With the AO 2000 Orgone Aqua Optimizer™ you can now get the best of both worlds: Living water that is saturated with life force. This extraordinary new device is the result of the Super-Organite® composite material in a new generator of polarized Chi energy that contains also all the necessary elements to put water back into its "sweet tasting" original state. Get proof of it with our free test! Using Orgone Radionics™ technology, you can now get this test anywhere, no matter how far away you are from our equipment.

Living water that is charged with life force stays much

longer fresh as a result of significant microbiological changes towards a healthy environment. It features:

A taste that's excellent, to the point of being addictive

A softer "feel" when you reach into it

A powerful feeling of being energized after you drink it

A better taste of food and drinks and longer life

It enhances the growth of plants. This is plainly visible: stronger plants, more blossoms and larger and better tasting fruit, and more beautiful flowers

It can save you laundry powder

Being saturated with life force, it keeps helping the environment even after use

It is attractive to animals. Especially cats feel attracted to water that has been revitalized by means of saturation with life force

You can make living water (water that has been returned to its natural energetic state and saturated with Chi energy - life force) with ease: Simply put a bottle or cup of water of your choice (store bought or filtered) on top of the new AO 2000 (Aqua Optimizer™ 2000) for a few minutes. Then enjoy.

Karl Hans Welz, Inventor of the Orgone Generator®

Karl Hans Welz is from Telfs in Tyrol, near Innsbruck, Austria. At a very early age, he has developed a fascination for science in general and for the stars in particular. Consequently, he has read eagerly any book on astronomy, astrophysics, mathematics and physics that he could get hold of. At age 16, he became interested in the subject of hypnosis. He began studying this discipline, later he perfected Autogenic Training and eventually, at age 18, he began the practice of Hatha Yoga. This practice strengthened his then frail body within a few weeks and his overall condition and health improved considerably. Quite naturally, these spectacular results gave Karl an incentive to explore other sciences that were not part of his academic curriculum. Studies and practice in astrology, practical magic, rune magic, and practice of various forms of life energy technology such as astral traveling and clairvoyance followed within one year. He studied the works of Mesmer, Korschelt, von Reichenbach, Tesla, Lahkowski, and others. At age 19, Karl began his graduate studies in mathematics and physics. Several times, he interrupted his academic studies to travel extensively. In the course of these travels, he gained valuable information about magical practices and the use of life force in many cultures and traditions and he met many gifted teachers and adepts on the subject matter.

During his stays in South Africa, Switzerland, Berlin, and, since 1974, the United States of America, he continued his studies, which he then rounded off with general semantics, radionics, Reichian psychology, and orgone physics. Shortly after his arrival in the United States, he built his first orgone accumulators and conducted multiple experiments with these amazing devices. It was obvious that what Reich called orgone was the same form of energy that he had explored for more than a decade before knowing of Reich. In fact, a device he built years earlier following the plans of Korschelt was an orgone accumulator. Korschelt called his device a "Solar Ether Radiation Apparatus" — its plans are dating back to 1897. Mesmer's barrels with iron filings, also built and tested by Welz years before he studied Reich, were obviously the earliest orgone accumulators of which we know that were built by a scientist with the accumulation of life force in mind. Therefore, we can safely say that Franz Anton Mesmer has invented the life force accumulator one and a half centuries before Reich.

Soon he realized that orgone can be projected at any distance and that this projection follows structural links. This is a fact that was evident to people of all ages and cultures who harnessed life force, such as shamans, conjurers, spiritual workers, magicians, and healers. For this type transfer he had to develop a mathematical model that accounts for this phenomenon. This model also accounts for many of the amazing phenomena of ESP, magic, radionics, even astrology.

In 1992, he invented the orgone generator®. This extraordinary new device is a significant step beyond the mere accumulating of orgone energy as happens inside the orgone accumulator. Furthermore he realized soon that pulsed orgone energy (which an orgone generator can produce — or a rotating planet) transforms DOR (deadly orgone) back into orgone energy. The problem of "orgone accumulators going bad" when afflicted by DOR was successfully counteracted with a technological device for the first time in known history. More striking proof of this characteristic of orgone generators® became evident when he invented a DOR generator. The orgone generators™ proved to be effective in counteracting the negative effects of devices that develop DOR when operating, such as radioactive smoke detectors, fluorescent tubes, TV screens, and other electromagnetic pollution. The orgone accumulating devices on the other hand, are ineffective. In fact, these devices "foul up", i.e., when exposed to deadly orgone (DOR) too long, they accumulate it and consequently become centers of this energy.

Soon Karl Welz recognized that the orgone generator® can be a significant help in many practices involving the use of life energy (or orgone) such as the development and practice of ESP, magic, self improvement, and trend generation with the help of astrological energies. Extensive testing confirmed that orgone that is pulsed in low frequencies (Alpha, Theta, Delta states, etc.) is considerably more effective to cause the corresponding brain wave states than any one of the now obsolete methods that use sound, light, or electric pulses.

The orgone generator® has been on the market since early 1993. Tens of thousands of people all over the world who decided to have an edge in their aspirations are now the proud owners of these devices. In 1994, Mr. Welz invented a new orgone accumulating material (orgonite®) that is significantly more effective than the traditional materials such as layers of steel wool and fiberglass or celotex. This new material allows making powerful orgone generators® of very small size!

Important! HSCTI sells the orgone generators®, power radionics™ equipment and other devices exclusively for research. After extensive research and many positive results, some academic scientists have already acknowledged radionics and yet some didn't. Therefore, acceptance of these concepts and the effectiveness of radionics devices is my personal decision. All references to radionics, life force, etc., in our brochures reflect opinions of users of the devices from HSCTI, not the manufacturer. These devices have no therapeutic value at all and should never be used for such purposes. The use of the devices is the full responsibility of the purchaser. I have read and I understand this disclaimer.

All contents Copyright © 1995, 2004 by Karl Welz. All rights reserved. The Terms "Welz Chi Generator®," "Chi Generator®," "Power Radionic™," "Orgonite®", "Orgonit™", "Orgone Generator®", etc., are trademarks of Hyper Space Communications and Technologies International. Patents Pending.

