

**FORMERLY BARNES & BARNES TIE SAWMILL - SIMSBORO, LA 9/7/2020-10/22/2020**

**LOT #**

**1 IMPORTANT AUCTION INFORMATION - PLEASE READ**

ATTENTION BIDDERS: This is a online only auction. All bidding is done over the internet. There is no on-site bidding available. Wooley Auctioneers Inc. strongly recommends that potential bidders inspect each item in person before placing your bids.



INSPECTION PERIOD: Tuesday October 20th from 1:00pm - 5:00pm AND Wednesday October 21st from 10:00am - 5:00pm

**SAWMILL OFFERINGS**

EXPLANATION: The "North 20" Sawmill Facility will be offered as a package for one bid price including the real estate. This offering will be designated as auction lot number 301. The "South 40" Original Bandmill Sawmill be offered piecemeal (auction lot numbers 1-217) AND in BULK to include the COMPLETE SAWMILL OPERATION INCLUDING REAL ESTATE (auction lots 1-217 combined) for one bid price. The bulk offer will be designated as lot number 300 and will begin to close 30 minutes after the piecemeal bidding has concluded. The cumulative of the piecemeal bids will be compared to the final bulk bid amount, and the Bankruptcy Trustee will have the option to choose which way the property is sold.

ROLLING STOCK: The rolling stock (auction lots 3700-5300) is not included in the piecemeal or the bulk offering and will be sold separate & apart from the piecemeal & bulk offerings.

Contact Auctioneer Brad Wooley with any questions about the online auction process at [brad@wooleyauctioneers.com](mailto:brad@wooleyauctioneers.com) or 501-940-3979

**LOT #**

**1a 40+/- Acres Located at 5235 Hwy 563 Simsboro, LA**

40+/- Acres Located at 5235 Highway 563, Simsboro, Louisiana a/k/a SW ¼ of SW of Section 27, Township 18 North, Range 4 West, Lincoln Parish, Louisiana. Lincoln Parish Parcel No. 27184563001. This offering is for real property only and does not include sawmill equipment or personal property. Real Estate is offered in "AS-IS" condition.



**1b Precision Husky P-848H Debarker & Log Deck**

8" +/- w x 48' +/- w/50 hp; 8' +/- to 20 +/-' Log Lengths, 15" +/- d x 16" +/- w Barking Head with Log Kickers, Log Rotation Rolls; Hydraulic Power unit; Operators Cab; and Elevated Stand



**2 Custom Built 25' 5-Strand Log Deck & Log Turner**

On Elevated Steel Platform w/ Wood Decking



**3 Filer & Stowell 3-Knee Straight Line Log Carriage**

With Carriage Hydraulic Power Unit, 30hp; Setworks; Operators Cab; Thomas Industrial Controls Control System; and Corley Model 386 Shotgun Feedworks, with 2 Hydraulic Power Units. Each 150 hp



**4 Knockums 3640 7' Single Cut Upright Bandmill**

W/ Hydraulic Power Unit; and 6' Box Chain Conveyor



FORMERLY BARNES & BARNES TIE SAWMILL - SIMSBORO, LA 9/7/2020-10/22/2020

**LOT #**

- 5 Crosby 30' Infeed to Gang Saw Live Roller Bed**



- 6 Crosby 11196-R 48" Board Edger**  
Includes 10' Belt Conveyor Located Below



- 7 Custom Built 50' +/- Transfer Roller Conveyor**  
Infeed to Gang Saw



- 8 Crosby Model 30 30' +/- Gang Saw, S/N N36851;**  
with Roller Infeed and Outfeed



- 9 Custom Built 12' +/- Feed to Trimmer Saw**  
Transfer Deck; 5-Strand; w/ Unscrambler



- 10 Newman-Whitney Model KNO-24 8-Head Drop Saw**  
Trimmer



- 11 Custom Built 25' +/- Trimmer to Grading Chain**  
Transfer Deck; 5-Strand



- 12 Custom Built 90' 5-Strand Grading Chain/Log Deck**



- 13 Custom Built 16' Live Transfer Deck; 3 Strand**



**LOT #**

- 14 Custom Built 40' +/- Transfer Deck,**  
4-Strand



- 15 Tie Stacking and Cut Off System (saw removed)**  
(Saw Removed)



- 16 (2) Cutler-Hammer Section Switch Boards**



- 17 (10) A-B Quality Allen-Bradley Breaker Boxes**



- 18 Cutler-Hammer Breaker And Toshiba TD-013AC TD Seri**  
Labeled As Control For Gang Saw Motor



- 19 Breakers; Starters; Electrical Components In Group**  
Labeled As Chipper Controls



- 20 Assorted Breakers, Breaker Boxes & Electrical**  
Components in Group



- 21 Lot of Square D Breaker Boxes And Breakers In**  
Group



- 22 Precision Husky 30' Vibrating Conveyer**  
On Concrete Supports



FORMERLY BARNES & BARNES TIE SAWMILL - SIMSBORO, LA 9/7/2020-10/22/2020

**LOT #**

- 23 Precision Husky 60" +/- Chipper on Steel Platform**



- 25 Precision Husky Model 6x6 6'x6' +/- Shaker Screen**  
S/N 2462



- 25a Ingersoll-Rand R90i-A125 Rotary Screw Air Compress**  
S/N V2986U16279, (2016), 125 hp;  
Enclosed Cabinet



- 26 Custom Built 119' +/- L Trough Clean Out Drag**  
Chain Conveyor



- 27 On-Site Built 45' +/- Belt Conveyor from Bandsaw**  
to Vibrator



- 28 Custom Built 35' +/- L x 17" +/- W Incline**  
Outfeed Conveyor Trough



- 29 Custom Built 40' +/- L x 17" +/- W Incline**  
Clean Out Box Belt Conveyor



- 30 Custom Built 36" W x 15' Belt Conveyer**  
Conveyor to Vibrator



- 31 Custom Built 19" +/- W x 21' +/- L Incline**  
Trough Belt Conveyor



**LOT #**

- 32 Custom Built 19" +/- W x 26' +/- L Trough Belt**  
Conveyor



- 33 Open Air Steel Building 3,200+/- SF**



- 34 Open Air Steel Building 2,160+/- SF**



- 35 Open Air Steel Building 1,326+/- SF**



- 36 Open Air Steel Building 840+/- SF**



- 36a Open Air Steel Building 960+/- SF**



- 36b Fairbanks Truck Scale Model PLT 6010-509**  
Estimated 12' W x 70' L Truck Scale S/N  
77970 w/ Digital Read Out



- 36c Custom Built 60"D x 65"W x 20 1/2' L Lumber Dip Tank**  
Contents Must Be Contained And  
Removed before Removal. No Exceptions.



- 54 Pacific Trail Manufacturing Model 014-EMMSS Electr**  
S/N 201519, 10 hp; 48" x 48" Cutting  
Capacity





FORMERLY BARNES & BARNES TIE SAWMILL - SIMSBORO, LA 9/7/2020-10/22/2020

**LOT #**

- 55 Armstrong Model 4RH 4" Bandsaw Sharpener Grinder**  
S/N 8669, Right Hand (Does Not Include Bandsaw Blade)



- 56 Armstrong Model 5 Stretcher Roll**  
S/N 13538



- 57 Armstrong Model 54 Hand Sharpener**  
S/N 13598



- 58 Armstrong Model 310C Stretcher Roll**  
S/N 18300



- 59 Wright Machine Tool Model W-350 Auto Dual**



- 60 Wright Machine Tool Model W-350 MHD Auto-Dual 6" t**  
S/N B-0806; Dual Head



- 61 Precision Husky Model 6K 6-Knife Tub Knife Sharpener Grinder**



- 62 IMW model 240SS Babbett Resurfacers**



- 63 Blade Sharpener on Stand**



**LOT #**

- 64 (4) Band Saw Blades (on floor)**



- 65 (3) Band Saw Blade (2 on ceiling, 1 on machine)**



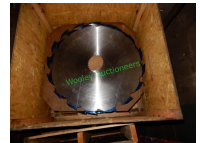
- 66 (40 +/-) 30" Circular Saw Blades**



- 67 (12 +/-) 21" Circular Saw Blades**



- 68 (20 +/-) 30" Circular Saw Blades NEW IN CRATE**



- 69 Blade Filing Station**



- 70 Saw Tooth Station**



- 71 Oxyacetylene Tanks, gauges, torches, leads**  
No papers on tanks



- 72 Industrial Radiant Heater, 3 Phase**





FORMERLY BARNES & BARNES TIE SAWMILL - SIMSBORO, LA 9/7/2020-10/22/2020

**LOT #**

**73 Heat Buster Shop Van**



**74 Shelf and Contents**

Including Oxyacetylene Torches, Leads, and Support Equipment, Compact Refrigerator, Microwave Oven, Tools and Tool Boxes, and Other Misc Items in Group



**75 Metal Cabinet and Contents**

Yellow; Includes Torch Gauges, Bits, Sockets, and Other Misc Items in Group



**77 Contents of Wooden Shelf**

Includes 2 Cases of New Box Grinding Wheels, Tools, Parts Bins, Chain, Wire, Chalk, Tool Boxes, And Other Assorted Items In Group



**78 Heavy Duty Socket Set**

1" Drive, Pittsburgh



**79 Heavy Duty Wrenches In Group**



**79a 3 Wooden Stools in Group (Does Not Include Wrenches)**



**LOT #**

**80 McDonough Manufacturing Mfg Co BDM531 Grinding/Fil**  
Includes Shopvac



**81 Assorted Hydraulic Hoses and Drive Belts In Group**  
(Hanging In Hose and Belt Room) (Large Lot, 300+/-)



**82 Contents of Two Shelves**

Including Air Filters, Fuel Filter, Breaker Boxes, and Other Consumable Inventory On Shelf



**83 Contents On Wooden Shelf**

Including Bearings, Fittings, Breakers, Grindstones, And Other Consumable Items In Group



**84 Miller Dialarc Welder**

CC-ACDC Arc Welding Power Source



**85 All Remaining Items in Belt Room Not Previously So**

Including Drag Chain, Fluorescent Lighting, (8) Used Tires, Truck Bumpers, Hoses, And Other Items. Attend Open House Preview For A Better Look.



**86 Pressure Washer Stihl RB 600**

Starts & Runs; Includes Heavy Duty Hose



FORMERLY BARNES & BARNES TIE SAWMILL - SIMSBORO, LA 9/7/2020-10/22/2020

**LOT #**

- 87 Ingersoll-Rand Model SSR-EP 100 Rotary Screw Air C**  
S/N CK2441U99242, 100 hp; (OUT OF  
SERVICE/ SALVGE UNIT/ NOT  
CURRENTLY IN  
OPERATION/FUNCTIONALITY  
UNKNOWN)



- 88 Assorted Parts & Metal In Group On Shelves**



- 89 Large Group of Gears, Pulleys, Clamps, Bearings,**  
And Other Consumable Inventory On Wall  
and Benches



- 90 (9) Assorted Electrical Motors And Other Items In**  
Group (On Benches & Floor)



- 91 (9) Assorted Electrical Motors And Other Items In**  
(On Shelves & Floor, w/ Breaker Boxes)



- 92 Edger; 24" w/ Hytrol Roller Conveyor; (OUT OF  
SERVICE)**



- 93 Dayco Automatic Crimper**



- 94 Delta Bench Grinder**



**LOT #**

- 95 Rockford Engine Lathe**



- 96 Index Machine & Tool Company Fabrication Machine**



- 97 TriStar Model BDP5 Drill Press On Stand**



- 98 Gantry Crane On Wheels w/ Dayton 1/2 Ton Chain  
Hoist**



- 99 (4) Industrial Warehouse Fans w/ Vents for Each  
Fan**



- 100 Miller Midel SRH-44 Welder**



- 101 Pacific Trail Manufacturing Electric Mobile**  
Crosscut Saw (NOT COMPLETE, Missing  
Motor/Controls/blade, OUT OF  
COMMISSION)



- 102 Heavy Duty SKK Electric Motor & Drive**



- 103 Heavy Duty Electric Motor**



FORMERLY BARNES & BARNES TIE SAWMILL - SIMSBORO, LA 9/7/2020-10/22/2020

**LOT #**

**104 Heavy Duty Electric Motor**



**105 Items Between Door & Support Beam Excluding Motors**

Door & Support Beam; Including Hydraulic Cylinders, Rollers, Hand Pump On Wall, & Other Items In Group. Does Not Include (3) Electric Motors previously sold



**106 3' x 32" Metal Braces**



**107 Shelf & Contents**

Including (6) Gas Charged Shock Absorbers In Box, Welding Leads, Socket Wrench, 4 Way Tool



**108 Custom Built 49" x 49" +/- Metal Shop Table On Whe w/ moveable decorative pigs underneath**



**109 Contents on Shelf**

Including Heavy Duty Hydraulic Hose, Fire Extinguishers, Heavy Duty Jack, & Other Items In Group



**110 2 Parts Bins & Contents On Wooden Shelves**

Including Table Vise, Nuts, Bolts, Fittings, Controls And Other Items In Group



**LOT #**

**111 Desk & Contents**

Including Table Vise, Nuts, Bolts, Fittings, Controls And Other Items In Group



**112 Large Assortment of Drag Chain, Drive Chain; including Wooden Table**



**113 Pocket Saw; Powered By Honda Gas Engine; (NEEDS REPAIR)**



**114 KBC Model BAH712HD Horizontal Band Saw S/N AE5378**



**115 Tub Sharpener**



**116 Central Machinery 16-Speed Drill Press**



**117 Tecomec Jollystar Chainsaw Blade Sharpener on Stand**



**118 Pallet Load of (26) cases Kleen DEF Fluid**



**119 (4) Cases Extreme Multipurpose High Temp Grease**





FORMERLY BARNES & BARNES TIE SAWMILL - SIMSBORO, LA 9/7/2020-10/22/2020

**LOT #**

**120 (13 +/-) Gallons Zerex G-05 Formula Antifreeze**



**121 (31) Gallons Preferred Lubricants Bar Chain Oil**



**122 (18 +/-) Gallons Delo 15 W40 400 SDE Motor Oil**



**123 (5) Cases of Welding Rods**



**124 Hydraulic Cylinders, Drive Axles, Knife Blades, and Other Items**



**125 Variable Volume Hydraulic Pump; Bosch Rex Roth, (REBUILT)**



**126 Water Pump; D3JR MBM, (NEW)**



**127 (3) Electric Motors**

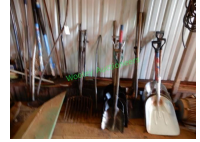


**128 Air Hoses, Belts, Drag Chains (Hanging On Wall)**



**LOT #**

**129 Assorted Shovels, Rakes, Scrapers, Brooms, Log Grabber, & Other Hand Tools In A Group**



**130 Precision Huskey Vibrator Throat**



**131 Warehouse/Shop Lighting, Fittings, Wheels, & Other Items In Group On Shelves Along Wall**



**133 (9) 20" Circular Saw Blades AND (2) 30" Circular Saw Blades In Group**



**134 Pocket Saw Blade Bar**



**135 Pocket Saw Blade Bar**



**136 Assorted Bearings, Fittings, Air Bags, And Other Items In Group**



**137 PPE Personal Protective Equipment Including Hard Hats, Welding Masks, Reflective Safety Vests, Gloves, Safety Goggles, Rain Jackets, Rubber Boots, And Other Items In Group**



FORMERLY BARNES & BARNES TIE SAWMILL - SIMSBORO, LA 9/7/2020-10/22/2020

**LOT #**

**138 Lot of Sealed Bearings, Electric Motor, and Other Items In Group**



**139 Lot of Gear Drives, Fittings, And Other Consumables In Group**



**140 (3) Wheel Barrows**



**141 Steel MSE 250 C Electric Chain Saw**



**142 Kobalt Paint Sprayer With Gun**



**143 Chicago Electric Impact Wrench, Central Pneumatic Heavy Duty Impact Wrench**



**144 Portable Air Tank**



**145 Signode Banding Tool**



**146 Heavy Duty Makita Grinder; and Hitachi Grinder**



**LOT #**

**147 (25 +/-) Band Saw Blades In Group**



**148 Heavy Duty Metal Shop Table 36" +/- L x 34" +/- W x 36 +/- H**



**149 Custom Built Shop Cart On Castors**



**150 Adjustable Stands In Group**



**151 Rigid Tri Stand Model 450**



**152 Chain Saw Blade Sharpener, (2) Dewalt Angel Grinders, Utility Light, and (2) Extension Cords, and Metal Table**



**154 (2) Tripods**



**155 Assorted Lubricants and Coolants In Group**



**156 (2) Heavy Duty Pipe Wrenches, Rigid 60", and 36"**



FORMERLY BARNES & BARNES TIE SAWMILL - SIMSBORO, LA 9/7/2020-10/22/2020

**LOT #**

**157 (3) Axes, (1) Sledge Hammer**



**158 Custom Built Ice Chest with Wheels and (4) 5**

Gallon Drinking Water Dispensers with Spigot



**159 Wheel Mounted Anvil**



**160 Utility Light On Stand**



**161 Metal Saw Horse, And Hydraulic Hoses In Group**



**162 Drag Chains, Gear Drives, And (2) Machine Steps**



**163 Pocket Saw Chain Blades In Group**



**164 Worbark Winn Mich. Green Wood Chipper**

Model 58 S/N 326



**165 Green Wood Chipper Model**

Model C1661



**LOT #**

**167 Water Pump GOULDS 3196, Electric Motor, Tank, DucTile TP30 012121**



**168 Grove Gear Cast Iron Single Reduction Worm Reducer Model # GR-B-860-10-R**



**169 Electric Motors And Pump Parts In Group And Large Pulley. DOES NOT INCLUDE GROVE GEAR PREVIOUSLY SOLD**



**170 (30 +/-) Rolls of Green Banding Material**



**171 Salvage Metal And Cross Ties In Group**



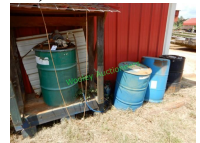
**172 Alkita/Alkota Cleaning Systems S/N 275623 Model 518X4 functionality unknown**



**173 55 Gallon Drum On Metal Stand**



**174 3 Metal 55 Gallon Drums w/ Pump Motor, and Contents**



**175 60" Circular Saw Blade**





FORMERLY BARNES & BARNES TIE SAWMILL - SIMSBORO, LA 9/7/2020-10/22/2020

**LOT #**

**176 Desk & Contents**



**177 HP LaserJet Pro 200 Color MFP Printer Model**

M276nw, Paper, Ink



**178 2 Microwaves (One in Unopened Box)**



**179 Desk & Contents**



**180 Contents Of Equipment Maintenance Room**



**181 Contents Of Closet**



**182 Shelf And Contents**

(Does Not Include User Manuals)



**183 (4) Automatic Banding Tools; (3) Fromm Model P329**

(1) MJ Maillis w/ Batteries



**184 Box of (4) OPT BX34V BELT, And (2) 46RSLF-100'**

2-100' Reels Skip Tooth Saw Chain Made Into Loops 12@246e



**LOT #**

**185 (4) Office Chairs**



**186 Desk and Contents**



**187 Weedeater Efco 8271T 187**

Functionality Unknown



**188 Shipping Container – Green, Contents Unknown**

201' x 8' +/- , UACU 324528 – 22G1 Max

Gross: 30,480 KGS, 67,200 LBS



**189 (2) Single Fork Attachments for Fork Lift In**

Scrap Metal Pile



**190 Water Pump & Electric Motor w/ Breaker Box And**

Breaker



**191 Water Pump & Electric Motor w/ Breaker Box And**

Breaker



**192 196" +/- 7"x 9" +/- Cross Ties And Assorted**

Lumber On Skatewheels



**193 10' x 12' +/- Metal Shed**



FORMERLY BARNES & BARNES TIE SAWMILL - SIMSBORO, LA 9/7/2020-10/22/2020

**LOT #**

**193a Bundle of Stacking Sticks, 4' +/- L**



**194 (4) Packs of White Oak Lumber**  
Assorted LxW (8'L, 9'L, 10'L & 9"W +/-)



**195 (3) Packs of Red Oak Lumber, Assorted LxW**



**196 (2) Packs of Red Oak Lumber, Assorted LxW**



**197 Pack of Crossties 104" +/- L**



**198 (9) Packs of Gum Lumber, Assorted LxW, Assorted Species**



**199 (15) Packs of Gum Lumber, Assorted LxW, Assorted Species**



**200 (9) Packs of Pine Lumber, Assorted LxW**



**201 Pack of Red Oak Lumber, 9' +/- L**



**LOT #**

**202 (3) Packs of Pine Lumber, Assorted LxW**



**203 (30 +/-) Misc Packs of Lumber (All Remaining Packs of Lumber In Yard)**



**204 Scrap Metal Pile # 1**



**205 Scrap Metal Pile #2**



**206 Onsite Built Backdrop Made From Flat Bed Trailor**  
By Woodchips/Mulch



**207 Remaining logs in group**



**208 Lumber Rack on Wheels**



**209 Lumber Rack on Wheels**



**210 Lumber Rack on Wheels, Short**



FORMERLY BARNES & BARNES TIE SAWMILL - SIMSBORO, LA 9/7/2020-10/22/2020

**LOT #**

**211 Lumber Rack on Wheels**



**212 Lumber Rack on Wheels**



**213 Lumber Rack on Wheels**



**214 (22+/-) Metal Rollers Near Woodmizer Portable Sawmill**



**215 (30 +/-) Metal Rollers Near Pacific Trail Mfg Saw**



**216 Oregon Chain Saw Sharpener, Model 520-120;**  
Includes Stand and Chainsaw Chain  
Blades



**217 County Line Shop Fan, 5 1/2' +/- L**



**250 CONCLUSION OF THE PIECEMEAL OFFERINGS**

This signifies the conclusion of the piecemeal offerings (auction lots 1-217). 30 minutes will pass until the BULK OFFER (auction lot # 300) begins to close. The cumulative of the piecemeal bids will be compared to the final bulk bid amount and the Bankruptcy Trustee will have the option to choose which way the property is to be sold.

ATTENTION: The rolling stock (auction lots 3700-5300) is NOT included in the piecemeal or the bulk offering and will be sold separate & apart from the piecemeal & bulk offerings.



**LOT #**

**300 "SOUTH 40" COMPLETE SAWMILL PACKAGE W/ REAL ESTATE**

This offering includes the entire "South 40" sawmill operation "turn key" as a package including real estate, sawmill equipment & personal property. This offering does NOT include the rolling stock. This offer will be held in competition with the cumulative of the piecemeal bids (LOTS 1-217). The Trustee will have the option to choose which way the the property is to be sold.



**BULK OFFERING DISCRIPTION:**

Auction lots 1-217 only . Consisting of:  
REAL ESTATE: 40+/- Acres Located at 5235 Highway 563, Simsboro, Louisiana a/k/a SW 1/4 of SW of Section 27, Township 18 North, Range 4 West, Lincoln Parish, Louisiana. Lincoln Parish Parcel No. 27184563001.

SAWMILL EQUIPMET: Original Crosstie Sawmill; Headrig Bandmill, 42" to 50" Diameter Logs, 18' to 20' Length, 43,000 to 45,000 Board Feet/ 8-Hour Shift, To Include:

Precision Husky Model # P-848H 8" x 48' Log Diameter Range Rosser Head Debarker S/N D608, 50 hp; 8' to 20' Log Lengths, 15" d x 16" Barking Head with Log Kickers, Log Rotation Rolls; Hydraulic Power unit; Operators Cab; and Elevated Stand

Custom Built 25' 5-Strand Log Deck w/ Log Turner on Elevated Steel Platform w/ Wood Decking

Filer & Stowell 3-Knee Straight Line Tilted Log Carriage, Estimated 70' +/- Travel, Hydraulic Power Unit, 30hp; Set works; Operators Cab; Thomas Industrial Controls Control System; and Corley Model 386 Shotgun Feedworks, with 2 Hydraulic Power Units. 150 hp Each Knockums Model 3640 7' Single Cut Upright Bandmill; w/ Hydraulic Power Unit; and 6' +/- L Box Chain Conveyor Crosby 30' +/- L Infeed to Gang Saw Live Roller Bed; w/ Outfeed Belt Conveyor Crosby Model 11196-R 48" +/- Board Edger; with Roller Infeed; and Outfeed Conveyor, includes 10' +/- Belt Conveyor Located Below



**FORMERLY BARNES & BARNES TIE SAWMILL - SIMSBORO, LA 9/7/2020-10/22/2020**

**LOT #**

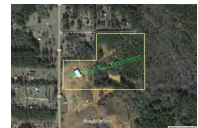
Custom Built 50' +/- L Transfer Roller  
Conveyor; Infeed to Gang Saw  
Crosby Model 30 30' +/- Gang Saw, S/N  
N36851; with Roller Infeed and Outfeed  
Custom Built 12' +/- L Feed to Trimmer  
Saw Transfer Deck; 5-Strand; w/  
Unscrambler  
Newman-Whitney Model KNO-24 8-Head  
Drop Saw Trimmer  
Custom Built 25' +/- L Trimmer to Grading  
Chain Transfer Deck; 5-Strand  
Custom Built 90' +/- 5-Strand Grading  
Chain  
Custom Built 16 +/- 'L Live Transfer  
Deck; 3-Strand  
Custom Built 40' +/- Live Transfer Deck,  
4-Strand  
Tie Stacking and Cut Off System; w/  
4-Strand Log Deck, 40'L +/- 90' +/- L  
Toller Conveyor, and (12) Skate wheel  
Roll-Offs, 18' +/- L; Saw Removed.  
(2) Cutler-Hammer Section Switchboards  
(10) A-B Quality Allen-Bradley Breaker  
Boxes  
Cutler-Hammer Breaker And Toshiba  
TD-013AC TD Series Solid State Motor  
Control (Labeled As Control For Gang Saw  
Motor)  
Breakers; Starters; Electrical Components  
In Group; GE & Cutler-Hammer  
Assorted Breakers, Breaker Boxes &  
Electrical Components in Group  
Lot of Square D Breaker Boxes And  
Breakers In Group  
Precision Husky 30' +/- L Vibrating  
Oversize Chip Belt Conveyor; On Concrete  
Supports  
Precision Husky 60" Chipper w/ Platform  
and Conveyor  
Ingersoll-Rand Model R90i-A125 Rotary  
Screw Air Compressor, S/N  
V2986U16279, (2016), 125 hp; Enclosed  
Cabinet  
Precision Husky Model 6x6 6'x6' +/-  
Shaker Screen, S/N 2462  
Custom Built 119' +/- L Trough Clean Out  
Drag Chain Conveyor  
On-Site Built 45' +/- Belt Conveyor from  
Bandsaw to Vibrator  
Custom Built 35' +/- L x 17" +/- W Incline  
Outfeed Conveyor Trough  
Custom Built 40' +/- L x 17" +/- W Incline  
Clean Out Box Chain Conveyor  
Custom Built 36" +/- W x 15' +/- L Belt

**LOT #**

Conveyor; Conveyor to Vibrator  
Custom Built 19" +/- W x 21' +/- L  
Incline Trough Belt Conveyor  
Custom Built 19" +/- W x 26' +/- L  
Trough Belt Conveyor  
Open Air Steel Building 3,200 square feet  
Open Air Steel Building 2,160 square feet  
Open Air Steel Building 1,326 square feet  
Open Air Steel Building 840 square feet  
Custom Built 6'x20' Lumber Dip Tank  
Fairbanks Model PL T6010 12'W x 70'L  
Truck Scales  
For a complete list of items included in this  
offering view auction lots 1-217

**301 "NORTH 20" COMPLETE SAWMILL PACKAGE W/  
REAL ESTATE**

This offering includes the entire "North  
20" sawmill operation as a package  
including real estate. 20.05 +/- Acre  
Sawmill Facility Consisting of: A  
Construction Mat Timber Sawmill: Hurdle  
Machine Works Circular Blade Sawmill,  
constructed 2018 -2019, 20" Diameter  
Logs, 18' to 20' Length, To Include:  
American Pioneer 40'L 3-Strand Infeed  
Log Deck; On Elevated Steel Platform  
Hurdle Machine Works Cross Tie Circular  
Mill; To Include:  
Hurdle Machine Works Model Magnum  
3-Knee Tong Dog Log Carriage; Estimated  
70' Travel; with Log Turner; and Carriage  
Drive System  
Setworks  
Hurdle Machine Works 48"D Blade  
Circular Mill; Hydraulic Driven  
Operators Cab  
18"W x 30'L Belt Conveyor  
Hydraulic Power Units  
Steel Platform; with Catwalks  
30'L Barn Sweep Dust Belt Chain  
Conveyor; (2) Sections, Incline  
American Pioneer 30" Board Edger, 30 hp;  
with 12"W x 30'L Belt Feed Conveyor  
30"W x 40'L Live Roller Bed; with  
Elevated Steel Platform  
18"W x 70'L Vibrating Belt Conveyor; In  
Trough  
" Custom Built 4' x 30' Tie Bay; Rack  
Type  
Precision Husky Model 65X17 Chipper,  
S/N Unknown; On Elevated Stand  
Precision Husky Model 6X6 Shaker  
Screen, S/N S2815  
18"W x 24'L Incline Chip Belt Conveyor



**FORMERLY BARNES & BARNES TIE SAWMILL - SIMSBORO, LA 9/7/2020-10/22/2020**

**LOT #**

18"W x 40'L Incline Sawdust Belt Conveyor  
Ingersoll-Rand Model R55i-A125 Rotary Screw Air Compressor, S/N VK5583U19066, (2019), 75 hp; Enclosed Cabinet  
Lot of Electrical Distribution Equipment for New Mill, To Include: Breaker Boxes; Control Panels; Electrical Cabinets; Drives; All Small Motors; Main Power Disconnect; etc.; (Installed 2019)  
Model RC-2018-014 30"W x 20'L Live Roller Bed, (2018); Elevated; with Positive End Stop; Integral Center Powered Roller Conveyor, 30"W x 20'L; Dual Log Kickers; (2) Left/Right Skate-Wheel Transfer Decks; and Hydraulic Power Unit.  
18"W x 50'L Trough Belt Conveyor  
24"W x 30'L Trough Belt Conveyor  
Custom Built 40'L Transfer Deck; 4-Strand; with Wood Decking

**3700 Volvo Model L90H Wheel Loader**  
S/N 90HCDS623220, (2015); Powered by Volvo D6J Diesel Engine, Enclosed ROPS, Forks



**3800 Volvo Model L90H Wheel Loader**  
S/N 90HAOS623518, (2016) Powered by Volvo D6J Diesel Engine, Enclosed ROPS, Forks



**3900 Volvo Model L90H Wheel Loader**  
S/N 90HTDS623185; (2015); Powered by Volvo D6J Diesel Engine, Enclosed ROPS  
- No attachments included



**4000 Volvo Model L110F Wheel Loader**  
S/NVCEL110FH00005164, (2011); Powered by D7ELBE3 Diesel Engine, Enclosed ROPS, Forks, 7,658 Hours



**LOT #**

**4100 Case Model 850M Crawler Dozer**  
S/N NFDC80053, (2016); Model FPT F4HFE613F Diesel Engine, Enclosed ROPS; with 12' +/- Blade



**4200 Volvo Model G940 Motor Grader**  
S/N VCE0G940J0S525029, (2011); Powered by D7E Diesel Engine, Enclosed ROPS, with 14' +/- Moldboard; and 6-Shank Scarifier



**4300 Prentice Model 2280 Mobile Log Loader**  
S/N 2280PR63127, (2010); 5,305 +/- Hours Indicated, Cummins QSB6.7 Diesel Engine; with 29' +/- Knuckle Boom; Grapple; Cab; Mounted On Big John Model SP300 Self-Propelled Mover



**4400 RTC Cut Off Saw attachment**



**4500 Prentice Model 210E Mobile Log Loader**  
S/N 210P53455, (1996); Cummins 5.9 Diesel Engine; w/ Knuckle Boom; Grapple; Cab; Mounted On Big John Self-Propelled Mover



**4600 Volvo Bucket Attachment Model #82041**  
S/N 18693 92 Cubic Yard +/- Capacity Hydraulic Hoses, 115"L +/-



**4700 Volvo Bucket Attachment Model #93856**  
S/N 617502, 101" L +/-



FORMERLY BARNES & BARNES TIE SAWMILL - SIMSBORO, LA 9/7/2020-10/22/2020

**LOT #**

---

**4700a Volvo Loader Bucket - Model 81560**

Serial No. 85007-45022



**4800 Volvo Bucket Attachment Model #86304**

S/N 623185, 105" L +/-



**4800a Loader Forks - Model: CFHD-L70F**



**4900 Wicker Loader Grapple**

Model #WSGOL900



**5000 Loader Grapple Attachment**

S/N 7024-129, 103" L +/-



**5000a Volvo Bucket Attachment Model #86407**

S/N 62223, 102" L +/-



**5000b Shop Built Fork Lift Bucket**



**5300 Wood-Mizer Model LT40 Hydraulic Portable Sawmill**

S/N 456C62416GNJK3983, (2016); 36" +/- Max Log Diameter, 28" +/- Max Width Cut, 21' +/- Max Length; with SimpleSet Setworks; and Built-In Trailer, 526 hours +/-

