



NEW! Sivoia[®] QS Wireless Cellular shades

Battery powered, wire-free, remote controlled shades



Cellular shades from Lutron®

Lutron cellular shades offer incredible value at an affordable price, backed by the quality of the Lutron brand.

When you choose Lutron cellular shades, you'll add convenience, enhance your décor, and save energy—all at the touch of a button.



Easy integration

Sivoia® QS Wireless cellular shades are the only cellular shades available today that integrate seamlessly with a whole-home control system. This gives you the ability to control your shades in conjunction with your lights—and transform your space for any activity.

Shown above: Double-cell light-filtering fabric in Storm

Add convenience

- Adjust shades with a wire-free handheld or wall-mounted remote control from anywhere in the room
- Set multiple shades in motion with a single button press, making it easy to open and close hard-to-reach window treatments
- Shades are very quiet and won't disrupt any activity in the space



Enhance your décor

- Choose from a variety of fabrics, colors, styles, and textures
- Distinguished pleats offer a crisp, clean look that is both soft and durable
- Cord-free operation makes this a safe solution for homes with young children or pets



Save energy

- Air pockets trap heat to provide superior insulation for enhanced energy efficiency
- Lowering shades in summer helps reduce cooling costs
- Raising shades in winter to let the sun in and then lowering them at night helps trap the day's heat, reducing heating costs



Transform your home with cellular shades

Lutron® cellular shades are ideal for enhancing your lifestyle in any room in your home.

Master bath



In your bathroom, cellular shades are perfect for providing privacy while you get into the tub...

...and then you can open them to enjoy the view.

Nursery



In your nursery, bright daylight can be disruptive...

...lowering cellular shades and dimming lights with a Lutron dimmer will help create a peaceful environment so your baby will sleep soundly.

Sunroom



In your sunroom, midday rays can really turn up the heat...



...a single button press lowers shades, filtering daylight and leaving you with the soft glow of the sun's rays.

Foyer



In that hard-to-reach foyer window...

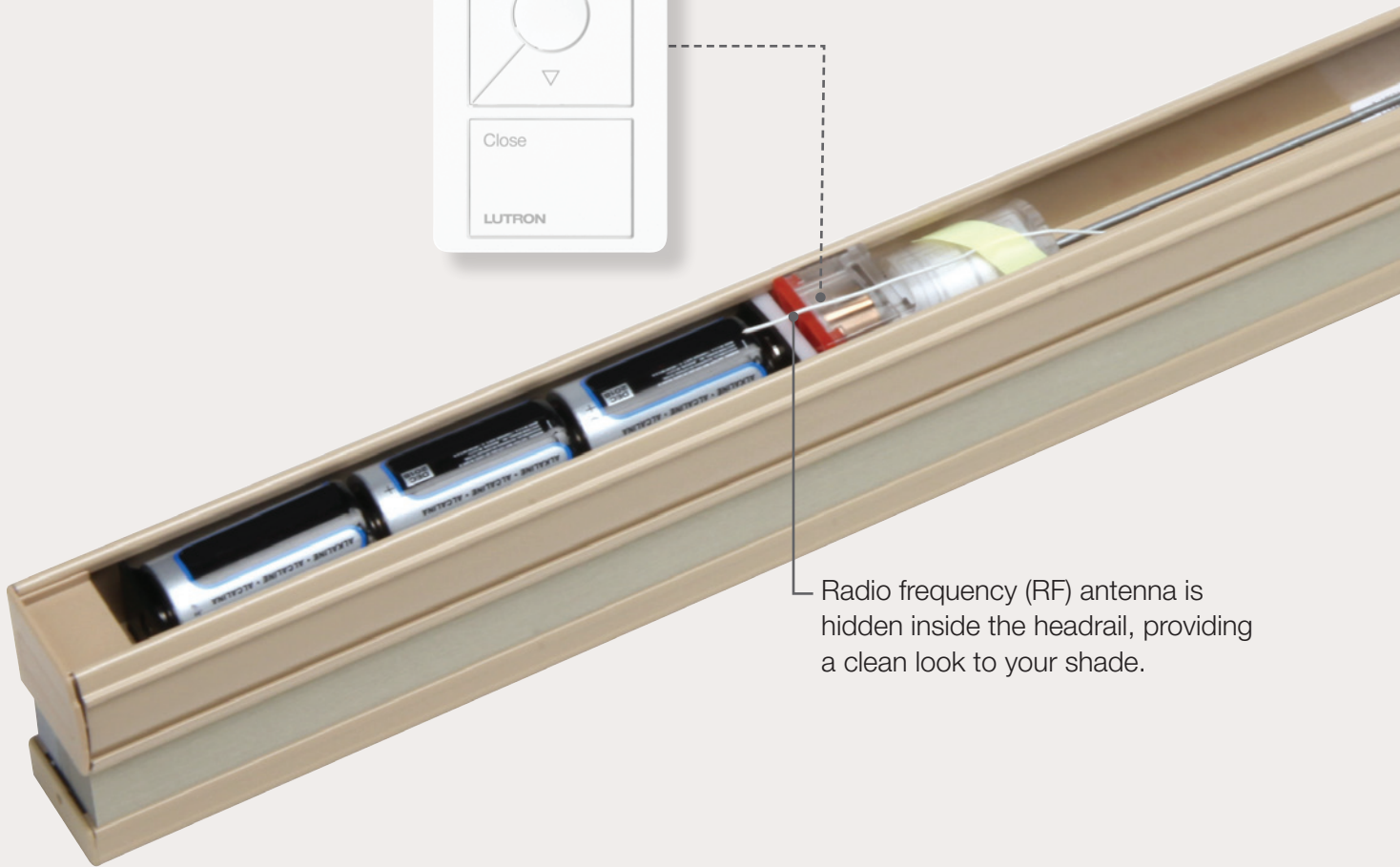


...cellular shades are perfect for providing privacy and blocking direct sunlight.

Technology behind the transformation

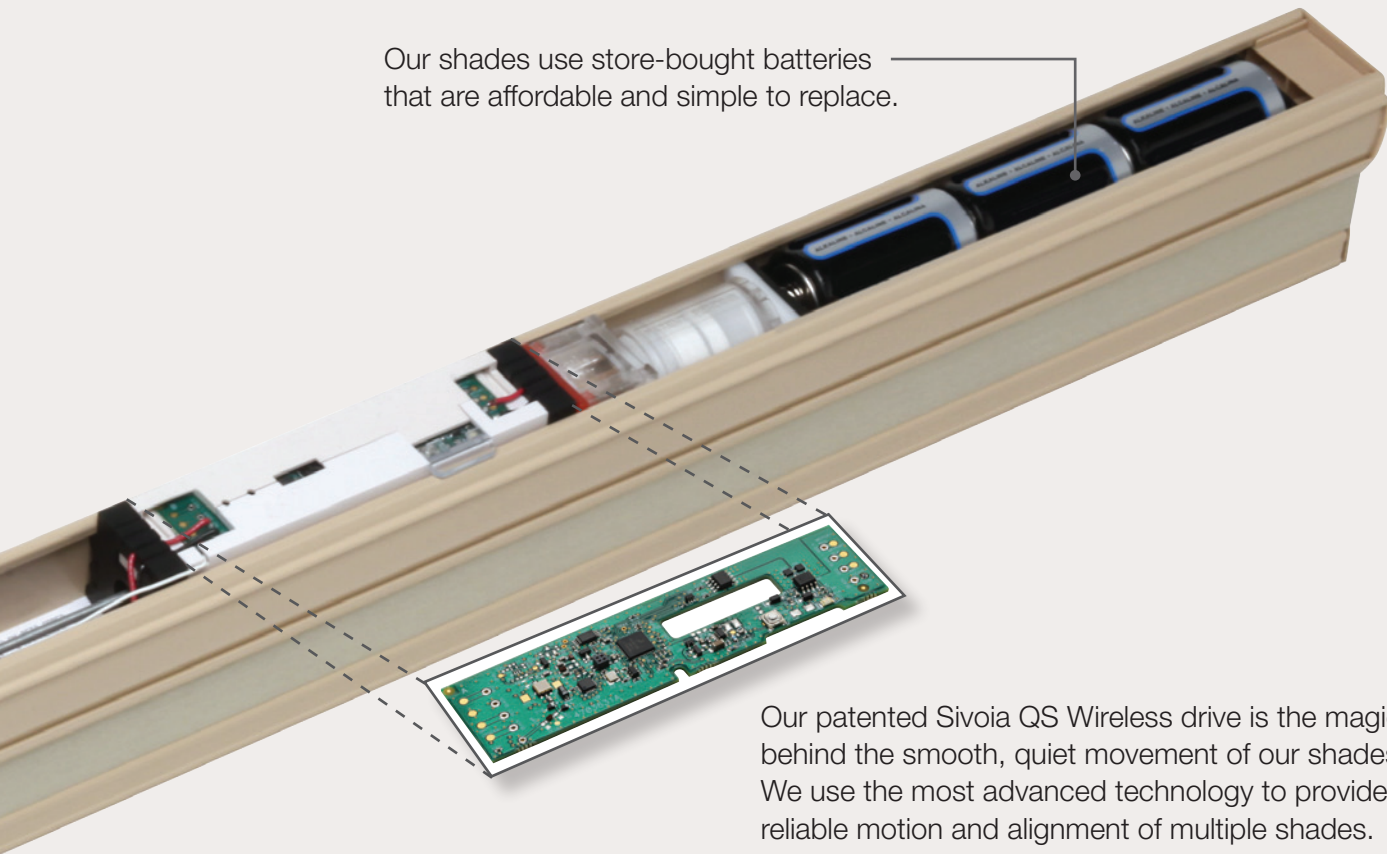
Lutron® cellular shades are powered by a Sivoia® QS Wireless drive, including Triathlon™ power technology. This technology utilizes a hybrid drive design and ultra-efficient standby power, which extends the battery life to 3 years*.

Our remote controls move the shades using our patented Clear Connect™ radio frequency technology, which ensures reliable performance without interference from other household devices.



Radio frequency (RF) antenna is hidden inside the headrail, providing a clean look to your shade.

* 3-year battery life based on 2 up and 2 down movements per day assuming a 3 ft. wide by 5 ft. tall shade using light-filtering fabric. Battery life can vary between 2 to 5 years depending on shade size and fabric selection.



Our shades use store-bought batteries that are affordable and simple to replace.

Our patented Sivoia QS Wireless drive is the magic behind the smooth, quiet movement of our shades. We use the most advanced technology to provide reliable motion and alignment of multiple shades.

The Lutron Difference

When you choose Lutron, you're choosing a manufacturer with a history of innovation as well as the leader in the automated shading category since 2000. So when you purchase our Sivoia QS Wireless cellular shades, you can be confident you're getting a quality product, backed by our commitment to reliability (we offer 24/7 customer support).

Sivoia QS Wireless cellular shades offer:

- Incredible value and a beautiful solution at an affordable price
- Cutting edge technology

Choosing your cellular shade

Style

Fabric

Control

Power

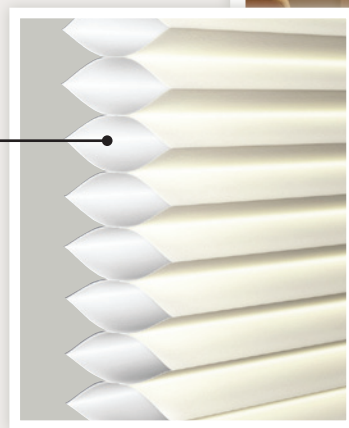
Step 1: Select your pleat style

Lutron® cellular shades are as beautiful as they are functional. They come in varying opacities—from sheer and translucent to room darkening—allowing you to achieve the optimal level of light control and privacy for your space.

In addition, all cellular shade fabrics have a white backing that acts as a reflector to help keep your space cool and comfortable. With these dual-sided fabrics you can give each room a signature look while maintaining a uniform appearance from the outside.

Single-cell light-filtering shades

- Transform harsh daylight into a soft, filtered glow
- Provide varying levels of privacy

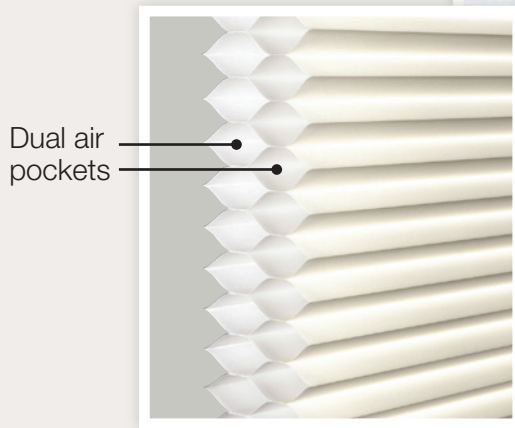


Single air pocket

Sheer fabric in Satin

Double-cell light-filtering shades

- Allow some light to filter into the space
- Save energy by trapping heat between air pockets in cells



Double-cell light-filtering fabric in Storm

Single-cell room-darkening shades

- Block light from entering into a space
- Create complete privacy from the outside
- Aluminum lining provides added energy efficiency



Single-cell room-darkening fabric in Mist

Choosing your cellular shade

Style

Fabric

Control

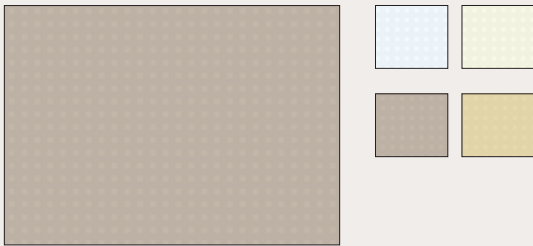
Power

Step 2: Select your fabric

We offer cellular shades in a variety of colors and textures, making it easy to complement your style and taste.

Fabric sample binders are available from your authorized Lutron® shades provider or sales representative. For more information please visit www.lutron.com/cellularfabrics or call 1.888.LUTRON1.

Point bonded - Light-filtering or room darkening



Point bonded provides a clean traditional look.

Light-filtering R Value* = 3.5

Room-darkening R Value = 4.3

ST

Crush - Light-filtering

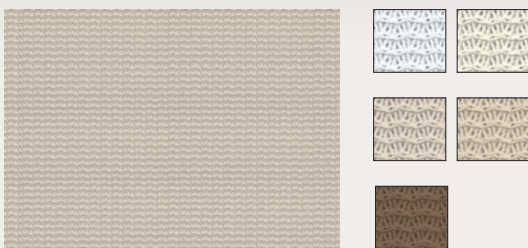


Crush pairs texture with a luxurious, rich look.

R Value = 3.4

CU

Sheer - Light-filtering

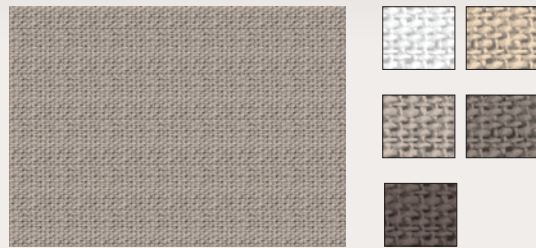


Sheer offers an airy, relaxed feel.

R Value = 0.7

PS CU

Woven - Light-filtering

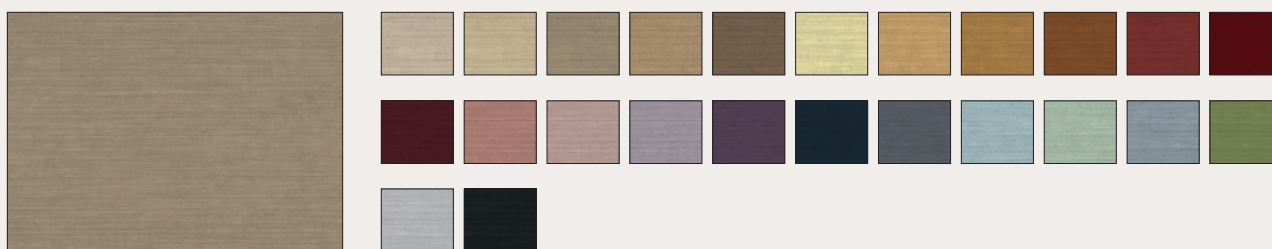


Woven is clean and sophisticated with a hint of linen.

R Value = 0.9

CU

Spun lace- Light-filtering or room darkening



Spun lace provides a classic, warm feel, with light-filtering and room-darkening options.

Single-cell light-filtering R Value = 3.5

Double-cell light-filtering R Value = 3.6

Room-darkening R Value = 4.3

PS **CU**

Please note that due to the printing process, the color of material swatches may not be exact. When selecting, please refer to a physical sample available in the Lutron cellular shade fabric sample binder.

Stocking categories:

ST Stocked - Classic fabrics, neutral colors, precision-molded vinyl headrails

PS Premium Stocked - Premium fabrics, neutral colors, precision-molded vinyl headrails

CU Custom - Deluxe and specialty fabrics, variety of colors, premium aluminum headrails

Lead time is currently 10 business days (plus shipping) from receipt of order.

Available shade sizes:

Width: 15 in. to 82 in.

Height: 12 in. to 82 in.

Maximum shade size: approximately 47 sq. ft. (varies based on fabric selection)

Choosing your cellular shade

Style

Fabric

Control

Power

Step 3: Select system or shade-only control

Our cellular shades are offered as a shade-only solution or as part of a whole-home control system.

System control

- Ideal for use with a Lutron® whole-home control system, such as RadioRA® 2 or HomeWorks® QS
- Create preset scenes that allow you to control shades, adjust the temperature and turn on/off small appliances at the touch of a button
- Utilize a variety of control options for your shades as part of one of our whole-home control systems (see options at right)
- Integrate your shades with a 3rd party control system, such as a touch screen or universal remote



Shade-only control

- Control shades without a home control system via Pico® wireless controls
- Pico wireless controls can be hand-held, mounted to the wall, or used on a tabletop pedestal
- Ideal for use with a single shade or multiple shades within a room in your home



Control options



Pico wireless controls

Wireless controls allow you to control your shades from the comfort of your couch. You can use Pico wireless controls with a shade-only solution or a whole-home control system.



Keypads and single-room scene controls

You can control system-integrated shades from wall-mounted or tabletop keypads or controls. With one button press, you can dim your lights, adjust the temperature and turn on/off small appliances, creating an environment that's both comfortable and energy-efficient. Keypads are available in a wide array of colors and finishes to match any décor.



Mobile devices

If you have a system, you can control your shades from your mobile device with a Lutron® app—as well as lights, temperature, and small appliances—even when you're away from home.



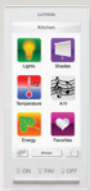
Timeclocks (Time of day control)

A timeclock works in conjunction with a home control system to automatically raise or lower your shades based on programmed times. For example, shades can be set to lower automatically every day at noon to block harsh sunlight and protect interiors and furnishings.



3rd-party integration

Shade control (as well as lights) can be integrated with other manufacturer's systems, such as security, for another level of control. If the security system is triggered, shades can open and interior and/or exterior lights can flash.



Lutron dynamic keypad

You can use the Lutron dynamic keypad, which is part of a system, to adjust shades, lights, temperature, and audio/visual equipment from one convenient location.

Cellular shade options

Style

Fabric

Control

Power

Step 4: Select power options

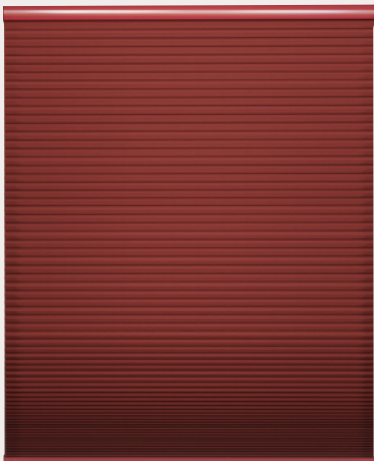
Power options for Lutron® cellular shades include battery, plug-in, and power panels.

Batteries

Batteries are a cost-effective option that guarantee easy installation and maintenance. Battery powered shades are the best choice for retrofit applications that require a wire-free solution (such as French doors).

Sivoia® QS Wireless cellular shades use Triathlon™ power technology to achieve typical battery life of over 3 years.

(3-year battery life based on 2 up and 2 down movements per day assuming a 3 ft. wide by 5 ft. tall shade using light-filtering fabric. Battery life can vary between 2 to 5 years depending on shade size and fabric selection.)

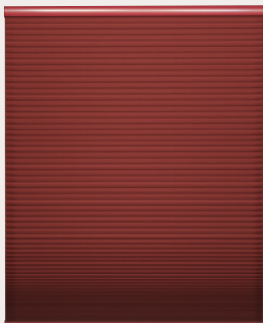


Alkaline batteries

Shade width	Number of batteries
Between 15 and 26 in.	8 AA-Cell (Available late November 2011)
Between 26 and 32 in.	4 D-Cell
Greater than 32 in.	6 D-Cell

Plug-in

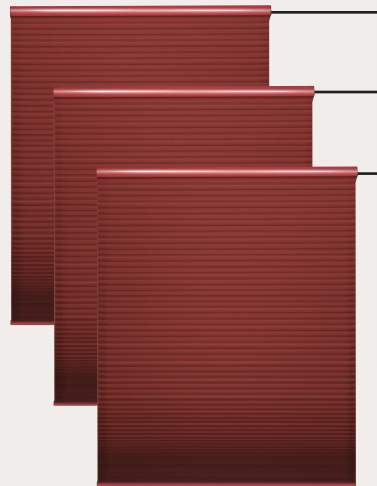
A plug-in power supply is convenient when you're installing a cellular shade that is hard to reach, making it difficult for you to change the battery.



Plug-in power supply

Power panels

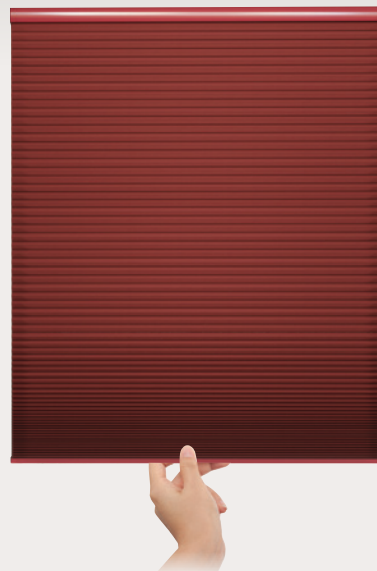
Panel-powered shades are ideal when you want to power multiple shades (one panel powers up to 10 shades) and can be used for new construction or retrofit applications. Shades are wired directly to the panel and don't use batteries.



Power panel

Manual options available

Manual options are available to coordinate with all of your automated cellular shades. Contact your local Lutron shades dealer or sales representative for details.



www.lutron.com

World Headquarters 1.610.282.3800
Technical Support Center 1.800.523.9466 (Available 24/7)
Customer Service 1.888.LUTRON1
Email: shadinginfo@lutron.com



© 08/2011 Lutron Electronics Co., Inc. P/N 367-2208 REV A

