



**Product Selection Guide**

Size and Performance Data ..... V-DH-2

Sound Transmission Class and Outdoor-Indoor Transmission Class ..... V-DH-2

Features and Options..... V-DH-3

Glazing Performance ..... V-DH-4

Standard Traditional Grille Breakpoints..... V-DH-6

Size Tables ..... V-DH-7

    Single Vent and Fixed Units ..... V-DH-7

    2-Wide Vent Units..... V-DH-8

    3-Wide Vent Units..... V-DH-9

Special Sizes ..... V-DH-10

Design Data ..... V-DH-11

    Single Vent Units ..... V-DH-11

    Single Fixed Units..... V-DH-13

    2-Wide Vent Units..... V-DH-14

    3-Wide Vent Units..... V-DH-16

Detailed Product Descriptions..... V-DH-17

Unit Sections ..... V-DH-18

    3-1/4" Replacement Frame ..... V-DH-19

    4-3/16" New Construction Frame ..... V-DH-21

**Document Navigation Tips:**

Items listed in the table of contents above are active links that will take you to the corresponding page.

The Pella logo on each page is a link back to this table of contents.

Bookmarks are also included in this PDF document and are available as an additional navigation option.

The information published in this document is believed to be accurate at the time of publication. However, because we are constantly working to improve our products, specifications are subject to change without notice. Consult your local Pella representative for up-to-date product information.

Microsoft and Microsoft Word are registered trademarks of Microsoft Corp.

Pella® 150 Series vinyl window products are intended only for use less than 40 feet above ground level.



# Pella® 150 Series Double-Hung Window

## Size and Performance Data

	Replacement Frame		New Construction Frame	
	Standard	High Performance	Standard	High Performance
<b>Sizes</b>				
Standard Sizes	●	●	●	●
Special Sizes Available Built on 1/8" Increments	●	●	●	●
<b>Frames</b>				
Replacement Frame for 3-1/4" Frame Depth	●	●	–	–
Nail Fin with J-Channel for 2-9/16" Wall Depth	–	–	●	●
Nail Fin for 2-9/16" Wall Depth	–	–	●	●
Nail Fin with J-Channel for 4-9/16" Wall Depth	–	–	●	●
Interior Primed Wood Jamb Extension (2-9/16" wall depth only)	–	–	●	●
<b>Performance <sup>1</sup></b>				
Meets or Exceeds AAMA/WDMA Ratings	H-R20 – R35 Hallmark Certified	H-R50 Hallmark Certified	H-R20 – R35 Hallmark Certified	H-R50 Hallmark Certified
Air Infiltration (cfm/ft <sup>2</sup> of frame @ 1.57 psf wind pressure.)	0.24	0.24	0.24	0.24
Design Pressure	20 – 35 psf	50 psf	20 – 35 psf	50 psf
Water Penetration Resistance	3.0 – 5.25 psf	7.5 psf	3.0 – 5.25 psf	7.5 psf
Forced Entry Resistance (Minimum Security Grade)	10	10	10	10
Maximum Operating Force (lbs) (Initiate Motion/Maintain Motion)	21	21	21	21

### Sound Transmission Class and Outdoor-Indoor Transmission Class

Series	Frame Size Tested <sub>2</sub>	Glazing System			STC Rating	OITC Rating
		Overall Glazing Thickness	Exterior Glass Thickness	Interior Glass Thickness		
3-1/4" Frame Depth Replacement Double-Hung - Dual Pane Insulating Glass	36" x 60"	3/4"	3 mm	3mm	26	22
	36" x 60"	3/4"	2.5 mm	2.5 mm	25	22

Pella® 150 Series vinyl window products are intended only for use less than 40 feet above ground level.

(-) = Not Available

(1) Published performance data is for single unit only. See Design Data pages in this section for specific product performance class and grade values.

(2) ASTM E 1425 defines standard sizes for acoustical testing. Ratings achieved at that size are representative of all sizes of the same configuration.



East Region Only



# Pella® 150 Series Double-Hung Window

## Features and Options

	Replacement Frame	New Construction Frame
<b>Frame</b>		
Perimeter Foam	S	–
<b>Glazing (3/4" Insulating Glass)</b>		
<b>Glazing Type</b>		
Dual-pane insulating glass	S	S
<b>Insulated Glass Options / Low-E Types</b>		
Advanced Low-E	O	O
NaturalSun Low-E	O	O
SunDefense™ Low-E	O	O
Clear (no Low-E coating)	S	S
<b>Additional Glass Options</b>		
Annealed glass	S	S
Tempered glass	O	O
Obscure glass <sub>1</sub>	O	O
Bronze Tinted glass	O	O
<b>Gas Fill / High Altitude</b>		
Argon	O	O
<b>Interior / Exterior Color</b>		
White	S	S
Almond	O	O
Fossil	O	O
<b>Grilles-Between-the-Glass</b>		
<b>Grille Types</b>		
3/4" Contour	O	O
<b>Grille Patterns</b>		
Traditional	O	O
Prairie	O	O
Top Row	O	O
<b>Screens</b>		
InView™ screens	S	S

S = Standard; O = Optional  
 (1) Contact your local Pella sales representative for current offering.



East Region Only



# Pella® 150 Series Double-Hung Window

## Glazing Performance - Total Unit

Glass Thickness	Type of Glazing	NFRC Certified Product #	Glass (mm)		Gap Fill	Performance Values <sup>1</sup>				Shaded Areas Meet ENERGY STAR® Performance Criteria in Zones Shown						
			Ext.	Int.		U-Factor	SHGC	VLT	CR	U. S.			Canada <sup>2</sup>			
										Zone			ER	Zone		
<b>Vent 3-1/4" Frame Depth - Standard Performance</b>										N	NC	SC	S			CA
3/4"	Clear IG	PEL-N-108-00130-00001	2.5	2.5	Air	0.47	0.60	0.62	43							
	with Grilles-between-the-glass	PEL-N-108-00130-00002				0.47	0.54	0.55	43							
3/4"	Advanced Low-E IG	PEL-N-108-00132-00001	2.5	2.5	Air	0.33	0.29	0.53	53							
	with Grilles-between-the-glass	PEL-N-108-00132-00002				0.33	0.26	0.47	53							
3/4"	Advanced Low-E IG	PEL-N-108-00135-00001	2.5	2.5	Argon	0.30	0.28	0.53	56		NC					
	with Grilles-between-the-glass	PEL-N-108-00135-00002				0.30	0.26	0.47	56		NC					
3/4"	NaturalSun Low-E IG	PEL-N-108-00131-00001	2.5	2.5	Air	0.34	0.50	0.60	53							
	with Grilles-between-the-glass	PEL-N-108-00131-00002				0.34	0.44	0.53	53							
3/4"	NaturalSun Low-E IG	PEL-N-108-00138-00001	2.5	2.5	Argon	0.30	0.49	0.60	56	N						
	with Grilles-between-the-glass	PEL-N-108-00138-00002				0.30	0.44	0.53	56	N						
3/4"	SunDefense™ Low-E IG	PEL-N-108-00133-00001	2.5	2.5	Air	0.33	0.21	0.49	54					S		
	with Grilles-between-the-glass	PEL-N-108-00133-00002				0.33	0.19	0.44	54					S		
3/4"	SunDefense™ Low-E IG	PEL-N-108-00136-00001	2.5	2.5	Argon	0.30	0.21	0.49	57		NC	SC	S			
	with Grilles-between-the-glass	PEL-N-108-00136-00002				0.30	0.19	0.44	57		NC	SC	S			
3/4"	Bronze Advanced Low-E IG	PEL-N-108-00128-00001	3	3	Argon	0.30	0.28	0.39	56		NC					
	with Grilles-between-the-glass	PEL-N-108-00128-00002				0.30	0.25	0.35	56		NC	SC	S			
<b>Vent 4-3/16" Frame Depth - Standard Performance</b>																
3/4"	Clear IG	PEL-N-109-00177-00001	2.5	2.5	Air	0.47	0.60	0.62	42							
	with Grilles-between-the-glass	PEL-N-109-00177-00002				0.47	0.53	0.55	42							
3/4"	Advanced Low-E IG	PEL-N-109-00179-00001	2.5	2.5	Air	0.33	0.28	0.53	52							
	with Grilles-between-the-glass	PEL-N-109-00179-00002				0.33	0.26	0.47	52							
3/4"	Advanced Low-E IG	PEL-N-109-00182-00001	2.5	2.5	Argon	0.30	0.28	0.53	55		NC					
	with Grilles-between-the-glass	PEL-N-109-00182-00002				0.30	0.25	0.47	55		NC	SC	S			
3/4"	NaturalSun Low-E IG	PEL-N-109-00178-00001	2.5	2.5	Air	0.34	0.49	0.60	52							
	with Grilles-between-the-glass	PEL-N-109-00178-00002				0.34	0.44	0.53	52							
3/4"	NaturalSun Low-E IG	PEL-N-109-00185-00001	2.5	2.5	Argon	0.30	0.49	0.60	55	N						
	with Grilles-between-the-glass	PEL-N-109-00185-00002				0.30	0.44	0.53	55	N						
3/4"	SunDefense™ Low-E IG	PEL-N-109-00180-00001	2.5	2.5	Air	0.33	0.21	0.49	53					S		
	with Grilles-between-the-glass	PEL-N-109-00180-00002				0.33	0.19	0.44	53					S		
3/4"	SunDefense™ Low-E IG	PEL-N-109-00183-00001	2.5	2.5	Argon	0.30	0.21	0.49	56		NC	SC	S			
	with Grilles-between-the-glass	PEL-N-109-00183-00002				0.30	0.19	0.44	56		NC	SC	S			
3/4"	Bronze Advanced Low-E IG	PEL-N-109-00175-00001	3	3	Argon	0.30	0.28	0.39	56		NC					
	with Grilles-between-the-glass	PEL-N-109-00175-00002				0.30	0.25	0.35	56		NC	SC	S			

R-Value = 1/U-Factor  
 SHGC = Solar Heat Gain Coefficient  
 VLT % = Visible Light Transmission  
 CR = Condensation Resistance

(1) Glazing performance values are calculated based on NFRC 100, NFRC 200 and NFRC 500. ENERGY STAR® values are updated to 2016 (Version 6) criteria.  
 (2) The values shown are based on Canada's updated ENERGY STAR® 2020 initiative.

For more information, see the ENERGY STAR guidelines.

Performance values on this page reflect units with standard performance. For performance values on units with a performance upgrade option, please contact Pella Corporation.

Size may affect the performance values





### Grille Profiles

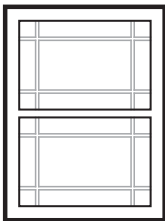
#### Grilles-Between-the-Glass



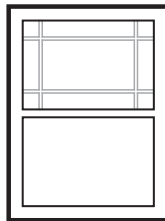
3/4" Contour Grille

### Grille Patterns

#### Prairie Lite Patterns



9-Lite Prairie

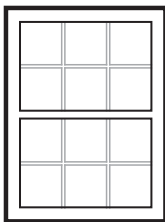


6-Lite Prairie

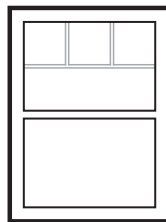
#### Prairie

- Specify upper or both sash.
- Approximately 4" from edge of sash to center of bar.
- Minimum actual glass is 13".

#### Other Available Patterns



Traditional



Top Row

#### Traditional

- Specify upper or both sash.
- Specify number of lites.
- Grilles must be equally divided on visible glass.
- Minimum 6" x 6" center-to-center.

#### Top Row

- Standard visible glass to separator bar must be  $\leq 1/2$  upper actual glass.

For standard grille breakpoints, see size tables.

Maximum frame height for 25 Series is 72".



East Region Only



# Pella® 150 Series Double-Hung Window

## Standard Traditional Grille Breakpoints

FRAME HEIGHT		FRAME WIDTH			
		1-Wide	2-Wide	3-Wide	4-Wide
		< 17-1/2"	17-1/2" to 27-1/2"	27-5/8" to 44-3/8"	44-1/2" to 48"
1-High	23" to 29-3/8"				
2-High	29-1/2" to 65-1/2"				
3-High	65-5/8" to 71-1/2"				
4-High	71-5/8" to 78"				



East Region Only



# Pella® 150 Series Double-Hung Window

## Size Tables - 4-3/16" New Construction Frame

### 1-Wide Vent

	(610) (597)	(710) (699)	(762) (749)	(813) (800)	(914) (902)	(965) (953)	(1 016) (1 003)
Opening	2' 0"	2' 4"	2' 6"	2' 8"	3' 0"	3' 2"	3' 4"
Frame	23 1/2"	27 1/2"	29 1/2"	31 1/2"	35 1/2"	37 1/2"	39 1/2"
3' 0"	2-0/3-0	2-4/3-0	2-6/3-0	2-8/3-0	3-0/3-0	3-2/3-0	3-4/3-0
3' 2"	2-0/3-2	2-4/3-2	2-6/3-2	2-8/3-2	3-0/3-2	3-2/3-2	3-4/3-2
3' 6"	2-0/3-6	2-4/3-6	2-6/3-6	2-8/3-6	3-0/3-6	3-2/3-6	3-4/3-6
3' 10"	2-0/3-10	2-4/3-10	2-6/3-10	2-8/3-10	3-0/3-10	3-2/3-10	3-4/3-10
4' 0"	2-0/4-0	2-4/4-0	2-6/4-0	2-8/4-0	3-0/4-0	3-2/4-0	3-4/4-0
4' 4"	2-0/4-4	2-4/4-4	2-6/4-4	2-8/4-4	3-0/4-4	3-2/4-4	3-4/4-4
4' 6"	2-0/4-6	2-4/4-6	2-6/4-6	2-8/4-6	3-0/4-6	3-2/4-6	3-4/4-6
5' 0"	2-0/5-0	2-4/5-0	2-6/5-0	2-8/5-0	3-0/5-0	3-2/5-0	3-4/5-0
5' 2"	2-0/5-2	2-4/5-2	2-6/5-2	2-8/5-2	3-0/5-2	3-2/5-2	3-4/5-2
5' 6"	2-0/5-6	2-4/5-6	2-6/5-6	2-8/5-6	3-0/5-6	3-2/5-6	3-4/5-6
6' 0"	2-0/6-0	2-4/6-0	2-6/6-0	2-8/6-0	3-0/6-0	3-2/6-0	3-4/6-0

### Fixed Units

	(1 219) (1 207)	(1 372) (1 359)	(1 524) (1 511)
Opening	4' 0"	4' 6"	5' 0"
Frame	47 1/2"	53 1/2"	59 1/2"
3' 0"	4-0/3-0	4-6/3-0	5-0/3-0
3' 2"	4-0/3-2	4-6/3-2	5-0/3-2
3' 6"	4-0/3-6	4-6/3-6	5-0/3-6
3' 10"	4-0/3-10	4-6/3-10	5-0/3-10
4' 0"	4-0/4-0	4-6/4-0	5-0/4-0
4' 4"	4-0/4-4	4-6/4-4	5-0/4-4
4' 6"	4-0/4-6	4-6/4-6	5-0/4-6
5' 0"	4-0/5-0	4-6/5-0	5-0/5-0
5' 2"	4-0/5-2	4-6/5-2	5-0/5-2
5' 6"	4-0/5-6	4-6/5-6	5-0/5-6
6' 0"	4-0/6-0	4-6/6-0	5-0/6-0

#### Egress Notes:

Check all applicable local codes for emergency egress requirements.

E = Window meets minimum clear opening of 24" height, 20" width, and 5.7 ft<sup>2</sup>.

E1 = Window meets minimum clear opening of 24" height, 20" width, and 5.0 ft<sup>2</sup>.

See Design Data pages in this section for clear opening dimensions.



East Region Only



# Pella® 150 Series Double-Hung Window

## Size Tables - 4-3/16" New Construction Frame - Composite with Integral Mullion

### 2-Wide Vent Composites with Integral Mullion

	(1 219) (1 207)	(1 422) (1 410)	(1 524) (1 511)	(1 626) (1 613)	(1 829) (1 816)	(1 930) (1 918)	(2 032) (2 019)
Opening	4' 0"	4' 8"	5' 0"	5' 4"	6' 0"	6' 4"	6' 8"
Frame	47 1/2"	55 1/2"	59 1/2"	63 1/2"	71 1/2"	75 1/2"	79 1/2"
(914) (902)							
(965) (953)							
(1 067) (1 054)							
(1 160) (1 156)							
(1 219) (1 207)							
(1 321) (1 308)							
(1 372) (1 359)							
(1 524) (1 511)							
(1 575) (1 562)							
(1 676) (1 664)							
(1 829) (1 816)							

#### Egress Notes:

Check all applicable local codes for emergency egress requirements.

E = Window meets minimum clear opening of 24" height, 20" width, and 5.7 ft<sup>2</sup>.

E1 = Window meets minimum clear opening of 24" height, 20" width, and 5.0 ft<sup>2</sup>.

See Design Data pages in this section for clear opening dimensions.



East Region Only





# Pella® 150 Series Double-Hung Window

## Size Tables - 4-3/16" New Construction Frame - Composite with Integral Mullion

### 3-Wide Vent Composites with Integral Mullion

	(1 829) (1 816)	(2 134) (2 121)	(2 438) (2 426)	(2 438) (2 426)	(2 743) (2 731)		
Opening	6' 0"	7' 0"	7' 6"	8' 0"	9' 0"		
Frame	71 1/2"	83 1/2"	89 1/2"	95 1/2"	107 1/2"		
(914) (902)	3' 0"	35 1/2"	6-0/3-0	7-0/3-0	7-6/3-0	8-0/3-0	9-0/3-0
(965) (953)	3' 2"	37 1/2"	6-0/3-2	7-0/3-2	7-6/3-2	8-0/3-2	9-0/3-2
(1 067) (1 054)	3' 6"	41 1/2"	6-0/3-6	7-0/3-6	7-6/3-6	8-0/3-6	9-0/3-6
(1 160) (1 156)	3' 10"	45 1/2"	6-0/3-10	7-0/3-10	7-6/3-10	8-0/3-10	9-0/3-10
(1 219) (1 207)	4' 0"	47 1/2"	6-0/4-0	7-0/4-0	7-6/4-0	8-0/4-0	9-0/4-0
(1 321) (1 308)	4' 4"	51 1/2"	6-0/4-4	7-0/4-4	7-6/4-4	8-0/4-4	9-0/4-4
(1 372) (1 359)	4' 6"	53 1/2"	6-0/4-6	7-0/4-6	7-6/4-6	8-0/4-6	9-0/4-6
(1 524) (1 511)	5' 0"	59 1/2"	6-0/5-0	7-0/5-0	7-6/5-0	8-0/5-0	9-0/5-0
(1 575) (1 562)	5' 2"	61 1/2"	6-0/5-2	7-0/5-2	7-6/5-2	8-0/5-2	9-0/5-2
(1 676) (1 664)	5' 6"	65 1/2"	6-0/5-6	7-0/5-6	7-6/5-6	8-0/5-6	9-0/5-6
(1 829) (1 816)	6' 0"	71 1/2"	6-0/6-0	7-0/6-0	7-6/6-0	8-0/6-0	9-0/6-0

**Egress Notes:**

Check all applicable local codes for emergency egress requirements.  
 E = Window meets minimum clear opening of 24" height, 20" width, and 5.7 ft<sup>2</sup>.  
 E1 = Window meets minimum clear opening of 24" height, 20" width, and 5.0 ft<sup>2</sup>.  
 See Design Data pages in this section for clear opening dimensions.



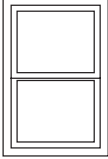
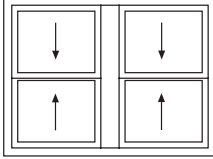
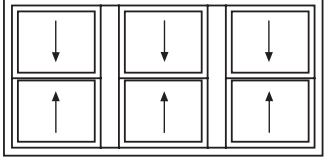
East Region Only



# Pella® 150 Series Double-Hung Window

## Special Sizes and Dimensions

Replacement frame double-hung windows are made to order in 1/8" increments to fit the opening. Listed below are the minimum and maximum size ranges.

Single Vent	2-Wide Vent Composite	3-Wide Vent Composite
		
<p><b>MINIMUM</b> 14-1/2" W x 23-1/2" H (368 x 597)</p> <p><b>MAXIMUM</b> 48 ft<sup>2</sup> (4.46 m<sup>2</sup>) 48" W x 78" H (1 219 x 1 981)</p>	<p><b>MINIMUM</b> 29-1/2" W x 23-1/2" H (749 x 597)</p> <p><b>MAXIMUM</b> 48 ft<sup>2</sup> (4.46 m<sup>2</sup>) W &lt; 96-1/2" (2 451) H ≤ 78" (1 981)</p>	<p><b>MINIMUM</b> 44-1/2" W x 23-1/2" H (1 130 x 597)</p> <p><b>MAXIMUM</b> 48 ft<sup>2</sup> (4.46 m<sup>2</sup>) W &lt; 108" (2 743) H ≤ 78" (1 981)</p>

### General Notes:

- To convert areas to square meters (m<sup>2</sup>), multiply square feet by 0.0929.
- Rough Opening = Frame Dimension + 1/4".
- Keep frame dimensions to the nearest 1/8" increment.
- If glass width/height ratio is > 5:1, then unit must be tempered.
- 2-Wide High Performance limited to 71-1/2" x 71-1/2".
- Bronze annealed glass is limited to 22 ft<sup>2</sup> glass size (actual glass).
- Slope Sill Adaptor—14° angle.

### Full Screen:

- Full Screen—If unit frame dimensions are >39" wide or > 53-1/2" high, spreader bar is included.
- Two (2) plungers FH ≤ 51-1/2"
- Four (4) plungers FH > 51-1/2"

### Miscellaneous Formulas

	Single Vent	2-Wide Vent	3-Wide Vent
Visible Glass	VGW = FW - 6-1/4"	VGW = (FW ÷ 2) - 6-3/4"	VGW = (FW ÷ 3) - 7-1/4"
	VGH = (FH ÷ 2) - 4"	VGH = (FH ÷ 2) - 4"	VGH = (FH ÷ 2) - 4"
Actual Glass	AGW = FW - 5-1/4"	AGW = (FW ÷ 2) - 5-1/2"	AGW = (FW ÷ 3) - 5-9/16"
	AGH = (FH ÷ 2) - 3"	AGH = (FH ÷ 2) - 3"	AGH = (FH ÷ 2) - 3"
Clear Opening	Equally Divided = (FW - 4-5/8) x (FH ÷ 2 - 5-11/16) ÷ 144	Equally Divided = (FW ÷ 2 - 4-7/8) x (FH ÷ 2 - 5-11/16) ÷ 144	Equally Divided = (FW ÷ 3 - 4-15/16) x (FH ÷ 2 - 5-11/16) ÷ 144

### KEY:

AGW = Actual Glass Width  
 AGH = Actual Glass Height  
 FW = Frame Width  
 FH = Frame Height  
 VGW = Visible Glass Width  
 VGH = Visible Glass Height



East Region Only

Pella® 150 Series vinyl window products are intended only for use less than 40 feet above ground level.



# Pella® 150 Series Double-Hung Window

## Design Data

1-Wide Vent - 4-3/16" New Construction Frame											
Unit	Egress	Frame (Inches)		Clear Opening (Vent Units Only)			Visible Glass Ft <sup>2</sup>	Standard Glass Thickness (mm)		Performance Class & Grade <sup>1</sup>	
		Width	Height	Width	Height	Ft <sup>2</sup>		Annealed	Tempered	Standard	Upgrade <sup>2</sup>
2-0/3-0		23-1/2	35-1/2	18-7/8	12-1/16	1.5	3.3	2.5	3	R35	R50
2-0/3-2		23-1/2	37-1/2	18-7/8	13-1/16	1.7	3.5	2.5	3	R35	R50
2-0/3-6		23-1/2	41-1/2	18-7/8	15-1/16	1.9	4.0	2.5	3	R35	R50
2-0/3-10		23-1/2	45-1/2	18-7/8	17-1/16	2.2	4.5	2.5	3	R35	R50
2-0/4-0		23-1/2	47-1/2	18-7/8	18-1/16	2.3	4.7	2.5	3	R35	R50
2-0/4-4		23-1/2	51-1/2	18-7/8	20-1/16	2.6	5.2	2.5	3	R35	R50
2-0/4-6		23-1/2	53-1/2	18-7/8	21-1/16	2.7	5.5	2.5	3	R35	R50
2-0/5-0		23-1/2	59-1/2	18-7/8	24-1/16	3.1	6.2	2.5	3	R35	R50
2-0/5-2		23-1/2	61-1/2	18-7/8	25-1/16	3.2	6.4	2.5	3	R35	R50
2-0/5-6		23-1/2	65-1/2	18-7/8	27-1/16	3.5	6.9	2.5	3	R35	R50
2-0/6-0		23-1/2	71-1/2	18-7/8	30-1/16	3.9	7.6	2.5	3	R35	R50
2-4/3-0		27-1/2	35-1/2	22-7/8	12-1/16	1.9	4.1	2.5	3	R35	R50
2-4/3-2		27-1/2	37-1/2	22-7/8	13-1/16	2.0	4.4	2.5	3	R35	R50
2-4/3-6		27-1/2	41-1/2	22-7/8	15-1/16	2.3	4.9	2.5	3	R35	R50
2-4/3-10		27-1/2	45-1/2	22-7/8	17-1/16	2.7	5.5	2.5	3	R35	R50
2-4/4-0		27-1/2	47-1/2	22-7/8	18-1/16	2.8	5.8	2.5	3	R35	R50
2-4/4-4		27-1/2	51-1/2	22-7/8	20-1/16	3.1	6.4	2.5	3	R35	R50
2-4/4-6		27-1/2	53-1/2	22-7/8	21-1/16	3.3	6.7	2.5	3	R35	R50
2-4/5-0		27-1/2	59-1/2	22-7/8	24-1/16	3.8	7.6	2.5	3	R35	R50
2-4/5-2		27-1/2	61-1/2	22-7/8	25-1/16	3.9	7.9	2.5	3	R35	R50
2-4/5-6		27-1/2	65-1/2	22-7/8	27-1/16	4.3	8.5	2.5	3	R35	R50
2-4/6-0		27-1/2	71-1/2	22-7/8	30-1/16	4.7	9.4	2.5	3	R35	R50
2-6/3-0		29-1/2	35-1/2	24-7/8	12-1/16	2.0	4.4	2.5	3	R35	R50
2-6/3-2		29-1/2	37-1/2	24-7/8	13-1/16	2.2	4.8	2.5	3	R35	R50
2-6/3-6		29-1/2	41-1/2	24-7/8	15-1/16	2.6	5.4	2.5	3	R35	R50
2-6/3-10		29-1/2	45-1/2	24-7/8	17-1/16	2.9	6.1	2.5	3	R35	R50
2-6/4-0		29-1/2	47-1/2	24-7/8	18-1/16	3.1	6.4	2.5	3	R35	R50
2-6/4-4		29-1/2	51-1/2	24-7/8	20-1/16	3.4	7.0	2.5	3	R35	R50
2-6/4-6		29-1/2	53-1/2	24-7/8	21-1/16	3.6	7.3	2.5	3	R35	R50
2-6/5-0		29-1/2	59-1/2	24-7/8	24-1/16	4.1	8.3	2.5	3	R35	R50
2-6/5-2		29-1/2	61-1/2	24-7/8	25-1/16	4.3	8.6	2.5	3	R35	R50
2-6/5-6		29-1/2	65-1/2	24-7/8	27-1/16	4.6	9.3	2.5	3	R35	R50
2-6/6-0	E1	29-1/2	71-1/2	24-7/8	30-1/16	5.1	10.3	2.5	3	R35	R50

1 of 2

### Egress Notes:

Check all applicable local codes for emergency egress requirements.

E = Window meets minimum clear opening of 24" height, 20" width, and 5.7 ft<sup>2</sup>.

E1 = Window meets minimum clear opening of 24" height, 20" width, and 5.0 ft<sup>2</sup>.

Pella® 150 Series vinyl window products are intended only for use less than 40 feet above ground level.

(1) Maximum performance when glazed with the appropriate glass thickness.

(2) Indicates performance with additional steel reinforcement in sash cavity.

To convert areas to square meters (m<sup>2</sup>), multiply square feet by 0.0929



East Region Only



# Pella® 150 Series Double-Hung Window

## Design Data

1-Wide Vent - 4-3/16" New Construction Frame											
Unit	Egress	Frame (Inches)		Clear Opening (Vent Units Only)			Visible Glass Ft²	Standard Glass Thickness (mm)		Performance Class & Grade <sup>1</sup>	
		Width	Height	Width	Height	Ft²		Annealed	Tempered	Standard	Upgrade <sup>2</sup>
2-8/3-0		31-1/2	35-1/2	26-7/8	12-1/16	2.2	4.8	2.5	3	R35	R50
2-8/3-2		31-1/2	37-1/2	26-7/8	13-1/16	2.4	5.2	2.5	3	R35	R50
2-8/3-6		31-1/2	41-1/2	26-7/8	15-1/16	2.8	5.9	2.5	3	R35	R50
2-8/3-10		31-1/2	45-1/2	26-7/8	17-1/16	3.1	6.6	2.5	3	R35	R50
2-8/4-0		31-1/2	47-1/2	26-7/8	18-1/16	3.3	6.9	2.5	3	R35	R50
2-8/4-4		31-1/2	51-1/2	26-7/8	20-1/16	3.7	7.6	2.5	3	R35	R50
2-8/4-6		31-1/2	53-1/2	26-7/8	21-1/16	3.9	8.0	2.5	3	R35	R50
2-8/5-0		31-1/2	59-1/2	26-7/8	24-1/16	4.5	9.0	2.5	3	R35	R50
2-8/5-2		31-1/2	61-1/2	26-7/8	25-1/16	4.6	9.4	2.5	3	R35	R50
2-8/5-6	E1	31-1/2	65-1/2	26-7/8	27-1/16	5.0	10.1	2.5	3	R35	R50
2-8/6-0	E1	31-1/2	71-1/2	26-7/8	30-1/16	5.6	11.1	2.5	3	R35	R50
3-0/3-0		35-1/2	35-1/2	30-7/8	12-1/16	2.5	5.6	2.5	3	R35	R50
3-0/3-2		35-1/2	37-1/2	30-7/8	13-1/16	2.8	6.0	2.5	3	R35	R50
3-0/3-6		35-1/2	41-1/2	30-7/8	15-1/16	3.2	6.8	2.5	3	R35	R50
3-0/3-10		35-1/2	45-1/2	30-7/8	17-1/16	3.6	7.6	2.5	3	R35	R50
3-0/4-0		35-1/2	47-1/2	30-7/8	18-1/16	3.8	8.0	2.5	3	R35	R50
3-0/4-4		35-1/2	51-1/2	30-7/8	20-1/16	4.3	8.8	2.5	3	R35	R50
3-0/4-6		35-1/2	53-1/2	30-7/8	21-1/16	4.5	9.2	2.5	3	R35	R50
3-0/5-0	E1	35-1/2	59-1/2	30-7/8	24-1/16	5.1	10.5	2.5	3	R35	R50
3-0/5-2	E1	35-1/2	61-1/2	30-7/8	25-1/16	5.3	10.9	2.5	3	R35	R50
3-0/5-6	E	35-1/2	65-1/2	30-7/8	27-1/16	5.8	11.7	2.5	3	R35	R50
3-0/6-0	E	35-1/2	71-1/2	30-7/8	30-1/16	6.4	12.9	3	3	R35	R50
3-2/3-0		37-1/2	35-1/2	32-7/8	12-1/16	2.7	6.0	2.5	3	R25	R50
3-2/3-2		37-1/2	37-1/2	32-7/8	13-1/16	2.9	6.4	2.5	3	R25	R50
3-2/3-6		37-1/2	41-1/2	32-7/8	15-1/16	3.4	7.3	2.5	3	R25	R50
3-2/3-10		37-1/2	45-1/2	32-7/8	17-1/16	3.9	8.1	2.5	3	R25	R50
3-2/4-0		37-1/2	47-1/2	32-7/8	18-1/16	4.1	8.6	2.5	3	R25	R50
3-2/4-4		37-1/2	51-1/2	32-7/8	20-1/16	4.5	9.4	2.5	3	R25	R50
3-2/4-6		37-1/2	53-1/2	32-7/8	21-1/16	4.8	9.9	2.5	3	R25	R50
3-2/5-0	E1	37-1/2	59-1/2	32-7/8	24-1/16	5.5	11.2	2.5	3	R25	R50
3-2/5-2	E	37-1/2	61-1/2	32-7/8	25-1/16	5.7	11.6	2.5	3	R25	R50
3-2/5-6	E	37-1/2	65-1/2	32-7/8	27-1/16	6.1	12.5	3	3	R25	R50
3-2/6-0	E	37-1/2	71-1/2	32-7/8	30-1/16	6.8	13.8	3	3	R25	R50
3-4/3-0		39-1/2	35-1/2	34-7/8	12-1/16	2.9	6.3	2.5	3	R25	R50
3-4/3-2		39-1/2	37-1/2	34-7/8	13-1/16	3.1	6.8	2.5	3	R25	R50
3-4/3-6		39-1/2	41-1/2	34-7/8	15-1/16	3.6	7.7	2.5	3	R25	R50
3-4/3-10		39-1/2	45-1/2	34-7/8	17-1/16	4.1	8.7	2.5	3	R25	R50
3-4/4-0		39-1/2	47-1/2	34-7/8	18-1/16	4.3	9.1	2.5	3	R25	R50
3-4/4-4		39-1/2	51-1/2	34-7/8	20-1/16	4.8	10.0	2.5	3	R25	R50
3-4/4-6		39-1/2	53-1/2	34-7/8	21-1/16	5.1	10.5	2.5	3	R25	R50
3-4/5-0	E	39-1/2	59-1/2	34-7/8	24-1/16	5.8	11.9	2.5	3	R25	R50
3-4/5-2	E	39-1/2	61-1/2	34-7/8	25-1/16	6.0	12.4	3	3	R25	R50
3-4/5-6	E	39-1/2	65-1/2	34-7/8	27-1/16	6.5	13.3	3	3	R25	R50
3-4/6-0	E	39-1/2	71-1/2	34-7/8	30-1/16	7.2	14.7	3	3	R25	R50

**Egress Notes:**  
 Check all applicable local codes for emergency egress requirements.  
 E = Window meets minimum clear opening of 24" height, 20" width, and 5.7 ft².  
 E1 = Window meets minimum clear opening of 24" height, 20" width, and 5.0 ft².

Pella® 150 Series vinyl window products are intended only for use less than 40 feet above ground level.



East Region Only

(1) Maximum performance when glazed with the appropriate glass thickness.  
 (2) Indicates performance with additional steel reinforcement in sash cavity.  
 To convert areas to square meters (m²), multiply square feet by 0.0929



# Pella® 150 Series Double-Hung Window

## Design Data

### 1-Wide Fixed - 4-3/16" New Construction Frame

Unit	Frame (Inches)		Visible Glass Ft <sup>2</sup>	Standard Glass Thickness (mm)		Performance Class & Grade <sup>(1)</sup>
	Width	Height		Annealed	Tempered	
4-0/2-0	47-1/2	23-1/2	5.4	2.5	3	R50
4-0/3-0	47-1/2	35-1/2	8.9	2.5	3	R50
4-0/3-2	47-1/2	37-1/2	9.5	2.5	3	R50
4-0/3-6	47-1/2	41-1/2	10.7	2.5	3	R50
4-0/3-10	47-1/2	45-1/2	11.9	2.5	3	R50
4-0/4-0	47-1/2	47-1/2	12.5	2.5	3	R50
4-0/4-4	47-1/2	51-1/2	13.6	2.5	3	R50
4-0/4-6	47-1/2	53-1/2	14.2	2.5	3	R50
4-0/5-0	47-1/2	59-1/2	16.0	2.5	3	R50
4-0/5-2	47-1/2	61-1/2	16.6	2.5	3	R25
4-0/5-6	47-1/2	65-1/2	17.8	2.5	3	R25
4-0/6-0	47-1/2	71-1/2	19.5	2.5	3	R25
4-6/2-0	53-1/2	23-1/2	6.2	2.5	3	R50
4-6/3-0	53-1/2	35-1/2	10.2	2.5	3	R50
4-6/3-2	53-1/2	37-1/2	10.9	2.5	3	R50
4-6/3-6	53-1/2	41-1/2	12.2	3	3	R50
4-6/3-10	53-1/2	45-1/2	13.6	3	3	R50
4-6/4-0	53-1/2	47-1/2	14.2	3	3	R50
4-6/4-4	53-1/2	51-1/2	15.6	3	3	R50
4-6/4-6	53-1/2	53-1/2	16.3	3	3	R50
4-6/5-0	53-1/2	59-1/2	18.3	3	3	R50
4-6/5-2	53-1/2	61-1/2	18.9	3	3	R25
4-6/5-6	53-1/2	65-1/2	20.3	3	3	R25
4-6/6-0	53-1/2	71-1/2	22.3	3	3	R25
5-0/2-0	59-1/2	23-1/2	6.9	3	3	R50
5-0/3-0	59-1/2	35-1/2	11.5	3	3	R50
5-0/3-2	59-1/2	37-1/2	12.2	3	3	R50
5-0/3-6	59-1/2	41-1/2	13.7	3	3	R50
5-0/3-10	59-1/2	45-1/2	15.2	3	3	R50
5-0/4-0	59-1/2	47-1/2	16.0	3	3	R50
5-0/4-4	59-1/2	51-1/2	17.5	3	3	R50
5-0/4-6	59-1/2	53-1/2	18.3	3	3	R50
5-0/5-0	59-1/2	59-1/2	20.5	3	3	R50
5-0/5-2	59-1/2	61-1/2	21.3	3	3	R25
5-0/5-6	59-1/2	65-1/2	22.8	3	3	R25
5-0/6-0	59-1/2	71-1/2	25.1	3	3	R25

Pella® 150 Series vinyl window products are intended only for use less than 40 feet above ground level.

(1) Maximum performance when glazed with the appropriate glass thickness.  
To convert areas to square meters (m<sup>2</sup>), multiply square feet by 0.0929



East Region Only



# Pella® 150 Series Double-Hung Window

## Design Data

2-Wide Vent - 4-3/16" New Construction Frame											
Unit	Egress	Frame (Inches)		Clear Opening (Vent Units Only)			Visible Glass Ft <sup>2</sup>	Standard Glass Thickness (mm)		Performance Class & Grade <sup>1</sup>	
		Width	Height	Width	Height	Ft <sup>2</sup>		Annealed	Tempered	Standard	Upgrade <sup>2</sup>
4-0/3-0		47-1/2	35-1/2	18-7/8	12-1/16	1.5	6.5	2.5	3	R35	R50
4-0/3-2		47-1/2	37-1/2	18-7/8	13-1/16	1.7	7.0	2.5	3	R35	R50
4-0/3-6		47-1/2	41-1/2	18-7/8	15-1/16	1.9	7.9	2.5	3	R35	R50
4-0/3-10		47-1/2	45-1/2	18-7/8	17-1/16	2.2	8.9	2.5	3	R35	R50
4-0/4-0		47-1/2	47-1/2	18-7/8	18-1/16	2.3	9.3	2.5	3	R35	R50
4-0/4-4		47-1/2	51-1/2	18-7/8	20-1/16	2.6	10.3	2.5	3	R35	R50
4-0/4-6		47-1/2	53-1/2	18-7/8	21-1/16	2.7	10.7	2.5	3	R35	R50
4-0/5-0		47-1/2	59-1/2	18-7/8	24-1/16	3.1	12.2	2.5	3	R35	R50
4-0/5-2		47-1/2	61-1/2	18-7/8	25-1/16	3.2	12.6	2.5	3	R35	R50
4-0/5-6		47-1/2	65-1/2	18-7/8	27-1/16	3.5	13.6	2.5	3	R35	R50
4-0/6-0		47-1/2	71-1/2	18-7/8	30-1/16	3.9	15.0	2.5	3	R35	R50
4-8/3-0		55-1/2	35-1/2	22-7/8	12-1/16	1.9	8.0	2.5	3	R35	R50
4-8/3-2		55-1/2	37-1/2	22-7/8	13-1/16	2.0	8.6	2.5	3	R35	R50
4-8/3-6		55-1/2	41-1/2	22-7/8	15-1/16	2.3	9.8	2.5	3	R35	R50
4-8/3-10		55-1/2	45-1/2	22-7/8	17-1/16	2.7	10.9	2.5	3	R35	R50
4-8/4-0		55-1/2	47-1/2	22-7/8	18-1/16	2.8	11.5	2.5	3	R35	R50
4-8/4-4		55-1/2	51-1/2	22-7/8	20-1/16	3.1	12.7	2.5	3	R35	R50
4-8/4-6		55-1/2	53-1/2	22-7/8	21-1/16	3.3	13.3	2.5	3	R35	R50
4-8/5-0		55-1/2	59-1/2	22-7/8	24-1/16	3.8	15.0	2.5	3	R35	R50
4-8/5-2		55-1/2	61-1/2	22-7/8	25-1/16	3.9	15.6	2.5	3	R35	R50
4-8/5-6		55-1/2	65-1/2	22-7/8	27-1/16	4.3	16.8	2.5	3	R35	R50
4-8/6-0		55-1/2	71-1/2	22-7/8	30-1/16	4.7	18.5	2.5	3	R35	R50
5-0/3-0		59-1/2	35-1/2	24-7/8	12-1/16	2.0	8.8	2.5	3	R35	R50
5-0/3-2		59-1/2	37-1/2	24-7/8	13-1/16	2.2	9.4	2.5	3	R35	R50
5-0/3-6		59-1/2	41-1/2	24-7/8	15-1/16	2.6	10.7	2.5	3	R35	R50
5-0/3-10		59-1/2	45-1/2	24-7/8	17-1/16	2.9	12.0	2.5	3	R35	R50
5-0/4-0		59-1/2	47-1/2	24-7/8	18-1/16	3.1	12.6	2.5	3	R35	R50
5-0/4-4		59-1/2	51-1/2	24-7/8	20-1/16	3.4	13.9	2.5	3	R35	R50
5-0/4-6		59-1/2	53-1/2	24-7/8	21-1/16	3.6	14.5	2.5	3	R35	R50
5-0/5-0		59-1/2	59-1/2	24-7/8	24-1/16	4.1	16.5	2.5	3	R35	R50
5-0/5-2		59-1/2	61-1/2	24-7/8	25-1/16	4.3	17.1	2.5	3	R35	R50
5-0/5-6		59-1/2	65-1/2	24-7/8	27-1/16	4.6	18.4	2.5	3	R35	R50
5-0/6-0	E1	59-1/2	71-1/2	24-7/8	30-1/16	5.1	20.3	2.5	3	R35	R50

1 of 2

### Egress Notes:

Check all applicable local codes for emergency egress requirements.

E = Window meets minimum clear opening of 24" height, 20" width, and 5.7 ft<sup>2</sup>.

E1 = Window meets minimum clear opening of 24" height, 20" width, and 5.0 ft<sup>2</sup>.

Pella® 150 Series vinyl window products are intended only for use less than 40 feet above ground level.

(1) Maximum performance when glazed with the appropriate glass thickness.

(2) Indicates performance with additional steel reinforcement in sash cavity.

To convert areas to square meters (m<sup>2</sup>), multiply square feet by 0.0929



East Region Only



# Pella® 150 Series Double-Hung Window

## Design Data

2-Wide Vent - 4-3/16" New Construction Frame											
Unit	Egress	Frame (Inches)		Clear Opening (Vent Units Only)			Visible Glass Ft <sup>2</sup>	Standard Glass Thickness (mm)		Performance Class & Grade <sup>1</sup>	
		Width	Height	Width	Height	Ft <sup>2</sup>		Annealed	Tempered	Standard	Upgrade <sup>2</sup>
5-4/3-0		63-1/2	35-1/2	26-7/8	12-1/16	2.2	9.5	2.5	3	R35	R50
5-4/3-2		63-1/2	37-1/2	26-7/8	13-1/16	2.4	10.2	2.5	3	R35	R50
5-4/3-6		63-1/2	41-1/2	26-7/8	15-1/16	2.8	11.6	2.5	3	R35	R50
5-4/3-10		63-1/2	45-1/2	26-7/8	17-1/16	3.1	13.0	2.5	3	R35	R50
5-4/4-0		63-1/2	47-1/2	26-7/8	18-1/16	3.3	13.7	2.5	3	R35	R50
5-4/4-4		63-1/2	51-1/2	26-7/8	20-1/16	3.7	15.1	2.5	3	R35	R50
5-4/4-6		63-1/2	53-1/2	26-7/8	21-1/16	3.9	15.8	2.5	3	R35	R50
5-4/5-0		63-1/2	59-1/2	26-7/8	24-1/16	4.5	17.9	2.5	3	R35	R50
5-4/5-2		63-1/2	61-1/2	26-7/8	25-1/16	4.6	18.6	2.5	3	R35	R50
5-4/5-6	E <sub>1</sub>	63-1/2	65-1/2	26-7/8	27-1/16	5.0	20.0	2.5	3	R35	R50
5-4/6-0	E <sub>1</sub>	63-1/2	71-1/2	26-7/8	30-1/16	5.6	22.0	2.5	3	R35	R50
6-0/3-0		71-1/2	35-1/2	30-7/8	12-1/16	2.5	11.1	2.5	3	R35	R50
6-0/3-2		71-1/2	37-1/2	30-7/8	13-1/16	2.8	11.9	2.5	3	R35	R50
6-0/3-6		71-1/2	41-1/2	30-7/8	15-1/16	3.2	13.5	2.5	3	R35	R50
6-0/3-10		71-1/2	45-1/2	30-7/8	17-1/16	3.6	15.1	2.5	3	R35	R50
6-0/4-0		71-1/2	47-1/2	30-7/8	18-1/16	3.8	15.9	2.5	3	R35	R50
6-0/4-4		71-1/2	51-1/2	30-7/8	20-1/16	4.3	17.5	2.5	3	R35	R50
6-0/4-6		71-1/2	53-1/2	30-7/8	21-1/16	4.5	18.3	2.5	3	R35	R50
6-0/5-0	E <sub>1</sub>	71-1/2	59-1/2	30-7/8	24-1/16	5.1	20.7	2.5	3	R35	R50
6-0/5-2	E <sub>1</sub>	71-1/2	61-1/2	30-7/8	25-1/16	5.3	21.5	2.5	3	R35	R50
6-0/5-6	E	71-1/2	65-1/2	30-7/8	27-1/16	5.8	23.2	2.5	3	R35	R50
6-0/6-0	E	71-1/2	71-1/2	30-7/8	30-1/16	6.4	25.6	3	3	R35	R50
6-4/3-0		75-1/2	35-1/2	32-7/8	12-1/16	2.7	11.9	2.5	3	R25	–
6-4/3-2		75-1/2	37-1/2	32-7/8	13-1/16	2.9	12.8	2.5	3	R25	–
6-4/3-6		75-1/2	41-1/2	32-7/8	15-1/16	3.4	14.5	2.5	3	R25	–
6-4/3-10		75-1/2	45-1/2	32-7/8	17-1/16	3.9	16.2	2.5	3	R25	–
6-4/4-0		75-1/2	47-1/2	32-7/8	18-1/16	4.1	17.1	2.5	3	R25	–
6-4/4-4		75-1/2	51-1/2	32-7/8	20-1/16	4.5	18.8	2.5	3	R25	–
6-4/4-6		75-1/2	53-1/2	32-7/8	21-1/16	4.8	19.7	2.5	3	R25	–
6-4/5-0	E <sub>1</sub>	75-1/2	59-1/2	32-7/8	24-1/16	5.5	22.3	2.5	3	R25	–
6-4/5-2	E	75-1/2	61-1/2	32-7/8	25-1/16	5.7	23.2	2.5	3	R25	–
6-4/5-6	E	75-1/2	65-1/2	32-7/8	27-1/16	6.1	24.9	3	3	R25	–
6-4/6-0	E	75-1/2	71-1/2	32-7/8	30-1/16	6.8	27.5	3	3	R25	–
6-8/3-0		79-1/2	35-1/2	34-7/8	12-1/16	2.9	12.6	2.5	3	R25	–
6-8/3-2		79-1/2	37-1/2	34-7/8	13-1/16	3.1	13.5	2.5	3	R25	–
6-8/3-6		79-1/2	41-1/2	34-7/8	15-1/16	3.6	15.4	2.5	3	R25	–
6-8/3-10		79-1/2	45-1/2	34-7/8	17-1/16	4.1	17.2	2.5	3	R25	–
6-8/4-0		79-1/2	47-1/2	34-7/8	18-1/16	4.3	18.1	2.5	3	R25	–
6-8/4-4		79-1/2	51-1/2	34-7/8	20-1/16	4.8	19.9	2.5	3	R25	–
6-8/4-6		79-1/2	53-1/2	34-7/8	21-1/16	5.1	20.9	2.5	3	R25	–
6-8/5-0	E	79-1/2	59-1/2	34-7/8	24-1/16	5.8	23.6	2.5	3	R25	–
6-8/5-2	E	79-1/2	61-1/2	34-7/8	25-1/16	6.0	24.5	3	3	R25	–
6-8/5-6	E	79-1/2	65-1/2	34-7/8	27-1/16	6.5	26.4	3	3	R25	–
6-8/6-0	E	79-1/2	71-1/2	34-7/8	30-1/16	7.2	29.1	3	3	R25	–

**Egress Notes:**  
 Check all applicable local codes for emergency egress requirements.  
 E = Window meets minimum clear opening of 24" height, 20" width, and 5.7 ft<sup>2</sup>.  
 E1 = Window meets minimum clear opening of 24" height, 20" width, and 5.0 ft<sup>2</sup>.

Pella® 150 Series vinyl window products are intended only for use less than 40 feet above ground level.



(1) Maximum performance when glazed with the appropriate glass thickness.  
 (2) Indicates performance with additional steel reinforcement in sash cavity.  
 To convert areas to square meters (m<sup>2</sup>), multiply square feet by 0.0929





# Pella® 150 Series Double-Hung Window

## Design Data

3-Wide Vent - 4-3/16" New Construction Frame										
Unit	Egress	Frame (Inches)		Clear Opening (Vent Units Only)			Visible Glass Ft <sup>2</sup>	Standard Glass Thickness (mm)		Performance Class & Grade <sup>(1)</sup>
		Width	Height	Width	Height	Ft <sup>2</sup>		Annealed	Tempered	
6-0/3-0		71-1/2	35-1/2	18-7/8	12-1/16	1.5	9.5	2.5	3	R35
6-0/3-2		71-1/2	37-1/2	18-7/8	13-1/16	1.7	10.2	2.5	3	R35
6-0/3-6		71-1/2	41-1/2	18-7/8	15-1/16	1.9	11.6	2.5	3	R35
6-0/3-10		71-1/2	45-1/2	18-7/8	17-1/16	2.2	13.0	2.5	3	R35
6-0/4-0		71-1/2	47-1/2	18-7/8	18-1/16	2.3	13.6	2.5	3	R35
6-0/4-4		71-1/2	51-1/2	18-7/8	20-1/16	2.6	15.0	2.5	3	R35
6-0/4-6		71-1/2	53-1/2	18-7/8	21-1/16	2.7	15.7	2.5	3	R35
6-0/5-0		71-1/2	59-1/2	18-7/8	24-1/16	3.1	17.8	2.5	3	R25
6-0/5-2		71-1/2	61-1/2	18-7/8	25-1/16	3.2	18.5	2.5	3	R25
6-0/5-6		71-1/2	65-1/2	18-7/8	27-1/16	3.5	19.9	2.5	3	R25
6-0/6-0		71-1/2	71-1/2	18-7/8	30-1/16	3.9	21.9	2.5	3	R25
7-0/3-0		83-1/2	35-1/2	22-7/8	12-1/16	1.9	11.8	2.5	3	R35
7-0/3-2		83-1/2	37-1/2	22-7/8	13-1/16	2.0	12.7	2.5	3	R35
7-0/3-6		83-1/2	41-1/2	22-7/8	15-1/16	2.3	14.4	2.5	3	R35
7-0/3-10		83-1/2	45-1/2	22-7/8	17-1/16	2.7	16.1	2.5	3	R35
7-0/4-0		83-1/2	47-1/2	22-7/8	18-1/16	2.8	16.9	2.5	3	R35
7-0/4-4		83-1/2	51-1/2	22-7/8	20-1/16	3.1	18.7	2.5	3	R35
7-0/4-6		83-1/2	53-1/2	22-7/8	21-1/16	3.3	19.5	2.5	3	R35
7-0/5-0		83-1/2	59-1/2	22-7/8	24-1/16	3.8	22.1	2.5	3	R35
7-0/5-2		83-1/2	61-1/2	22-7/8	25-1/16	3.9	22.9	2.5	3	R35
7-0/5-6		83-1/2	65-1/2	22-7/8	27-1/16	4.3	24.7	2.5	3	R35
7-0/6-0		83-1/2	71-1/2	22-7/8	30-1/16	4.7	27.2	2.5	3	R35
7-6/3-0		88-1/2	35-1/2	24-7/8	12-1/16	2.0	12.9	2.5	3	R35
7-6/3-2		88-1/2	37-1/2	24-7/8	13-1/16	2.2	13.9	2.5	3	R35
7-6/3-6		88-1/2	41-1/2	24-7/8	15-1/16	2.6	15.8	2.5	3	R35
7-6/3-10		88-1/2	45-1/2	24-7/8	17-1/16	2.9	17.6	2.5	3	R35
7-6/4-0		88-1/2	47-1/2	24-7/8	18-1/16	3.1	18.6	2.5	3	R35
7-6/4-4		88-1/2	51-1/2	24-7/8	20-1/16	3.4	20.5	2.5	3	R35
7-6/4-6		88-1/2	53-1/2	24-7/8	21-1/16	3.6	21.4	2.5	3	R35
7-6/5-0		88-1/2	59-1/2	24-7/8	24-1/16	4.1	24.2	2.5	3	R35
7-6/5-2		88-1/2	61-1/2	24-7/8	25-1/16	4.3	25.2	2.5	3	R35
7-6/5-6		88-1/2	65-1/2	24-7/8	27-1/16	4.6	27.1	2.5	3	R35
7-6/6-0	E1	88-1/2	71-1/2	24-7/8	30-1/16	5.1	29.9	2.5	3	R35
8-0/3-0		95-1/2	35-1/2	26-7/8	12-1/16	2.2	14.1	2.5	3	R35
8-0/3-2		95-1/2	37-1/2	26-7/8	13-1/16	2.4	15.1	2.5	3	R35
8-0/3-6		95-1/2	41-1/2	26-7/8	15-1/16	2.8	17.2	2.5	3	R35
8-0/3-10		95-1/2	45-1/2	26-7/8	17-1/16	3.1	19.2	2.5	3	R35
8-0/4-0		95-1/2	47-1/2	26-7/8	18-1/16	3.3	20.2	2.5	3	R35
8-0/4-4		95-1/2	51-1/2	26-7/8	20-1/16	3.7	22.3	2.5	3	R35
8-0/4-6		95-1/2	53-1/2	26-7/8	21-1/16	3.9	23.3	2.5	3	R35
8-0/5-0		95-1/2	59-1/2	26-7/8	24-1/16	4.5	26.4	2.5	3	R35
8-0/5-2		95-1/2	61-1/2	26-7/8	25-1/16	4.6	27.4	2.5	3	R35
8-0/5-6	E1	95-1/2	65-1/2	26-7/8	27-1/16	5.0	29.4	2.5	3	R35
8-0/6-0	E1	95-1/2	71-1/2	26-7/8	30-1/16	5.6	32.5	2.5	3	R35
9-0/3-0		107-1/2	35-1/2	30-7/8	12-1/16	2.5	16.4	2.5	3	R35
9-0/3-2		107-1/2	37-1/2	30-7/8	13-1/16	2.8	17.6	2.5	3	R35
9-0/3-6		107-1/2	41-1/2	30-7/8	15-1/16	3.2	19.9	2.5	3	R35
9-0/3-10		107-1/2	45-1/2	30-7/8	17-1/16	3.6	22.3	2.5	3	R35
9-0/4-0		107-1/2	47-1/2	30-7/8	18-1/16	3.8	23.5	2.5	3	R35
9-0/4-4		107-1/2	51-1/2	30-7/8	20-1/16	4.3	25.9	2.5	3	R35
9-0/4-6		107-1/2	53-1/2	30-7/8	21-1/16	4.5	27.1	2.5	3	R35
9-0/5-0	E1	107-1/2	59-1/2	30-7/8	24-1/16	5.1	30.7	2.5	3	R35
9-0/5-2	E1	107-1/2	61-1/2	30-7/8	25-1/16	5.3	31.9	2.5	3	R35

**Egress Notes:**  
 Check all applicable local codes for emergency egress requirements.  
 E1 = Window meets minimum clear opening of 24" height, 20" width, and 5.0 ft<sup>2</sup>.

Pella® 150 Series vinyl window products are intended only for use less than 40 feet above ground level.



East Region Only

(1) Maximum performance when glazed with the appropriate glass thickness.

To convert areas to square meters (m<sup>2</sup>), multiply square feet by 0.0929





# Pella® 150 Series Double-Hung Window

## Detailed Product Description

### Frame

- Overall frame depth is 3-1/4" replacement frame with perimeter foam [optional sill adapter and head expander] [4-3/16" new construction frame with [integral fin] [with integral fin and J-channel]].
- Frame members are extruded, rigid uPVC.
- Frame members are mitered and heat-fused to provide a fully welded corner assembly.

### Sash

- Sash members are extruded, rigid uPVC.
- Sash members are mitered and heat-fused to provide a fully welded corner assembly.
- Includes an integral extruded sash lift.

### Weatherstripping

- Frame and sash is weatherstripped around the perimeter with a fin-type, pile weatherstripping.

### Glazing System

- Quality float glass complying with ASTM C1036.
- Exterior face-glazed 3/4" sealed insulating glass.
- [Clear] [Advanced Low-E coated [with argon]] [SunDefense™ Low-E coated, [with argon]] [NaturalSun Low-E [with argon]] [bronze, Advanced Low-E coated, [with argon]]; [Clear] [obscure] [tempered].

### Interior / Exterior

- All window frame members have an integral color extruded throughout the profiles.
- All exposed PVC surfaces are smooth, glossy and uniform in appearance.
- Color: [Almond] [White] [Fossil].

### Hardware

- Constant force balances are concealed within the frame and connected to the sash with a bracket which houses a stainless steel coil spring.
- Upper and lower sashes are fully operable for ventilation.
- All fasteners are corrosion-resistant material compatible with PVC.
- Locks are factory-installed, zinc die cast, self aligning, cam action locks located on the checkrail.
- Two sash locks are installed on units with 29-1/2" or greater frame width.
- Tilt latches are factory installed, zinc die cast and are located on the checkrail of the lower sash and the top rail of the upper sash.
- Factory pre-finished to match interior.

### Screen

- InView™ Screens Black vinyl coated 18/18 mesh fiberglass screen cloth complying with SMA 1201.
- [Full-size] [Half-screen] Set in aluminum frame and fitted to exterior of window.
- Screens for window with frame height ≤ 51-1/2" have one plunger per side, windows with frame height > 51-1/2" have two plungers per side.
- Screens for windows with frame width >39" or frame height > 53-1/2" have a screen spreader bar

### Optional Products

- Primed wood jamb extensions available on 2-9/16" wall depth frame-for [4-9/16"] and [6-9/16"] frame depth.

### Grilles

- Grilles-Between-the-Glass
  - Insulating glass contains [3/4"] contoured aluminum grilles permanently installed between two panes of glass.
  - Grilles match color of frame.
- Optional limited opening hardware for field installation available for vent units in extruded vinyl, color to match the unit; nominal 3-3/4" opening.
- Optional window opening control device available for field installation. Device allows window to open less than 4" with normal operation, with a release mechanism that allows the sash to open completely. Complies with ASTM F2090-10.



East Region Only

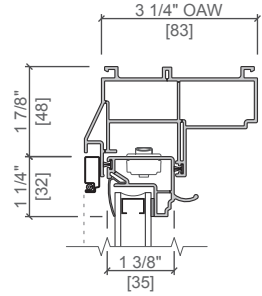


# Pella® 150 Series Double-Hung Window

## Frame Types

### REPLACEMENT FRAME

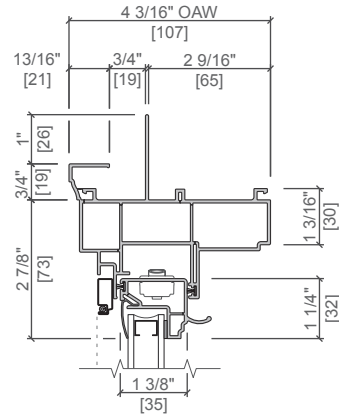
Standard Block Frame



### NEW CONSTRUCTION FRAME

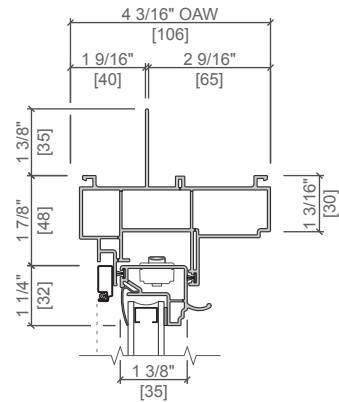
Standard Nail Fin with J-Channel

2 9/16" WALL DEPTH  
STANDARD NAIL FIN  
with J-CHANNEL



### Standard Nail Fin

2 9/16" WALL DEPTH  
STANDARD NAIL FIN



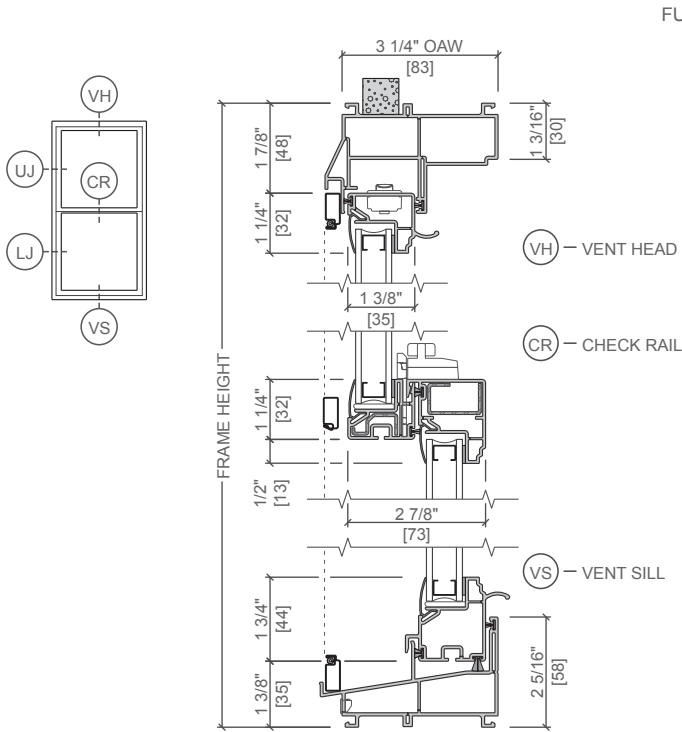
East Region Only

Scale 3" = 1' 0"  
All dimensions are approximate.

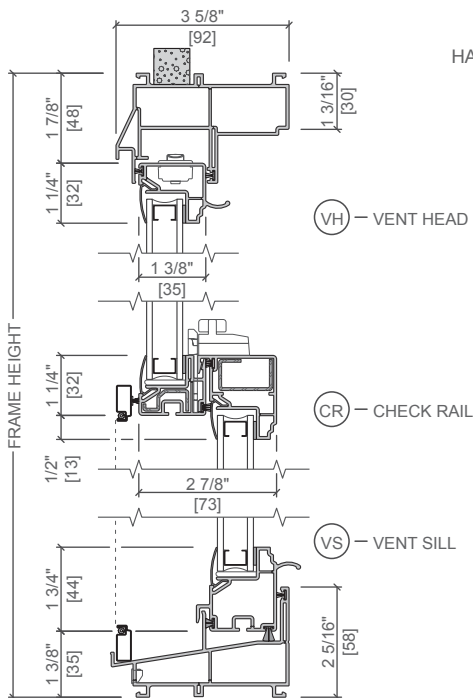
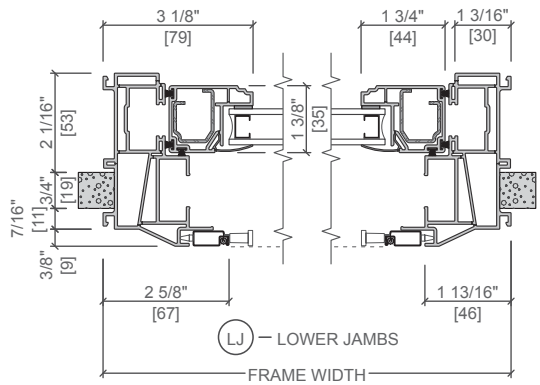
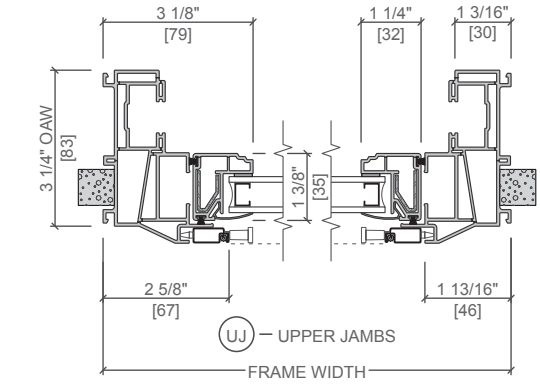


# Pella® 150 Series Double-Hung Window

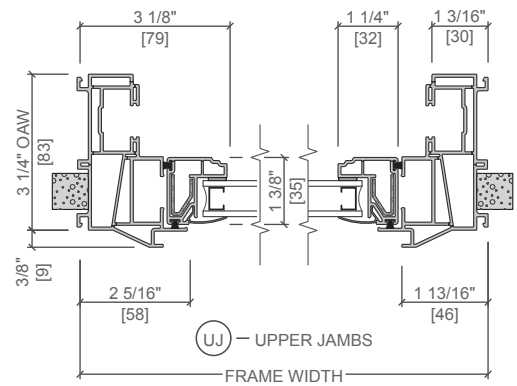
## Unit Sections - 3-1/4" Replacement Frame



FULL SCREEN



HALF SCREEN



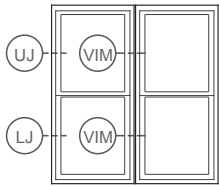
East Region Only

Scale 3" = 1' 0"  
All dimensions are approximate.

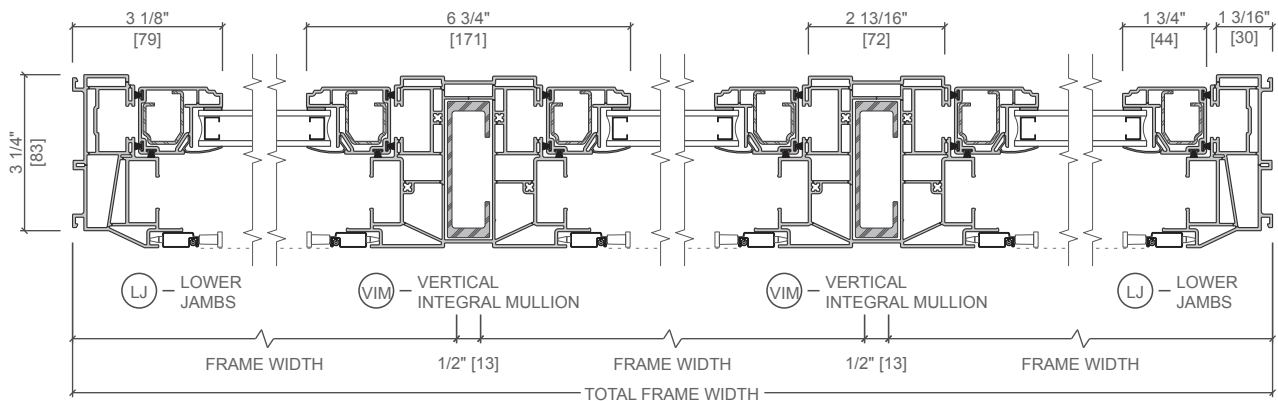
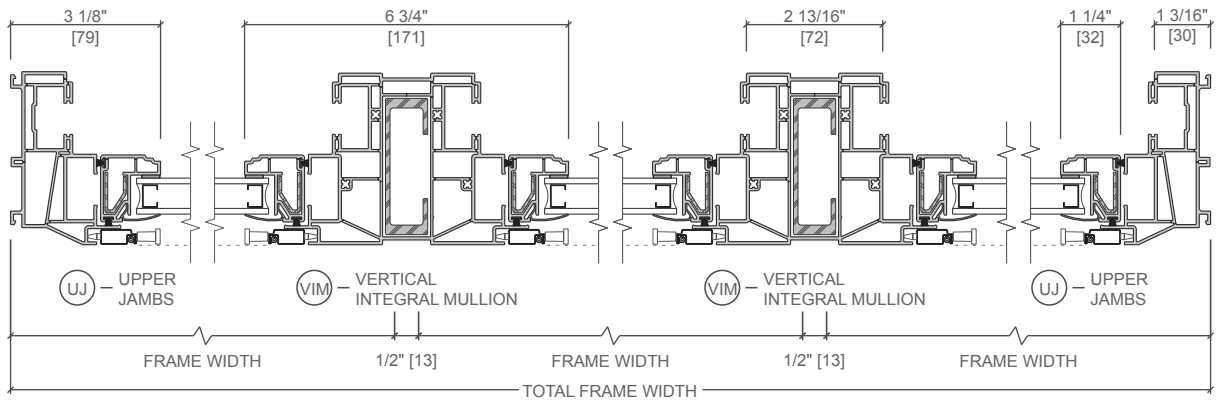
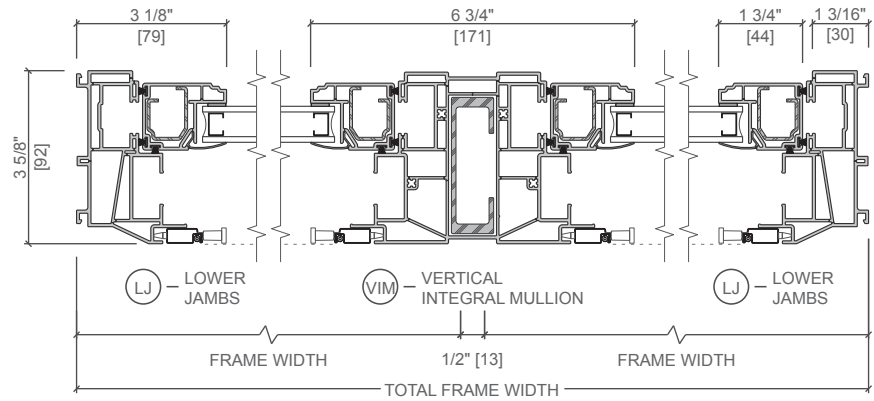
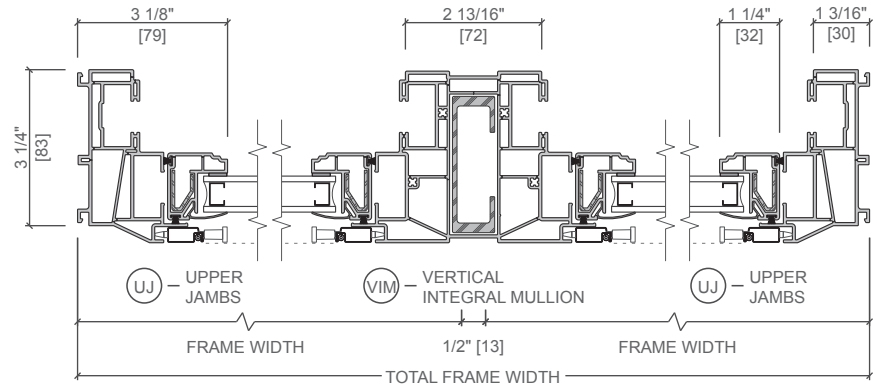
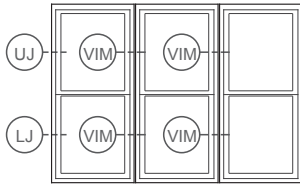


# Pella® 150 Series Double-Hung Window

## Unit Sections - 3-1/4" Replacement Frame Composite with Integral Mullion



East Region Only

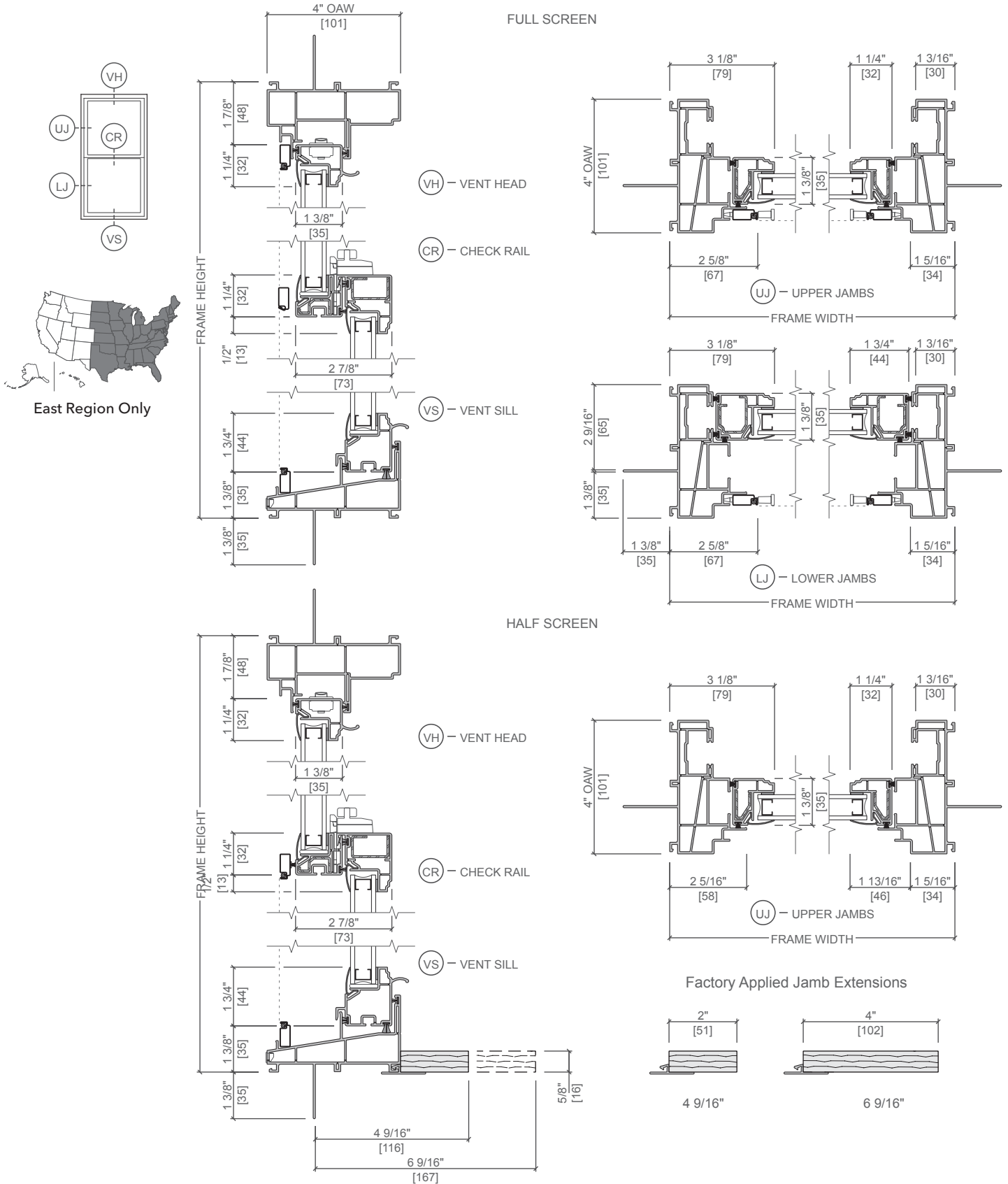


Scale 3" = 1' 0"  
All dimensions are approximate.



# Pella® 150 Series Double-Hung Window

## Unit Sections - 4-3/16" New Construction Frame

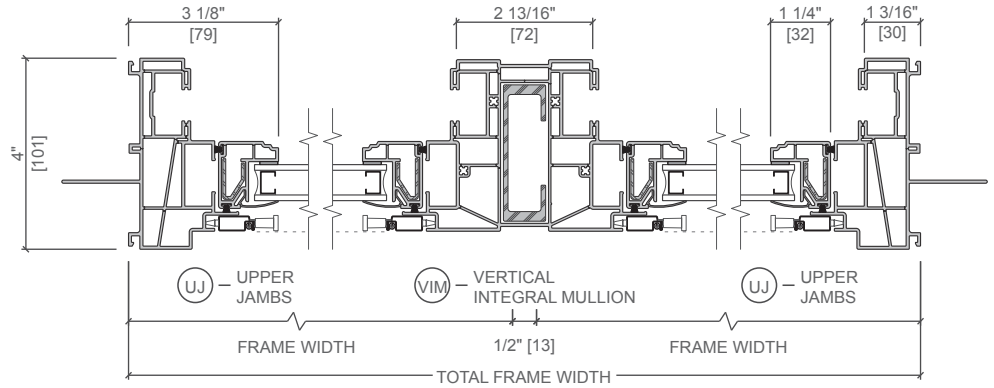
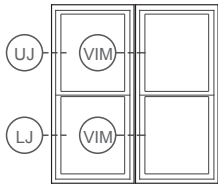


Scale 3" = 1' 0"  
All dimensions are approximate.

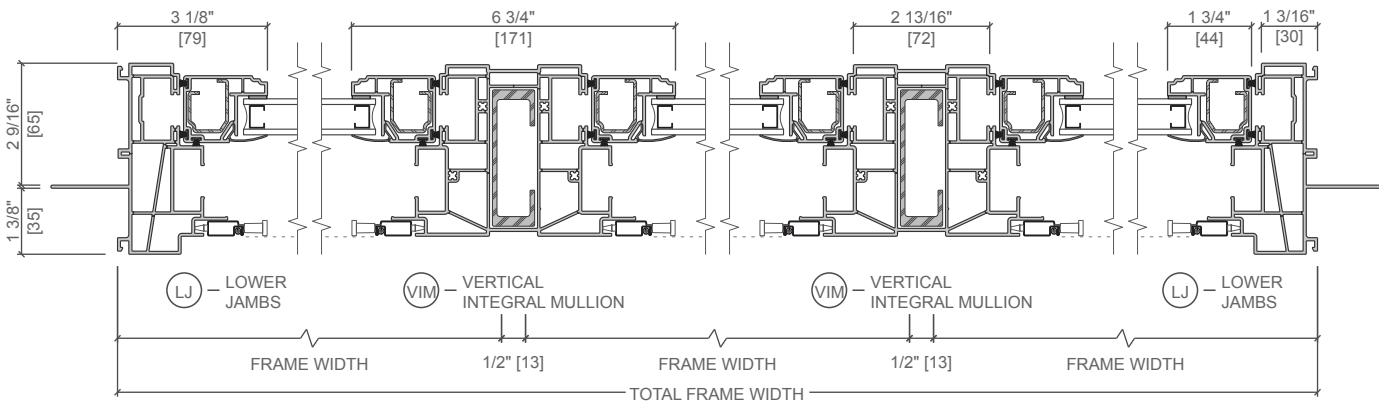
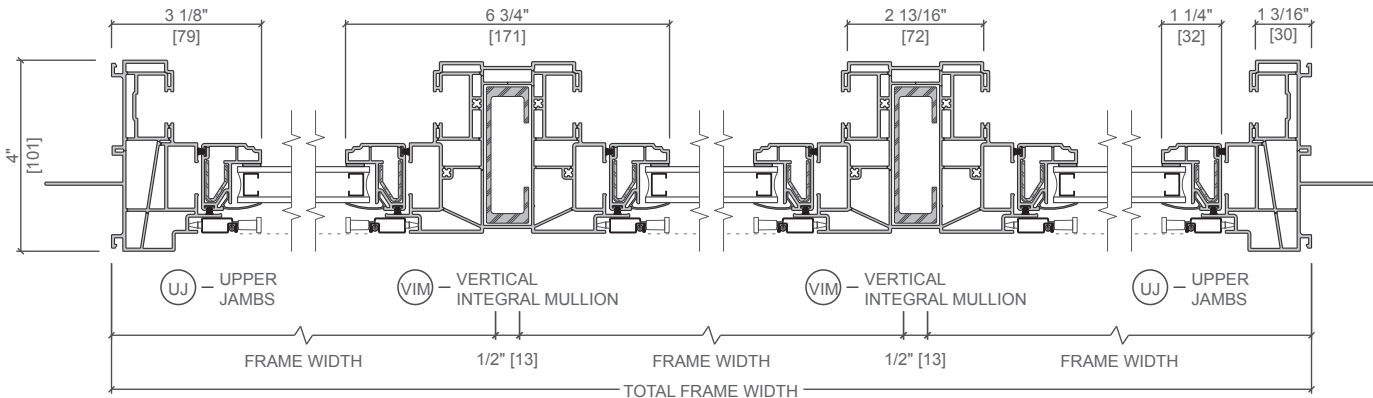
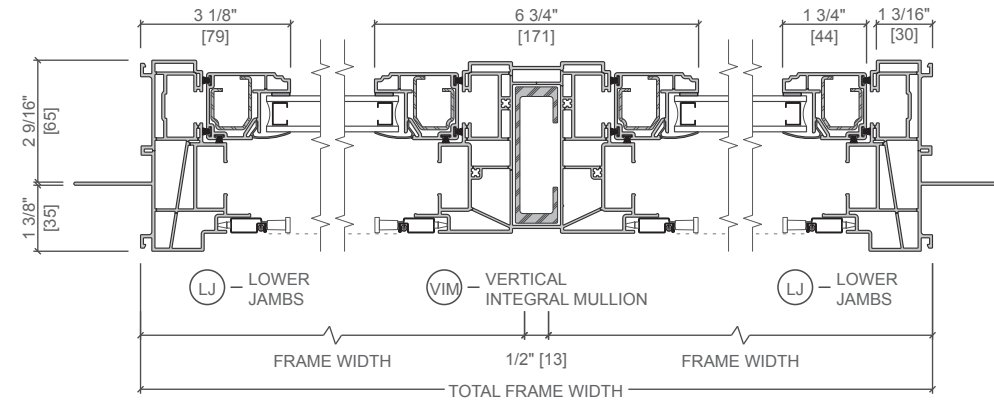
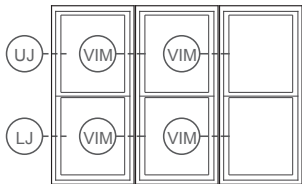


# Pella® 150 Series Double-Hung Window

## Unit Sections - 4-3/16" New Construction Frame Composite with Integral Mullion



East Region Only



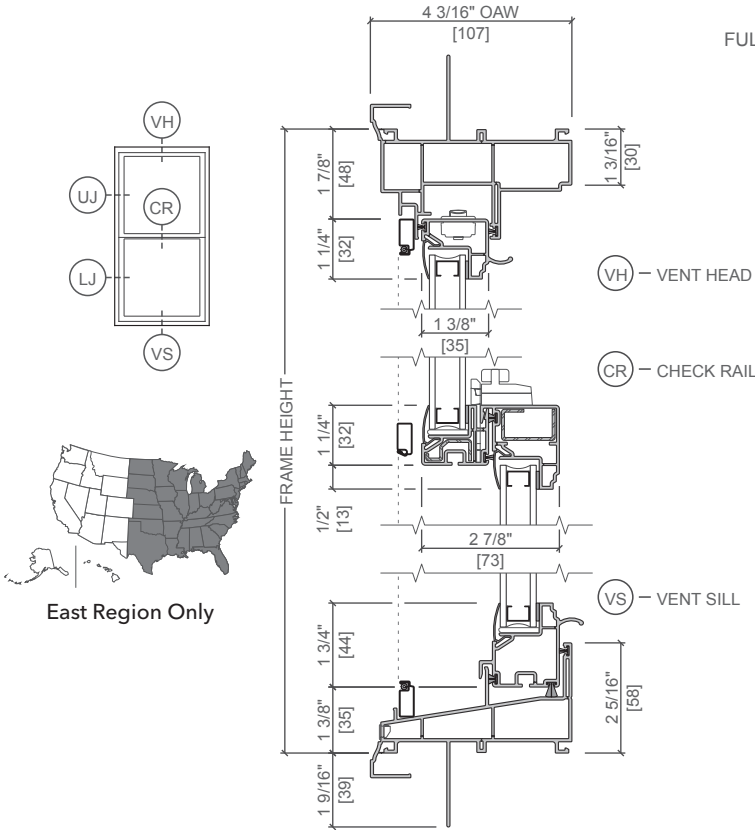
Scale 3" = 1' 0"

All dimensions are approximate.

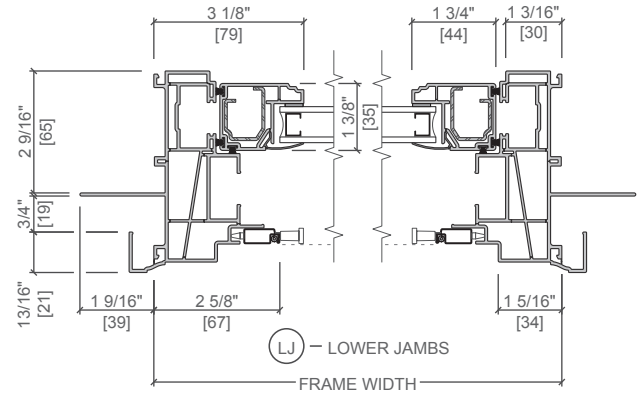
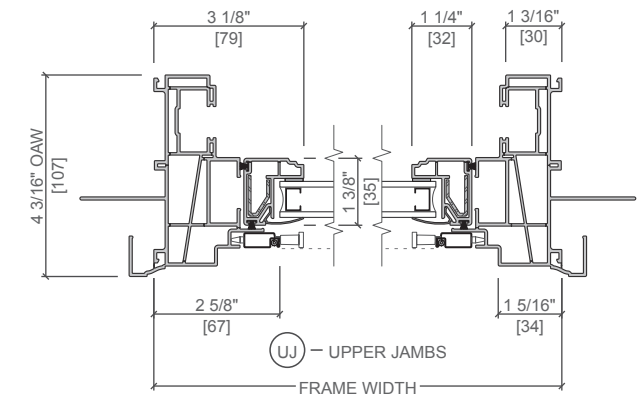


# Pella® 150 Series Double-Hung Window

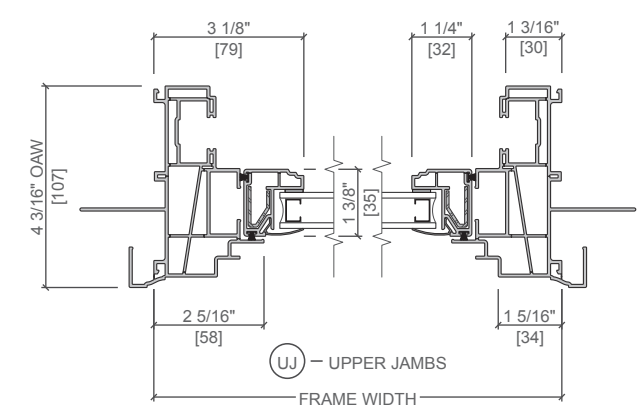
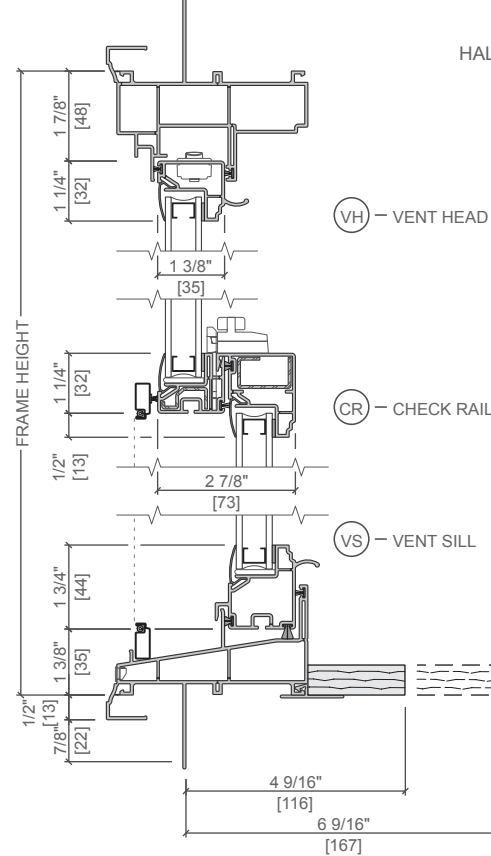
## Unit Sections - 4-3/16" New Construction Frame with J-Channel



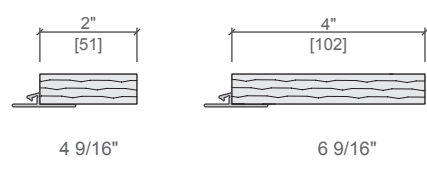
### FULL SCREEN



### HALF SCREEN



### Factory Applied Jamb Extensions

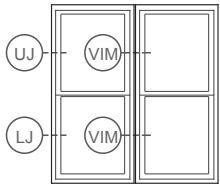


Scale 3" = 1' 0"  
All dimensions are approximate.

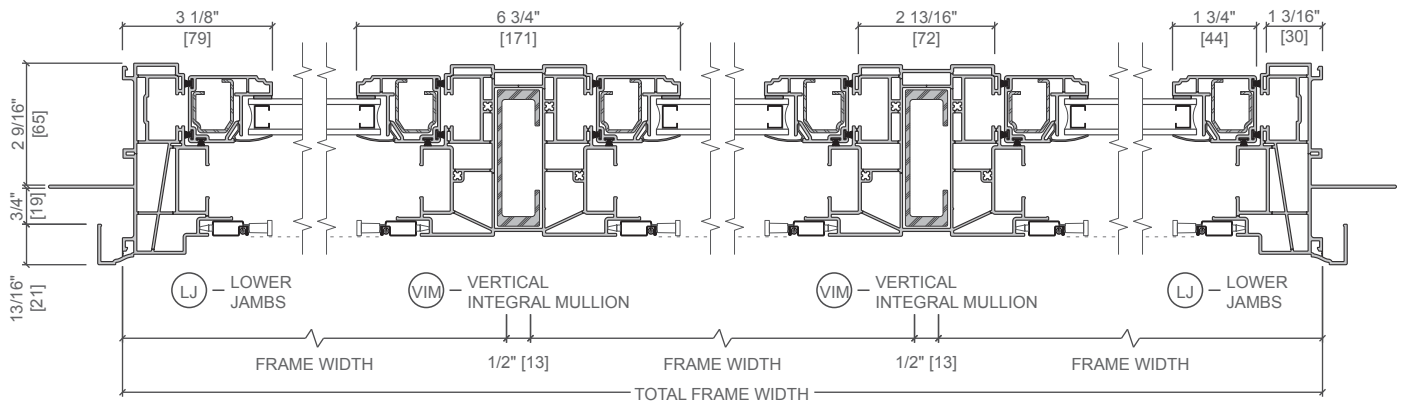
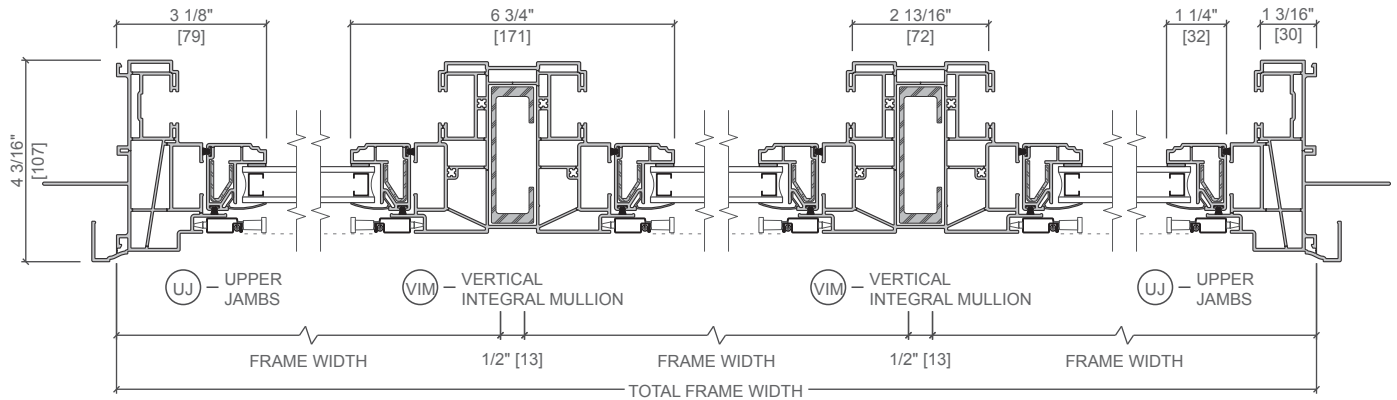
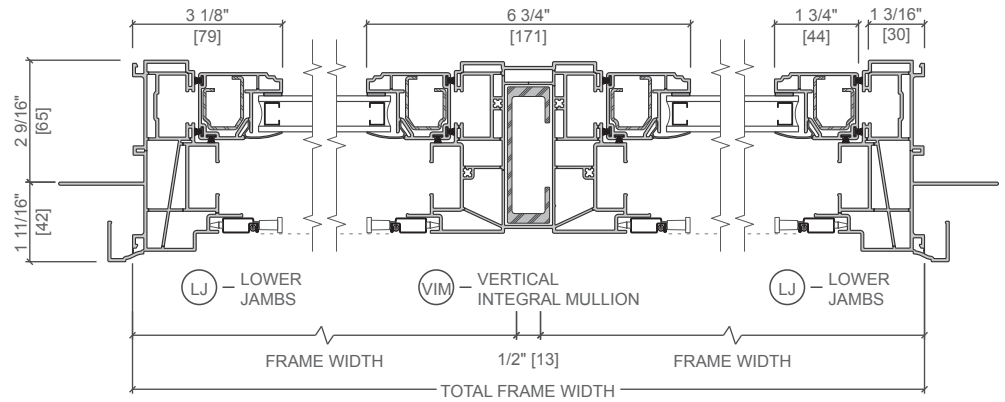
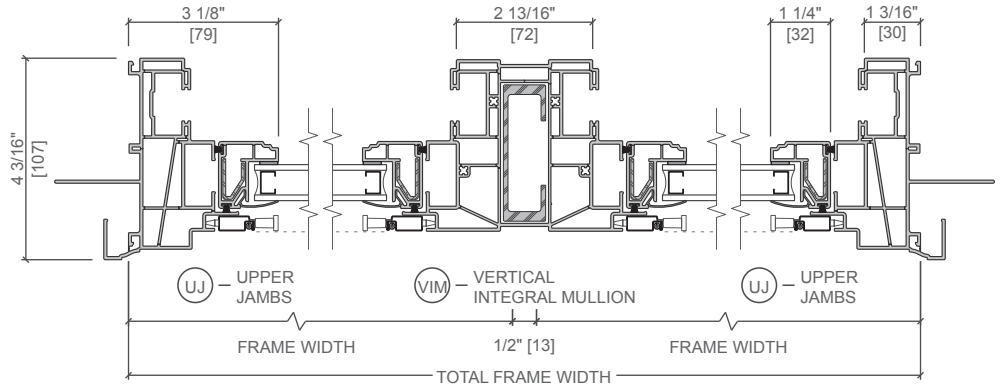
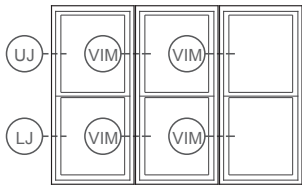


# Pella® 150 Series Double-Hung Window

## Unit Sections - 4-3/16" New Construction Frame Composite with J-Channel



East Region Only



Scale 3" = 1' 0"  
All dimensions are approximate.