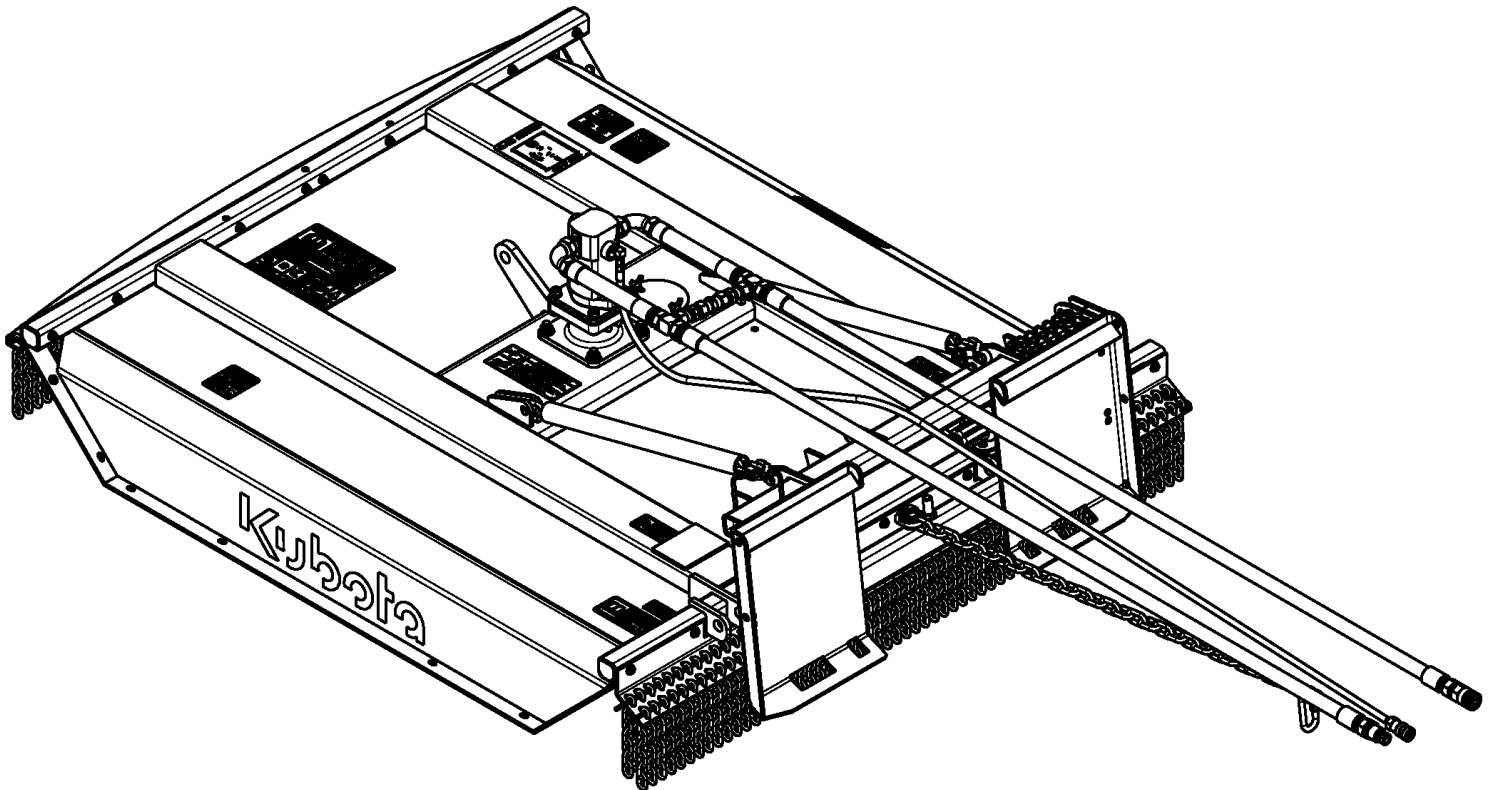


Skid Cutters

AP-SC2560 & AP-SC2572



326-836PK **Parts Manual**

Kubota®



Read the Operator's Manual entirely. When you see this symbol, the subsequent instructions and warnings are serious - follow without exception. Your life and the lives of others depend on it!

© Copyright 2022 Printed 06/29/2022

Cover photo may show optional equipment not supplied with standard unit.

Table Of Contents

Section 1: Introduction	2	Section 5: Decals	48
<i>Using This Manual</i>	2	<i>Decals SC2560</i>	48
<i>Manual Replacement Information</i>	2	<i>Decals SC2572</i>	50
<i>Manual Revisions</i>	2	<i>Touch-up Paints - Kubota</i>	52
<i>Touch-up Paint</i>	2	Section 6: Options & Accessories	54
<i>Hardware Legend</i>	3	<i>Gauge Wheel S/N 1002069K-</i>	54
<i>Replacement Hardware</i>	3	<i>Gauge Wheel S/N 1002070K+</i>	56
<i>Serial Numbers</i>	3	<i>Hub Assembly 4-Bolt W/ Zerk & Studs (815-092C)</i>	58
<i>Part Number Service Coding</i>	3	<i>Large Flat Faced Couplers With Adapters Bundle</i>	60
Section 2: Cutter Assembly	4	<i>Motor Pressure Gauge (326-832K)</i>	62
<i>Blade Drive 60"</i>	4	<i>Motor Pressure Gauge (327-376A)</i>	64
<i>Blade Drive 72" S/N 1108075K-</i>	6	<i>Protective Door</i>	66
<i>Blade Drive 72" S/N 1108076K+</i>	8	<i>Skid Shoe Options</i>	68
<i>Deck 60"</i>	10		
<i>Deck 72" S/N 1108075K-</i>	12		
<i>Deck 72" S/N 1108076K+</i>	14		
<i>Guard Chain Front S/N 1002069K-</i>	16		
<i>Guard Chain Front S/N 1002070K+</i>	18		
<i>Guard Chain Rear</i>	20		
<i>Hitch Components</i>	22		
Section 3: Hydraulics	24		
<i>Hydraulic Motor 4.9 Cubic Inch Eaton (850-090C)</i>	24		
<i>Hydraulic Motor 6.2 Cubic Inch Eaton (850-091C)</i>	26		
<i>Hydraulic Motor 6.7 Cubic Inch Eaton (850-521C)</i>	28		
<i>Hydraulic Motor 7.9 Cubic Inch Eaton (850-029C)</i>	30		
<i>Hydraulic Motor 7.9 Cubic Inch Eaton (850-522C)</i>	32		
<i>SC2560 Motor & Hose Assembly (Eaton)</i> ..	34		
<i>SC2572 Motor & Hose Assembly (Eaton) S/N 1108075K-</i>	36		
<i>SC2572 Motor & Hose Assembly (Eaton) S/N 1108076K+</i>	38		
<i>Spindle Hub Assembly (826-110C)</i>	40		
Section 4: Gearboxes	42		
<i>Flex Coupler (826-548C)</i>	42		
<i>Flex Coupler (826-962C)</i>	44		
<i>Gearbox (826-380C) Comer</i>	46		

This Page Intentionally Left Blank

Using This Manual

This manual is divided into sections. The first section contains General Information. The remaining sections divide the machine into segments (i.e. Frames, Drives, Hydraulics, etc.) which illustrate and list all parts. A Parts Number Index is located at the back of the book.

The Kubota parts in this manual are specially designed for this machine and should be replaced with Kubota parts only.

The information in this manual is current at time of printing. Some parts may change to assure top performance.

Right-hand and left-hand as used in this manual are determined by facing the direction the machine will travel while in use.

Below is an example of two facing pages from a parts manual. Familiarize yourself with the type of information contained on these pages.

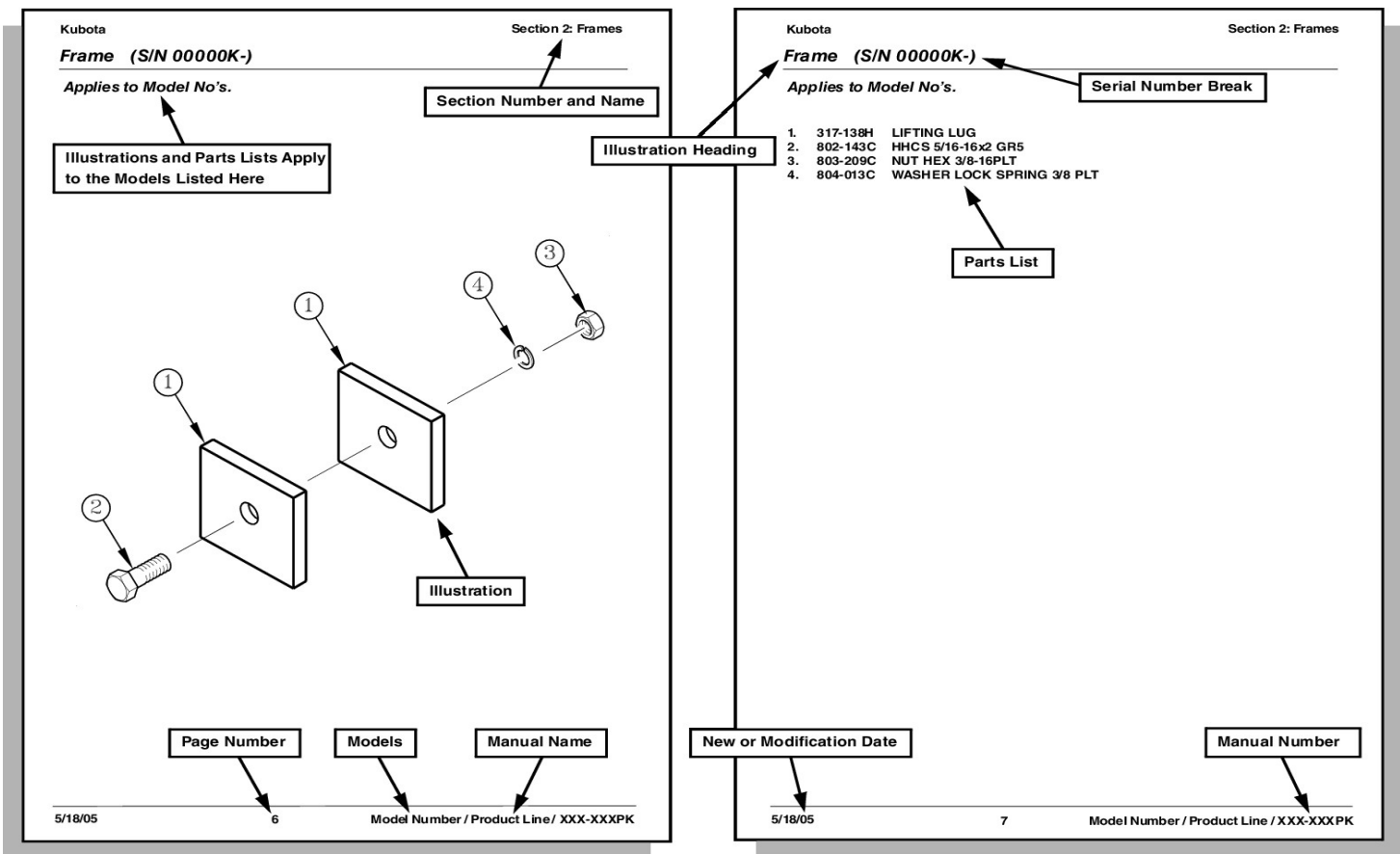
Manual Replacement Information

Replacement manuals are available. Refer to our website at www.landpride.com or e-mail us at lit@landpride.com for additional information. Our website continues to provide the most up-to-date manuals available.

Touch-up Paint

Repaint parts where paint is worn or scratched to prevent rust. Aerosol cans and touch-up bottles with brush applicator are available through your local dealer. Also available are quart and gallon size paints. Add QT or GL to end of the Aerosol P/N.

Kubota color descriptions and part numbers are listed on the "Kubota Touch-Up Paints" page in the "Decals" section of this book.



© Copyright 2022. All rights Reserved

Kubota provides this publication "as is" without warranty of any kind, either expressed or implied. While every precaution has been taken in the preparation of this manual, Kubota assumes no responsibility for errors or omissions. Neither is any liability assumed for damages resulting from the use of the information contained herein. Kubota reserves the right to revise and improve its products as it sees fit. This publication describes the state of this product at the time of its publication, and may not reflect the product in the future. The illustrations in this manual are not intended for safe and proper assembly or disassembly of equipment. The illustrations are intended for ordering parts only.

Kubota is a registered trademark.

All other brands and product names are trademarks or registered trademarks of their respective holders.

Printed in the United States of America.

Hardware Legend

AR	As Required
BLADE	Blade Bolt
C	Cap Screw
CP	Cotter Pin
CPHSSS	Cup Point Hex Socket Set Screw
CPSHSS	Cup Point Square Head Set Screw
CPSQHSS	Cup Point Square Head Set Screw
CRFCHMS3	Cross Recess Flat Countersunk Head Machine Screw
CRPHMS	Cross Recess Pan Head Machine Screw
CRPHTFS	Cross Recess Pan Head Thread Forming
CRRHMS	Cross Recess Round Head Machine Screw
CRTHMS	Cross Recess Truss Head Machine Screw
CSNB	Countersunk Square Neck Bolt
FHMS	Flat Head Machine Screw
FTC	Full Thread Cap Screw
H	Hex Nut
HCLN	Hex Center Lock Nut
HFLCS	Hex Flange Lock Cap Screw
HFS	Hex Flange Screw
HFSLN	Hex Flange Serrated Lock Nut
HFSS	Hex Flange Serrated Screw
HHCS	Hex Head Cap Screw or Metric Bolt
HSBHCS	Hex Socket Button Head Cap Screw
HSFCHCS	Hex Socket Flat Countersunk Head Cap Screw
HSHCS	Hex Socket Head Cap Screw
HSSS	Hex Socket Head Screw
HTLN	Hex Top Lock Nut
HWHCS	Hex Washer Head Cap Screw

HWHMS	Hex Washer Head Machine Screw
HXBHCS	Hex Socket Button Head Cap Screw
J	Hex Jam Nut
JIC	37 Degree Tapered Thread
L	Helical Spring Lock Washer
LUG	Lug Bolt
NFC	National Fine Cap Screw
NPSM	National Pipe Straight Mechanical
NPTF	National Pipe Taper Fuel
P	Wide Plain Washer
PHMS	Pan Head Machine Screw
PLOW	Plow Bolt
RHMS	Round Head Machine Screw
RHSNB	Round Head Square Neck Bolt
SCREW LEVELING	Leveling Screw
SCREW THUMB	Thumb Screw
SCREW WELD	Weld Screw
SFCHMS	Slotted Flat Countersunk Head Machine Screw
SFHMS	Slotted Fillister Head Machine Screw
SP	Special
SP SCREW	Special Screw
SQHSS	Square Head Set Screw
SRHMS	Slotted Round Head Machine Screw
SSS	Socket Set Screw
STCS	Self Tapping Cap Screw
STHMS	Slotted Truss Head Machine Screw
WHEEL	Wheel Studs and Hub Long Bolts
WING	Wing Bolt

Replacement Hardware

The **Hardware Legend** above lists hardware abbreviations used in the parts list. All bolts and nuts are Grade 5 unless otherwise noted. The use of improper grades of hardware can result in personal injury, damage to equipment, or loss of property.

Part Number Service Coding

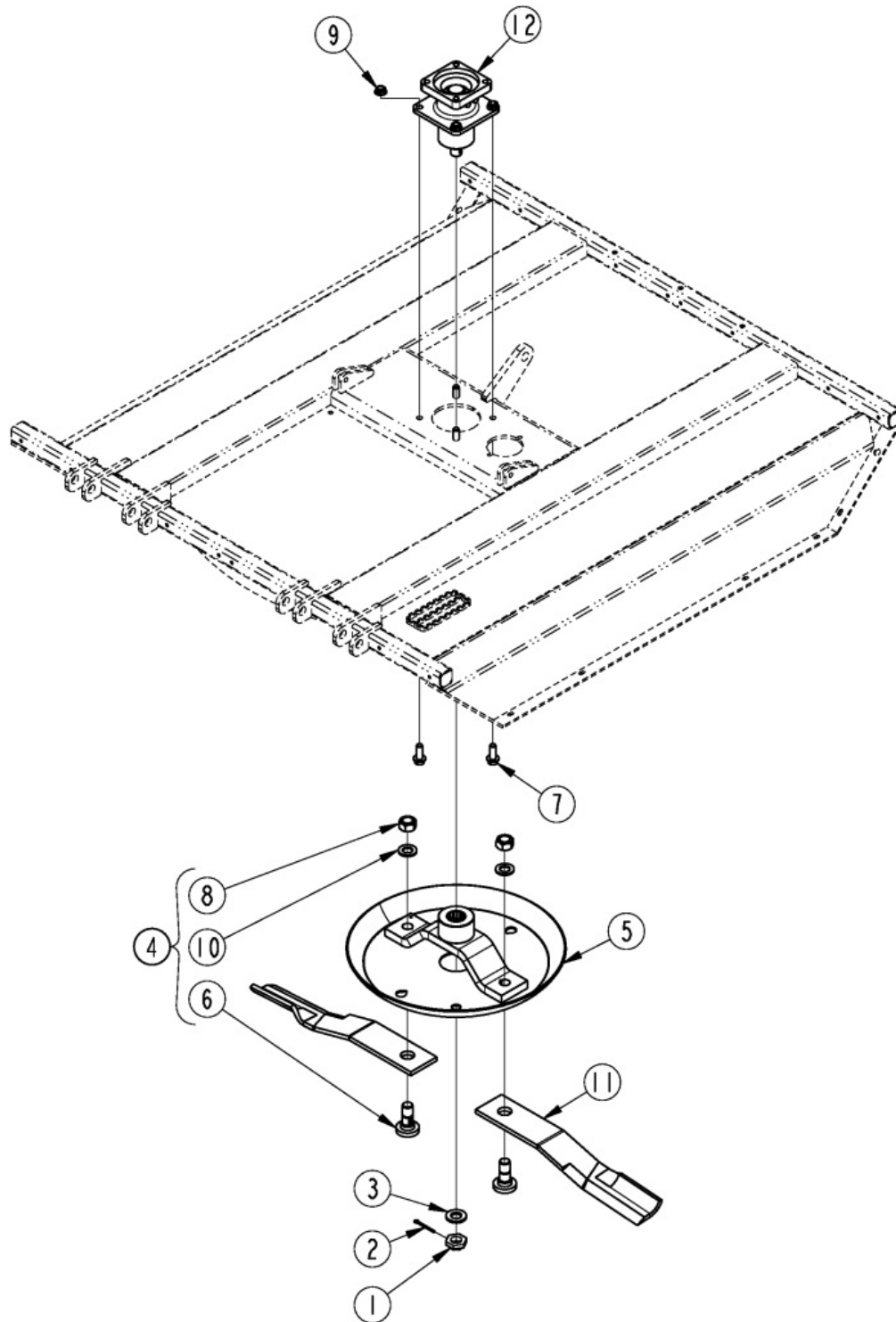
Within the parts list some part numbers are coded for revisions and interchangeability. See notations in revision column.

Serial Numbers

Always use the serial and model number when ordering parts. Refer to the Operator's Manual for serial number plate location.

- (S/N 20001K+) Includes serial numbers 20001K and above (to the latest number)
- (S/N 10001K to 20000K) Includes serial numbers between and including 10001K and 20000K
- (S/N 10000K-) Includes serial numbers 10000K and below (to the earliest number)

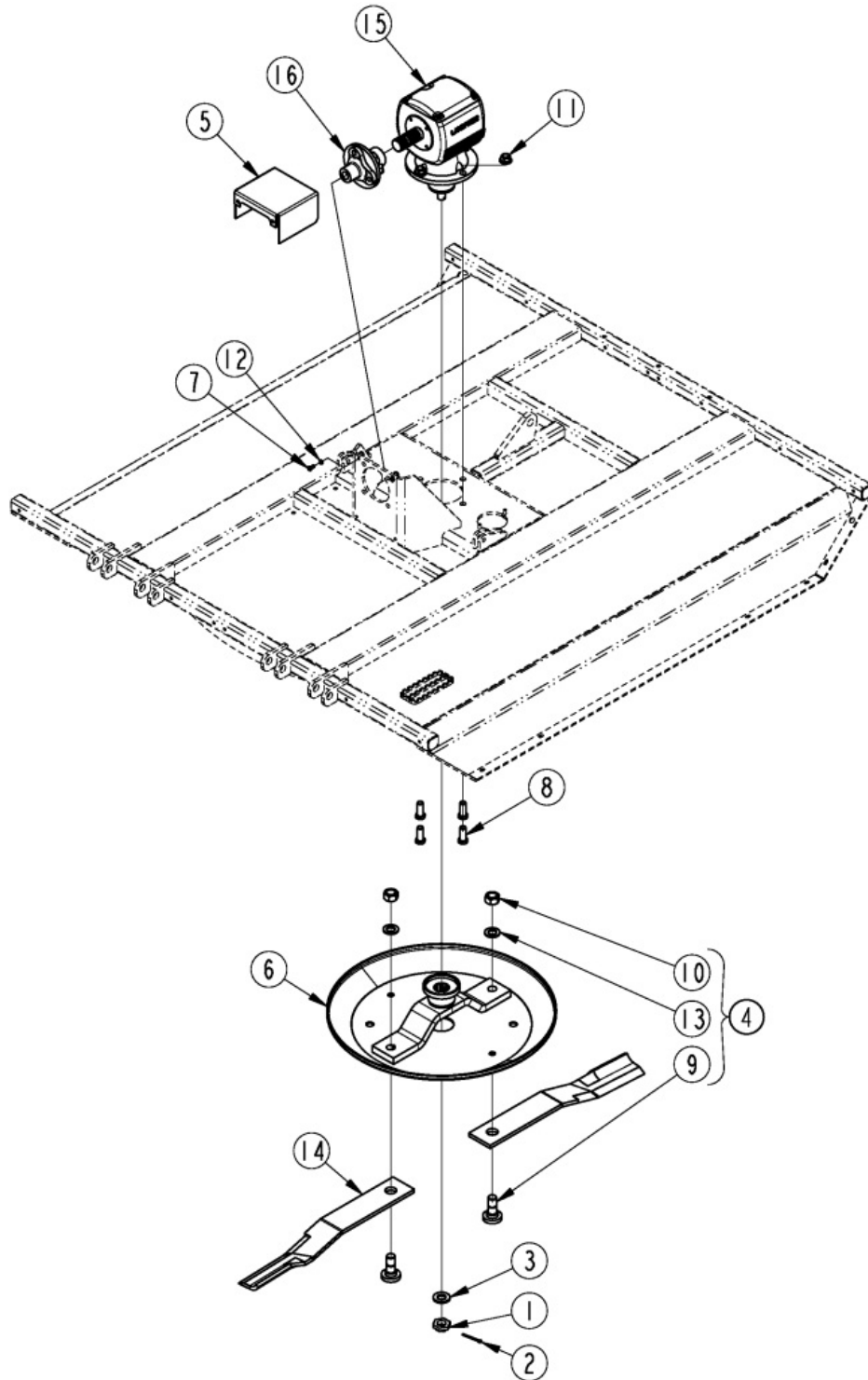
Applies to Models: AP-SC2560



Applies to Models: AP-SC2560

Ref.	Part No.	Part Description	Comments
	DWG 37913	Drawing Image Number	
1	8.2.2.00555	CO NUT, CASTLE M30 X 2	
2	8.4.7.00146	COTTER PIN B6 X 60	
3	0.139.7101.00	CO BLANK WASHER	
4	318-586A	BLADE BOLT KIT	
5	316-124H	24RND DSHPN WMT 15C/C SPCL-HB	
6	802-277C	BLD BLT 1 1/8-12X3.44 W/.25KEY	
7	802-657C	HFS 5/8-11 X 1 3/4 GR8	
8	803-170C	NUT HEX TOP LOCK 1 1/8-12 PLT	
9	803-263C	NUT HEX FLANGE LOCK 5/8-11 PLT	
10	804-147C	WASHER FLAT 1" HARDENED	
11	820-112C	CUTTER BLADE 1/2X4X25 CW	
12	826-110C	SPINDLE HUB ASSY	

Applies to Models: AP-SC2572

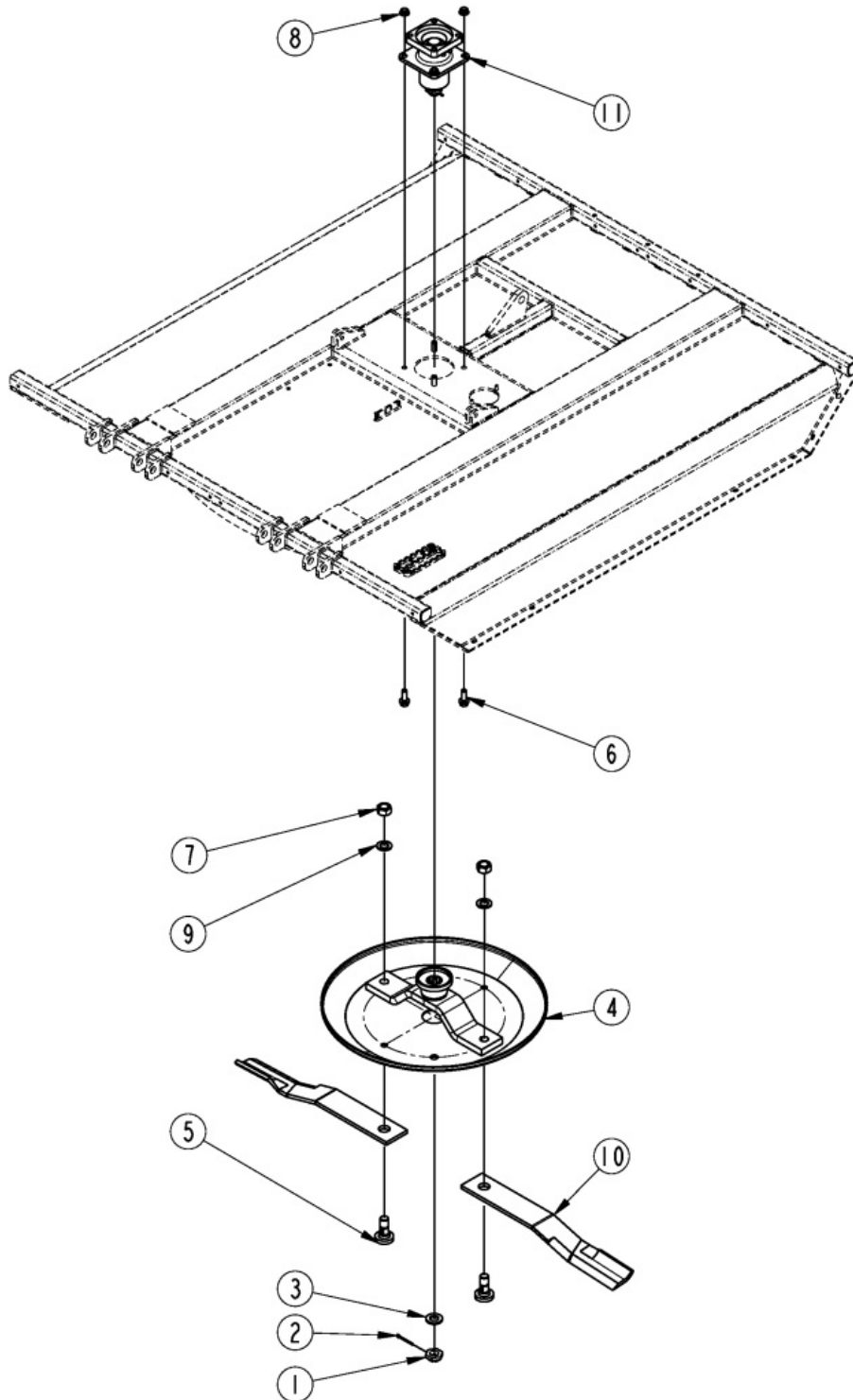


Blade Drive 72" S/N 1108075K-

Applies to Models: AP-SC2572

Ref.	Part No.	Part Description	Comments
	DWG 37914	Drawing Image Number	
1	8.2.2.00555	CO NUT, CASTLE M30 X 2	
2	8.4.7.00146	COTTER PIN B6 X 60	
3	0.139.7101.00	CO BLANK WASHER	
4	318-586A	BLADE BOLT KIT	
5	326-096H	GUARD WELDMENT	
6	327-144H	30RND DSHON WMT 19C/C 2.8 OS	
7	802-007C	HHCS 5/16-18X3/4 GR5	
8	802-064C	HHCS 3/4-10X2 GR5	
9	802-277C	BLD BLT 1 1/8-12X3.44 W/.25KEY	
10	803-170C	NUT HEX TOP LOCK 1 1/8-12 PLT	
11	803-299C	NUT HEX FLG TOP LK 3/4-10 PLT	
12	804-009C	WASHER LOCK SPRING 5/16 PLT	
13	804-147C	WASHER FLAT 1" HARDENED	
14	820-249C	CUTTER BLADE 1/2X4X29 CW	
15	826-380C	GBOX RC35 1.75-20 1.21:1 STD.	
16	826-548C	DRVLN 6F 1.75-20 FLXCPLR	S/N -----
16	826-962C	DRVLN 6F 1.75-20 FLXCPLR	S/N -----+

Applies to Models: AP-SC2572

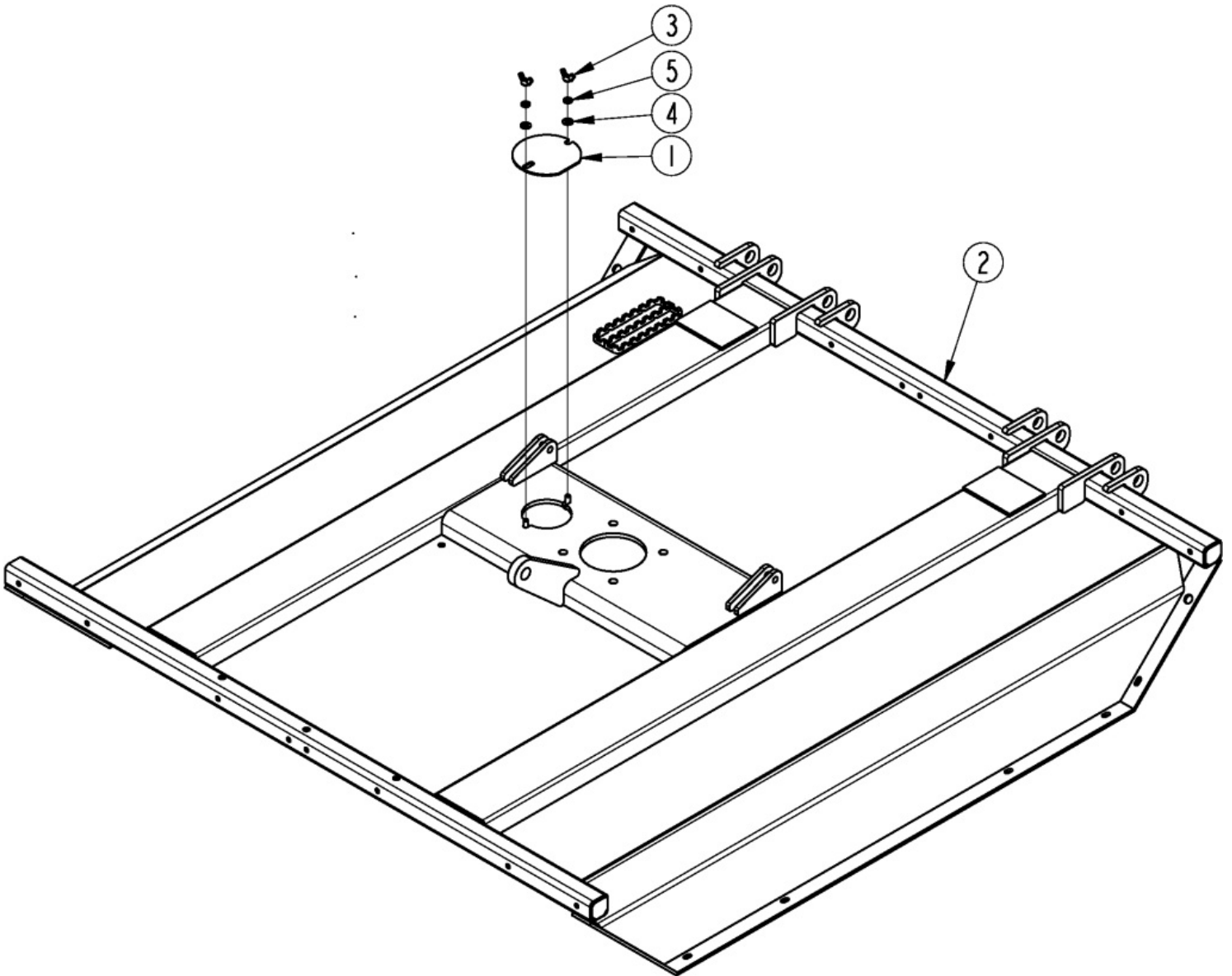


Blade Drive 72" S/N 1108076K+

Applies to Models: AP-SC2572

Ref.	Part No.	Part Description	Comments
	DWG 76399	Image No.	
1	8.2.2.00555	CO NUT, CASTLE M30 X 2	
2	8.4.7.00146	COTTER PIN B6 X 60	
3	0.139.7101.00	CO BLANK WASHER	
4	327-144H	30RND DSHON WMT 19C/C 2.8 OS	
5	802-277C	BLD BLT 1 1/8-12X3.44 W/.25KEY	
6	802-657C	HFS 5/8-11 X 1 3/4 GR8	
7	803-170C	NUT HEX TOP LOCK 1 1/8-12 PLT	
8	803-263C	NUT HEX FLANGE LOCK 5/8-11 PLT	
9	804-147C	WASHER FLAT 1" HARDENED	
10	820-249C	CUTTER BLADE 1/2X4X29 CW	
11	826-110C	SPINDLE HUB ASSY	

Applies to Models: AP-SC2560

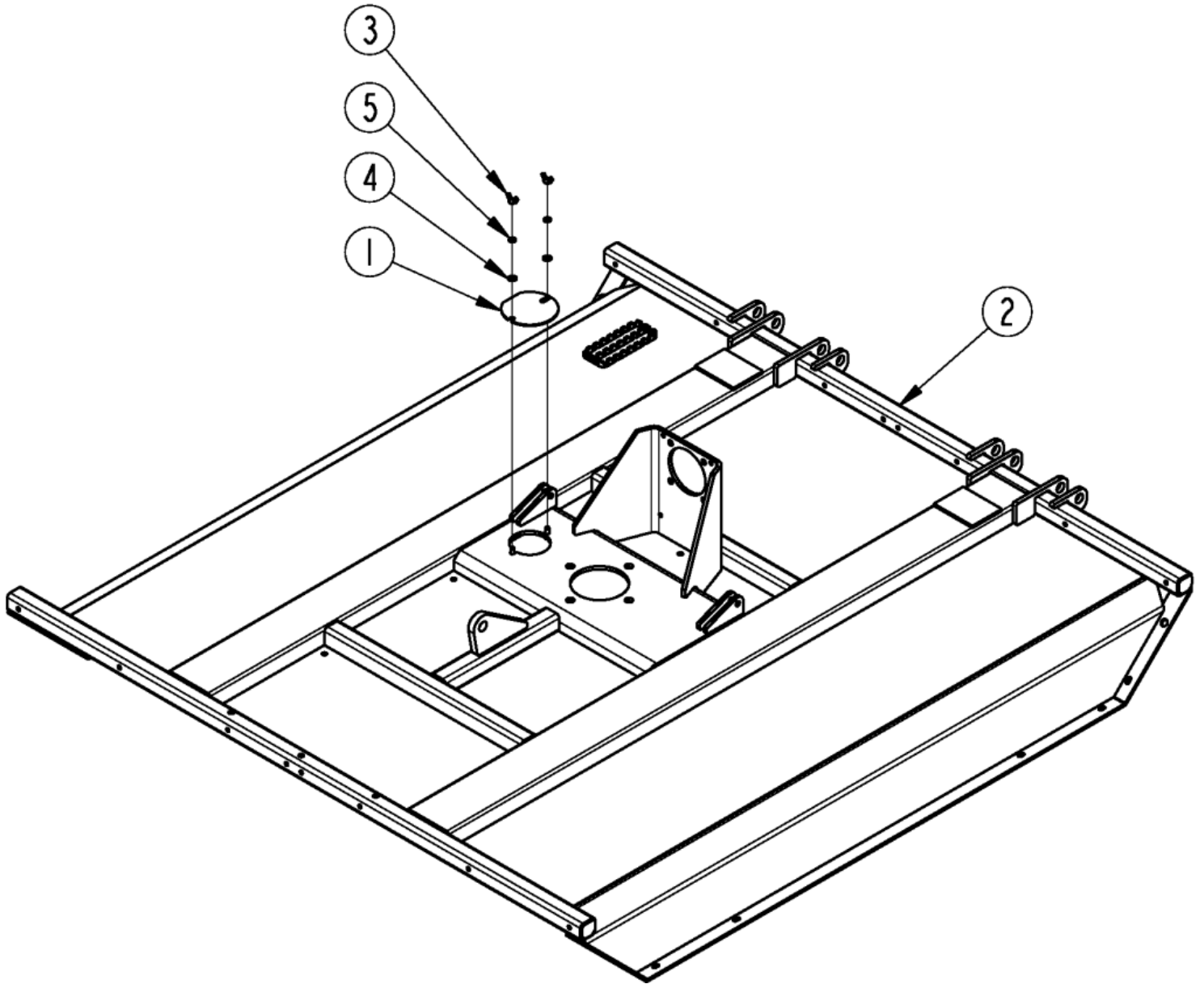


Applies to Models: AP-SC2560

Ref.	Part No.	Part Description	Comments
	DWG 37886	Drawing Image Number	
1	312-647D	BLADE BOLT ACCESS COVER	
2	326-823H	DECK 60"	
3	803-231C	NUT WING 3/8-16 PLT	
4	804-012C	WASHER FLAT 3/8 SAE PLT	
5	804-013C	WASHER LOCK SPRING 3/8 PLT	

Deck 72" S/N 1108075K-

Applies to Models: AP-SC2572



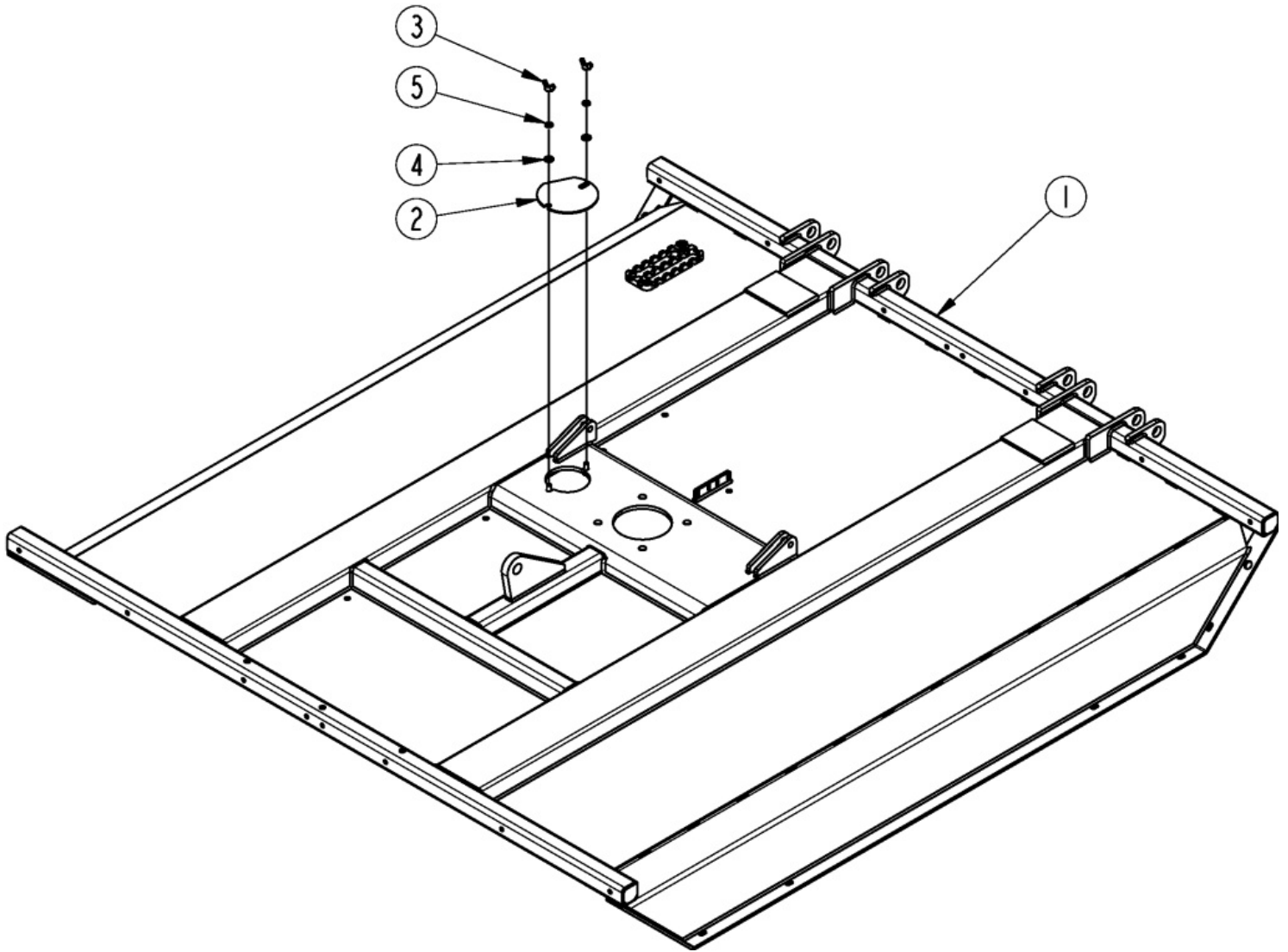
Deck 72" S/N 1108075K-

Applies to Models: AP-SC2572

Ref.	Part No.	Part Description	Comments
	DWG 39625	Drawing Image Number	
1	312-647D	BLADE BOLT ACCESS COVER	
2	326-831H	DECK 72"	Obsolete
3	803-231C	NUT WING 3/8-16 PLT	
4	804-012C	WASHER FLAT 3/8 SAE PLT	
5	804-013C	WASHER LOCK SPRING 3/8 PLT	

Deck 72" S/N 1108076K+

Applies to Models: AP-SC2572



Deck 72" S/N 1108076K+

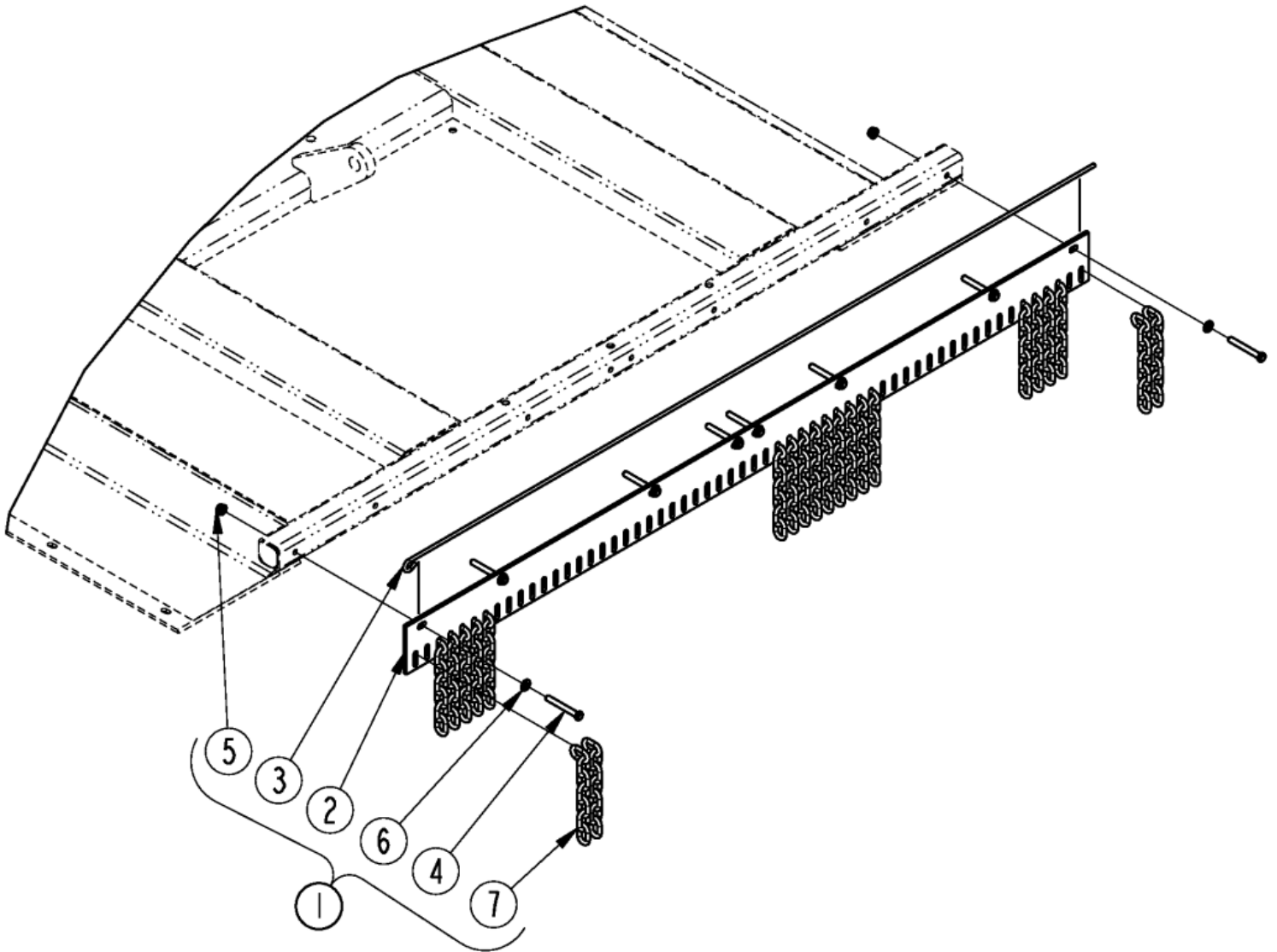
Applies to Models: AP-SC2572

Ref.	Part No.	Part Description	Comments
	DWG 76397	Image No.	
1	327-372H	DECK 72"	
2	338-015D	BLADE BOLT ACCESS COVER	
3	803-231C	NUT WING 3/8-16 PLT	
4	804-012C	WASHER FLAT 3/8 SAE PLT	
5	804-013C	WASHER LOCK SPRING 3/8 PLT	

Kubota
Guard Chain Front S/N 1002069K-

Section 2: Cutter Assembly

Applies to Models: AP-SC2572, AP-SC2560



Guard Chain Front S/N 1002069K-

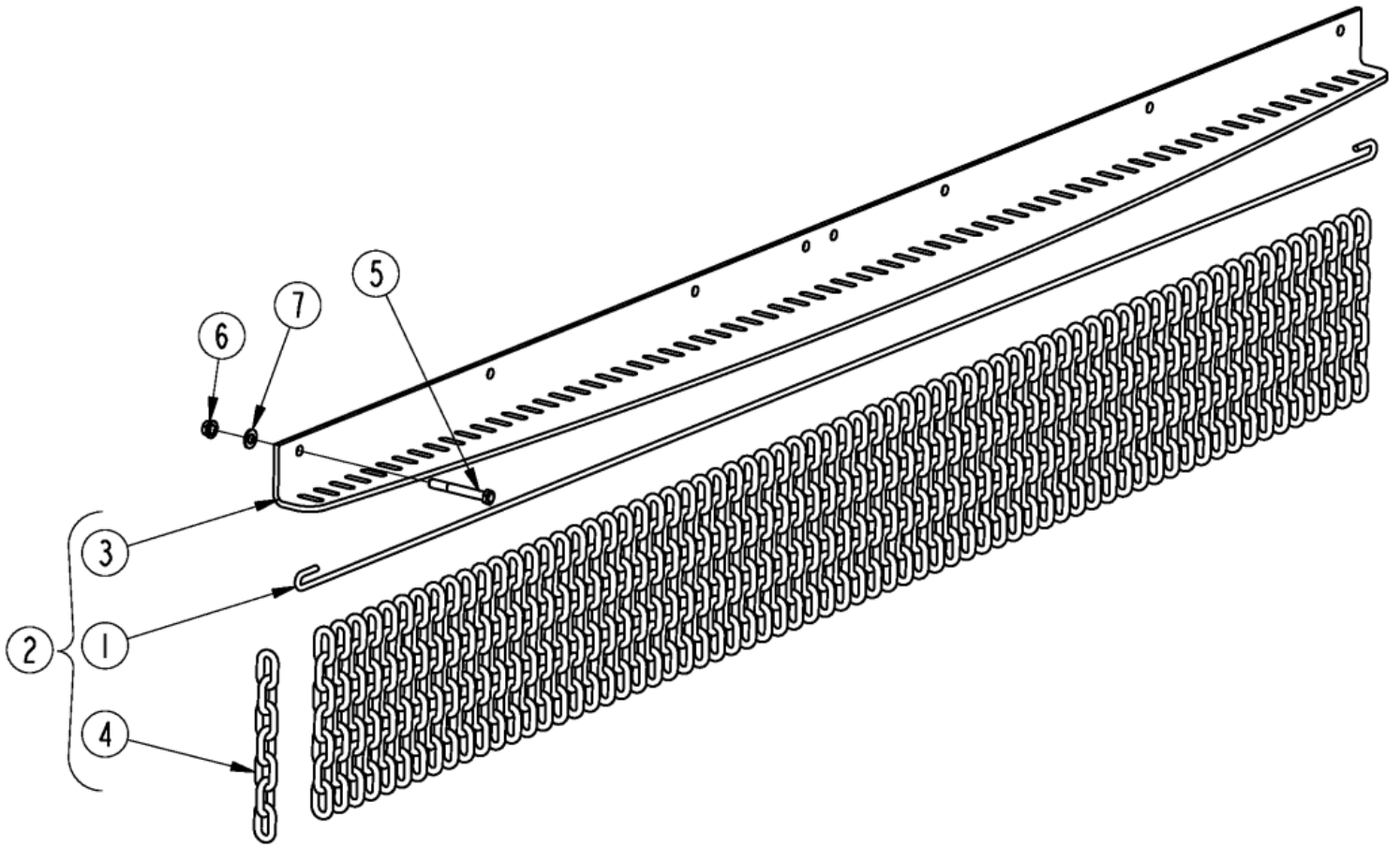
Applies to Models: AP-SC2572, AP-SC2560

Ref.	Part No.	Part Description	Comments
	DWG 37887	Drawing Image Number	
1	326-008K	FRONT CHAIN GUARD	AP-SC2560
1	326-077K	FRONT GUARD ASSY	AP-SC2572
2	326-256D	FRONT CHAIN GUARD MOUNT	AP-SC2560
2	326-391D	FRONT CHAIN GUARD MOUNT	AP-SC2572
3	318-617D	ROUND ROD .25 X 68.50	AP-SC2560
3	326-283D	RPBY 318-617D	(Obsolete) AP-SC2560
3	326-538D	ROUND ROD 1/4 X 80 3/4	AP-SC2572
3	326-392D	RPBY 326-538D	(Obsolete) AP-SC2572
4	802-024C	HHCS 3/8-16X3 GR5	
5	803-198C	NUT HEX WHIZ 3/8-16 PLT	
6	804-012C	WASHER FLAT 3/8 SAE PLT	
7	890-393C	CHAIN WELD 5/16 GR 43 X 7-LINK	

Kubota
Guard Chain Front S/N 1002070K+

Section 2: Cutter Assembly

Applies to Models: AP-SC2572, AP-SC2560



Guard Chain Front S/N 1002070K+

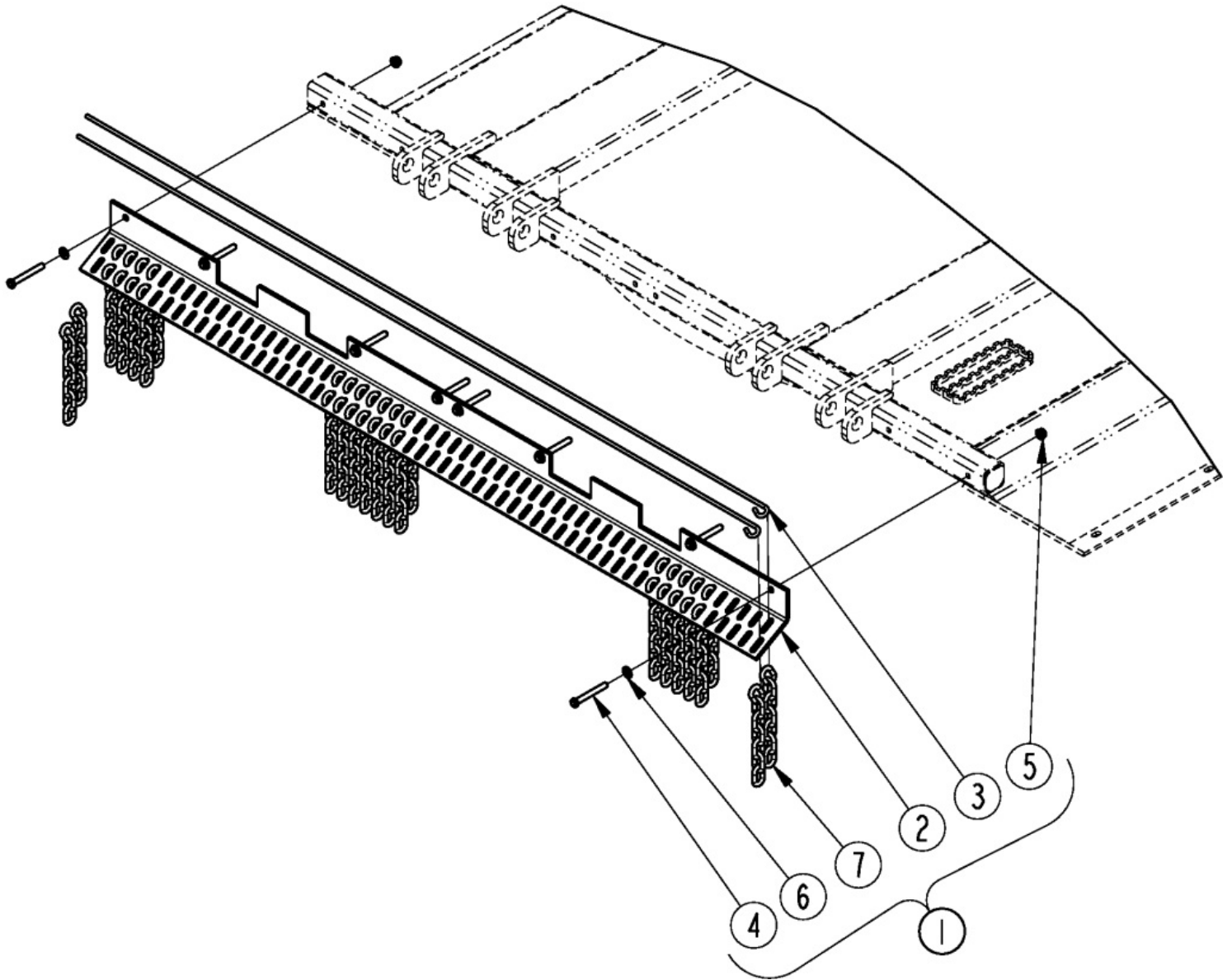
Applies to Models: AP-SC2572, AP-SC2560

Ref.	Part No.	Part Description	Comments
	DWG 39954	Drawing Image Number	
1	318-617D	ROUND ROD .25 X 68.50	SC2560
1	326-283D	RPBY 318-617D	(Obsolete) SC2560
1	326-538D	ROUND ROD 1/4 X 80 3/4	SC2572
1	326-392D	RPBY 326-538D	(Obsolete) SC2572
2	326-859K	CHAIN GUARD FRONT	SC2560
2	326-855K	GUARD FRONT	SC2572
3	327-527D	CHAIN GUARD 60"	SC2560
3	327-525D	GUARD FRONT	SC2572
4	890-393C	CHAIN WELD 5/16 GR 43 X 7-LINK	
5	802-024C	HHCS 3/8-16X3 GR5	
6	803-198C	NUT HEX WHIZ 3/8-16 PLT	
7	804-012C	WASHER FLAT 3/8 SAE PLT	

Kubota
Guard Chain Rear

Section 2: Cutter Assembly

Applies to Models: AP-SC2572, AP-SC2560

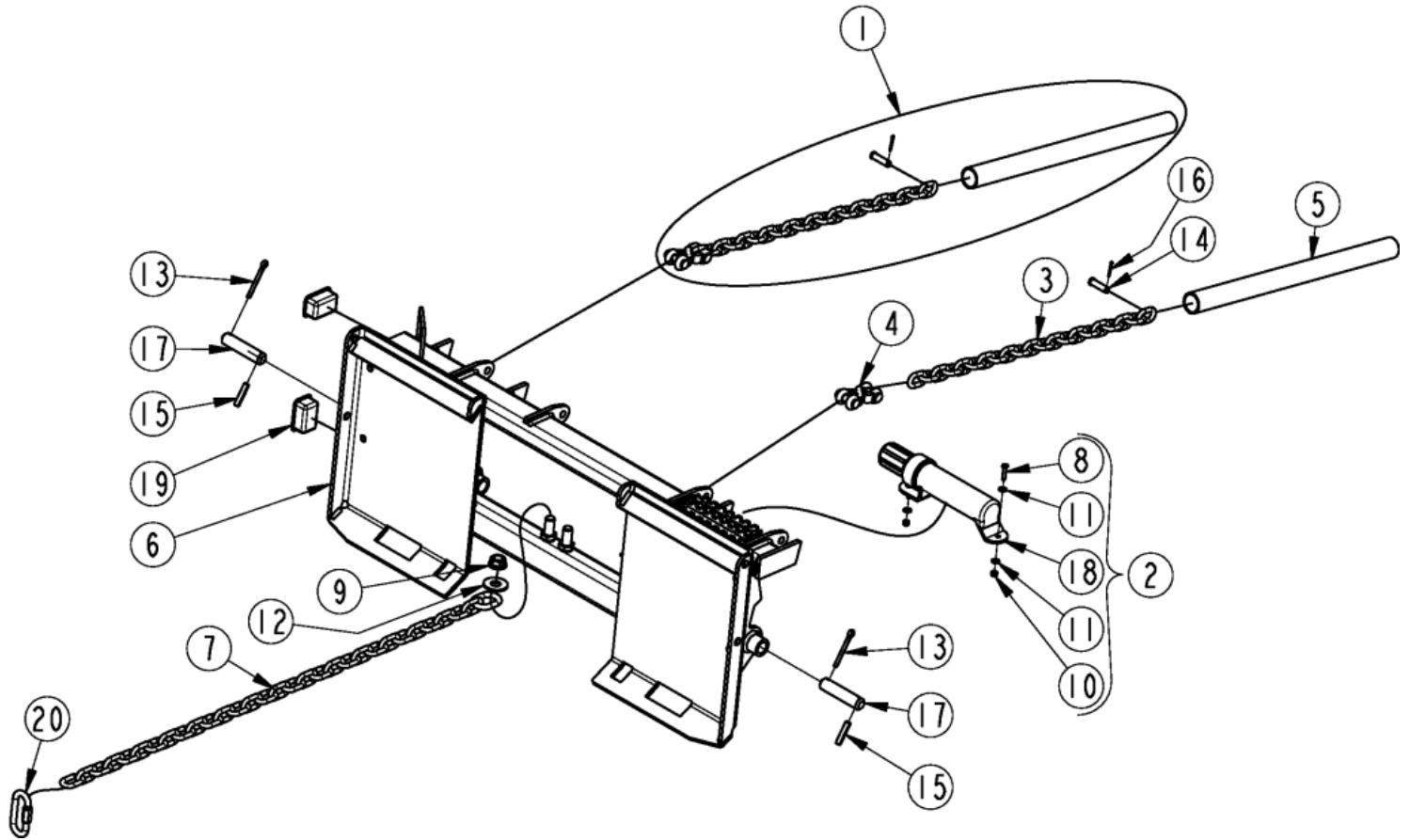


Guard Chain Rear

Applies to Models: AP-SC2572, AP-SC2560

Ref.	Part No.	Part Description	Comments
	DWG 37888	Drawing Image Number	
1	326-007K	REAR DOUBLE CHAIN GUARD	AP-SC2560
1	326-078K	REAR GUARD ASSY	AP-SC2572
2	326-255D	REAR DOUBLE CHAIN MOUNT	AP-SC2560
2	326-393D	REAR DOUBLE CHAIN MOUNT	AP-SC2572
3	318-617D	ROUND ROD .25 X 68.50	AP-SC2560
3	326-283D	RPBY 318-617D	(Obsolete) AP-SC2560
3	326-538D	ROUND ROD 1/4 X 80 3/4	AP-SC2572
3	326-392D	RPBY 326-538D	(Obsolete) AP-SC2572
4	802-024C	HHCS 3/8-16X3 GR5	
5	803-198C	NUT HEX WHIZ 3/8-16 PLT	
6	804-012C	WASHER FLAT 3/8 SAE PLT	
7	890-393C	CHAIN WELD 5/16 GR 43 X 7-LINK	

Applies to Models: AP-SC2572, AP-SC2560



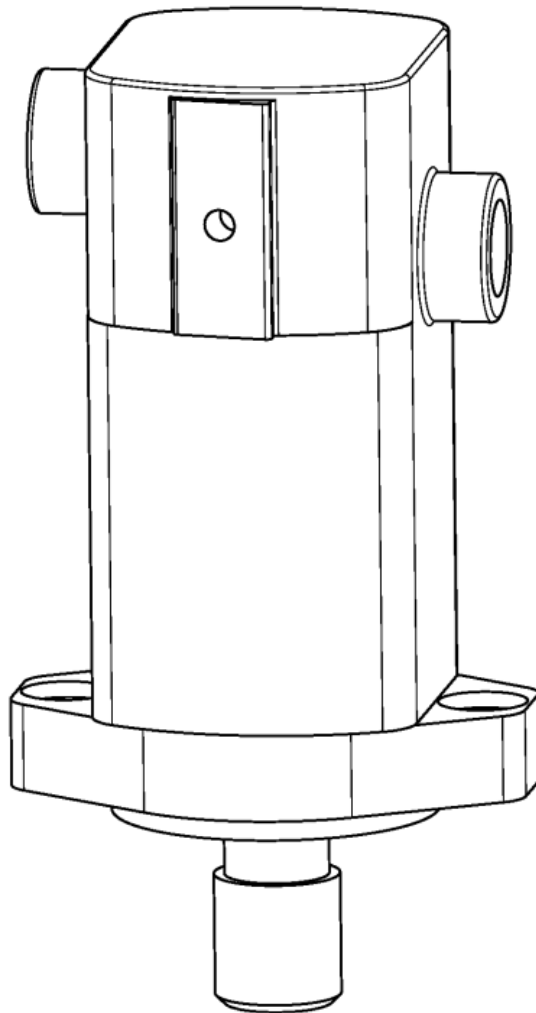
Applies to Models: AP-SC2572, AP-SC2560

Ref.	Part No.	Part Description	Comments
	DWG 39103	Image No.	
1	326-026K	FLOAT CHAIN ASSEMBLY	AP-SC2560
1	326-079K	FLOAT CHAIN ASSEMBLY	AP-SC2572
2	326-095S	MANUAL CONTAINER KIT, 1 1/4	
3	326-341D	FLOAT CHAIN 3/8 PROOF	AP-SC2560
3	326-394D	FLOAT CHAIN 3/8 PROOF	AP-SC2572
4	326-342D	CHAIN CLEVIS 7/16-1/2MID LINK	
5	326-370D	CHAIN COVER	AP-SC2560
5	326-395D	CHAIN COVER	AP-SC2572
6	326-842H	SC25 SERIES HITCH WELDMENT	
7	327-206D	HEIGHT ADJ. CHAIN	
8	802-224C	HHCS 1/4-20X1 1/4 GR5	
9	803-181C	NUT HEX FLANGE LOCK 3/4-10 PLT	
10	803-255C	NUT HEX NYLOCK 1/4-20	
11	804-007C	WASHER FLAT 1/4 SAE PLT	
12	804-024C	WASHER FLAT 3/4 USS PLT	
13	805-085C	PIN COTTER 5/16 X 2 1/2	
14	805-127C	PIN CLVS .50X1.52 USBL	
15	805-249C	PIN ROLL 3/8 X 2 PLT	
16	805-363C	PIN COTTER 1/8 X 1	
17	805-384C	PIN CLVS HDLS 1.0X3.23 USBL	
18	816-504C	MANUAL STORAGE CONTAINER	
19	817-387C	PLASTIC END CAP 3X2X3/16 WL TB	
20	890-931C	QUICK LINK 1/2"	

Hydraulic Motor 4.9 Cubic Inch Eaton (850-090C)

Applies to Models: AP-SC2572, AP-SC2560

NO PARTS AVAILABLE FOR THIS MOTOR AT THIS TIME



Hydraulic Motor 4.9 Cubic Inch Eaton (850-090C)

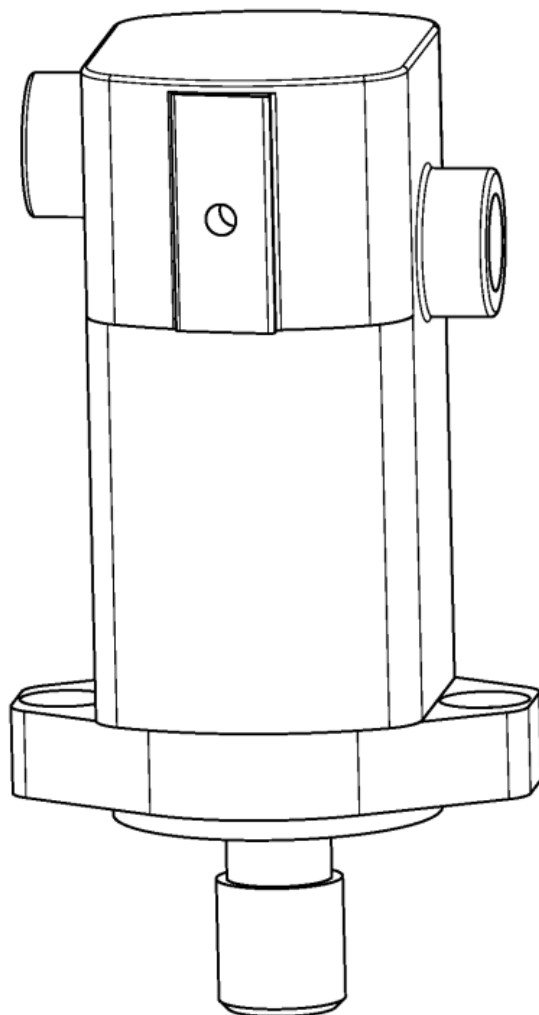
Applies to Models: AP-SC2572, AP-SC2560

Ref.	Part No.	Part Description	Comments
-------------	-----------------	-------------------------	-----------------

Hydraulic Motor 6.2 Cubic Inch Eaton (850-091C)

Applies to Models: AP-SC2572, AP-SC2560

NO PARTS AVAILABLE FOR THIS MOTOR AT THIS TIME



Hydraulic Motor 6.2 Cubic Inch Eaton (850-091C)

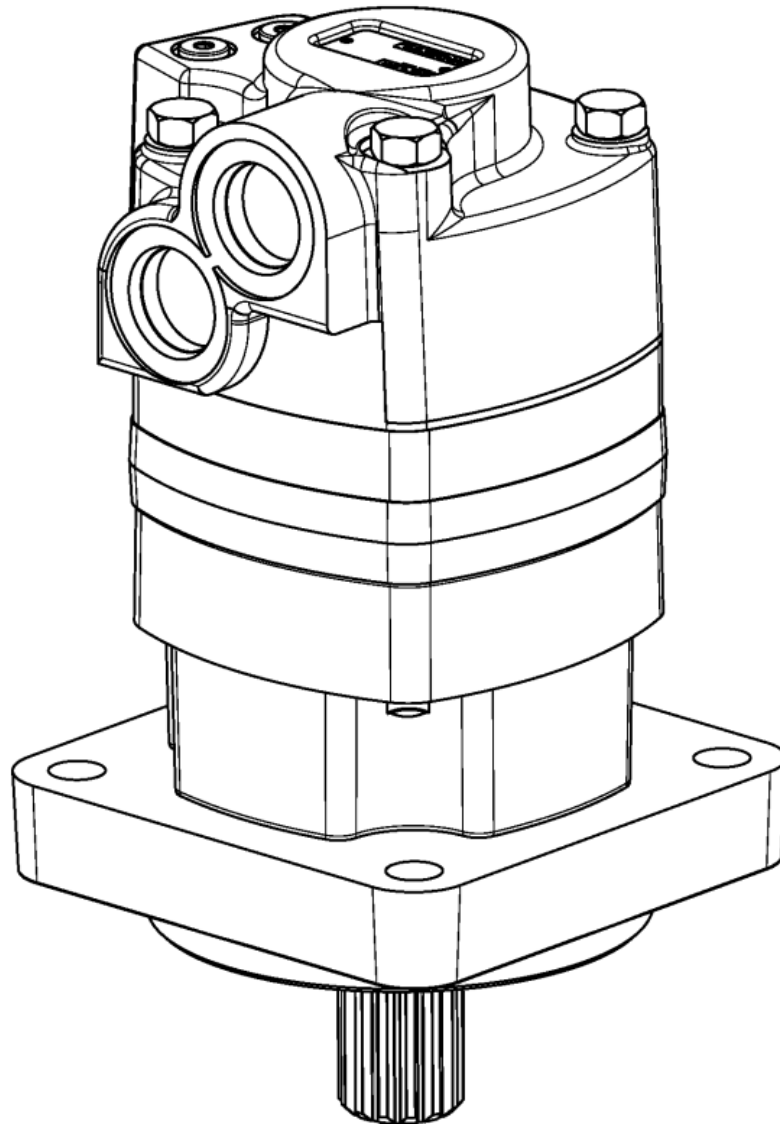
Applies to Models: AP-SC2572, AP-SC2560

Ref.	Part No.	Part Description	Comments
-------------	-----------------	-------------------------	-----------------

Hydraulic Motor 6.7 Cubic Inch Eaton (850-521C)

Applies to Models: AP-SC2572

NO PARTS AVAILABLE FOR THIS MOTOR AT THIS TIME



Hydraulic Motor 6.7 Cubic Inch Eaton (850-521C)

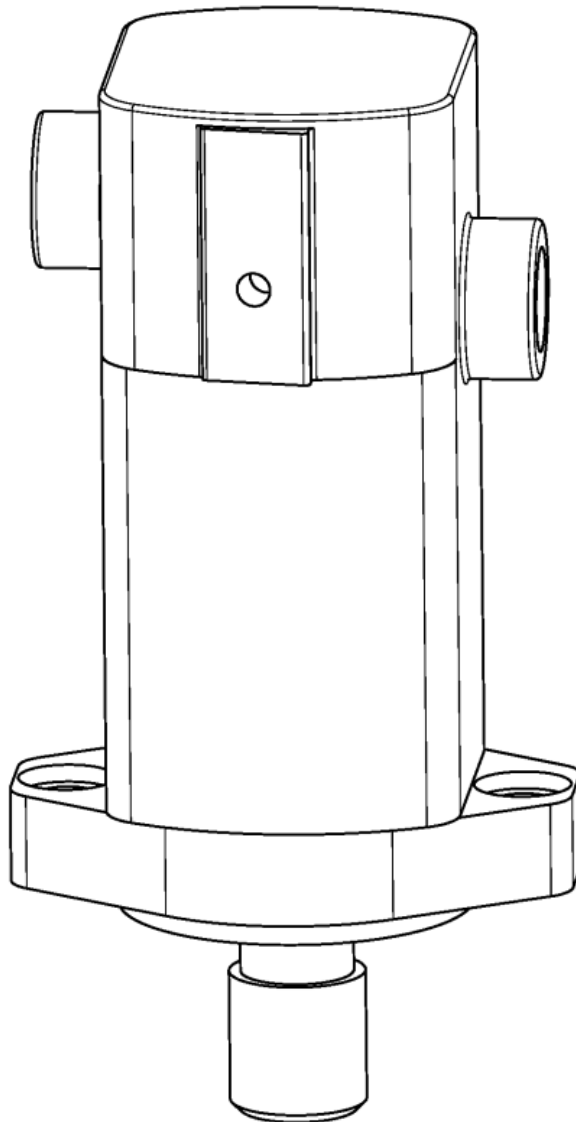
Applies to Models: AP-SC2572

Ref.	Part No.	Part Description	Comments
------	----------	------------------	----------

Hydraulic Motor 7.9 Cubic Inch Eaton (850-029C)

Applies to Models: AP-SC2572, AP-SC2560

NO PARTS AVAILABLE FOR THIS MOTOR AT THIS TIME



Hydraulic Motor 7.9 Cubic Inch Eaton (850-029C)

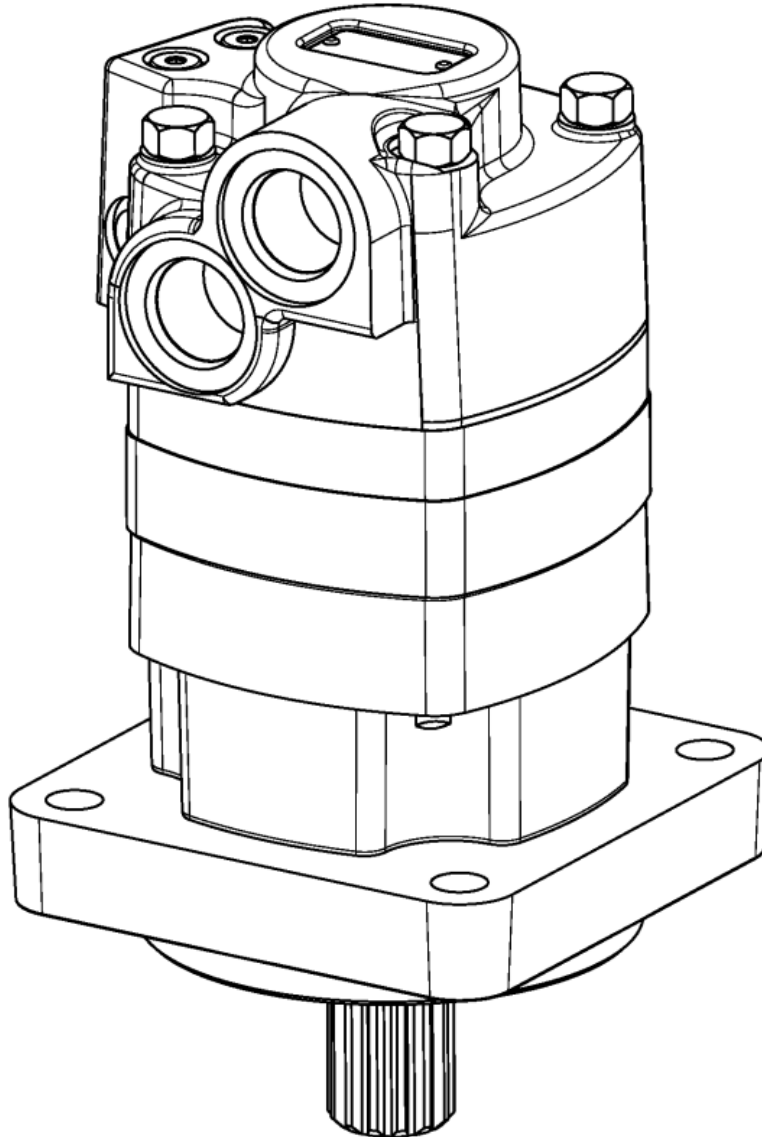
Applies to Models: AP-SC2572, AP-SC2560

Ref.	Part No.	Part Description	Comments
-------------	-----------------	-------------------------	-----------------

Hydraulic Motor 7.9 Cubic Inch Eaton (850-522C)

Applies to Models: AP-SC2572

NO PARTS AVAILABLE FOR THIS MOTOR AT THIS TIME



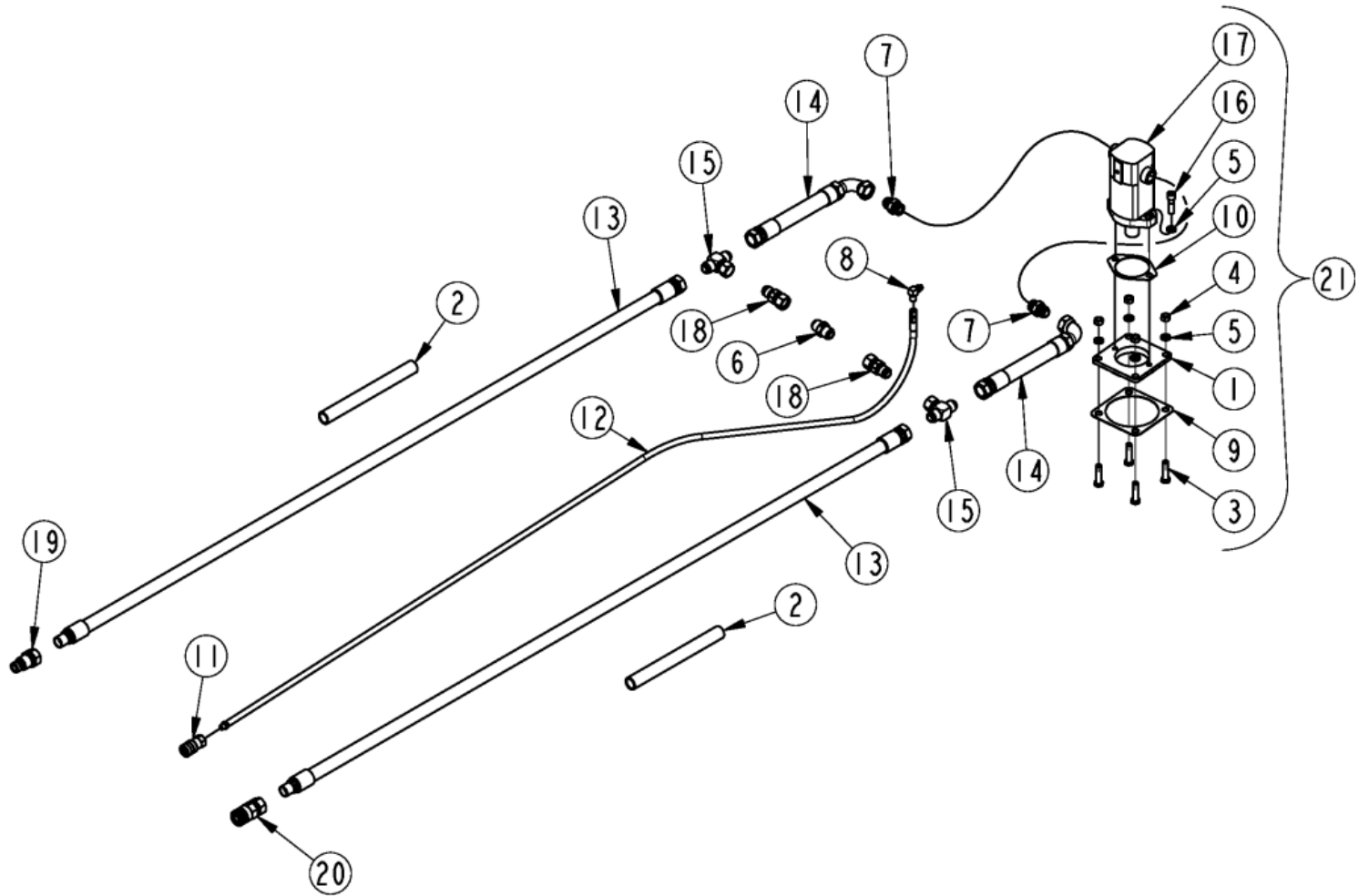
Hydraulic Motor 7.9 Cubic Inch Eaton (850-522C)

Applies to Models: AP-SC2572

Ref.	Part No.	Part Description	Comments
------	----------	------------------	----------

SC2560 Motor & Hose Assembly (Eaton)

Applies to Models: AP-SC2560



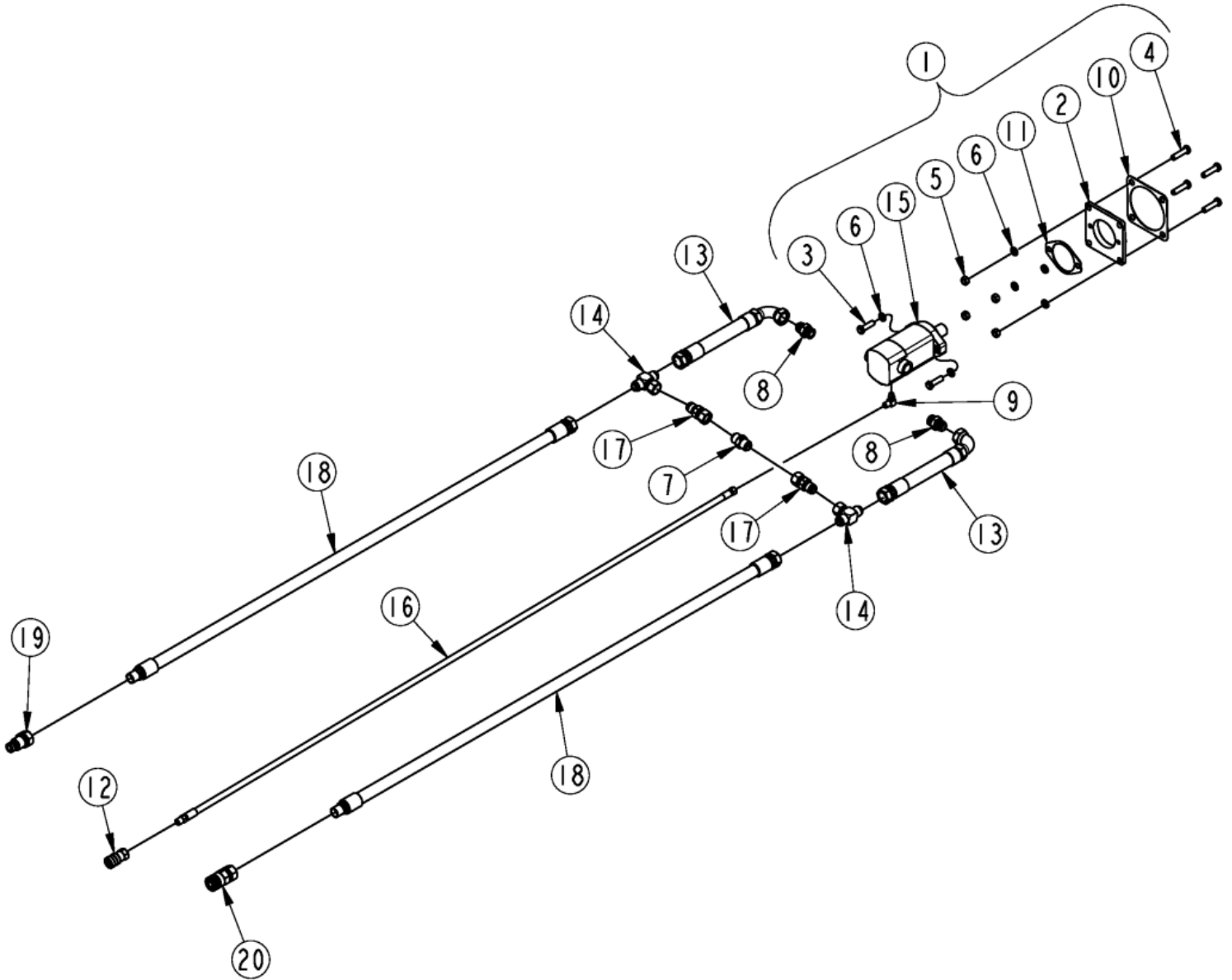
SC2560 Motor & Hose Assembly (Eaton)

Applies to Models: AP-SC2560

Ref.	Part No.	Part Description	Comments
	DWG 39181	Image No.	
1	327-359D	ADAPTOR SAE C 4 BOLT TO SAE A	
2	331-451D	HOSE WRAP, 1FT	
3	802-128C	HHCS 1/2-13X2 GR5	
4	803-020C	NUT HEX 1/2-13 PLT	
5	804-015C	WASHER LOCK SPRING 1/2 PLT	
6	810-715C	VALVE 3/4 IN-LINE CHECK	
7	811-408C	AD 1 1/16MORB 1 1/16MJIC	
8	811-719C	EL 90 9/16MJIC 7/16MORB	
9	816-182C	GASKET - MOTOR	
10	816-887C	GASKET SAE A 2 BOLT	
11	841-539C	CP 3/8 FEMALE QD 3/8FNPT	
12	841-545C	HH3/8R17 096 3/8MNPT9/16FJIC	
13	841-566C	HH3/4R17 83.5 1.06FJIC MORB	
14	841-656C	HH3/4R2 13.5 1.06FJIC(1)90	
15	841-676C	TEE 1.06FJIC 1.06MJIC 1.06MJIC	
16	842-419C	HSHCS 1/2-13X1 3/4 PLT	
17	850-090C	HYD MOTOR 4.9 CUIN/REV	
17	850-091C	HYD MOTOR 6.2 CUIN/REV	
17	850-029C	HYD MOTOR 7.9 CUIN/REV 1.06FOR	
18	851-683C	AD 1 1/16FJIC 1 1/16MJIC	
19	851-947C	CUP 1 1/16FORB MALE QUICK CPLR	
19	811-744C	RPBY 851-947C	Obsolete
20	851-948C	CUP 1 1/16FORB FML QUICK CPLR	
20	811-745C	RPBY 851-948C	Obsolete
21	326-820A	HYD MOTOR BUNDLE 11-17 GPM	
21	326-821A	HYD MOTOR BUNDLE 18-23 GPM	
21	326-822A	HYD MOTOR BUNDLE 24-30 GPM	

SC2572 Motor & Hose Assembly (Eaton) S/N 1108075K-

Applies to Models: AP-SC2572



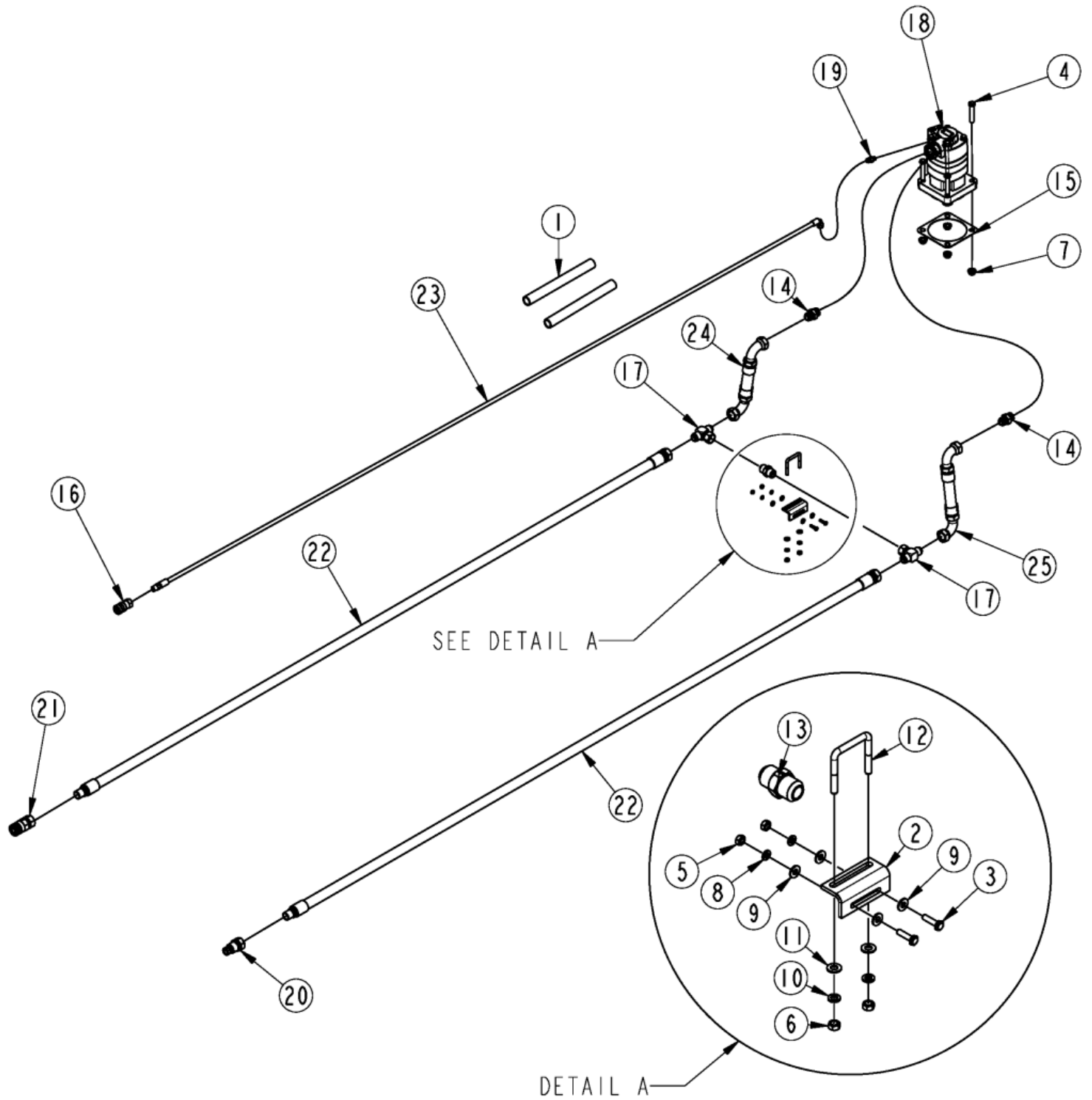
SC2572 Motor & Hose Assembly (Eaton) S/N 1108075K-

Applies to Models: AP-SC2572

Ref.	Part No.	Part Description	Comments
	DWG 76264	Image No.	
1	326-820A	HYD MOTOR BUNDLE 11-17 GPM	11-17 GPM
1	326-821A	HYD MOTOR BUNDLE 18-23 GPM	18-23 GPM
1	326-822A	HYD MOTOR BUNDLE 24-30 GPM	24-30 GPM
2	327-359D	ADAPTOR SAE C 4 BOLT TO SAE A	
3	802-082C	HHCS 1/2-13X1 3/4 GR5 FTHD	
4	802-128C	HHCS 1/2-13X2 GR5	
5	803-020C	NUT HEX 1/2-13 PLT	
6	804-015C	WASHER LOCK SPRING 1/2 PLT	
7	810-715C	VALVE 3/4 IN-LINE CHECK	
8	811-408C	AD 1 1/16MORB 1 1/16MJIC	
9	811-719C	EL 90 9/16MJIC 7/16MORB	
10	816-182C	GASKET - MOTOR	
11	816-887C	GASKET SAE A 2 BOLT	
12	841-539C	CP 3/8 FEMALE QD 3/8FNPT	
13	841-656C	HH3/4R2 13.5 1.06FJIC(1)90	
14	841-676C	TEE 1.06FJIC 1.06MJIC 1.06MJIC	
15	850-090C	HYD MOTOR 4.9 CUIN/REV	
15	850-091C	HYD MOTOR 6.2 CUIN/REV	
15	850-029C	HYD MOTOR 7.9 CUIN/REV 1.06FOR	
16	841-545C	HH3/8R17 096 3/8MNPT9/16FJIC	
17	851-683C	AD 1 1/16FJIC 1 1/16MJIC	
18	841-566C	HH3/4R17 83.5 1.06FJIC MORB	
19	851-947C	CUP 1 1/16FORB MALE QUICK CPLR	
19	811-744C	RPBY 851-947C	Obsolete
20	851-948C	CUP 1 1/16FORB FML QUICK CPLR	
20	811-745C	RPBY 851-948C	Obsolete

SC2572 Motor & Hose Assembly (Eaton) S/N 1108076K+

Applies to Models: AP-SC2572



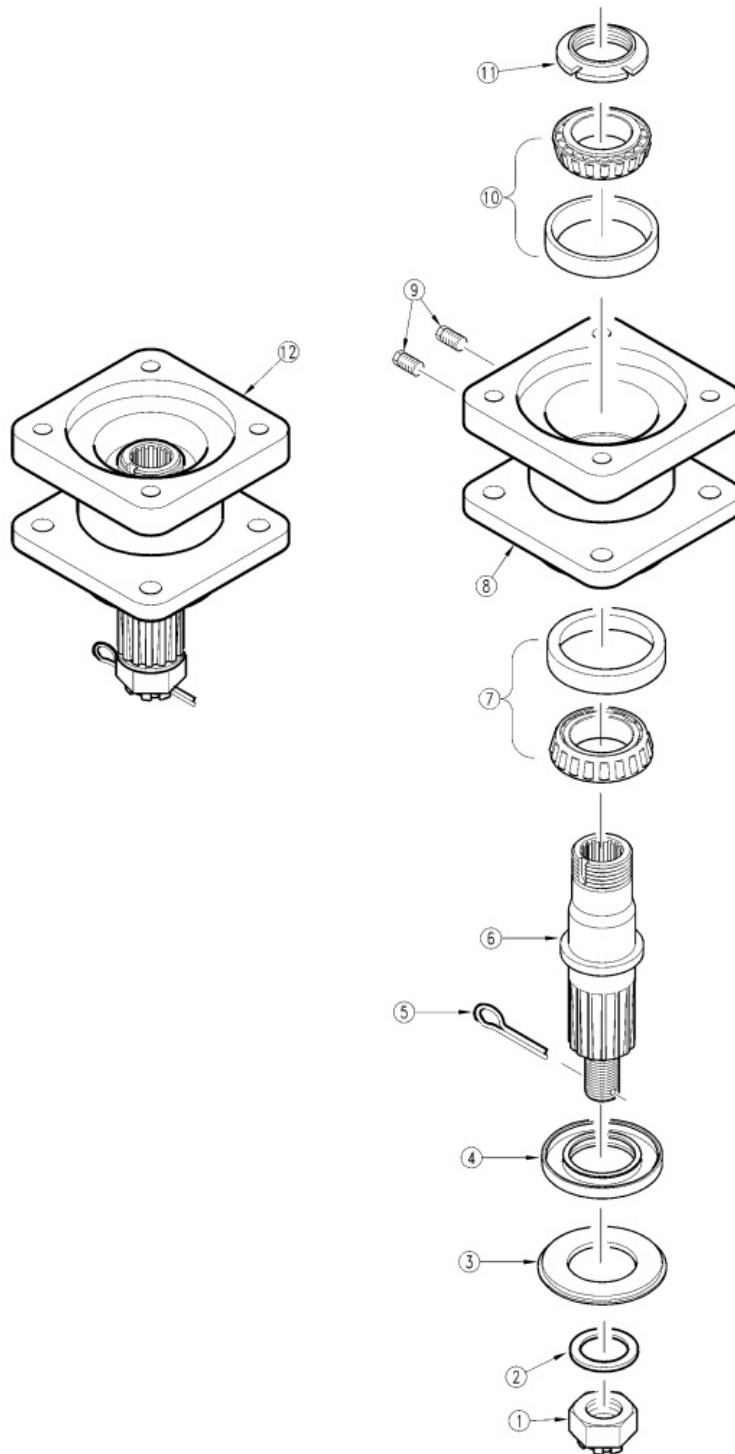
SC2572 Motor & Hose Assembly (Eaton) S/N 1108076K+

Applies to Models: AP-SC2572

Ref.	Part No.	Part Description	Comments
	DWG 76403	Image No.	
	327-375A	MOTOR BUNDLE 24-31 GPM	24-31 GPM
	327-374A	MOTOR BUNDLE 18-23 GPM	18-23 GPM
		*	
1	331-451D	HOSE WRAP, 1FT	
2	338-014D	HOSE CLAMP	
3	802-005C	HHCS 1/4-20X1 GR5	
4	802-226C	HHCS 1/2-13X2 3/4 GR5	
5	803-006C	NUT HEX 1/4-20 PLT	
6	803-008C	NUT HEX 5/16-18 PLT	
7	803-169C	NUT HEX FLG LOCK 1/2-13 PLT	
8	804-006C	WASHER LOCK SPRING 1/4 PLT	
9	804-007C	WASHER FLAT 1/4 SAE PLT	
10	804-009C	WASHER LOCK SPRING 5/16 PLT	
11	804-036C	WASHER FLAT 5/16 SAE PLT	
12	806-094C	U-BOLT 5/16-18 X 2 X 2 1/8	
13	810-715C	VALVE 3/4 IN-LINE CHECK	
14	811-408C	AD 1 1/16MORB 1 1/16MJIC	
15	816-182C	GASKET - MOTOR	
16	841-539C	CP 3/8 FEMALE QD 3/8FNPT	
17	841-676C	TEE 1.06FJIC 1.06MJIC 1.06MJIC	
18	850-522C	HYD MTR 7.9 CUIN	24-31 GPM
18	850-521C	HYD. MTR 6.7 CUIN	18-23 GPM
19	851-755C	AD 7/16MORB 9/16MJIC	
20	851-947C	CUP 1 1/16FORB MALE QUICK CPLR	
21	851-948C	CUP 1 1/16FORB FML QUICK CPLR	
22	861-264C	HH3/4R13 108.8 1.06MORB1.06FJC	
23	861-266C	HH1/4R2 120.8 3/8MNPT9/16FJC90	
24	871-352C	HH3/4 10.25 1.06FJIC(2)SWT90	
25	871-353C	HH3/4 11.38 1.06FJIC(2)SWT90	

Kubota
Spindle Hub Assembly (826-110C)

Applies to Models: AP-SC2560



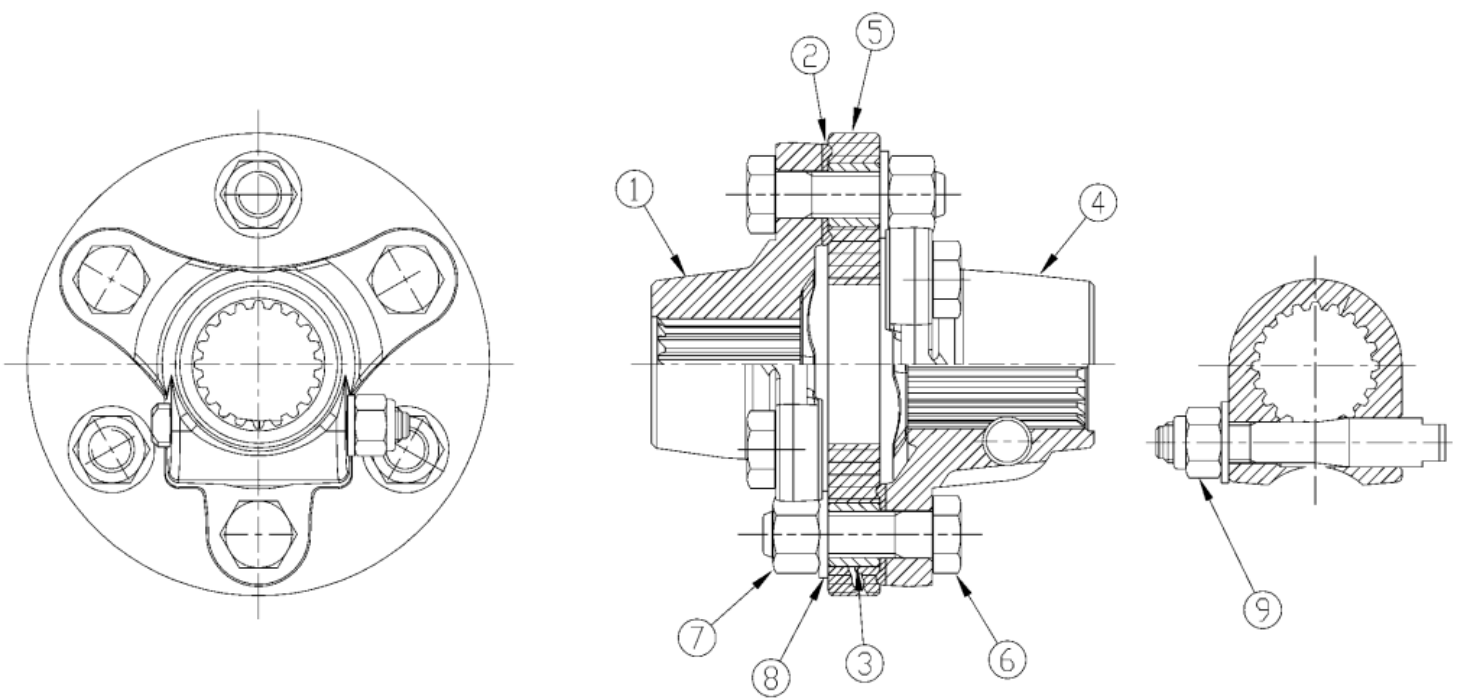
Spindle Hub Assembly (826-110C)

Applies to Models: AP-SC2560

Ref.	Part No.	Part Description	Comments
	DWG 12276	Drawing Image Number	
1	8.2.2.00555	CO NUT, CASTLE M30 X 2	
2	0.139.7101.00	CO BLANK WASHER	
3	0.139.7100.00	CO SEAL RETAINER	
4	8.7.1.01107	CO SEAL (50X90X10)	
5	8.4.7.00146	COTTER PIN B6 X 60	
6	0.772.3000.00	CO SPLINE SHAFT	
7	822-214C	BRG CUP/CONE SET 30210	
7	04-011	RPBY 822-214C	Obsolete
7	8.0.9.00469	RPBY 04-011	Obsolete
8	0.772.1303.00	CO SPINDLE HOUSING	
9	8.6.5.00006	CO OIL PLUG 3/8	
10	8.0.9.00143	CO BRG 30209 TAPERED	
11	0.278.7104.00	CO NUT LOCK M45 X 1.5	
11	0.278.7104.00	CO NUT LOCK M45 X 1.5	
12	826-110C	SPINDLE HUB ASSY	Beige

Flex Coupler (826-548C)

Applies to Models: AP-SC2572



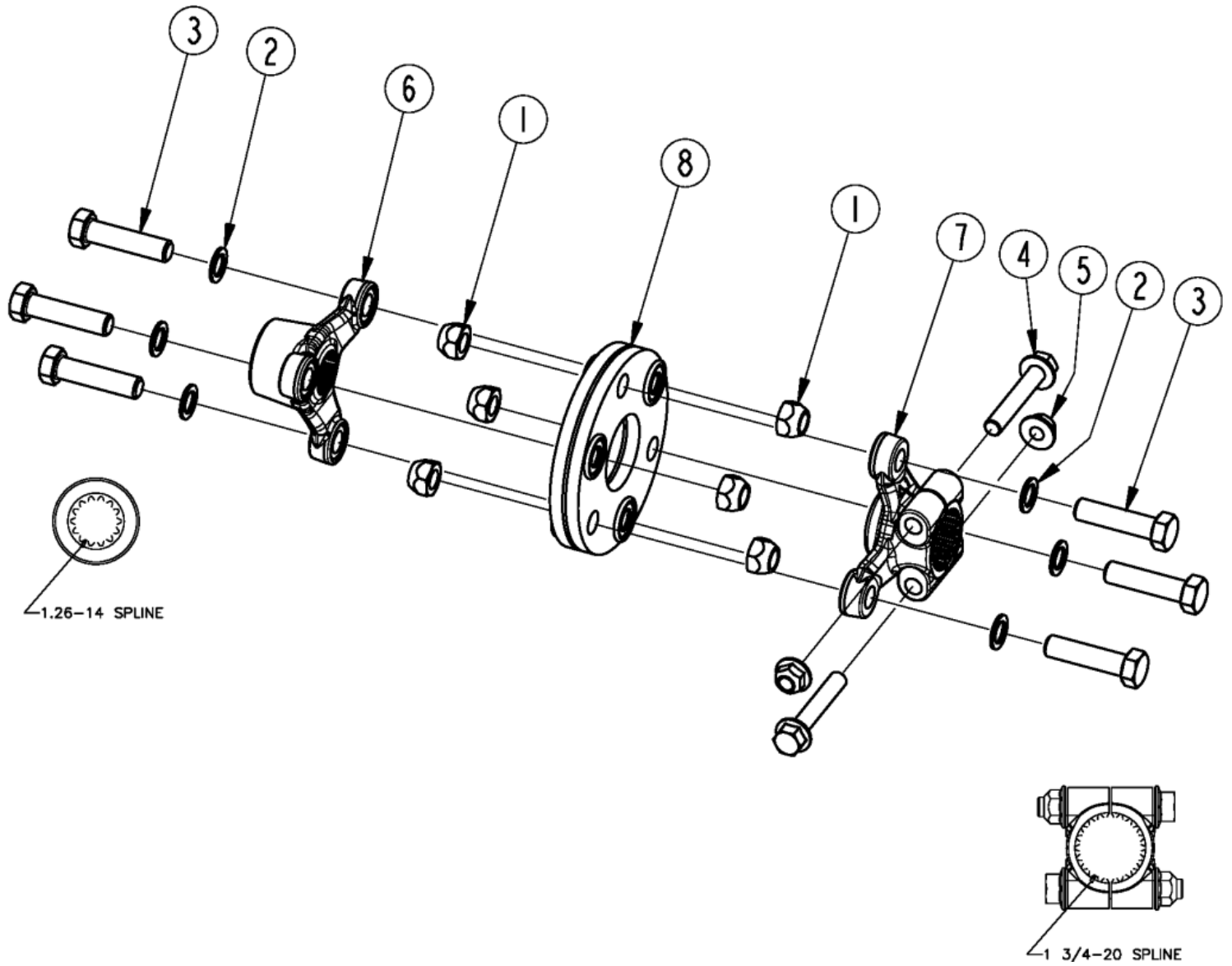
Flex Coupler (826-548C)

Applies to Models: AP-SC2572

Ref.	Part No.	Part Description	Comments
	DWG 25691 826-548C	Drawing Image Number DRVLN 6F 1.75-20 FLXCPLR *	
1	PE-0611131	EC CONNECTION HUB 12-24	
2	1235287	EC WSH. BD. 35MMO.D/16.5MMI.D	
3	1535275	EC BOLT BUSHING	
4	1705267	EC CONNECTION HUB	
5	19-075	FLEX COUPLER RUBBER DISK	
5	1785273	RPBY 19-075	Obsolete
6	6141660	EC BOLT	
7	6410716	EC NUT	
8	804-247C	WASHER FLAT M16 PLT	
8	6412016	REP BY 804-247C	Obsolete
9	6821484	CONICAL DOG KIT	

Flex Coupler (826-962C)

Applies to Models: AP-SC2572



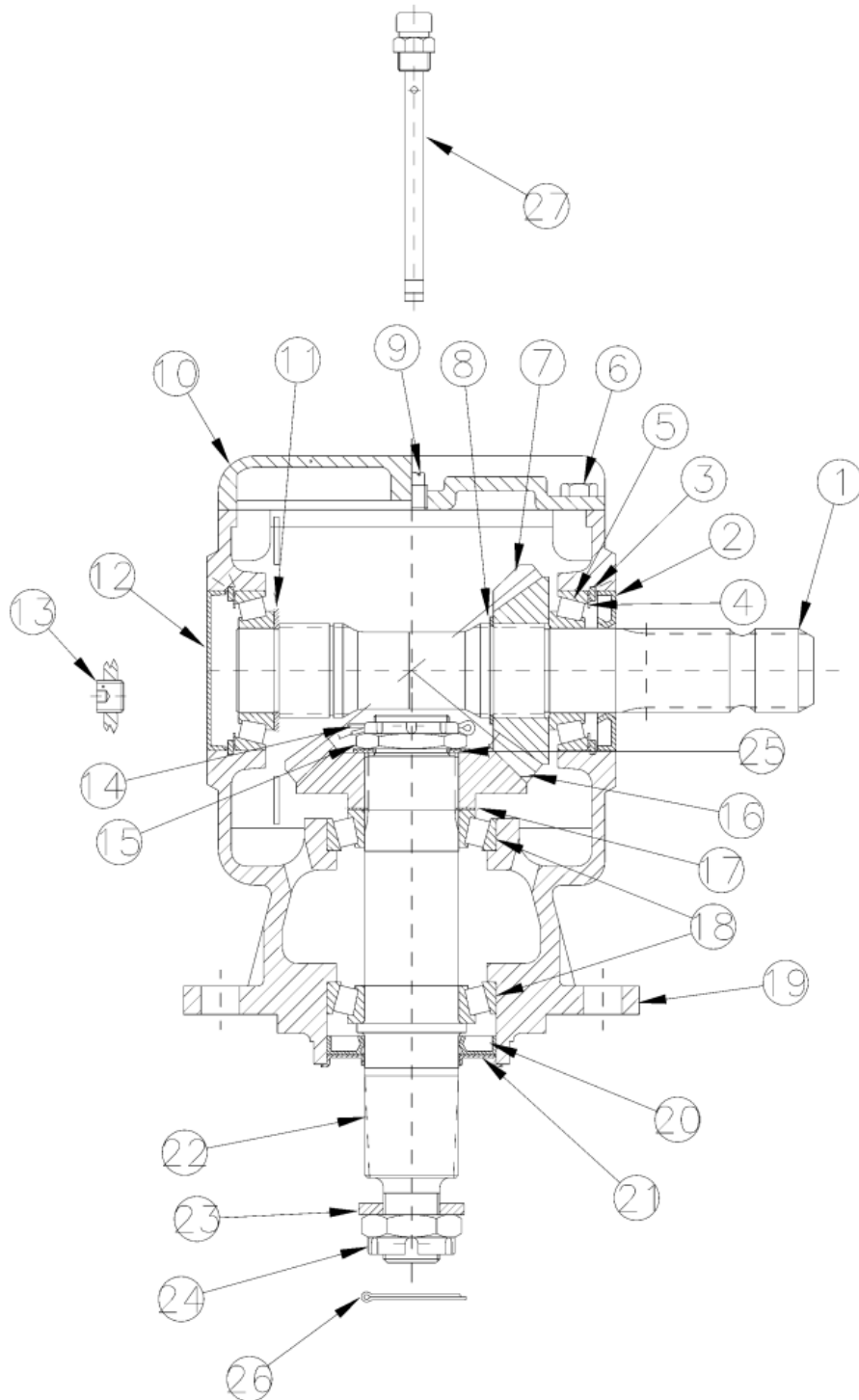
Flex Coupler (826-962C)

Applies to Models: AP-SC2572

Ref.	Part No.	Part Description	Comments
	DWG 74531 826-962C	Image No. DRVLN 6F 1.75-20 FLXCPLR *	Complete Assembly
1	11-10400	WEASLER NUT 5/8-18	
2	11-10401	WEASLER WASHER	
3	11-10635	WE BOLT, 5/8-18 X 2.50 GR 5	
4	11-20414	WE BOLT, 1/2-13 X 3.00 LG., FLG	
5	11-30017	WE LOCKNUT, 1/2-13 FLG	
6	81010-1019	WE SPIDER, 6" 1 1/4-14 SPLN	
7	81123-1270	WE SPIDER, 6" 1 3/4-20 SPLN	
8	19-33302	WEASLER FLEX CPLING REPAIR KIT	

Kubota
Gearbox (826-380C) Comer

Applies to Models: AP-SC2572



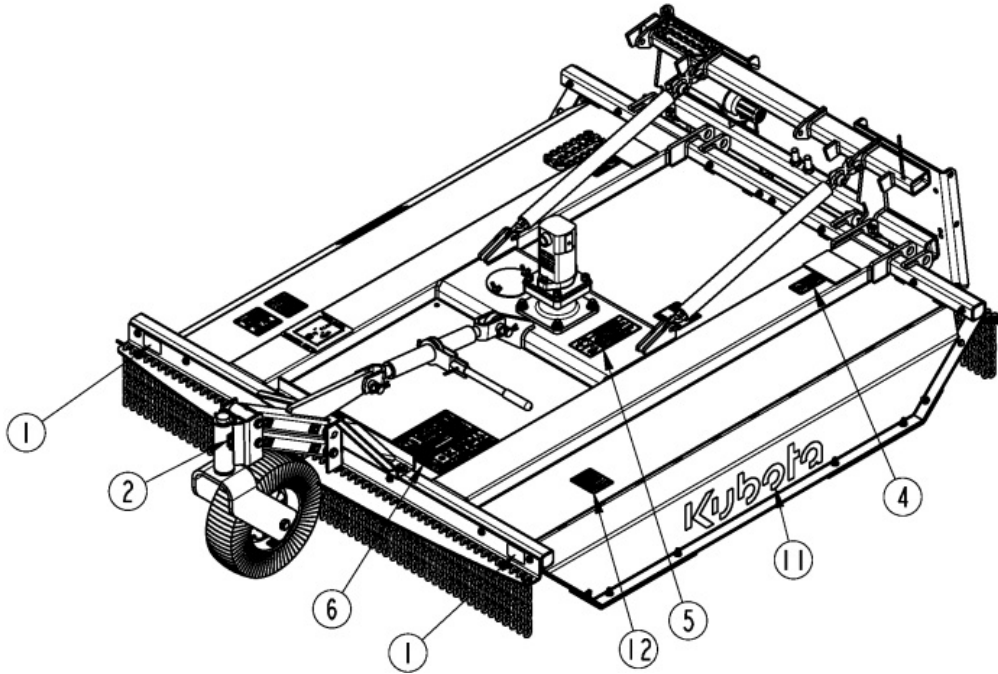
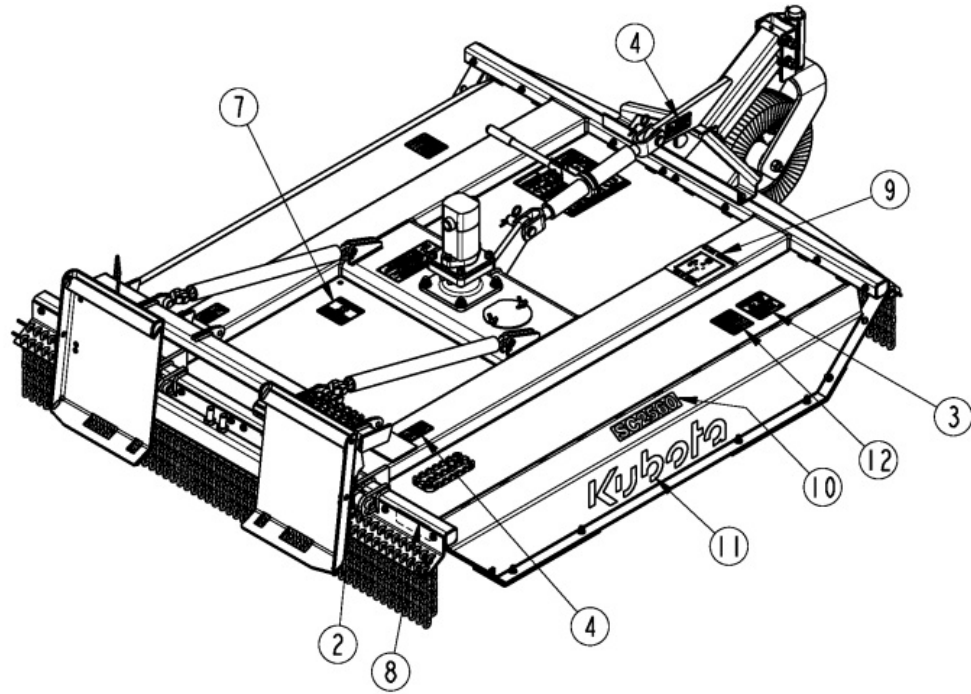
Gearbox (826-380C) Comer

Applies to Models: AP-SC2572

Ref.	Part No.	Part Description	Comments
	DWG 22264 826-380C	Drawing Image Number GBOX RC35 1.75-20 1.21:1 STD. *	
1	0.210.2001.00	CO INPUT SHAFT 1.75-20	
2	8.7.1.02348	CO DUST LIP (45X85X10)	
2	8.7.3.00331	RPBY 8.7.1.02348	Obsolete
3	8.5.2.00332	CO SNAP RING UNI 7437	
4	A.709.500	COMER SHIM KIT	
4	0.709.7500.00	RPBY A.709.500	Obsolete
5	8.0.9.00143	CO BRG 30209 TAPERED	
6	8.1.1.00501	CO BOLT M10X22 HHB	
7	0.210.5000.00	RPBY 2.210.5001.00	
8	8.5.1.00533	CO SNAP RING 50 UNI7435	
9	8.6.5.00006	CO OIL PLUG 3/8	
10	0.210.1300.00	CO COVER	
11	0.252.7525.00	CO SHIM 45.3X2.5	
12	0.121.7101.00	CO CAP	
13	8.6.6.00201	CO PLUG 3/8 (SOLID PLUG)	
14	8.4.7.02265	CO COTTER PIN B 5X60	
15	0.132.7107.00	CO NUT M40X1.5	
16	2.210.5001.00	CO PINION Z18 M6	
16	0.210.6000.00	RPBY 2.210.5001.00	Obsolete
17	A.712.500	COMER SHIM KIT	
17	0.712.7500.00	RPBY A.712.500	Obsolete
18	822-214C	BRG CUP/CONE SET 30210	
18	04-011	RPBY 822-214C	Obsolete
18	8.0.9.00469	RPBY 04-011	Obsolete
19	0.210.0300.00	CO CASTING & MACHINE	
20	8.7.1.01107	CO SEAL (50X90X10)	
21	0.139.7100.00	CO SEAL RETAINER	
22	0.210.3000.00	CO OUTPUT SHAFT	
23	0.139.7101.00	CO BLANK WASHER	
24	8.2.2.00555	CO NUT, CASTLE M30 X 2	
25	0.285.7510.00	CO SHIM 40.3 X 61.7 X 1	
26	8.4.7.00146	COTTER PIN B6 X 60	
27	0.210.7100.00	RPBY 826-490C *	

Notes: Oil Type 80-90W Capacity 6
Pints

Applies to Models: AP-SC2560

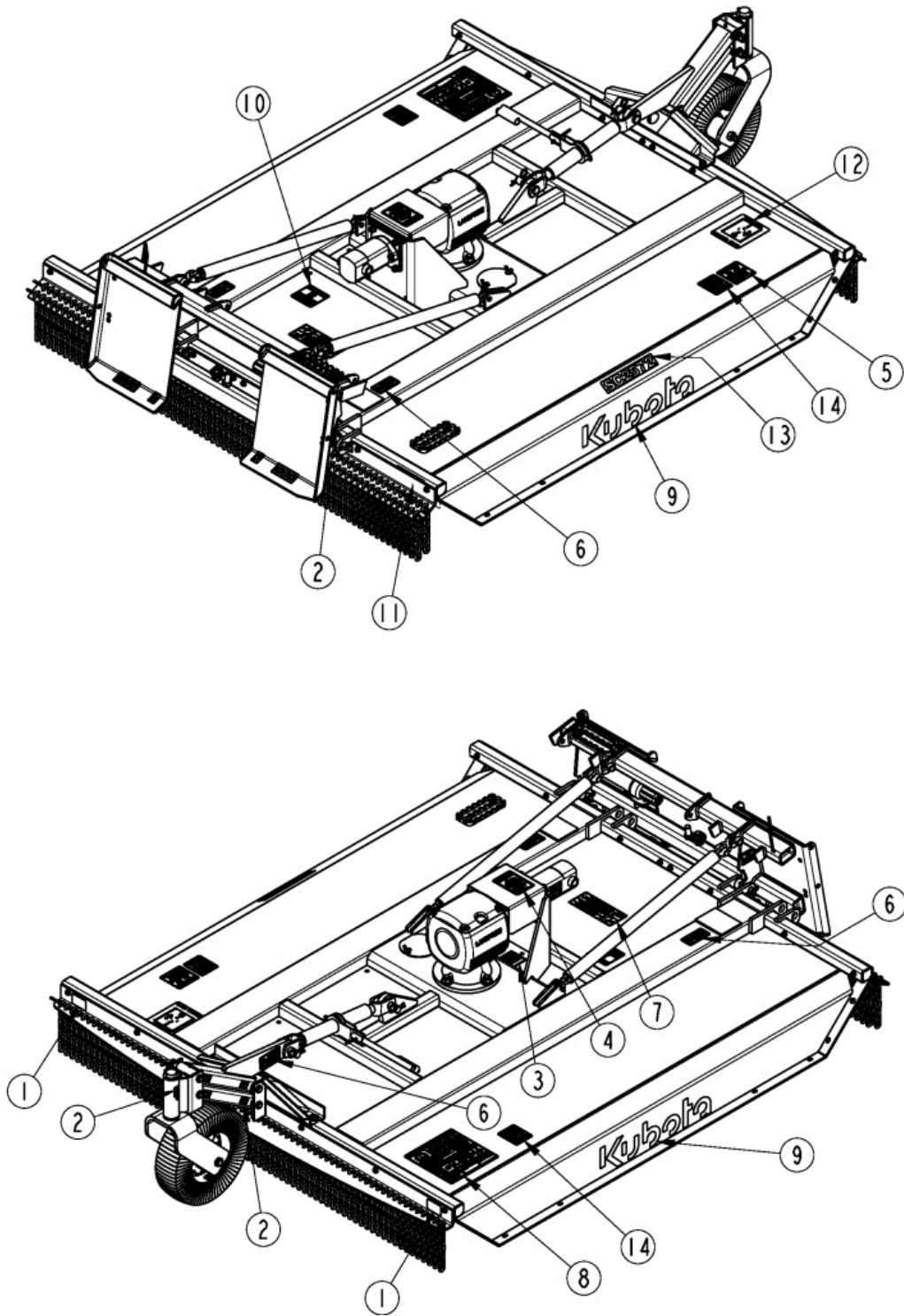


Decals SC2560

Applies to Models: AP-SC2560

Ref.	Part No.	Part Description	Comments
	DWG 39183	Image No.	
1	818-229C	DECAL AMBER REFLECTOR	
2	818-298C	DECAL GREASE 25HRS BLACK/WHITE	
3	818-555C	DECAL DANGER ROTATE BLADE	
4	818-798C	DECAL WARNING PINCH POINT GEN	
5	818-831C	DECAL WARNING HIGH PRESSURE	
6	844-191C	DECAL SKID CUTTER SAFETY COMBO	S/N _____ +
6	818-830C	DECAL SAFETY COMBO SUNWEST	S/N _____ -
7	844-317C	DECAL DANGER ROTATING BLADE	
8	848-088C	DECAL DANGER GUARD MISSING	
9	848-416C	DECAL SC BLADE ROTATION	
10	858-542C	DECAL SC2560 WHITE	
11	844-223C	DECAL, 22" KUBOTA BLOCK	
11	858-400C	DECAL KUBOTA 22"	
12	858-843C	DECAL DO NOT OPERATE-DANGER	S/N _____ +
12	838-948C	DECAL DO NOT OPERATE	S/N _____ -

Applies to Models: AP-SC2572



Decals SC2572

Applies to Models: AP-SC2572

Ref.	Part No.	Part Description	Comments
	DWG 39184	Image No.	
1	818-229C	DECAL AMBER REFLECTOR	
2	818-298C	DECAL GREASE 25HRS BLACK/WHITE	
3	818-543C	DECAL DANGER PD GUARD MISS SML	
4	818-552C	DECAL DANGER PTO DRIVELINE	
5	818-555C	DECAL DANGER ROTATE BLADE	
6	818-798C	DECAL WARNING PINCH POINT GEN	
7	818-831C	DECAL WARNING HIGH PRESSURE	
8	844-191C	DECAL SKID CUTTER SAFETY COMBO	S/N _____ +
8	818-830C	DECAL SAFETY COMBO SUNWEST	S/N _____ -
9	844-223C	DECAL, 22" KUBOTA BLOCK	
9	858-400C	DECAL KUBOTA 22"	
10	844-317C	DECAL DANGER ROTATING BLADE	
11	848-088C	DECAL DANGER GUARD MISSING	
12	848-416C	DECAL SC BLADE ROTATION	
13	858-543C	DECAL SC2572 WHITE	
14	858-843C	DECAL DO NOT OPERATE-DANGER	S/N _____ +
14	838-948C	DECAL DO NOT OPERATE	S/N _____ -

Touch-up Paints - Kubota

Applies to Models: AP-SC2572, AP-SC2560

No diagram associated with this Parts List

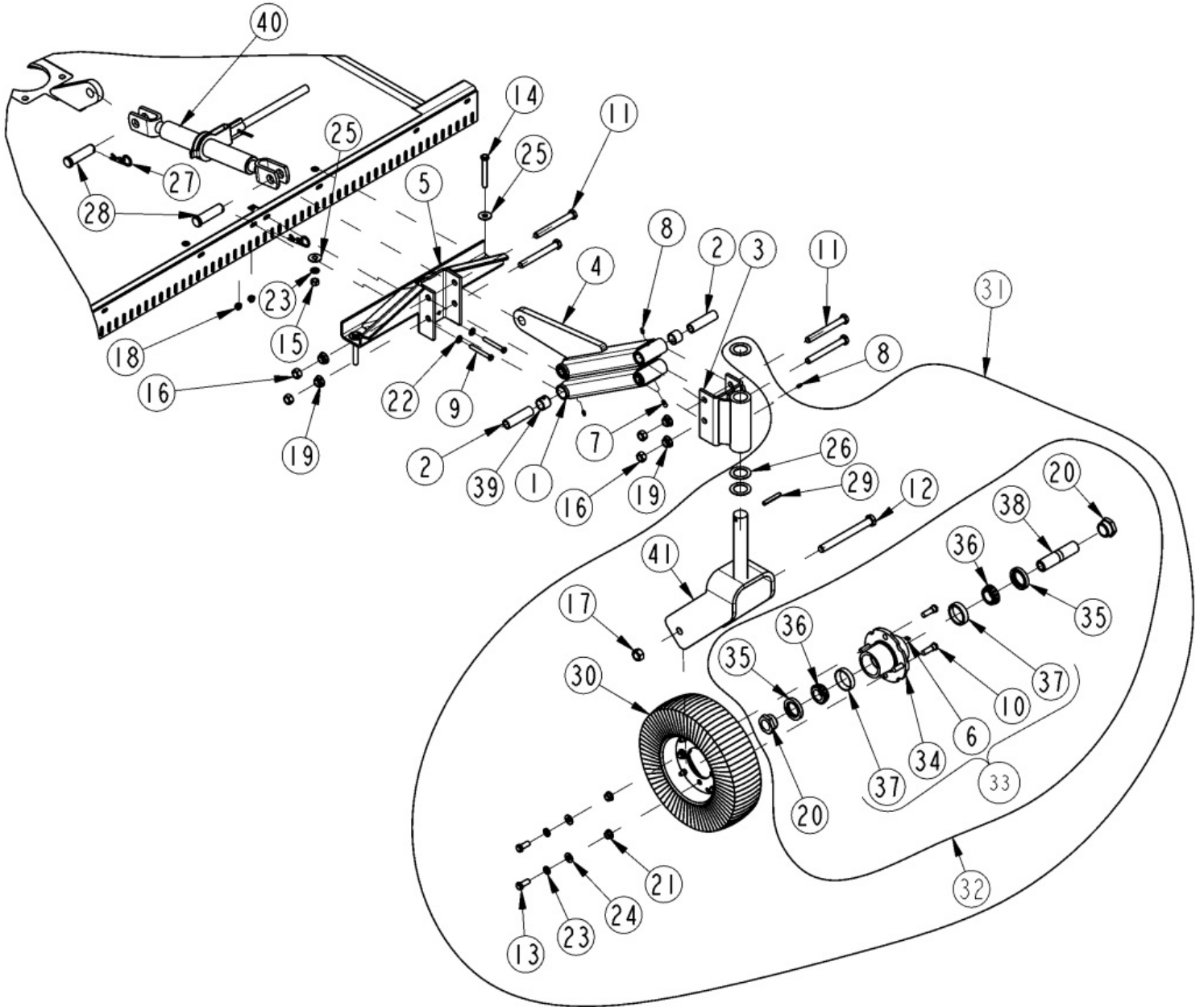
Touch-up Paints - Kubota

Applies to Models: AP-SC2572, AP-SC2560

Ref.	Part No.	Part Description	Comments
1	821-070C	PAINT GP GLOSS BLACK SPRAY CAN	Spray can
2	821-070CTU	PAINT GLOSS BLACK TOUCH-UP 4OZ	Touch-up bottle with brush
3	821-070CQT	PAINT GP GLOSS BLACK QUART	Quart can
4	821-070CGL	PAINT GP GLOSS BLACK GALLON	Gallon Can
5	821-006C	ORANGE SPRAY CAN	Spray can
6	821-066CTU	PAINT ORANGE TOUCH-UP 4OZ	Touch-up bottle with brush
7	821-066CQT	PAINT ORANGE QUART	Quart can
8	821-066CGL	PAINT ORANGE GALLON	Gallon Can
9	821-085C	PAINT KBT DARK GRAY SPRAY CAN	Spray can
10	821-085CTU	PAINT KBT DARK GRAY TCH-UP 4OZ	Touch-up bottle with brush

Gauge Wheel S/N 1002069K-

Applies to Models: AP-SC2572, AP-SC2560



Gauge Wheel S/N 1002069K-

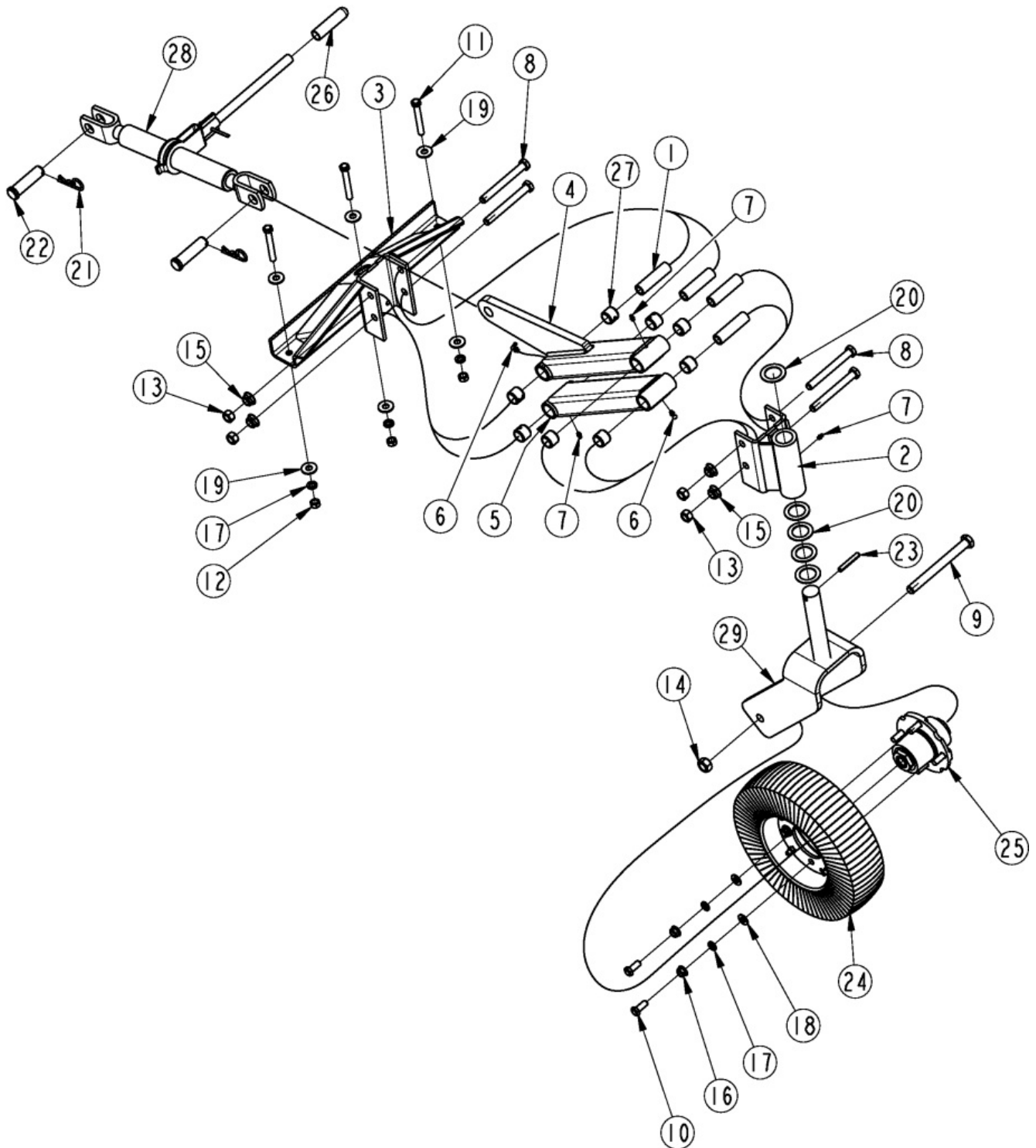
Applies to Models: AP-SC2572, AP-SC2560

Ref.	Part No.	Part Description	Comments
	DWG 35425	Drawing Image Number	
	326-004A	GAUGE WHEEL ASSEMBLY	
		*	
1	321-003H85	LOWER PARALLEL ARM WLDMNT	
2	321-011D	PIVOT BUSHING	
3	326-005H	GAUGE WHEEL YOKE MOUNT	
4	326-006H	UPPER ARM WELDMENT	
5	326-637H	GAUGE WHEEL MOUNT	
6	800-001C	GREASE ZERK STRAIGHT 1/4-28	
7	800-073C	GREASE ZERK 1/4-28 X 90-DEG	
8	800-080C	GREASE ZERK 1/4-28 THD FORMING	
9	802-024C	HHCS 3/8-16X3 GR5	
10	802-135C	HUB STUD 1/2-20X1 5/8 GR5	
11	802-254C	HHCS 5/8-11X5 1/2 GR5	
12	802-280C	HHCS 3/4-10X7 1/2 GR5	
13	802-326C	HHCS 1/2-20X1 1/4 GR5	
14	802-853C	HHCS 1/2-13X3 3/4 GR8	
15	803-020C	NUT HEX 1/2-13 PLT	
16	803-021C	NUT HEX 5/8-11 PLT	
17	803-026C	NUT LOCK 3/4-10 PLT	
18	803-198C	NUT HEX WHIZ 3/8-16 PLT	
19	803-263C	NUT HEX FLANGE LOCK 5/8-11 PLT	
20	803-289C	NUT HEX 1 1/4-7(MACHINED)PLAIN	
21	803-308C	NUT HEX FLG/LK 1/2-20 PLT GR G	
22	804-012C	WASHER FLAT 3/8 SAE PLT	
23	804-015C	WASHER LOCK SPRING 1/2 PLT	
24	804-016C	WASHER FLAT 1/2 SAE PLT	
25	804-017C	WASHER FLAT 1/2 USS PLT	
26	804-066C	WASHER MACH 2.25 X 1.50 X 14GA	
27	805-088C	PIN, HAIR COTTER 3/16 WIRE DIA	
28	805-090C	PIN CLVS 1.0X3.20 USBL	
29	805-255C	PIN ROLL 3/8 X 2 1/2 PLT	
30	814-058C	TIRE & WHEEL LAMINATED 4.0 X 8	
31	814-161C	LAM 4X8 TR-WL-HUB-YOKE 25 SER.	
32	815-092C	HUB & SPINDLE ASSY 4 BOLT	
33	815-230C	HUB 4 BLT W/CUPS, ZERK & STUDS	
34		HUB 4BLT DUCTILE(USE 815-230C)	
35	816-286C	OIL SEAL DBL LIP 2.441 BORE	
36	822-091C	BRG 1.25ID CONE 15123	
37	822-092C	BRG CUP 2.44OD 15245	
38	827-036C	BUSHING TW 1.25ODX.78IDX5 1/4	
39	890-005C	BUSHING CYL 1 1/4 X 1 X 1	
40	890-177C	RATCHET JACK - HEAVY DUT	
41	890-961C	RC25 TAILWHEEL YOKE, 1.5 SHAFT	
41	890-961C	RC25 TAILWHEEL YOKE, 1.5 SHAFT	

Kubota
Gauge Wheel S/N 1002070K+

Section 6: Options & Accessories

Applies to Models: AP-SC2572, AP-SC2560



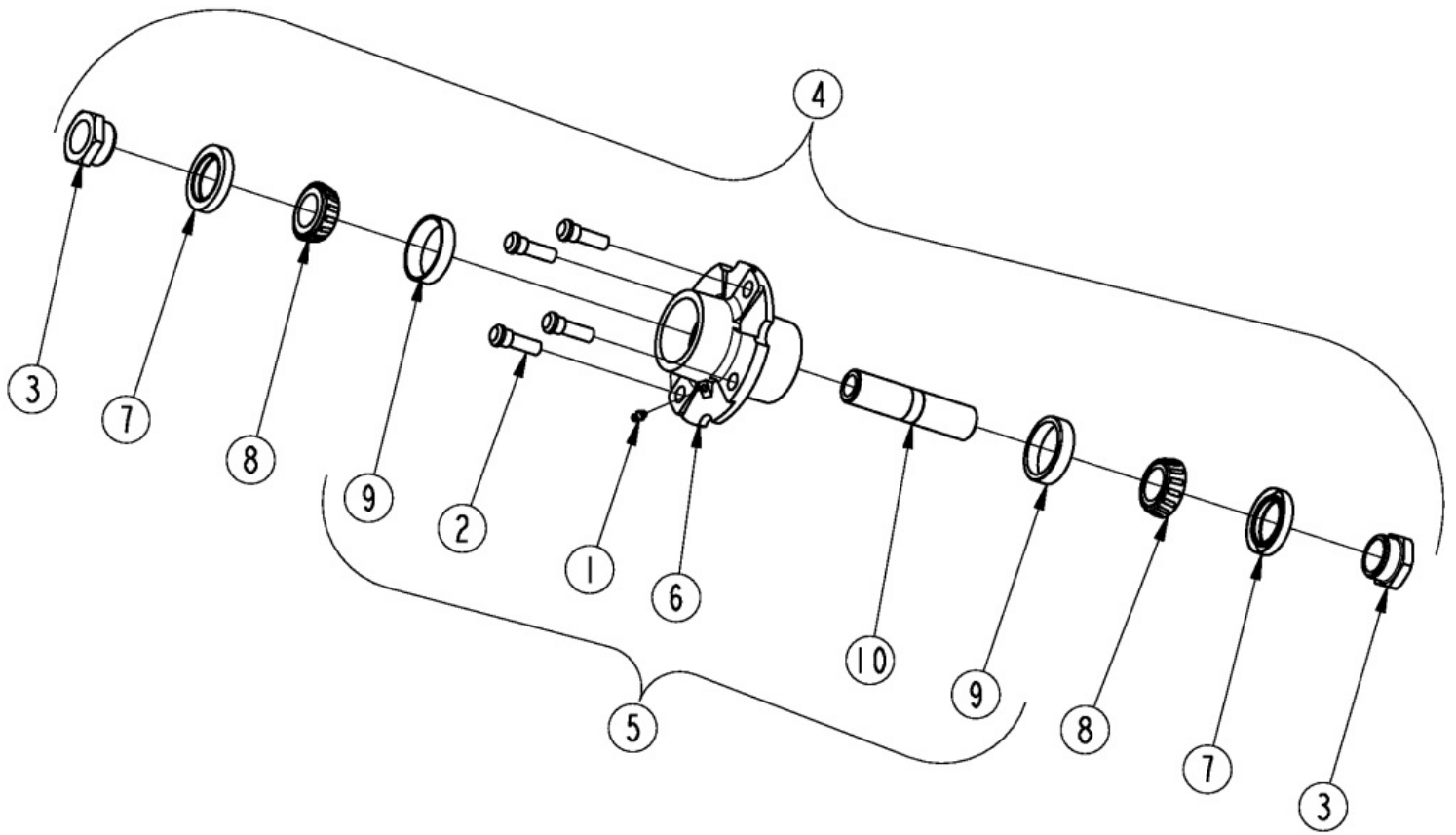
Gauge Wheel S/N 1002070K+

Applies to Models: AP-SC2572, AP-SC2560

Ref.	Part No.	Part Description	Comments
	DWG 39951 326-858A	Image No. GAUGE WHEEL FRONT *	
1	321-011D	PIVOT BUSHING	
2	326-005H	GAUGE WHEEL YOKE MOUNT	
3	326-637H	GAUGE WHEEL MOUNT	
4	326-856H	UPPER ARM	
5	326-857H	LOWER ARM	
6	800-073C	GREASE ZERK 1/4-28 X 90-DEG	
7	800-080C	GREASE ZERK 1/4-28 THD FORMING	
8	802-254C	HHCS 5/8-11X5 1/2 GR5	
9	802-280C	HHCS 3/4-10X7 1/2 GR5	
10	802-326C	HHCS 1/2-20X1 1/4 GR5	
11	802-853C	HHCS 1/2-13X3 3/4 GR8	
12	803-020C	NUT HEX 1/2-13 PLT	
13	803-021C	NUT HEX 5/8-11 PLT	
14	803-026C	NUT LOCK 3/4-10 PLT	
15	803-263C	NUT HEX FLANGE LOCK 5/8-11 PLT	
16	803-308C	NUT HEX FLG/LK 1/2-20 PLT GR G	
17	804-015C	WASHER LOCK SPRING 1/2 PLT	
18	804-016C	WASHER FLAT 1/2 SAE PLT	
19	804-017C	WASHER FLAT 1/2 USS PLT	
20	804-066C	WASHER MACH 2.25 X 1.50 X 14GA	
21	805-088C	PIN, HAIR COTTER 3/16 WIRE DIA	
22	805-090C	PIN CLVS 1.0X3.20 USBL	
23	805-255C	PIN ROLL 3/8 X 2 1/2 PLT	
24	814-058C	TIRE & WHEEL LAMINATED 4.0 X 8	
25	815-092C	HUB & SPINDLE ASSY 4 BOLT	
26	817-246C	GRIP HANDLE .84 ID X 4 LG	
27	890-005C	BUSHING CYL 1 1/4 X 1 X 1	
28	890-177C	RATCHET JACK - HEAVY DUT	Includes items 21 & 22
29	890-961C	RC25 TAILWHEEL YOKE, 1.5 SHAFT	

Hub Assembly 4-Bolt W/ Zerk & Studs (815-092C)

Applies to Models: AP-SC2572, AP-SC2560



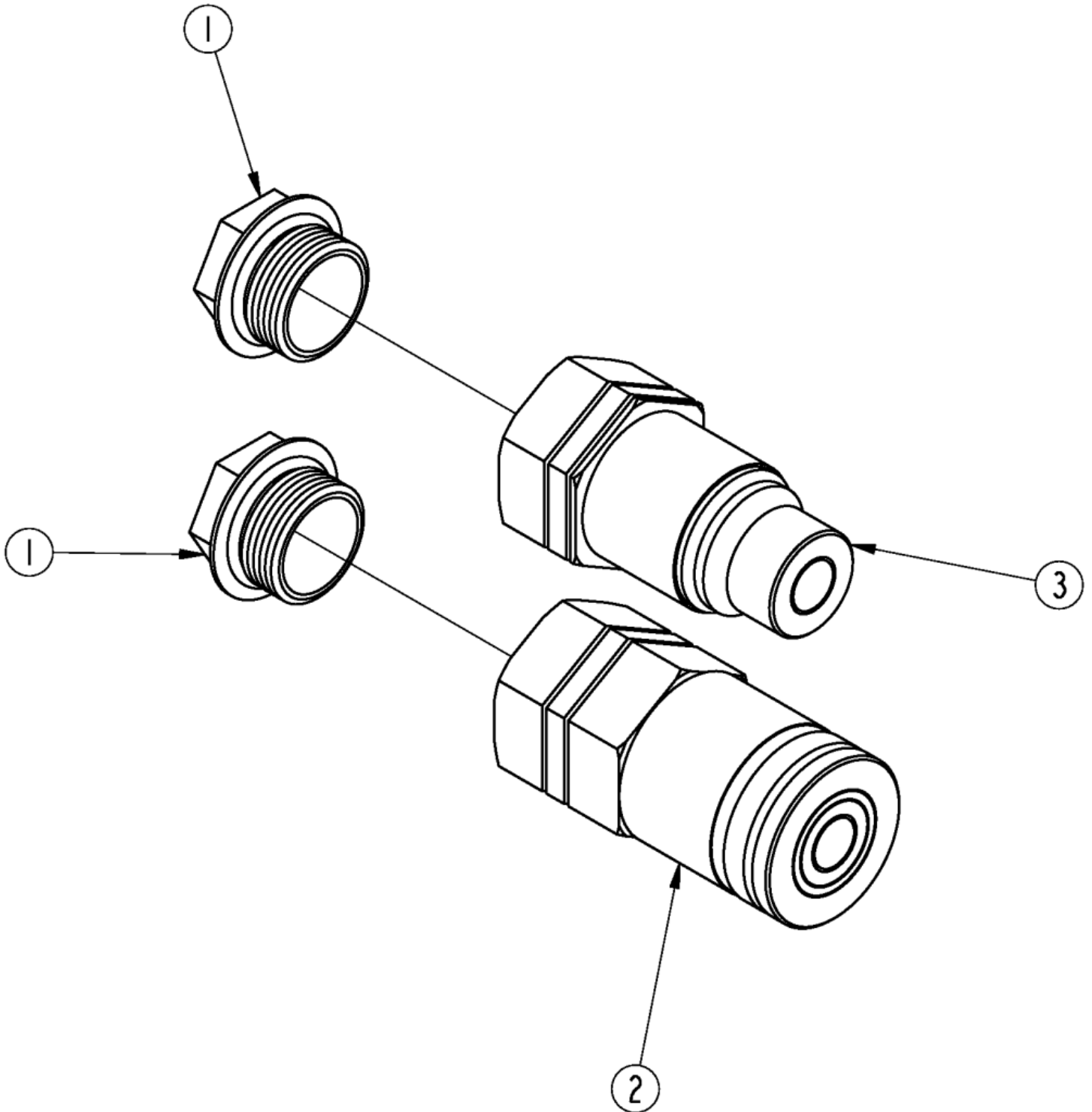
Hub Assembly 4-Bolt W/ Zerk & Studs (815-092C)

 Applies to Models: AP-SC2572, AP-SC2560

Ref.	Part No.	Part Description	Comments
	DWG 37435	Image No.	
1	800-001C	GREASE ZERK STRAIGHT 1/4-28	
2	802-135C	HUB STUD 1/2-20X1 5/8 GR5	
3	803-289C	NUT HEX 1 1/4-7(MACHINED)PLAIN	
4	815-092C	HUB & SPINDLE ASSY 4 BOLT	
5	815-230C	HUB 4 BLT W/CUPS, ZERK & STUDS	
6	815-231C	HUB 4BLT DUCTILE(USE 815-230C)	
7	816-286C	OIL SEAL DBL LIP 2.441 BORE	
8	822-091C	BRG 1.25ID CONE 15123	
9	822-092C	BRG CUP 2.44OD 15245	
10	827-036C	BUSHING TW 1.25ODX.78IDX5 1/4	

Large Flat Faced Couplers With Adapters Bundle

Applies to Models: AP-SC2572, AP-SC2560



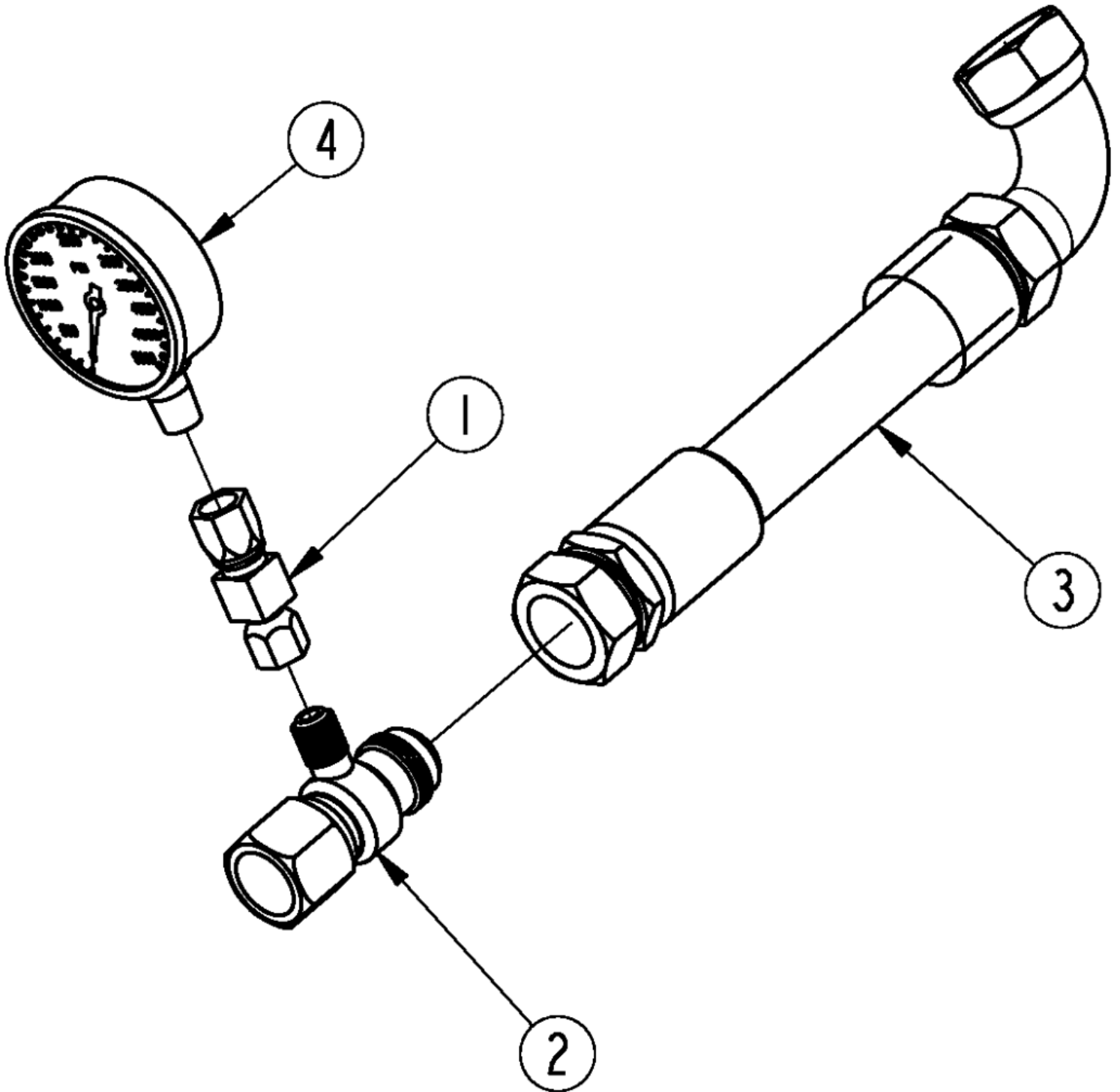
Large Flat Faced Couplers With Adapters Bundle

Applies to Models: AP-SC2572, AP-SC2560

Ref.	Part No.	Part Description	Comments
	DWG 70167 326-960A	Image No. LG FLAT FACED CPLRS W/ADAPTERS *	
1	811-570C	AD 1 5/16MORB 1 1/16FORB	
2	841-957C	CP 1 5/16FORB FEMALE QD	
3	841-958C	CP 1 5/16FORB MALE QD	

Motor Pressure Gauge (326-832K)

Applies to Models: AP-SC2572, AP-SC2560



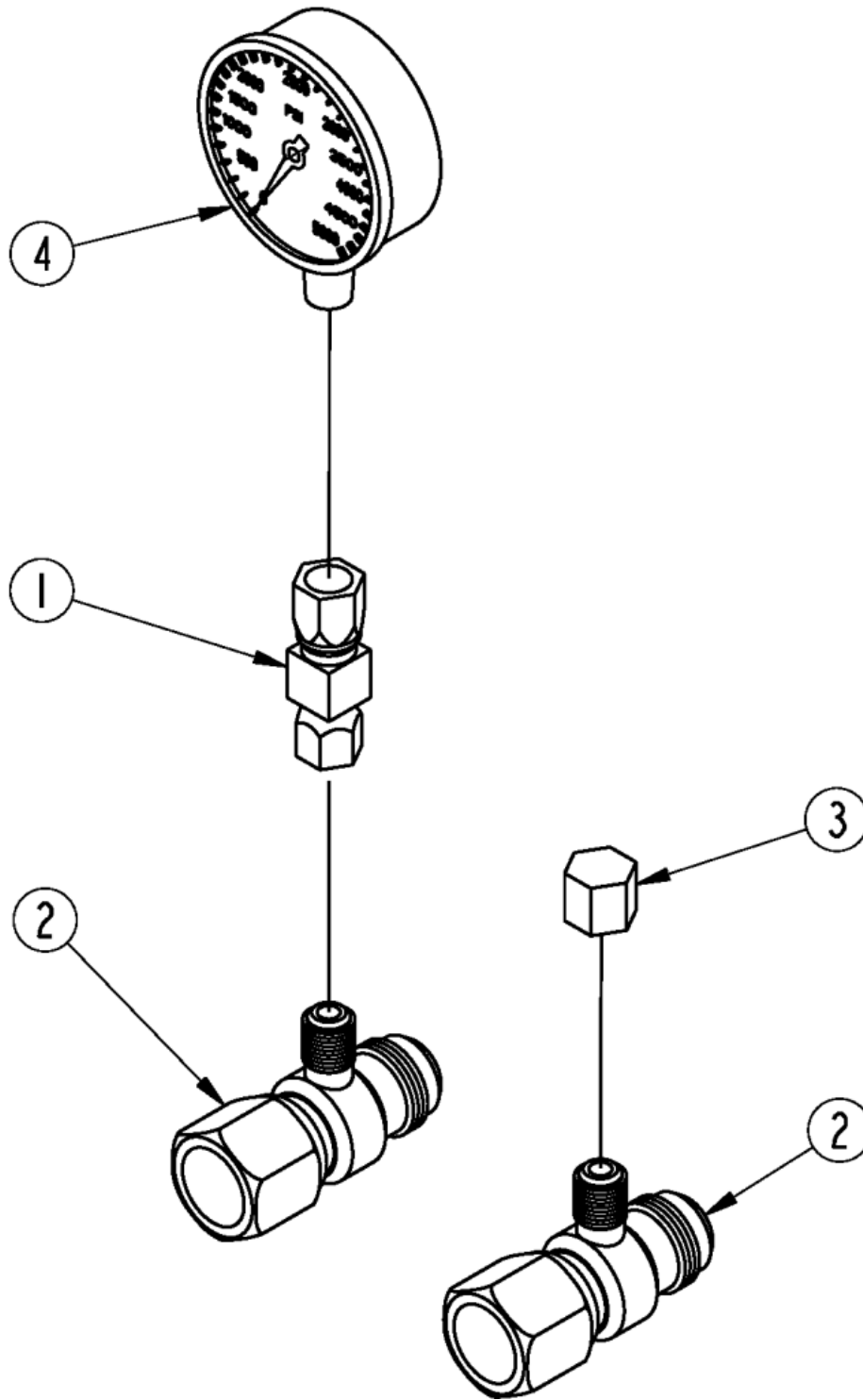
Motor Pressure Gauge (326-832K)

Applies to Models: AP-SC2572, AP-SC2560

Ref.	Part No.	Part Description	Comments
	DWG 39185 326-832K	Image No. MOTOR PRESSURE KIT *	For AP-SC2560 and AP-SC2572 S/N _____ -
1	811-582C	AD 9/16FJIC 1/4FNPT	
2	811-624C	TE1 1/16MJIC 1 1/16FJIC 9/16MJ	
3	841-648C	HH3/4R2 10.93 1.06FJIC1SWPT90	
4	851-685C	PRESSURE GUAGE 0-5000 PSI	

Motor Pressure Gauge (327-376A)

Applies to Models: AP-SC2572, AP-SC2560



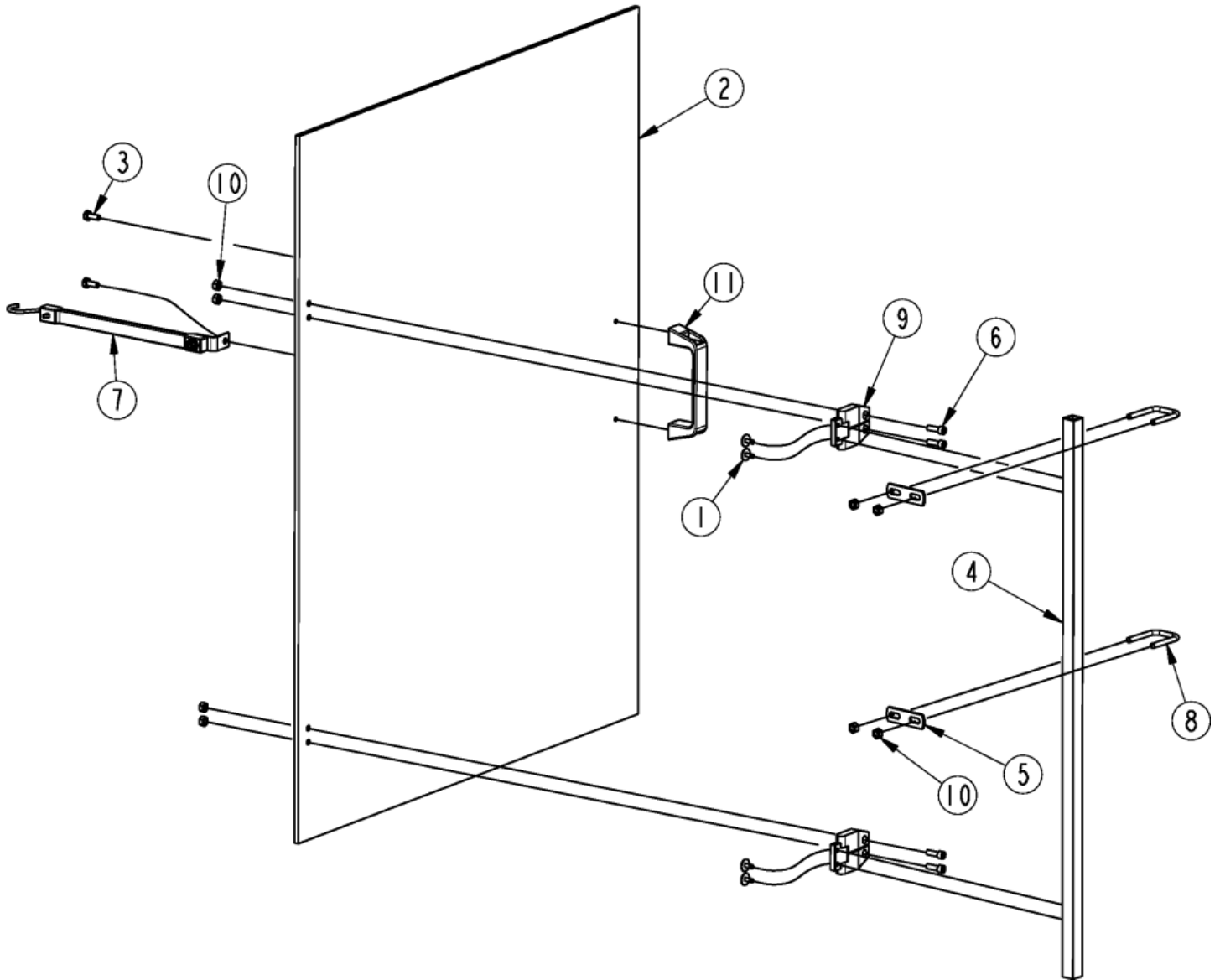
Motor Pressure Gauge (327-376A)

 Applies to Models: AP-SC2572, AP-SC2560

Ref.	Part No.	Part Description	Comments
	DWG 76407 327-376A	Image No. PRESSURE GAUGE BUNDLE 2572 *	For AP-SC2572
1	811-582C	AD 9/16FJIC 1/4FNPT	
2	811-624C	TE1 1/16MJIC 1 1/16FJIC 9/16MJ	
3	811-862C	CP 9/16FJIC	
4	851-685C	PRESSURE GUAGE 0-5000 PSI	

Kubota
Protective Door

Applies to Models: AP-SC2572, AP-SC2560

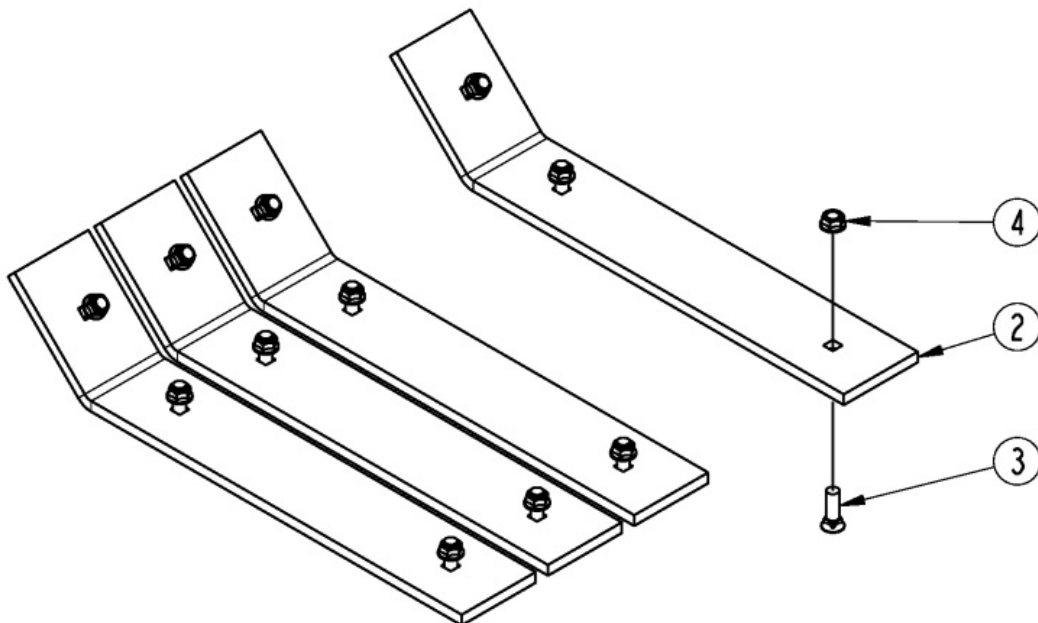
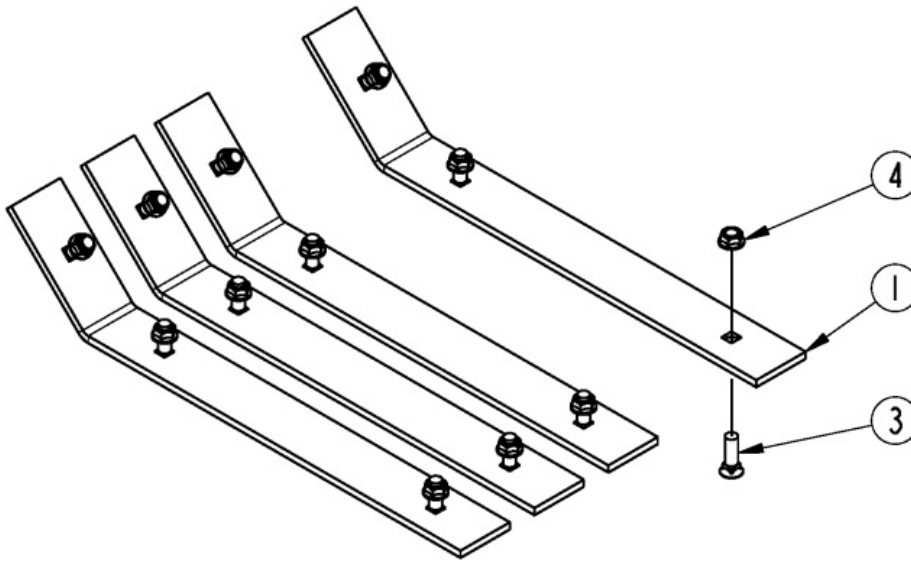


Protective Door

Applies to Models: AP-SC2572, AP-SC2560

Ref.	Part No.	Part Description	Comments
	DWG 24640 326-024A	Image No. PROTECTIVE DOOR POLYCARBONATE *	
1	800-230C	RIVET POP 3/16 .251-.375 LF	Not Included in 326-024A
2	PSM12RSA	SKID PROTECTIVE DOOR 1/4"LEXAN	
3	PSM2520137UB	HHCS 1/4-20X5/8 GR5	
4	PSM252058SC	HINGE TUBE	
5	PSM252075SC	PLATE, U-BOLT	
6	PSM2520NT	HSHCS 1/4-20X3/4	
7	PSM321650HA	DOOR STRAP	
8	PSM8300879DH	U-BOLT 1/4-20X1 3/8X2	
9	PSMAL75SQ	DOOR HINGE	
10	PSMGSPD	NUT LOCK 1/4-20 PLT	
11	PSMST11AG	DOOR HANDLE	

Applies to Models: AP-SC2572, AP-SC2560



Skid Shoe Options

 Applies to Models: AP-SC2572, AP-SC2560

Ref.	Part No.	Part Description	Comments
	DWG 39273	Image No.	
	326-827A	SKID SHOE BUNDLE	Complete set of 4 skid shoes and hardware
	326-828A	SKID SHOE HEAVY BUNDLE	Complete set of 4 skid shoes and hardware
		*	
1	312-602D	SKID SHOE	
2	326-343D	SKID SHOE HEAVY	
3	802-466C	PLOW 3/8-16X1 1/4 GR5	
4	803-198C	NUT HEX WHIZ 3/8-16 PLT	

Part Number Index

Part Number	Page	Part Number	Page	Part Number	Page
0.121.7101.00	47	326-255D	21	8.4.7.00146	5, 7, 9, 41, 47
0.132.7107.00	47	326-256D	17	8.4.7.02265	47
0.139.7100.00	41, 47	326-283D	17, 19, 21	8.5.1.00533	47
0.139.7101.00	5, 7, 9, 41, 47	326-341D	23	8.5.2.00332	47
0.210.0300.00	47	326-342D	23	8.6.5.00006	41, 47
0.210.1300.00	47	326-343D	69	8.6.6.00201	47
0.210.2001.00	47	326-370D	23	8.7.1.01107	41, 47
0.210.3000.00	47	326-391D	17	8.7.1.02348	47
0.210.5000.00	47	326-392D	17, 19, 21	8.7.3.00331	47
0.210.6000.00	47	326-393D	21	800-001C	55, 59
0.210.7100.00	47	326-394D	23	800-073C	55, 57
0.252.7525.00	47	326-395D	23	800-080C	55, 57
0.278.7104.00	41	326-538D	17, 19, 21	800-230C	67
0.285.7510.00	47	326-637H	55, 57	802-005C	39
0.709.7500.00	47	326-820A	35, 37	802-007C	7
0.712.7500.00	47	326-821A	35, 37	802-024C	17, 19, 21, 55
0.772.1303.00	41	326-822A	35, 37	802-064C	7
0.772.3000.00	41	326-823H	11	802-082C	37
04-011	41, 47	326-827A	69	802-128C	35, 37
11-10400	45	326-828A	69	802-135C	55, 59
11-10401	45	326-831H	13	802-224C	23
11-10635	45	326-832K	63	802-226C	39
11-20414	45	326-842H	23	802-254C	55, 57
11-30017	45	326-855K	19	802-277C	5, 7, 9
1235287	43	326-856H	57	802-280C	55, 57
1535275	43	326-857H	57	802-326C	55, 57
1705267	43	326-858A	57	802-466C	69
1785273	43	326-859K	19	802-657C	5, 9
19-075	43	326-960A	61	802-853C	55, 57
19-33302	45	327-144H	7, 9	803-006C	39
2.210.5001.00	47	327-206D	23	803-008C	39
312-602D	69	327-359D	35, 37	803-020C	35, 37, 55, 57
312-647D	11, 13	327-372H	15	803-021C	55, 57
316-124H	5	327-374A	39	803-026C	55, 57
318-586A	5, 7	327-375A	39	803-169C	39
318-617D	17, 19, 21	327-376A	65	803-170C	5, 7, 9
321-003H85	55	327-525D	19	803-181C	23
321-011D	55, 57	327-527D	19	803-198C	17, 19, 21, 55, 69
326-004A	55	331-451D	35, 39	803-231C	11, 13, 15
326-005H	55, 57	338-014D	39	803-255C	23
326-006H	55	338-015D	15	803-263C	5, 9, 55, 57
326-007K	21	6141660	43	803-289C	55, 59
326-008K	17	6410716	43	803-299C	7
326-024A	67	6412016	43	803-308C	55, 57
326-026K	23	6821484	43	804-006C	39
326-077K	17	8.0.9.00143	41, 47	804-007C	23, 39
326-078K	21	8.0.9.00469	41, 47	804-009C	7, 39
326-079K	23	8.1.1.00501	47		
326-095S	23	8.2.2.00555	5, 7, 9, 41, 47		
326-096H	7				

Part Number	Page	Part Number	Page	Part Number	Page
804-012C	11, 13, 15, 17, 19, 21, 55	818-555C	49, 51	858-400C	49, 51
804-013C	11, 13, 15	818-798C	49, 51	858-542C	49
804-015C	35, 37, 55, 57	818-830C	49, 51	858-543C	51
804-016C	55, 57	818-831C	49, 51	858-843C	49, 51
804-017C	55, 57	820-112C	5	861-264C	39
804-024C	23	820-249C	7, 9	861-266C	39
804-036C	39	821-006C	53	871-352C	39
804-066C	55, 57	821-066CGL	53	871-353C	39
804-147C	5, 7, 9	821-066CQT	53	890-005C	55, 57
804-247C	43	821-066CTU	53	890-177C	55, 57
805-085C	23	821-070C	53	890-393C	17, 19, 21
805-088C	55, 57	821-070CGL	53	890-931C	23
805-090C	55, 57	821-070CQT	53	890-961C	55, 57
805-127C	23	821-070CTU	53	A.709.500	47
805-249C	23	821-085C	53	A.712.500	47
805-255C	55, 57	821-085CTU	53	DWG 12276	41
805-363C	23	822-091C	55, 59	DWG 22264	47
805-384C	23	822-092C	55, 59	DWG 24640	67
806-094C	39	822-214C	41, 47	DWG 25691	43
81010-1019	45	826-110C	5, 9, 41	DWG 35425	55
810-715C	35, 37, 39	826-380C	7, 47	DWG 37435	59
81123-1270	45	826-548C	7, 43	DWG 37886	11
811-408C	35, 37, 39	826-962C	7, 45	DWG 37887	17
811-570C	61	827-036C	55, 59	DWG 37888	21
811-582C	63, 65	838-948C	49, 51	DWG 37913	5
811-624C	63, 65	841-539C	35, 37, 39	DWG 37914	7
811-719C	35, 37	841-545C	35, 37	DWG 39103	23
811-744C	35, 37	841-566C	35, 37	DWG 39181	35
811-745C	35, 37	841-648C	63	DWG 39183	49
811-862C	65	841-656C	35, 37	DWG 39184	51
814-058C	55, 57	841-676C	35, 37, 39	DWG 39185	63
814-161C	55	841-957C	61	DWG 39273	69
815-092C	55, 57, 59	841-958C	61	DWG 39625	13
815-230C	55, 59	842-419C	35	DWG 39951	57
815-231C	59	844-191C	49, 51	DWG 39954	19
816-182C	35, 37, 39	844-223C	49, 51	DWG 70167	61
816-286C	55, 59	844-317C	49, 51	DWG 74531	45
816-504C	23	848-088C	49, 51	DWG 76264	37
816-887C	35, 37	848-416C	49, 51	DWG 76397	15
817-246C	57	850-029C	35, 37	DWG 76399	9
817-387C	23	850-090C	35, 37	DWG 76403	39
818-229C	49, 51	850-091C	35, 37	DWG 76407	65
818-298C	49, 51	850-521C	39	PE-0611131	43
818-543C	51	850-522C	39	PSM12RSA	67
818-552C	51	851-683C	35, 37	PSM2520137UB	67
		851-685C	63, 65	PSM252058SC	67
		851-755C	39	PSM252075SC	67
		851-947C	35, 37, 39	PSM2520NT	67
		851-948C	35, 37, 39	PSM321650HA	67
				PSM8300879DH	67

Part Number	Page
PSMAL75SQ	67
PSMGSPD	67
PSMST11AG	67

This Page Intentionally Left Blank



KUBOTA TRACTOR CORPORATION

1000 Kubota Drive, Grapevine, TX 76051

Telephone: (817) 756-1171

Western Division: 1175 S. Guild Ave., Lodi, CA 95240

Telephone: (209) 334-9910

Midwest Division: 31700 W. 207th ST., Edgerton, KS 66021

Telephone: (913) 215-5915

Central Division: 14855 FAA Blvd., Fort Worth, TX 76155

Telephone: (817) 571-0900

Northern Division: 6300 at One Kubota Way, Groveport, OH 43125

Telephone: (614) 835-1100

Southeast Division: 1025 Northbrook Parkway, Suwanee, GA 30024

Telephone: (770) 995-8855

www.kubota.com