

SkillsUSA Electrical Construction Wiring Virtual Project

Scope of the Contest

The Electrical Construction Wiring event will allow each contestant the opportunity to perform in a practical work environment. Each contestant will have the opportunity to use his or her acquired electrical wiring skills to construct an electrical wiring installation, using electrical blueprints, written specifications and verbal instructions based on the National Electrical Construction Wiring standards in accordance with the National Electrical Code.

Knowledge Performance

The contest will include a **Resume, Written Submission, and Video.**

See SkillsUSA Virtual Technical Standards for competencies measured.

Contest Information (All items must be received by due date)

- **PDF Resume**
 - Upload one file with all contestant's one-page resume's and include the digital link(s) to Written Submission and Zoom Recording
 - Click link below for Resume Rubric and scoring details
<https://drive.google.com/file/d/1-9YpfjyXVDSCVtVEJFMHeVnrQHxYd-O/view?usp=sharing>

Portfolio/Written Submission

- Contestants are to submit a written summary of the steps they took to complete the project including planning, material management, and project evaluation.
- Upload written submission in a cloud-based storage platform and embed the link to written document into all contestant's resumes.

Video of Demonstrated Procedures

- Utilizing Zoom or Teams, record the contestant completing the designated project.
- Ensure lighting, audio and video are high quality, and focus one camera at a distance to show the workspace the contestant is in to ensure they are not receiving any additional support. Position 1-2 additional cameras directly on the student to show their work. As tasks are completed, zoom in on key components for judging.

Scoring Information

The following pre-submission items will be judged by industry professionals prior to virtual in-person Zoom session.

1. Resume with embedded links to written submission and video of student completing the project
2. Written submission
3. Video presentation of contestant completing assigned project. Contestant should narrate what they are doing while doing it to ensure the judges can accurately score.

Zoom Interview/Role Play

	Contestant Materials List	
1	Ensure all necessary materials and equipment are readily available prior to recording.	y
2		s

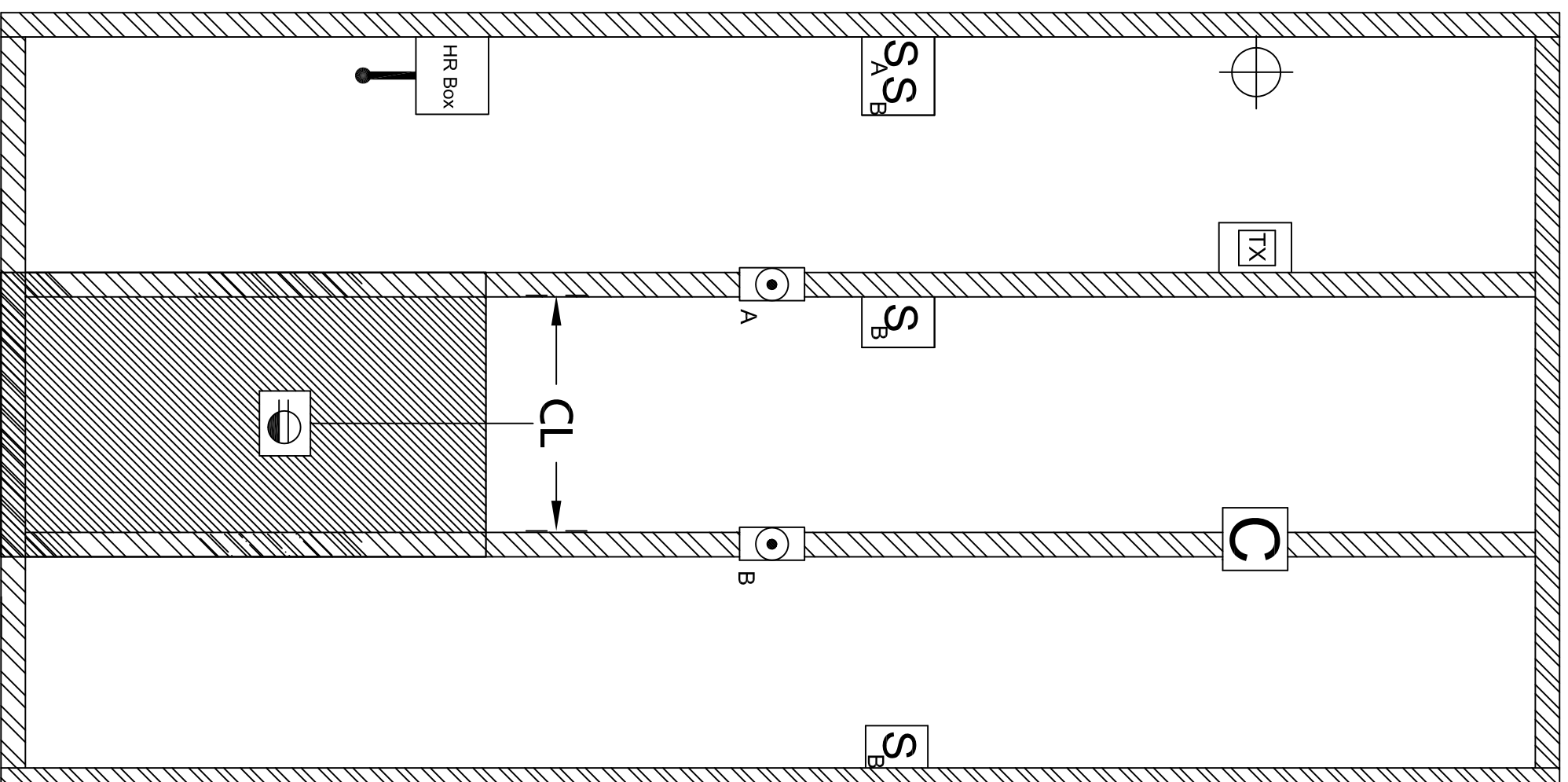
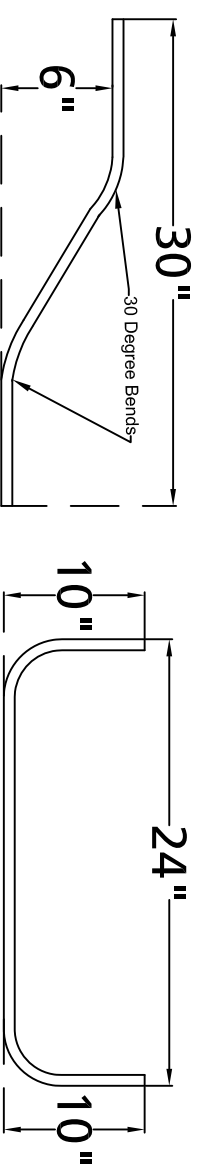
<u>Qty.</u>	<u>Description</u>
1	4 11/16 Steel Box 2 1/8"D w/ 1/2" Kos
2	2-gang 2 13/16 plastic nail-on box W/ Blank Plate
2	1-gang 2 13/16 plastic nail-on box
1	Round 4 1/16 plastic nail-on box
1	Handy box w/ bracket
1	Handy box cover W/1/2" KO
1	4 11/16" Sq 2G PR 1/2"R
1	1-Gang metal 2 1/2"D Cut-in Box w/ wings
1	SP 15-amp 120V switch ivory
1	4-way 15-amp 120V switch ivory
2	3-way 15-amp 120V switch ivory
1	15A Duplex receptacle ivory
1	2-gang ivory switch plate
2	1-gang ivory duplex receptacle plate
1	1-gang ivory switch plate
1	2-gang blank for plastic 2-gang box
1	1-gang ivory duplex plate
1	Porc keyless lamp holder
1	60 watt A19 120 volt lamp
7'	No. 12-3 w/grd MC Cable
5'	No. 12-2 w/grd Romex
10'	No. 14-3 w/grd Romex
8'	No. 14-2 w/grd Romex
5'	No. 18-3 Plastic jacket bell wire
10'	No. 18-2 Plastic jacket bell wire
3	Green grounding pigtail w/screw
8	Size 451 yellow wire conn
8	Size 452 red wire conn
3	Size 73B orange wire conn
5	Size 92 green wire conn
8	1/2 Romex connector
15	Romex Staples
2	1/2" MC Connectors w/ anit-short bushings
10'	1/2" EMT
12	#8 x 3/4" Pan Head S.M. screws
1	Front/Back Door Nutone chime kit w/ <u>dual tone doorbell and dual buttons.</u>
3	Tie wraps
1	6' 120v Cord w/ male plug

WIRING INSTRUCTIONS

1. INSTALL THE "HR BOX" & CONNECT 3-WIRE CORD SET TO THE BOX. CONNECT BOTH THE 12/2 AND 14/2 NM CABLE TO THE CORD SET INSIDE THE BOX.
2. INSTALL WIRING AS SHOWN ON THE DRAWING USING THE 14 GAUGE WIRE FOR THE TRANSFORMER AND THE LIGHT FIXTURE (SIMULATING A 15 AMP CIRCUIT) AND 12 GAUGE WIRE FOR THE RECEPTACLE (SIMULATING A 20 AMP CIRCUIT)
3. UTILIZE 12/3 MC FOR THE WIRING FROM S_A TO THE SWITCHED RECEPTACLE. MC DOES NOT REQUIRE STRAPPING.
4. WIRE ALL LIGHT SWITCHES AS CALLED FOR ON THE DRAWING UNDER "FUNCTION OF SWITCHES" .
5. INSTALL DOOR BELL SYSTEM AS SHOW SYSTEM WILL HAVE A FRONT AND BACK DOOR. THE BUTTON. THE CHIME IS TO BE WIRED SO THERE IS DIFFERENT TONES FOR EACH.
6. MOUNT ALL BOXES TO ACCEPT 1/2" DRYWALL EXCEPT THE CUT-IN BOX.
7. WIRE DUPLEX RECEPTACLE SO THAT THE RIGHT RECEPTACLE IS CONTROLLED BY THE SINGLE POLE SWITCH AND LEFT RECEPTACLE IS HOT ALL THE TIME.

EMT CONDUIT BENDS

1. BEND A 6" OFFSET IN THE CENTER OF A 30" RUN OF EMT AS SHOWN.
2. BEND A 24" BACK-TO-BACK BEND AS SHOWN WITH 4" SQ. BOX OFFSETS ON EACH END IN THE SAME DIRECTION



LEGEND

- SS_AB** 2 GANG 4" X 2-1/8" METALLIC SWITCH BOX WITH 2 GANG 1/2" RAISED MUD RING AND 1 SINGLE POLE SW & 1 3-WAY SW
- C** 12 V CHIME SURFACE MOUNTED WITH FRONT AND BACK DOOR WIRING
- KEYLESS LAMP HOLDER WITH 60A LAMP MOUNTED ON ROUND PLASTIC BOX
- TX** HANDY BOX W/ 120V TO 12V TRANSFORMER MOUNTED ON HANDY BOX COVER
- 12 V PUSH BUTTON SURFACE MOUNTED PB "A" IS @ FRONT DOOR PB "B" IS @ BACK DOOR
- S_B** 1 GANG PLASTIC SWITCH BOX WITH 3-WAY OR 4-WAY SWITCH
- 1 GANG METALLIC CUT-IN BOX W/ DUPLEX RECEPTACLE 1/2 SWITCHED MOUNTED HORIZONTAL WITH THE RIGHT SIDE SWITCHED
- HR Box** 2 GANG PLASTIC NAIL ON BOX WITH BLANK IVORY COVER

MOUNTING HEIGHTS AFF

- @ 18" TO CENTER
- SS_AB** @ 48" TO CENTER
- @ 60" TO CENTER
- TX** @ 60" TO CENTER
- S_B** @ 48" TO CENTER
- C** @ 60" TO CENTER
- @ 36" TO CENTER
- HR Box** @ 30" TO CENTER

FUNCTION OF SWITCHES

- S_A CONTROLS RIGHT HALF OF DUPLEX RECEPT.
- S_B CONTROLS LIGHT FIXTURE FROM 3 LOCATIONS

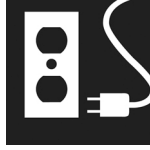
General Notes

Blank space for general notes.

REVISIONS

#	Date

ELECTRICAL CONSTRUCTION WIRING (VIRTUAL)



PURPOSE

The Electrical Construction Wiring event will allow each contestant the opportunity to perform in a practical work environment. Each contestant will have the opportunity to use his or her acquired electrical wiring skills to construct an electrical wiring installation, using electrical blueprints, written specifications and verbal instructions based on the National Electrical Construction Wiring standards in accordance with the National Electrical Code.

First, download and review the General Regulations at: <http://updates.skillsusa.org>.

CLOTHING REQUIREMENTS

Class C: Contest Specific — Manufacturing/Construction Khaki Attire

- Official SkillsUSA khaki short-sleeve work shirt and pants.
- Black, brown or tan leather work shoes.

Contest Clothing Notes (Apply ONLY to Virtual Competitions):

- Official SkillsUSA Competition Clothing recommended but NOT required.
- Contestant clothing options include the following:
 - Official Competition Clothing.
 - Trade Appropriate Clothing.
 - Professional Dress.
 - Business Casual.
- Clothing must meet industry safety standards.
- No identification of the contestant, school or state is allowed on clothing.
- No offensive, vulgar or inappropriate images or text are allowed on contestants clothing.
- No shorts or sleeveless shirts are allowed.
- Skirts must be at least knee-length.
- Proper Personal Protective Equipment (PPE) must be worn by contestant to meet

all state, local and school requirements due to COVID-19.

- Scoring deductions may only be given and/or disqualification of contestant if clothing safety standards are not met.

Note: Safety glasses must have side shields or goggles (prescription glasses may be used only if they are equipped with side shields. If not, they must be covered with goggles).

These regulations refer to clothing items that are pictured and described at: www.skillsusastore.org. If you have questions about clothing or other logo items, call 1-888-501-2183.

RESTRICTIONS

Contestant electronic devices are not allowed in the testing area or the contest area anytime during the competition.

ELIGIBILITY

Open to active SkillsUSA members enrolled in career and technical education programs with electrical wiring or electrical trades as the occupational objective.

EQUIPMENT AND MATERIALS

Supplied by the contestant:

1. Computer with high-speed internet capability and camera to use applications such as Zoom, Teams, etc. The minimum recommended internet bandwidth speeds for joining Zoom meetings, accessing on-demand curriculum and other online operations is 2.0 Mbps up and down. You can test your current internet speeds by following this link: www.speedtest.net. Allow the page to load and click on GO.
2. A secondary camera(s) may be required to provide judges with the ability to view contestants from different angles. Additional camera requirements will be located on the SkillsUSA website at <http://updates.skillsusa.org>.
3. A contest Proctor will be required to be on site to assist judges. A local industry expert is preferred to serve as the Proctor and shall not be an individual that has been involved with the training of the contestant(s). The Proctor will serve as the

onsite “hands and eyes” for the judges. Proctor will follow instructions from the judges for safety and operations related to the competition. Proctor may be asked by judges to perform several tasks such as operating a portable camera to show specific components or steps, measure parts, or any task that will provide judges with information needed to assist in accurate scoring of the contestant’s work or presentation. However, the Proctor shall not serve as a judge nor have any influence on contestant scores.

4. The contestant’s instructor or advisor shall be on site to observe all competition activities to ensure a safe and healthy competition experience for all participants. That instructor or advisor will not be allowed to interact or interfere with the competitor unless a safety issue arises that requires interaction. Any other support or interaction between the contestant and the instructor/advisor will result in disqualification.
5. All competitors must create a one-page résumé and submit an electronic copy to the technical committee chair at least seven (7) days in advance of the competition. Failure to do so will result in a 10-point penalty. Instructions for submission of the electronic résumé copy will be provided on the SkillsUSA website at <http://updates.skillsusa.org>.
6. All wiring panels, electrical supplies and materials as required by the project assigned.
7. All necessary hand tools will be provided.
8. Calculator (nonprogrammable).
9. Latest edition of the National Electrical Code as of the January prior to the SkillsUSA Championships. **Note:** The NEC handbook is not approved for use in the written test.

Note: Your contest may also require a hard copy of your résumé as part of the actual contest. Check the Contest Guidelines and/or the updates page on the SkillsUSA website: <http://updates.skillsusa.org>.

SCOPE OF THE CONTEST

The contest will assess the ability to perform jobs or skills selected from the following list of competencies as determined by the SkillsUSA Championships technical committee.

Knowledge Performance

The contest will include a written knowledge exam assessing general knowledge of electrical construction wiring. There will be additional questions related to professional development. Written portions may also exist during the skills portion of the contest. Knowledge of terms and principles used in residential wiring will be required for the skill demonstration portion of the contest.

Skill Performance

The skills portion of the contest will include a series of workstations equipped with information and instruction sheets for wiring a residence or completing a commercial installation.

All work must conform to the specifications of the latest edition of the National Electrical Code as of the January prior to the SkillsUSA Championships.

Standards and Competencies

Note for Virtual Competitions: Contestants may not be required to perform all the standards and competencies listed in this section. However, contestants should be prepared to perform components in all areas. Prior to the competition, the technical committee may determine which standards and competencies contestants will be perform for the virtual contests. The technical committee will determine if additional information is needed for contestants prior to the competition. These changes will be posted on the SkillsUSA Championships contest update website at: <http://updates.skillsusa.org>.

ECW 1.0 — Define and apply safety rules and practices in electrical construction wiring according to NEC standards

- 1.1 Apply shop rules and regulations to workstations
- 1.2 List the techniques and practices used to prevent fires

- 1.3 Use electrical and hand tools correctly
- 1.4 Discuss the appropriate methods for lifting and climbing ladders
- 1.5 Explain appropriate clothing for electrical wiring construction
- 1.6 Outline the safety requirements for installing temporary electrical services

ECW 2.0 — Apply knowledge of basic wiring theory according to NEC standards

- 2.1 Use wiring diagrams, schematic diagrams and prints successfully in a scenario
- 2.2 Apply math calculations to circuits and measurements
- 2.3 Discuss theory concepts for troubleshooting

ECW 3.0 — Discuss important trade information and standards according to the NEC

- 3.1 Explain the purpose and use of the National Electric Code
- 3.2 Sketch and diagram effectively
- 3.3 Plan the layout of an electrical installation
- 3.4 Use trade catalogs and publications to solve electrical construction wiring problems
- 3.5 Correlate specifications, prints and job sites

ECW 4.0 — Use basic equipment and procedures defined by industry standards

- 4.1 Discuss techniques of residential and commercial wiring
- 4.2 Demonstrate wire-pulling techniques

ECW 5.0 — Apply knowledge of service loads and electrical safety to electrical construction wiring situations

- 5.1 Compute service loads
- 5.2 Calculate individual service loads
- 5.3 Determine the number of outlets permitted in a circuit
- 5.4 Compute the size of service entrance conductors
- 5.5 Use any wire types listed in NEC 310.16

ECW 6.0 — Install a service entrance to meet NEC standards

- 6.1 Install a main service panel and sub-panel
- 6.2 Install circuit breakers in a panel

- 6.3 Install a service entrance cable to service drop
- 6.4 Install temporary electrical service
- 6.5 Install equipment disconnect
- 6.6 Install meter bases

ECW 7.0 — Install switch boxes and outlet boxes to meet NEC standards

- 7.1 Install box hangers
- 7.2 Install recess boxes for outlets
- 7.3 Install hangable boxes
- 7.4 Install octagon boxes
- 7.5 Install surface mount boxes
- 7.6 Install recessed fixture housing in a ceiling
- 7.7 Install outlet boxes in drywall, lath plaster or paneled walls
- 7.8 Install telephone boxes in drywall, lath plaster or paneled walls

ECW 8.0 — Maintain already existing wiring to meet NEC standards

- 8.1 Diagnose and repair incandescent lights
- 8.2 Replace existing receptacles and switches
- 8.3 Troubleshoot a branch circuit
- 8.4 Test wiring for correct voltages

ECW 9.0 — Rough in, connect and install electrical devices to meet NEC standards

- 9.1 Rough in, connect and install a single pole switch
- 9.2 Rough in, connect and install a three-way switch
- 9.3 Rough in, connect and install a four-way switch
- 9.4 Rough in, connect and install a duplex grounded receptacle
- 9.5 Rough in, connect and install a 120–240 volt distribution panel
- 9.6 Rough in, connect and install a door chime system
- 9.7 Rough in, connect and install a ground fault interrupting device
- 9.8 Rough in, connect and install an emergency warning system
- 9.9 Rough in, connect and install a photoelectric cell control
- 9.10 Rough in, connect and install a surface raceway
- 9.11 Rough in, connect and install an exterior lighting fixture

- 9.12 Rough in, connect and install lighting dimmers
- 9.13 Rough in, connect and install TV outlets
- 9.14 Rough in, connect and install telephone outlets
- 9.15 Rough in, connect and install emergency lighting systems
- 9.16 Rough in, connect and install appliance circuits
- 9.17 Rough in, connect and install occupancy sensor
- 9.18 Rough in, connect and install motion sensor

ECW 10.0 — Install PVC and EMT conduit to meet NEC standards

- 10.1 Make 90-degree bends from measurements
- 10.2 Make offset bends from measurements
- 10.3 Make back-to-back bends from measurements
- 10.4 Make saddle bends from measurements
- 10.5 Determine correct conduit measurements

ECW 11.0 — Install telecommunications infrastructure to meet current TIA/EIA 570 standards

- 11.1 Install a coaxial cable with “F” type connectors and terminating hardware
- 11.2 Install unshielded twisted-pair cable, connectors and terminating hardware
- 11.3 Install 110-type terminating hardware

ECW 12.0 — Apply knowledge of NEC Chapter 5 Special Occupancies

ECW 13.0 — Apply knowledge of the International Energy Conservation Code

Committee Identified Academic Skills

The technical committee has identified that the following academic skills are embedded in this contest.

Math Skills

- Use fractions, decimals and percents to solve practical problems.
- Calculate and measure angles.
- Find perimeter area and volume of two- and three-dimensional objects.
- Apply Pythagorean Theorem.

- Solve problems using proportions, formulas and functions.

Science Skills

- Use knowledge of mechanical, chemical and electrical energy.
- Use knowledge of the atom theory including principles of electricity and magnetism.
- Use knowledge of static electricity, current electricity and circuits.

Language Arts Skills

- Demonstrate knowledge of appropriate reference materials.

Connections to National Standards

State-level academic curriculum specialists identified the following connections to national academic standards.

Math Standards

- Numbers and operations.
- Algebra.
- Geometry.
- Measurement.
- Problem solving.
- Communication.
- Connections.
- Representation.

Source: NCTM Principles and Standards for School Mathematics. For more information, visit: <http://www.nctm.org>.

Science Standards

- Understands the structure and properties of matter.
- Understands the sources and properties of energy.
- Understands forces and motion.
- Understands the nature of scientific inquiry.

Source: McREL compendium of national science standards. To view and search the compendium, visit: www2.mcrel.org/compendium/browse.asp.

Language Arts Standards

- Students adjust their use of spoken, written, and visual language (e.g., conventions, style, vocabulary) to

communicate effectively with a variety of audiences and for different purposes.

- Students use a variety of technological and information resources (e.g., libraries, databases, computer networks, video) to gather and synthesize information and to create and communicate knowledge.
- Students use spoken, written, and visual language to accomplish their own purposes (e.g., for learning, enjoyment, persuasion, and the exchange of information).

Source: IRA/NCTE Standards for the English Language Arts.

To view the standards, visit: www.ncte.org/standards.



CLOTHING CLASSIFICATIONS

With Photos

Class A: SkillsUSA Attire:

- Red SkillsUSA blazer, windbreaker or sweater, or black or red SkillsUSA jacket.
- Button-up, collared, white dress shirt (accompanied by a plain, solid black tie), white blouse (collarless or small-collared) or white turtleneck, with any collar not to extend into the lapel area or the blazer, sweater, windbreaker or jacket.
- Black dress slacks (accompanied by black dress socks or black or skin-tone seamless hose) or black dress skirt (knee-length, accompanied by black or skin-tone seamless hose).
- Black dress shoes.



Class B: Healthcare Attire

- Official blue scrubs.
- Scrubs should fit appropriately for all health contests and should be properly hemmed and wrinkle free. Only plain, white, collarless T-shirts may be worn underneath the scrubs. Hair must be pinned up and off the collar.
- White socks or skin-tone seamless hose.
- Health-professionals white or black leather work shoes.
- Shoes must be all-white or black leather (no canvas), completely enclosed (no open-toe or open-heel). Athletic-style shoes that meet the criteria are acceptable.



Class C: Contest Specific — Manufacturing/Construction Khaki Attire

- Official SkillsUSA khaki short-sleeve work shirt and pants.
- Black, brown or tan leather work shoes.

Note: Safety glasses must have side shields or goggles (prescription glasses may be used only if they are equipped with side shields. If not, they must be covered with goggles).



Class D: Contest Specific — Blue Attire

- Official SkillsUSA light blue work shirt.
- Navy pants.
- Black, brown or tan leather work safety shoes (with protective toe cap).

Note: Safety glasses with side shields or goggles (prescription glasses may be used only if they are equipped with side shields. If not, they must be covered with goggles).



Class E: Contest specific — Business Casual

- Official SkillsUSA white polo shirt.
- Black dress slacks (accompanied by black dress socks or black or skin-tone seamless hose) or black dress skirt (knee-length, accompanied by black or skin-tone seamless hose).
- Black leather closed-toe dress shoes.



Class F: Contest Specific — Cosmetology

- Official SkillsUSA white dress shirt.
- Black dress slacks.
- Black socks or black or skin-tone seamless hose.
- Black leather work or dress shoes.

Note: The Official SkillsUSA white cosmetology smock or apron can be worn with the white dress shirt.



Class G: Culinary/Commercial Baking Attire

- White or black work pants or black-and-white checkered chef's pants.*
- White chef's jacket.
- White or black leather work shoes (non-slip).
- White apron.
- White neckerchief.
- Side-towels.
- Hairnet.

Note: Chef's hats (toques) will be supplied by the national technical committee, as well as food handlers' gloves.

*** *Black-and-white checkered chef's pants not available through the SkillsUSA Store.***



Class H: Contest Specific — Restaurant Service

- Official SkillsUSA white long-sleeved dress shirt, or long- sleeved plain white collared shirt.
- Black dress slacks (accompanied by black dress socks or black or skin-tone seamless hose) or black dress skirt (knee-length) (accompanied by black or skin-tone seamless hose).
- Plain black tie with no pattern or SkillsUSA black tie.
- Black socks.
- Shined black leather work shoes or black flat heels.

Note: Bistro aprons are the official apron for Restaurant Service and are required. Waiter's jackets, bow ties, vests, cummerbunds or half aprons are not permitted.



Class I: Contest Specific — Welding/Welding Fabrication

- Official SkillsUSA khaki work shirt and pants (both the pants and shirt must be 100% cotton).
- Black, brown, or tan leather work shoes.

Note: Safety glasses with side shields or goggles (prescription glasses may be used only if they are equipped with side shields. If not, they must be covered with goggles).



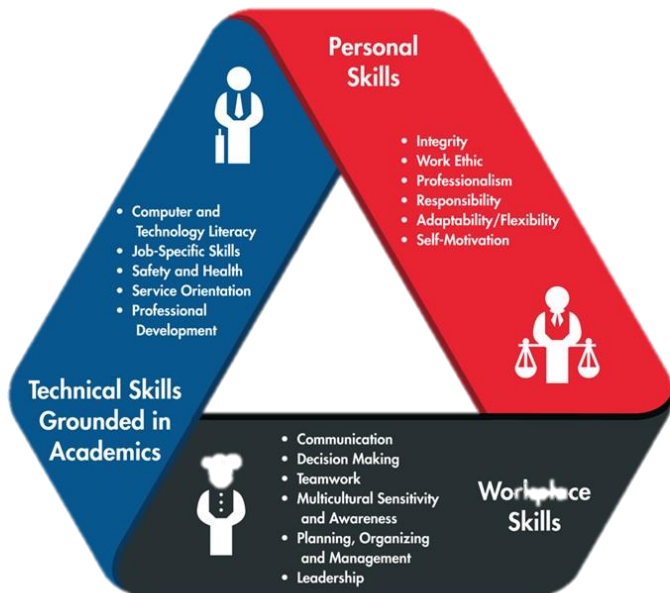
SkillsUSA Scoring Rubric

Virtual Championships

Contestant #		
Skills	Possible Points	Points Earned
Resume	100	
Portfolio (Written Submission)	100	
Video (Skills Demonstration/Narration)	200	
Oral Interview/Role Play	100	
Penalties		
Clothing	-50	
Resume	-100	
Total Score		

Judges Notes:

Resume Scoring Rubric

Category	Points	
Personal Information: Name, address, city, state, zip, phone & email	10	
Skills: Workplace, Technical, Personal *See Framework	20	
Education: High school, technical school, dual- enrollment	20	
Employment: And/or volunteer work or list NA	10	
Activities, Awards and Honors: Should include SkillsUSA membership/activities	20	
References: Or references available upon request	10	
Spelling, Punctuation & Grammar	10	
More than one page	-10	

NEW for 2021

You must include the link(s) to your digital documents and/or videos in your resume and save as a PDF.

Directions:

Step 1: Record your video submission using a digital platform like Zoom

Step 2: Open Google Drive or One Drive and upload your Zoom file

Step 3: Right click on your Zoom file and select “get link”. **Remove Restrictions** so anyone with the link can access your file

Step 4: Copy that link and paste it into the bottom of your resume

Step 5: If your contest requires a written submission, repeat the process of uploading your document to your Google Drive or One Drive, and then copy the link and paste into your resume

Step 6: Once your resume is complete, click File, Save As, and scroll down to select PDF, then Save

Click [Here](#) to view a sample resume with embedded links