

*** Sky is the limit

Stocks with All Time Highs

Daily interval

The Nasdaq Stock Market

Foto by Bill Jelen



All tickers with ATH sorted by total traded: Close * Volume, in descending order:

CZR,ORLY,FTNT,FAST,TROW,ASO,TSCO,ICLR,CROX,SIVB,STLD,POOL,WLTW,NDAQ,SBNY,VTIP,KBWB,LKQ,CINF,NTRS,PRAH,TW,DVY,CG,ARCB,OAS,IUSV,FWAA,FTCS,HUBG,IHRT,KALU,RCKY,EBC,FWRD,FAB,EXLS,PKW,ICFI,FNK,WOOD,MYRG,CENTA,WIRE,SFBS,CIGI,MUDSW,NGMS,OBNK,XOG

CZR.US,ORLY.US,FTNT.US,FAST.US,TROW.US,ASO.US,TSCO.US,ICLR.US,CROX.US,SIVB.US,STLD.US,POOL.US,WLTW.US,NDAQ.US,SBNY.US,VTIP.US,KBWB.US,LKQ.US,CINF.US,NTRS.US,PRAH.US,TW.US,DVY.US,CG.US,ARCB.US,OAS.US,IUSV.US,FWAA.US,FTCS.US,HUBG.US,IHRT.US,KALU.US,RCKY.US,EBC.US,FWRD.US,FAB.US,EXLS.US,PKW.US,ICFI.US,FNK.US,WOOD.US,MYRG.US,CENTA.US,WIRE.US,SFBS.US,CIGI.US,MUDSW.US,NGMS.US,OBNK.US,XOG.US

All tickers with ATH sorted alphabetically

ARCB,ASO,CENTA,CG,CIGI,CINF,CROX,CZR,DVY,EBC,EXLS,FAB,FAST,FNK,FTCS,FTNT,FWAA,FWRD,HUBG,ICFI,ICLR,IHRT,IUSV,KALU,KBWB,LKQ,MUDSW,MYRG,NDAQ,NGMS,NTRS,OAS,OBNK,ORLY,PKW,POOL,PRAH,RCKY,SBNY,SFBS,SIVB,STLD,TROW,TSCO,TW,VTIP,WIRE,WLTW,WOOD,XOG

Top 20 stocks with ATH sorted by total traded: Close * Volume, in descending order:

CZR	646454066.56
ORLY	308653277.02
FTNT	244517732.84
FAST	190225058.94
TROW	186617858.17
ASO	182878881.32
TSCO	173687673.51
ICLR	171417839.56
CROX	166984774.56
SIVB	160719488.55
STLD	156842648.48
POOL	142773127.28
WLTW	137468388.48
NDAQ	117636444.95
SBNY	114971736.04
VTIP	107572809.94
KBWB	102675205.4
LKQ	98517255.68
CINF	93823086.64
NTRS	90895996.2





Scan date: 06-05-2021-04_12 | Week number: 18
 Sector: Consumer Cyclical | Industry: Resorts & Casinos | GicGroup: Consumer Services
 WebURL: <http://www.caesars.com> | IPOdate: 1989-12-13
 EBITDA: 621000000 | Trailing PE: 0 | Revenue TTM (Trailing 12 Months): 3465999872 | Market Capitalization Mln: 21455.7594
 Previous All time high date: 2021-04-28 | Previous ath value (red line): 102.6 Previous close: 102.98
 Total traded /vol*Close/ : 646454066.6

News sentiment **** Negative** **** Positive** **** Neutral**

- <https://www.fool.com/investing/2021/05/05/why-caesars-entertainments-shares-popped-104-on-we/>
- <https://www.fool.com/investing/2021/05/05/nasdaq-bounces-as-activision-levels-up-caesars-see/>
- <https://www.youtube.com/watch?v=nedpMeSnlpk>
- <https://pulse2.com/czr-stock-from-95-53-to-103-7-82-increase-pre-market-explanation/>
- <https://seekingalpha.com/article/4424357-caesars-entertainments-czr-ceo-tom-reeg-on-q1-2021-results-earnings-call-transcript>

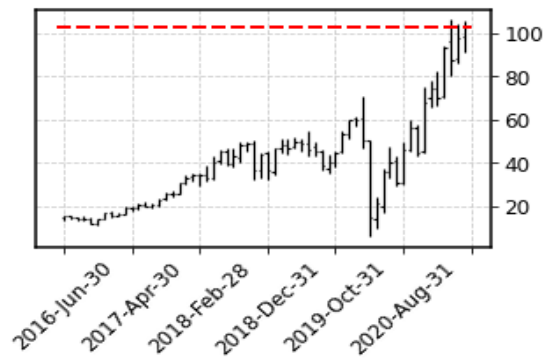
Daily chart



Weekly chart



Monthly chart



Caesars Entertainment, Inc. operates as a gaming and hospitality company in the United States. The company operates casinos, including poker, keno, and race and online sportsbooks; dining venues, bars, nightclubs, and lounges; hotels; and entertainment venues. It also offers staffing and management services; accessories, souvenirs, and decorative items through retail stores; and online sports betting and iGaming services. As of December 31,2020, the company owned, leased, or managed 54 domestic properties in 16 states, consisting of approximately 54,600 slot machines, video lottery terminals, and e-tables; 3,200 table games; and 47,700 hotel rooms. Caesars Entertainment, Inc. was founded in 1937 and is based in Reno, Nevada.



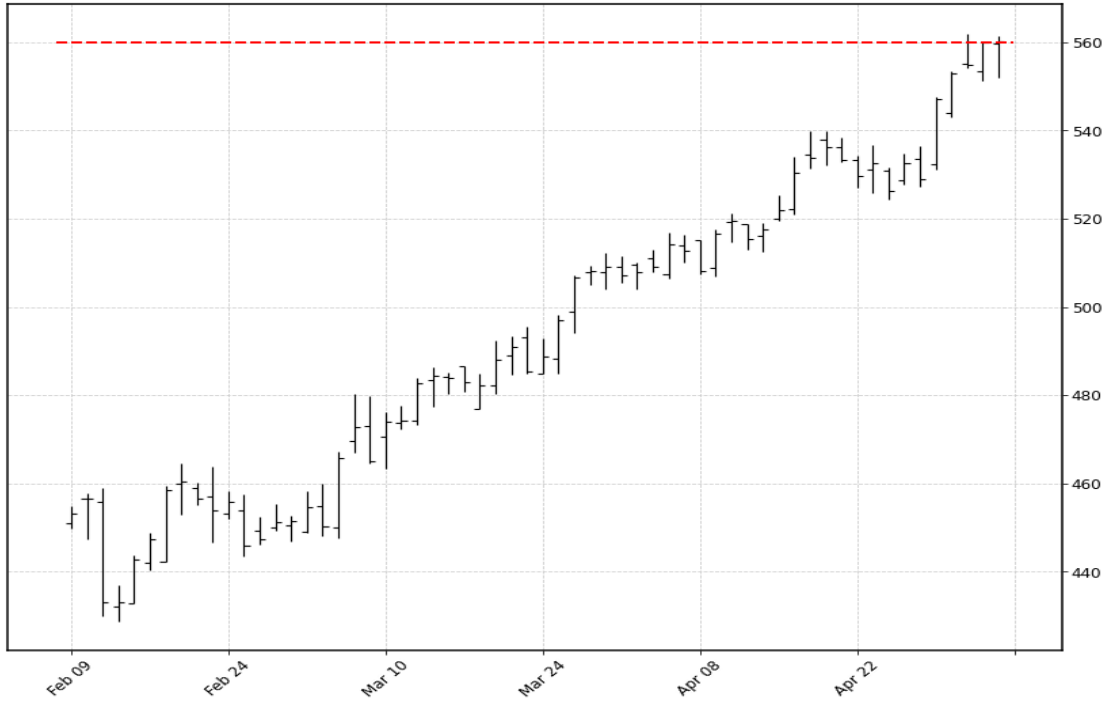


Scan date: 06-05-2021-04_12 | Week number: 18
 Sector: Consumer Cyclical | Industry: Specialty Retail | GicGroup: Retailing
 WebURL: <http://www.oreillyauto.com> | IPOdate: 1993-04-22
 EBITDA: 3010708992 | Trailing PE: 20.927 | Revenue TTM (Trailing 12 Months): 12218904576 | Market Capitalization Mln: 38884.2332
 Previous All time high date: 2021-05-04 | Previous ath value (red line): 559.88 Previous close: 560.09
 Total traded /vol*Close/ : 308653277.0

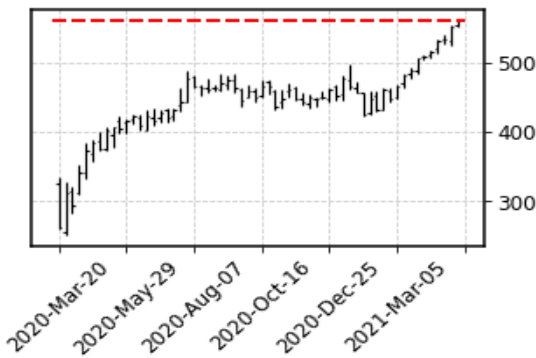
News sentiment **** Negative** **** Positive** **** Neutral**

- <https://www.forbes.com/sites/qai/2021/05/05/starbucks-general-motors-and-more--thematic-stock-highlights-this-week/>
- <https://www.youtube.com/watch?v=S9ht2nWtztQ>
- <https://www.forbes.com/sites/qai/2021/05/04/top-stocks-to-buy-today-as-tech-shares-like-apple-lead-losses/>
- <https://www.zacks.com/stock/news/1493257/oreilly-automotive-only-hits-52-week-high-can-the-run-continue>
- <https://seekingalpha.com/article/4422653-oreilly-automotive-inc-orly-ceo-gregory-johnson-on-q1-2021-results-earnings-call-transcript>

Daily chart



Weekly chart



Monthly chart



O'Reilly Automotive, Inc., together with its subsidiaries, operates as a retailer of automotive aftermarket parts, tools, supplies, equipment, and accessories in the United States. The company provides new and remanufactured automotive hard parts and maintenance items, such as alternators, batteries, brake system components, belts, chassis parts, driveline parts, engine parts, fuel pumps, hoses, starters, temperature control, water pumps, antifreeze, appearance products, engine additives, filters, fluids, lighting products, and oil and wiper blades; and accessories, including floor mats, seat covers, and truck accessories. Its stores offer auto body paint and related materials, automotive tools, and professional service provider service equipment. The company's stores also offer enhanced services and programs comprising used oil, oil filter, and battery recycling; battery, wiper, and bulb replacement; battery diagnostic testing; electrical and module testing; check engine light code extraction; loaner tool program; drum and rotor resurfacing; custom hydraulic hoses; and professional paint shop mixing and related materials. Its stores provide do-it-yourself and professional service provider customers a selection of products for domestic and imported automobiles, vans, and trucks. As of December 31, 2020, the company operated 5,616 stores. O'Reilly Automotive, Inc. was founded in 1957 and is headquartered in Springfield, Missouri.



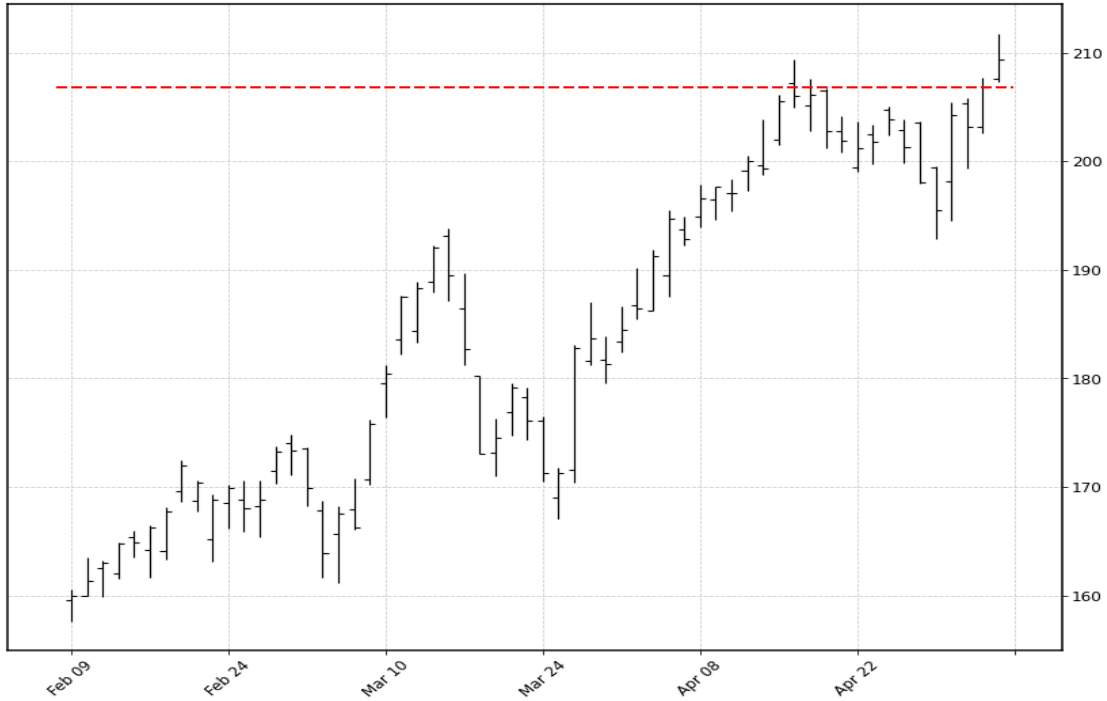


Scan date: 06-05-2021-04_12 | Week number: 18
 Sector: Technology | Industry: Software-Infrastructure | GicGroup: Software & Services
 WebURL: <http://www.fortinet.com> | IPOdate: 2009-11-18
 EBITDA: 600700032 | Trailing PE: 71.4953 | Revenue TTM (Trailing 12 Months): 2727000064 | Market Capitalization Mln: 34515.6239
 Previous All time high date: 2021-05-04 | Previous ath value (red line): 206.78 Previous close: 209.38
 Total traded /vol*Close/ : 244517732.8

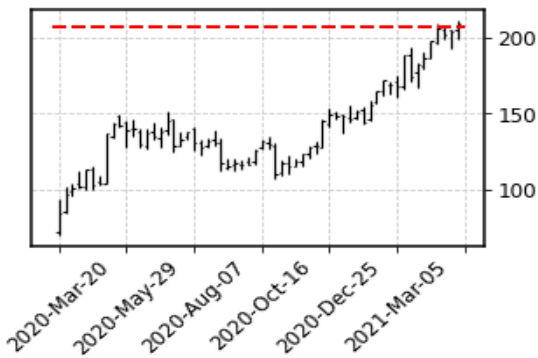
News sentiment **** Negative** **** Positive** **** Neutral**

- <https://www.youtube.com/watch?v=nop-kLGeAn8>
- <https://www.forbes.com/sites/naeemaslam/2021/05/03/three-nasdaq-stocks-that-could-help-you-achieve-financial-success/>
- <https://www.fool.com/investing/2021/05/03/reasons-fortinet-still-best-class-cybersecurity-q1/>
- <https://www.zacks.com/stock/news/1492370/fortinet-ftnt-stock-jumps-45-will-it-continue-to-soar>
- <https://www.zacks.com/stock/news/1480110/fortinet-ftnt-stock-gains-on-q1-earnings-beat-upbeat-guidance>

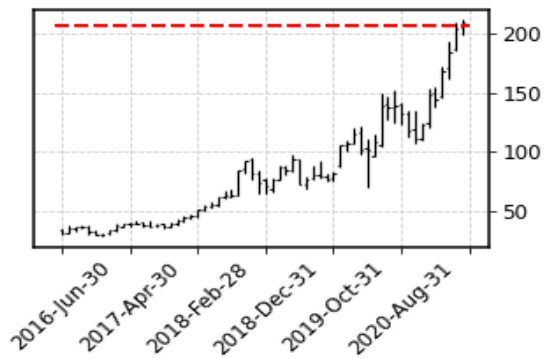
Daily chart



Weekly chart



Monthly chart



Fortinet, Inc. provides broad, integrated, and automated cybersecurity solutions in the Americas, Europe, the Middle East, Africa, and the Asia Pacific. It offers FortiGate hardware and software licenses that provide various security and networking functions, including firewall, intrusion prevention, anti-malware, virtual private network, application control, web filtering, anti-spam, and wide area network acceleration. The company also provides FortiSwitch product family that offers secure switching solutions for connecting customers their end devices; FortiAP product family, which provides secure wireless networking solutions; FortiExtender, a hardware appliance; FortiAnalyzer product family, which offers centralized network logging, analyzing, and reporting solutions; and FortiManager product family that provides central and scalable management solution for its FortiGate products. It offers FortiWeb product family provides web application firewall solutions; FortiMail product family that secure email gateway solutions; FortiSandbox technology that delivers proactive detection and mitigation services; FortiClient that provides endpoint protection with pattern-based anti-malware, behavior-based exploit protection, web-filtering, and an application firewall; FortiToken and FortiAuthenticator product families for multi-factor authentication to safeguard systems, assets, and data; and FortiEDR/XDR, an endpoint protection solution that provides both comprehensive machine-learning anti-malware execution and real-time post-infection protection. The company provides security subscription, technical support, professional, and training services. It sells its security solutions to channel partners and directly to various customers in telecommunications, technology, government, financial services, education, retail, manufacturing, and healthcare industries. It has strategic alliance with Linksys. The company was founded in 2000 and is headquartered in Sunnyvale, California.





Scan date: 06-05-2021-04_12 | Week number: 18
 Sector: Industrials | Industry: Industrial Distribution | GicGroup: Capital Goods
 WebURL: <http://www.fastenal.com> | IPOdate: 1990-03-26
 EBITDA: 1315200000 | Trailing PE: 35.8808 | Revenue TTM (Trailing 12 Months): 5697299968 | Market Capitalization Mln: 31124.4042
 Previous All time high date: 2021-05-04 | Previous ath value (red line): 53.29 Previous close: 54.18
 Total traded /vol*Close/ : 190225058.9

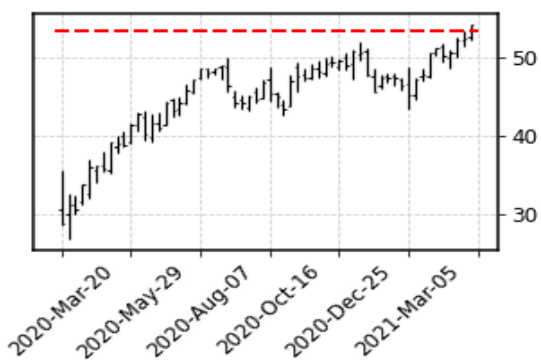
News sentiment **** Negative** **** Positive** **** Neutral**

- <https://www.zacks.com/stock/news/1441748/construction-stock-q1-earnings-due-on-apr-26-pch-lii-otis-ssd>
- <https://www.zacks.com/stock/news/1431582/where-should-you-be-investing-as-the-economy-recovers>
- <https://seekingalpha.com/article/4418919-fastenal-companys-fast-ceo-dan-florness-on-q1-2021-results-earnings-call-transcript>
- <https://www.zacks.com/stock/news/1390238/fastenal-fast-q1-earnings-meet-revenues-miss-estimates>
- <https://www.zacks.com/stock/news/1389222/fastenal-fast-q1-earnings-meet-estimates>

Daily chart



Weekly chart



Monthly chart



Fastenal Company, together with its subsidiaries, engages in the wholesale distribution of industrial and construction supplies in the United States, Canada, Mexico, North America, and internationally. It offers fasteners, and related industrial and construction supplies under the Fastenal name. The company's fastener products include threaded fasteners, bolts, nuts, screws, studs, and related washers, which are used in manufactured products and construction projects, as well as in the maintenance and repair of machines. It also offers miscellaneous supplies and hardware, including pins, machinery keys, concrete anchors, metal framing systems, wire ropes, strut products, rivets, and related accessories. The company serves the manufacturing market comprising original equipment manufacturers; maintenance, repair, and operations; and non-residential construction market, which includes general, electrical, plumbing, sheet metal, and road contractors. It also serves farmers, truckers, railroads, mining companies, schools, and retail trades; and oil exploration, production, and refinement companies, as well as federal, state, and local governmental entities. The company distributes its products through a network of 3,268 in-market locations and 16 distribution centers. Fastenal Company was founded in 1967 and is headquartered in Winona, Minnesota.





Scan date: 06-05-2021-04_12 | Week number: 18
 Sector: Financial Services | Industry: Asset Management | GicGroup: Diversified Financials
 WebURL: <http://www.troweprice.com> | IPOdate: 1989-09-13
 EBITDA: 3124199936 | Trailing PE: 15.6938 | Revenue TTM (Trailing 12 Months): 6570899968 | Market Capitalization Mln: 41925.2552
 Previous All time high date: 2021-05-03 | Previous ath value (red line): 182.69 Previous close: 185.33
 Total traded /vol*Close/ : 186617858.2

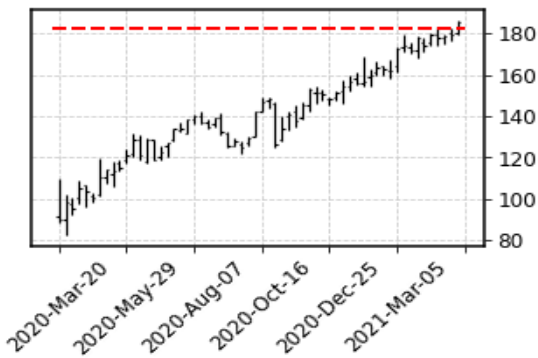
News sentiment **** Negative** **** Positive** **** Neutral**

- <https://seekingalpha.com/article/4423911-altria-t-rowe-price-2-safest-dividend-aristocrats-you-can-buy-with-market-at-all-time-highs>
- <https://www.zacks.com/stock/news/1473036/t-rowe-price-trow-beats-q1-earnings-and-revenue-estimates>
- <https://www.zacks.com/stock/news/1473041/t-rowe-price-trow-q1-earnings-beat-estimates-aum-grows>
- <https://www.zacks.com/stock/news/1462560/will-solid-equity-markets-aid-t-rowe-price-trow-q1-earnings>
- <https://www.zacks.com/stock/news/1436783/t-rowe-price-trow-earnings-expected-to-grow-should-you-buy>

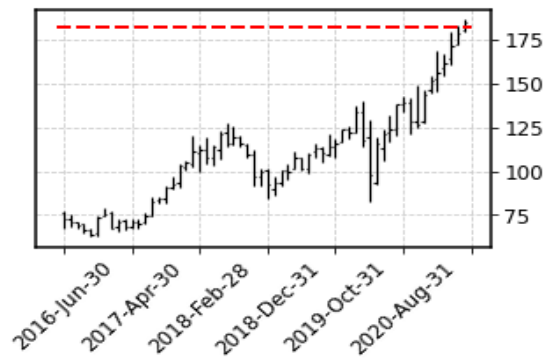
Daily chart



Weekly chart



Monthly chart



T. Rowe Price Group, Inc. is a publicly owned investment manager. The firm provides its services to individuals, institutional investors, retirement plans, financial intermediaries, and institutions. It launches and manages equity and fixed income mutual funds. The firm invests in the public equity and fixed income markets across the globe. It employs fundamental and quantitative analysis with a bottom-up approach. The firm utilizes in-house and external research to make its investments. It employs socially responsible investing with a focus on environmental, social, and governance issues. It makes investment in late-stage venture capital transactions and usually invests between \$3 million and \$5 million. The firm was previously known as T. Rowe Group, Inc. and T. Rowe Price Associates, Inc. T. Rowe Price Group, Inc. was founded in 1937 and is based in Baltimore, Maryland, with additional offices in Colorado Springs, Colorado; Owings Mills, Maryland; San Francisco, California; Tampa, Florida; Toronto, Ontario; Hellerup, Denmark; Amsterdam, The Netherlands; Luxembourg, Grand Duchy of Luxembourg; Zurich, Switzerland; Dubai, United Arab Emirates; London, United Kingdom; Sydney, New South Wales; Hong Kong; Tokyo, Japan; Singapore; Frankfurt, Germany, Madrid, Spain, Milan, Italy, Stockholm, Sweden, Melbourne, Australia, and Amsterdam, Netherlands.



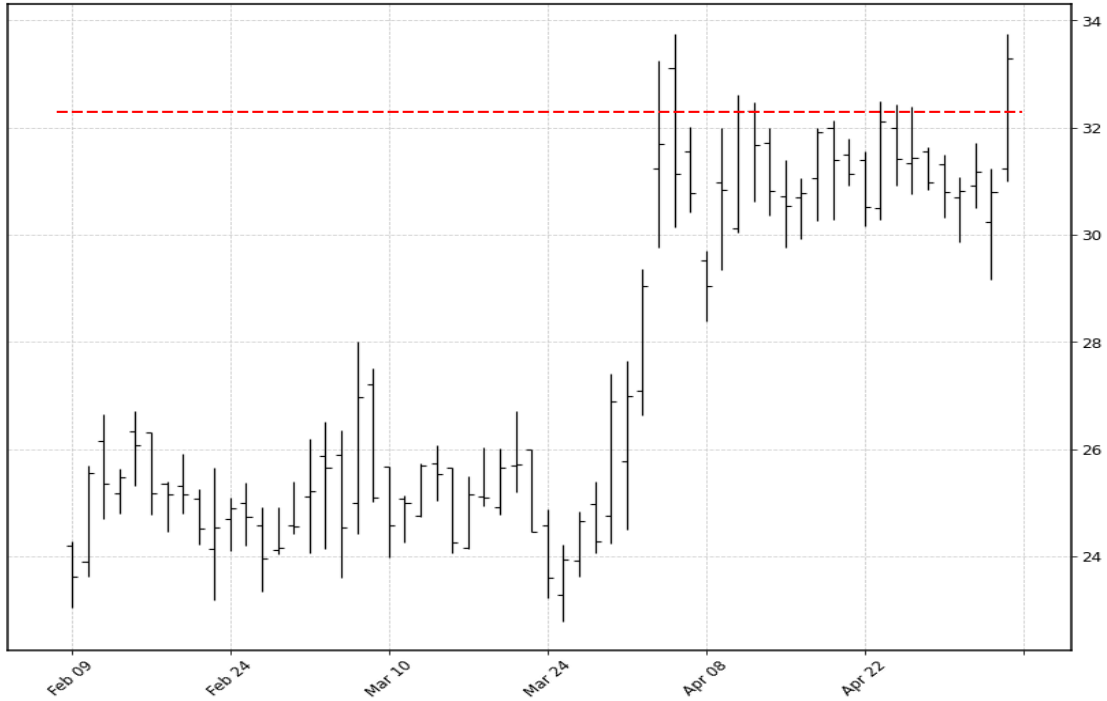


Scan date: 06-05-2021-04_12 | Week number: 18
 Sector: Other | Industry: Other | GicGroup: Retailing
 WebURL: <http://www.academy.com> | IPOdate: 2020-10-02
 EBITDA: 540678976 | Trailing PE: 0 | Revenue TTM (Trailing 12 Months): 5689232896 | Market Capitalization Mln: 3122.622
 Previous All time high date: 2021-04-12 | Previous ath value (red line): 32.29 Previous close: 33.29
 Total traded /vol*Close/ : 182878881.3

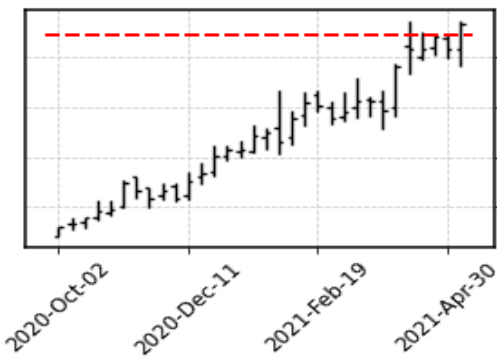
News sentiment ** Negative ** Positive ** Neutral

- <https://www.prnewswire.com/news-releases/academy-sports--outdoors-announces-pricing-of-secondary-offering-of-common-stock-and-concurrent-share-repurch>
- <https://www.prnewswire.com/news-releases/academy-sports--outdoors-announces-secondary-offering-of-common-stock-and-concurrent-share-repurchase-30128>
- <https://www.zacks.com/stock/news/1479349/is-academy-sports-and-outdoors-inc-aso-stock-undervalued-right-now>
- <https://www.schaeffersresearch.com/content/analysis/2021/04/23/sporting-goods-retail-stock-up-more-than-50-in-2021>
- <https://www.zacks.com/commentary/1419834/top-ranked-momentum-stocks-to-buy-for-april-19th>

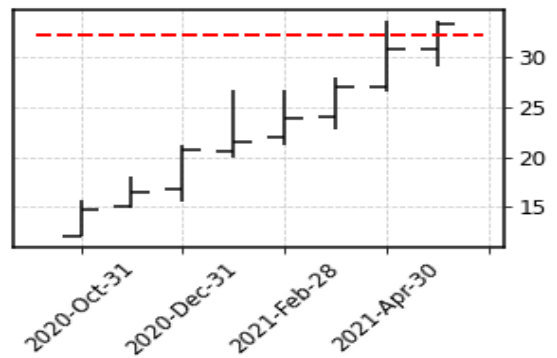
Daily chart



Weekly chart



Monthly chart



Academy Sports and Outdoors, Inc., through its subsidiaries, operates as a sporting goods and outdoor recreational products retailer in the United States. The company sells coolers and drinkware, camping accessories, camping equipment, sunglasses, backpacks, and sports bags; marine equipment and fishing rods, reels, baits, and equipment; firearms, ammunition, archery and archery equipment, camouflage apparel, waders, shooting accessories, optics, airguns, and hunting equipment; baseball, football, basketball, soccer, golf, racket sports, volleyball, fitness equipment, fitness accessories, and nutrition; and patio equipment, outdoor cooking, wheeled goods, trampolines, play sets, watersports, pet equipment, electronics, and watches. It also offers outdoor apparel, seasonal apparel, denim, work apparel, graphic t-shirts, and accessories; boys and girls outdoor and athletic apparel; sporting apparel, apparel for fitness and exercise, and other accessories; professional and collegiate team licensed apparel and accessories; casual shoes and slippers, work and western boots, youth footwear, socks, and hunting footwear; and running shoes, athletic shoes, sport specific shoes, and training shoes. The company sells its products under the Academy Sports + Outdoors, Magellan Outdoors, BCG, O'rageous, and Outdoor Gourmet brand names. As of January 30, 2021, it operated 259 Academy Sports + Outdoors retail locations in 16 states and three distribution centers located in Katy, Texas, Twiggs County, Georgia, and Cookeville, Tennessee. The company also sells merchandise to customers through academy.com website. Academy Sports and Outdoors, Inc. was founded in 1938 and is based in Katy, Texas.





Scan date: 06-05-2021-04_12 | Week number: 18
 Sector: Consumer Cyclical | Industry: Specialty Retail | GicGroup: Retailing
 WebURL: <http://www.tractorsupply.com> | IPOdate: 1994-02-17
 EBITDA: 1531719040 | Trailing PE: 26.6801 | Revenue TTM (Trailing 12 Months): 11453500416 | Market Capitalization Mln: 22383.7983
 Previous All time high date: 2021-05-04 | Previous ath value (red line): 194.38 Previous close: 194.61
 Total traded /vol*Close/ : 173687673.5

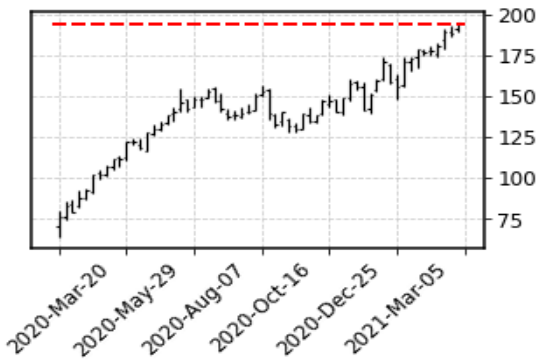
News sentiment **** Negative** **** Positive** **** Neutral**

- <https://www.businesswire.com/news/home/20210504005527/en/Miranda-Lambert-With-Her-Friends-Jack-Ingram-and-Jon-Randall-to-Perform-Intimate-Acoustic-S>
- <https://www.forbes.com/sites/warrenshoulberg/2021/05/02/tractor-supply-11-million-chickens-and-going-strong/>
- <https://www.businesswire.com/news/home/20210430005438/en/Tractor-Supply-Company-Partners-With-Make-A-Wish-on-World-Wish-Day-to-Grant-Boy%E2%8>
- <https://www.fool.com/investing/2021/04/30/dont-waste-your-money-on-penny-stocks-these-3-stoc/>
- <https://www.marketwatch.com/story/rural-economies-recovering-more-quickly-from-covid-than-other-areas-to-tractor-supplys-benefit-11619637223>

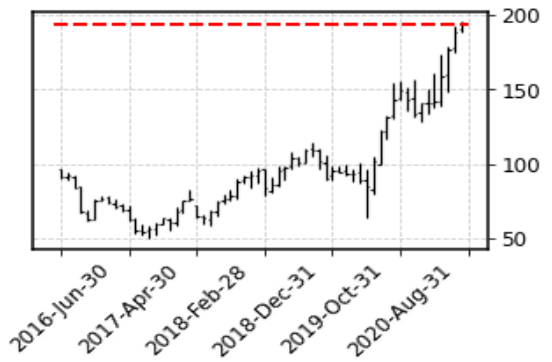
Daily chart



Weekly chart



Monthly chart



Tractor Supply Company operates as a rural lifestyle retailer in the United States. The company offers a selection of merchandise, including equine, livestock, pet, and small animal products necessary for their health, care, growth, and containment; hardware, truck, towing, and tool products; seasonal products, such as heating products, lawn and garden items, power equipment, gifts, and toys; work/recreational clothing and footwear; and maintenance products for agricultural and rural use. It provides its products under the 4health, Producer's Pride, American Farmworks, Red Shed, Bit & Bridle, Redstone, Blue Mountain, Retriever, C.E. Schmidt, Ridgecut, Countyline, Royal Wing, Dumor, Strive, Groundwork, Traveller, Huskee, Treeline, JobSmart, TSC Tractor Supply Co, Paws & Claws, and Untamed brands. As of December 26, 2020, it operated 1,923 Tractor Supply and Del's retail stores in 49 states, as well as 182 Petsense stores in 25 states. The company operates its retail stores under the Tractor Supply Company, Del's Feed & Farm Supply, and Petsense names. It also operates websites under the TractorSupply.com and Petsense.com names. The company sells its products to recreational farmers, ranchers, and others, as well as tradesmen and small businesses. The company was founded in 1938 and is based in Brentwood, Tennessee.





Scan date: 06-05-2021-04_12 | Week number: 18
 Sector: Healthcare | Industry: Diagnostics & Research | GicGroup: Pharmaceuticals, Biotechnology & Life Sciences
 WebURL: <http://www.iconplc.com> | IPOdate: 1998-05-15
 EBITDA: 499020992 | Trailing PE: 34.8126 | Revenue TTM (Trailing 12 Months): 2940384000 | Market Capitalization Mln: 11685.3862
 Previous All time high date: 2021-01-20 | Previous ath value (red line): 220.96 Previous close: 221.98
 Total traded /vol*Close/ : 171417839.6

News sentiment **** Negative** **** Positive** **** Neutral**

- <https://www.businesswire.com/news/home/20210505005473/en/ICON-plc-to-Present-at-the-BofA-Securities-2021-Virtual-Healthcare-Conference-and-the-UBS-V>
- <https://seekingalpha.com/article/4423390-icon-public-limited-company-iclr-ceo-steve-cutler-on-q1-2021-results-earnings-call-transcript>
- <https://www.zacks.com/stock/news/1469499/icon-plc-iclr-q1-earnings-and-revenues-top-estimates>
- <https://www.businesswire.com/news/home/20210428006018/en/ICON-Reports-First-Quarter-2021-Results/>
- <https://www.gurufocus.com/news/1402298/5-profitable-stocks-with-a-margin-of-safety>

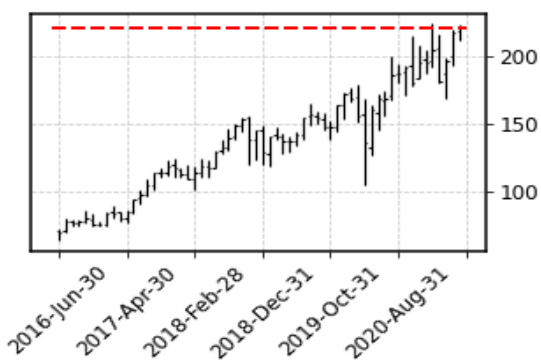
Daily chart



Weekly chart



Monthly chart



ICON Public Limited Company, a clinical research organization, provides outsourced development and commercialization services in Ireland, rest of Europe, the United States, and internationally. The company specializes in the strategic development, management, and analysis of programs that support various stages of the clinical development process from compound selection to Phase I-IV clinical studies. It offers clinical development services, including product development planning, strategic consulting, study protocol preparation, clinical pharmacology, pharmacokinetic and pharmacodynamic analysis, site feasibility, patient recruitment and retention, digital patient and site, project management, clinical operations/monitoring, patient centric monitoring, data management, and adaptive and virtual trial services. The company's clinical development services also comprise medical imaging, biostatistics, medical affairs, pharmacovigilance, strategic regulatory, electronic endpoint adjudication, medical writing and publishing, interactive response technologies, functional solutions, strategic resourcing central laboratory, bioanalytical laboratory, biomarker development, strategy and analytics, late phase research, patient centered science, and medical device and diagnostics research services, as well as access, commercialization, and communication services, and research trials for us government agencies. It serves pharmaceutical, biotechnology, and medical device industries, as well as government and public health organizations. The company was incorporated in 1990 and is headquartered in Dublin, Ireland.



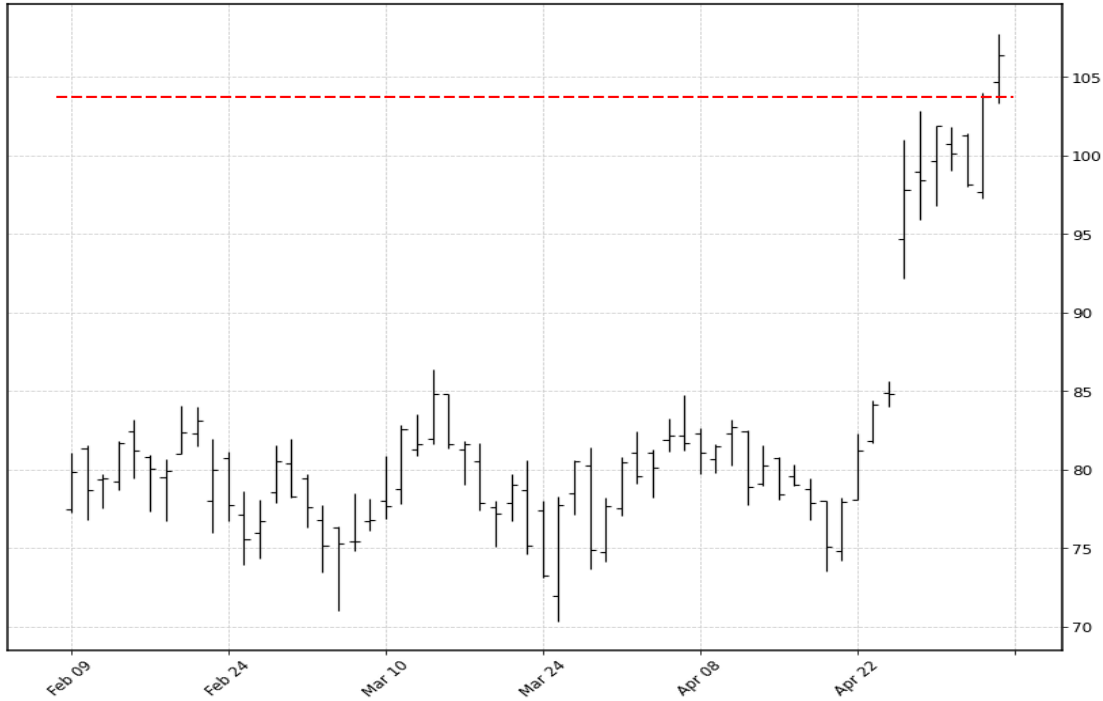


Scan date: 06-05-2021-04_12 | Week number: 18
 Sector: Consumer Cyclical | Industry: Footwear & Accessories | GicGroup: Consumer Durables & Apparel
 WebURL: <http://www.crocs.com> | IPOdate: 2006-02-08
 EBITDA: 382299008 | Trailing PE: 18.1098 | Revenue TTM (Trailing 12 Months): 1564888960 | Market Capitalization Mln: 6949.6468
 Previous All time high date: 2021-05-04 | Previous ath value (red line): 103.7 Previous close: 106.36
 Total traded /vol*Close/ : 166984774.6

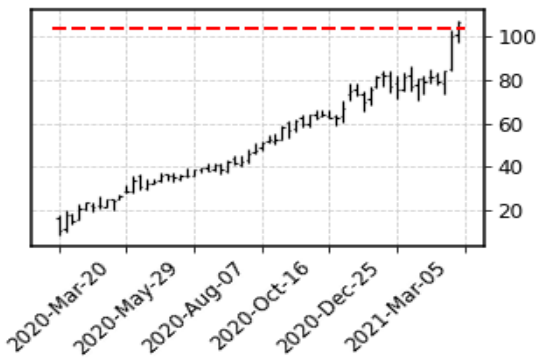
News sentiment **** Negative** **** Positive** **** Neutral**

- <https://www.gurufocus.com/news/1415210/3-stocks-for-growthoriented-investors>
- <https://investorplace.com/2021/05/7-consumer-stocks-to-buy-before-picnic-season-begins/>
- <https://www.zacks.com/stock/news/1492952/top-6-momentum-stocks-for-may-amid-strong-economic-recovery>
- <https://www.youtube.com/watch?v=0NAMcLPHf9s>
- <https://www.zacks.com/commentary/1479556/top-ranked-momentum-stocks-to-buy-for-april-30th>

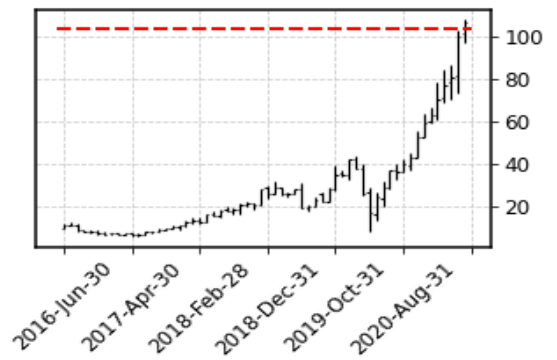
Daily chart



Weekly chart



Monthly chart



Crocs, Inc., together with its subsidiaries, designs, develops, manufactures, markets, and distributes casual lifestyle footwear and accessories for men, women, and children. It offers various footwear products, including sandals, wedges, flips, slides clogs, charms, and shoes under the Crocs brand name. The company sells its products in approximately 80 countries through wholesalers, retail stores, e-commerce sites, and third-party marketplaces. As of December 31, 2020, it had 186 outlet stores, 100 retail stores, 65 store-in-stores, and 13 company-operated e-commerce sites. The company serves in the Americas, the Asia Pacific, Europe, the Middle East, and Africa. Crocs, Inc. was founded in 1999 and is headquartered in Broomfield, Colorado.



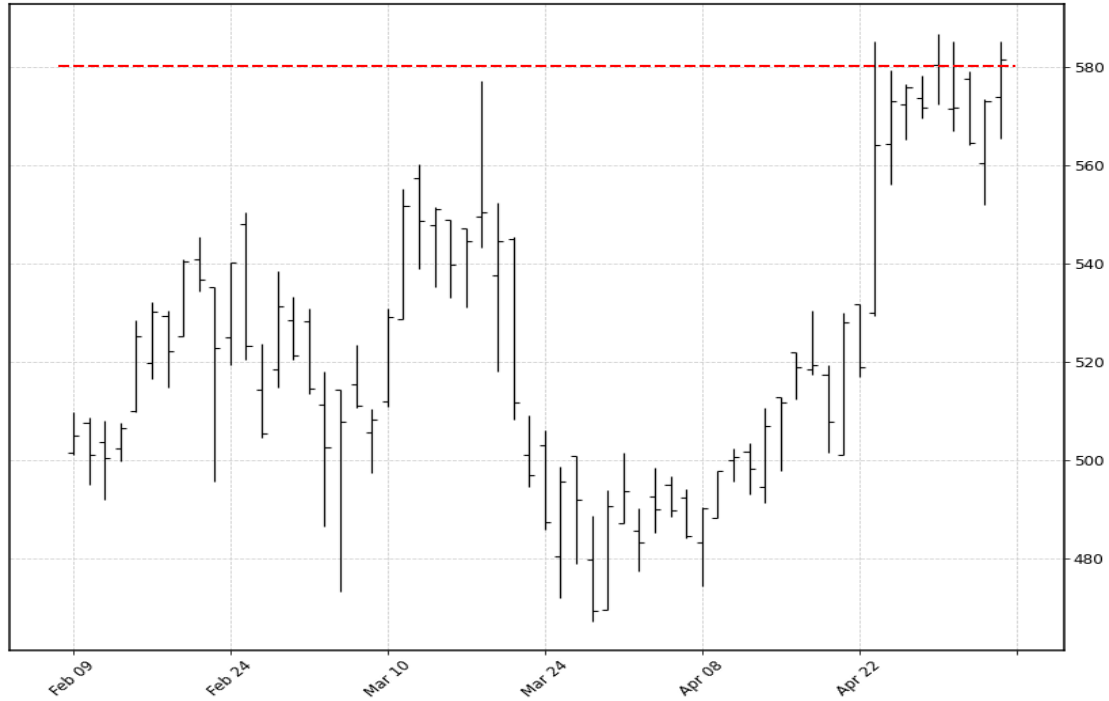


Scan date: 06-05-2021-04_12 | Week number: 18
 Sector: Financial Services | Industry: Banks-Regional | GicGroup: Banks
 WebURL: <http://www.svb.com> | IPOdate: 1990-03-26
 EBITDA: NA | Trailing PE: 19.142 | Revenue TTM (Trailing 12 Months): 4549392896 | Market Capitalization Mln: 31581.3847
 Previous All time high date: 2021-04-29 | Previous ath value (red line): 580.2 Previous close: 581.59
 Total traded /vol*Close/ : 160719488.6

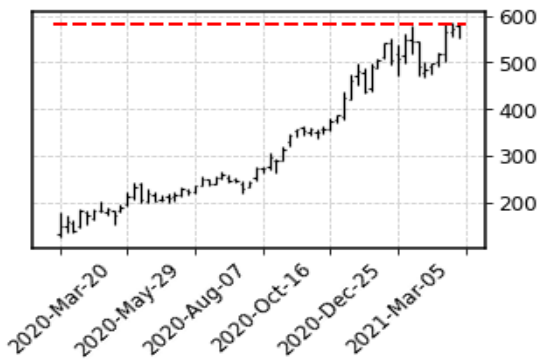
News sentiment **** Negative** **** Positive** **** Neutral**

- <https://www.fool.com/investing/2021/05/05/just-how-high-can-silicon-valley-banks-stock-go/>
- <https://www.fool.com/investing/2021/05/02/2-bank-growth-stocks-to-buy/>
- <https://www.prnewswire.com/news-releases/svb-financial-group-reiterates-that-it-will-not-increase-purchase-price-for-boston-private-301281451.html>
- <https://www.gurufocus.com/news/1411112/5-banks-boosting-earnings>
- <https://www.prnewswire.com/news-releases/svb-financial-group-confirms-announced-purchase-price-for-boston-private-is-best-and-final-301278229.html>

Daily chart



Weekly chart



Monthly chart



SVB Financial Group, a diversified financial services company, provides various banking and financial products and services. The company operates through four segments: Global Commercial Bank, SVB Private Bank, SVB Capital, and SVB Leerink. The Global Commercial Bank segment offers deposit products, such as business and analysis checking, money market, multi-currency, in-country bank, and sweep accounts, as well as merchant, remote capture, lockbox, electronic deposit capture, and fraud control services; credit solutions comprising term loans, equipment and asset-based loans, revolving lines of credit, and credit card programs, as well as mezzanine lending, acquisition finance, and corporate working capital facilities; and payment and cash management products and services, including wire transfer and automated clearing house payment, bill pay, debit and credit cards, account analysis, and disbursement, as well as online and mobile banking services. This segment also provides foreign exchange services; export, import, and standby letter of credit; investment services and solutions; investment advisory services; vineyard development loans; and debt fund investment services. The SVB Private Bank segment offers private banking services, such as mortgages, home equity and capital call lines of credit, restricted stock purchase loans, and other secured and unsecured lending products, as well as cash and wealth management services. The SVB Capital segment provides venture capital investment services that manage funds on behalf of third party limited partner investors. The SVB Leerink segment engages in equity and convertible capital markets, mergers and acquisitions, equity research and sales, trading, and investment banking services. It operates through 30 offices in the United States; and offices in Canada, the United Kingdom, Israel, Germany, Denmark, India, Hong Kong, and China. SVB Financial Group was founded in 1983 and is headquartered in Santa Clara, California.





Scan date: 06-05-2021-04_12 | Week number: 18
 Sector: Basic Materials | Industry: Steel | GicGroup: Materials
 WebURL: <http://www.steeldynamics.com> | IPOdate: 1996-11-21
 EBITDA: 1519512960 | Trailing PE: 16.1444 | Revenue TTM (Trailing 12 Months): 10570979328 | Market Capitalization Mln: 12753.4039
 Previous All time high date: 2021-05-04 | Previous ath value (red line): 59.41 Previous close: 59.96
 Total traded /vol*Close/ : 156842648.5

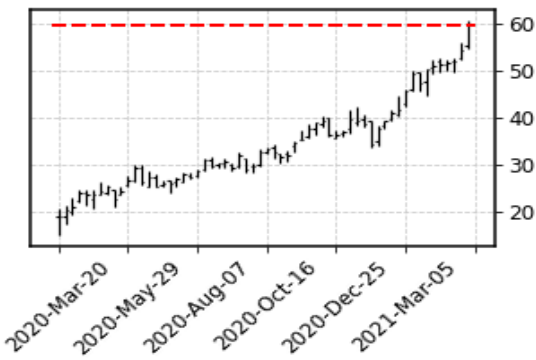
News sentiment **** Negative** **** Positive** **** Neutral**

- <https://247wallst.com/commodities-metals/2021/05/04/credit-suisse-lets-not-split-hairs-over-the-steel-supercycle/>
- <https://www.zacks.com/stock/news/1473611/is-steel-dynamics-stld-outperforming-other-basic-materials-stocks-this-year>
- <https://www.zacks.com/stock/news/1467338/looking-for-basic-materials-stocks-the-zacks-rank-can-help-you-find-winners>
- <https://www.zacks.com/stock/news/1460472/steel-dynamics-stld-soars-53-is-further-upside-left-in-the-stock>
- <https://www.zacks.com/stock/news/1456448/steel-dynamics-stld-just-reclaimed-the-20-day-moving-average>

Daily chart



Weekly chart



Monthly chart



Steel Dynamics, Inc., together with its subsidiaries, operates as a steel producer and metal recycler in the United States. It operates through three segments: Steel Operations, Metals Recycling Operations, and Steel Fabrication Operations. The Steel Operations segment offers hot and cold roll, and coated steel products; structural flange beams and channel sections, flat bars, large unequal leg angles, reinforcing bars, as well as standard strength carbon, intermediate alloy hardness, and premium grade rail products; engineered special-bar-quality products; and merchant-bar-quality products, including channels, angles, flats, merchant rounds, and reinforcing steel bars; and other engineered round steel bars. This segment is also involved in the turning, polishing, straightening, chamfering, threading, precision saw-cutting, and heat treating of bar products; and cutting to length, straightening, hole punching, shot blasting, welding, galvanizing, and coating of specialty merchant bar products. Its products are used in construction, automotive, manufacturing, transportation, heavy and agriculture equipment, and pipe and tube industry sectors. This segment sells its products directly to end-users, steel fabricators, and service centers. The Metals Recycling Operations segment engages in the purchase, process, and resale of ferrous and nonferrous scrap metals into reusable forms and grades. Its ferrous products include heavy melting steel, busheling, bundled scrap, shredded scrap, steel turnings, and cast-iron products; and nonferrous products comprise aluminum, brass, copper, stainless steel, and other nonferrous metals. This segment also provides transportation logistics, marketing, brokerage, and scrap management services. The Steel Fabrication Operations segment produces steel building components, such as steel joists, girders, trusses, and steel deck products for non-residential steel fabricators. The company also exports its products. Steel Dynamics, Inc. was incorporated in 1993 and is headquartered in Fort W





Scan date: 06-05-2021-04_12 | Week number: 18
 Sector: Consumer Cyclical | Industry: Leisure | GicGroup: Retailing
 WebURL: <http://www.poolcorp.com> | IPOdate: 1995-10-12
 EBITDA: 586404992 | Trailing PE: 40.8127 | Revenue TTM (Trailing 12 Months): 4320079872 | Market Capitalization Mln: 17422.4466
 Previous All time high date: 2021-05-04 | Previous ath value (red line): 431.15 Previous close: 441.56
 Total traded /vol*Close/ : 142773127.3

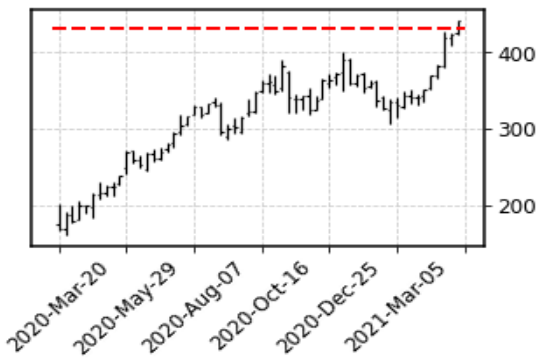
News sentiment **** Negative** **** Positive** **** Neutral**

- <https://www.globenewswire.com/news-release/2021/05/05/2223920/10055/en/Pool-Corporation-Announces-Voting-Results-for-Its-2021-Annual-Meeting-of-Stockholders.html>
- <https://www.zacks.com/commentary/1501149/bull-of-the-day-pool-corp-pool>
- <https://www.globenewswire.com/news-release/2021/05/04/2222897/10055/en/Pool-Corporation-Announces-a-38-Increase-in-Its-Quarterly-Cash-Dividend-and-an-8-Percent-Share-Buyback-Program.html>
- <https://www.fool.com/investing/2021/05/04/why-pool-corps-share-price-surged-22-in-april/>
- <https://www.zacks.com/stock/news/1492954/consumer-spending-rebounds-in-march-5-solid-stocks-to-buy>

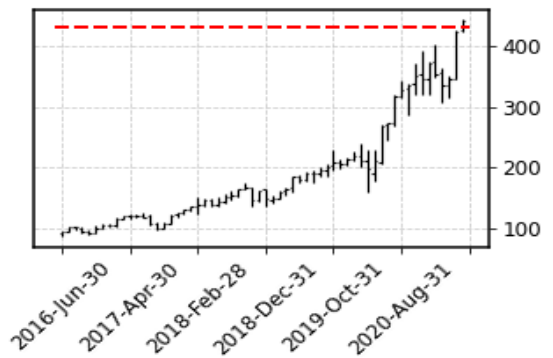
Daily chart



Weekly chart



Monthly chart



Pool Corporation distributes swimming pool supplies, equipment, and related leisure products in the United States and internationally. The company offers maintenance products, including chemicals, supplies, and pool accessories; repair and replacement parts for pool equipment, such as cleaners, filters, heaters, pumps, and lights; fiberglass pools, and hot tubs and packaged pool kits comprising walls, liners, braces, and coping for in-ground and above-ground pools; pool equipment and components for new pool construction and the remodeling of existing pools; and irrigation and related products consisting of irrigation system components, and professional lawn care equipment and supplies. It also provides building materials, such as concrete, plumbing and electrical components, functional and decorative pool surfaces, decking materials, tiles, hardscapes, and natural stones for use in pool installations and remodeling; and commercial products, such as heaters, safety equipment, and commercial pumps and filters. In addition, the company offers discretionary recreational and related outdoor living products that enhance consumers' use and enjoyment of outdoor living spaces, such as hot tubs, grills, and components for outdoor kitchens. It serves swimming pool remodelers and builders; specialty retailers that sell swimming pool supplies; swimming pool repair and service businesses; irrigation construction and landscape maintenance contractors; golf courses; and commercial customers that serve hotels, universities, and community recreational facilities. As of December 31, 2020, the company operated 398 sales centers in North America, Europe, and Australia. Pool Corporation was incorporated in 1993 and is headquartered in Covington, Louisiana.





Scan date: 06-05-2021-04_12 | Week number: 18
 Sector: Financial Services | Industry: Insurance Brokers | GicGroup: Insurance
 WebURL: <http://www.willistowerswatson.com> | IPOdate: 2016-01-05
 EBITDA: 2396000000 | Trailing PE: 24.0567 | Revenue TTM (Trailing 12 Months): 9475999744 | Market Capitalization Mln: 33944.1664
 Previous All time high date: 2021-05-04 | Previous ath value (red line): 262.78 Previous close: 263.18
 Total traded /vol*Close/ : 137468388.5

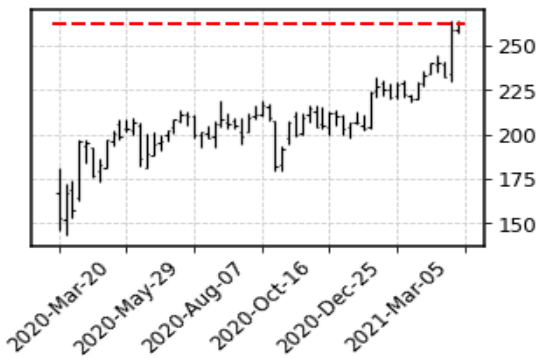
News sentiment **** Negative** **** Positive** **** Neutral**

- <https://www.globenewswire.com/news-release/2021/05/05/2223586/0/en/Willis-Towers-Watson-launches-working-group-to-explore-new-breed-of-investment-managers.html>
- <https://www.globenewswire.com/news-release/2021/05/04/2221945/0/en/Groundbreaking-Climate-Transition-Pathways-CTP-accreditation-established-to-help-build-a-net-zero-future.html>
- <https://seekingalpha.com/article/4422579-willis-towers-watson-public-limited-companys-wltw-ceo-john-haley-on-q1-2021-results-earnings>
- <https://www.zacks.com/stock/news/1473190/willis-towers-wltw-q1-earnings-revenues-beat-up-y-y>
- <https://www.globenewswire.com/news-release/2021/04/29/2219461/0/en/Willis-Towers-Watson-Reports-Strong-First-Quarter-2021-Earnings.html>

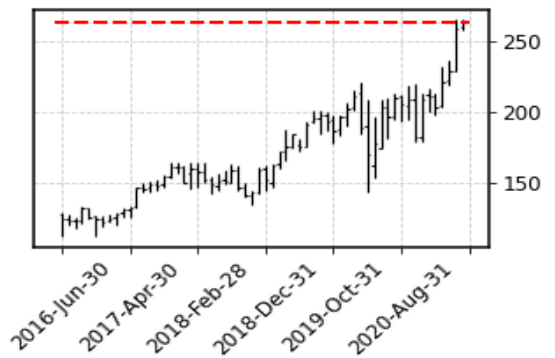
Daily chart



Weekly chart



Monthly chart



Willis Towers Watson Public Limited Company operates as an advisory, broking, and solutions company worldwide. The company's Human Capital and Benefits segment offers actuarial support, plan design, and administrative services for traditional pension and retirement savings plans; plan management consulting, broking, and administration services for health and group benefit programs; and benefits outsourcing services. It also provides advice, data, software, and products to address clients' total rewards and talent issues. Its Corporate Risk and Broking segment offers risk advice, insurance brokerage, and consulting services in the areas of property and casualty, aerospace, construction, and marine. The company's Investment, Risk and Reinsurance segment offers investment consulting and discretionary management services to insurance and reinsurance companies; insurance consulting and technology, risk and capital management, pricing and predictive modeling, financial and regulatory reporting, financial and capital modeling, merger and acquisition, outsourcing, and business management services; wholesale insurance broking services to retail and wholesale brokers; and underwriting and capital management, capital market, and advisory and brokerage services. Its Benefits Delivery and Administration segment provides primary medical and ancillary benefit exchange, and outsourcing services to active employees and retirees in the group and individual markets. This segment delivers healthcare and reimbursement accounts, including health savings accounts, health reimbursement arrangements, flexible spending accounts, and other consumer-directed accounts. The company was formerly known as Willis Group Holdings Public Limited Company and changed its name to Willis Towers Watson Public Limited Company in January 2016. Willis Towers Watson Public Limited Company was founded in 1828 and is based in London, the United Kingdom.





Scan date: 06-05-2021-04_12 | Week number: 18
 Sector: Financial Services | Industry: Financial Data & Stock Exchanges | GicGroup: Diversified Financials
 WebURL: <http://www.nasdaq.com> | IPOdate: 2002-07-01
 EBITDA: 1675500032 | Trailing PE: 26.5935 | Revenue TTM (Trailing 12 Months): 5926000128 | Market Capitalization Mln: 26840.3569
 Previous All time high date: 2021-05-04 | Previous ath value (red line): 163.54 Previous close: 163.55
 Total traded /vol*Close/ : 117636445.0

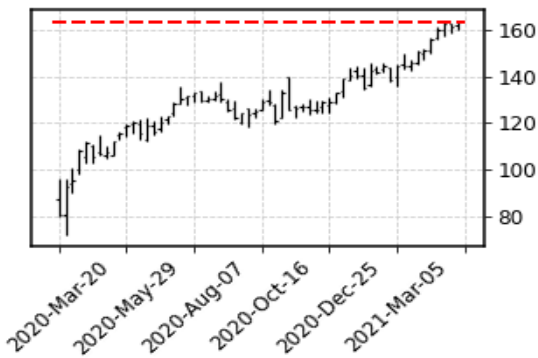
News sentiment ** Negative ** Positive ** Neutral

- <https://www.investors.com/ibd-data-stories/nasdaq-joins-rank-of-stocks-with-95-plus-composite-rating/>
- <https://seekingalpha.com/article/4424277-the-exorbitant-national-market-system-speed-game>
- <https://www.globenewswire.com/news-release/2021/05/04/2222804/6948/en/Nasdaq-April-2021-Volumes.html>
- <https://seekingalpha.com/article/4422094-dividend-increases-april-17minus-23-2021>
- <https://www.globenewswire.com/news-release/2021/04/26/2217184/6948/en/Nasdaq-Announces-Mid-Month-Open-Short-Interest-Positions-in-Nasdaq-Stocks-as->

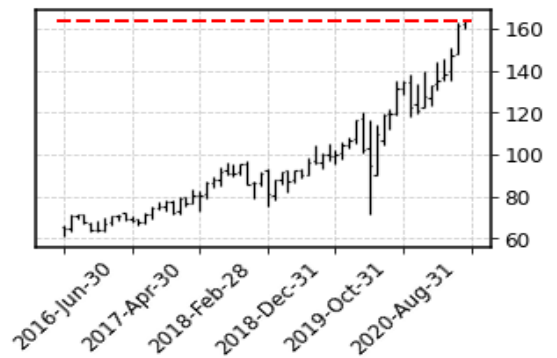
Daily chart



Weekly chart



Monthly chart



Nasdaq, Inc. operates as a technology company that serves capital markets and other industries worldwide. It operates through four segments: Market Services, Corporate Platforms, Investment Intelligence, and Market Technology. The Market Services segment includes equity derivative trading and clearing, cash equity trading, fixed income and commodities trading and clearing, and trade management service businesses. This segment operates various exchanges and other marketplace facilities across various asset classes, which include derivatives, commodities, cash equity, debt, structured products, and exchange traded products; and provides broker, clearing, settlement, and central depository services. The Corporate Platforms segment includes listing; investor relation; and environmental, social, and governance services businesses that deliver critical capital market and governance solutions to public and private companies. As of December 31, 2020, it had 3,392 companies listed securities on The Nasdaq Stock Market, including 1,476 listings on The Nasdaq Global Select Market; 907 on The Nasdaq Global Market; and 1,009 on The Nasdaq Capital Market. The Investment Intelligence segment provides market data, index, and analytics to institutional and retail investors. The Market Technology segment offers technology solutions for trading, clearing, market surveillance, settlement, depository, and information dissemination to markets. It also provides Nasdaq Trade Surveillance solution, a managed service designed for brokers and other market participants; Nasdaq Risk, a suite of products that offer a real-time and multi-tiered risk solutions; Nasdaq Automated Investigator, an anti-money laundering tool; and anti-financial crime management solutions. The company was formerly known as The NASDAQ OMX Group, Inc. and changed its name to Nasdaq, Inc. in September 2015. Nasdaq, Inc. was founded in 1971 and is headquartered in New York, New York.



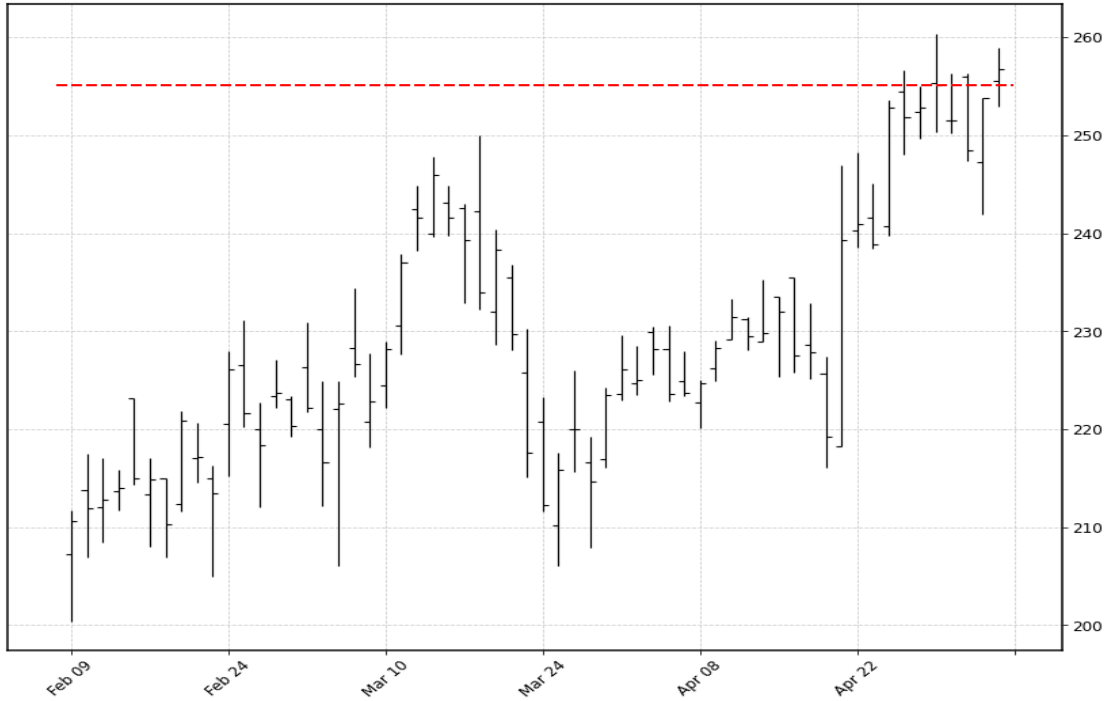


Scan date: 06-05-2021-04_12 | Week number: 18
 Sector: Financial Services | Industry: Banks-Regional | GicGroup: Banks
 WebURL: <http://www.signatureny.com> | IPOdate: 2004-03-23
 EBITDA: NA | Trailing PE: 22.65 | Revenue TTM (Trailing 12 Months): 1458962048 | Market Capitalization Mln: 14795.7699
 Previous All time high date: 2021-04-29 | Previous ath value (red line): 255.09 Previous close: 256.76
 Total traded /vol*Close/ : 114971736.0

News sentiment **** Negative** **** Positive** **** Neutral**

- <https://www.fool.com/investing/2021/05/02/2-bank-growth-stocks-to-buy/>
- <https://www.zacks.com/stock/news/1442058/tcf-vs-sbny-which-stock-should-value-investors-buy-now>
- <https://www.businesswire.com/news/home/20210423005123/en/Signature-Bank-Announces-Both-Executive-and-Senior-Management-Appointments/>
- <https://www.gurufocus.com/news/1404515/steven-romick-drives-out-porsche-holding-in-1st-quarter>
- <https://www.zacks.com/stock/news/1435445/signature-bank-sbny-up-91-as-q1-earnings-beat-estimates>

Daily chart



Weekly chart



Monthly chart



Signature Bank commercial banking products and services. It accepts various deposit products, including commercial checking accounts, money market accounts, escrow deposit accounts, cash concentration accounts, interest-bearing and non-interest-bearing checking accounts, certificates of deposit, time deposits, and other cash management products. The company also offers loan products comprising commercial and industrial loans; real estate loans; temporary financing for commercial and residential properties; letters of credit; and personal lines of credit and loans to acquire personal assets, as well as asset-based lending, pay check protection loans, main street lending program loans, and credit card accounts. In addition, it provides investment, brokerage, and asset management products and services; retirement products, such as individual retirement accounts and administrative services for retirement vehicles, which include pension, profit sharing, and 401(k) plans to its clients, as well as business retirement accounts; and equipment, transportation, taxi medallion, commercial marine, and municipal and national franchise financing services. Further, the company offers wealth management services to high net worth personal clients; and a range of individual and group insurance products that comprise health, life, disability, and long-term care insurance products as an agent. Additionally, it purchases, securitizes, and sells guaranteed portions of the U.S. small business administration loans. As of December 31, 2020, the company operated 36 private client offices located in the New York metropolitan area, including Connecticut, and in California and North Carolina. Signature Bank was incorporated in 2000 and is headquartered in New York, New York.





Scan date: 06-05-2021-04_12 | Week number: 18
 Sector: NA | Industry: NA | GicGroup: NA
 WebURL: NA | IPOdate: NA
 EBITDA: NA | Trailing PE: NA | Revenue TTM (Trailing 12 Months): NA | Market Capitalization Mln: NA
 Previous All time high date: 2021-05-04 | Previous ath value (red line): 52.16 Previous close: 52.27
 Total traded /vol*Close/ : 107572809.9

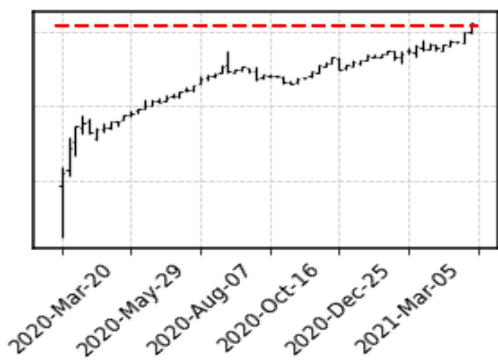
News sentiment ** Negative ** Positive ** Neutral

- <https://www.etftrends.com/fixed-income-channel/warren-buffett-warns-of-substantial-inflation/>
- <https://seekingalpha.com/article/4421172-vtip-etf-momentum-strategies-for-bond-portfolio>
- <https://investorplace.com/2021/04/the-7-best-etfs-and-mutual-funds-to-prepare-for-higher-rates/>
- <https://www.zacks.com/stock/news/1261701/tips-etfs-to-buy-on-growing-inflation>
- <https://www.zacks.com/stock/news/1177239/tips-etfs-to-buy-for-2021-on-inflation-trade>

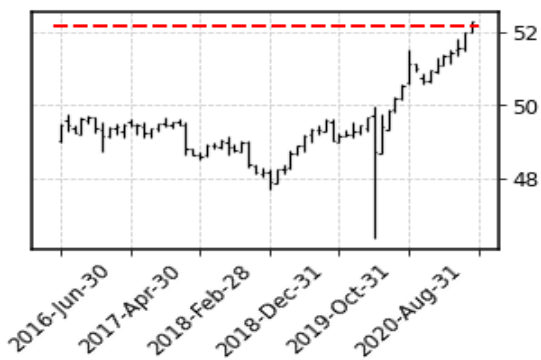
Daily chart



Weekly chart



Monthly chart



The investment seeks to track the performance of the Bloomberg Barclays U.S. Treasury Inflation-Protected Securities (TIPS) 0-5 Year Index. The index is a market-capitalization-weighted index that includes all inflation-protected public obligations issued by the U.S. Treasury with remaining maturities of less than 5 years. The manager attempts to replicate the target index by investing all, or substantially all, of its assets in the securities that make up the index, holding each security in approximately the same proportion as its weighting in the index.





Scan date: 06-05-2021-04_12 | Week number: 18
 Sector: NA | Industry: NA | GicGroup: NA
 WebURL: NA | IPOdate: NA
 EBITDA: NA | Trailing PE: NA | Revenue TTM (Trailing 12 Months): NA | Market Capitalization Mln: NA
 Previous All time high date: 2021-05-04 | Previous ath value (red line): 66.7 Previous close: 67.4
 Total traded /vol*Close/ : 102675205.4

News sentiment **** Negative** **** Positive** **** Neutral**

- <https://www.marketwatch.com/story/financial-sector-etfs-pop-as-yields-jump-2021-04-29>
- <https://seekingalpha.com/article/4421885-us-banks-q1-2021-earnings-beat-street>
- <https://www.zacks.com/stock/news/1462555/winning-sector-etfs-on-bidens-first-100-days-of-ruling>
- <https://www.etftrends.com/equity-etf-channel/bank-etfs-are-having-a-phenomenal-earnings-season/>
- <https://www.zacks.com/stock/news/1437120/banking-earnings-upbeat-time-to-buy-financial-etfs-on-value>

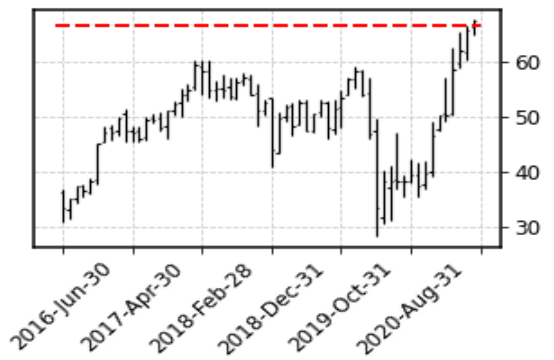
Daily chart



Weekly chart



Monthly chart



The investment seeks to track the investment results (before fees and expenses) of the KBW Nasdaq Bank Index (the underlying index). The fund generally will invest at least 90% of its total assets in the securities that comprise the underlying index. The underlying index is a modified-market capitalization-weighted index of companies primarily engaged in U.S. banking activities, as determined by the index provider. The underlying index is designed to track the performance of large national U.S. money centers, regional banks, and thrift institutions that are publicly traded in the U.S. The fund is non-diversified.





Scan date: 06-05-2021-04_12 | Week number: 18
 Sector: Consumer Cyclical | Industry: Auto Parts | GicGroup: Retailing
 WebURL: <http://www.lkqcorp.com> | IPOdate: 2003-10-03
 EBITDA: 1479896960 | Trailing PE: 19.4184 | Revenue TTM (Trailing 12 Months): 11798680576 | Market Capitalization Mln: 14637.7308
 Previous All time high date: 2021-05-04 | Previous ath value (red line): 48.175 Previous close: 48.64
 Total traded /vol*Close/ : 98517255.7

News sentiment **** Negative** **** Positive** **** Neutral**

- <https://seekingalpha.com/article/4422548-lkq-corporation-lkq-ceo-nick-zarcone-on-q1-2021-results-earnings-call-transcript>
- <https://www.zacks.com/stock/news/1473241/lkq-corp-lkq-beats-on-q1-earnings-sales-raises-21-view>
- <https://www.benzinga.com/news/earnings/21/04/20858547/lkq-q1-earnings-insights>
- <https://www.globenewswire.com/news-release/2021/04/29/2219454/8053/en/LKQ-Corporation-Announces-Results-for-First-Quarter-2021.html>
- <https://www.zacks.com/stock/news/1467267/should-you-buy-lkq-corporation-lkq-ahead-of-earnings>

Daily chart



Weekly chart



Monthly chart



LKQ Corporation distributes replacement parts, components, and systems used in the repair and maintenance of vehicles. It operates through three segments: North America, Europe, and Specialty. The company distributes bumper covers, automotive body panels, and lights, as well as automotive glass products, such as windshields; salvage products, including mechanical and collision parts comprising engines; transmissions; door assemblies; sheet metal products, such as trunk lids, fenders, and hoods; lights and bumper assemblies; scrap metal and other materials to metals recyclers; and brake pads, discs and sensors, clutches, steering and suspension products, filters, and oil and automotive fluids, as well as electrical products, including spark plugs and batteries. It also operates self-service retail operations under the LKQ Pick Your Part name; and designs, manufactures, and markets vehicle equipment and accessories. In addition, the company distributes recreational vehicle appliances and air conditioners, towing hitches, truck bed covers, vehicle protection products, cargo management products, wheels, tires, and suspension products. It serves collision and mechanical repair shops, and new and used car dealerships, as well as retail customers. The company operates in the United States, Canada, the United Kingdom, Germany, Belgium, the Netherlands, Luxembourg, Italy, Poland, Slovakia, Austria, Taiwan, and various other European countries. LKQ Corporation was incorporated in 1998 and is headquartered in Chicago, Illinois.



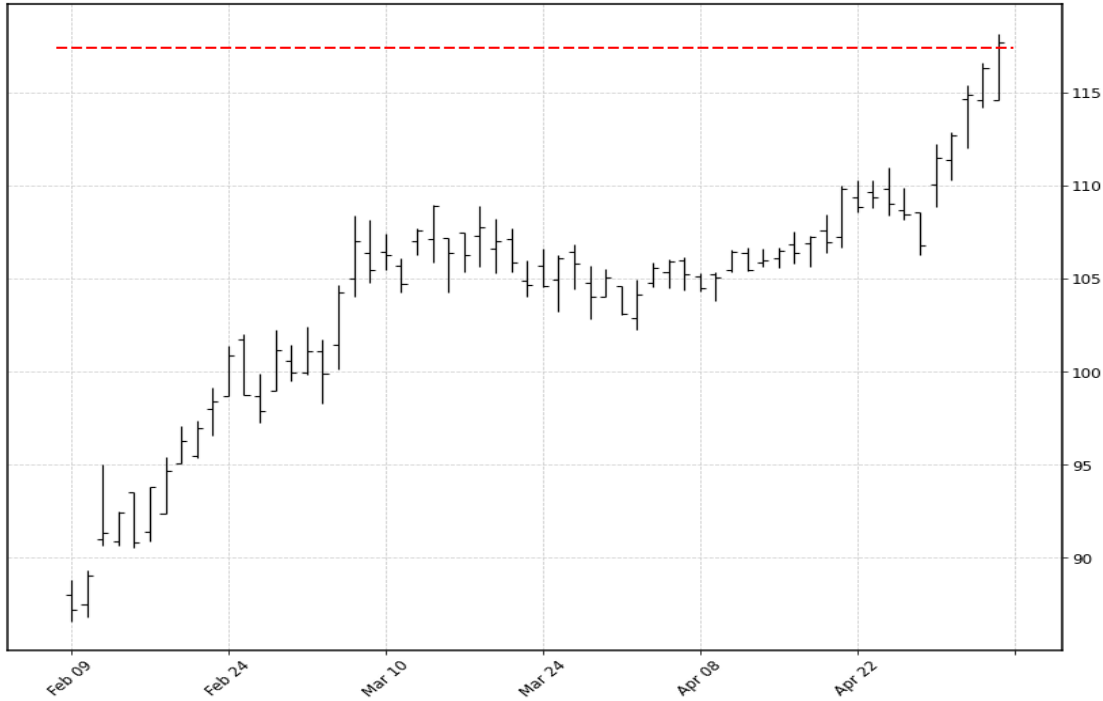


Scan date: 06-05-2021-04_12 | Week number: 18
 Sector: Financial Services | Industry: Insurance-Property & Casualty | GicGroup: Insurance
 WebURL: <http://www.cinfin.com> | IPOdate: 1990-03-26
 EBITDA: 3979000064 | Trailing PE: 6.2538 | Revenue TTM (Trailing 12 Months): 9861999616 | Market Capitalization Mln: 18994.8662
 Previous All time high date: 2019-10-04 | Previous ath value (red line): 117.41 Previous close: 117.68
 Total traded /vol*Close/ : 93823086.6

News sentiment **** Negative** **** Positive** **** Neutral**

- <https://seekingalpha.com/article/4422728-cincinnati-financial-corporation-cinf-ceo-steven-johnston-on-q1-2021-results-earnings-call>
- <https://www.zacks.com/stock/news/1472578/cincinnati-financial-cinf-q1-earnings-revenues-beat>
- <https://www.prnewswire.com/news-releases/cincinnati-financial-reports-first-quarter-2021-results-301279431.html>
- <https://www.benzinga.com/news/earnings/21/04/20814423/cincinnati-financial-earnings-preview>
- <https://www.zacks.com/stock/news/1441830/what-awaits-cincinnati-financial-cinf-this-earnings-season>

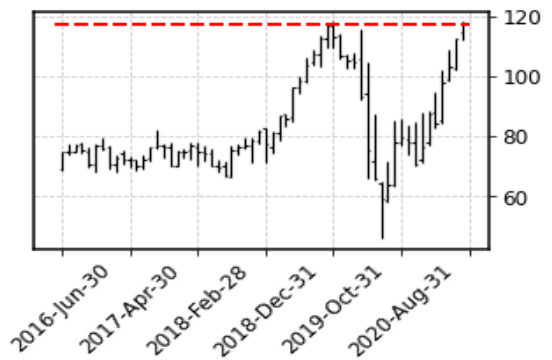
Daily chart



Weekly chart



Monthly chart



Cincinnati Financial Corporation, together with its subsidiary, provides property casualty insurance products in the United States. The company operates through five segments: Commercial Lines Insurance, Personal Lines Insurance, Excess and Surplus Lines Insurance, Life Insurance, and Investments. The Commercial Lines Insurance segment offers coverage for commercial casualty, commercial property, commercial auto, and workers' compensation. It also provides director and officer liability insurance, contract and commercial surety bonds, and fidelity bonds; and machinery and equipment coverage. The Personal Lines Insurance segment offers personal auto insurance; homeowner insurance; and dwelling fire, inland marine, personal umbrella liability, and watercraft coverages to individuals. The Excess and Surplus Lines Insurance segment offers commercial casualty insurance that covers businesses for third-party liability from accidents occurring on their premises or arising out of their operations, such as injuries sustained from products; and commercial property insurance, which insures buildings, inventory, equipment, and business income from loss or damage due to various causes, such as fire, wind, hail, water, theft, and vandalism. The Life Insurance segment provides term life insurance products; universal life insurance products; worksite products, such as term life; and whole life insurance products, as well as markets deferred and immediate annuities. The Investments segment invests in fixed-maturity investments, including taxable and tax-exempt bonds, and redeemable preferred stocks; and equity investments comprising common and nonredeemable preferred stocks. The company also offers commercial leasing and financing services; and insurance brokerage services. Cincinnati Financial Corporation was founded in 1950 and is headquartered in Fairfield, Ohio.



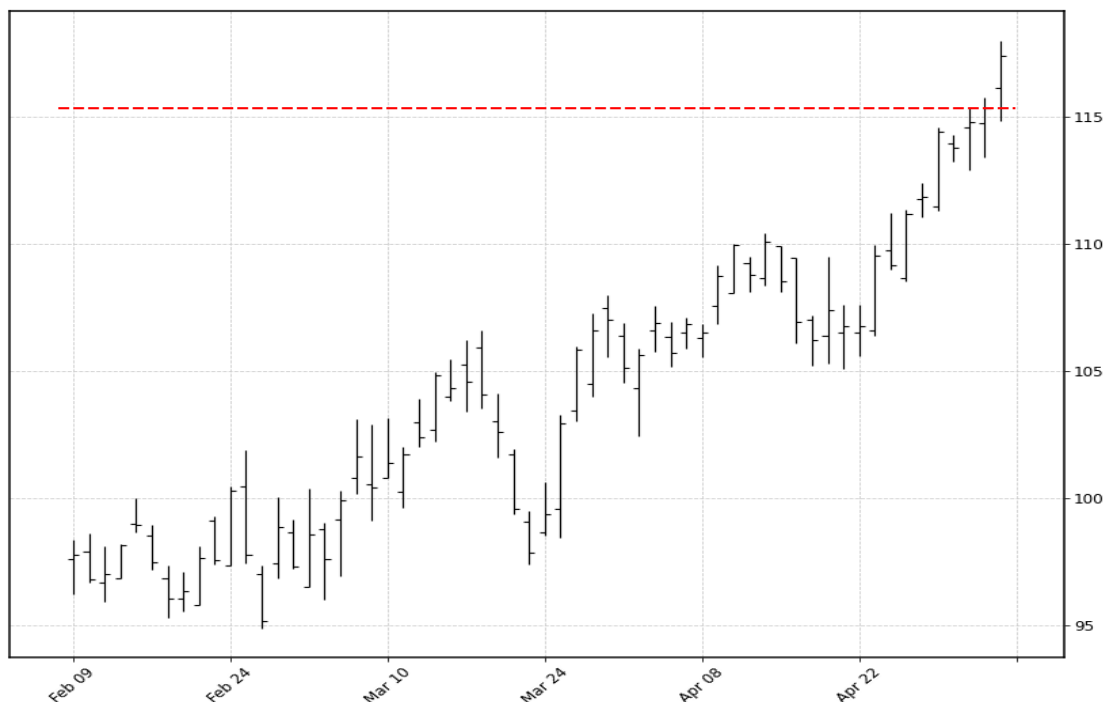


Scan date: 06-05-2021-04_12 | Week number: 18
 Sector: Financial Services | Industry: Asset Management | GicGroup: Diversified Financials
 WebURL: <http://www.northerntrust.com> | IPOdate: 1990-03-26
 EBITDA: NA | Trailing PE: 20.895 | Revenue TTM (Trailing 12 Months): 6062499840 | Market Capitalization Mln: 24394.0065
 Previous All time high date: 2021-05-04 | Previous ath value (red line): 115.32 Previous close: 117.42
 Total traded /vol*Close/ : 90895996.2

News sentiment ** Negative ** Positive ** Neutral

- <https://www.youtube.com/watch?v=S7Ldst34nz0>
- <https://www.businesswire.com/news/home/20210504005911/en/Northern-Trust-Launches-Omnium-Event-Manager-Platform/>
- <https://www.businesswire.com/news/home/20210503005503/en/Northern-Trust-Universe-Data-Vaccine-Progress-Sets-Up-Positive-First-Quarter-for-U.S.-Institutional-Asset-Management/>
- <https://www.businesswire.com/news/home/20210503005498/en/Northern-Trust-Appoints-Managing-Director-for-Miami-Private-Client-Advisory-Team/>
- <https://www.businesswire.com/news/home/20210427005803/en/Northern-Trust-Pension-Universe-Data-Rising-Bond-Yields-Impact-Canadian-Pension-Plan-Retirement-Assets/>

Daily chart



Weekly chart



Monthly chart



Northern Trust Corporation, a financial holding company, provides wealth management, asset servicing, asset management, and banking solutions for corporations, institutions, families, and individuals worldwide. It operates in two segments, Corporate & Institutional Services (C&IS) and Wealth Management. The C&IS segment offers asset servicing and related services, including custody, fund administration, investment operations outsourcing, investment management, investment risk and analytical services, employee benefit services, securities lending, foreign exchange, treasury management, brokerage services, transition management services, banking, and cash management services. This segment serves corporate and public retirement funds, foundations, endowments, fund managers, insurance companies, sovereign wealth funds, and other institutional investors. The Wealth Management segment offers trust, investment management, custody, and philanthropic; financial consulting; guardianship and estate administration; family business consulting; family financial education; brokerage services; and private and business banking services. This segment serves high-net-worth individuals and families, business owners, executives, professionals, retirees, and established privately-held businesses. The company also provides asset management services, such as active and passive equity; active and passive fixed income; cash management; alternative asset classes comprising private equity and hedge funds of funds; and multi-manager advisory services and products through separately managed accounts, bank common and collective funds, registered investment companies, exchange traded funds, non-U.S. collective investment funds, and unregistered private investment funds. In addition, it offers overlay and other risk management services. The company was founded in 1889 and is headquartered in Chicago, Illinois.



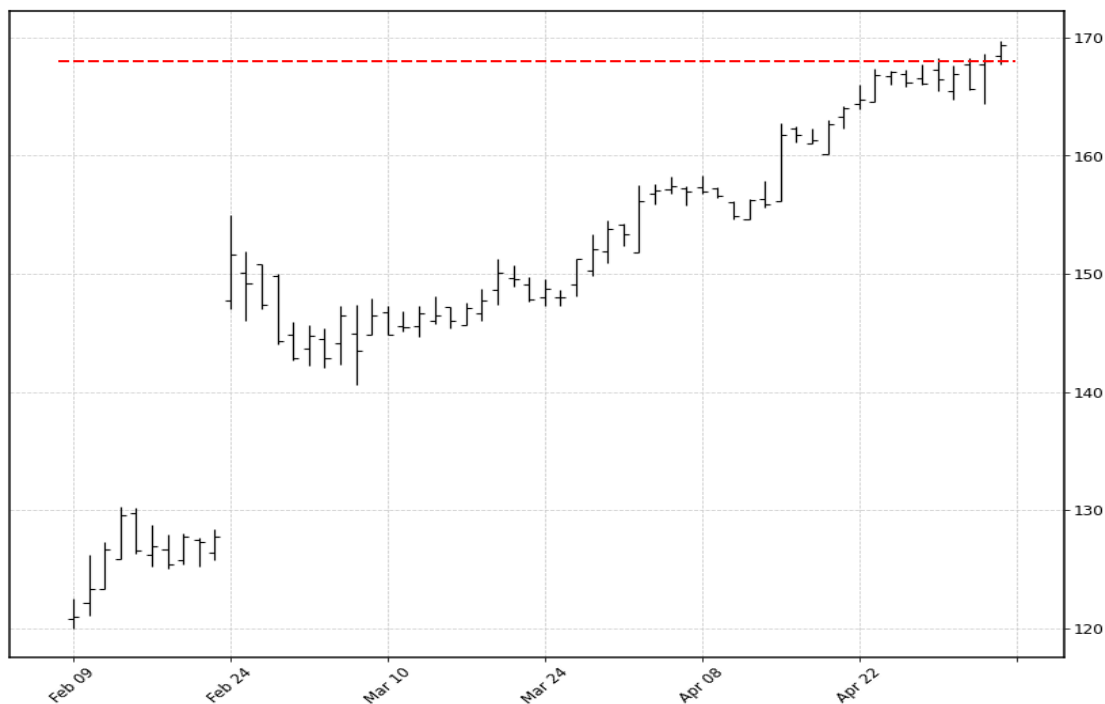


Scan date: 06-05-2021-04_12 | Week number: 18
 Sector: Healthcare | Industry: Diagnostics & Research | GicGroup: Pharmaceuticals, Biotechnology & Life Sciences
 WebURL: <http://prahs.com> | IPOdate: 2014-11-13
 EBITDA: 435158016 | Trailing PE: 51.7982 | Revenue TTM (Trailing 12 Months): 3333432064 | Market Capitalization Mln: 10975.0456
 Previous All time high date: 2021-05-04 | Previous ath value (red line): 168.04 Previous close: 169.38
 Total traded /vol*Close/ : 72327800.7

News sentiment **** Negative** **** Positive** **** Neutral**

- <https://www.zacks.com/stock/news/1500105/prah-health-prah-stock-down-03-despite-q1-earnings-beat>
- <https://www.businesswire.com/news/home/20210429005976/en/PRA-HEALTH-SCIENCES-INVESTOR-ALERT-by-the-Former-Attorney-General-of-Louisiana-Ka>
- <https://www.zacks.com/stock/news/1469375/prah-health-sciences-prah-q1-earnings-and-revenues-beat-estimates>
- <https://www.benzinga.com/news/earnings/21/04/20848119/recap-prah-health-sciences-q1-earnings>
- <https://www.globenewswire.com/news-release/2021/04/28/2219013/34591/en/PRA-Health-Sciences-Inc-Reports-First-Quarter-2021-Results.html>

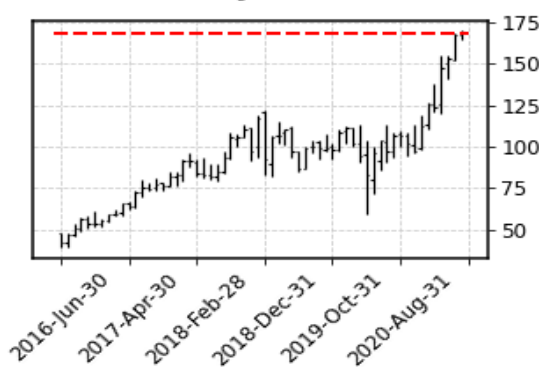
Daily chart



Weekly chart



Monthly chart



PRA Health Sciences, Inc., a contract research organization, provides outsourced clinical development and data solution services to the biotechnology and pharmaceutical industries worldwide. It operates in two segments, Clinical Research and Data Solutions. The Clinical Research segment offers product registration services, including clinical trial management, project management, regulatory affairs, therapeutic expertise, clinical operations, data and programming, safety and risk management, biostatistics and medical writing, quality assurance, and late phase services. It also provides strategic solutions, such as embedded, functional services provider, staff augmentation, and custom-built development solutions, as well as commercialization services; and early development services for Phase I and Phase IIa studies, as well as bioanalytical analysis. The Data Solutions segment offers data, analytics, technology, and consulting solutions to the life sciences market. Its services include market intelligence services, such as targeting and compensation, and pharmaceutical audit suite services; consulting and services comprising brand analytics, managed markets, commercial effectiveness, and scientific studies/clinical hubs; and technology-enabled products and services that allow clients to access and analyze Symphony Health and integrated third-party data. PRA Health Sciences, Inc. conducts clinical trials in the areas of pharmaceutical development, including oncology, immunology, central nervous system, inflammation, respiratory, cardiometabolic, and infectious diseases. The company was formerly known as PRA Global Holdings, Inc. and changed its name to PRA Health Sciences, Inc. in July 2014. PRA Health Sciences, Inc. was founded in 1976 and is headquartered in Raleigh, North Carolina.





Scan date: 06-05-2021-04_12 | Week number: 18
 Sector: Financial Services | Industry: Capital Markets | GicGroup: Diversified Financials
 WebURL: <http://www.tradeweb.com> | IPOdate: 2019-04-04
 EBITDA: NA | Trailing PE: 84.8554 | Revenue TTM (Trailing 12 Months): 930643008 | Market Capitalization Mln: 19074.9614
 Previous All time high date: 2021-05-03 | Previous ath value (red line): 81.32 Previous close: 82.14
 Total traded /vol*Close/ : 67812894.8

News sentiment ** Negative ** Positive ** Neutral

- <https://www.zacks.com/stock/news/1504927/jmp-or-tw-which-is-the-better-value-stock-right-now>
- <https://www.businesswire.com/news/home/20210505005554/en/Tradeweb-Reports-Volume-of-19.3-Trillion-in-April/>
- <https://seekingalpha.com/article/4423655-tradeweb-markets-inc-tw-ceo-lee-olesky-on-q1-2021-results-earnings-call-transcript>
- <https://www.zacks.com/stock/news/1472720/tradeweb-markets-tw-meets-q1-earnings-estimates>
- <https://www.businesswire.com/news/home/20210429005194/en/Tradeweb-Reports-First-Quarter-2021-Financial-Results/>

Daily chart



Weekly chart



Monthly chart



Tradeweb Markets Inc. builds and operates electronic marketplaces in the Americas, Europe, the Middle East, Africa, Asia Pacific, and internationally. The company's marketplaces facilitate trading in a range of asset classes, including rates, credit, money markets, and equities. It offers pre-trade data and analytics, trade execution, and trade processing, as well as post-trade data, analytics, and reporting services. The company provides flexible order and trading systems to institutional investors in 40 markets across 25 currencies. It also offers a range of electronic, voice, and hybrid platforms to approximately 300 dealers and financial institutions on electronic or hybrid markets with Dealerweb platform; and trading solutions for financial advisory companies and traders with Tradeweb Direct platform. The company serves a network of approximately 2,500 clients in the institutional, wholesale, and retail client sectors. Its customers include asset managers, hedge funds, insurance companies, central banks, banks and dealers, proprietary trading firms, retail brokerage and financial advisory firms, and regional dealers. The company was founded in 1996 and is headquartered in New York, New York. Tradeweb Markets Inc. is a subsidiary of BCP York Holdings.





Scan date: 06-05-2021-04_12 | Week number: 18
 Sector: NA | Industry: NA | GicGroup: NA
 WebURL: NA | IPOdate: NA
 EBITDA: NA | Trailing PE: NA | Revenue TTM (Trailing 12 Months): NA | Market Capitalization Mln: NA
 Previous All time high date: 2021-05-04 | Previous ath value (red line): 120.08 Previous close: 120.5
 Total traded /vol*Close/ : 58839427.0

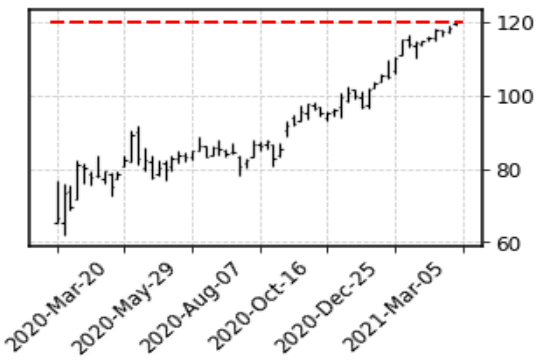
News sentiment ** Negative ** Positive ** Neutral

- <https://www.investors.com/etfs-and-funds/etfs/dividend-etfs/>
- <https://www.zacks.com/stock/news/1431918/dividend-aristocrats-etfs-to-tap-amid-soaring-covid-19-cases>
- <https://www.forbes.com/sites/qai/2021/04/08/diversify-your-portfolio-and-hedge-your-bets-with-aprils-top-etfs/>
- <https://www.ettrends.com/retirement-income-channel/practical-idea-for-accessing-big-dividends/>
- <https://www.zacks.com/stock/news/1313575/a-guide-to-10-most-popular-dividend-etfs>

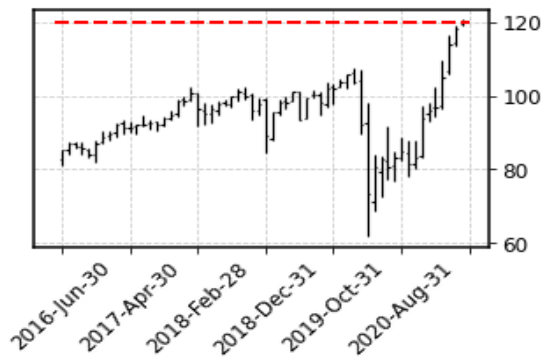
Daily chart



Weekly chart



Monthly chart



The investment seeks to track the investment results of the Dow Jones U.S. Select Dividend Index composed of relatively high dividend paying U.S. equities. The fund generally invests at least 90% of its assets in securities of the underlying index and in depositary receipts representing securities of the underlying index. The underlying index measures the performance of the U.S.'s leading stocks by dividend yield.





Scan date: 06-05-2021-04_12 | Week number: 18
 Sector: Financial Services | Industry: Asset Management | GicGroup: Diversified Financials
 WebURL: <http://www.carlyle.com> | IPOdate: 2012-05-03
 EBITDA: 2728699904 | Trailing PE: 8.7216 | Revenue TTM (Trailing 12 Months): 6117499904 | Market Capitalization Mln: 15650.8518
 Previous All time high date: 2021-05-03 | Previous ath value (red line): 43.38 Previous close: 44.14
 Total traded /vol*Close/ : 48785602.6

News sentiment **** Negative** **** Positive** **** Neutral**

- <https://www.globenewswire.com/news-release/2021/05/04/2222921/31330/en/Carlyle-Prices-400-Million-Subordinated-Notes-Offering.html>
- <https://www.businesswire.com/news/home/20210429006258/en/KKR-to-Sell-The-Bountiful-Company-to-Nestl%C3%A9-for-5.75-Billion/>
- <https://seekingalpha.com/article/4422737-carlyle-group-inc-cg-ceo-kewsong-lee-on-q1-2021-results-earnings-call-transcript>
- <https://www.prnewswire.com/news-releases/the-carlyle-group-to-acquire-rapidly-growing-life-sciences-tools-company-unchained-labs-301276661.html>
- <https://www.cnn.com/2021/04/13/carlyle-group-bets-on-clean-cosmetics-in-beautycounter-deal.html>

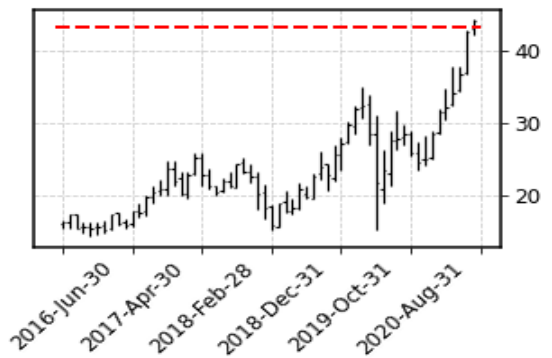
Daily chart



Weekly chart



Monthly chart



The Carlyle Group Inc. is an investment firm specializing in direct and fund of fund investments. Within direct investments, it specializes in management-led/ Leveraged buyouts, privatizations, divestitures, strategic minority equity investments, structured credit, global distressed and corporate opportunities, small and middle market, equity private placements, consolidations and buildups, senior debt, mezzanine and leveraged finance, and venture and growth capital financings, seed/startup, early venture, emerging growth, turnaround, mid venture, late venture, PIPES. The firm invests across four segments which include Corporate Private Equity, Real Assets, Global Market Strategies, and Solutions. The firm typically invests in industrial, agribusiness, ecological sector, fintech, airports, parking, Plastics, Rubber, diversified natural resources, minerals, farming, aerospace, defense, automotive, consumer, retail, industrial, infrastructure, energy, power, healthcare, software, software enabled services, semiconductors, communications infrastructure, financial technology, utilities, gaming, systems and related supply chain, electronic systems, systems, oil and gas, processing facilities, power generation assets, technology, systems, real estate, financial services, transportation, business services, telecommunications, media, and logistics sectors. Within the industrial sector, the firm invests in manufacturing, building products, packaging, chemicals, metals and mining, forestry and paper products, and industrial consumables and services. In consumer and retail sectors, it invests in food and beverage, retail, restaurants, consumer products, domestic consumption, consumer services, personal care products, direct marketing, and education. Within aerospace, defense, business services, and government services sectors, it seeks to invest in defense electronics, manufacturing and services, government contracting and services, information technology, distribution companies. In telecommunication and media sectors, it i





Scan date: 06-05-2021-04_12 | Week number: 18
 Sector: Industrials | Industry: Trucking | GicGroup: Transportation
 WebURL: <http://www.arcb.com> | IPOdate: 1992-05-13
 EBITDA: 213276000 | Trailing PE: 31.2584 | Revenue TTM (Trailing 12 Months): 2940163072 | Market Capitalization Mln: 2135.3638
 Previous All time high date: 2021-05-04 | Previous ath value (red line): 79.26 Previous close: 85.07
 Total traded /vol*Close/ : 34060326.6

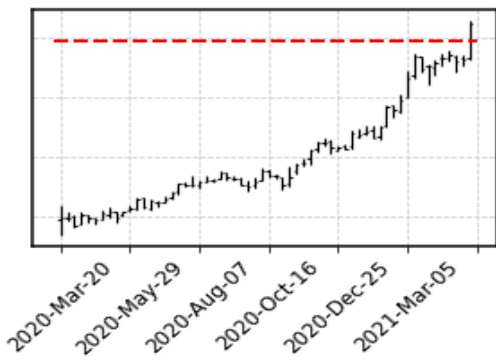
News sentiment **** Negative** **** Positive** **** Neutral**

- <https://www.zacks.com/stock/news/1504230/arcbest-arcb-hits-fresh-high-is-there-still-room-to-run>
- <https://www.investors.com/ibd-data-stories/top-rated-stocks-arcbest-sees-composite-rating-climb-to-98/>
- <https://seekingalpha.com/article/4424226-arcbest-corporations-arcb-ceo-judy-mcreynolds-on-q1-2021-results-earnings-call-transcript>
- <https://www.freightwaves.com/news/arcbests-capital-spending-plan-signals-confidence-in-prolonged-freight-cycle>
- <https://www.freightwaves.com/news/arcbest-blows-past-first-quarter-expectations>

Daily chart



Weekly chart



Monthly chart



ArcBest Corporation provides freight transportation and integrated logistics services. It operates through three segments: Asset-Based, ArcBest, and FleetNet. The Asset-Based segment transports general commodities, such as food, textiles, apparel, furniture, appliances, chemicals, nonbulk petroleum products, rubber, plastics, metal and metal products, wood, glass, automotive parts, machinery, and miscellaneous manufactured products through less-than-truckload services. It also offers motor carrier freight transportation services to customers in Mexico through arrangements with trucking companies. The ArcBest segment provides expedite freight transportation services to commercial and government customers; premium logistics services, such as deployment of specialized equipment to meet linehaul requirements; and international freight transportation with air, ocean, and ground services. It also offers third-party transportation brokerage services by sourcing various capacity solutions, including dry van over the road and intermodal, temperature-controlled and refrigerated, flatbed, intermodal or container shipping, and specialized equipment; full-container and less-than-container load ocean transportation services; warehousing and distribution services; managed transportation services; and moving services to 'do-it-yourself' consumer, as well as provides final mile, time critical, product launch, warehousing, retail logistics, supply chain optimization, and trade show shipping services. The FleetNet segment provides roadside repair solutions and vehicle maintenance management services for commercial and private fleets through a network of third-party service providers. The company was formerly known as Arkansas Best Corporation and changed its name to ArcBest Corporation in May 2014. ArcBest Corporation was founded in 1923 and is headquartered in Fort Smith, Arkansas.



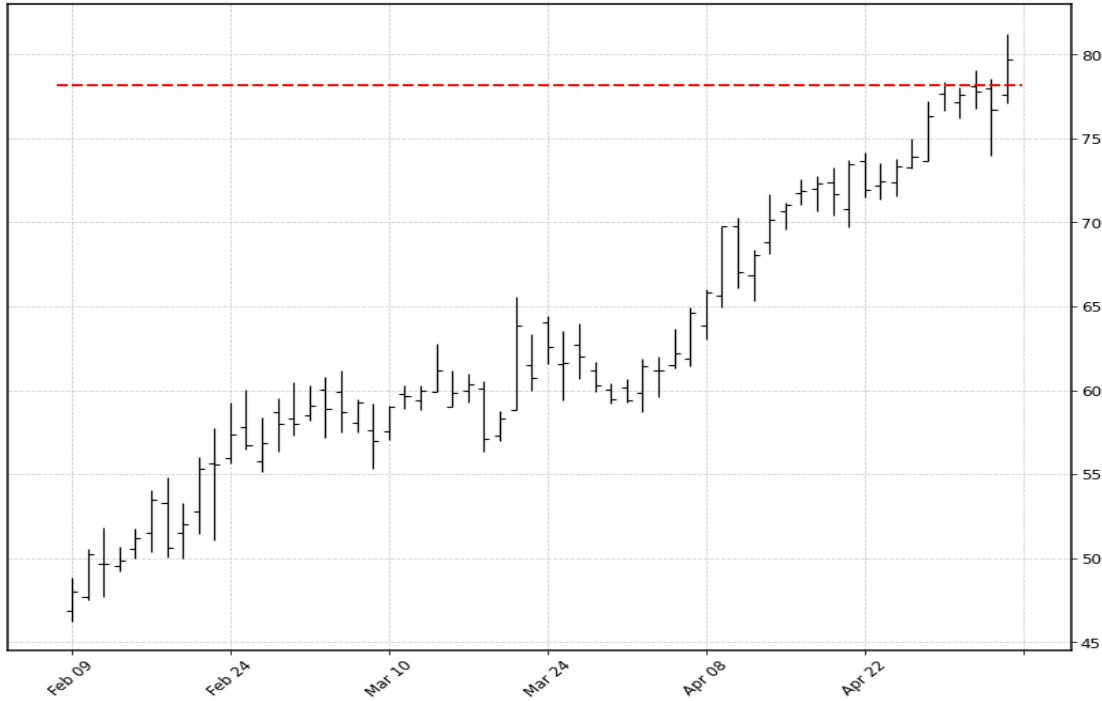


Scan date: 06-05-2021-04_12 | Week number: 18
 Sector: Energy | Industry: Oil & Gas E&P | GicGroup: Energy
 WebURL: <http://www.oasispetroleum.com> | IPOdate: 2010-06-17
 EBITDA: 559441024 | Trailing PE: 0 | Revenue TTM (Trailing 12 Months): 1031956992 | Market Capitalization Mln: 1632.5421
 Previous All time high date: 2021-04-29 | Previous ath value (red line): 78.14 Previous close: 79.68
 Total traded /vol*Close/ : 33866709.1

News sentiment **** Negative** **** Positive** **** Neutral**

- <https://www.prnewswire.com/news-releases/oasis-petroleum-inc-announces-strategic-acquisition-of-williston-basin-assets-reports-first-quarter-2021-results-decl>
- <https://www.prnewswire.com/news-releases/oasis-petroleum-schedules-first-quarter-2021-conference-call-for-may-6-2021-301276144.html>
- <https://investorplace.com/2021/04/7-oil-stocks-to-buy-as-production-ramps-up/>
- <https://www.zacks.com/stock/news/1394622/us-shale-oil-output-rising-permian-to-hit-1-year-high>
- <https://www.prnewswire.com/news-releases/oasis-petroleum-appoints-daniel-e-brown-as-chief-executive-officer-and-board-member-301268525.html>

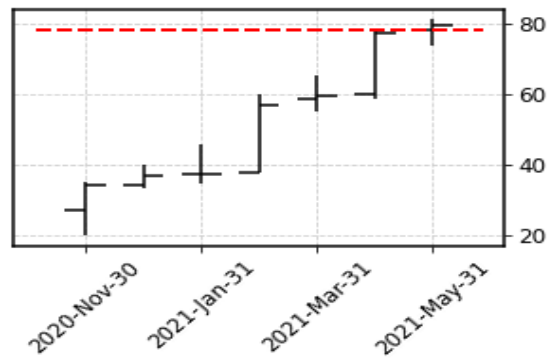
Daily chart



Weekly chart



Monthly chart



Oasis Petroleum Inc., an independent exploration and production company, focuses on the acquisition and development of onshore unconventional oil and natural gas resources in the United States. It operates through Exploration and Production(E&P), and Midstream segments. The E&P segment engages in the acquisition and development of oil and gas properties. The Midstream segment offers midstream services, such as natural gas gathering, compression, processing and, gas lift supply; crude oil gathering, terminaling, and transportation; produced and flowback water gathering, and disposal; and water distribution. As of December 31, 2020, the company had 401,766 net leasehold acres in the Williston Basin; and 24,396 net leasehold acres in the Permian Basin, as well as approximately 152.2 million barrels of oil equivalent of estimated net proved reserves. The company sells its crude oil and natural gas to refiners, marketers, and other purchasers that have access to pipeline and rail facilities. Oasis Petroleum Inc. was founded in 2007 and is headquartered in Houston, Texas.



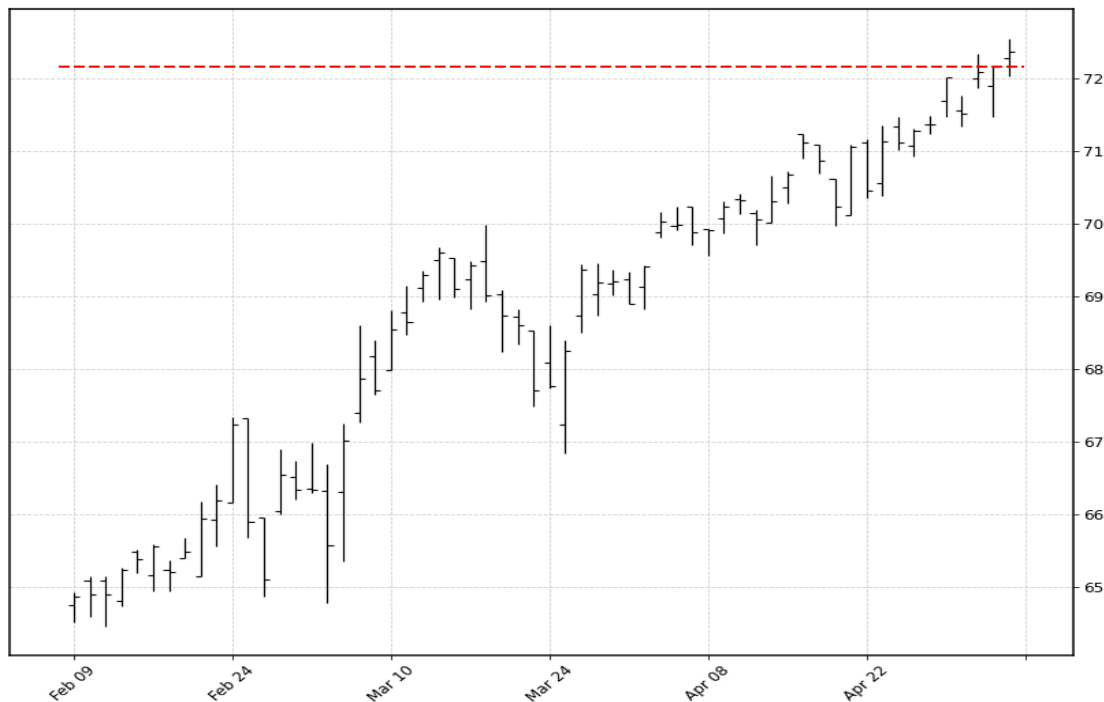


Scan date: 06-05-2021-04_12 | Week number: 18
 Sector: NA | Industry: NA | GicGroup: NA
 WebURL: NA | IPOdate: NA
 EBITDA: NA | Trailing PE: NA | Revenue TTM (Trailing 12 Months): NA | Market Capitalization Mln: NA
 Previous All time high date: 2021-05-04 | Previous ath value (red line): 72.16 Previous close: 72.37
 Total traded /vol*Close/ : 30413203.0

News sentiment **** Negative** **** Positive** **** Neutral**

- <https://seekingalpha.com/article/4422957-iusv-value-shortcomings>
- <https://www.ettrends.com/multi-asset-channel/value-flourishes-consider-low-cost-etf/>
- <https://www.ettrends.com/smart-beta-channel/lower-fees-driving-investors-to-etfs/>
- <https://seekingalpha.com/article/4401134-ishares-core-s-and-p-u-s-value-etf-not-quite-archetypal-value-etf>
- <https://www.fool.com/investing/2021/01/24/value-investing-for-retirement-3-etfs-for-a-winnin/>

Daily chart



Weekly chart



Monthly chart



The investment seeks to track the investment results of the S&P 900 Value Index (the underlying index), which measures the performance of the large- and mid-capitalization value sector of the U.S. equity market. The fund generally invests at least 90% of its assets in securities of the underlying index and in depository receipts representing securities of the underlying index. It may invest the remainder of its assets in certain futures, options and swap contracts, cash and cash equivalents, as well as in securities not included in the underlying index, but which the advisor believes will help the fund track the underlying index.



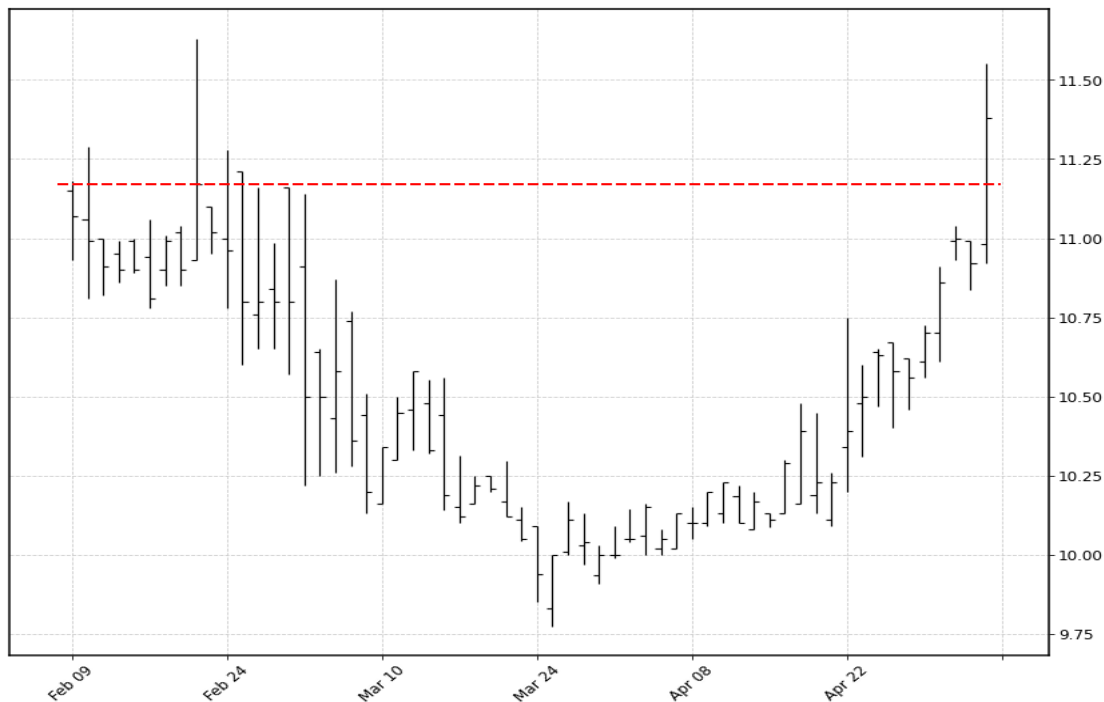


Scan date: 06-05-2021-04_12 | Week number: 18
 Sector: Financial Services | Industry: Shell Companies | GicGroup: NA
 WebURL: NA | IPOdate: 2021-02-05
 EBITDA: NA | Trailing PE: 0 | Revenue TTM (Trailing 12 Months): 0 | Market Capitalization Mln: 504.8917
 Previous All time high date: 2021-02-22 | Previous ath value (red line): 11.17 Previous close: 11.38
 Total traded /vol*Close/ : 24319401.4

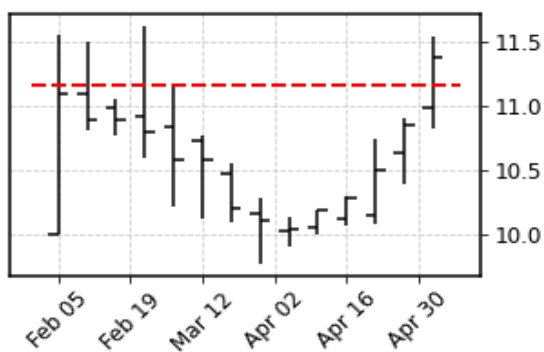
News sentiment **** Negative** **** Positive** **** Neutral**

- <https://seekingalpha.com/article/4421236-smartrent-android-real-estate-comparison-latch>
- <https://seekingalpha.com/article/4421199-smartrent-stock-fwa-a-spac-automating-homes>
- <https://www.pymnts.com/real-estate/2021/smartrent-plans-public-offering-with-2-2-billion-fifth-wall-spac-merger/>
- <https://www.benzinga.com/m-a/21/04/20750351/smart-home-leader-smartrent-going-public-in-spac-deal-what-investors-should-know>
- <https://www.businessinsider.com/smartrent-spac-valuation-fifth-wall-blackstone-invitation-homes-lennar-starwood-2021-4>

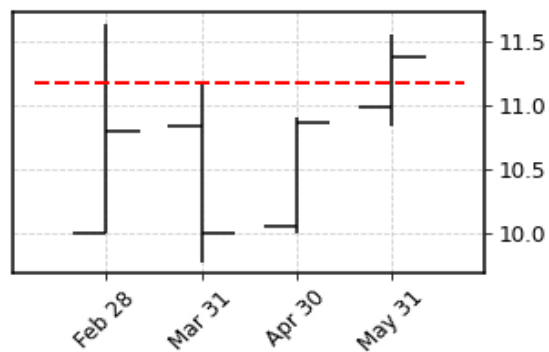
Daily chart



Weekly chart



Monthly chart



Fifth Wall Acquisition Corp. I focuses on effecting a merger, capital stock exchange, asset acquisition, stock purchase, reorganization, or similar business combination with one or more businesses or entities. The company was founded in 2020 and is based in Los Angeles, California.



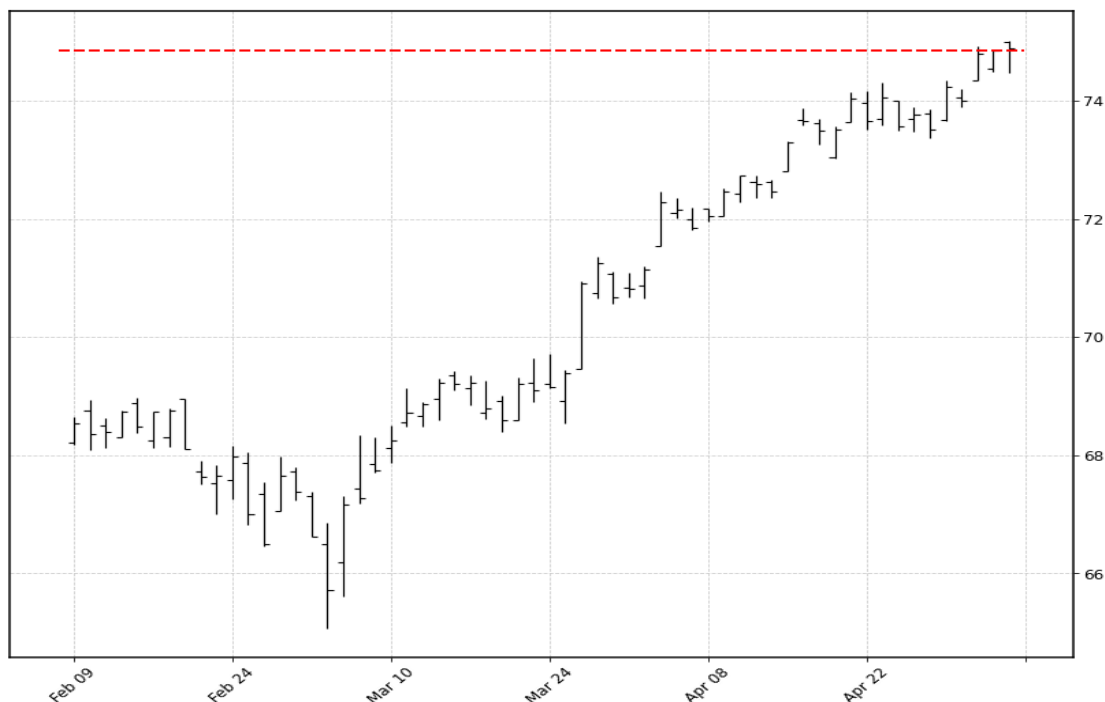


Scan date: 06-05-2021-04_12 | Week number: 18
 Sector: NA | Industry: NA | GicGroup: NA
 WebURL: NA | IPOdate: NA
 EBITDA: NA | Trailing PE: NA | Revenue TTM (Trailing 12 Months): NA | Market Capitalization Mln: NA
 Previous All time high date: 2021-05-04 | Previous ath value (red line): 74.85 Previous close: 74.89
 Total traded /vol*Close/ : 22873502.9

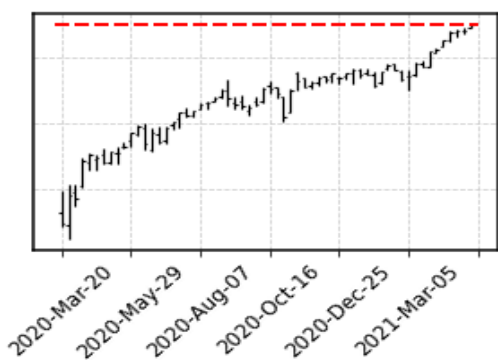
News sentiment **** Negative** **** Positive** **** Neutral**

- <https://www.zacks.com/stock/news/1419955/5-equity-etfs-that-were-red-hot-last-week>
- <https://www.zacks.com/stock/news/1363771/should-first-trust-capital-strength-etf-ftcs-be-on-your-investing-radar>
- <https://seekingalpha.com/article/4407887-best-and-worst-q1-2021-large-cap-blend-etfs-and-mutual-funds>
- <https://www.etf.com/sections/features-and-news/4-top-advisor-etf-picks-2021?nopaging=1>
- <https://www.etf.com/sections/features-and-news/demand-quality-etfs-uneven?nopaging=1>

Daily chart



Weekly chart



Monthly chart



The investment seeks investment results that correspond generally to the price and yield (before the fund's fees and expenses) of an equity index called the Capital Strength Index(SM). The fund will normally invest at least 90% of its net assets (including investment borrowings) in the common stocks and real estate investment trusts (REITs) that comprise the index. The index seeks to provide exposure to well-capitalized companies with strong market positions that have the potential to provide their stockholders with a greater degree of stability and performance over time.





Scan date: 06-05-2021-04_12 | Week number: 18
 Sector: Industrials | Industry: Integrated Freight & Logistics | GicGroup: Transportation
 WebURL: <http://www.hubgroup.com> | IPOdate: 1996-03-13
 EBITDA: 237204992 | Trailing PE: 31.8767 | Revenue TTM (Trailing 12 Months): 3495643904 | Market Capitalization Mln: 2403.2998
 Previous All time high date: 2021-04-15 | Previous ath value (red line): 69.28 Previous close: 70.12
 Total traded /vol*Close/ : 21780113.4

News sentiment **** Negative** **** Positive** **** Neutral**

- <https://www.zacks.com/stock/news/1506639/hub-group-hubg-surpasses-q1-earnings-estimates>
- <https://www.globenewswire.com/news-release/2021/05/05/2223829/0/en/Hub-Group-Inc-Reports-First-Quarter-2021-Results.html>
- <https://www.zacks.com/stock/news/1468197/analysts-estimate-hub-group-hubg-to-report-a-decline-in-earnings-what-to-look-out-for>
- <https://www.globenewswire.com/news-release/2021/04/23/2216187/0/en/Hub-Group-begins-electric-truck-fleet-pilot.html>
- <https://www.globenewswire.com/news-release/2021/04/22/2215528/0/en/Hub-Group-Inc-Schedules-First-Quarter-2021-Earnings-Conference-Call.html>

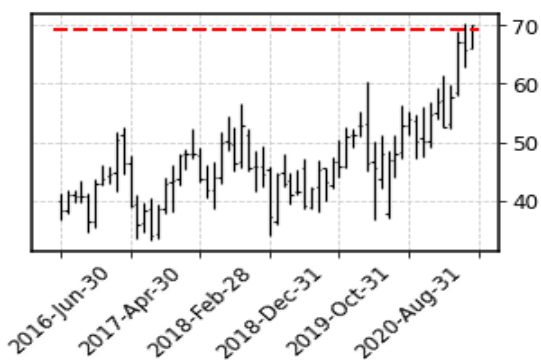
Daily chart



Weekly chart



Monthly chart



Hub Group, Inc., an asset-light freight transportation management company, provides intermodal, truck brokerage, trucking, managed transportation, freight consolidation, warehousing, last mile delivery, international transportation, and other logistics services in North America. Its intermodal services include arranging for the movement of its customers' freight in containers and trailers over distances of 750 miles or more. The company contracts with railroads to provide transportation for the long-haul portion of the shipment between origin or destination and rail terminals for pickup and delivery services, as well as negotiates drayage rates for the transportation between origin and destination points. It also offers warehouse and transportation logistics services, including retailer-driven collaborative consolidation programs, as well as a range of transportation management services and technology solutions, such as shipment optimization, load consolidation, mode selection, carrier management, load planning and execution, and web-based shipment visibility services. In addition, the company provides multi-modal transportation services, such as small parcel, heavyweight, expedited, less-than-truckload, truckload, railcar, and international shipping. As of December 31, 2020, it owned approximately 41,500 53-foot containers. Hub Group, Inc. was founded in 1971 and is headquartered in Oak Brook, Illinois.





Scan date: 06-05-2021-04_12 | Week number: 18
 Sector: Communication Services | Industry: Broadcasting | GicGroup: Media & Entertainment
 WebURL: <http://www.iheartmedia.com> | IPOdate: 2019-05-07
 EBITDA: 411043008 | Trailing PE: 0 | Revenue TTM (Trailing 12 Months): 2948218112 | Market Capitalization Mln: 2803.0602
 Previous All time high date: 2021-04-13 | Previous ath value (red line): 19.79 Previous close: 20.02
 Total traded /vol*Close/ : 20973472.5

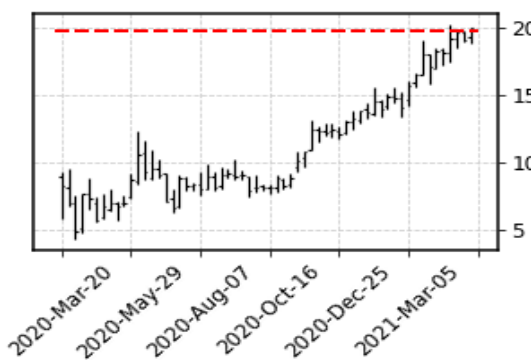
News sentiment ** Negative ** Positive ** Neutral

- <https://www.businesswire.com/news/home/20210505005169/en/%C2%A0Largest-Podcast-Publisher-iHeartMedia-Launches-First-of-its-Kind-Private-Podcast-Ma>
- <https://www.zacks.com/stock/news/1473931/iheartmedia-ihrt-expected-to-beat-earnings-estimates-should-you-buy>
- <https://www.businesswire.com/news/home/20210422006091/en/iHeartMedia-Inc.-to-Report-Quarterly-Financial-Results-on-May-6-2021/>
- <https://www.businesswire.com/news/home/20210419005623/en/iHeartMedia-and-NFL-Team-Up-to-Launch-the-NFL%E2%80%99s-Podcast-Network/>
- <https://www.marketwatch.com/story/iheartmedia-stock-surges-into-record-territory-after-double-upgrade-at-bofa-2021-04-13>

Daily chart



Weekly chart



Monthly chart



iHeartMedia, Inc. operates as a media and entertainment company worldwide. It operates through two segments, Audio, and Audio & Media Services. The Audio segment offers broadcast radio, digital, mobile, podcasts, social, program syndication, traffic, weather, news and sports data distribution, and on-demand entertainment, as well as live events, including mobile platforms and products; and operates Premiere Networks, a national radio network that produces, distributes, or represents approximately 120 syndicated radio programs and services to approximately 6,500 radio station affiliates. It also delivers real-time traffic and incident information, and weather updates, sports, and news through approximately 2,100 radio stations and 170 television affiliates, and Internet and mobile partnerships. As of December 31, 2020, this segment owned 858 radio stations, which included 244 AM and 614 FM radio stations. The Audio and Media Services segment engages in the media representation business. This segment also provides broadcast and webcast software, such as radio station automation, music scheduling, HD2 solutions, newsroom software, audio logging and archiving, single station automation, and contest tracking software; and real-time audio recognition technology to approximately 9,000 radio stations, television music channels, cable companies, satellite music networks, and Internet stations. The company was formerly known as CC Media Holdings, Inc. and changed its name to iHeartMedia, Inc. in September 2014. iHeartMedia, Inc. is headquartered in San Antonio, Texas.



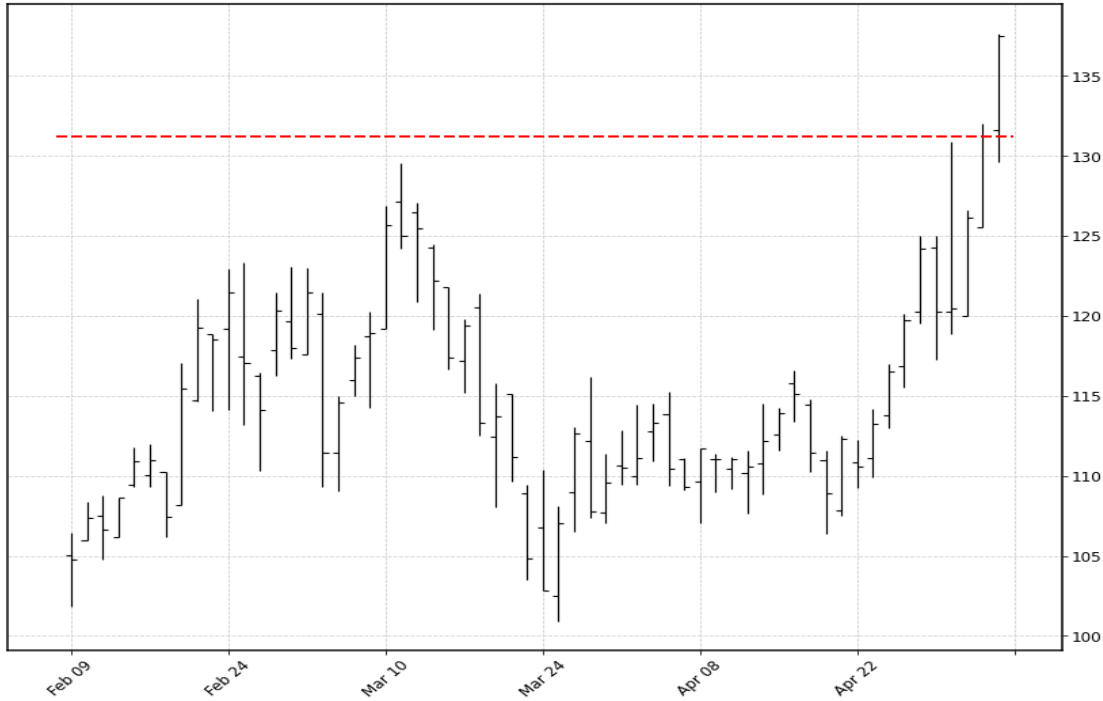


Scan date: 06-05-2021-04_12 | Week number: 18
 Sector: Basic Materials | Industry: Aluminum | GicGroup: Materials
 WebURL: <http://www.kaiseraluminum.com> | IPOdate: 1991-07-11
 EBITDA: 112550000 | Trailing PE: 493.3835 | Revenue TTM (Trailing 12 Months): 1127399936 | Market Capitalization Mln: 2079.8785
 Previous All time high date: 2021-05-04 | Previous ath value (red line): 131.24 Previous close: 137.48
 Total traded /vol*Close/ : 19193170.4

News sentiment **** Negative** **** Positive** **** Neutral**

- <https://seekingalpha.com/article/4423427-kaiser-aluminums-kalu-ceo-keith-harvey-on-q1-2021-results-earnings-call-transcript>
- <https://www.benzinga.com/news/earnings/21/04/20851095/recap-kaiser-aluminum-q1-earnings>
- <https://www.globenewswire.com/news-release/2021/04/28/2219099/10739/en/Kaiser-Aluminum-Corporation-Reports-First-Quarter-2021-Financial-Results.html>
- <https://www.benzinga.com/news/earnings/21/04/20814651/kaiser-aluminums-earnings-outlook>
- <https://www.globenewswire.com/news-release/2021/04/14/2210347/10739/en/Kaiser-Aluminum-Announces-First-Quarter-2021-Earnings-Release-and-Conferenc>

Daily chart



Weekly chart



Monthly chart



Kaiser Aluminum Corporation manufactures and sells semi-fabricated specialty aluminum mill products. The company provides rolled, extruded, and drawn aluminum products used principally for aerospace and defense, automotive, consumer durables, electronics, electrical, and machinery and equipment applications. Its aerospace and high strength products include heat treat plates and sheets, hard alloy extruded shapes, cold finish rods and bars, seamless drawn tubes, and billets for aerospace and defense industries. The company's automotive extrusions include extruded aluminum products for structural components, crash management systems, anti-lock braking systems, and drawn tubes for drive shafts, as well as offers fabrication services, including sawing and cutting to length. Its general engineering products comprise alloy plate, sheet, rod, bar, tube, wire, and standard extrusion shapes used in various applications, including the production of military vehicles, ordnances, semiconductor manufacturing cells, electronic devices, after-market motor sport parts, tooling plates, parts for machinery and equipment, bolts, screws, nails, and rivets. The company also offers extruded, drawn, and cast billet aluminum products for industrial end uses. It sells its products directly to customers through sales personnel located in the United States, Canada, Western Europe, and China, as well as through independent sales agents in other regions of Asia, Latin America, and the Middle East. Kaiser Aluminum Corporation was founded in 1946 and is based in Foothill Ranch, California.





Scan date: 06-05-2021-04_12 | Week number: 18
 Sector: Consumer Cyclical | Industry: Footwear & Accessories | GicGroup: Consumer Durables & Apparel
 WebURL: <http://www.rockybrands.com> | IPOdate: 1993-02-03
 EBITDA: 33769000 | Trailing PE: 21.9406 | Revenue TTM (Trailing 12 Months): 277308992 | Market Capitalization Mln: 456.8645
 Previous All time high date: 2021-04-16 | Previous ath value (red line): 60.0 Previous close: 62.5
 Total traded /vol*Close/ : 15998812.5

News sentiment **** Negative** **** Positive** **** Neutral**

- <https://www.globenewswire.com/news-release/2021/05/05/2223549/0/en/ROCKY-BRANDS-EXTENDS-ITS-MADE-IN-AMERICA-CAPABILITIES-WITH-ROCK-IS>
- <https://www.zacks.com/stock/news/1501031/rocky-brands-rcky-beats-q1-earnings-and-revenue-estimates>
- <https://www.businesswire.com/news/home/20210504006179/en/Rocky-Brands-Inc.-Announces-Record-First-Quarter-Results/>
- <https://www.zacks.com/stock/news/1475276/rocky-brands-rcky-gains-but-lags-market-what-you-should-know>
- <https://www.gurufocus.com/news/1410063/3-outdoor-apparel-companies-with-high-financial-strength>

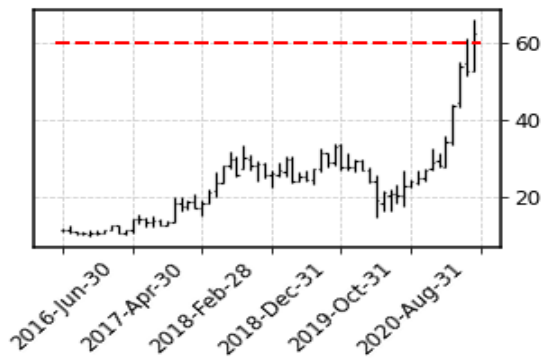
Daily chart



Weekly chart



Monthly chart



Rocky Brands, Inc. designs, manufactures, and markets footwear and apparel under the Rocky, Georgia Boot, Durango, Lehigh, and licensed Michelin brand names in the United States, Canada, and internationally. It operates through three segments: Wholesale, Retail, and Military. The Wholesale segment offers products in approximately 10,000 retail locations through a range of distribution channels comprising sporting goods stores, outdoor retailers, independent shoe retailers, hardware stores, catalogs, mass merchants, uniform stores, farm store chains, specialty safety stores, and specialty and online retailers. The Retail segment sells its products directly to consumers through its e-commerce websites, including rockyboots.com, georgiaboot.com, durangoboot.com, lehighoutfitters.com, lehigsafetyshoes.com, slipgrips.com, and 4eursole.com; Rocky outlet store in Nelsonville, Ohio; and retail stores. The Military segment focuses on building footwear contracts with the U.S. military. It serves industrial and construction workers, as well as workers in the hospitality industry, such as restaurants or hotels; farmers and ranchers; consumers enamored with western influenced fashion; commercial military personnel; hunting, fishing, camping, and hiking enthusiasts; law enforcement, security personnel, and postal employees; and for the U.S. military personnel. Rocky Brands, Inc. was founded in 1932 and is headquartered in Nelsonville, Ohio.



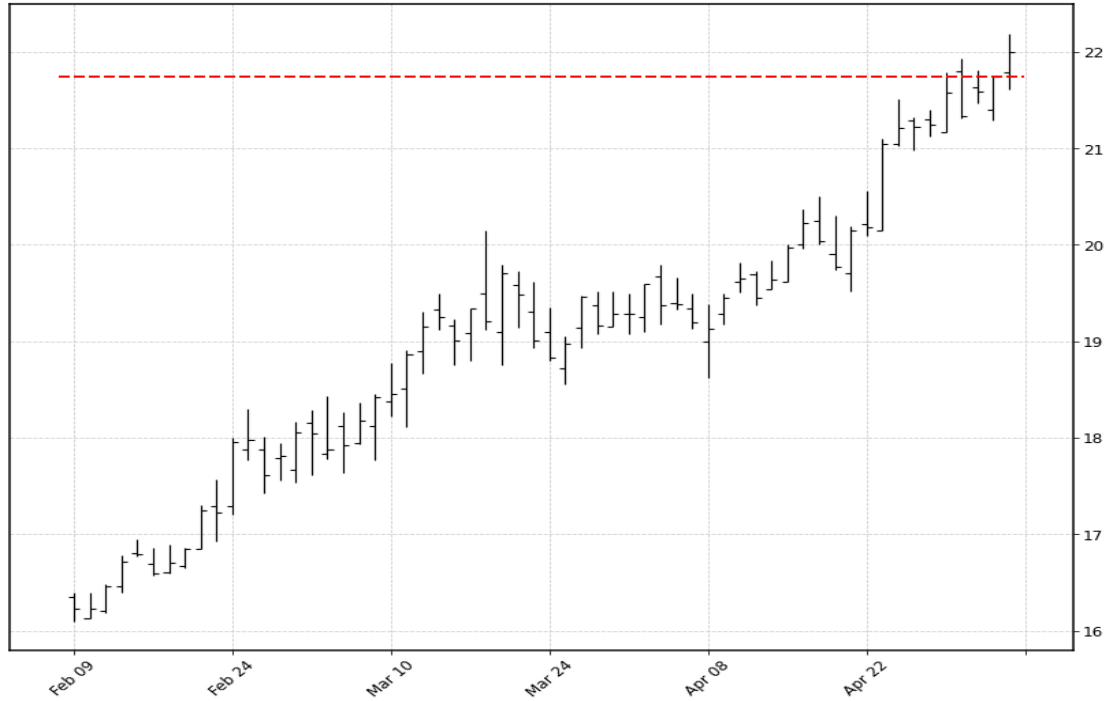


Scan date: 06-05-2021-04_12 | Week number: 18
 Sector: Financial Services | Industry: Banks-Regional | GicGroup: Banks
 WebURL: <http://www.easternbank.com> | IPOdate: 2020-10-15
 EBITDA: NA | Trailing PE: 0 | Revenue TTM (Trailing 12 Months): 581012992 | Market Capitalization Mln: 4112.4111
 Previous All time high date: 2021-05-04 | Previous ath value (red line): 21.75 Previous close: 22.0
 Total traded /vol*Close/ : 15550612.0

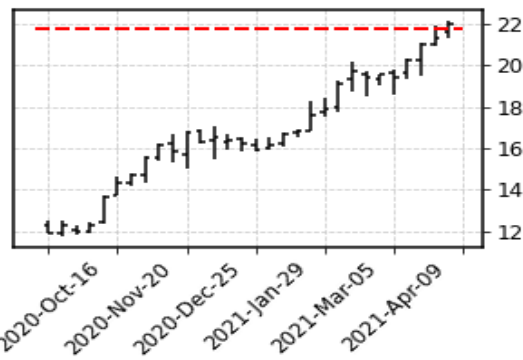
News sentiment **** Negative** **** Positive** **** Neutral**

- <https://www.businesswire.com/news/home/20210503005757/en/Eastern-Bankshares-Inc.-Announces-Intent-to-Declassify-Its-Board-of-Directors/>
- <https://www.businesswire.com/news/home/20210429006116/en/Eastern-Bankshares-Inc.-Reports-First-Quarter-2021-Financial-Results/>
- <https://www.zacks.com/stock/news/1384111/why-you-shouldnt-bet-against-eastern-bankshares-ebc-stock>
- <https://www.fool.com/investing/2021/04/11/eastern-bankshares-is-buying-century-bancorp-is-it/>
- <https://www.pymnts.com/news/partnerships-acquisitions/2021/eastern-bankshares-century-bancorp-merge-with-22-billion-dollars-assets/>

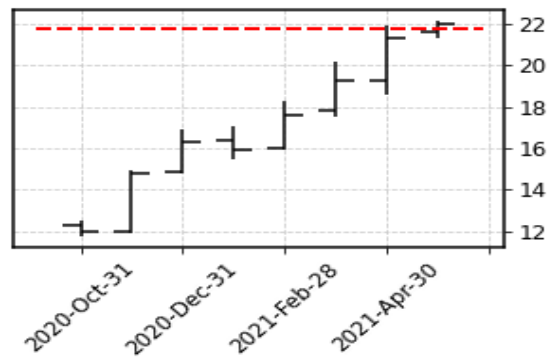
Daily chart



Weekly chart



Monthly chart



Eastern Bankshares, Inc. operates as the bank holding company for Eastern Bank that provides commercial banking products and services primarily to retail, commercial, and small business customers. It operates in two segments, Banking Business and Insurance Agency Business. The company provides interest-bearing and non interest-bearing checking deposits, money market deposits, savings deposits, and certificates of deposits, as well as debit and credit cards. It also offers commercial and industrial loans, commercial real estate and construction loans, business banking loans, residential real estate loans, and home equity and other consumer loans, as well as mortgage and personal loans, auto loans, preferred term loans, small business administration loans, and reserve lines of credit. In addition, the company provides cash reserves, cash management, merchant, escrow express, government banking, international banking, interest on lawyers trust accounts, pension planning, and business telephone banking services, as well as products and services for not-for-profit and healthcare. Further, it offers trust and investment products and services; community development and asset-based lending services; financial planning, portfolio management, wealth management, private banking, and fiduciary products; and electronic banking and foreign exchange services, as well as various insurance products. As of April 1, 2021, the company had approximately 110 locations in eastern Massachusetts, southern and coastal New Hampshire, and Rhode Island. Eastern Bankshares, Inc. was founded in 1818 and is headquartered in Boston, Massachusetts.



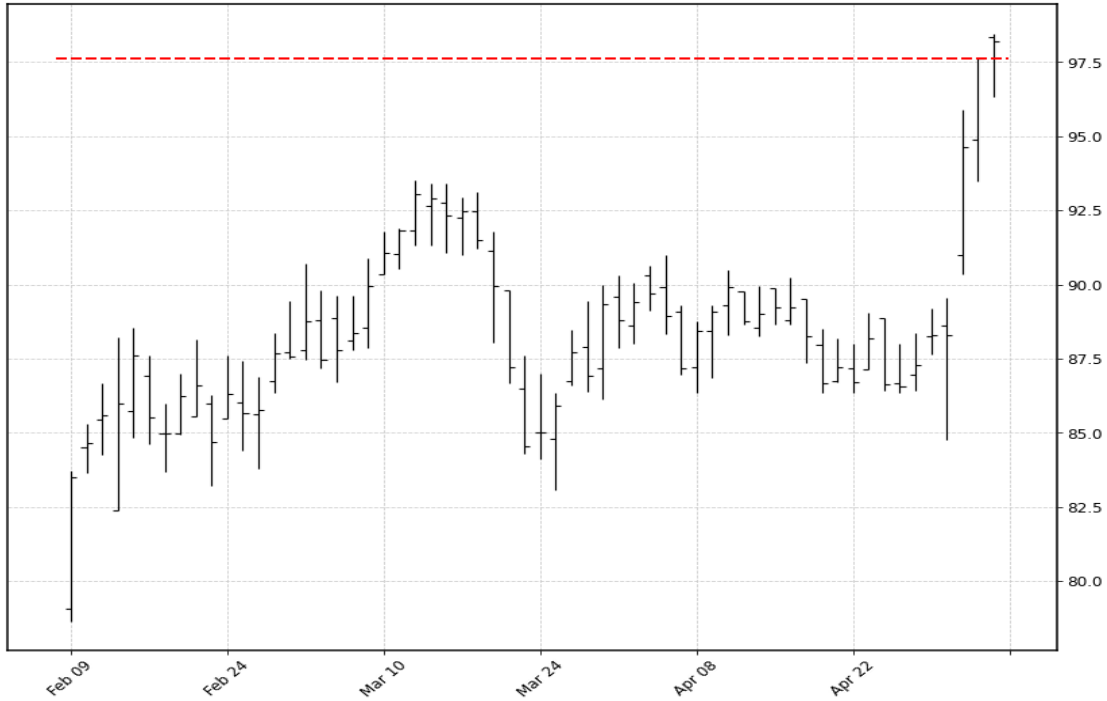


Scan date: 06-05-2021-04_12 | Week number: 18
 Sector: Industrials | Industry: Integrated Freight & Logistics | GicGroup: Transportation
 WebURL: http://www.forwardair.com | IPOdate: 1993-11-16
 EBITDA: 121890000 | Trailing PE: 104.0235 | Revenue TTM (Trailing 12 Months): 1326217984 | Market Capitalization Mln: 2662.6854
 Previous All time high date: 2021-05-04 | Previous ath value (red line): 97.61 Previous close: 98.21
 Total traded /vol*Close/ : 15506769.7

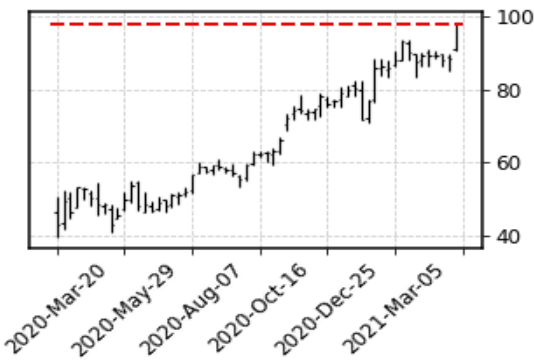
News sentiment **** Negative** **** Positive** **** Neutral**

- <https://www.kiplinger.com/investing/602739/stocks-activist-investors-are-buying>
- <https://www.benzinga.com/trading-ideas/movers/21/05/20919965/why-forward-air-stock-is-moving>
- <https://seekingalpha.com/article/4423273-forward-air-corporation-fwr-d-ceo-thomas-schmitt-on-q1-2021-results-earnings-call-transcript>
- <https://www.freightwaves.com/news/forward-air-sees-more-double-doubles-as-company-returns-to-form>
- <https://www.zacks.com/stock/news/1475351/forward-air-fwr-d-q1-earnings-and-revenues-beat-estimates>

Daily chart



Weekly chart



Monthly chart



Forward Air Corporation, together with its subsidiaries, operates as an asset-light freight and logistics company in the United States and Canada. The company operates through two segments, Expedited Freight and Intermodal. The Expedited Freight segment provides expedited regional, inter-regional, and national less-than-truckload services; local pick-up and delivery services; and other services, which include final mile, truckload, shipment consolidation and deconsolidation, warehousing, customs brokerage, and other handling. It also offers expedited truckload brokerage, dedicated fleet, and high security and temperature-controlled logistics services. The Intermodal segment provides intermodal container drayage services; and contract, and container freight station warehouse and handling services. The company serves freight forwarders, third-party logistics companies, integrated air cargo carriers and passenger, passenger and cargo airlines, and steamship lines and retailers. Forward Air Corporation was founded in 1981 and is headquartered in Greeneville, Tennessee.





Scan date: 06-05-2021-04_12 | Week number: 18

Sector: NA | Industry: NA | GicGroup: NA

WebURL: NA | IPOdate: NA

EBITDA: NA | Trailing PE: NA | Revenue TTM (Trailing 12 Months): NA | Market Capitalization Mln: NA

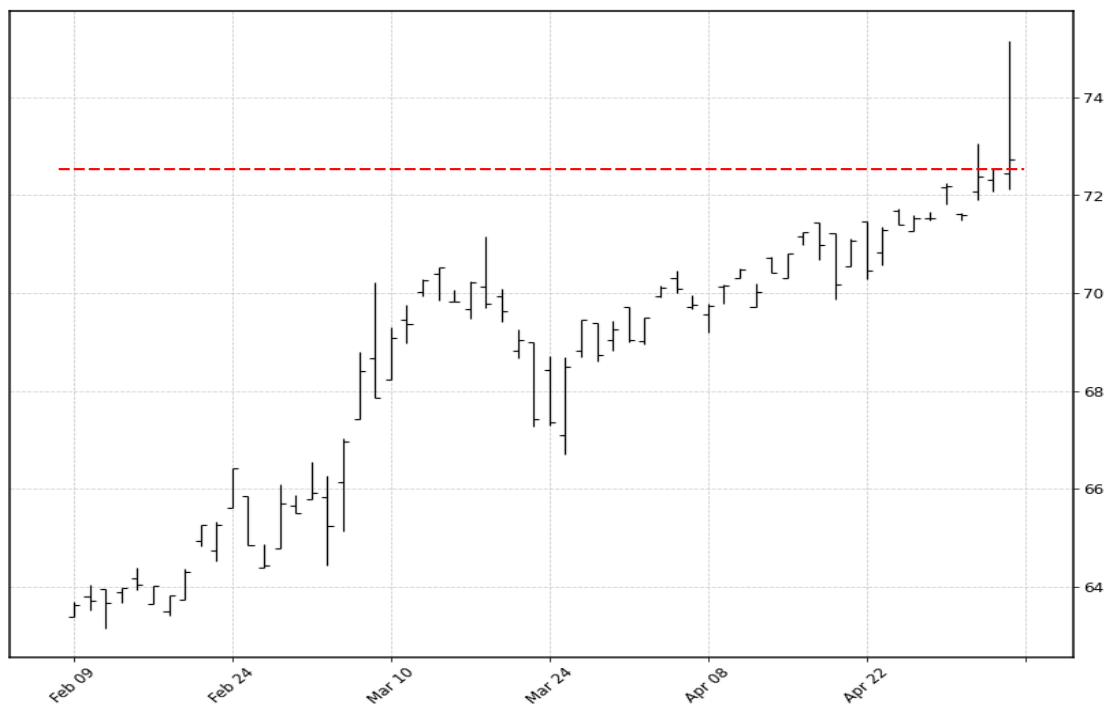
Previous All time high date: 2021-05-04 | Previous ath value (red line): 72.535 Previous close: 72.72

Total traded /vol*Close/ : 15242766.5

News sentiment **** Negative** **** Positive** **** Neutral**

<https://seekingalpha.com/article/4410675-best-and-worst-q1-2021-mid-cap-value-etfs-and-mutual-funds>

Daily chart



Weekly chart



Monthly chart



The investment seeks investment results that correspond generally to the price and yield (before the fund's fees and expenses) of the Nasdaq AlphaDEX® Multi Cap Value Index. The fund will normally invest at least 90% of its net assets (including investment borrowings) in the common stocks that comprise the index. The index is designed to select value stocks from the NASDAQ US 500 Large Cap Index, NASDAQ US 600 Mid Cap Index and NASDAQ US 700 Small Cap Index that may generate positive alpha, or risk-adjusted returns, relative to traditional indices through the use of the AlphaDEX® selection methodology.





Scan date: 06-05-2021-04_12 | Week number: 18
 Sector: Technology | Industry: Information Technology Services | GicGroup: Software & Services
 WebURL: <http://www.exlservice.com> | IPOdate: 2006-10-20
 EBITDA: 168364000 | Trailing PE: 33.489 | Revenue TTM (Trailing 12 Months): 973859008 | Market Capitalization Mln: 3214.6158
 Previous All time high date: 2021-04-19 | Previous ath value (red line): 95.95 Previous close: 96.46
 Total traded /vol*Close/ : 15167081.0

News sentiment **** Negative** **** Positive** **** Neutral**

- <https://seekingalpha.com/article/4423415-exlservice-holdings-inc-exls-ceo-rohit-kapoor-on-q1-2021-results-earnings-call-transcript>
- <https://www.zacks.com/stock/news/1472340/exlservice-holdings-exls-beats-q1-earnings-and-revenue-estimates>
- <https://www.benzinga.com/news/earnings/21/04/20858515/exlservice-holdings-q1-earnings-insights>
- <https://www.globenewswire.com/news-release/2021/04/29/2219459/9060/en/EXL-Reports-2021-First-Quarter-Results.html>
- <https://www.zacks.com/stock/news/1436896/exlservice-holdings-exls-earnings-expected-to-grow-should-you-buy>

Daily chart



Weekly chart



Monthly chart



ExlService Holdings, Inc. provides operations management and analytics services in the United States, the United Kingdom, and internationally. The company offers business process management (BPM) services to the insurance industry in the areas of claims processing, subrogation, premium and benefit administration, agency management, account reconciliation, policy research, underwriting support, new business processing, policy servicing, premium audit, surveys, billing and collection, commercial and residential survey, and customer services. It also provides BPM services related to the care management, utilization management, disease management, payment integrity, revenue optimization, and customer engagement for the healthcare industry; BPM services related to business processes in corporate and leisure travel, such as reservations, customer service, fulfillment, and finance and accounting; and finance and accounting BPM services, including financial planning and analysis, strategic finance, decision support, regulatory reporting, and compliance services. In addition, the company offers BPM services for banking and financial services industry comprising residential mortgage lending, retail banking and credit cards, commercial banking, and investment management; BPM services related to enhancing operating models, enhancing customer experience, reducing costs, shortening turnaround time, and simplifying compliance for clients; and industry-specific digital transformational services. Further, it provides predictive and prescriptive analytics in the areas of customer acquisition and lifecycle management, risk underwriting and pricing, operational effectiveness, credit and operational risk monitoring and governance, payment integrity and care management, and data management. The company was founded in 1999 and is headquartered in New York, New York.





Scan date: 06-05-2021-04_12 | Week number: 18
 Sector: NA | Industry: NA | GicGroup: NA
 WebURL: NA | IPOdate: NA
 EBITDA: NA | Trailing PE: NA | Revenue TTM (Trailing 12 Months): NA | Market Capitalization Mln: NA
 Previous All time high date: 2021-05-04 | Previous ath value (red line): 88.72 Previous close: 88.96
 Total traded /vol*Close/ : 14507863.7

News sentiment ** Negative ** Positive ** Neutral

- <https://www.ettrends.com/nasdaq-portfolio-solutions-channel/buybacks-back-share-repurchases-pkw/>
- <https://www.ettrends.com/nasdaq-portfolio-solutions-channel/buybacks-perking-up-pkw-doing-same/>
- <https://www.zacks.com/stock/news/1300051/etfs-at-risks-if-tax-law-changes-in-us>
- <https://www.etf.com/sections/features-and-news/jp-morgan-not-just-bank-etfs-anymore?nopaging=1>
- <https://www.marketwatch.com/story/etfs-with-big-cisco-stakes-fall-as-network-equipment-giants-stock-set-for-worst-day-in-9-years-2020-08-13>

Daily chart



Weekly chart



Monthly chart



The investment seeks to track the investment results (before fees and expenses) of the NASDAQ US BuyBack Achievers™ Index. The fund generally will invest at least 90% of its total assets in the securities that comprise the underlying index. The NASDAQ includes common stocks in the underlying index pursuant to a proprietary selection methodology that identifies a universe of BuyBack Achievers™.





Scan date: 06-05-2021-04_12 | Week number: 18
 Sector: Industrials | Industry: Consulting Services | GicGroup: Commercial & Professional Services
 WebURL: <http://www.icf.com> | IPOdate: 2006-09-28
 EBITDA: 137436000 | Trailing PE: 33.324 | Revenue TTM (Trailing 12 Months): 1506875008 | Market Capitalization Mln: 1803.7321
 Previous All time high date: 2020-01-13 | Previous ath value (red line): 94.3 Previous close: 95.28
 Total traded /vol*Close/ : 13622086.3

News sentiment **** Negative** **** Positive** **** Neutral**

- <https://www.zacks.com/stock/news/1501406/icf-international-icfi-q1-earnings-and-revenues-beat-estimates>
- <https://www.prnewswire.com/news-releases/icf-reports-first-quarter-2021-results-301283695.html>
- <https://www.benzinga.com/news/earnings/21/05/20916239/icf-internationals-earnings-a-preview>
- <https://www.prnewswire.com/news-releases/southern-california-edison-selects-icf-to-deliver-energy-savings-301280652.html>
- <https://www.prnewswire.com/news-releases/federal-transit-administration-awards-icf-13-million-for-it-modernization-services-301278327.html>

Daily chart



Weekly chart



Monthly chart



ICF International, Inc. provides management, marketing, technology, and policy consulting and implementation services to government and commercial clients in the United States and internationally. The company researches critical policy, industry, stakeholder issues, trends, and behaviors; measures and evaluates results and their impact; and provides strategic planning and advisory services to its clients on how to navigate societal, market, business, communication, and technology challenges. It also identifies, defines, and implements policies, plans, programs, and business tools through a range of standard and customized methodologies for its clients; conducts survey research; collects and analyzes various data to understand critical issues and options for its clients; and provides actionable business intelligence, as well as information and data management solutions that allow integrated and purpose-driven data usage. In addition, the company provides solutions to optimize the customer and citizen experience; modernizes IT systems; and cyber security solutions that support the range of cyber security missions and protect IT infrastructures in the face of relentless threats, as well as designs, develops, and implements technology systems and business tools that are principal to its clients' mission or business performance. Further, it informs and engages its clients' constituents, customers, and employees through public relations, branding and marketing, multichannel and strategic communications, and reputation issues management. The company serves energy, environment, and infrastructure; health, education, and social programs; safety and security; and consumer and financial markets. The company was formerly known as ICF Consulting Group Holdings, LLC and changed its name to ICF International, Inc. in 2006. ICF International, Inc. was founded in 1969 and is headquartered in Fairfax, Virginia.





Scan date: 06-05-2021-04_12 | Week number: 18
 Sector: NA | Industry: NA | GicGroup: NA
 WebURL: NA | IPOdate: NA
 EBITDA: NA | Trailing PE: NA | Revenue TTM (Trailing 12 Months): NA | Market Capitalization Mln: NA
 Previous All time high date: 2021-05-04 | Previous ath value (red line): 45.81 Previous close: 45.8374
 Total traded /vol*Close/ : 13175410.6

News sentiment **** Negative** **** Positive** **** Neutral**

<https://www.zacks.com/stock/news/1096625/can-small-cap-etfs-keep-up-the-winning-trend-in-november>
<https://www.zacks.com/stock/news/1055972/are-smaller-cap-etfs-good-bet-for-september>

Daily chart



Weekly chart



Monthly chart



The investment seeks results that correspond generally to the price and yield (before the fund's fees and expenses) of an equity index called the Nasdaq AlphaDEX® Mid Cap Value Index. The fund will normally invest at least 90% of its net assets (including investment borrowings) in the common stocks that comprise the index. The index is designed to select value stocks from the NASDAQ US 600 Mid Cap Index (the base index) that may generate positive alpha, or risk-adjusted returns, relative to traditional indices through the use of the AlphaDEX® selection methodology.





Scan date: 06-05-2021-04_12 | Week number: 18
 Sector: NA | Industry: NA | GicGroup: NA
 WebURL: NA | IPOdate: NA
 EBITDA: NA | Trailing PE: NA | Revenue TTM (Trailing 12 Months): NA | Market Capitalization Mln: NA
 Previous All time high date: 2021-04-19 | Previous ath value (red line): 94.18 Previous close: 94.7
 Total traded /vol*Close/ : 13024753.9

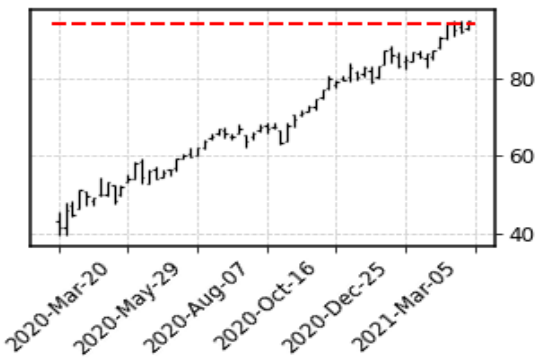
News sentiment **** Negative** **** Positive** **** Neutral**

- <https://www.ettrends.com/record-setting-lumber-prices-lift-timber-etfs/>
- <https://investorplace.com/2021/05/7-10-stocks-to-buy-now-to-make-hay-from-soaring-lumber-prices-ufpi-wy-pch-ctt-wood-ryn-wfg/>
- <https://investorplace.com/2021/04/wood-woes-2021-when-will-lumber-prices-return-to-normal/>
- <https://www.businessinsider.com/lumber-prices-spot-futures-etf-wood-nail-timber-homebuilding-stocks-2021-4>
- <https://www.forbes.com/sites/salgilbertie/2021/04/17/lumber-prices-rocket-higher-as-demand-overwhelms-supply/>

Daily chart



Weekly chart



Monthly chart



The investment seeks to track the investment results of the S&P Global Timber & Forestry Index™. The fund generally will invest at least 90% of its assets in the component securities of the underlying index and in investments that have economic characteristics that are substantially identical to the component securities and may invest up to 10% of its assets in certain futures, options and swap contracts, cash and cash equivalents. The index is comprised of approximately 25 of the largest publicly-traded companies engaged in the ownership, management or upstream supply chain of forests and timberlands. The fund is non-diversified.





Scan date: 06-05-2021-04_12 | Week number: 18
 Sector: Industrials | Industry: Engineering & Construction | GicGroup: Capital Goods
 WebURL: <http://www.myrgroup.com> | IPOdate: 2008-08-13
 EBITDA: 141556992 | Trailing PE: 20.8194 | Revenue TTM (Trailing 12 Months): 2321408000 | Market Capitalization Mln: 1421.6713
 Previous All time high date: 2021-05-04 | Previous ath value (red line): 82.44 Previous close: 84.02
 Total traded /vol*Close/ : 11801533.2

News sentiment ** Negative ** Positive ** Neutral

- <https://www.zacks.com/stock/news/1504065/5-top-defensive-stocks-to-ride-out-market-volatility-in-may>
- <https://seekingalpha.com/article/4423350-myr-group-inc-myr-ceo-rick-swartz-on-q1-2021-results-earnings-call-transcript>
- <https://www.zacks.com/stock/news/1478786/myr-group-myr-recently-broke-out-above-the-20-day-moving-average>
- <https://www.zacks.com/stock/news/1478632/myr-myr-hits-52-week-high-can-the-run-continue>
- <https://www.zacks.com/stock/news/1472299/5-big-winners-as-fed-keeps-rates-near-zero>

Daily chart



Weekly chart



Monthly chart



MYR Group Inc., through its subsidiaries, provides electrical construction services in the United States and Canada. It operates through two segments, Transmission and Distribution, and Commercial and Industrial. The company's Transmission and Distribution segment offers a range of services on electric transmission and distribution networks, and substation facilities, including design, engineering, procurement, construction, upgrade, maintenance, and repair services with primary focus on construction, maintenance, and repair to customers in the electric utility industry. Its services include construction and maintenance of high voltage transmission lines, substations, and lower voltage underground and overhead distribution systems, and renewable power facilities; and limited gas construction services, as well as emergency restoration services in response to hurricane, ice, or other storm related damages. This segment serves as a prime contractor to customers, such as investor-owned utilities, cooperatives, private developers, government-funded utilities, independent power producers, independent transmission companies, industrial facility owners, and other contractors. Its Commercial and Industrial segment provides services, such as design, installation, maintenance, and repair of commercial and industrial wiring; and installation of traffic networks, bridge, roadway, and tunnel lighting. This segment offers its services for airports, hospitals, data centers, hotels, stadiums, convention centers, renewable energy projects, manufacturing plants, processing facilities, waste-water treatment facilities, mining facilities, and transportation control and management systems. It serves general contractors, commercial and industrial facility owners, governmental agencies, and developers. MYR Group Inc. was founded in 1891 and is headquartered in Henderson, Colorado.



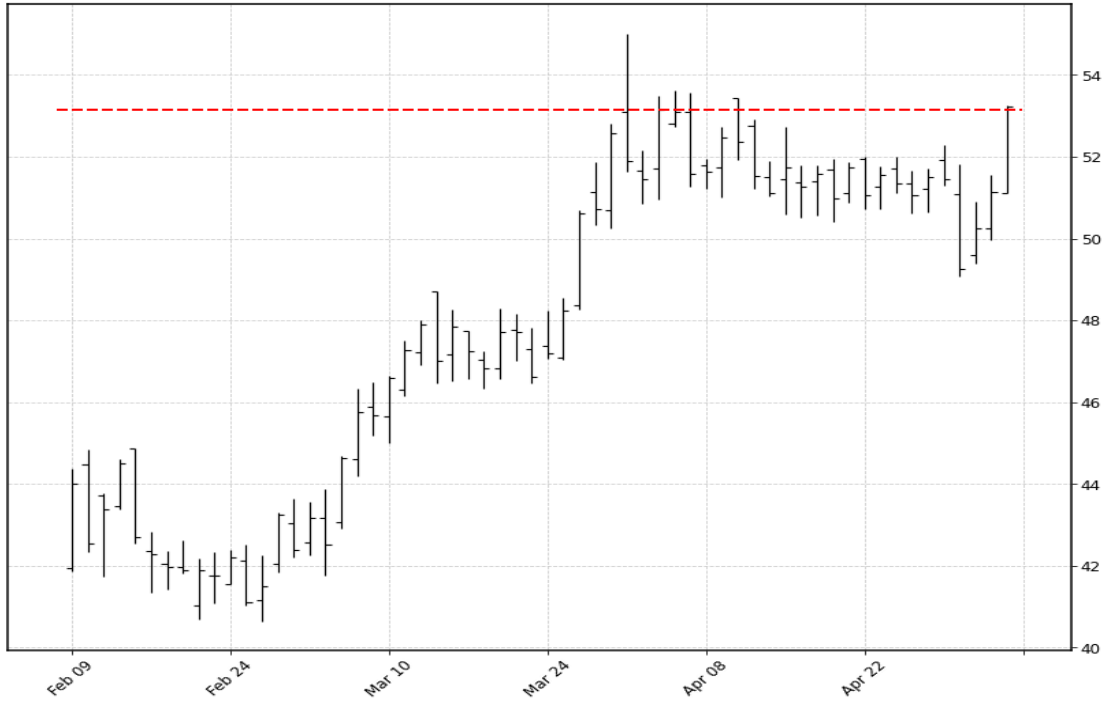


Scan date: 06-05-2021-04_12 | Week number: 18
 Sector: Consumer Defensive | Industry: Packaged Foods | GicGroup: Household & Personal Products
 WebURL: <http://www.central.com> | IPOdate: 1993-07-15
 EBITDA: 280696992 | Trailing PE: 21.9782 | Revenue TTM (Trailing 12 Months): 2804911104 | Market Capitalization Mln: 2957.4876
 Previous All time high date: 2021-04-05 | Previous ath value (red line): 53.14 Previous close: 53.22
 Total traded /vol*Close/ : 10277048.1

News sentiment **** Negative** **** Positive** **** Neutral**

<https://www.zacks.com/stock/news/405085/analysts-estimate-central-garden-centa-to-report-a-decline-in-earnings-what-to-look-out-for>

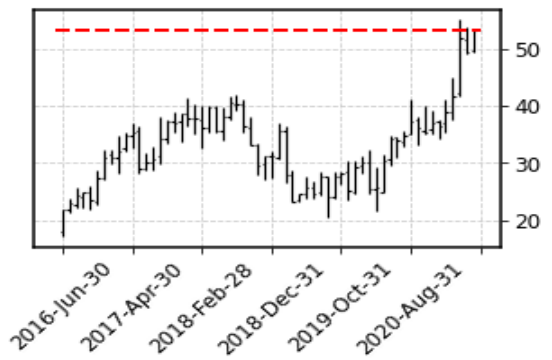
Daily chart



Weekly chart



Monthly chart



Central Garden & Pet Company produces and distributes various products for the lawn and garden, and pet supplies markets in the United States. It provides pet supplies products, including edible chews and treats, dog chew toys, dog play toys, natural dog treats and chews, pet dental chews and solutions, dog training pads, pet containment, grooming supplies, and other accessories; products for birds, small animals, and specialty pets comprising food, cages and habitats, toys, chews, and related accessories; animal and household health and insect control products; live fish and products for fish, reptiles, and other aquarium-based pets, such as aquariums, furniture and lighting fixtures, pumps, filters, water conditioners, food, and supplements; and products for horses and livestock, as well as outdoor cushions and pillows. The company sells its pet supplies products under the Aqueon, Cadet, Comfort Zone, Farnam, Four Paws, Kaytee, K&H Pet Products, Nylabone, and Zilla brands, as well as under Adams, Altosid, Arden Companies, Coralife, C&S Products, Interpet, Pet Select, TFH, and Zodiac other brands. It also offers lawn and garden supplies products that include grass seed; wild bird feed, bird feeders, bird houses, and other birding accessories; fertilizers; decorative outdoor lifestyle products; live plants; and weed and grass, as well as other herbicides, insecticide, and pesticide products. The company sells its lawn and garden supplies products under the AMDRO, Ironite, Pennington, and Sevin brands, as well as under Bell Nursery, Lilly Miller, and Over-N-Out other brand names. Central Garden & Pet Company was founded in 1955 and is based in Walnut Creek, California.





Scan date: 06-05-2021-04_12 | Week number: 18
 Sector: Industrials | Industry: Electrical Equipment & Parts | GicGroup: Capital Goods
 WebURL: <http://www.encorewire.com> | IPOdate: 1992-07-16
 EBITDA: 147584000 | Trailing PE: 16.1055 | Revenue TTM (Trailing 12 Months): 1418294016 | Market Capitalization Mln: 1590.1669
 Previous All time high date: 2021-05-04 | Previous ath value (red line): 78.14 Previous close: 78.29
 Total traded /vol*Close/ : 9699896.1

News sentiment **** Negative** **** Positive** **** Neutral**

- <https://www.businesswire.com/news/home/20210505005785/en/Encore-Wire-Announces-Cash-Dividend/>
- <https://seekingalpha.com/article/4421746-encore-wire-corporation-wire-ceo-daniel-jones-on-q1-2021-results-earnings-call-transcript>
- <https://www.businesswire.com/news/home/20210426005865/en/Encore-Wire-Reports-First-Quarter-Results-Enhances-Liquidity-and-Maintains-Balance-Sheet-St>
- <https://www.globenewswire.com/news-release/2021/04/15/2211295/0/en/Melcor-REIT-announces-April-May-and-June-distribution-of-0-035-per-unit-announces-G>
- <https://seekingalpha.com/article/4406744-encore-wire-corporation-wire-ceo-daniel-jones-on-q4-2020-results-earnings-call-transcript>

Daily chart



Weekly chart



Monthly chart



Encore Wire Corporation manufactures and sells electrical building wires and cables for interior electrical wiring in the United States. Its products include NM-B cables for use as interior wiring in homes, apartments, and manufactured housing; THHN/THWN-2 cables and metal-clad and armored cables for use as wiring in commercial and industrial buildings; UF-B cables; XHHW-2 cables; RHH/RHW-2 cables; USE-2 cables; and other types of wire products. The company sells its products to wholesale electrical distributors primarily through independent manufacturers' representatives. Encore Wire Corporation was incorporated in 1989 and is headquartered in McKinney, Texas.





Scan date: 06-05-2021-04_12 | Week number: 18
 Sector: Financial Services | Industry: Banks-Regional | GicGroup: Banks
 WebURL: <http://www.servisfirstbank.com> | IPOdate: 2014-05-14
 EBITDA: NA | Trailing PE: 19.3038 | Revenue TTM (Trailing 12 Months): 348020000 | Market Capitalization Mln: 3596.0233
 Previous All time high date: 2021-05-04 | Previous ath value (red line): 66.03 Previous close: 66.42
 Total traded /vol*Close/ : 9248586.5

News sentiment **** Negative** **** Positive** **** Neutral**

- <https://www.globenewswire.com/news-release/2021/04/28/2218962/0/en/ServisFirst-Bancshares-Inc-Named-to-2021-KBW-Bank-Honor-Roll-Guardians-of-Growth.html>
- <https://www.globenewswire.com/news-release/2021/04/28/2218847/0/en/ServisFirst-Bank-Announces-New-Hire-to-Tampa-Bay-Banking-Team.html>
- <https://www.globenewswire.com/news-release/2021/04/26/2217113/0/en/ServisFirst-Bank-Announces-Growth-in-Central-Florida.html>
- <https://www.globenewswire.com/news-release/2021/04/26/2217094/0/en/ServisFirst-Bank-Announces-Director-of-Business-Development.html>
- <https://seekingalpha.com/article/4419920-servisfirst-bancshares-inc-sfbs-ceo-tom-broughton-on-q1-2021-results-earnings-call-transcript>

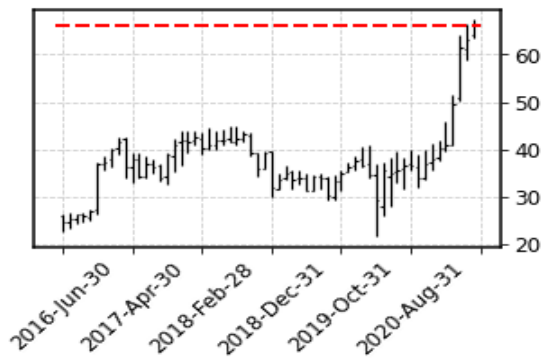
Daily chart



Weekly chart



Monthly chart



ServisFirst Bancshares, Inc. operates as the bank holding company for ServisFirst Bank that provides various banking services to individual and corporate customers. The company accepts demand, time, savings, and other deposits; checking, money market, and IRA accounts; and certificates of deposit. Its loan products include commercial lending products, such as seasonal, bridge, and term loans for working capital, expansion of the business, acquisition of property, and plant and equipment, as well as commercial lines of credit; commercial real estate loans, construction and development loans, and residential real estate loans; and consumer loans, such as home equity loans, vehicle financing, loans secured by deposits, and secured and unsecured personal loans. The company also offers other banking products and services comprising telephone and mobile banking, direct deposit, Internet banking, traveler's checks, safe deposit boxes, attorney trust accounts, automatic account transfers, automated teller machines, and debit card systems, as well as Visa credit cards; treasury and cash management services; wire transfer, night depository, banking-by-mail, and remote capture services; and correspondent banking services to other financial institutions. In addition, it holds and manages participations in residential mortgages and commercial real estate loans originated by ServisFirst Bank in Alabama, Florida, Georgia, and Tennessee. It operates 21 full-service banking offices located in Jefferson, Shelby, Madison, Montgomery, Houston, Mobile, and Baldwin Counties in Alabama; Escambia and Hillsborough Counties in Florida; Cobb and Douglas Counties in Georgia; Charleston County, South Carolina; and Davidson County, Tennessee, as well as loan production offices in Columbus, Georgia, Sarasota, Florida, and Summerville, South Carolina. The company was founded in 2005 and is headquartered in Birmingham, Alabama.



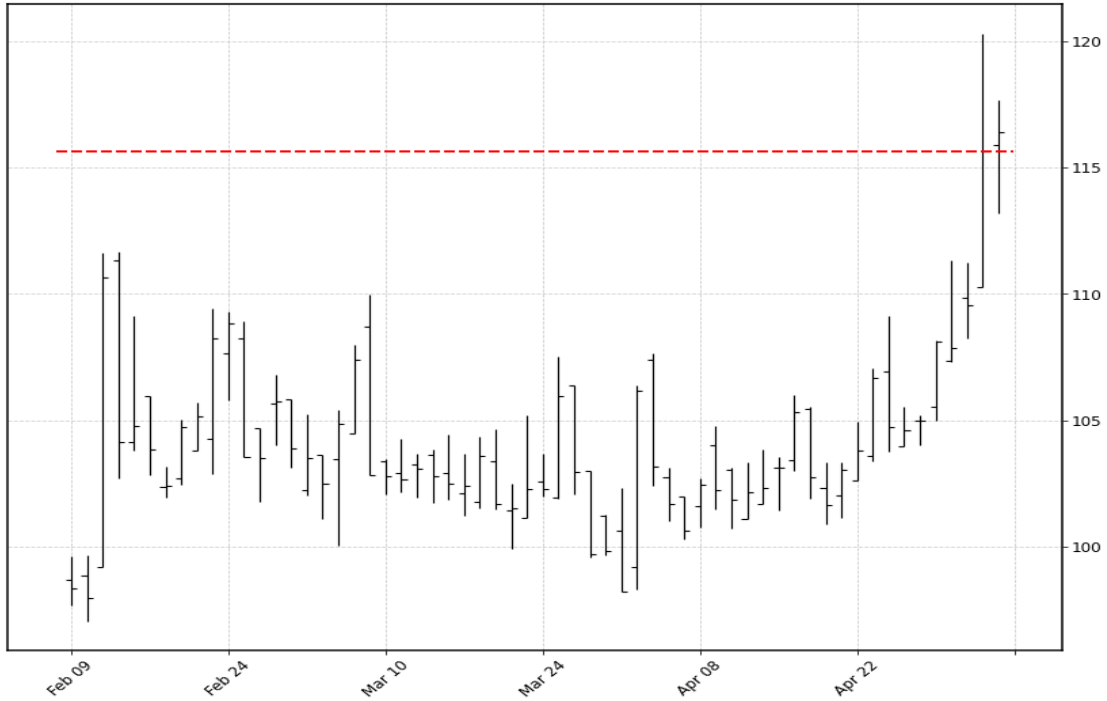


Scan date: 06-05-2021-04_12 | Week number: 18
 Sector: Real Estate | Industry: Real Estate Services | GicGroup: Real Estate
 WebURL: <http://www.colliers.com> | IPOdate: 1995-01-20
 EBITDA: 352966016 | Trailing PE: 95.6615 | Revenue TTM (Trailing 12 Months): 2931142912 | Market Capitalization Mln: 5111.7343
 Previous All time high date: 2021-05-04 | Previous ath value (red line): 115.65 Previous close: 116.42
 Total traded /vol*Close/ : 7635172.9

News sentiment **** Negative** **** Positive** **** Neutral**

- <https://www.zacks.com/stock/news/1504122/strength-seen-in-colliers-international-cigi-can-its-56-jump-turn-into-more-strength>
- <https://seekingalpha.com/article/4424174-colliers-international-groups-cigi-ceo-jay-hennick-on-q1-2021-results-earnings-call>
- <https://pulse2.com/cigi-stock-nasdaq-colliers-international-from-109-56-to-120-30-9-8-increase-intraday-explanation/>
- <https://www.zacks.com/stock/news/1498518/colliers-international-cigi-q1-earnings-and-revenues-beat-estimates>
- <https://www.globenewswire.com/news-release/2021/05/04/2222091/8534/en/Colliers-Reports-Strong-First-Quarter-Results.html>

Daily chart



Weekly chart



Monthly chart



Colliers International Group Inc. provides commercial real estate services to corporate and institutional clients in the Americas, Europe, the Middle East, Africa, and the Asia Pacific. It offers sales brokerage services, which include purchases and sales, debt placement, equity capital raising, market value opinions, acquisition advisory, and transaction management services; and lease brokerage services comprising landlord and tenant representation services. The company provides outsourcing and advisory services that consist of corporate and workplace solutions; property management services comprising building operations and maintenance, facilities management, lease administration, property accounting and financial reporting, contract management and, construction management; project management services, including bid document review, construction monitoring and delivery management, contract administration and integrated cost control, development management, facility and engineering functionality, milestone and performance monitoring, quality assurance, risk management and strategic project consulting; engineering design services for property and building, infrastructure, transportation, environmental and telecommunications end-markets; valuation and advisory services; workplace strategy services; loan servicing; property marketing; and research services. It also offers investment management services comprising asset management advisory and administration, and transaction services. The company was founded in 1972 and is headquartered in Toronto, Canada.



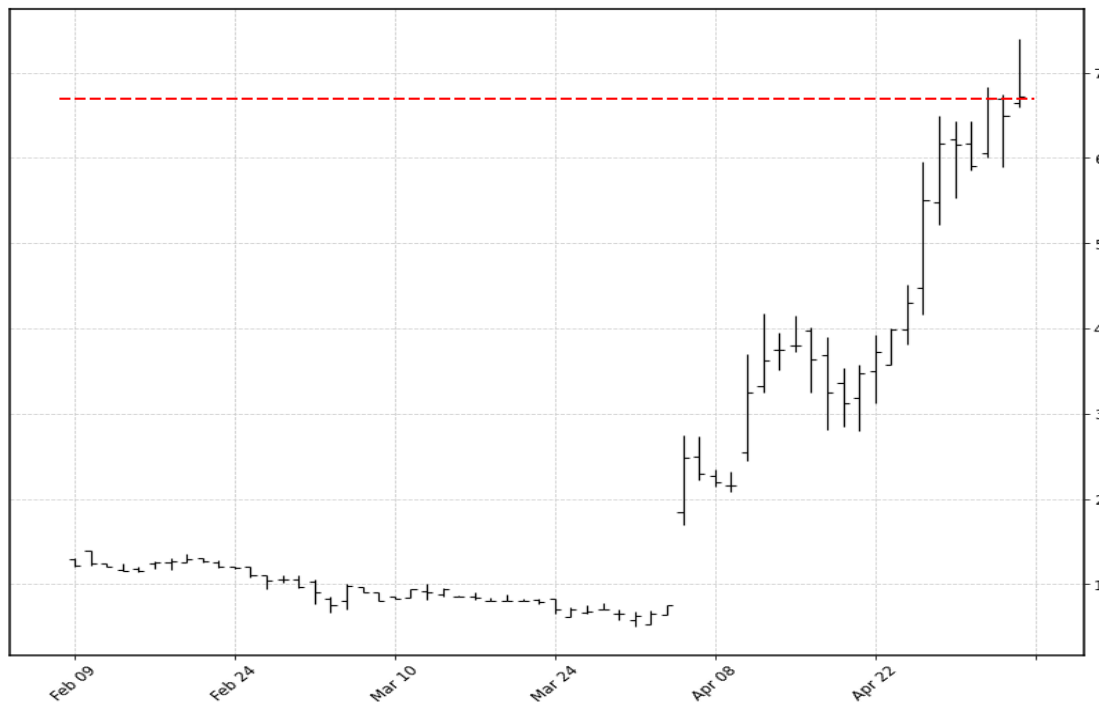


Scan date: 06-05-2021-04_12 | Week number: 18
 Sector: Other | Industry: Other | GicGroup: NA
 WebURL: NA | IPOdate: 2018-03-12
 EBITDA: NA | Trailing PE: 0 | Revenue TTM (Trailing 12 Months): 0 | Market Capitalization Mln: NA
 Previous All time high date: 2021-05-03 | Previous ath value (red line): 6.7 Previous close: 6.72
 Total traded /vol*Close/ : 7402201.0

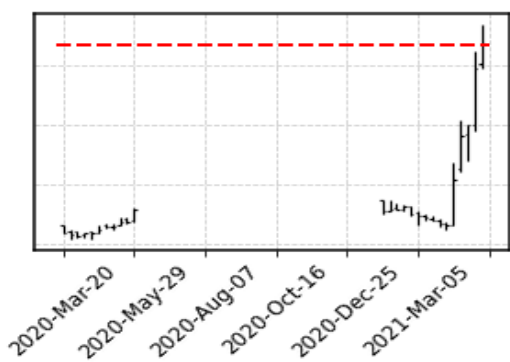
News sentiment **** Negative** **** Positive** **** Neutral**

*Unfortunately, news are not available for this ticker

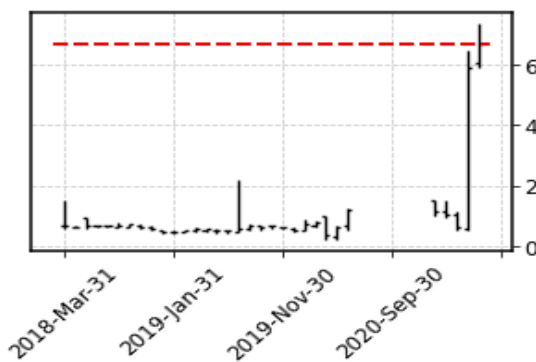
Daily chart



Weekly chart



Monthly chart



Mudrick Capital Acquisition Corp. II is a blank check company. The company focuses on effecting a merger, share exchange, asset acquisition, share purchase, reorganization or similar business combination with one or more businesses. The company was founded in 2020 and is based in New York, New York.





Scan date: 06-05-2021-04_12 | Week number: 18
 Sector: Communication Services | Industry: Electronic Gaming & Multimedia | GicGroup: NA
 WebURL: http://neogames.com | IPOdate: 2020-11-19
 EBITDA: 24611000 | Trailing PE: 0 | Revenue TTM (Trailing 12 Months): 49202000 | Market Capitalization Mln: 1234.3296
 Previous All time high date: 2021-05-04 | Previous ath value (red line): 49.54 Previous close: 49.69
 Total traded /vol*Close/ : 5394793.6

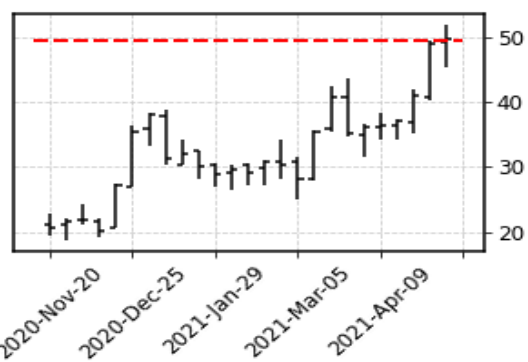
News sentiment ** Negative ** Positive ** Neutral

- <https://www.globenewswire.com/news-release/2021/05/04/2222865/0/en/NeoGames-Announces-First-Quarter-2021-Earnings-Release-Date.html>
- <https://www.globenewswire.com/news-release/2021/04/20/2213701/0/en/NeoGames-Files-Annual-Report-on-Form-20-F-for-the-Year-Ended-December-31-2020.html>
- <https://seekingalpha.com/article/4416605-neogames-ilottery-leader-and-growing>
- <https://seekingalpha.com/article/4413201-neogames-sa-ngms-ceo-moti-malul-on-q4-2020-results-earnings-call-transcript>
- <https://www.globenewswire.com/news-release/2021/03/10/2190825/0/en/NeoGames-Announces-Fourth-Quarter-and-Full-Year-2020-Results.html>

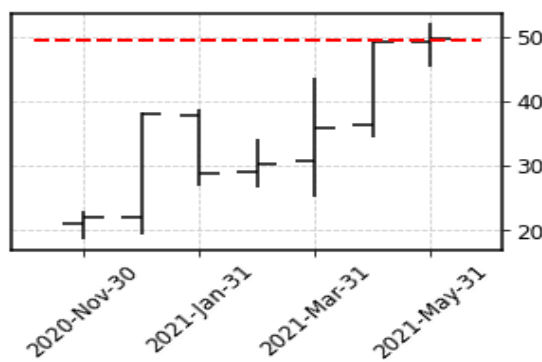
Daily chart



Weekly chart



Monthly chart



NeoGames S.A. provides a suite of iLottery technology solutions worldwide. The company offers various technology platforms, a range of value-added services, and a game studio that provides a portfolio of draw based games and instant tickets through personal computers, smartphones, and handheld devices. It also develops and operates online lotteries and games that allows lottery operators to distribute lottery products through online sales channels using the company's technology. In addition, the company offers software development and platforms sub-licensing services; and regulation and compliance, payment processing, risk management, player relationship management, and player value optimization services. NeoGames S.A. was incorporated on 2014 and is headquartered in Tel Aviv, Israel.





Scan date: 06-05-2021-04_12 | Week number: 18
 Sector: Financial Services | Industry: Banks-Regional | GicGroup: Banks
 WebURL: <http://www.origin.bank> | IPOdate: 2018-05-09
 EBITDA: NA | Trailing PE: 17.2944 | Revenue TTM (Trailing 12 Months): 230823008 | Market Capitalization Mln: 1044.5985
 Previous All time high date: 2021-05-04 | Previous ath value (red line): 44.32 Previous close: 45.0
 Total traded /vol*Close/ : 4805010.0

News sentiment **** Negative** **** Positive** **** Neutral**

- <https://www.zacks.com/stock/news/1469633/origin-bancorp-obnk-beats-q1-earnings-and-revenue-estimates>
- <https://www.globenewswire.com/news-release/2021/04/28/2219100/0/en/Origin-Bancorp-Inc-Announces-Declaration-of-Quarterly-Cash-Dividend.html>
- <https://www.globenewswire.com/news-release/2021/04/28/2219109/0/en/Origin-Bancorp-Inc-Reports-Earnings-for-First-Quarter-2021.html>
- <https://www.globenewswire.com/news-release/2021/04/09/2207654/0/en/Origin-Bancorp-Inc-Announces-First-Quarter-2021-Earnings-Release-and-Conference-Call.html>
- <https://www.zacks.com/stock/news/1279269/why-origin-bancorp-obnk-stock-might-be-a-great-pick>

Daily chart



Weekly chart



Monthly chart



Origin Bancorp, Inc. operates as a bank holding company for Origin Bank that provides banking and financial services to small and medium-sized businesses, municipalities, high net worth individuals, and retail clients in Louisiana, Texas, and Mississippi. It offers noninterest and interest-bearing checking accounts, savings deposits, money market accounts, and time deposits; and offers commercial real estate, construction/land development, consumer, residential real estate, commercial and industrial, mortgage warehouse, residential mortgage, and paycheck protection program loans. The company also offers personal and commercial property, and casualty insurance products; and Internet banking and voice response information, mobile applications, cash management, overdraft protection, direct deposit, safe deposit box, U.S. savings bonds, and automatic account transfer services; and treasury management, mortgage origination and servicing facilities, peer-to-peer electronic pay solutions, and personal financial management solutions. As of December 31, 2020, it operated 43 banking centers. The company was founded in 1912 and is headquartered in Ruston, Louisiana.



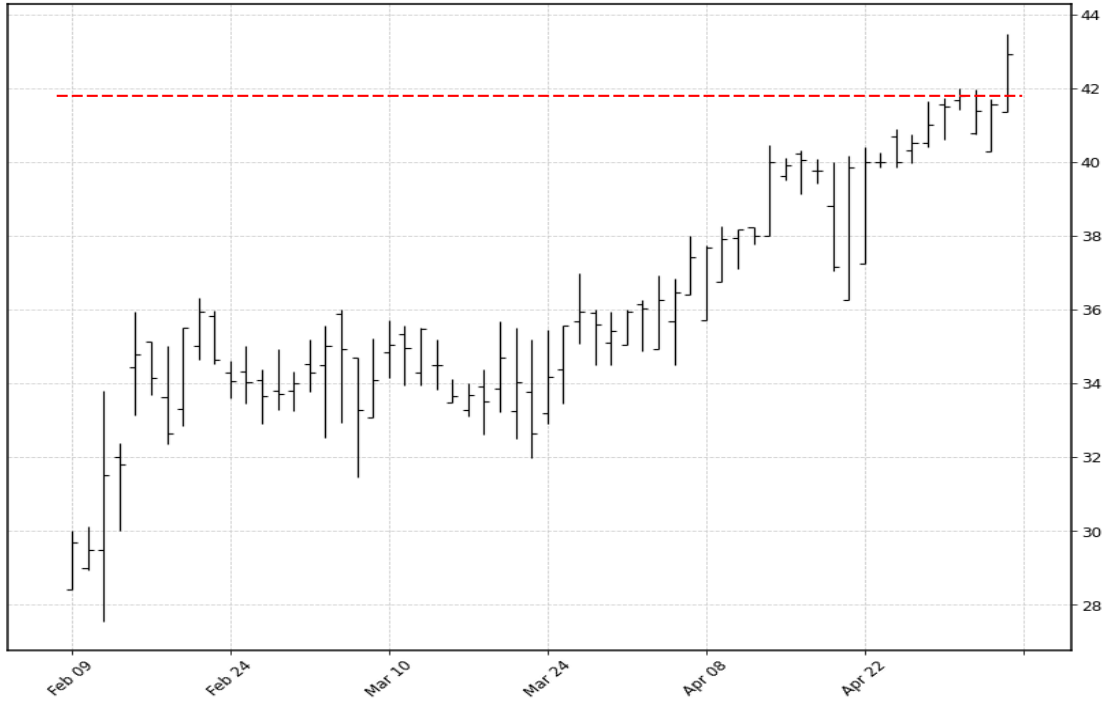


Scan date: 06-05-2021-04_12 | Week number: 18
 Sector: Energy | Industry: Oil & Gas E&P | GicGroup: NA
 WebURL: <http://www.extractionog.com> | IPOdate: 2021-01-21
 EBITDA: 408524000 | Trailing PE: 0 | Revenue TTM (Trailing 12 Months): 528865984 | Market Capitalization Mln: 1090.3297
 Previous All time high date: 2021-04-30 | Previous ath value (red line): 41.78 Previous close: 42.91
 Total traded /vol*Close/ : 4668693.8

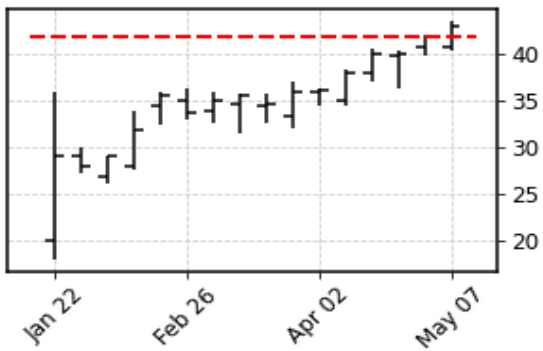
News sentiment ** Negative ** Positive ** Neutral

- <https://www.zacks.com/stock/news/1389780/new-strong-sell-stocks-for-april-13th>
- <https://seekingalpha.com/article/4415082-extraction-oil-gas-inc-xog-ceo-thomas-tyree-on-q4-2020-results-earnings-call-transcript>
- <https://www.globenewswire.com/news-release/2021/03/18/2195794/0/en/Extraction-Oil-Gas-Announces-Fourth-Quarter-and-Full-Year-2020-Results-Provides-Up>
- <https://www.globenewswire.com/news-release/2021/02/09/2172693/0/en/Extraction-Oil-Gas-Provides-2021-Guidance.html>
- <https://www.globenewswire.com/news-release/2021/01/20/2161694/0/en/Extraction-Oil-Gas-Completes-Financial-Restructuring.html>

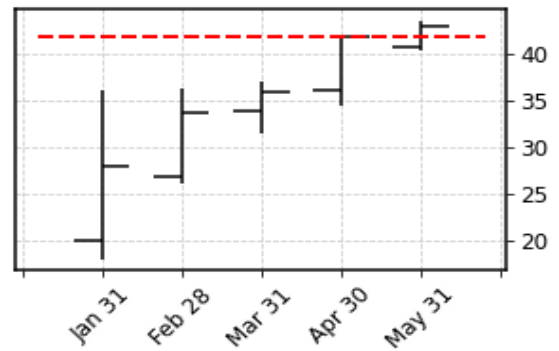
Daily chart



Weekly chart



Monthly chart



Extraction Oil & Gas, Inc., an independent oil and gas company, focuses on the acquisition, development, and production of oil, natural gas, and natural gas liquid reserves in the Rocky Mountain region, primarily in the Wattenberg Field of the Denver-Julesburg (DJ) Basin of Colorado. The company also engages in the construction and support of midstream assets to gather, process, and produce crude oil and gas. As of December 31, 2020, it had approximately 140,000 net acres of contiguous acreage blocks in the productive areas of the DJ Basin; held 96,700 net acres outside of the Core DJ Basin; had estimated proved reserves of 145.9 MMBoe; and had 1,322 gross producing wells. The company was incorporated in 2012 and is headquartered in Denver, Colorado.

