

## ***Sliptrack Systems***

***Slotted Deflection Track Systems  
for Interior and Exterior Walls.***

***Head-of-wall track installation  
and code compliance - made easy.***



1-8884SLPTRK [1-888-475-7875]

[www.sliptrack.com](http://www.sliptrack.com)



**SliptrackSystems**

*Another trade-friendly product from  
BRADY CONSTRUCTION INNOVATIONS, Inc.*

*Exclusive Manufacturer  
of SLP-TRK®*



**DIETRICH**  
METAL FRAMING  
A Worthington Industries Company



Trade-Friendly Products

## For contractors, a cost-effective, simple way to comply with code

Complying with code is usually complicated, expensive and time-consuming. Sliptrack remedies all of that. The product ensures cost-effective installation that comply with code.

Sliptrack is simple to install and combines easily into a wide variety of systems, so you don't have to give up your preferred head-of-wall products. Multiple fastening points give you plenty of options, too. Sliptrack is so predictable to use, you can estimate the job accurately and protect your profit margin from costly come-backs and rework.

Unlike other systems, Sliptrack allows installation without any extra accessories to hold the studs in place - fasteners that may be unintentionally left to interfere with the movement of the walls. Sliptrack Systems do not require any additional strapping, bridging, clips, or stand off washers that get in the way of a fast installation.

## For dealers, a product that sells itself

The simple design and installation advantages of Sliptrack make it a natural choice. Once installers try SLP-TRK®, they realize how much it cuts their labor costs and improves their profits, while helping them comply with code.

## For architects and structural engineers, top performance

Why specify SLP-TRK® slotted deflection track? It's simple: you can demand more performance from your head-of-wall system. Sliptrack's one-piece engineering means it can be manufactured at lighter gauges than double track systems. Yet Sliptrack can deliver greater load values with lighter gauges.

Sliptrack's single-track design allows positive attachment while still absorbing building movement. Sliptrack Systems is a registered provider for the AIA Continuing Education System - call us for double CES credits.

For complete detail drawings, CAD downloads, engineering values, and guide specifications, visit our website at [www.BradyInnovations.com](http://www.BradyInnovations.com).



*As architects, we specify Sliptrack because it takes the guesswork out of designing for complicated head-of-wall compliance issues. Sliptrack systems provides fire-rated design solutions in a variety of conditions. And it's compliant with the latest codes, with the ICBO and UL paperwork to back them up.*

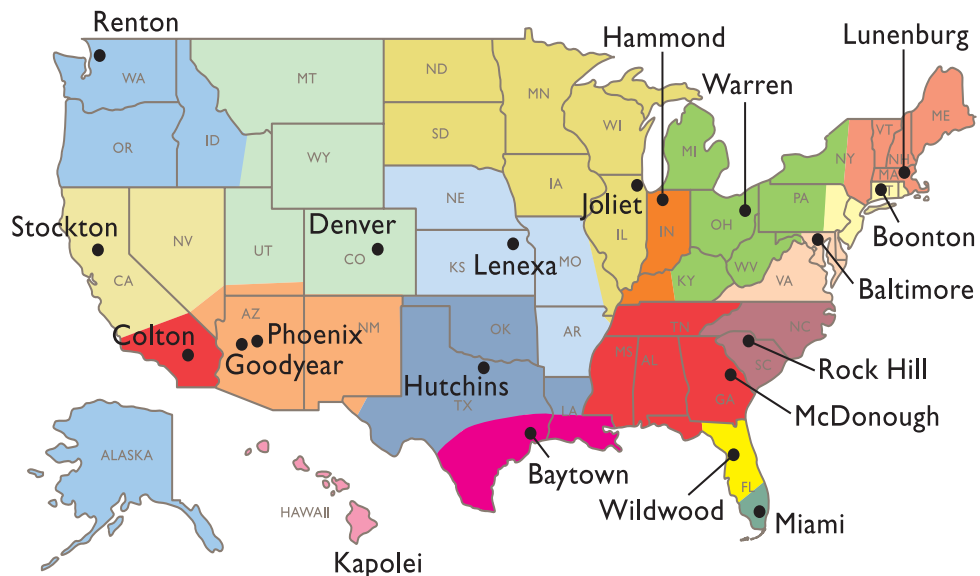


*From the dealer's perspective, Sliptrack is a great product. It's easy to stock and inventory, because there's no special ordering, unlike double track systems that require different leg lengths and OD/ID dimensions that always get mismatched and misplaced.*



*Major project managers select the best products to satisfy current code requirements, while ensuring a cost-effective installation. Sliptrack slotted deflection track is the product of choice at the top of walls.*

## Steel Manufacturing Plant Locations - Dietrich Metal Framing exclusive manufacturer of SLP-TRK®



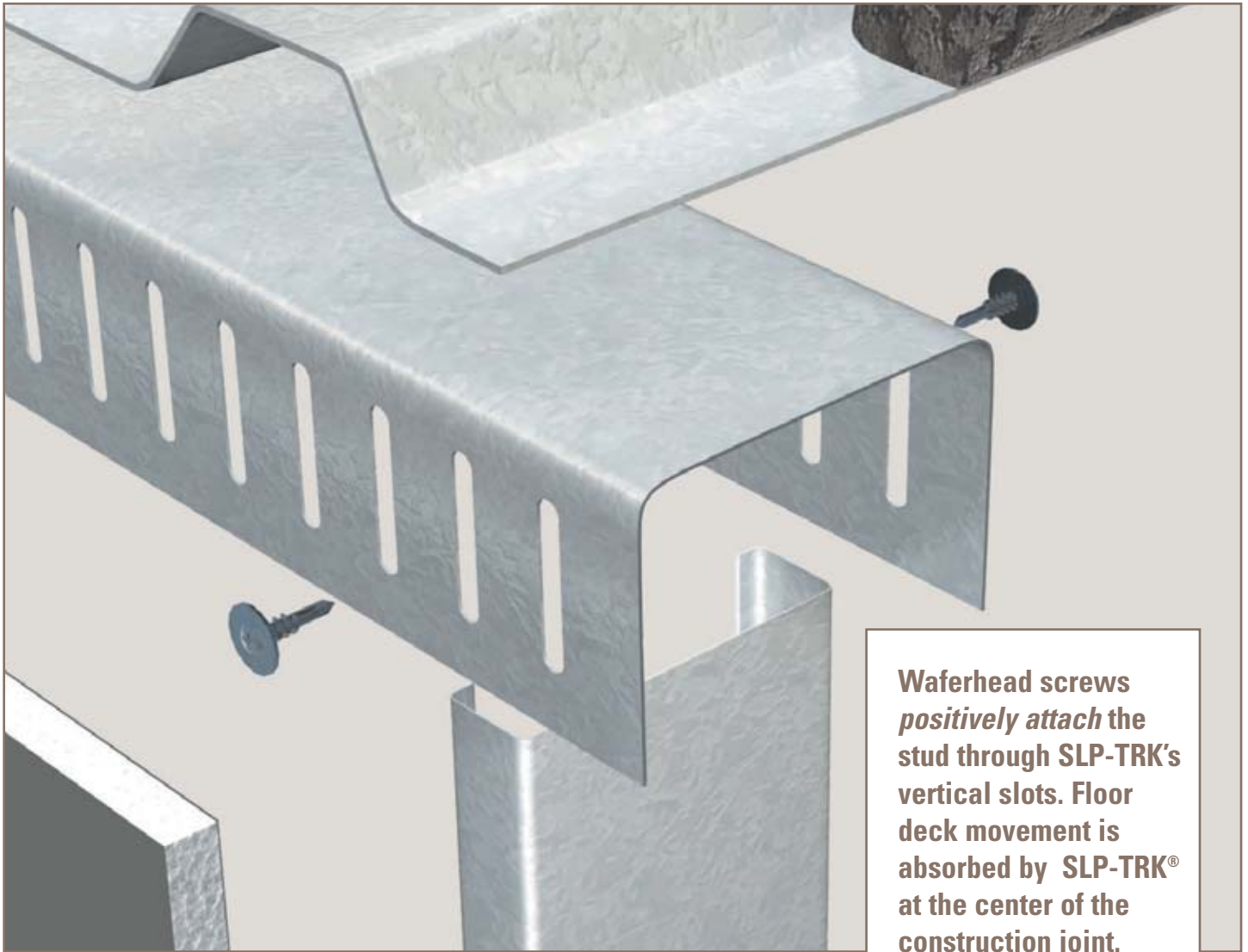
**Dietrich Metal Framing, Inc.**  
**Corporate Headquarters**

500 Grant Street/Suite 2226  
Pittsburgh, PA 15219

Phone: (412) 281-2805

E-mail: [Dietrichindustries.com](mailto:Dietrichindustries.com)

[www.sliptrack.com](http://www.sliptrack.com)



**Waferhead screws positively attach the stud through SLP-TRK's vertical slots. Floor deck movement is absorbed by SLP-TRK® at the center of the construction joint.**

## Whether you specify, sell or install head-of-wall joint systems, SLP-TRK® makes your life a lot easier.

Its a real challenge these days meeting head-of-wall codes for fire stop and life safety while maintaining the ability to absorb vertical movement in high rise buildings. SLP-TRK® is the solution.

### The SLP-TRK® advantage is in its simplicity

SLP-TRK® provides a *positive attachment* for wall strength and allows for vertical movement. Movement caused by normal head-of-wall and floor extension or compression is absorbed by SLP-TRK® to prevent damage to the wall system.

SLP-TRK® smoothly integrates with a variety of wall installation systems and is extremely user-friendly, as well as economical. The simple design and easy installation reduces the cost of materials and labor. And the installer can use

the head-of-wall systems he prefers to work with.

Sliptrack Systems complies with the toughest code requirements in the country, if not the world. It has been tested with a variety of leading fire-stop products, and has outperformed the requirements of stringent fire and hose stream testing ASTM E-119, ASTM E-814. Sliptrack also has met and exceeded the latest seismic cycling standards found in UL2079 and ASTM1966

### Meeting Code Requirements.

SLP-TRK® has achieved the following building code approvals:

- ICBO - ER 5344
- LA City RR25344
- UL Classified R19236
- OSHPD R#0371
- UL Certified for Canada XHL17
- NY City MEA 285-01-M

SLP-TRK® meets requirements of all standard building codes:

- BOCA
- ASTM
- IBC
- SBCCI
- UL2079
- UBC

Photographs below are head-of-wall joints using chemical fire-resistive sealants and are courtesy of Specified Technologies Inc.



Mineral Wool is placed in the fluted metal deck after the drywall is installed.



The deflection gap is filled with Mineral Wool.



The Head-of-wall construction joint is sprayed with the fire resistive sealant.

Shown at right are detailed drawings of other typical wall assemblies.

Sliptrack integrates easily with over 100 assembly designs using both fire-proofing products and chemical fire resistive sealants.

**Sliptrack Systems can be used for both interior and exterior wall systems. For exterior wall applications, visit our website at [www.BradyInnovations.com](http://www.BradyInnovations.com)**

### The SLP-TRK® Advantage

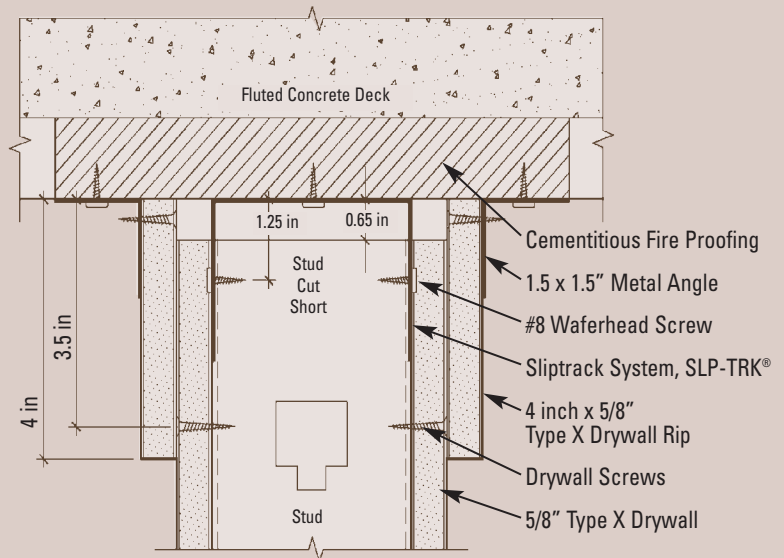
Sliptrack is produced from prime steel conforming to ASTM requirements.

Sliptrack's single track design allows for the use of lighter gauge steel to deliver higher engineering values which translates to cost savings.

Sliptrack's vertical slots and fastening system provides *positive attachment* while allowing vertical movement of 1 inch (plus and minus 1/2 inch).

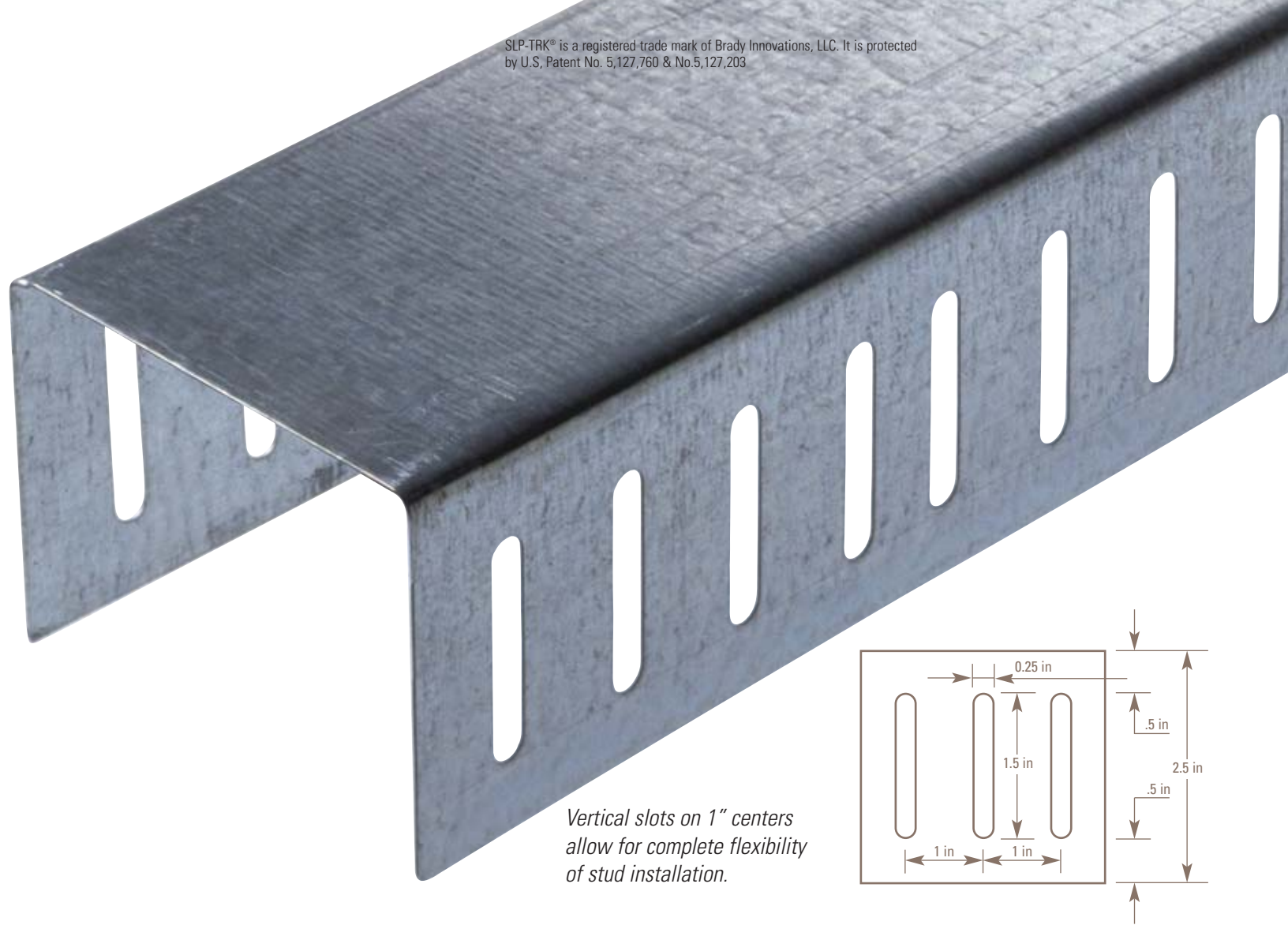


### Typical Wall Assembly Details

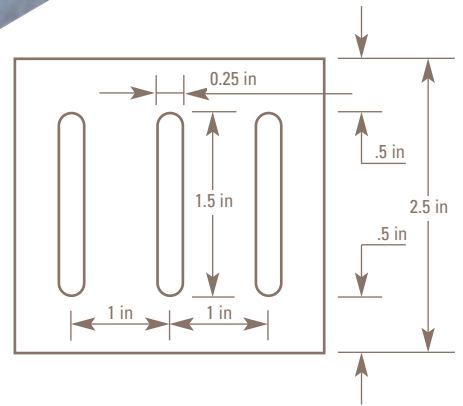


### Sliptrack System #3

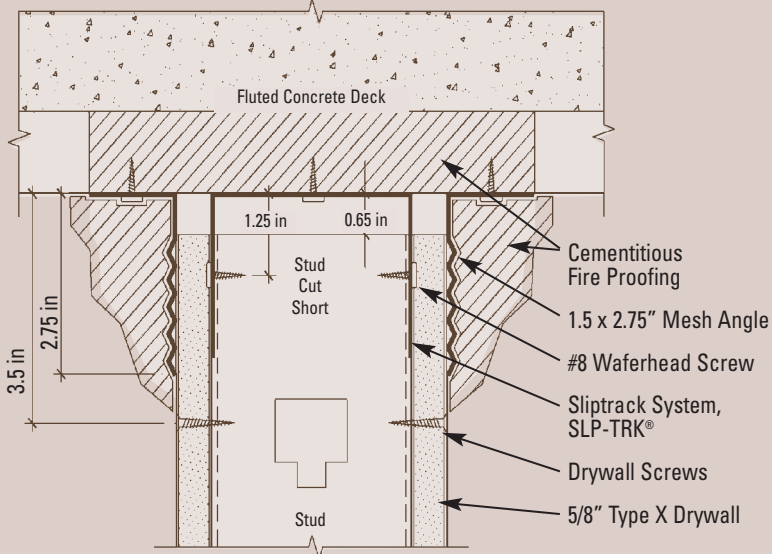
Cementitious fireproofing in deck flutes, deflection gap (unencumbered) covered with 4" drywall rip cut straight across the bottom of the flutes.



Vertical slots on 1" centers allow for complete flexibility of stud installation.

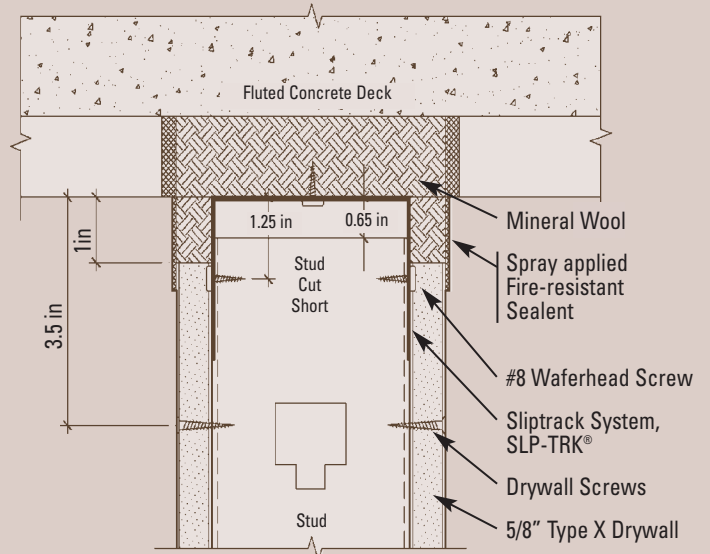


## Typical Wall Assembly Details



### Sliptrack System #6

Cementitious fireproofing in deck flutes, deflection gap (unencumbered) covered with cementitious fireproofing over mesh angle.



### Sliptrack System #7, 8, 9, 10, 11, 12, 13

Mineral wool in deck flutes, deflection gap (encumbered) filled with mineral wool and coated with spray applied fire-rated sealant. (See UL Fire Resistance Directory for system details)

# Sliptrack Systems ~ Fire-Rated Assemblies



**ICBO Approved Systems** ~ Tested and Listed with Intertek Testing Laboratories  
**ICBO ER-5344** ~ 1 and 2-Hour Designs ~ UL-2079 Test Standard Compliant

**UL Approved Systems** ~ Listing Partner and Design Number  
**UL Control 96GM** ~ 1 and 2-Hour Designs ~ UL-2079 Test Standard Compliant



<b>System 1 - 6</b>					
<b>System 1 - W.R. Grace</b>	<b>System 2 - W.R. Grace</b>	<b>System 3 - Isolatak</b>	<b>System 4 - Isolatak</b>	<b>System 5 - Isolatak</b>	<b>System 6 - W.R. Grace</b>
WHI-495-PSV-1201	WHI-495-PSV-1333	WHI-495-PSV-1333	WHI-495-PSV-1334	WHI-495-PSV-1333	WHI-495-PSV-1338
<b>System 7 - STI</b>					
UL-HW-D-0003	UL-HW-D-0034	UL-HW-D-0043	UL-HW-D-0044	UL-HW-D-0054	UL-HW-D-0079
UL-HW-D-0088	UL-HW-D-0099	UL-HW-D-0102	UL-HW-D-0136	UL-HW-D-0137	UL-HW-D-0152
UL-HW-D-0153	UL-HW-D-0194*	UL-HW-D-0210	UL-HW-D-0241	UL-HW-D-0242	UL-HW-D-0243
UL-HW-D-0260	UL-HW-D-0363	UL-HW-D-0365	UL-HW-D-0371		
<b>System 8 - PFPF</b>					
UL-HW-D-0024	UL-HW-D-0025	UL-HW-D-0036	UL-HW-D-0062	UL-HW-D-0063	UL-HW-D-0071
UL-HW-D-0072	UL-HW-D-0073	UL-HW-D-0162	UL-HW-D-0185	UL-HW-D-0191*	UL-HW-D-0271
UL-HW-D-0272	UL-HW-D-0263	UL-HW-D-0278			
<b>System 9 - 3M</b>					
UL-HW-D-0020	UL-HW-D-0021	UL-HW-D-0029	UL-HW-D-0031	UL-HW-D-0101	UL-HW-D-0111
UL-HW-D-0134	UL-HW-D-0170	UL-HW-D-0173	UL-HW-D-0205	UL-HW-D-0265	
<b>System 10 - HILTI</b>					
UL-HW-D-0042	UL-HW-D-0045	UL-HW-D-0046	UL-HW-D-0049	UL-HW-D-0076	UL-HW-D-0077
UL-HW-D-0082	UL-HW-D-0083	UL-HW-D-0084	UL-HW-D-0085	UL-HW-D-0087	UL-HW-D-0089
UL-HW-D-0106	UL-HW-D-0154	UL-HW-D-0184	UL-HW-D-0190	UL-HW-D-0218	UL-HW-D-0259
UL-HW-D-0313	UL-HW-D-0321	UL-HW-D-0322	UL-HW-D-0324		
<b>System 11 - Johns-Manville</b>					
UL-HW-D-0047	UL-HW-D-0048	UL-HW-D-0067	UL-HW-D-0068	UL-HW-D-0069	UL-HW-D-0167
UL-HW-D-0186	UL-HW-D-0193	UL-HW-D-0195	UL-HW-D-0275	UL-HW-D-0277	
<b>System 12 - Rectorseal</b>					
UL-HW-D-0032	UL-HW-D-0033	UL-HW-D-0058	UL-HW-D-0059	UL-HW-D-0104	UL-HW-D-0105
UL-HW-D-0127	UL-HW-D-0128	UL-HW-D-0129	UL-HW-D-0130	UL-HW-D-0179	UL-HW-D-0180
UL-HW-D-0221	UL-HW-D-0222	UL-HW-D-0297	UL-HW-D-0298		
<b>System 13 - GRACE-Flamesafe</b>					
UL-HW-D-0107	UL-HW-D-0108	UL-HW-D-0124	UL-HW-D-0144	UL-HW-D-0146	UL-HW-D-0147
UL-HW-D-0148	UL-HW-D-0165	UL-HW-D-0213	UL-HW-D-0217	UL-HW-D-0219	UL-HW-D-0257*
UL-HW-D-0299					
<b>System 14 - EGS-Nelson</b>					
UL-HW-D-0223	UL-HW-D-0224	UL-HW-D-0227	UL-HW-D-0228	UL-HW-D-0238	UL-HW-D-0239
UL-HW-D-0283	UL-HW-D-0288	UL-HW-D-0304	UL-HW-D-0305	UL-HW-D-0309	UL-HW-D-0310
<b>System 15 - Tremco</b>					
UL-HW-D-0016	UL-HW-D-0091	UL-HW-D-0255	UL-HW-D-0256	UL-HW-D-0291	
<b>System 16 - John Wagner Assoc.</b>					
UL-HW-D-0353	UL-HW-D-0356	UL-HW-D-0357	UL-HW-D-0358	UL-HW-D-0368	UL-HW-D-0370
<b>System 17 - A/D Fire-Protection System</b>					
UL-HW-D-0247	UL-HW-D-0249	UL-HW-D-0314	UL-HW-D-0315	UL-HW-D-0316	UL-HW-D-0317
UL-HW-D-0320					
<b>System 18 - OSI Sealants Inc.</b>			<b>System 19 - USG</b>		
UL-HW-D-0183	UL-HW-D-0341		UL-HW-D-0160		

\* Equals Shaftwall System

**ICBO ER-5344 - Table 2**

SLP-TRK TOP TRACK	MAXIMUM HEIGHT OF WALL IN FEET						ALLOWABLE LATERAL LOAD (pounds)
	Stud Spacing on Center						
	12 inches	16 inches	24 inches	12 inches	16 inches	24 inches	
Gage	Uniform Lateral Load			Uniform Lateral Load			
	5 psf			10 psf			
25 ga.	13.2	9.9		-	-	-	33
20 ga.	55.2	41.4	27.6	27.6	20.7	13.8	138
18 ga.	65.2	48.9	32.6	32.6	24.5	16.3	163
16 ga.	123.2	92.4	61.6	61.6	46.2	30.8	308

**Technical Engineering Services available:**  
 See distribution map for technical support information. For complete submittal packages contact Sliptrack Systems at: 888-4SLPTRK or visit us online.

**Product Specification: Standard Sizes and Gauges**  
 2 1/2" - 3 3/8" - 4" - 6" - 8" in 10 foot lengths  
 25 gauge, 20 gauge, 18 gauge, 16 gauge, 14 gauge