

every
moment
matters



COMPOSITION BOOK

SLPs and OTs Guide to Pearson 2020 Edition

If lost, please return to:



Free access to over 100 digital
manuals and stimulus books on
Q-global® extended until July 31.

Visit [PearsonAssessments.com/
Telepractice](https://www.pearsonassessments.com/telepractice) for more information
(Look for the **Q-global Resource
Library** at the top of the page)



Pearson



Greetings, fellow SLPs and OTs!

We are the SLPs and OTs of Pearson Clinical Assessment. We all love the science and data behind what we do, and delight in finding new ways of helping others in our profession — like you! We also care about getting things done the right way, in the least amount of time, all while having the best possible experience. In fact, we want absolutely nothing to take away from those clinical moments, ones where we work at our highest level of training with the students and clients we serve.

Since you likely know about most of our products already, you can use this planner to help guide you through the various toolkits available to you, find new ways to use them together, and discover resources designed to help you succeed.

In the end, we get it. It may be hard to figure out how to navigate to the solutions you need, so meet us on each page and let us guide you through next steps as we work together to reach your goals!

Cheers to THAT.

*The Speech and Language &
Occupational Therapy team*

Keep in touch with us on our social channels!



@PearsonAssessmentsUS



@PearsonAssessUS



@PearsonAssessmentsUS



@PearsonAssessmentsUS



There's more to explore on our website!

This guide highlights some of our most popular solutions, but be sure to check out our website for our complete product offering as well as more detailed information, including pricing.



Check out page 21 to learn more about our Solution Finder on our website.

Visit **PearsonAssessments.com**

for complete product details, pricing, sample reports, and much more.

Our Promise

We share your passion and the more we talk with you, the more we learn about the passion each of you has for improving lives—at the office, in your home, and in our communities. We're doing so much good together, and the ultimate rewards continue to be the success stories of the people we commonly serve. We've renewed our focus on getting to know you, and we want you to get to know us, too.



Watch “Our Promise” for a behind-the-scenes look at a few of our people, and get a sneak peek of what's in store for 2020! Visit **[PearsonAssessments.com/Promise](https://www.pearsonassessments.com/Promise)** or scan the QR code

Take a peek at our toolkits.

Explore the breadth and depth of our assessments.

There's plenty more to explore! Visit [PearsonAssessments.com](https://www.pearsonassessments.com) to see our full library.

iSi! indicates products with a Spanish option available.

Pg. 6, New for 2020!

Bayley™ -4
Bayley-4 Screening Test
CELF® Preschool-3
CELF Preschool-3 Screening Test
PEDI-CAT **iSi!**

Pg. 7, Autism Spectrum Disorders

Adolescent/Adult Sensory Profile
ASRS®
CARS2
CCC-2
GARS-3
PEDI-CAT **iSi!**
Sensory Profile™ 2 **iSi!**
Vineland™ -3 **iSi!**

Pg. 8-9, Early Childhood

Bayley-4
Bayley-4 Screening Test
Boehm™ -3 **iSi!**
Bridge of Vocabulary 2
CCC-2
CELF Preschool-3
CELF Preschool-3 Screening Test
PDMS-2
PEDI-CAT **iSi!**
PLS™ -5 **iSi!**
PLS-5 Screening Test **iSi!**
PPVT™ -5/EVT™ -3
Sensory Profile 2 **iSi!**

Pg. 10-11, K-12 School

ASA™
Beery™ VMI
BOT™ -2
BOT-2 Brief
Bridge of Vocabulary 2
CELF-5
CELF P-3
CELF Preschool-3
CELF Preschool-3 Screening Test
DASH/DASH 17+
GFTA™ -3 **iSi!**/KLPA™ -3
M-FUN
PEDI-CAT **iSi!**
PLS-5 **iSi!**
PLS-5 Screening Test **iSi!**
PPVT-5/EVT-3
Review360 for SLPs
SCAN-3: C
Sensory Profile 2 **iSi!**

Pg. 12, OT Digital Resources

Bayley-4
BMAT
BOT-2
PEDI-CAT **iSi!**
Sensory Profile 2 **iSi!**

Pg. 13, Tweens and Teens

Adolescent/Adult Sensory Profile
Beery VMI
Bridge of Vocabulary 2
BOT-2
CELF-5
CELF-5 Metalinguistics
GFTA-3 **iSi!**/KLPA-3
PEDI-CAT **iSi!**
PPVT-5/EVT-3
Sensory Profile 2 **iSi!**
TFLS

Pg. 14-15, Dyslexia

Berry-VMI Teaching Materials
CELF[®]-5
Intervention Guide for
LD Subtypes **iSi!**
KTEA[™] -3 Brief Form Dyslexia
Index Scores
Review360[®] for SLPs
SPELL-Links[™]
WIAT[®]-4
WRMT[™] -III

Pg. 16-17, Adult Assessments

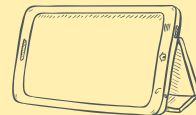
Adolescent/Adult Sensory Profile
AM-PAC[®]
BCSE
BMAT[™]
BMAT Short Form
CLQT+ **iSi!**
D-KEFS[™]
TFLS
Raven's[®]-2
RBANS[®] Update
RehaCom[®]
Vineland[™]-3 **iSi!**
WAB[™] -R

Pg. 18-19, Telepractice

Bridge of Vocabulary 2
Brown EF/A Scales[™]
CELF[®]-5
CELF-5 Metalinguistics
D-REF
GFTA-3 **iSi!**/KLPA[™] -3
PEDI-CAT **iSi!**
PPVT-5/EVT-3
Sensory Profile 2 **iSi!**
Shaywitz DyslexiaScreen[™]
SPELL-Links
Vineland-3 **iSi!**

Pg. 20, Digital Platforms

Q-global[®]
Q-interactive[®]



Pg. 21, Solution Finder
Pg. 22-23, Ordering

What's new and upcoming for you!



Meet **Shannon** SLP & Sr. Research Director

I immigrated from Taiwan at age 5 and started kindergarten in the U.S. As an ELL, the first few months were overwhelming. Despite my tears of frustration, I soon learned that language is power. It allows needs to be met, friendships to be built, and knowledge to be gained. I'm proud to have participated in the development of Bayley-4 and CELF Preschool-3. While not designed for ELLs, these products may help kids with language impairments receive needed services, so that they, too, can know language is power.



Now available!

Use the Bayley-4 to assess development in children ages 16 days to 42 months across five scales: Cognitive, Language, Motor, Social-Emotional, and Adaptive Behavior.



Coming this summer!

Assess aspects of language necessary for preschool children to be successful in the classroom with the CELF Preschool-3 Test. Plus, the CELF Preschool-3 Screening Test will launch this summer!



Now available!

Use PEDI-CAT's computer adaptive caregiver-report to measure Daily Activities, Mobility, Social/Cognitive, and Responsibility in children and youth with a variety of physical and/or behavioral conditions.



Now available!

Administer this patient-reported assessment of daily activities, mobility, and cognition for the adult population.

Learn more at [PearsonAssessments.com/New](https://www.pearsonassessments.com/new)

See what's in our autism toolkit...



Meet **Patricia**
SLP & Research Director

Creating new tools that allow clinicians to accurately diagnose disorders and plan appropriate interventions is what motivates me to come to work every day. While I no longer work with clients and families directly, I hope that I am able to make a difference by developing reliable and valid assessments so that clinicians can continue to change the world one person — one family — at a time.

Tools to support social communication needs

Tests like **Sensory Profile 2** identify how sensory processing may be interfering with a child's participation in different settings, giving many caregivers that "Aha" moment.

A new assessment, **PEDI-CAT**, helps caregivers assign a difficulty rating on aspects of everyday life, as well as rate how much support the caregiver provides to a child with social communication needs.

Tools to support children & adults with Autism Spectrum Disorders

- Adolescent/Adult Sensory Profile
- ASRS
- CARS2
- CCC-2
- GARS 3
- PEDI-CAT **New!**
- Sensory Profile 2
- Vineland-3

My Notes:

Get full details on our SLP and OT solutions at **PearsonAssessments.com**

Work with babies & tiny tots?



Meet **Shelley**
OT & Sr. Product Manager

Pearson's early intervention tools have been a big part of my personal life. As a mother of a daughter with complex needs, the Bayley-III was one of the first assessments used to help her qualify for the necessary services at an early age. It didn't feel like an assessment, but more like quality play time with my child and a clinician. It made for a positive experience at a challenging time.

Take a deeper dive into our world of early intervention tools!

Pearson's early childhood tools help so many families on this journey. A typical example, similar to my own experience, might include:

- 1: A screening assessment using the **Bayley-4**, **CELF Preschool-3**, or the **Short Sensory Profile**
- 2: A remote questionnaire sent to the caregiver to be completed prior to an appointment (for example the **Sensory Profile 2** and the **PEDI-CAT**)
- 3: An in-person assessment using a full **Bayley-4**, providing a chance for the clinician and caregiver to explore "together" what the child can do
- 4: An in-person assessment exploring language development using the **PLS-5** and/or the **PPVT-5** and **EVT-3**
- 5: Intervention sessions based on information provided during the assessments
- 6: Progress monitoring using measures built right into many of our tools

The information gathered in steps 1–6 can help determine school placement and ensure the right services are in place from the start. In my situation, the continuity of many of these tools through the school years has helped reduce unnecessary assessments and streamlined developmental and educational monitoring.



Learn more at [PearsonAssessments.com/EarlyChildhood](https://www.pearsonassessments.com/EarlyChildhood)

--- Early Childhood Toolkit for SLPs & OTs

Screen

Bayley-4 Screening Test
 CELF Preschool-3 Screening Test
 PLS-5 Screening Test
 CCC-2
 PEDI-CAT

Assess

Bayley-4
 CELF Preschool-3
 PLS-5
 PPVT-5/EVT-3
 PEDI-CAT
 Sensory Profile 2
 PDMS-2
 BOEHM-3

Intervene

Bridge of Vocabulary 2
 Sensory Profile 2

Monitor

PEDI-CAT
 Bayley-4
 PPVT-5/EVT-3



My Early Childhood to-do list:

- Enjoy a smoothie while reading a journal article. Amazing x2!
- Think of something that made me smile today :-)
- Look after my body, especially when on the floor with little ones
- Connect with colleagues and share case reviews

My Notes:



School-based SLP or OT?



Meet **Nancy**
SLP & Sr. Product Manager

Thinking about the students and families I've worked with (and growing up with a brother with autism) keeps me motivated. My objective has always been to go beyond the dreaded "standardized test" and plan therapy goals that address family and teacher concerns in ways that have immediate impact on students' everyday lives.

Screen



Assess



Intervene



Monitor



Tools for every age and stage!

SLPs, need to evaluate language skills? Screen little ones with **CELF Preschool-3 Screening Test** or **PLS-5 Screening Tests** (English or Spanish). For older students, try **PPVT-5/EVT-3** for vocabulary skills or **CELF-5 Screening**. Follow up with **PLS-5** and **CELF Preschool-3** for in-depth assessment of your preK kids, and **CELF-5** for the K-12 crowd. To evaluate articulation and phonological processes, rely on **GFTA-3**, **KLPA-3** or **GFTA-3 Spanish!**

OTs, we offer tools for sensory, motor, and beyond! Examine motor function and participation with **M-FUN**. Serving the K-12 group? Use **BOT-2** to measure gross and fine motor skills. **Beery VMI** is the go-to-tool to examine integration of their visual and motor abilities.

OTs & SLPs, for students on the autism spectrum, and those with multiple disabilities or sensory needs use **Sensory Profile 2** to understand their sensory preferences and plan strategies to support participation. Use **PEDI-CAT** to examine daily living, mobility, social/cognitive and responsibility.

Need help making choices based on the unique needs of your students? Reach out to us and we will happily guide you to the right solution!

Explore more at [PearsonAssessments.com](https://www.pearsonassessments.com)

School Toolkit for SLPs & OTs

Screen

PEDI-CAT
 CELF Preschool-3
 Screening Test
 ASA
 BOT-2 Brief
 Sensory Profile-2
 Short Form

Assess

PPVT-5/EVT-3
 CELF-5
 CELF Preschool-3
 GFTA-3/KLPA-3
 M-FUN
 BOT-2
 SCAN-3:C
 Beery VMI
 DASH/DASH 17+

Intervene

Sensory Profile 2
 Bridge of
 Vocabulary 2
 Beery VMI

Monitor

PEDI-CAT
 PPVT-5/EVT-3
 Bridge of
 Vocabulary 2
 Review360 for SLPs



My School to-do list:

- Gather teammates to pitch new ideas to administration
- Ask my PTA/PTO for a little funding and volunteer support to try out a new idea
- Take an after-school walk

My Notes:



Get digital resources at your fingertips.



Meet **Susan**
OT & Research Director

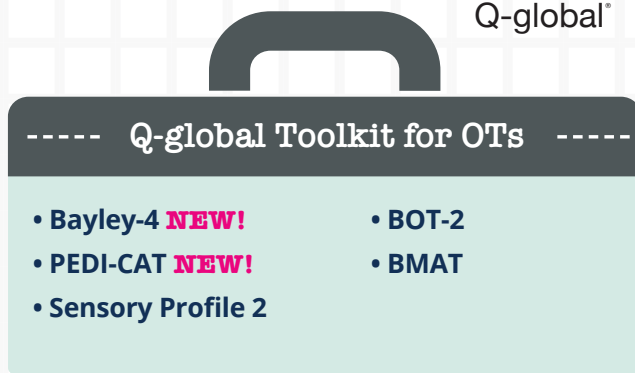
I knew I wanted to become an occupational therapist by the time I was a senior in high school. My passion to engage with people of differing abilities was clear to all who knew me. While working as an OT, I enjoyed the opportunities to interact with individuals across the entire lifespan and the families who loved them. I feel fortunate to have had 20+ years as a practitioner before joining Pearson!

Look no further! Q-global may be just what you need!

As an OT, you're on the move from one client to the next while trying to squeeze in your admin (and possibly a minute to eat). I wish I had Q-global sooner. Its web-based system for test administration, scoring, and reporting could have saved me countless hours. Now that I have Q-global, I LOVE using it.

Benefits of Q-global include:

- Immediate report generation
- On-the-fly assessment selection
- Reduced caregiver financial and time burdens



Get acquainted with Q-global at [PearsonAssessments.com/Q-global](https://www.pearsonassessments.com/q-global)

No longer a child. Not quite an adult.



Meet **Jan**

SLP & Director of Project Management

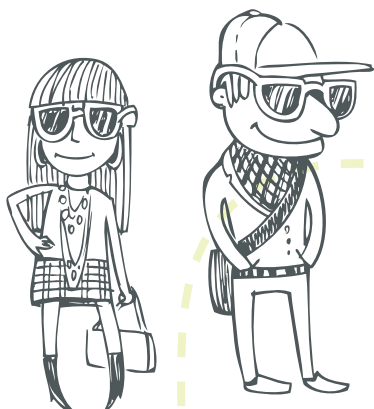
When I was a practicing SLP, assessments were crucial to my ability to plan and implement effective treatments for my students and clients. The work I do now enables Pearson to continue providing high-quality assessments for SLPs and OTs to use, and I'm energized by the people I work with in test development and by the customer response to our assessments.

We've got the tools you need to help kids in that "in-between" phase.

Of all the age groups, tweens and teens can be the most challenging. They're in that "in-between" phase where they're not children anymore (as they like to remind us), but they're not quite adults. It is a pivotal time for developing life skills and problem-solving skills, and an opportunity for us to support them.

- *What skills do they need to get through school?*
- *What skills and strategies can I equip them, their families, and school with to help navigate the future years?*

The answers to these and many of the other questions you may have can be found in our "Tweens and Teens Solutions Toolkit" — some of which we have highlighted here for you.



Tweens & Teens Toolkit for SLPs & OTs

- TFLS
- Bridge of Vocabulary 2
- PPVT-5/EVT-3
- GFTA-3/KLPA-3
- CELF-5
- CELF-5 Metalinguistics
- PEDI-CAT
- Sensory Profile 2
- Adolescent/Adult Sensory Profile
- BOT-2
- Beery VMI

Work with individuals at risk for dyslexia and other reading/writing challenges?



Meet **Tina**

SLP & Sr. Product Manager

My clinical career started in acute care neuro and trauma, then I had four kids (one with epilepsy) and earned a front-row seat watching their brains tackle oral and written language. This mash-up of my two worlds, the groundswell of awareness in dyslexia, and finding examples of exceptional team-based success around the country get me out of bed every morning.

Screen



Assess



Intervene



Monitor



Let's collaborate across disciplines and make measurable changes!

When identifying dyslexia and other written language disorders, SLPs and OTs have so much to offer the team.

- 1. We're trained to screen:** We know how to "take a quick look" with the **Shaywitz DyslexiaScreen** or the **KTEA-3** Dyslexia Index Scores.
- 2. We're trained to assess:** Our "eagle eyes" get to the bottom of what's happening and why. We cast a wide net with different assessments, for instance using **CELF-5** with the new written language measures of the **WIAT®-4**.
- 3. We're trained to intervene:** For most of us, interventions make up the bulk of our day. We can plan interventions based on screening and assessment results, and teach core skills in written language. Great ones include **Beery-VMI Teaching Materials**, **Bridge of Vocabulary 2** and **SPELL-Links**.
- 4. We're trained to show progress:** Tools like **Review360 for SLPs** are a great way to simplify and streamline data gathering. *We'd love to hear how you make it easier!*

Learn more at [PearsonAssessments.com/Dyslexia](https://www.pearsonassessments.com/dyslexia)

Dyslexia Toolkit for SLPs & OTs

Screen

Shaywitz
DyslexiaScreen
KTEA-3
Brief Form
Dyslexia index
scores from the
KTEA-3 and/or
WIAT-III

Assess

CELF-5
WIAT-4
WRMT-III

Intervene

SPELL-Links to
Reading and Writing
(SPELL-Links)
Intervention Guide
for LD Subtypes*
Bridge of
Vocabulary 2
Beery-VMI Teaching
Materials

Monitor

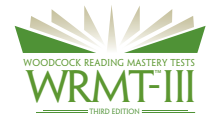
Review360
for SLPs

*Included in Q-global as part of a CELF-5, KTEA-3, or WIAT-III subscription



Coming soon!

SPELL-Links[™]
to Reading & Writing



My dyslexia team to-do list:

- Set up a meeting with the SLP, school psych, special ed teacher, and reading specialist
- Read Pearson's flyer about dyslexia and ELLs online
- Take a look at Pearson's Writing Tools flyer online
- Fold laundry while listening to Emily Hanford's "Hard Words" podcast

My Notes:

Working with adults?



Meet **Jessi** SLP & Assessment Representative

Working with the adult population has given me a backstage pass to witnessing our assessments guiding effective, evidence-based treatment and intervention for various diagnoses. From hearing someone say “I love you” for the first time since their stroke, to seeing someone problem-solve everyday issues in order to earn their discharge home brings me such joy.

We’ve got a vast toolkit of invaluable solutions!

When I worked in a clinical setting, full of reimbursement issues and organizational constraints, I had three goals:

- 1. Get the most valid and reliable information in the least amount of time*
- 2. Use assessments that guide me in intervention planning and progress monitoring*
- 3. Make the results easy to share with the patient/family and easily integrated with the rest of the care team’s results*

Now that I’m at Pearson, those three goals still frame my thinking.

Want a comprehensive, but fast assessment? Look to **CLQT+**. Need a functional assessment of everyday “adulting” skills? The **Texas Functional Living Scale** is a good choice. Struggling to differentiate aphasia subtypes (grad school was SO long ago)? The **WAB-R** will not let you down!

How about a structured interview form for adaptive behavior? Start with **Vineland-3!** The ever-present need to assess executive functions — digitally or in print? **D-KEFS** or **RBANS Update**. Finally, need an intervention that can be done independently during “down time”, either at home or in the hospital? **RehaCom** is a solid choice!

Tool choice is everything, and what I like about what we have within Pearson is the breadth and depth of the ones I truly need.

Explore more at [PearsonAssessments.com](https://www.pearsonassessments.com)

Adult Toolkit for SLPs & OTs

Screen

BCSE
AM-PAC
BMAT Short Form

Assess

WAB-R
CLQT+
TFLS
RBANS Update
D-KEFS
Vineland-3
BMAT
Raven's 2
Adolescent/Adult
Sensory Profile

Intervene

RehaCom
Adolescent/Adult
Sensory Profile

Monitor

AM-PAC
RehaCom
RBANS Update
Vineland-3
BMAT



My Adult to-do list:

- Monitor my compassion fatigue!
- Answer an ongoing clinical question with my own records review research.
- Calculate my PD needs
- Call a meeting to stay up-to-date on reimbursement changes. (Don't forget the coffee!)



My Notes:

Telepractice for the win!

Telepractice success tips

Telepractice *electronically links* you to your client for assessment, intervention, and/or consultation purposes. This method enables you to provide services that individuals in rural and underserved areas might not have access to otherwise, and alleviates caregiver burden.



Before the session

- Adhere to your state's licensure laws.
- Familiarize yourself with the platform.
- Get to know the assessment's tasks.
- Identify and address potential distractions.

During the session

- Position the camera so you can see the client's entire face.
- Ensure the examinee's mic is positioned so you can see their mouth clearly.
- Ensure the correct digital stimulus book page is displayed.
- Discontinue testing if the audio/video quality is poor or the client becomes distracted.

After the session

- Include in your test report that the test was administered via telepractice.

Learn more at [PearsonAssessments.com/Telepractice](https://www.pearsonassessments.com/telepractice)

Did you know that **Q-global**[®], Pearson's web-based system for test administration, scoring, and reporting offers digital editions of many of our most popular assessments? Pearson is constantly working to expand digital product offerings that can support you in your practice. Here's what's available!



Looking for more training and professional development?

On-site and web-based workshops

Presented by national industry experts, test authors, or Pearson on-staff consultants, our workshops provide training for psychologists, counselors, social workers, OTs, SLPs, and other staff.

Webinars & on-demand learning

Complimentary and paid sessions are available live and on-demand, allowing you to learn when it's convenient for you.

**PearsonAssessments.com/
Webinars**

Learn more at **PearsonAssessments.com/
Training**

Q-interactive? Q-global? Both?



Meet **Kristen**
SLP & Research Director-Digital Platforms

Previously I worked as an SLP in a school district where I experienced many of the issues that plague our customers. I struggled with large caseloads, parents and students skeptical of the testing process, and not enough time in my day. Now, I work with our software team to ensure our tests are more engaging, efficient, and informative, which make for a better experience for you and your clients!



Q-interactive®



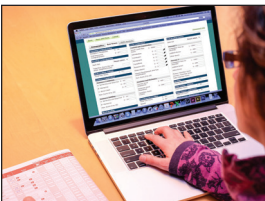
Q-global™

As an SLP or OT, see which system is right for you!



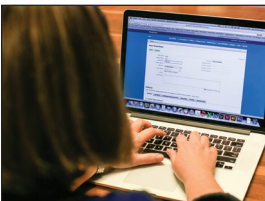
I want to administer and score individual assessments (PPVT-5) using two tablets.

***Q-interactive** allows you to administer 1-1 tests using two iPad® devices. All of your data is backed up to a website, where you can generate score reports and view digital records of your raw data.*



I want to administer a test in paper (CELF-5, BOT-2) then digitally score and report.

***Q-global** provides an online platform for real-time scoring and reporting of paper kits.*



I want to administer and score rating scales, questionnaires, or inventories (Bayley-4, PEDI-CAT, Sensory Profile-2) online.

***Q-global's** remote on-screen administration allows the assessment to be administered via any web-enabled device. A respondent can access the assessment from their own web-enabled device through a secure URL delivered via email. Tests administered via paper can be scored using Q-global.*

Learn more at [PearsonAssessments.com/Digital](https://www.pearsonassessments.com/digital)

Finding the right products has never been easier!

We know you don't always have time to explore all the different assessments that are available. The Solution Finder on our website allows you to quickly find the products you are interested in. Products are listed by specialty area and then you can filter products by additional categories.

HERE'S HOW IT WORKS

At [PearsonAssessments.com/SolutionFinder](https://www.pearsonassessments.com/SolutionFinder) you will see a number of different types of assessments.

Academic Learning

Test academic skills, reading readiness, oral reading, language comprehension, math skills, and other basic skills.

Behavior

Identify emotional and behavioral issues and effectively plan and monitor interventions.

Career Planning

Tools to help align interests and skills with career options.

Cognition / Neuro

Assess dimensions of ability, including cognition and intelligence, reasoning, and more.

Developmental / Early Childhood

Discover a range of developmental, social, behavioral, and academic skills in the children you serve.

Motor / Sensory

Evaluate a child's motor development and sensory processing patterns in the context of their everyday life.

Personality & Biopsychosocial

Look for biological, psychological, and social factors that can impact client health.

MTSS/RTI/PBIS Benchmarking

Identify students at risk, pinpoint strengths, implement interventions, and monitor progress.

Speech & Language

Screen, assess, and monitor progress for speech and language concerns in any setting, including school, clinical, and rehabilitation.

SHOW RESULTS FOR

Category

Adaptive (9)

Attention ADHD (11)

Autism (11)

Brief (6)

Comprehensive (7)

Executive Function (4)

Interventions (9)

Social-Emotional (23)

REFINE BY

Once you select a topic, use the filters on the left to sort the products you are interested in by what they measure, age range, language, and more. Relevant products are then listed alphabetically for you to browse.

We offer many more assessments than can fit in this guide, but you can find them easily on our website or scan the QR code today to start exploring!



Visit [PearsonAssessments.com/SolutionFinder](https://www.pearsonassessments.com/SolutionFinder)

Easy ways to order



Web

The quickest way to order is via our website at
PearsonAssessments.com



Phone

+1 (800)-627-7271



Fax

+1 (800)-232-1223

Prior to faxing, review the fax order checklist at:

PearsonAssessments.com/Fax



Purchase orders

*Customers purchasing on behalf of an organization with an established account may utilize purchase orders in the website checkout as well as by web form or fax. Learn more: **PearsonAssessments.com/PO***

Questions about ordering?

We've got you covered. Visit **PearsonAssessments.com/Ordering** for helpful hints on:

- Account creation
- Qualifications
- Manual ordering
- Purchase orders
- Mail-in scoring



Product platform login

For customers who have purchased Pearson products that have an online platform for assessment administration/scoring, you can find links to all platform login pages at:

**PearsonAssessments.com/
Product-logins**



Things to remember!

Jot down your organization ID number so it's saved. You can find this listed as "Customer Account" on a past invoice.

Save your Q-global account number. Log into Q-global, then access My Account > Account Information. The inventory account number is your Q-global number.

Top products to find on the web:



Work in healthcare or education? Take a look at our other 2020 guides at [PearsonAssessments.com/2020Guide](https://www.pearsonassessments.com/2020Guide)

"iPad" is a registered trademarks of Apple Inc. registered in the U.S. and other countries. "ASRS" and "Autism Spectrum Rating Scales" are trademarks of Multi-Health Systems Inc. "Beery" is a trademark of Keith E. Beery and Natasha A. Beery. "PPVT" is a trademark of Wascana Limited Partnership. "RehaCom" is a registered trademark of HASOMED GmbH, a German company. Pearson Clinical Assessment, a business unit of NCS Pearson, Inc., is the authorized distributor of RehaCom within the United States. "SPELL-Links", "SPELL-Links to Reading & Writing" and "Class Links for Classroom" are trademarks of Learning By Design, Inc.

© 2020 All Rights reserved. Pearson and Always Learning are trademarks in the U.S. and/or other countries, of Pearson Education, plc. CLINA15778-22644 ML 01/20

--- Explore our SLP & OT toolkits inside! ---

What do you need for 2020?
See what's new and coming soon!



Scales of Infant and
Toddler Development™
Fourth Edition

