



**SMART
DIGITAL
DENTISTRY**





Armand STEMMER - dental surgeon, founder of the LYRA group.

**YOUR PARTNER
SINCE 1992**

04

**NEXT
GENERATION OF CARE**

08

06

EXPERT INTEGRATION

10

**QUALITY
AND RELIABILITY**

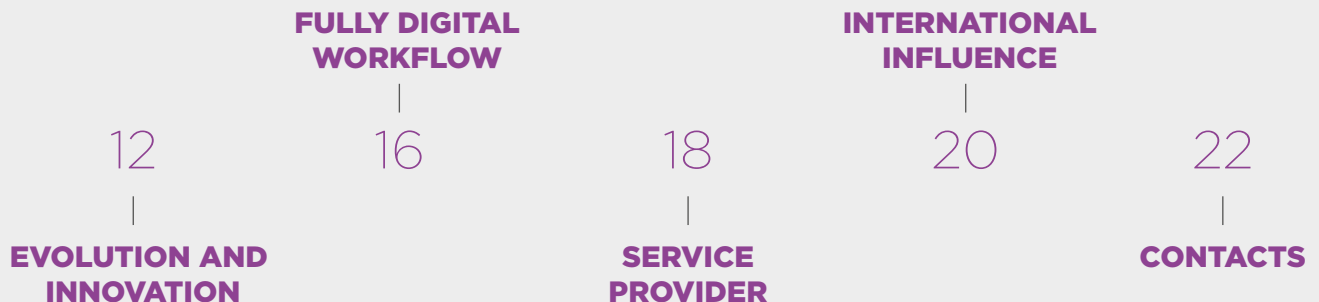
MISSION AND VALUES



Michaël OHANA - CEO

Your profession, our passion: driving digital migration in dental practice, LYRA coordinates each step, keeping patient-centred care at the heart of its proposals. **INNOVATION** is deeply rooted in the group's strategy. LYRA offers advanced care to benefit clinicians and patients alike, and develops streamlined, **SIMPLIFIED** and thus more **ACCESSIBLE** procedures, thanks to a fully integrated digital chain. With its etk brand making it a major player in implant dentistry, LYRA commits to supplying tailored **SERVICES** and support, and uses a comprehensive, modern vision to develop your dental practice.

Enjoy digital!



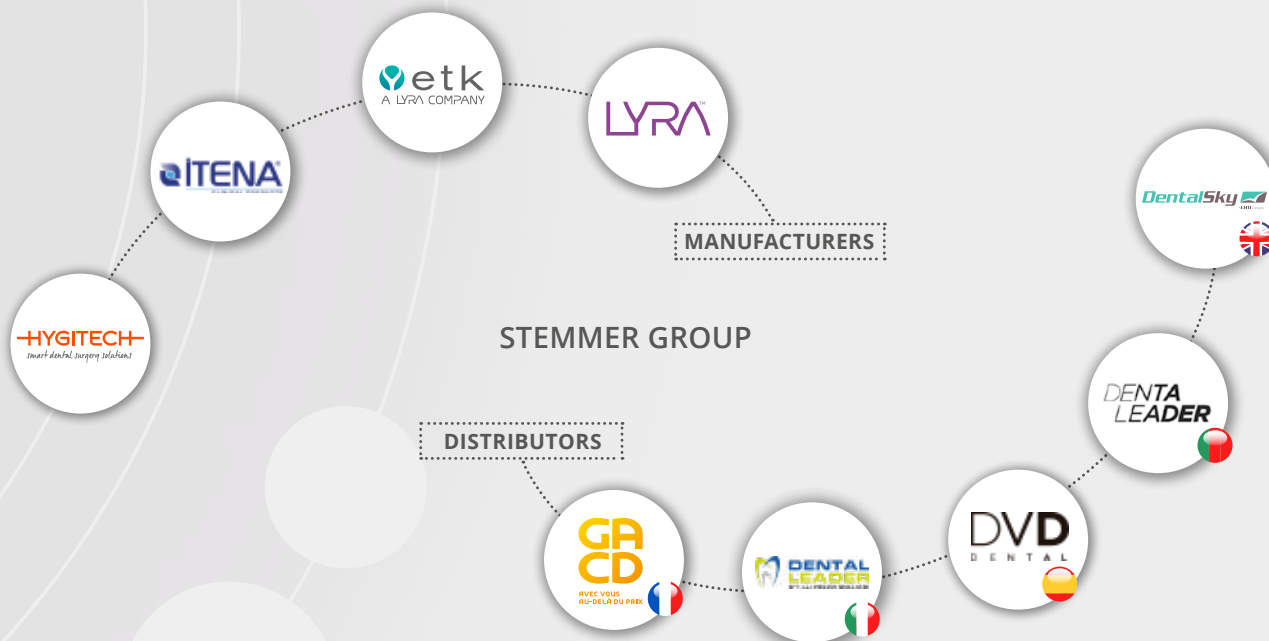


YOUR PARTNER SINCE 1992

Time to build renowned dental expertise

ARMAND STEMMER, DENTAL VISIONARY

A visionary in the field of dentistry, Armand STEMMER founded his first company in 1980, and became a genuine pioneer in accessible dentistry. The leading dental distributor in France, the group is moving into the European market, and integrating its production companies, particularly in implant dentistry.



1992 | etk (euroteknika), dental implant manufacturer, established in Paris by Dr Guy HURE

2004 | etk acquired by the Stemmer Group

2006 | Production line integration. Production site built in Sallanches, Haute-Savoie

2011 | CAD-CAM and guided surgery solutions developed

2013 | LYRA, digital equipment and solutions service provider, established

2014 | LYRA Mill machine launched

2016 | etk and LYRA merger

2016 | iphysio®, a revolutionary implant dentistry product with 9 patents, launched





EXPERT INTEGRATION

**An ecosystem of manufacturers and specific service providers,
to offer you the best digital solutions.**

SUPPLIER OF COMPREHENSIVE DIGITAL DENTISTRY SOLUTIONS

LYRA™

State-of-the-art digital scanning equipment and software solutions.



etk
A LYRA COMPANY

Manufacturer of a complete range of implants with integrated CAD-CAM. Innovative products, using next-generation materials. 25 years of clinical experience in surface finish.



3shape

Partner in manufacturing market-leading scanning equipment and software.



LYRA
ECOSYSTEM

Evolyou

VCPD certified training body, incorporating a broad range of training options, eligible for OPCO* funding.

*France



Bridge

Professional communication platform enabling fast, fluid discussion between dentists/ dental technicians.



Iphysio® ready digital laboratories.



NEXT GENERATION OF CARE

Contribute to better public health.

DIGITAL TECHNOLOGY, AT THE SERVICE OF PATIENTS

In addition to designing, screening and validating digital solutions, LYRA works on the user experience, to facilitate implementation of all the devices that make up the digital chain specific to each individual clinician. Combining products and services (management platform, remote design, availability of certified laboratories, etc.), LYRA ensures smooth, effective treatment.

This leads to unique, easy-to-implement treatment protocols, such as:

- **fully digital implant dentistry**
- **direct or INDIRECT CAD-CAM onlays**



Using digital technology, LYRA strives for increased comfort, through shorter, more conservative, more accurate and more reliable treatment, offering a more attractive, modern dental practice.

IMPLANT DENTISTRY

PROSTHETICS

ORTHODONTICS





QUALITY AND RELIABILITY

Providing peace and confidence at every step of your treatment.

STRONG PARTNERSHIPS WITH THE MARKET LEADERS IN DIGITAL EQUIPMENT

LYRA surrounds itself with the best industry partners to drive progress in dental practice and laboratories, by screening and incorporating state-of-the-art digital technology

CLINICAL EXPERIENCE

With more than 27 years of clinical experience, LYRA-etk works closely with universities and independent research centres to study, monitor and validate new solutions, research and publications.

MADE IN FRANCE

etk is based in the Arve Valley, European capital of the micromachanic industry. Production is 100% French.



THE etk GUARANTEE®

Implants: lifetime guarantee*

Prostheses: 10 years

*use of etk components only for the entire duration of treatment, only if all conditions for implant treatment are fulfilled.



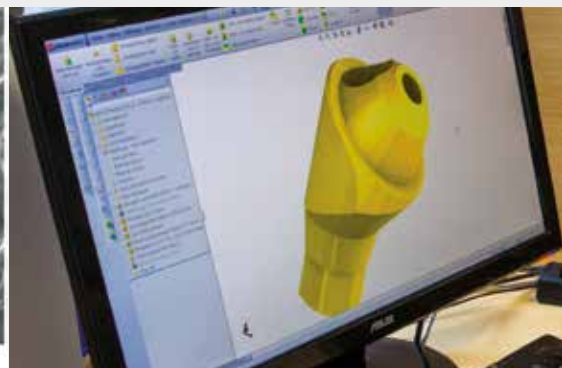
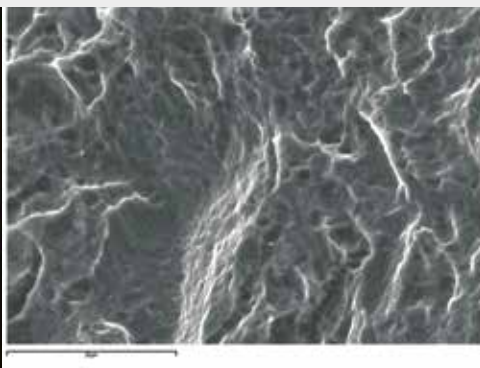
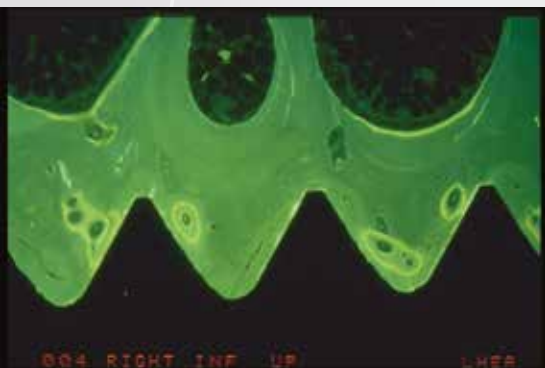
EVOLUTION AND INNOVATION

**Providing simplicity and ease-of-use, allowing you to focus
on what matters: patients.**

RESEARCH AND DEVELOPMENT

LYRA pays particular attention to research and development, a major aspect of its growth and competitiveness. The “Research and Development” department provides clinical and technological monitoring, and conducts innovative research in the fields of implant dentistry and new solutions in digital dentistry.

Its primary activities involve designing implant systems, as well as integrating our partners’ equipment and software to create effective, high-performance workflows for our clients. LYRA pays close attention to innovation, and protecting its intellectual property, and the R&D department oversees this policy, while upholding a dynamic of innovation and new patent submissions.



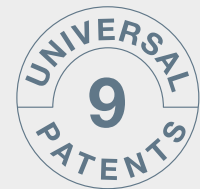
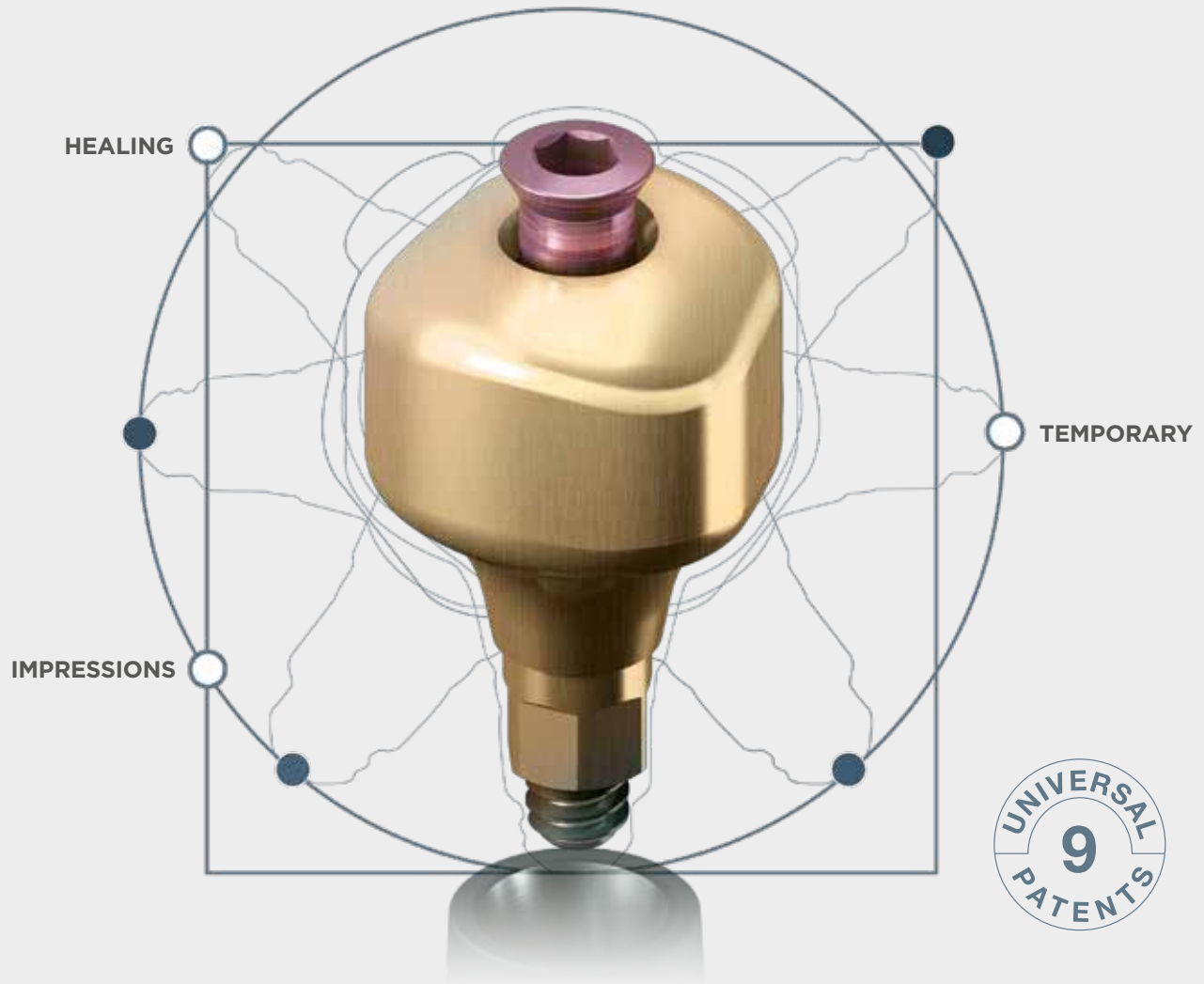
GROUP ACTIS

A group of passionate implantologists who form the LYRA-etk scientific committee. It works to develop new solutions, and in close collaboration with the R&D teams.

iphysio[®], PATENTED PROTOCOL

3 in 1 solution with only one product.

PROFILE DESIGNER
iphysio[®]



3-in-1 Solution

The iphysio® Profile Designer remains in place for the duration of bone and gingival healing, it then becomes an impression coping or scan body. It is only removed once, when you place the final restoration.

4 shapes, for an anatomical emergence profile

The iphysio® Profile Designer offers truly anatomical emergence profiles, ensuring sufficient soft tissue thickness. It ensures a progressive, natural and aesthetic transition between the round part of the implant and tooth emergence.

Universal

The iphysio® Profile Designer is compatible with the major implant brands.



The iphysio® Profile Designer during the gingival healing phase, with a view to premolar and molar restoration



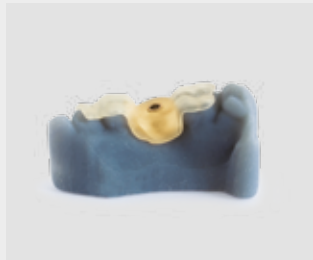
Anatomical molar prosthetic cradle after healing with the iphysio® Profile Designer

SURGICAL GUIDE

LYRA Guide surgical guide planning and printing platform (up to 10 guide rings).



Planning



One-ring guide



Implant placement



FULLY DIGITAL WORKFLOW

Improve the quality of your care.

CAD-CAM* CENTRE

Our France-based CAD-CAM centre, located at the foot of Mont Blanc (Sallanches - 74), offers a complete range of made-to-measure prostheses. We have a fleet of 7 continuous 5-axis machining systems. The performance of these high-precision machines, specializing in CAD-CAM operations, ensures high-quality, high-precision products. LYRA has the most high-performance 3D printing machines on the market, to meet your all your needs in terms of copings, provisional restoration, surgical guides or templates. We design and/or manufacture prosthetic parts for laboratories within 24 to 96 hours, depending on the complexity of the project.



CERTIFIED iphysio® PROTOCOL LABORATORIES

LYRA has established a network of partner laboratories, to process impressions created using iphysio®. These laboratories have “iphysio® ready” certification, CAD-CAM experts, and comprehensive knowledge of digital workflows.

Dental technicians are trained on the patented iphysio® system. They are then tested and certified “iphysio® ready” by the LYRA team.

The laboratories have a library of digital STL iphysio® FILES, to design and perform final restoration from standard or digital impressions taken with the 3Shape system.



*COMPUTER-AIDED DESIGN (CAD) & COMPUTER-AIDED MANUFACTURING (CAM)



SERVICE PROVIDER

At your side to facilitate the digital migration of your dental practice.

THE LYRA MODEL

The LYRA model is based on service, tailored support and training.

TEAM OF TRAINERS AND TECHNICIANS

Composed of technicians throughout France, at your service to support you in implementing equipment, performing your first cases, and developing your digital solutions.

MY LYRA

Thanks to a single log-in and ID, you can access all platforms related to your activities at any time:

LYRA PLACE

Manage your contract or rates, and monitor prosthetic cases in real time.

LYRA GUIDE

Manage and plan guided surgery cases.

LYRA LIGN

Manage and plan alignment tray cases.

LYRA SHOP

Order implants, the iphysio® profile designer, prosthetic implant solutions and digital solutions.

LYRA TRANSFER

HDS (health data hosting)-certified platform, share your files securely and easily.

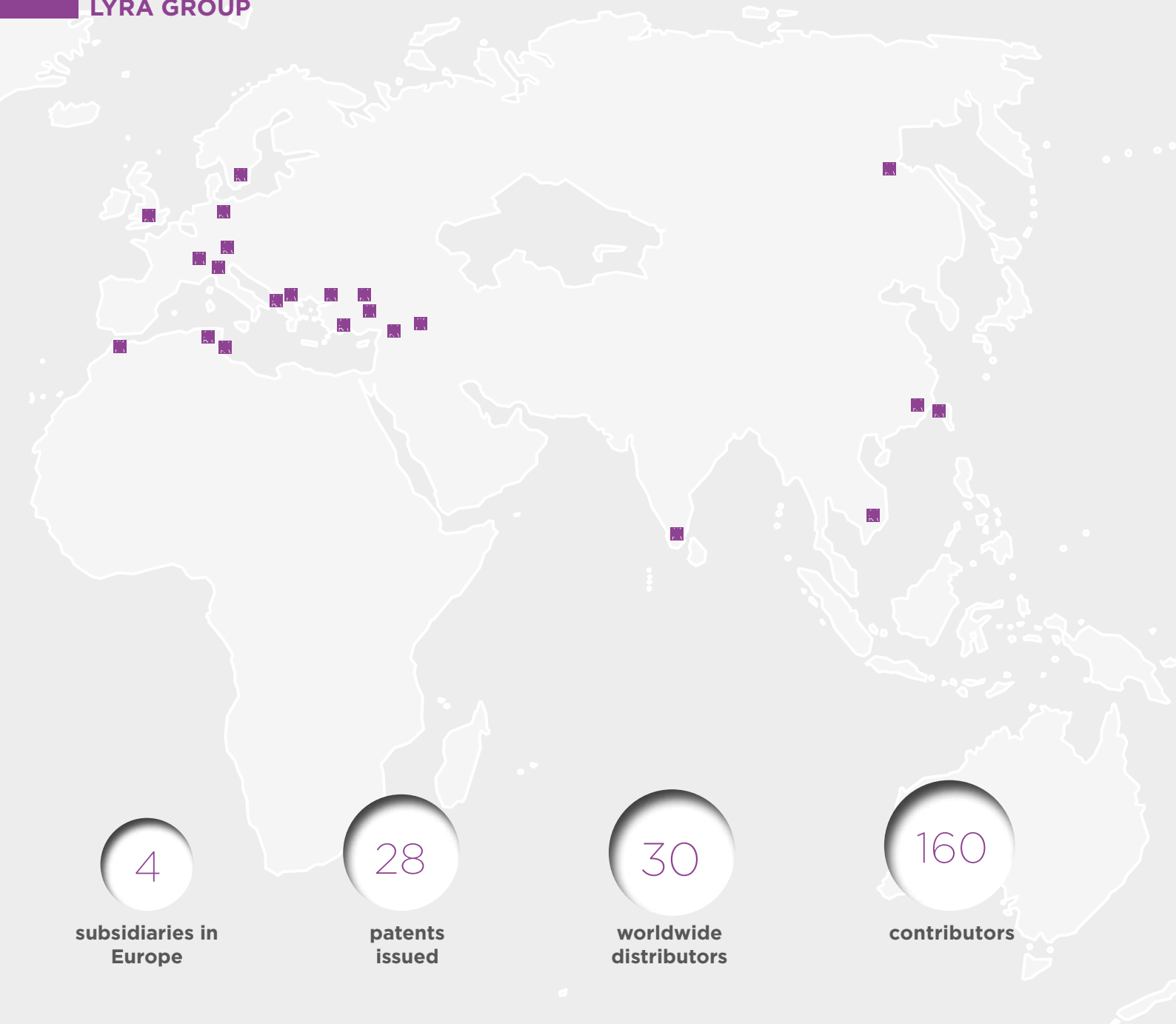


EVOLYOU, TRAINING CENTRE

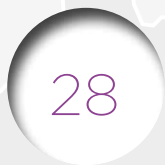
VCPD certified body, for more than 10 years Evolyou has been providing support in developing your dental practice, incorporating **tailored support and a** peer-based learning system for your dental practice, depending on your training. Evolyou is based on a teaching team of expert dental surgeons, and a training team of dental technicians and dental assistants.



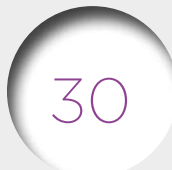
INTERNATIONAL
INFLUENCE



subsidiaries in Europe



patents issued



worldwide distributors



contributors

CONTACTS

OUR SITES

LYRA registered office:
25 rue Bleue, 75009 Paris
+33(0) 1 56 03 11 80
contact@lyra.dental

etk production headquarters:
726 rue du Général de Gaulle
74700 Sallanches
+33(0) 4 50 91 49 20
contact@lyra.dental

LYRA Italia Srl :
registered office - Largo Augusto, 8
20122 Milano (MI)
+39 2 382 39 126
italia@lyra.dental

Laboratory
Via Giuseppe Ripamonti 44
Edificio 6- Loft 18 - 20141 Milano

Euroteknika Holland BV :
Nieuwemeerdijk 297
1171NS BADHOEVEDORP
Netherlands
+31 207 025 004
nederland@lyra.dental

LYRA Suisse Sàrl :
Rue du Nant,6 - 1207 Genève
+41 22 500 11 00
suisse@lyra.dental

Euroteknika UK Ltd :
960 Capability Green Luton
Beds LU1 3PE - UK
+44 1582 56 38 35
uk@lyra.dental

LYRA etk Iberia
C/Murcia, 35 A-B
Pol. Ind. Can Calderón
08830 Sant Boi de Llobregat
Barcelona (Spain)
+34 900 504 219
info@lyraetk.es

CONTACT THE SALES ADMINISTRATION DEPARTMENT

 +33(0) 4 50 91 49 20

 contact@lyra.dental


FURTHER INFORMATION

FRANCE

 +33(0) 1 56 03 11 80

 contact@lyra.dental

EXPORT

 +33(0) 4 50 91 49 20

 contact@lyra.dental



ENJOY DIGITAL

www.lyra.dental | www.iphysio.dental | www.evolyou.dental

+33 (0)1 56 03 11 80 | info@lyra.dental

The following products are distributed by LYRA France: iphysio® profile designer, etk implants, etk Esthetibase interfaces, Cone beam 3Shape X1 are class IIb medical devices - etk surgical kits, abutment kits, CAD-CAM ingots, cosmetic kits are class IIa medical devices - 3D impression resins, scan bodies, Scan Posts™, 3Shape intra oral scanners and their accessories are class I medical devices. • These products are for use by health professionals only - Read the instructions for use contained in this medical device leaflet carefully - Products not reimbursed by health insurance companies. The following products are manufactured and sold by LYRA France: Prosthetic restoration (LYRALab), LYRALIGN alignment trays are made-to-measure medical devices. These products are for use by health professionals only - Read the instructions for use contained in this medical device leaflet carefully - Products may be reimbursed by health insurance companies. • LYRA FRANCE, Simplified joint stock company with capital of €10,000 - 25 rue Bleue, 75009 Paris - RCS Paris 799 960 067 – All documents published by LYRA refer to our applicable general sales conditions. Actual products may differ from photos - Reproduction, even partial, is prohibited.