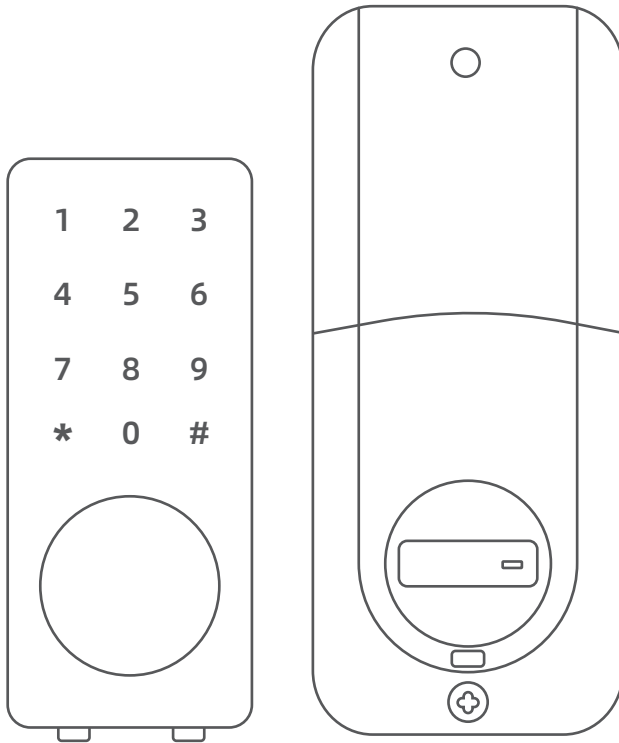


# Smart Lock Manual

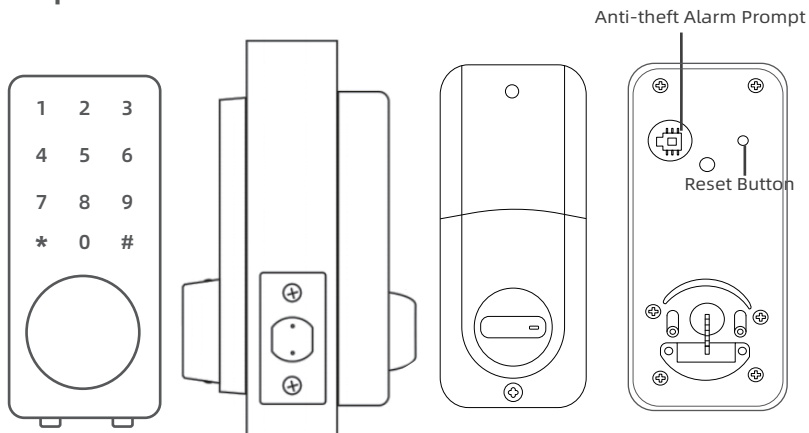



# CONTENTS

<b>1. INTRODUCTION</b>	02
1.1 Specifications	02
1.2 Dimensions	03
1.3 Door drill hole map	03
1.4 Package Includes	04
<b>2. INSTALLATION GUIDE</b>	05
2.1 Check the Door Dimensions	05
2.2 Confirm the direction of the door	06
2.3 Install Deadbolt	08
2.4 Install Keypad	08
2.5 Install Mounting Plate	09
2.6 Connect the IC wired and Install the Back Panel	10
2.7 Insert Battery and Install Back Battery Cover	10
<b>3. APP Operation Guide</b>	11
3.1 Download the APP "TTLock"	12
3.2 Register a new account	12
3.3 Match the Smart Lock with APP	12
3.4 APP function introduction	13
3.5 APP Account Management or Other Operation	16
<b>4. How to unlock/lock my door lock with the SMART WATCH?</b>	18
<b>5. Under what situations will the smart lock sound an alarm?</b>	18
<b>6. If the smart lock is in a non-addable state</b>	19
<b>7. FQA</b>	20

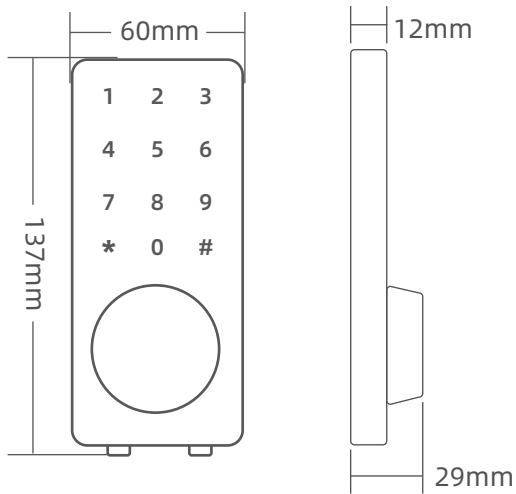
# 1. INTRODUCTION

## 1.1 Specifications

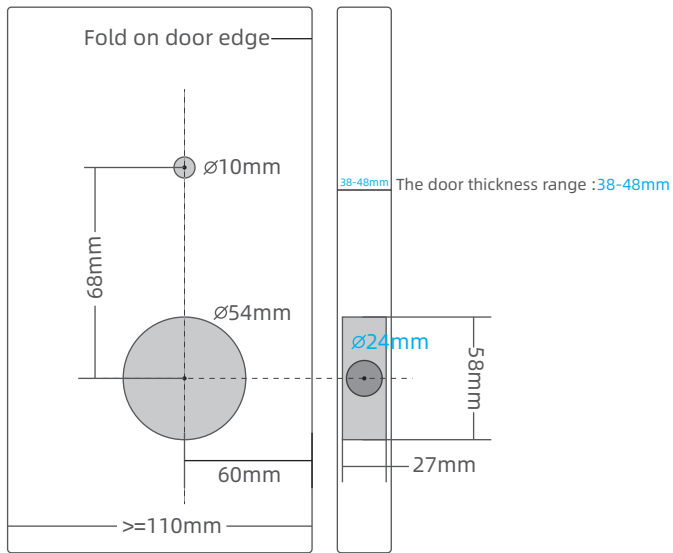


	Item No.	S110BBL
	Dimension	137*60*37mm
	Material	Zinc Alloy
	Weight	1.3kg
Communication mode	Bluetooth 4.0ble	
Unlock/Lock Way	Bluetooth,code,Mechanical key	
Support System	Android 4.3/ ios 7.0 above	
Unlock time	≈1.5 sec	
Power supply	≤30μA	
Working current	≤200mA	

## 1.2 Dimensions

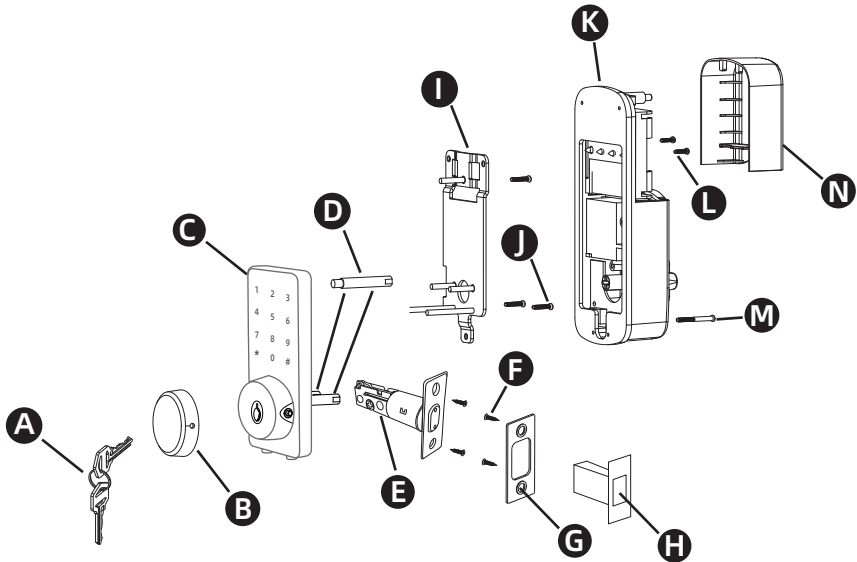




## 1.3 Door drill hole map






The width of the door frame  $\geq 110\text{mm}$

# 1.4 Package Includes



A*2	B*1	C*1	D*3	E*1	F*4	G*1	H*1
Key	Keyhole Cover	Keypad		Deadbolt		Strick Plate	Plastic Look Groove

I*1	J*3	K*1	L*2	M*1	N*1	
Mounting Plate		Receive Module			Battery Cover	

## 2. INSTALLATION GUIDE

### 2.1 Check the Door Dimensions

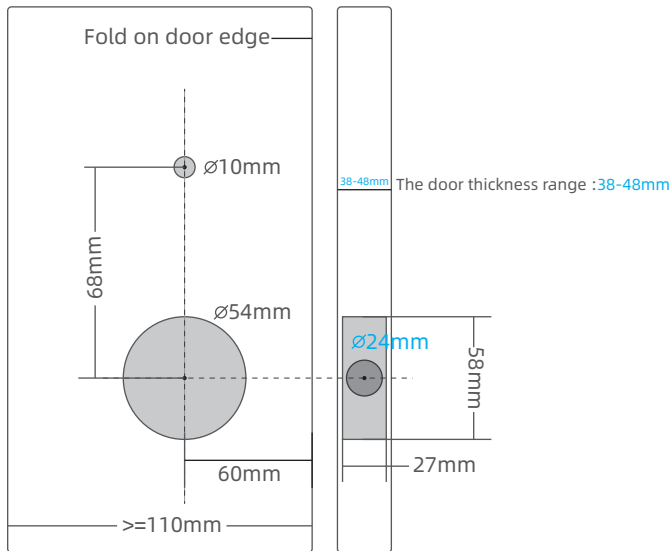
Door Frame  $\geq 110\text{mm}$

Door Thickness: 38-48mm

Compare the reference card and select the reference line that matches the door size.

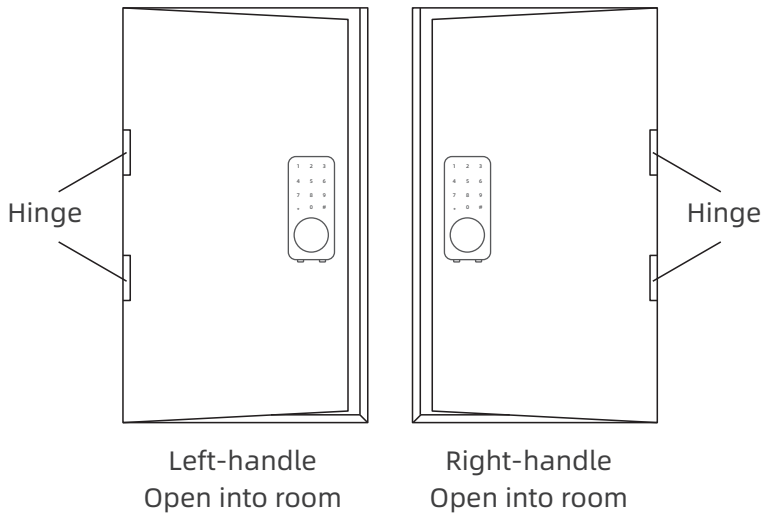
**Note:** Install and test lock with door open to avoid being locked out.

**Note:** When performing this operation, please take protective measures and be careful of the metal edge injure yourself.



The width of the door frame  $\geq 110\text{mm}$

## 2.2 Confirm the direction of the door



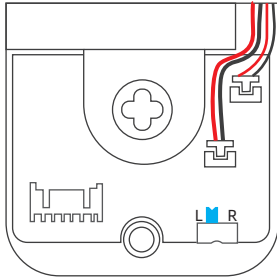
### If the door is left handle.

- 1.To install the lock for left side handling, ensure the toggle button on the back assembly is set to “L” .
- 2.Setting direction of the knob: **Horizontal** for Left handle when in unlock status.

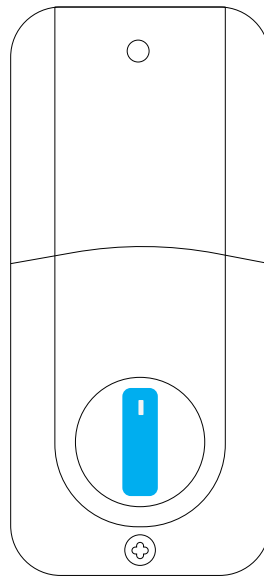
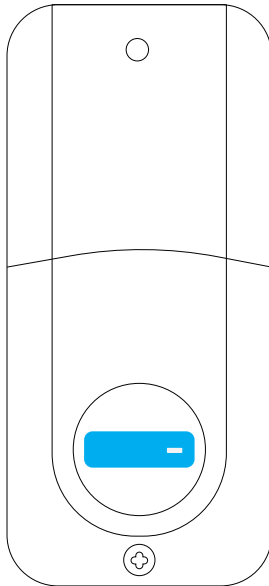
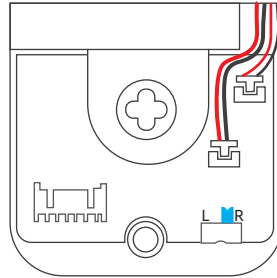
### If the door is right handle.

- 1.To install the lock for right side handling, ensure the toggle button on the back assembly is set to “R” .
- 2.Setting direction of the knob: **Vertical** for Right handle when in unlock status.

If the door is left handle.



If the door is right handle.

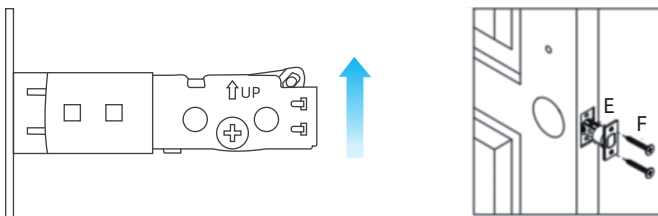




## 2.3 Install Deadbolt

Insert the deadbolt "E" and ensure it is parallel to the door face, use "F" to secure deadbolt.

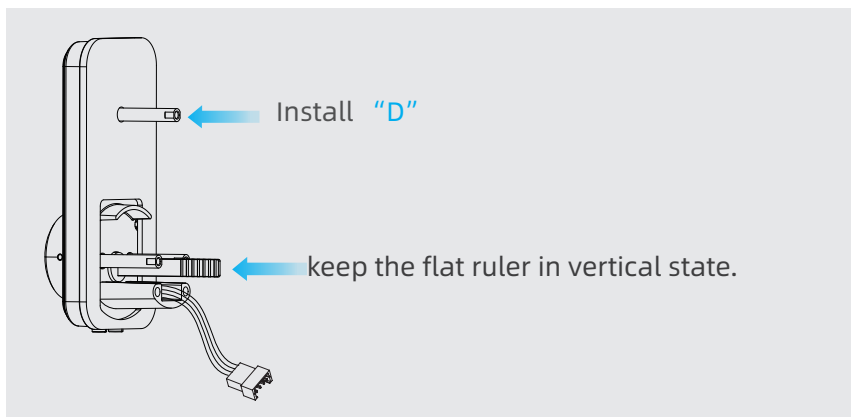
**Note:** Need to stay this way up when inserting the Deadbolt.



## 2.4 Install Keypad

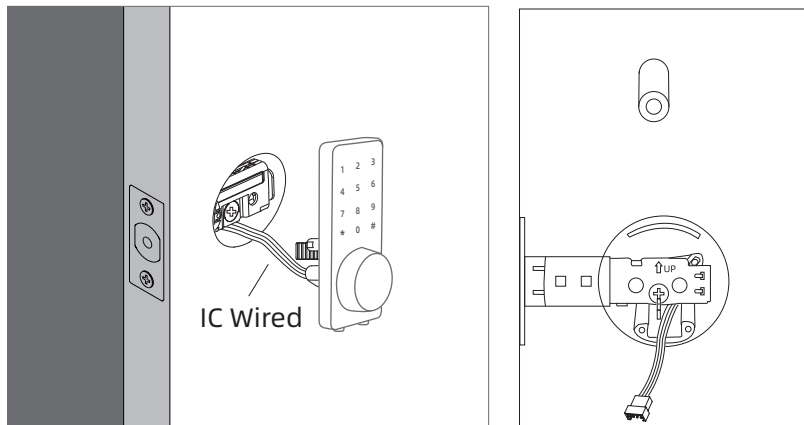
Install "D" into keypad inner plate.

**Note:** The flat ruler remains vertical during the installation process.



The front panel to pass through the hole and deadbolt.

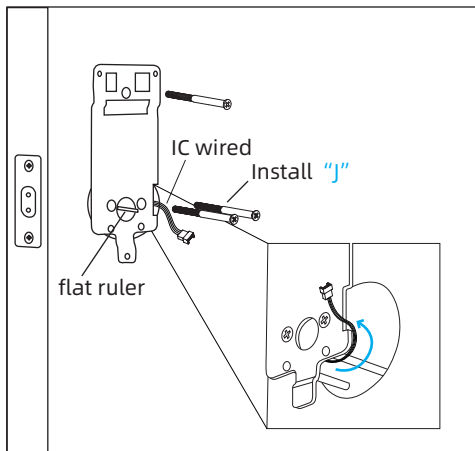
**Note:** Please ensure the flat ruler is vertical during installation, the IC wired need under the deadbolt and as like as the picture.



## 2.5 Install Mounting Plate

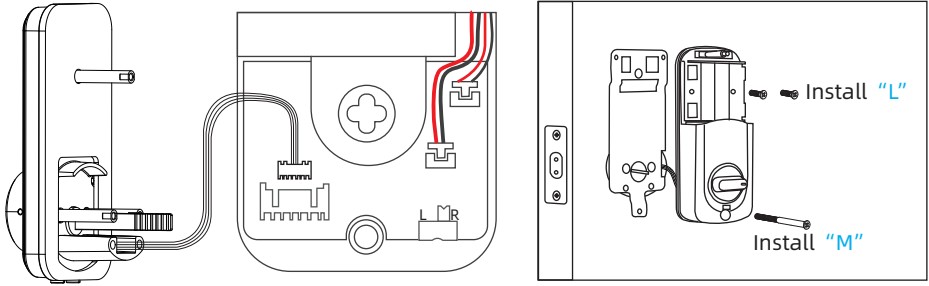
The IC wired around the column of the mounting plate as picture.

Install "J" .



## 2.6 Connect the IC wired and Install the Back Panel

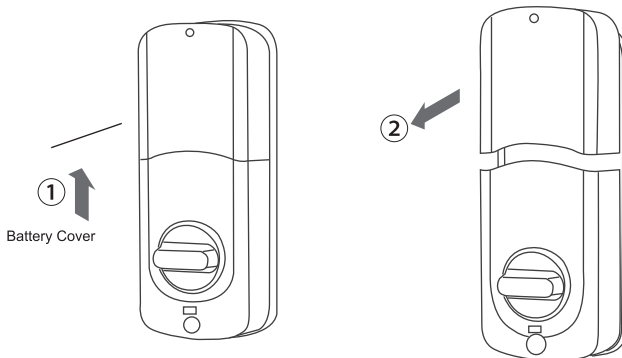
Connect the IC wired, and Install the Back Panel, install "L" and "M" .

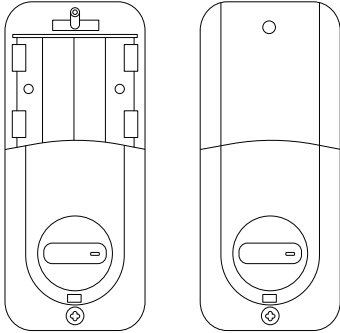


## 2.7 Insert Battery and Install Back Battery Cover

### Tips:

1. Alkaline batteries are recommend in order to stabilize the power supply,if you don't use alkaline, battery performance will be reduced greatly.
2. All setting will be retain in the memory even if the batteries are complete dead. If batteries are complete dead, using 9v backup battery to unlock the door.

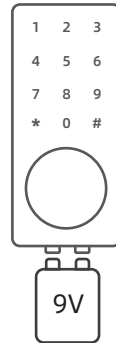




Insert 4pc (AA) 1.5V Alkaline batteries and slide the battery cover back onto the receiver module.

### Low Battery Alarm:

You can open your front door with a 9v battery on the instant charging if you forget to replace the low batteries.



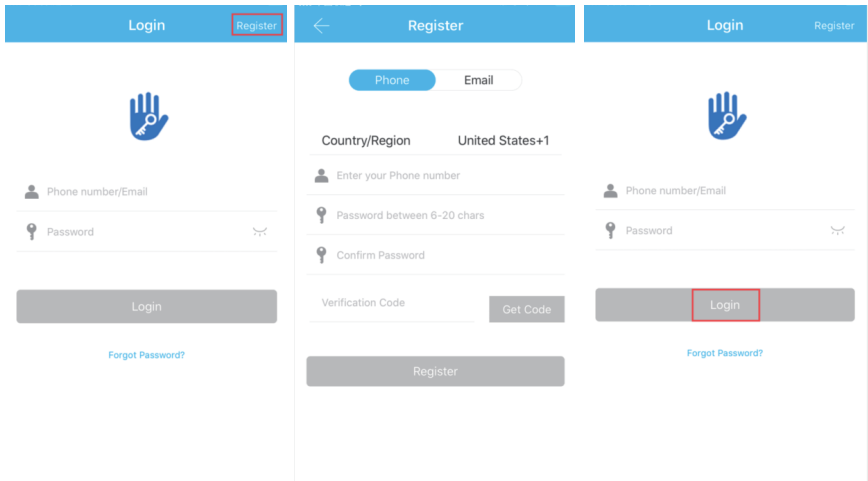
## 3. APP Operation Guide

### 3.1 Download the APP "TTLock"

Android Mobile Phone--Search "TTLock" from Google Play.  
Apple Mobile Phone--please search "TTLock" from App Store.

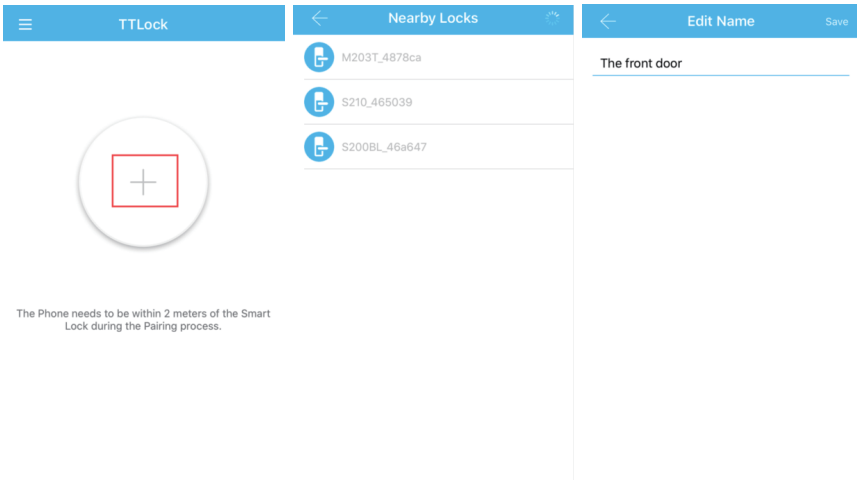


### 3.2 Register a new account (phone number or email)



### 3.3 Match the Smart Lock with APP

When matching, please follow the prompt steps of the program, you need to touch the screen, match the blue icon lock , and set the name for the lock. Such as the front door.



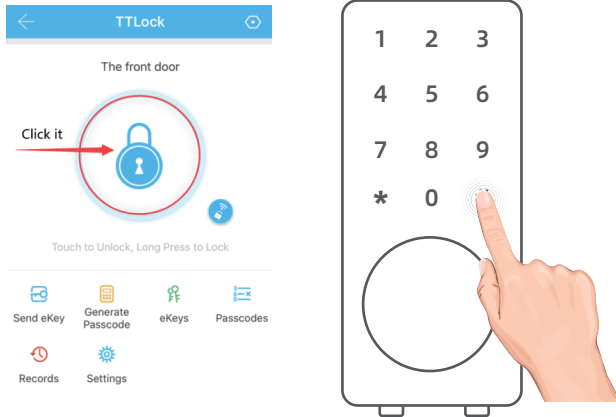
## 3.4 APP function introduction

### 3.4.1 Lock/Unlock (APP/Keypad)

**Via APP:** Touch to unlock, long press to lock.

**Note:** Please keep your phone near the door lock within 5 meters.

**Via Keypad:** Enter the passcode then press “#” to unlock. Long press “#” and hold 2s to lock.

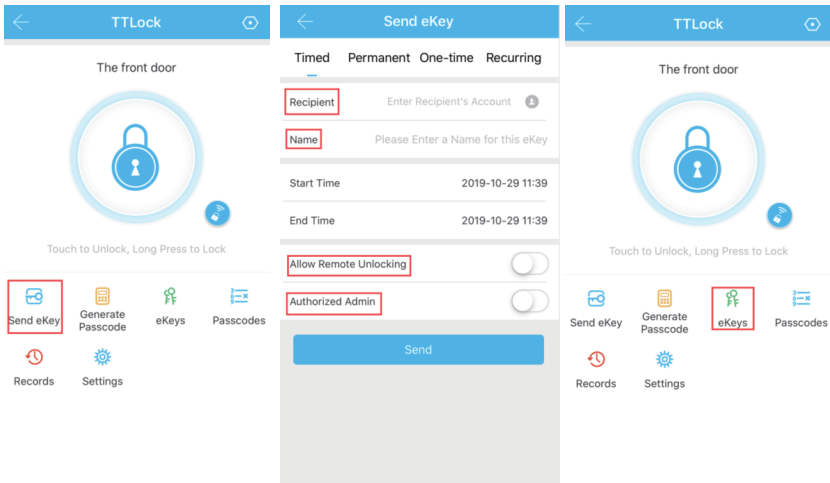


### 3.4.2 Sent Ekey

You can add multiple accounts on the app. Such as your family member.

You can authorize the Recipient to unlock/lock via the APP. The recipient needs to download the APP.

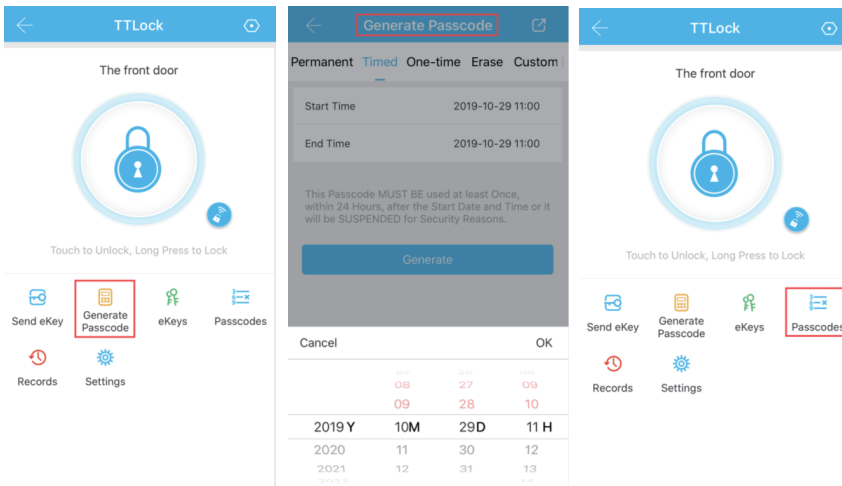
**Note:** This operation need to be connected to Bluetooth and network, the shared eKey will be stored in “eKeys” .



### 3.4.3 Generate Passcode

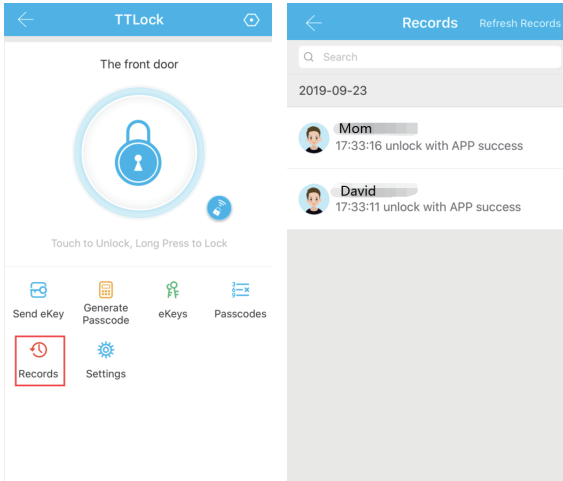
You can set a variety mode of password to unlock, or share them with others. Yourself or the recipient of passcode to unlock by entering the passcode on the keypad.

**Note:** This operation need to connect Bluetooth or gateway. The passcode will be stored in “Passcodes” .



### 3.4.4 Records

It records who comes and goes, and when. For 24/7 access logs, get all records about the door unlock/ lock anytime and anywhere.



### 3.4.5 Settings

For the Bluetooth lock function setting:

#### 1. Basics

- Battery Percentage.
- Lock name.
- Admin Passcode (You reset your admin passcode on the APP)

#### 2. Unlock Remotely

( Need to buy a gateway, you can remotely control your lock after pairing.)

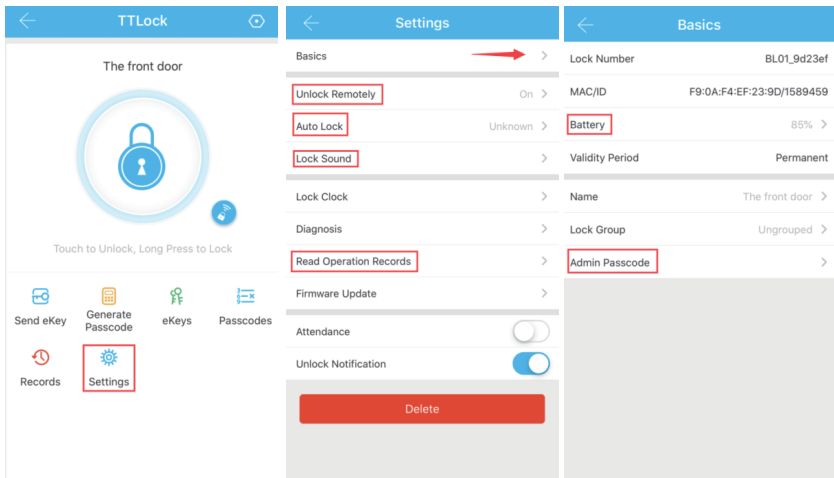
#### 3. Auto Lock ( 5s,10s,15s,30s,60s,Custom)

#### 4. Lock Sound

#### 5. Read Operation Record, etc.

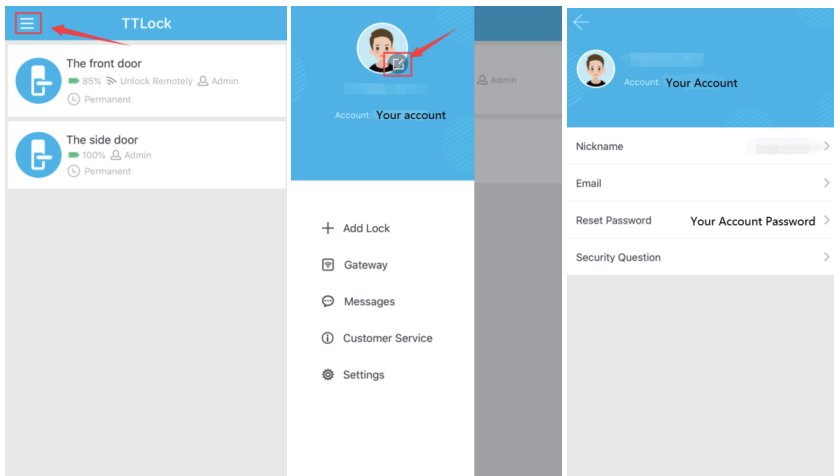
**Note:** These operations require Bluetooth to be turned on and a smart lock is connected.



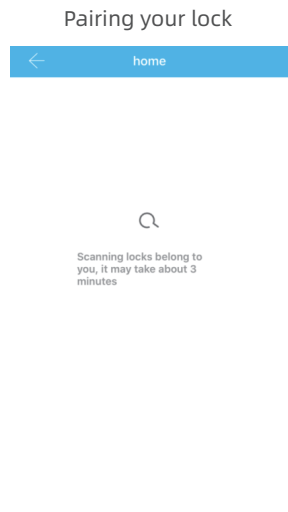
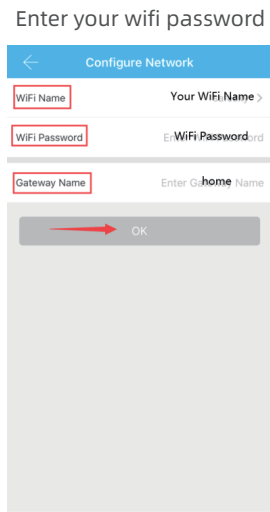
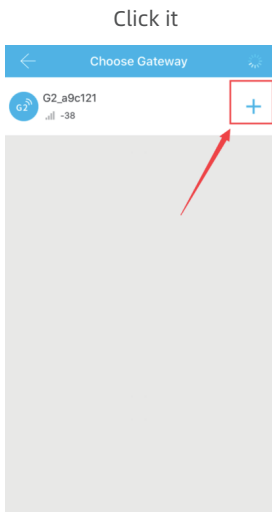
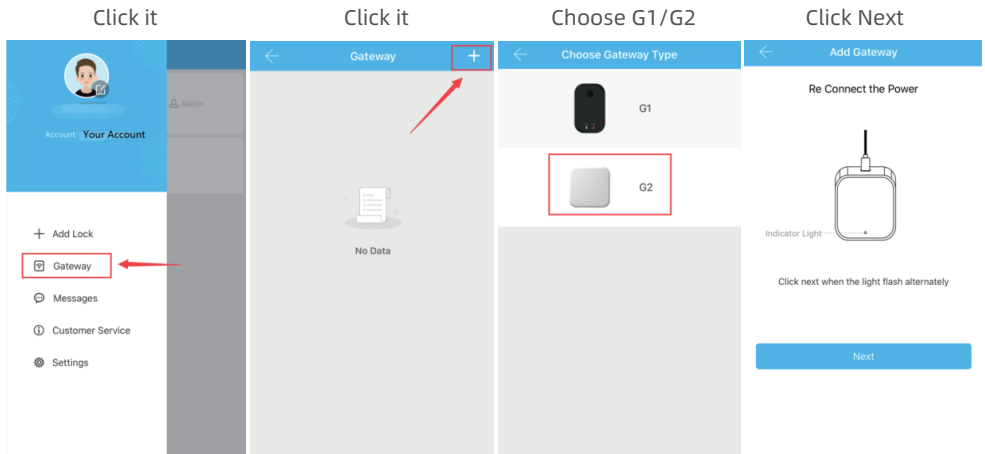


## 3.5 APP Account Management or Other Operation

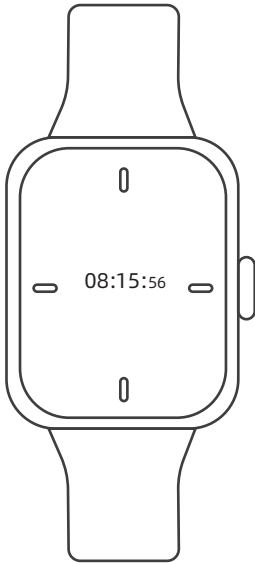
### 3.5.1 How do I reset or change my APP account login password?



### 3.5.2 How to match a Wi-Fi gateway to APP? ( If you have already purchased a gateway. )



## 4. How to unlock/lock my door lock with the SMART WATCH?



Apple watch  
Android watch

Support Smart Watch (iwatch or Android watch) to lock/unlock.

If the watch is connected to the phone, but it cannot search the "TTLock" App. Try to log in to the home page at your phone app and refresh, then check in the watch. If all settings are normal but can't lock/unlock. Opening the "TTLock" App in your phone to check if the key is in a normal state.

**Note:** All the operations, your watch and mobile phone require a certain range, the mobile phone network and Bluetooth need to remain connected.

## 5. Under what situations will the smart lock sound an alarm?

**5.1 The smart lock sounds an alarm when the battery is low.**

**Solution:** Please replace the battery or temporarily use the 9V backup battery.

**5.2 The Anti-theft Alarm Prompt button is not tightly pressed.**

**Solution:** Always press and hold the alarm button on the front panel during installation, otherwise it will always beeping when the battery is inserted.

### 5.3 When someone breaks into your home or the lock is loose.

**Solution:** You will find a record of illegal operation in the record. Then you can check if the lock is illegal operation or Loose state.

### 5.4 If you want the smart lock to never sound an alarm.

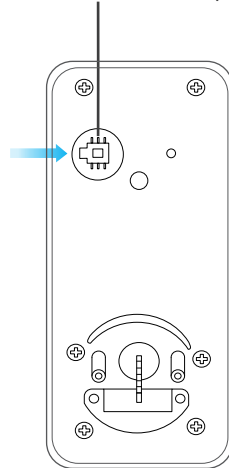
**Solution:**

**Turn off the anti-theft alarm:** Enter "\*32# (admin password) #0#" on the keypad.

**Turn on the anti-theft alarm:** Enter "\*32# (admin password) #1#" on the keypad.

**Note:** Keep the alarm button on the front panel always pressed when install, otherwise it will always beeping when put in the battery.

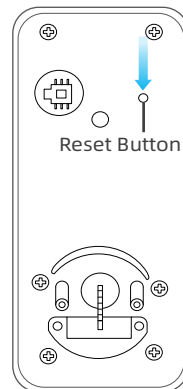
Anti-theft Alarm Prompt



## 6. If the smart lock is in a non-addable state (the lock name is gray on the APP or cannot be find)

**Solution:** Please press and hold the reset button 3s-5s until you hear the sound "DiDi" and try to connect again.

**Note:** This operation IC wired and battery need to be installed. This button is in the front Keypad panel.



## 7. FQA

The solution for details of FQA, please refer to the Instructions Guide. If necessary, please connect with our customer service.

Question	Answer
Why does the deadbolt is stuck out of work?	The IC cable is stuck with the locking tongue. You need to correctly place the IC line according to the installation instructions of Install Inside Mounting Plate.
Why the door lock can't to unlock/lock?	<b>Please note:</b> There is a toggle button in back panel, If it is the left side door, please set to <b>L</b> . If it is the right side door, please set to <b>R</b> . <b>Setting direction of the knob:</b> Vertical for Left handle when in unlock status, Horizontal for Right handle when in unlock status.
How to unlock/lock via keypad?	Long press " <b>#</b> " in keypad and hold 2s to lock. Enter the passcode then press " <b>#</b> " to unlock.
How to unlock/lock via APP?	Touch to unlock, long press to lock. (Please keep your phone near the door lock within 5 meters.)
How to open the keyhole cover?	Use 2 pins to press the left and right holes of the cover at the same time.
How do I Set admin passcode on the keypad? ( If this lock is not added to the phone )	Entering "*12#123456#Custom Admin Password#Confirm Password #" on the keyboard.
How do I reset admin passcode on the APP?	Main Menu-Settings-Basic-Admin Passcode (Checking Settings Part)
How to get a Wi-Fi gateway?	You can purchase an additional "G1 " or "G2" type of gateway, and also to contact our customer service.

Question	Answer
How do I set up automatic lock?	Main menu-Settings-Auto Lock (Checking Settings Part)
What does the difference between Send eKey and Generate Passcode?	<p><b>Send eKey:</b>  You can add multiple accounts on the app. Such as your family member.  You can authorize the Recipient to unlock/lock via the APP. The recipient needs to download the APP.</p> <p><b>Generate Passcode:</b>  You can set a variety mode of password to unlock, or share them with others. Yourself or the passcode recipient to unlock by entering the passcode on the keypad.</p>

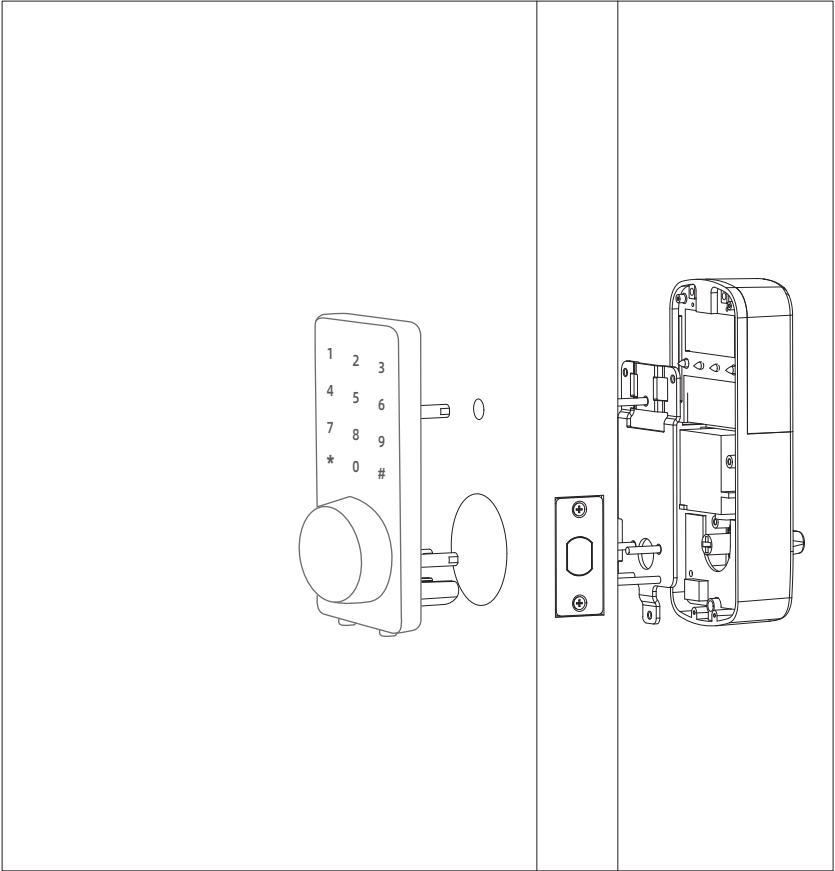
**This product have a 12 months warranty.**

If you need any help, please feel free to contact us!

email: [homide@milinaa.com](mailto:homide@milinaa.com)

Skype: [homaideSeller@outlook.com](mailto:homaideSeller@outlook.com)

(Available after 6:00 PM at Pacific time if need)



This product have a 12 months warranty.

If you need any help, please feel free to contact us!

email: [homide@milinaa.com](mailto:homide@milinaa.com)

Skype: [homaideSeller@outlook.com](https://www.skype.com/people/homaideSeller@outlook.com)

(Available after 6:00 PM at Pacific time if need)