

SMITH COLLEGE

*Smith Travel
Presents*



Hill Towns, Siena, and Renaissance Florence

March 27 — April 7, 2014

with Craig Felton, Professor of Art





SMITH COLLEGE

Hill Towns, Siena, and Renaissance Florence

March 27 — April 7, 2014



Dear Smith alumnae and friends,

Join us on this “Uniquely Smith” program which focuses on the art treasures found in beautiful Tuscany, one of the most important areas of artistic creativity in Italy, and the birthplace of the Renaissance. Accompanying you will be Professor Craig Felton, from the Art Department at Smith, and Susie Orso, the designer of many one of a kind travel programs from Specialtours.

This program has many wonderful parts, which, when put together, will provide an excellent understanding of the region of Tuscany, from the ancient Etruscan period to the full flowering of the Renaissance during the Quattrocento in Florence.

We begin with two days in the magnificent, small Tuscan city of Siena where you will stay at the Grand Hotel Continental near to the Piazza del Campo and the Palazzo Pubblico. You will then travel to Pienza for two nights where you will visit the magical towns of Montalcino, Arezzo, Monterchi, and San Sepolcro, on what has become known as the “Piero della Francesca trail.” Finally, enjoy six nights in Florence at the Hotel Helvetia and Bristol, where travelers from Stravinsky to the Danish royal family have stayed. Along the way you will have Craig Felton and highly specialized experts to bring the art of Tuscany to life.

Two of the highlights of this trip will be the immersion in the proto-Renaissance Sieneese art of Duccio, Simone Martini, and the brothers Ambrogio and Pietro Lorenzetti, and in Arezzo, of the renowned frescoes of *The Story of the True Cross* in the Church of San Francesco, from which we will continue on to additional masterworks by Piero. Our long stay in Florence will take us to some of the most famous works of art and architecture in Western art. Those of you who have read Dan Brown’s recent book “Inferno” will already have the whiff of excitement that is part of the mystery and discovery of the art of Florence. We begin with a private tour of the Baptistry where we find the late 13th century ceiling mosaics of the *Last Judgment* by Coppo di Marcovaldo, an emerging pre-Renaissance artist, and the magnificent gilt-bronze *Gates of Paradise* by Lorenzo Ghiberti from circa 1425-1452. On another day, we will traverse, by special arrangement, the Vasari corridor, which connects the Palazzo Vecchio with the Palazzo Pitti. Churches, sculpture, and paintings that glorify this city of artistic wonders are by such artists as Brunelleschi, Masaccio, Botticelli, Ghirlandaio, Donatello, and Michelangelo. Each day will continue to enrich your aesthetic spirits.

Since space will be limited on this program, we encourage you to reserve your space as soon as possible by calling Smith Travel at (800) 225 2029 or sending your completed registration form to Smith Travel, 33 Elm Street, Northampton, MA 01063 or by fax to (413) 585 2015.

We look forward to hearing from you.

Elizabeth Bigwood
Director, Smith Travel
Office of Alumnae Relations, Smith College



Primavera (Allegory of Spring) by Sandro Botticelli

Our Lecturer & Tour Director



Craig Felton, Professor in the Department of Art, Smith College, teaches courses on Italian and Spanish Art of the Renaissance and Baroque periods, as well as introductory survey courses in the history of Western Art. His research and publications focus on painting in Italy and Spain. Most recently, he wrote a comprehensive biographical essay on the Hispano-Italian painter Jusepe de Ribera for the catalogue of an exhibition at the Meadows Museum, SMU, Dallas, and another similar essay on the Italian-Maltese painter Mattia Preti, for an exhibition held in Taverna, Calabria, Italy, and Valletta, Malta. For both of these exhibitions he was an invited symposium speaker. He taught at Southern Methodist University, Dallas, and at Texas Christian University, Fort Worth, and was then the Assistant Director at the Kimbell Art Museum, Fort Worth, before joining the faculty of Smith College. He and Susie Orso have traveled together on programs designed for Smith Travel in Italy, Sicily, Belgium, The Netherlands, Germany, Austria, the Czech Republic, and Hungary.



Susie Orso, who is part of London-based Specialtours, has made the arrangements and will accompany the tour. She has helped lead numerous tours for Smith Travel and has a faithful following. She has lived in Italy for over 40 years and has developed many personal contacts which enable access to private homes and collections in Italy and the rest of Europe.

PRELIMINARY ITINERARY

Please note that this itinerary is subject to change

Day 1 ~ Thursday, March 27

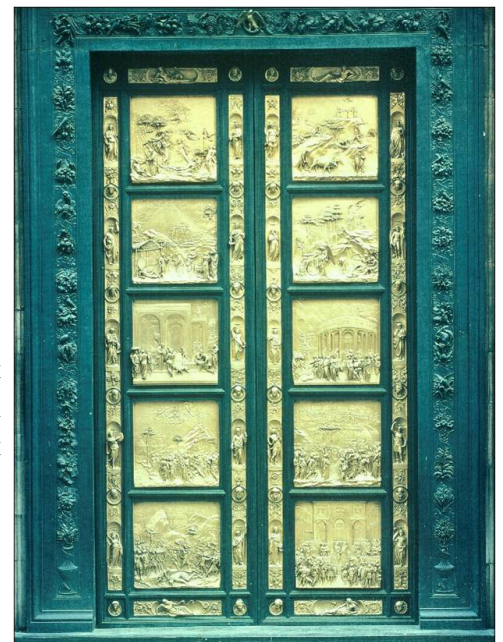
Depart the US for Pisa.

(Appropriate in-flight meals)

Day 2 ~ Friday, March 28

Arrive in Pisa this morning or early afternoon, where you will be met and taken to Siena to the five-star *Grand Hotel Continental*. Lunch will be independent and the rest of the afternoon at leisure. Tonight we meet together for welcome drinks and dinner at the hotel.

Grand Hotel Continental *(Dinner)*



Lorenzo Ghiberti's Gates of Paradise

Day 3 ~ Saturday, March 29

Following breakfast, depart the hotel for a tour which will include the Cathedral (the 1266-68 Pulpit of Nicola Pisano, and the famous Piccolomini Library and frescoes by Pinturicchio and Raphael), the Museo dell'Opera del Duomo (including Duccio's *Maestà*, and sculpture of Giovanni Pisano, and works by other artists of the emerging Renaissance), and the Baptistry (especially Donatello's *Feast of Herod* bronze relief on the Baptismal Font) and the Pinacoteca Nazionale (Picture Gallery), with an overview of Siense painting. We will enjoy lunch at Ristorante Le Logge. Afterwards, we continue for a visit to the Palazzo Pubblico (with the famous frescoes of Simone Martini: *Madonna and Child Enthroned*, and Ambrogio Lorenzetti: *The Good and Bad Government*), followed by some leisure time. Dinner tonight will be independent.

Grand Hotel Continental (Breakfast, Lunch)

Day 4 ~ Sunday, March 30

This morning, depart by coach (with luggage) for Montalcino to visit the Civic and Diocesan Museum. We'll view fine early Siense wooden sculptures and also paintings by Pietro Lorenzetti and Simone Martini. This afternoon lunch will be private at the Castle of Cosona (subject to confirmation). After lunch, we continue to Sant'Antimo and visit the Romanesque Abbey, formerly of the Benedictine Order and now of the Premonstatensian Order. We then continue to Pienza and check in at the *Hotel il Chiostro*. Tonight's dinner will be at the hotel.

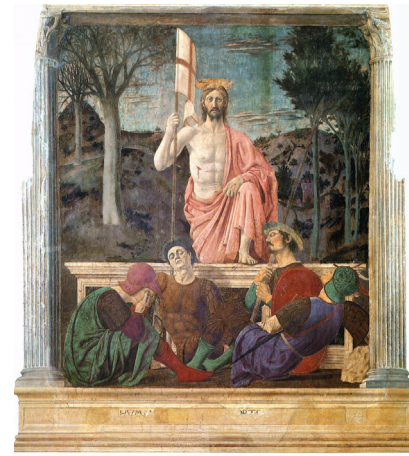
Hotel il Chiostro (Breakfast, Lunch, Dinner)



The Story of the True Cross by
Piero della Francesca



Madonna del Parto by
Piero della Francesca



Resurrection by Piero della Francesca

Day 5 ~ Monday, March 31

Today we visit the town of Pienza — the Cathedral, the Cathedral Museum, and the Palazzo Piccolomini with its courtyard and hanging gardens. We leave for the Etruscan city of Chiusi with a visit to the Etruscan museum. Continuing on to Montepulciano, we will have lunch at Ristorante La Grotta. A visit to the Renaissance church of San Biagio and some free time in the town will follow. We return to Pienza for dinner at the hotel.

Hotel il Chiostro (Breakfast, Lunch, Dinner)

Day 6 ~ Tuesday, April 1

This morning we leave by coach (with luggage) for a day dedicated to the artist, Piero della Francesca. First, we visit Arezzo and the Basilica of San Francesco, with the fresco cycle of *The Legend of the True Cross*, followed by the church of Santa Maria di Pieve, a Romanesque building with later Gothic modifications and a fine altar piece by Pietro Lorenzetti. Finally, we will see the Piazza Grande designed by Giorgio Vasari. After lunch at Ristorante Le Chiavi d'Oro, we continue to Monterchi and see the *Madonna del Parto*, a masterwork by Piero, and then on to the small town of San Sepolcro, Piero's home, for a visit to the Museo Civico to see his magnificent fresco of the *Resurrection*. We end the day in Florence, where we check in at the five-star *Hotel Helvetia and Bristol*. Tonight's dinner is independent.

Hotel Helvetia and Bristol (Breakfast, Lunch)

Day 7 ~ Wednesday, April 2

Our day begins with a guided visit to the Baptistry (before opening times by special arrangement), followed by the Museo dell'Opera del Duomo (Cathedral Museum) and the Bargello, with its superlative Florentine Renaissance sculpture collection. After a visit to the Palazzo Gondi for a refreshing drink (subject to confirmation), we will then have lunch at Caffè Italiano, before visiting the Franciscan Church of Santa Croce (with frescoes by Giotto and his followers) and the Pazzi Chapel (designed by Filippo Brunelleschi). The rest of the afternoon will be at leisure and dinner tonight will be independent.

Hotel Helvetia and Bristol (Breakfast, Lunch)



Day 8 ~ Thursday, April 3

This morning we depart for the Medici Palace and visit the Chapel with mid-15th century frescoes of *The Adoration of the Magi* by Benozzo Gozzoli and the Salone with the later-17th century frescoes of an *Allegory of the Medici Family* by Luca Giordano. We continue to the famous Dominican Monastery of San Marco and see the beautiful paintings and frescoes by Fra Beato Angelico. Later, at the Accademia, we see Michelangelo's renowned marble sculpture of *David* and his evocative, unfinished sculptures of the *Prisoners*. Today's lunch will be independent and the afternoon is at leisure. Tonight we'll dine at Ristorante Convivium.

Hotel Helvetia and Bristol (Breakfast, Dinner)

Day 9 ~ Friday, April 4

Start the day with a visit to the Church of Santa Trinità, the Uffizi Gallery, and by special arrangement, the Vasari Corridor. Then, continue to a private lunch at Palazzo Torrigiani (subject to confirmation). After lunch, visit the Brancacci Chapel (with frescoes by Masaccio and Masolino) in the church of S. Maria del Carmine and the Brunelleschi-designed Church of Santo Spirito. Return to the hotel before an independent dinner.

Hotel Helvetia and Bristol (Breakfast, Lunch)



Day 10 ~ Saturday, April 5

Today we visit the Dominican Church of Santa Maria Novella, with the frescoes of Ghirlandaio, Filippino Lippi, etc., and the Green Cloister with frescoes by Paolo Uccello and others. Then, we continue to the Brunelleschi-designed Church of San Lorenzo for a visit to include the church proper (with sculptures by Donatello) and the Old Sacristy, the Laurentian Library (designed by Michelangelo), and the Medici Chapels (with tomb sculpture by Michelangelo). Lunch will be independent with the remainder of the afternoon at leisure. Later, meet the group for departure from the hotel to Arcetri for dinner at Ristorante Omero.

Hotel Helvetia and Bristol (Breakfast, Dinner)

Day 11 ~ Sunday, April 6

This morning, leave for the Church of S. Felicita (and the Capponi Chapel with paintings by Jacopo da Pontormo). Visit the Palatine Gallery in the Palazzo Pitti. After an independent lunch, we reassemble for a visit to the Palazzo Vecchio, with the Salone dei 500, the Studiolo of Francesco 1st, and the chapel of Eleanor of Toledo. The rest of the afternoon will be at leisure. Tonight, enjoy farewell drinks and dinner at the hotel.

Hotel Helvetia and Bristol (Breakfast, Dinner)

Day 12 ~ Monday, April 7

After breakfast, depart for Pisa or Florence airport for return flights to the US.

(appropriate in-flight meals)

General Trip Information & Terms and Conditions

Trip Dates: March 27 — April 7, 2014

Duration: 11 days

Activity Level: Moderately active

Cost: \$5,950 per person, based on double occupancy

The cost includes accommodation in four-star (Pienza) and two-five star hotels (Siena and Florence); transportation by private coach; all buffet breakfasts, 5 lunches, 6 dinners including wine, water and coffee, and 3 cocktail receptions; guides; all entrances; portage at the hotels; services of a Specialtours escort; drivers' gratuities.



Single Supplement: \$1,025 per person

Not Included:

Flights from the US to Pisa and from Florence to the US; any meals indicated as independent on the itinerary; personal extras; passport fees; travel insurance.

Airfare:

Airfare is not included in the cost of the program. Flights are available to Pisa via London, Paris, and Munich. Many options are available, either online or through your travel agent.

Early Arrival/Late Departure:

If you wish to arrive in advance of, or stay later than, the group please let Smith Travel know, so that the necessary arrangements can be made with the hotels. The additional cost will be payable on site. Please see the pre-departure information sheet for hotel costs.

Passports:

U.S. citizens may enter Italy for up to 90 days for tourist or business purposes without a visa. The passport should be valid for at least three months beyond the period of stay.

Deposit and Payment:

A non-refundable deposit of \$750 per person is required by November 1, 2013.

The balance is required by January 27, 2014 and must be paid by check, payable to Smith College.

Cancellation Policy:

The deposit for this trip is non-refundable. In the event that you must cancel, please send written cancellation as soon as possible. The cancellation policy is as follows: 59-41 days before departure, 50% of the tour cost is refundable; 40-21 days before departure, 25% of the tour cost is refundable; 20-14 days before departure, 15% of the tour cost is refundable. After this, no refund is normally possible through Specialtours. Cancellation insurance is strongly advised, and information will be sent with your confirmation letter from Smith Travel.



Eligibility:

These trips are designed for alumnae of Smith College and accompanying members of their immediate families. Space permitting, a participating alumna may bring a non-Smith friend or couple. **Please note:** This trip involves full days of sightseeing and significant amounts of walking. You should be in good physical condition to enjoy the tour to the fullest. For further information about the trip, call Smith Travel at (800) 225-2029 or email alumtrav@smith.edu.

Trip cancellation insurance: Insurance is highly recommended. You will receive travel insurance information from Smith Travel with your confirmation letter.



SMITH COLLEGE

Hill Towns, Siena, and Renaissance Florence

March 27 — April 7, 2014

Registration Form

Enclosed is my credit card information or my deposit check (\$750 per person)
payable to Smith College.

NAMES (as appears on passport) _____

ADDRESS _____

CITY _____ STATE _____ ZIP _____

HOME PHONE _____ WORK/CELL _____

EMAIL _____

NO. OF PERSONS _____ AMOUNT ENCLOSED (\$750 per person, non-refundable): _____

I/we are registering: _____ DOUBLE OCCUPANCY (\$5,950) _____ SINGLE OCCUPANCY (plus \$1,025)

If using a credit card for deposit, please complete the following section:

_____ VISA _____ MASTERCARD CARD NUMBER: _____

EXPIRATION DATE: _____ CID CODE: _____

Terms and Conditions: Smith College (Smith) is the sponsor of the tours. As the sponsor, Smith has engaged independent tour operators to arrange the tours. Because Smith does not own, operate, manage, or control, and is not in a partnership or joint venture with, either the tour operators or the various independent companies and persons with which or whom the tour operator has arranged to supply services to the tour, Smith and its officers, directors, trustees, agents, servants, employees, affiliates, and assigns are not liable for any negligent or willful acts or omissions of the tour operator or the various suppliers, including any acts or omissions on their part that cause, without limitations, injury, death, theft, damage to or loss of property, delay, inconvenience, or the cancellation, substitution, overbooking or downgrading of accommodations, transportation or other services. Additional terms and conditions may apply to your trip and will be sent to you with your registration acknowledgement, which you must sign and return to Smith.

EACH PARTICIPANT MUST SIGN:

SIGNATURE _____ DATE _____

SIGNATURE _____ DATE _____

*Please return this registration form and deposit to Smith Travel, 33 Elm Street, Northampton, MA 01063
phone: (800) 225-2029; fax: (413) 585-2015*