

SNAP 'N SHIELD™
universal, clevis and pipe supports

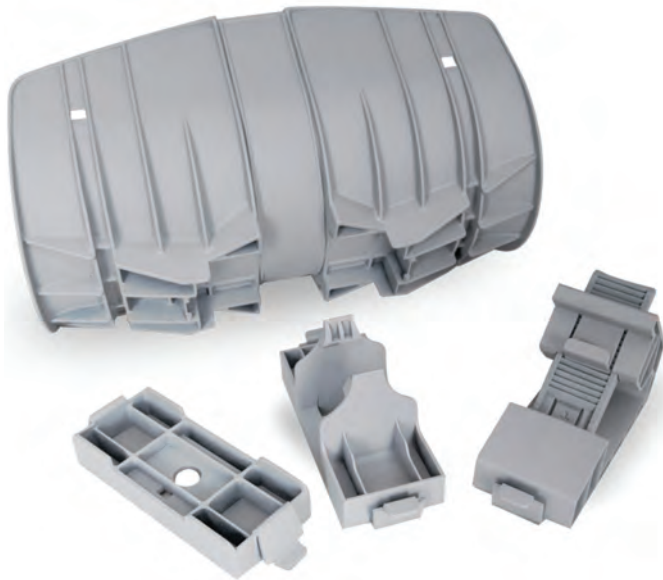


Three reliable, durable, and

1 Snap 'N Shield™ universal pipe supports

Features and benefits

- One shield with three cartridges options allow for use on strut, clevis hangers or angle iron
- Lip design at ends of shield allow for lateral movement of piping without damaging insulation
- Snap on design helps eliminate shield movement; helping prevent insulation damage
- Fast, easy installation – no tools required
- Suited for horizontal pipe runs
- Integrated slots for liquid line tie wraps
- Clevis hanger cartridge has optional magnetic shock detection device (tool-free “clip-on” design); three flags available for different shock intensity



Universal Support Technical Specifications

Applications:

Refrigeration, air conditioning, and plumbing

Material:

Thermylene P6-20FG-0738

- UV resistant
- Operating temperature -40° to 178°F
- Paintable (preserves mechanical properties even after painting)

- Non-adhesive surface for linear expansion of thermal insulation

Certification:

UL classified for USA (UL-723 (ASTM E 84) and UL-2043

ULC listed for Canada (ULC-S102.2).

Color:

Silver gray (G)

Shields Catalog #	Inside Opening	Wt./C	Shields Catalog #	Inside Opening	Wt./C
BPU250G	2.34"	21.4	BPU650G	6.46"	57.1
BPU350G	3.45"	29.5	BPU850G	8.65"	116.7
BPU450G	4.5"	41.7	BPU1050G	10.65"	187.5
BPU550G	5.56"	51.1	BPU1250G	12.65"	212.5

Cartridges and Accessories

Catalog #	Description	Wt./C
BPUSTRUTMTB22B24B26	Strut Cartridge for 1-5/8" Channel	11.5
BPUSTRUTMTB52B54B56	Strut Cartridge for 13/16" Channel	8.8
BPUSTRUTMT4D21	Strut Cartridge for 4D21 Channel	10.4
BPUSTRUTMT4D22	Strut Cartridge for 4D22 Channel	11.5
BPUANGLMT	Angle Iron Cartridge	19.4
BPUHGRMT	Clevis Hanger Cartridge	8.8
BPU5D	Clevis Hanger Shock Detector	8.6
BPHUCSG	Small Plastic Cover (2"-6")	57.2
BPHUCLG	Large Plastic Cover (8"-12")	116.7
BPU-1050S*	Strut/Angle Iron Stabilizer for 10" Shield	19.45
BPU-1250S*	Strut/Angle Iron Stabilizer for 12" Shield	22.22

* Must be ordered for 10" and 12" shields when using in strut and angle iron applications.

Copper Tubing Size Insulation Thickness

Copper Tubing Size	1/2"	3/4"	1"	1 1/2"	2"
1/4"	BPU250	BPU250	BPU350	BPU350	BPU450
3/8"	BPU250	BPU250	BPU350	BPU450	BPU550
1/2"	BPU250	BPU250	BPU350	BPU450	BPU550
5/8"	BPU250	BPU250	BPU350	BPU450	BPU550
3/4"	BPU250	BPU350	BPU350	BPU450	BPU550
1"	BPU250	BPU350	BPU350	BPU450	BPU550
1 1/4"	BPU350	BPU350	BPU350	BPU450	BPU550
1 1/2"	BPU350	BPU350	BPU450	BPU550	BPU650
2"	BPU350	BPU450	BPU450	BPU550	BPU650
2 1/2"	BPU450	BPU450	BPU550	BPU650	BPU850
3"	BPU450	BPU550	BPU550	BPU650	BPU850
3 1/2"	BPU550	BPU550	BPU650	BPU850	BPU850
4"	BPU550	BPU650	BPU650	BPU850	BPU850

Sch. 40/80 Pipe Insulation Thickness

Sch. 40/80 Pipe	1/2"	3/4"	1"	1 1/2"	2"
1/4"	BPU250	BPU250	BPU250	BPU350	BPU450
3/8"	BPU250	BPU250	BPU350	BPU450	BPU550
1/2"	BPU250	BPU350	BPU350	BPU450	BPU550
3/4"	BPU250	BPU350	BPU350	BPU450	BPU550
1"	BPU250	BPU350	BPU350	BPU450	BPU550
1 1/4"	BPU350	BPU350	BPU450	BPU550	BPU650
1 1/2"	BPU350	BPU350	BPU450	BPU550	BPU650
2"	BPU350	BPU450	BPU450	BPU550	BPU650
2 1/2"	BPU450	BPU450	BPU550	BPU650	BPU850
3"	BPU550	BPU550	BPU550	BPU850	BPU850
3 1/2"	BPU550	BPU550	BPU650	BPU850	BPU850
4"	BPU550	BPU650	BPU850	BPU850	BPU850

cost effective support options to

2 Snap 'N Shield™ clevis supports*

* B3100 clevis hanger and Snap 'N Shield™ for clevis sold together, assembly still required.

Features and benefits

- Snaps directly onto clevis hanger
- Snap on design helps eliminate shield movement; helping prevent insulation damage
- Fast, easy installation – no tools required
- Suited for horizontal pipe runs
- Integrated slots for liquid line tie wraps
- Allows pipe to expand without damaging the insulation
- Helps protect insulation from damage caused by rubbing against clevis hanger
- Optional magnetic shock detection device (tool-free “clip-on” design); three flags available for different shock intensity



Built-In Shock Indicator

Clevis Support Technical Specifications

Applications:

Refrigeration, air conditioning, and plumbing

- Non-adhesive surface for linear expansion of thermal insulation

Material:

Thermylene P6-20FG-0738

- UV resistant
- Operating temperature -40° to 178°F
- Paintable (preserves mechanical properties even after painting)

Certification:

UL classified for USA (UL-723 (ASTM E 84) and ULC listed for Canada (ULC-S102.2).

Meets UL94 HB flammability standards.

Color:

Silver gray (G)

Catalog #	Shield Catalog #	Shield Nominal Inside Opening	Wt./ea.	Clevis Hanger Size
BPH3100-2	BPH250G	2.34"	0.778	B3100-2
BPH3100-3	BPH350G	3.45"	1.403	B3100-3
BPH3100-4	BPH450G	4.50"	1.750	B3100-4
BPH3100-5	BPH550G	5.53"	2.515	B3100-5
BPH3100-6	BPH650G	6.64"	3.255	B3100-6
BPH3100-8	BPH850G	8.64"	6.480	B3100-8

Copper Tubing Size	Insulation Thickness				
	½"	¾"	1"	1½"	2"
¼"	BPH3100-2	BPH3100-2	BPH3100-3	BPH3100-3	BPH3100-4
⅜"	BPH3100-2	BPH3100-2	BPH3100-3	BPH3100-4	BPH3100-4
½"	BPH3100-2	BPH3100-2	BPH3100-3	BPH3100-4	BPH3100-5
⅝"	BPH3100-2	BPH3100-2	BPH3100-3	BPH3100-4	BPH3100-5
¾"	BPH3100-2	BPH3100-3	BPH3100-3	BPH3100-4	BPH3100-5
1"	BPH3100-2	BPH3100-3	BPH3100-3	BPH3100-4	BPH3100-5
1¼"	BPH3100-3	BPH3100-3	BPH3100-3	BPH3100-4	BPH3100-5
1½"	BPH3100-3	BPH3100-3	BPH3100-4	BPH3100-5	BPH3100-6
2"	BPH3100-3	BPH3100-4	BPH3100-4	BPH3100-5	BPH3100-6
2½"	BPH3100-4	BPH3100-4	BPH3100-5	BPH3100-6	BPH3100-8
3"	BPH3100-4	BPH3100-5	BPH3100-5	BPH3100-6	BPH3100-8
3½"	BPH3100-5	BPH3100-5	BPH3100-6	BPH3100-8	BPH3100-8
4"	BPH3100-5	BPH3100-6	BPH3100-6	BPH3100-8	BPH3100-8

Sch. 40/80 Pipe	Insulation Thickness				
	½"	¾"	1"	1½"	2"
¼"	BPH3100-2	BPH3100-2	BPH3100-3	BPH3100-4	BPH3100-5
⅜"	BPH3100-2	BPH3100-2	BPH3100-3	BPH3100-4	BPH3100-5
½"	BPH3100-2	BPH3100-2	BPH3100-3	BPH3100-4	BPH3100-5
⅝"	BPH3100-2	BPH3100-3	BPH3100-3	BPH3100-4	BPH3100-5
1"	BPH3100-2	BPH3100-3	BPH3100-3	BPH3100-4	BPH3100-5
1¼"	BPH3100-3	BPH3100-3	BPH3100-4	BPH3100-5	BPH3100-6
1½"	BPH3100-3	BPH3100-3	BPH3100-4	BPH3100-5	BPH3100-6
2"	BPH3100-3	BPH3100-4	BPH3100-4	BPH3100-5	BPH3100-6
2½"	BPH3100-4	BPH3100-4	BPH3100-5	BPH3100-6	BPH3100-8
3"	BPH3100-4	BPH3100-5	BPH3100-5	BPH3100-6	BPH3100-8
3½"	BPH3100-5	BPH3100-5	BPH3100-6	BPH3100-8	BPH3100-8
4"	BPH3100-5	BPH3100-6	BPH3100-6	BPH3100-8	BPH3100-8

help protect your insulation.

3 Snap 'N Shield™ pipe supports

Features and benefits

- Fast, easy installation – snaps onto channel
- No tools required
- Snap on design helps eliminate shield movement; helping prevent insulation damage
- Helps protect insulation from damage that can be caused by rubbing against pipes or fittings
- Designed for side-by-side installation
- Meets UL94 HB flammability standards



Pipe Support Technical Specifications

Applications:

Strut or trapeze mounted horizontal pipe runs for refrigeration, air conditioning and plumbing

Material:

Basell Pro-Fax 8523 Polypropylene Copolymer

- UV resistant
- Operating temperature -40° to 178°F
- Paintable (preserves mechanical properties even after painting)

- Non-adhesive surface for linear expansion of thermal insulation

Certification:

UL classified for USA (UL-723 (ASTM E 84) and ULC listed for Canada (ULC-S102.2).

Meets UL94 HB flammability standards.

Available Colors:

Black (B) and white (W)

Black Support Catalog #	White Support Catalog #	Gray Support Catalog #	Nominal Inside Opening	Wt./C
BPS225B	BPS225W	–	2.25"	26
BPS325B	BPS325W	–	3.25"	37
BPS425B	BPS425W	–	4.25"	52
BPS525B	BPS525W	–	5.25"	69
BPS625B	BPS625W	–	6.25"	83
BPS825B	BPS825W	BPS825G	8.25"	103
BPSCB	BPSCW	–	Universal Cover	22

Copper Tubing Size	Insulation Thickness				
	½"	¾"	1"	1½"	2"
¼"	BPS225	BPS225	BPS325	BPS425	BPS525
⅜"	BPS225	BPS225	BPS325	BPS425	BPS525
½"	BPS225	BPS225	BPS325	BPS425	BPS525
⅝"	BPS225	BPS325	BPS325	BPS425	BPS525
¾"	BPS225	BPS325	BPS325	BPS425	BPS525
1"	BPS225	BPS325	BPS325	BPS425	BPS525
1¼"	BPS325	BPS325	BPS425	BPS525	BPS625
1½"	BPS325	BPS325	BPS425	BPS525	BPS625
2"	BPS325	BPS425	BPS425	BPS525	BPS625
2½"	BPS425	BPS425	BPS525	BPS625	BPS825
3"	BPS425	BPS525	BPS525	BPS625	BPS825
3½"	BPS525	BPS525	BPS625	BPS825	BPS825
4"	BPS525	BPS625	BPS625	BPS825	BPS825

Sch. 40/80 Pipe	Insulation Thickness				
	½"	¾"	1"	1½"	2"
¼"	BPS225	BPS225	BPS325	BPS425	BPS525
⅜"	BPS225	BPS225	BPS325	BPS425	BPS525
½"	BPS225	BPS325	BPS325	BPS425	BPS525
¾"	BPS225	BPS325	BPS325	BPS425	BPS525
1"	BPS325	BPS325	BPS425	BPS525	BPS625
1¼"	BPS325	BPS325	BPS425	BPS525	BPS625
1½"	BPS325	BPS425	BPS425	BPS525	BPS625
2"	BPS425	BPS425	BPS425	BPS525	BPS625
2½"	BPS425	BPS525	BPS525	BPS625	BPS825
3"	BPS525	BPS525	BPS625	BPS825	BPS825
3½"	BPS525	BPS625	BPS625	BPS825	BPS825
4"	BPS625	BPS625	BPS825	BPS825	BPS825

Reliable, Durable, Cost-effective Insulation protection.

Eaton offers three B-Line series Snap 'N Shield™ supports to help protect your pipe insulation with B-Line series.

- **Snap 'N Shield Universal**
Ideal for clevis hangers, strut supports and angle iron supports
- **Snap 'N Shield Clevis**
For support when using clevis hangers
- **Snap 'N Shield Strut**
For support when using 1½" x 1½" strut

For more information, visit:
www.cooperblineline.com/snap-n-shield

Snap 'N Shield Universal Support



Snap 'N Shield Clevis Support



Snap 'N Shield Strut Support



For more information, visit
www.cooperblineline.com/snap-n-shield
or www.eaton.com/b-lineseries

U.S. Customer Service Center is staffed Monday through Friday from 7 a.m. to 5 p.m. Central Standard Time.

Eaton
509 West Monroe Street
Highland, IL 62249
United States
800-851-7415
www.cooperblineline.com/contactus

Eaton
1000 Eaton Boulevard
Cleveland, OH 44122
United States
Eaton.com

B-Line Division
509 West Monroe Street
Highland, IL 62249

Eaton.com
© 2016 Eaton
All Rights Reserved
Printed in USA
Publication No. BR310002EN
March 2016 SNS-16

Eaton is a registered trademark.
All other trademarks are property
of their respective owners.

Follow us on social media to get the
latest product and support information.

